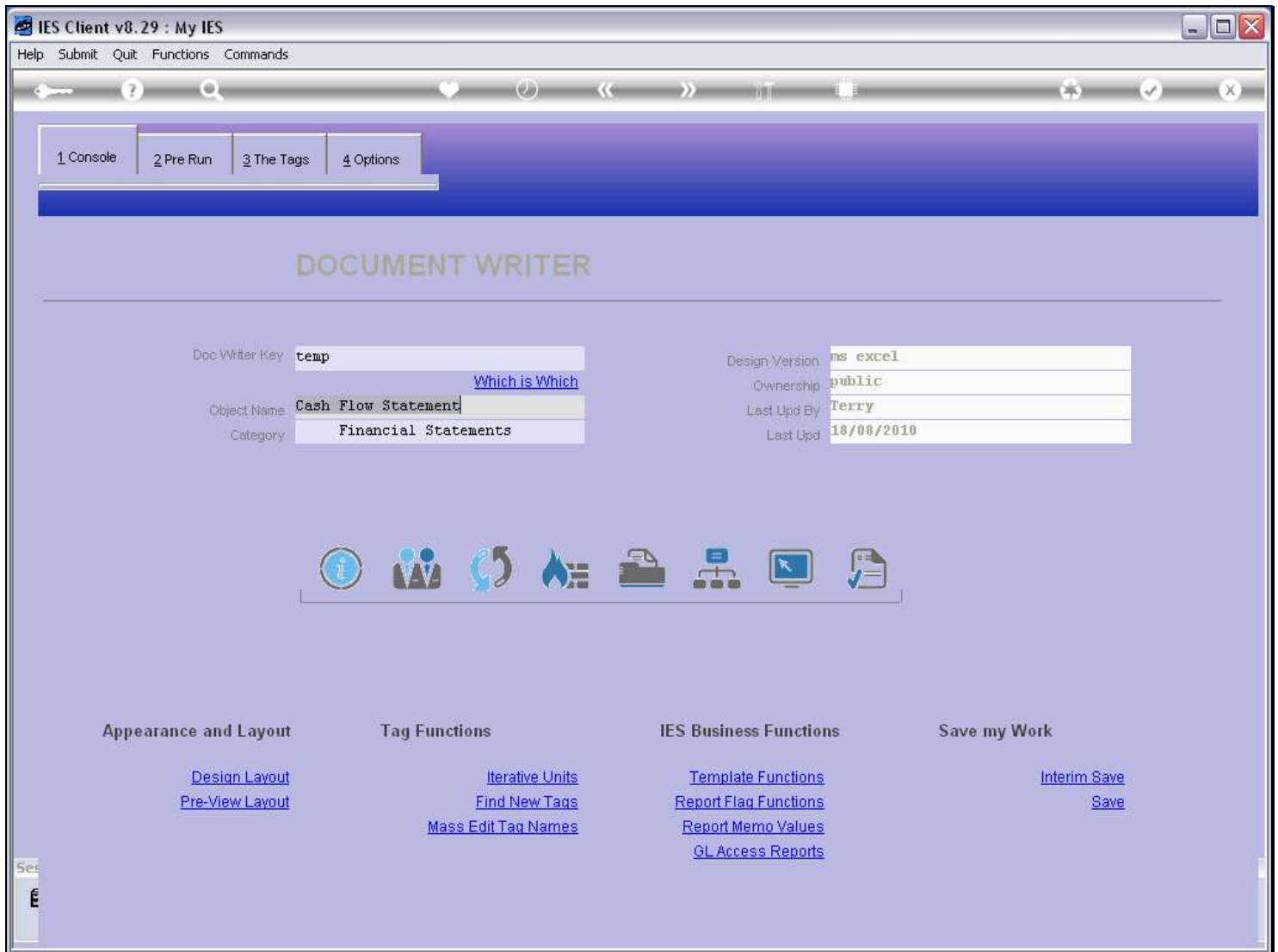
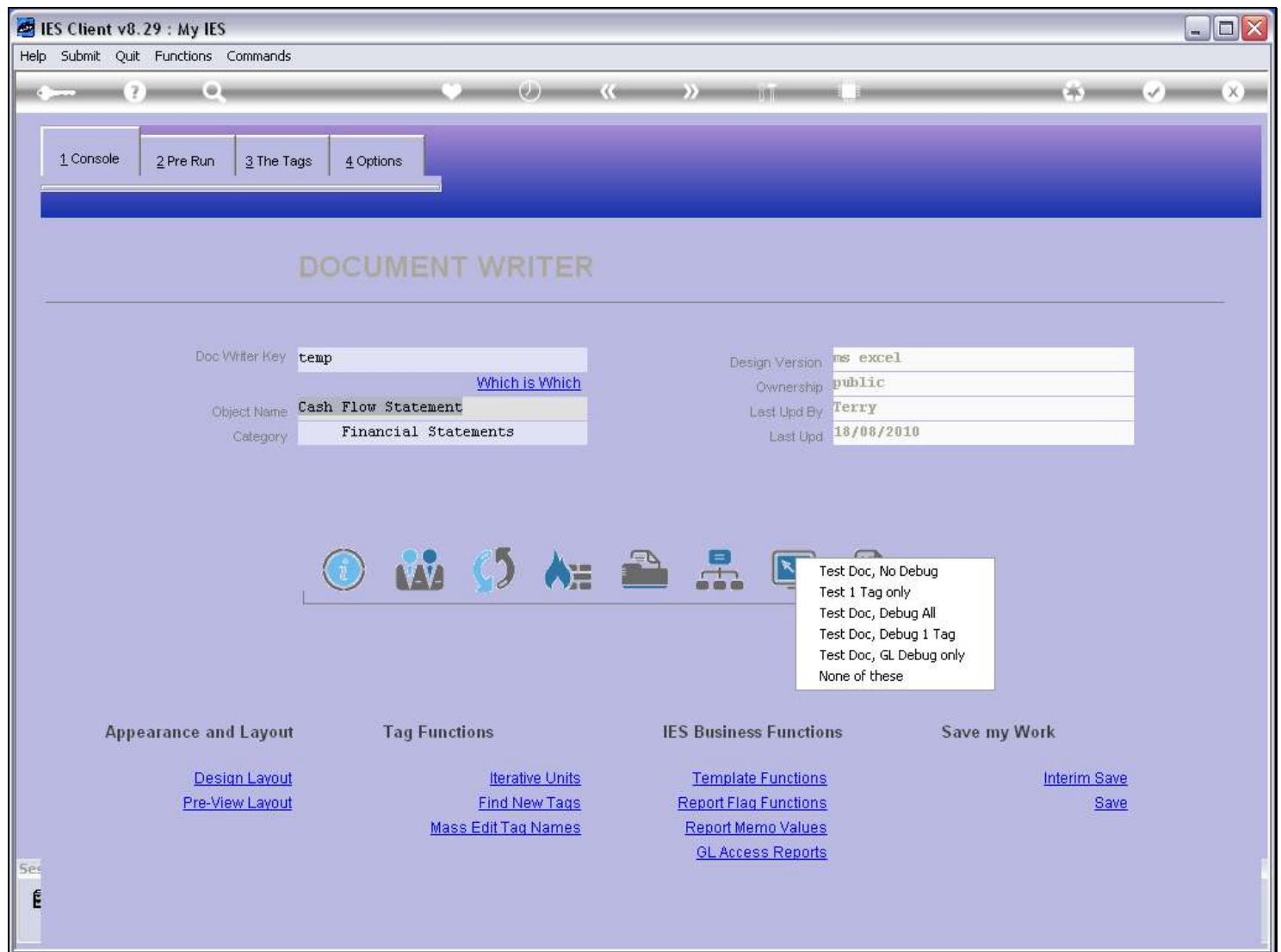


Slide 1 - Slide 1



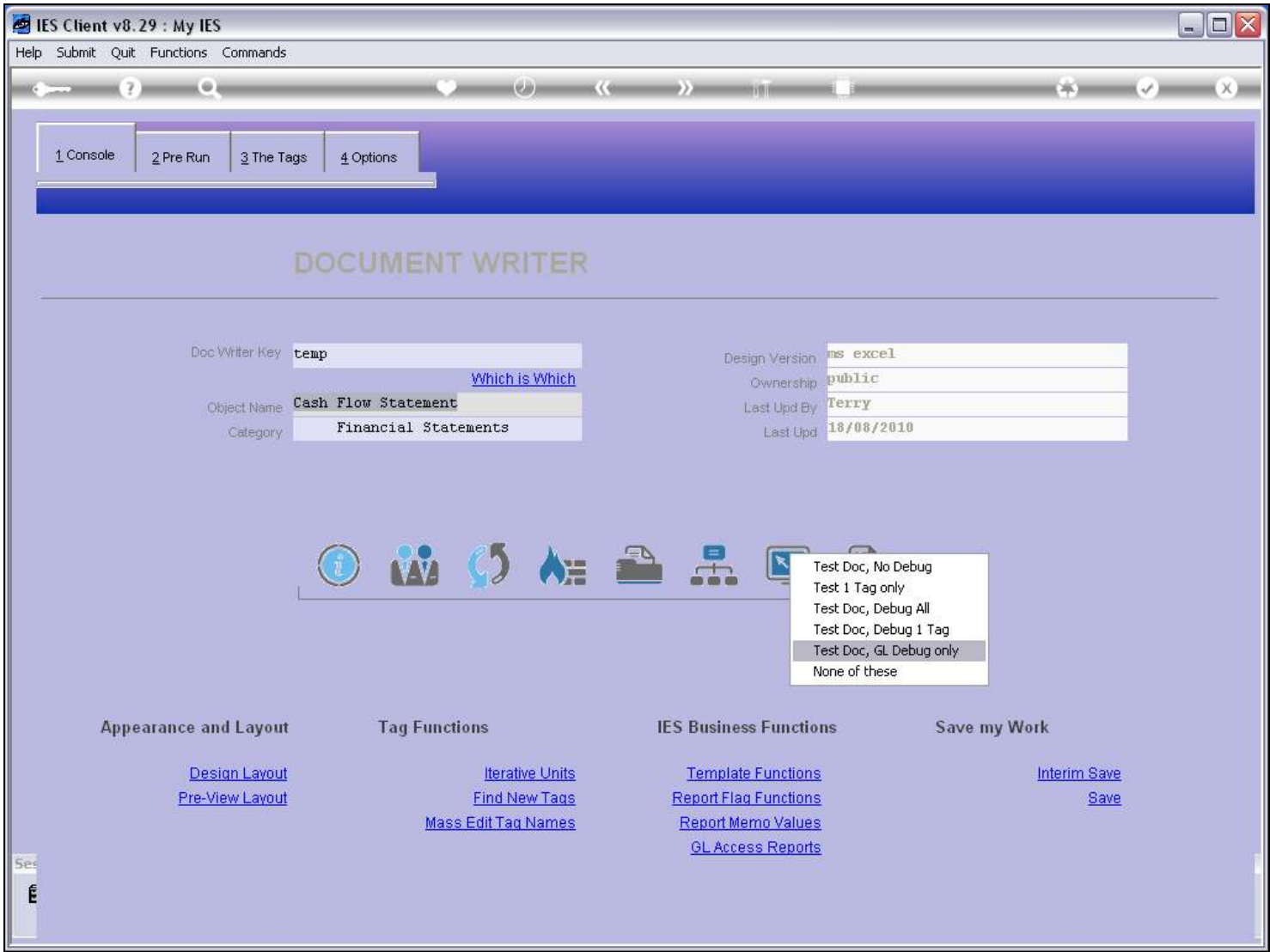
Slide notes

One of the options when testing our Report is also one of the possible purposes for testing, and that is to track the GL Access.

Slide 2 - Slide 2**Slide notes**

For this, we turn on the 'GL Debugging'.

Slide 3 - Slide 3



Slide notes

Slide 4 - Slide 4

IES Client v8.29 : My IES

Help Submit Quit Functions Commands

REPORT RUNTIME VALUES

This report can interpret the Financial Year according to your Selection.

Please choose the Periods to Apply -

Year Start Period 104

Current Month Jul 2010 (p 114)

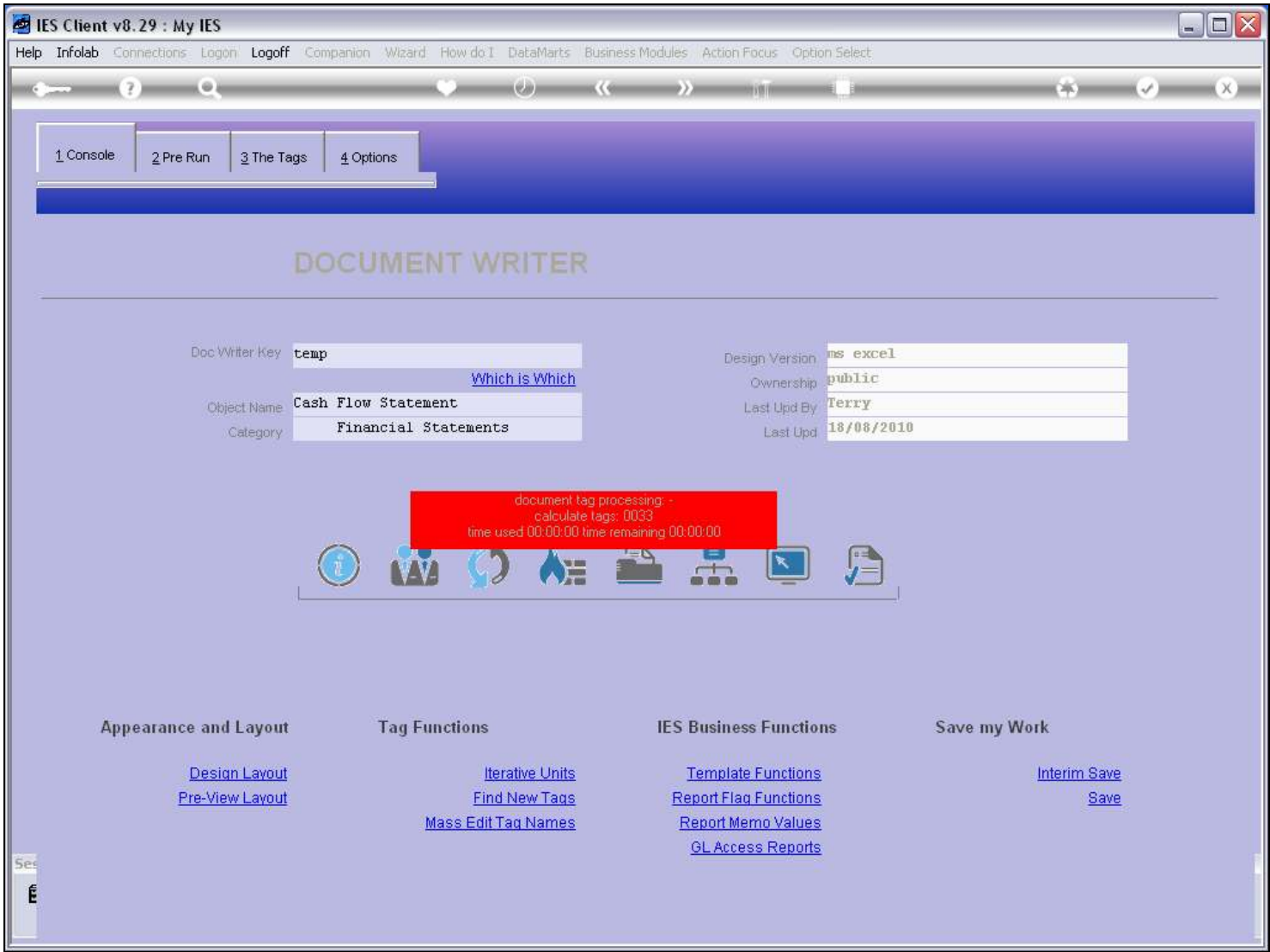
End Of Year Aug 2010 (p 115)

[Next](#)

Slide notes

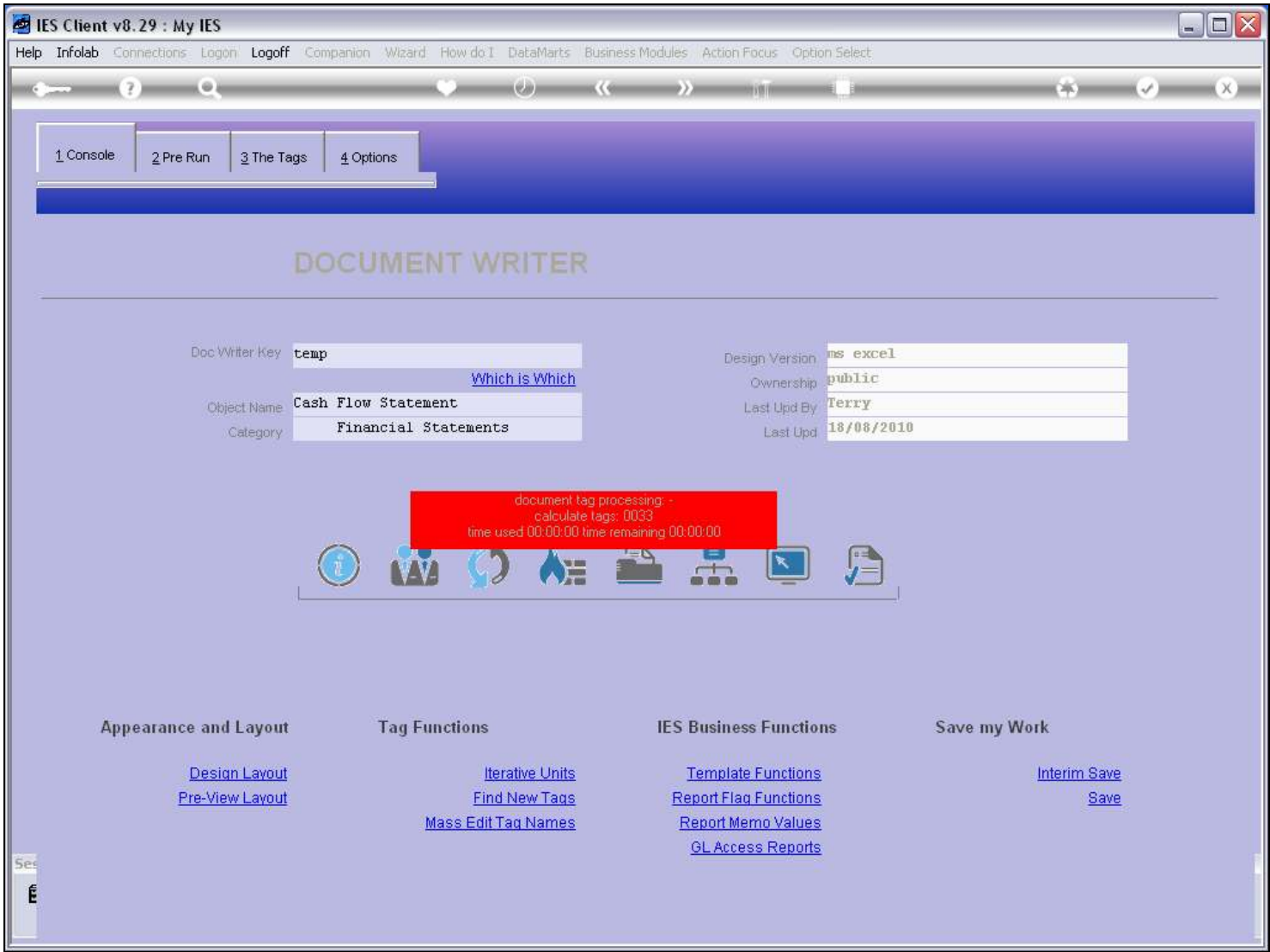
And Pre Run processes or Data Selectors may pop up.

Slide 5 - Slide 5



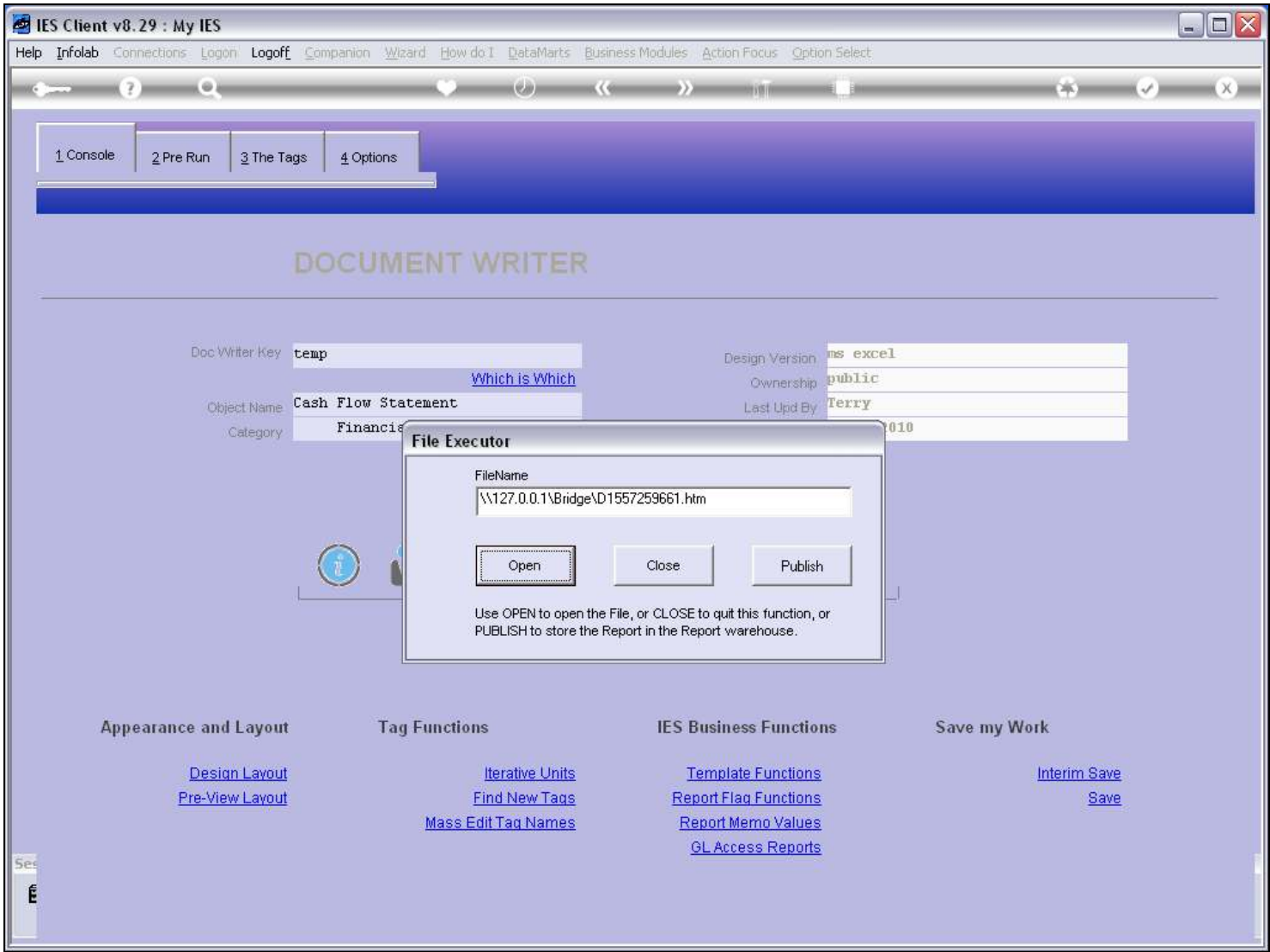
Slide notes

Slide 6 - Slide 6



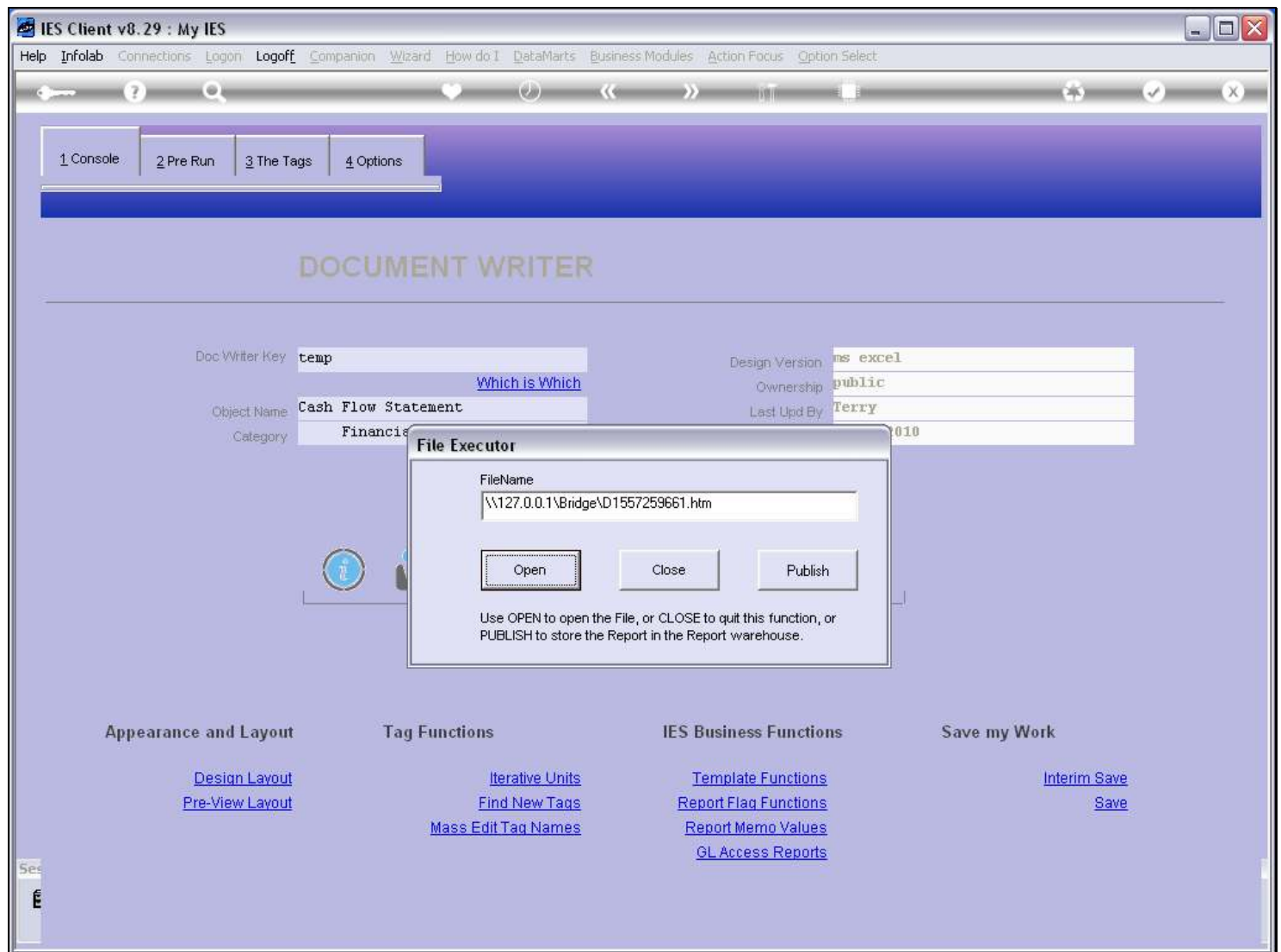
Slide notes

Slide 7 - Slide 7



Slide notes

Slide 8 - Slide 8



Slide notes

Slide 9 - Slide 9

W127.0.0.1\Bridge\ID1557259661.htm - Windows Internet Explorer

W127.0.0.1\Bridge\ID1557259661.htm

File Edit View Favorites Tools Help

Google Search

W127.0.0.1\Bridge\ID1557259661.htm

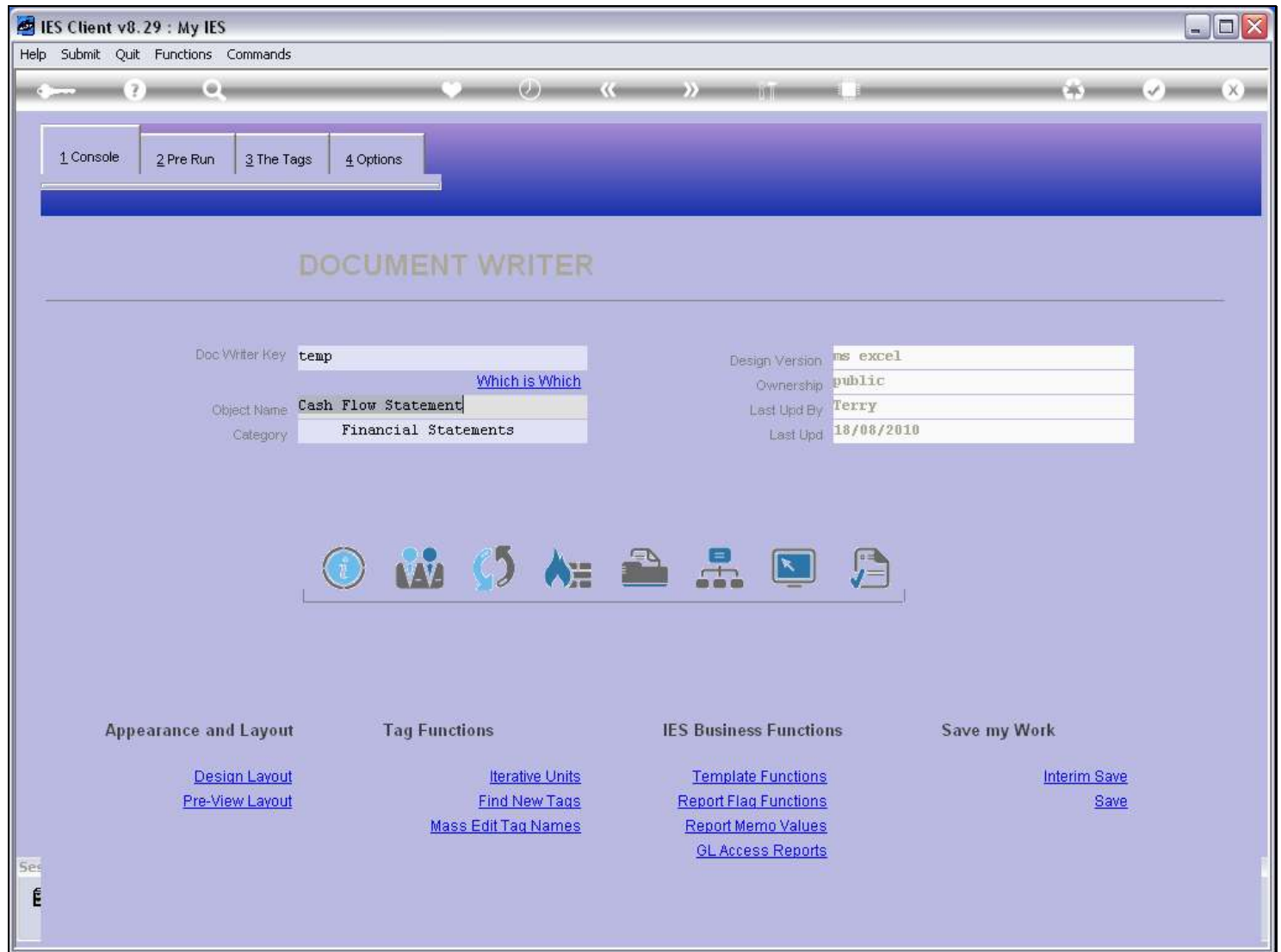
Cash Flow Statement

	Period ending	January	February	March	April	May	June	July	August	Sept
Beginning Cash At Bank		0	(193)	0	193	0	200,000	0	0	0
Net income										
Operating activities, cash flows provided by or used in:										
Depreciation and amortization										
Adjustments to net income										
Decrease (increase) in accounts receivable										
Increase (decrease) in liabilities (A/P, taxes payable)										
Decrease (increase) in inventories	0	0	0	0	0	0	0	0	0	0
Increase (decrease) in other operating activities										
Net cash flow from operating activities	0	0	0	0	0	0	0	0	0	0
Investing activities, cash flows provided by or used in:										
Capital expenditures	0	0	0	0	0	200,000	0	0	0	0
Investments										
Other cash flows from investing activities	0	(193)	0	193	0	0	0	0	0	0
Net cash flows from investing activities	0	(193)	0	193	0	200,000	0	0	0	0
Financing activities, cash flows provided by or used in:										
Dividends paid	0	0	0	0	0	0	0	0	0	0
Sale (repurchase) of stock										
Increase (decrease) in debt	0	0	0	0	0	0	0	0	0	0
Other cash flows from financing activities										
Net cash flows from financing activities	0	0	0	0	0	0	0	0	0	0
Effect of exchange rate changes										
Net increase (decrease) in cash and cash equivalents	0	(193)	0	193	0	200,000	0	0	0	0
Ending Cash At Bank		(193)	0	193	0	200,000	0	0	0	0

Slide notes

Then we will get a Report Result as usual, but the real purpose is to find out which GL Accounts were accessed or not during the processing of the Report.

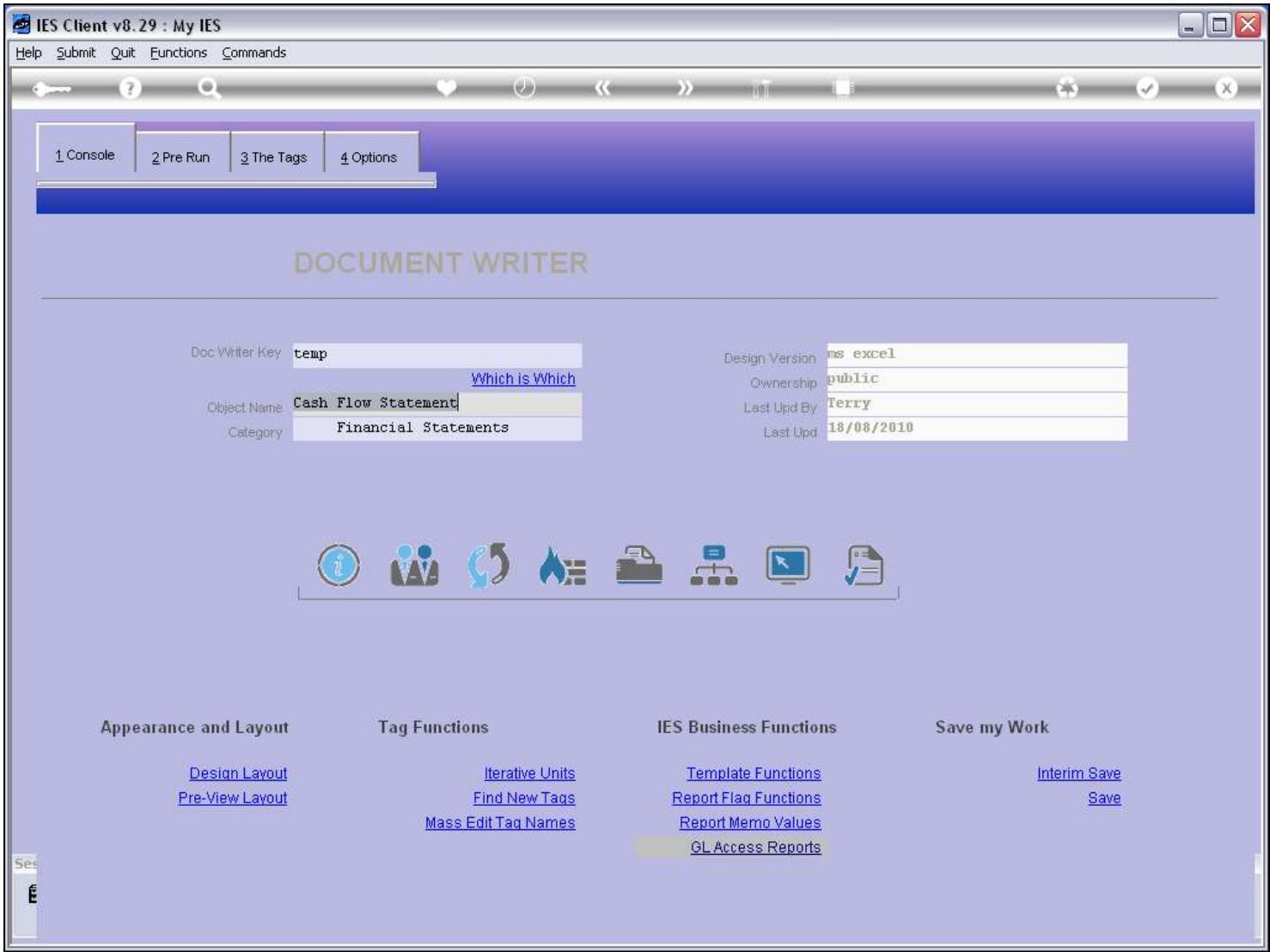
Slide 10 - Slide 10



Slide notes

So after getting the Report Result, we will want to use the GL Access Reports to see the GL Tag Access Results. For more explanation about the GL Access Reports, please also see the tutorial with that title.

Slide 11 - Slide 11



Slide notes