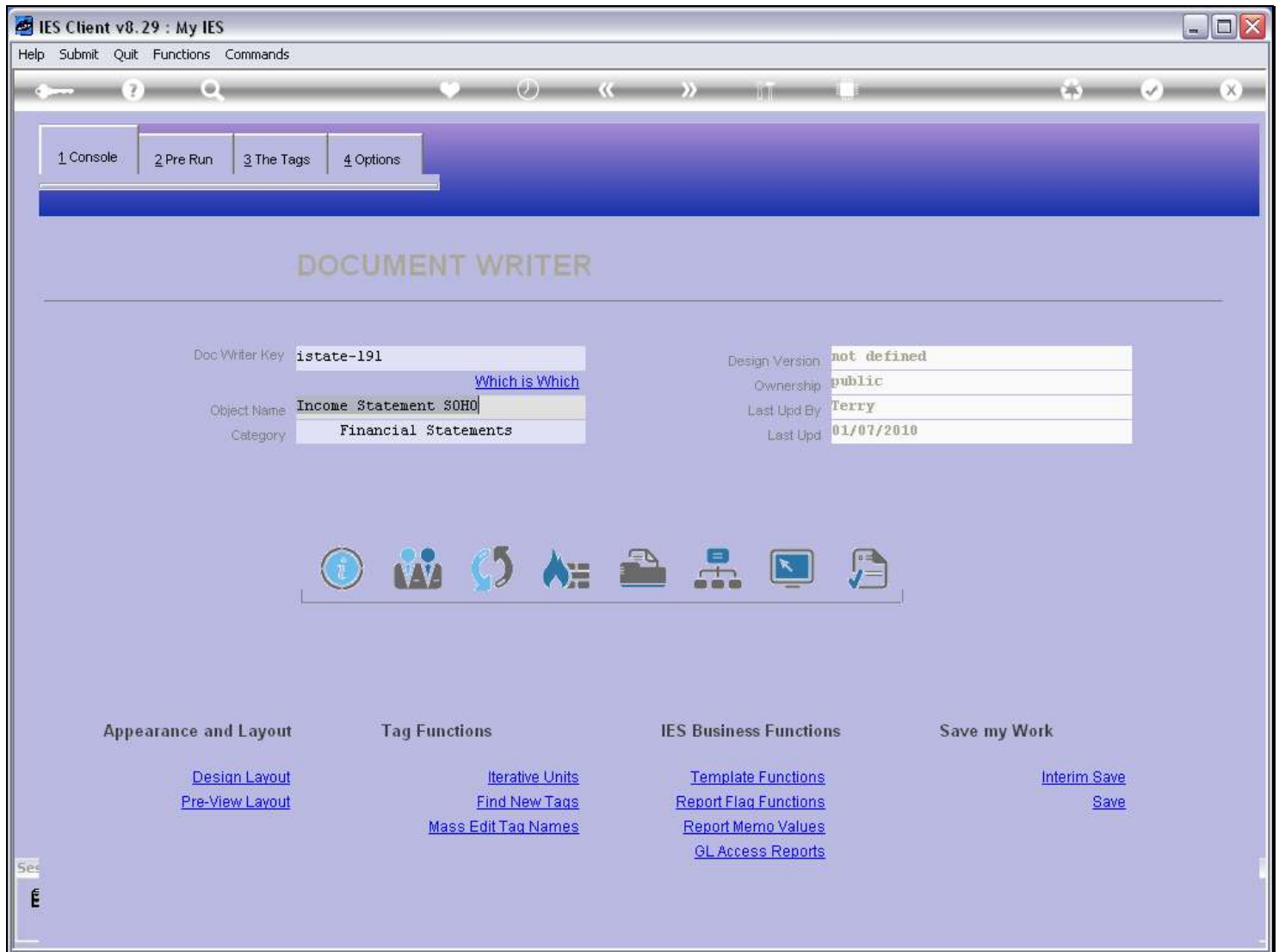


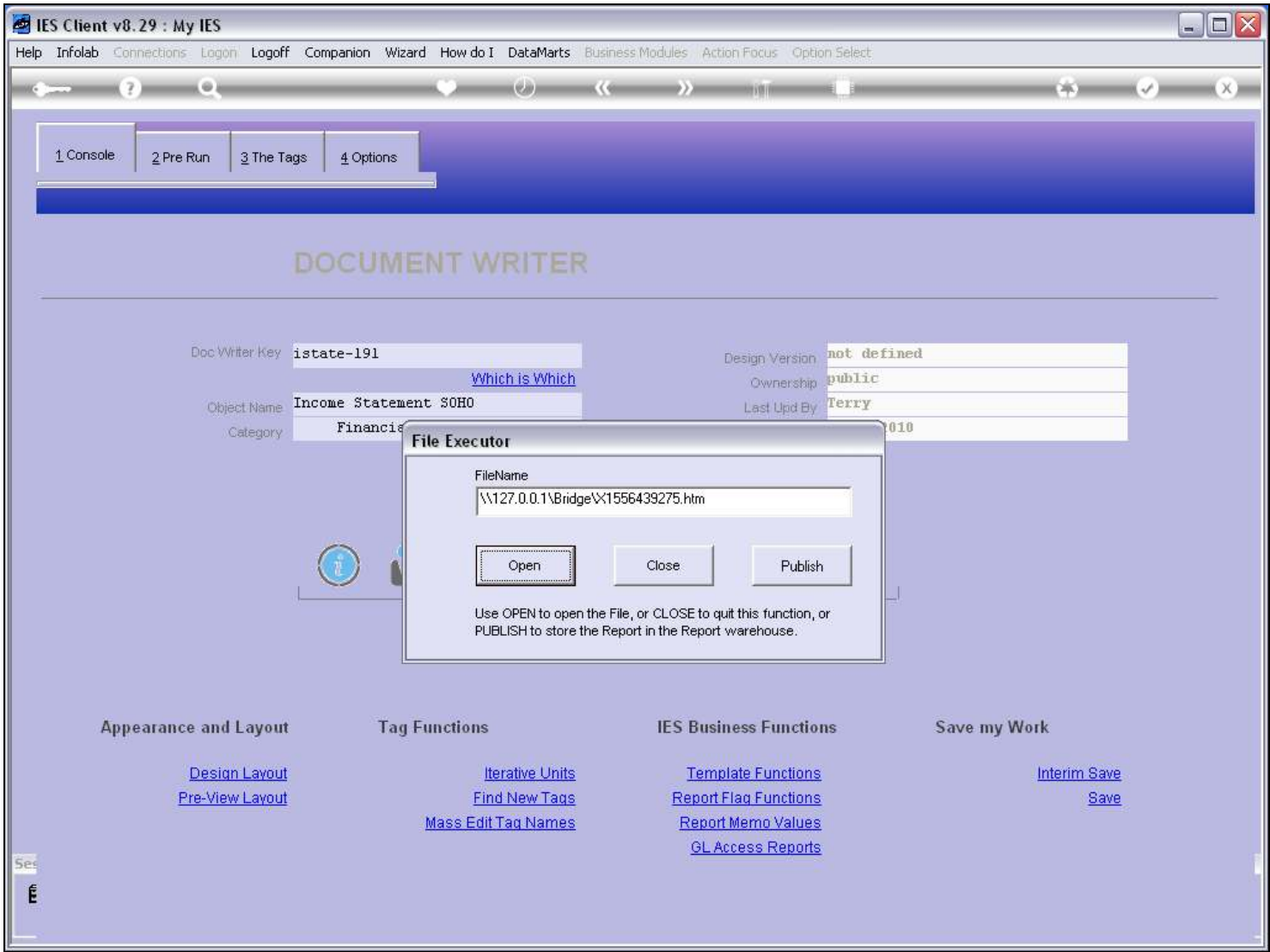
Slide 1 - Slide 1



Slide notes

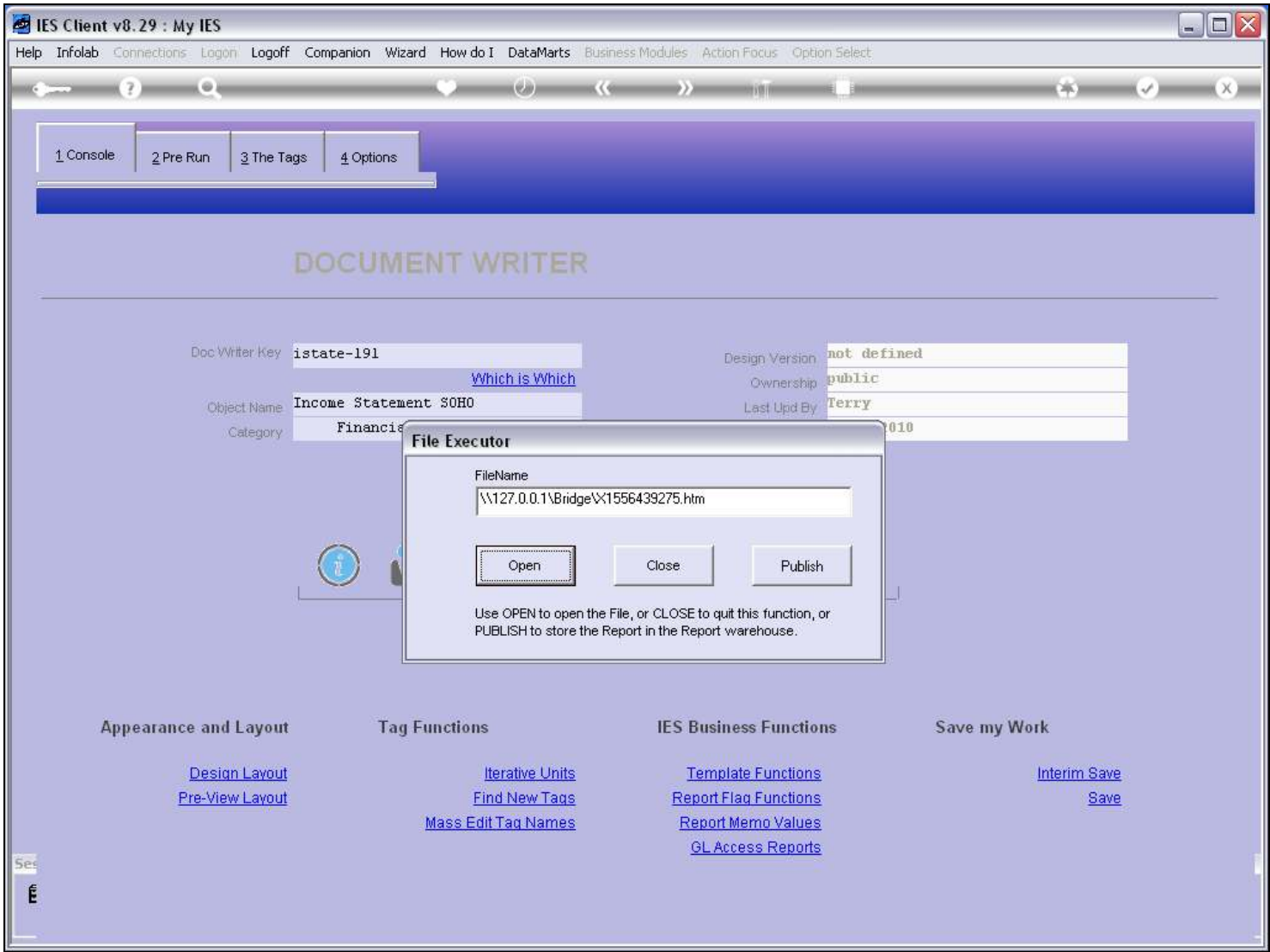
At DocWriter, we have an option to print the documentation for the Report.

Slide 2 - Slide 2



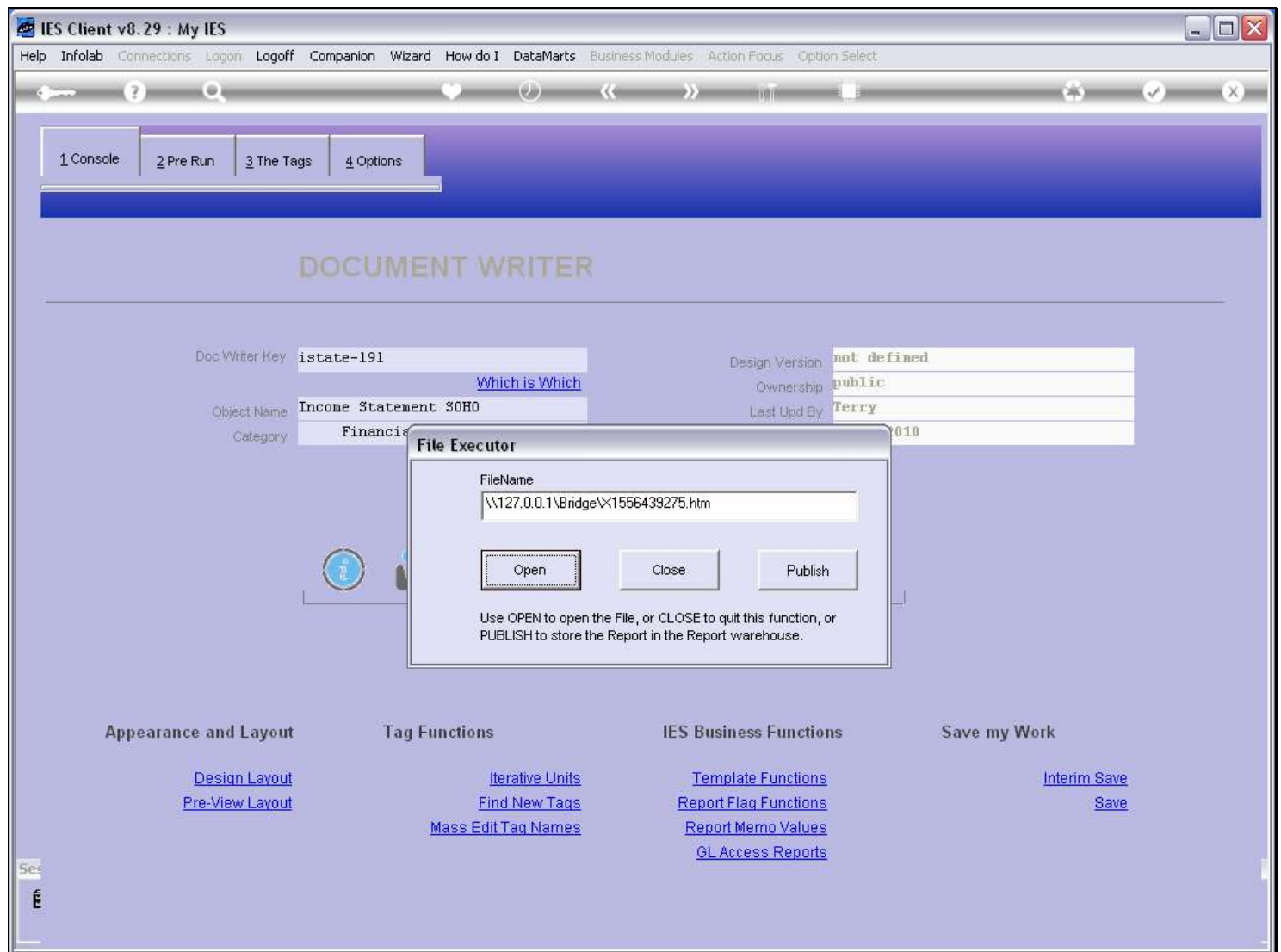
Slide notes

Slide 3 - Slide 3



Slide notes

Slide 4 - Slide 4



Slide notes

Slide 5 - Slide 5

W\127.0.0.1\Bridge\X1556439275.htm - Windows Internet Explorer

W\127.0.0.1\Bridge\X1556439275.htm

File Edit View Favorites Tools Help

Google

Search

Share

Sidewiki

Check

Translate

AutoFill

Sign In

Favorites

Free Hotmail

Suggested Sites

Web Slice Gallery

W\127.0.0.1\Bridge\X1556439275.htm

Page

Safety

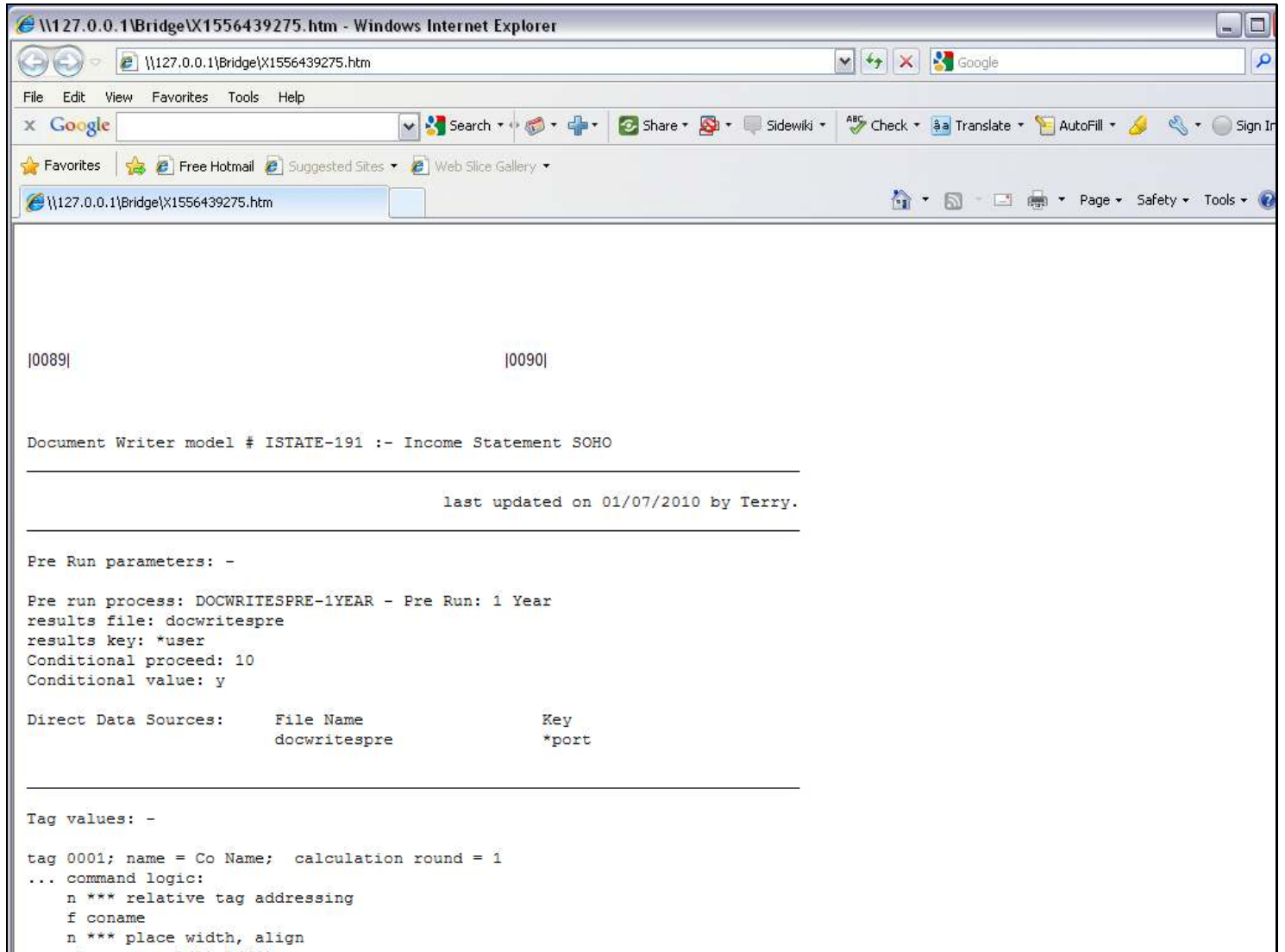
Tools

[0001] Profit and Loss (Income Statement) for [0002]						
	Actual Current	Budget	Actual YTD	Budget YTD	Annual Budget	
Revenue						
Stock Sales	[0014]	[0015]	[0016]	[0017]	[0018]	
Other	[0019]	[0020]	[0021]	[0022]	[0023]	
Total Revenue	[0024]	[0025]	[0026]	[0027]	[0028]	
Costs						
Rent and Utilities	[0029]	[0030]	[0031]	[0032]	[0033]	
Bad Debts	[0034]	[0035]	[0036]	[0037]	[0038]	
Staff Costs	[0039]	[0040]	[0041]	[0042]	[0043]	
Office Costs	[0044]	[0045]	[0046]	[0047]	[0048]	
Audit Fees	[0049]	[0050]	[0051]	[0052]	[0053]	
Computer Systems	[0054]	[0055]	[0056]	[0057]	[0058]	
Equipment Maintenance	[0059]	[0060]	[0061]	[0062]	[0063]	
Sundry Expenses	[0064]	[0065]	[0066]	[0067]	[0068]	
Total Cost of Sales	[0069]	[0070]	[0071]	[0072]	[0073]	
[0084]						
[0085]Gross Profit	[0074]	[0075]	[0076]	[0077]	[0078]	[0086]
[0087]Gross Loss	[0079]	[0080]	[0081]	[0082]	[0083]	[0088]
[0097] [0091] [0092] [0093] [0094] [0095] [0096] [0098]						

Slide notes

The Documentation print starts with the Document Layout View.

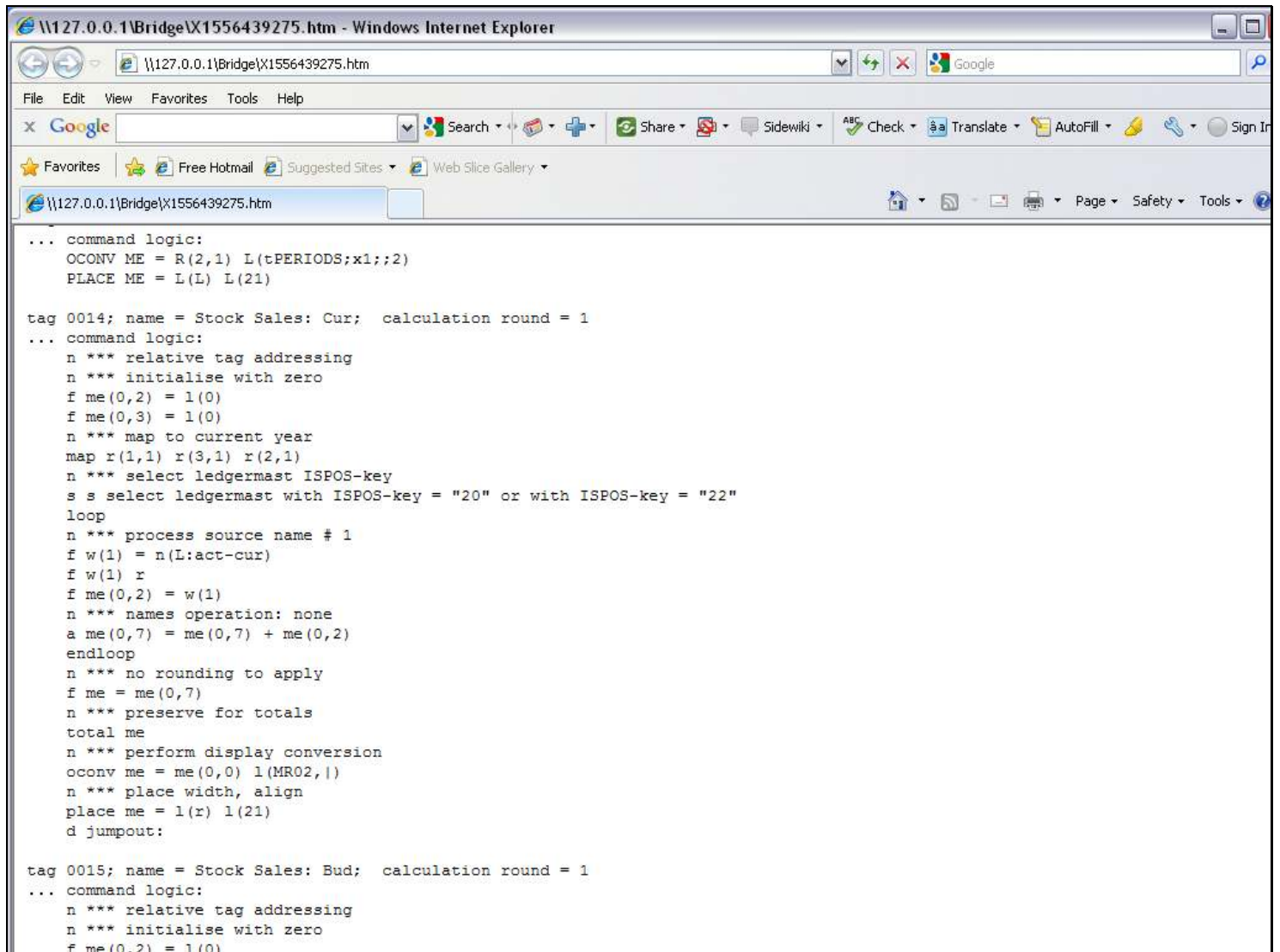
Slide 6 - Slide 6



Slide notes

This is followed by the primary parameters for the Document.

Slide 7 - Slide 7



```
... command logic:
OCONV ME = R(2,1) L(tPERIODS;x1;;2)
PLACE ME = L(L) L(21)

tag 0014; name = Stock Sales: Cur; calculation round = 1
... command logic:
n *** relative tag addressing
n *** initialise with zero
f me(0,2) = 1(0)
f me(0,3) = 1(0)
n *** map to current year
map r(1,1) r(3,1) r(2,1)
n *** select ledgermast ISPOS-key
s s select ledgermast with ISPOS-key = "20" or with ISPOS-key = "22"
loop
n *** process source name # 1
f w(1) = n(L:act-cur)
f w(1) r
f me(0,2) = w(1)
n *** names operation: none
a me(0,7) = me(0,7) + me(0,2)
endloop
n *** no rounding to apply
f me = me(0,7)
n *** preserve for totals
total me
n *** perform display conversion
oconv me = me(0,0) 1(MR02,|)
n *** place width, align
place me = 1(r) 1(21)
d jumpout:

tag 0015; name = Stock Sales: Bud; calculation round = 1
... command logic:
n *** relative tag addressing
n *** initialise with zero
f me(0,2) = 1(0)
```

Slide notes

And after this we have full details of all macros, i.e. Tag Logic that is used for the Tags.