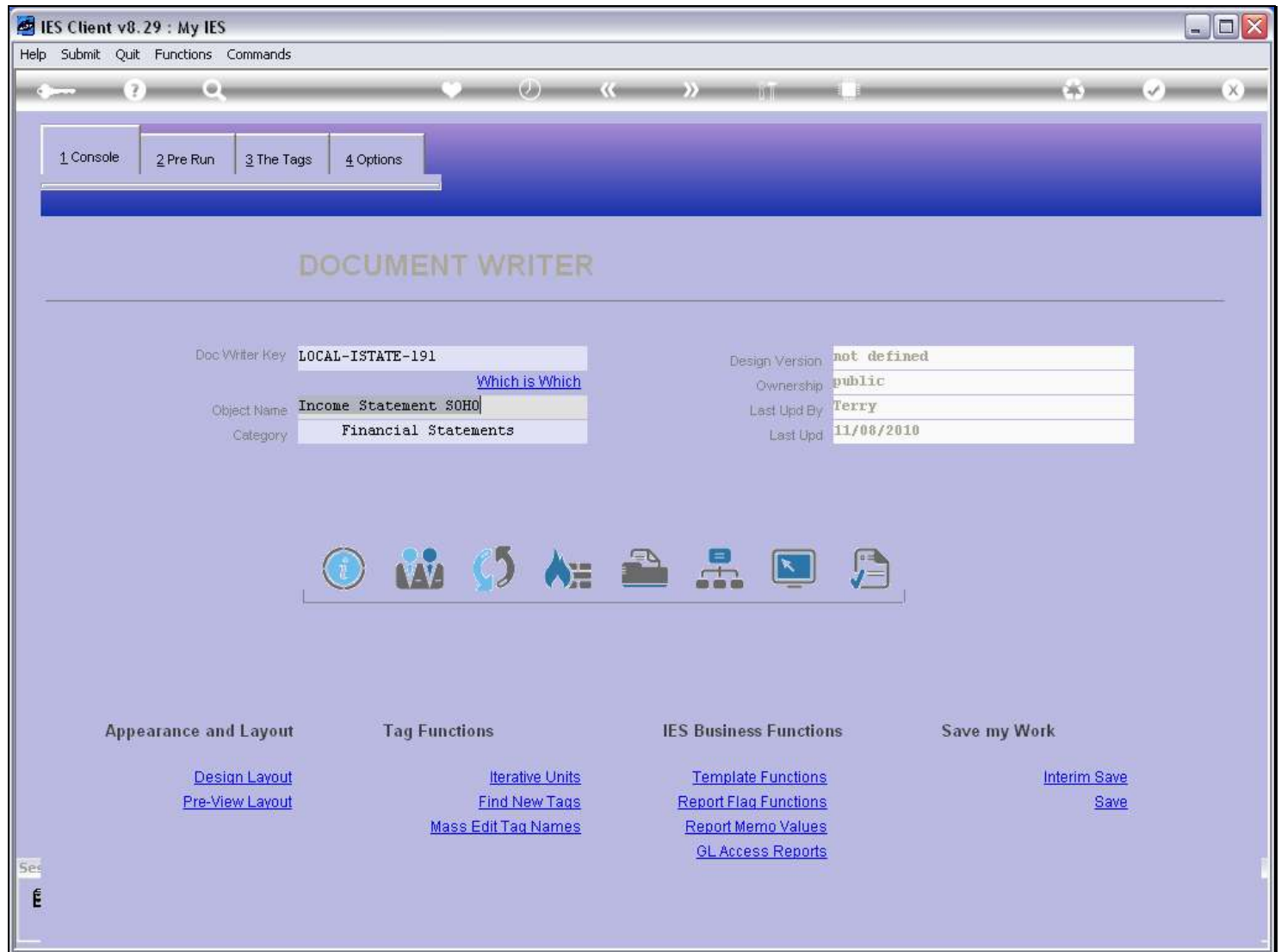


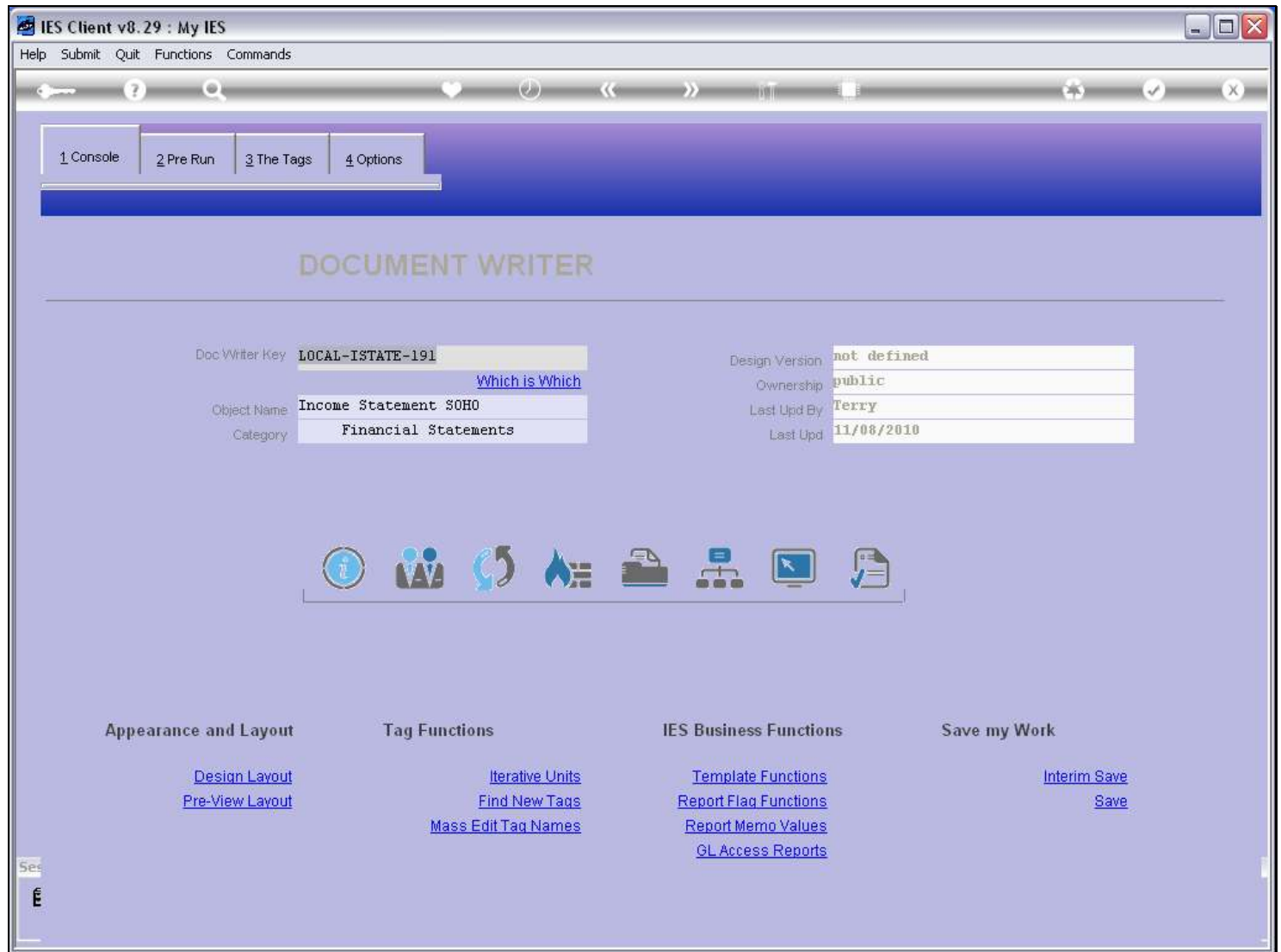
Slide 1 - Slide 1



Slide notes

Here we have a local version of a standard IES Report. We have made this local Report by using the 'Copy' function, and we have changed this Report to our liking. Now we would like the system to use this version whenever it has to perform the IES version, and the way to do that is to register a Swap. We should never change a standard IES Report, because the next upgrade will just overwrite any changes we have made. That's why we have the Swap function. We make a local copy, then change it to our liking, then register a Swap and then the system will always perform the Swap instead of the original IES Report.

Slide 2 - Slide 2



Slide notes

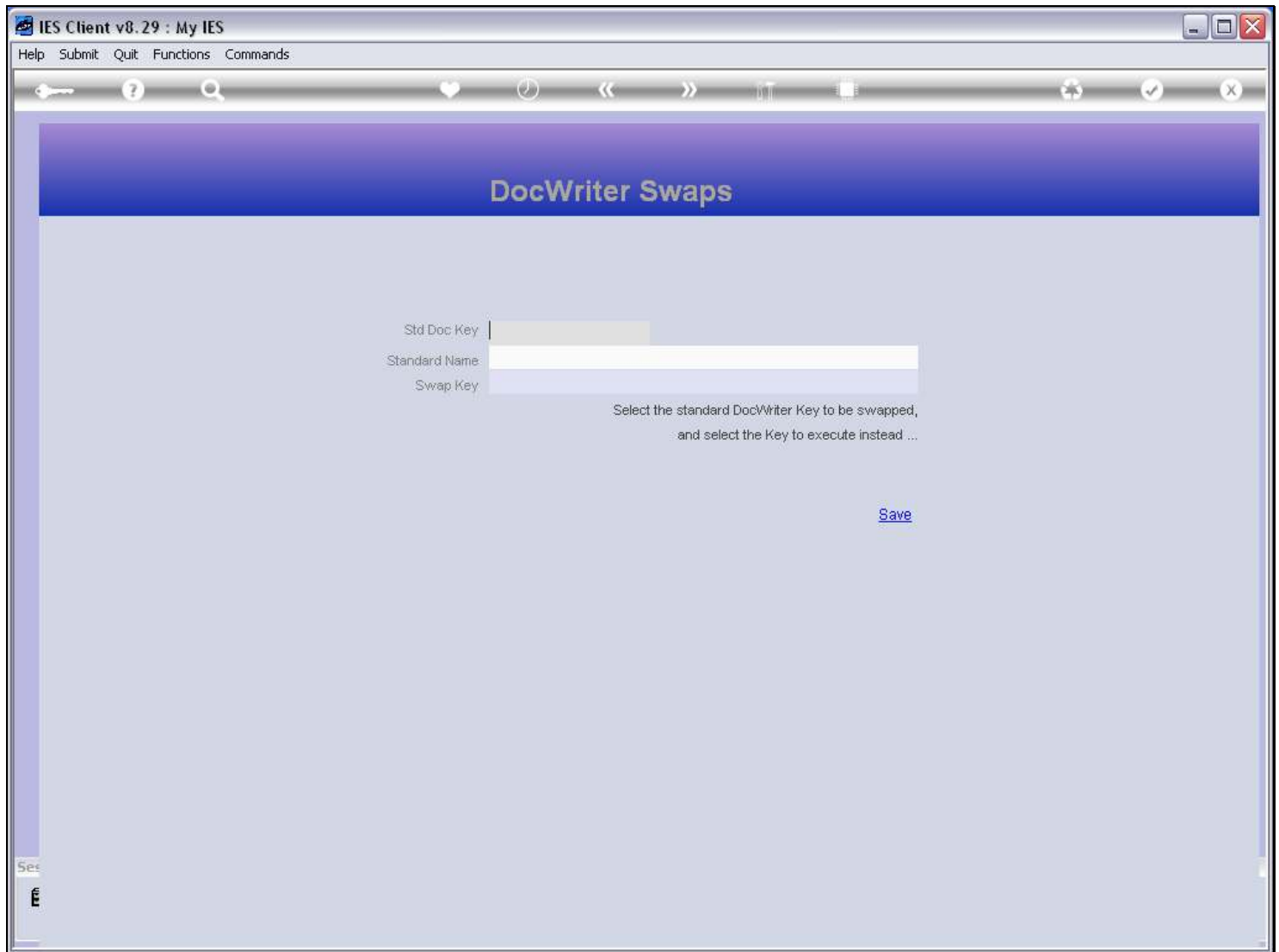
For this we choose the Publication function.

Slide 3 - Slide 3

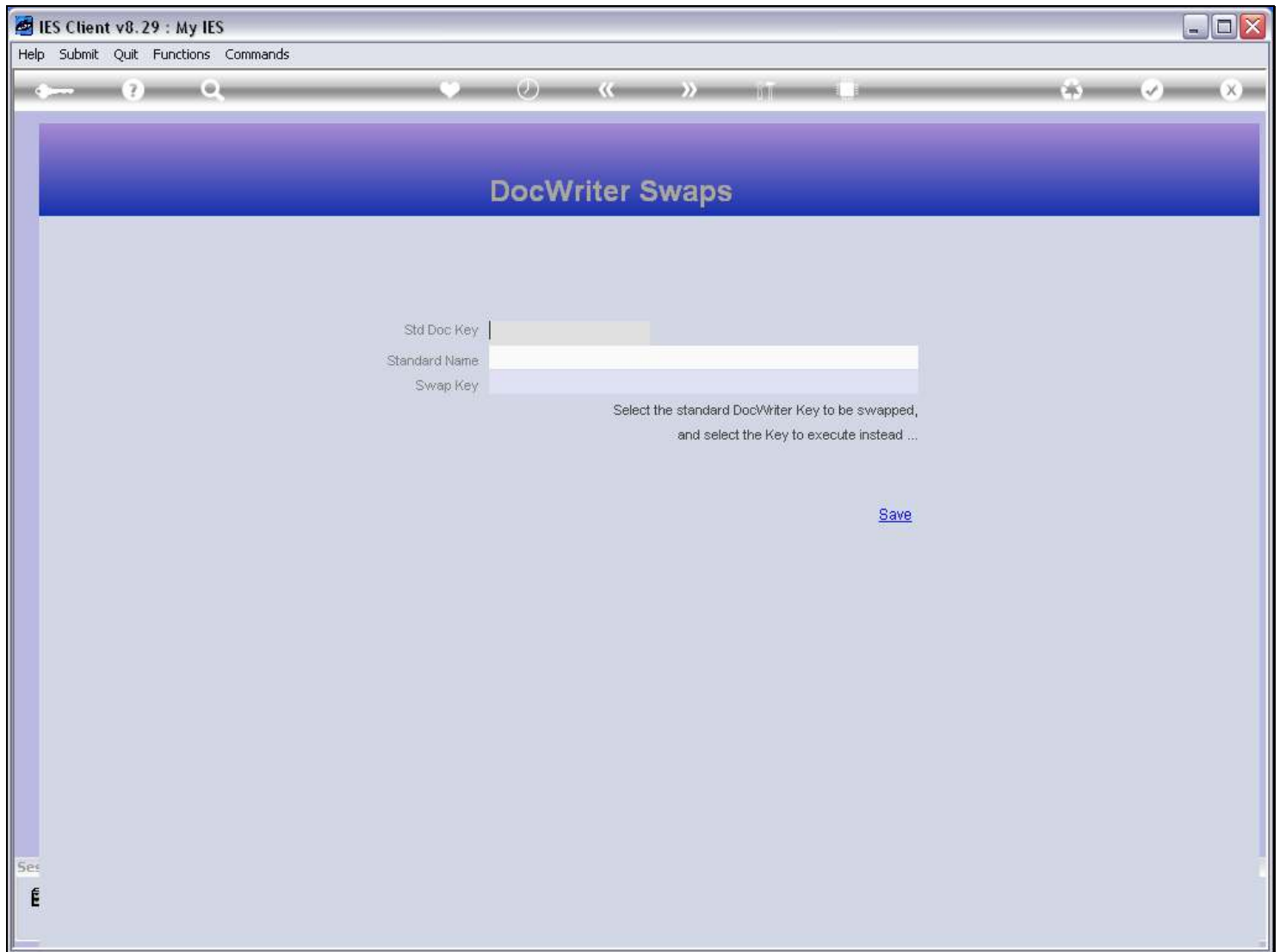


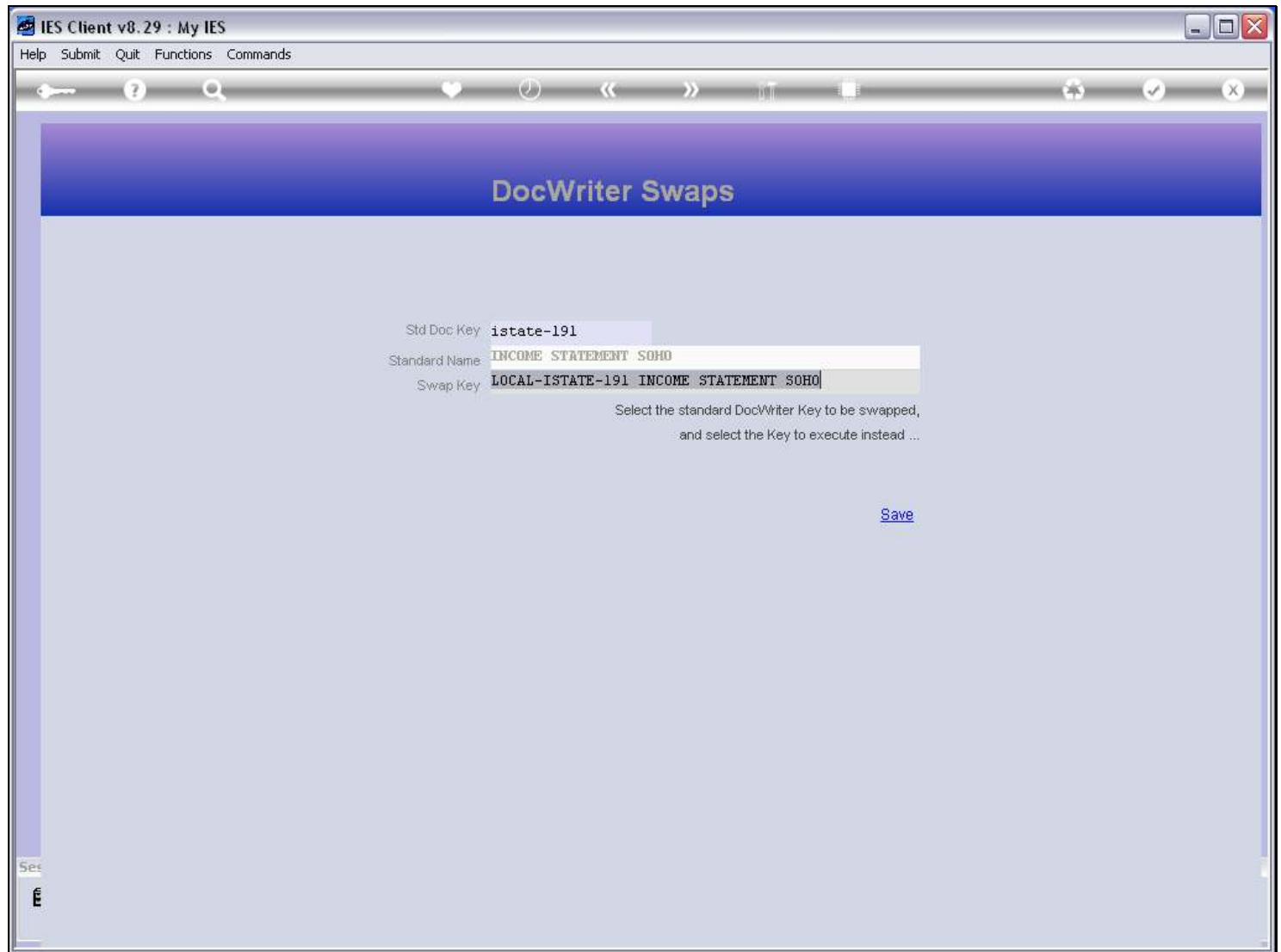
Slide notes

When we will use the Report as a Swap, then it does not require an entry in the Menu Process Library, because the original Report is already there. We just choose to register the Report as a Swap.

Slide 4 - Slide 4**Slide notes**

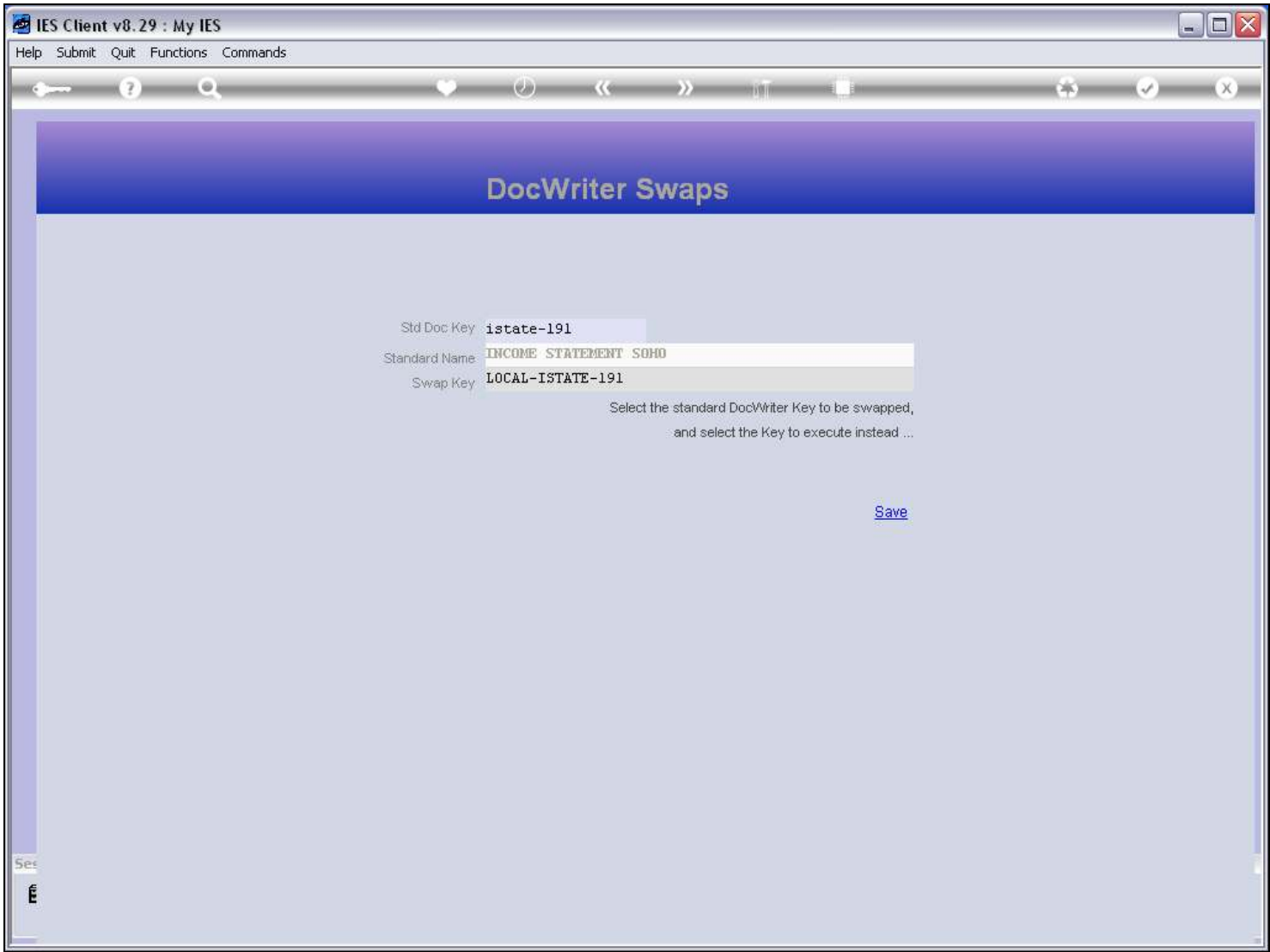
The standard Document Key is the IES Report that we wish to replace at 'perform time' with our Report.

Slide 5 - Slide 5**Slide notes**

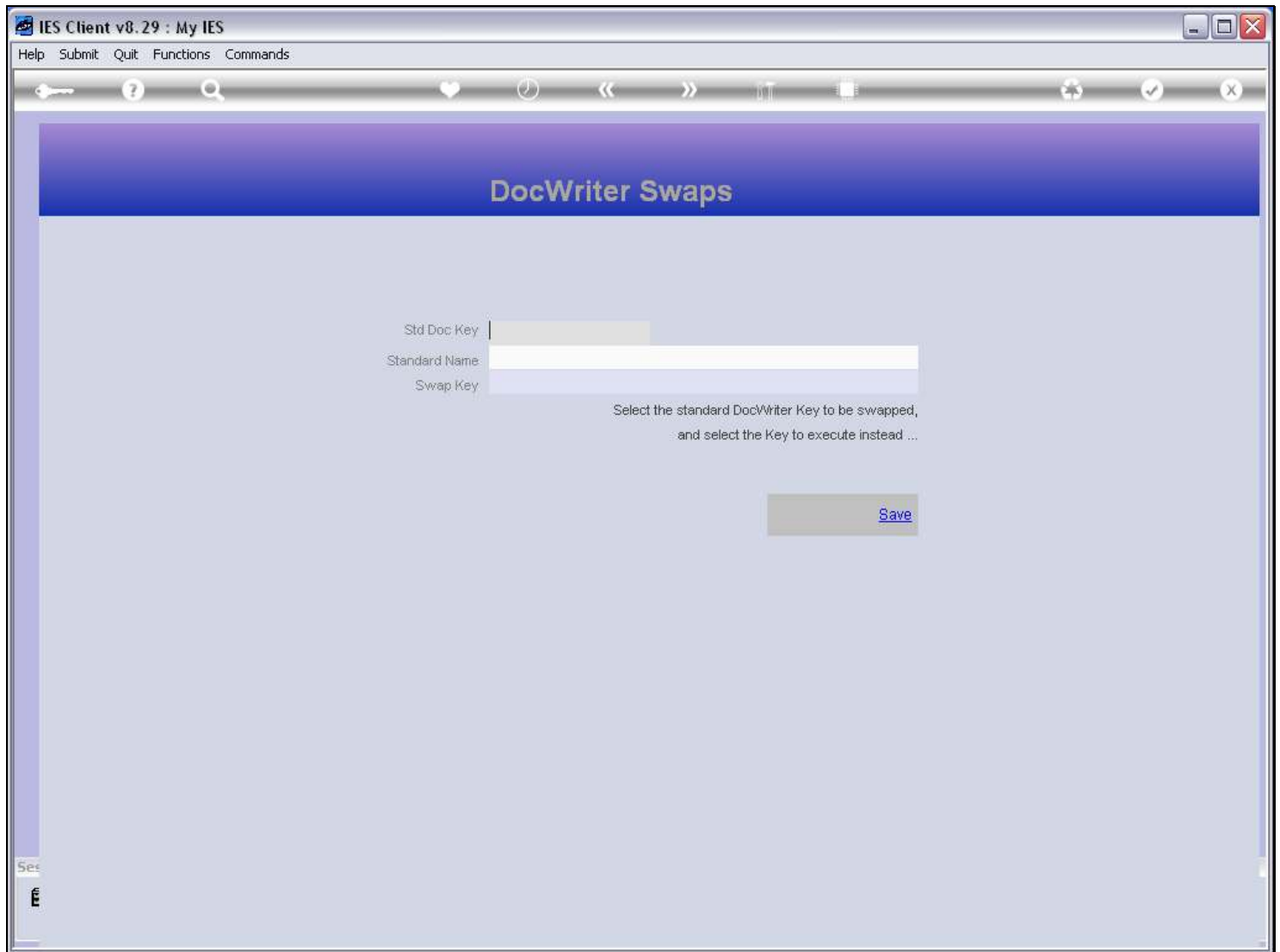
Slide 6 - Slide 6**Slide notes**

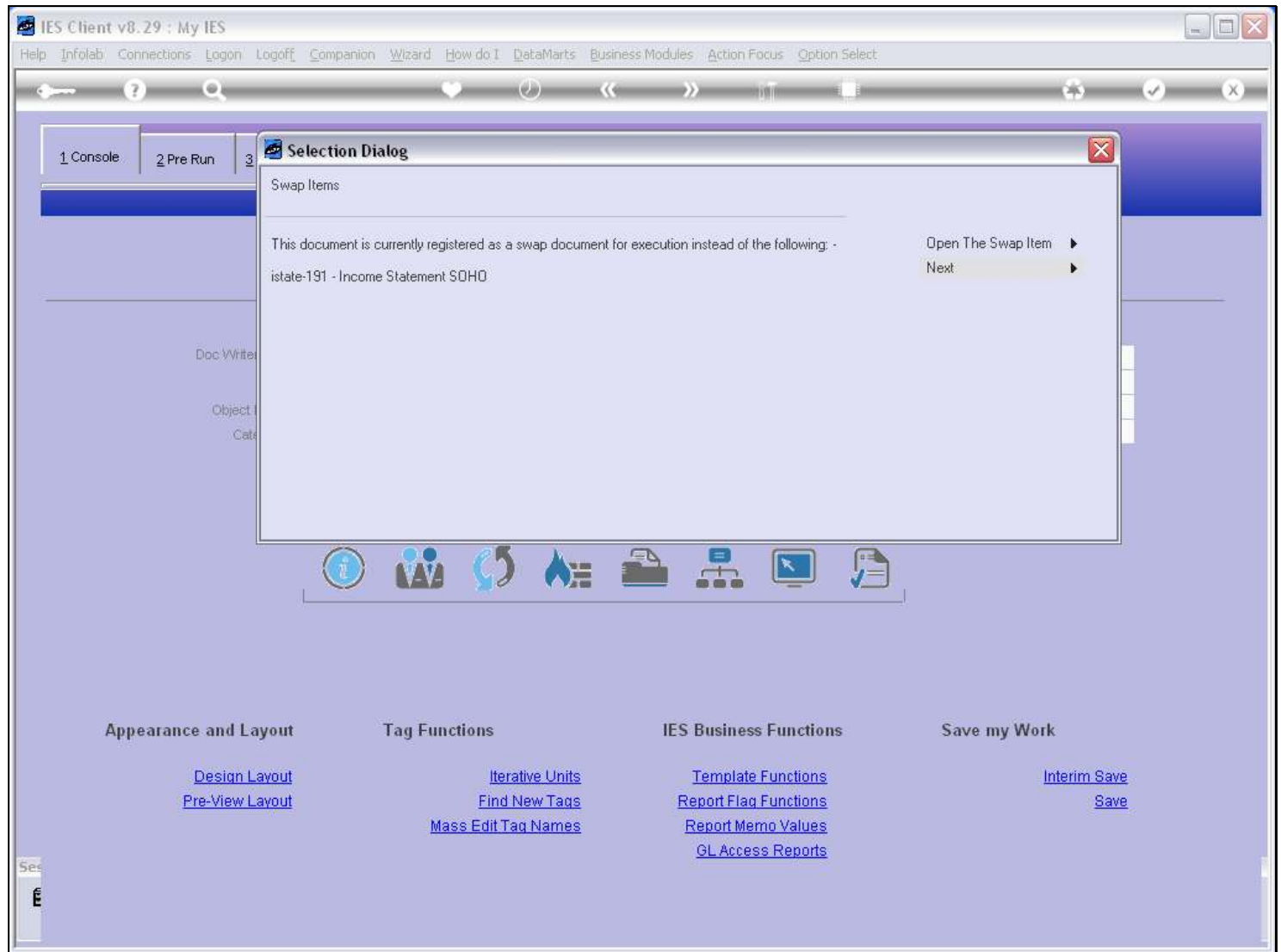
And then the system inserts the current Report as the Swap Key. Now, whenever the system wants to perform "istate-191", it will notice that there is a Swap registered, and then it performs "local-istate-191" instead.

Slide 7 - Slide 7

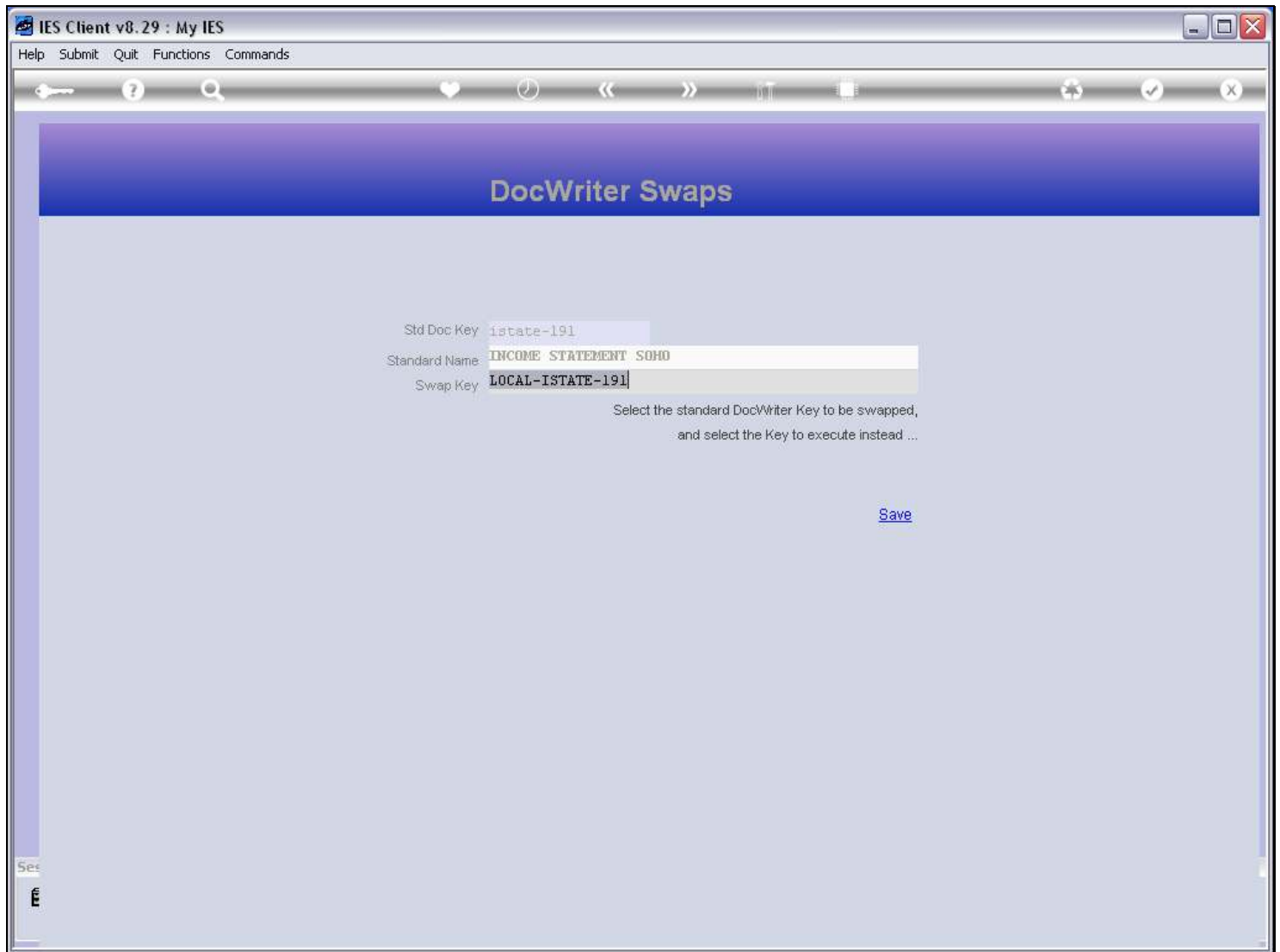


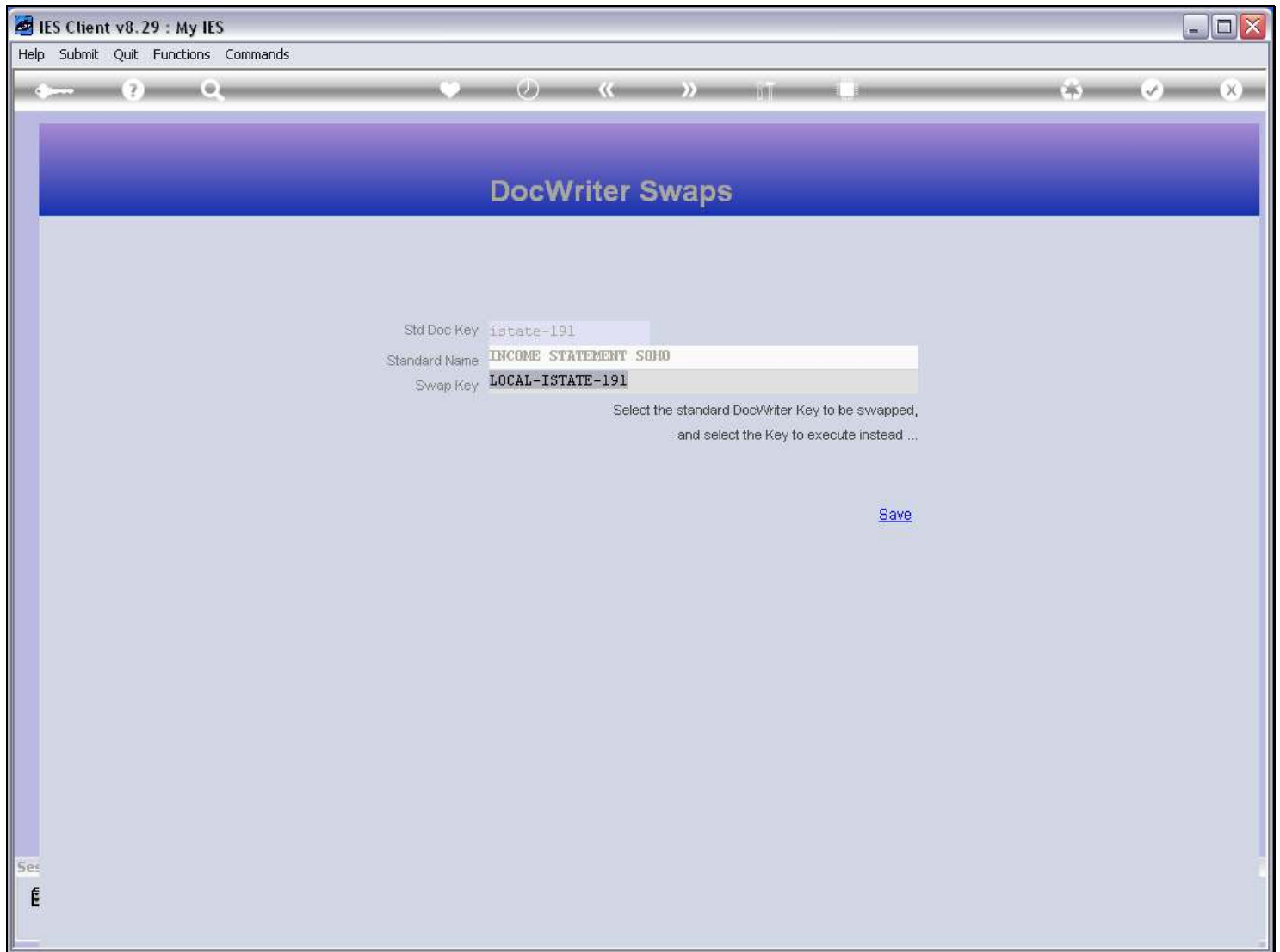
Slide notes

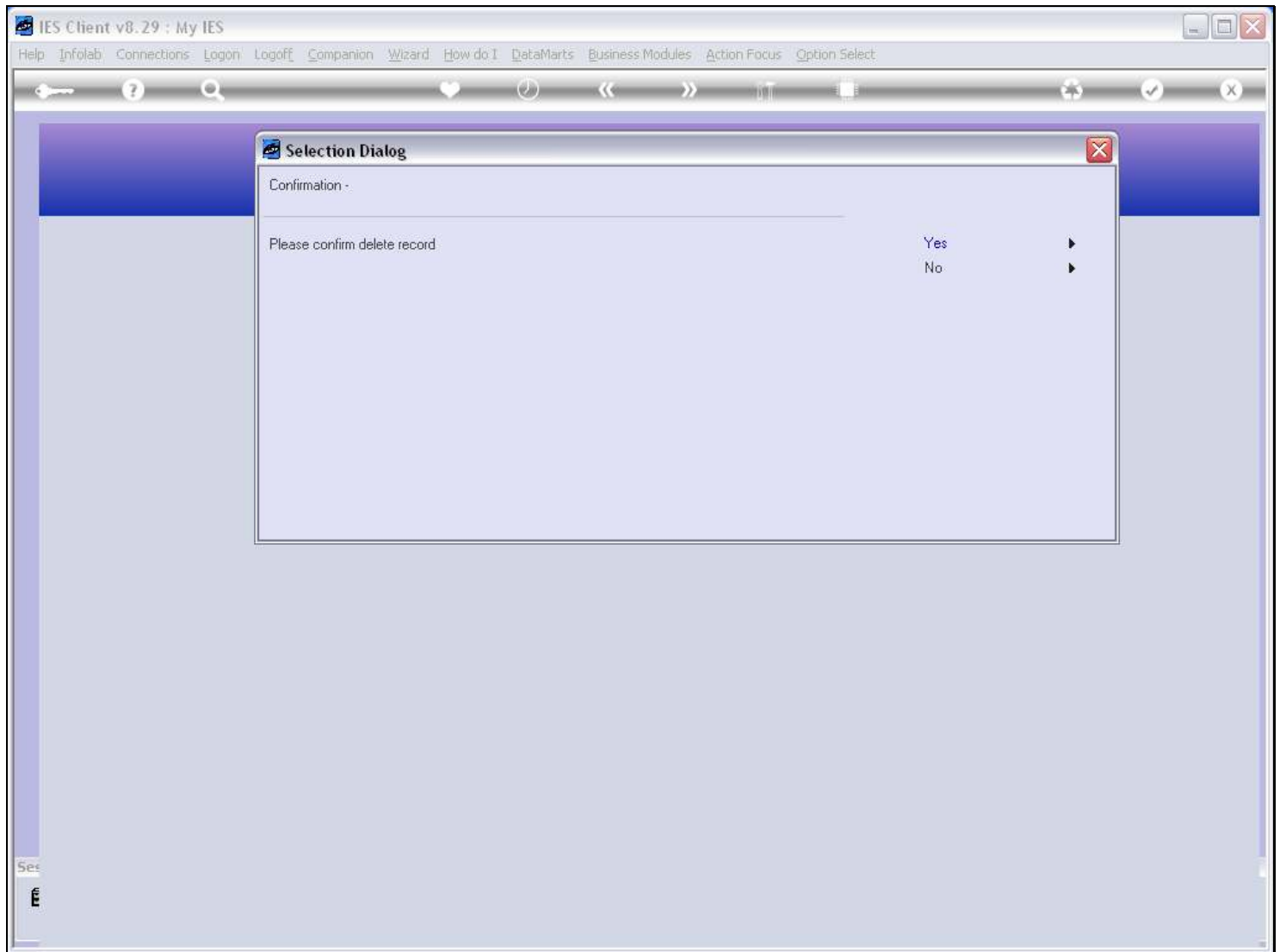
Slide 8 - Slide 8**Slide notes**

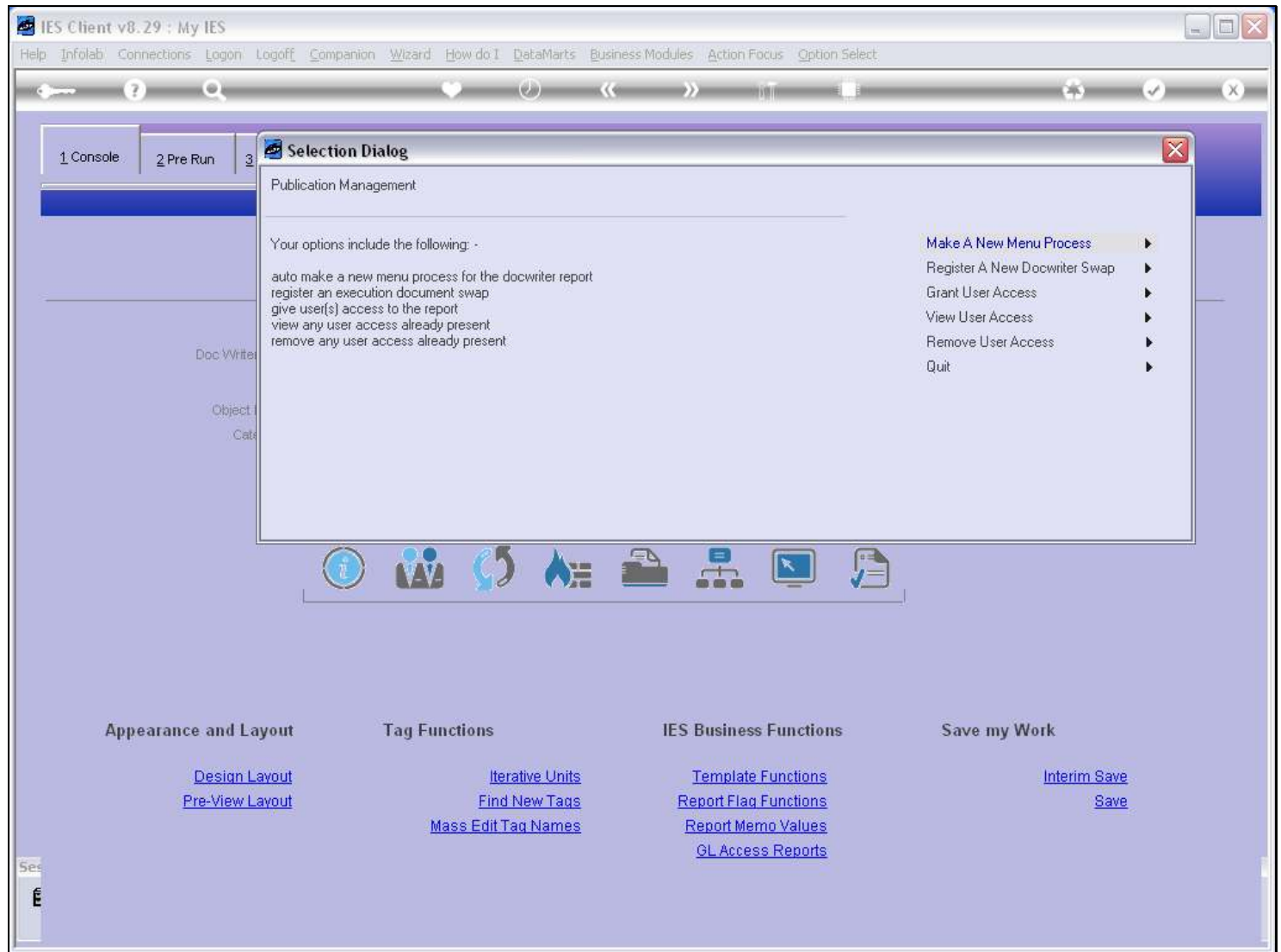
Slide 9 - Slide 9**Slide notes**

We can remove the Swap at any time, if needed.

Slide 10 - Slide 10**Slide notes**

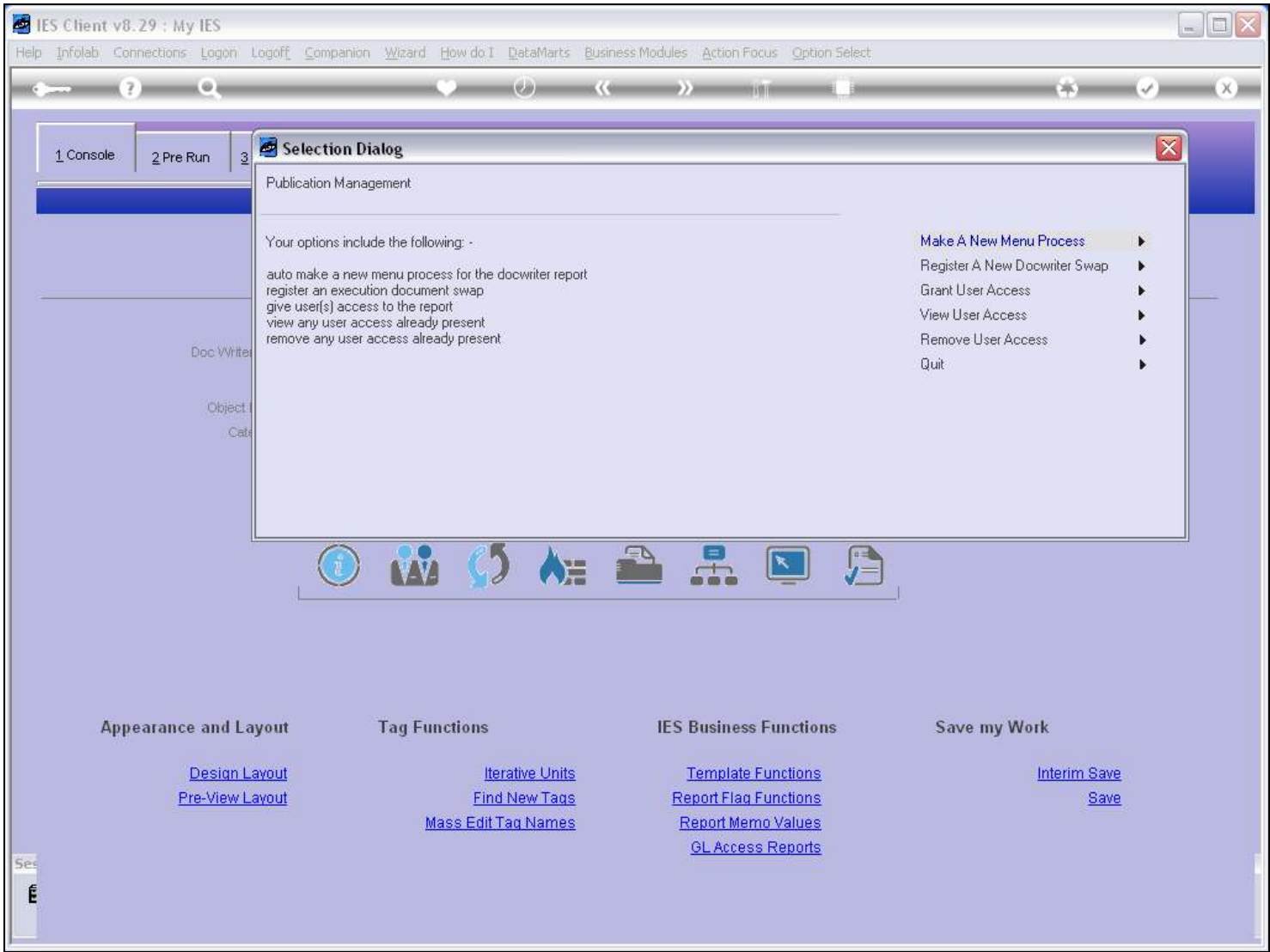
Slide 11 - Slide 11**Slide notes**

Slide 12 - Slide 12**Slide notes**

Slide 13 - Slide 13**Slide notes**

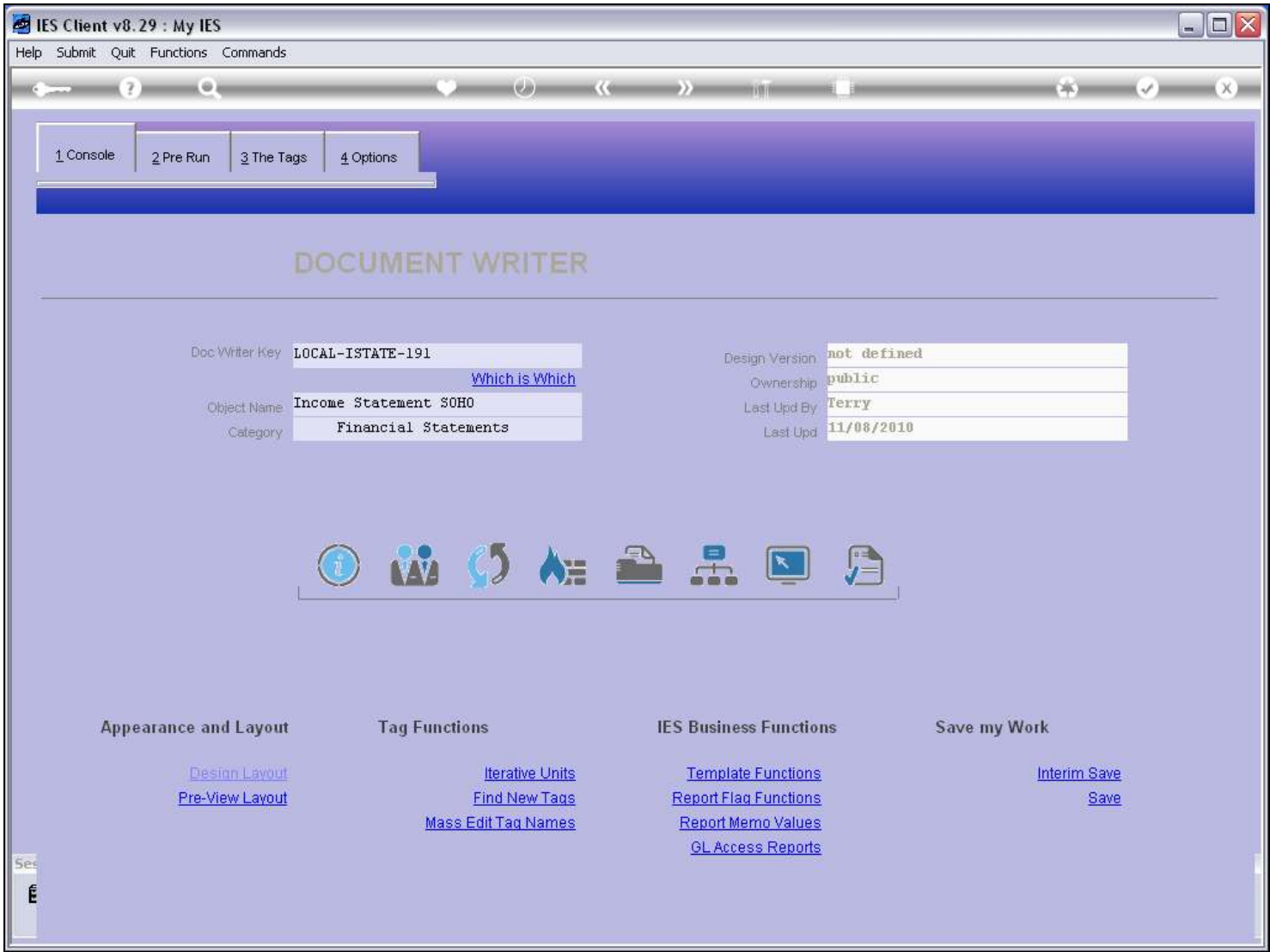
Now the Swap has been removed, and in that case the system will no longer perform the Swap.

Slide 14 - Slide 14



Slide notes

Slide 15 - Slide 15



Slide notes