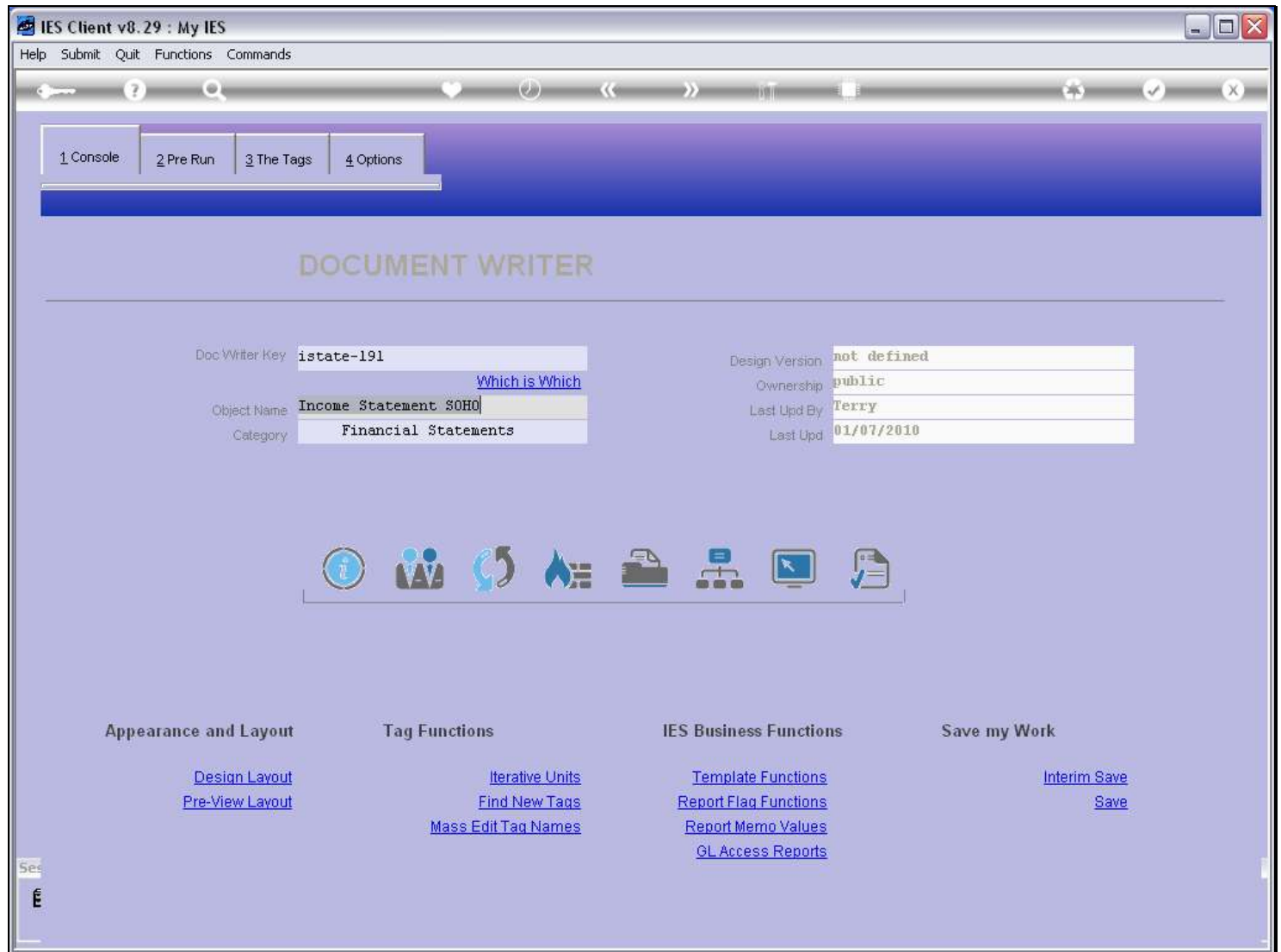


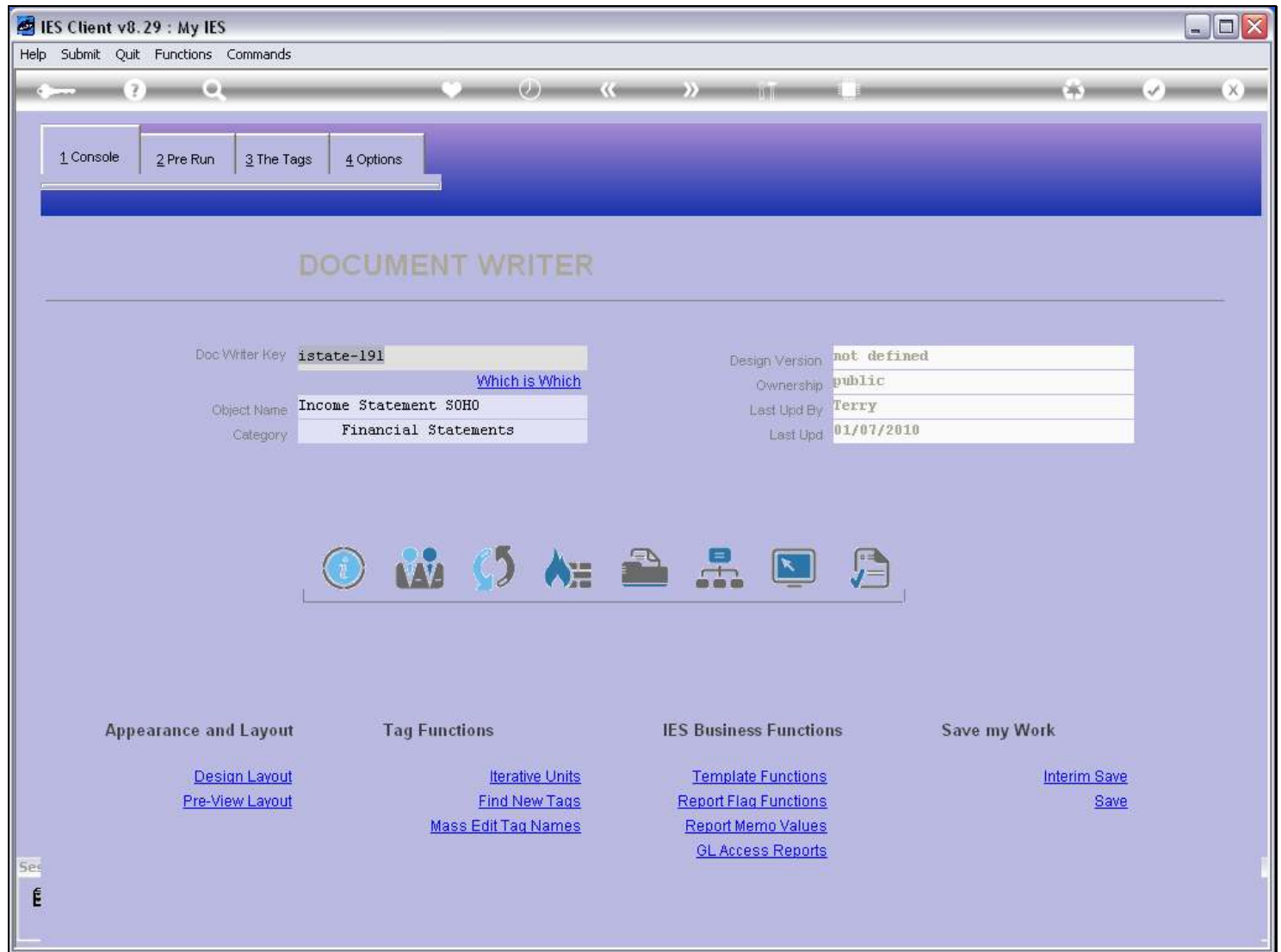
## Slide 1 - Slide 1



## Slide notes

DocWriter has an easy function to make a Copy of a Report. The most common purpose with a Copy is to have a good starting point for a similar Report, which we can then change as little or as much as we need to. For example, to have a local version of a Report that we will use as a Swap, is a common reason to make a Copy.

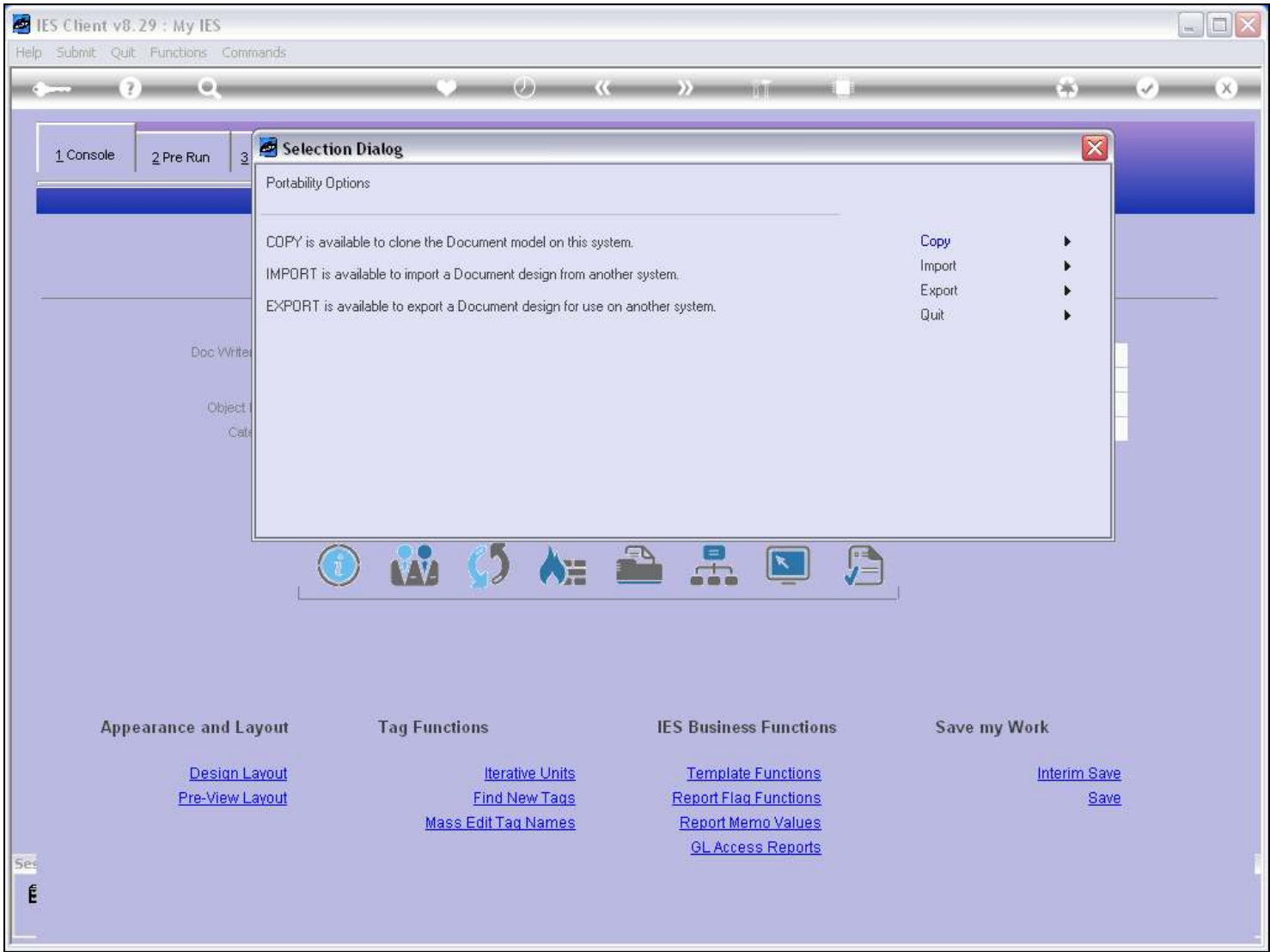
## Slide 2 - Slide 2



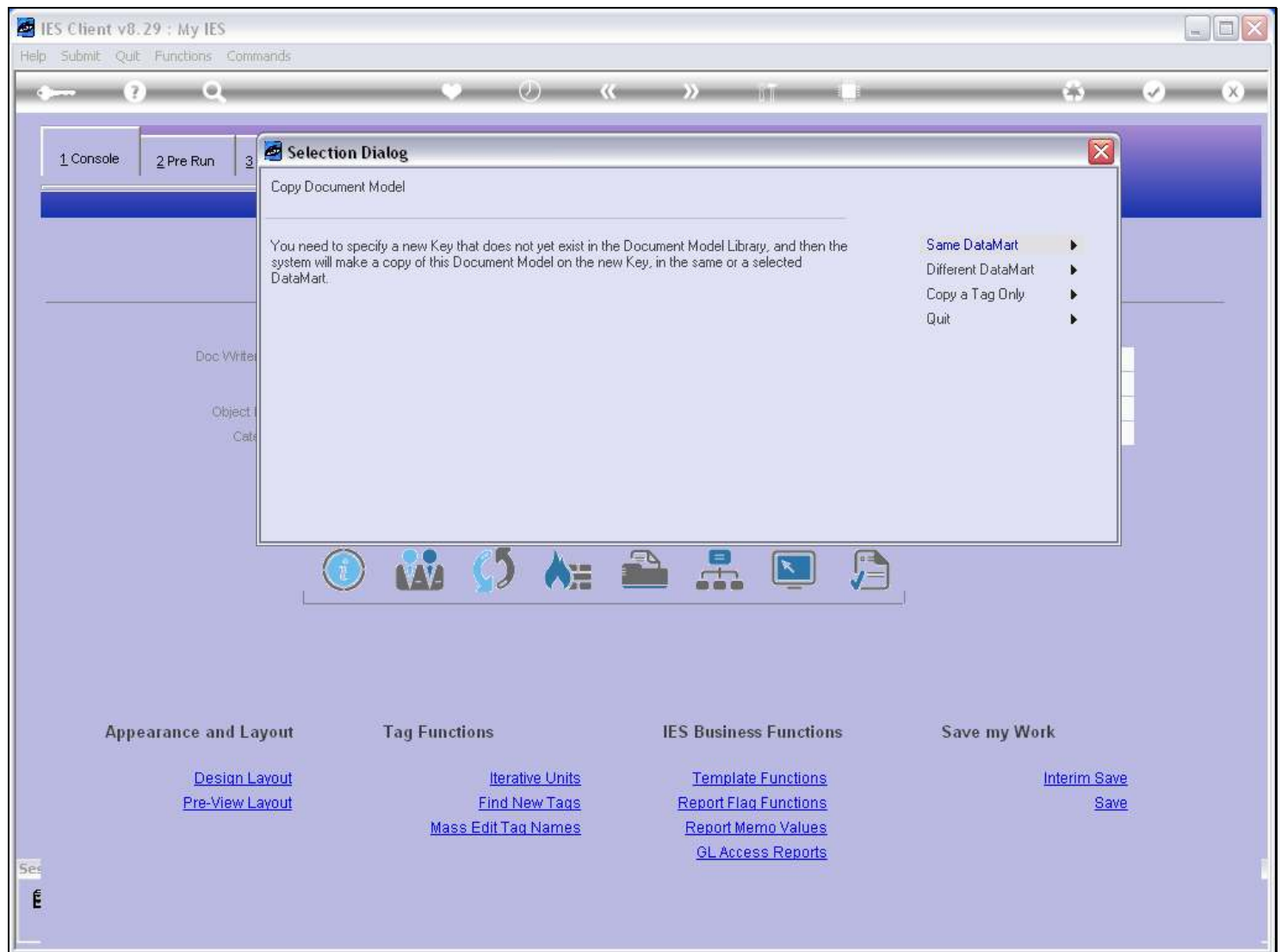
## Slide notes

We choose the 'Copy' function.

Slide 3 - Slide 3

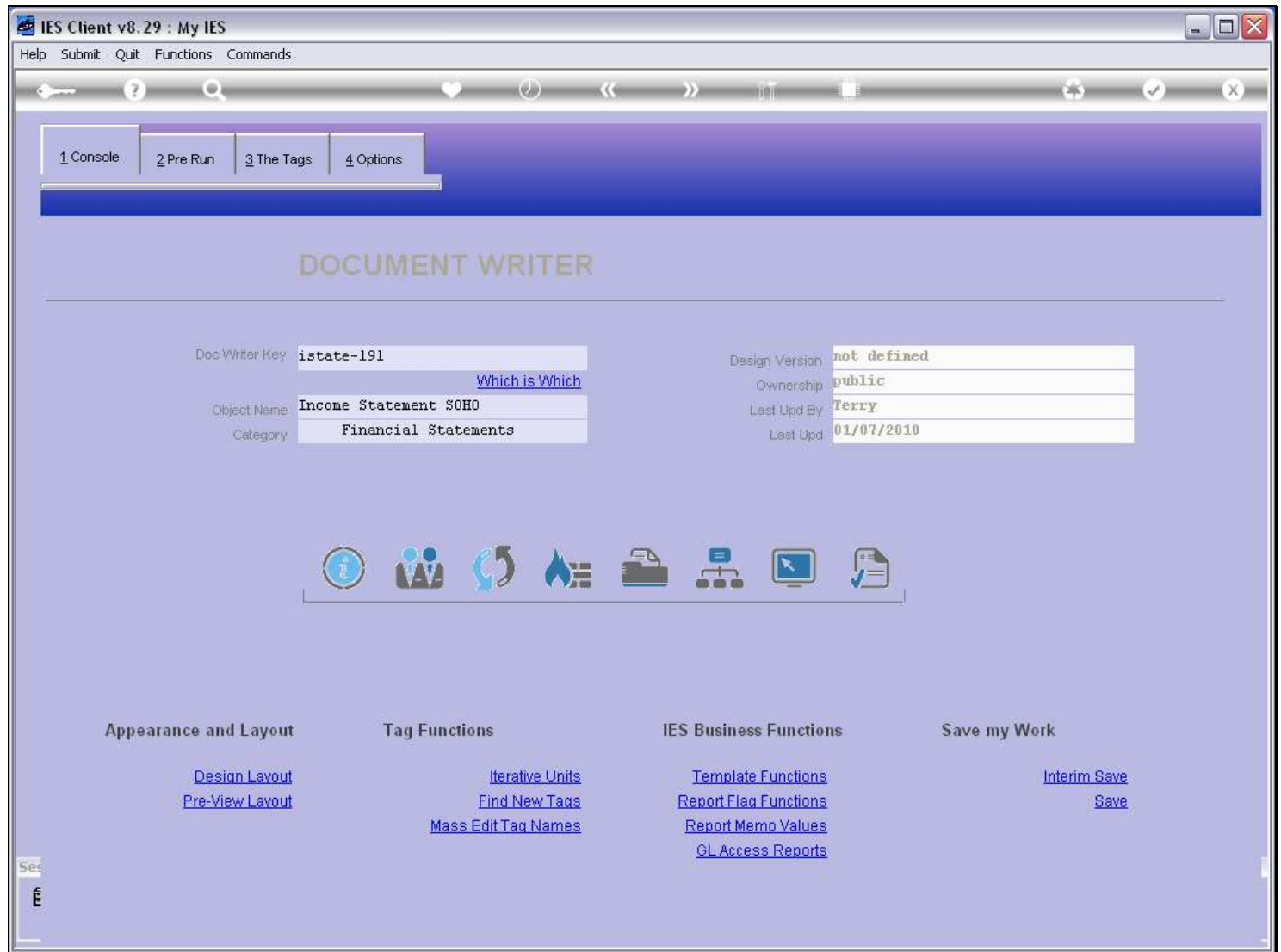


Slide notes

**Slide 4 - Slide 4****Slide notes**

We can copy to the current Datamart, or to another. In this example, we will copy locally in the Datamart.

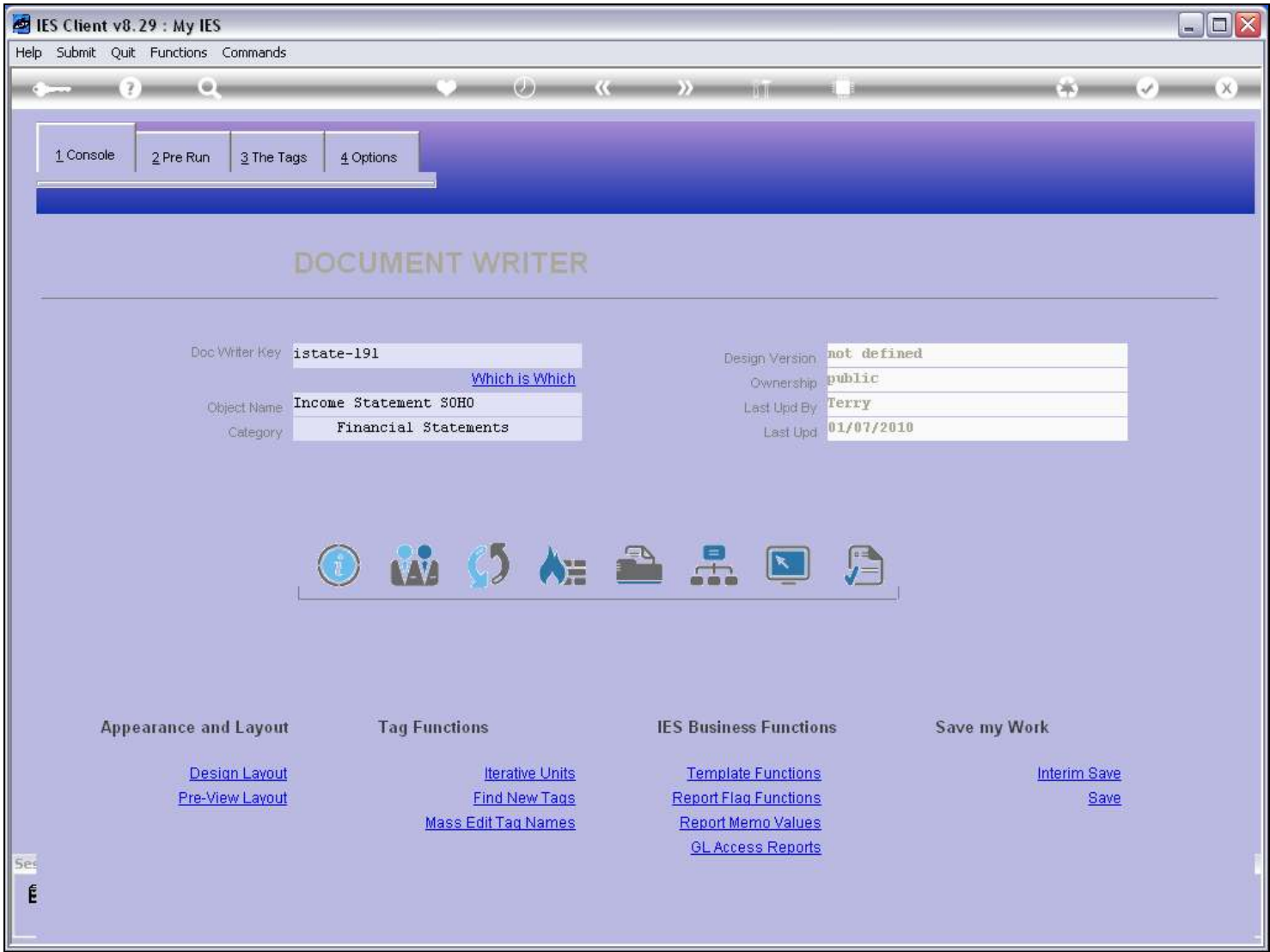
## Slide 5 - Slide 5



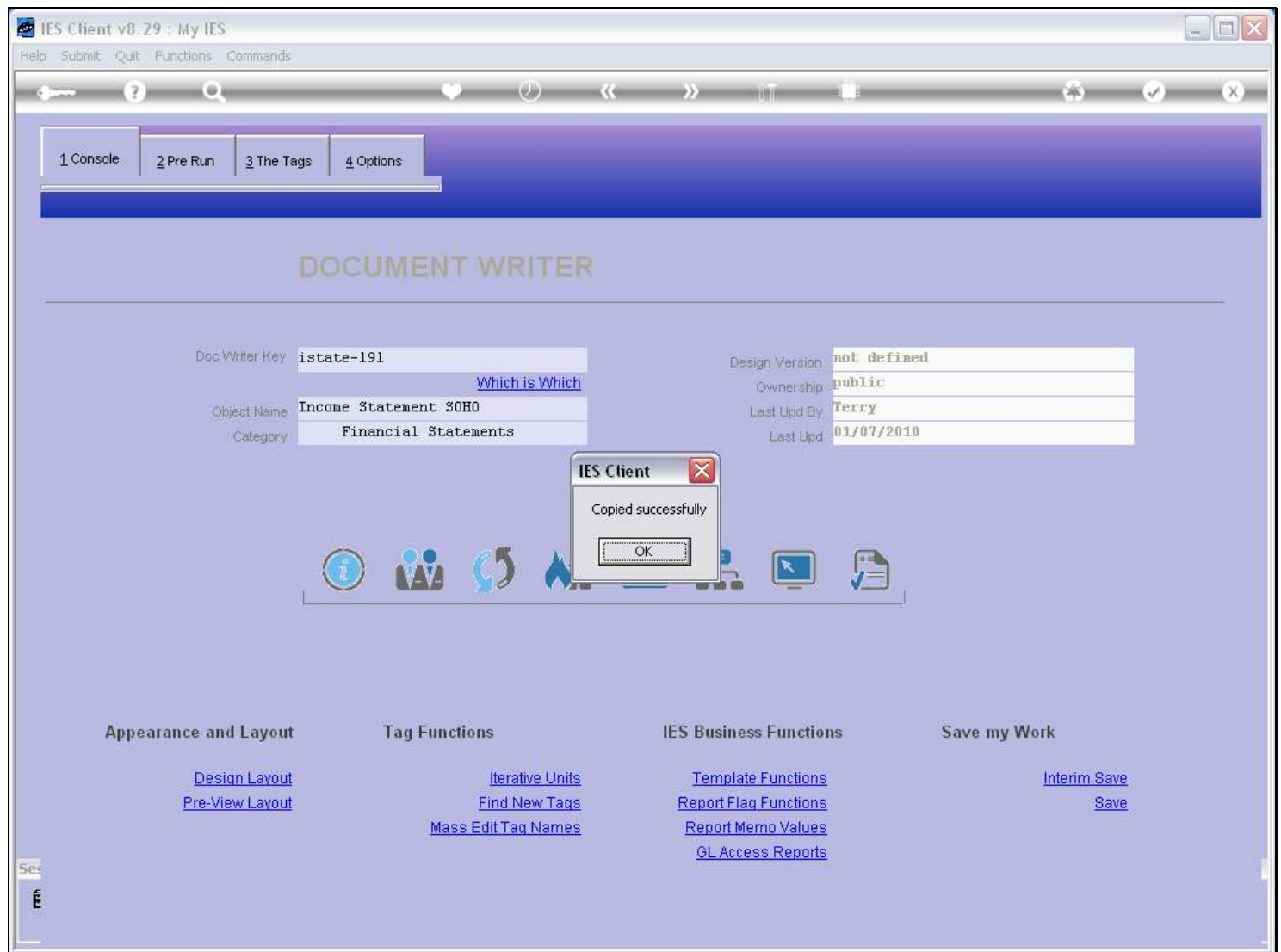
### Slide notes

We are free to choose a new Key of our own liking, as long as it is not yet in use. In the case of a local version for the same report, it is a good idea to just prefix 'local' to the current Key.

Slide 6 - Slide 6

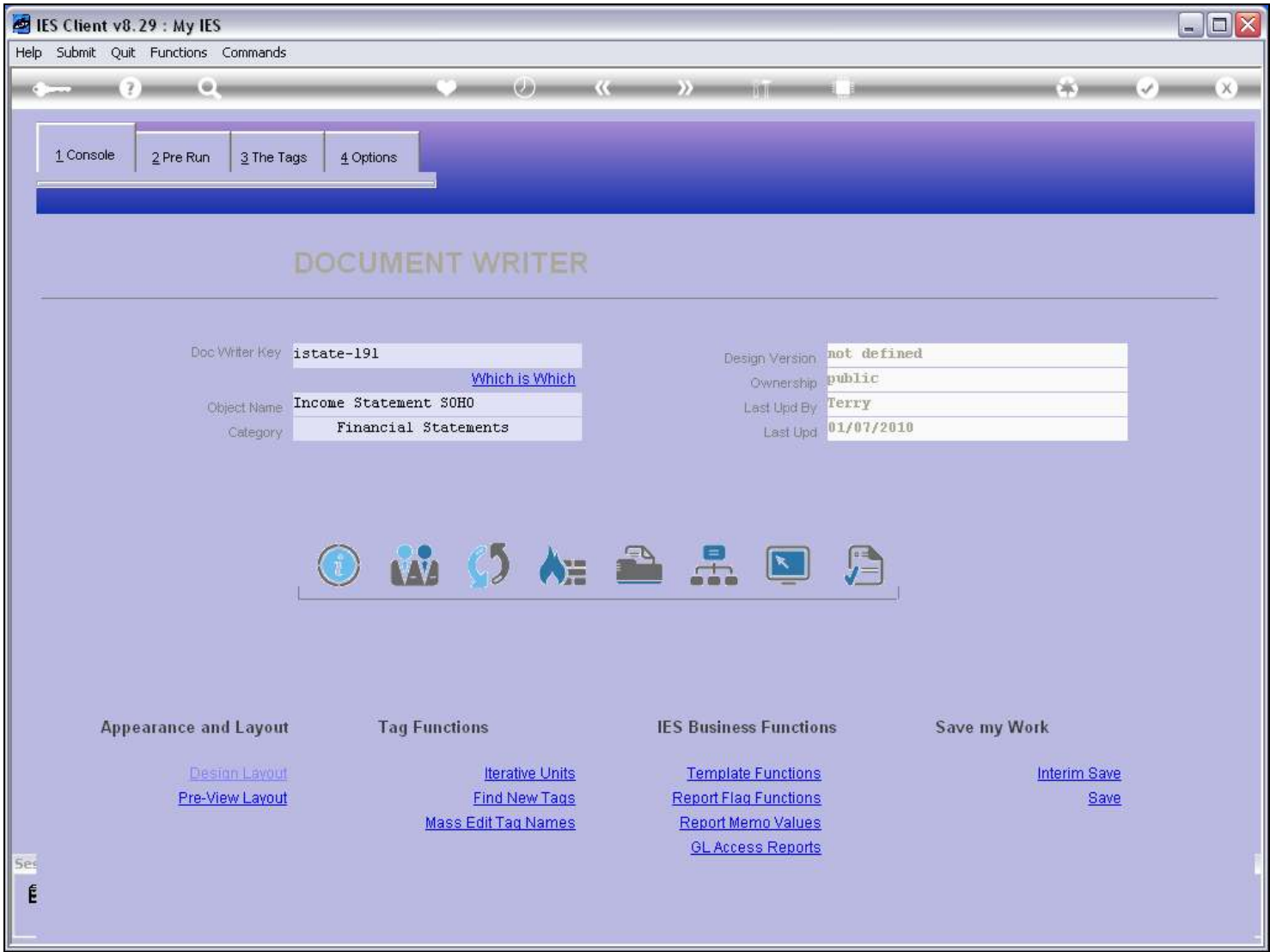


Slide notes

**Slide 7 - Slide 7****Slide notes**

The Copy has been made, so let's retrieve it.

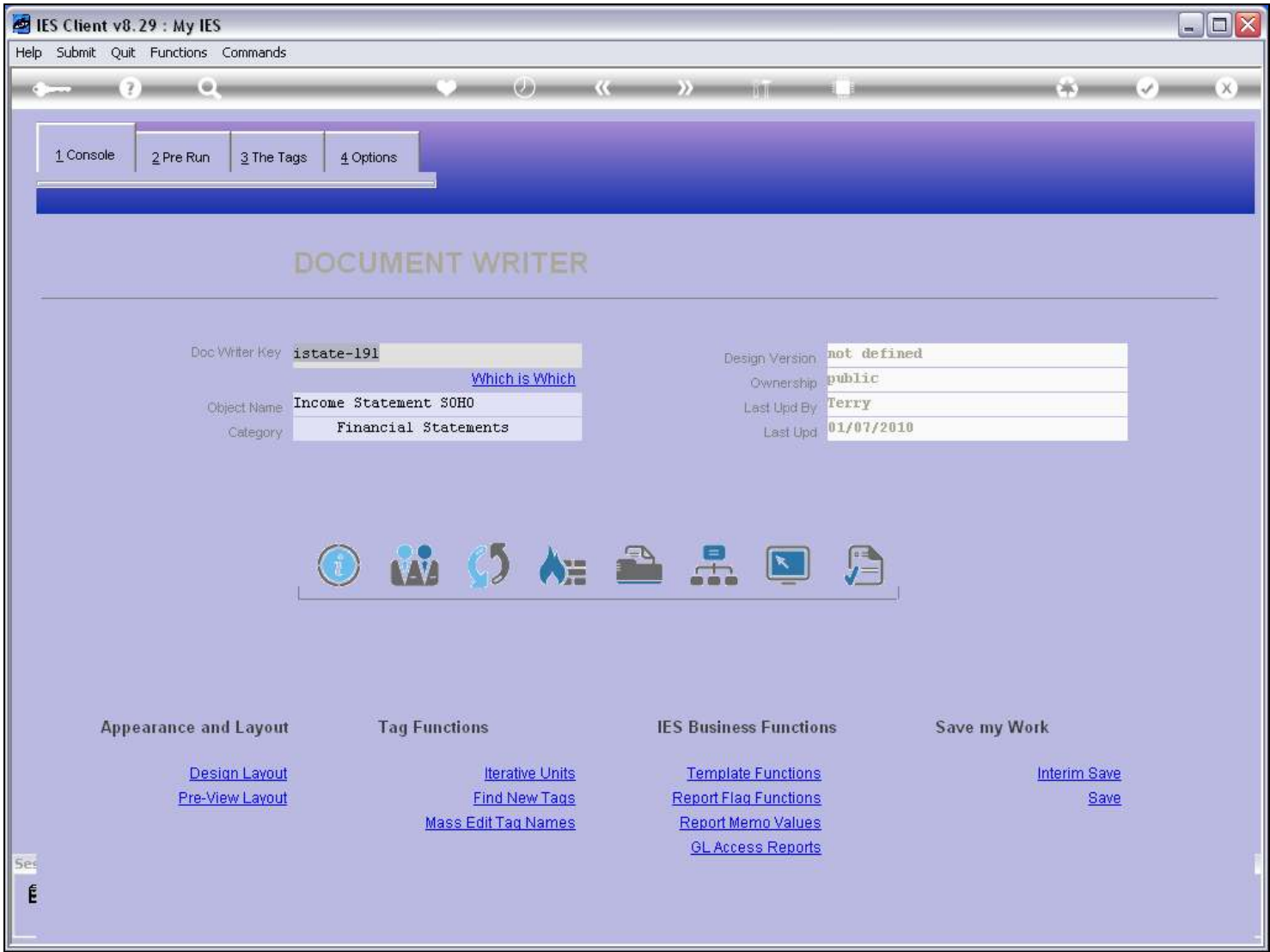
Slide 8 - Slide 8



Slide notes

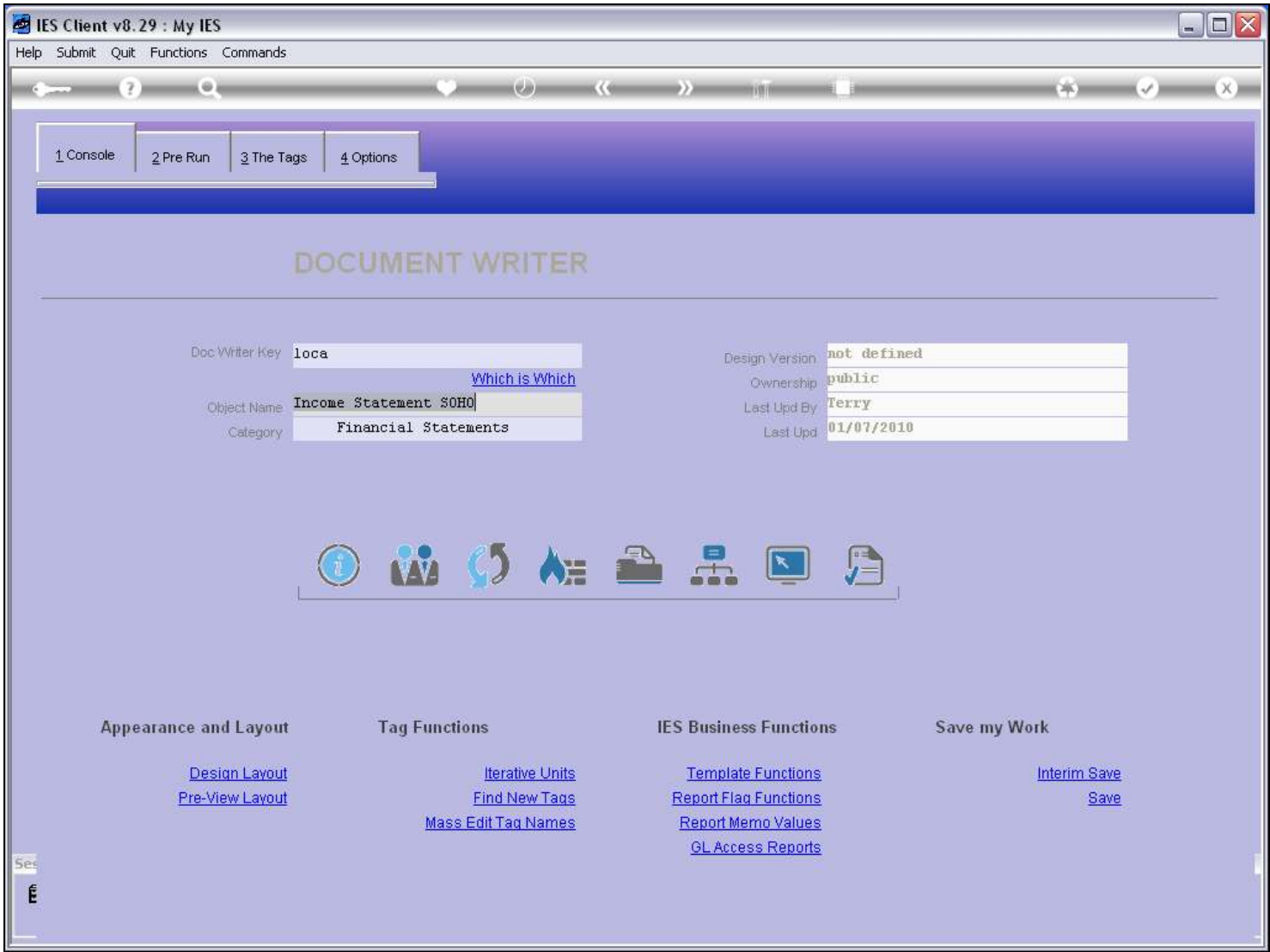


Slide 9 - Slide 9

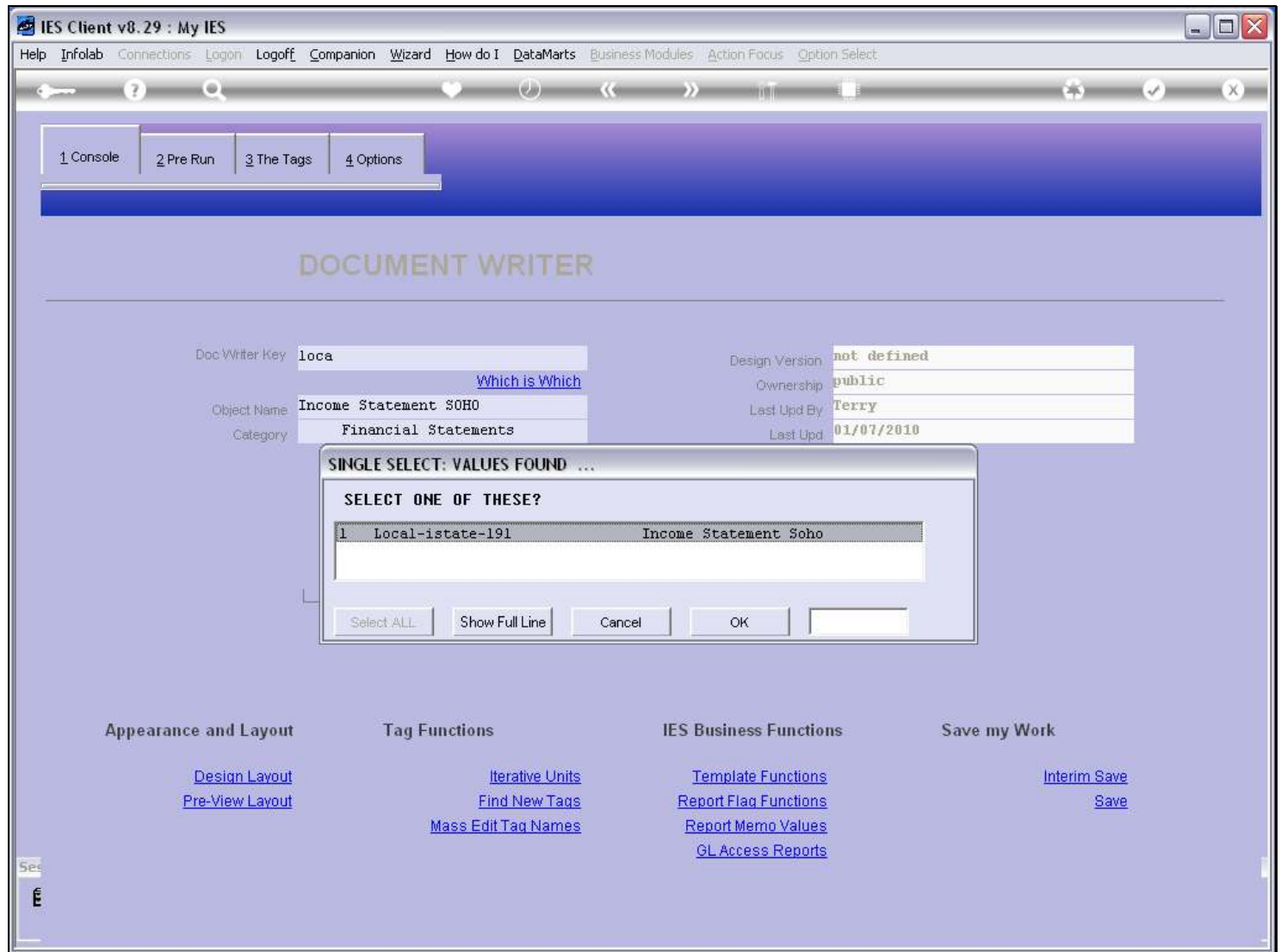


Slide notes

Slide 10 - Slide 10

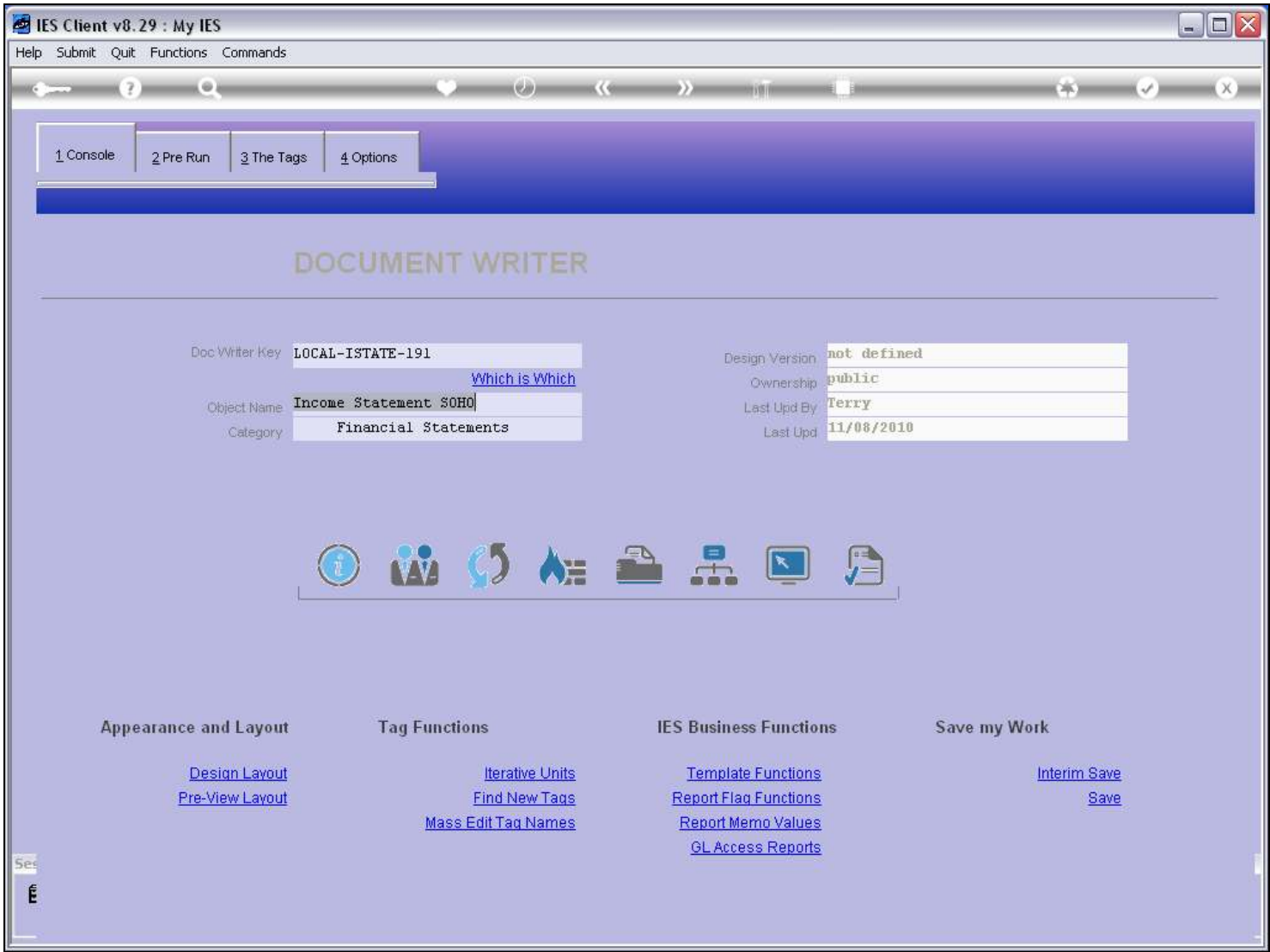


Slide notes

**Slide 11 - Slide 11****Slide notes**

Here is the new report that has just been created. We can now retrieve it and work further on it.

Slide 12 - Slide 12



Slide notes