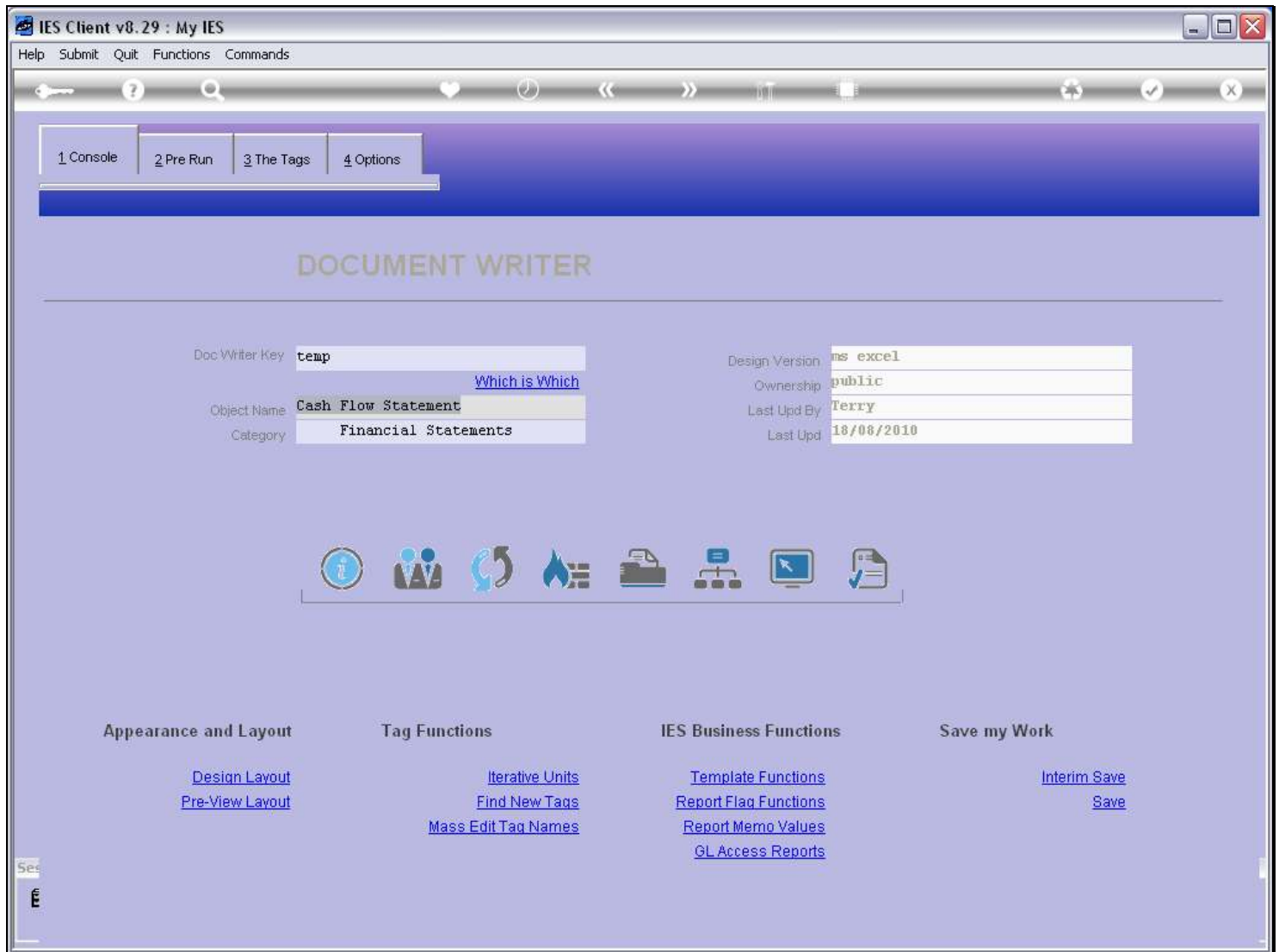
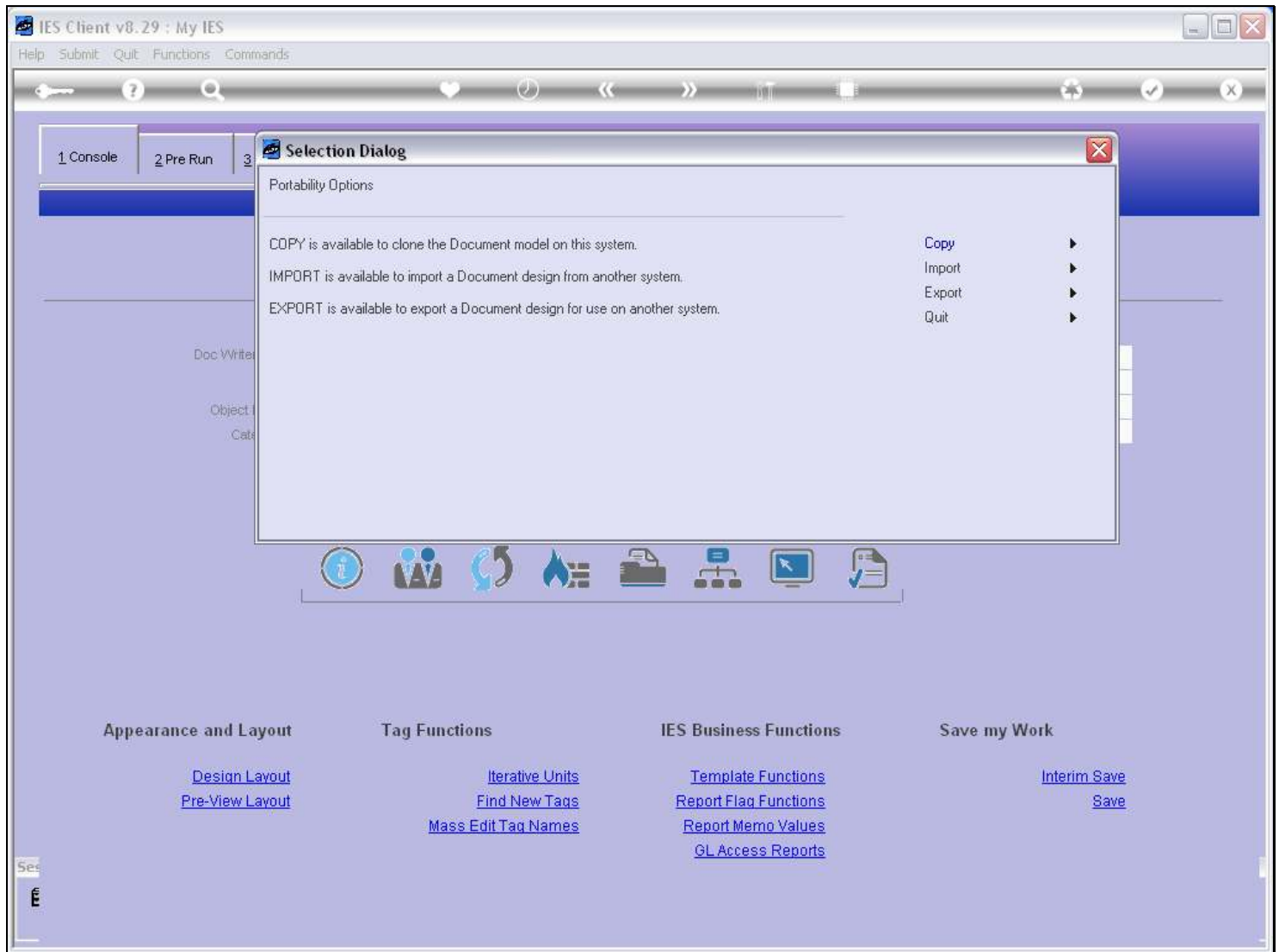


Slide 1 - Slide 1

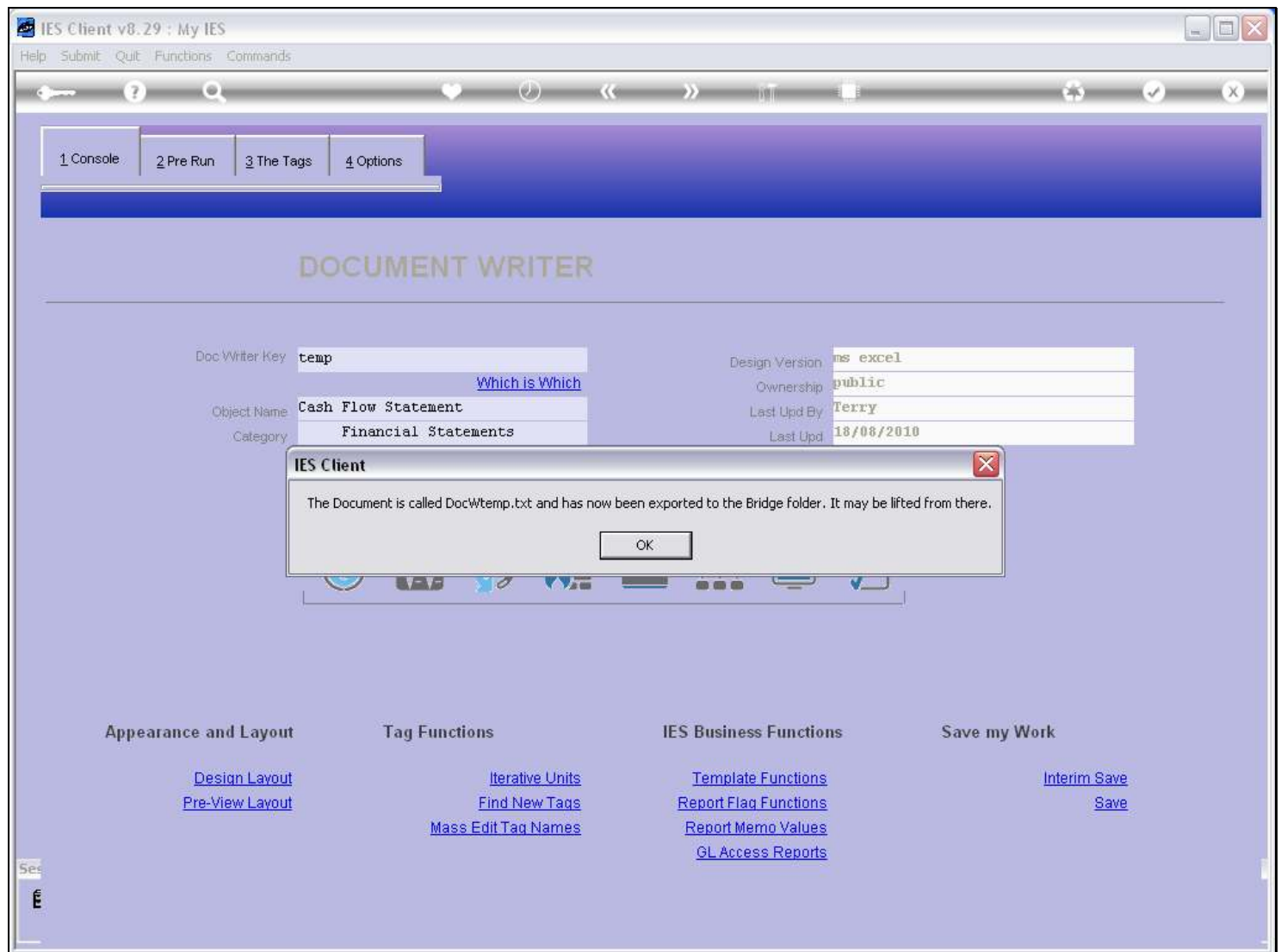


Slide notes

We can of course easily copy a Report in the same Datamart or to another Datamart on the same Server, but what do we do if we want to copy a Report to another Server?

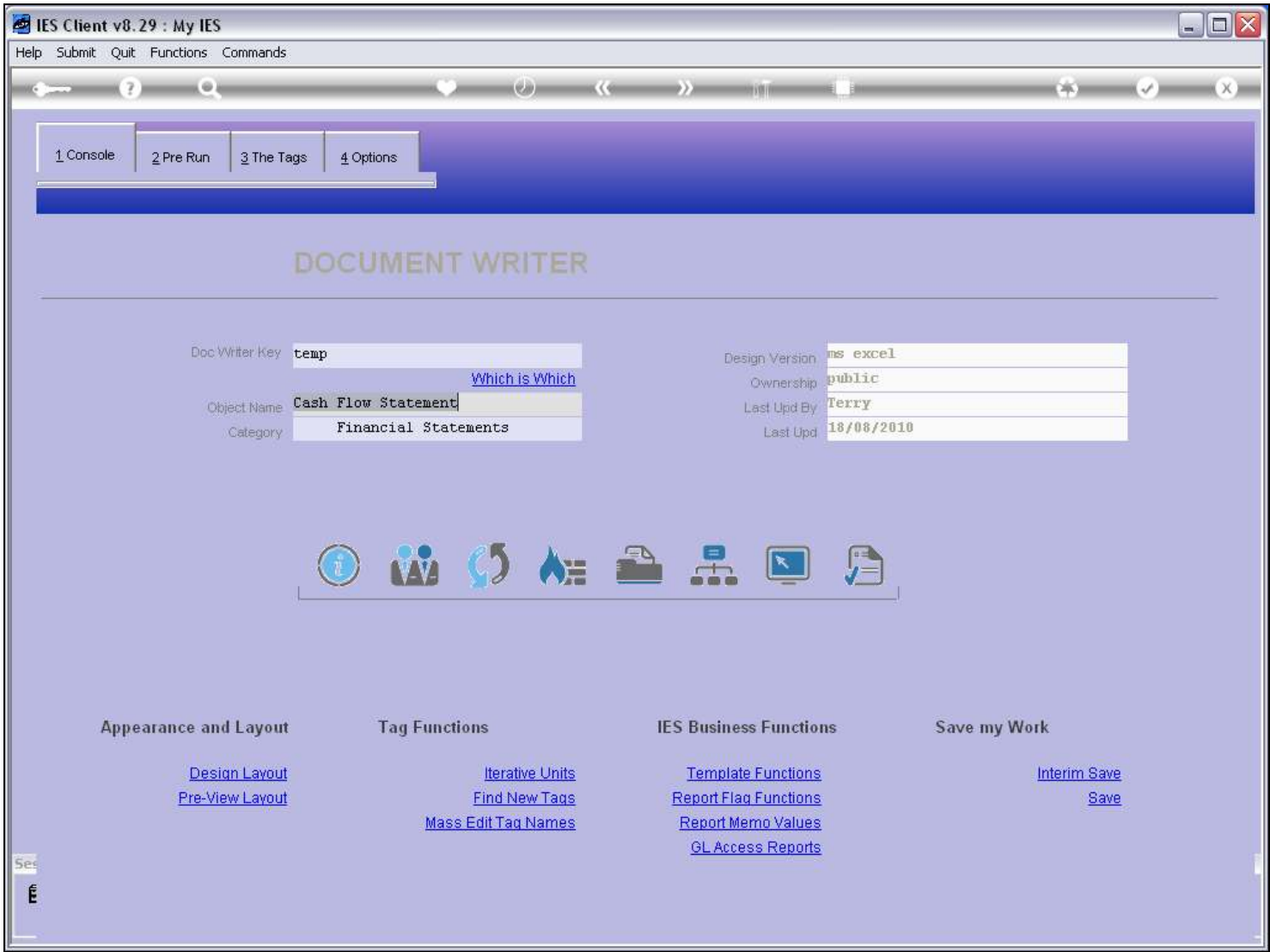
Slide 2 - Slide 2**Slide notes**

The Copy function includes an Export option.

Slide 3 - Slide 3**Slide notes**

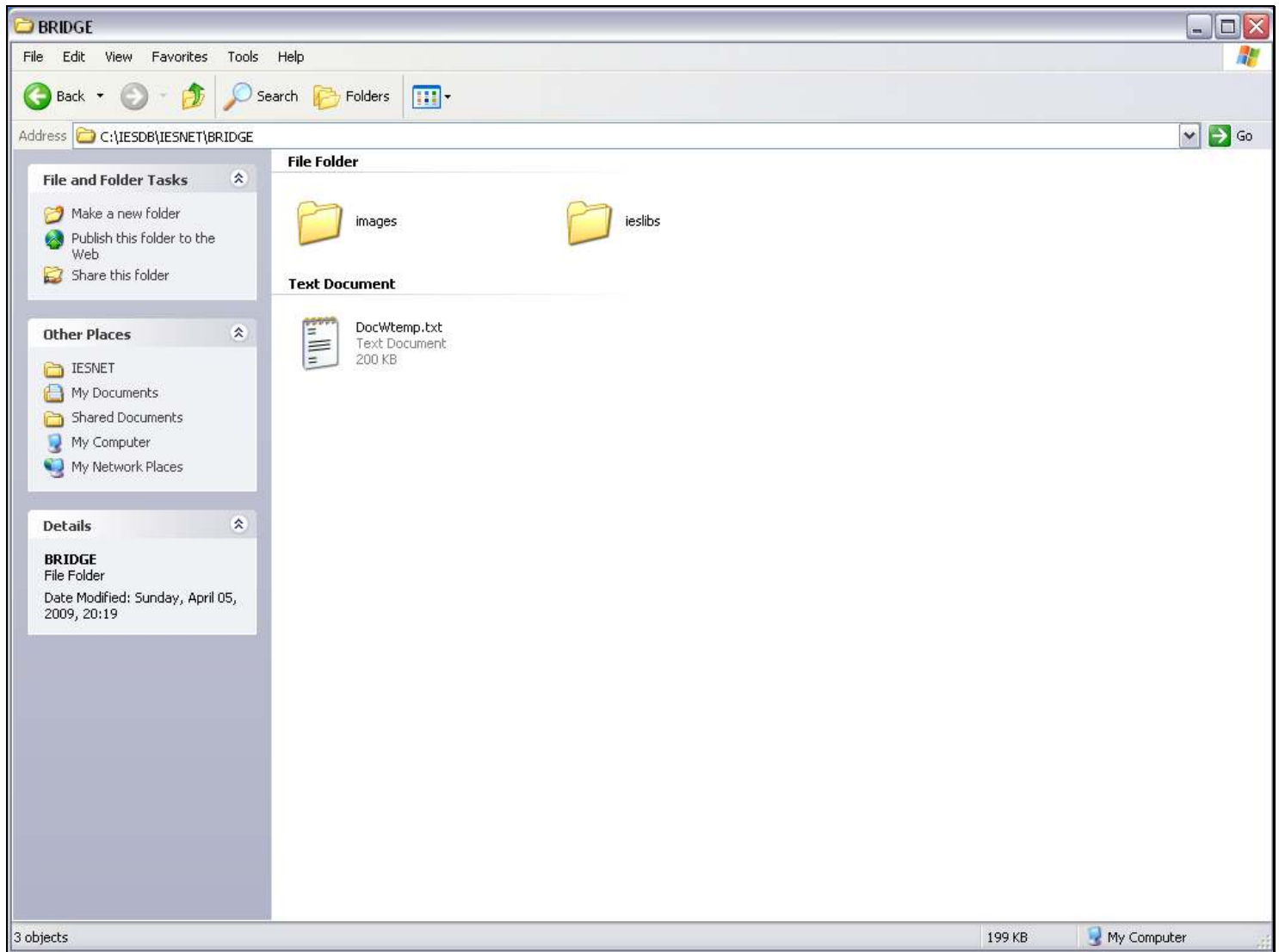
And this function packs all the required components for this Report into a Text File, which is placed on the BRIDGE Folder.

Slide 4 - Slide 4



Slide notes

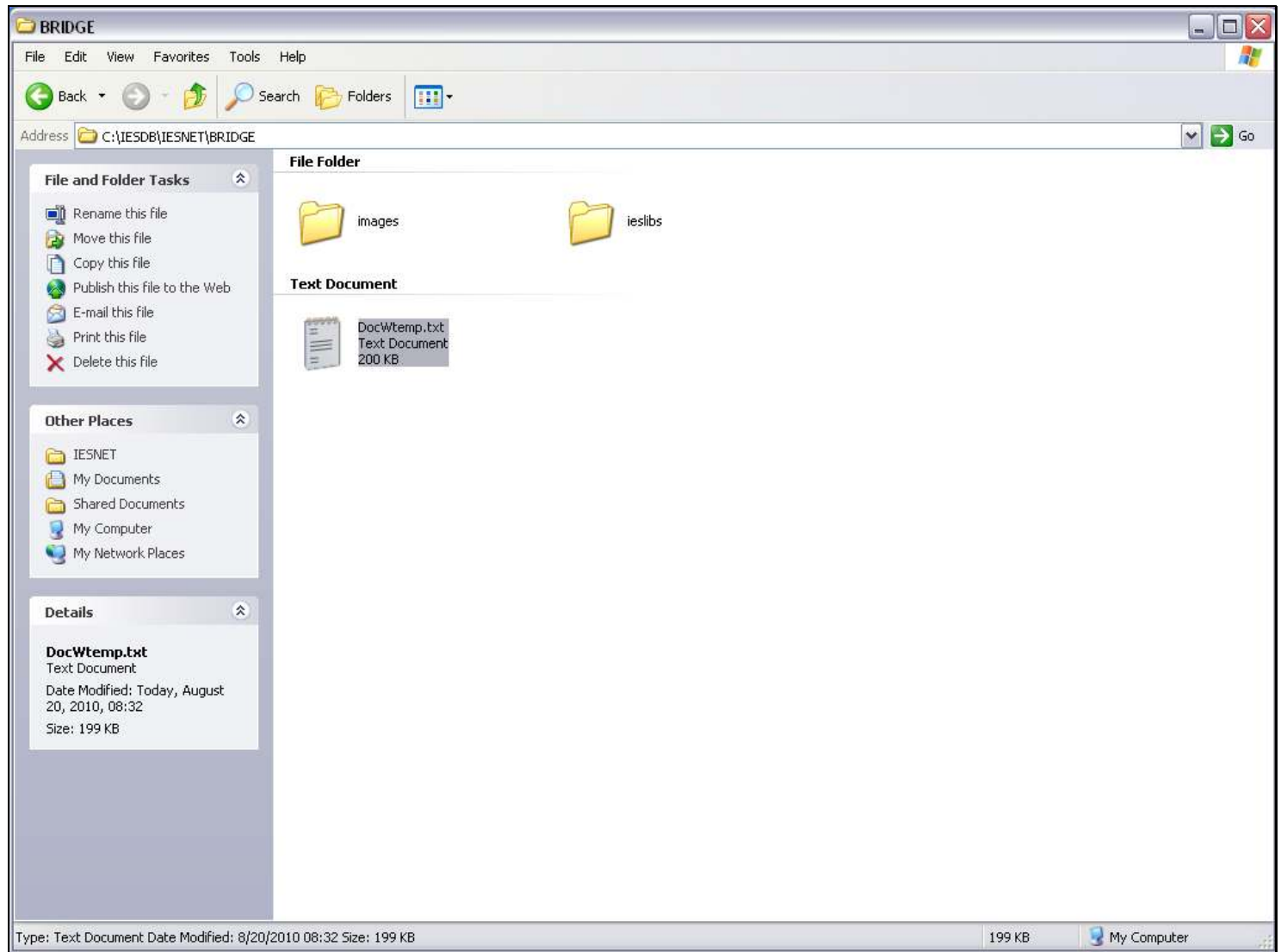
Slide 5 - Slide 5



Slide notes

From here, we can lift the file and send it wherever we want, and it can be placed on the BRIDGE folder of any other IES Server and then be Imported there, with the Import option.

Slide 6 - Slide 6



Slide notes