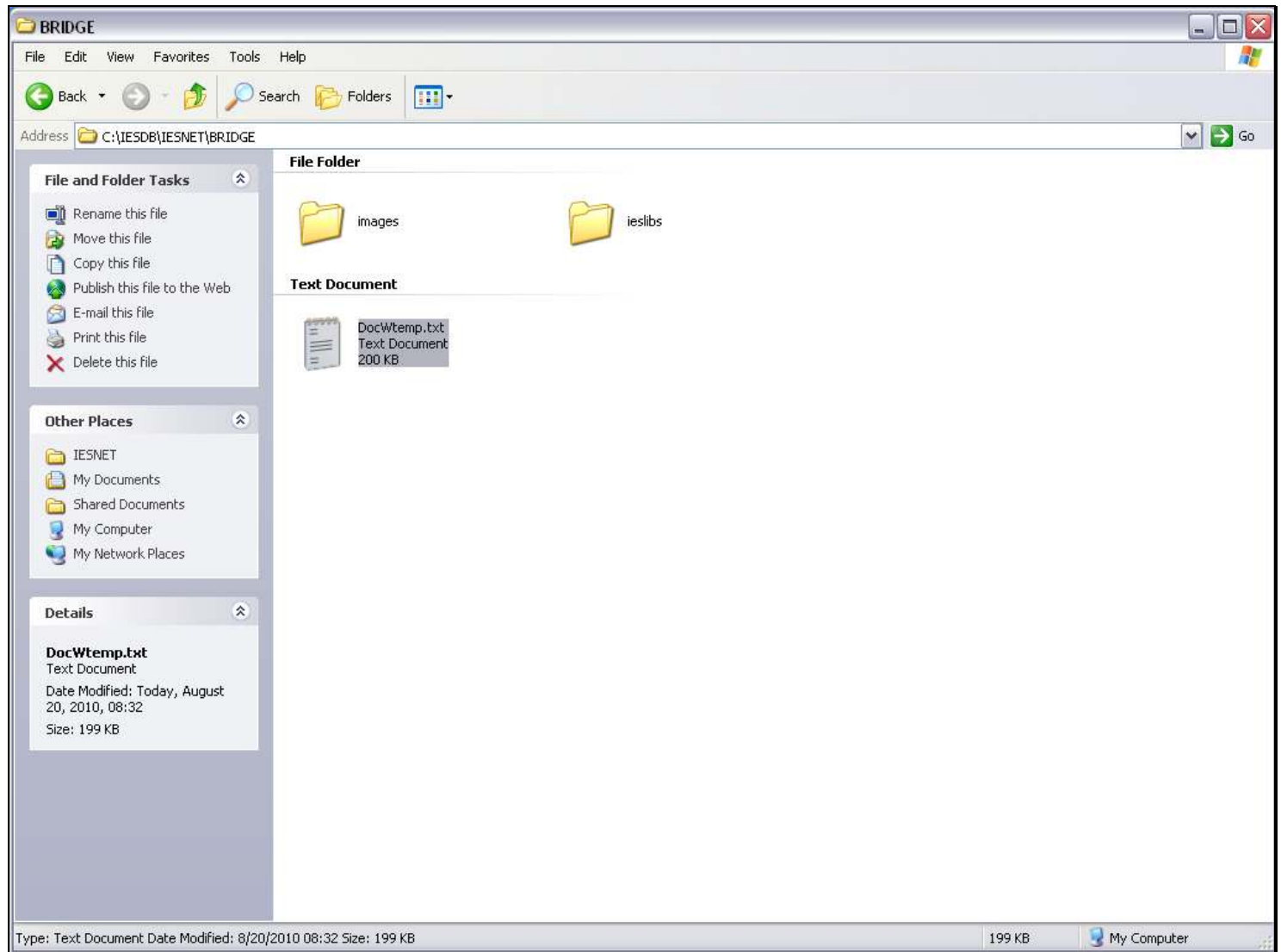


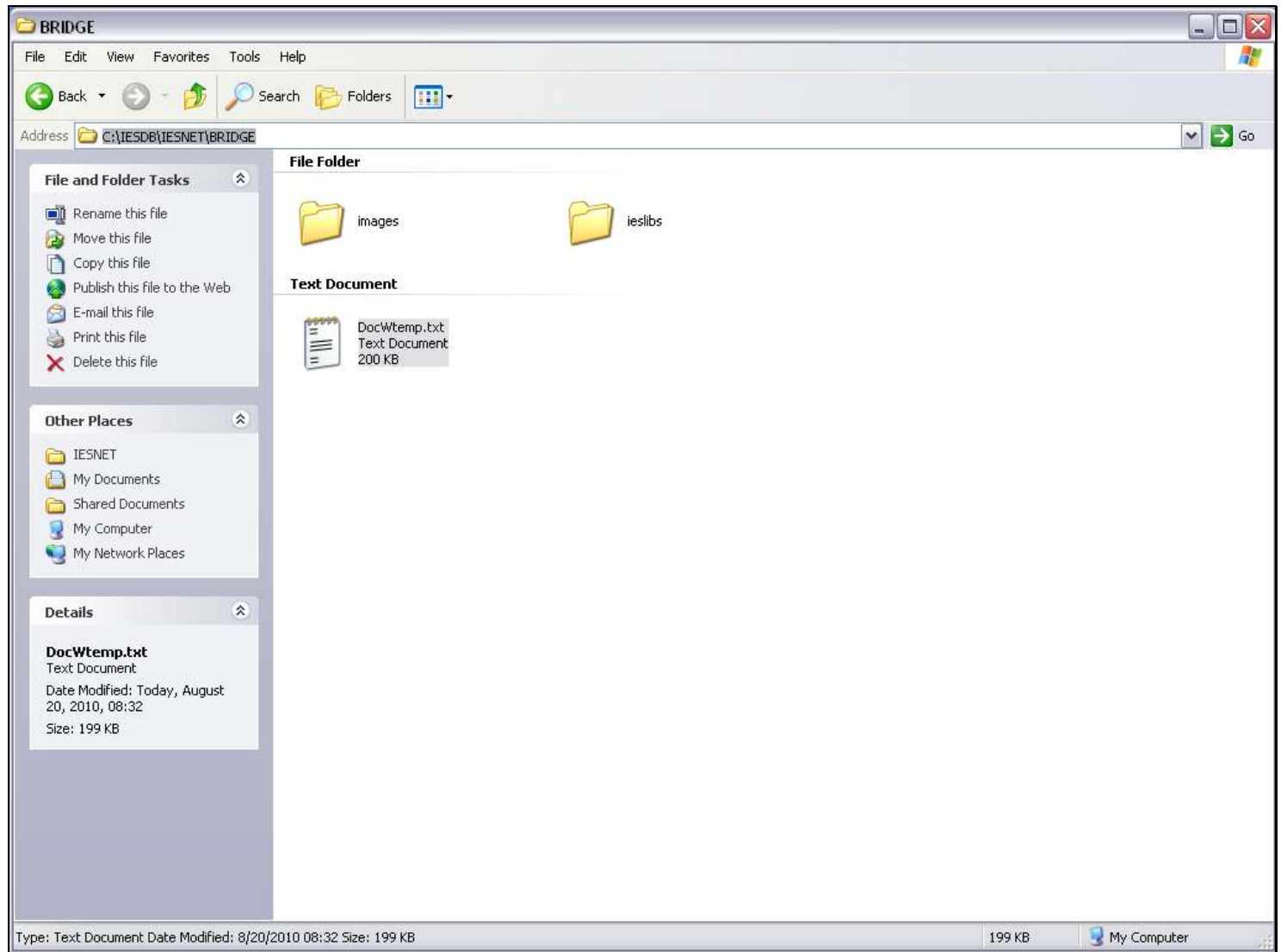
## Slide 1 - Slide 1



## Slide notes

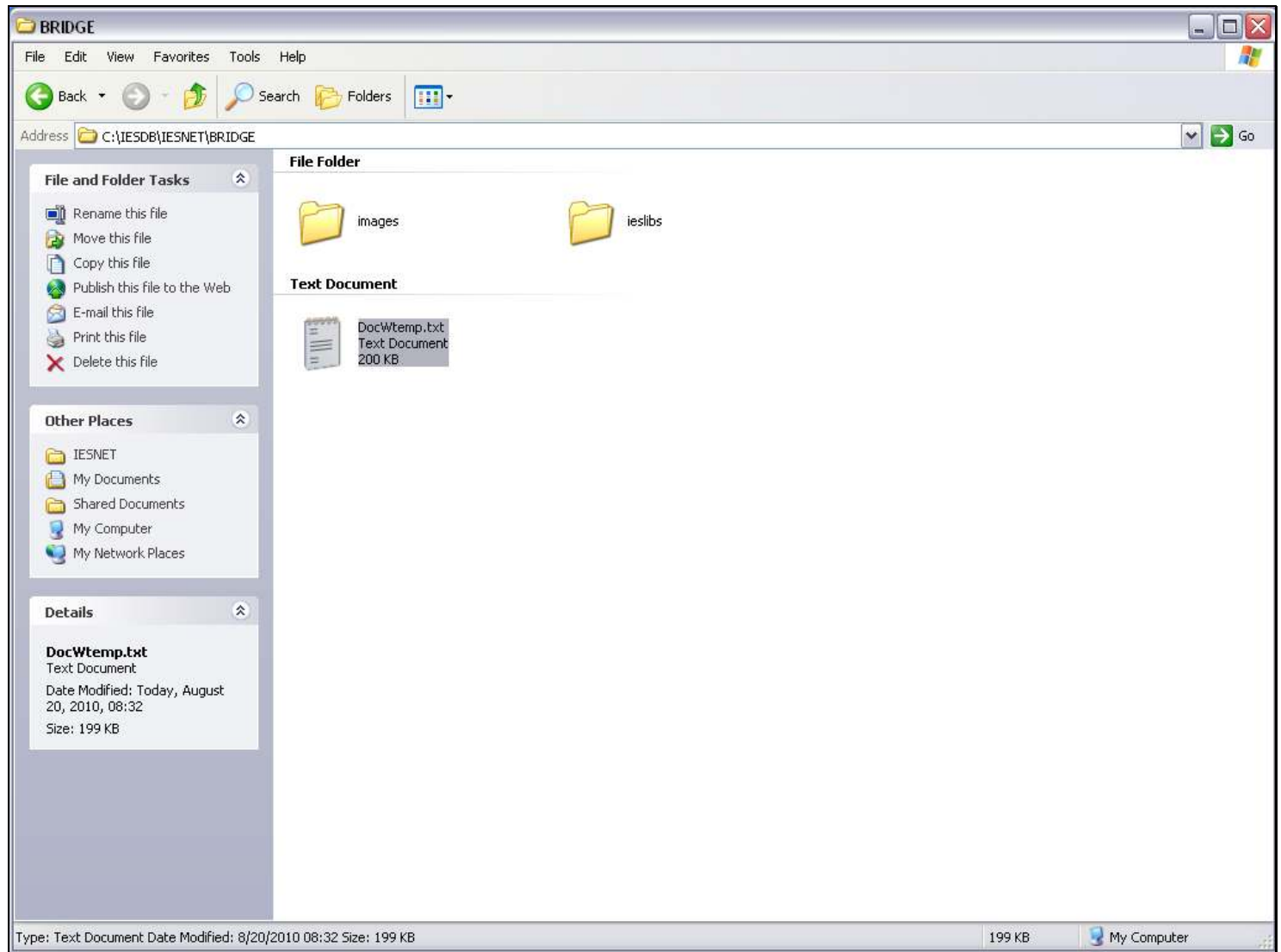
A DocWriter Report that was previously exported elsewhere can be placed on the local BRIDGE folder of an IES Server, and the system will be able to recognize it as a DocWriter Report and import it to the local DataMart.

## Slide 2 - Slide 2

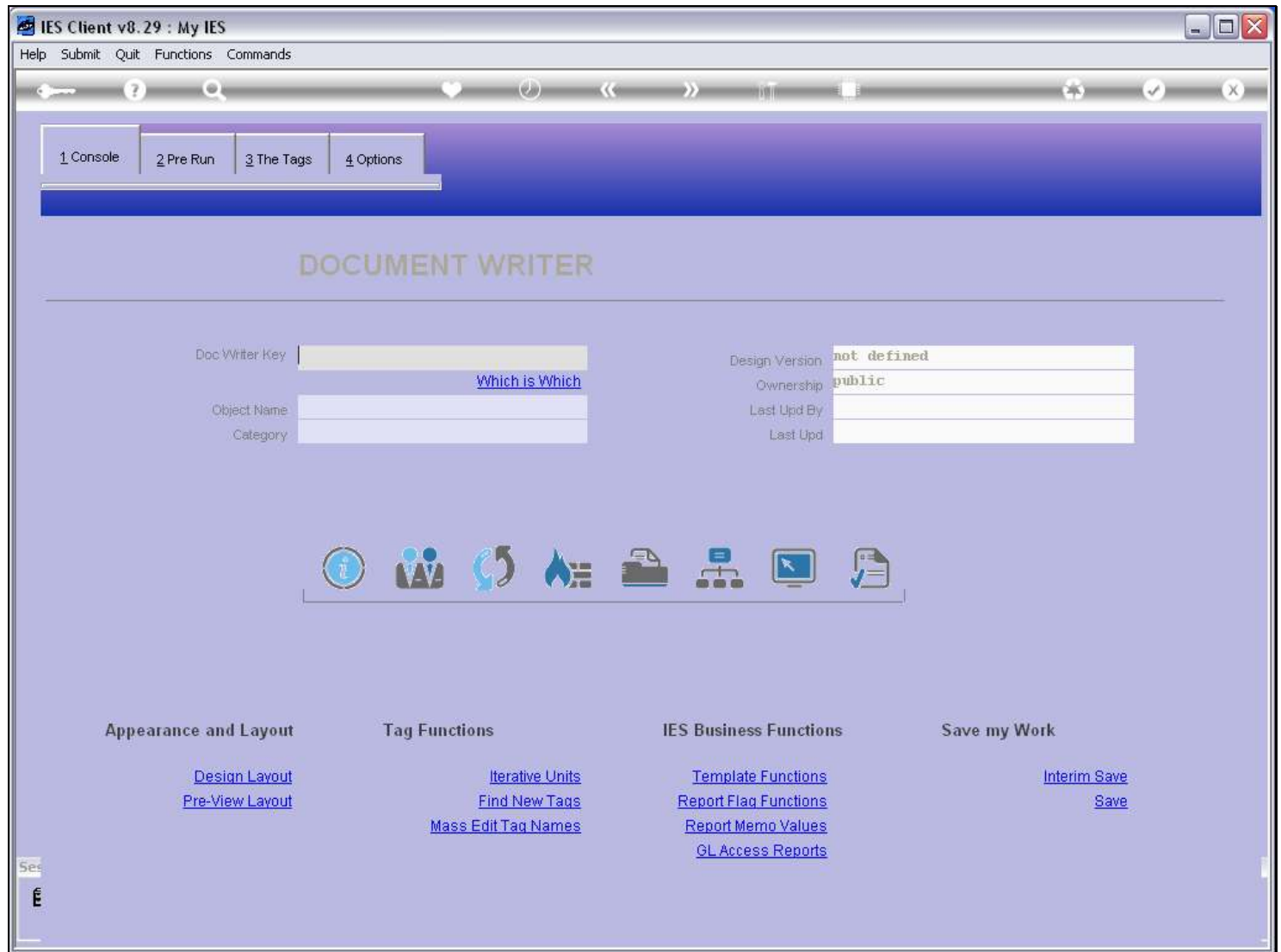


## Slide notes

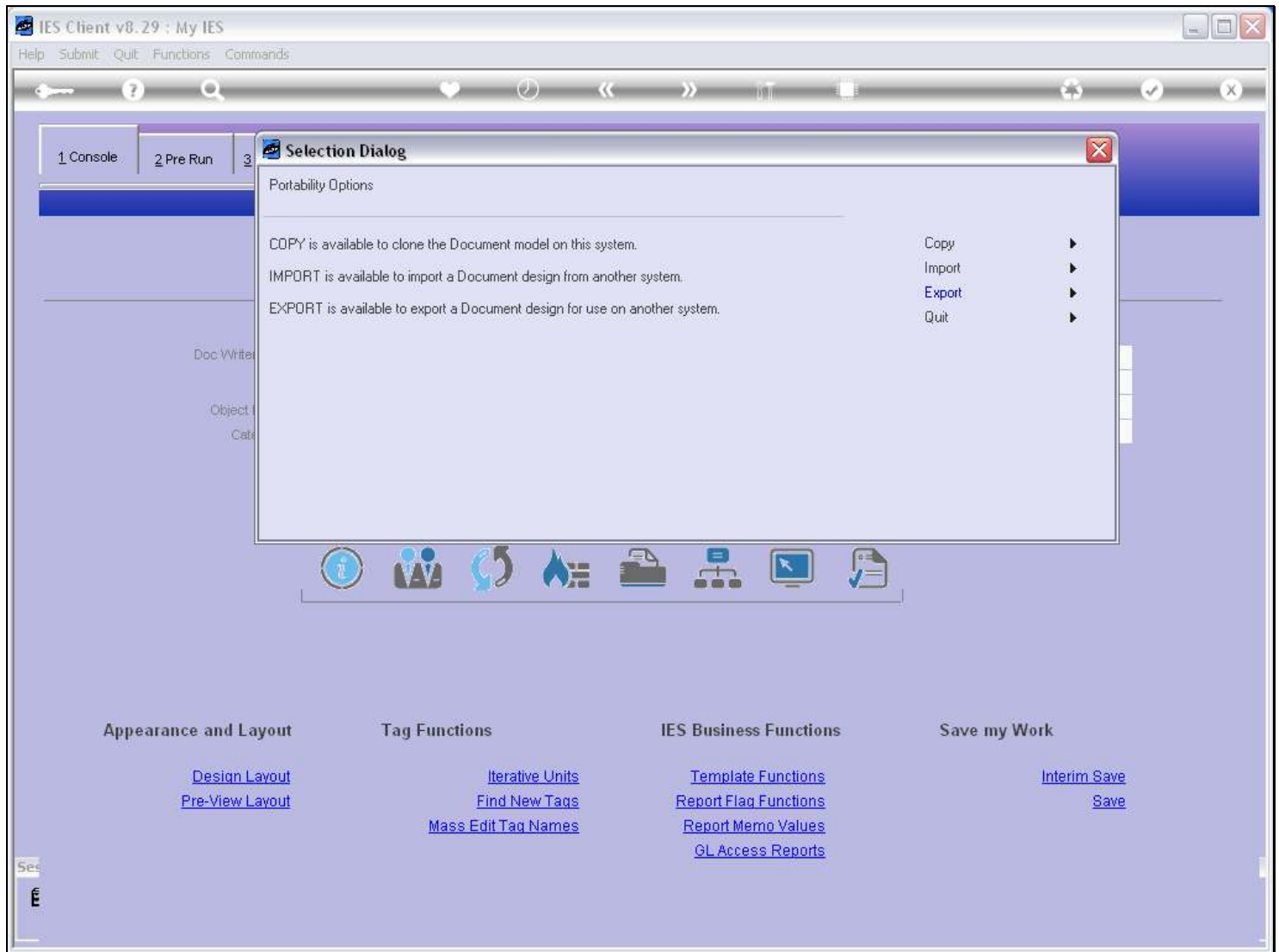
## Slide 3 - Slide 3



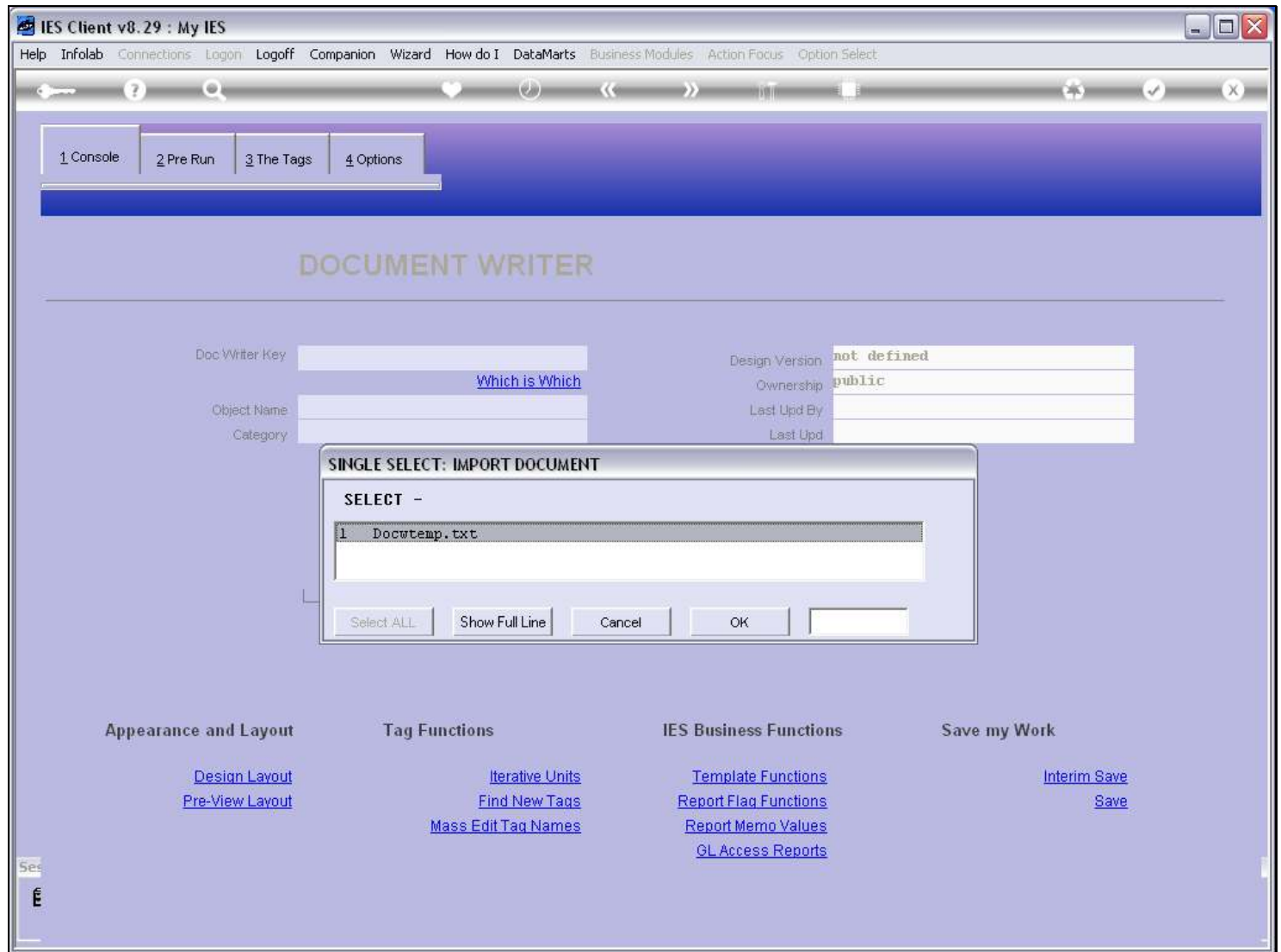
## Slide notes

**Slide 4 - Slide 4****Slide notes**

We use the Copy function.

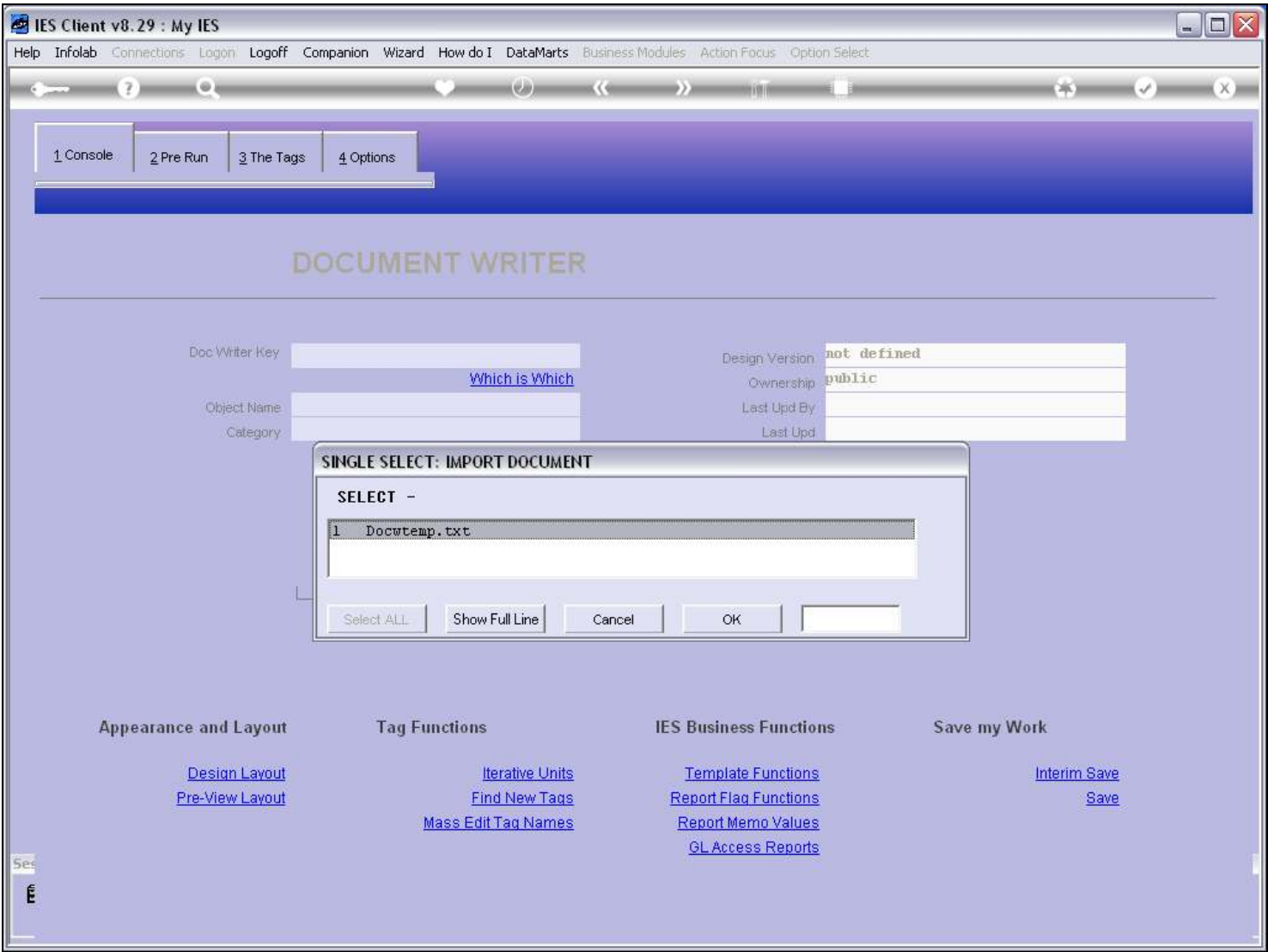
**Slide 5 - Slide 5****Slide notes**

And we choose the Import option.

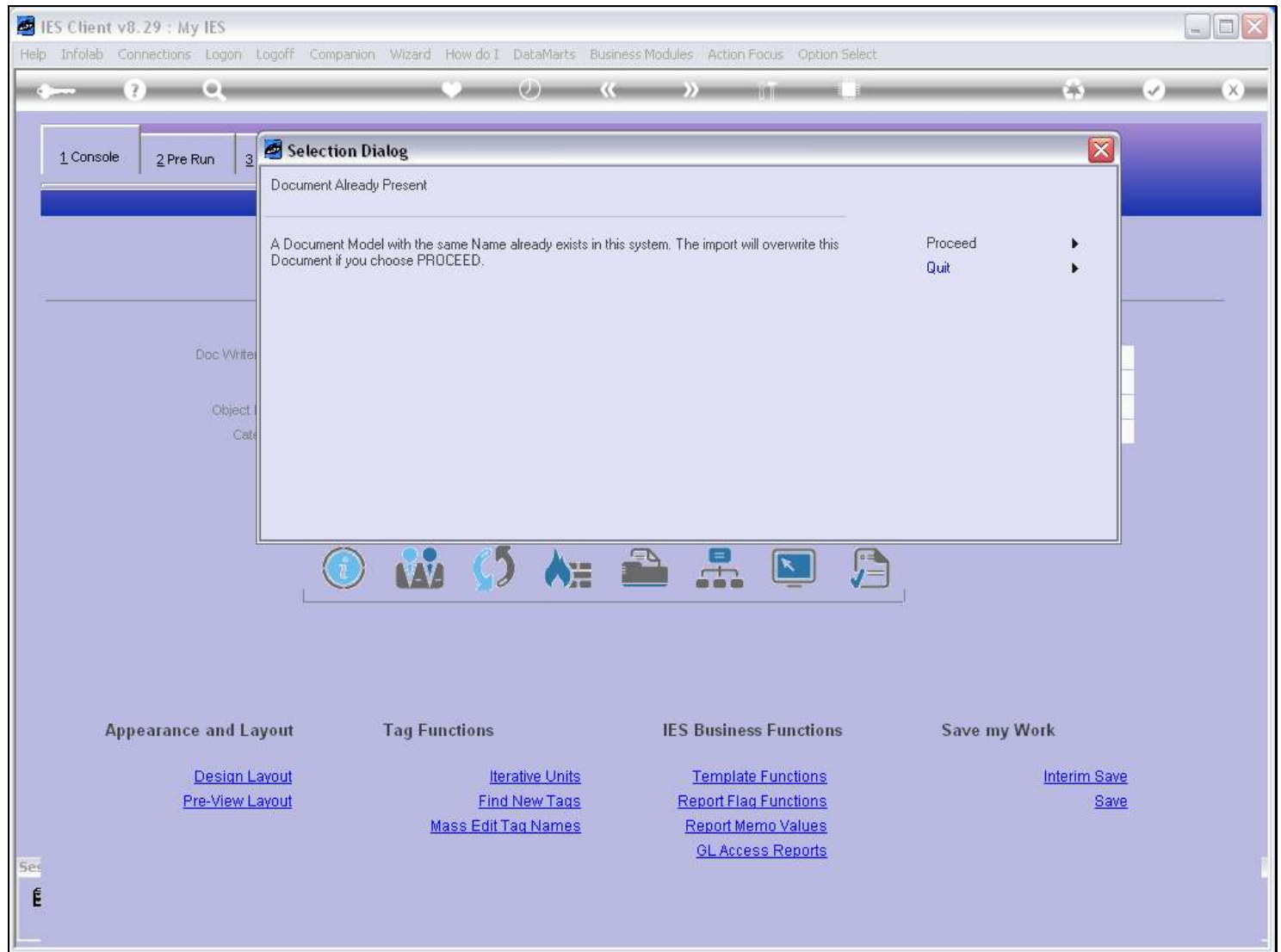
**Slide 6 - Slide 6****Slide notes**

The system will only offer suitable Files that are recognized on the BRIDGE folder.

Slide 7 - Slide 7



Slide notes

**Slide 8 - Slide 8****Slide notes**

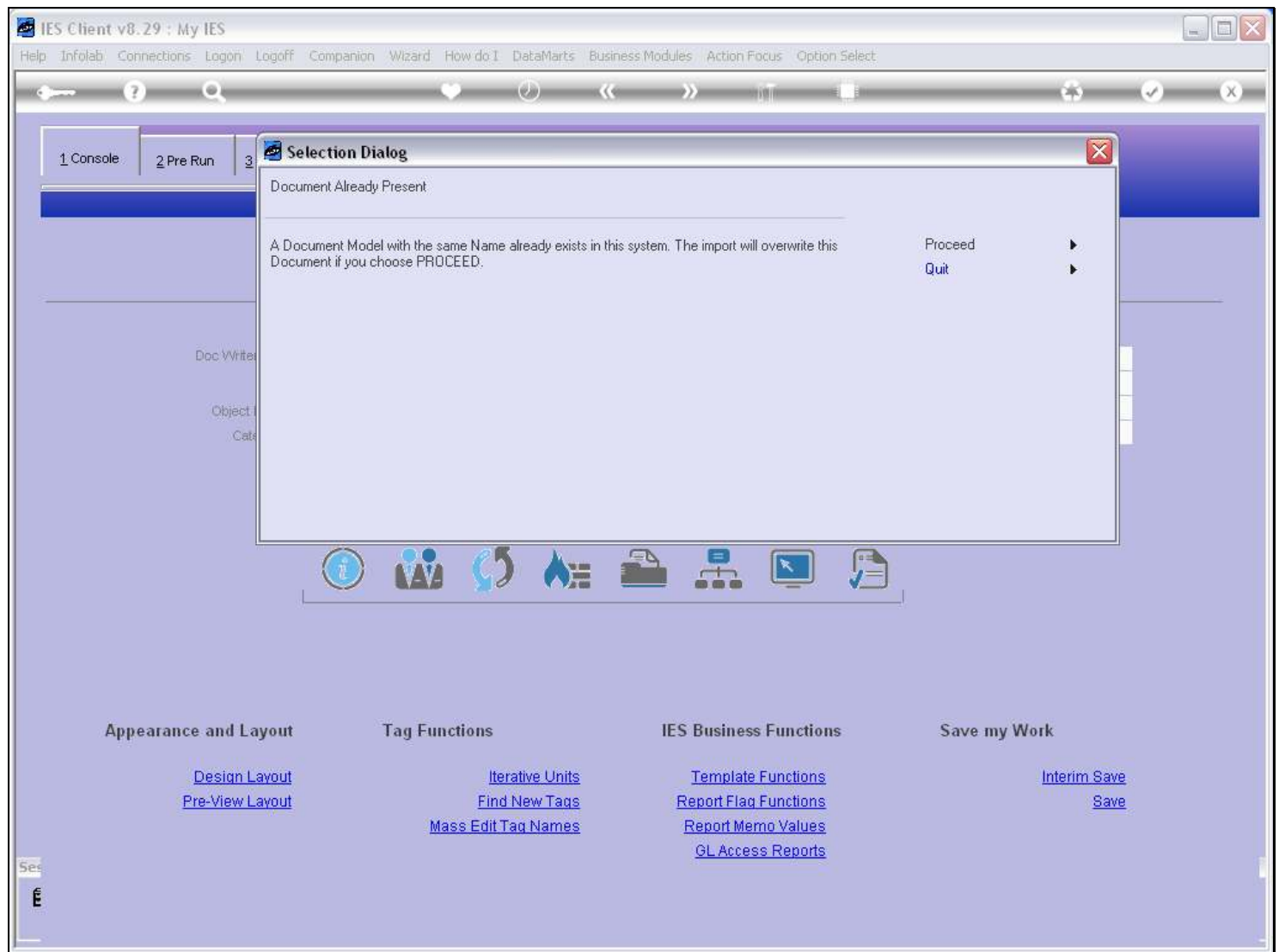
If a Report with the same Key already exists locally, then we are prompted and need to confirm whether the Import may overwrite the local version.



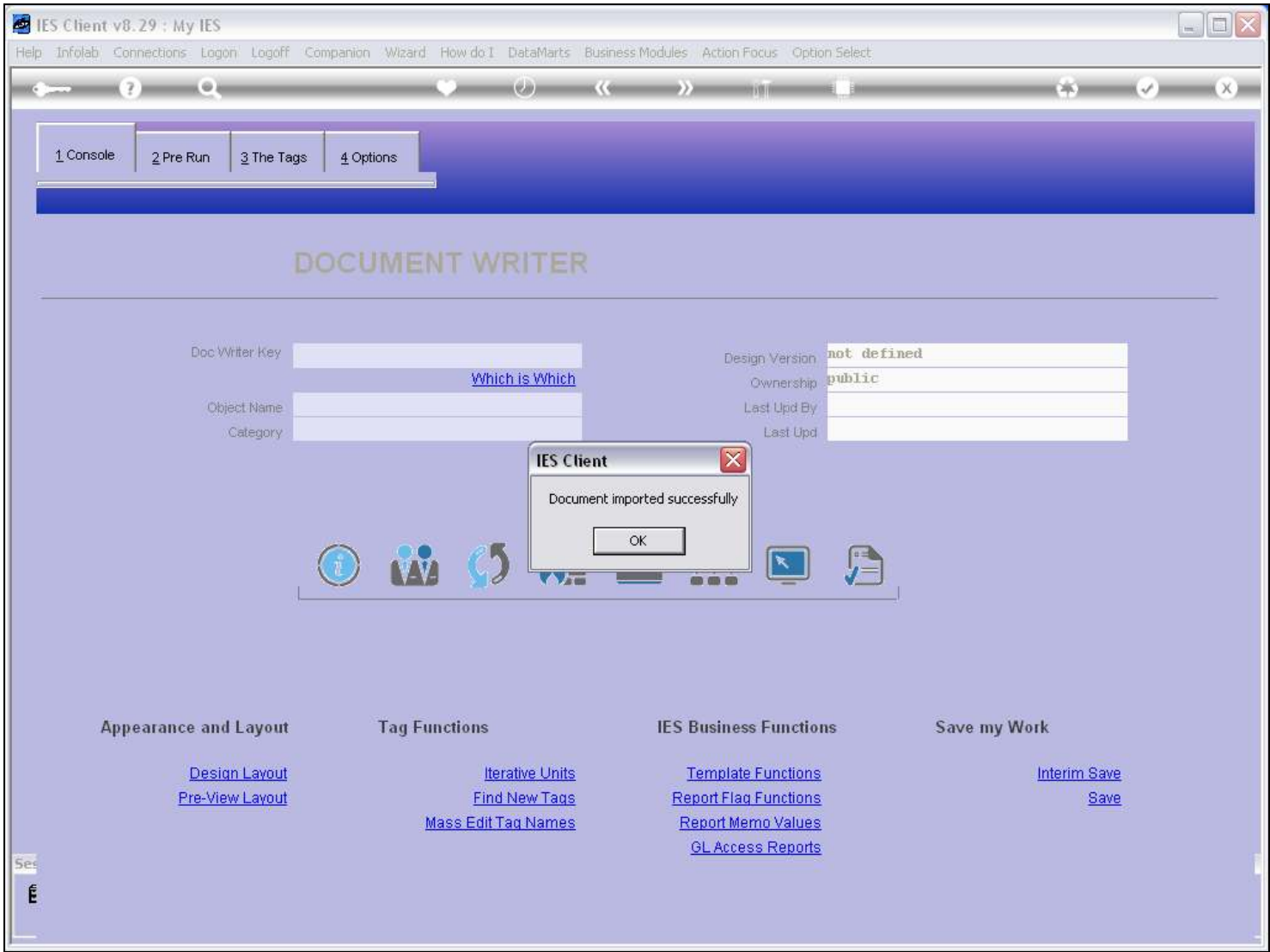
**Slide 9 - Slide 9**



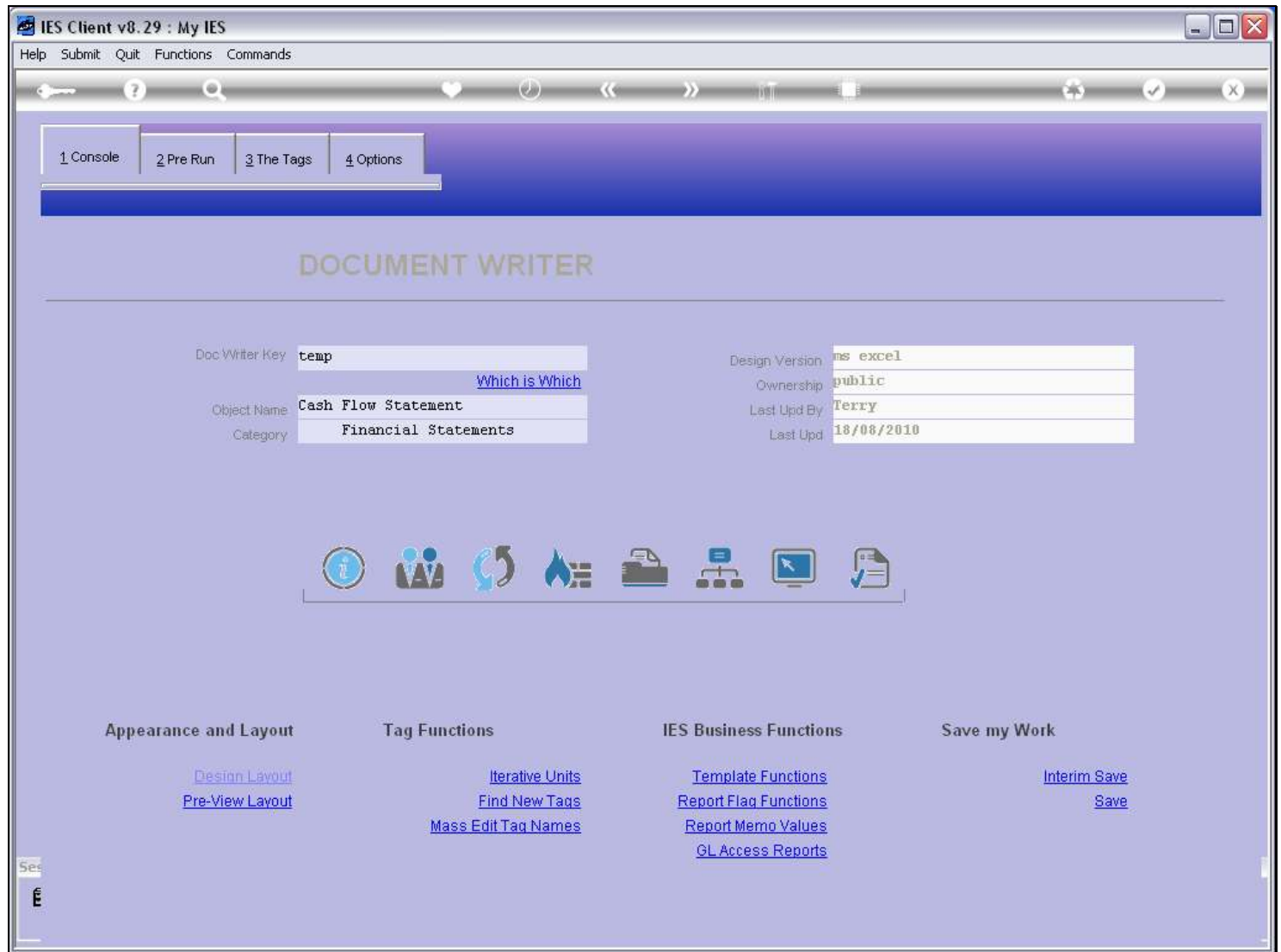
**Slide notes**

**Slide 10 - Slide 10****Slide notes**

Slide 11 - Slide 11

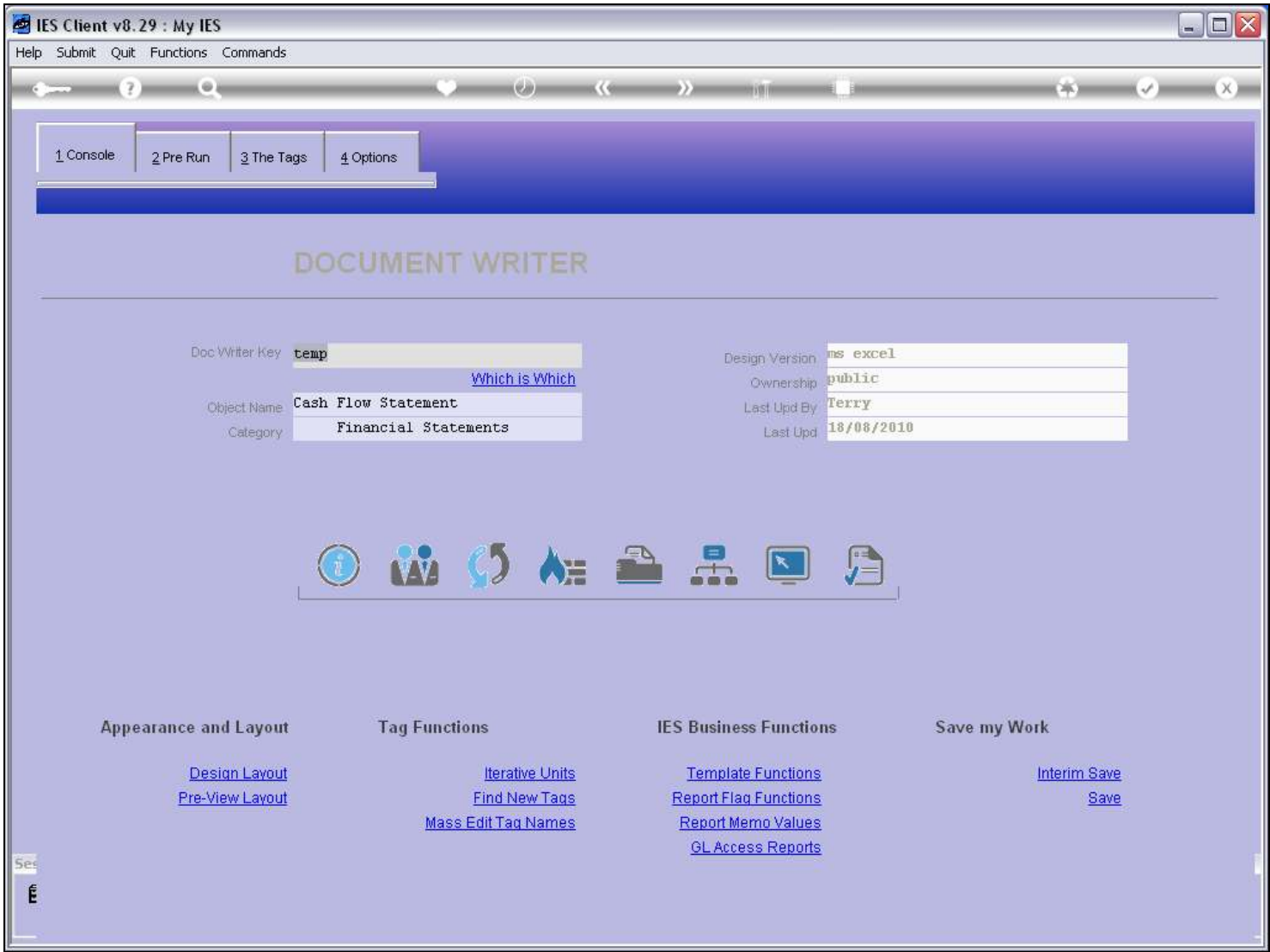


Slide notes

**Slide 12 - Slide 12****Slide notes**

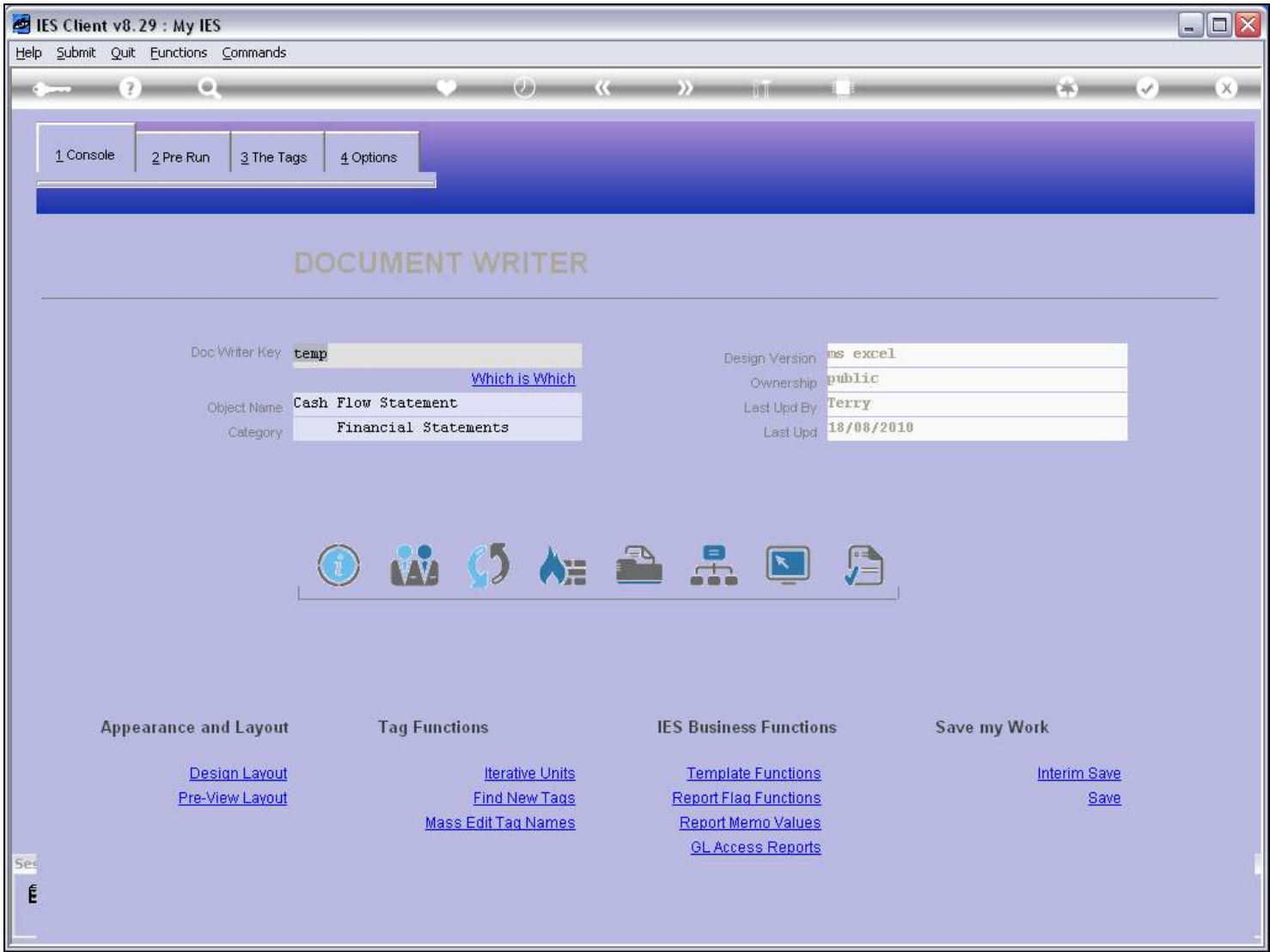
The newly imported Report is placed on the DocWriter console, or if not, can be retrieved from the lookup.

Slide 13 - Slide 13



Slide notes

Slide 14 - Slide 14



Slide notes