

Slide 1 - Slide 1

IES Client v8.29 : My IES

Help Submit Quit Functions Commands

DOCUMENT WRITER HTML UNIT

Doc Writer Unit Key: [Which is Which](#)

Unit Name:

Ownership:

Last Updated By:

Record Last Updated:

	>>> HTML Tags	Value Names	Exec Iteration
1	0001	Date	1
2	0002	Descr	1
3	0003	Doc	1
4	0004	Qty	1
5	0005	Amount	1
6	0006	Tax	1

[Save](#)

[Load New Tag](#)

[Re-Select Tag Order](#)

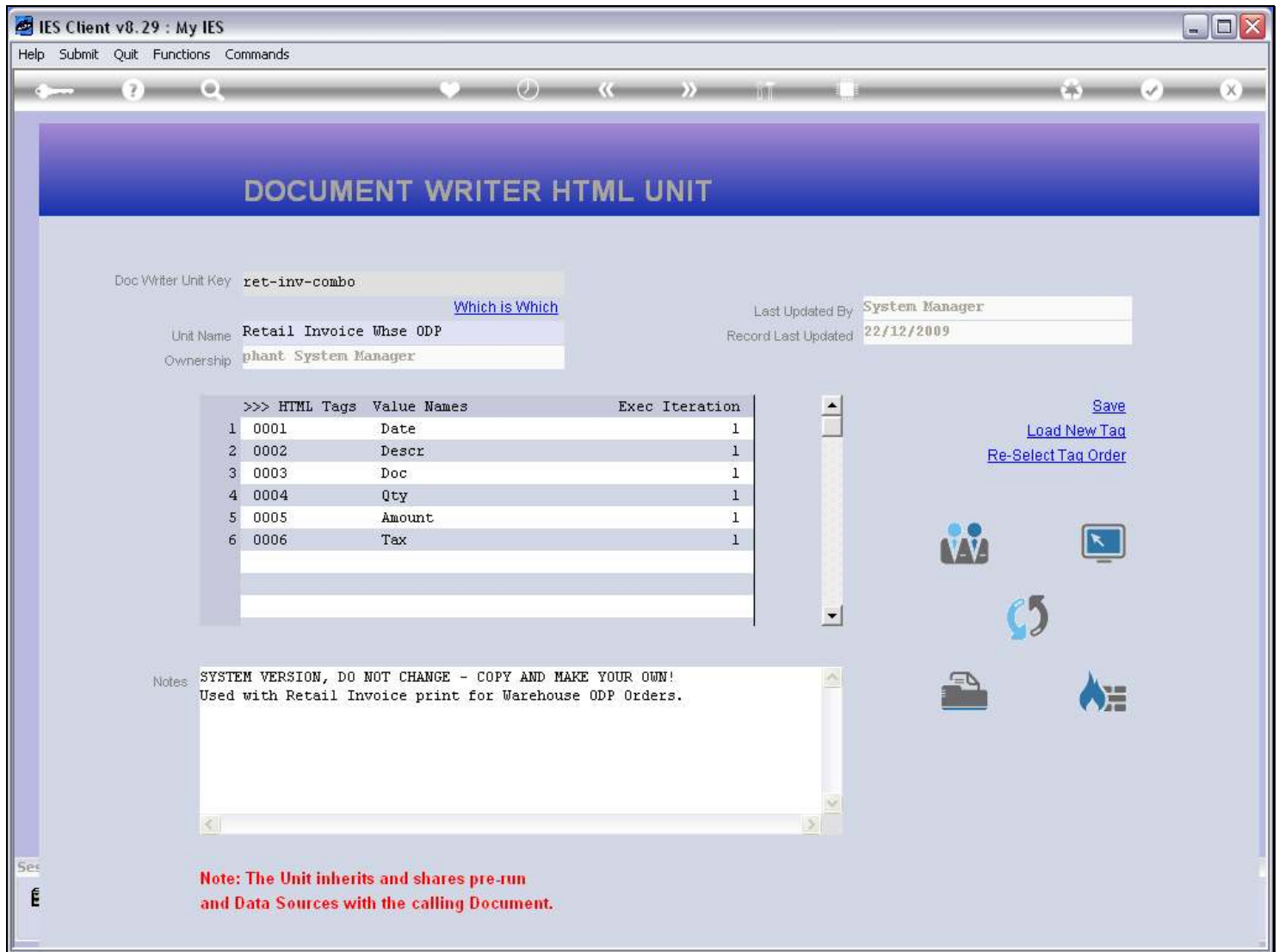
Notes: SYSTEM VERSION, DO NOT CHANGE - COPY AND MAKE YOUR OWN!
Used with Retail Invoice print for Warehouse ODP Orders.

Note: The Unit inherits and shares pre-run and Data Sources with the calling Document.

Slide notes

As is the case for DocWriter main reports, so also with the Units it is important in the choice of a Key for a new object that we choose a Key that is both unique and also unlikely to appear in a future IES release.

Slide 2 - Slide 2



Slide notes

The Unit Name we choose is important inasmuch as it helps to identify the Unit on lookups and also on the 'which is which' Report.

Slide 3 - Slide 3

IES Client v8.29 : My IES

Help Submit Quit Functions Commands

DOCUMENT WRITER HTML UNIT

Doc Writer Unit Keyret-inv-combo

Unit NameRetail Invoice Whse ODP

Ownershipphant System Manager

Which is Which

Last Updated BySystem Manager

Record Last Updated22/12/2009

>>> HTML Tags	Value Names	Exec Iteration
1 0001	Date	1
2 0002	Descr	1
3 0003	Doc	1
4 0004	Qty	1
5 0005	Amount	1
6 0006	Tax	1

Save

Load New Tag

Re-Select Tag Order

Notes

SYSTEM VERSION, DO NOT CHANGE - COPY AND MAKE YOUR OWN!
Used with Retail Invoice print for Warehouse ODP Orders.

Note: The Unit inherits and shares pre-run
and Data Sources with the calling Document.

Slide notes