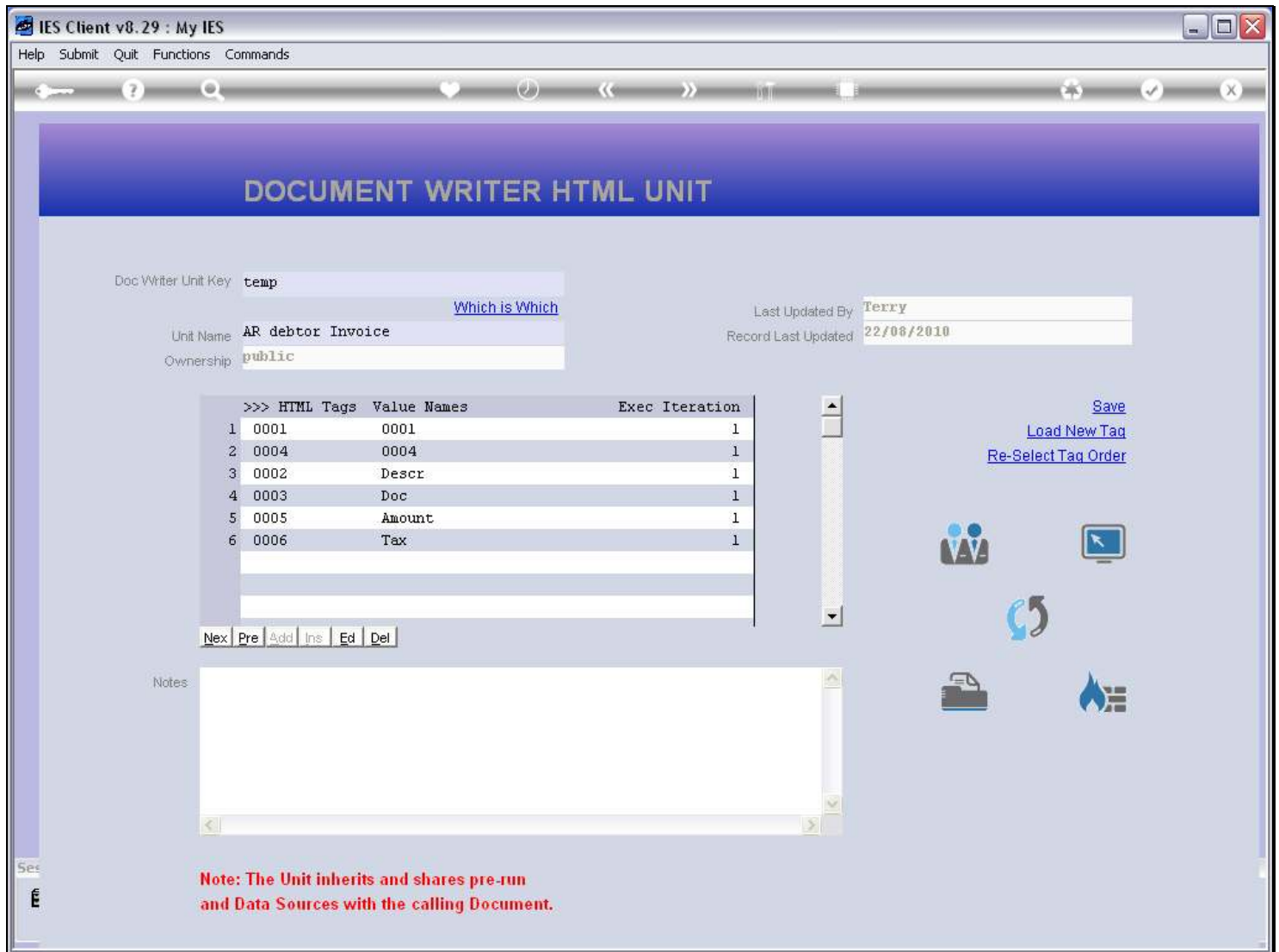


**Slide 1 - Slide 1****Slide notes**

This is a temporary Unit, and we are now going to delete it.

Slide 2 - Slide 2

IES Client v8.29 : My IES

Help Submit Quit Functions Commands

DOCUMENT WRITER HTML UNIT

Doc Writer Unit Keytemp

Unit NameAR debtor Invoice

Ownershippublic

Which is Which

Last Updated ByTerry

Record Last Updated22/08/2010

>>> HTML Tags	Value Names	Exec Iteration
1 0001	0001	1
2 0004	0004	1
3 0002	Descr	1
4 0003	Doc	1
5 0005	Amount	1
6 0006	Tax	1

Save

Load New Tag

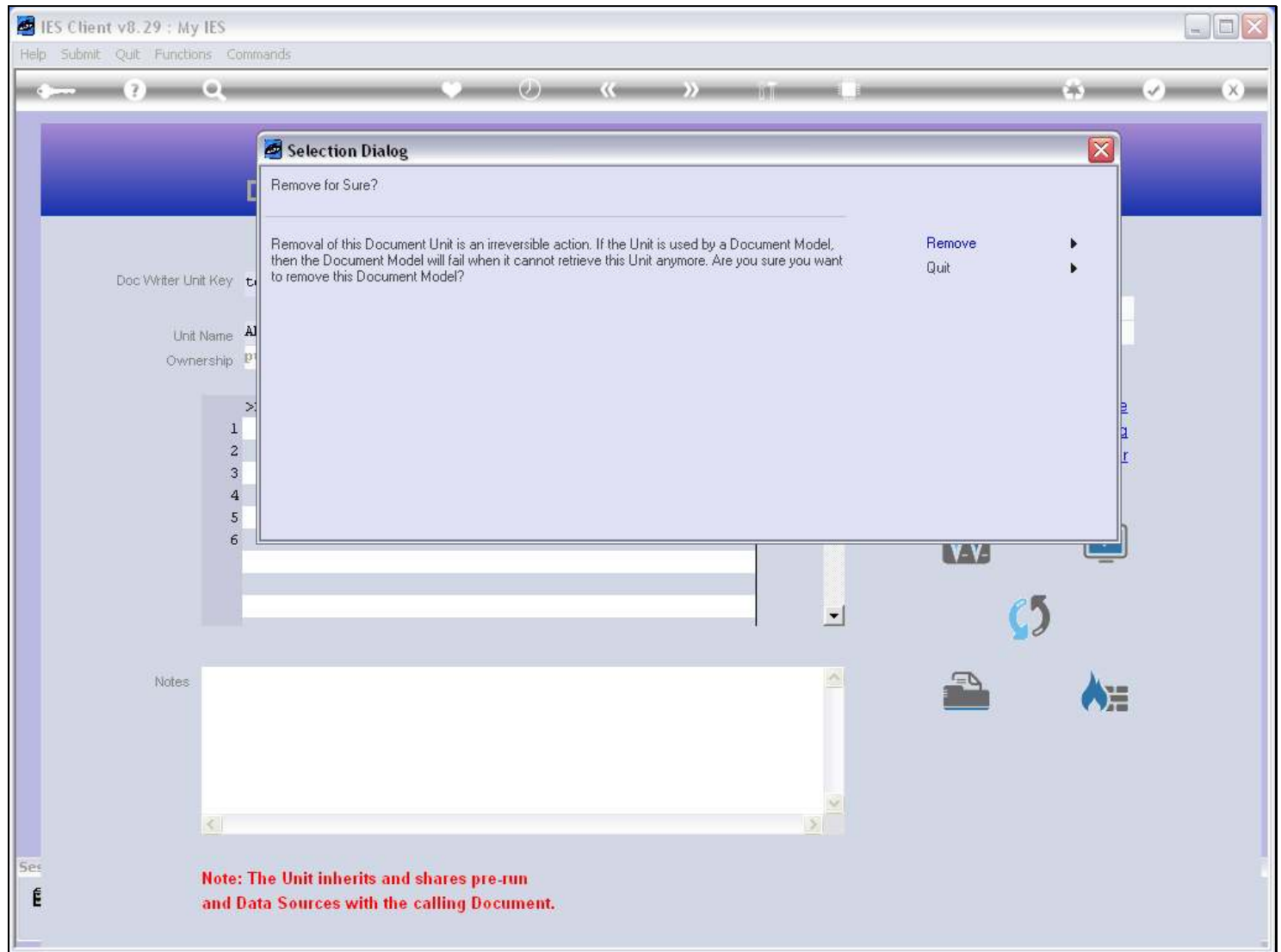
Re-Select Tag Order

Notes

Note: The Unit inherits and shares pre-run and Data Sources with the calling Document.

Slide notes

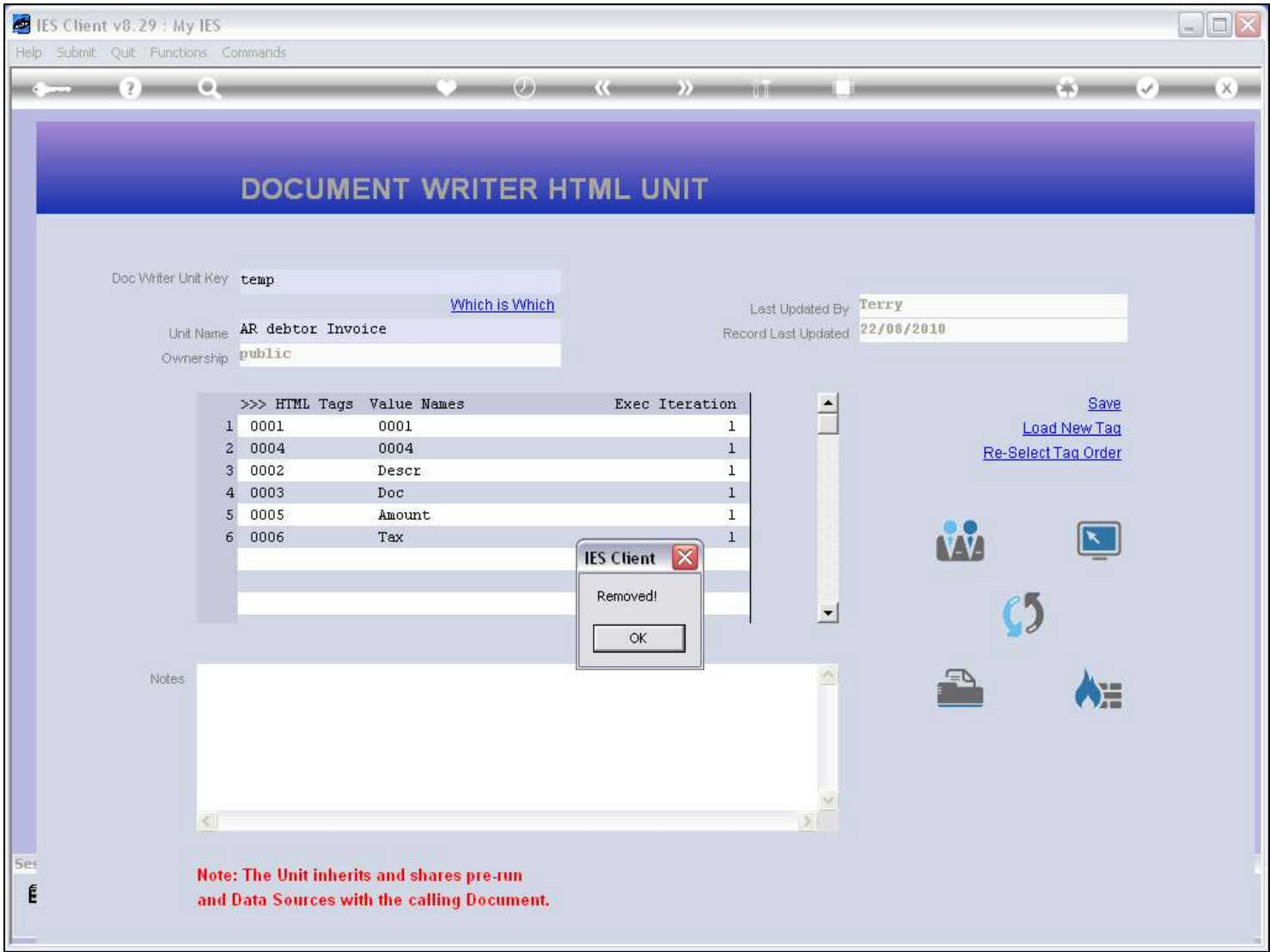
## Slide 3 - Slide 3



### Slide notes

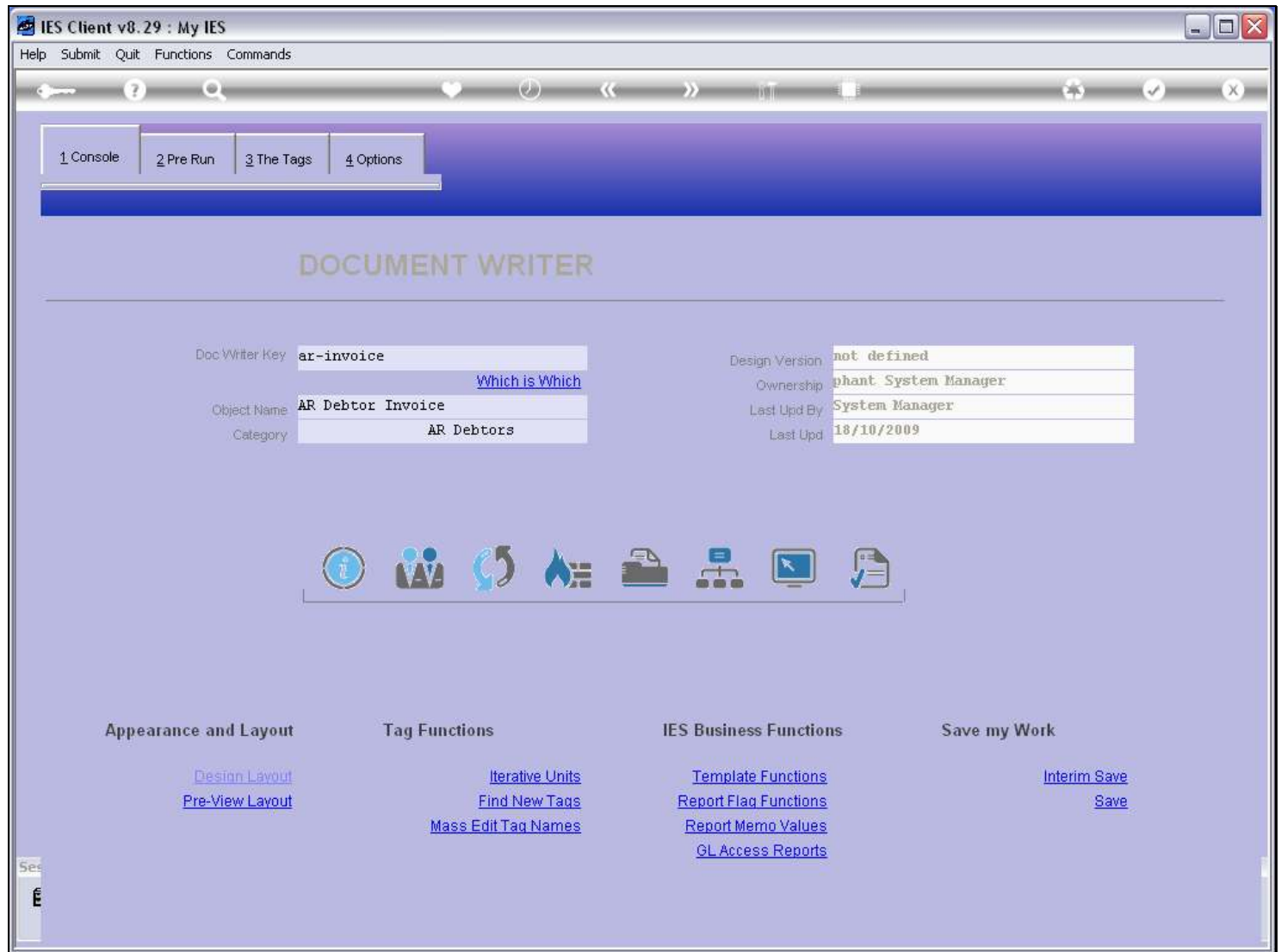
When we want to delete a Unit, the system will check whether the current ownership allows, but the system does not check whether any Report is using this Unit.

Slide 4 - Slide 4



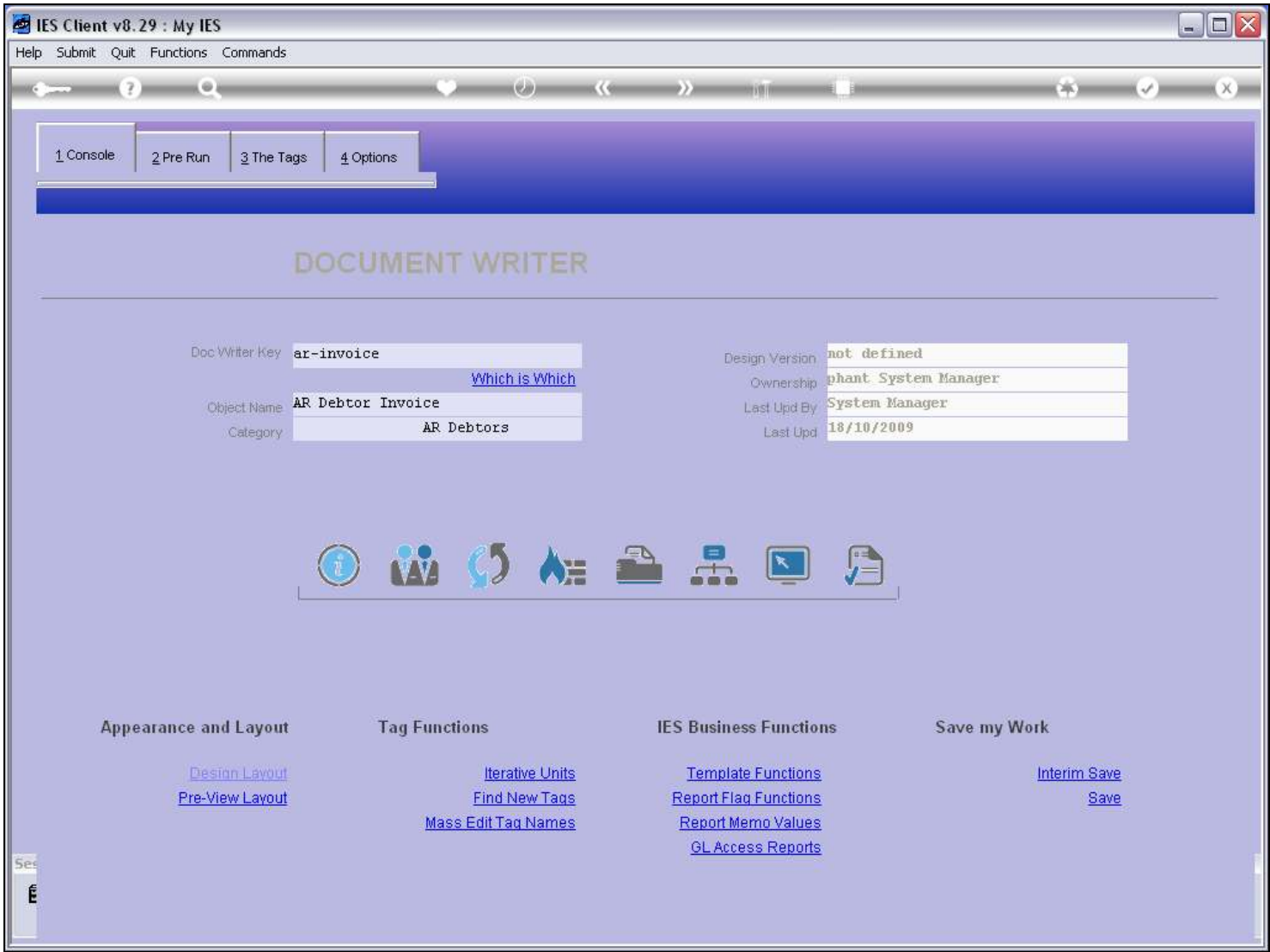
Slide notes

## Slide 5 - Slide 5



## Slide notes

Slide 6 - Slide 6



Slide notes