

Slide 1 - Slide 1

The screenshot shows a web browser window with the following elements:

- Address Bar:** Displays the URL `\\127.0.0.1\Bridge\DI557670093.htm`.
- Page Title:** **Purchase Order Invoice Processing, Range Report.**
- Text:**
 - Select Invoices from Jul 2010 (p 114) to Jul 2010 (p 114) .
 - Order Number Pattern is: []
- Table:**

Transaction Key	Invoice #	Quantity	Amount	Item Description	PO Number	Supplier
1554037533	B/R221	5.00	4,000.00	[inv] Olympus Camedia Mas	ABC.100718-2	C00001 Aanad & Withwal
1554037556	Q-R-L/1100	2.00	936.00	[inv] Nikon 70-300mm F4-5	ABC.100718-2	1000 World Specs
Total			4,936.00			
- Text:** ***

Slide notes

In this tutorial, we want to look at what a 'Unit Final Line' is, and how we use it. In this example, we see a Unit producing 2 output lines. Now, we ask, what if we want an underline at the bottom of the 2 Columns for Quantity and Amount? How would we do that?

Slide 2 - Slide 2

The screenshot shows a web browser window with the address bar displaying a local file path. The browser's menu bar includes File, Edit, View, Favorites, Tools, and Help. The toolbar contains various icons for search, share, and other functions. The main content area displays a report titled "Purchase Order Invoice Processing, Range Report." Below the title, there is a selection criteria line and an order number pattern. A table follows, listing transaction keys, invoice numbers, quantities, amounts, item descriptions, PO numbers, and suppliers. The table includes two data rows and a total row. The total amount is 4,936.00. The browser's status bar at the bottom shows the page, safety, and tools menus.

Purchase Order Invoice Processing, Range Report.

Select Invoices from Jul 2010 (p 114) to Jul 2010 (p 114) .
Order Number Pattern is: []

<u>Transaction Key</u>	<u>Invoice #</u>	<u>Quantity</u>	<u>Amount</u>	<u>Item Description</u>	<u>PO Number</u>	<u>Supplier</u>
1554037533	B/R221	5.00	4,000.00	[inv] Olympus Camedia Mas	ABC.100718-2	C00001 Aanad & Withwal
1554037556	Q-R-L/1100	2.00	936.00	[inv] Nikon 70-300mm F4-5	ABC.100718-2	1000 World Specs
		Total	4,936.00			

Slide notes

Slide 3 - Slide 3

Purchase Order Invoice Processing, Range Report.

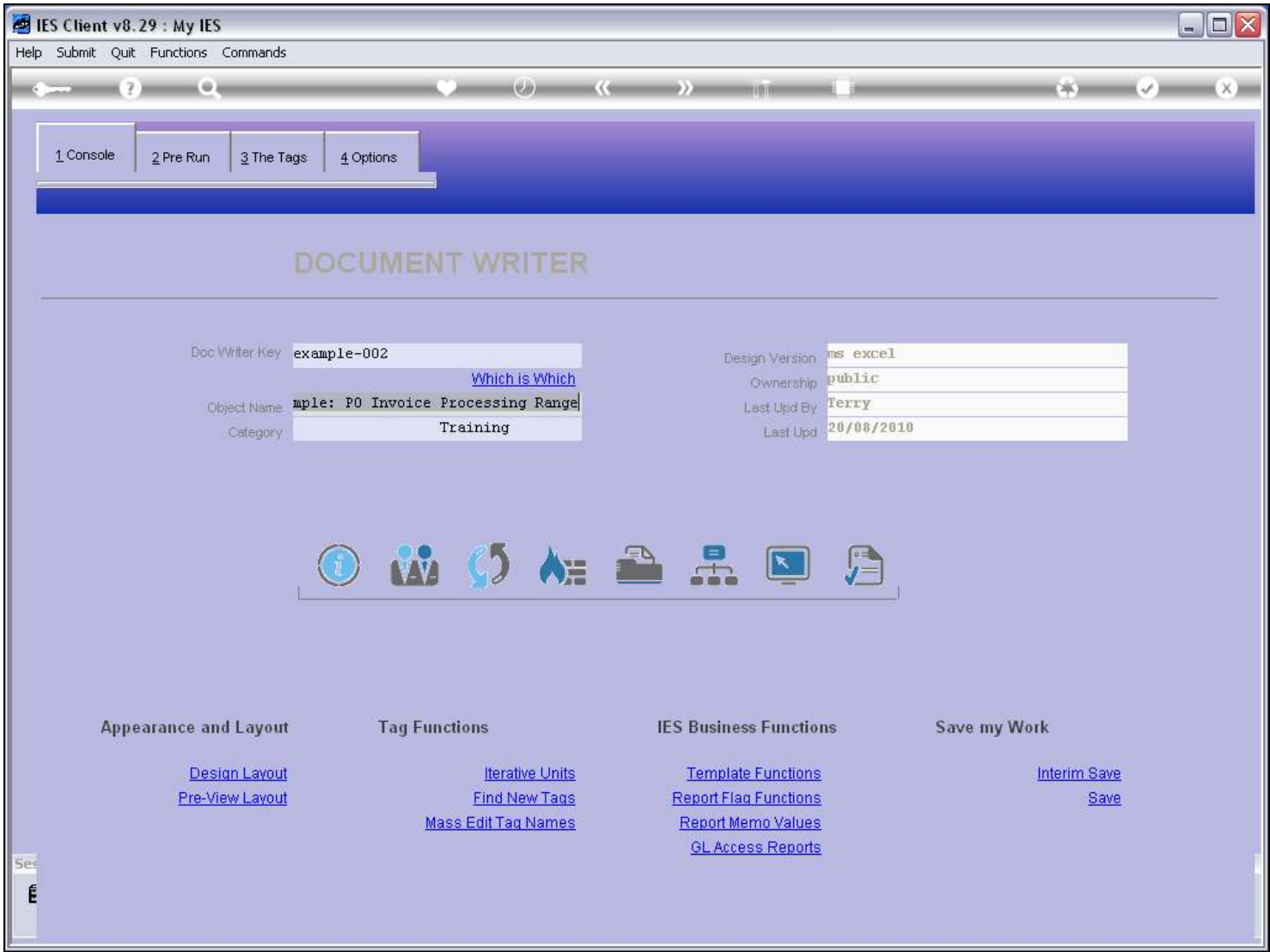
Select Invoices from Jul 2010 (p 114) to Jul 2010 (p 114) .
Order Number Pattern is: []

Transaction Key	Invoice #	Quantity	Amount	Item Description	PO Number	Supplier
1554037533	B/R221	5.00	4,000.00 [inv]	Olympus Camedia Mas	ABC.100718-2	C00001 Aanad & Withwal
1554037556	Q-R-L/1100	2.00	936.00 [inv]	Nikon 70-300mm F4-5	ABC.100718-2	1000 World Specs
Total			4,936.00			

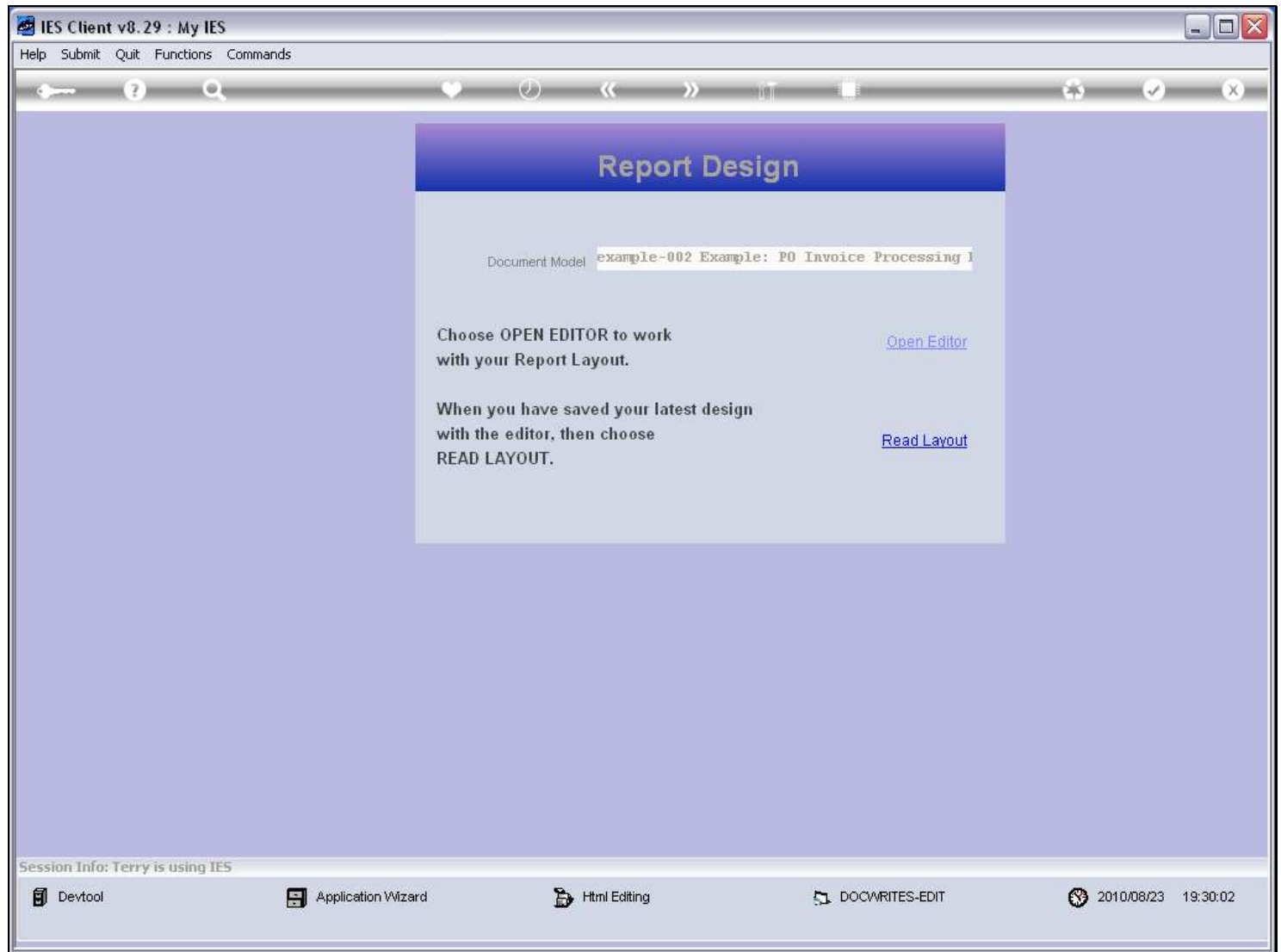
Slide notes

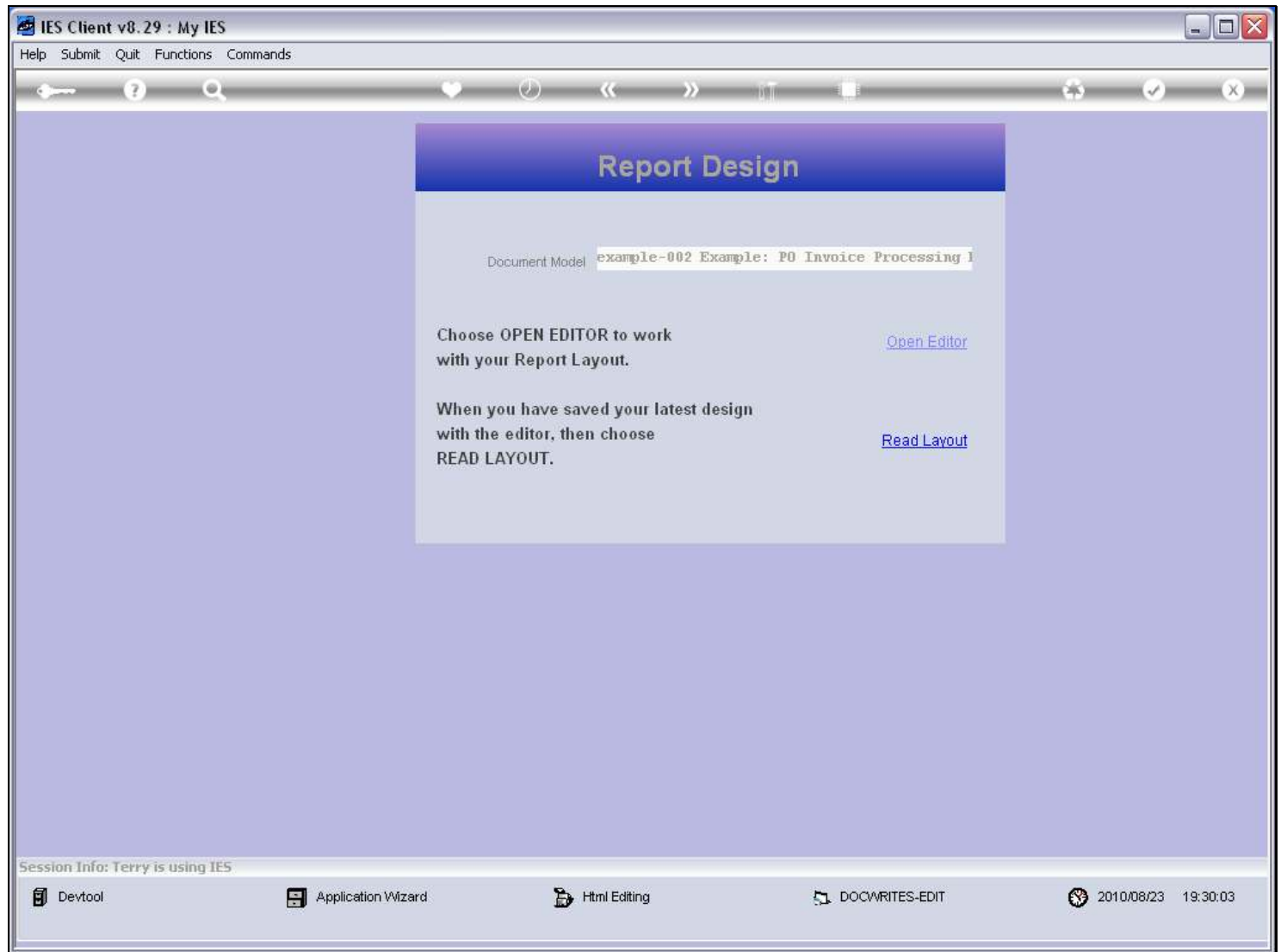
Because it is a Unit and a Unit is a repeat of Line behaviour, we cannot just use an underline at those Tags, because then it will be produced for all lines, and we only want it at the last, or final line.

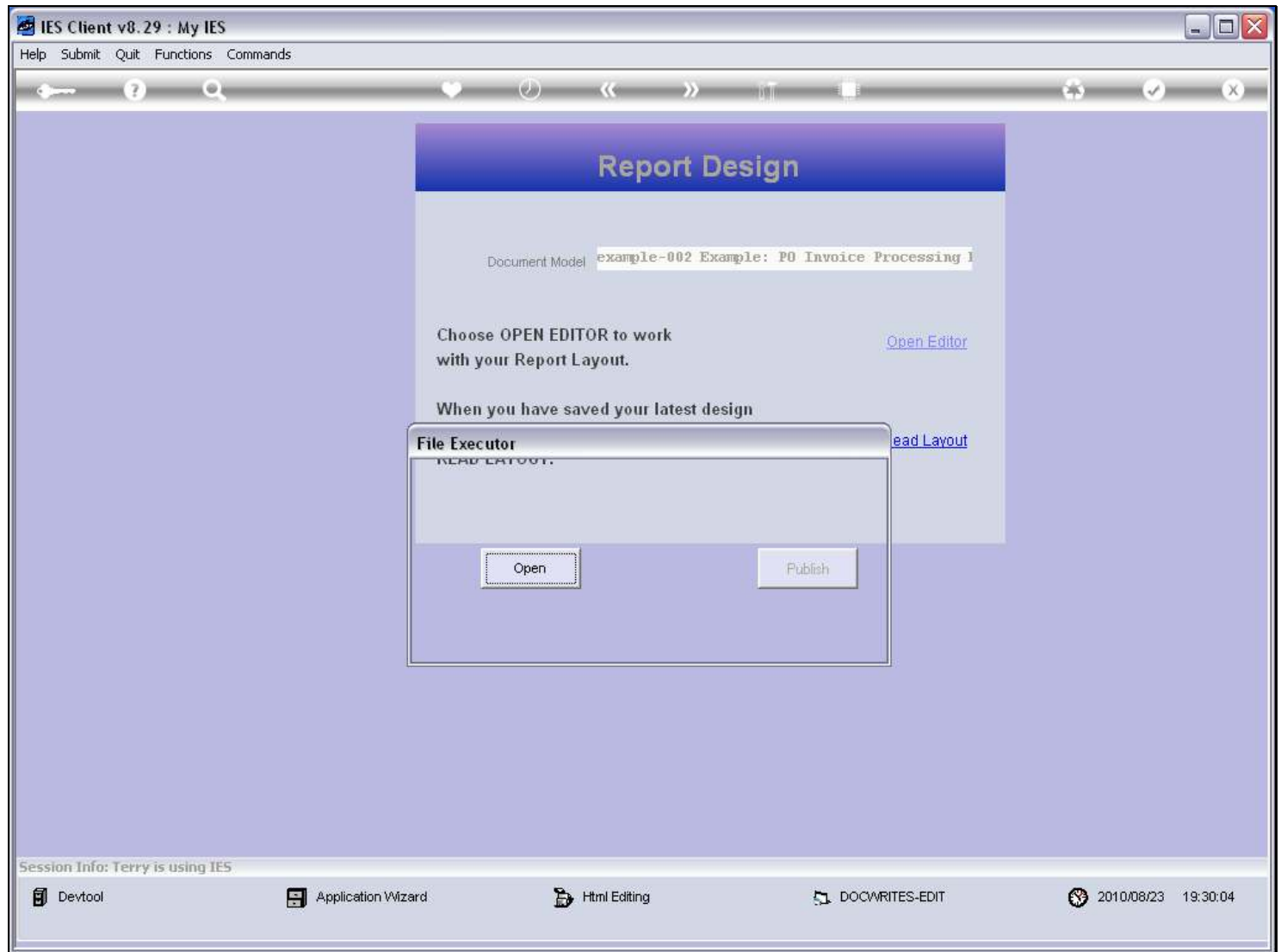
Slide 4 - Slide 4

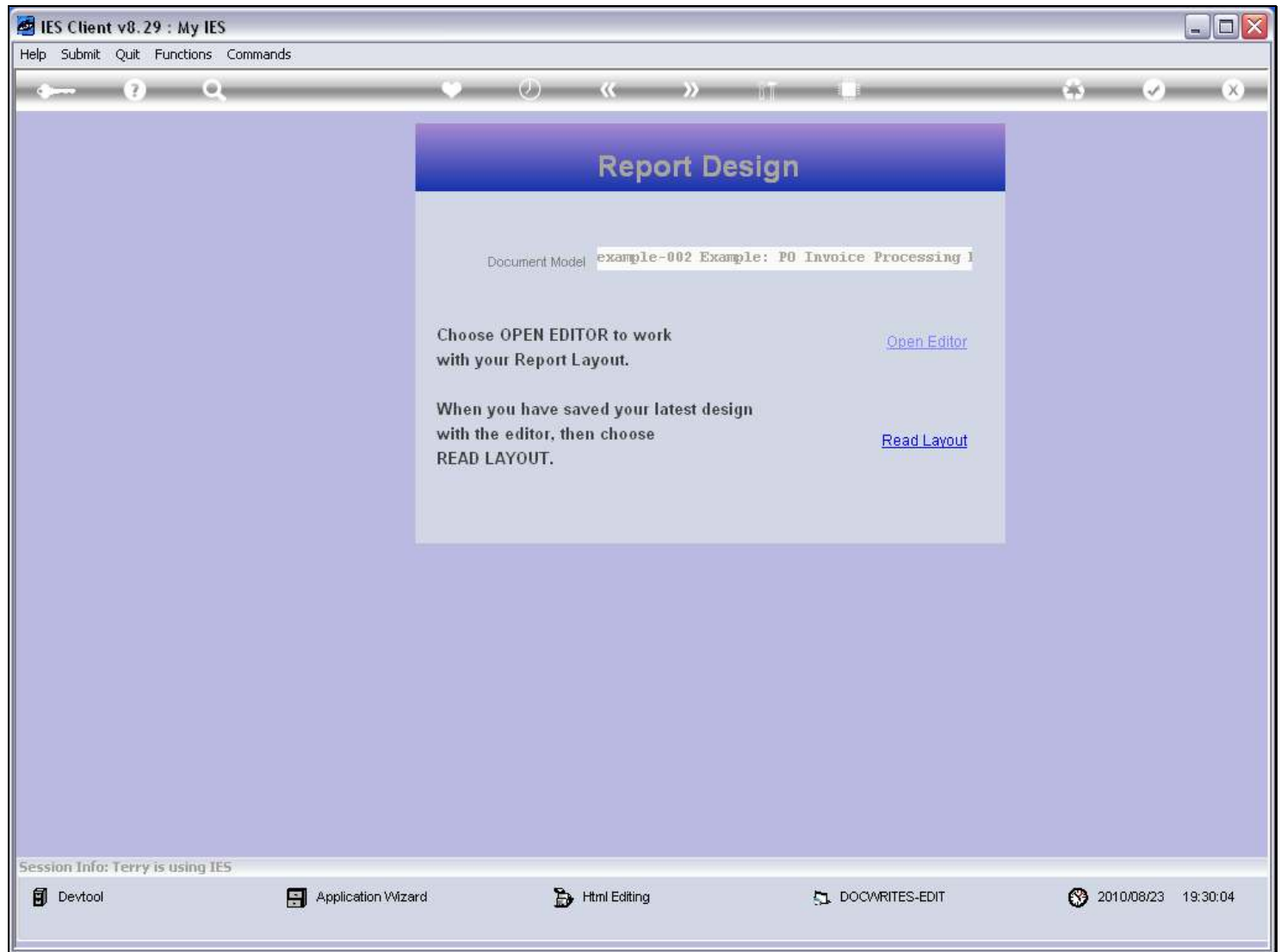


Slide notes

Slide 5 - Slide 5**Slide notes**

Slide 6 - Slide 6**Slide notes**

Slide 7 - Slide 7**Slide notes**

Slide 8 - Slide 8**Slide notes**

D:\1557670204.htm - Microsoft Excel

Home Insert Page Layout Formulas Data Review View Add-Ins

Cut Copy Format Painter Clipboard Font Alignment Number Styles Conditional Formatting as Table Cell Styles Insert Delete Cells

A1 fx

	A	B	C	D	E	F	G	H
1								
2								
3								
4								
5								
6								
7								
8								
9								
10								
11								
12								
13								
14								
15								
16								
17								
18								
19								
20								
21								
22								
23								
24								
25								
26								
27								
28								
29								
30								
31								
32								
33								
34								

Purchase Order Invoice Processing, Range Report.

Select Invoices from |0001| to |0002|. Order Number Pattern is: |0010|

Transaction Key	Invoice #	Quantity	Amount	Item Description	PO Number	Supplier
0003	0004	0005	0006	0007	0008	0009
Total				0011		

Page 9 of 52

D1557670204.htm - Microsoft Excel

Home Insert Page Layout Formulas Data Review View Add-Ins

Clipboard Font Alignment Number Styles Cells

D10 fx |0005|

	A	B	C	D	E	F	G	H
1								
2								
3	Purchase Order Invoice Processing, Range Report.							
4	Select Invoices from 0001 to 0002 .							
5	Order Number Pattern is: 0010							
6								
7	<u>Transaction Key</u>	<u>Invoice #</u>	<u>Quantity</u>	<u>Amount</u>	<u>Item Description</u>	<u>PO Number</u>	<u>Supplier</u>	
8	0003	0004	0005		0006 0007	0008	0009	
9				Total	0011			
10	***							
11								
12								
13								
14								
15								
16								
17								
18								
19								
20								
21								
22								
23								
24								
25								
26								
27								
28								
29								
30								
31								
32								
33								
34								

To demonstrate the challenge, we will now underline the Quantity and Amount Tags.

D:\1557670204.htm - Microsoft Excel

Home Insert Page Layout Formulas Data Review View Add-Ins

Cut Copy Format Painter Clipboard Font Alignment Number Styles Cells

A B C D E F G H

Purchase Order Invoice Processing, Range Report.

Select Invoices from |0001| to |0002|. Order Number Pattern is: |0010|

<u>Transaction Key</u>	<u>Invoice #</u>	<u>Quantity</u>	<u>Amount</u>	<u>Item Description</u>	<u>PO Number</u>	<u>Supplier</u>
0003	0004	0005		0006 0007	0008	0009
			Total	0011		

Page 11 of 52

D1557670204.htm - Microsoft Excel

	A	B	C	D	E	F	G	H
1								
2								
3	Purchase Order Invoice Processing, Range Report.							
4								
5	Select Invoices from 0001 to 0002 .							
6	Order Number Pattern is: 0010							
7								
8	<u>Transaction Key</u>	<u>Invoice #</u>	<u>Quantity</u>	<u>Amount</u>	<u>Item Description</u>	<u>PO Number</u>	<u>Supplier</u>	
9								
10	0003	0004	0005	0006	0007	0008	0009	
11								
12			Total	0011				
13	***							
14								
15								
16								
17								
18								
19								
20								
21								
22								
23								
24								
25								
26								
27								
28								
29								
30								
31								
32								
33								
34								

Page 12 of 52

D1557670204.htm - Microsoft Excel

	A	B	C	D	E	F	G	H	
1									
2									
3	Purchase Order Invoice Processing, Range Report.								
4									
5	Select Invoices from 0001 to 0002 .								
6	Order Number Pattern is: 0010								
7									
8	<u>Transaction Key</u>	<u>Invoice #</u>	<u>Quantity</u>	<u>Amount</u>	<u>Item Description</u>	<u>PO Number</u>	<u>Supplier</u>		
9									
10	0003	0004	0005	0006	0007	0008	0009		
11									
12			Total	0011					
13	***								
14									
15									
16									
17									
18									
19									
20									
21									
22									
23									
24									
25									
26									
27									
28									
29									
30									
31									
32									
33									
34									

Page 13 of 52

D1557670204.htm - Microsoft Excel

Home Insert Page Layout Formulas Data Review View Add-Ins

Paste Cut Copy Format Painter Clipboard Font Alignment Number Styles Cells

A B C D E F G H

1
2
3
4
5
6
7
8
9
10
11
12
13
14
15
16
17
18
19
20
21
22
23
24
25
26
27
28
29
30
31
32
33
34

Purchase Order Invoice Processing, Range Report.

Select Invoices from [0001] to [0002].
Order Number Pattern is: [0010]

Transaction Key	Invoice #	Quantity	Amount	Item Description	PO Number	Supplier
[0003]						

Microsoft Office Excel

D1557670204.htm may contain features that are not compatible with Web Page. Do you want to keep the workbook in this format?

- To keep this format, which leaves out any incompatible features, click Yes.
- To preserve the features, click No. Then save a copy in the latest Excel format.
- To see what might be lost, click Help.

Yes No Help

Page 14 of 52

D1557670204.htm - Microsoft Excel

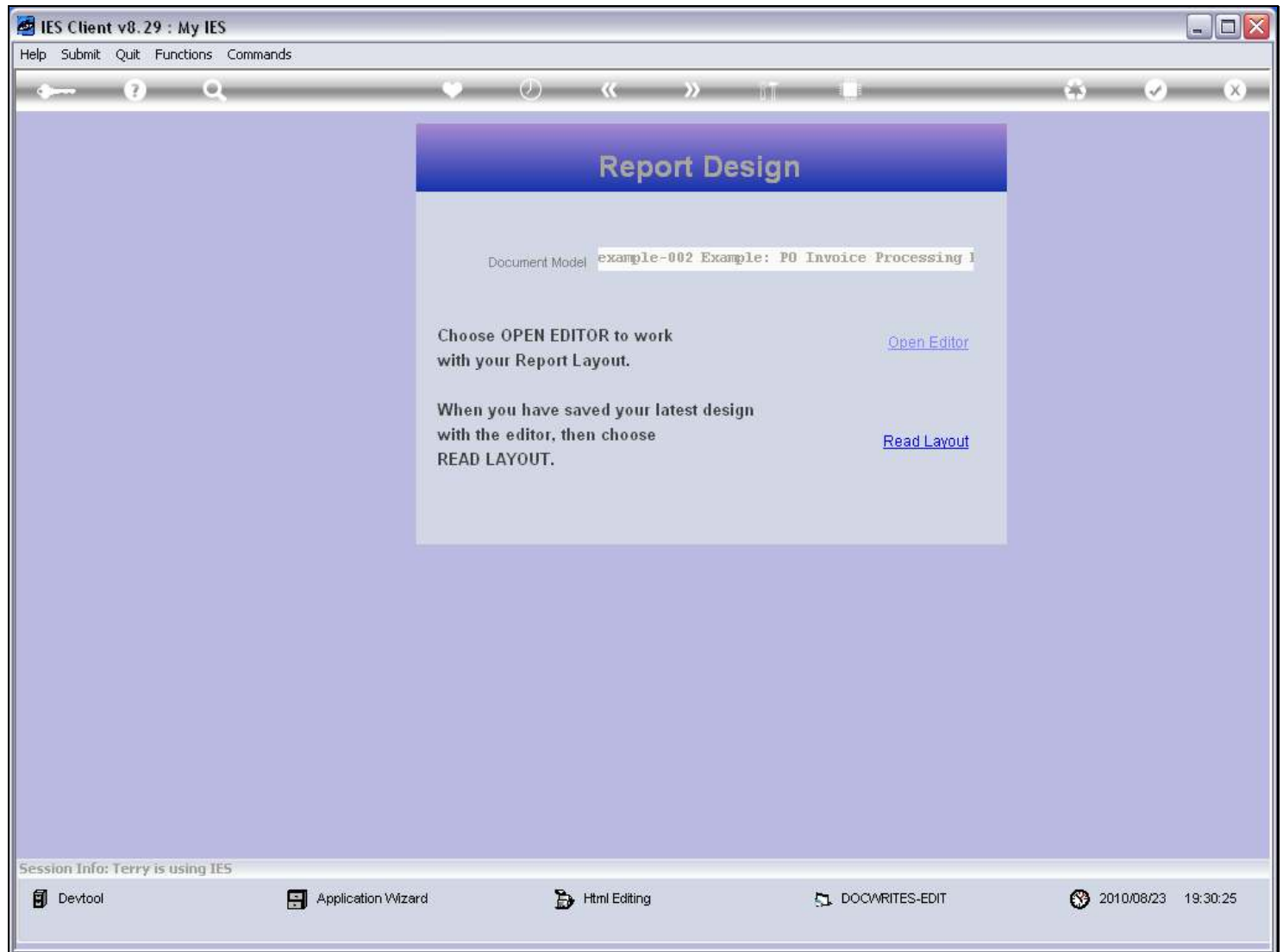
Home Insert Page Layout Formulas Data Review View Add-Ins

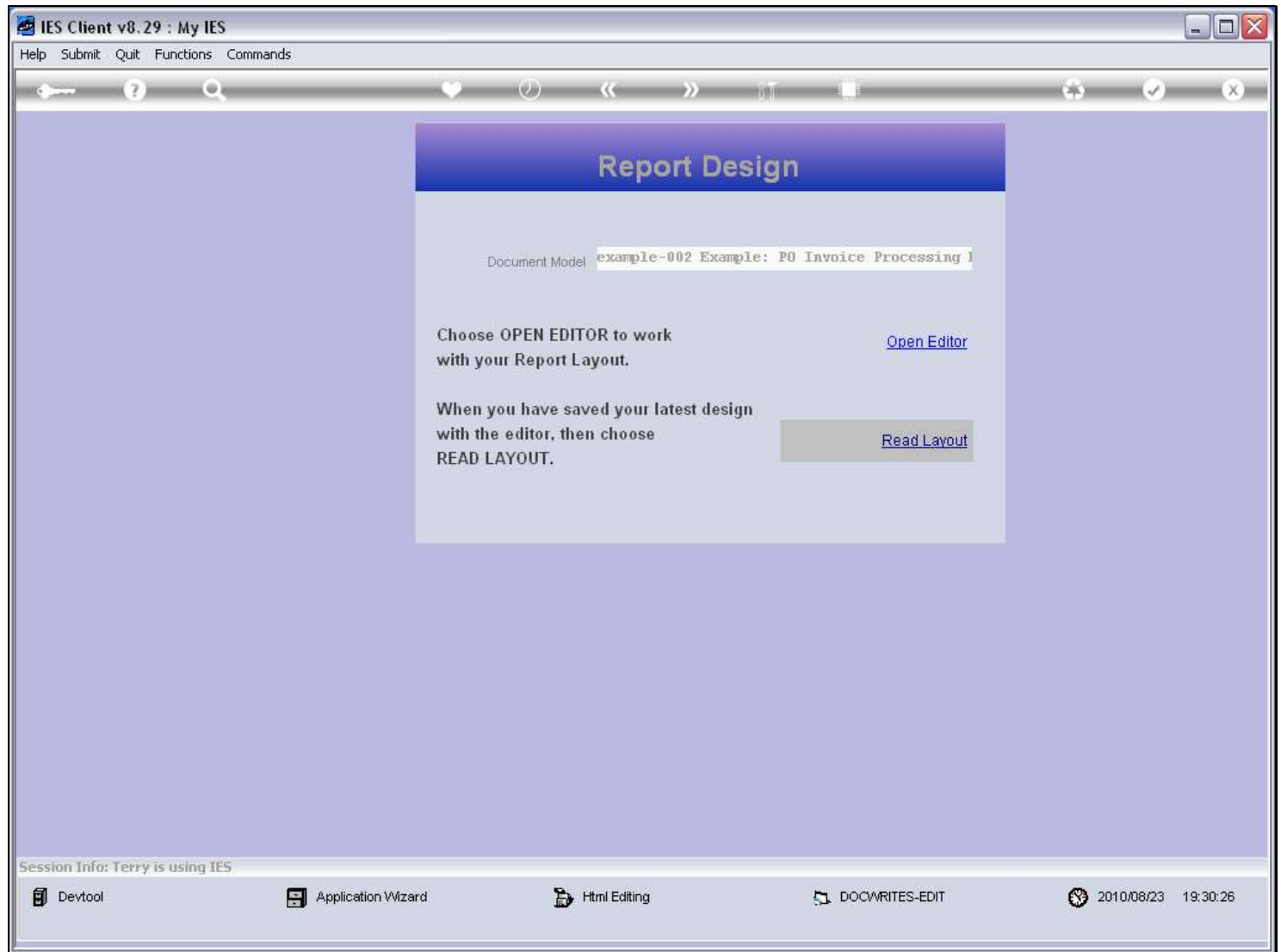
Clipboard Font Alignment Number Styles Cells

E10 |0006|

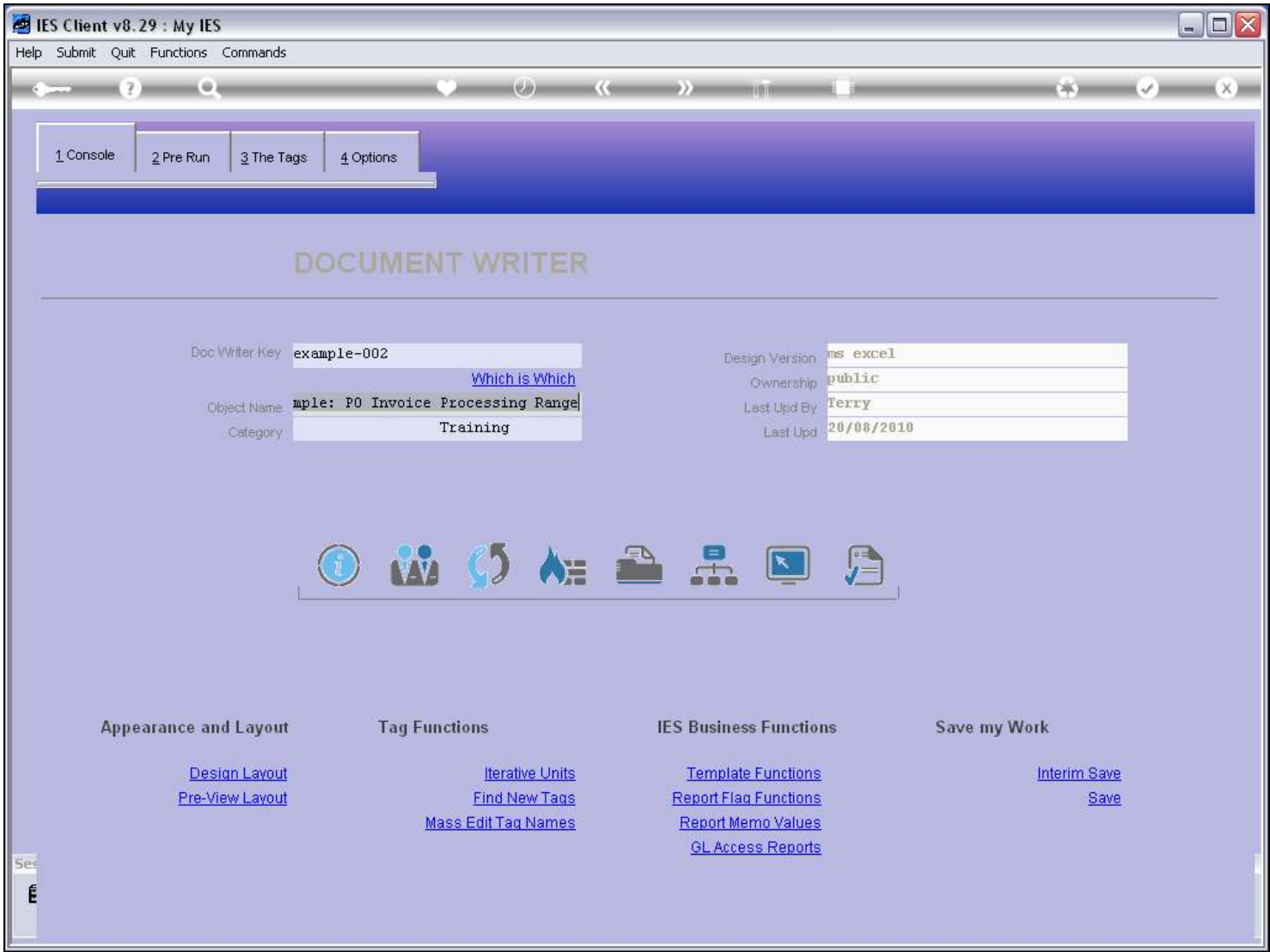
	A	B	C	D	E	F	G	H	
1									
2									
3	Purchase Order Invoice Processing, Range Report.								
4	Select Invoices from 0001 to 0002 .								
5	Order Number Pattern is: 0010								
6									
7									
8	<u>Transaction Key</u>	<u>Invoice #</u>	<u>Quantity</u>	<u>Amount</u>	<u>Item Description</u>	<u>PO Number</u>	<u>Supplier</u>		
9									
10	0003	0004	0005	0006	0007	0008	0009		
11									
12			Total	0011					
13	***								
14									
15									
16									
17									
18									
19									
20									
21									
22									
23									
24									
25									
26									
27									
28									
29									
30									
31									
32									
33									
34									

Page 15 of 52

Slide 16 - Slide 16**Slide notes**

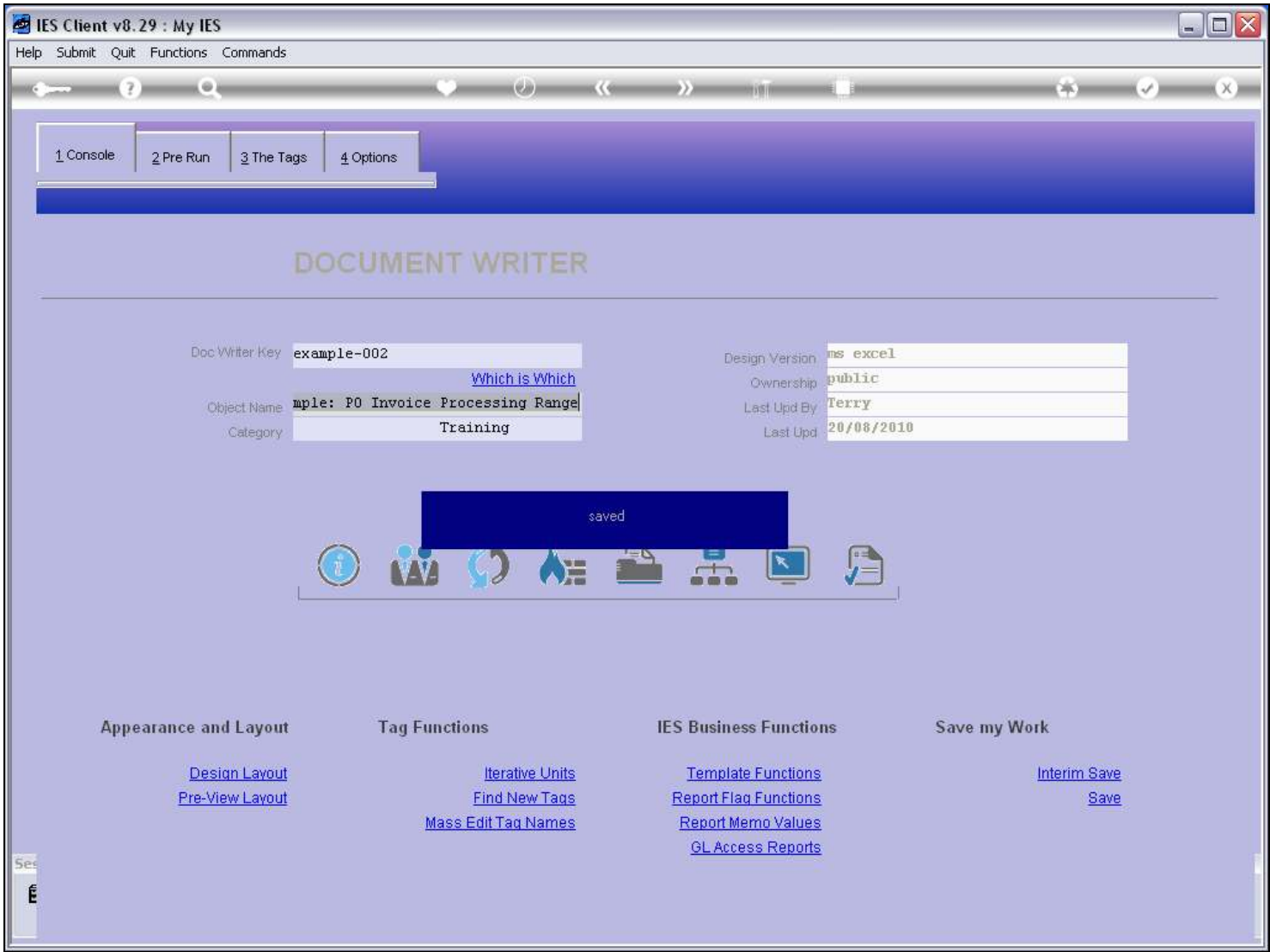
Slide 17 - Slide 17**Slide notes**

Slide 18 - Slide 18



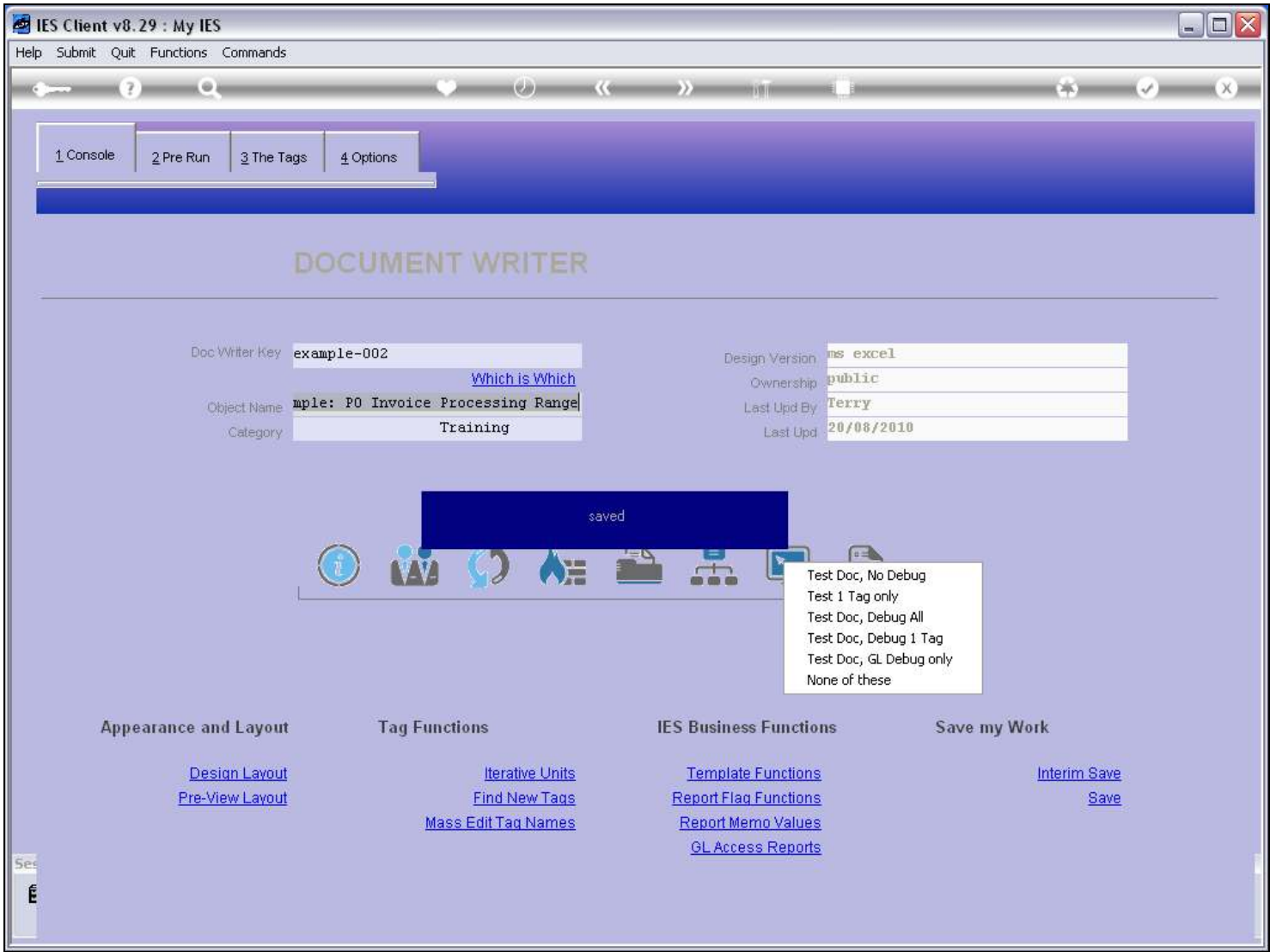
Slide notes

Slide 19 - Slide 19



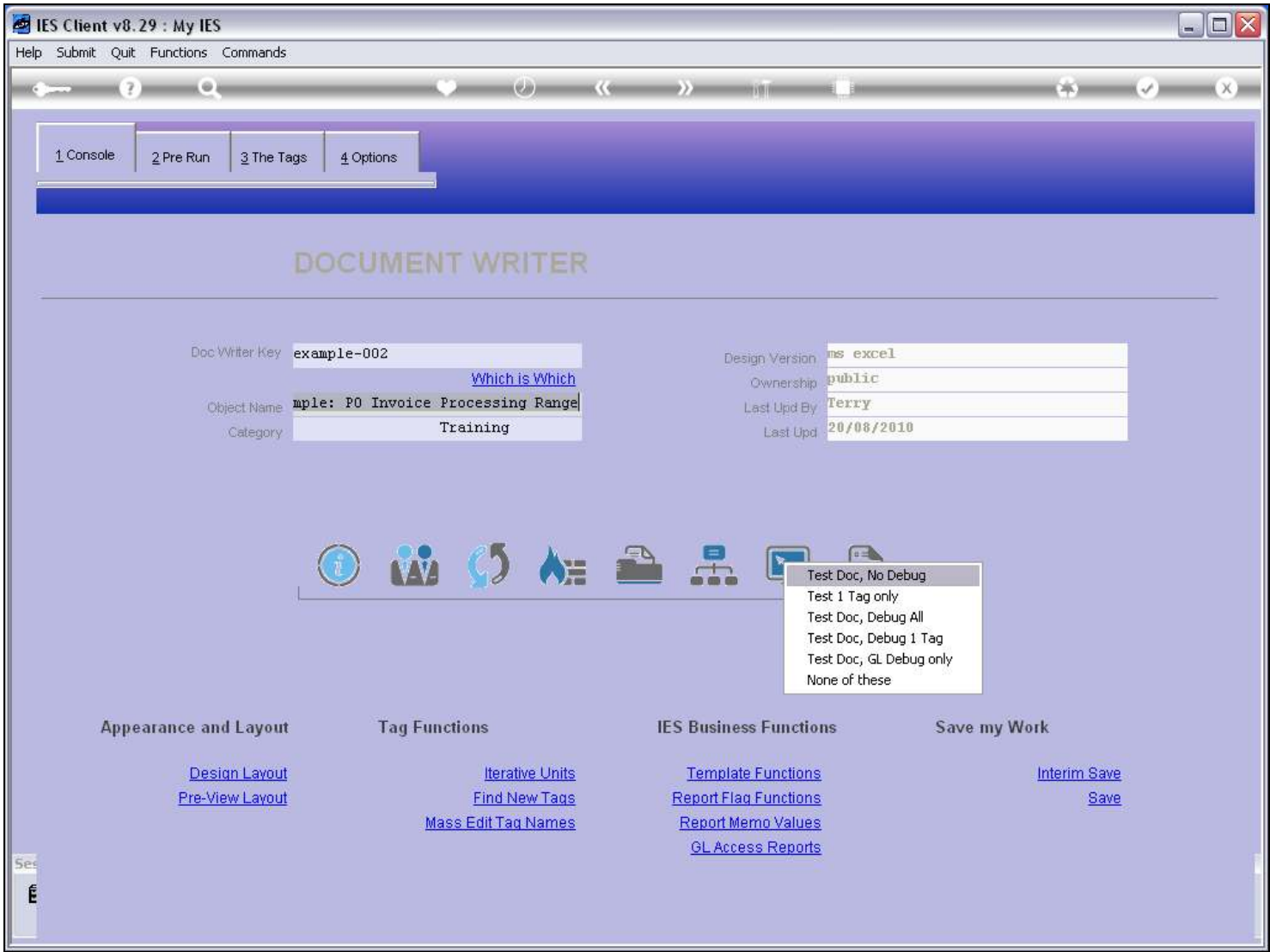
Slide notes

Slide 20 - Slide 20



Slide notes

Slide 21 - Slide 21

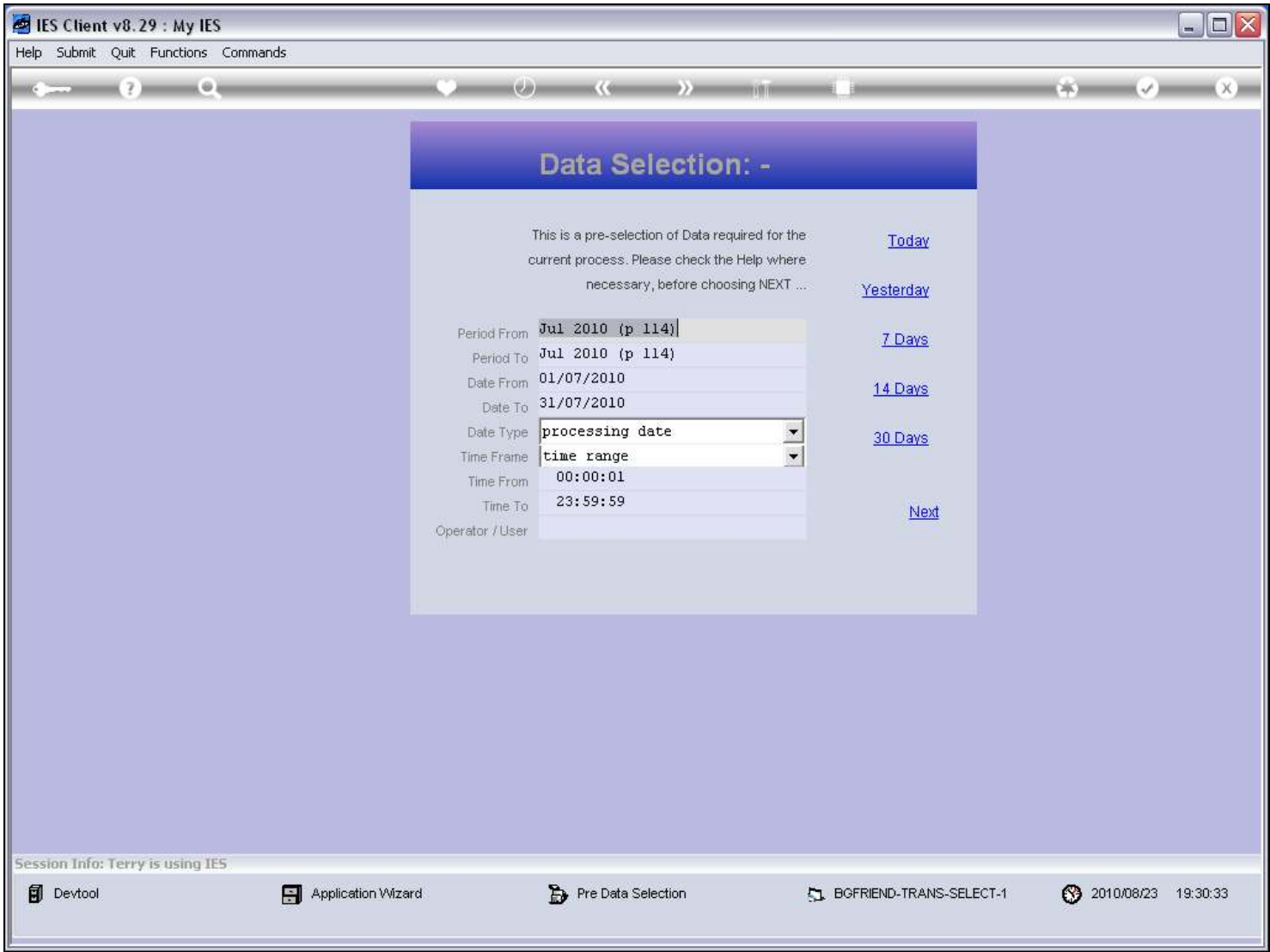


Slide notes

[illegible]

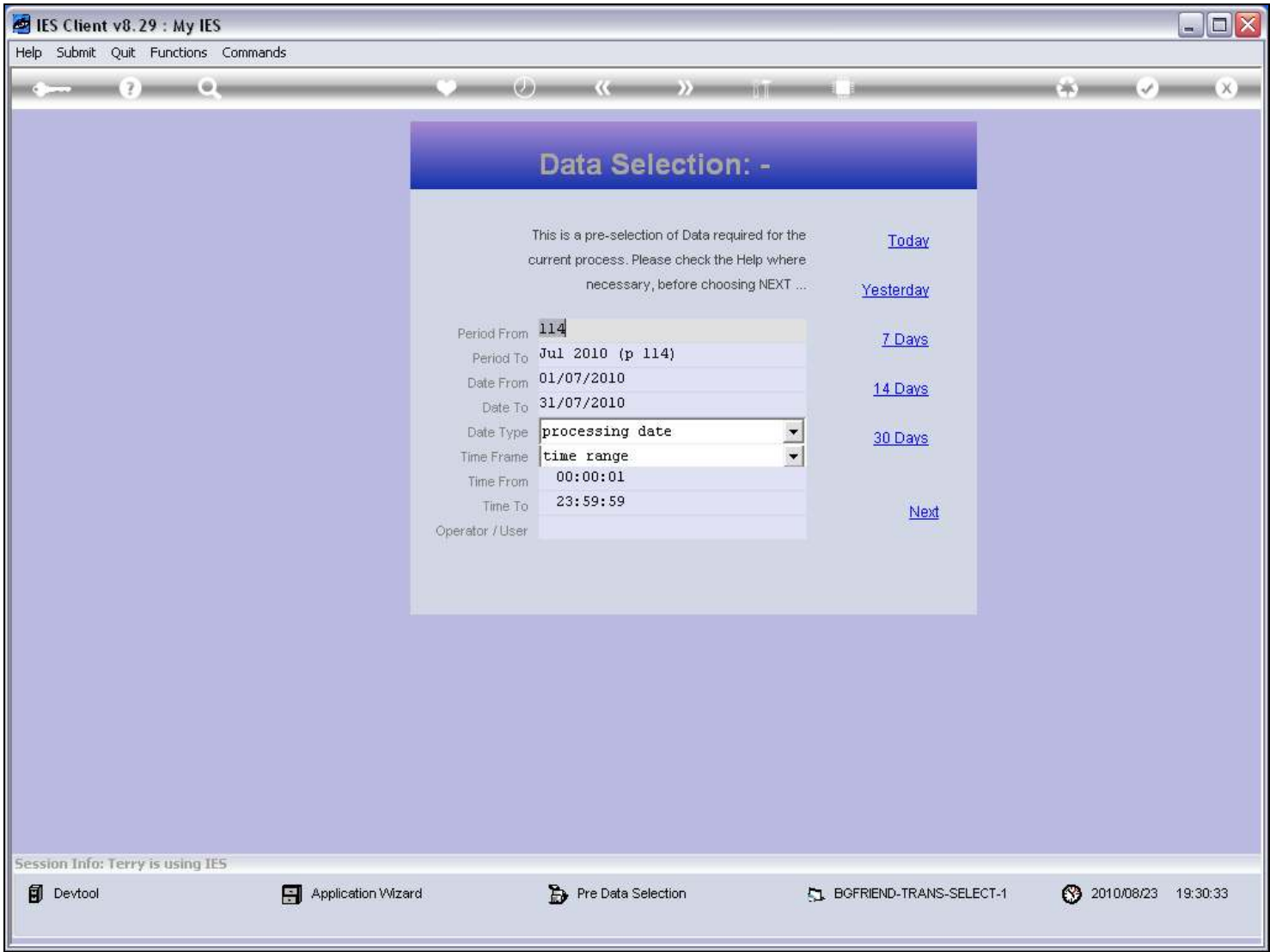
Page 22 of 52

Slide 23 - Slide 23



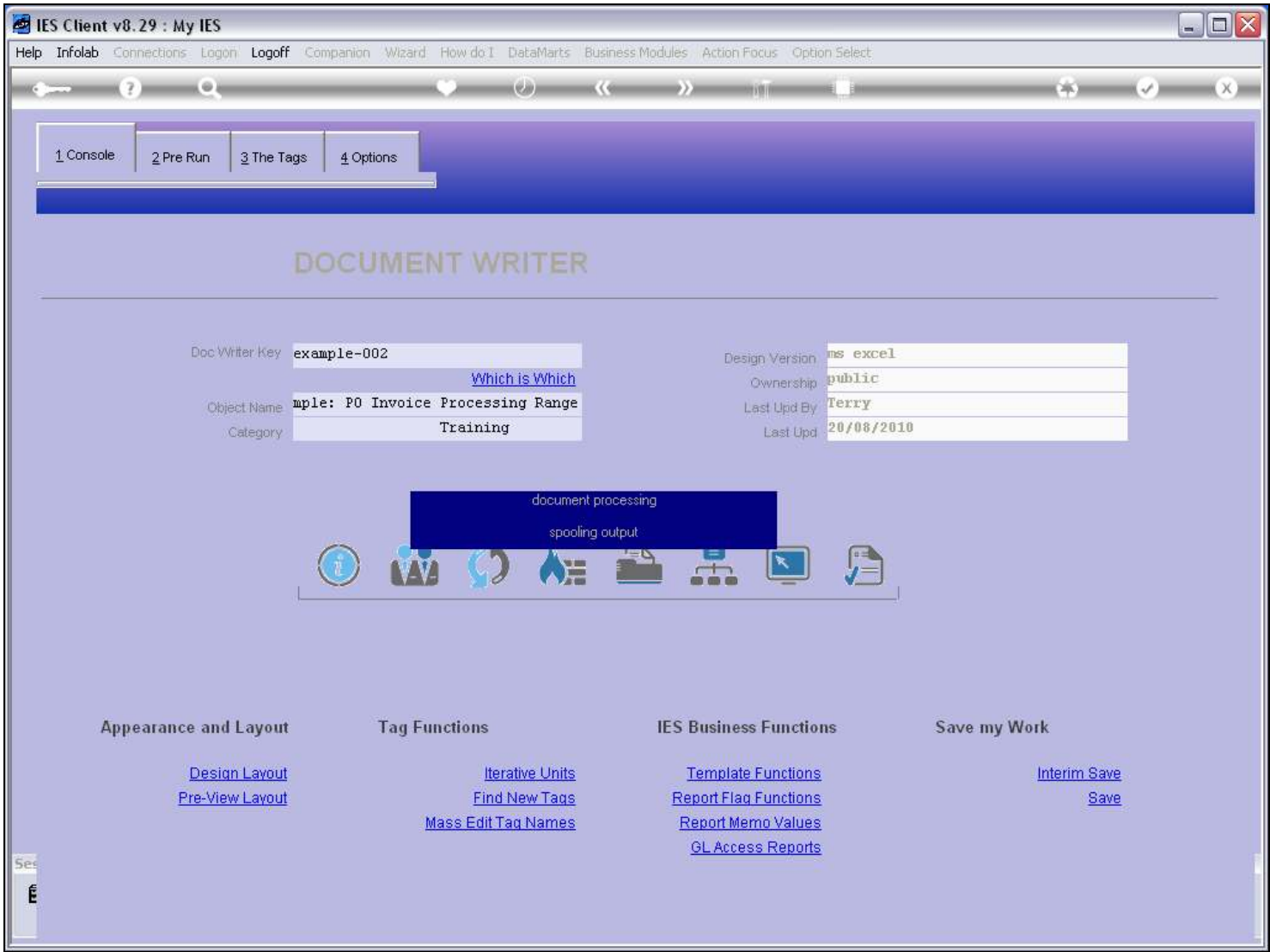
Slide notes

Slide 24 - Slide 24



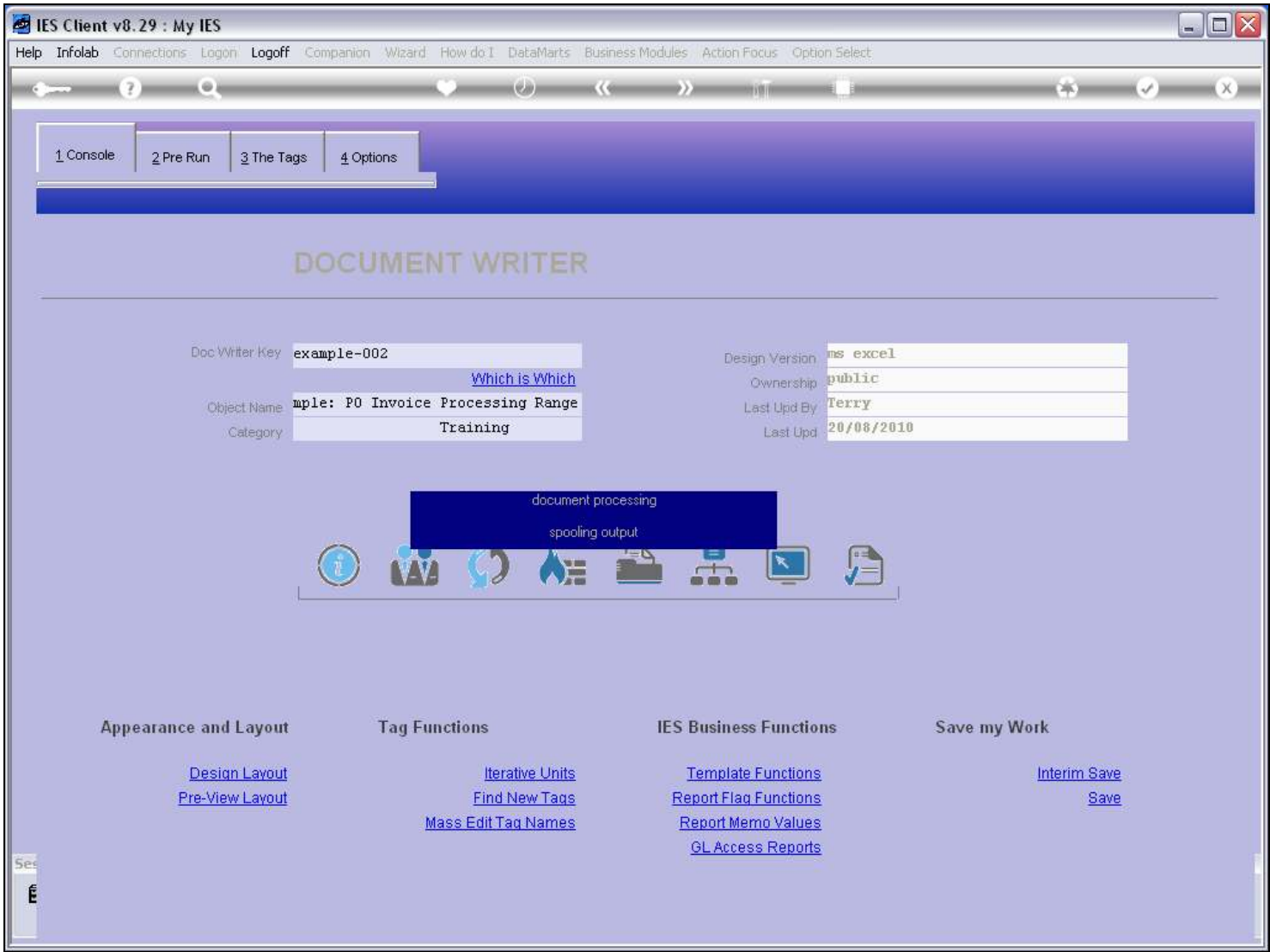
Slide notes

Slide 25 - Slide 25



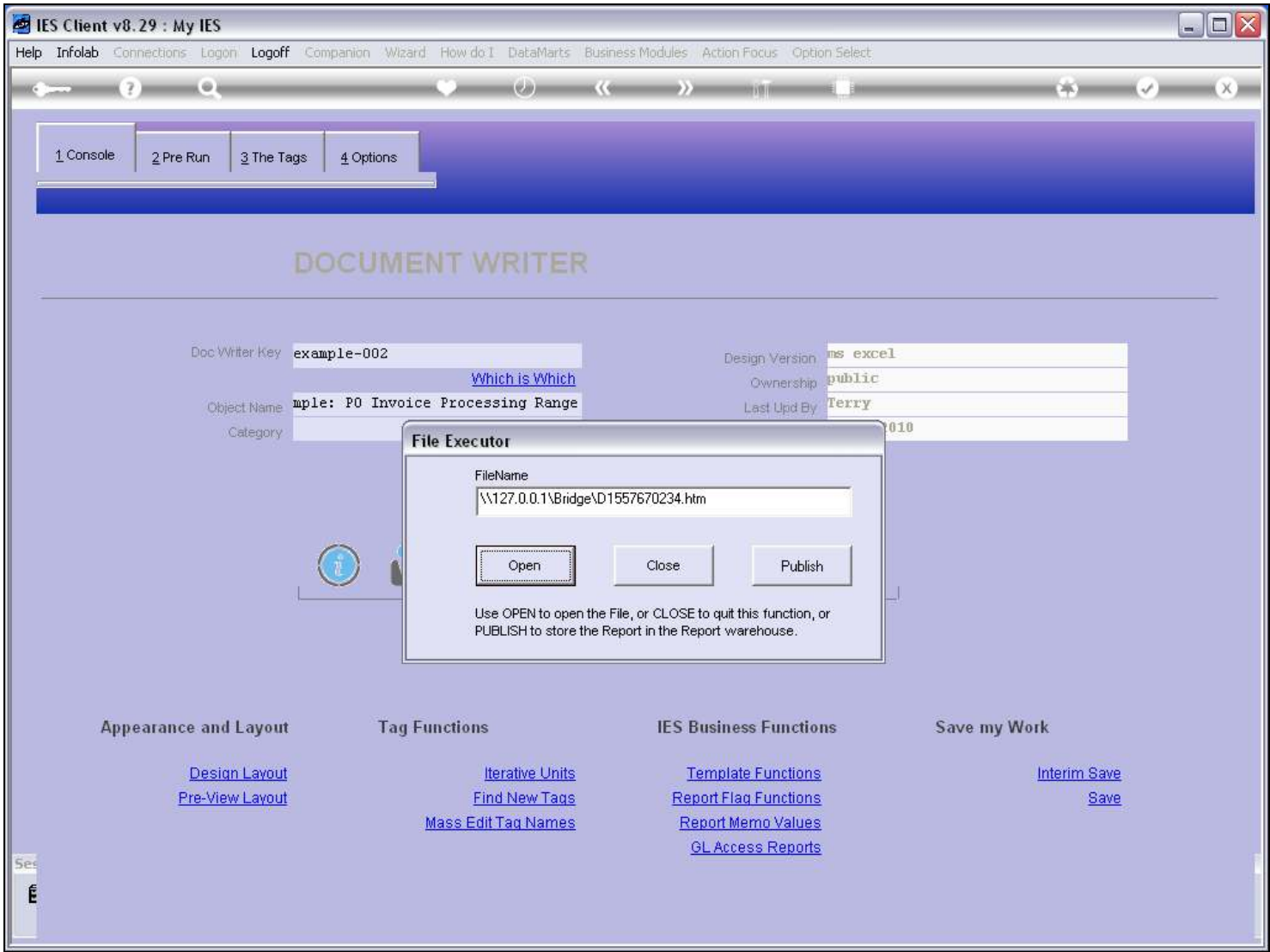
Slide notes

Slide 26 - Slide 26

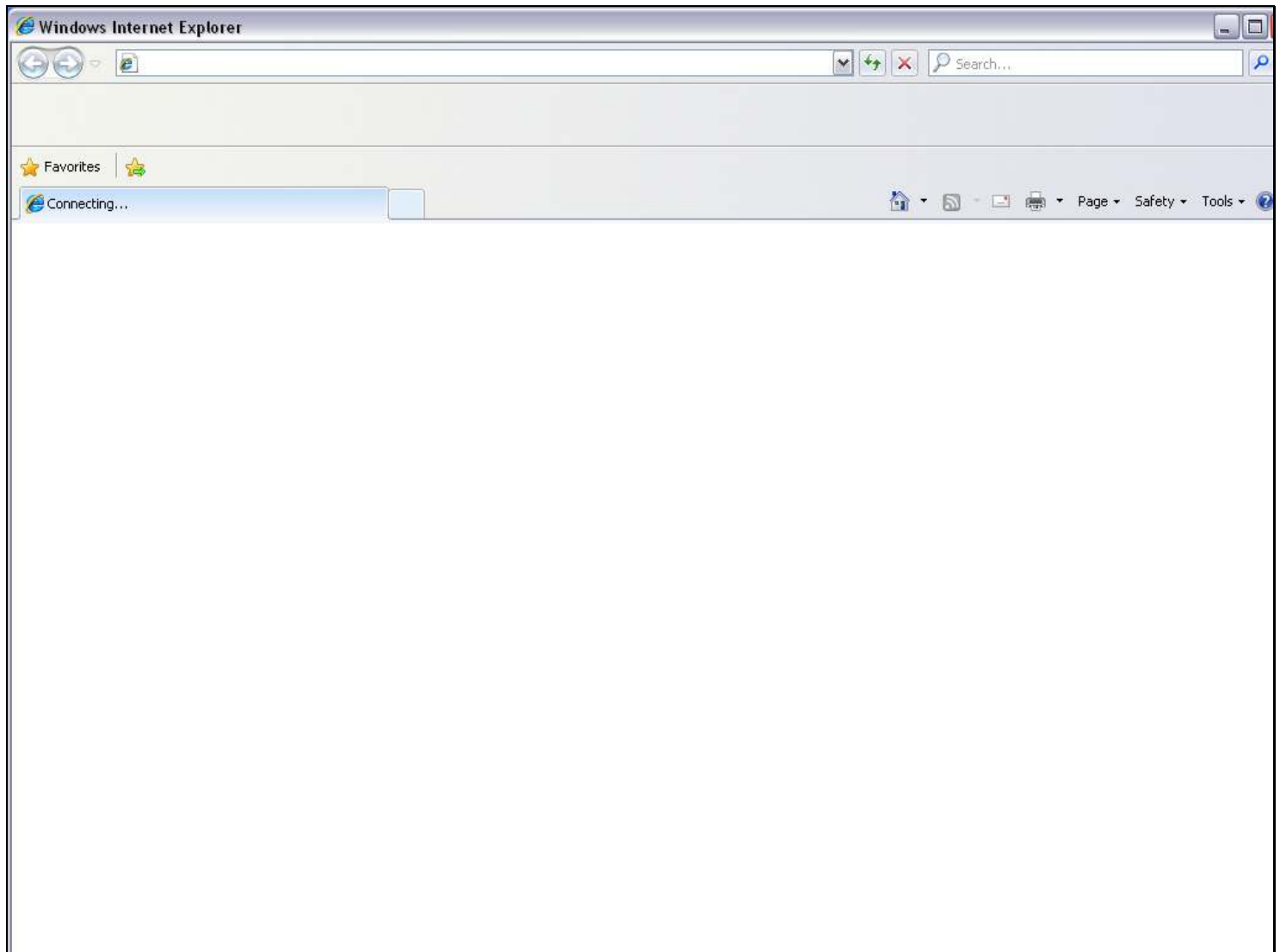


Slide notes

Slide 27 - Slide 27



Slide notes

Slide 28 - Slide 28**Slide notes**

Slide 29 - Slide 29

Purchase Order Invoice Processing, Range Report.

Select Invoices from Jul 2010 (p 114) to Jul 2010 (p 114) :
Order Number Pattern is: []

<u>Transaction Key</u>	<u>Invoice #</u>	<u>Quantity</u>	<u>Amount</u>	<u>Item Description</u>	<u>PO Number</u>	<u>Supplier</u>
1554037533	B/R221	<u>5.00</u>	<u>4,000.00</u>	[inv] Olympus Camedia Mas	ABC.100718-2	C00001 Aanad & Withwal
1554037556	Q-R-L/1100	<u>2.00</u>	<u>936.00</u>	[inv] Nikon 70-300mm F4-5	ABC.100718-2	1000 World Specs
		Total	<u>4,936.00</u>			

Slide notes

And the result is as predicted - we have Quantity and Amount underlined at each line that is produced.

Slide 30 - Slide 30

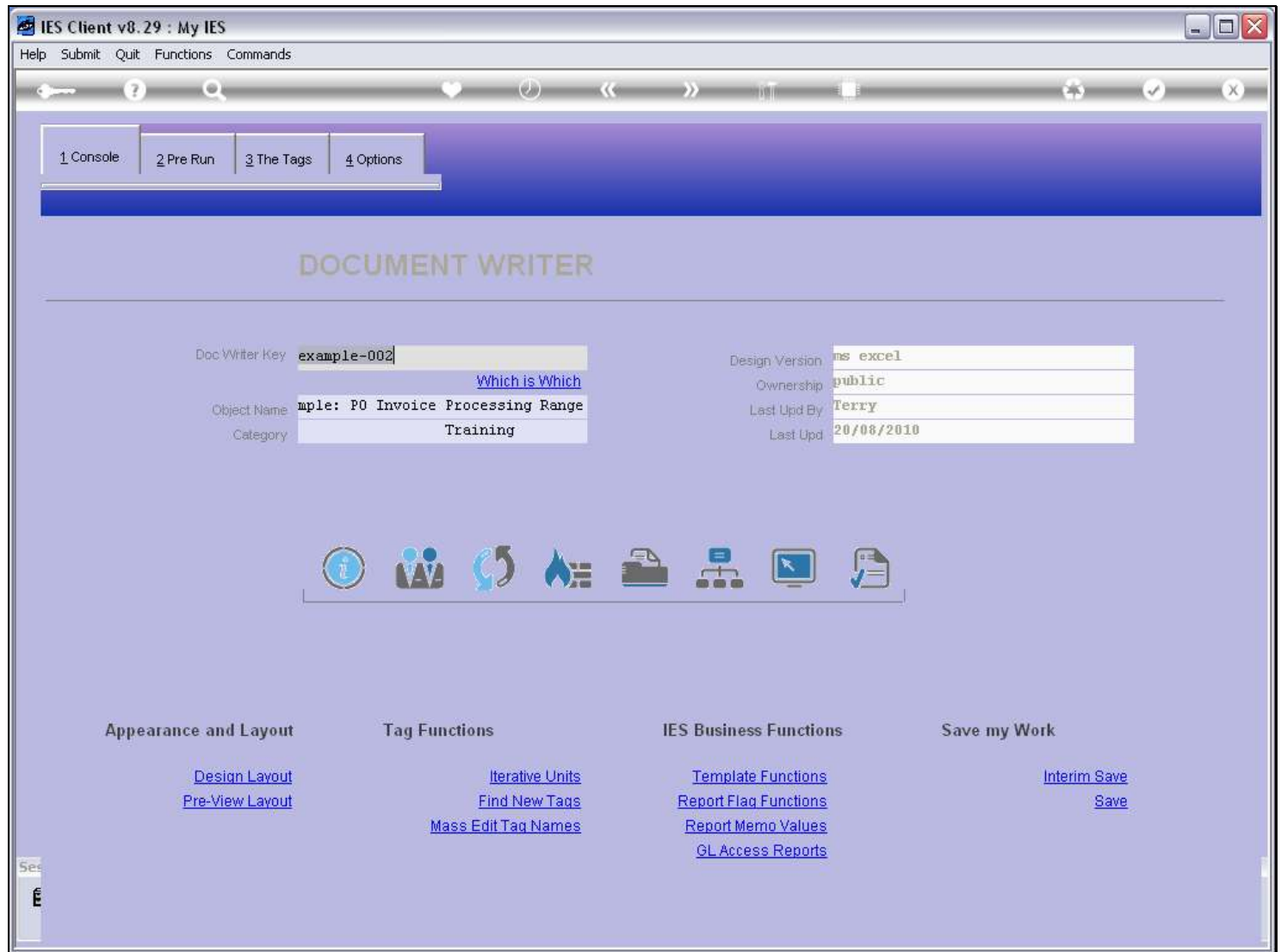
Purchase Order Invoice Processing, Range Report.

Select Invoices from Jul 2010 (p 114) to Jul 2010 (p 114) :
Order Number Pattern is: []

<u>Transaction Key</u>	<u>Invoice #</u>	<u>Quantity</u>	<u>Amount</u>	<u>Item Description</u>	<u>PO Number</u>	<u>Supplier</u>
1554037533	B/R221	5.00	4,000.00	[inv] Olympus Camedia Mas	ABC.100718-2	C00001 Aanad & Withwal
1554037556	Q-R-L/1100	2.00	936.00	[inv] Nikon 70-300mm F4-5	ABC.100718-2	1000 World Specs
		Total	4,936.00			

Slide notes

Slide 31 - Slide 31



Slide notes

Now we return to the layout.

Slide 32 - Slide 32

Purchase Order Invoice Processing, Range Report.

Select Invoices from [0001] to [0002].
Order Number Pattern is: [0010]

Transaction Key	Invoice #	Quantity	Amount	Item Description	PO Number	Supplier
[0003]	[0004]	[0005]	[0006]	[0007]	[0008]	[0009]
[0012]	[0013]	[0014]	[0015]	[0016]	[0017]	[0018]
Total				[0011]		

Slide notes

And look at what we have done here. Immediately below the Unit Line, we have made another line just like that, i.e. everything is the same although of course the Tag Numbers are different.

D1557671048.htm - Microsoft Excel

Home Insert Page Layout Formulas Data Review View Add-Ins

Clipboard

Cut Copy Format Painter

Font

Arial 10 A⁺ A⁻

B I U [Text Color] [Background Color]

Alignment

[Bulleted List] [Numbered List] [Decrease Indent] [Increase Indent] [Wrap Text] [Merge & Center]

Number

General [Format Dropdown]

[Currency] [%] [+0.00] [-0.00]

Styles

Conditional Formatting Format as Table Cell Styles

Insert Delete Cells

A11 fx

	A	B	C	D	E	F	G	H
1								
2								
3	Purchase Order Invoice Processing, Range Report.							
4								
5	Select Invoices from 0001 to 0002 .							
6	Order Number Pattern is: 0010							
7								
8	<u>Transaction Key</u>	<u>Invoice #</u>	<u>Quantity</u>	<u>Amount</u>	<u>Item Description</u>	<u>PO Number</u>	<u>Supplier</u>	
9								
10	0003	0004	0005	0006	0007	0008	0009	
11	0012	0013	0014	0015	0016	0017	0018	
12								
13			Total	0011				
14	***							
15								
16								
17								
18								
19								
20								
21								
22								
23								
24								
25								
26								
27								
28								
29								
30								
31								
32								
33								
34								

And we have underlined the Quantity and Amount Tags on the new line, which is called the Unit Final Line.

D1557671048.htm - Microsoft Excel

Home Insert Page Layout Formulas Data Review View Add-Ins

Clipboard Font Alignment Number Styles Cells

D11 |0014|

Transaction Key	Invoice #	Quantity	Amount	Item Description	PO Number	Supplier
0003	0004	0005	0006	0007	0008	0009
0012	0013	0014	0015	0016	0017	0018
Total				0011		

Page 34 of 52

Slide 35 - Slide 35

D1557671048.htm - Microsoft Excel

Home Insert Page Layout Formulas Data Review View Add-Ins

Clipboard Font Alignment Number Styles Cells

E11 [0015]

Transaction Key	Invoice #	Quantity	Amount	Item Description	PO Number	Supplier
[0003]	[0004]	[0005]	[0006]	[0007]	[0008]	[0009]
[0012]	[0013]	[0014]	[0015]	[0016]	[0017]	[0018]
Total			[0011]			

Purchase Order Invoice Processing, Range Report.

Select Invoices from [0001] to [0002].
Order Number Pattern is: [0010]

Slide notes

D1557671048.htm - Microsoft Excel

Home

Insert

Page Layout

Formulas

Data

Review

View

Add-Ins

Clipboard

Cut

Copy

Format Painter

Arial

10

A

B

I

U

A

Font

Wrap Text

Merge & Center

Alignment

General

%

0.00

Number

Conditional Formatting

Format as Table

Cell Styles

Styles

Insert

Delete

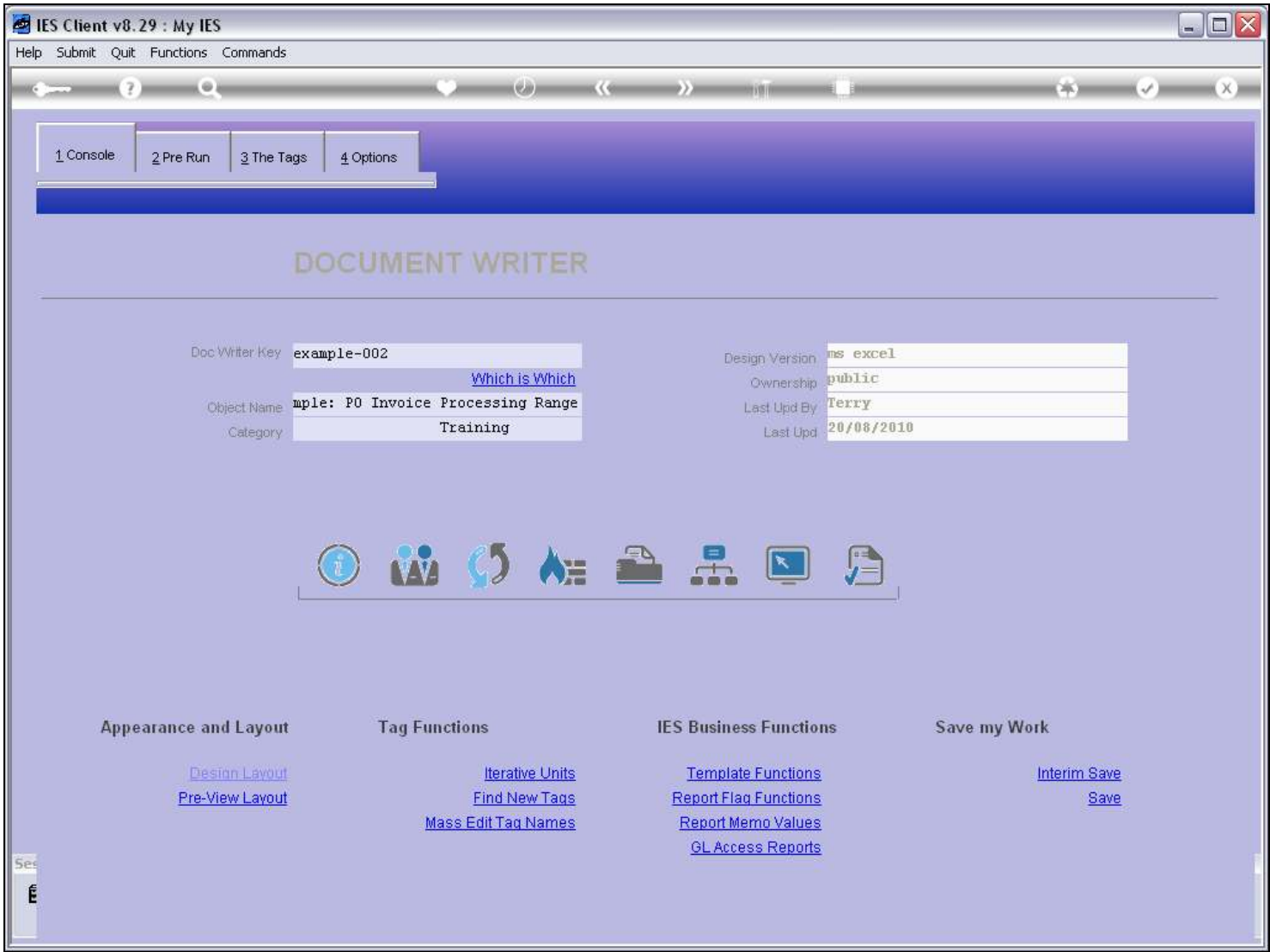
Cells

F17

	A	B	C	D	E	F	G	H	
1									
2									
3	Purchase Order Invoice Processing, Range Report.								
4									
5	Select Invoices from 0001 to 0002 .								
6	Order Number Pattern is: 0010								
7									
8	<u>Transaction Key</u>	<u>Invoice #</u>	<u>Quantity</u>	<u>Amount</u>	<u>Item Description</u>	<u>PO Number</u>	<u>Supplier</u>		
9									
10	0003	0004	0005	0006	0007	0008	0009		
11	0012	0013	0014	0015	0016	0017	0018		
12									
13				Total	0011				
14	***								
15									
16									
17									
18									
19									
20									
21									
22									
23									
24									
25									
26									
27									
28									
29									
30									
31									
32									
33									
34									

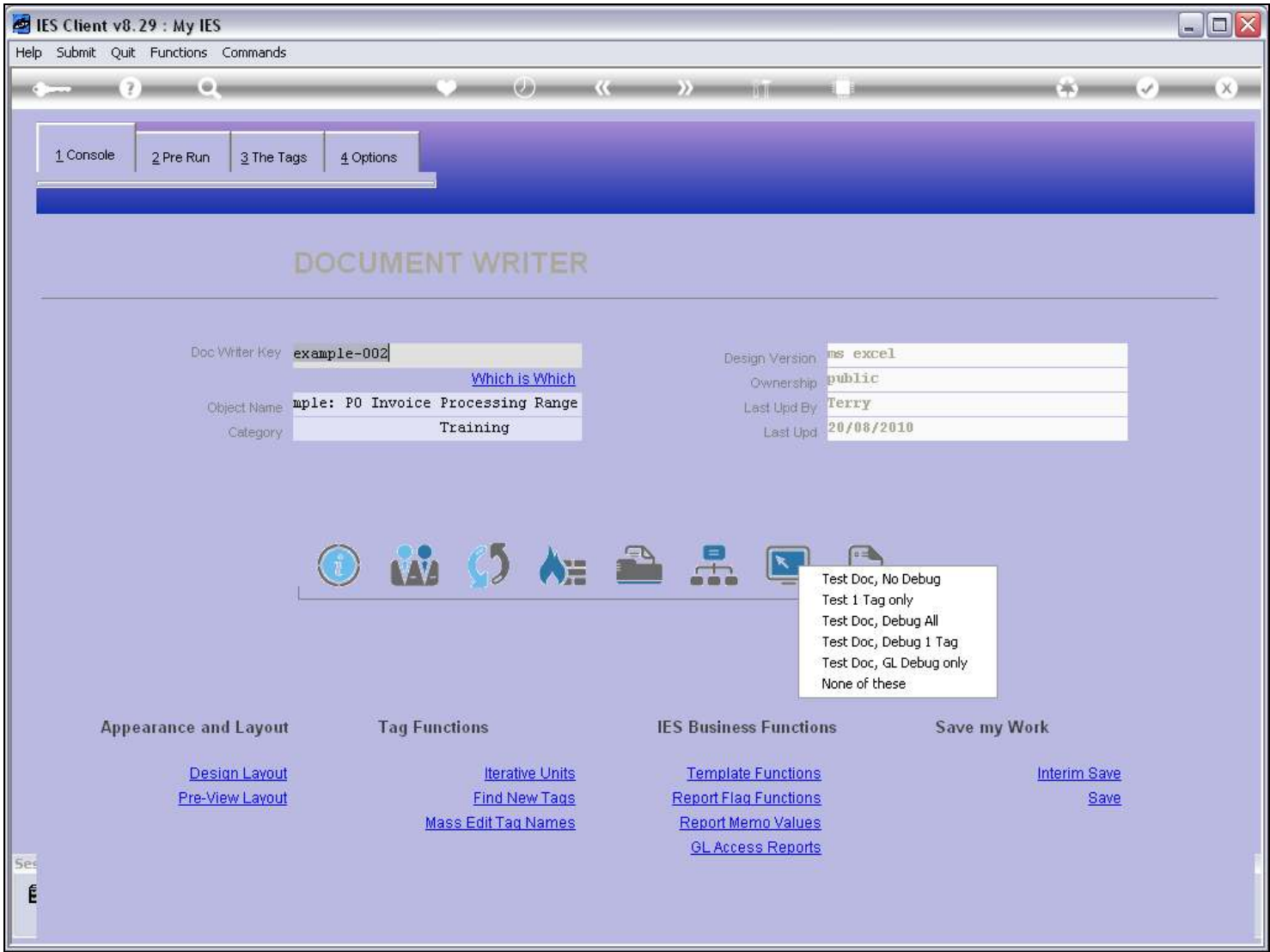
Page 36 of 52

Slide 37 - Slide 37



Slide notes

Slide 38 - Slide 38



Slide notes

Slide 39 - Slide 39

\\127.0.0.1\Bridge\ID1557671283.htm - Windows Internet Explorer

Your system is low on virtual memory. Windows is increasing the size of your virtual memory paging file. During this process, memory requests for some applications may be denied. For more information, see Help.

File Edit View Favorites Tools Help

Google Search Share Sidewiki Check Translate AutoFill Sign In

Favorites Free Hotmail Suggested Sites Web Slice Gallery

\\127.0.0.1\Bridge\ID1557671283.htm

Page Safety Tools

Purchase Order Invoice Processing, Range Report.

Select Invoices from Jul 2010 (p 114) to Jul 2010 (p 114) :
Order Number Pattern is: []

<u>Transaction Key</u>	<u>Invoice #</u>	<u>Quantity</u>	<u>Amount</u>	<u>Item Description</u>	<u>PO Number</u>	<u>Supplier</u>
1554037533	B/R221	5.00	4,000.00	[inv] Olympus Camedia Mas	ABC.100718-2	C00001 Aanad & Withwal
1554037556	Q-R-L/1100	2.00	936.00	[inv] Nikon 70-300mm F4-5	ABC.100718-2	1000 World Specs
		Total	4,936.00			

Slide notes

Slide 40 - Slide 40

W127.0.0.1\Bridge\ID1557671283.htm - Windows Internet Explorer

Your system is low on virtual memory. Windows is increasing the size of your virtual memory paging file. During this process, memory requests for some applications may be denied. For more information, see Help.

File Edit View Favorites Tools Help

Google Search Share Sidewiki Check Translate AutoFill Sign In

Favorites Free Hotmail Suggested Sites Web Slice Gallery

W127.0.0.1\Bridge\ID1557671283.htm

Page Safety Tools

Purchase Order Invoice Processing, Range Report.

Select Invoices from Jul 2010 (p 114) to Jul 2010 (p 114) :
Order Number Pattern is: []

Transaction Key	Invoice #	Quantity	Amount	Item Description	PO Number	Supplier
1554037533	B/R221	5.00	4,000.00	[inv] Olympus Camedia Mas	ABC.100718-2	C00001 Aanad & Withwal
1554037556	Q-R-L/1100	2.00	936.00	[inv] Nikon 70-300mm F4-5	ABC.100718-2	1000 World Specs
Total			4,936.00			

Slide notes

Slide 41 - Slide 41

W127.0.0.1\Bridge\ID1557671283.htm - Windows Internet Explorer

Your system is low on virtual memory. Windows is increasing the size of your virtual memory paging file. During this process, memory requests for some applications may be denied. For more information, see Help.

File Edit View Favorites Tools Help

Google Search Share Sidewiki Check Translate AutoFill Sign In

Favorites Free Hotmail Suggested Sites Web Slice Gallery

W127.0.0.1\Bridge\ID1557671283.htm

Purchase Order Invoice Processing, Range Report.

Select Invoices from Jul 2010 (p 114) to Jul 2010 (p 114) :
Order Number Pattern is: []

<u>Transaction Key</u>	<u>Invoice #</u>	<u>Quantity</u>	<u>Amount</u>	<u>Item Description</u>	<u>PO Number</u>	<u>Supplier</u>
1554037533	B/R221	5.00	4,000.00 [inv]	Olympus Camedia Mas	ABC.100718-2	C00001 Aanad & Withwal
1554037556	Q-R-L/1100	2.00	936.00 [inv]	Nikon 70-300mm F4-5	ABC.100718-2	1000 World Specs
Total			4,936.00			

Slide notes

And now our result is perfect! The underline effect is only present at the last line that the unit produces. Whether the Unit produces 2 or 20 or a dozen lines, the underline will only appear at the last line. So how is this done at the Tags?

Slide 42 - Slide 42

IES Client v8.29 : My IES

Help Submit Quit Functions Commands

1 Console2 Pre Run3 The Tags4 Options

Tag Result Macros: -

	>>> Tags	Value Names	Exec It
1	0001	Period From	1
2	0002	Period To	1
3	0010	PO Number Pattern	1
4	0003	Unit: Example 002	1
5	0004	*** unit dependent	1
6	0005	*** unit dependent	1
7	0006	*** unit dependent	1
8	0007	*** unit dependent	1
9	0008	*** unit dependent	1
10	0009	*** unit dependent	1
11	0012	*** final unit line	1
12	0013	*** unit dependent	1
13	0014	*** unit dependent	1
14	0015	*** unit dependent	1
15	0016	*** unit dependent	1
16	0017	*** unit dependent	1
17	0018	*** unit dependent	1
18	0011	Total Amount	1

See

E

NexPreAddInsEdDel

Where is that tag !

Select from Tag List

Search for Tag Number

Search for Tag Name

Current Tag Focus: -

Row1

Tag #0001

NamePeriod From

Open the Tag Macro

Slide notes

Our Unit itself is called at Tag 3, and ends at Tag 9

Slide 43 - Slide 43

IES Client v8.29 : My IES

Help Submit Quit Functions Commands

1 Console2 Pre Run3 The Tags4 Options

Tag Result Macros: -

	>>> Tags	Value Names	Exec It
1	0001	Period From	1
2	0002	Period To	1
3	0010	PO Number Pattern	1
4	0003	Unit: Example 002	1
5	0004	*** unit dependent	1
6	0005	*** unit dependent	1
7	0006	*** unit dependent	1
8	0007	*** unit dependent	1
9	0008	*** unit dependent	1
10	0009	*** unit dependent	1
11	0012	*** final unit line	1
12	0013	*** unit dependent	1
13	0014	*** unit dependent	1
14	0015	*** unit dependent	1
15	0016	*** unit dependent	1
16	0017	*** unit dependent	1
17	0018	*** unit dependent	1
18	0011	Total Amount	1

See

E

NexPreAddInsEdDel

Where is that tag !

Select from Tag List

Search for Tag Number

Search for Tag Name

Current Tag Focus: -

Row1

Tag #0001

NamePeriod From

Open the Tag Macro

Slide notes

Slide 44 - Slide 44

IES Client v8.29 : My IES

Help Submit Quit Functions Commands

1 Console 2 Pre Run 3 The Tags 4 Options

Tag Result Macros: -

>>> Tags	Value Names	Exec It
1 0001	Period From	1
2 0002	Period To	1
3 0010	PO Number Pattern	1
4 0003	Unit: Example 002	1
5 0004	*** unit dependent	1
6 0005	*** unit dependent	1
7 0006	*** unit dependent	1
8 0007	*** unit dependent	1
9 0008	*** unit dependent	1
10 0009	*** unit dependent	1
11 0012	*** final unit line	1
12 0013	*** unit dependent	1
13 0014	*** unit dependent	1
14 0015	*** unit dependent	1
15 0016	*** unit dependent	1
16 0017	*** unit dependent	1
17 0018	*** unit dependent	1
18 0011	Total Amount	1

Where is that tag !

[Select from Tag List](#)

[Search for Tag Number](#)

[Search for Tag Name](#)

Current Tag Focus: -

Row	1
Tag #	0001
Name	Period From

[Open the Tag Macro](#)

See E

Nex Pre Add Ins Ed Del

Slide notes

Immediately following that, we have an equal number of Tags, and all are Unit Dependents just like above, except for the 1st Tag in the group, which is a 'Final Unit Line'.

Slide 45 - Slide 45

IES Client v8.29 : My IES

Help Submit Quit Functions Commands

1 Console2 Pre Run3 The Tags4 Options

Tag Result Macros: -

>>> Tags	Value Names	Exec It
1 0001	Period From	1
2 0002	Period To	1
3 0010	PO Number Pattern	1
4 0003	Unit: Example 002	1
5 0004	*** unit dependent	1
6 0005	*** unit dependent	1
7 0006	*** unit dependent	1
8 0007	*** unit dependent	1
9 0008	*** unit dependent	1
10 0009	*** unit dependent	1
11 0012	*** final unit line	1
12 0013	*** unit dependent	1
13 0014	*** unit dependent	1
14 0015	*** unit dependent	1
15 0016	*** unit dependent	1
16 0017	*** unit dependent	1
17 0018	*** unit dependent	1
18 0011	Total Amount	1

See

E

NexPreAddInsEdDel

Where is that tag !

[Select from Tag List](#)

[Search for Tag Number](#)

[Search for Tag Name](#)

Current Tag Focus: -

Row1

Tag #0001

NamePeriod From

[Open the Tag Macro](#)

Slide notes

Slide 46 - Slide 46

IES Client v8.29 : My IES

Help Submit Quit Functions Commands

1 Console2 Pre Run3 The Tags4 Options

Tag Result Macros: -

	>>> Tags	Value Names	Exec It
1	0001	Period From	1
2	0002	Period To	1
3	0010	PO Number Pattern	1
4	0003	Unit: Example 002	1
5	0004	*** unit dependent	1
6	0005	*** unit dependent	1
7	0006	*** unit dependent	1
8	0007	*** unit dependent	1
9	0008	*** unit dependent	1
10	0009	*** unit dependent	1
11	0012	*** final unit line	1
12	0013	*** unit dependent	1
13	0014	*** unit dependent	1
14	0015	*** unit dependent	1
15	0016	*** unit dependent	1
16	0017	*** unit dependent	1
17	0018	*** unit dependent	1
18	0011	Total Amount	1

See

E

NexPreAddInsEdDel

Where is that tag !

Select from Tag List

Search for Tag Number

Search for Tag Name

Current Tag Focus: -

Row1

Tag #0001

NamePeriod From

Open the Tag Macro

Slide notes

Slide 47 - Slide 47

IES Client v8.29 : My IES

Help Submit Quit Functions Commands

1 Console2 Pre Run3 The Tags4 Options

Tag Result Macros: -

	>>> Tags	Value Names	Exec It
1	0001	Period From	1
2	0002	Period To	1
3	0010	PO Number Pattern	1
4	0003	Unit: Example 002	1
5	0004	*** unit dependent	1
6	0005	*** unit dependent	1
7	0006	*** unit dependent	1
8	0007	*** unit dependent	1
9	0008	*** unit dependent	1
10	0009	*** unit dependent	1
11	0012	*** final unit line	1
12	0013	*** unit dependent	1
13	0014	*** unit dependent	1
14	0015	*** unit dependent	1
15	0016	*** unit dependent	1
16	0017	*** unit dependent	1
17	0018	*** unit dependent	1
18	0011	Total Amount	1

See

E

NexPreAddInsEdDel

Where is that tag !

Select from Tag List

Search for Tag Number

Search for Tag Name

Current Tag Focus: -

Row1

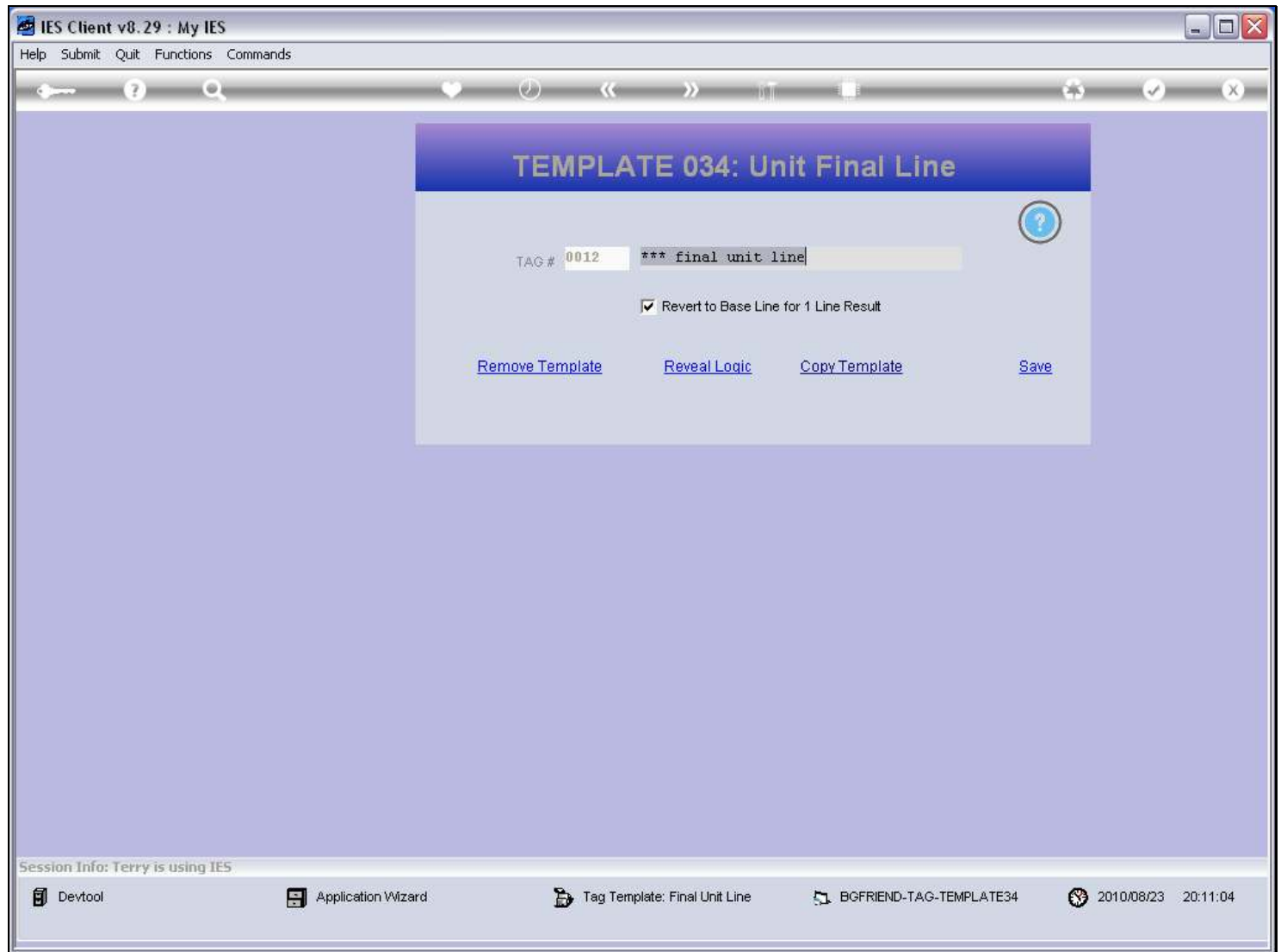
Tag #0001

NamePeriod From

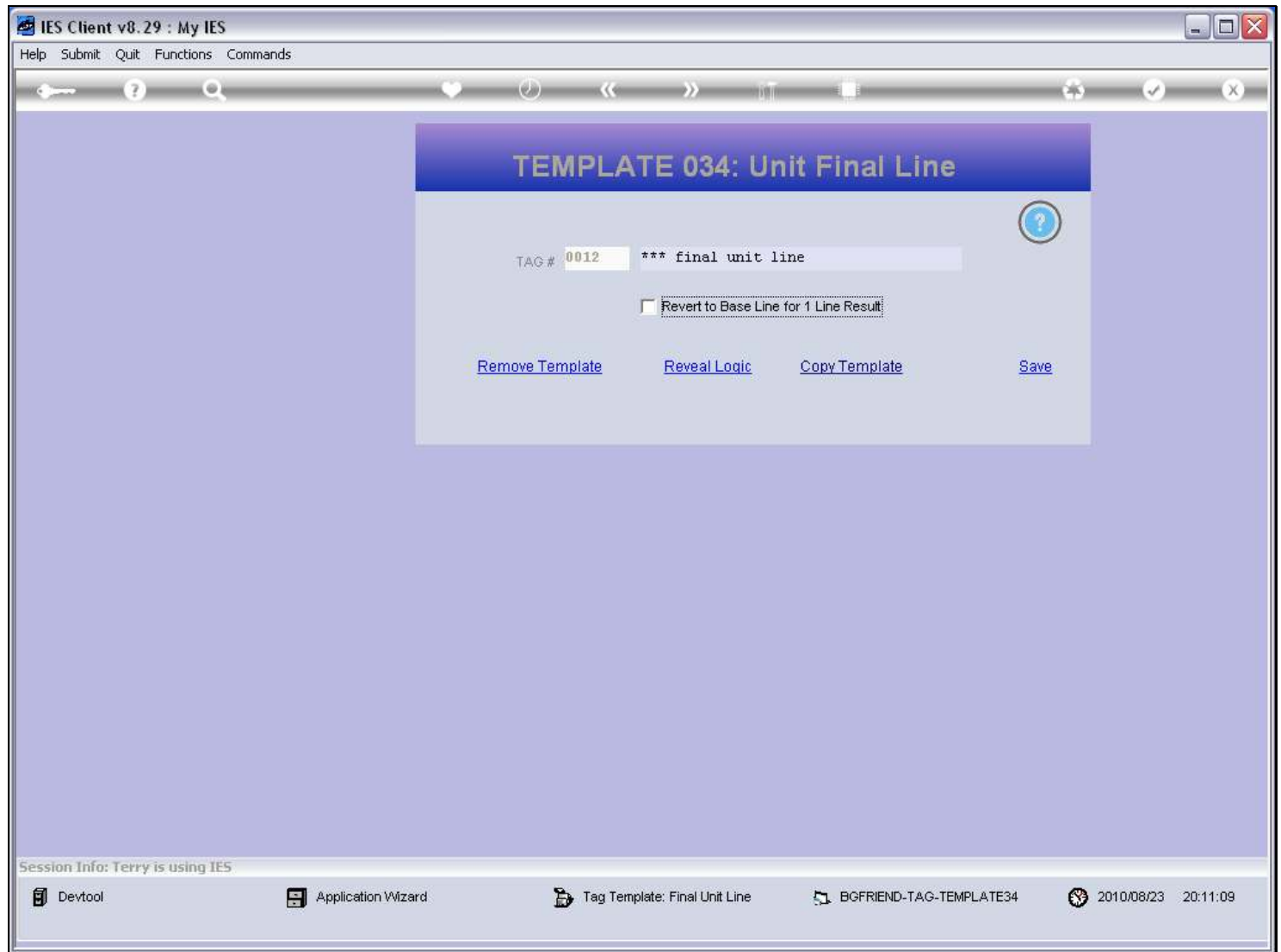
Open the Tag Macro

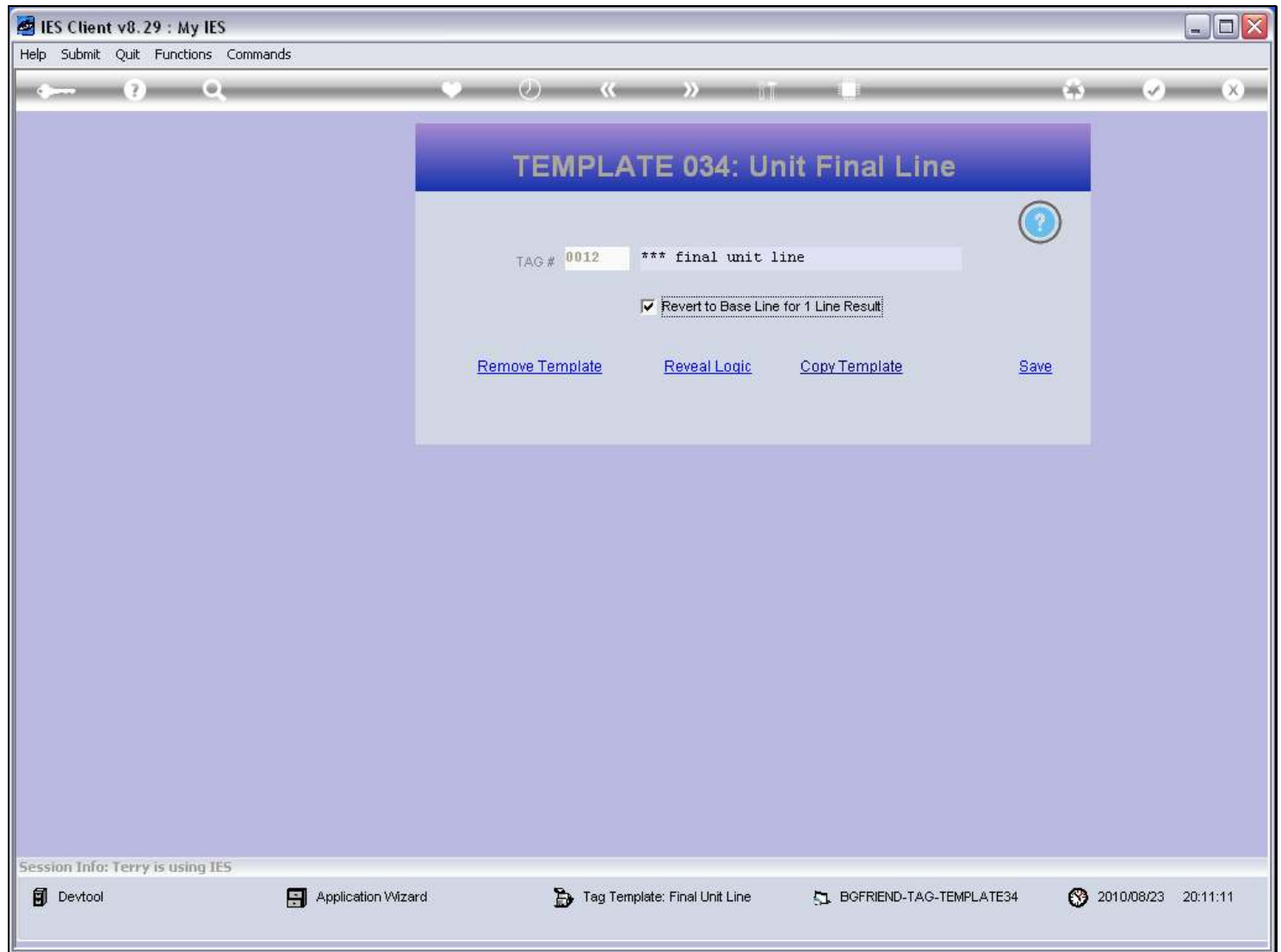
Slide notes

Let's look at this 'Final Unit Line' Tag.

Slide 48 - Slide 48**Slide notes**

It uses the Template called 'Unit Final Line', and the setting for 'Revert to Base Line' and has the effect that if the Unit produces only 1 line of output, then the underline or other modifications on the final line will not kick in.

Slide 49 - Slide 49**Slide notes**

Slide 50 - Slide 50**Slide notes**

Slide 51 - Slide 51

IES Client v8.29 : My IES

Help Submit Quit Functions Commands

1 Console2 Pre Run3 The Tags4 Options

Tag Result Macros: -

	>>> Tags	Value Names	Exec It
1	0001	Period From	1
2	0002	Period To	1
3	0010	PO Number Pattern	1
4	0003	Unit: Example 002	1
5	0004	*** unit dependent	1
6	0005	*** unit dependent	1
7	0006	*** unit dependent	1
8	0007	*** unit dependent	1
9	0008	*** unit dependent	1
10	0009	*** unit dependent	1
11	0012	*** final unit line	1
12	0013	*** unit dependent	1
13	0014	*** unit dependent	1
14	0015	*** unit dependent	1
15	0016	*** unit dependent	1
16	0017	*** unit dependent	1
17	0018	*** unit dependent	1
18	0011	Total Amount	1

Search

E

Nex

Pre

Add

Ins

Ed

Del

Where is that tag !

Select from Tag List

Search for Tag Number

Search for Tag Name

Current Tag Focus: -

Row11

Tag #0012

Name*** final unit line

Open the Tag Macro

Slide notes

Slide 52 - Slide 52

IES Client v8.29 : My IES

Help Submit Quit Functions Commands

1 Console2 Pre Run3 The Tags4 Options

Tag Result Macros: -

	>>> Tags	Value Names	Exec It
1	0001	Period From	1
2	0002	Period To	1
3	0010	PO Number Pattern	1
4	0003	Unit: Example 002	1
5	0004	*** unit dependent	1
6	0005	*** unit dependent	1
7	0006	*** unit dependent	1
8	0007	*** unit dependent	1
9	0008	*** unit dependent	1
10	0009	*** unit dependent	1
11	0012	*** final unit line	1
12	0013	*** unit dependent	1
13	0014	*** unit dependent	1
14	0015	*** unit dependent	1
15	0016	*** unit dependent	1
16	0017	*** unit dependent	1
17	0018	*** unit dependent	1
18	0011	Total Amount	1

Search

E

Nex

Pre

Add

Ins

Ed

Del

Where is that tag !

Select from Tag List

Search for Tag Number

Search for Tag Name

Current Tag Focus: -

Row11

Tag #0012

Name*** final unit line

Open the Tag Macro

Slide notes

So that is how we use the Template for 'Unit Final Line'.