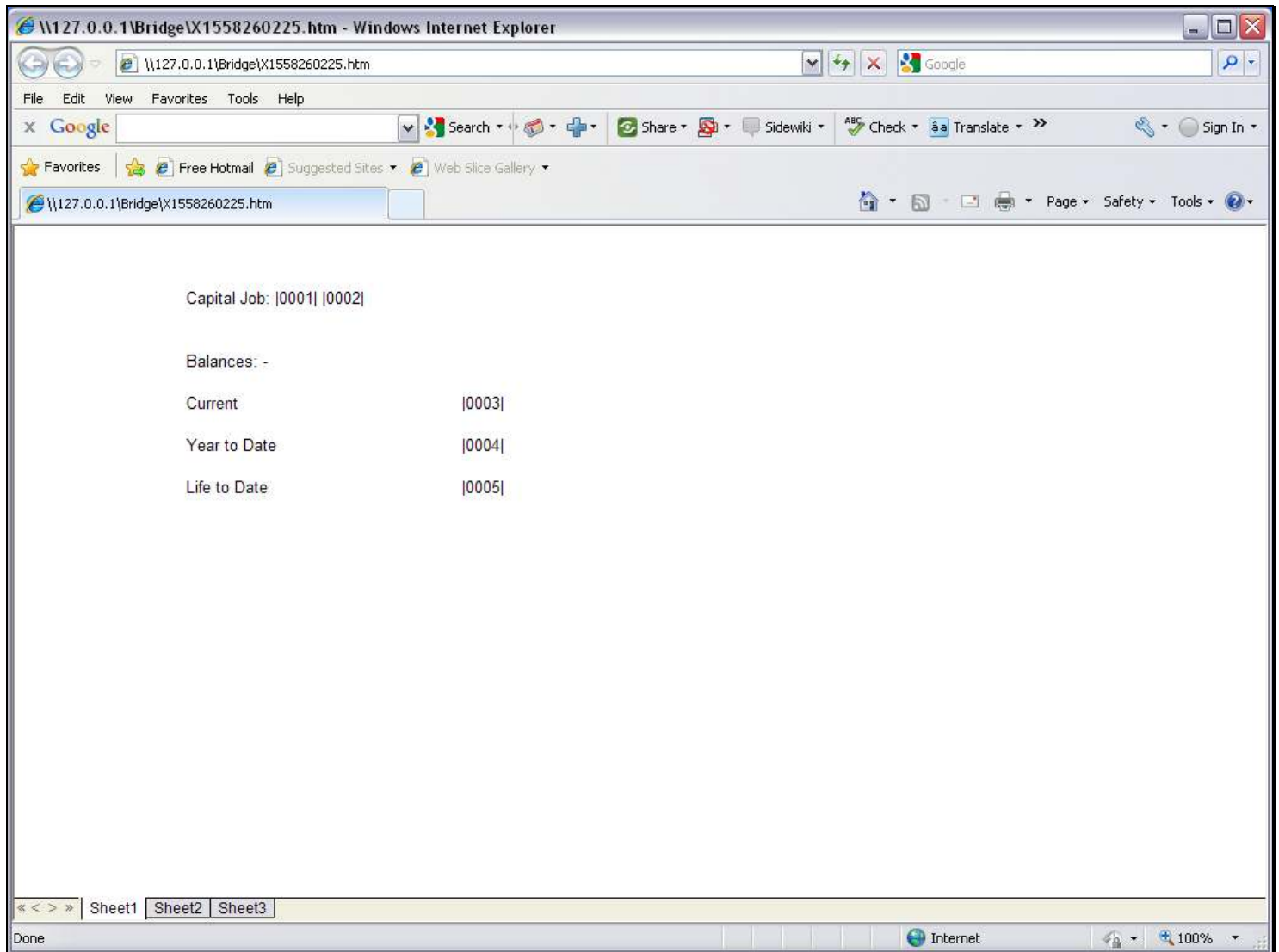


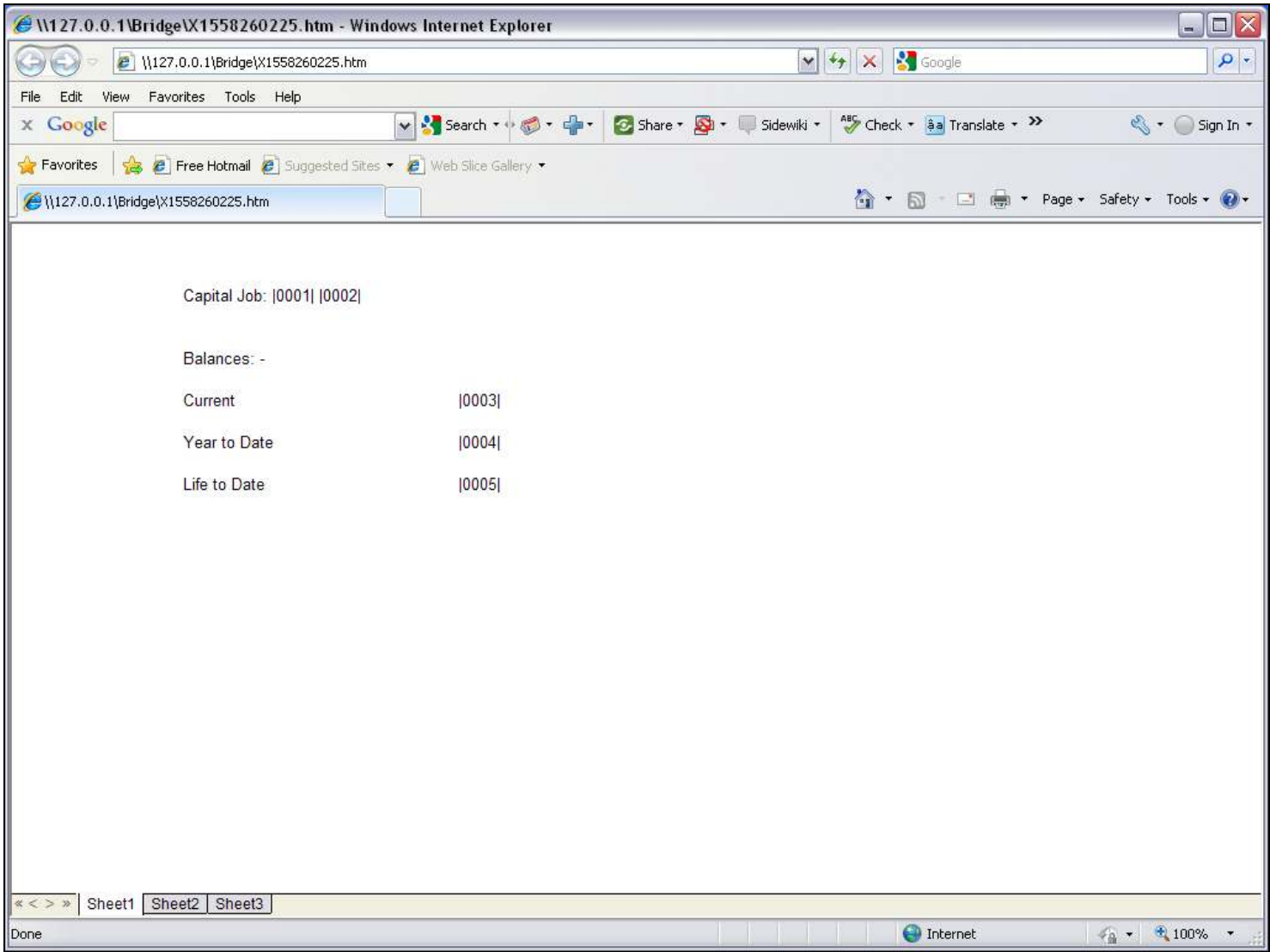
Slide 1 - Slide 1



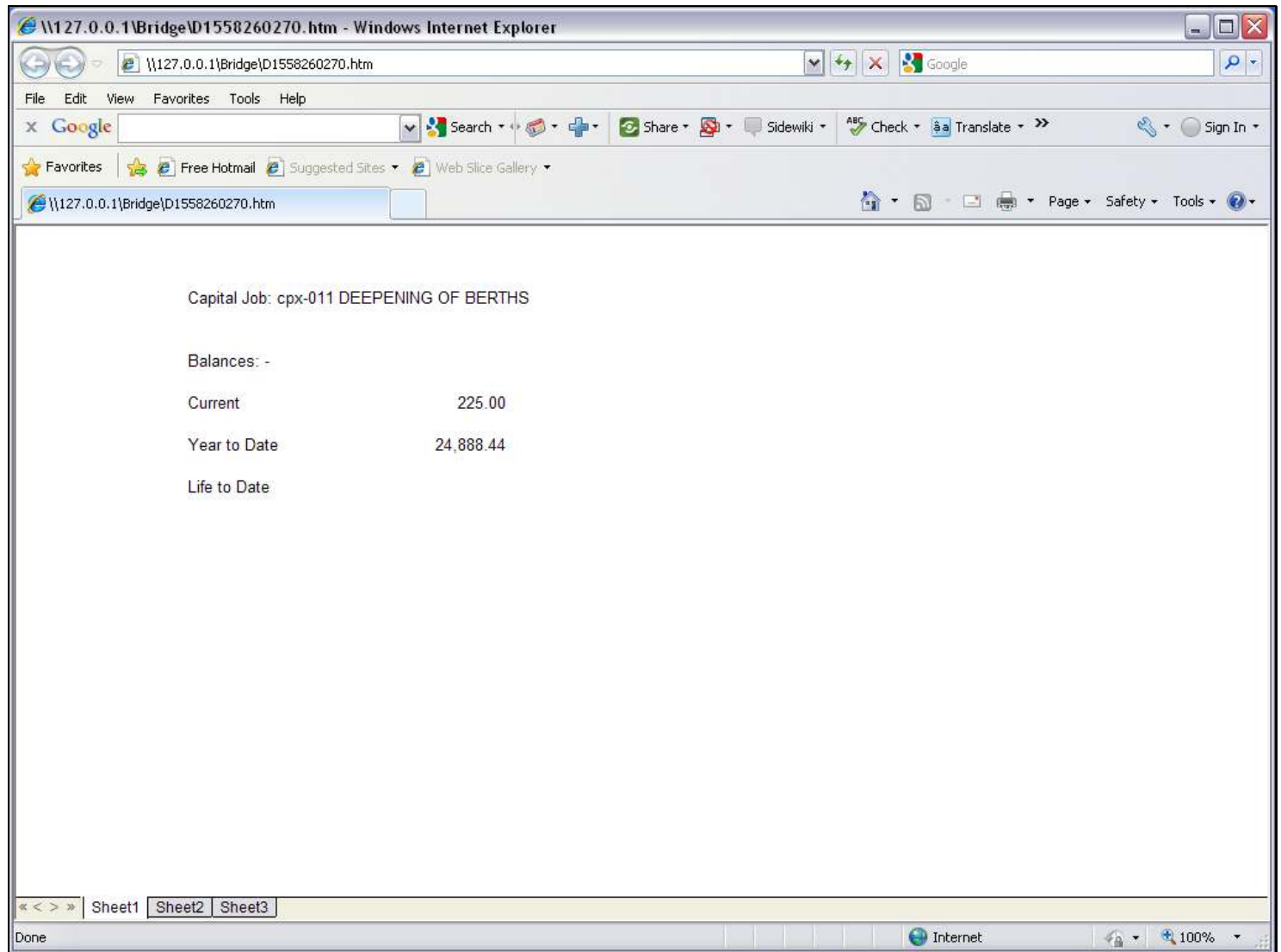
Slide notes

We show this layout for a Job Account balances print. All the Tags are already done except for the Life to Date balance, and we will use a 'Numeric Name from Data Source' Template to do Tag 5.

Slide 2 - Slide 2

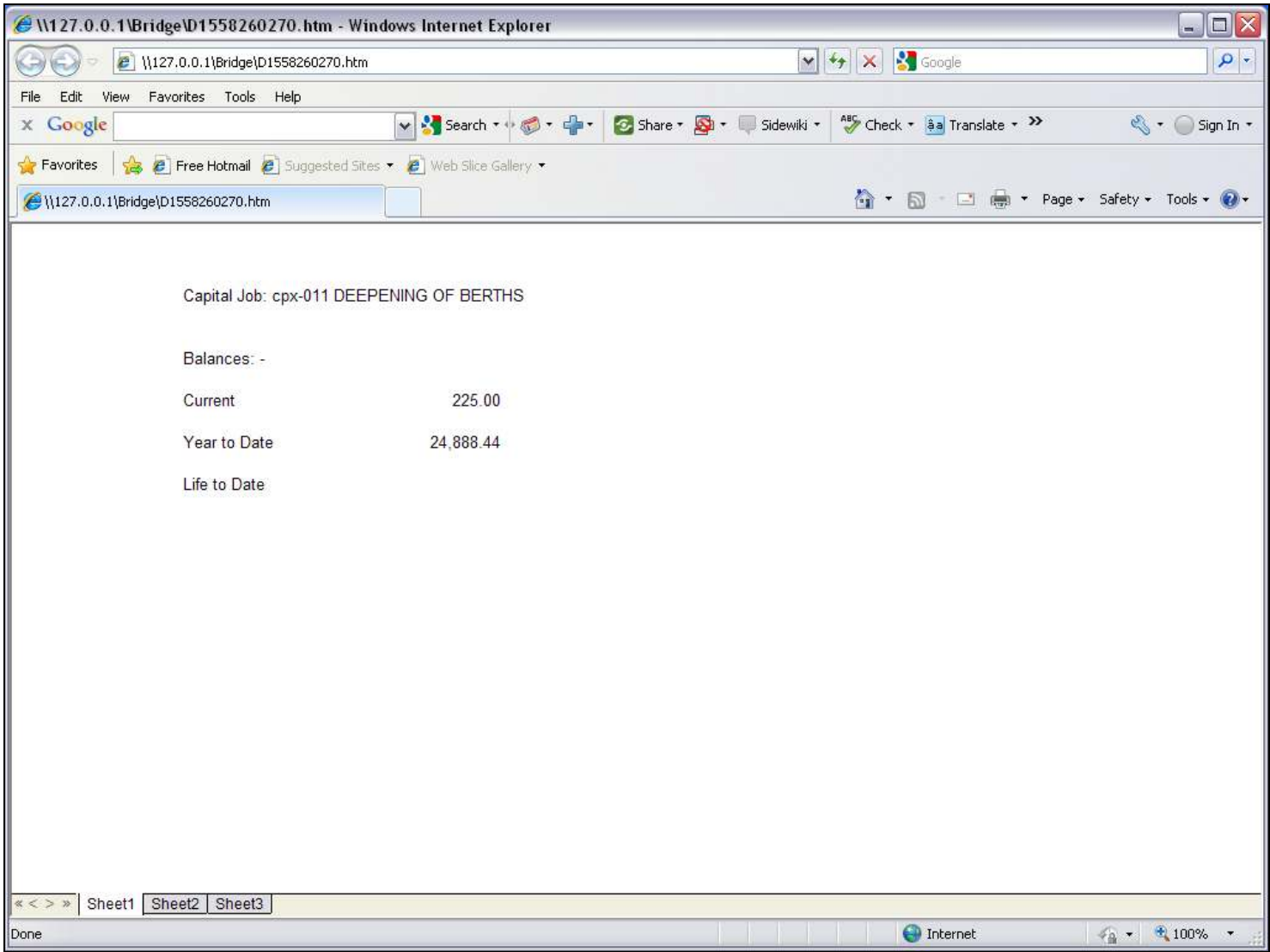


Slide notes

Slide 3 - Slide 3**Slide notes**

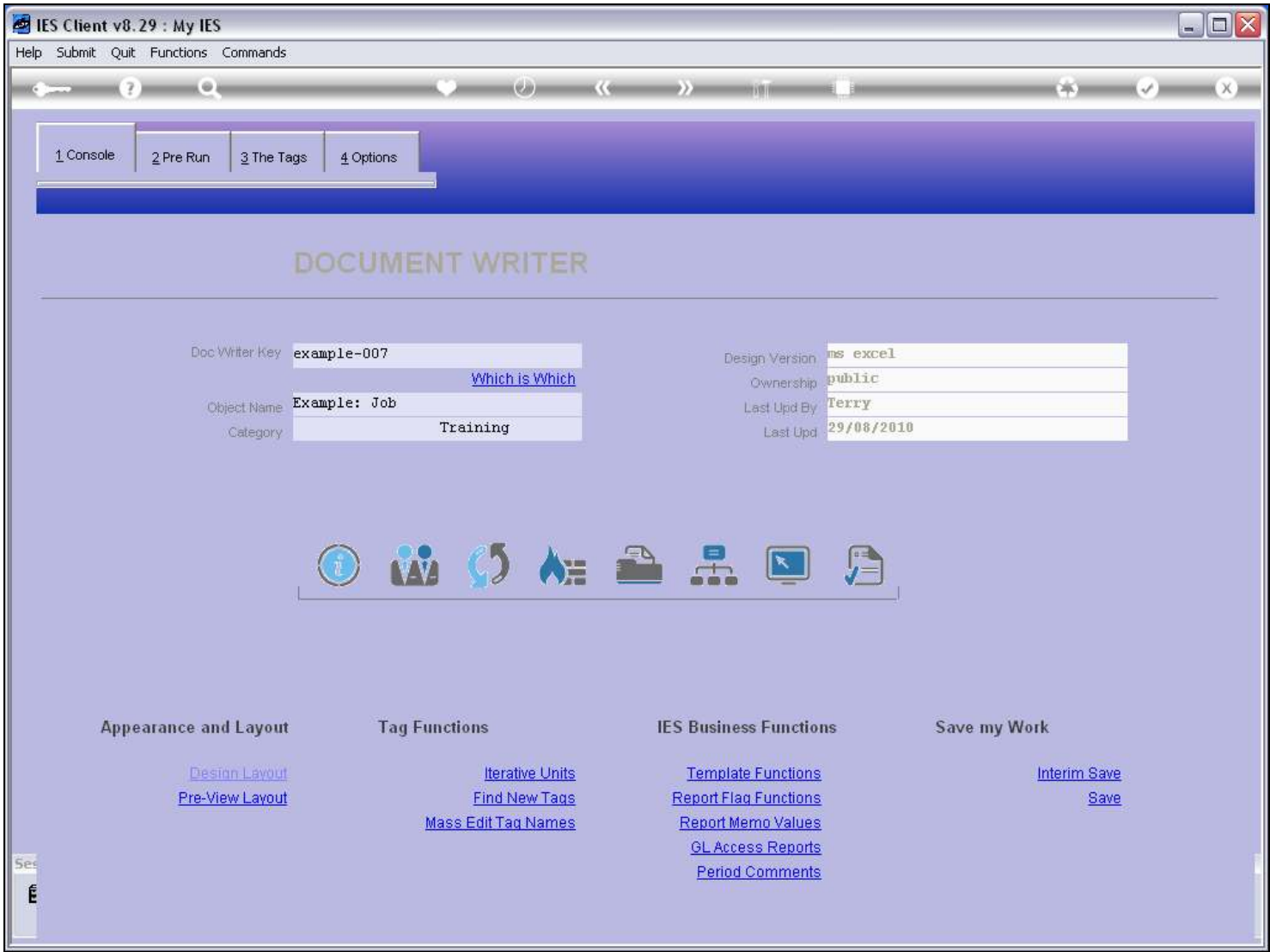
If we perform the Report now, the Life to Date Balance is not showing.

Slide 4 - Slide 4



Slide notes

Slide 5 - Slide 5



Slide notes

Slide 6 - Slide 6

IES Client v8.29 : My IES

Help Submit Quit Functions Commands

1 Console 2 Pre Run 3 The Tags 4 Options

PRE RUN PARAMETERS: - [Pre Run Assist](#)

Pre Run Process:

Results File:

Results Key:

Proceed on Field #:

Conditional Value:

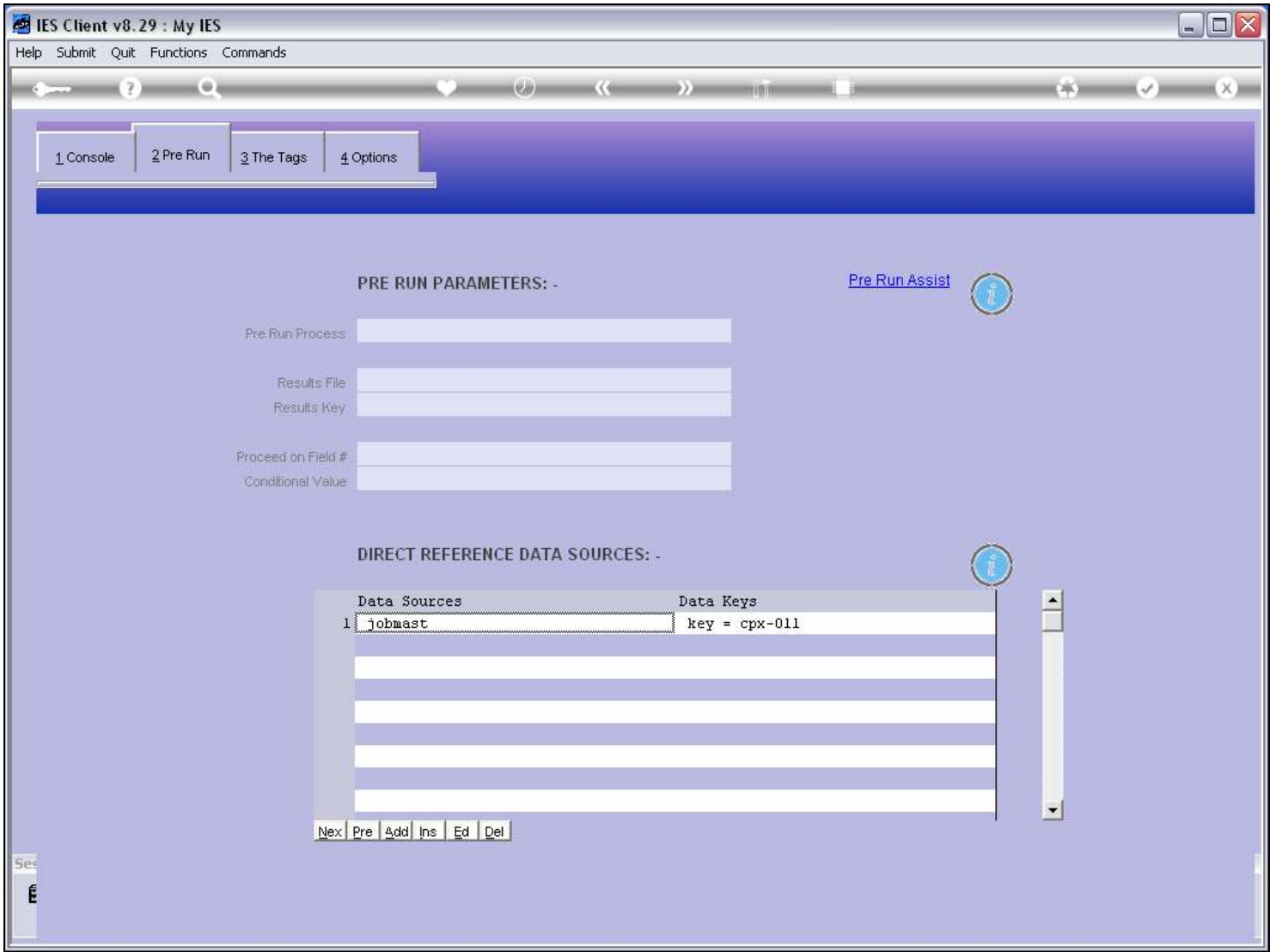
DIRECT REFERENCE DATA SOURCES: -

Data Sources	Data Keys
1 jobmast	key = cpx-011

Slide notes

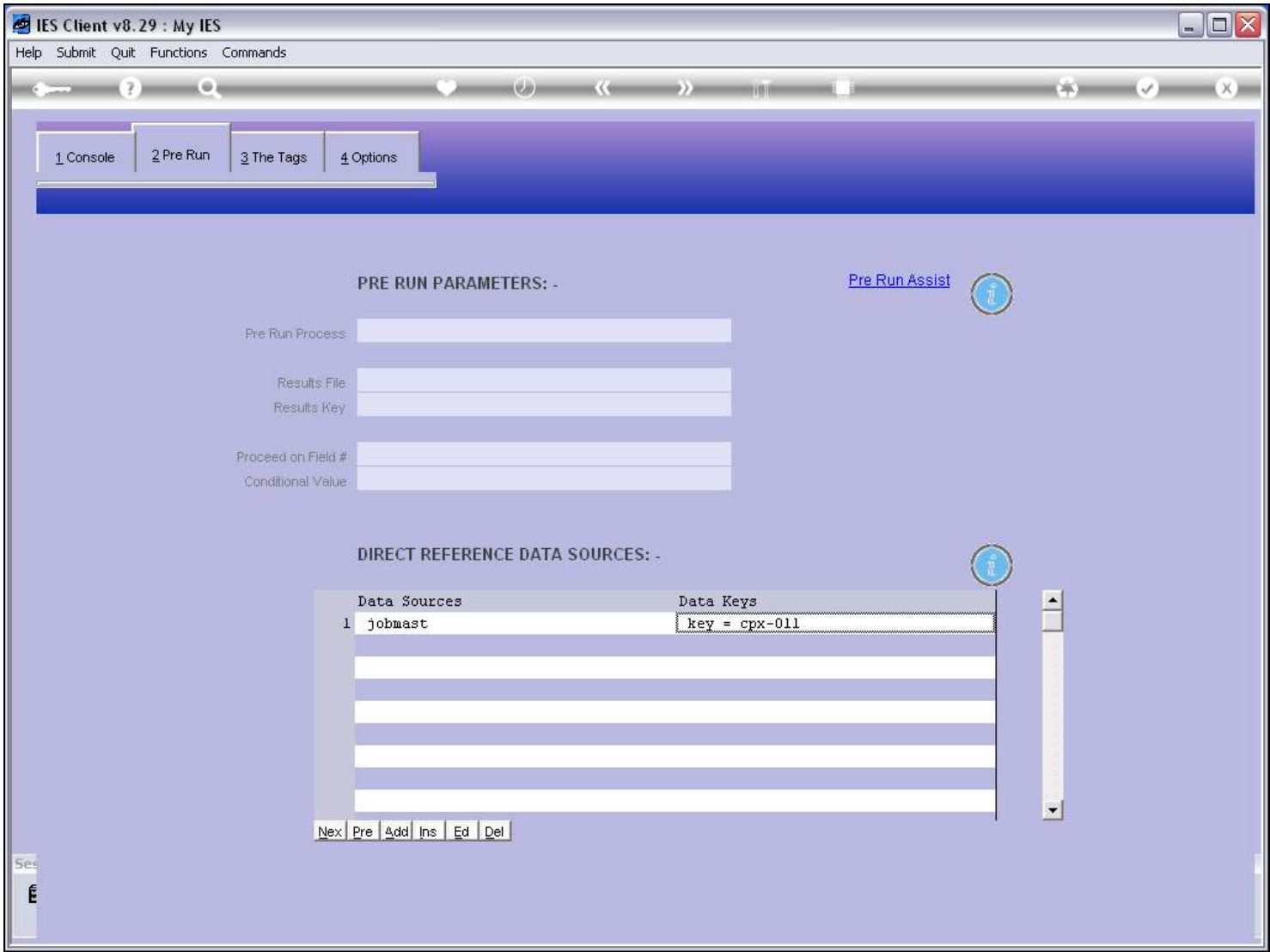
We can only use the 'Numeric Name from Data Source' Template when we have a Data Source listed.

Slide 7 - Slide 7



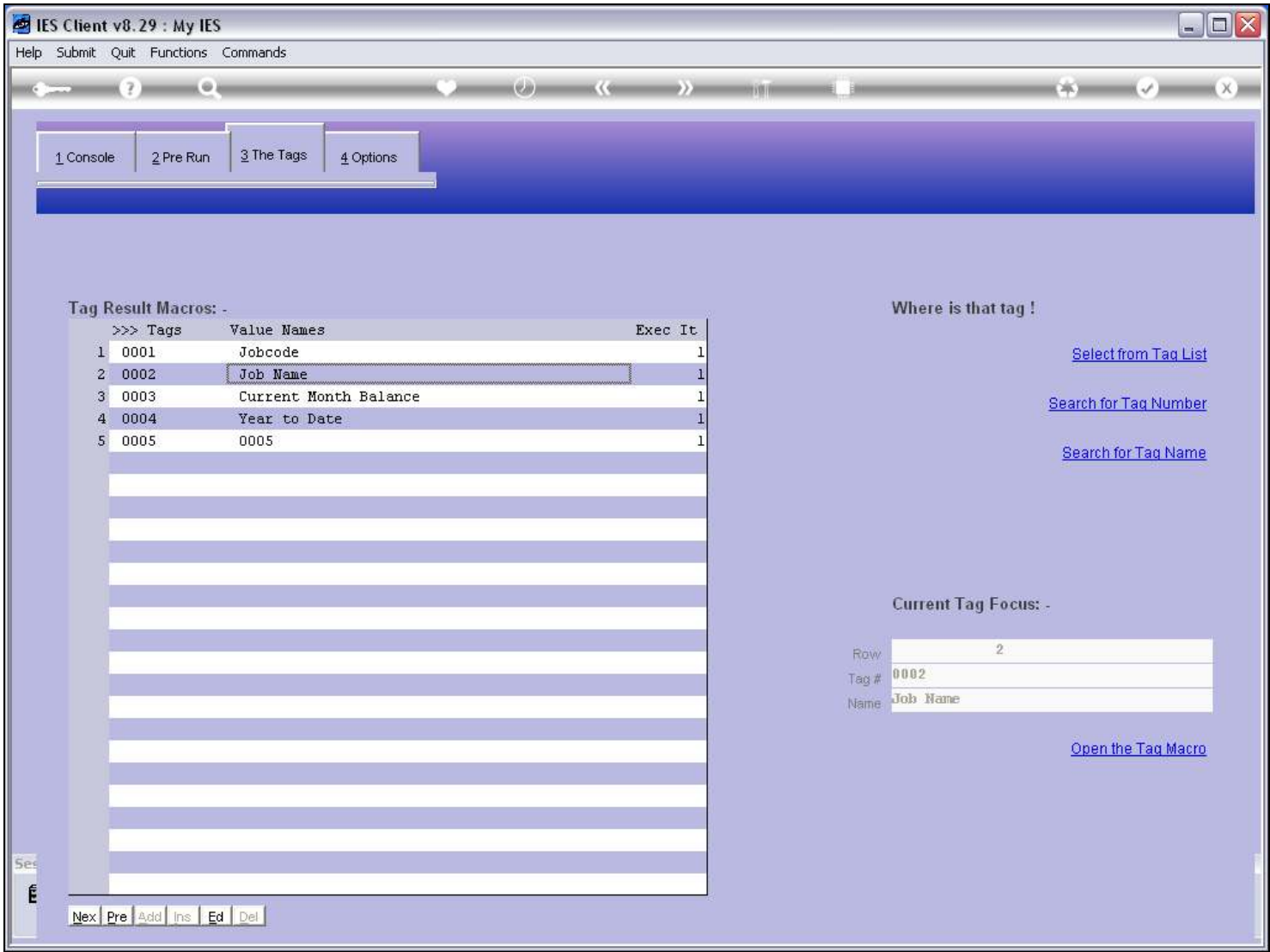
Slide notes

Slide 8 - Slide 8



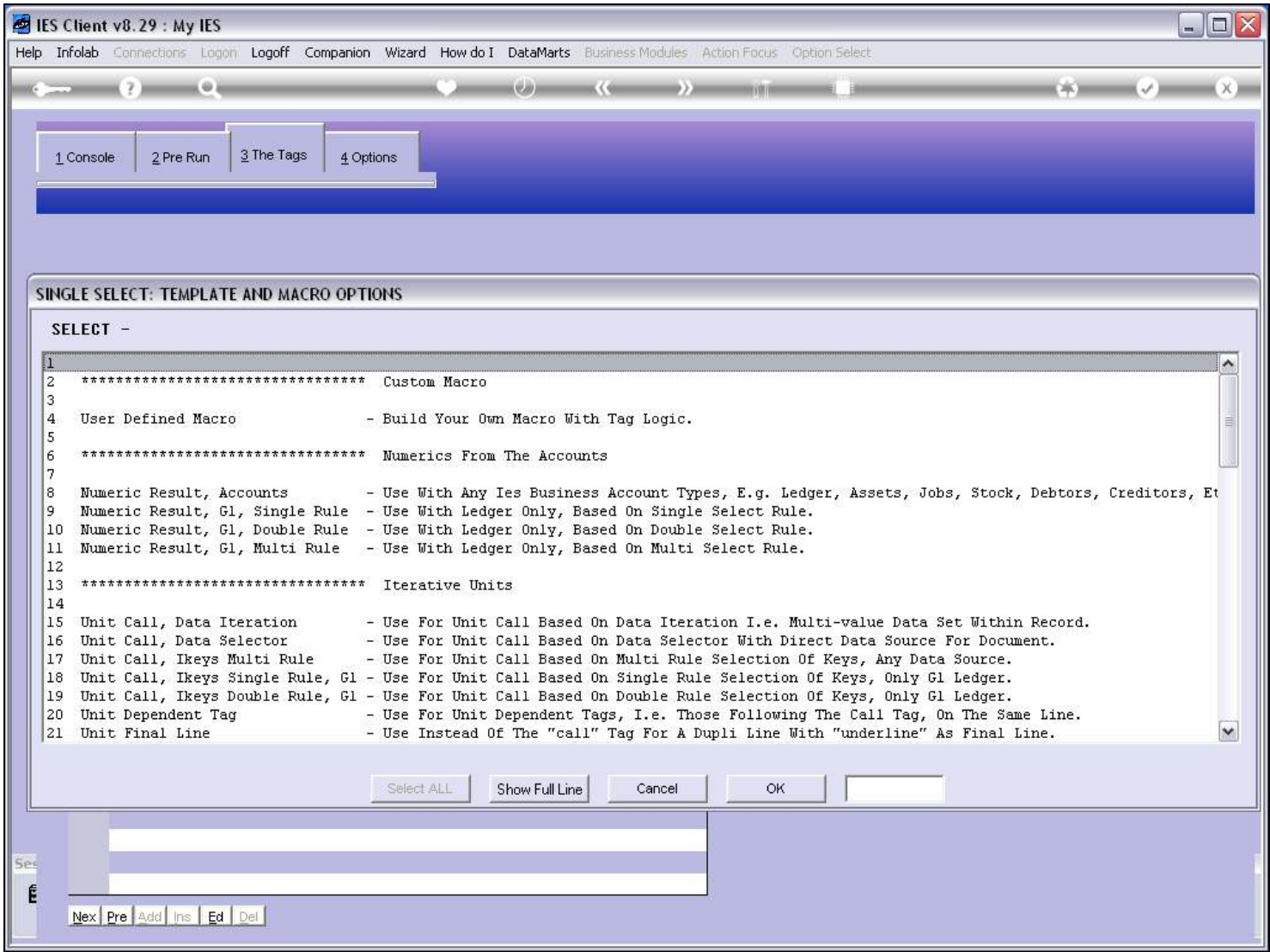
Slide notes

Slide 9 - Slide 9



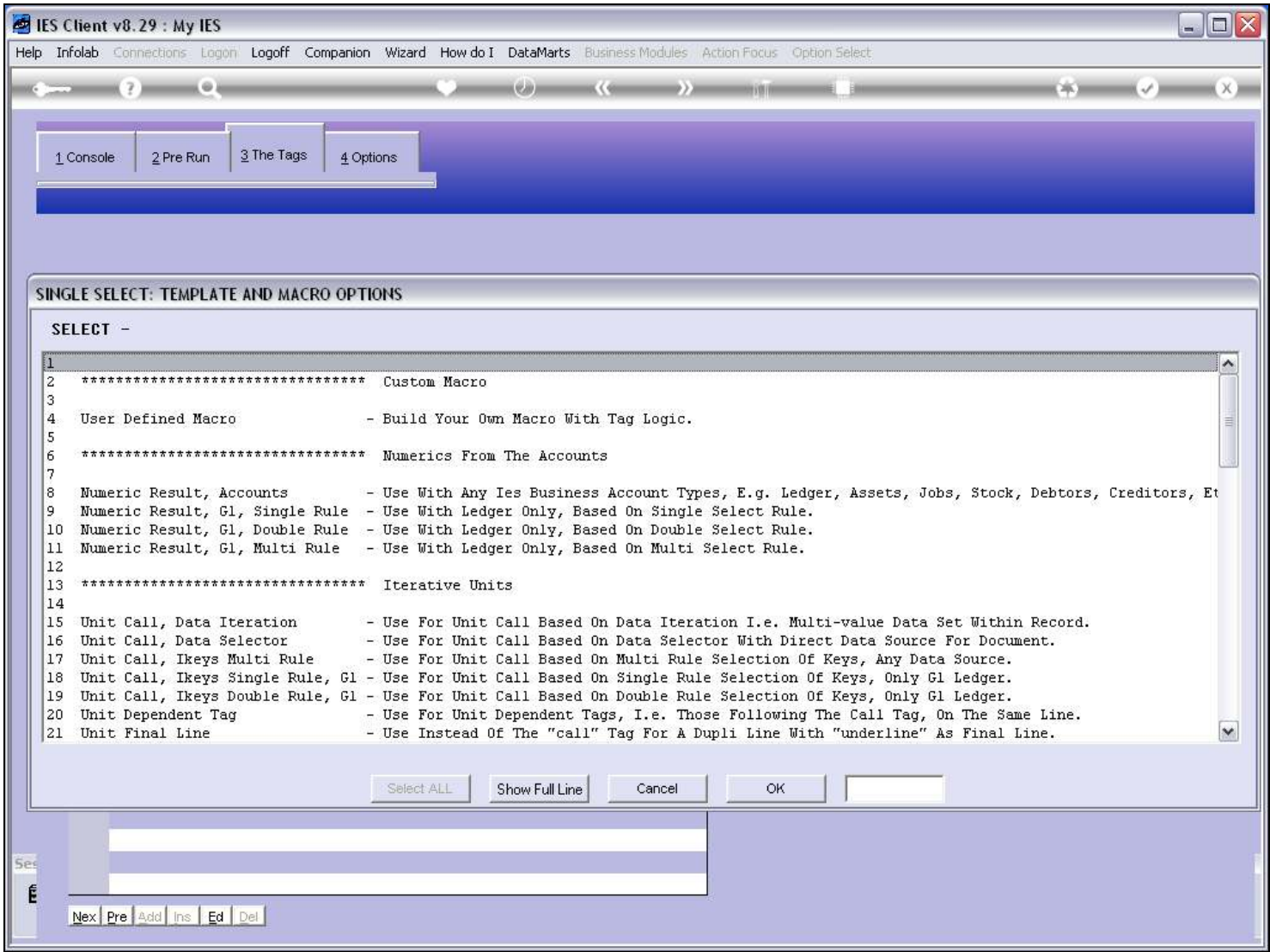
Slide notes

Slide 10 - Slide 10



Slide notes

Slide 11 - Slide 11



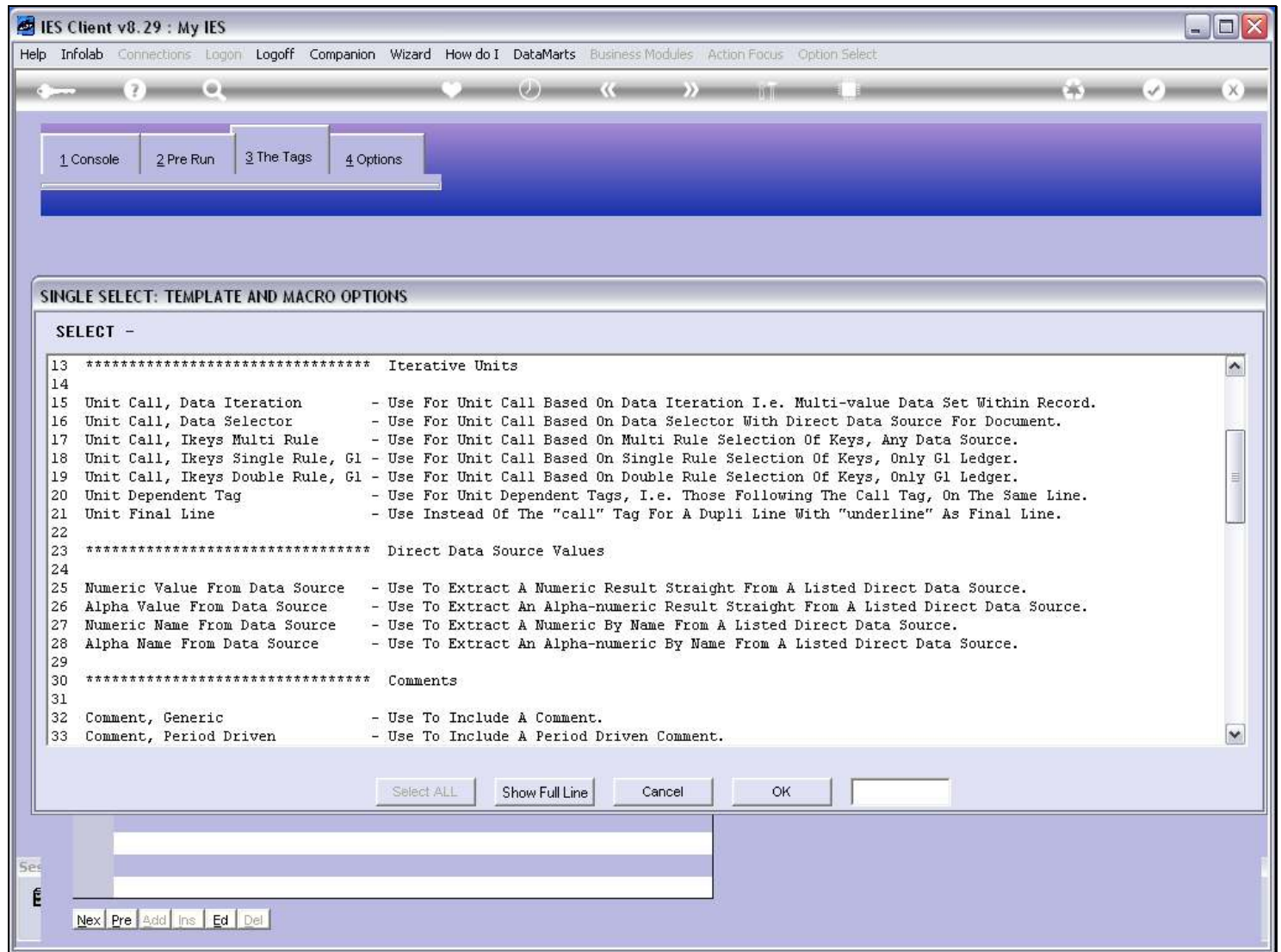
Slide notes

Slide 12 - Slide 12



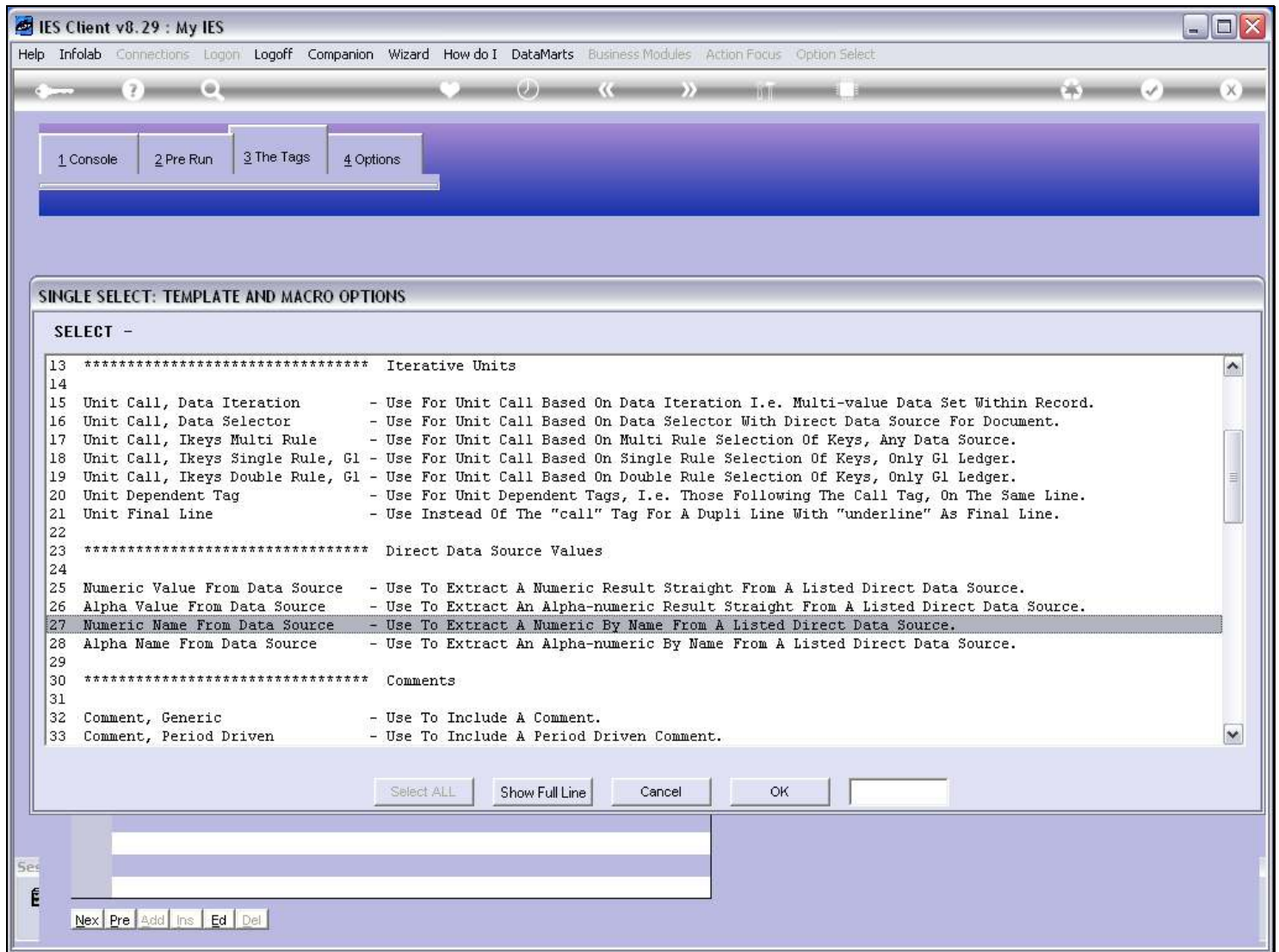
Slide notes

Slide 13 - Slide 13



Slide notes

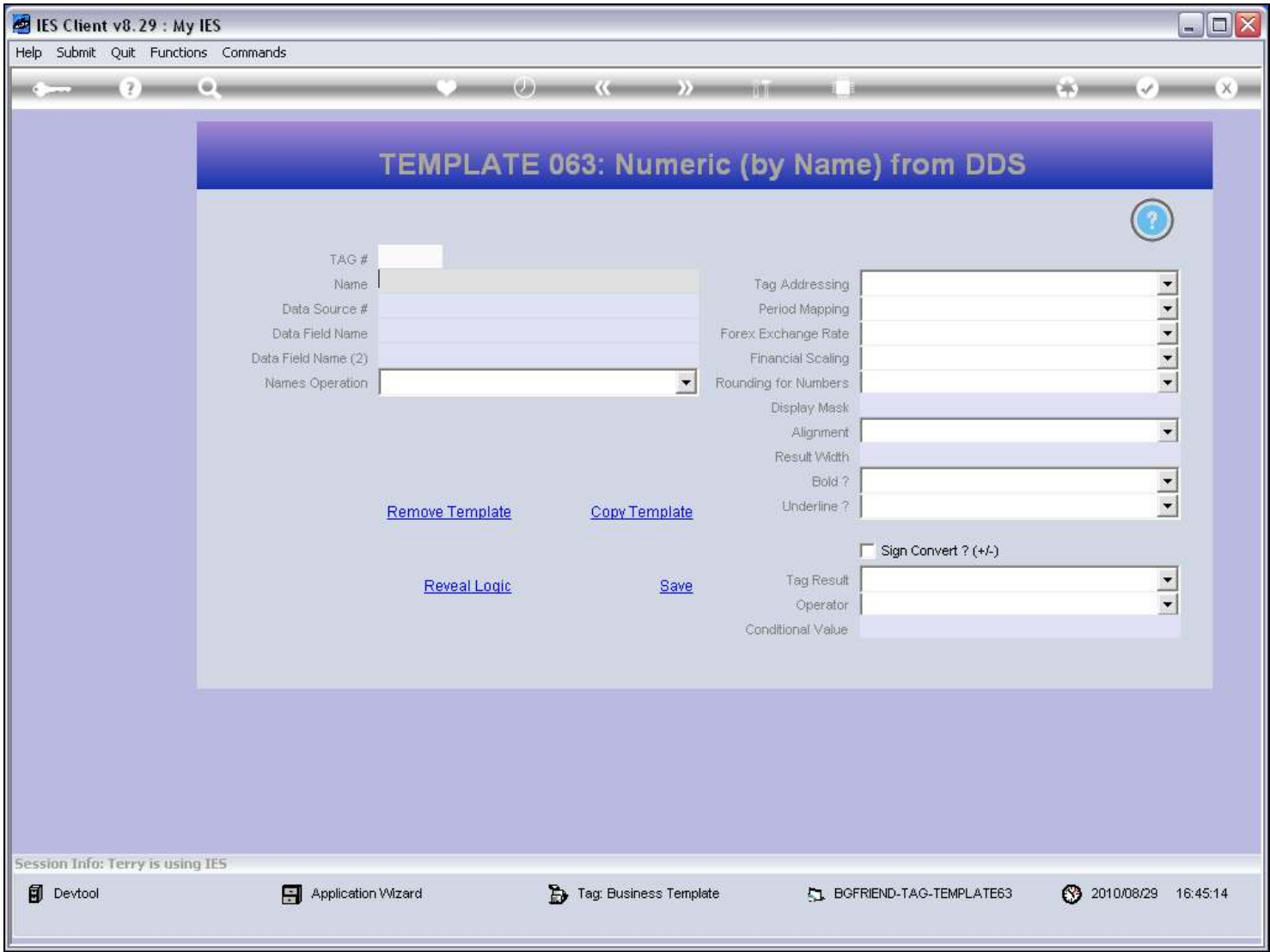
Slide 14 - Slide 14



Slide notes

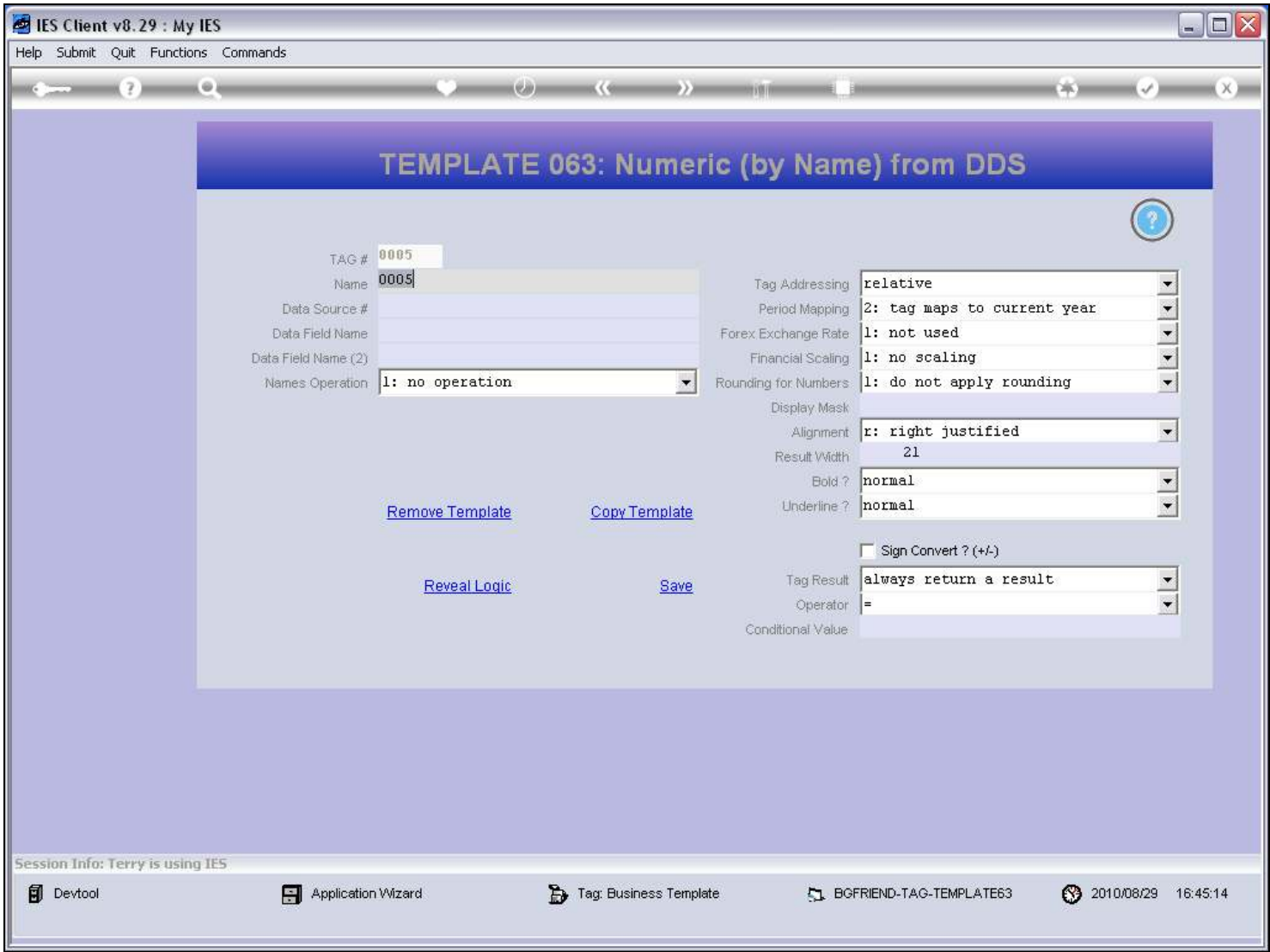
This is the Template.

Slide 15 - Slide 15



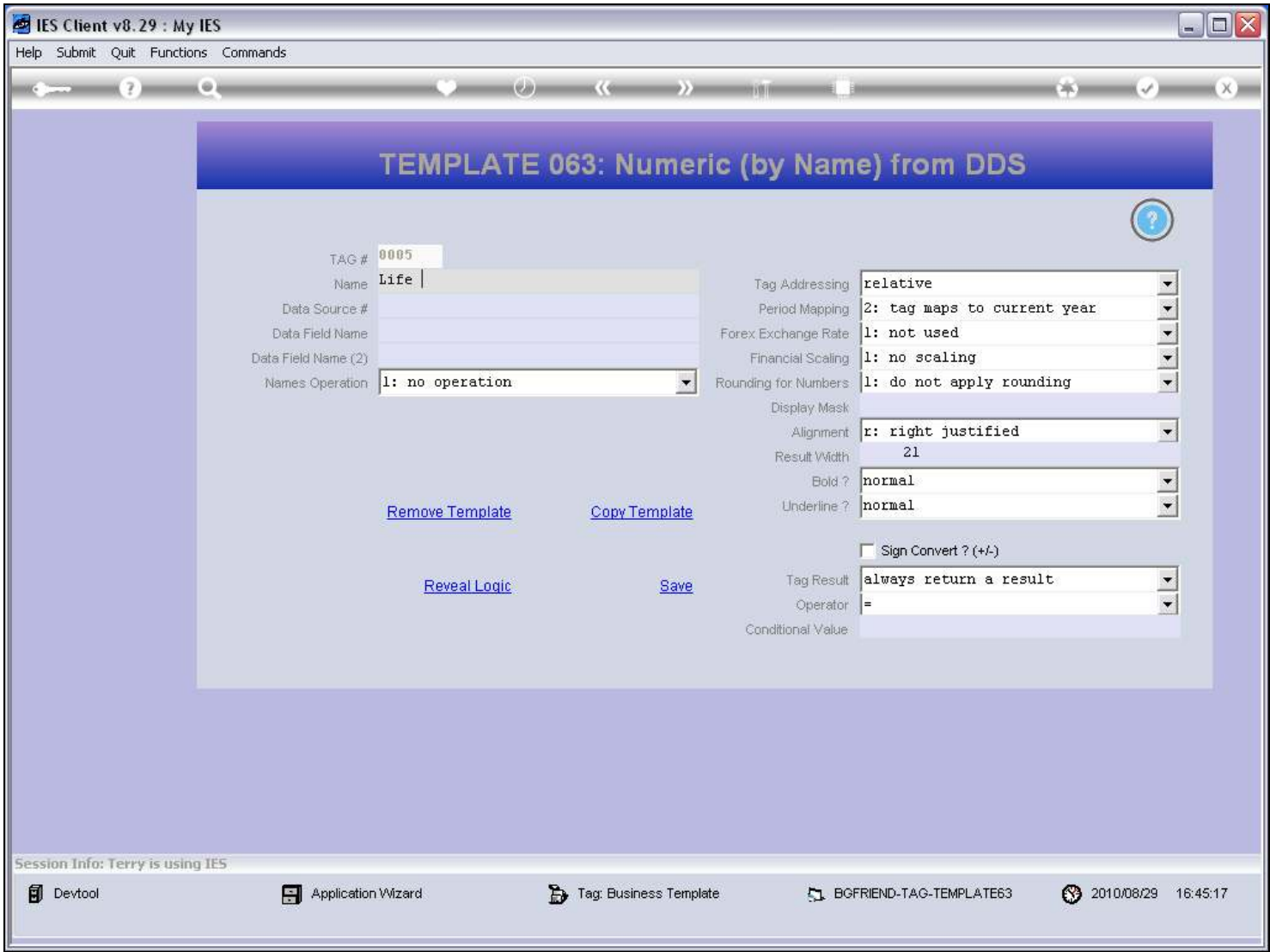
Slide notes

Slide 16 - Slide 16



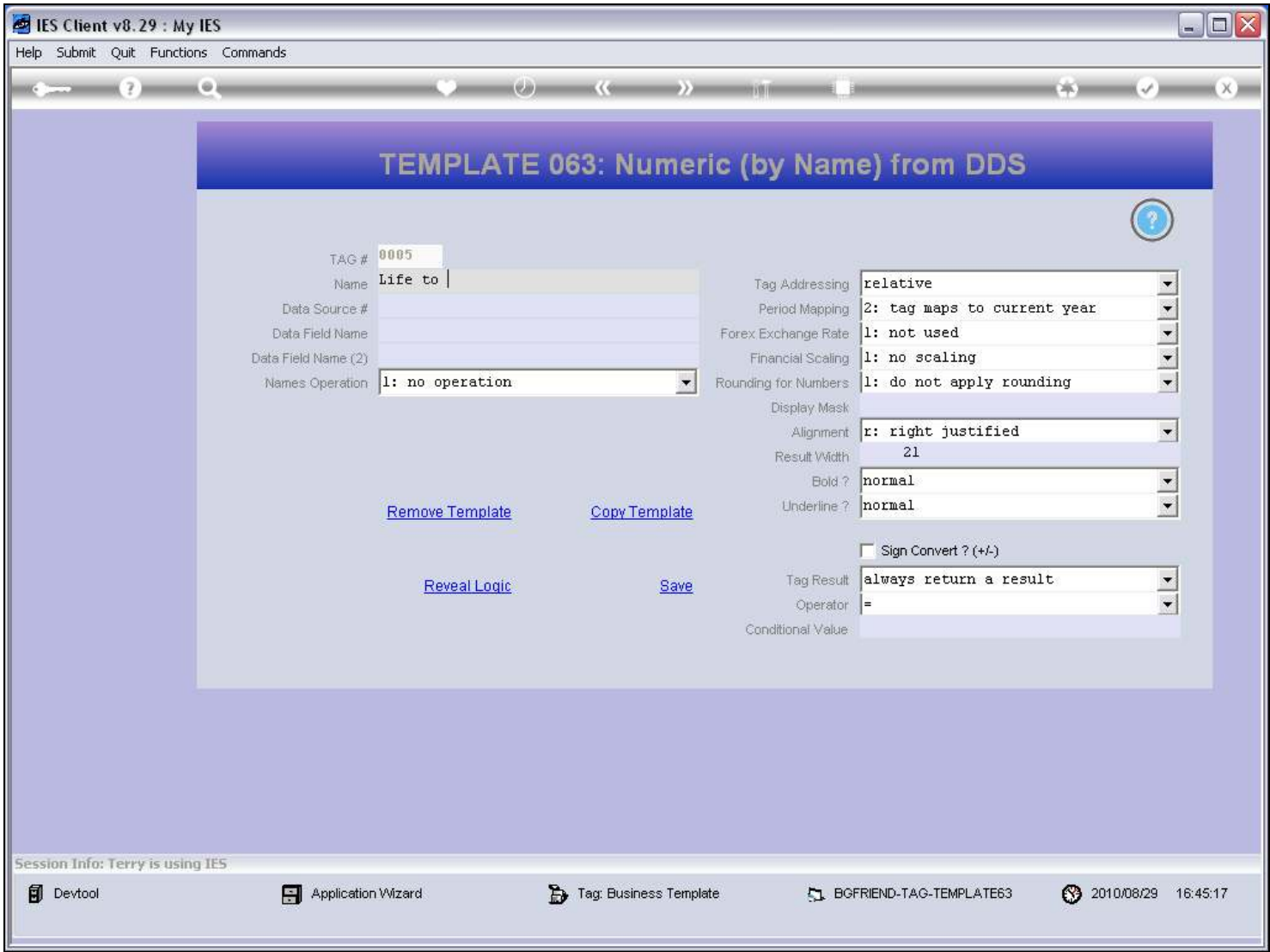
Slide notes

Slide 17 - Slide 17



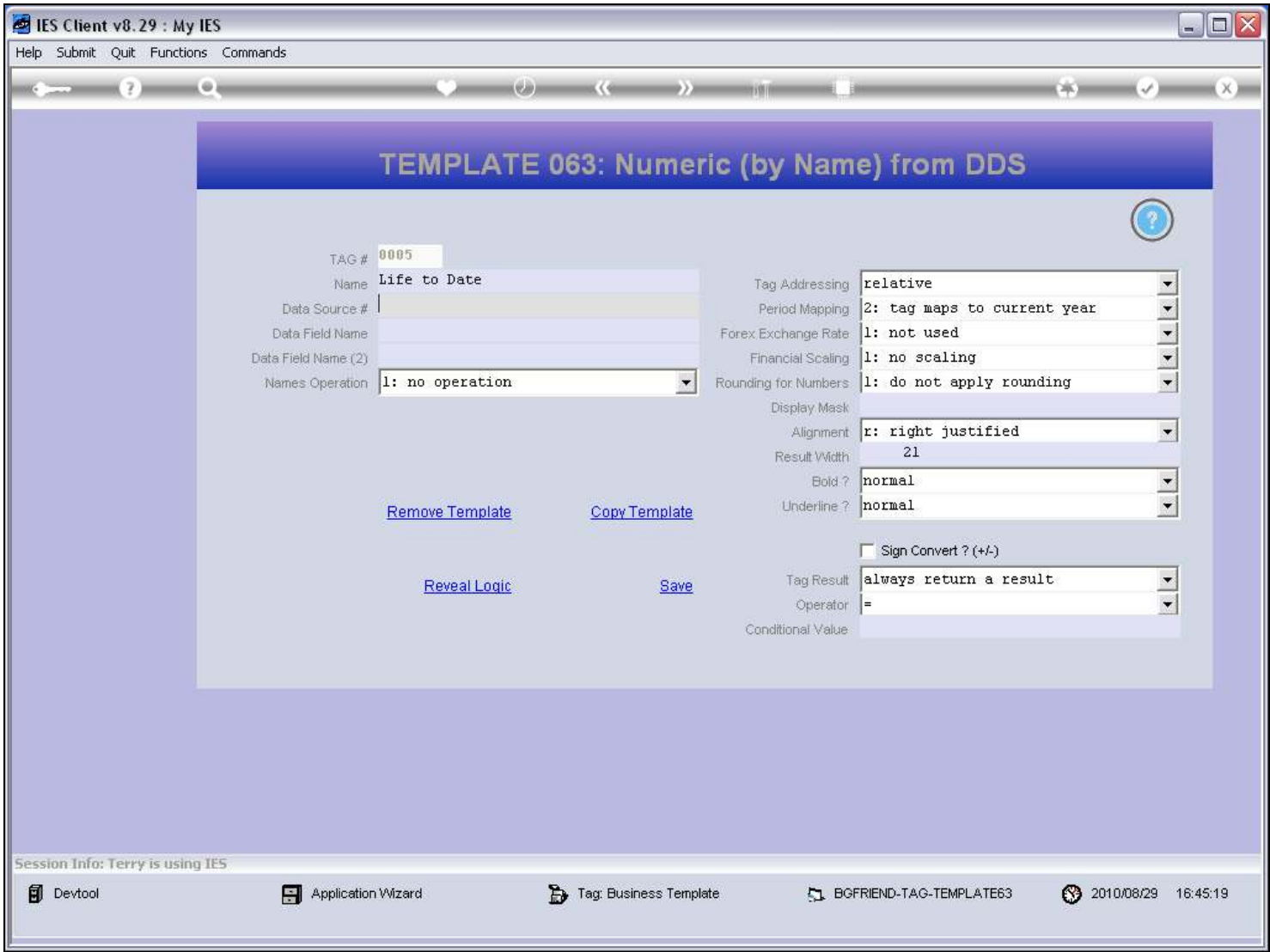
Slide notes

Slide 18 - Slide 18



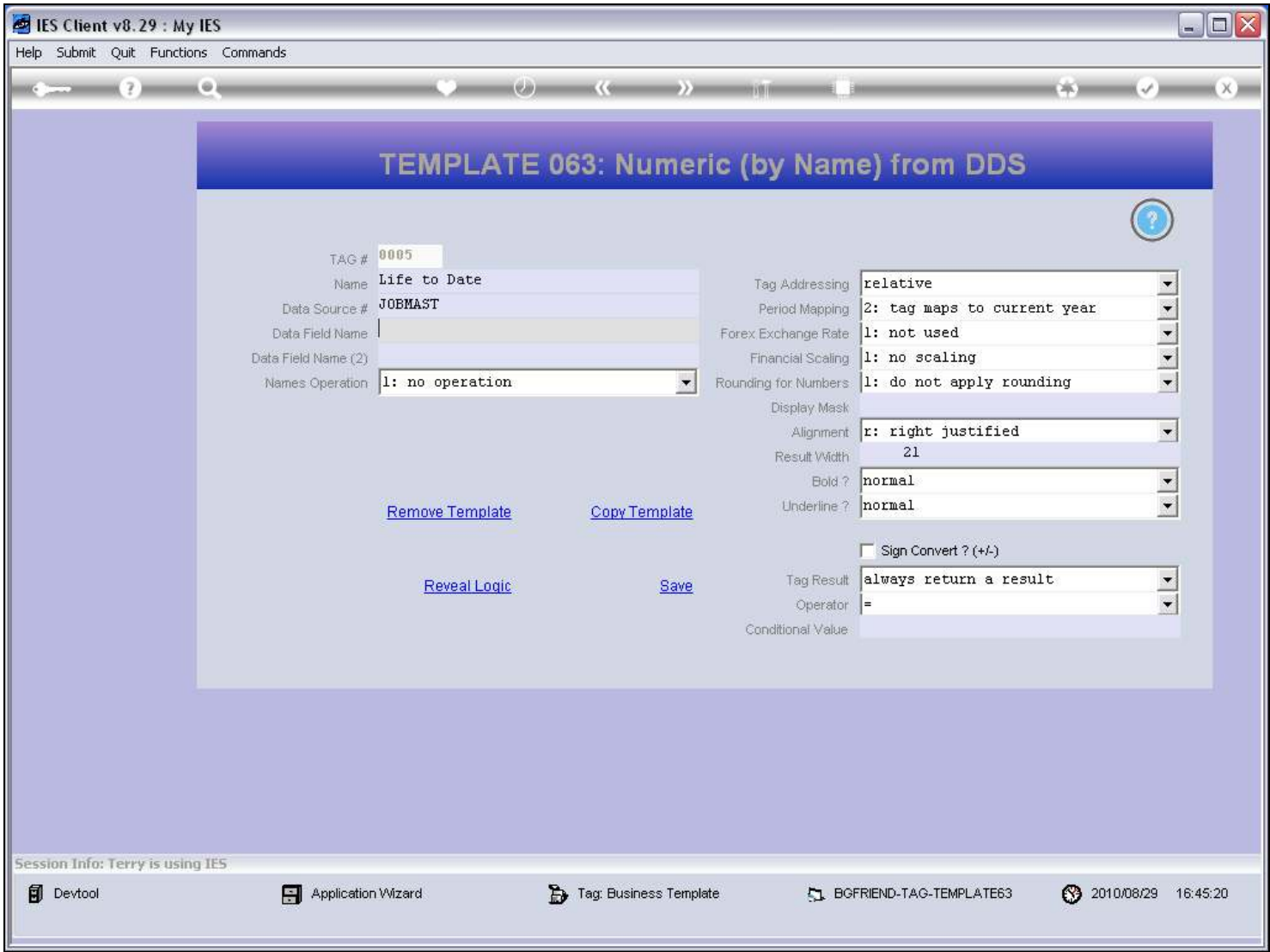
Slide notes

Slide 19 - Slide 19



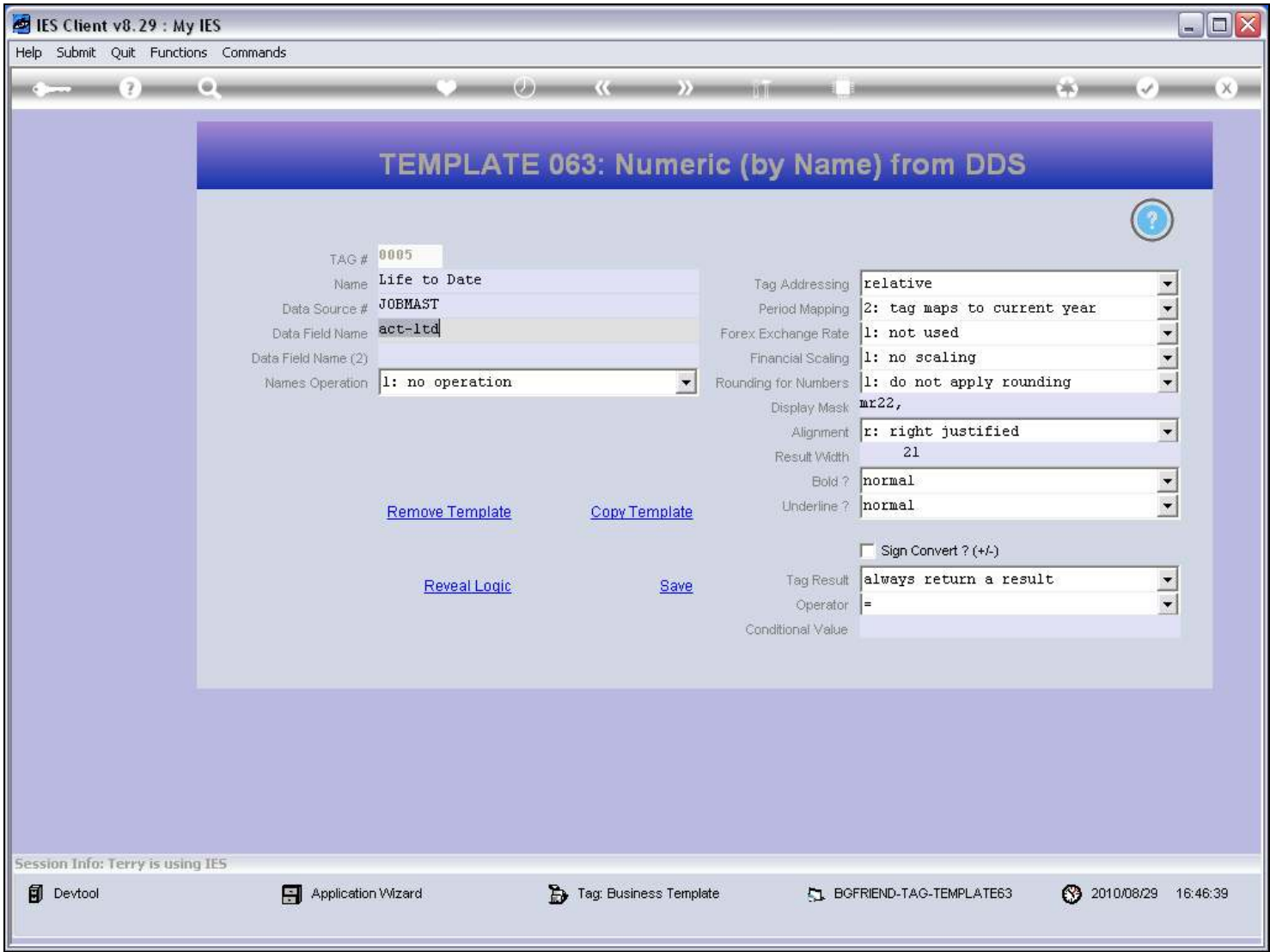
Slide notes

Slide 20 - Slide 20



Slide notes

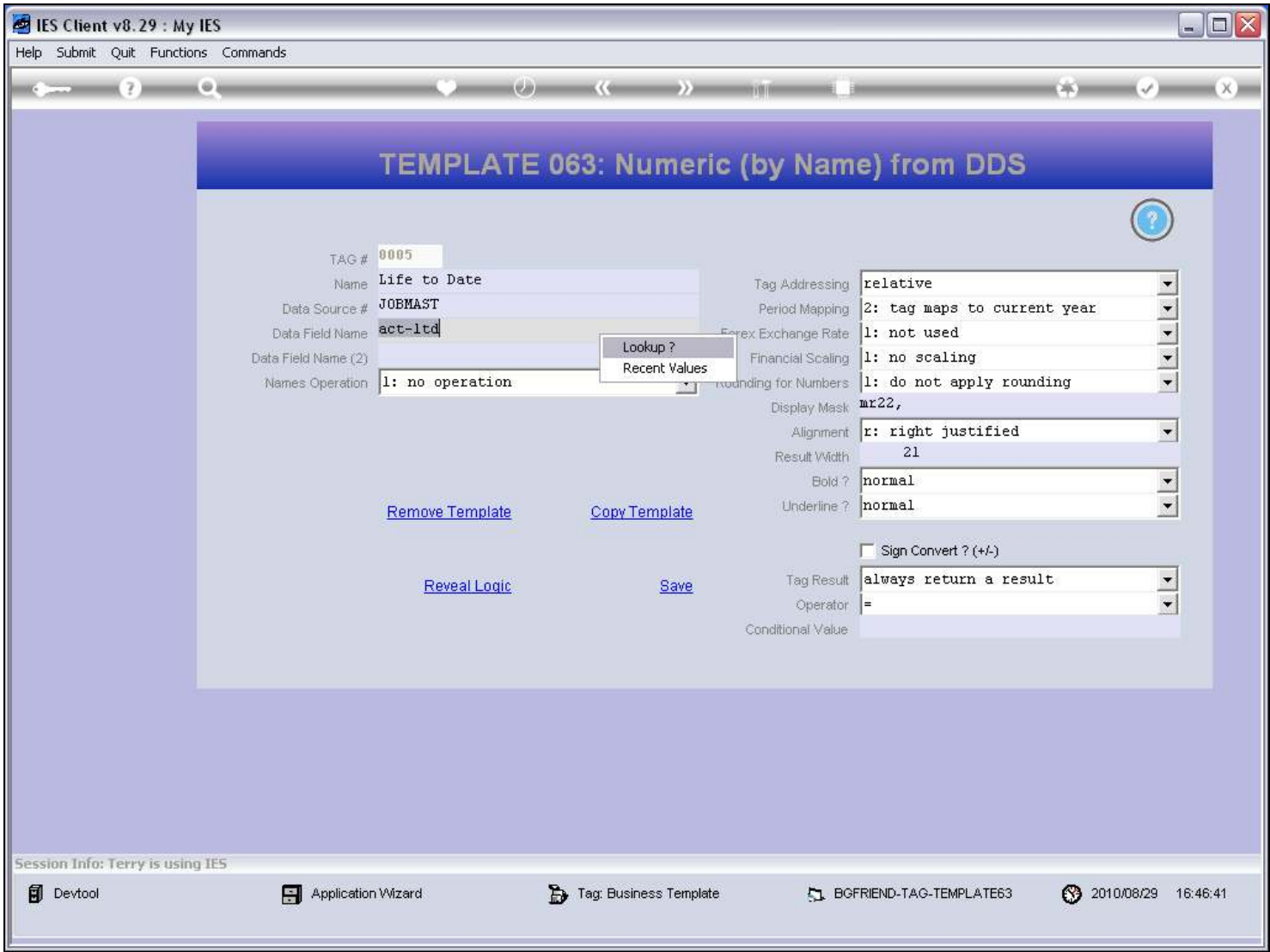
Slide 21 - Slide 21



Slide notes

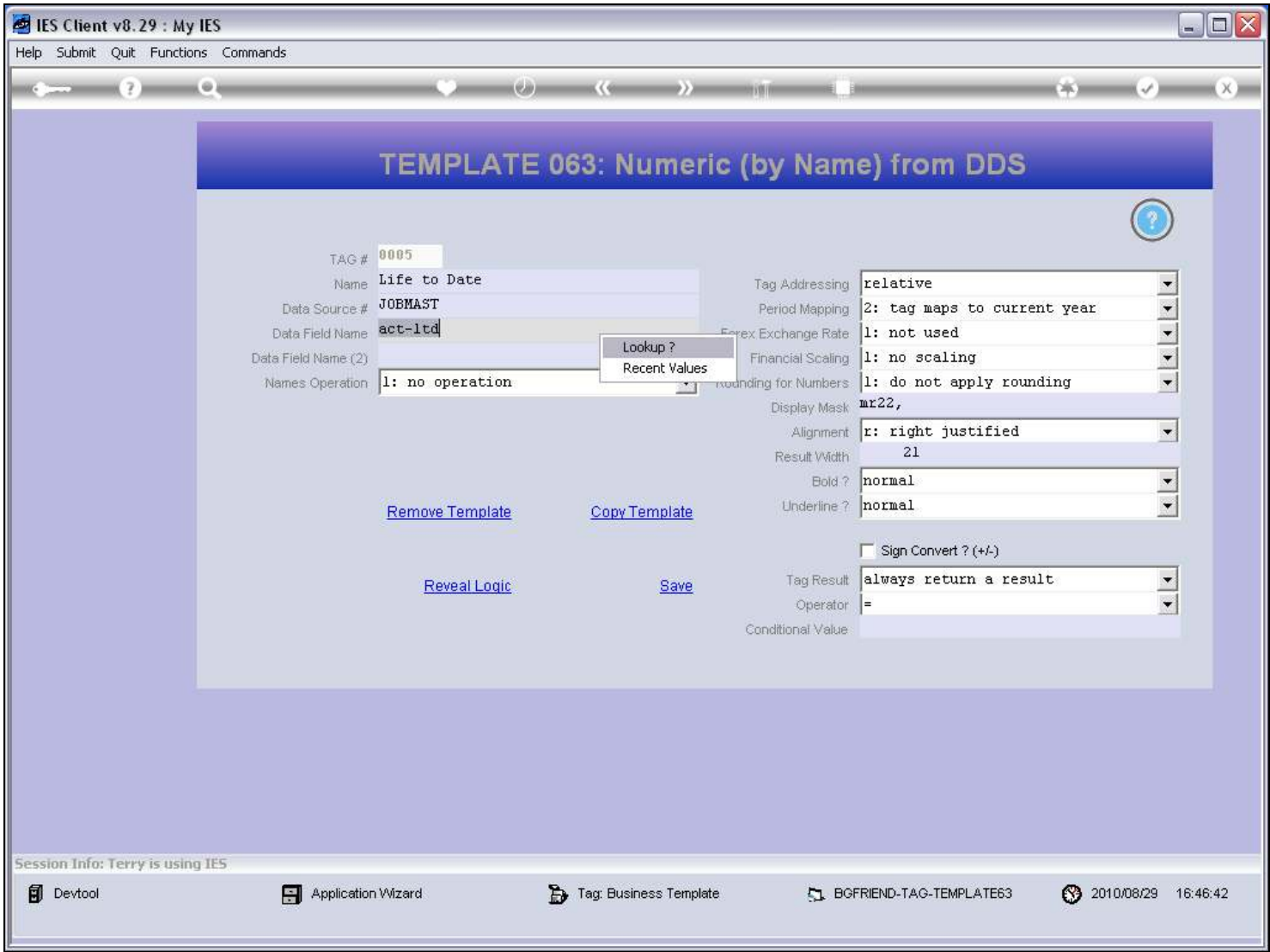
If we do not already know the Data Name, then we can use the lookup to find it.

Slide 22 - Slide 22



Slide notes

Slide 23 - Slide 23



Slide notes

Slide 24 - Slide 24

IES Client v8.29 : My IES

HelpInfolabConnectionsLoginLogoutCompanionWizardHow do IDataMartsBusiness ModulesAction FocusOption Select

TEMPLATE 063: Numeric (by Name) from DDS

TAG #0005

SINGLE SELECT: *OBJECT NAME (DICT) :ATT:STRUCTURE :HEADER (PROM)

SELECT ONLY 1

1	Act-bf	0	Brought Fwd
2	Act-bf-cty	0	Brought Fwd
3	Act-bf-cty-acod	0	Acod : Brought Fwd
4	Act-bf-cty-any	0	Any : Brought Fwd
5	Act-bf-cty-apd	0	Apd : Brought Fwd
6	Act-bf-cty-cap	0	Cap : Brought Fwd
7	Act-bf-cty-capr	0	Capr : Brought Fwd
8	Act-bf-cty-fue	0	Fue : Brought Fwd
9	Act-bf-cty-ins	0	Ins : Brought Fwd
10	Act-bf-cty-lab	0	Lab : Brought Fwd
11	Act-bf-cty-lab1	0	Lab1 : Brought Fwd
12	Act-bf-cty-lab2	0	Lab2 : Brought Fwd
13	Act-bf-cty-lab3	0	Lab3 : Brought Fwd
14	Act-bf-cty-mat	0	Mat : Brought Fwd
15	Act-bf-cty-mod	0	Mod : Brought Fwd
16	Act-bf-cty-modc	0	Modc : Brought Fwd
17	Act-bf-cty-model	0	Model : Brought Fwd
18	Act-bf-cty-modiv	0	Modiv : Brought Fwd
19	Act-bf-cty-modj	0	Modj : Brought Fwd
20	Act-bf-cty-modpo	0	Modpo : Brought Fwd
21	Act-bf-cty-modret	0	Modret : Brought Fwd

Select ALL

Show Full Line

Cancel

OK

Session Info: Terry is using IES

Devtool

Application Wizard

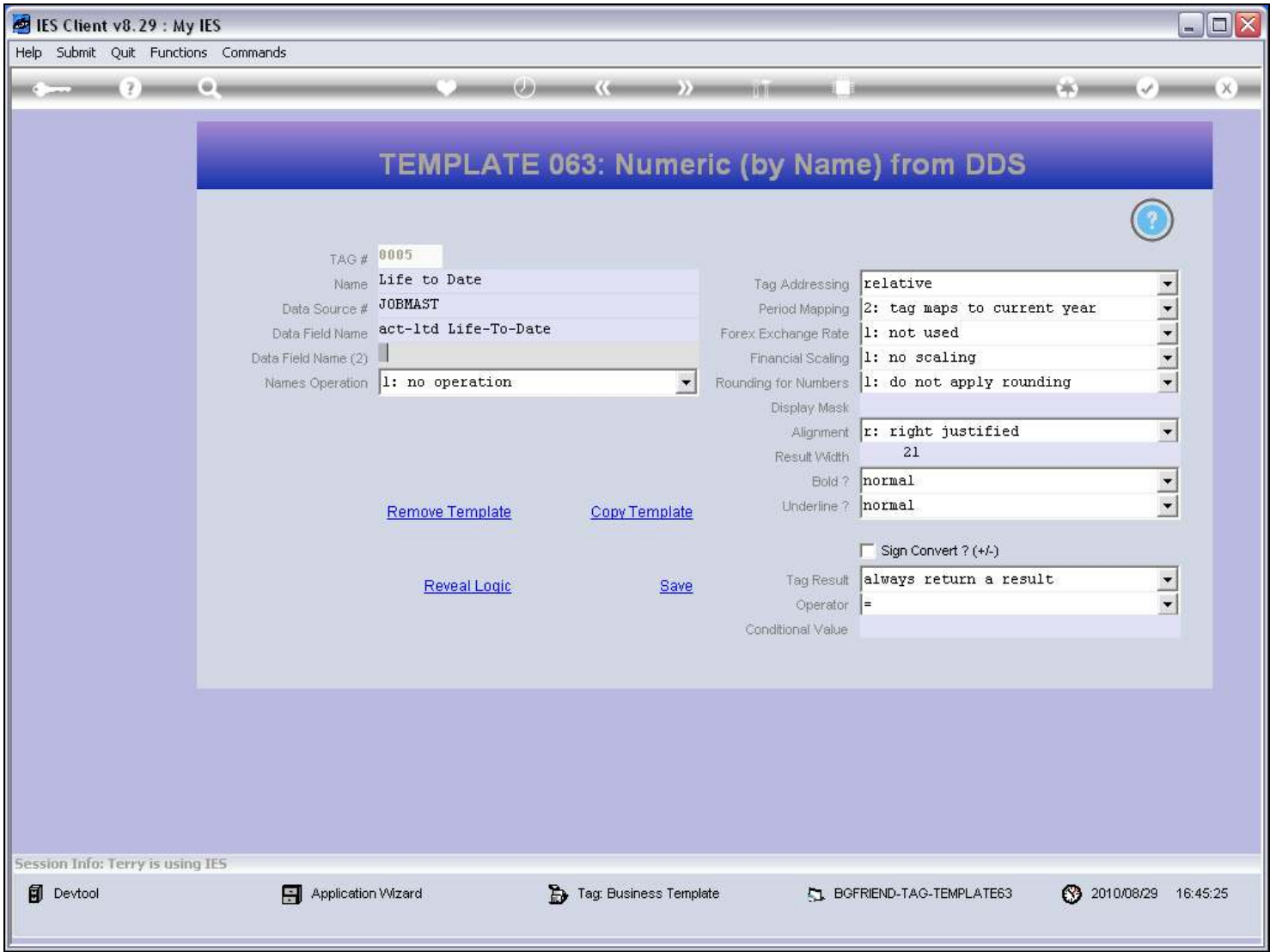
Tag: Business Template

BGFRIEND-TAG-TEMPLATE63

2010/08/29 16:46:43

Slide notes

Slide 25 - Slide 25



Slide notes

This Template also allows the optional use of a 2nd Data Name with an operation on the 2 results.

Slide 26 - Slide 26

IES Client v8.29 : My IES

Help Submit Quit Functions Commands

TEMPLATE 063: Numeric (by Name) from DDS

TAG #
 Name
 Data Source #
 Data Field Name
 Data Field Name (2)
 Names Operation

[Remove Template](#) [Copy Template](#)
[Reveal Logic](#) [Save](#)

Tag Addressing
 Period Mapping
 Forex Exchange Rate
 Financial Scaling
 Rounding for Numbers
 Display Mask
 Alignment
 Result Width
 Bold ?
 Underline ?
☐ Sign Convert ? (+/-)
 Tag Result
 Operator
 Conditional Value

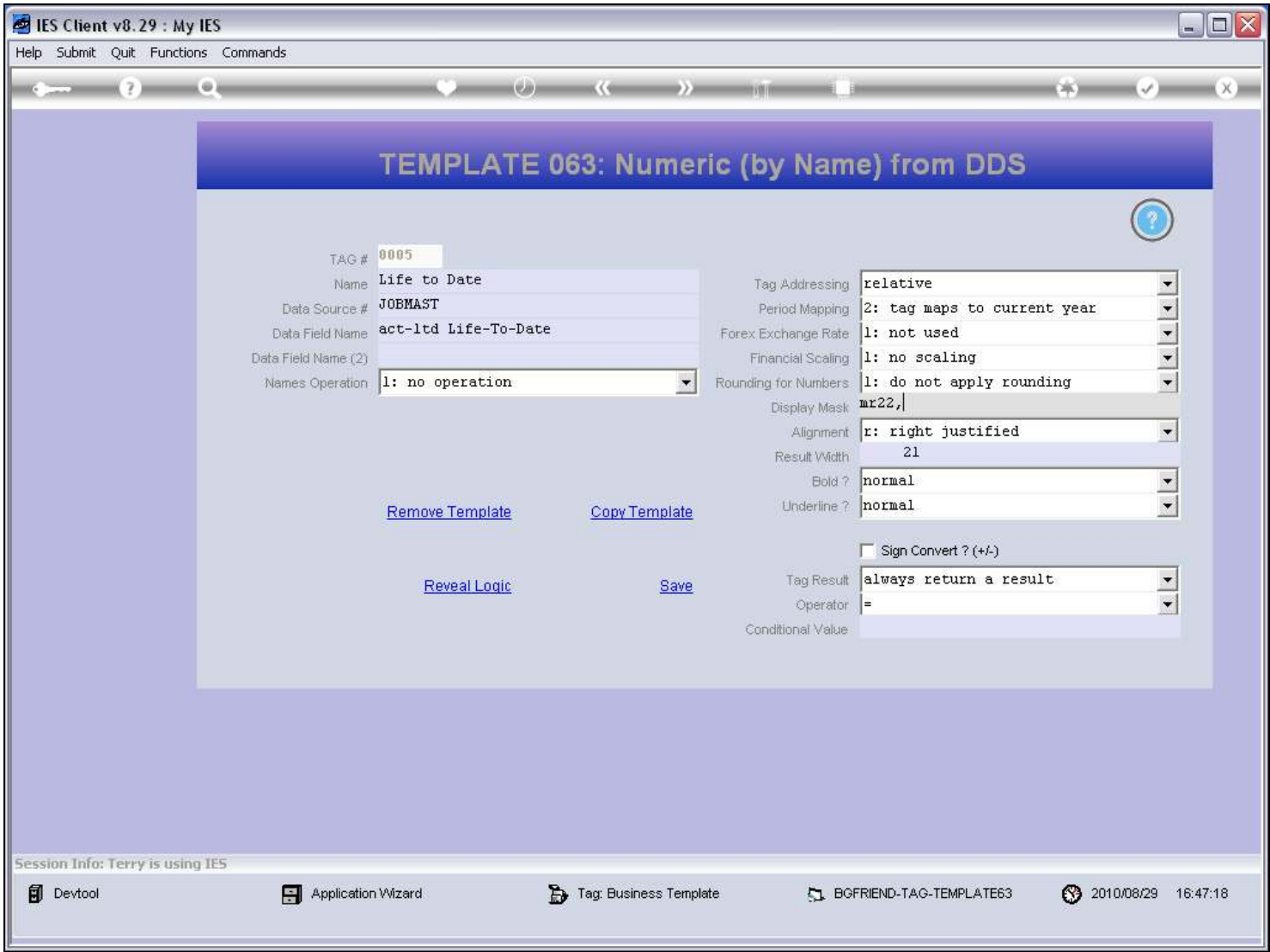
Session Info: Terry is using IES

Devtool Application Wizard Tag: Business Template BGFRIEND-TAG-TEMPLATE63 2010/08/29 16:45:30

Slide notes

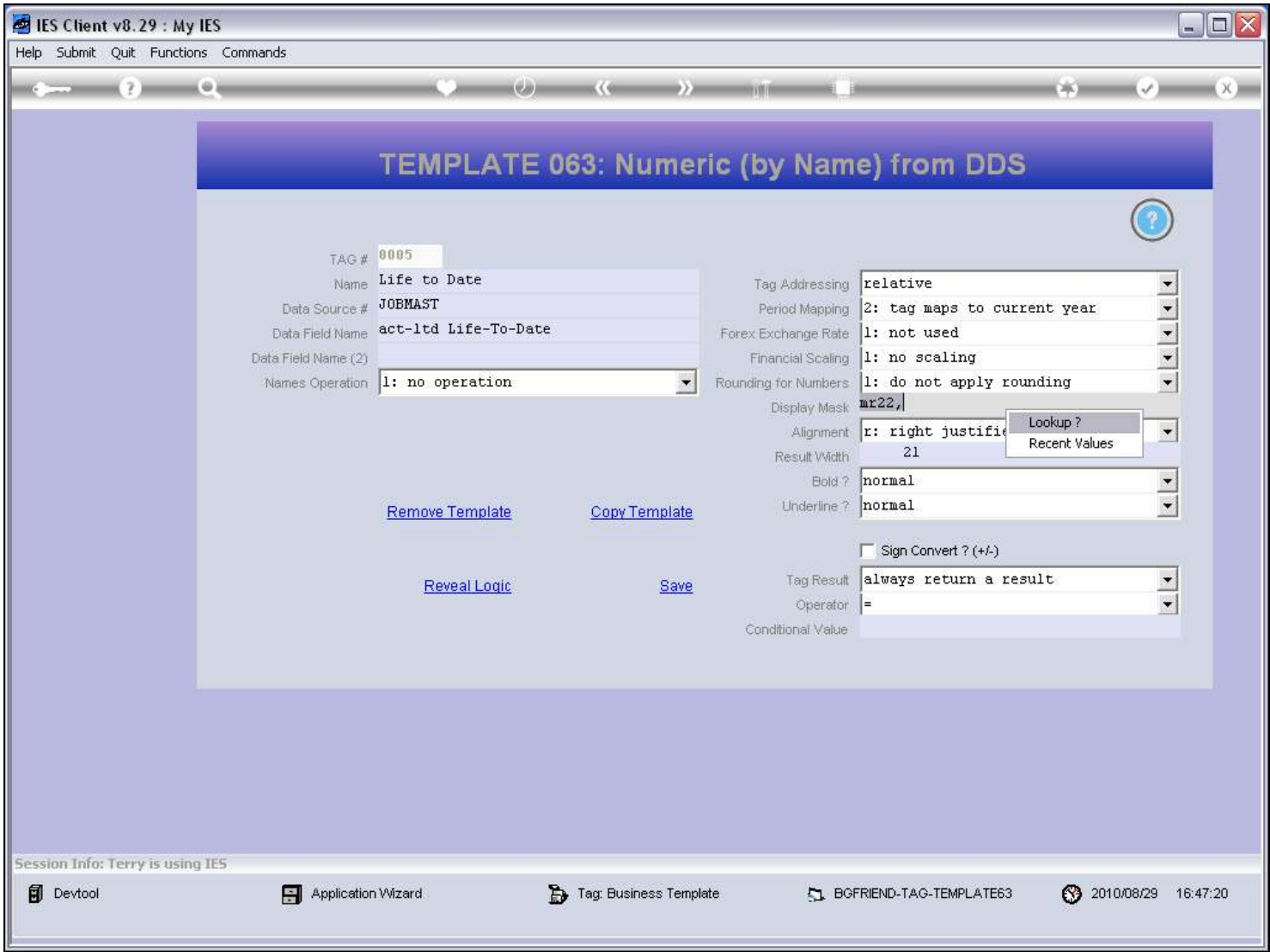
The Display Mask we want to use with our Number can be looked up or just typed if we know it.

Slide 27 - Slide 27



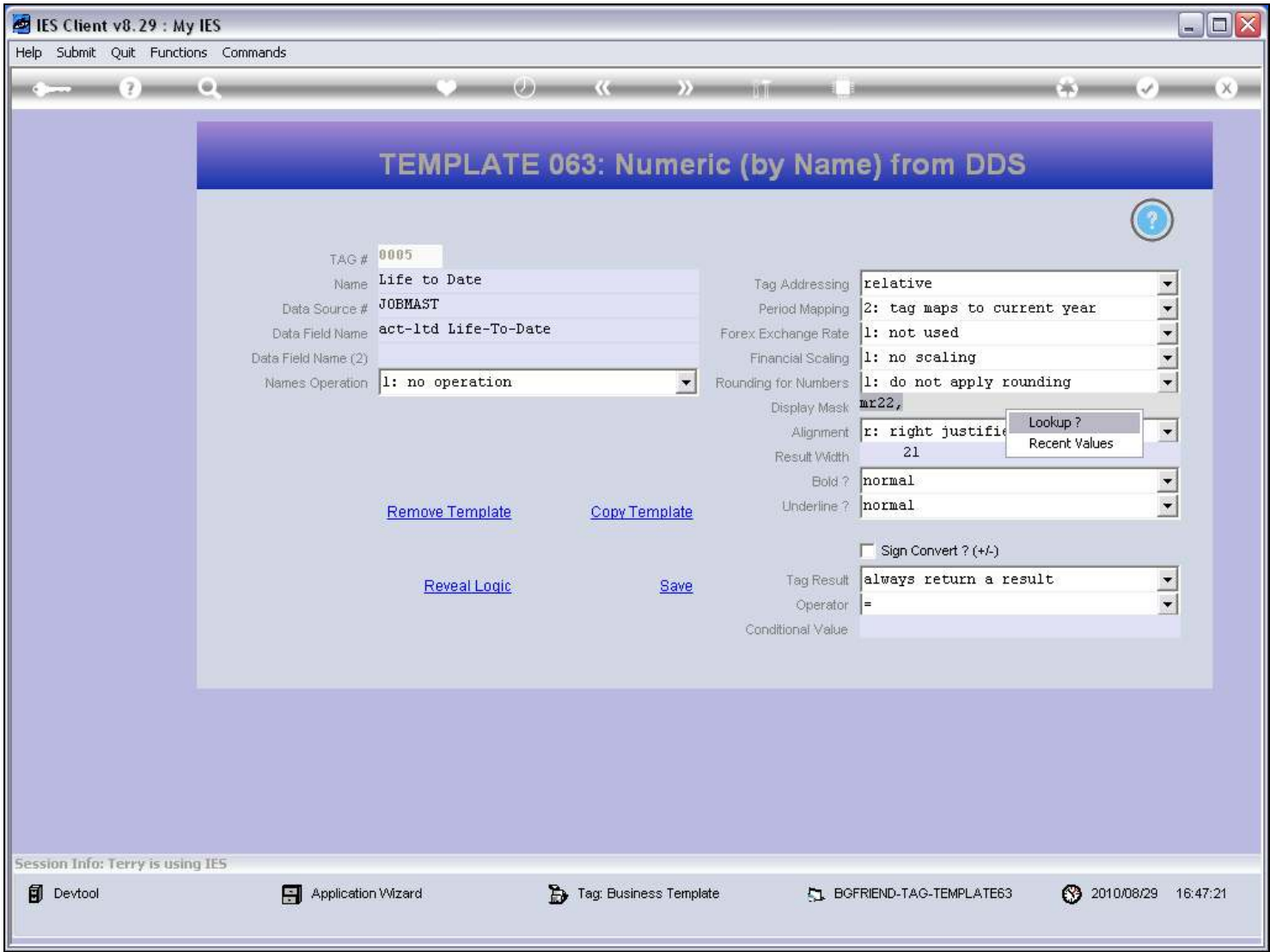
Slide notes

Slide 28 - Slide 28



Slide notes

Slide 29 - Slide 29



Slide notes

Slide 30 - Slide 30

IES Client v8.29 : My IES

Help Infolab Connections Logon Logoff Companion Wizard How do I DataMarts Business Modules Action Focus Option Select

TEMPLATE 063: Numeric (by Name) from DDS

TAG # 0005

SINGLE SELECT: COMMON CONVERSIONS

SELECT 1

1	Data	Value	Translated From File
2	Date	15582	Like 29/08/2010
3	Date	15582	Like 29/08/10
4	Date	15582	Like 29 Aug 2010
5	Date	15582	Like 2010
6	Time	60441	Like 16:47:21
7	Digits Only	Ab23c5ee7	Like 2357
8	Alphas Only	Ab23c5ee7	Like Abcee
9	Lead Capital Surname	Like	Surname
10	Upper Case My Name	Like	My Name
11	Lower Case My Name	Like	My Name
12	700000	Like 700000	Mr
13	700000	Like 700,000	Mr,
14	700000	Like 70000	Mr01
15	700000	Like 700000.0	Mr10
16	700000	Like 70000.0	Mr11
17	700000	Like 70,000	Mr01,
18	700000	Like 700,000.0	Mr10,
19	700000	Like 70,000.0	Mr11,
20	-990000	Like -99,000	Mr01,e
21	-990000	Like -990,000.0	Mr10,e

Select ALL

Show Full Line

Cancel

OK

to current year

ly rounding

cified

(+/-)

a result

Session Info: Terry is using IES

Devtool

Application Wizard

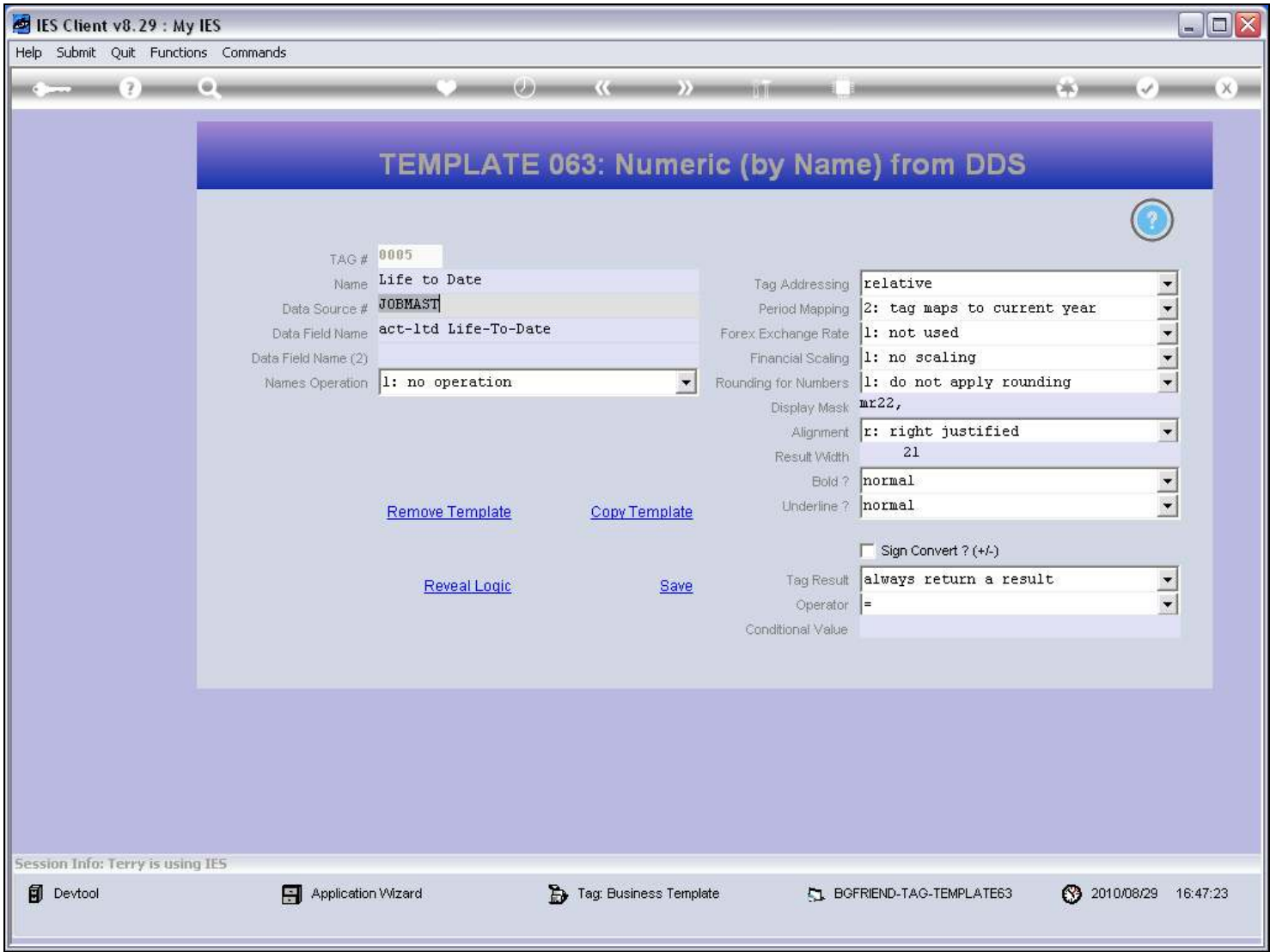
Tag: Business Template

BGFRIEND-TAG-TEMPLATE63

2010/08/29 16:47:22

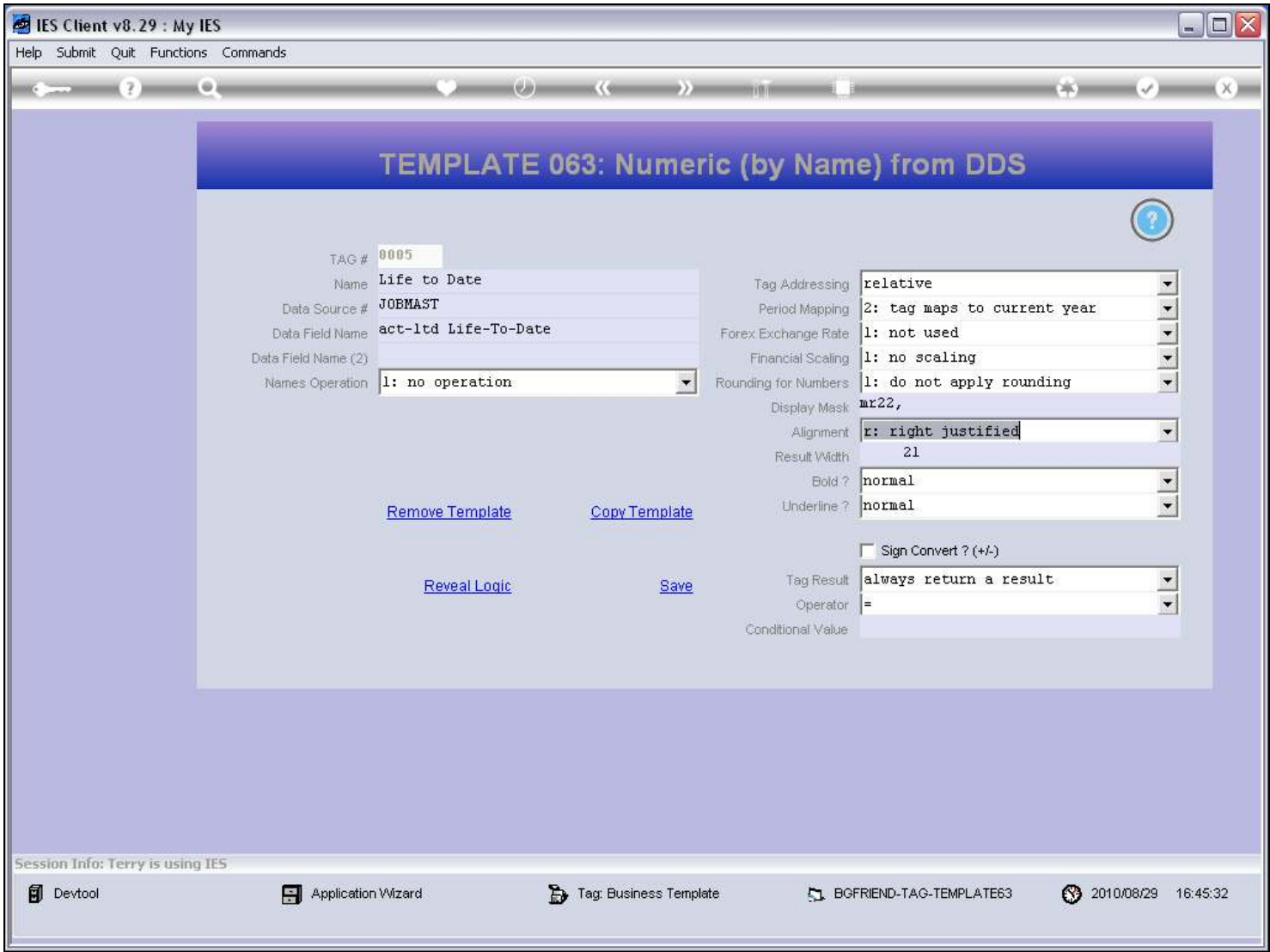
Slide notes

Slide 31 - Slide 31



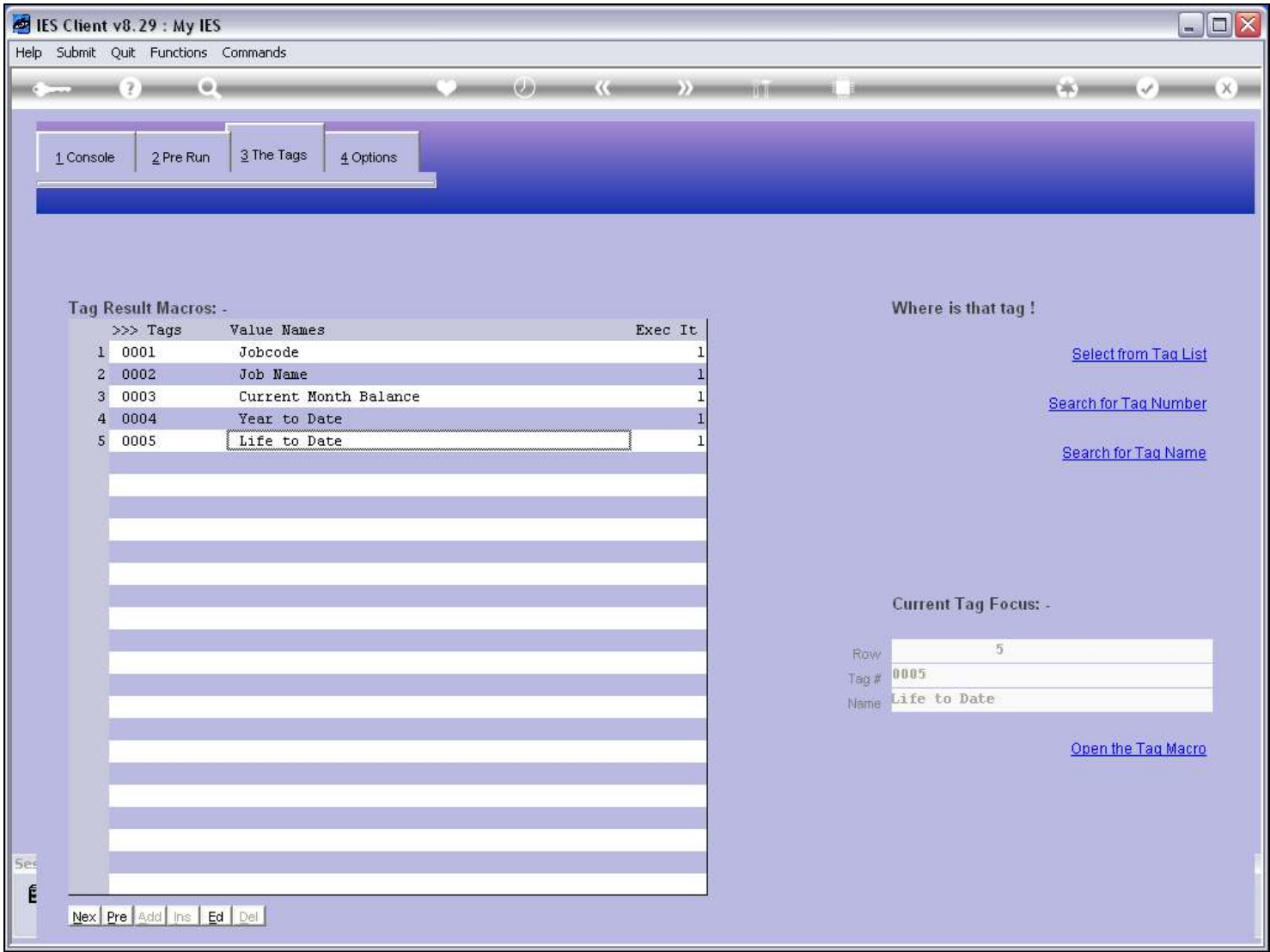
Slide notes

Slide 32 - Slide 32



Slide notes

Slide 33 - Slide 33

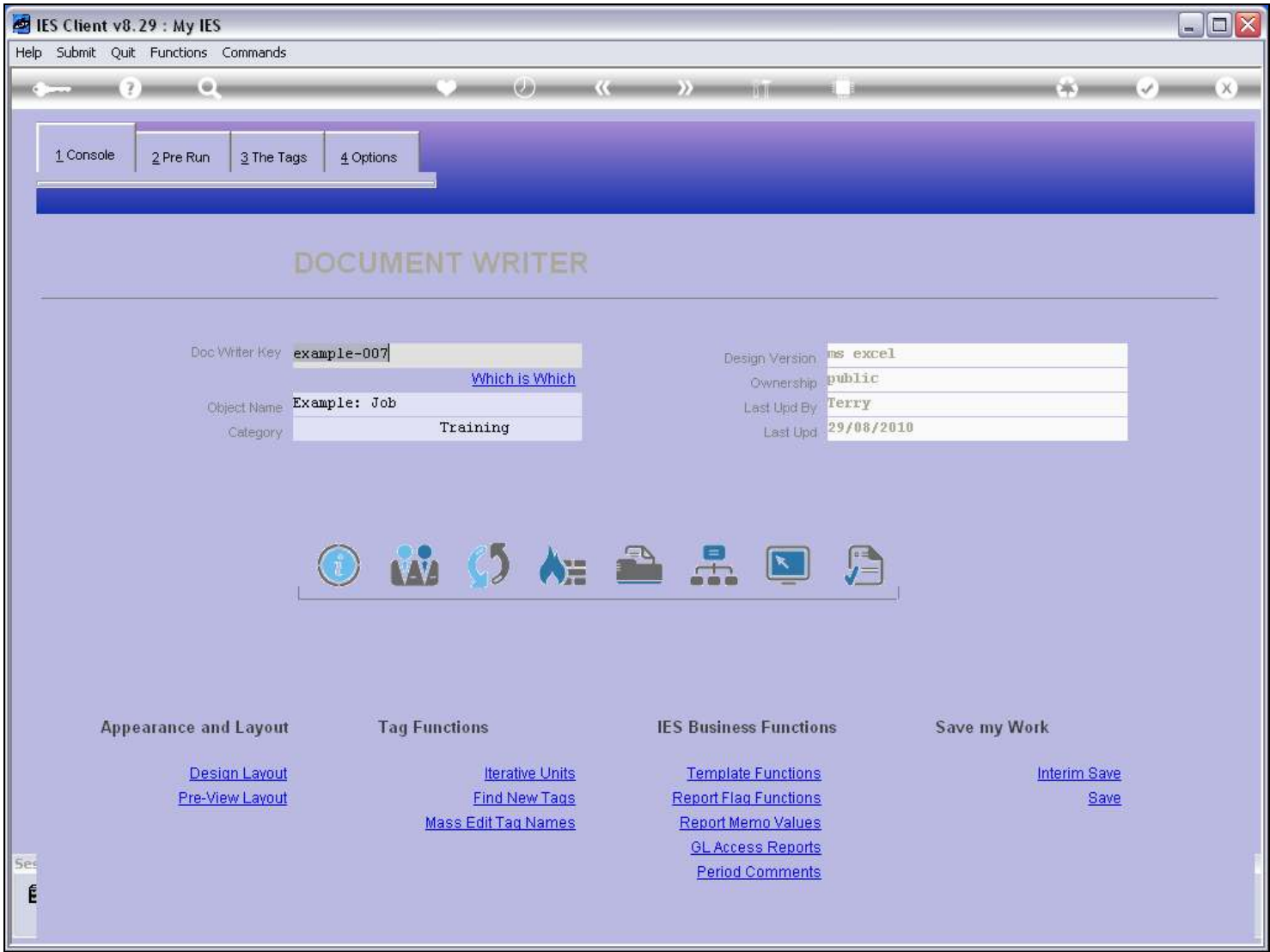


Slide notes

[illegible]

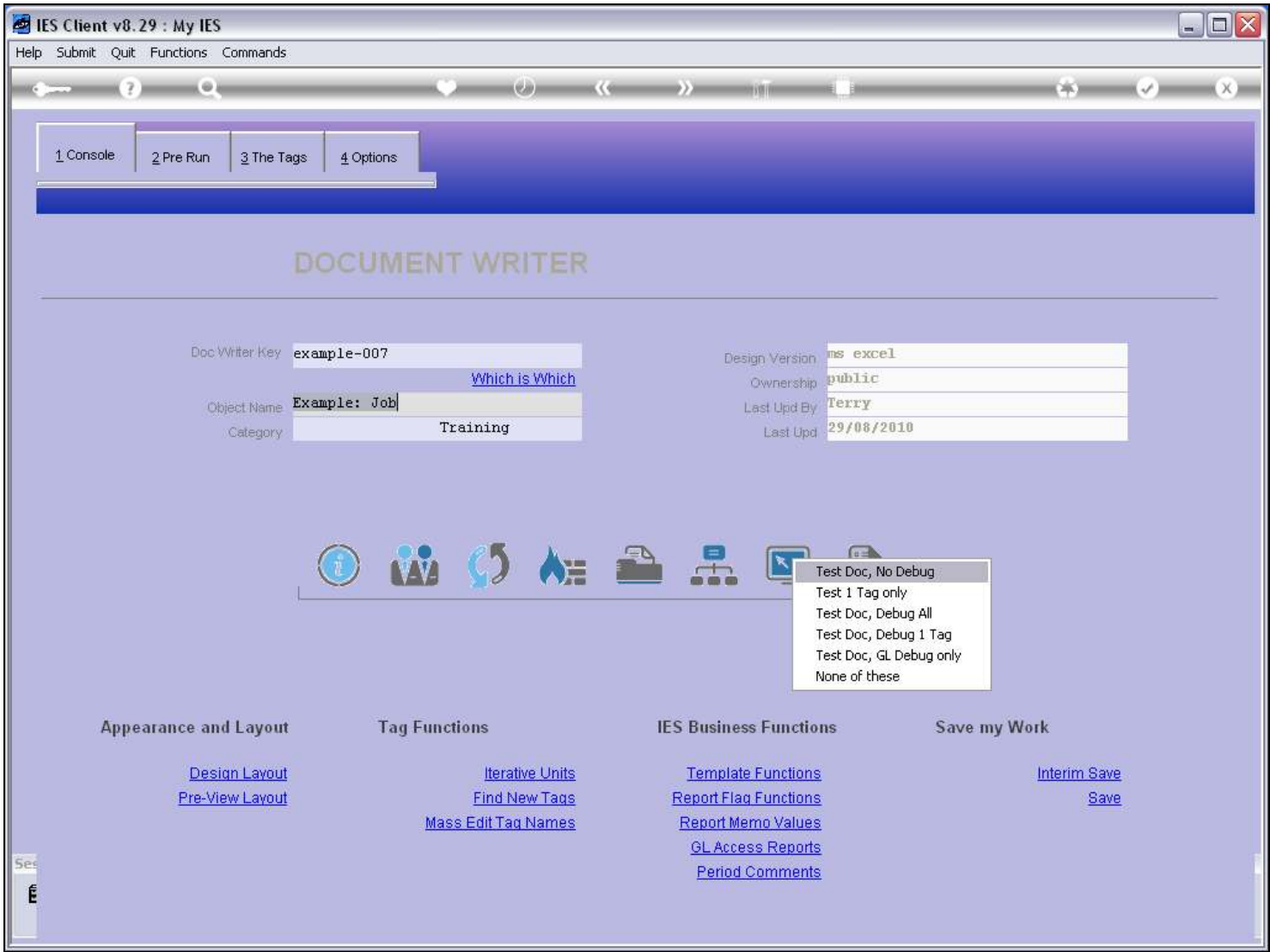
Slide notes

Slide 35 - Slide 35



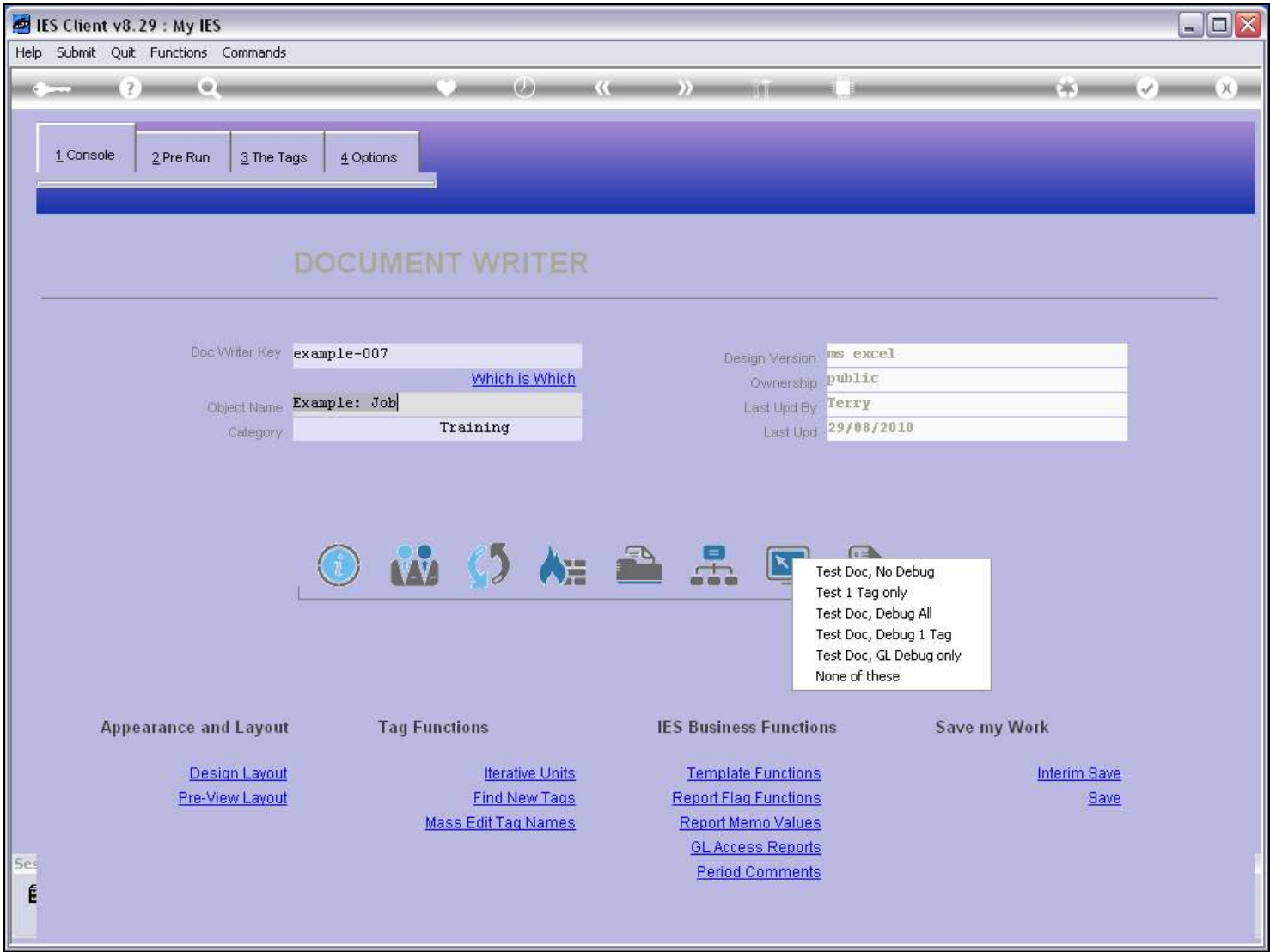
Slide notes

Slide 36 - Slide 36



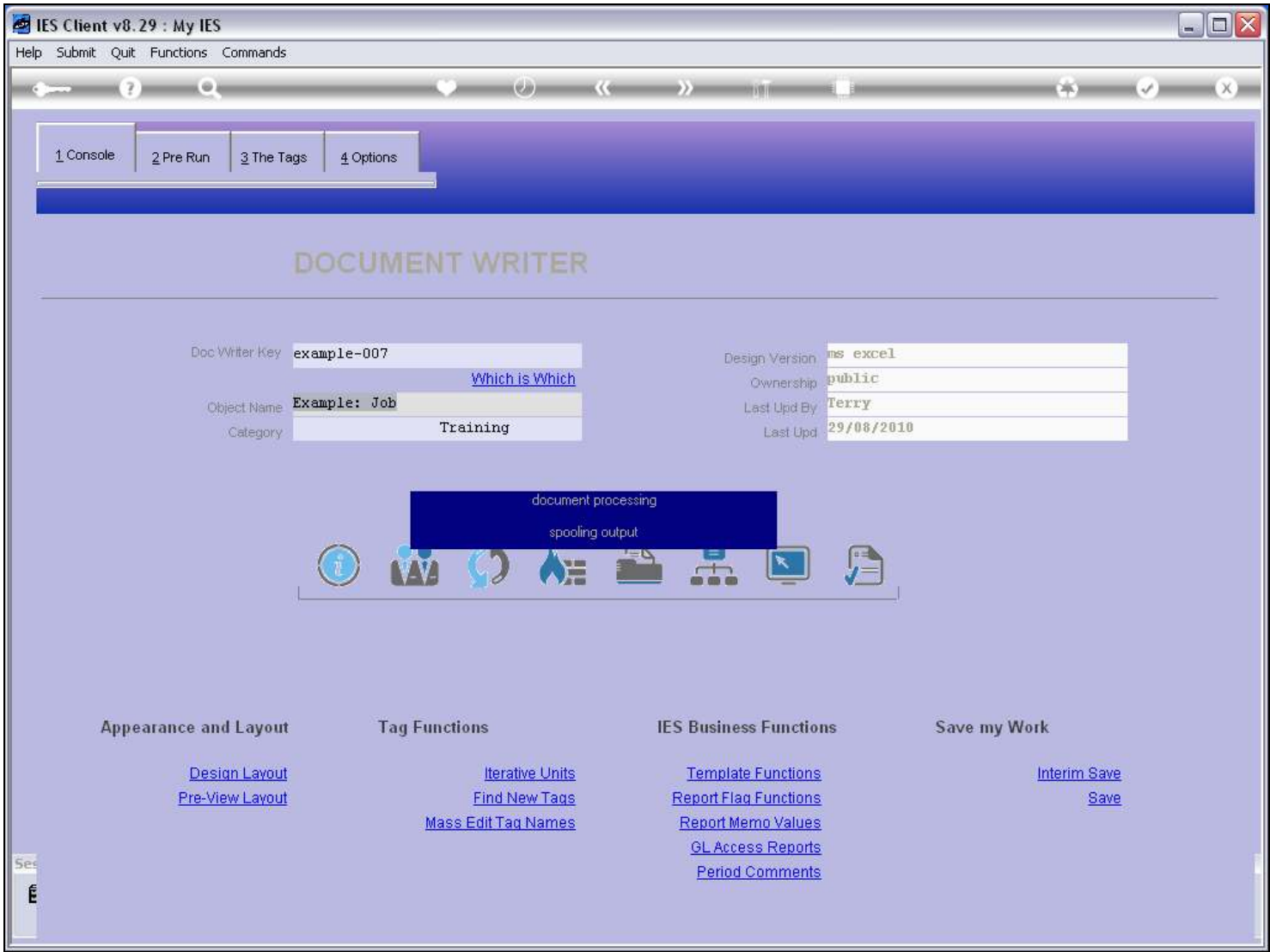
Slide notes

Slide 37 - Slide 37



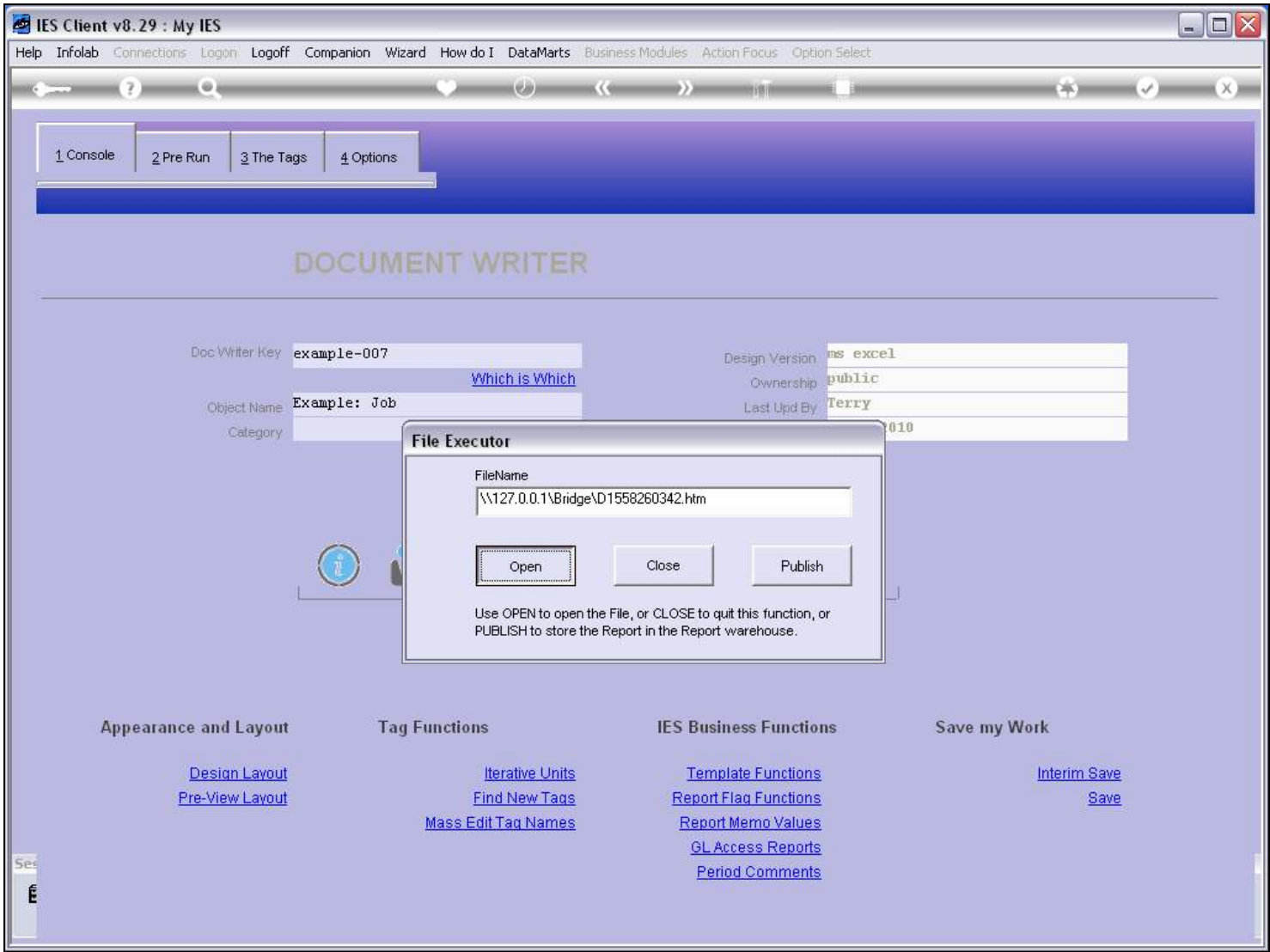
Slide notes

Slide 38 - Slide 38



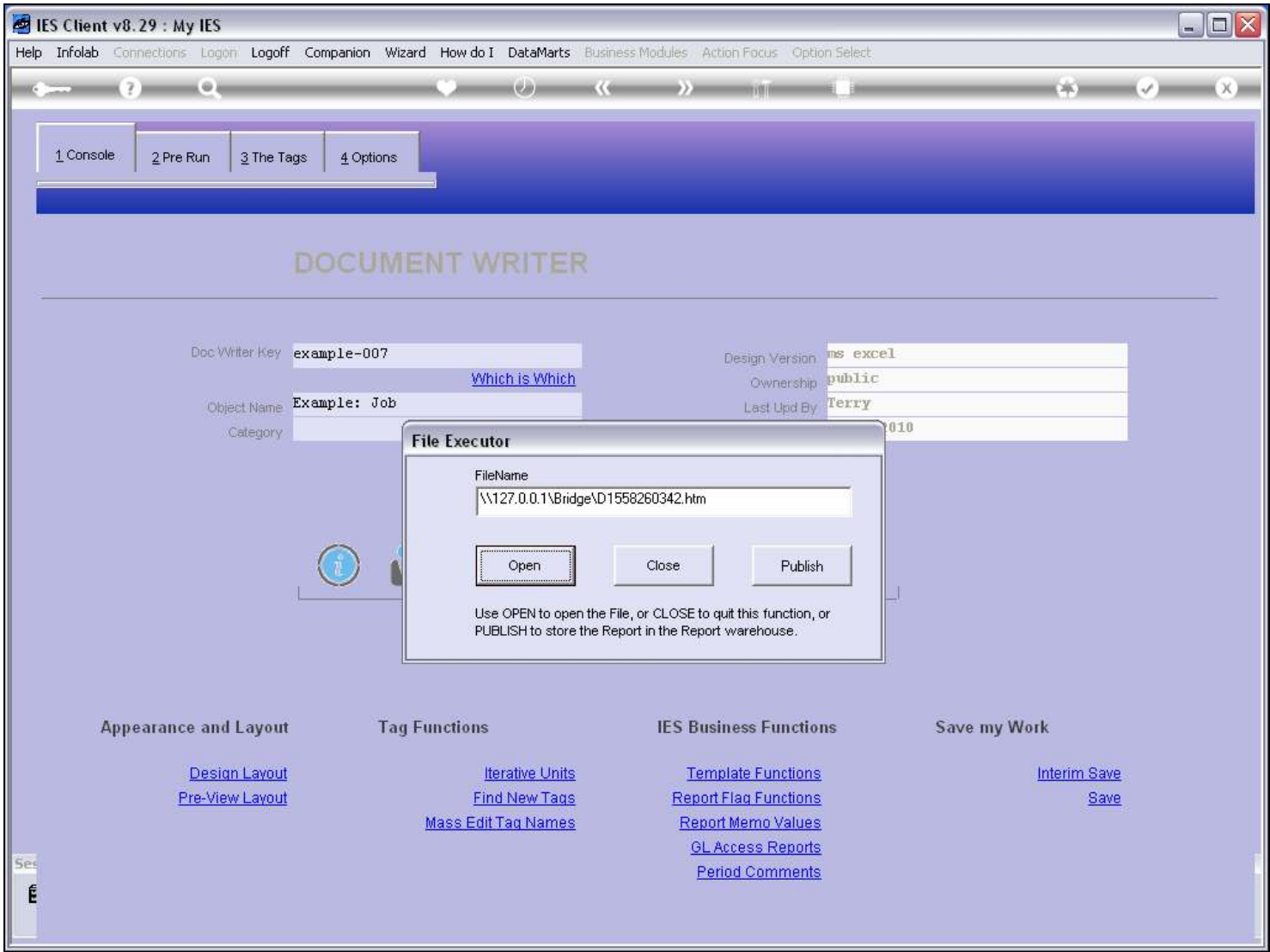
Slide notes

Slide 39 - Slide 39

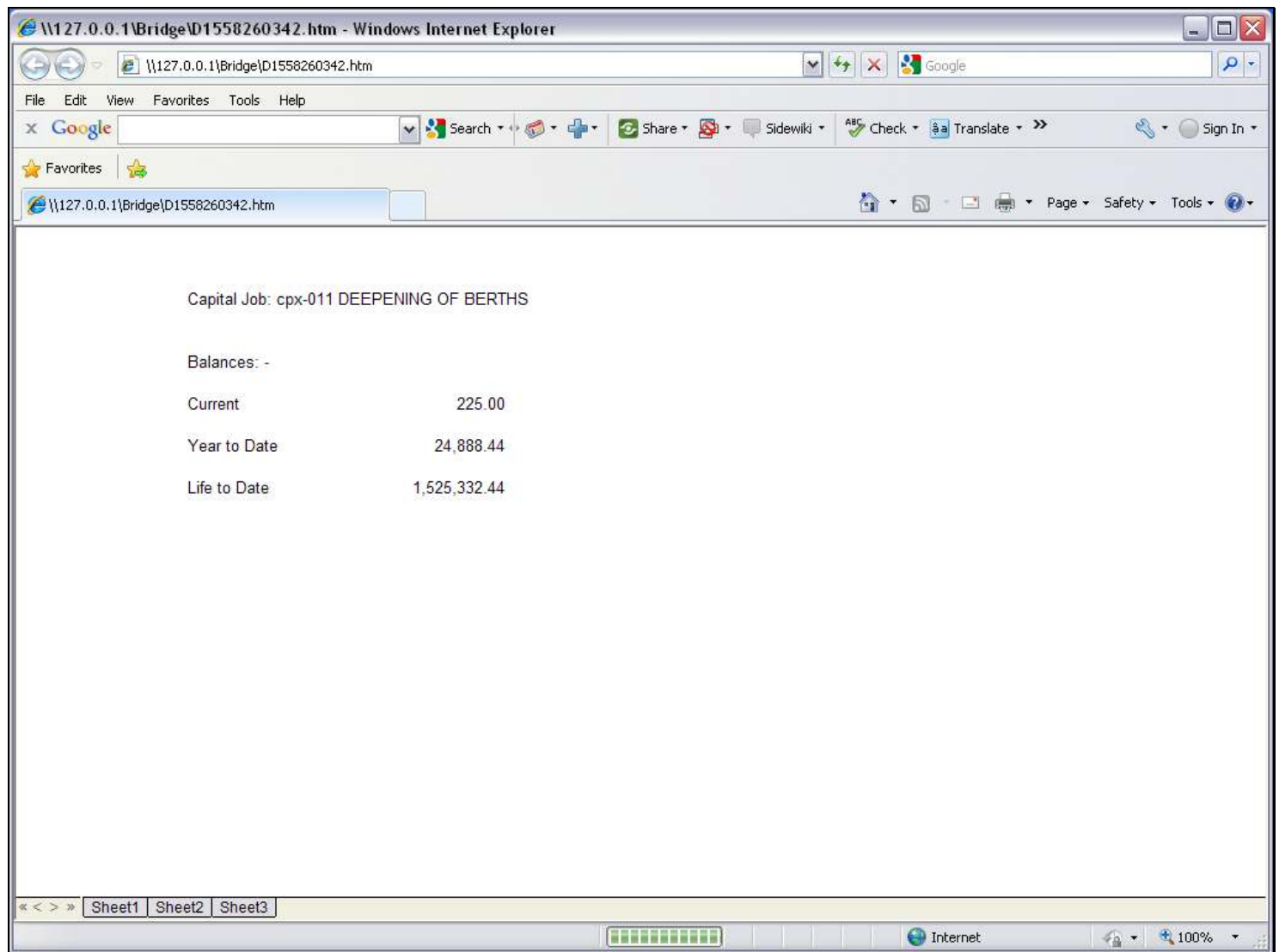


Slide notes

Slide 40 - Slide 40

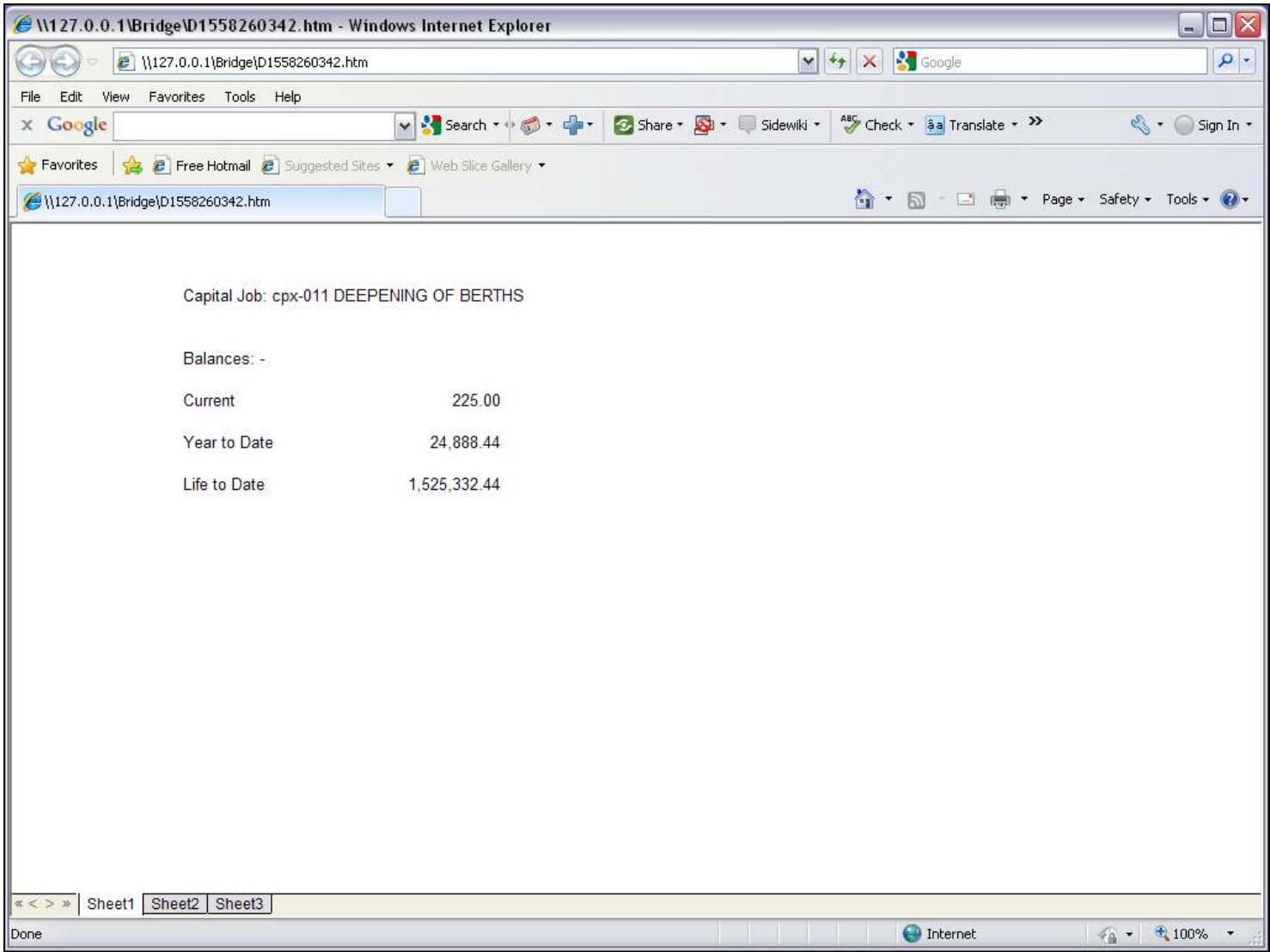


Slide notes

Slide 41 - Slide 41**Slide notes**

So now when we test the Report, the Life to Date balance is showing, and it is produced from the 'Numeric Name from Data Source' Template.

Slide 42 - Slide 42



Slide notes