

Microsoft Excel interface showing the ribbon (Home, Insert, Page Layout, Formulas, Data, Review, View, Add-Ins) and the formula bar. The active cell is C5, containing the text "We want to have a comment here, but it is just to understand the Layout, a".

The worksheet content is as follows:

Fixed Assets: Air-Conditioners				
We want to have a comment here, but it is just to understand the Layout, a				
Asset Item Code	Description	Purchase Price	Net Book Value	Accum Depr
[0001]	[0002]	[0003]	[0004]	[0005]
		[0006]	[0007]	[0008]

In our Layout, we can include any useful Comments that we do NOT want the Report to print.

D1557772960.htm - Microsoft Excel

Home Insert Page Layout Formulas Data Review View Add-Ins

Cut Copy Format Painter Clipboard Font Alignment Number Styles

General Conditional Formatting as Table Cell Styles Insert Delete Cells

C5 We want to have a comment here, but it is just to understand the Layout, a

A B C D E F G H I J

1  
2  
3  
4  
5  
6  
7  
8  
9  
10  
11  
12  
13  
14  
15  
16  
17  
18  
19  
20  
21  
22  
23  
24  
25  
26  
27  
28  
29  
30  
31  
32  
33  
34

**Fixed Assets: Air-Conditioners**

We want to have a comment here, but it is just to understand the Layout, a

Asset Item Code	Description	Purchase Price	Net Book Value	Accum Depr
0001	0002	0003	0004	0005
		0006	0007	0008

## Page 2 of 41

Microsoft Excel interface showing the ribbon (Home, Insert, Page Layout, Formulas, Data, Review, View, Add-Ins) and the formula bar. The active cell is C5, containing the text "We want to have a comment here, but it is just to understand the Layout, a".

The worksheet content is as follows:

Fixed Assets: Air-Conditioners				
Asset Item Code	Description	Purchase Price	Net Book Value	Accum Depr
0001	0002	0003	0004	0005
		0006	0007	0008

## Page 3 of 41

Microsoft Excel interface showing the ribbon (Home, Insert, Page Layout, Formulas, Data, Review, View, Add-Ins) and the worksheet grid. The worksheet contains the following content:

**Fixed Assets: Air-Conditioners**

We want to have a comment here, but it is just to understand the Layout, and it should never print on the final Report.

Asset Item Code	Description	Purchase Price	Net Book Value	Accum Depr
0001	0002	0003	0004	0005
		0006	0007	0008

## Page 4 of 41

## Slide 5 - Slide 5

**Fixed Assets: Air-Conditioners**

We want to have a comment here, but it is just to understand the Layout, and it should never print on the final Report.

Asset Item Code	Description	Purchase Price	Net Book Value	Accum Depr
0001	0002	0003	0004	0005
		0006	0007	0008

## Slide notes

We just put the Comment on a line by itself, and then precede it with a Comment Tag.

D1557772960.htm - Microsoft Excel

Home Insert Page Layout Formulas Data Review View Add-Ins

Clipboard Font Alignment Number Styles Cells

B6

	A	B	C	D	E	F	G	H	I	J
1										
2										
3										
4										
5										
6										
7										
8										
9										
10										
11										
12										
13										
14										
15										
16										
17										
18										
19										
20										
21										
22										
23										
24										
25										
26										
27										
28										
29										
30										
31										
32										
33										
34										

**Fixed Assets: Air-Conditioners**

We want to have a comment here, but it is just to understand the Layout, and it should never print on the final Report.

Asset Item Code	Description	Purchase Price	Net Book Value	Accum Depr
0001	0002	0003	0004	0005
0006	0007	0008		

## Page 6 of 41

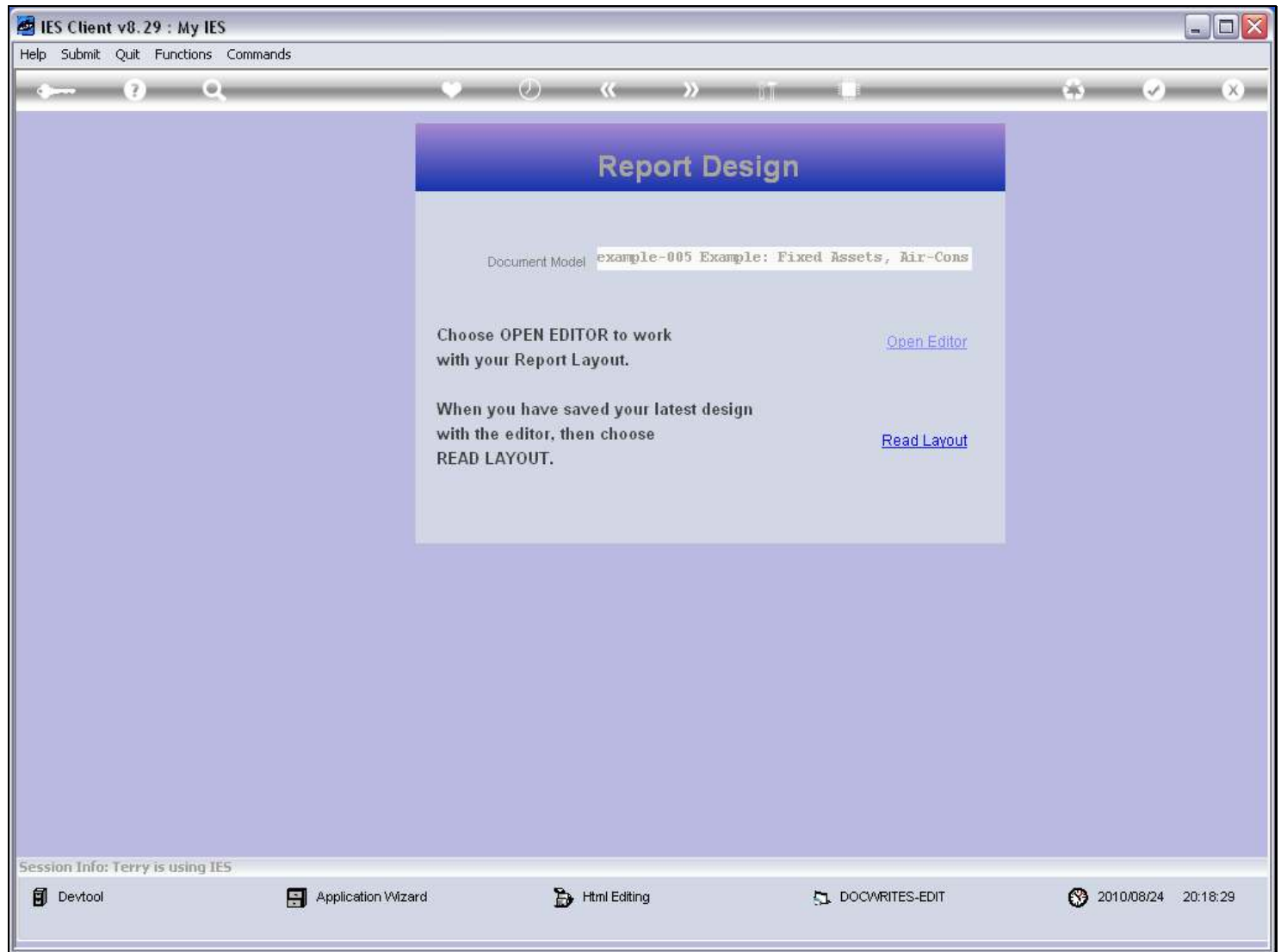
The screenshot shows a Microsoft Excel window with the title bar "D1557772960.htm - Microsoft Excel". The ribbon is set to "Home". The worksheet has columns A through J and rows 1 through 34. A table is located in the range B5:D10. The table has the following content:

Asset Item Code	Description	Purchase Price	Net Book Value	Accum Depr
I00011	I00021	I00031	I00041	I00051

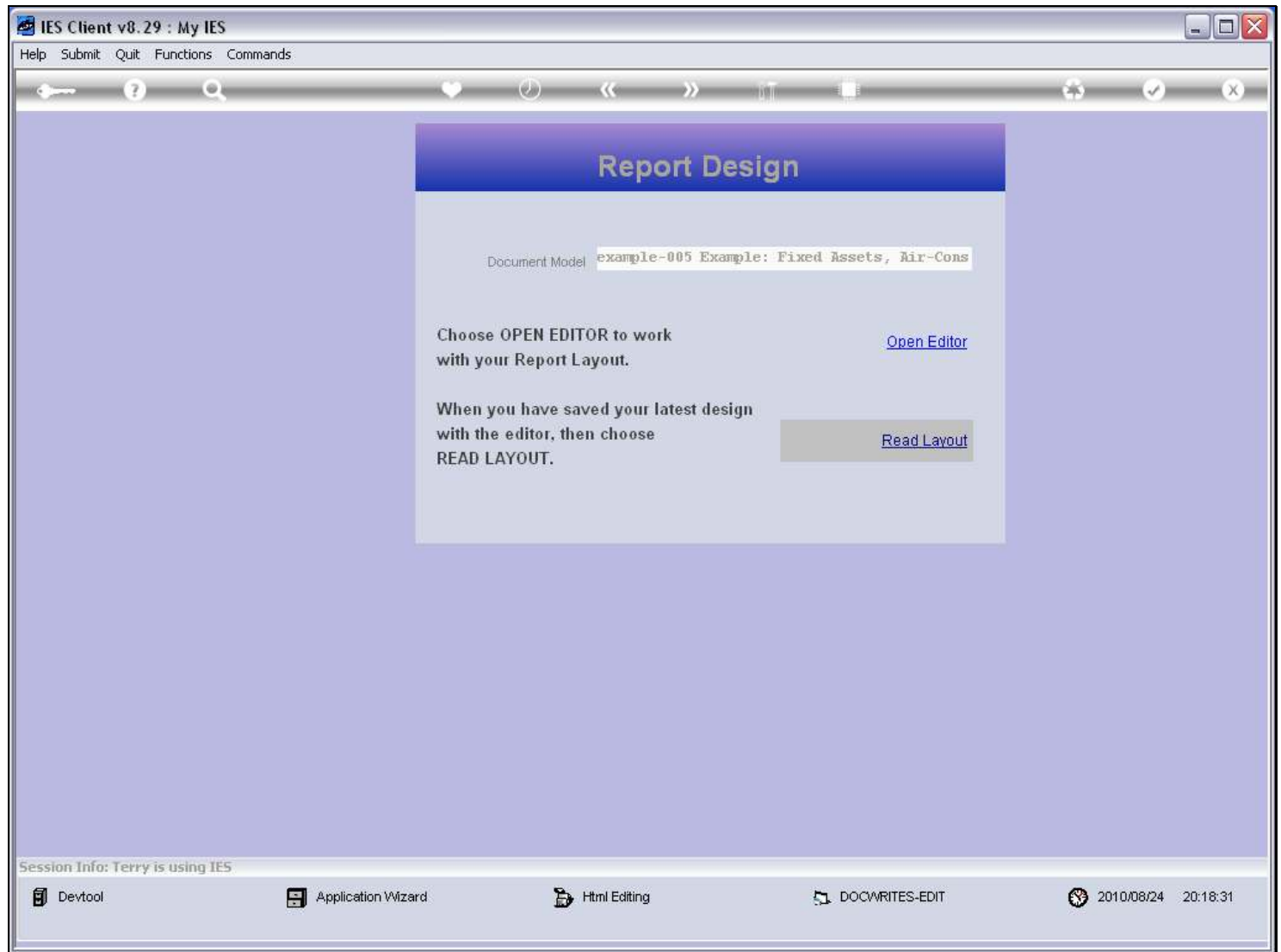
A dialog box titled "Microsoft Office Excel" is open, displaying the message: "D1557772960.htm may contain features that are not compatible with Web Page. Do you want to keep the workbook in this format?". The dialog box includes three buttons: "Yes", "No", and "Help".

## Page 7 of 41

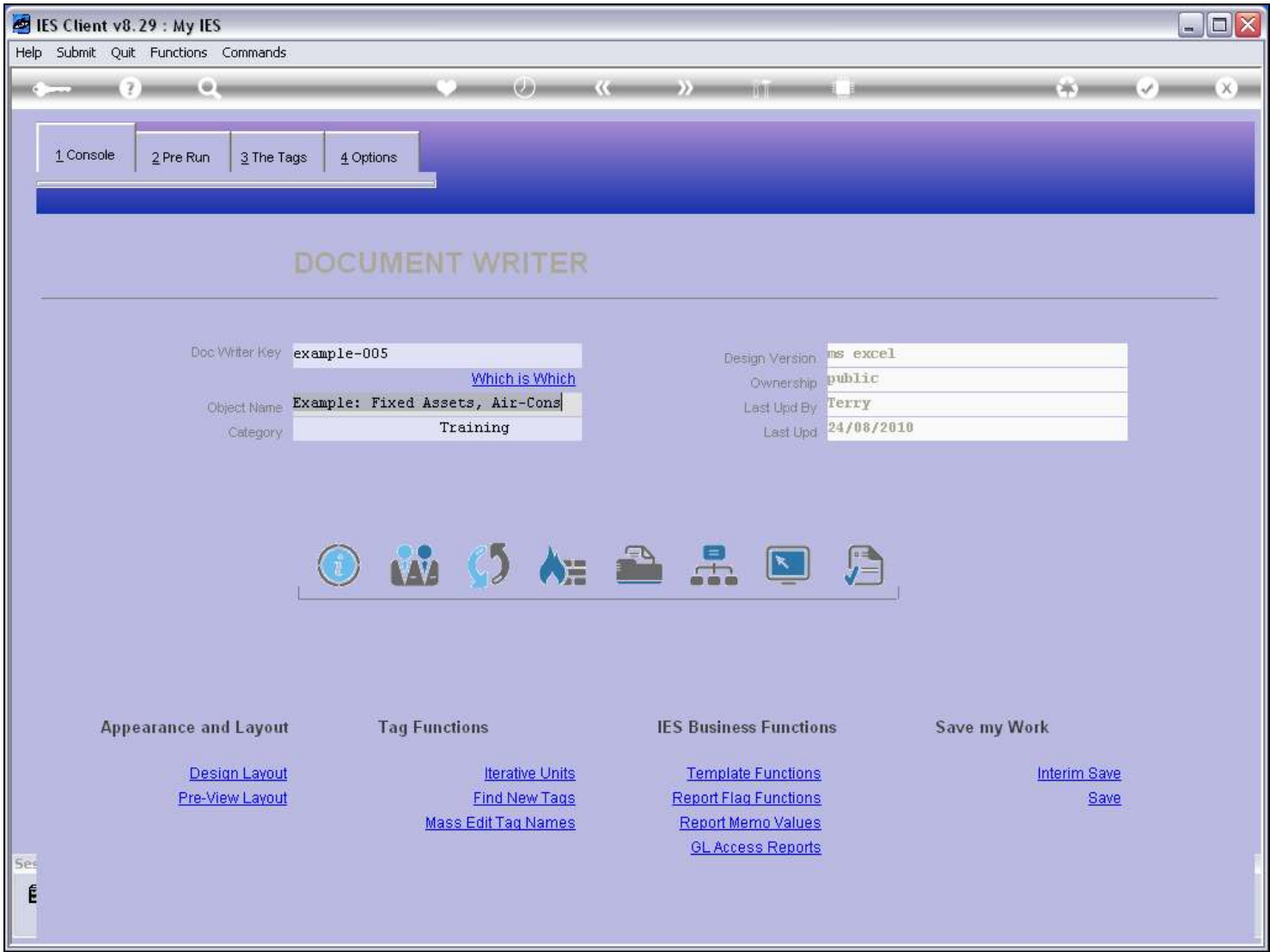


**Slide 8 - Slide 8****Slide notes**



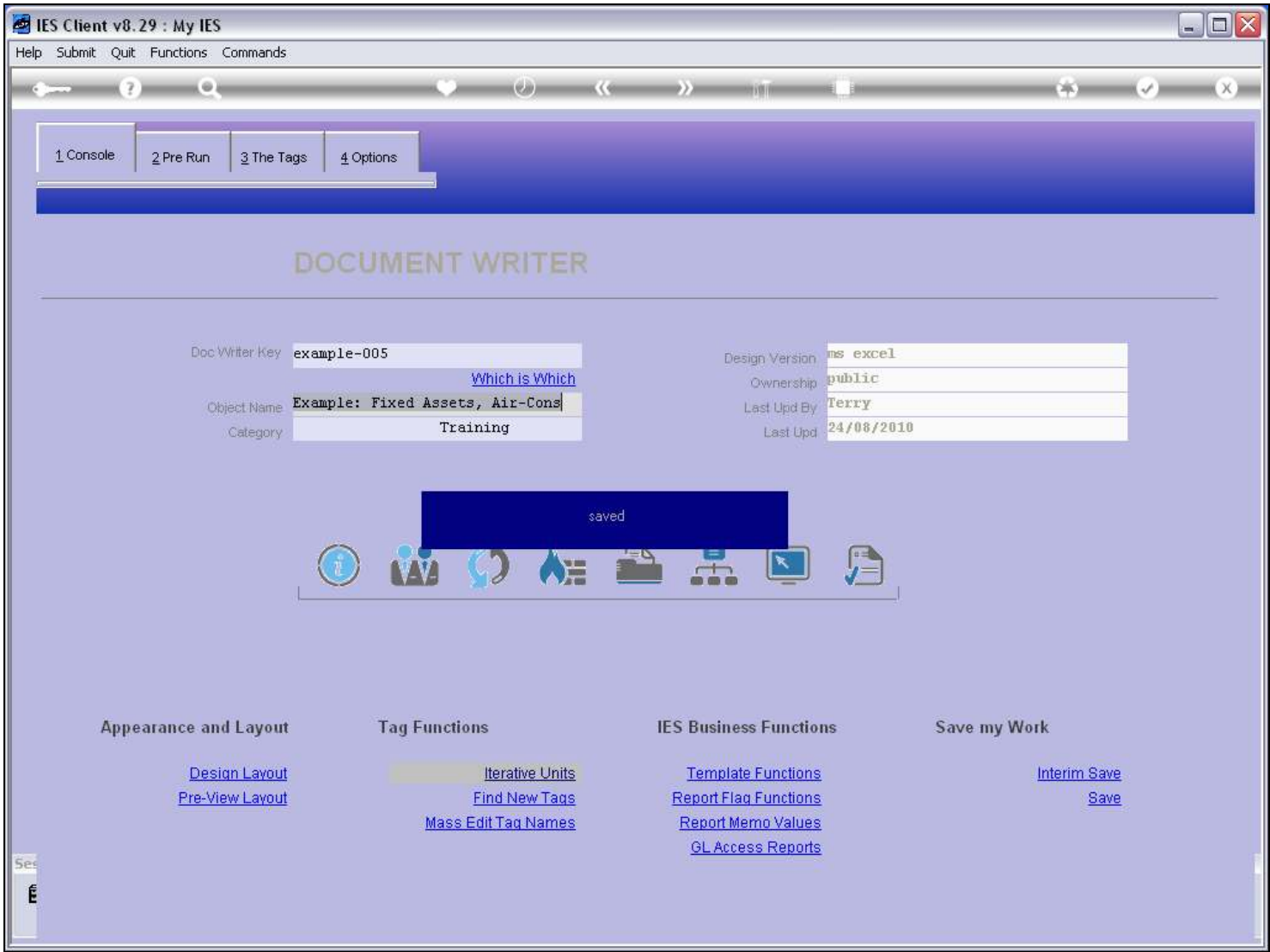
**Slide 9 - Slide 9****Slide notes**

Slide 10 - Slide 10



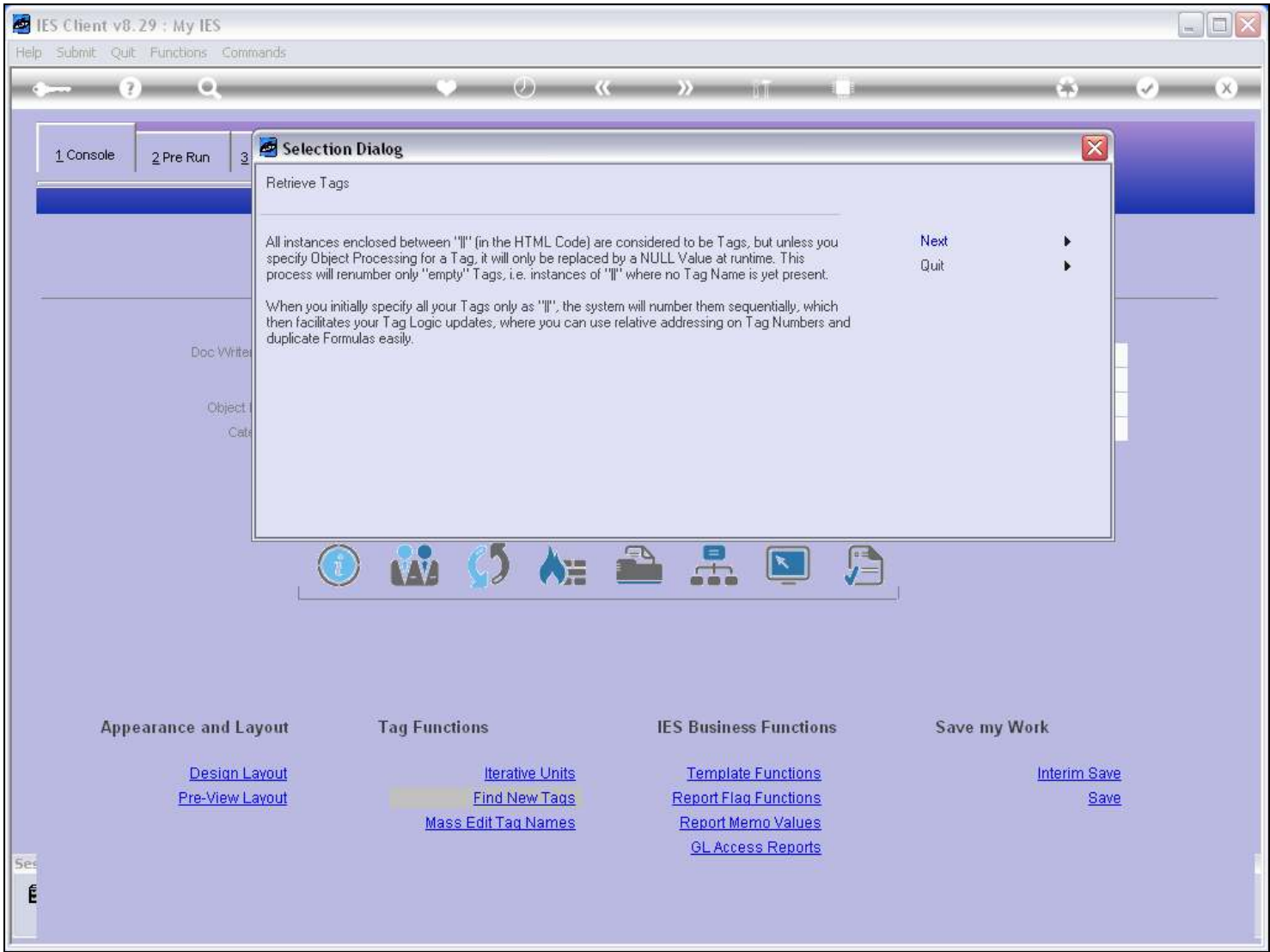
Slide notes

Slide 11 - Slide 11



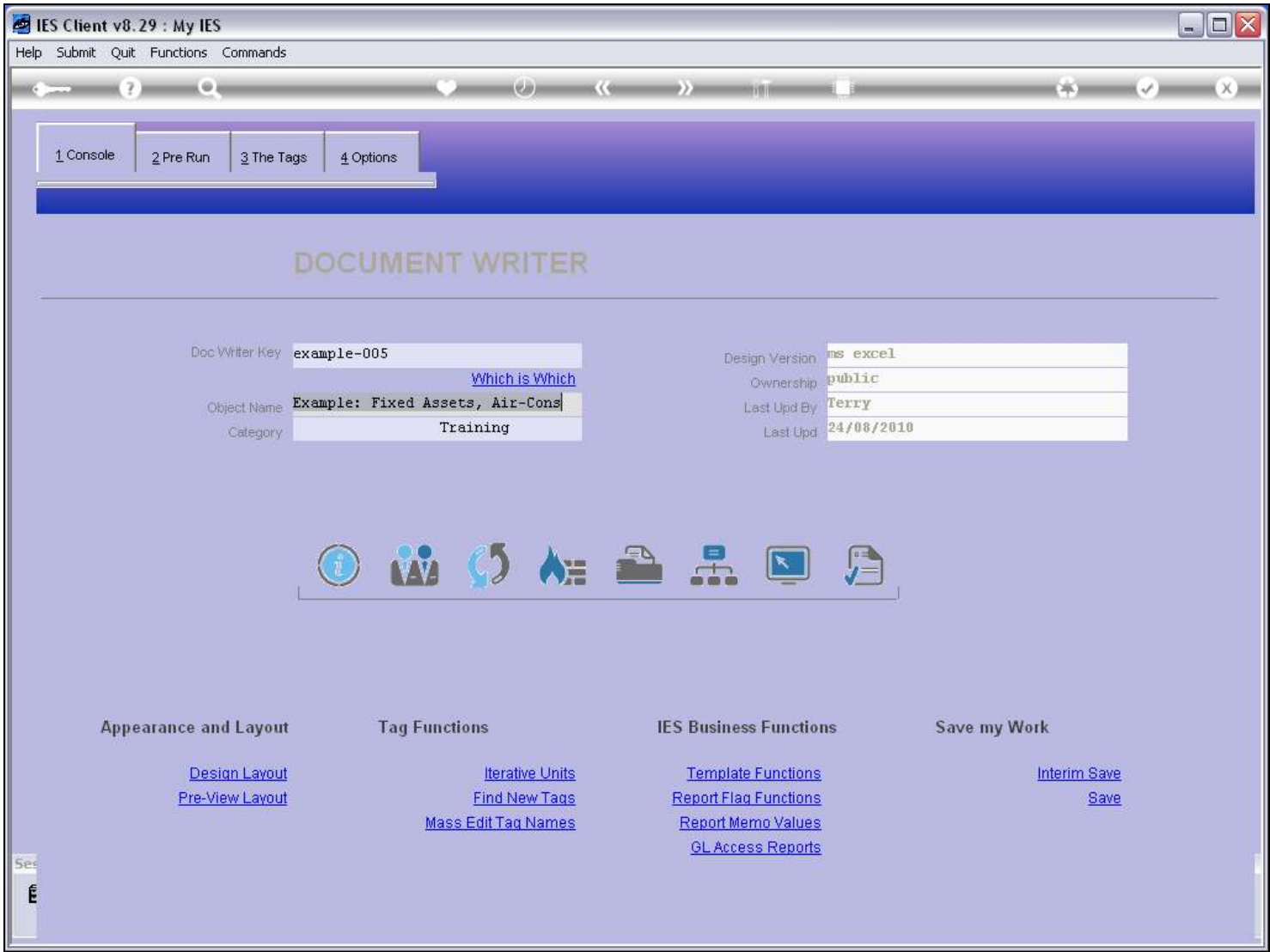
Slide notes

Slide 12 - Slide 12



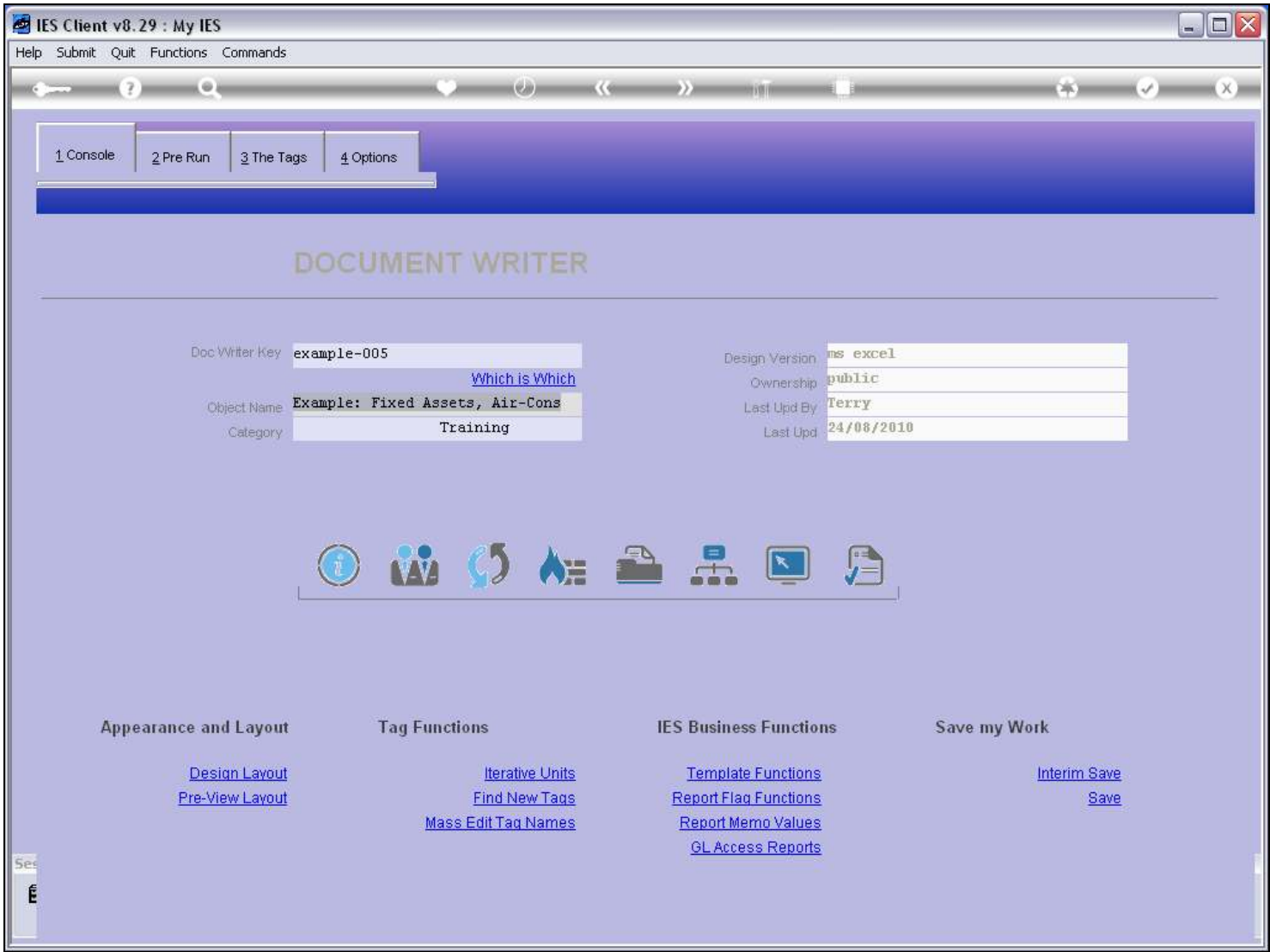
Slide notes

Slide 13 - Slide 13



Slide notes

Slide 14 - Slide 14



Slide notes

Slide 15 - Slide 15

IES Client v8.29 : My IES

Help Submit Quit Functions Commands

1 Console2 Pre Run3 The Tags4 Options

Tag Result Macros: -

>>>	Tags	Value Names	Exec It
1	0009	0009	1
2	0001	Unit Call	1
3	0002	*** unit dependent	1
4	0003	*** unit dependent	1
5	0004	*** unit dependent	1
6	0005	*** unit dependent	1
7	0006	Total 1	1
8	0007	Total 2	1
9	0008	Total 3	1

NexPreAddInsEdDel

Where is that tag !

[Select from Tag List](#)

[Search for Tag Number](#)

[Search for Tag Name](#)

Current Tag Focus: -

Row1

Tag #0001

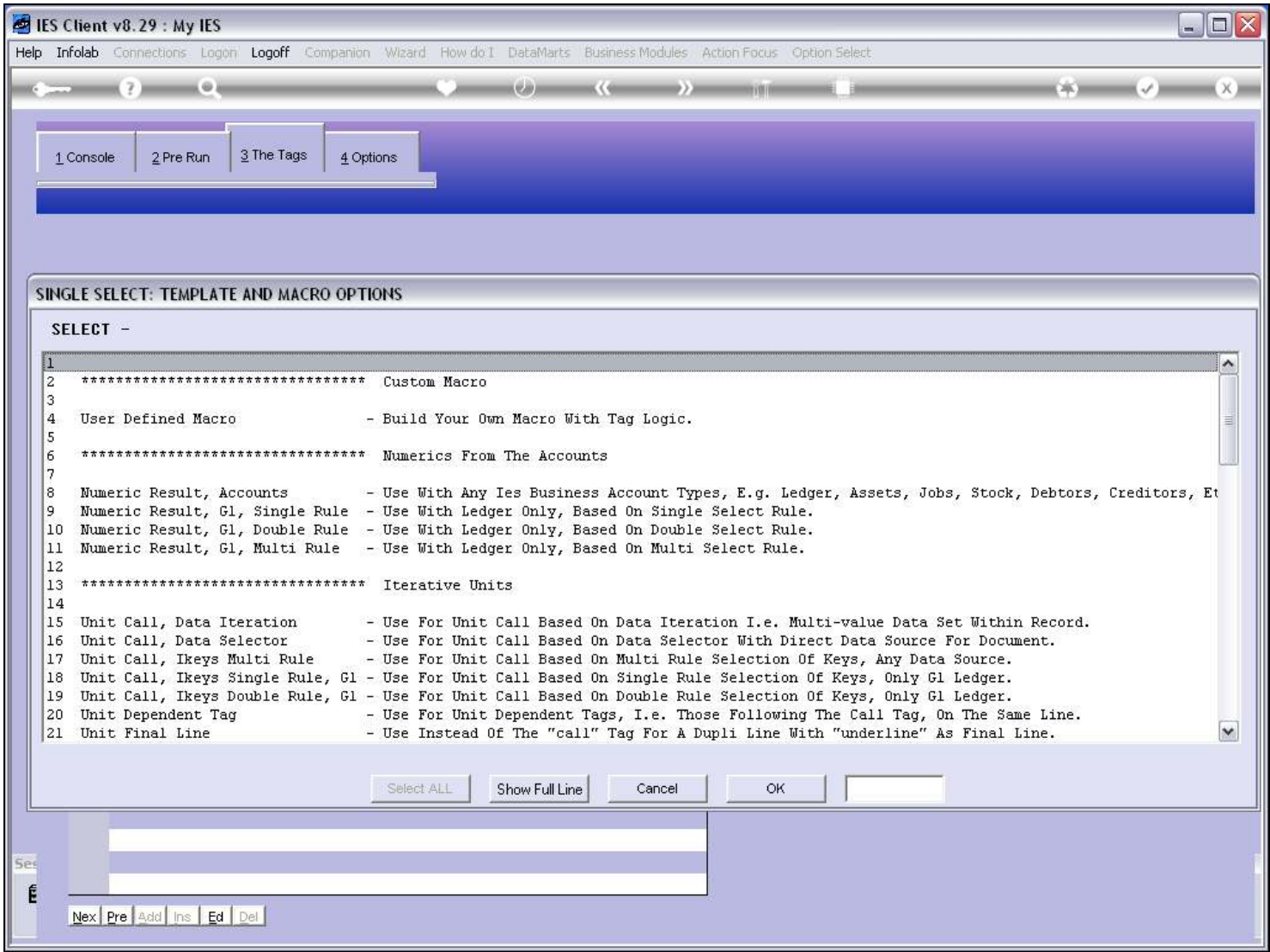
NameUnit Call

[Open the Tag Macro](#)

Slide notes

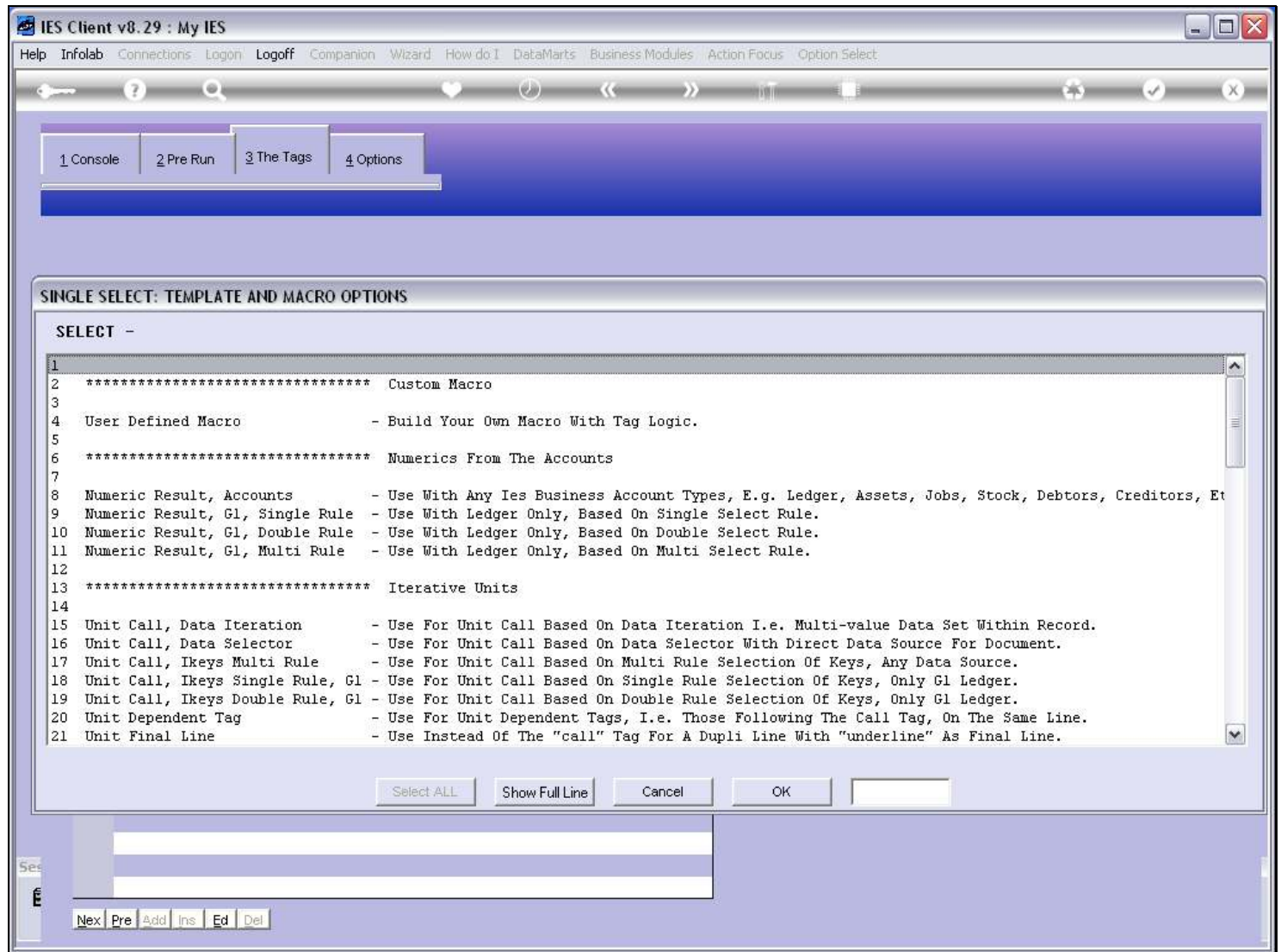


Slide 16 - Slide 16



Slide notes

## Slide 17 - Slide 17



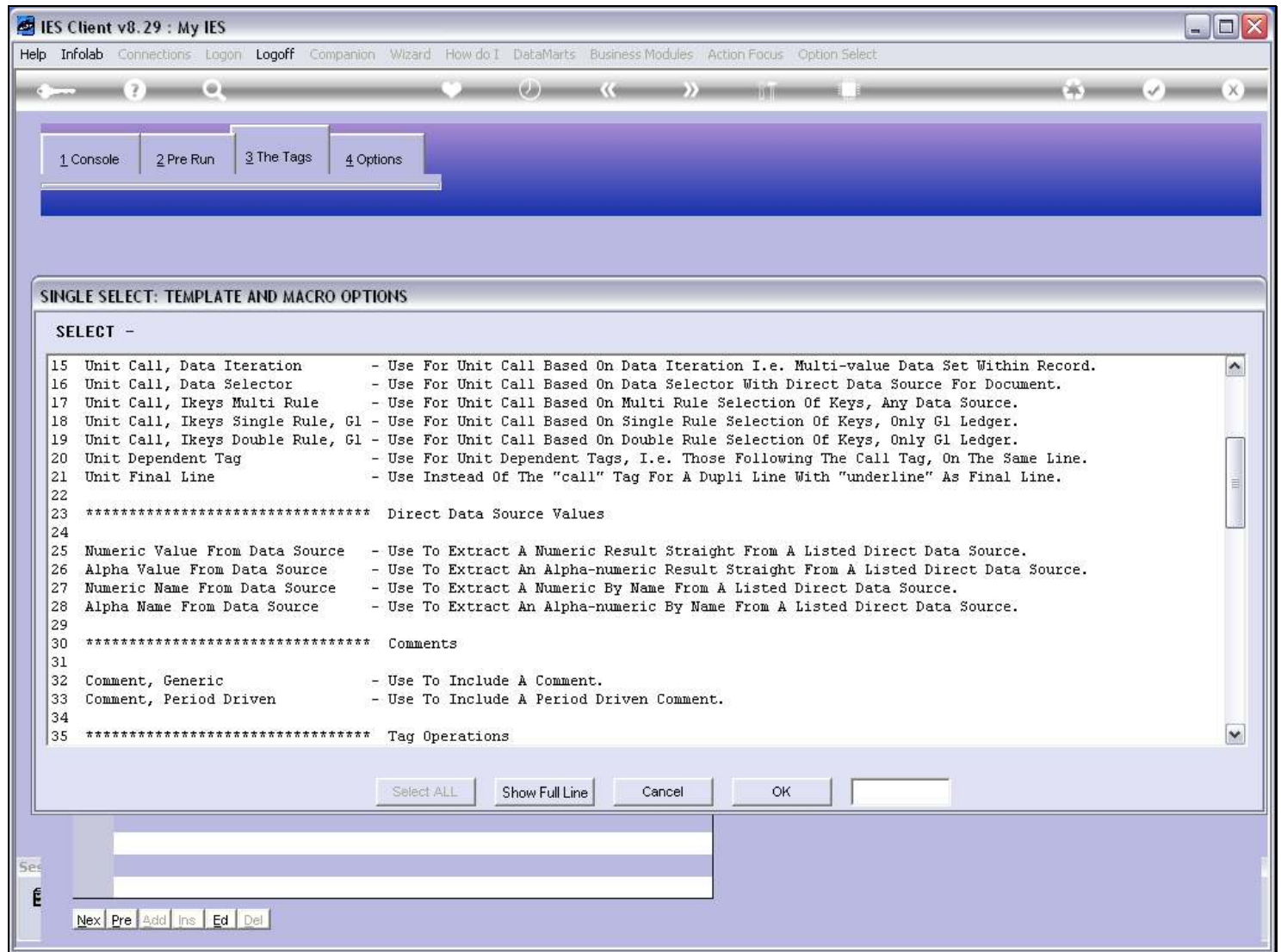
## Slide notes

**Slide 18 - Slide 18**



**Slide notes**

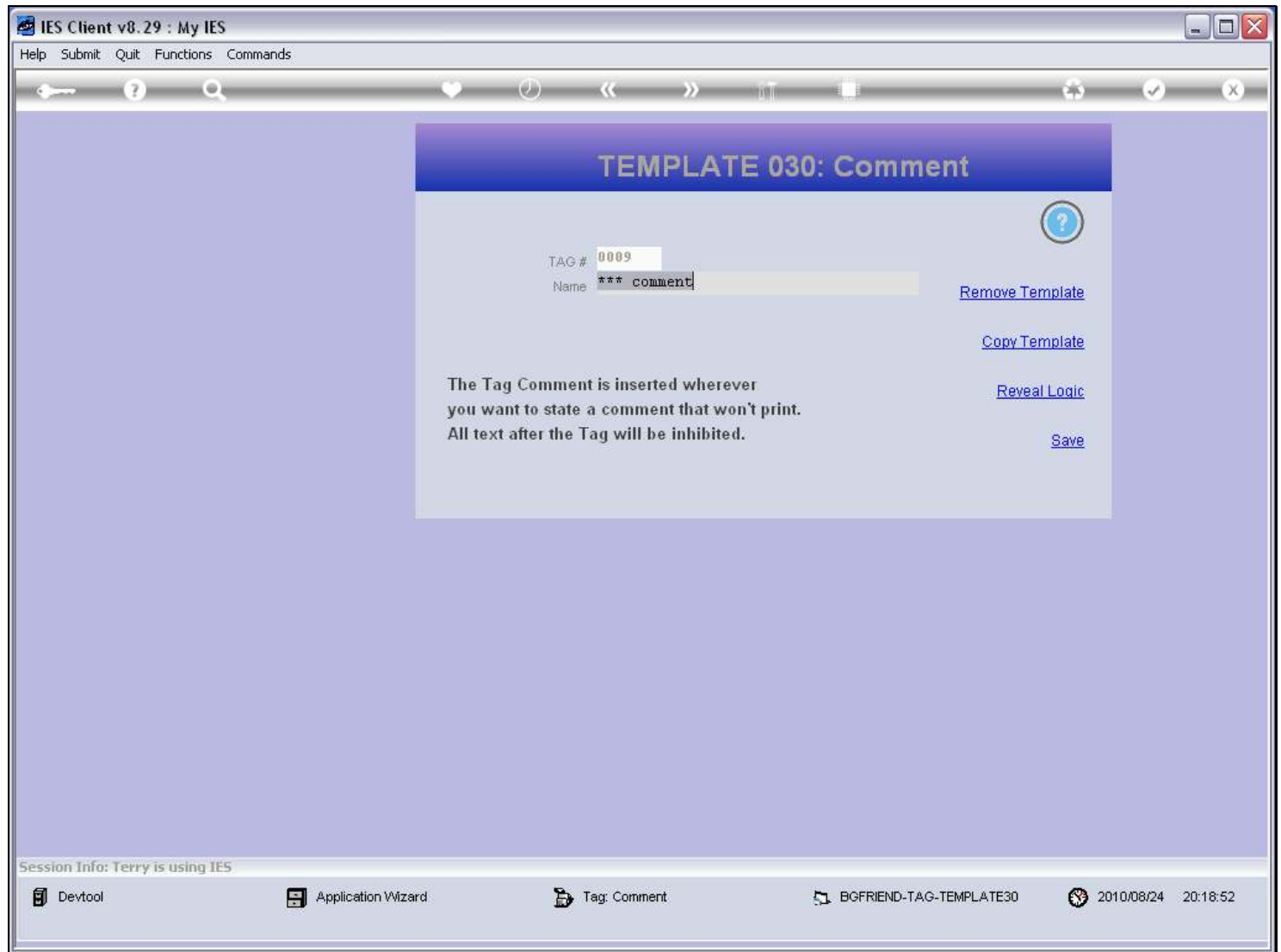
## Slide 19 - Slide 19

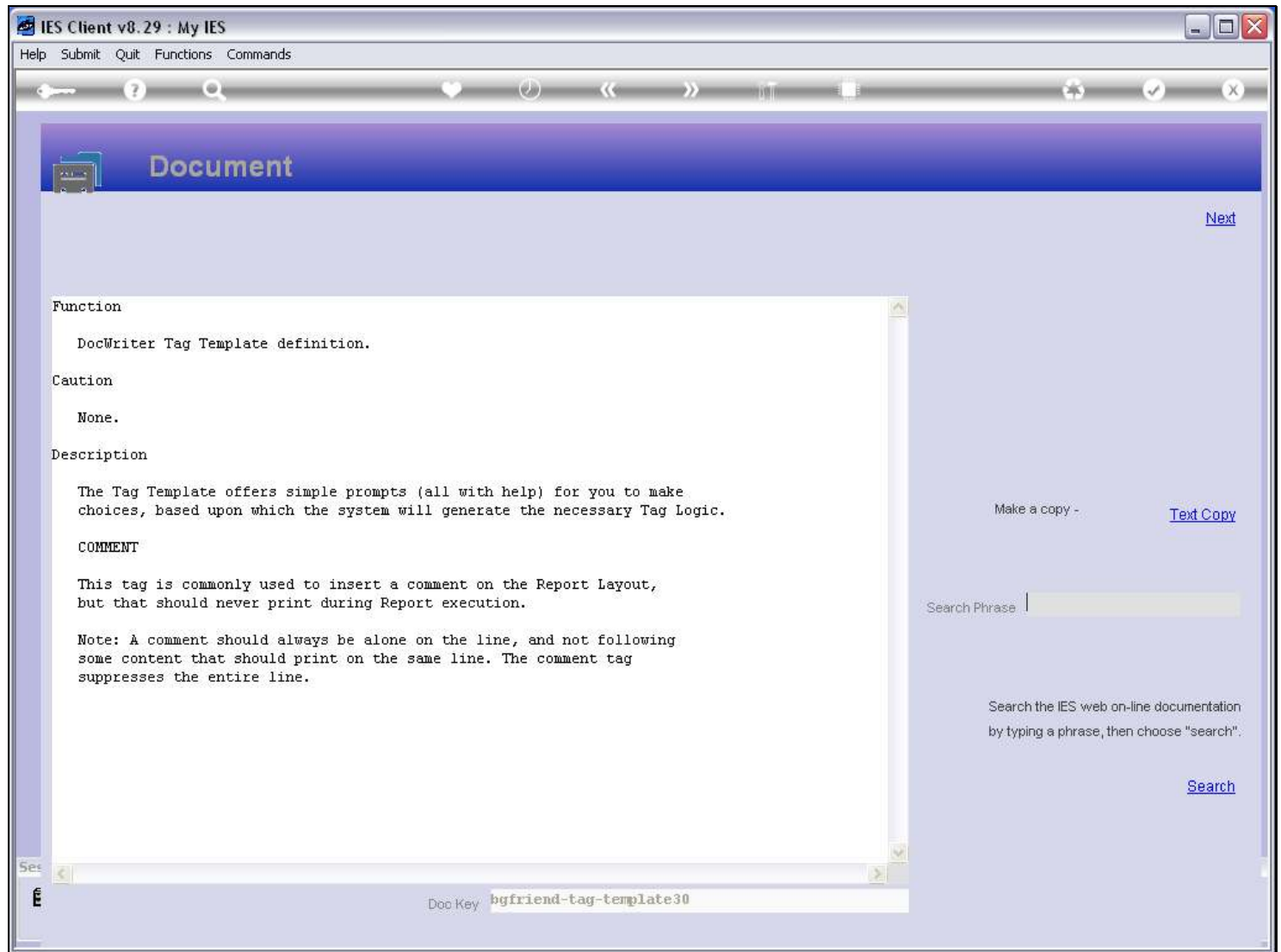


## Slide notes

[illegible]

## Page 20 of 41

**Slide 21 - Slide 21****Slide notes**

**Slide 22 - Slide 22****Slide notes**

The Help explains that a Comment should be on a line by itself, preceded only by the Comment Tag, which will suppress the line at print time.



**Slide 23 - Slide 23**

The screenshot shows the IES Client v8.29 application window. The title bar reads "IES Client v8.29 : My IES". The menu bar includes "Help", "Submit", "Quit", "Functions", and "Commands". The toolbar contains icons for key, help, search, heart, clock, left arrow, right arrow, list, document, refresh, checkmark, and close. The main window is titled "Document" and contains the following content:

**Function**  
DocWriter Tag Template definition.

**Caution**  
None.

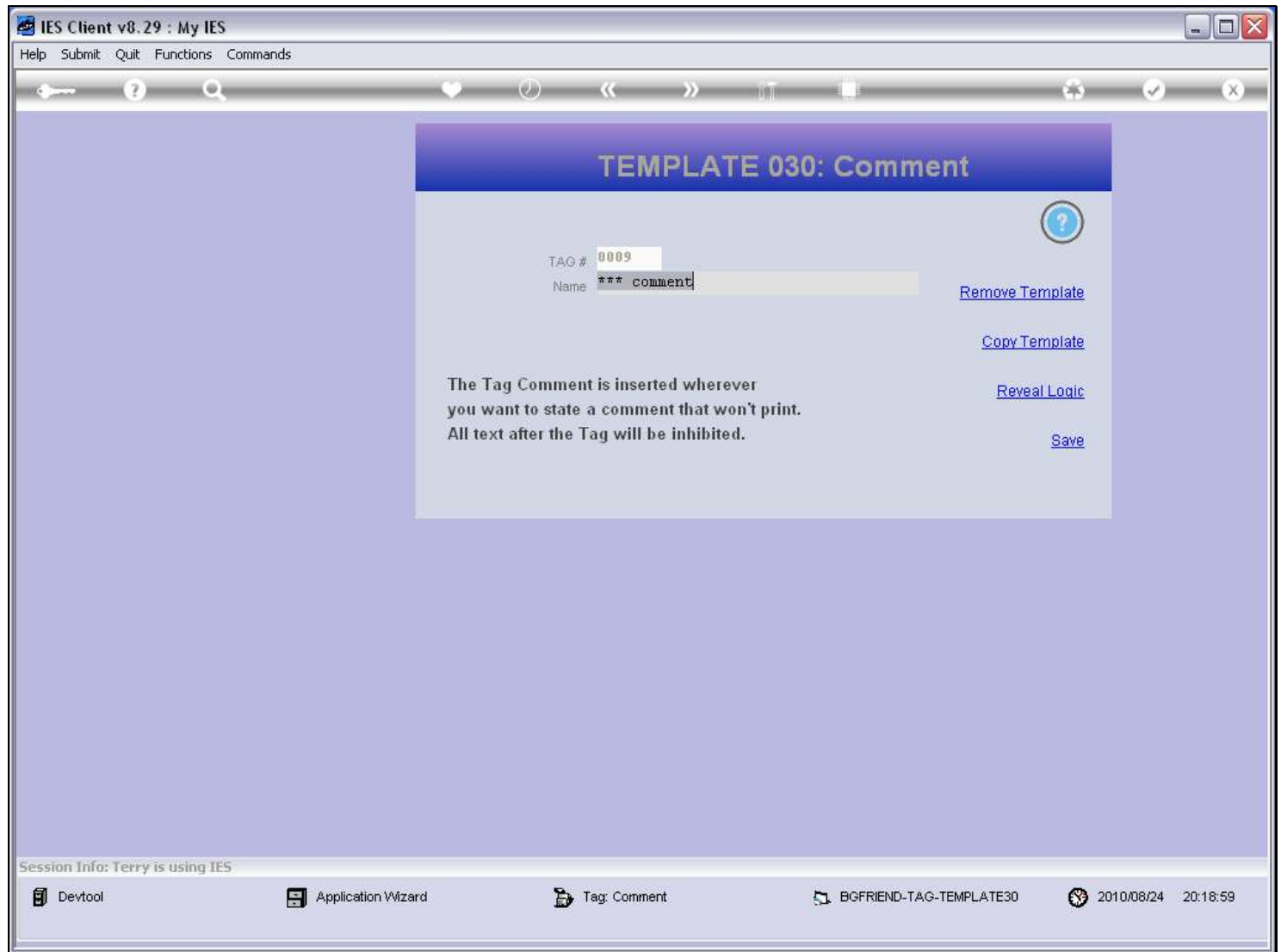
**Description**  
The Tag Template offers simple prompts (all with help) for you to make choices, based upon which the system will generate the necessary Tag Logic.

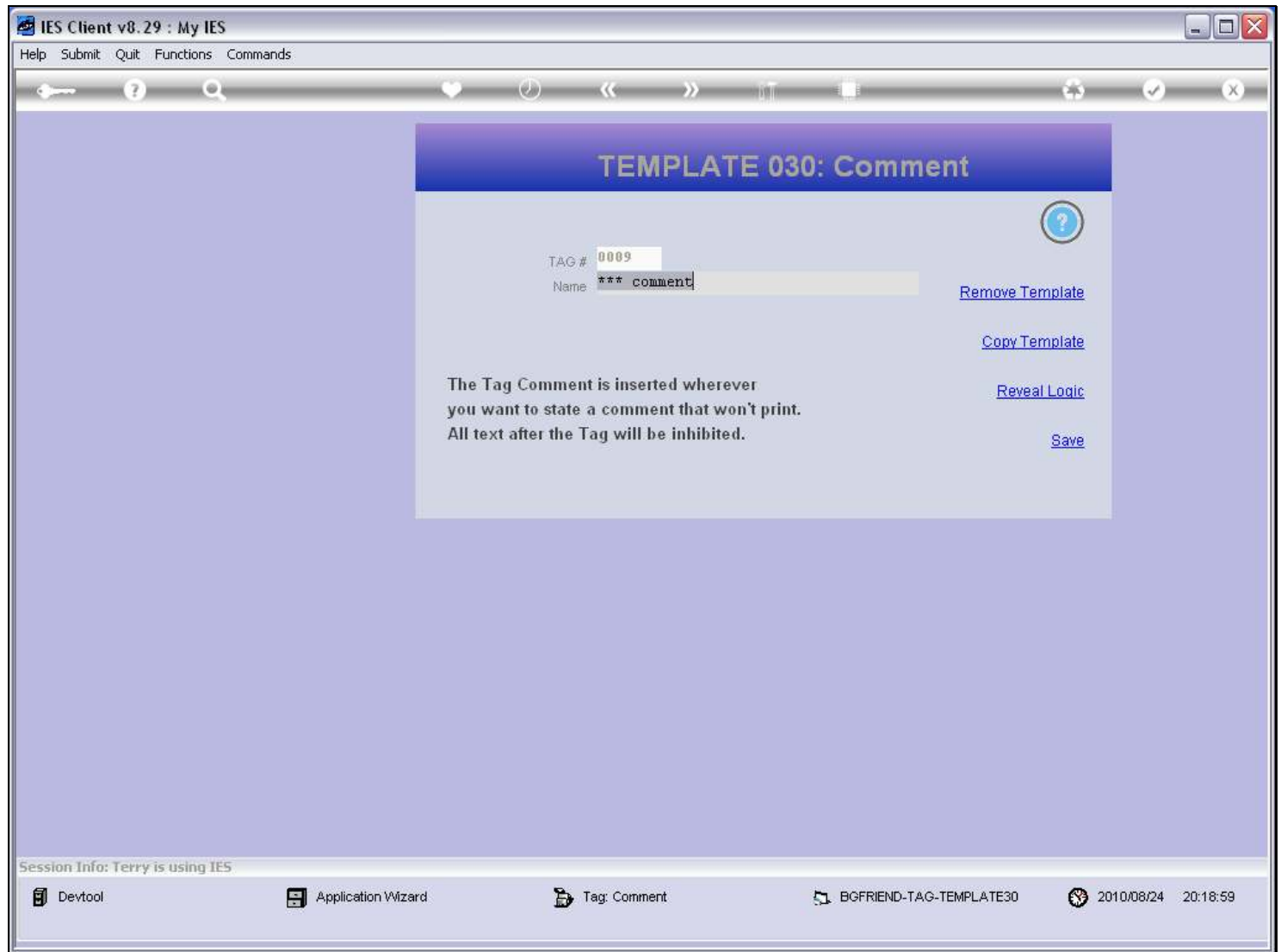
**COMMENT**  
This tag is commonly used to insert a comment on the Report Layout, but that should never print during Report execution.

Note: A comment should always be alone on the line, and not following some content that should print on the same line. The comment tag suppresses the entire line.

On the right side of the window, there is a "Next" link, a "Make a copy -" button with a "Text Copy" link, a "Search Phrase" input field, and a "Search" link. At the bottom, the "Doc Key" is displayed as "bgfriend-tag-template30".

**Slide notes**

**Slide 24 - Slide 24****Slide notes**

**Slide 25 - Slide 25****Slide notes**

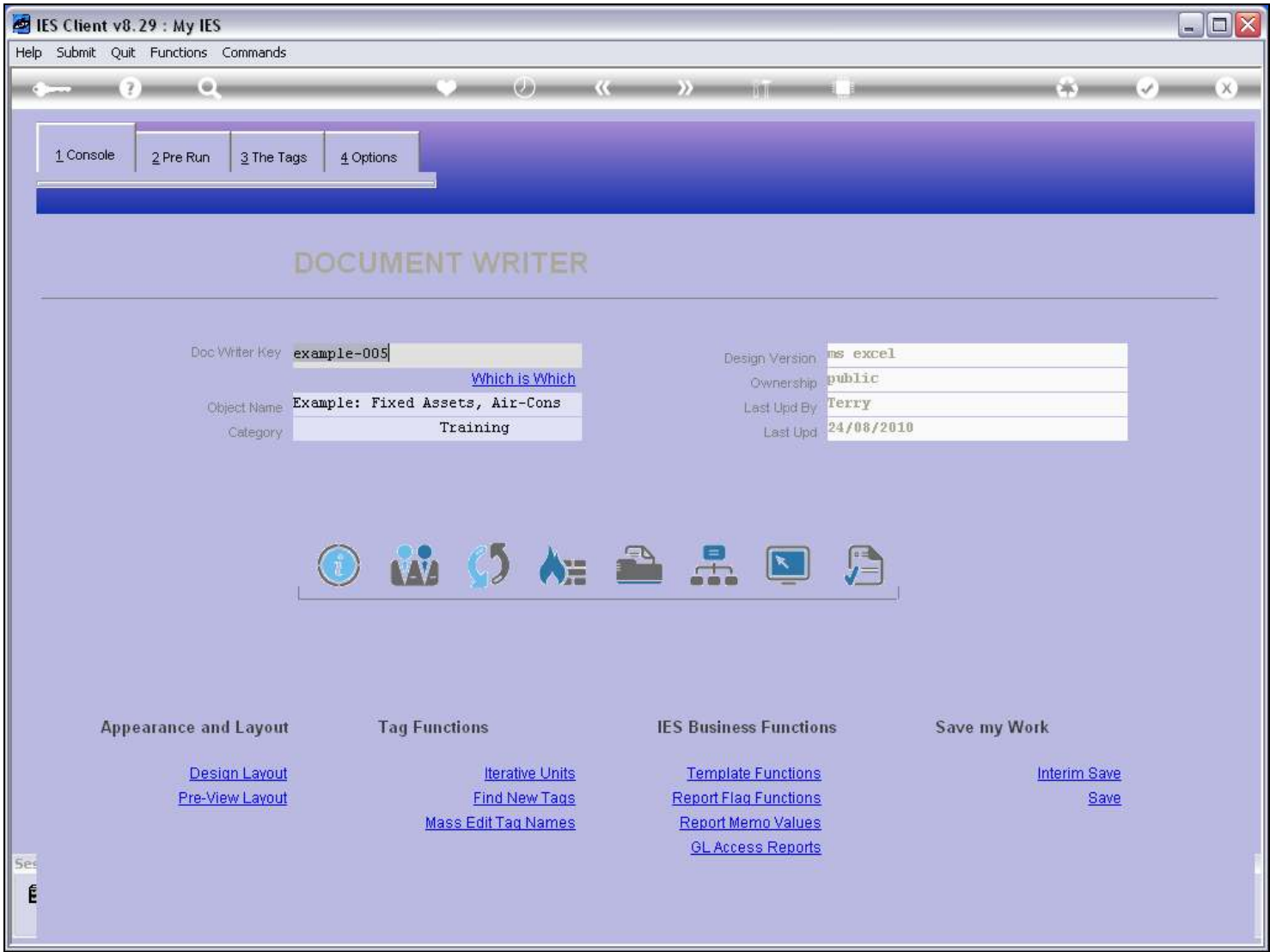
[illegible]

## Page 26 of 41

[illegible]

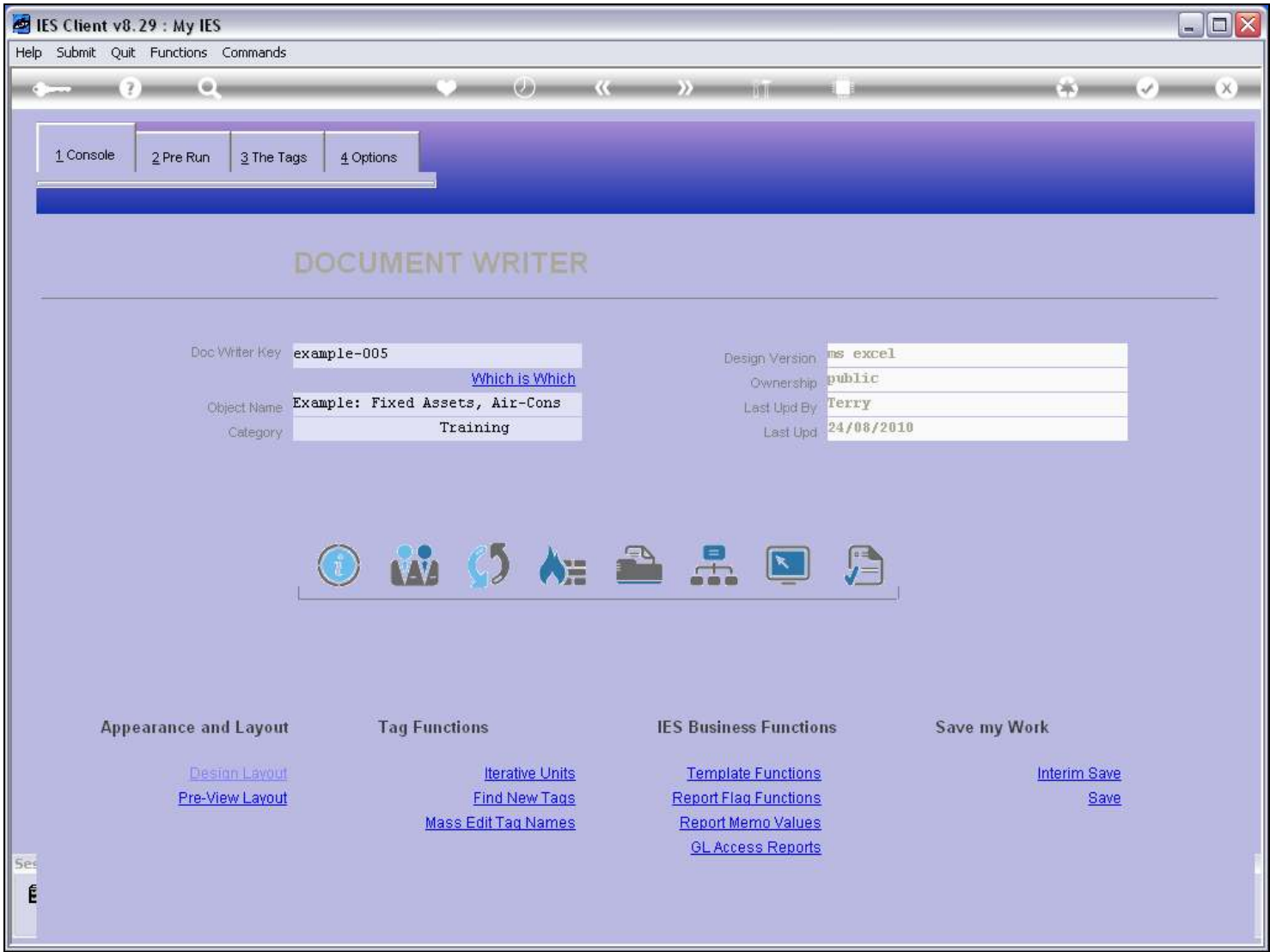
## Page 27 of 41

Slide 28 - Slide 28



Slide notes

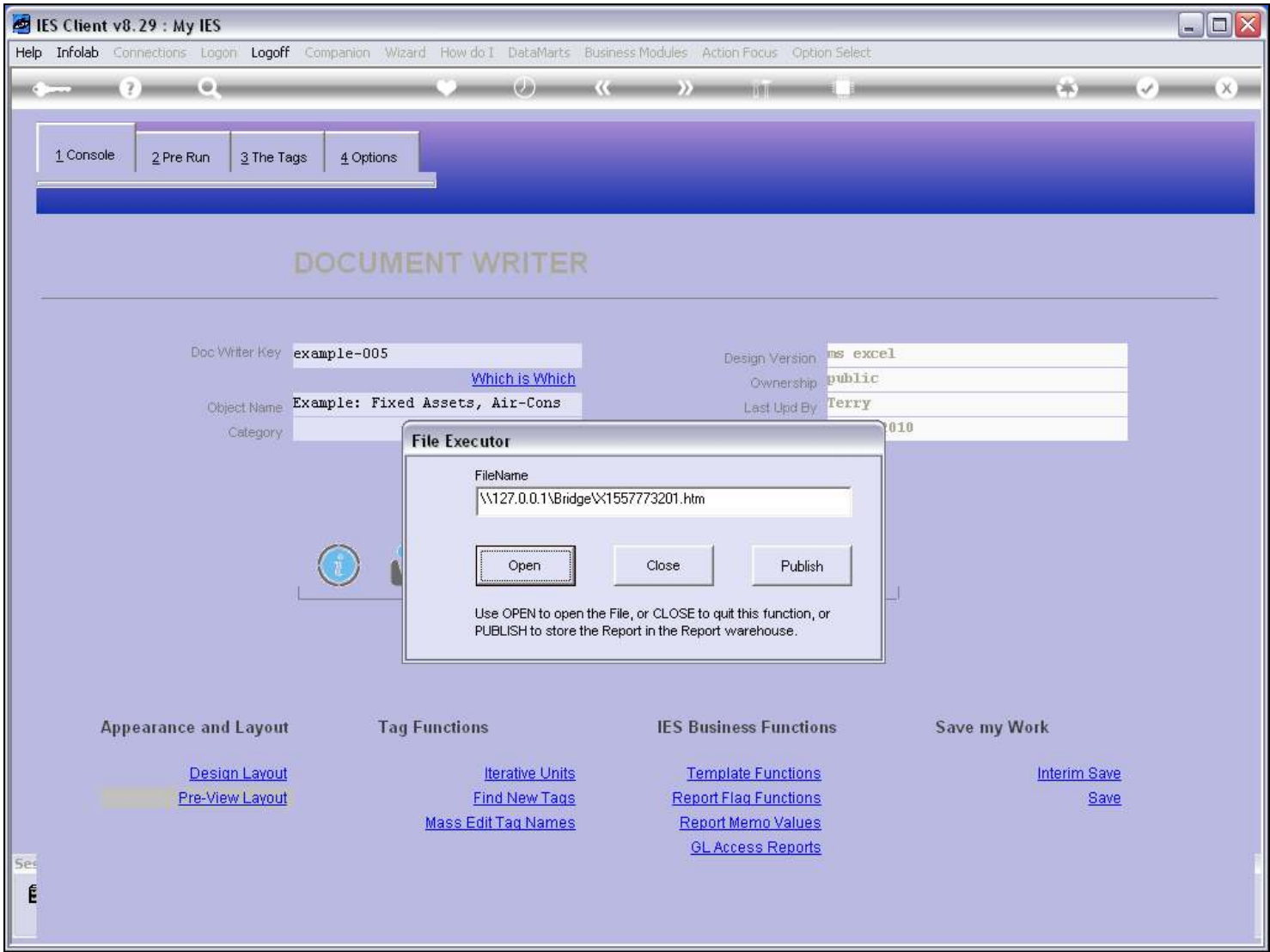
Slide 29 - Slide 29



Slide notes

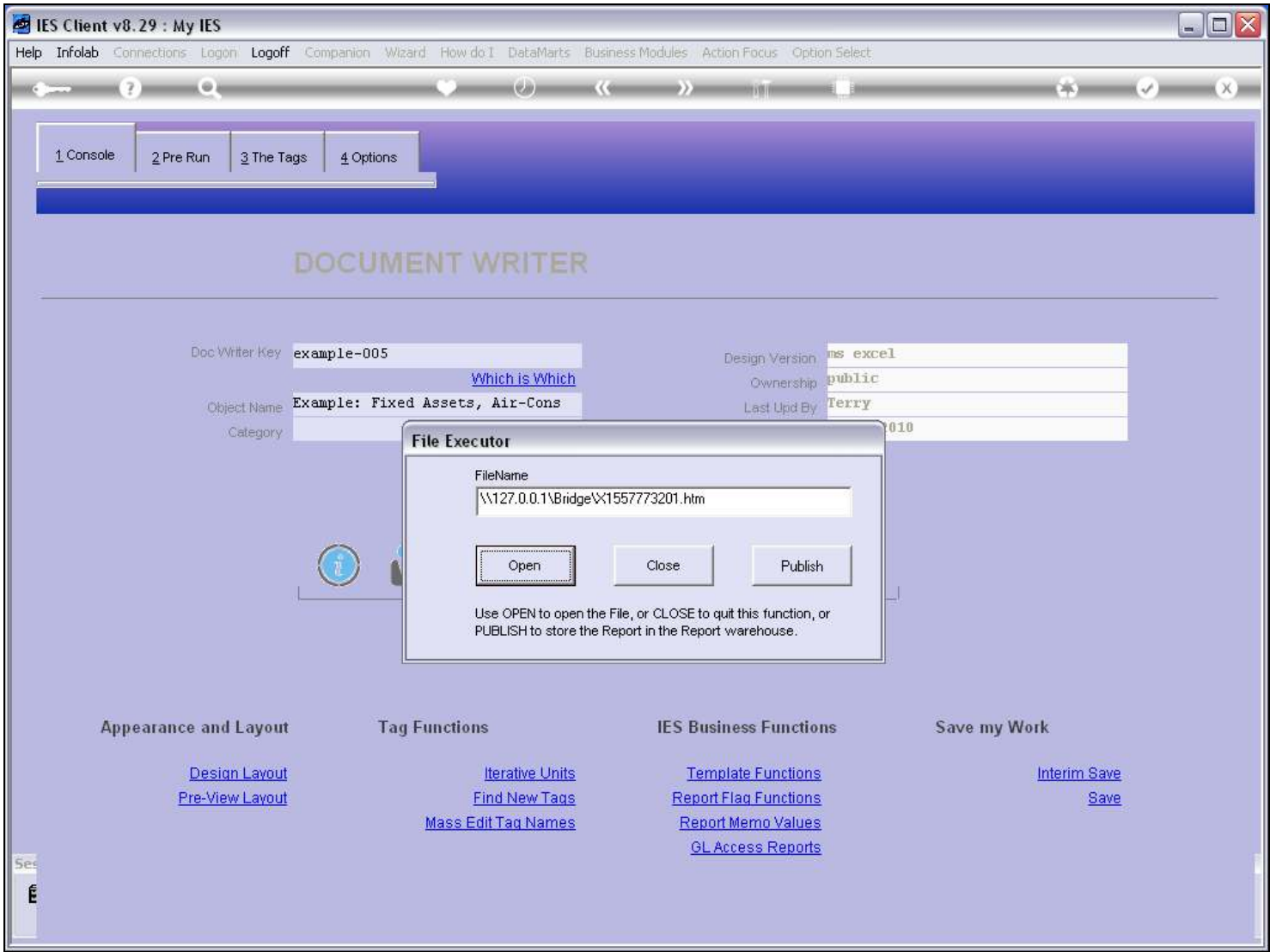


Slide 30 - Slide 30



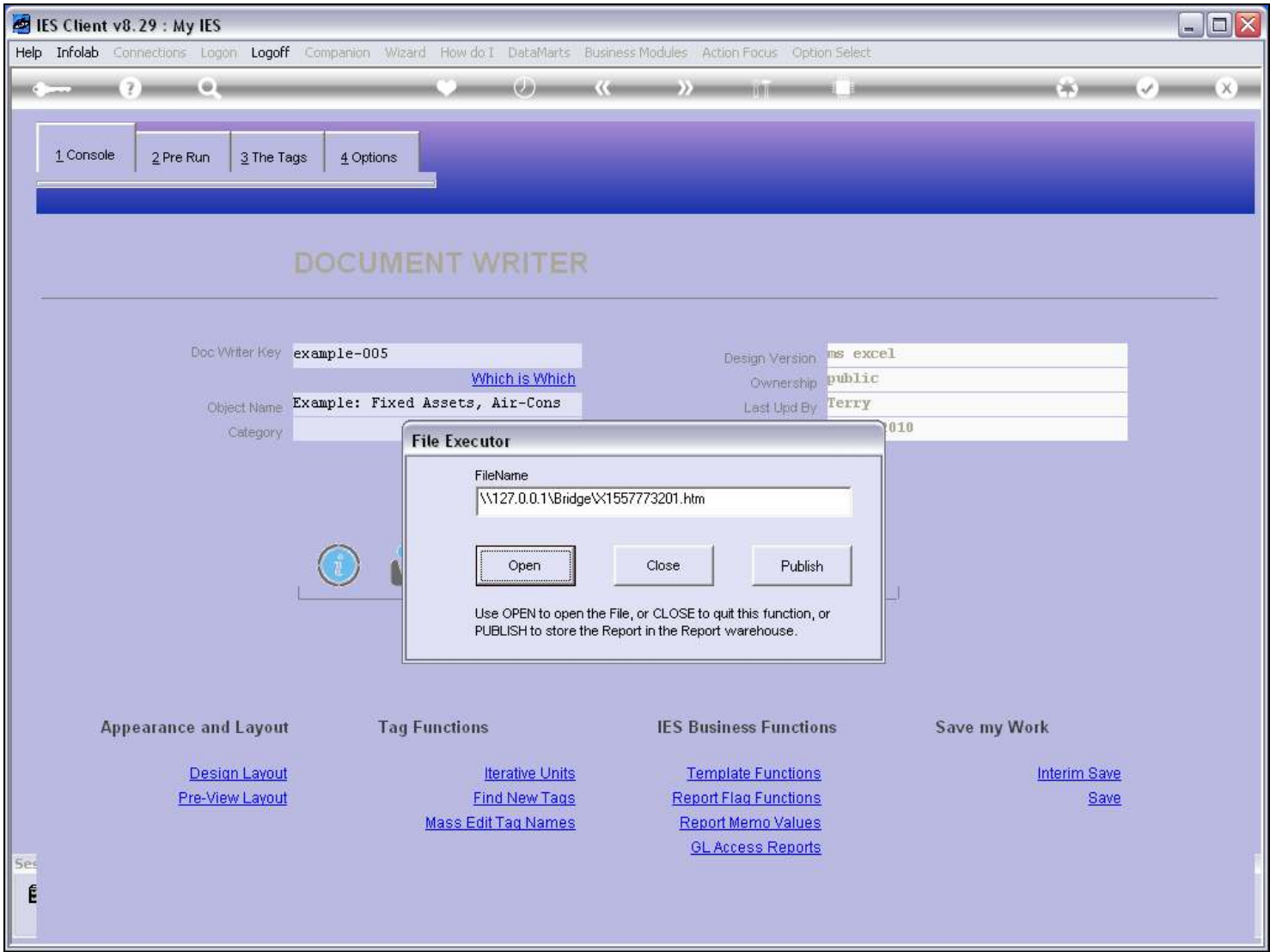
Slide notes

Slide 31 - Slide 31



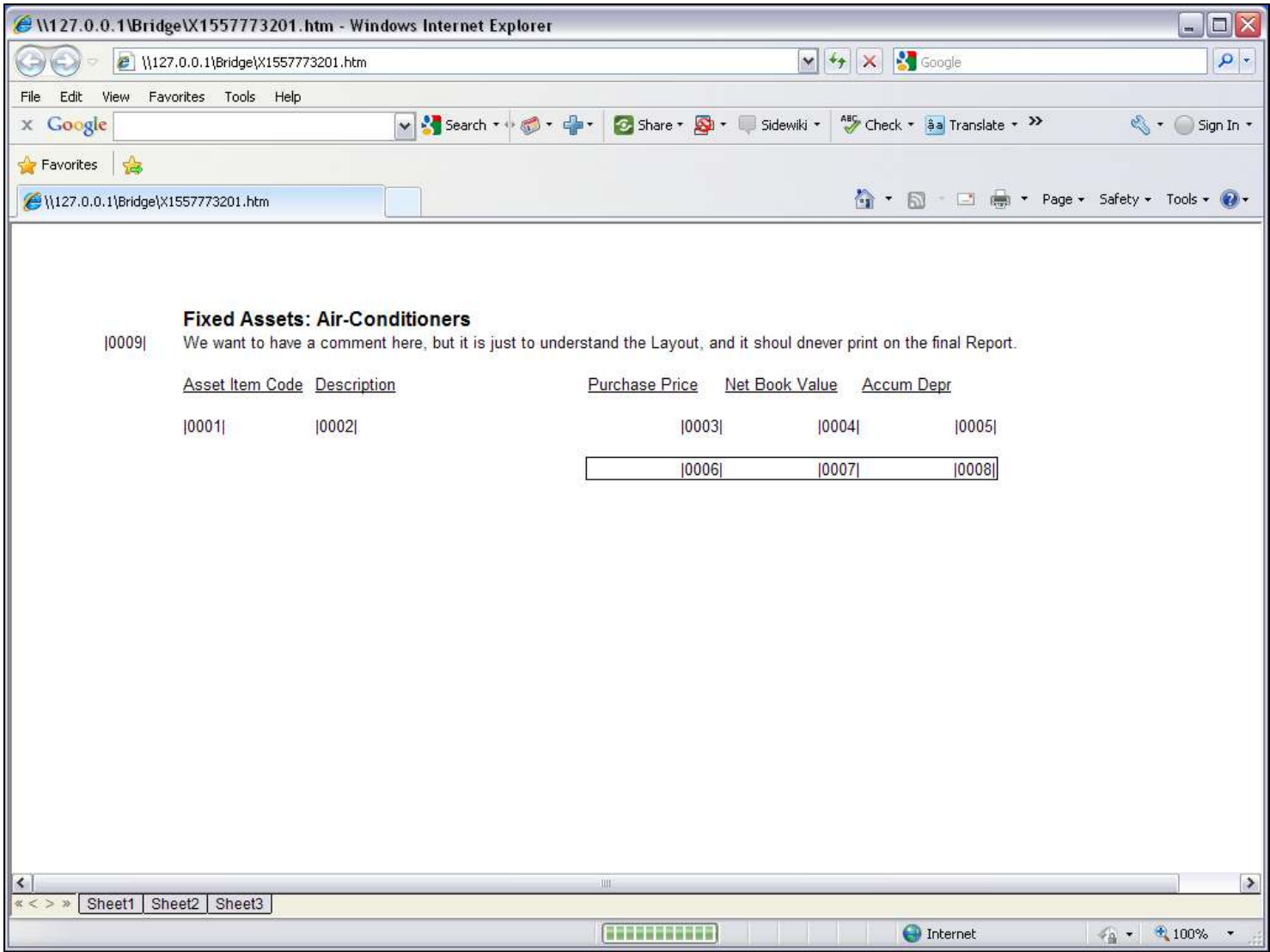
Slide notes

Slide 32 - Slide 32



Slide notes

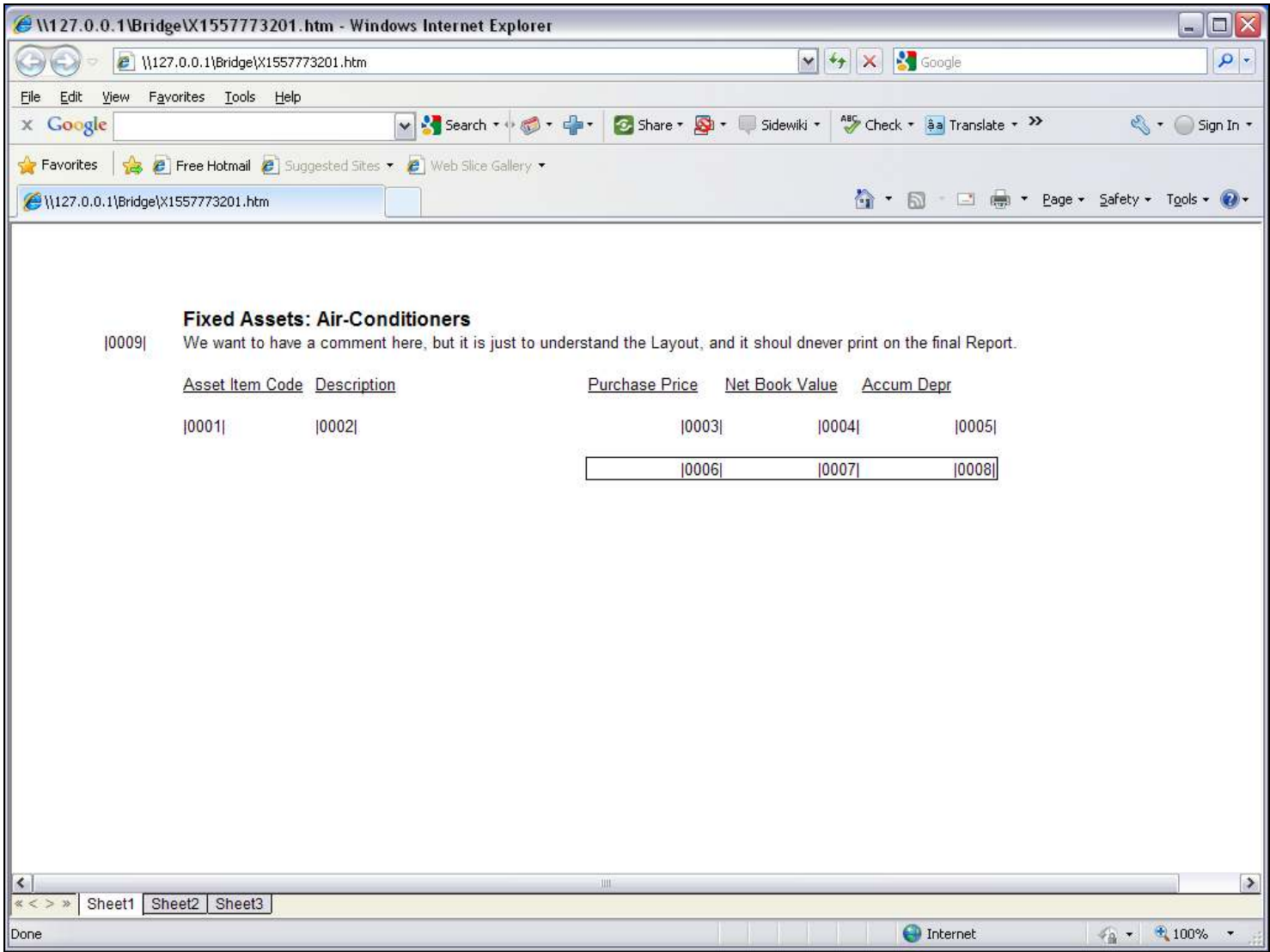
Slide 33 - Slide 33



Slide notes

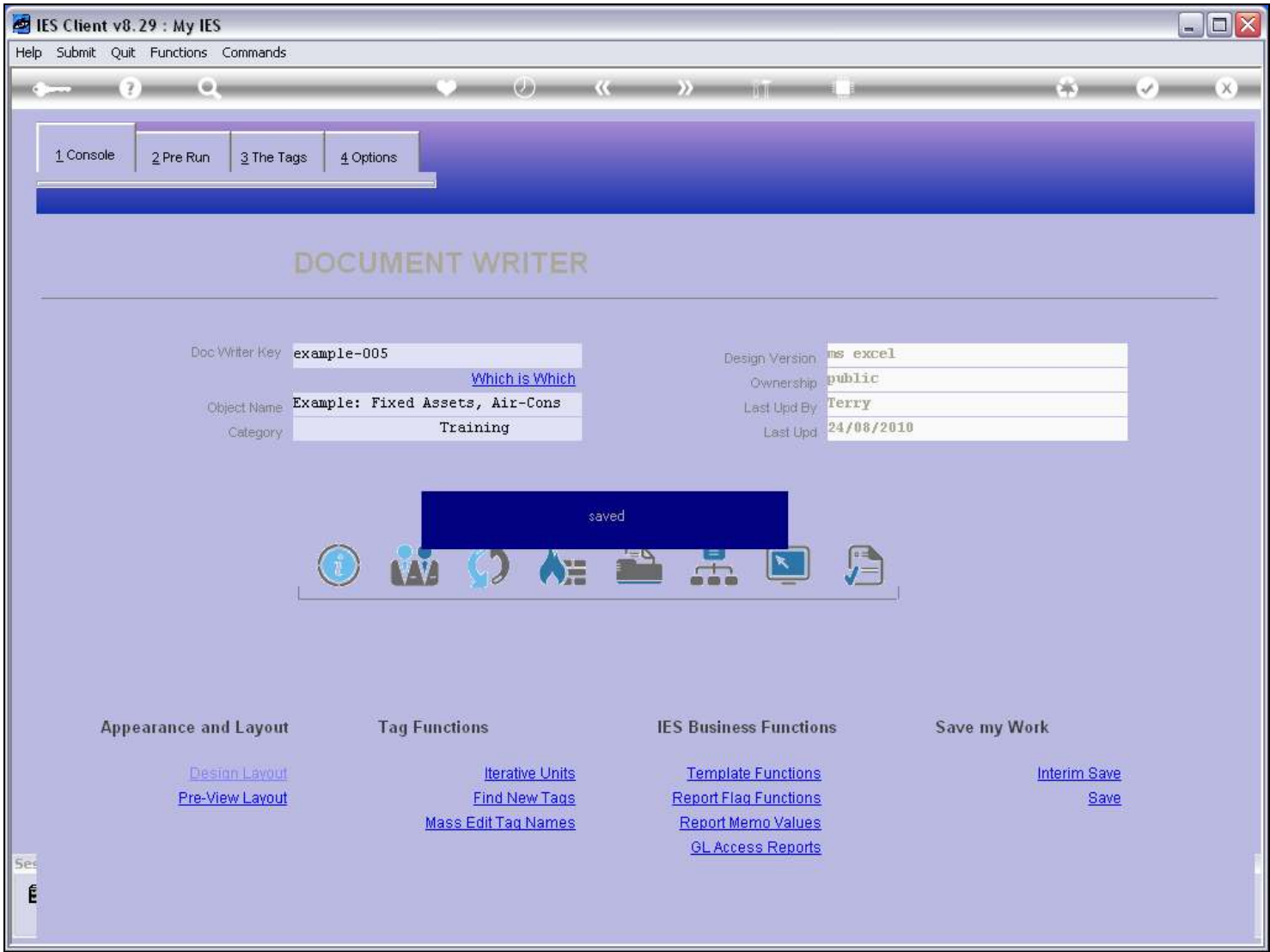
When we look at the Layout, the Comment can be seen.

Slide 34 - Slide 34



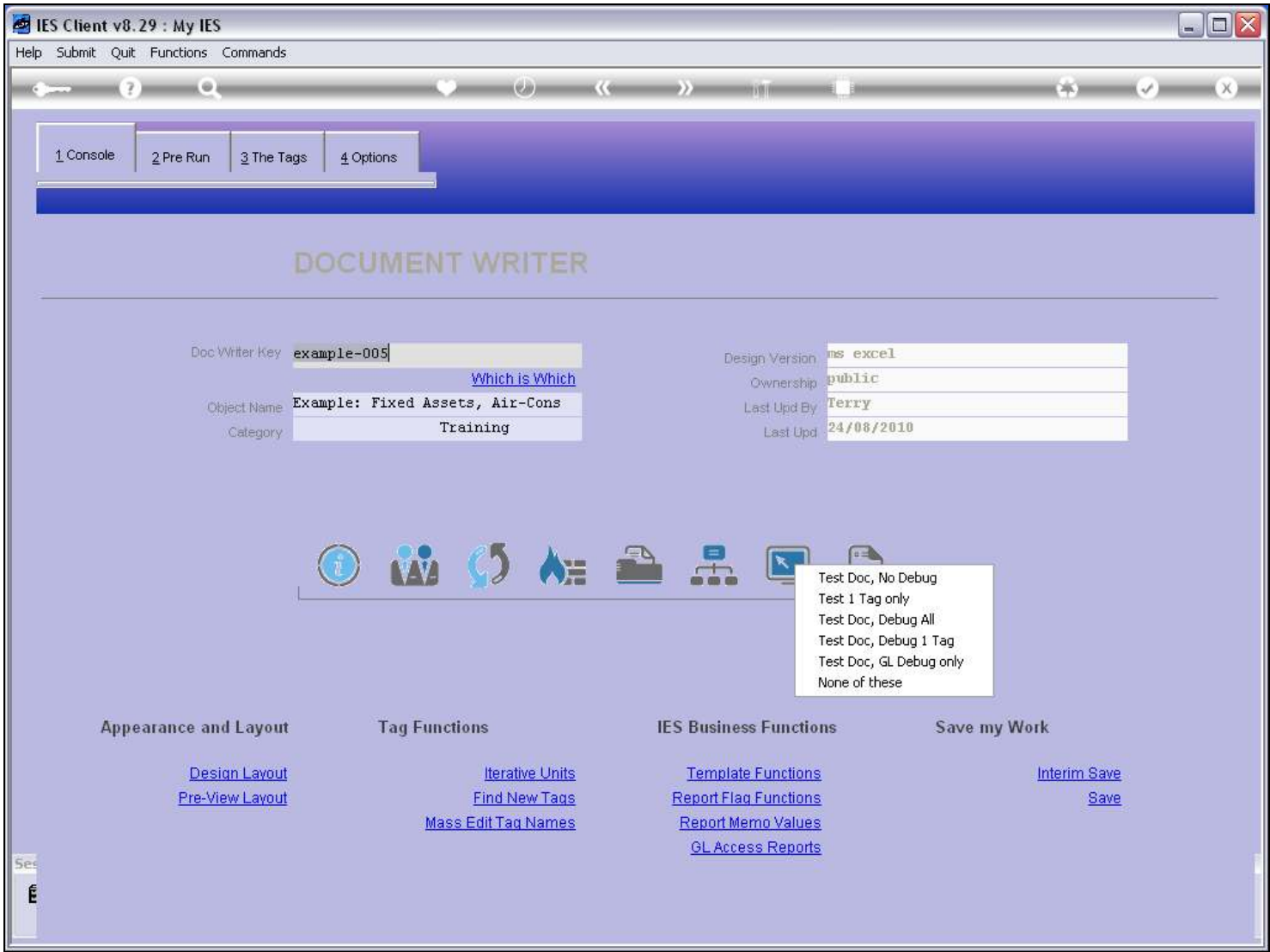
Slide notes

Slide 35 - Slide 35



Slide notes

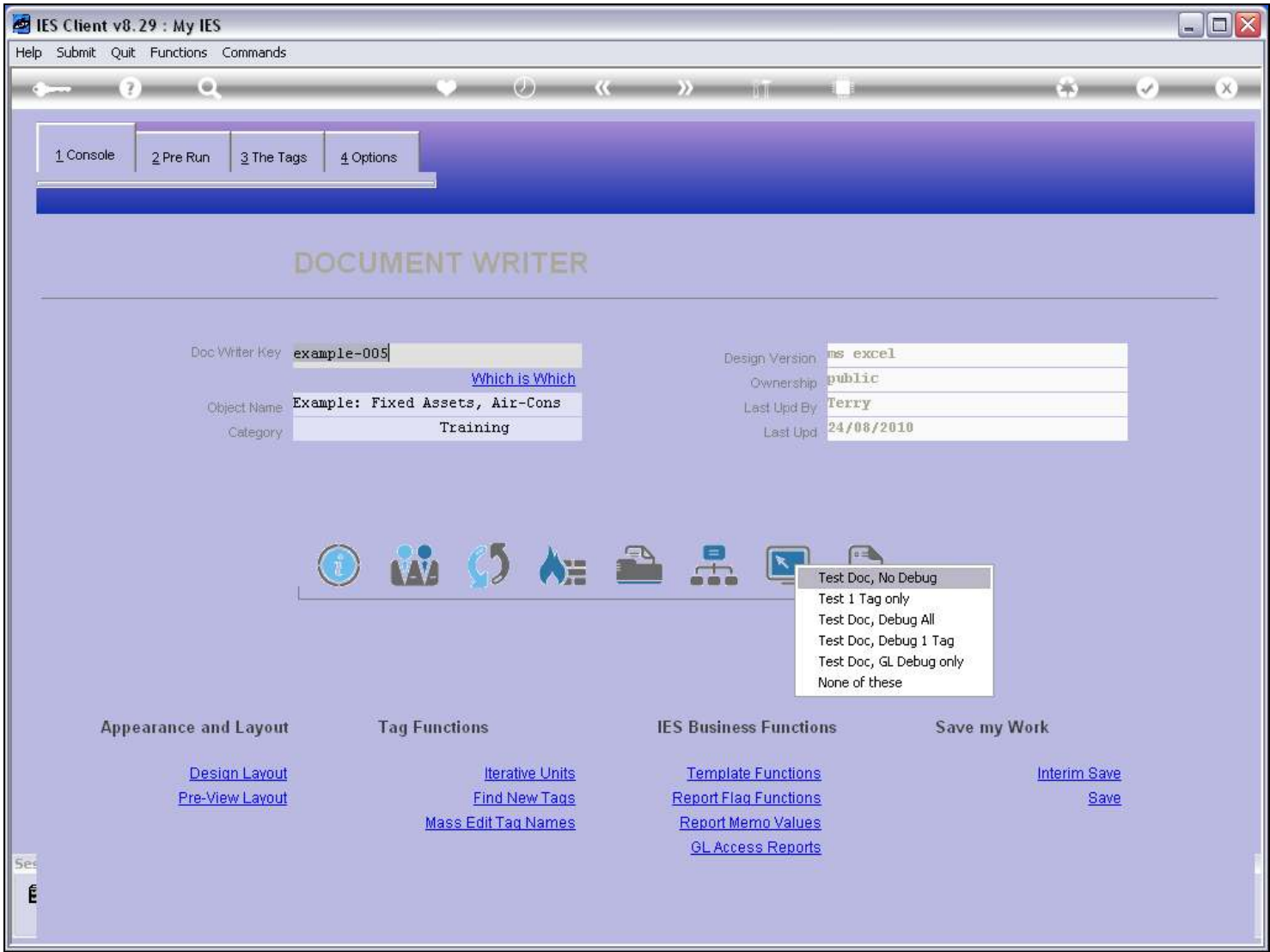
Slide 36 - Slide 36



Slide notes

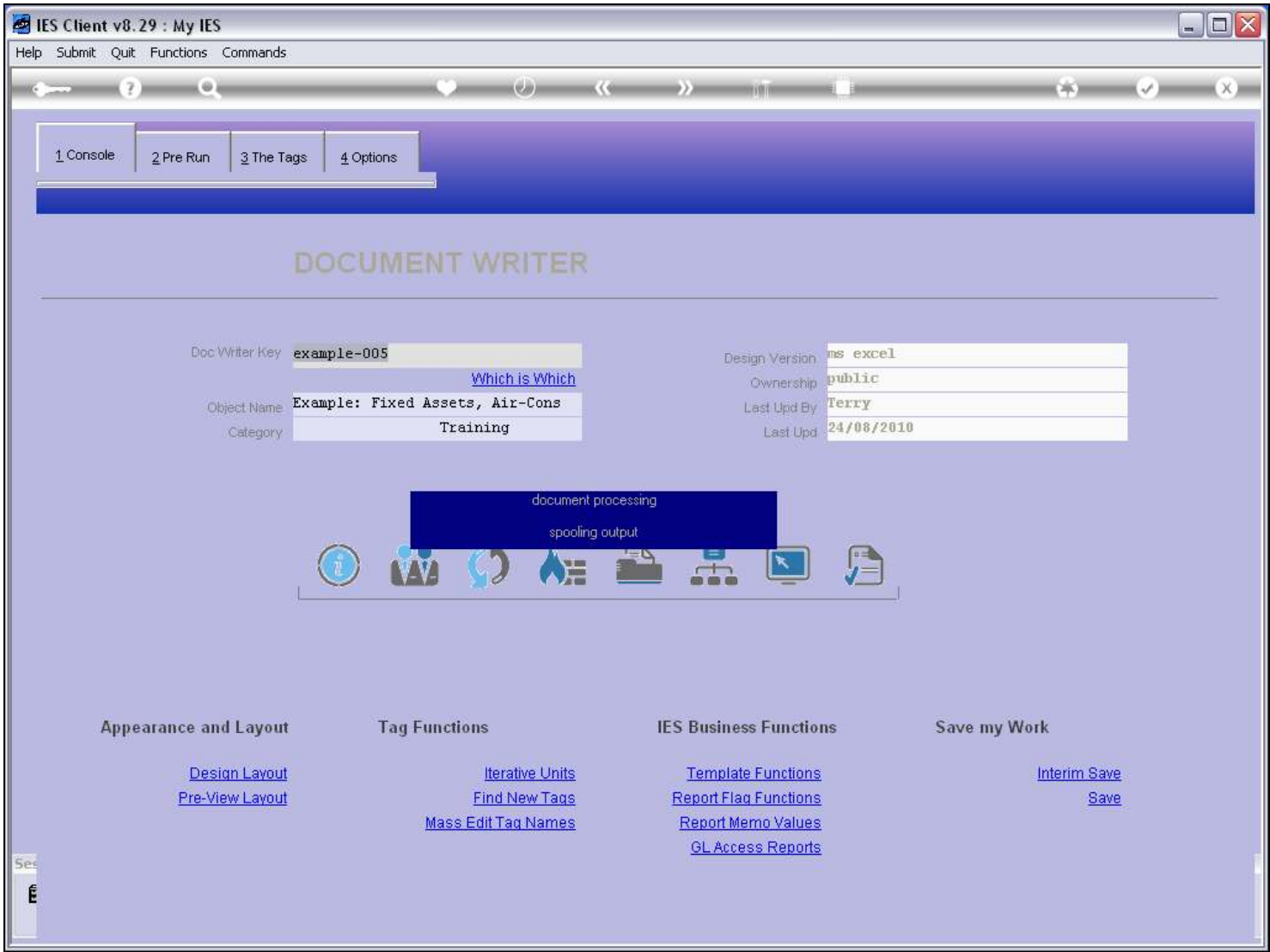


Slide 37 - Slide 37



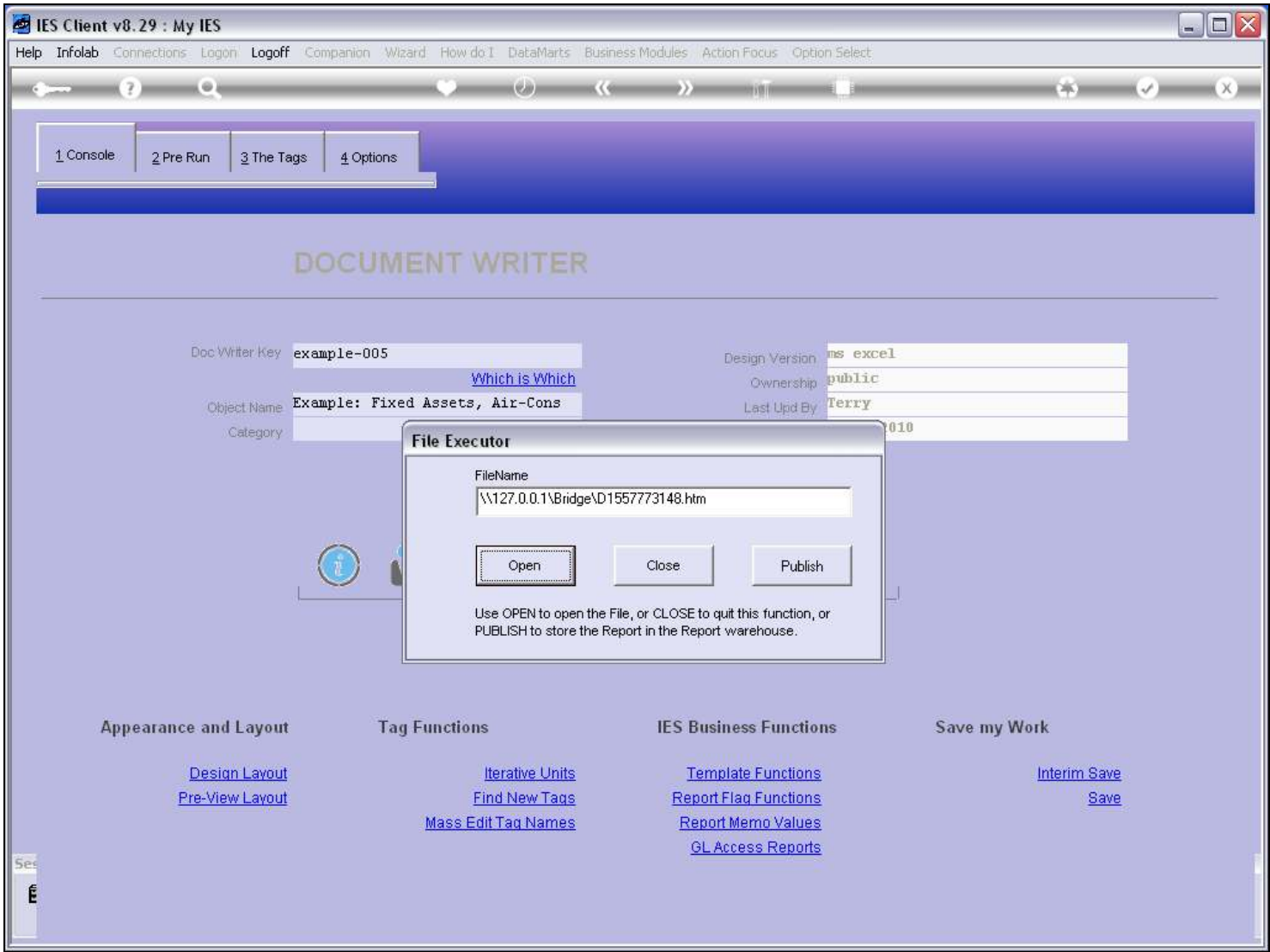
Slide notes

Slide 38 - Slide 38



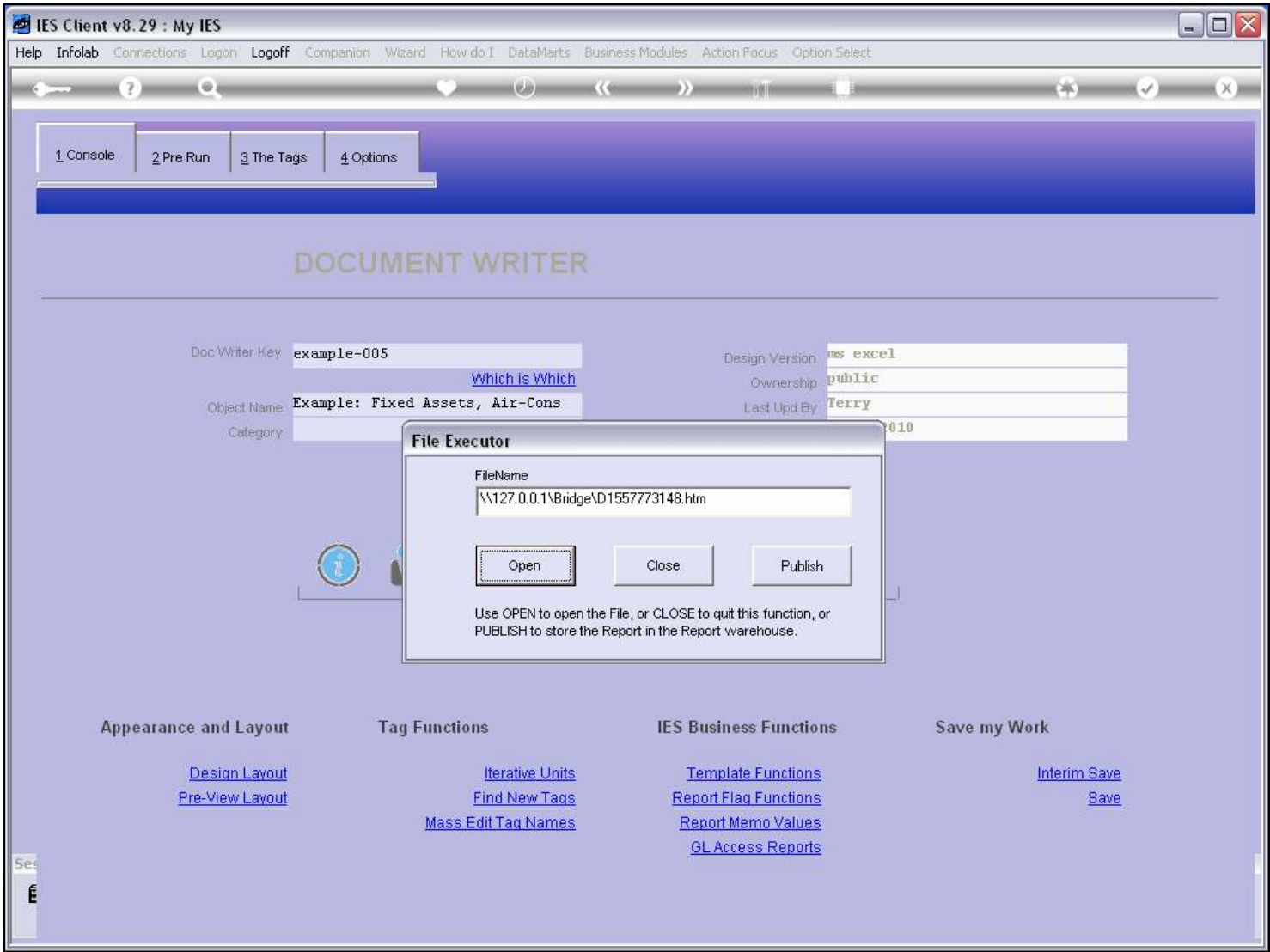
Slide notes

Slide 39 - Slide 39



Slide notes

Slide 40 - Slide 40



Slide notes

**Slide 41 - Slide 41**

**Fixed Assets: Air-Conditioners**

<u>Asset Item Code</u>	<u>Description</u>	<u>Purchase Price</u>	<u>Net Book Value</u>	<u>Accum Depr</u>
200-10-01	AC SPLIT PANASONIC CS 12DKH	2,500	1,945	555
200-10-02	AC SPLIT PANASONIC CS 12DKH	1,500	1,500	0
200-11-01	AC SPLIT PANASONIC CS 12DKH	2,500	1,945	555
200-12-01	AC SPLIT PANASONIC CS 12DKH	2,600	2,023	577
200-13-01	AC SPLIT DAIKIN 1,5PK INVERTER	2,600	2,023	577
200-14-01	AC SPLIT DAIKIN 1,5PK INVERTER	2,400	1,867	533
200-15-01	AC SPLIT DAIKIN 1,5PK INVERTER	2,400	1,867	533
200-17-01	AIR CONDITIONER, LG	2,400	1,877	523
200-18-01	AIR CONDITIONER, LG	2,400	1,867	533
		21,300	16,914	4,386

**Slide notes**

But when we produce the Report itself, then the Comment is nowhere to be seen.