

Slide 1 - Slide 1

W127.0.0.1\Bridge\X1558131740.htm - Windows Internet Explorer

\\127.0.0.1\Bridge\X1558131740.htm

File Edit View Favorites Tools Help

Google Search Share Sidewiki Check Translate Sign In

Favorites Free Hotmail Suggested Sites Web Slice Gallery

\\127.0.0.1\Bridge\X1558131740.htm

Page Safety Tools

[0001] Profit and Loss (Income Statement) for [0002]					
	Actual Current	Budget	Actual YTD	Budget YTD	Annual Budget
Revenue					
Stock Sales	[0014]	[0015]	[0016]	[0017]	[0018]
Other	[0019]	[0020]	[0021]	[0022]	[0023]
Total Revenue	[0024]	[0025]	[0026]	[0027]	[0028]
Costs					
Rent and Utilities	[0029]	[0030]	[0031]	[0032]	[0033]
Bad Debts	[0034]	[0035]	[0036]	[0037]	[0038]
Staff Costs	[0039]	[0040]	[0041]	[0042]	[0043]
Office Costs	[0044]	[0045]	[0046]	[0047]	[0048]
Audit Fees	[0049]	[0050]	[0051]	[0052]	[0053]
Computer Systems	[0054]	[0055]	[0056]	[0057]	[0058]
Equipment Maintenance	[0059]	[0060]	[0061]	[0062]	[0063]
Sundry Expenses	[0064]	[0065]	[0066]	[0067]	[0068]
Total Cost of Sales	[0069]	[0070]	[0071]	[0072]	[0073]
[0084]					
[0085] Gross Profit	[0074]	[0075]	[0076]	[0077]	[0078]
					[0086]
[0087] Gross Loss	[0079]	[0080]	[0081]	[0082]	[0083]
					[0088]
[0097] [0091] [0092] [0093] [0094] [0095] [0096] [0098]					

Done Internet 100%

Slide notes

In a Report layout, we often have Tags that are totals derived from other Tags.

Slide 2 - Slide 2

W127.0.0.1\Bridge\X1558131740.htm - Windows Internet Explorer

\\127.0.0.1\Bridge\X1558131740.htm

File Edit View Favorites Tools Help

Google Search Share Sidewiki Check Translate Sign In

Favorites Free Hotmail Suggested Sites Web Slice Gallery

\\127.0.0.1\Bridge\X1558131740.htm

Page Safety Tools

[0001] Profit and Loss (Income Statement) for [0002]					
	Actual Current	Budget	Actual YTD	Budget YTD	Annual Budget
Revenue:					
Stock Sales	[0014]	[0015]	[0016]	[0017]	[0018]
Other	[0019]	[0020]	[0021]	[0022]	[0023]
Total Revenue	[0024]	[0025]	[0026]	[0027]	[0028]
Costs					
Rent and Utilities	[0029]	[0030]	[0031]	[0032]	[0033]
Bad Debts	[0034]	[0035]	[0036]	[0037]	[0038]
Staff Costs	[0039]	[0040]	[0041]	[0042]	[0043]
Office Costs	[0044]	[0045]	[0046]	[0047]	[0048]
Audit Fees	[0049]	[0050]	[0051]	[0052]	[0053]
Computer Systems	[0054]	[0055]	[0056]	[0057]	[0058]
Equipment Maintenance	[0059]	[0060]	[0061]	[0062]	[0063]
Sundry Expenses	[0064]	[0065]	[0066]	[0067]	[0068]
Total Cost of Sales	[0069]	[0070]	[0071]	[0072]	[0073]
[0084]					
[0085]Gross Profit	[0074]	[0075]	[0076]	[0077]	[0078]
					[0086]
[0087]Gross Loss	[0079]	[0080]	[0081]	[0082]	[0083]
					[0088]
[0097] [0091] [0092] [0093] [0094] [0095] [0096] [0098]					

Done Internet 100%

Slide notes

Slide 3 - Slide 3

W127.0.0.1\Bridge\X1558131740.htm - Windows Internet Explorer

W127.0.0.1\Bridge\X1558131740.htm

File Edit View Favorites Tools Help

Google Search Share Sidewiki Check Translate Sign In

Favorites Free Hotmail Suggested Sites Web Slice Gallery

W127.0.0.1\Bridge\X1558131740.htm

Page Safety Tools

[0001] Profit and Loss (Income Statement) for [0002]					
	Actual Current	Budget	Actual YTD	Budget YTD	Annual Budget
Revenue:					
Stock Sales	[0014]	[0015]	[0016]	[0017]	[0018]
Other	[0019]	[0020]	[0021]	[0022]	[0023]
Total Revenue	[0024]	[0025]	[0026]	[0027]	[0028]
Costs					
Rent and Utilities	[0029]	[0030]	[0031]	[0032]	[0033]
Bad Debts	[0034]	[0035]	[0036]	[0037]	[0038]
Staff Costs	[0039]	[0040]	[0041]	[0042]	[0043]
Office Costs	[0044]	[0045]	[0046]	[0047]	[0048]
Audit Fees	[0049]	[0050]	[0051]	[0052]	[0053]
Computer Systems	[0054]	[0055]	[0056]	[0057]	[0058]
Equipment Maintenance	[0059]	[0060]	[0061]	[0062]	[0063]
Sundry Expenses	[0064]	[0065]	[0066]	[0067]	[0068]
Total Cost of Sales	[0069]	[0070]	[0071]	[0072]	[0073]
[0084]					
[0085] Gross Profit	[0074]	[0075]	[0076]	[0077]	[0078]
					[0086]
[0087] Gross Loss	[0079]	[0080]	[0081]	[0082]	[0083]
					[0088]
[0097] [0091] [0092] [0093] [0094] [0095] [0096] [0098]					

Done Internet 100%

Slide notes

Slide 4 - Slide 4

W127.0.0.1\Bridge\X1558131740.htm - Windows Internet Explorer

W127.0.0.1\Bridge\X1558131740.htm

File Edit View Favorites Tools Help

Google Search Share Sidewiki Check Translate Sign In

Favorites Free Hotmail Suggested Sites Web Slice Gallery

W127.0.0.1\Bridge\X1558131740.htm

Page Safety Tools

[0001] Profit and Loss (Income Statement) for [0002]					
	Actual Current	Budget	Actual YTD	Budget YTD	Annual Budget
Revenue:					
Stock Sales	[0014]	[0015]	[0016]	[0017]	[0018]
Other	[0019]	[0020]	[0021]	[0022]	[0023]
Total Revenue	[0024]	[0025]	[0026]	[0027]	[0028]
Costs					
Rent and Utilities	[0029]	[0030]	[0031]	[0032]	[0033]
Bad Debts	[0034]	[0035]	[0036]	[0037]	[0038]
Staff Costs	[0039]	[0040]	[0041]	[0042]	[0043]
Office Costs	[0044]	[0045]	[0046]	[0047]	[0048]
Audit Fees	[0049]	[0050]	[0051]	[0052]	[0053]
Computer Systems	[0054]	[0055]	[0056]	[0057]	[0058]
Equipment Maintenance	[0059]	[0060]	[0061]	[0062]	[0063]
Sundry Expenses	[0064]	[0065]	[0066]	[0067]	[0068]
Total Cost of Sales	[0069]	[0070]	[0071]	[0072]	[0073]
[0084]					
[0085]Gross Profit	[0074]	[0075]	[0076]	[0077]	[0078]
					[0086]
[0087]Gross Loss	[0079]	[0080]	[0081]	[0082]	[0083]
					[0088]
[0097] [0091] [0092] [0093] [0094] [0095] [0096] [0098]					

Done Internet 100%

Slide notes

Slide 5 - Slide 5

W127.0.0.1\Bridge\X1558131740.htm - Windows Internet Explorer

W127.0.0.1\Bridge\X1558131740.htm

File Edit View Favorites Tools Help

Google Search Share Sidewiki Check Translate Sign In

Favorites Free Hotmail Suggested Sites Web Slice Gallery

W127.0.0.1\Bridge\X1558131740.htm

Page Safety Tools

[0001] Profit and Loss (Income Statement) for [0002]					
	Actual Current	Budget	Actual YTD	Budget YTD	Annual Budget
Revenue:					
Stock Sales	[0014]	[0015]	[0016]	[0017]	[0018]
Other	[0019]	[0020]	[0021]	[0022]	[0023]
Total Revenue	[0024]	[0025]	[0026]	[0027]	[0028]
Costs					
Rent and Utilities	[0029]	[0030]	[0031]	[0032]	[0033]
Bad Debts	[0034]	[0035]	[0036]	[0037]	[0038]
Staff Costs	[0039]	[0040]	[0041]	[0042]	[0043]
Office Costs	[0044]	[0045]	[0046]	[0047]	[0048]
Audit Fees	[0049]	[0050]	[0051]	[0052]	[0053]
Computer Systems	[0054]	[0055]	[0056]	[0057]	[0058]
Equipment Maintenance	[0059]	[0060]	[0061]	[0062]	[0063]
Sundry Expenses	[0064]	[0065]	[0066]	[0067]	[0068]
Total Cost of Sales	[0069]	[0070]	[0071]	[0072]	[0073]
[0084]					
[0085]Gross Profit	[0074]	[0075]	[0076]	[0077]	[0078]
					[0086]
[0087]Gross Loss	[0079]	[0080]	[0081]	[0082]	[0083]
					[0088]
[0097] [0091] [0092] [0093] [0094] [0095] [0096] [0098]					

Done Internet 100%

Slide notes

Slide 6 - Slide 6

IES Client v8.29 : My IES

Help Submit Quit Functions Commands

1 Console 2 Pre Run 3 The Tags 4 Options

Tag Result Macros: -

	>>> Tags	Value Names	Exec It
1	0001	Co Name	1
2	0002	Period	1
3	0014	Stock Sales: Cur	1
4	0015	Stock Sales: Bud	1
5	0016	Stock Sales: YTD	1
6	0017	Stock Sales: YTD Bud	1
7	0018	Stock Sales: Ann Bud	1
8	0019	Other: Cur	1
9	0020	Other: Bud	1
10	0021	Other: YTD	1
11	0022	Other: YTD Bud	1
12	0023	Other: Ann Bud	1
13	0024	Tot Revenue: Cur	1
14	0025	Tot Revenue: Bud	1
15	0026	Tot Revenue: YTD	1
16	0027	Tot Revenue: YTD Bud	1
17	0028	Tot Revenue: Ann Bud	1
18	0029	Rent: Cur	1
19	0030	Rent: Bud	1
20	0031	Rent: YTD	1
21	0032	Rent: YTD Bud	1
22	0033	Rent: Ann Bud	1
23	0034	Bad Debts: Cur	1
24	0035	Bad Debts: Bud	1
25	0036	Bad Debts: YTD	1

Where is that tag !

[Select from Tag List](#)

[Search for Tag Number](#)

[Search for Tag Name](#)

Current Tag Focus: -

Row	1
Tag #	0001
Name	Co Name

[Open the Tag Macro](#)

Nex Pre Add Ins Ed Del

Slide notes

Slide 7 - Slide 7



Slide notes

Slide 8 - Slide 8

IES Client v8.29 : My IES

Help Submit Quit Functions Commands

1 Console2 Pre Run3 The Tags4 Options

Tag Result Macros: -

	>>> Tags	Value Names	Exec It
1	0001	Co Name	1
2	0002	Period	1
3	0014	Stock Sales: Cur	1
4	0015	Stock Sales: Bud	1
5	0016	Stock Sales: YTD	1
6	0017	Stock Sales: YTD Bud	1
7	0018	Stock Sales: Ann Bud	1
8	0019	Other: Cur	1
9	0020	Other: Bud	1
10	0021	Other: YTD	1
11	0022	Other: YTD Bud	1
12	0023	Other: Ann Bud	1
13	0024	Tot Revenue: Cur	1
14	0025	Tot Revenue: Bud	1
15	0026	Tot Revenue: YTD	1
16	0027	Tot Revenue: YTD Bud	1
17	0028	Tot Revenue: Ann Bud	1
18	0029	Rent: Cur	1
19	0030	Rent: Bud	1
20	0031	Rent: YTD	1
21	0032	Rent: YTD Bud	1
22	0033	Rent: Ann Bud	1
23	0034	Bad Debts: Cur	1
24	0035	Bad Debts: Bud	1
25	0036	Bad Debts: YTD	1

See

E

NexPreAddInsEdDel

Where is that tag !

Select from Tag List

Search for Tag Number

Search for Tag Name

Current Tag Focus: -

Row1

Tag #0001

NameCo Name

Open the Tag Macro

Slide notes

Slide 9 - Slide 9

IES Client v8.29 : My IES

Help Submit Quit Functions Commands

1 Console2 Pre Run3 The Tags4 Options

Tag Result Macros: -

	>>> Tags	Value Names	Exec It
1	0001	Co Name	1
2	0002	Period	1
3	0014	Stock Sales: Cur	1
4	0015	Stock Sales: Bud	1
5	0016	Stock Sales: YTD	1
6	0017	Stock Sales: YTD Bud	1
7	0018	Stock Sales: Ann Bud	1
8	0019	Other: Cur	1
9	0020	Other: Bud	1
10	0021	Other: YTD	1
11	0022	Other: YTD Bud	1
12	0023	Other: Ann Bud	1
13	0024	Tot Revenue: Cur	1
14	0025	Tot Revenue: Bud	1
15	0026	Tot Revenue: YTD	1
16	0027	Tot Revenue: YTD Bud	1
17	0028	Tot Revenue: Ann Bud	1
18	0029	Rent: Cur	1
19	0030	Rent: Bud	1
20	0031	Rent: YTD	1
21	0032	Rent: YTD Bud	1
22	0033	Rent: Ann Bud	1
23	0034	Bad Debts: Cur	1
24	0035	Bad Debts: Bud	1
25	0036	Bad Debts: YTD	1

See

E

Nex

Pre

Add

Ins

Ed

Del

Where is that tag !

Select from Tag List

Search for Tag Number

Search for Tag Name

Current Tag Focus: -

Row

1

Tag #

0001

Name

Co Name

Open the Tag Macro

Slide notes

Slide 10 - Slide 10

The screenshot shows the IES Client v8.29 interface. The main window is titled 'TEMPLATE 003: TOTALS'. It features a menu bar with 'Help', 'Submit', 'Quit', 'Functions', and 'Commands'. Below the menu bar is a toolbar with various icons. The main content area is divided into several sections:

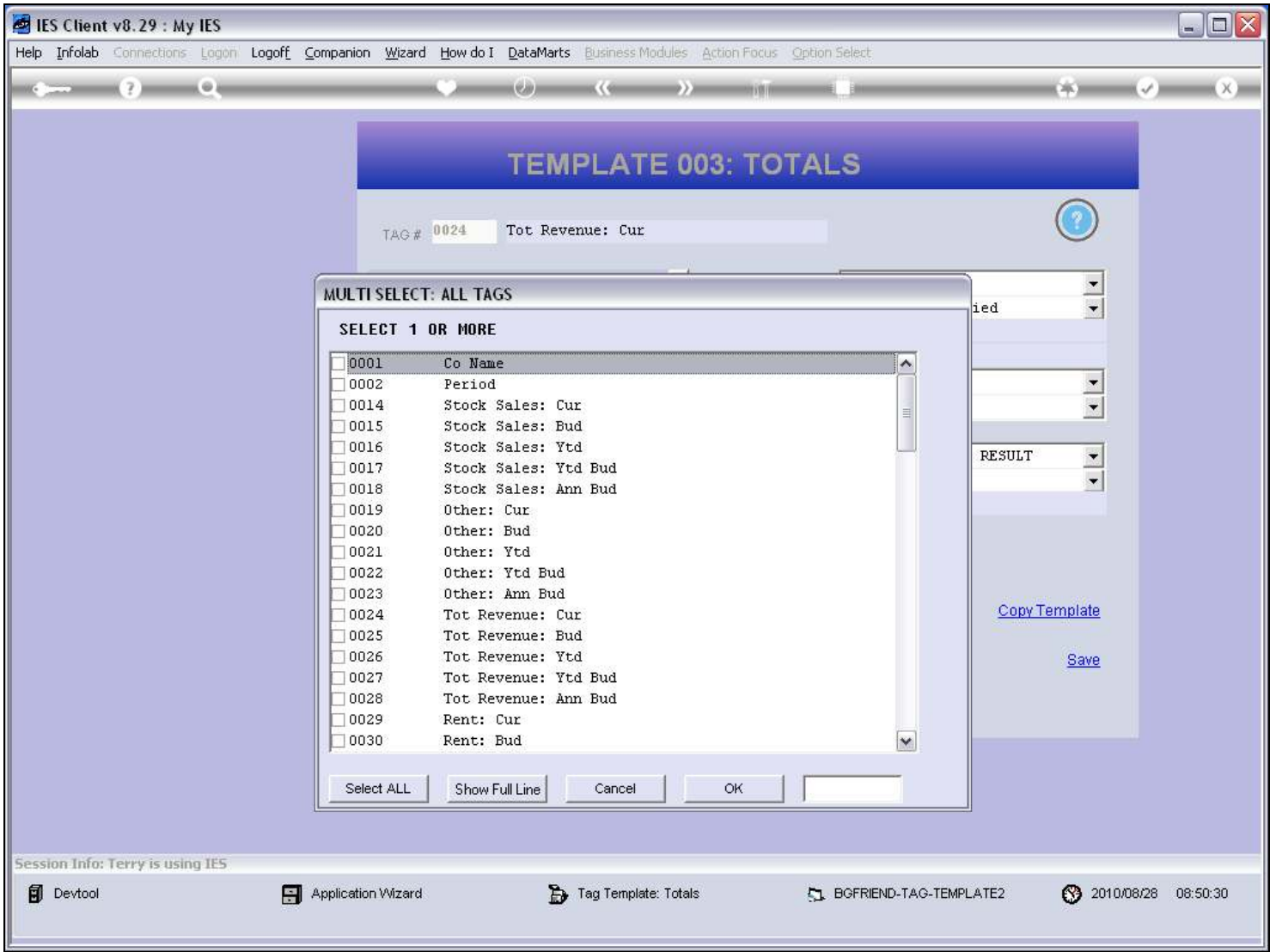
- Tag Information:** TAG # 0024, Tot Revenue: Cur
- Tags to ADD (+):** A list with two entries: 1 0014, 2 0019. Below the list is a 'Select' button.
- Tags to Subtract (-):** A list with one entry: 1. Below the list is a 'Select' button.
- Tag Addressing:** A dropdown menu set to 'relative'. Below it are fields for 'Alignment' (r: right justified), 'Result Width' (21), and 'Display Mask' (MR02,1).
- Formatting:** 'Bold?' and 'Underline?' dropdown menus, both set to 'NORMAL'.
- Tag Result:** A dropdown menu set to 'ALWAYS RETURN A RESULT'.
- Test Operator:** A dropdown menu set to '='.
- Conditional Value:** A text input field.
- Buttons:** 'Remove Template', 'Copy Template', 'Reveal Logic', and 'Save'.

The bottom status bar displays 'Session Info: Terry is using IES' and a list of active windows: 'Devtool', 'Application Wizard', 'Tag Template: Totals', and 'BGFRIEND-TAG-TEMPLATE2'. The date and time are shown as '2010/08/28 08:50:25'.

Slide notes

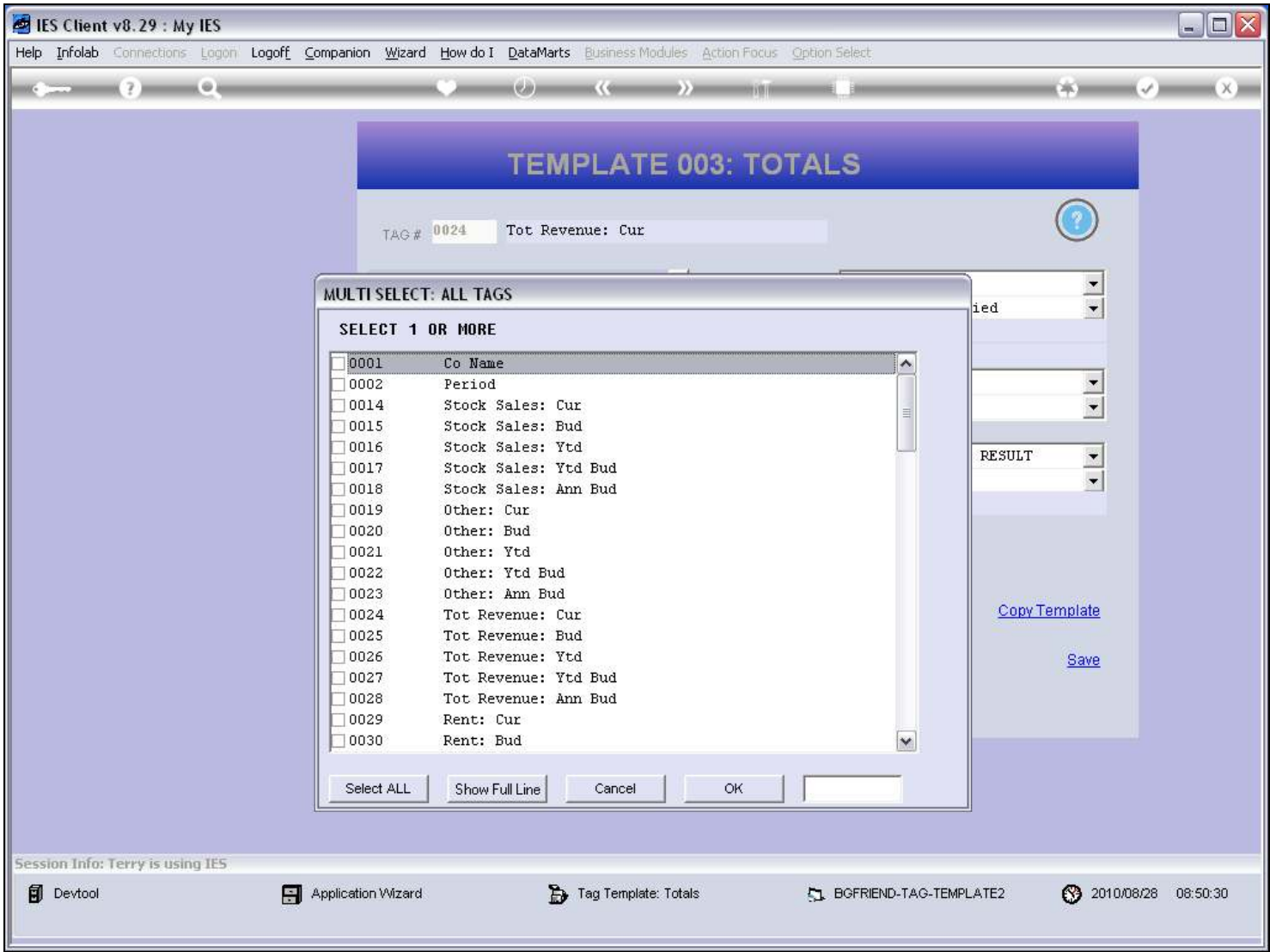
We have a Template specifically for totals from other Tags. Just select the Tags to include in the total, and select any Tags to subtract, if any.

Slide 11 - Slide 11



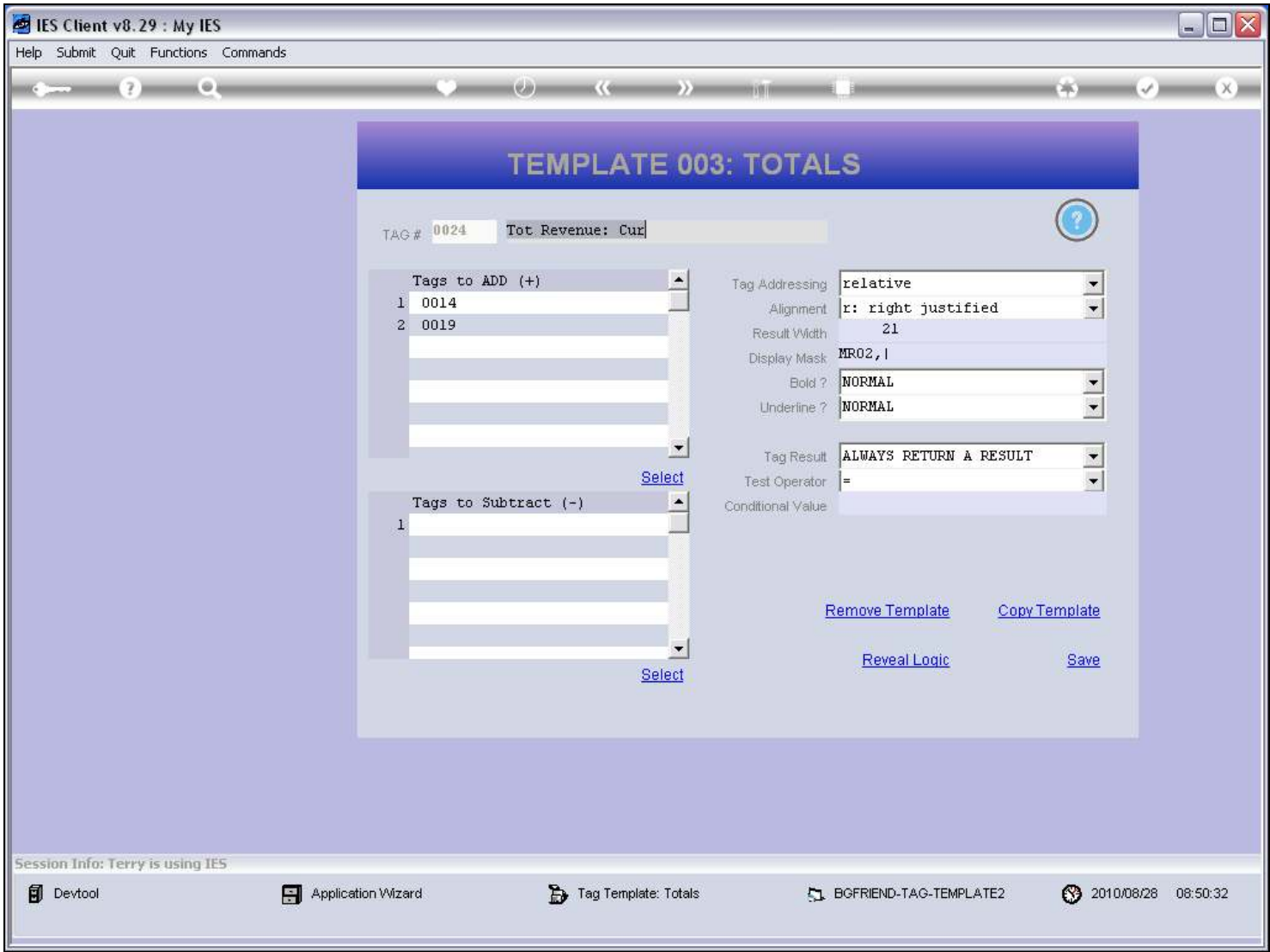
Slide notes

Slide 12 - Slide 12



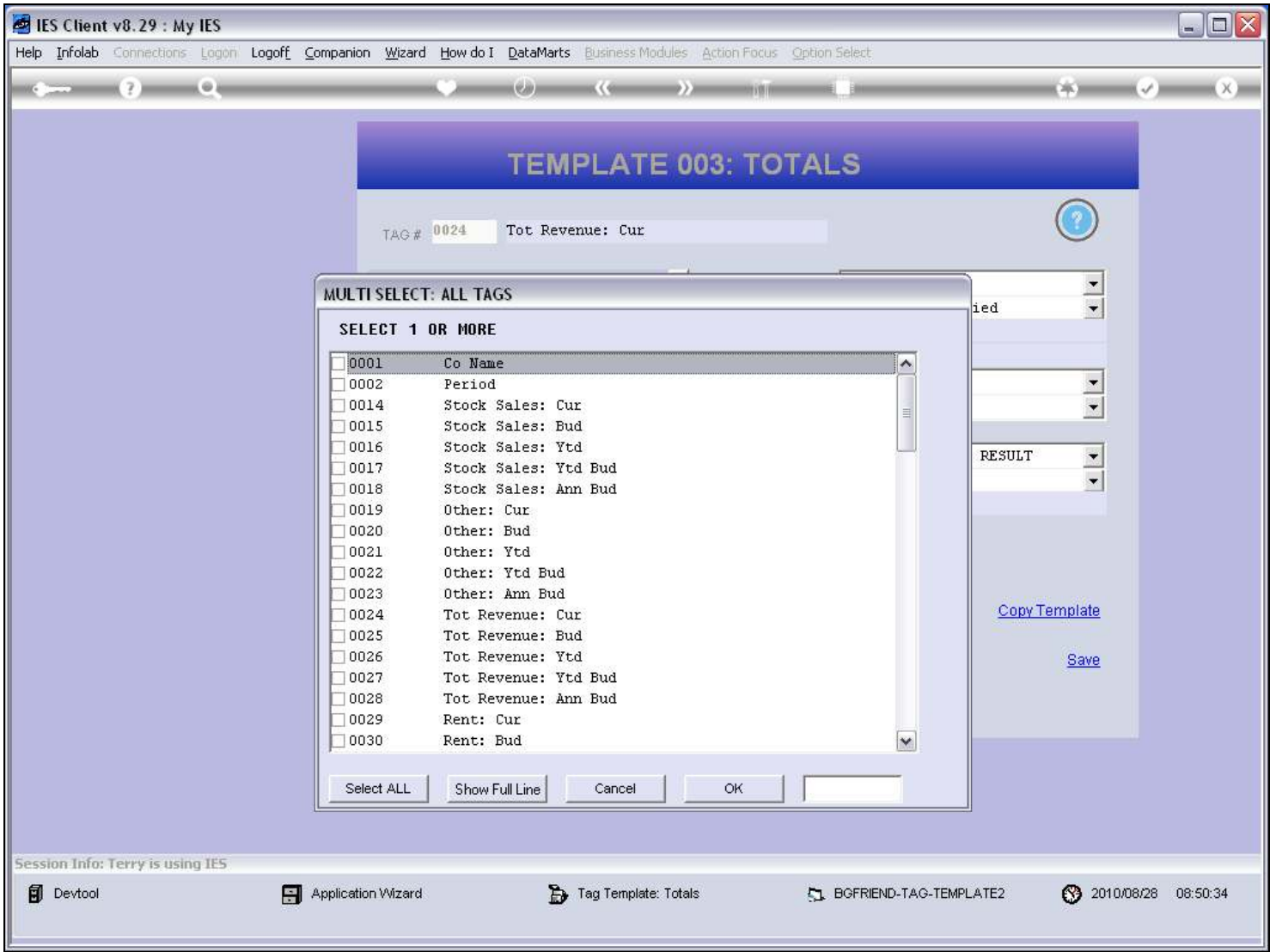
Slide notes

Slide 13 - Slide 13



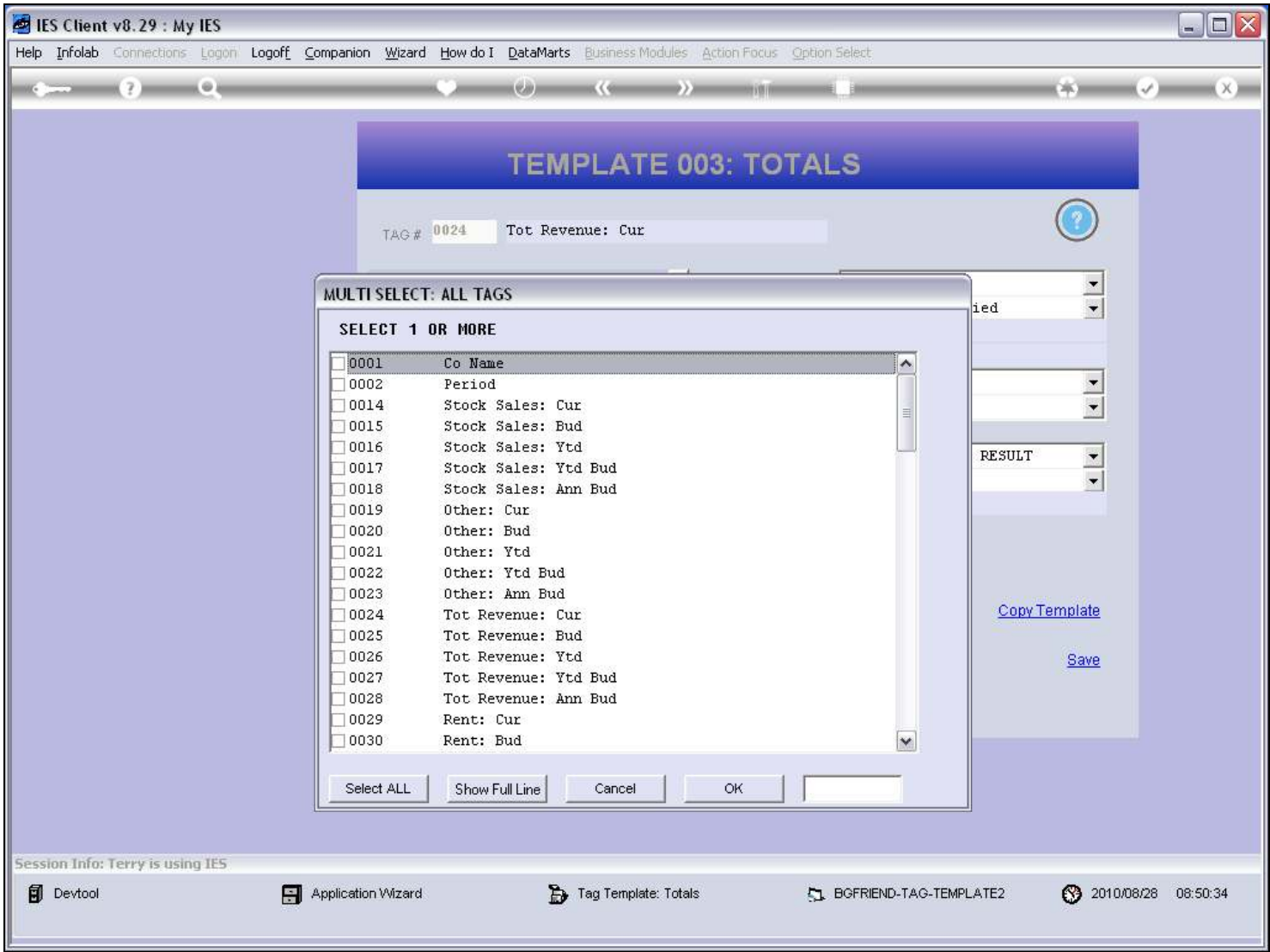
Slide notes

Slide 14 - Slide 14



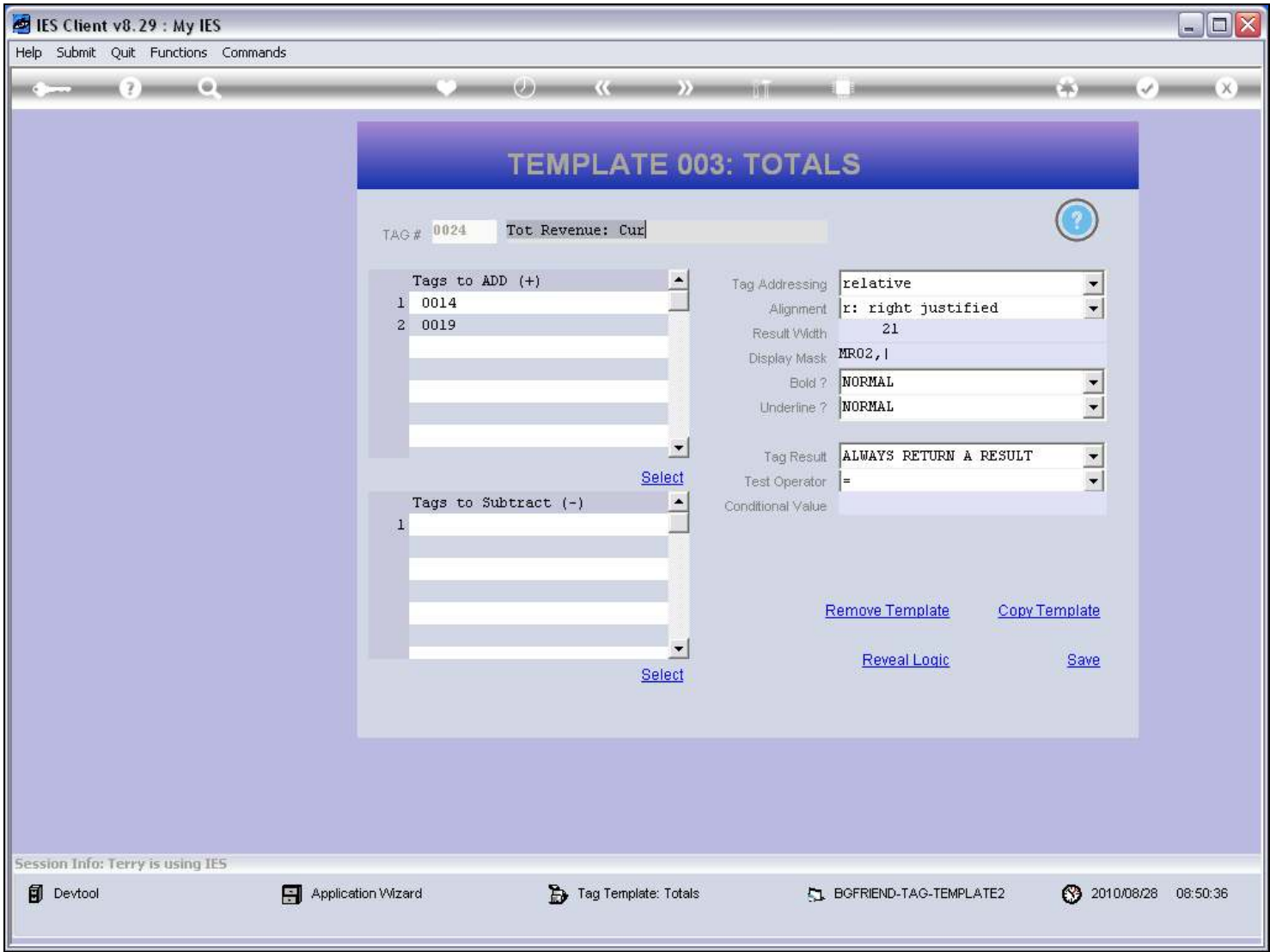
Slide notes

Slide 15 - Slide 15



Slide notes

Slide 16 - Slide 16



Slide notes

Slide 17 - Slide 17

IES Client v8.29 : My IES

Help Submit Quit Functions Commands

1 Console2 Pre Run3 The Tags4 Options

Tag Result Macros: -

	>>> Tags	Value Names	Exec It
1	0001	Co Name	1
2	0002	Period	1
3	0014	Stock Sales: Cur	1
4	0015	Stock Sales: Bud	1
5	0016	Stock Sales: YTD	1
6	0017	Stock Sales: YTD Bud	1
7	0018	Stock Sales: Ann Bud	1
8	0019	Other: Cur	1
9	0020	Other: Bud	1
10	0021	Other: YTD	1
11	0022	Other: YTD Bud	1
12	0023	Other: Ann Bud	1
13	0024	Tot Revenue: Cur	1
14	0025	Tot Revenue: Bud	1
15	0026	Tot Revenue: YTD	1
16	0027	Tot Revenue: YTD Bud	1
17	0028	Tot Revenue: Ann Bud	1
18	0029	Rent: Cur	1
19	0030	Rent: Bud	1
20	0031	Rent: YTD	1
21	0032	Rent: YTD Bud	1
22	0033	Rent: Ann Bud	1
23	0034	Bad Debts: Cur	1
24	0035	Bad Debts: Bud	1
25	0036	Bad Debts: YTD	1

NexPreAddInsEdDel

Where is that tag !

Select from Tag List

Search for Tag Number

Search for Tag Name

Current Tag Focus: -

Row13

Tag #0024

NameTot Revenue: Cur

Open the Tag Macro

Slide notes

Slide 18 - Slide 18

IES Client v8.29 : My IES

Help Submit Quit Functions Commands

1 Console 2 Pre Run 3 The Tags 4 Options

Tag Result Macros: -

	>>> Tags	Value Names	Exec It
1	0001	Co Name	1
2	0002	Period	1
3	0014	Stock Sales: Cur	1
4	0015	Stock Sales: Bud	1
5	0016	Stock Sales: YTD	1
6	0017	Stock Sales: YTD Bud	1
7	0018	Stock Sales: Ann Bud	1
8	0019	Other: Cur	1
9	0020	Other: Bud	1
10	0021	Other: YTD	1
11	0022	Other: YTD Bud	1
12	0023	Other: Ann Bud	1
13	0024	Tot Revenue: Cur	1
14	0025	Tot Revenue: Bud	1
15	0026	Tot Revenue: YTD	1
16	0027	Tot Revenue: YTD Bud	1
17	0028	Tot Revenue: Ann Bud	1
18	0029	Rent: Cur	1
19	0030	Rent: Bud	1
20	0031	Rent: YTD	1
21	0032	Rent: YTD Bud	1
22	0033	Rent: Ann Bud	1
23	0034	Bad Debts: Cur	1
24	0035	Bad Debts: Bud	1
25	0036	Bad Debts: YTD	1

Where is that tag !

[Select from Tag List](#)

[Search for Tag Number](#)

[Search for Tag Name](#)

Current Tag Focus: -

Row	13
Tag #	0024
Name	Tot Revenue: Cur

[Open the Tag Macro](#)

Nex Pre Add Ins Ed Del

Slide notes