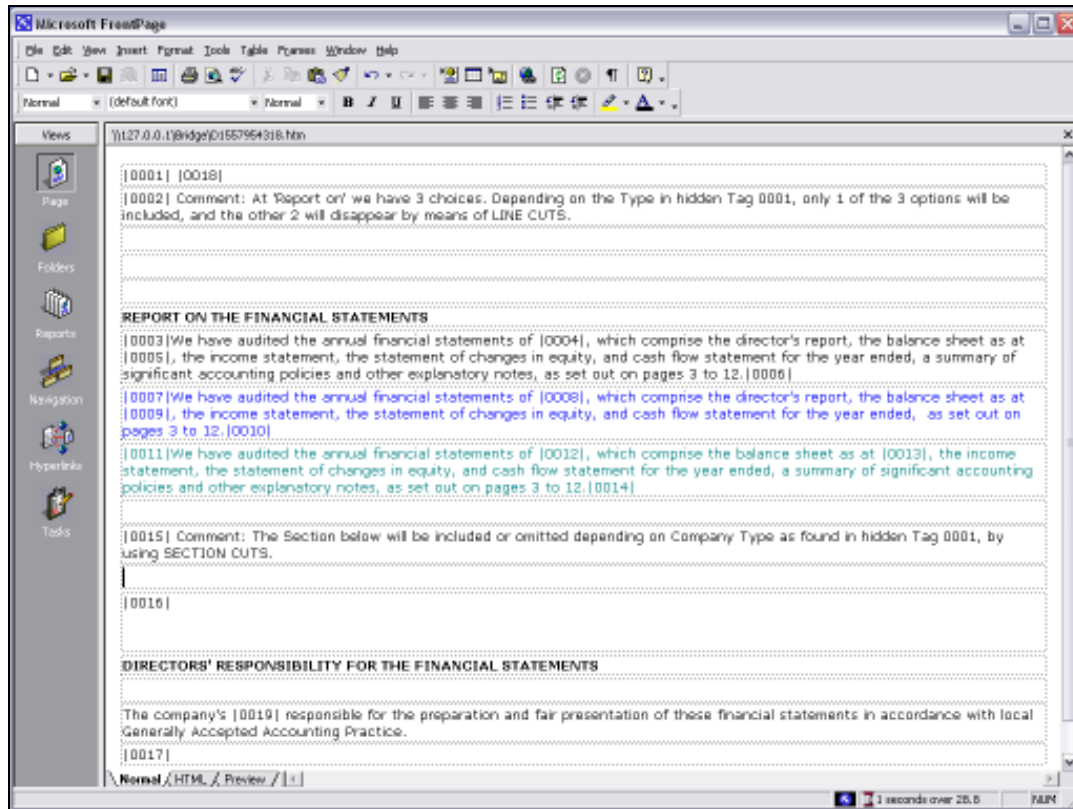


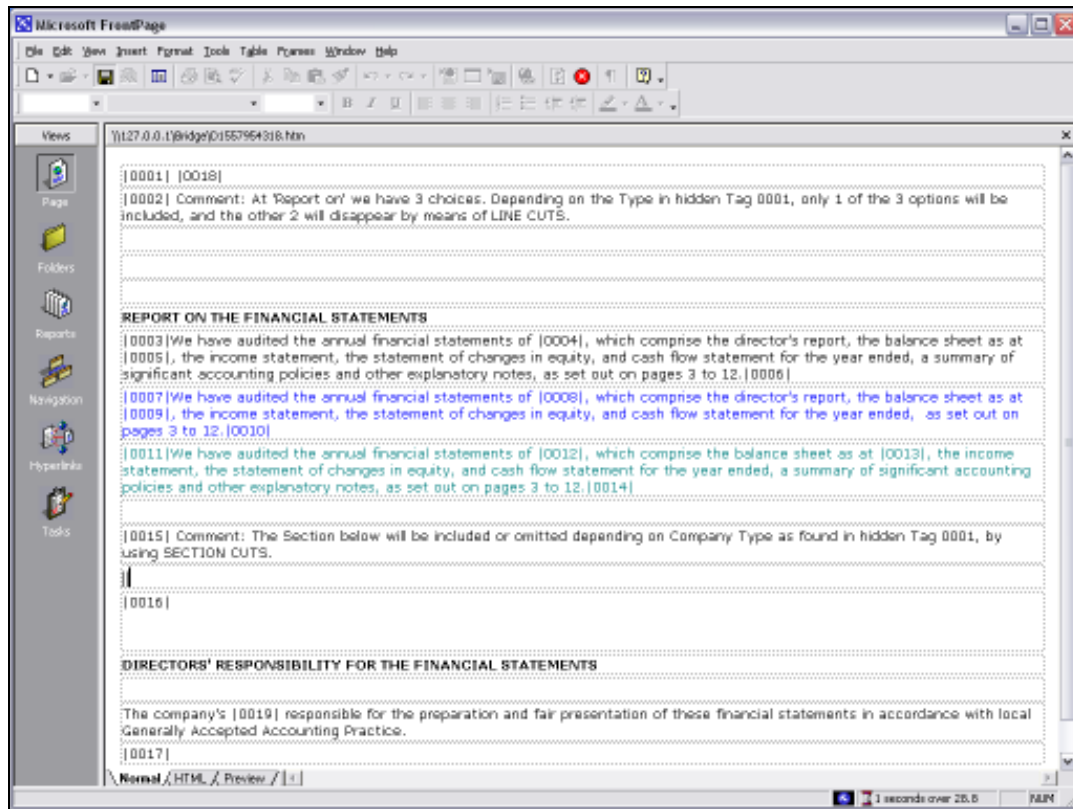
Slide 1

Slide notes: We are now going to look at the Template that inserts a drawn line, and we suggest that we would like a line between these 2 sections in the layout. Therefore, we just put a new Tag where we want to have the line.



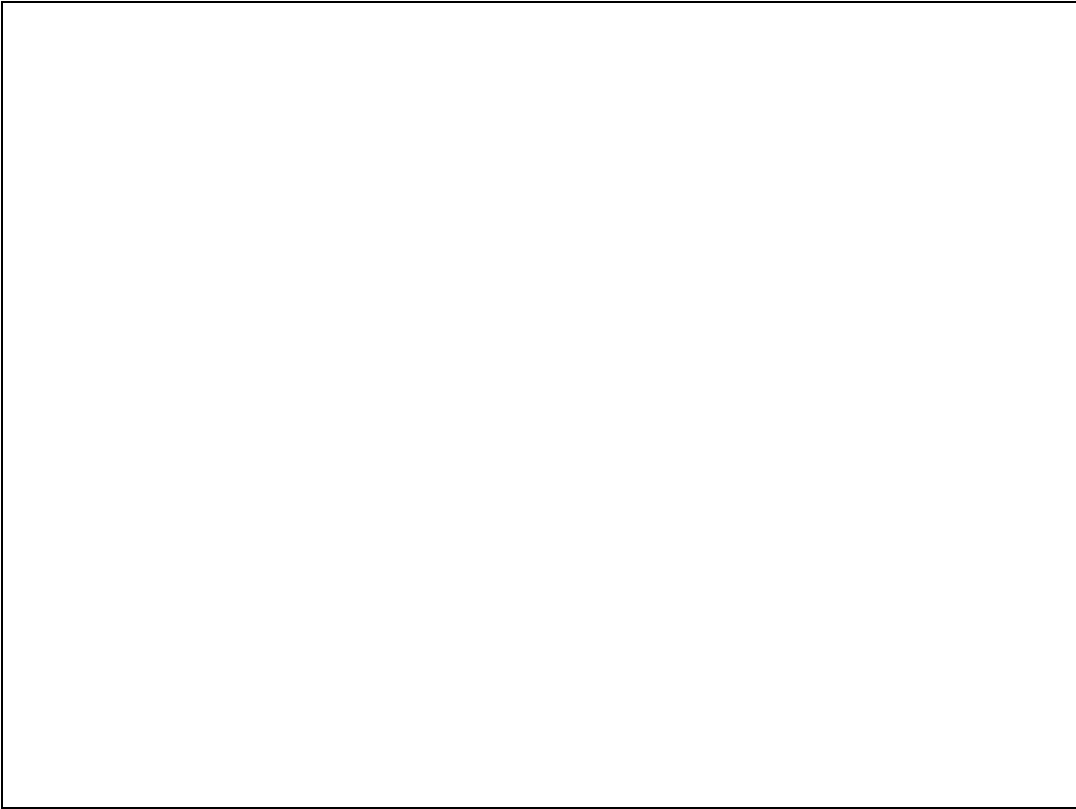
Slide 2

Slide notes:



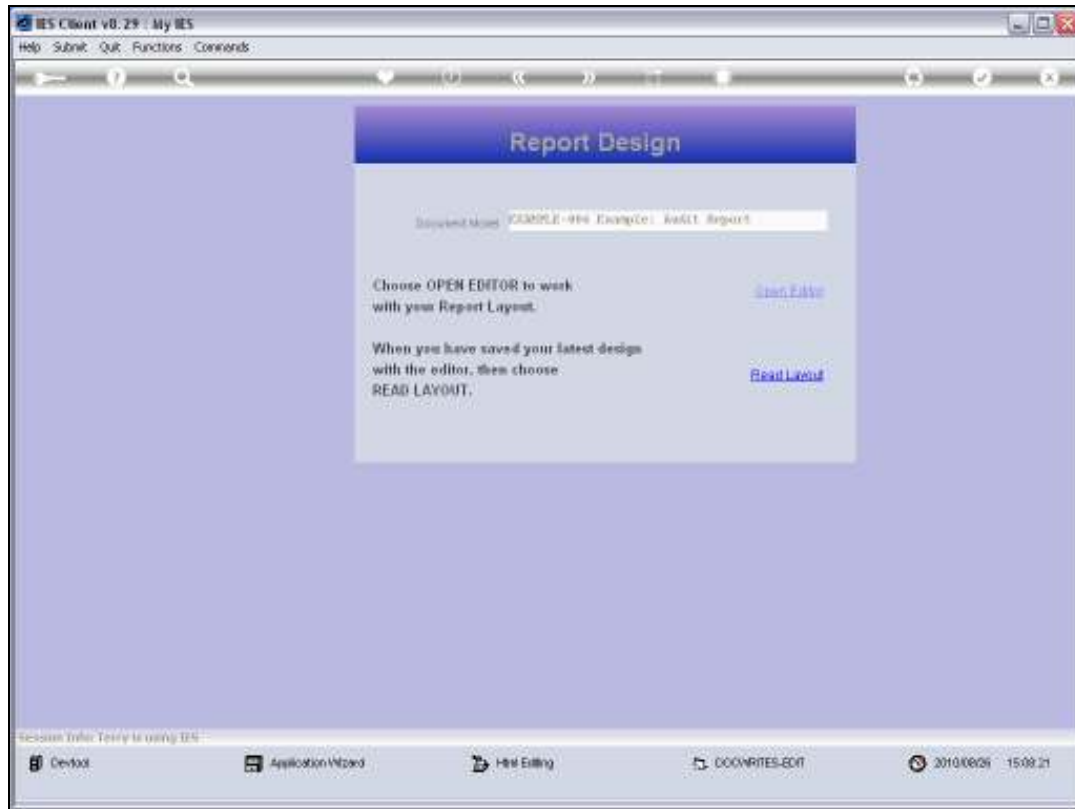
Slide 3

Slide notes:



Slide 4

Slide notes:



Slide 5

Slide notes:



Slide 6

Slide notes:



Slide 7

Slide notes:



Slide 8

Slide notes:



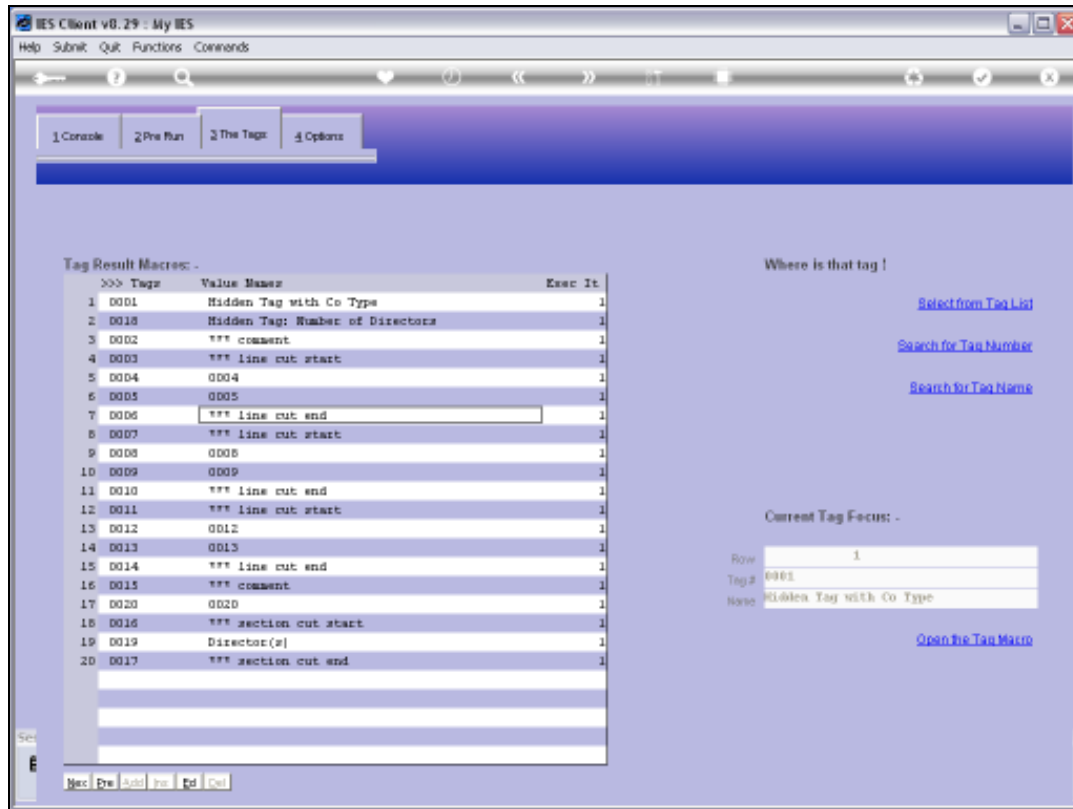
Slide 9

Slide notes:



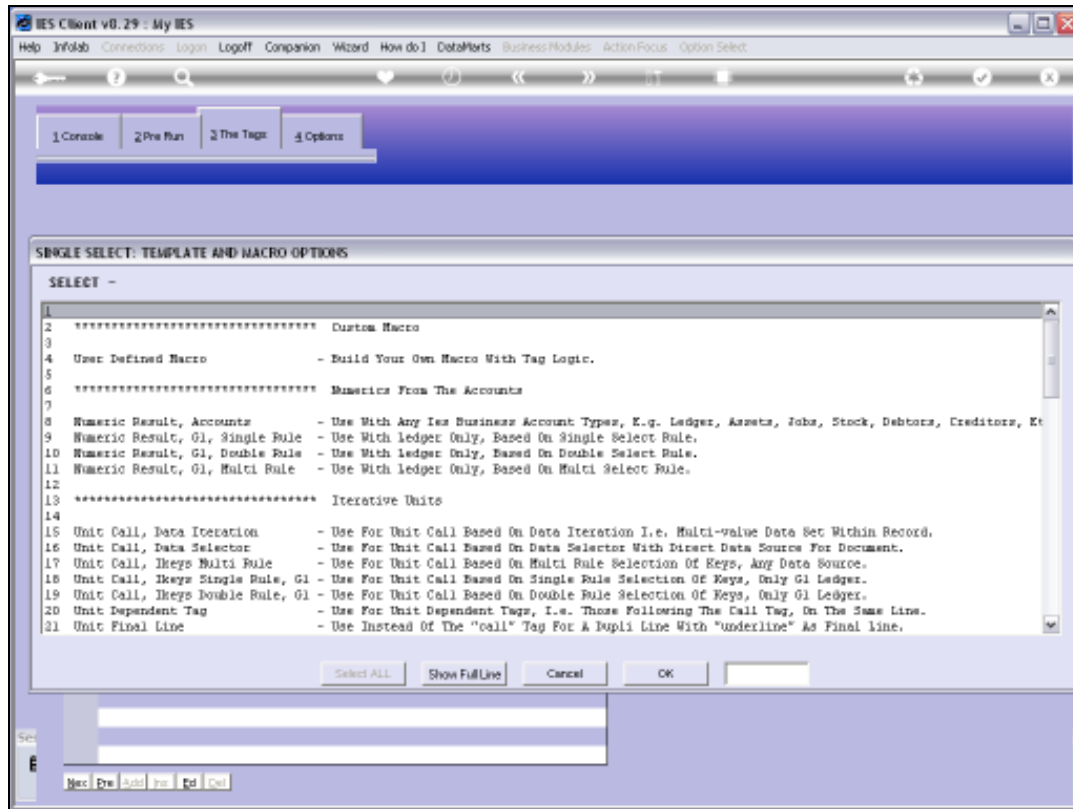
Slide 10

Slide notes:



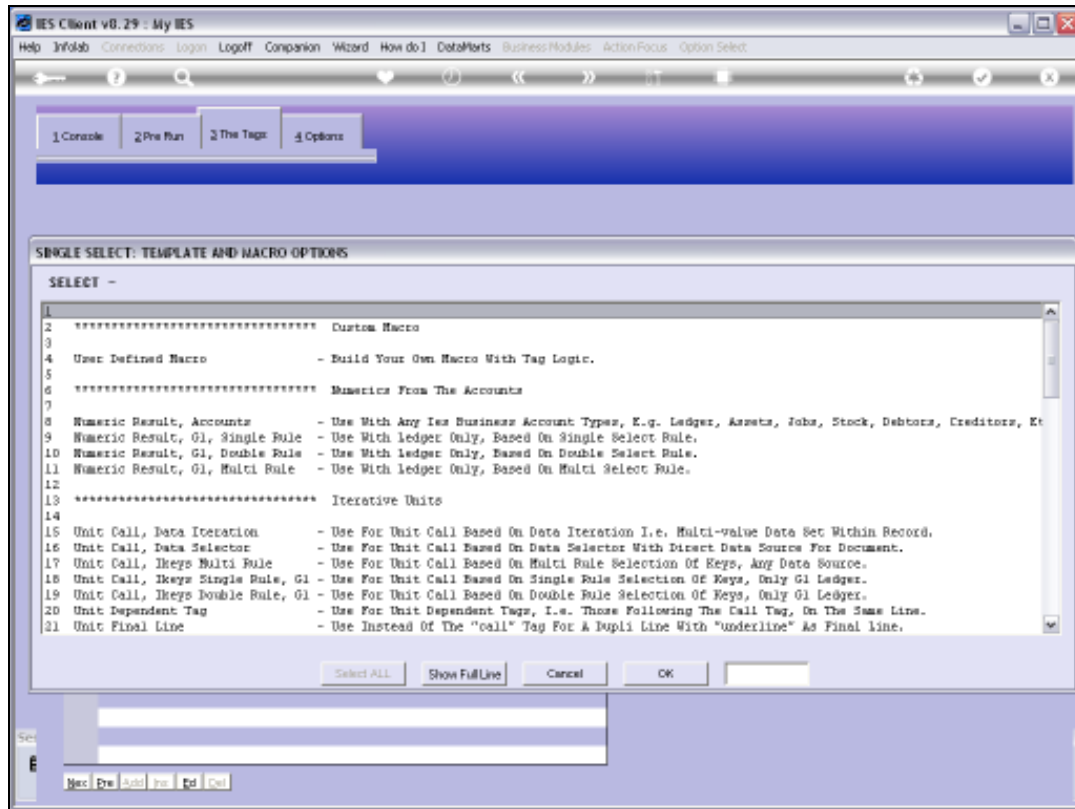
Slide 11

Slide notes:



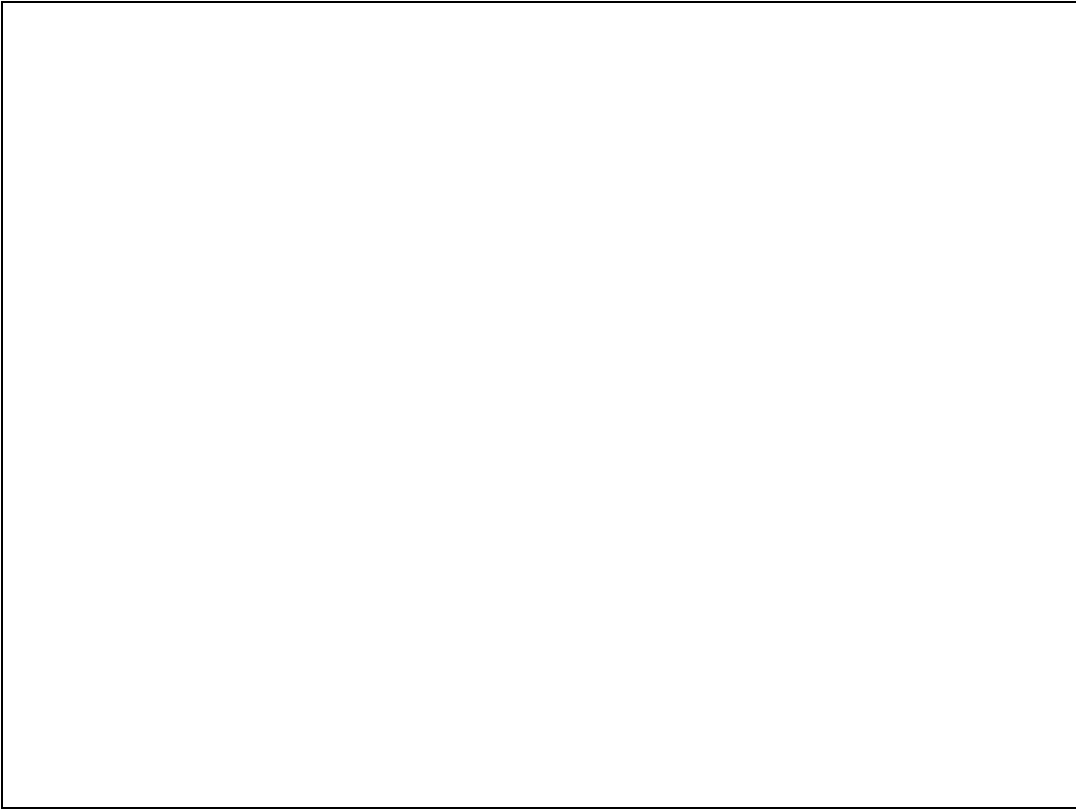
Slide 12

Slide notes:



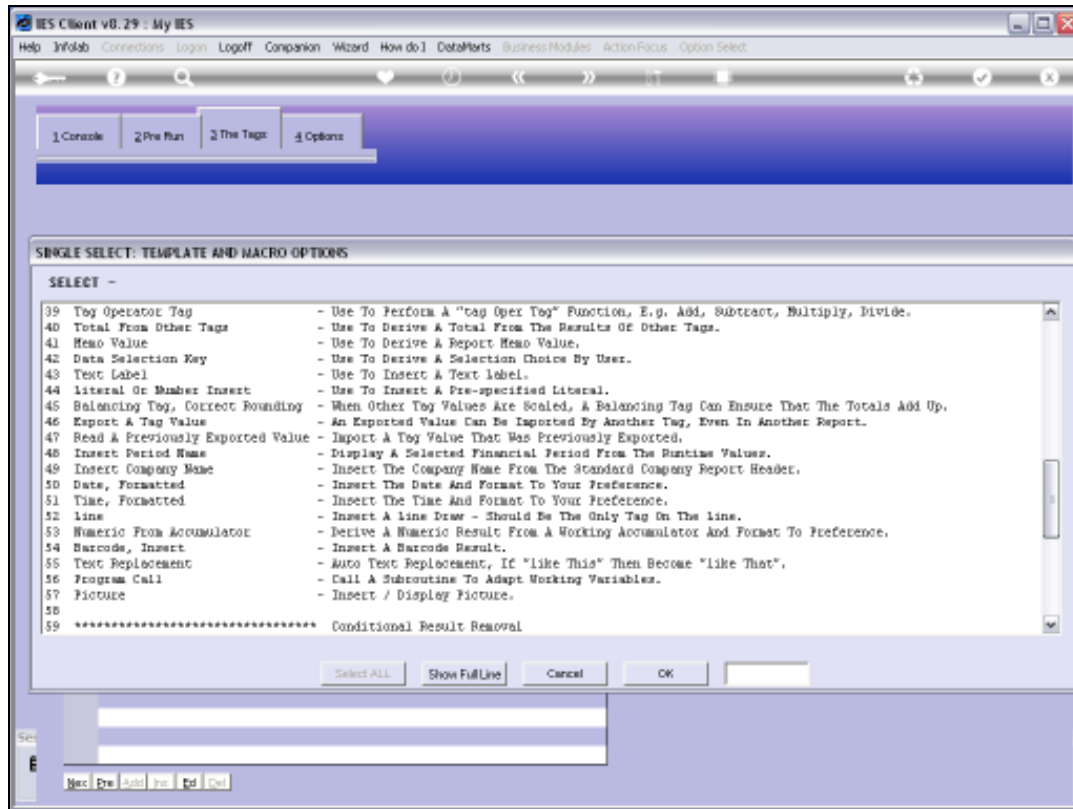
Slide 13

Slide notes:



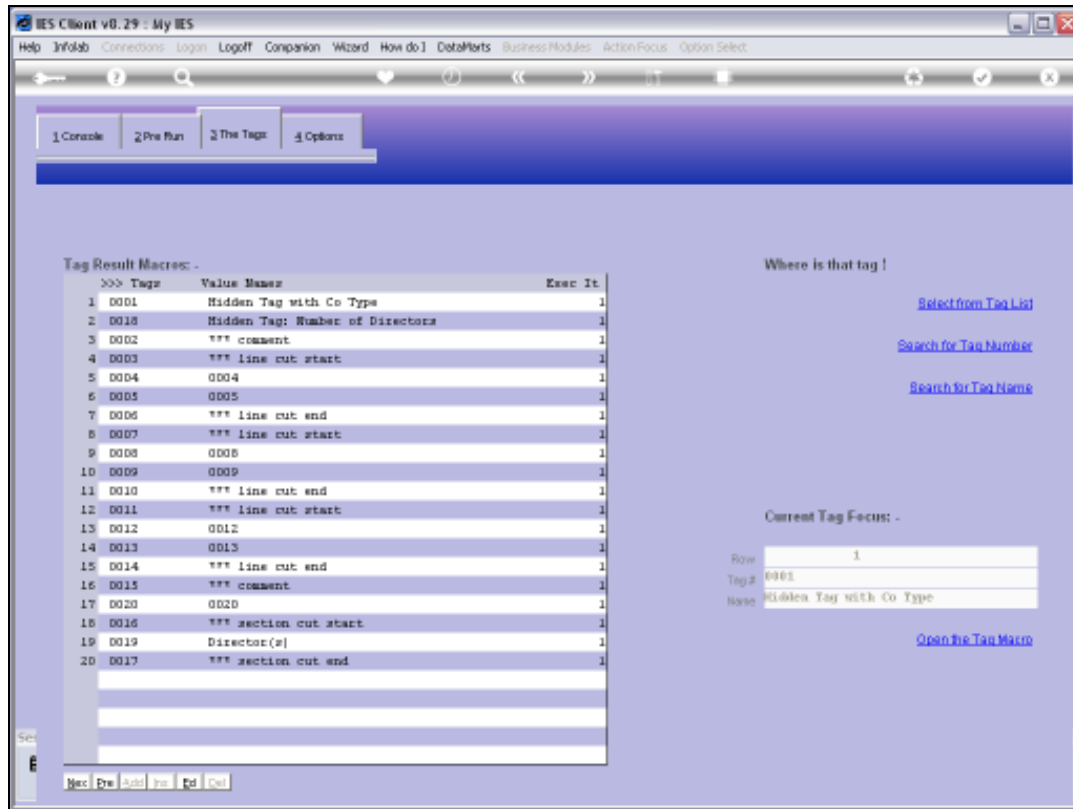
Slide 14

Slide notes:



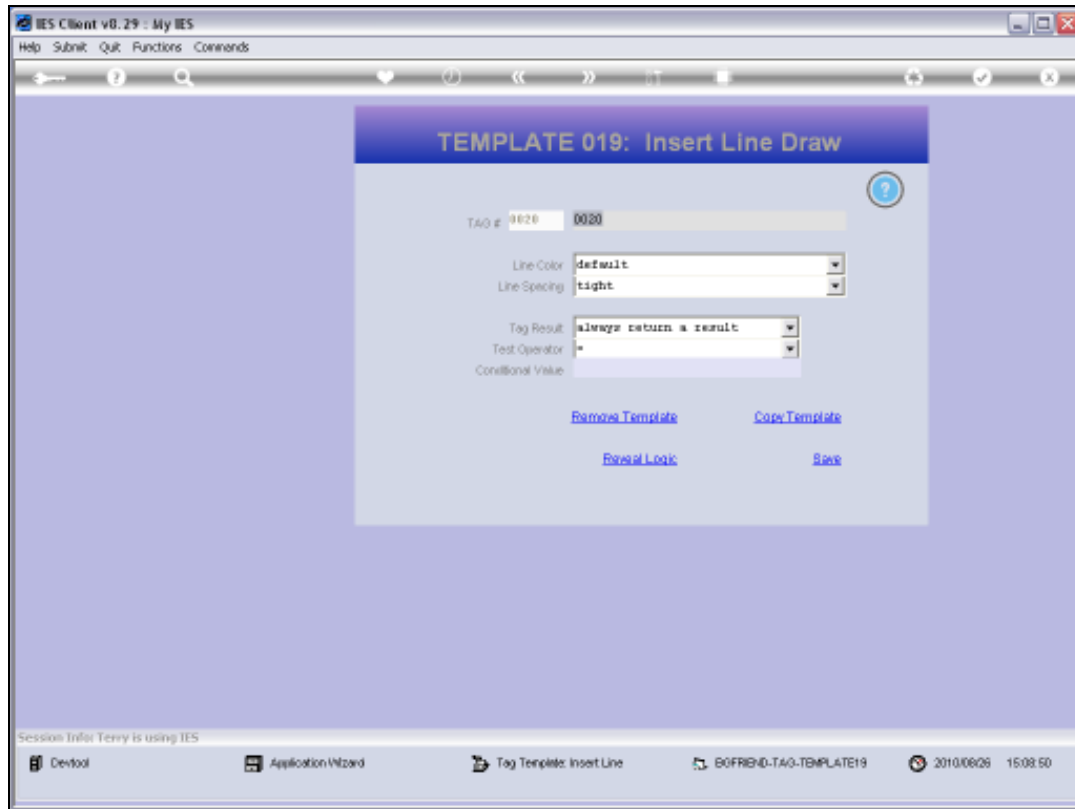
Slide 15

Slide notes:



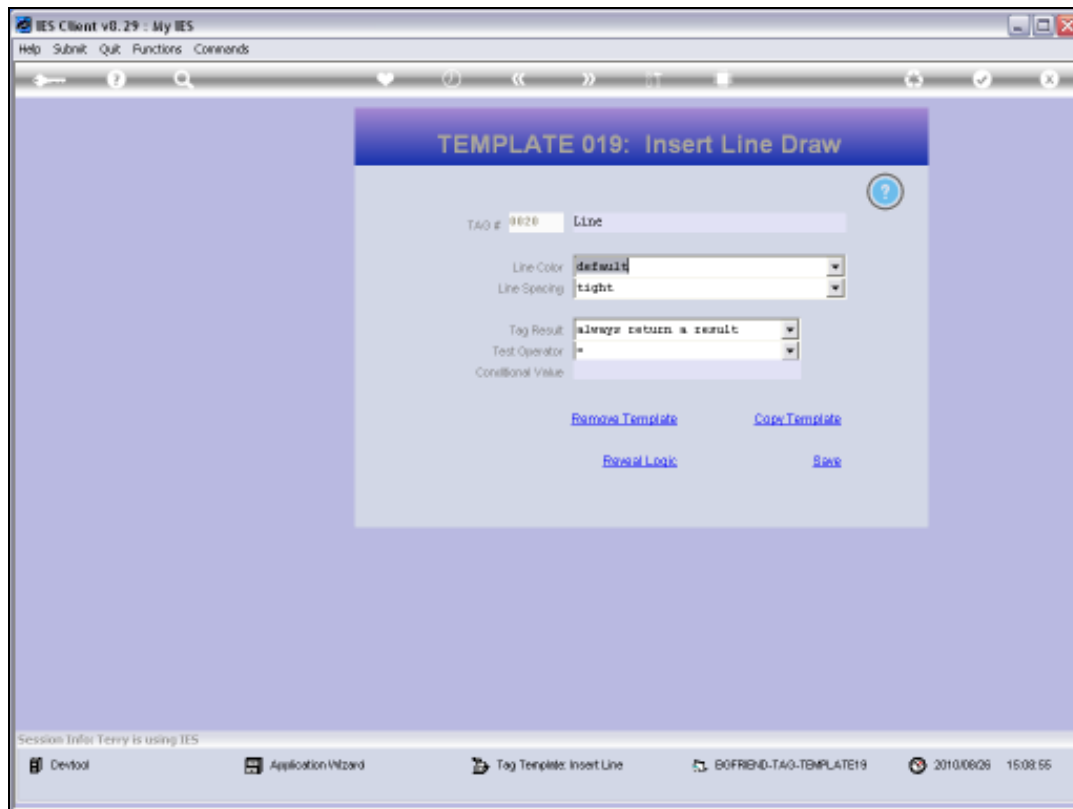
Slide 16

Slide notes:



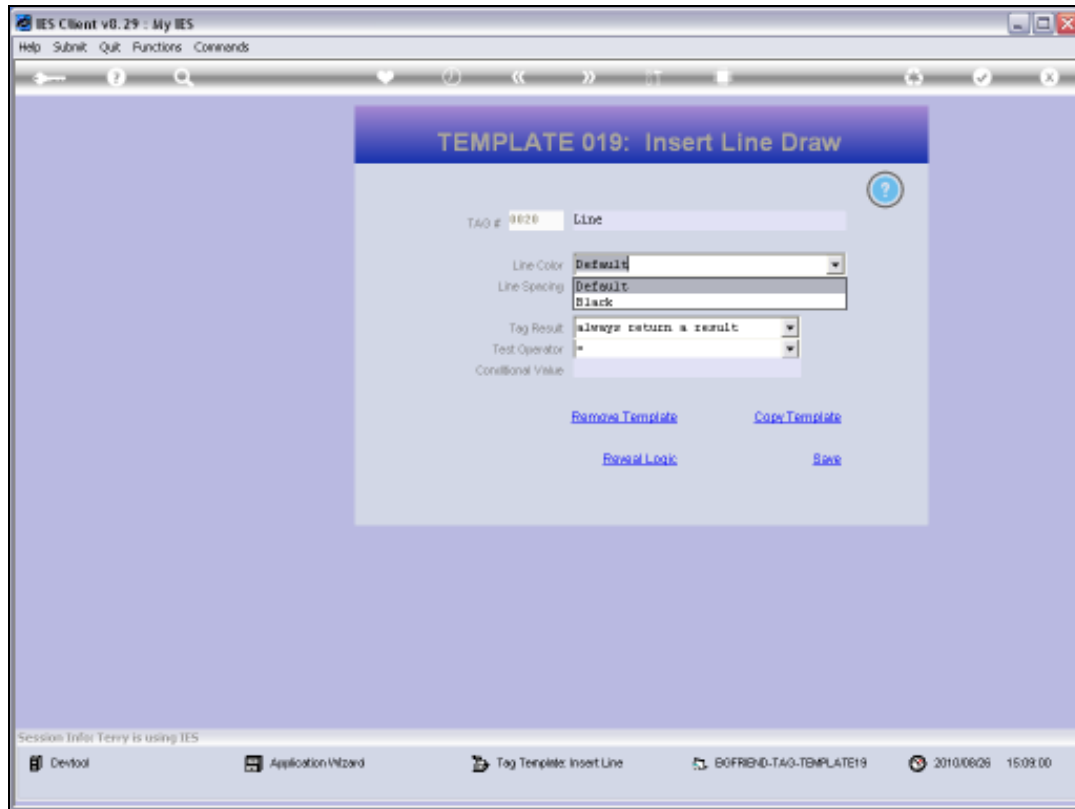
Slide 17

Slide notes:



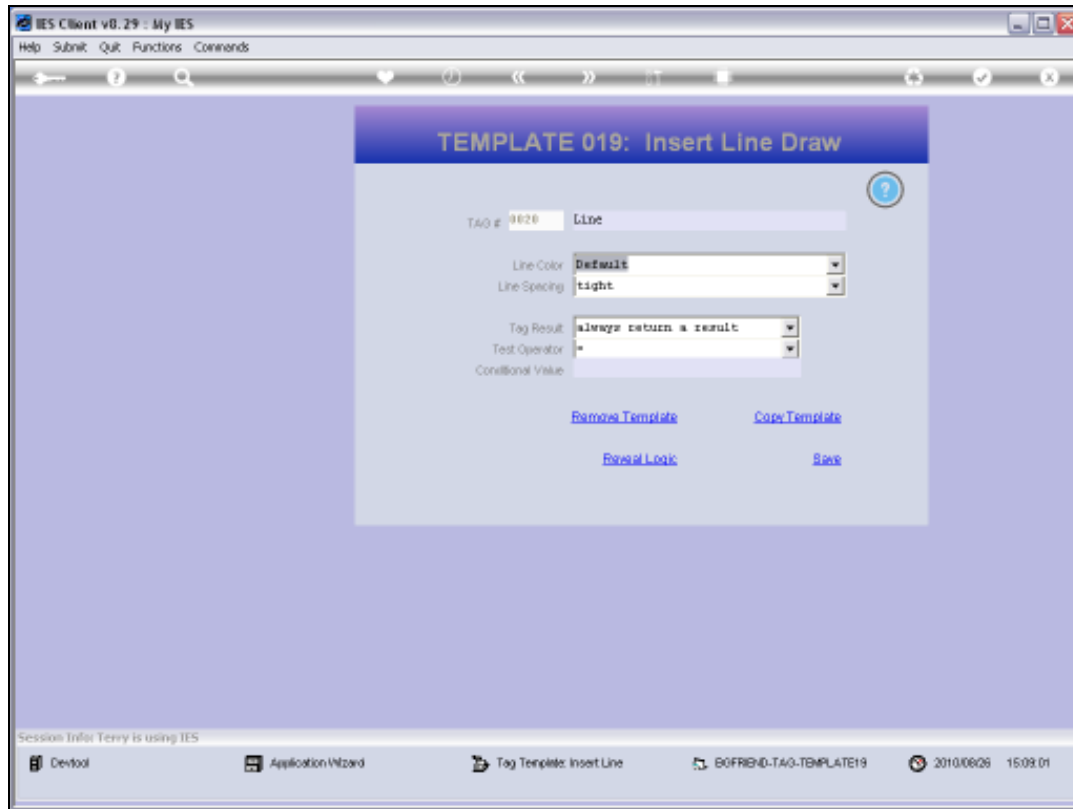
Slide 18

Slide notes:



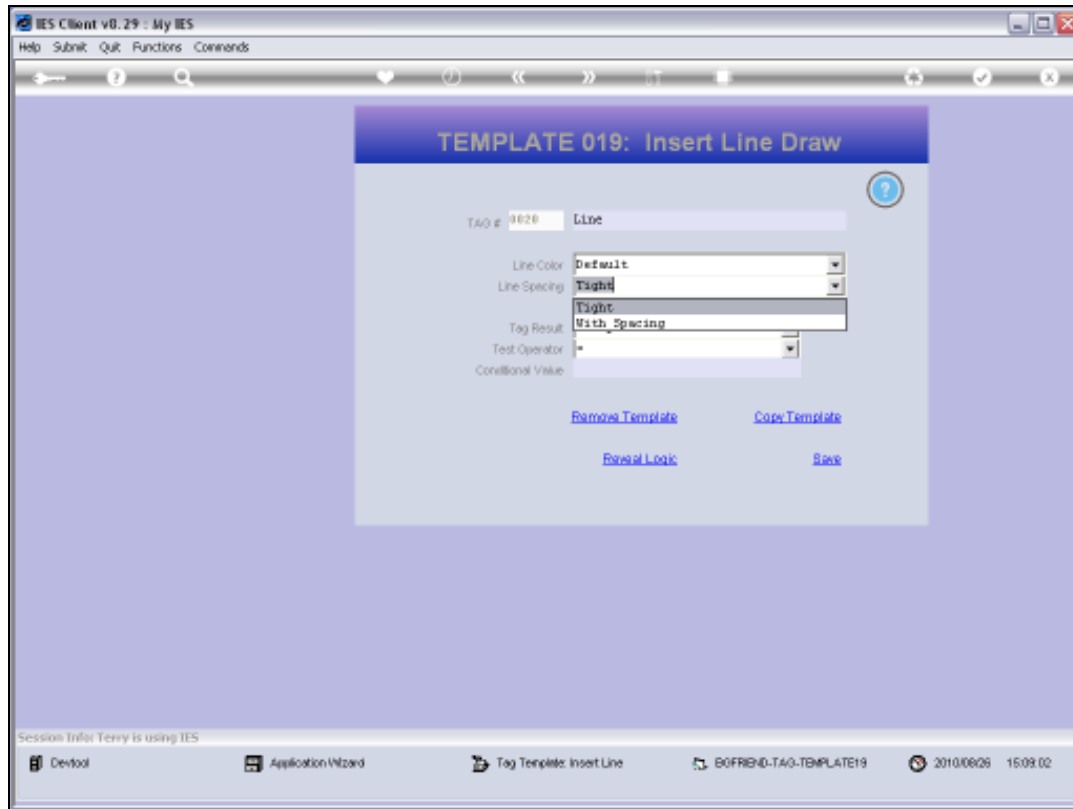
Slide 19

Slide notes:



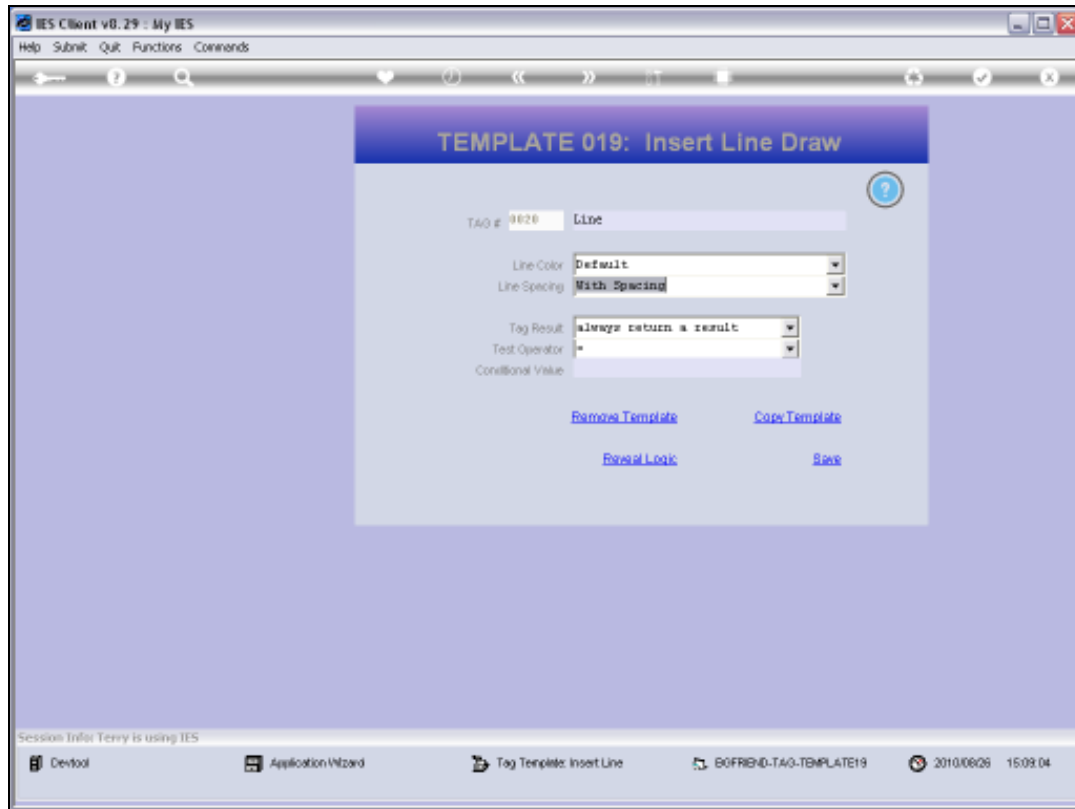
Slide 20

Slide notes:



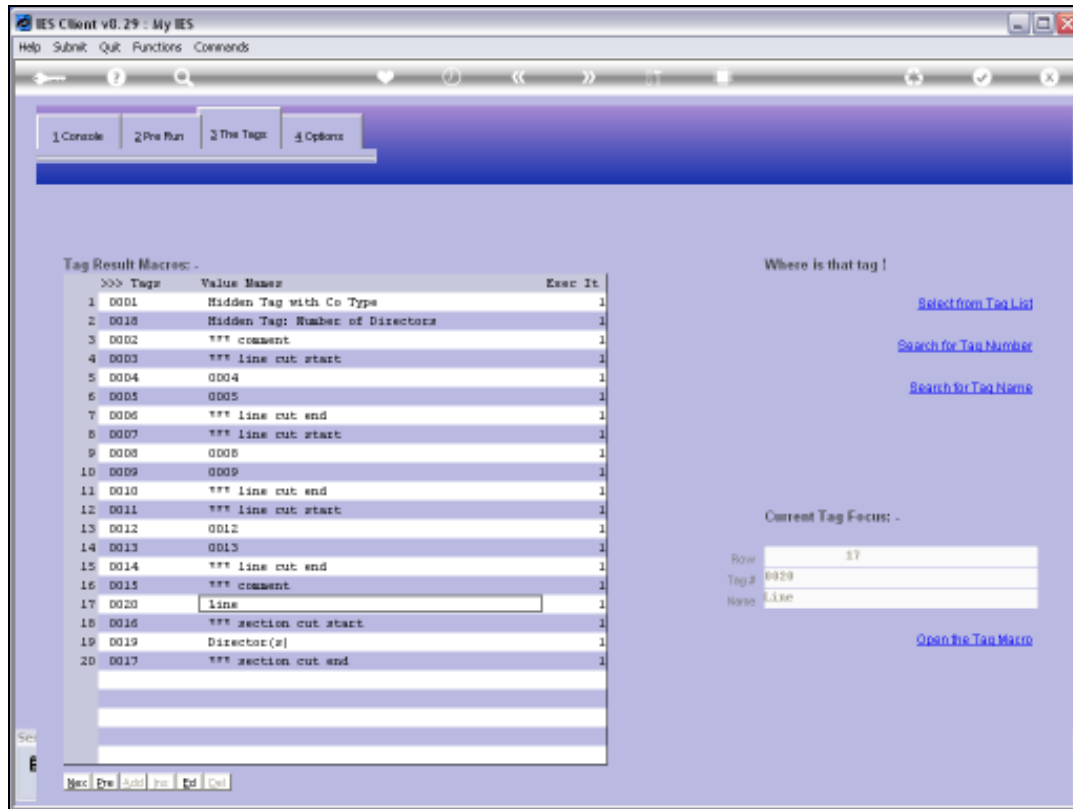
Slide 21

Slide notes:



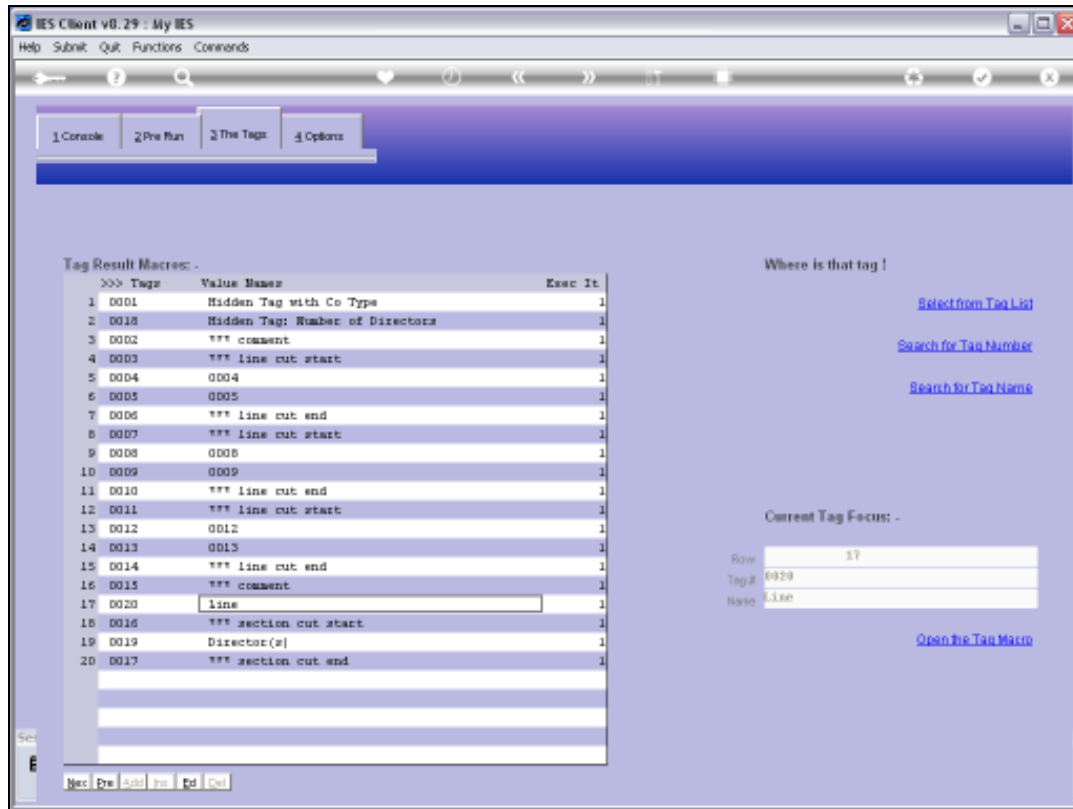
Slide 22

Slide notes:



Slide 23

Slide notes:



Slide 24

Slide notes:



Slide 25

Slide notes:



Slide 26

Slide notes:



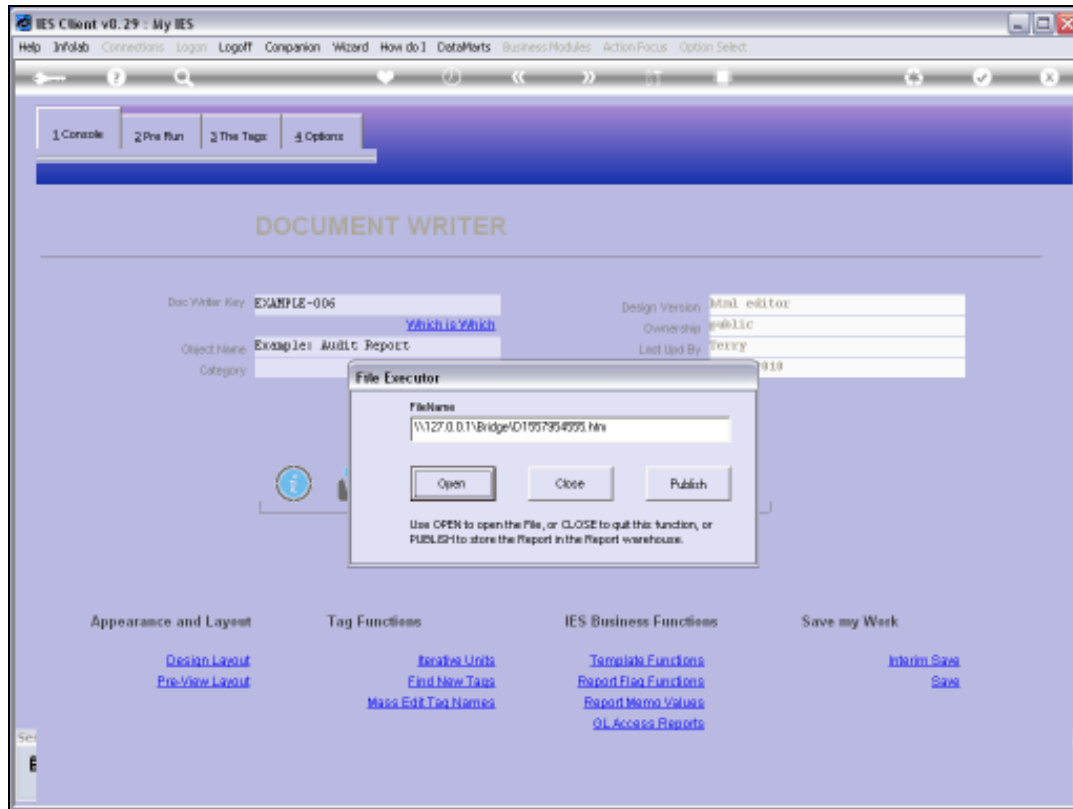
Slide 27

Slide notes:



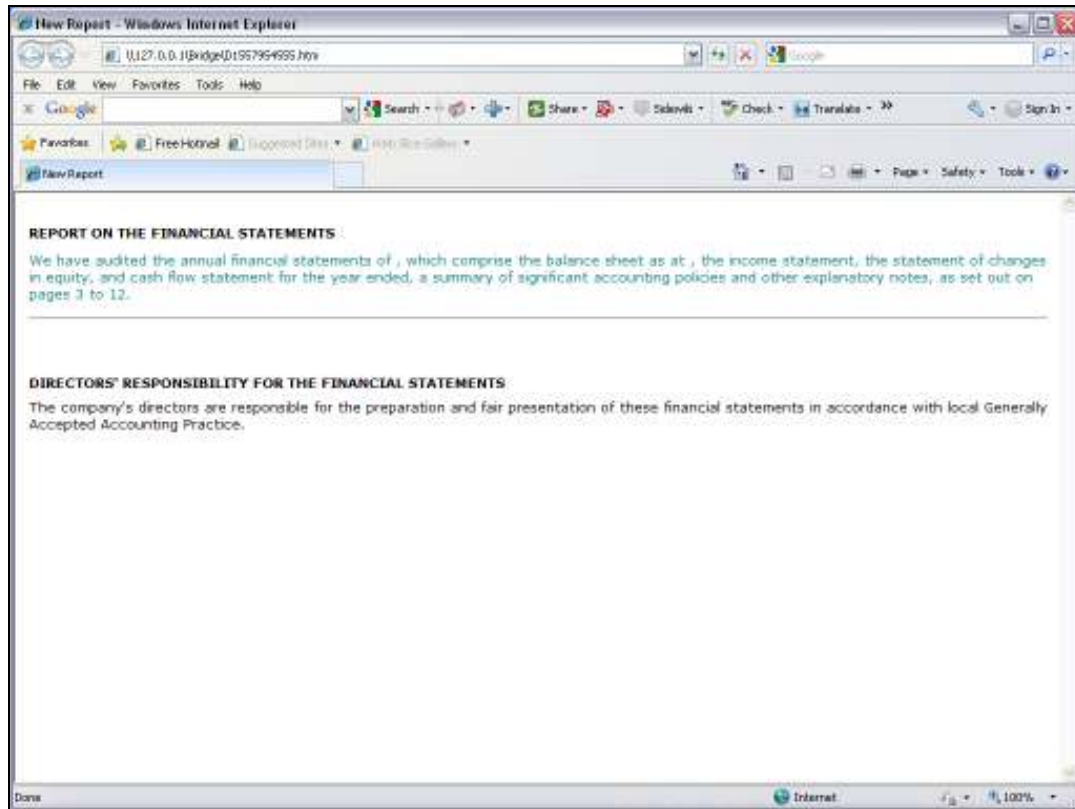
Slide 28

Slide notes:



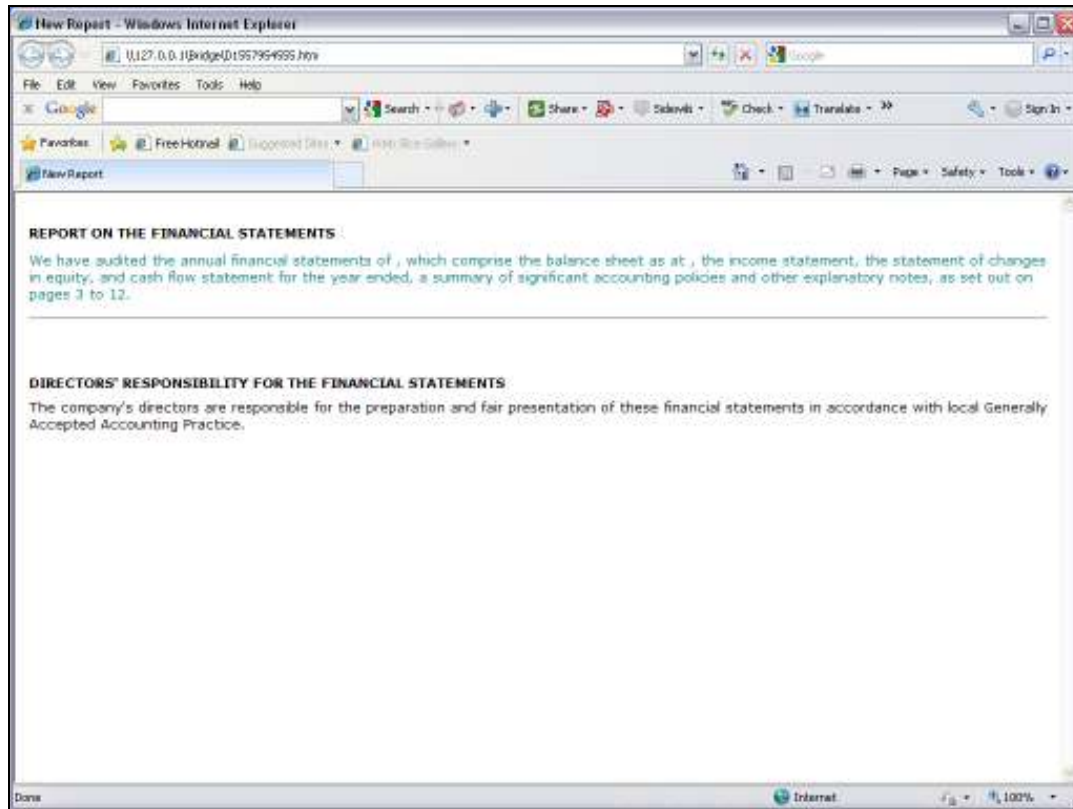
Slide 29

Slide notes:



Slide 30

Slide notes: So here is the line. This is not the only way to get a line in the Report, but it is the way to use a Tag Template to do it.



Slide 31

Slide notes: