

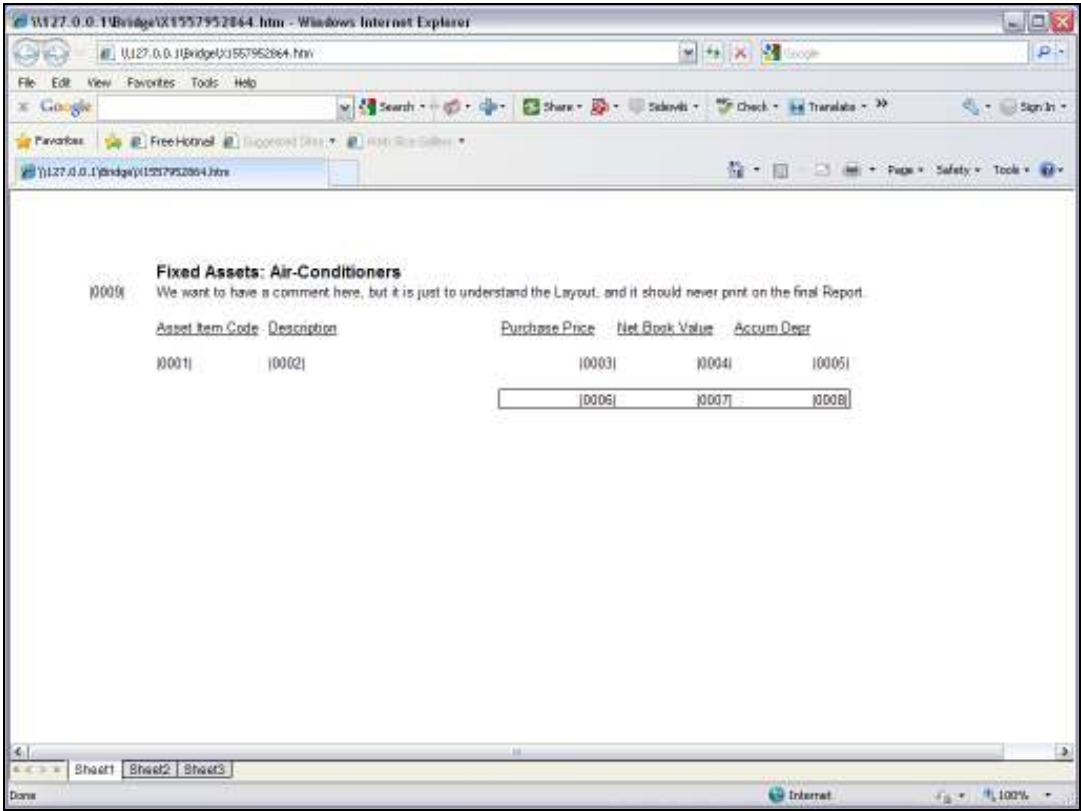
Fixed Assets: Air-Conditioners

(0009) We want to have a comment here, but it is just to understand the Layout, and it should never print on the final Report.

Asset Item Code	Description	Purchase Price	Net Book Value	Accum Depn
(0001)	(0002)	(0003)	(0004)	(0005)
		(0006)	(0007)	(0008)

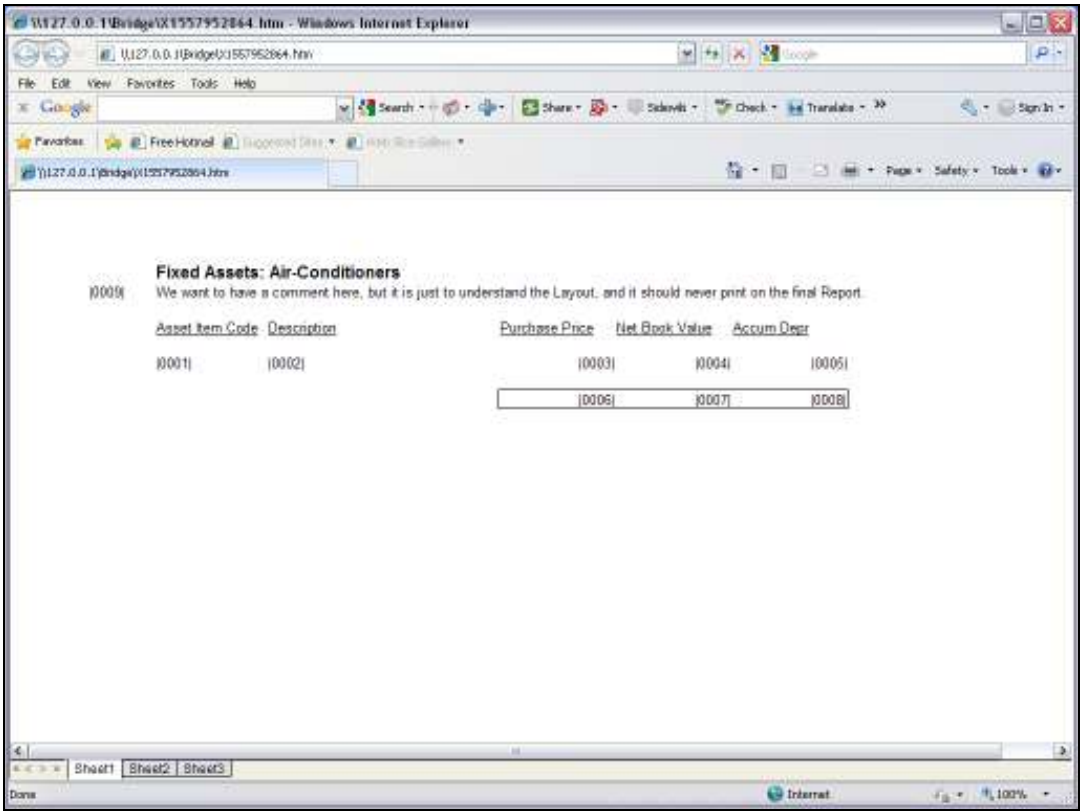
Slide 1

Slide notes: We will be looking at the Template to get a Numeric from an Accumulator. First we start with an example. In this layout, we see a Unit. For example, at Tag 3, there may be multiple lines with a Purchase Price each, and while the Unit is processing these lines, each Purchase Price is passed to an Accumulator. At the end, the total for the Purchase Price column is available in that Accumulator. Then, in the main Document, when we want this Total at Tag 6, then we just get it from the Accumulator.



Slide 2

Slide notes:



Slide 3

Slide notes:

Fixed Assets: Air-Conditioners

(0000) We want to have a comment here, but it is just to understand the Layout, and it should never print on the final Report.

Asset Item Code	Description	Purchase Price	Net Book Value	Accum Depr
(0001)	(0002)	(0003)	(0004)	(0005)
		(0006)	(0007)	(0008)

Slide 4

Slide notes:

Fixed Assets: Air-Conditioners

Asset Item Code	Description	Purchase Price	Net Book Value	Accum Depr
200-10-01	AC SPLIT PANASONIC CS 12DKH	2,500	1,945	555
200-10-02	AC SPLIT PANASONIC CS 12DKH	1,500	1,500	0
200-11-01	AC SPLIT PANASONIC CS 12DKH	2,500	1,945	555
200-12-01	AC SPLIT PANASONIC CS 12DKH	2,600	2,023	577
200-13-01	AC SPLIT DAIKIN 1.5PK INVERTER	2,600	2,023	577
200-14-01	AC SPLIT DAIKIN 1.5PK INVERTER	2,400	1,867	533
200-15-01	AC SPLIT DAIKIN 1.5PK INVERTER	2,400	1,867	533
200-17-01	AIR CONDITIONER, LG	2,400	1,877	523
200-18-01	AIR CONDITIONER, LG	2,400	1,867	533
		21,300	16,914	4,386

Slide 5

Slide notes: This is an example of the Report when it is performed. So all the Purchase Price Values are summed into the Accumulator, which provides the Total below the column.

Fixed Assets: Air-Conditioners

Asset Item Code	Description	Purchase Price	Net Book Value	Accum Depr
200-10-01	AC SPLIT PANASONIC CS 12DKH	2,500	1,945	555
200-10-02	AC SPLIT PANASONIC CS 12DKH	1,500	1,500	0
200-11-01	AC SPLIT PANASONIC CS 12DKH	2,500	1,945	555
200-12-01	AC SPLIT PANASONIC CS 12DKH	2,600	2,023	577
200-13-01	AC SPLIT DAIKIN 1.5PK INVERTER	2,600	2,023	577
200-14-01	AC SPLIT DAIKIN 1.5PK INVERTER	2,400	1,867	533
200-15-01	AC SPLIT DAIKIN 1.5PK INVERTER	2,400	1,867	533
200-17-01	AIR CONDITIONER, LG	2,400	1,877	523
200-18-01	AIR CONDITIONER, LG	2,400	1,867	533
		21,300	16,914	4,386

Slide 6

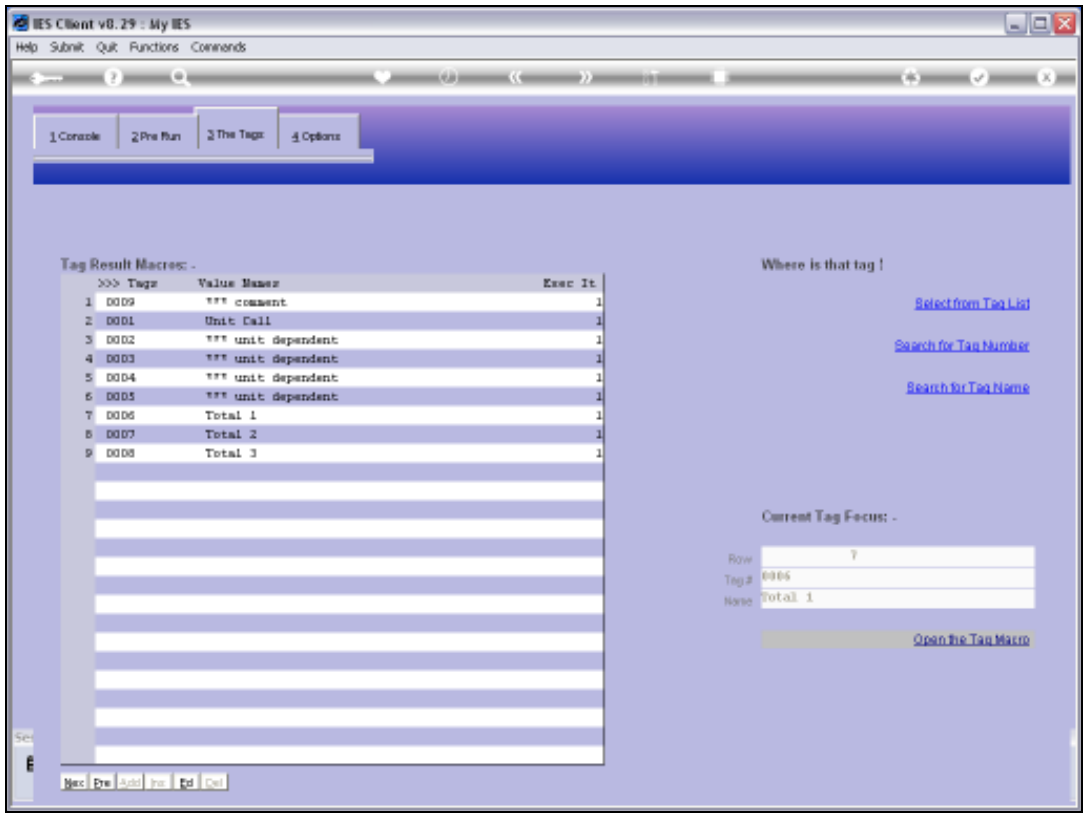
Slide notes:

Fixed Assets: Air-Conditioners

Asset Item Code	Description	Purchase Price	Net Book Value	Accum Depr
200-10-01	AC SPLIT PANASONIC CS 12DKH	2,500	1,945	555
200-10-02	AC SPLIT PANASONIC CS 12DKH	1,500	1,500	0
200-11-01	AC SPLIT PANASONIC CS 12DKH	2,500	1,945	555
200-12-01	AC SPLIT PANASONIC CS 12DKH	2,600	2,023	577
200-13-01	AC SPLIT DAIKIN 1.5PK INVERTER	2,600	2,023	577
200-14-01	AC SPLIT DAIKIN 1.5PK INVERTER	2,400	1,867	533
200-15-01	AC SPLIT DAIKIN 1.5PK INVERTER	2,400	1,867	533
200-17-01	AIR CONDITIONER, LG	2,400	1,877	523
200-18-01	AIR CONDITIONER, LG	2,400	1,867	533
		21,300	16,914	4,386

Slide 7

Slide notes:



Slide 8
Slide notes:

IES Client v8.29 : My IES

Help Submit Quit Functions Commands

TEMPLATE 059: Unit Execute - Multi-Rule IKEYS

TAO #
None

Unit to Call
Data Source Name

[Remove Template](#)
[Copy Template](#)
[Reveal Logic](#)
[Save](#)

Data Selections:

And / Or	DataName	Value	Value
1			
2			
3			
4			
5			
6			
7			
8			

Sort By: -

Sort By
1
2
3
4
5
6

Slide 9

Slide notes:

IES Client v8.29 : My IES

Help Submit Quit Functions Commands

TEMPLATE 059: Unit Execute - Multi-Rule IKEYS

TAG # 0001
Name Unit Cell

Unit to Call example-005
Data Source Name ATPARAMS ATPARAMS

[Remove Template](#)
[Copy Template](#)
[Reveal Logic](#)
[Save](#)

Data Selections:

And / Or	FieldName	Value	Value
1 *	group Group	>= 22	<= 22

Sort By: -

Sort By: 1

Slide 10

Slide notes: The Unit being used here is 'example-005'.

IES Client v0.29 : My IES

Help Submit Quit Functions Commands

TEMPLATE 059: Unit Execute - Multi-Rule IKEYS

TAQ # 0001
Name Unit Cell

Unit to Call example-005
Data Source Name ATPARAMS ATPARAMS

[Remove Template](#)
[Copy Template](#)
[Reveal Logic](#)
[Save](#)

Data Selections:

And / Or	DataName	Value	Value
1 *	group Group	>= 22	<= 22

Sort By: -

Sort By 1

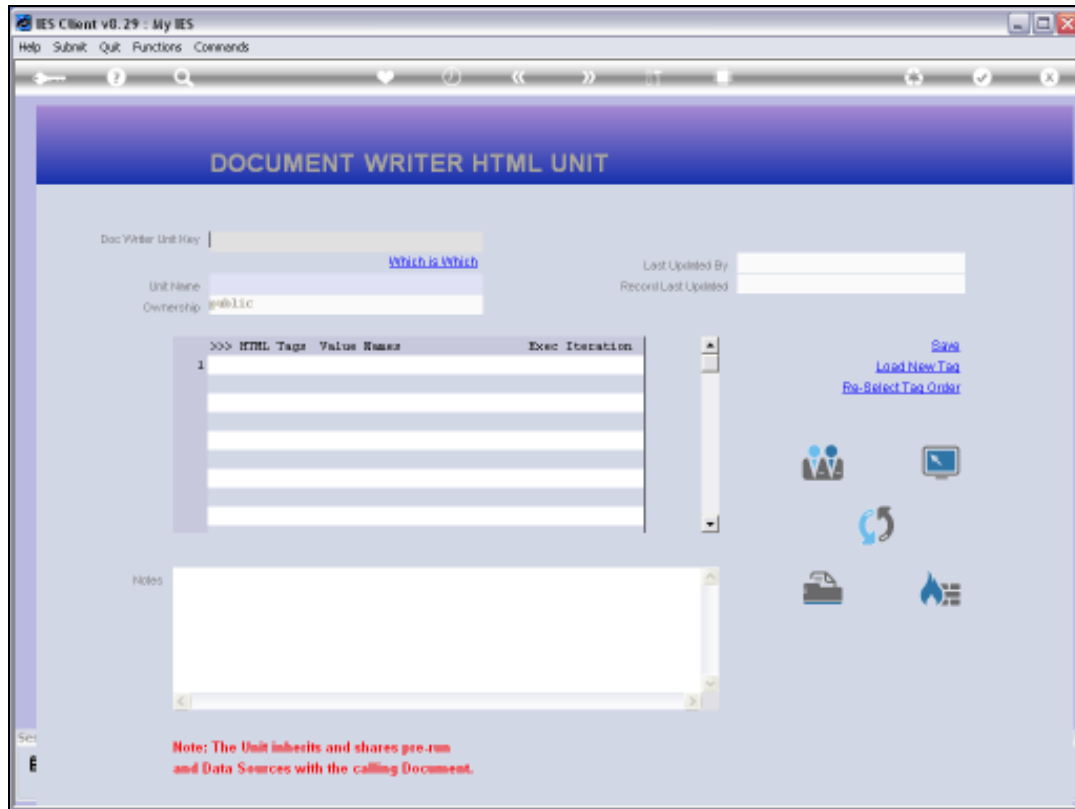
Slide 11

Slide notes:



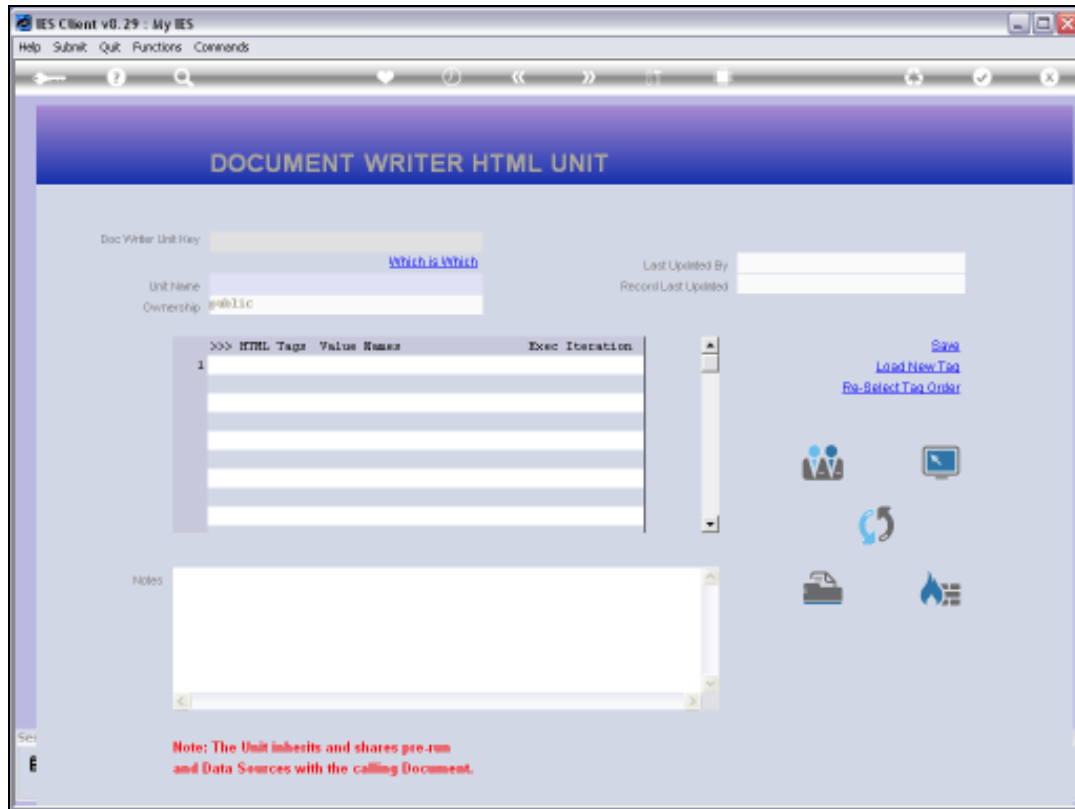
Slide 12

Slide notes:



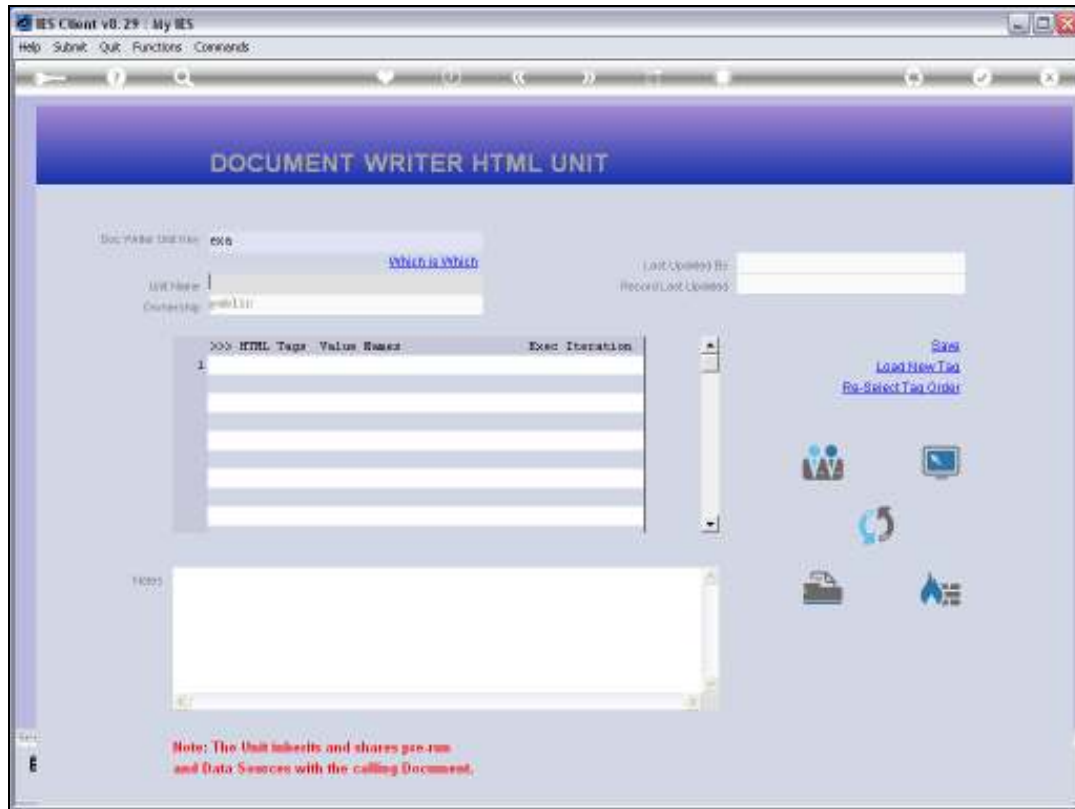
Slide 13

Slide notes:



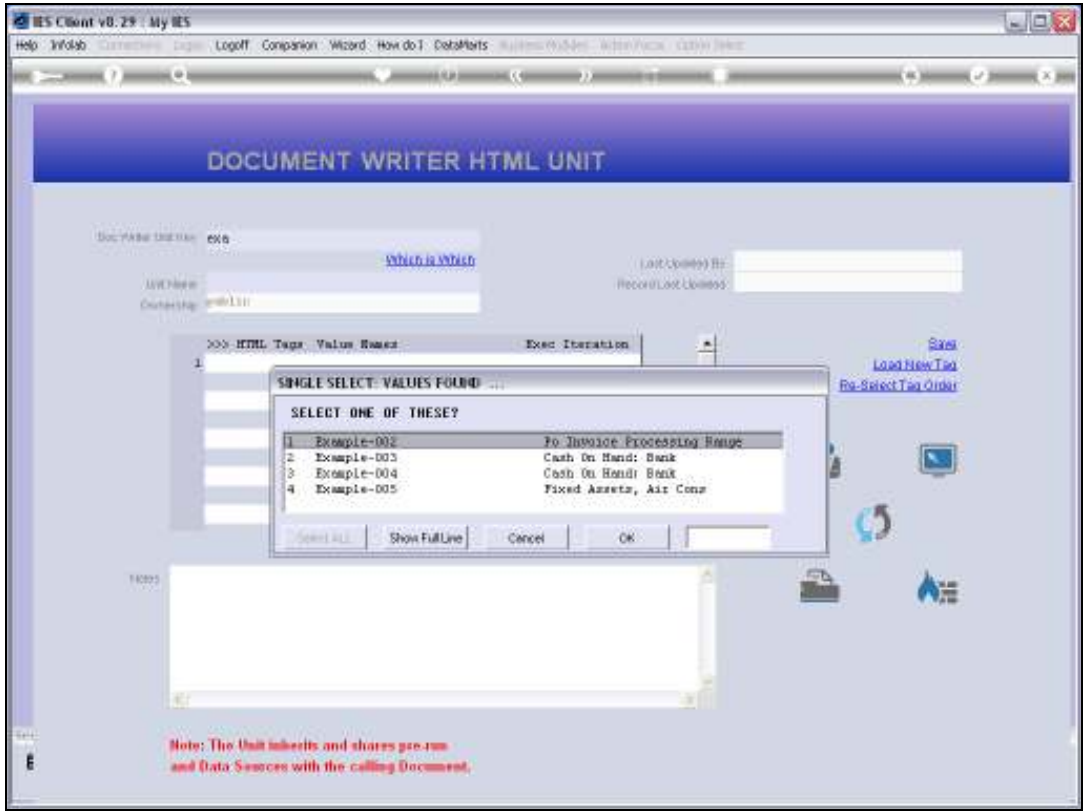
Slide 14

Slide notes:

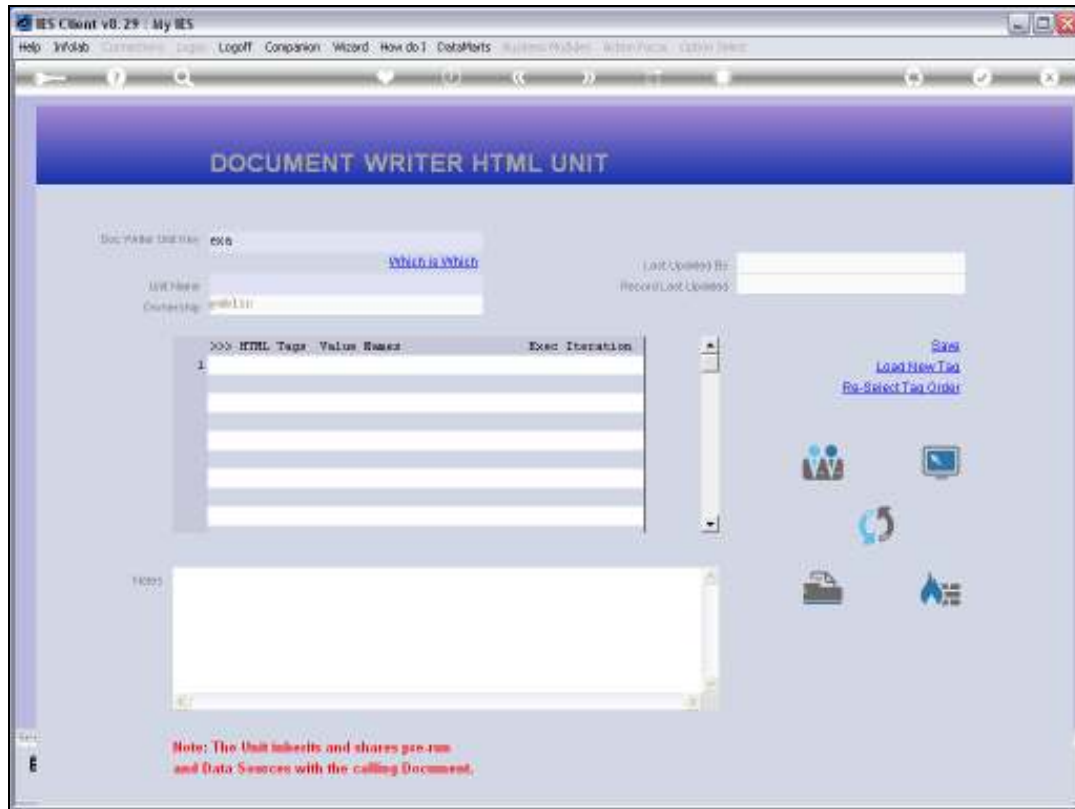


Slide 15

Slide notes:

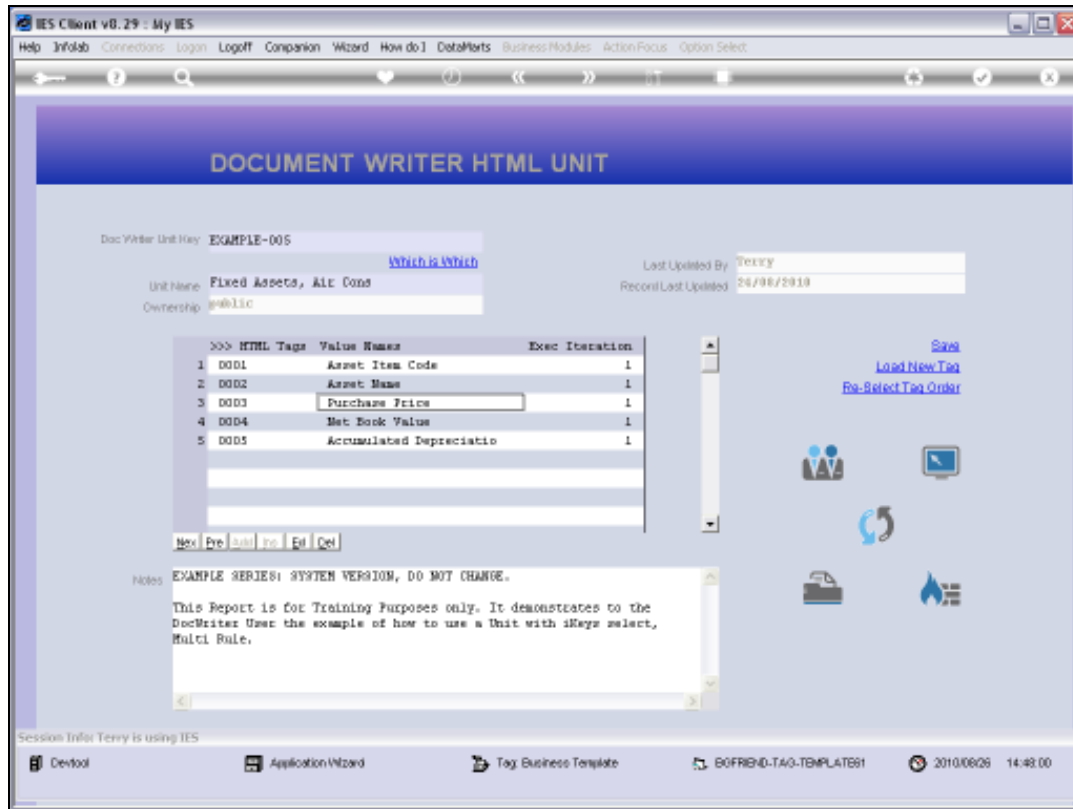


Slide 16
Slide notes:



Slide 17

Slide notes:



Slide 18

Slide notes: When we look at the Purchase Price Tag, we will see which Accumulator it is using.

IES Client v8.29 : My IES

Help Submit Quit Functions Commands

TEMPLATE 061: Iterative Numeric with IKEY select

TAG # 0003

Name PURCHASE PRICE

Data Source Name ATPARAMS ATPARAMS

Data Field Name yprice Purchase Price

Data Field Name (2)

Names Operation 1: no operation

Accumulate to VNC working var 63

Remove Template Copy Template

Reveal Logic Save

Tag Addressing relative

Period Mapping 2: tag maps to current year

Forex Exchange Rate 1: not used

Financial Scaling 1: no scaling

Rounding for Numbers 1: do not apply rounding

Display Mask #102,1

Alignment 1: right justified

Result Width 21

Bold? normal

Underline? normal

Sign Convent? (+/-)

Tag Result always return a result

Operator *

Conditional Value

Session Info: Terry is using IES

Desktop Application Wizard Tag Business Template BOFRIND-TAG-TEMPLATE01 2010/09/29 14:42:02

Slide 19

Slide notes: And it is Accumulator number 63.

IES Client v8.29 : My IES

Help Submit Quit Functions Commands

TEMPLATE 061: Iterative Numeric with IKEY select

Tag # 0003

Name PURCHASE PRICE

Data Source Name ATPARAMS ATPARAMS

Data Field Name pprice Purchase Price

Data Field Name (2)

Names Operation 1: no operation

Accumulate to VNC 60

[Remove Template](#) [Copy Template](#)

[Reveal Logic](#) [Save](#)

Tag Addressing relative

Period Mapping 2: tag maps to current year

Forex Exchange Rate 1: not used

Financial Scaling 1: no scaling

Rounding for Numbers 1: do not apply rounding

Display Mask #102,1

Alignment 1: right justified

Result Width 21

Bold? normal

Underline? normal

☐ Sign Convert ? (+/-)

Tag Result always return a result

Operator *

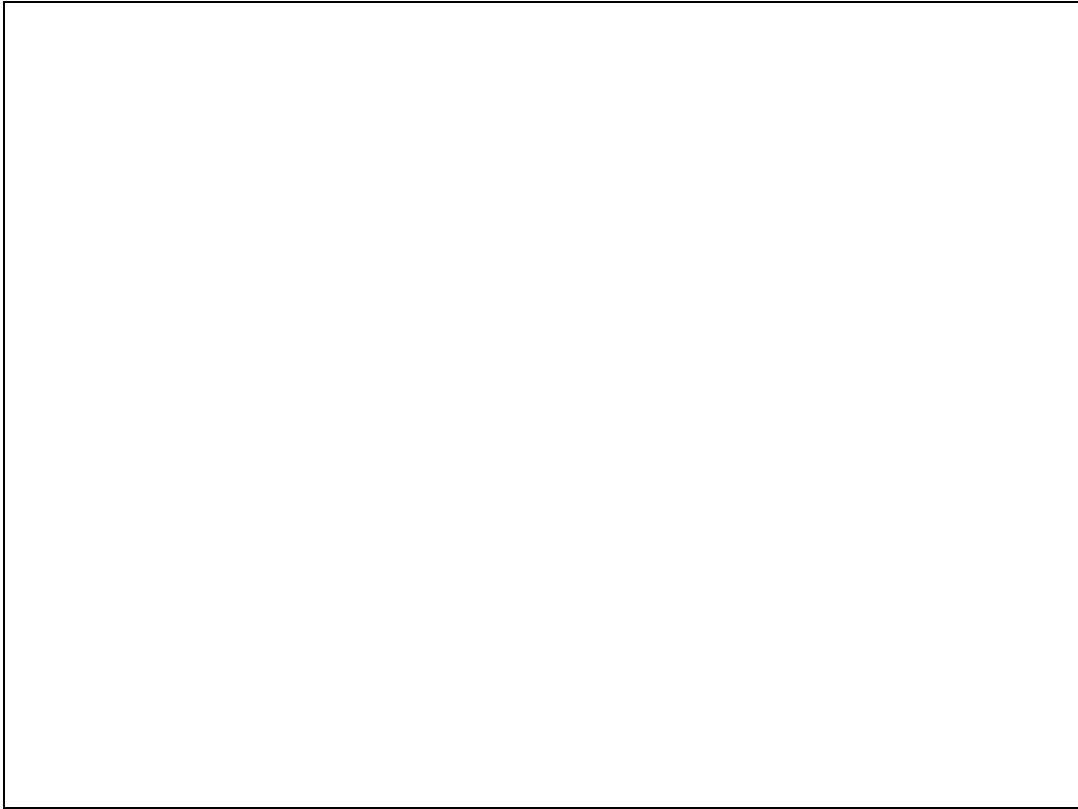
Conditional Value

Session Info: Terry is using IES

Desktop Application Wizard Tag Business Template BOFRIND-TAG-TEMPLATE01 2010/09/29 14:42:05

Slide 20

Slide notes:



Slide 21

Slide notes:

IES Client v8.29 : My IES

Help Submit Quit Functions Commands

TEMPLATE 061: Iterative Numeric with IKEY select

Tag # 0003

Name PURCHASE PRICE

Data Source Name ATPARAMS ATPARAMS

Data Field Name yprice Purchase Price

Data Field Name (2)

Names Operation 1: no operation

Accumulate to VNC 60

[Remove Template](#) [Copy Template](#)

[Reveal Logic](#) [Save](#)

Tag Addressing relative

Period Mapping 2: tag maps to current year

Forex Exchange Rate 1: not used

Financial Scaling 1: no scaling

Rounding for Numbers 1: do not apply rounding

Display Mask #102,1

Alignment 1: right justified

Result Width 21

Bold? normal

Underline? normal

☐ Sign Convert ? (+/-)

Tag Result always return a result

Operator *

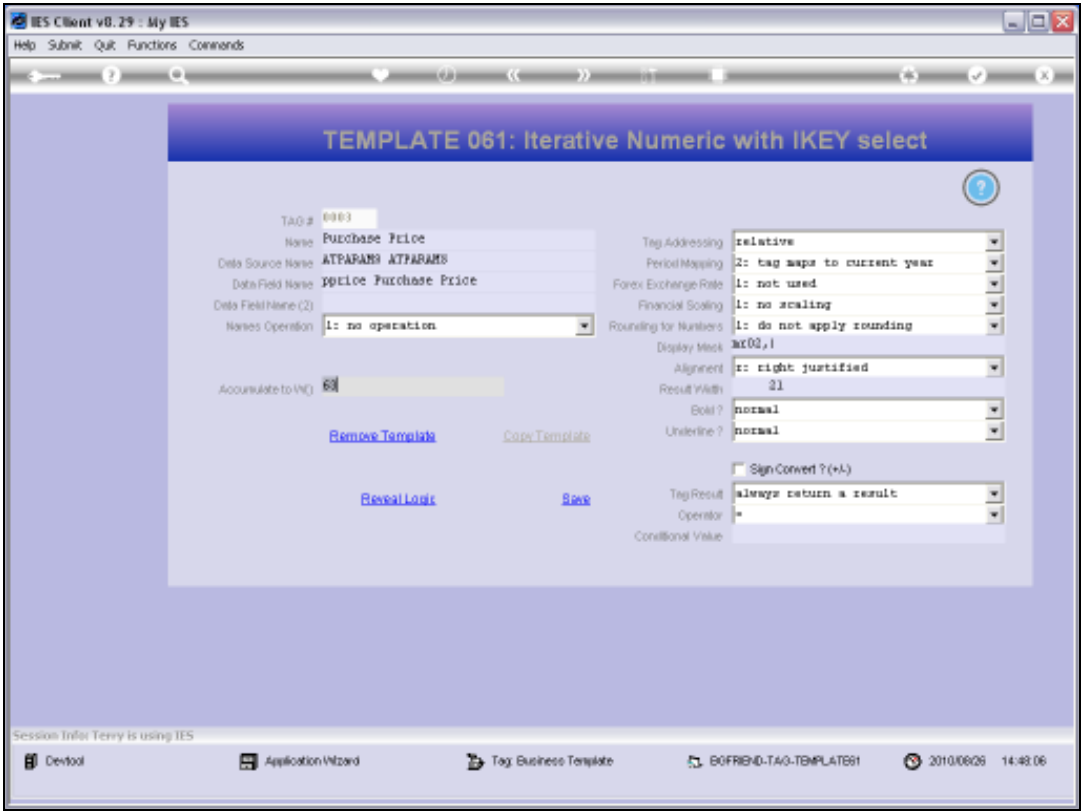
Conditional Value

Session Info: Terry is using IES

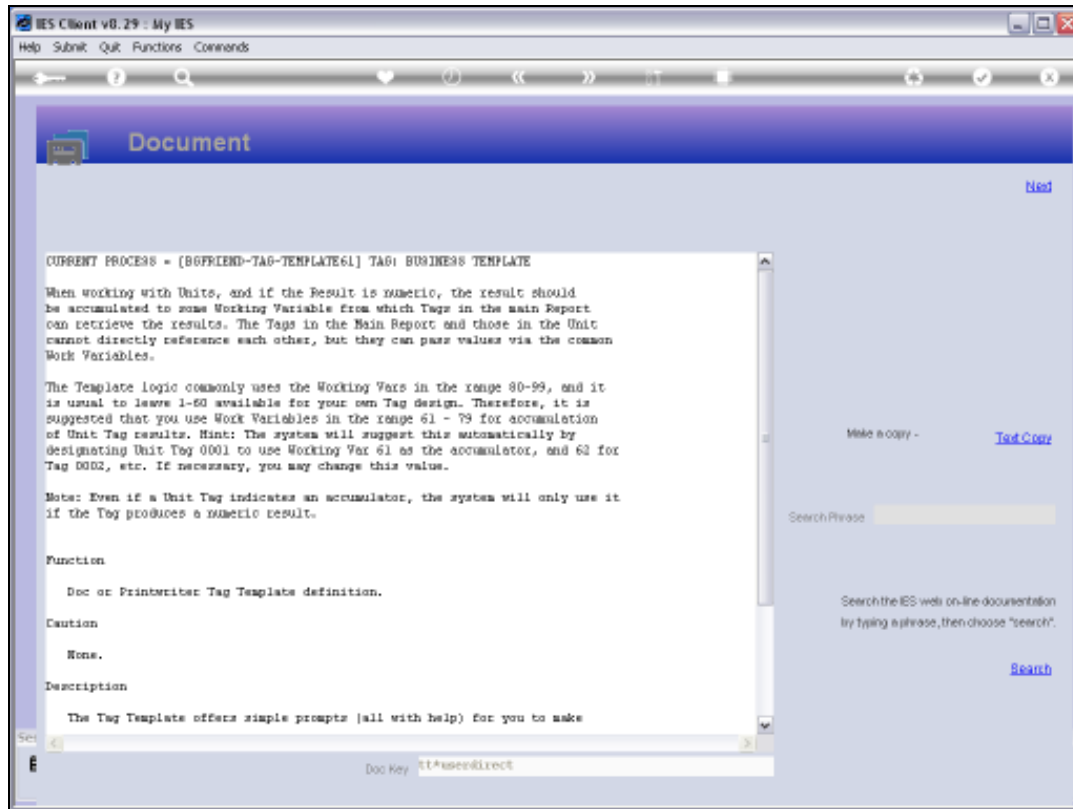
Desktop Application Wizard Tag Business Template BOFRIND-TAG-TEMPLATE01 2010/09/29 14:42:05

Slide 22

Slide notes:

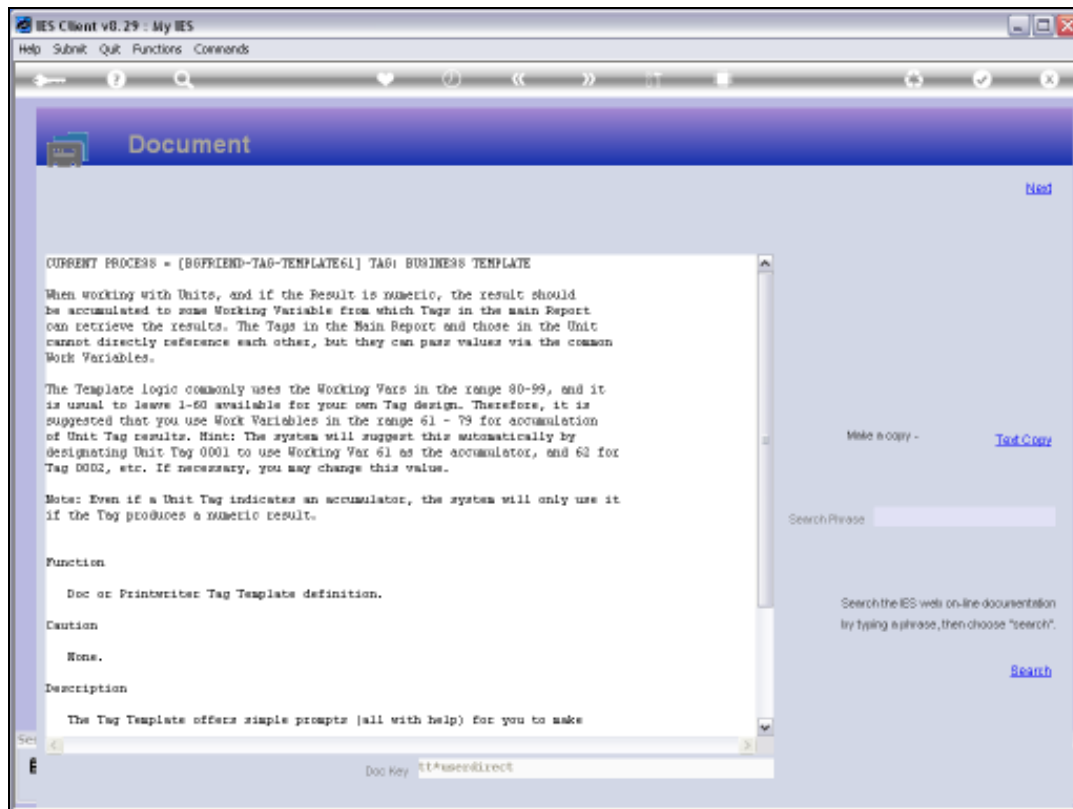


Slide 23
Slide notes:



Slide 24

Slide notes: The Help explains about the available Accumulators, and which to use when. We can also use these Accumulators in Macro Logic, and therefore it is useful to understand which ranges are good to use with Tag Templates.



Slide 25

Slide notes:

IES Client v8.29 : My IES

Help Submit Quit Functions Commands

TEMPLATE 061: Iterative Numeric with IKEY select

Tag # 0003

Name PURCHASE PRICE

Data Source Name ATPARAMS ATPARAMS

Data Field Name yprice Purchase Price

Data Field Name (2)

Names Operation 1: no operation

Accumulate to VNC 60

[Remove Template](#) [Copy Template](#)

[Reveal Logic](#) [Save](#)

Tag Addressing relative

Period Mapping 2: tag maps to current year

Forex Exchange Rate 1: not used

Financial Scaling 1: no scaling

Rounding for Numbers 1: do not apply rounding

Display Mask #102,1

Alignment 1: right justified

Result Width 21

Bold? normal

Underline? normal

☐ Sign Convert ? (+/-)

Tag Result always return a result

Operator *

Conditional Value

Session Info: Terry is using IES

Desktop Application Wizard Tag Business Template BOFRIND-TAG-TEMPLATE01 2010/09/29 14:42:12

Slide 26

Slide notes:

IES Client v8.29 : My IES

Help Submit Quit Functions Commands

TEMPLATE 061: Iterative Numeric with IKEY select

TAG # 0003

Name PURCHASE PRICE

Data Source Name ATPARAMS ATPARAMS

Data Field Name yprice Purchase Price

Data Field Name (2)

Names Operation 1: no operation

Accumulate to VNC 63

Remove Template Copy Template

Reveal Logic Save

Tag Addressing relative

Period Mapping 2: tag maps to current year

Forex Exchange Rate 1: not used

Financial Scaling 1: no scaling

Rounding for Numbers 1: do not apply rounding

Display Mask #102,1

Alignment 1: right justified

Result Width 21

Bold? normal

Underline? normal

Sign Convent? (+/-)

Tag Result always return a result

Operator *

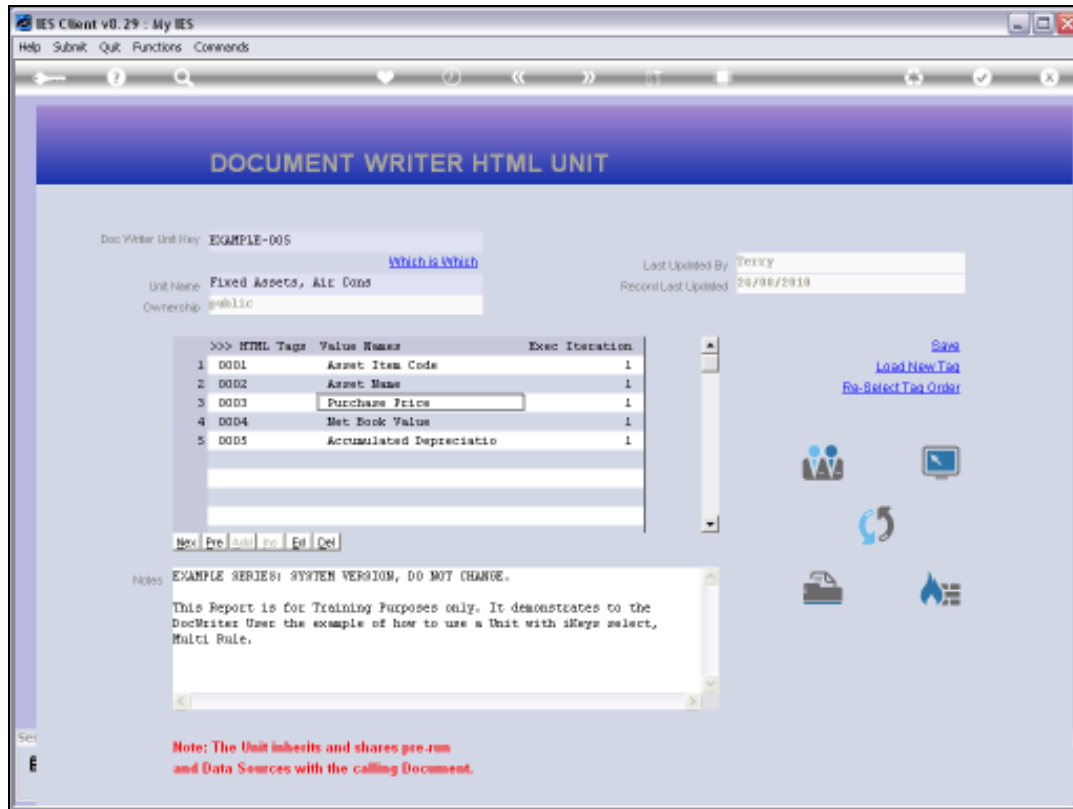
Conditional Value

Session Info: Terry is using IES

Desktop Application Wizard Tag Business Template BOFRIND-TAG-TEMPLATE01 2010/09/29 14:42:12

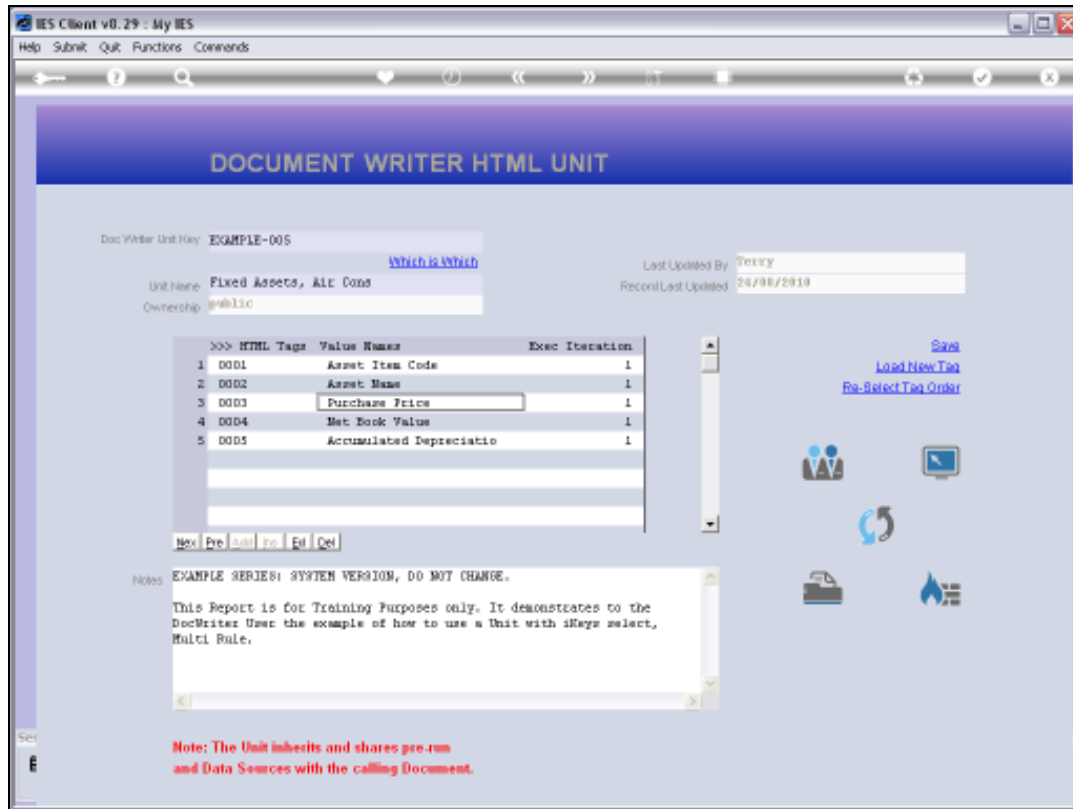
Slide 27

Slide notes: So that means that the Tag in the Main Document should get its total from Accumulator number 63.



Slide 28

Slide notes:



Slide 29

Slide notes:



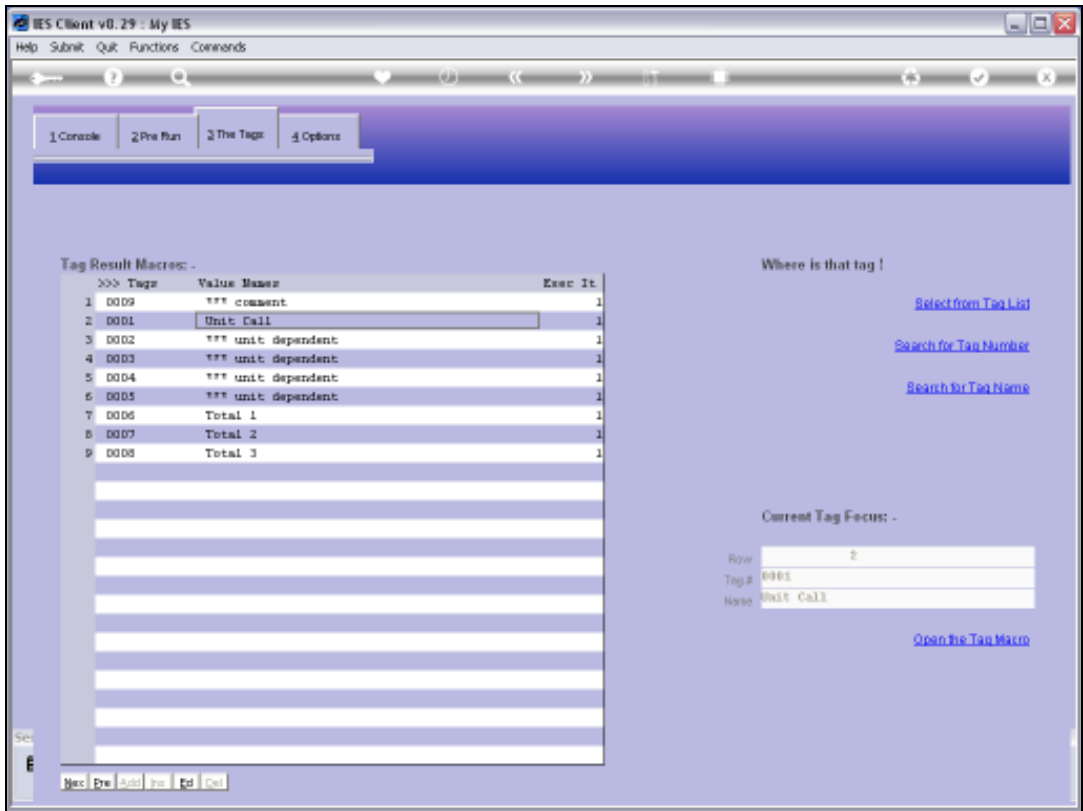
Slide 30

Slide notes:

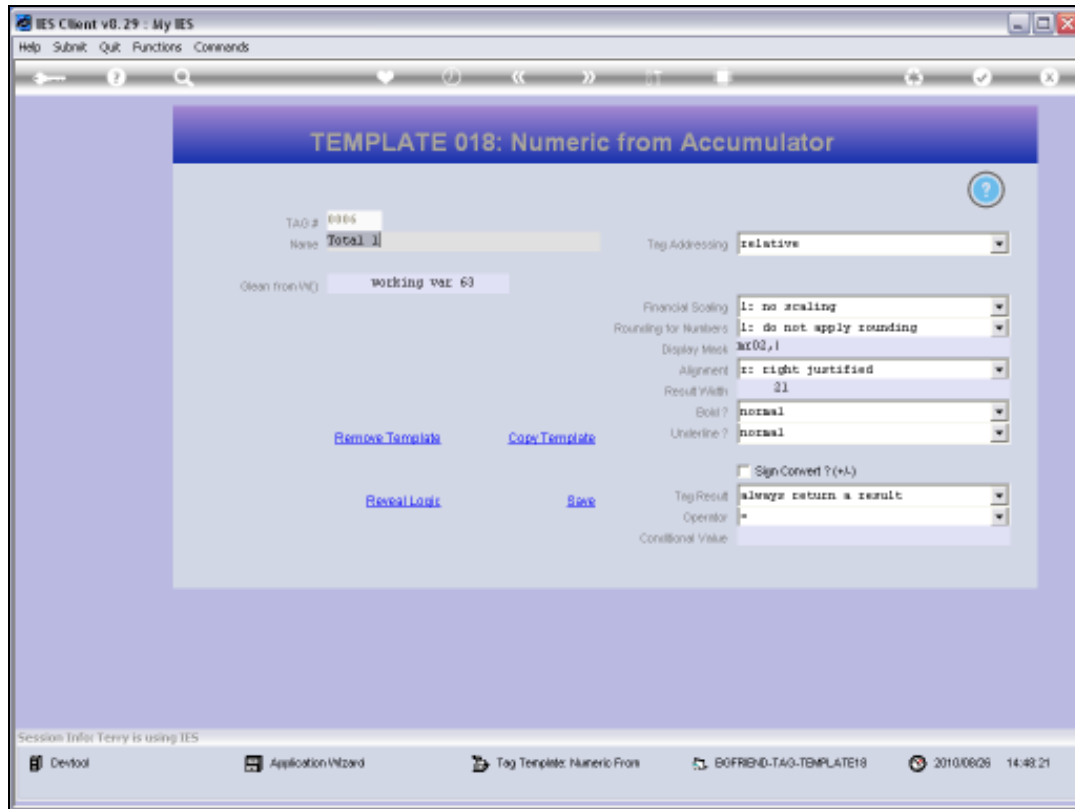


Slide 31

Slide notes:



Slide 32
Slide notes: Total 1 is the Tag for the Purchase Price Column Total.



Slide 33

Slide notes: It is using the Template for Numeric from Accumulator, and it gets the total from Accumulator number 63. So this is a good example of how we use the Template for Numeric from Accumulator.

The screenshot shows the IES Client v8.29 interface. The main window is titled "TEMPLATE 018: Numeric from Accumulator". It contains several input fields and dropdown menus for configuring a tag template. The "TAG #:" field is set to "0006". The "Name:" field is set to "Total 31". The "Tag Addressing:" dropdown is set to "relative". The "Clean from VNC" checkbox is checked. The "working var 63" is displayed. The "Financial Scaling:" dropdown is set to "1: no scaling". The "Rounding for Numbers:" dropdown is set to "1: do not apply rounding". The "Display Mask:" field is set to "M02,1". The "Alignment:" dropdown is set to "1: right justified". The "Result Width:" field is set to "31". The "Bold?" dropdown is set to "normal". The "Underline?" dropdown is set to "normal". The "Sign Convent ? (+/-)" checkbox is checked. The "Tag Result:" dropdown is set to "always return a result". The "Operator:" dropdown is set to "+". The "Conditional Value:" field is empty. There are buttons for "Remove Template", "Copy Template", "Reveal Logic", and "Save". The status bar at the bottom shows "Session Info: Terry is using IES" and "2010/09/29 14:43:21".

IES Client v8.29 : My IES

Help Submit Quit Functions Commands

← ? 🔍 ♥ 🔄 ⏪ ⏩ 📄

TEMPLATE 018: Numeric from Accumulator

TAG #

Name

Tag Addressing

Clean from VNC ☒ working var 63

Financial Scaling

Rounding for Numbers

Display Mask

Alignment

Result Width

Bold ?

Underline ?

☒ Sign Convent ? (+/-)

Tag Result

Operator

Conditional Value

[Remove Template](#) [Copy Template](#)

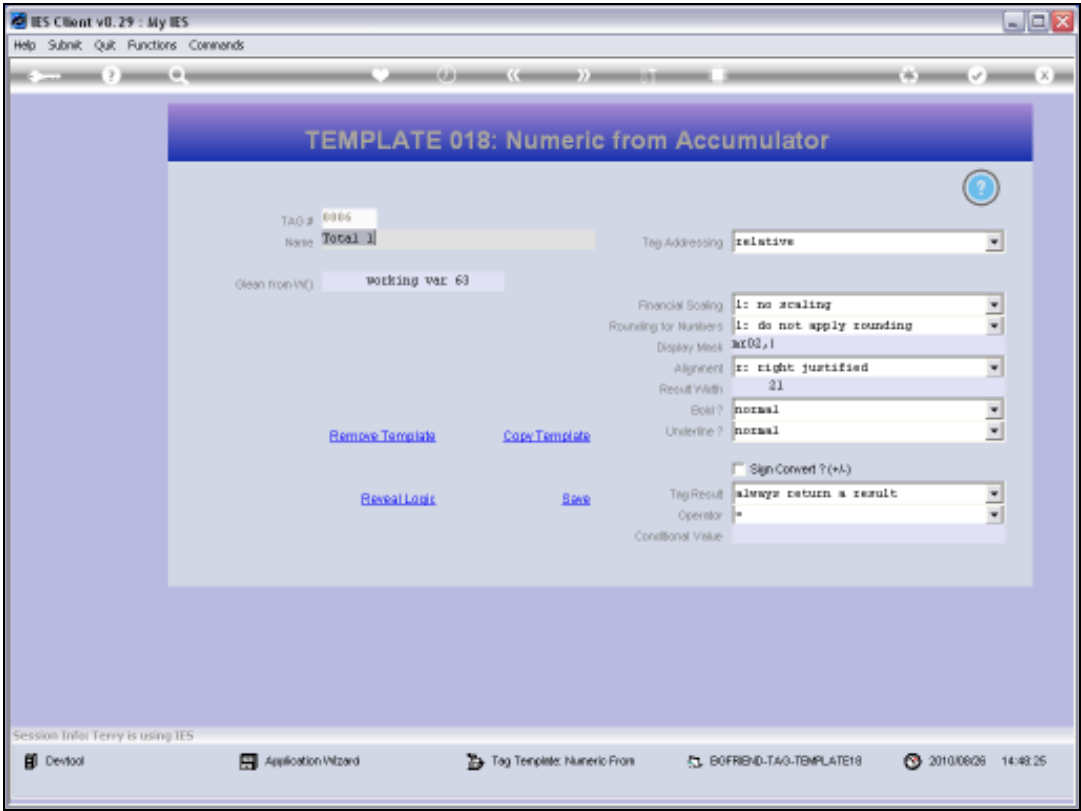
[Reveal Logic](#) [Save](#)

Session Info: Terry is using IES

Desktop Application Wizard Tag Template: Numeric From BOFRID-TAG-TEMPLATE18 2010/09/29 14:43:21

Slide 34

Slide notes:



Slide 35
Slide notes:

The screenshot shows the IES Client v8.29 interface. The main window is titled "TEMPLATE 018: Numeric from Accumulator". It contains several input fields and dropdown menus for configuring a tag template. The "TAG #:" field is set to "0006", and the "Name:" field is set to "Total 1". The "Tag Addressing:" dropdown is set to "relative". The "Clean from VNC:" checkbox is checked. The "Financial Scaling:" dropdown is set to "1: no scaling", and the "Rounding for Numbers:" dropdown is set to "1: do not apply rounding". The "Display Mask:" field is set to "M02,I". The "Alignment:" dropdown is set to "r: right justified", and the "Result Width:" field is set to "21". The "Bold?" dropdown is set to "normal", and the "Underline?" dropdown is set to "normal". The "Sign Convert ? (+/-)" checkbox is checked. The "Tag Result:" dropdown is set to "always return a result", and the "Operator:" dropdown is set to "+". The "Conditional Value:" field is empty. There are four buttons: "Remove Template", "Copy Template", "Reveal Logic", and "Save". The status bar at the bottom shows "Session Info: Terry is using IES" and a list of open applications: "Devtool", "Application Wizard", "Tag Template: Numeric From", "BOFRID-TAG-TEMPLATE18", and a clock showing "2010/09/28 14:43:27".

IES Client v8.29 : My IES

Help Submit Quit Functions Commands

← ? 🔍 ♥ 🔄 ⏪ ⏩ 📄

TEMPLATE 018: Numeric from Accumulator

TAG #

Name

Tag Addressing

Clean from VNC ☒

Financial Scaling

Rounding for Numbers

Display Mask

Alignment

Result Width

Bold?

Underline?

☒ Sign Convert ? (+/-)

Tag Result

Operator

Conditional Value

[Remove Template](#) [Copy Template](#)

[Reveal Logic](#) [Save](#)

Session Info: Terry is using IES

Devtool Application Wizard Tag Template: Numeric From BOFRID-TAG-TEMPLATE18 2010/09/28 14:43:27

Slide 36

Slide notes: