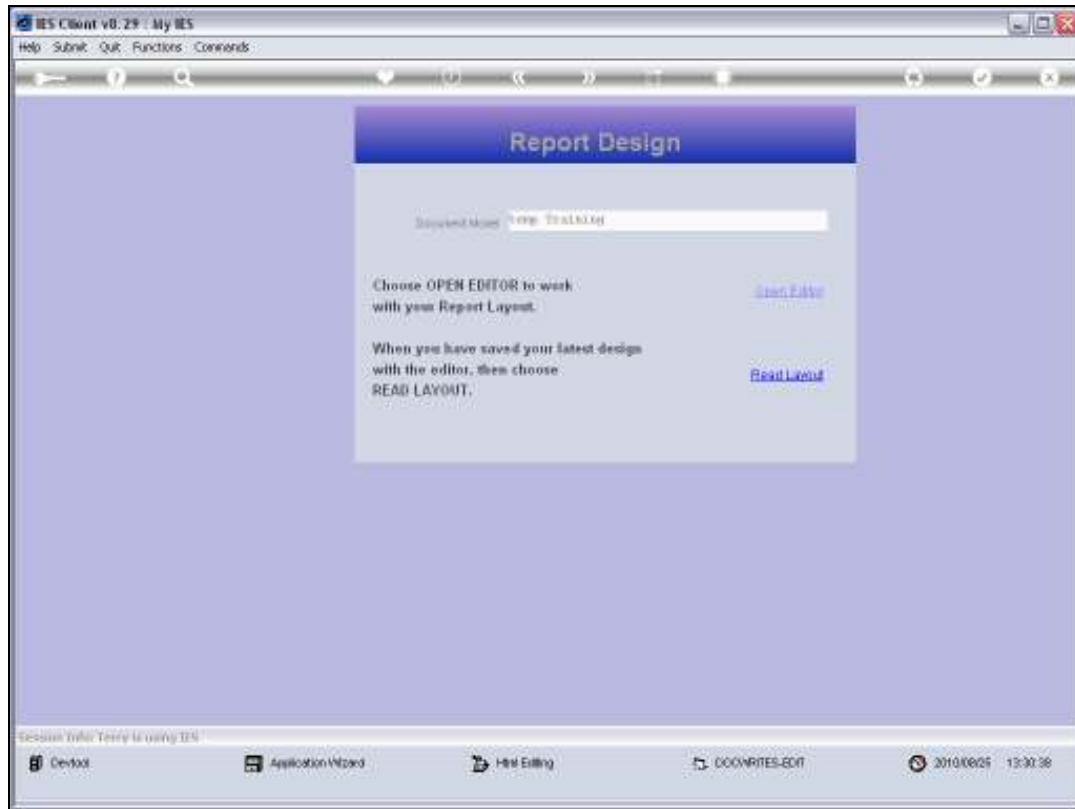




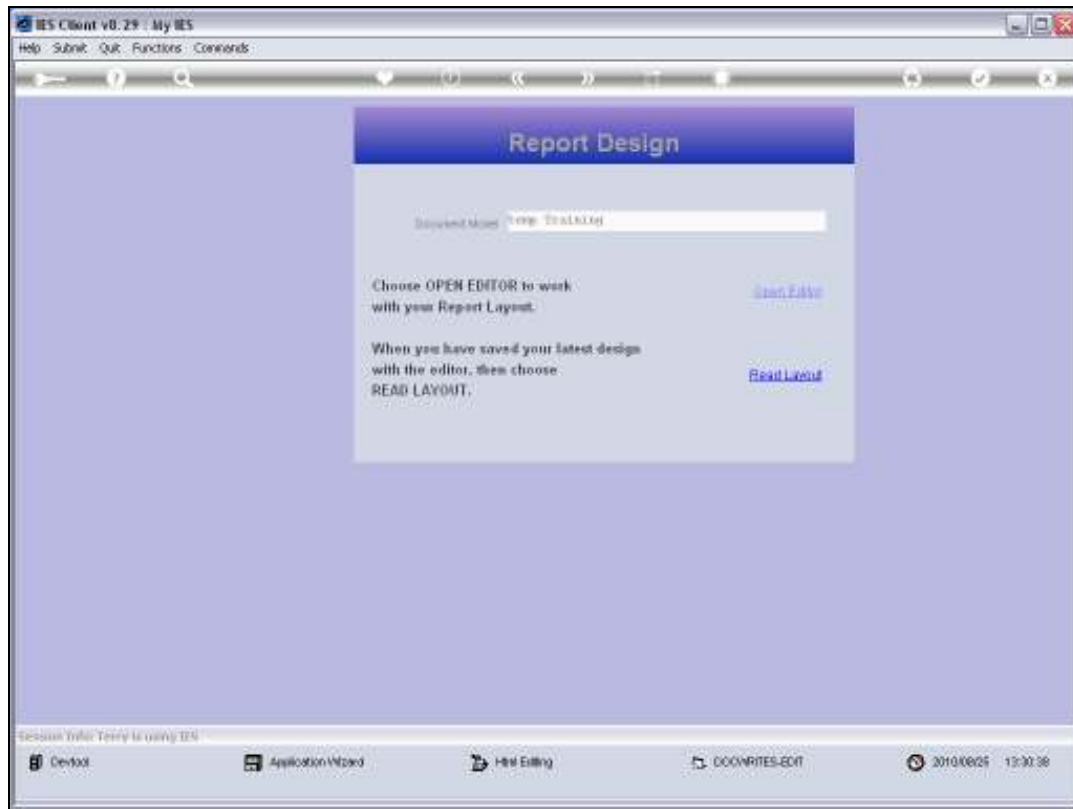
Slide 1

Slide notes: We are starting a new Report Layout now, and we are going to demonstrate how we can include Pictures in our Report.



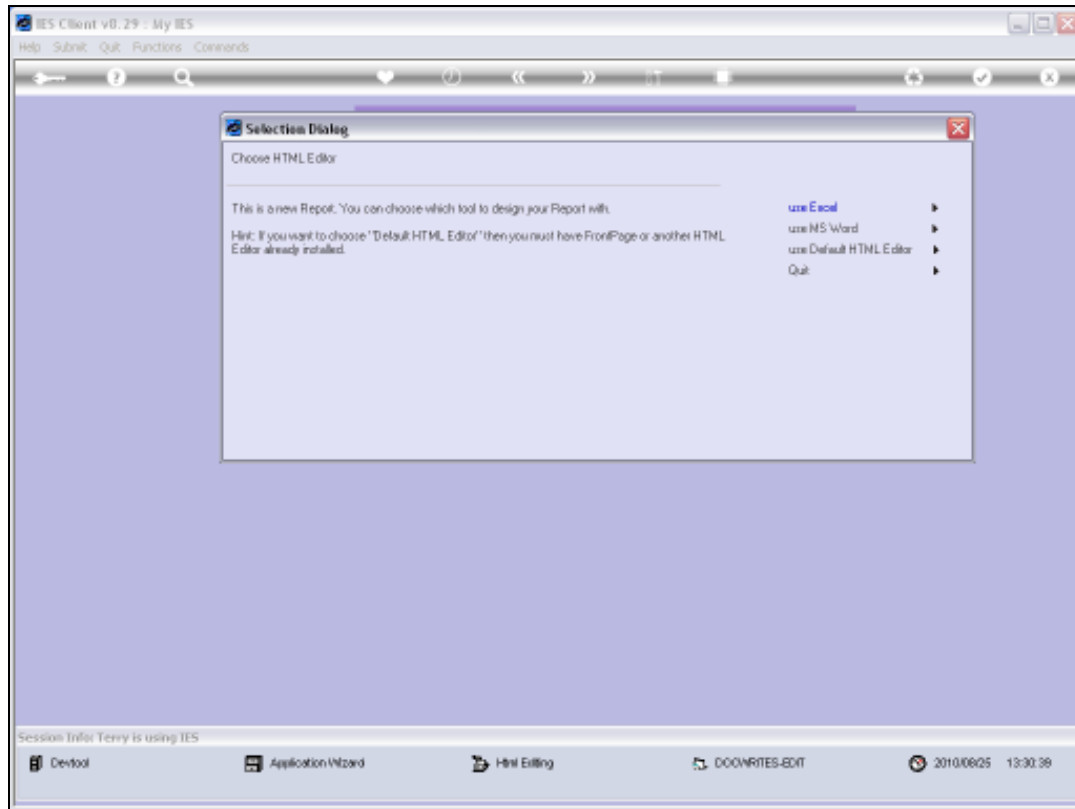
Slide 2

Slide notes:



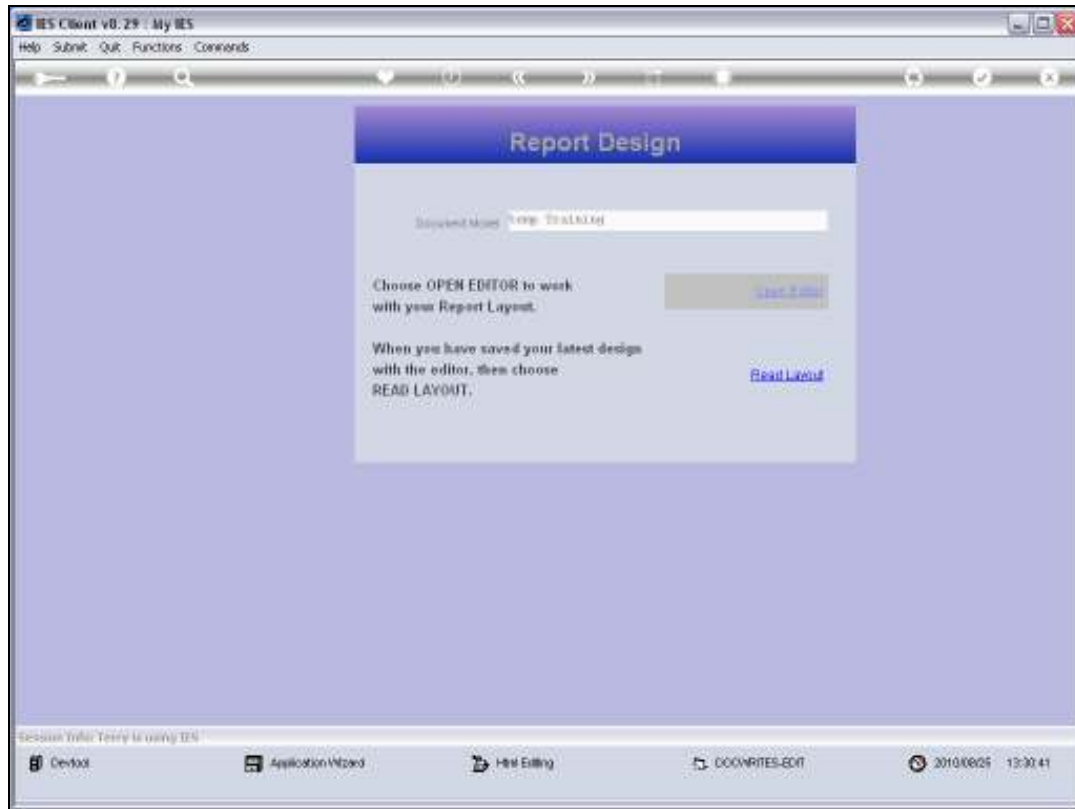
Slide 3

Slide notes:



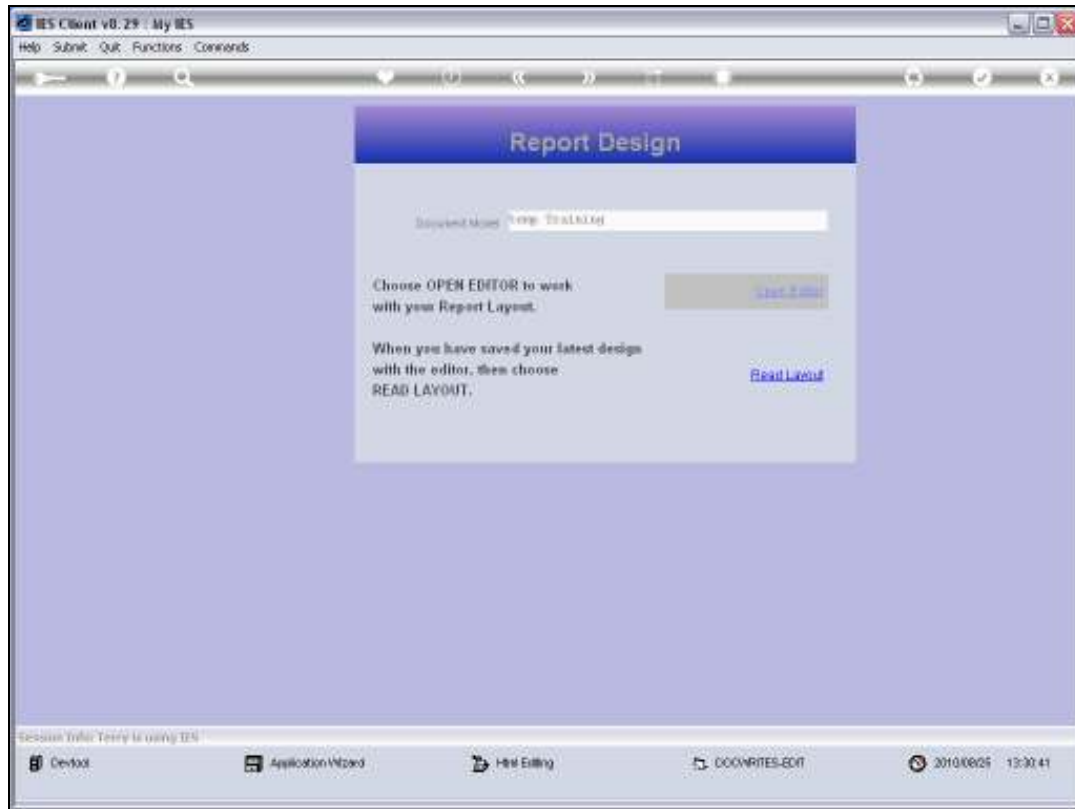
Slide 4

Slide notes:



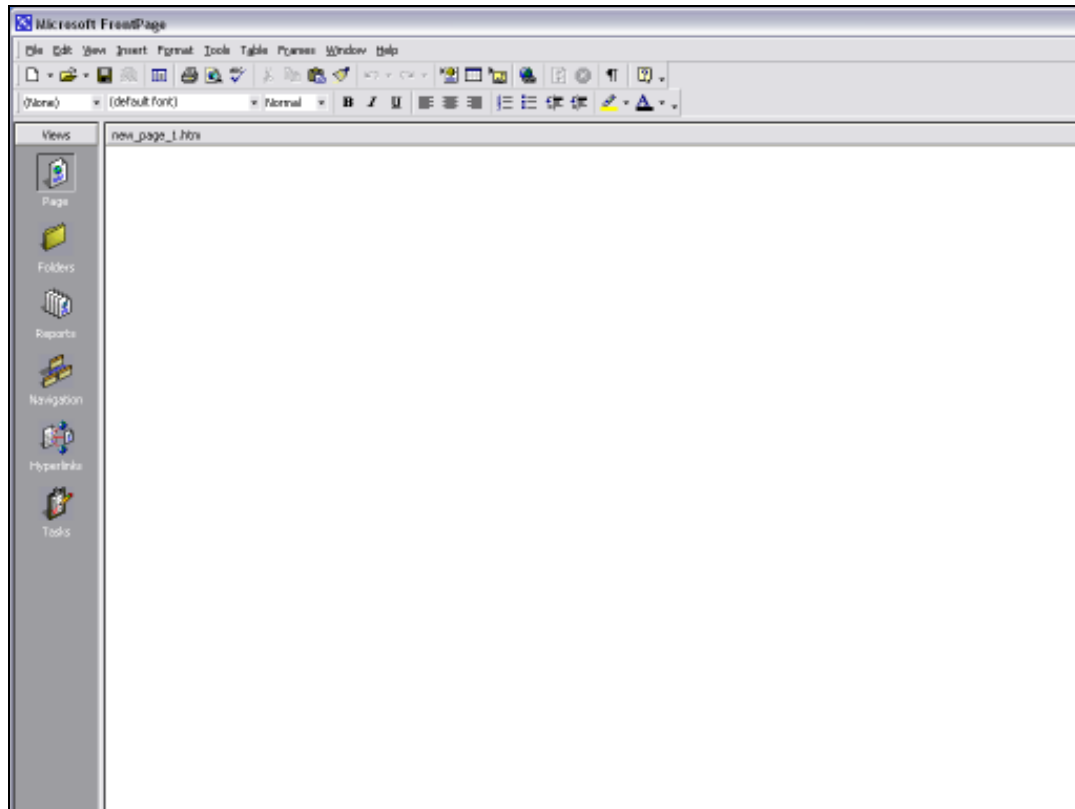
Slide 5

Slide notes:



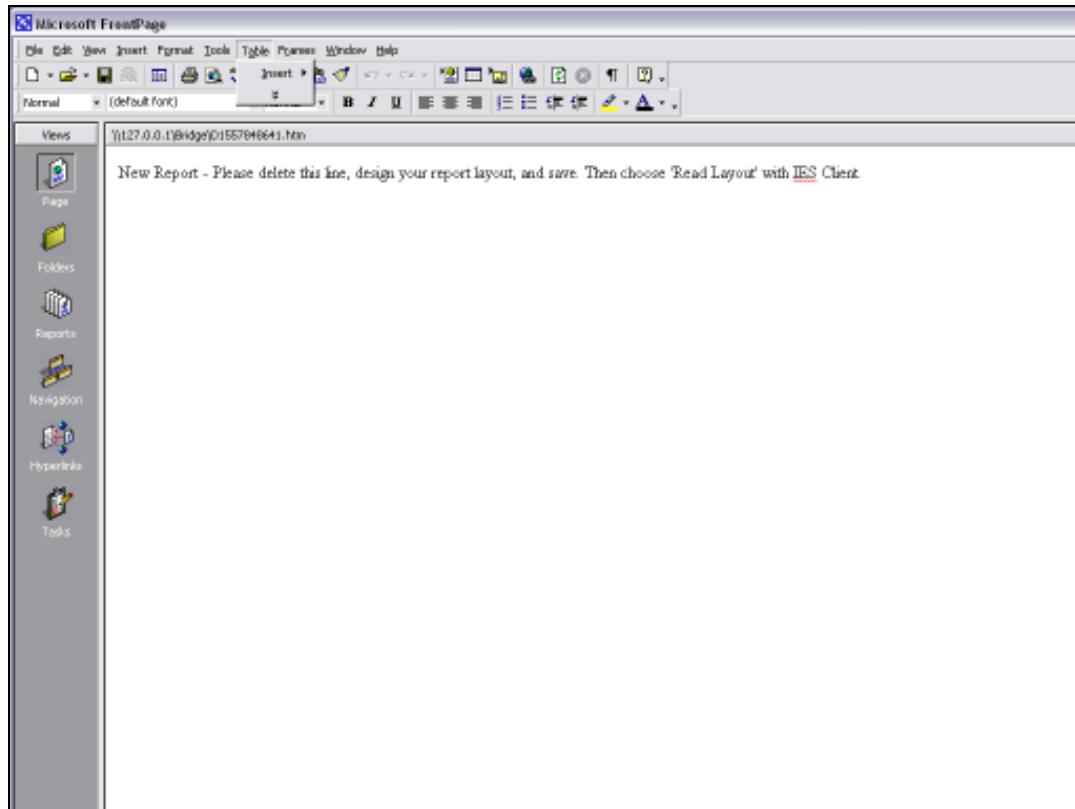
Slide 6

Slide notes:



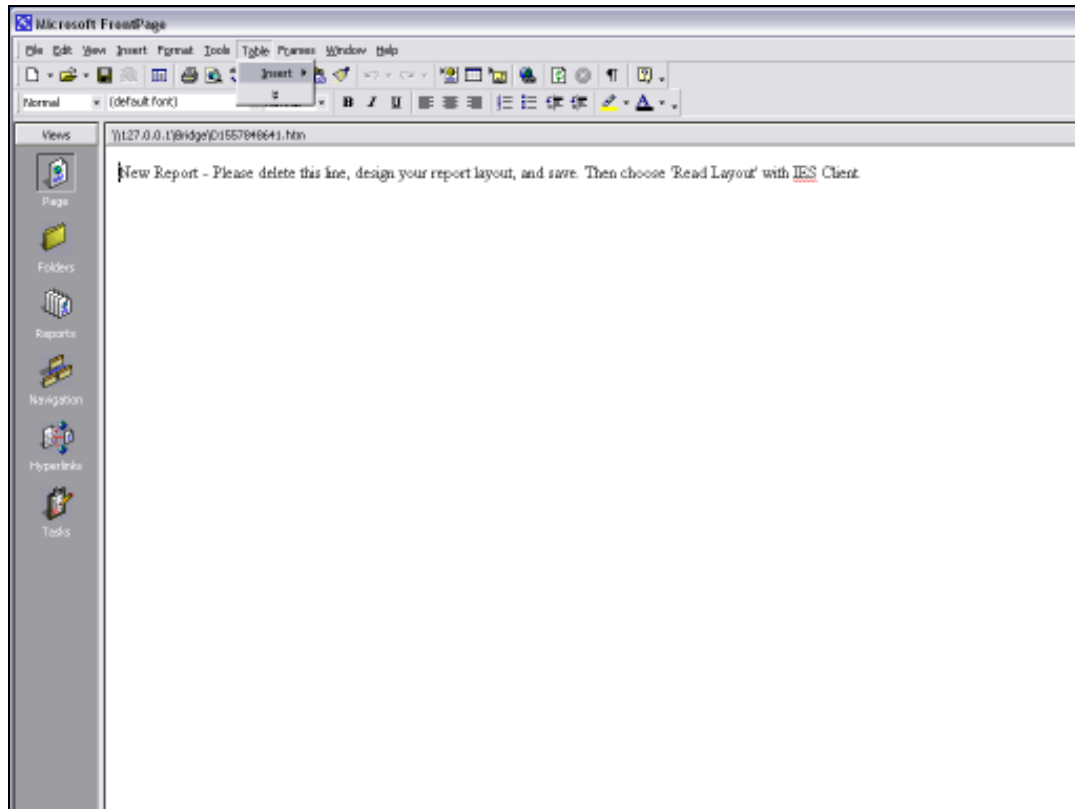
Slide 7

Slide notes:



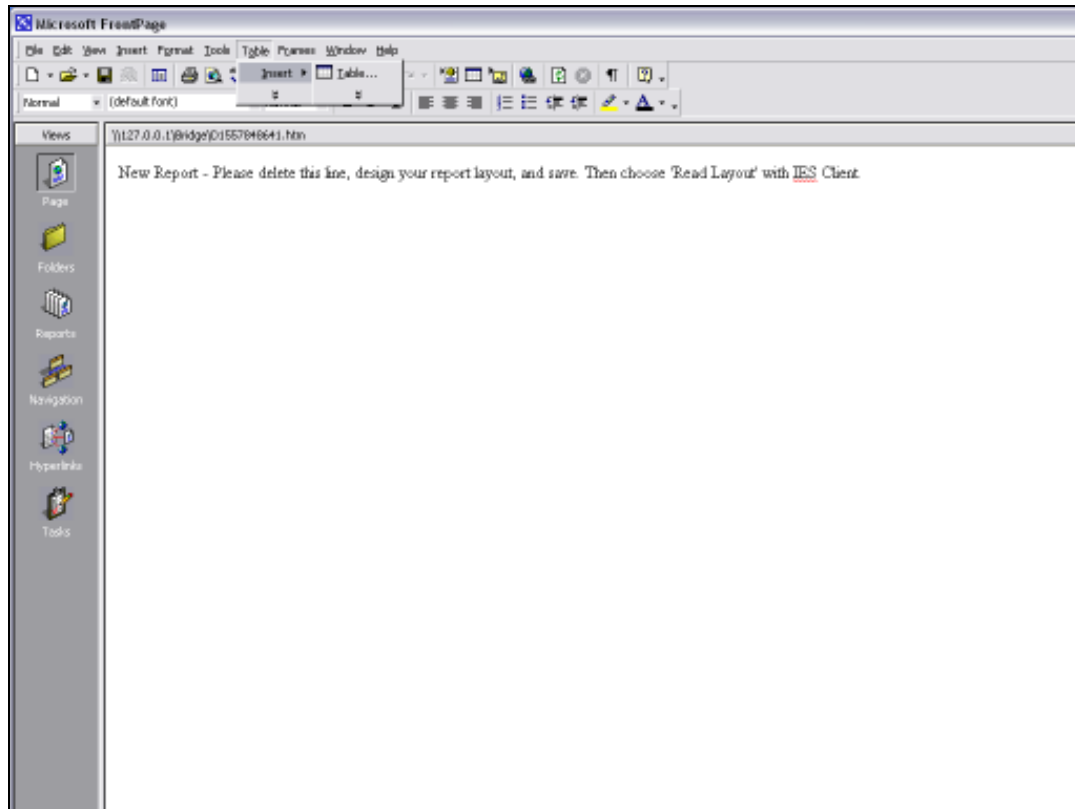
Slide 8

Slide notes:



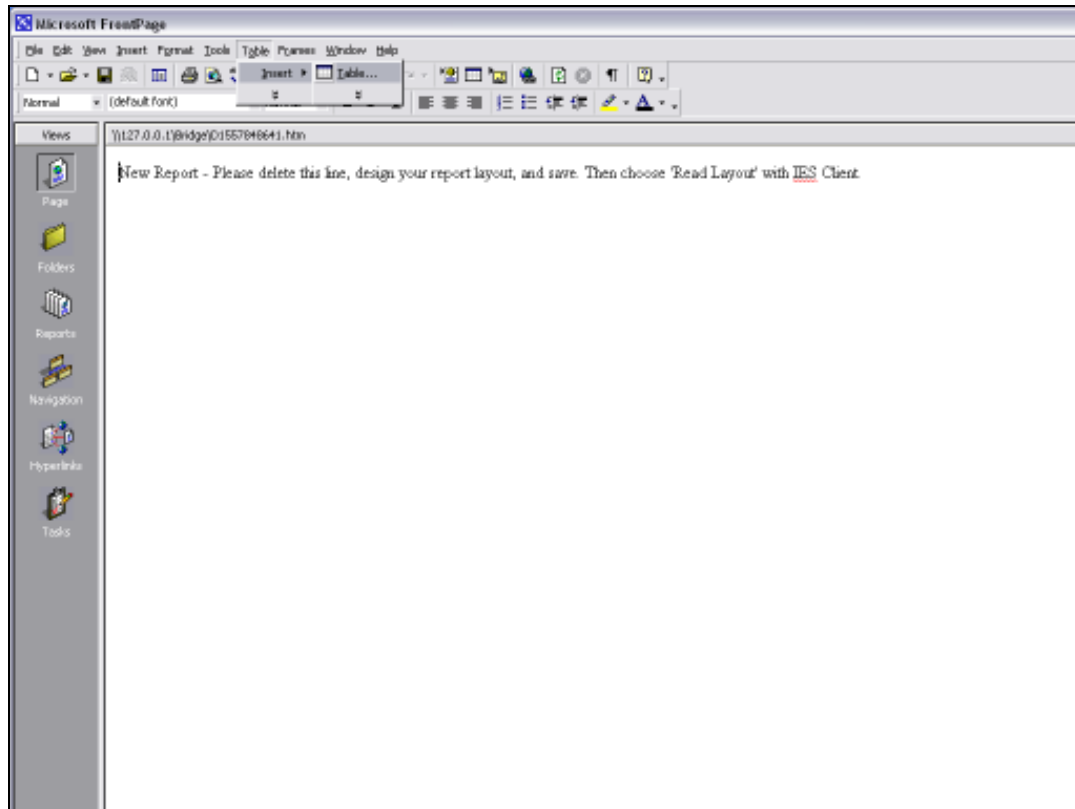
Slide 9

Slide notes:



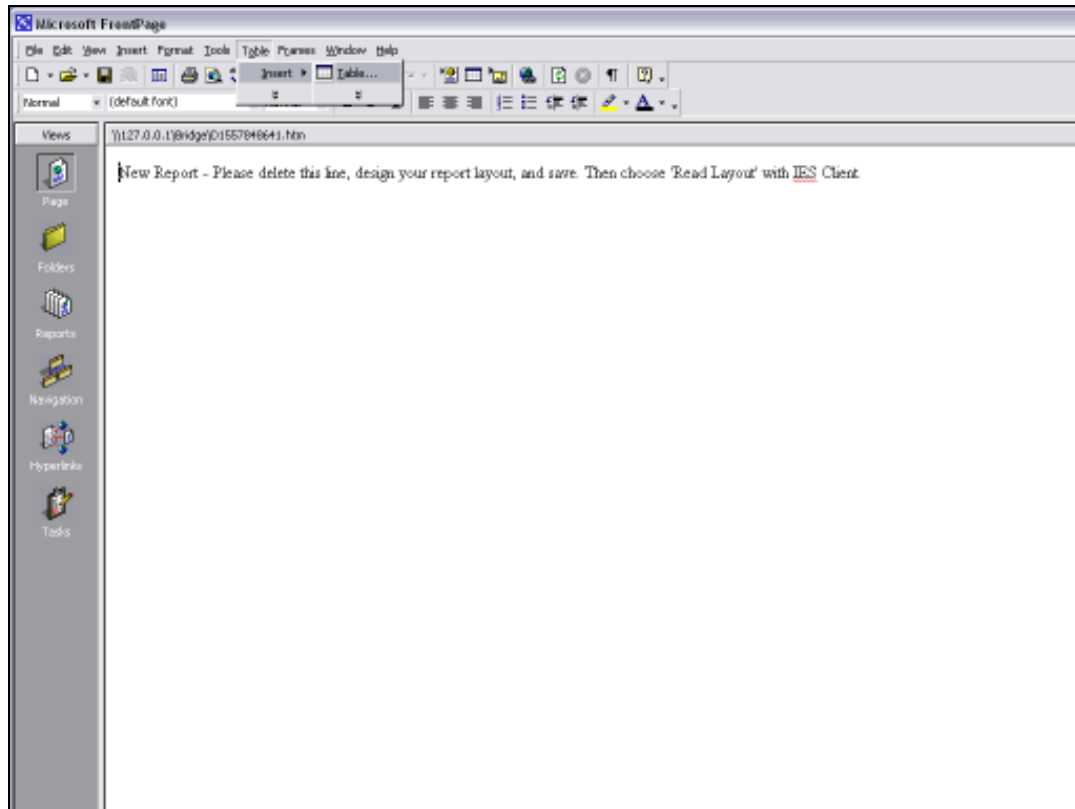
Slide 10

Slide notes:



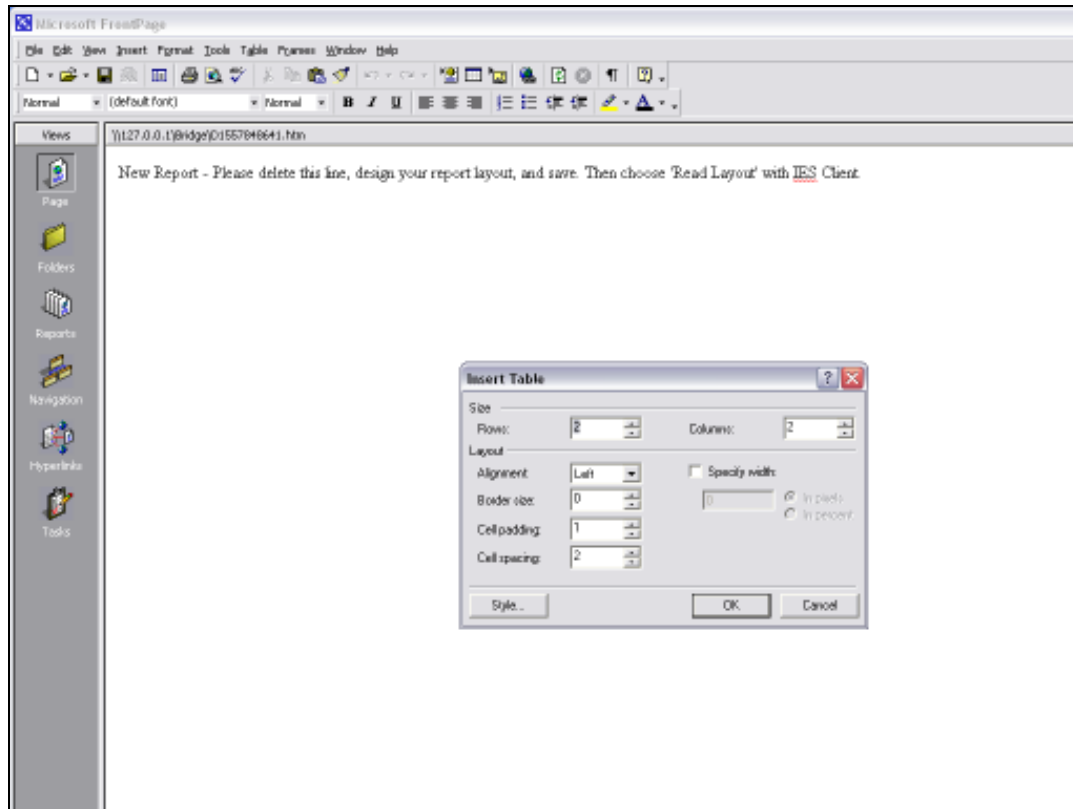
Slide 11

Slide notes:



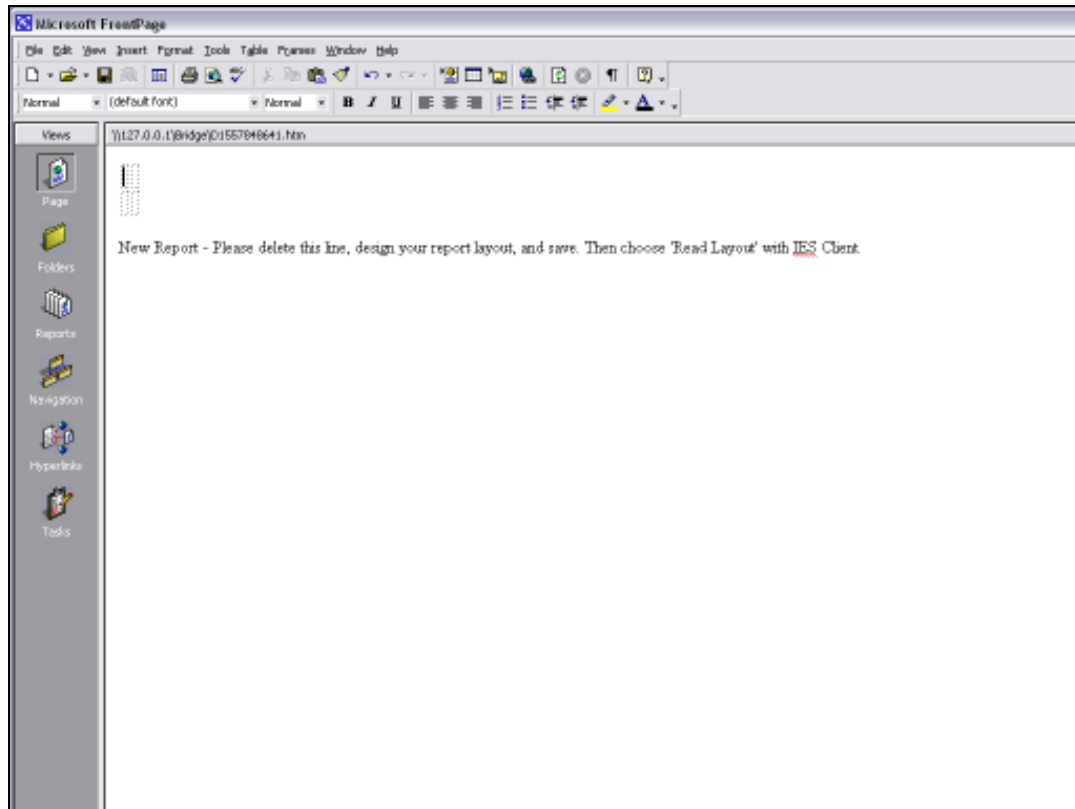
Slide 12

Slide notes:



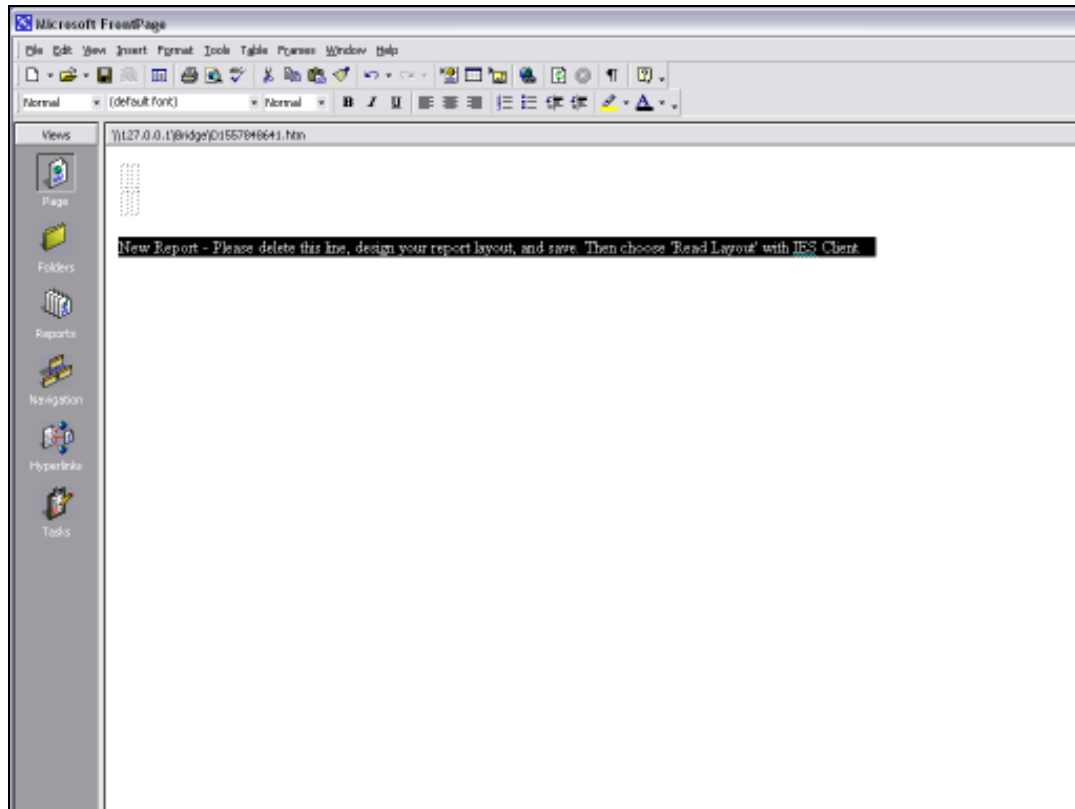
Slide 13

Slide notes:



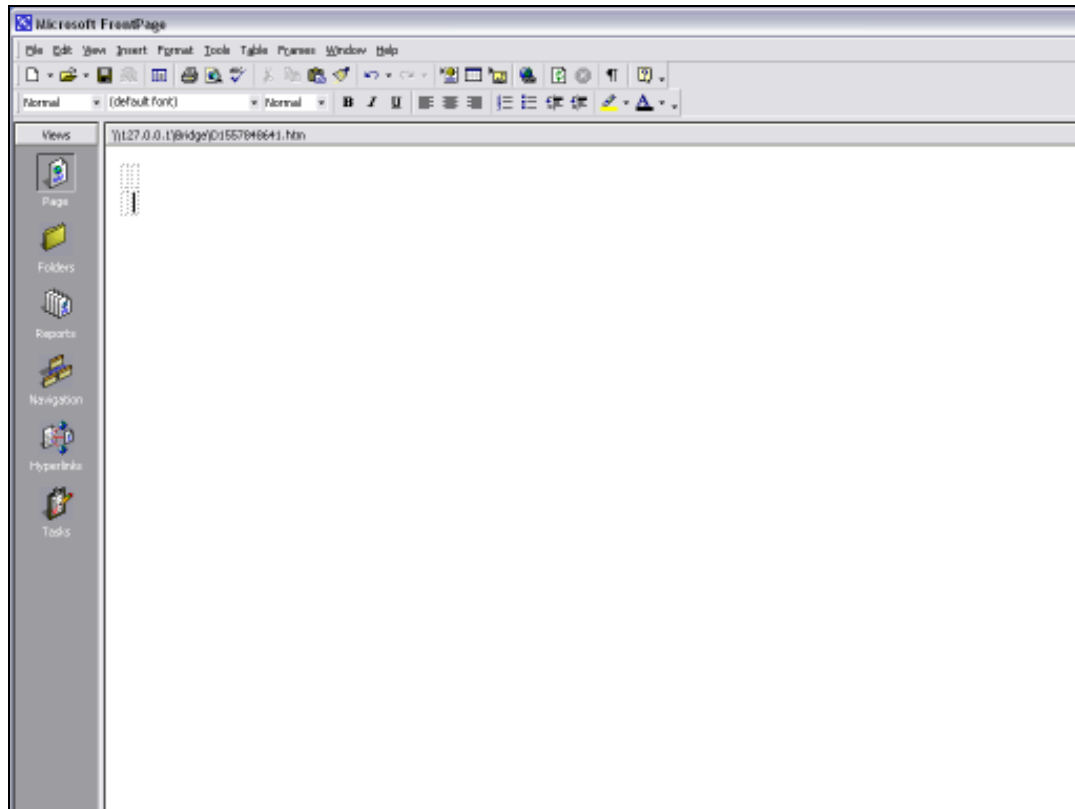
Slide 14

Slide notes:



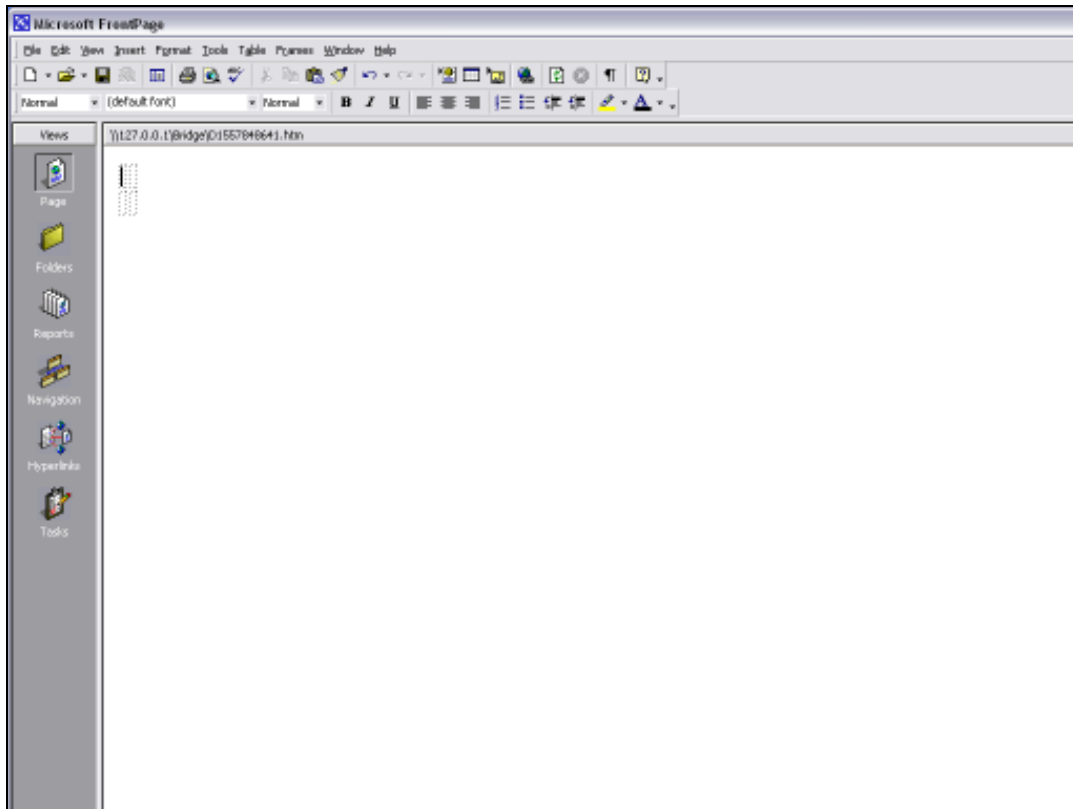
Slide 15

Slide notes:



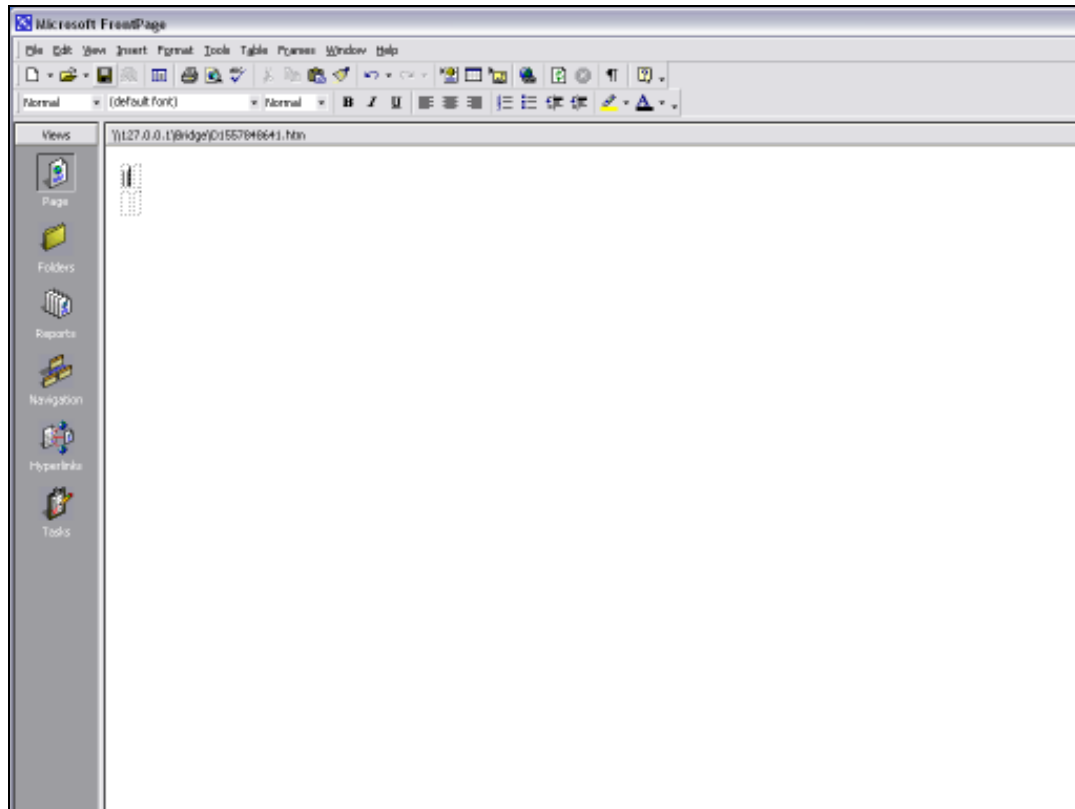
Slide 16

Slide notes:



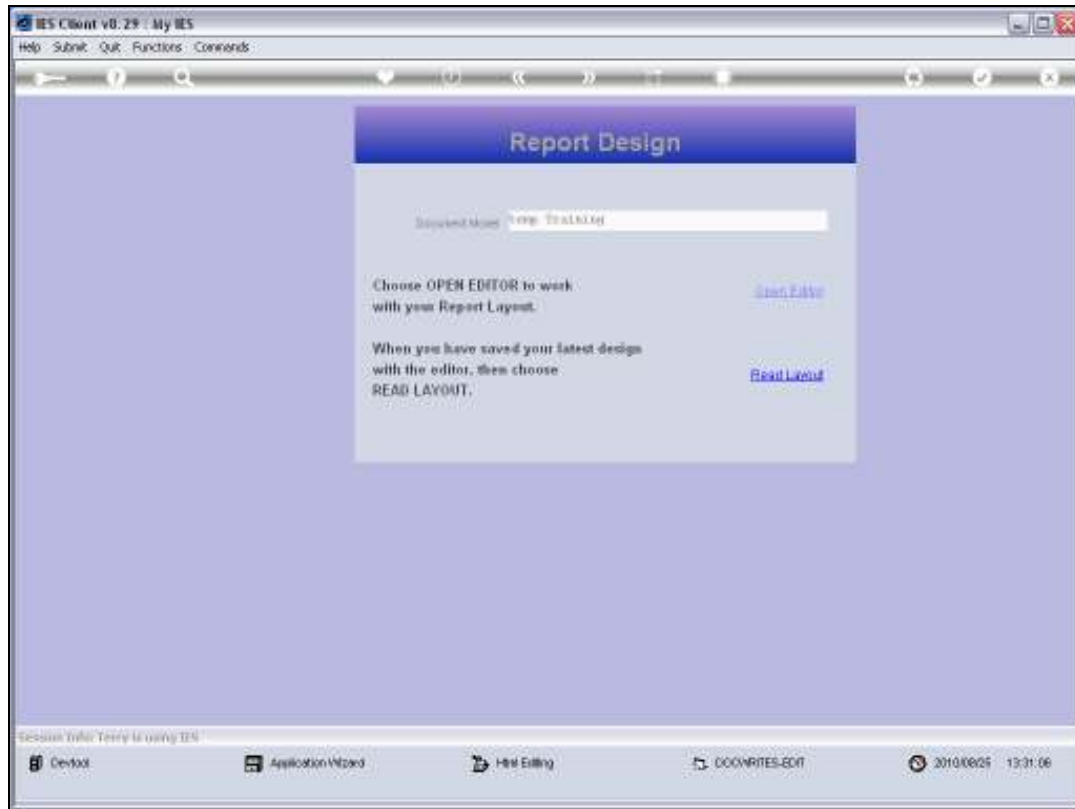
Slide 17

Slide notes: The Tag that we are inserting here can of course go anywhere in the layout, and because we are using an HTML Editor, and have not locked the size of the cell, we know that the size of the picture will automatically push the size of the cell in order to fit. However, when we are doing the layout with a spreadsheet, then we will have to merge enough cells to provide for the size of the image.



Slide 18

Slide notes:



Slide 19

Slide notes:



Slide 20

Slide notes:



Slide 21

Slide notes:



Slide 22

Slide notes:



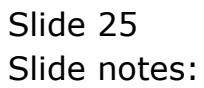
Slide 23

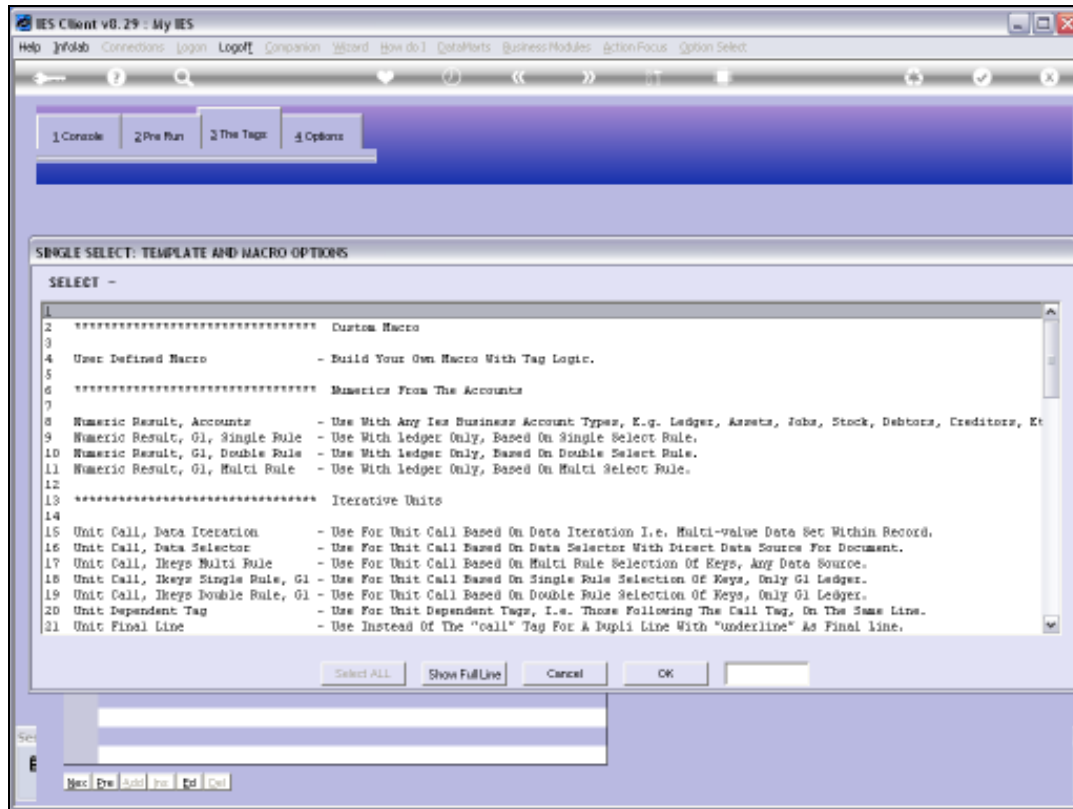
Slide notes:



Slide 24

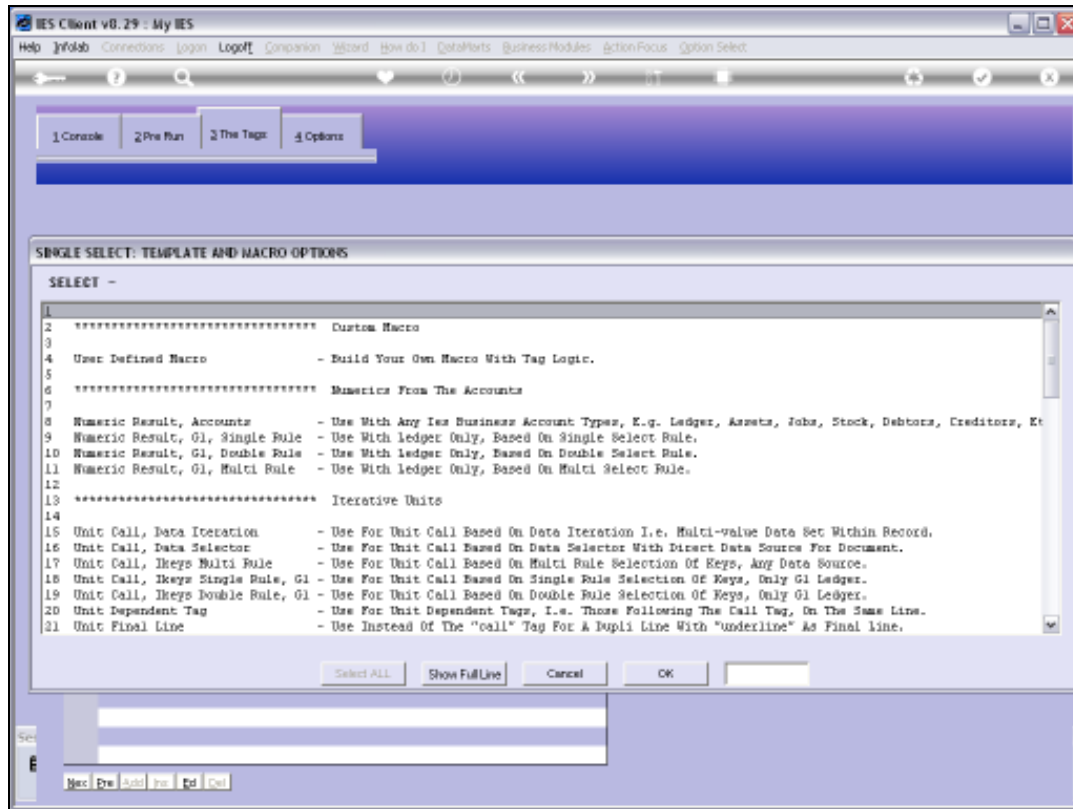
Slide notes:





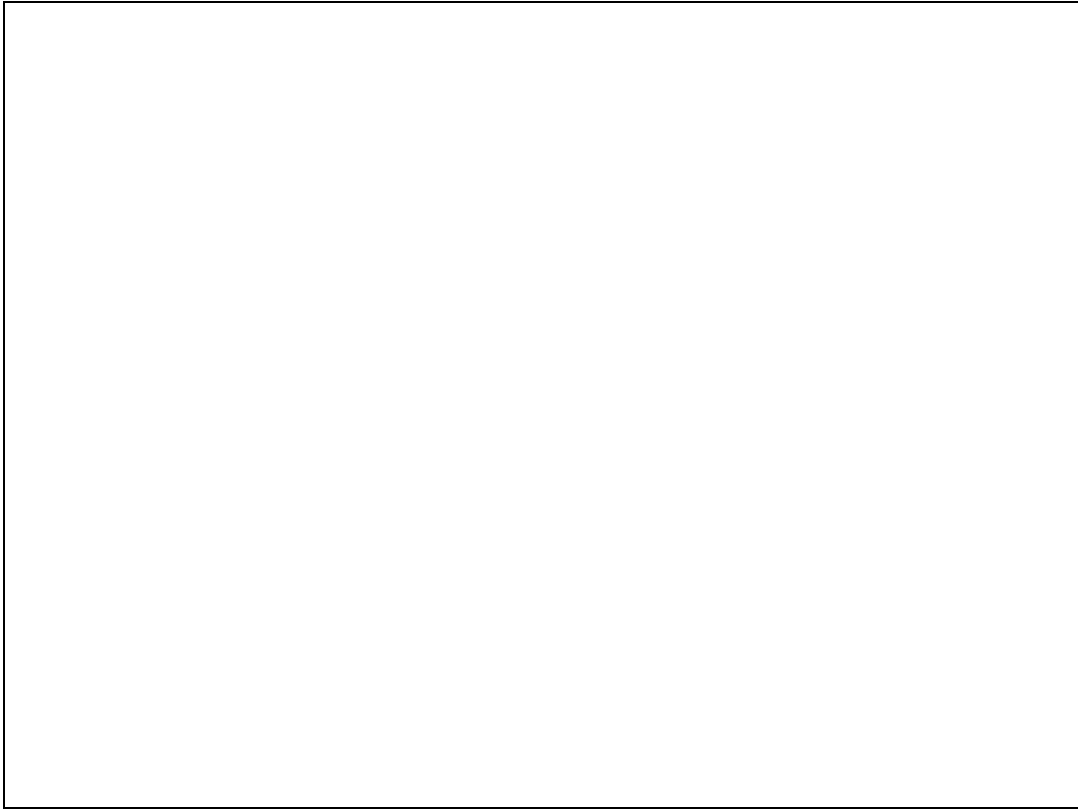
Slide 26

Slide notes:



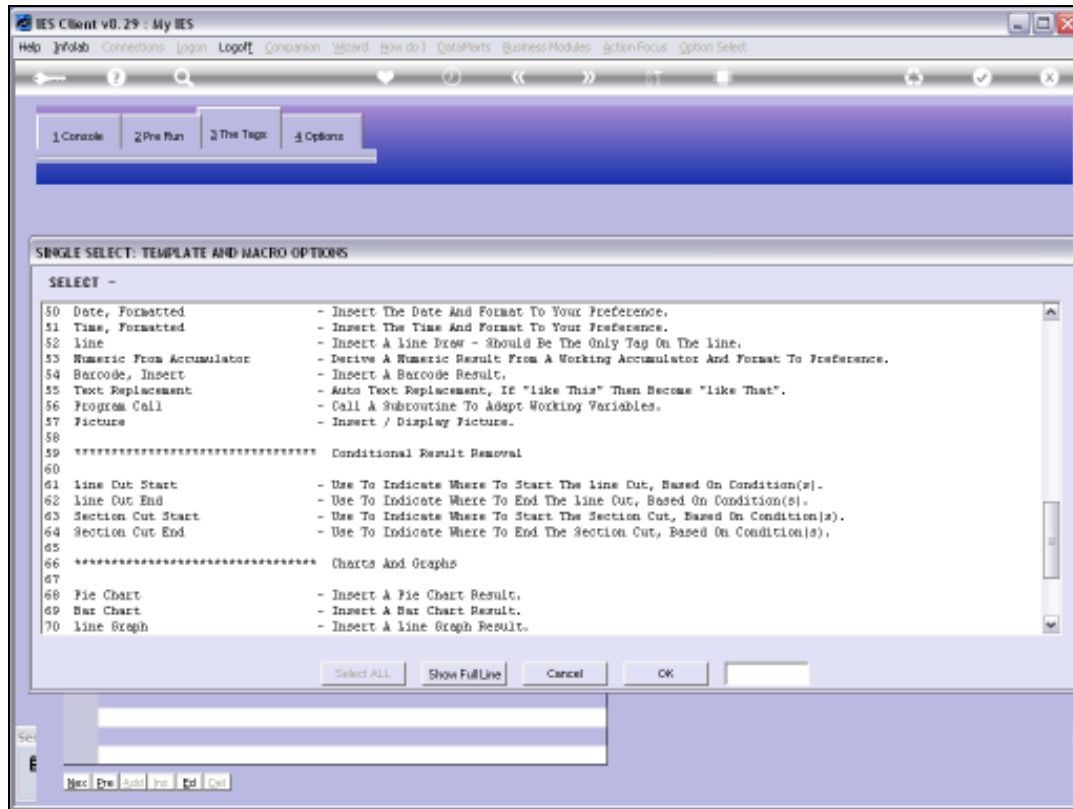
Slide 27

Slide notes:



Slide 28

Slide notes:



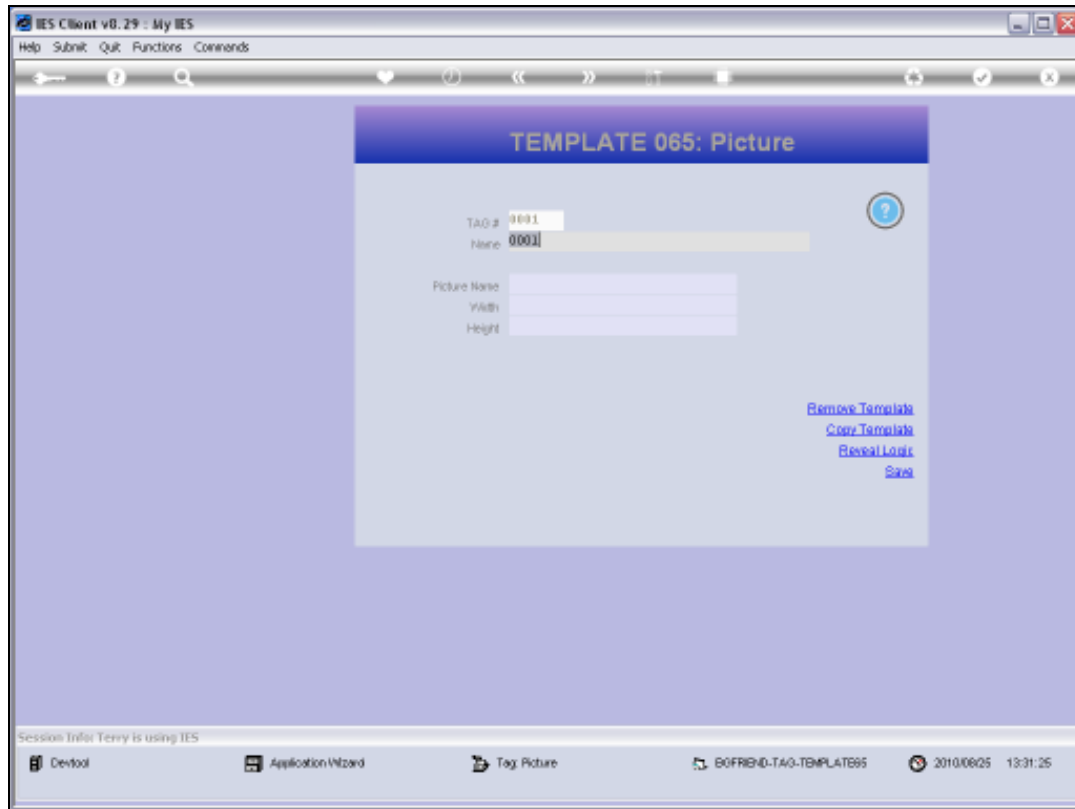
Slide 29

Slide notes:



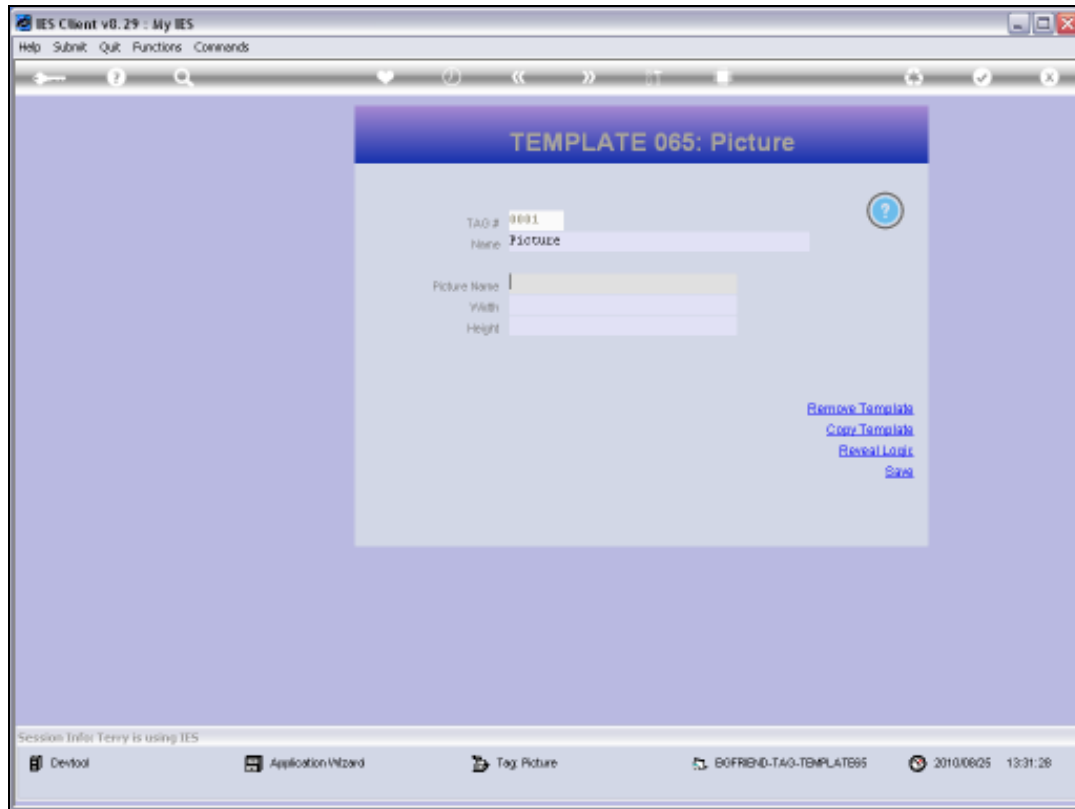
Slide 30

Slide notes:



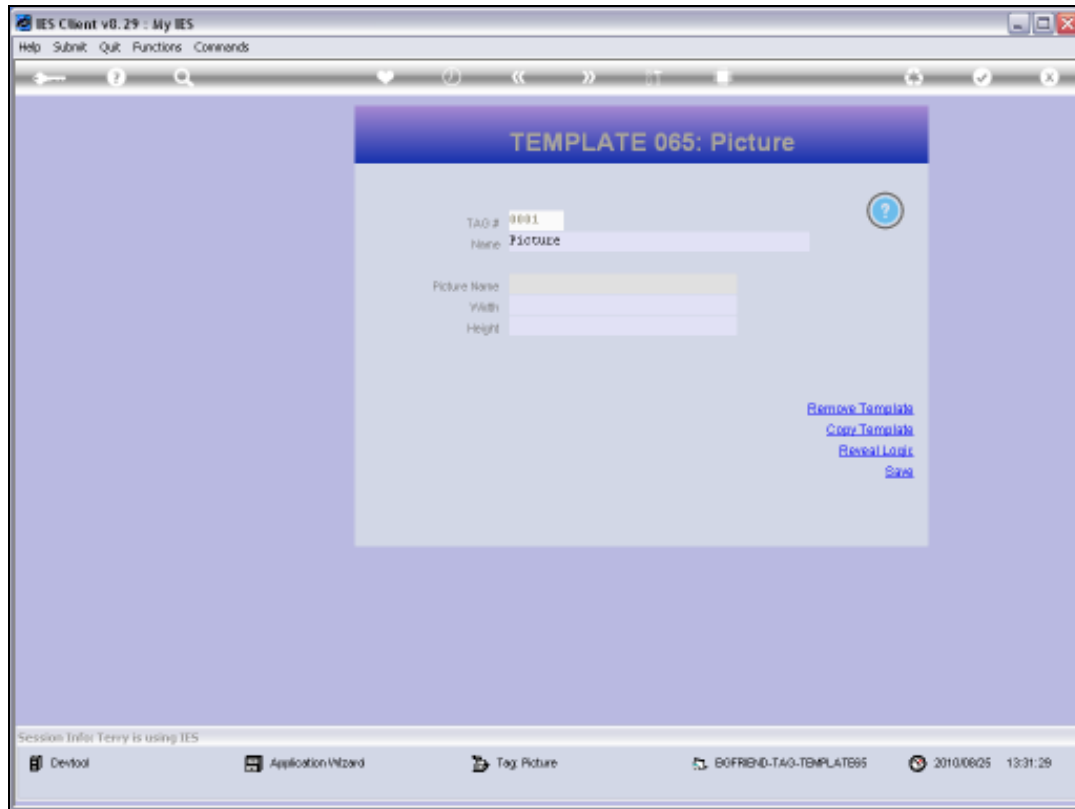
Slide 31

Slide notes:



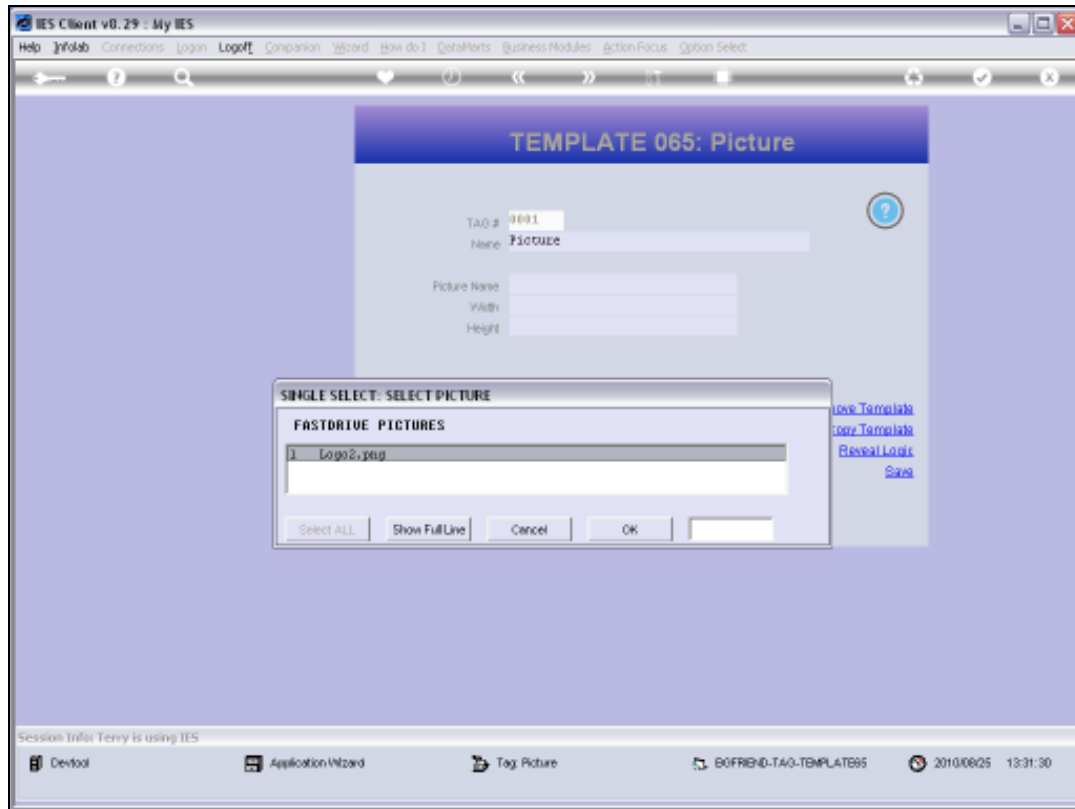
Slide 32

Slide notes:



Slide 33

Slide notes:



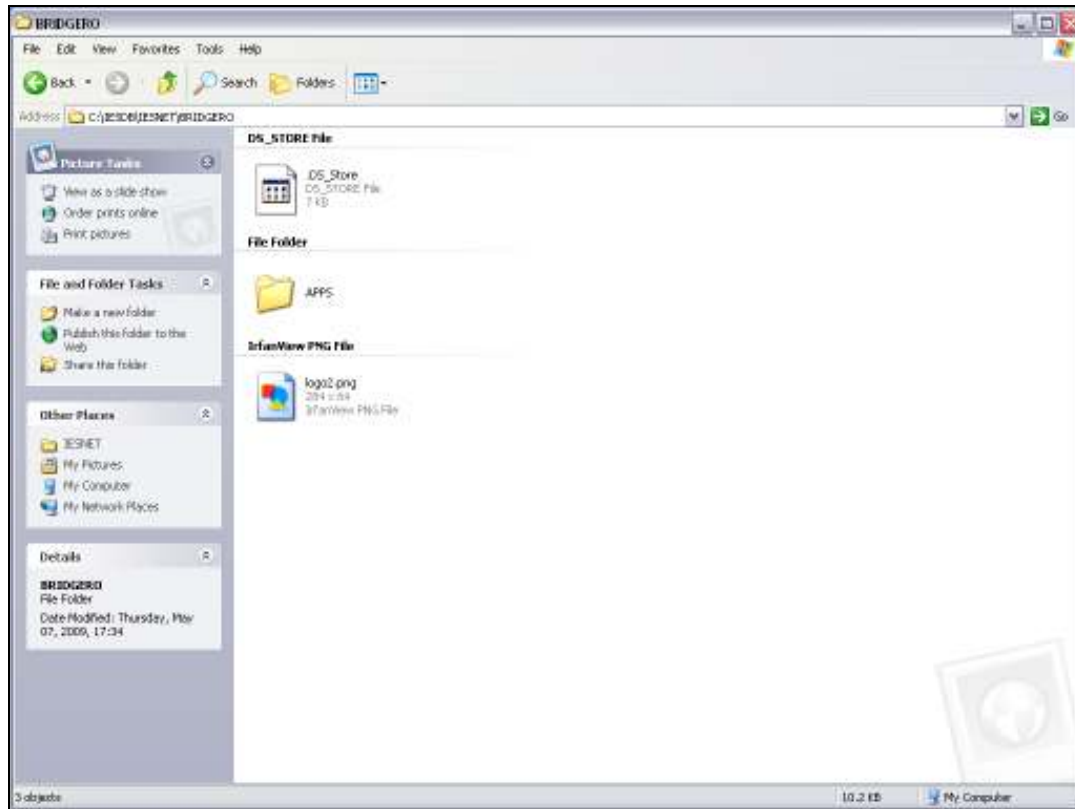
Slide 34

Slide notes: We have only 1 option here, and that is because we have not uploaded any other pictures onto the Image Folder. We shall now go and have a look at the Image Folder.



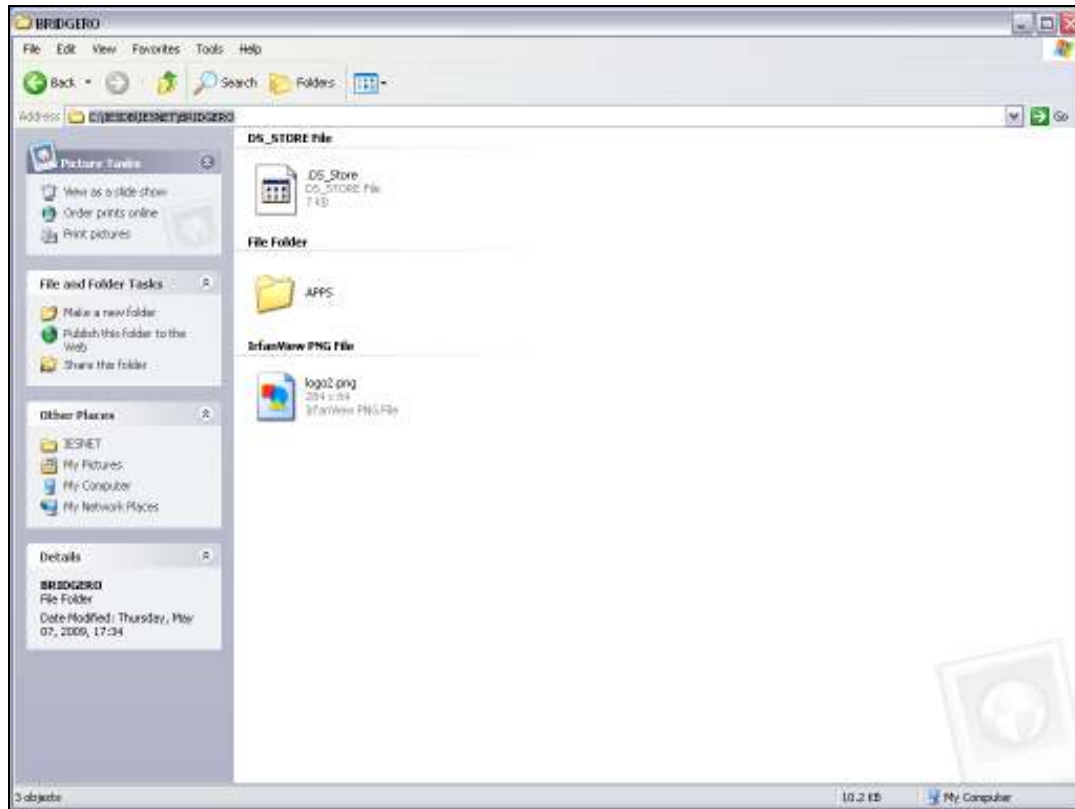
Slide 35

Slide notes:



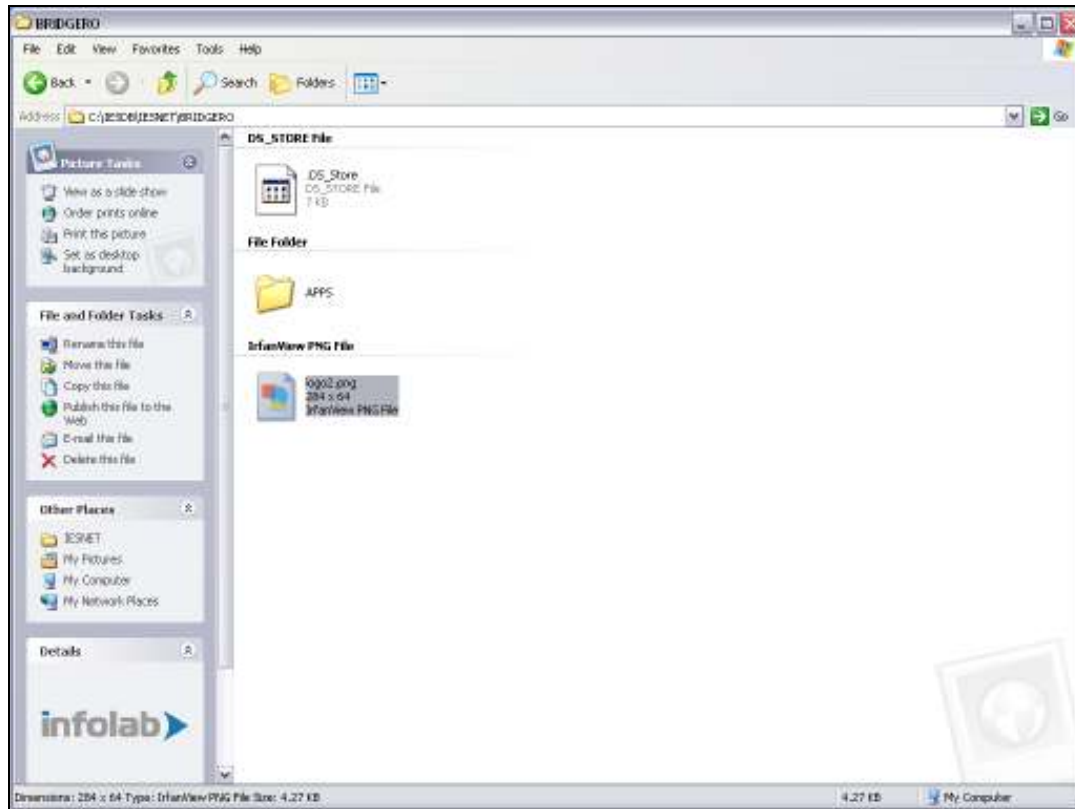
Slide 36

Slide notes: The system will only offer pictures from the BRIDGERO folder, so this is where we place the images that we want to use. We can also get the picture dimensions here, in case the system is unable to fill it in for us.



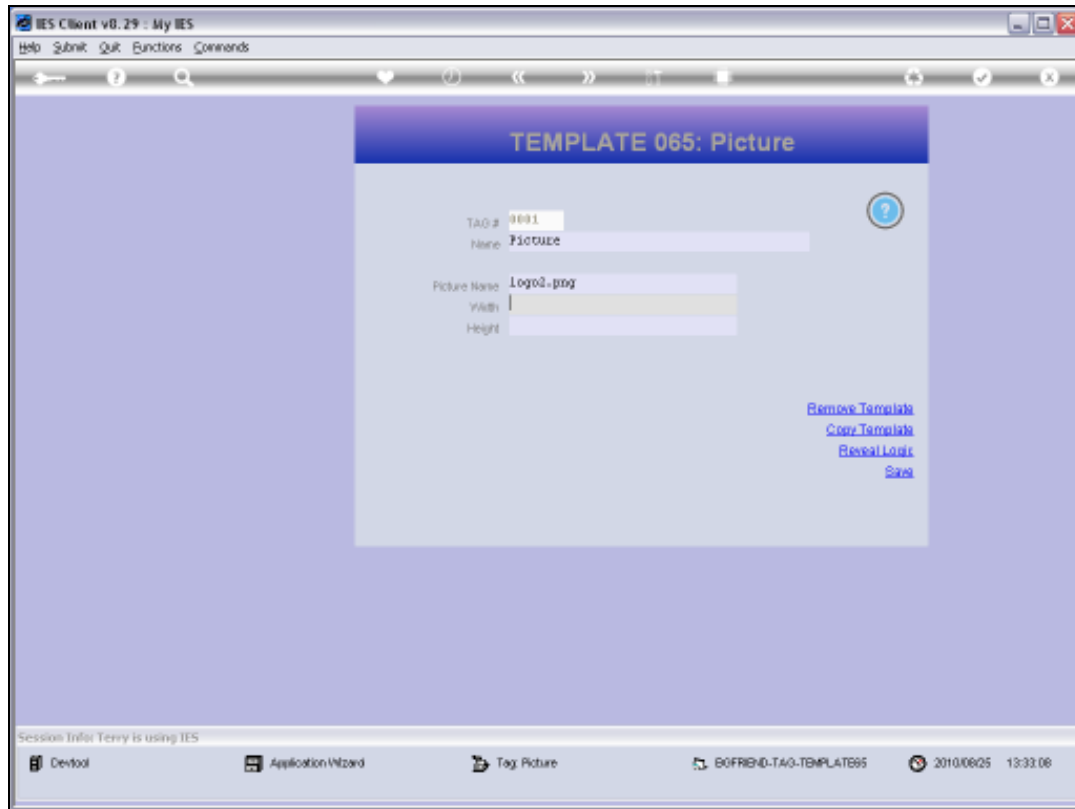
Slide 37

Slide notes:



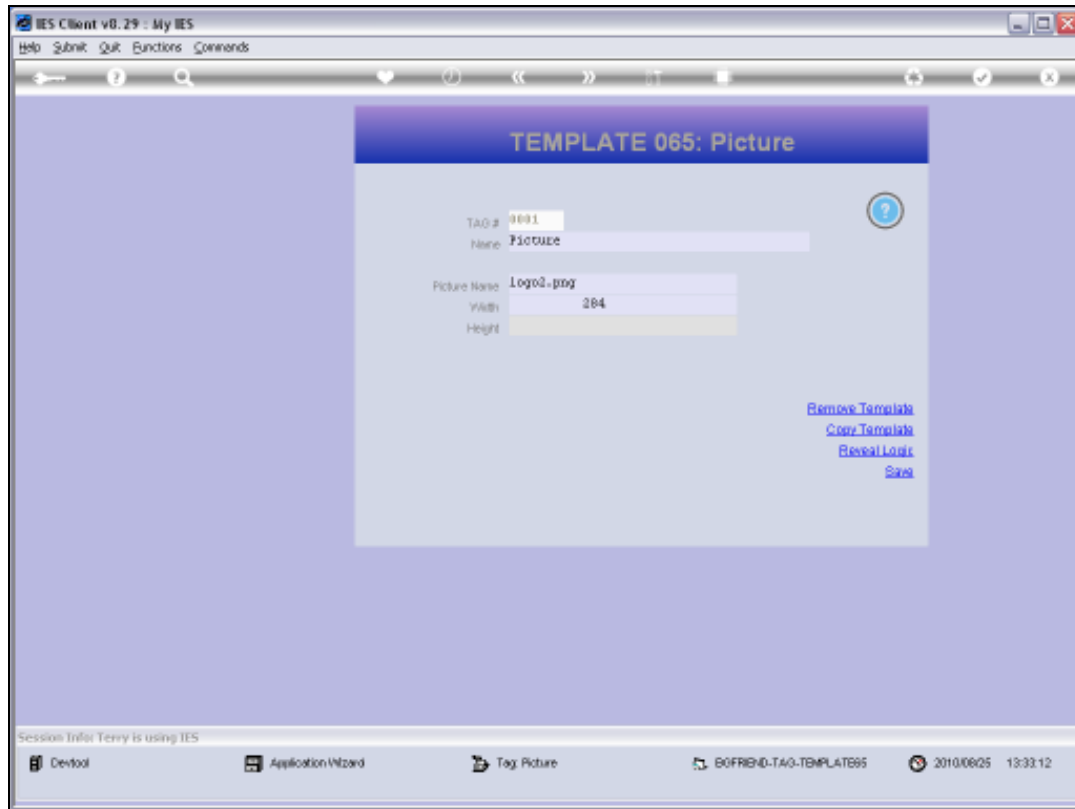
Slide 38

Slide notes:



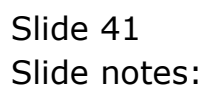
Slide 39

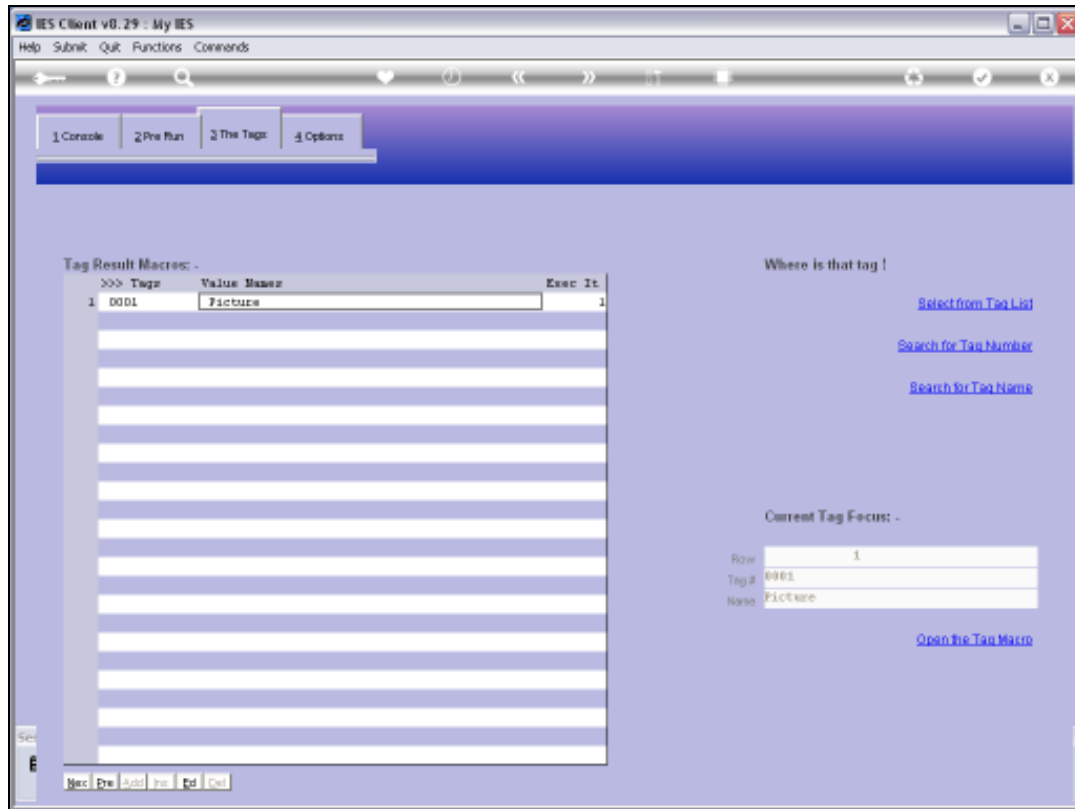
Slide notes:



Slide 40

Slide notes:





Slide 42

Slide notes:



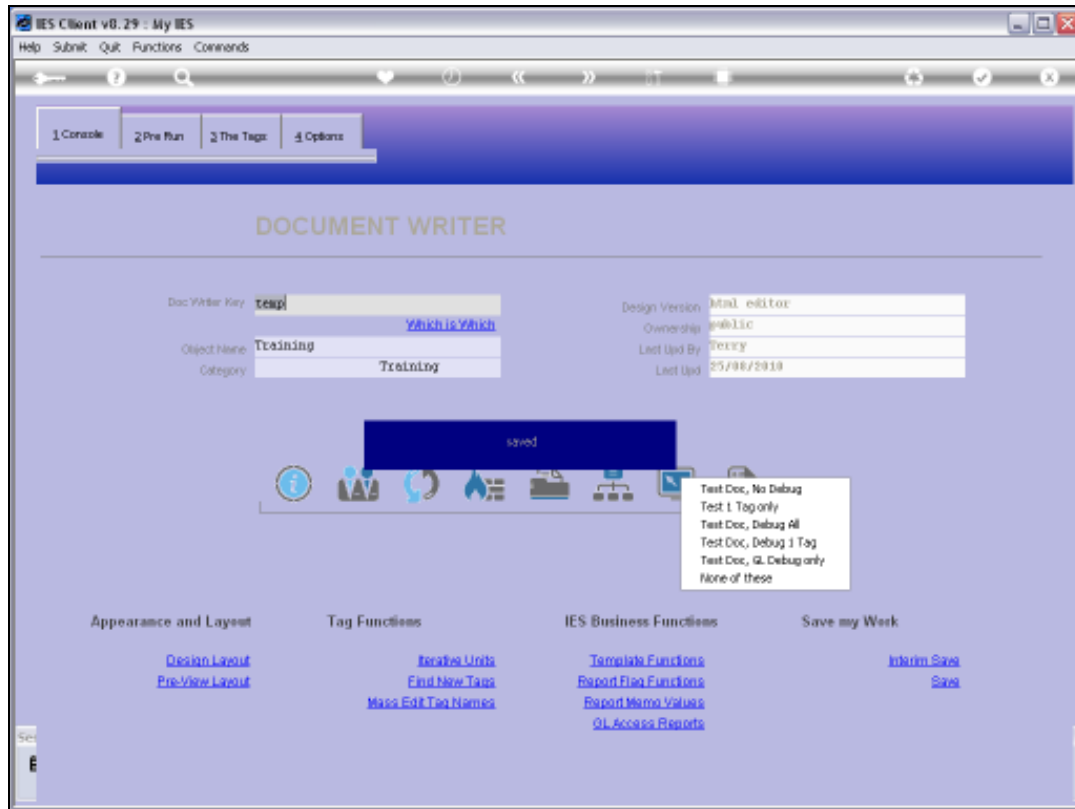
Slide 43

Slide notes:



Slide 44

Slide notes:



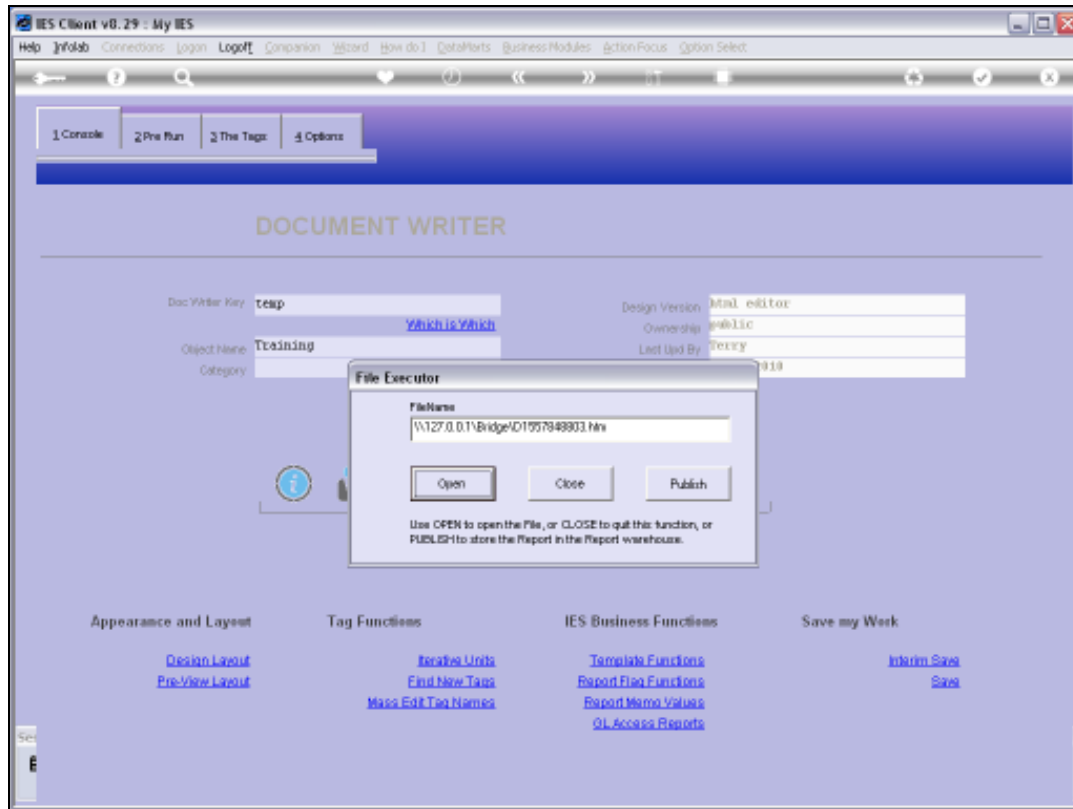
Slide 45

Slide notes:



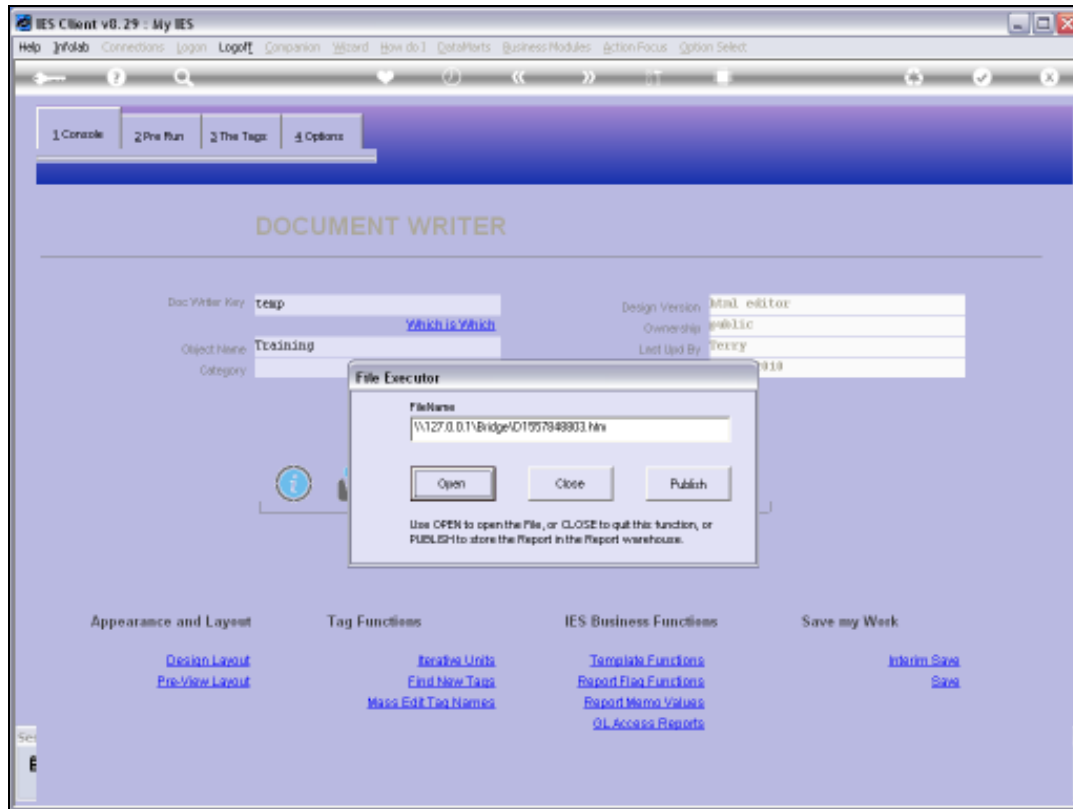
Slide 46

Slide notes:



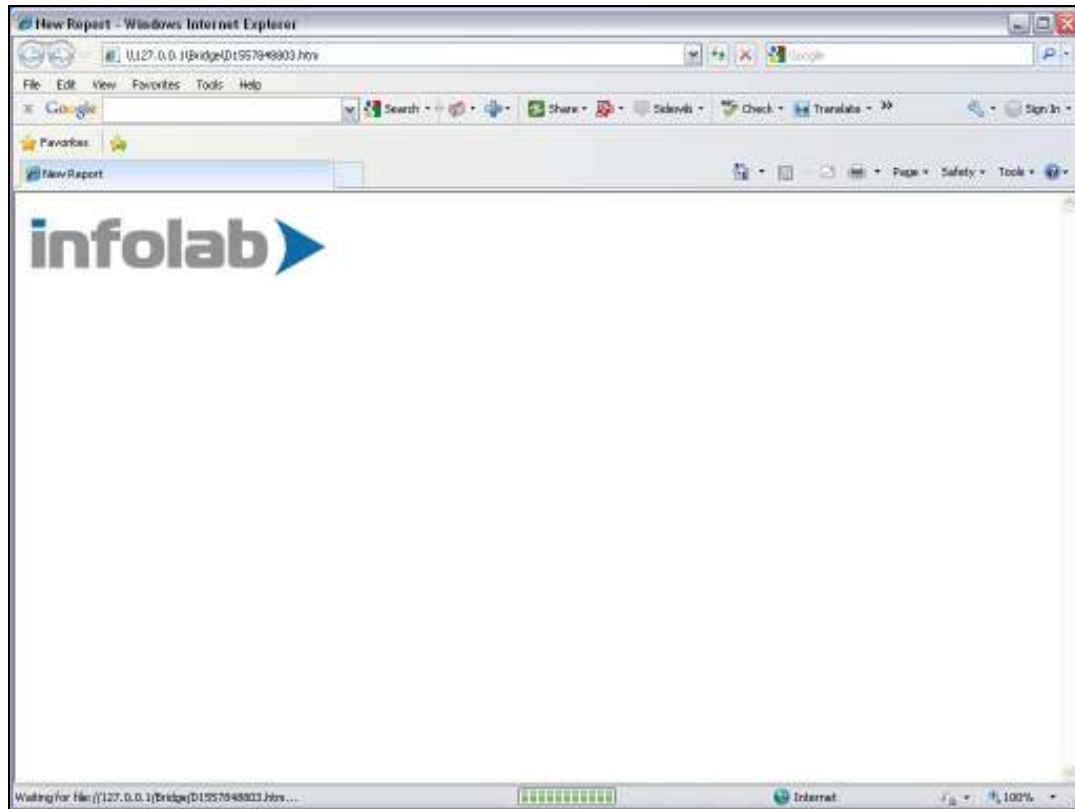
Slide 47

Slide notes:



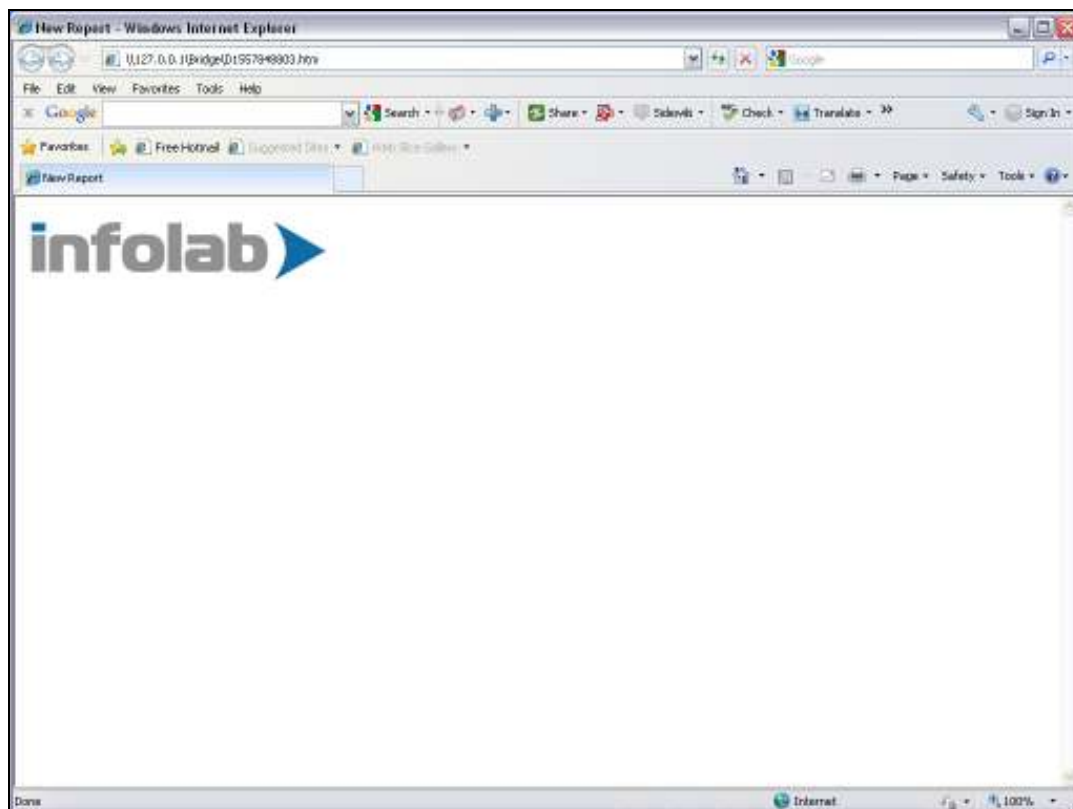
Slide 48

Slide notes:



Slide 49

Slide notes: So our picture is showing perfectly.



Slide 50

Slide notes: