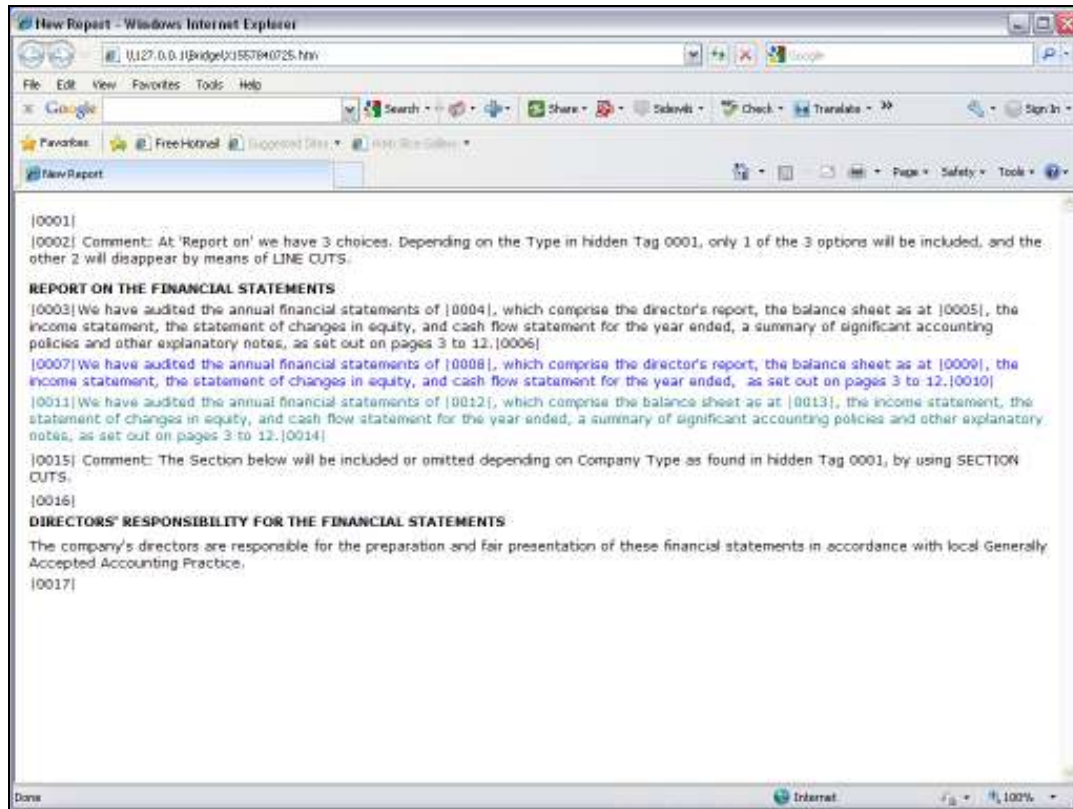


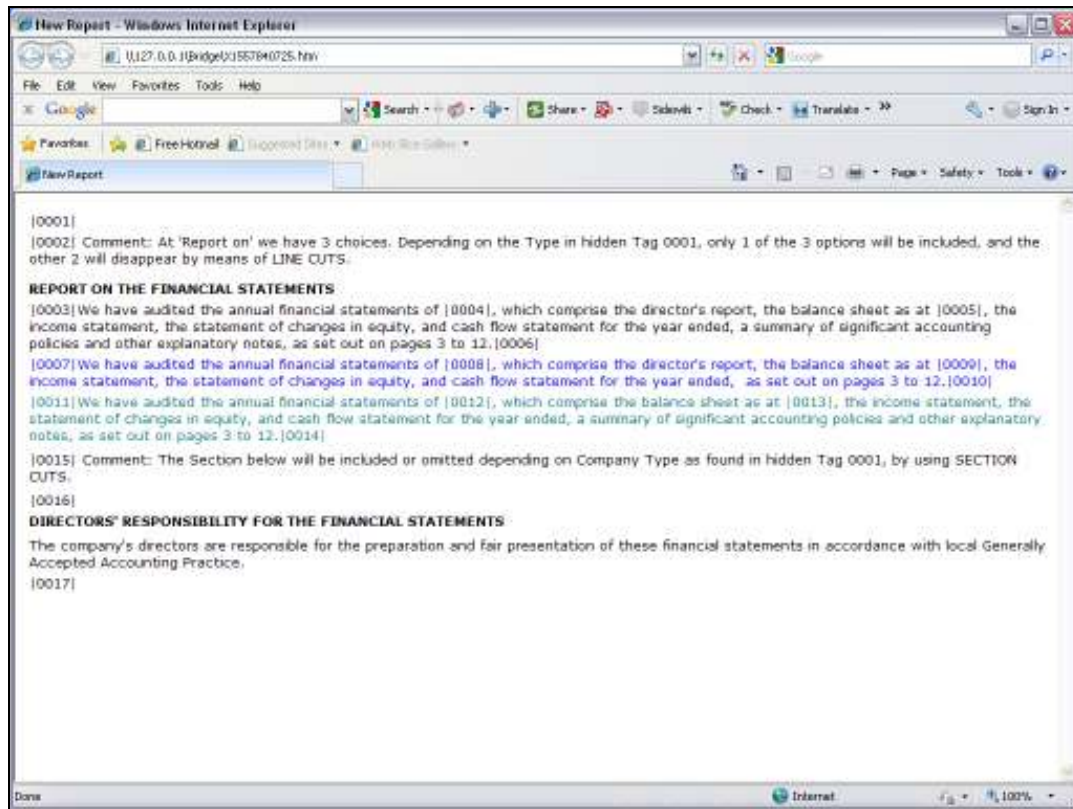
Slide 1

Slide notes: In our Report, we can have Lines and Paragraphs that are conditional, and that can be suppressed. We refer to this as a process of Line and Section Cuts. In this layout, we have a Comment that says that of the 3 Lines below 'Report On', only 1 will ever show when the Report is produced and this is managed with Line Cuts.



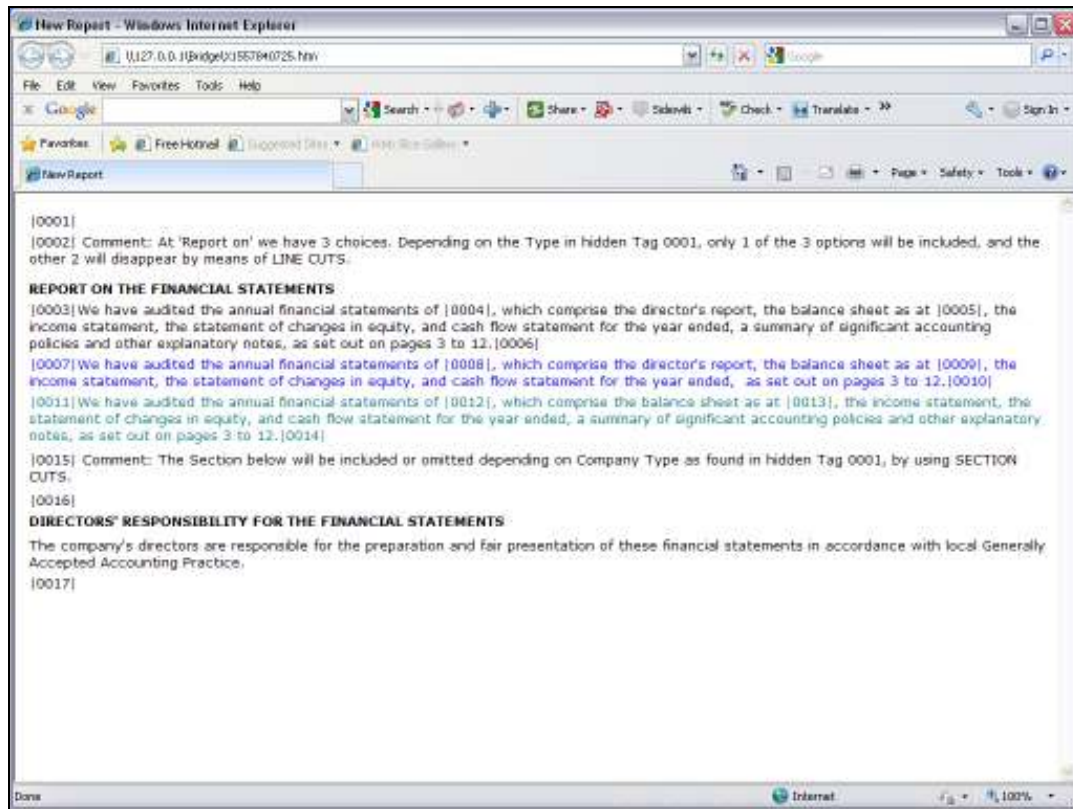
Slide 2

Slide notes: This Line will only show when the Company Type is 10.



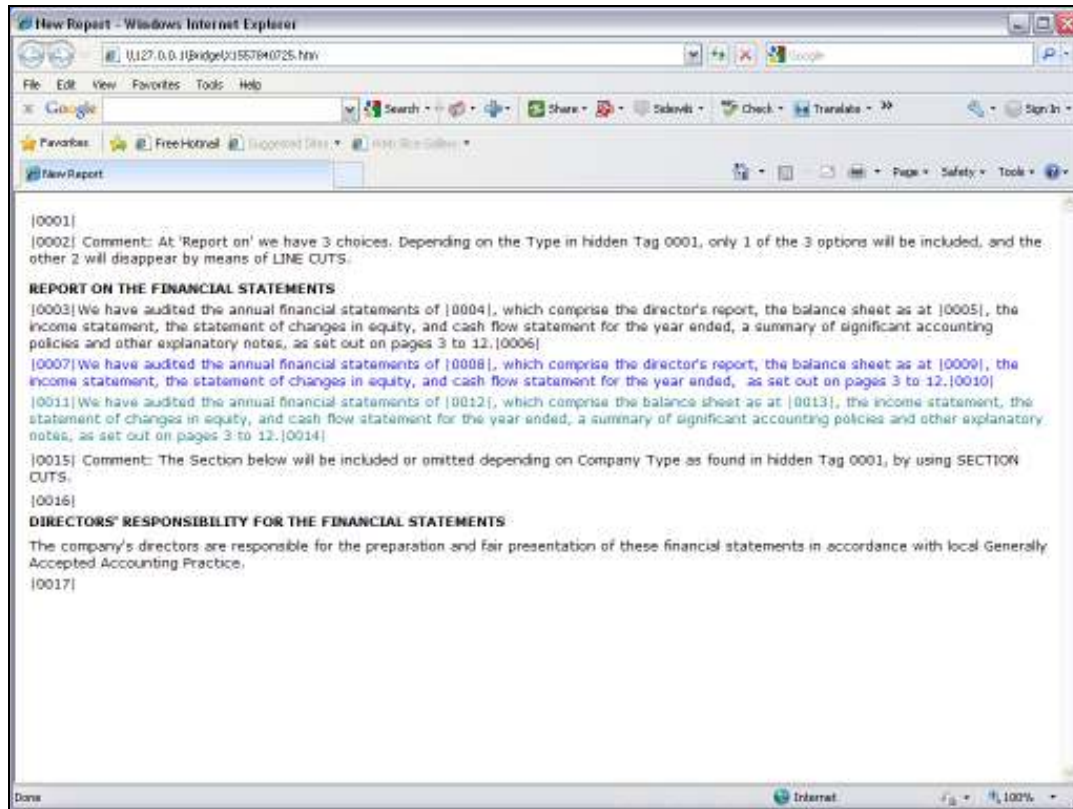
Slide 3

Slide notes: This Line will only show when the Company Type is 12.



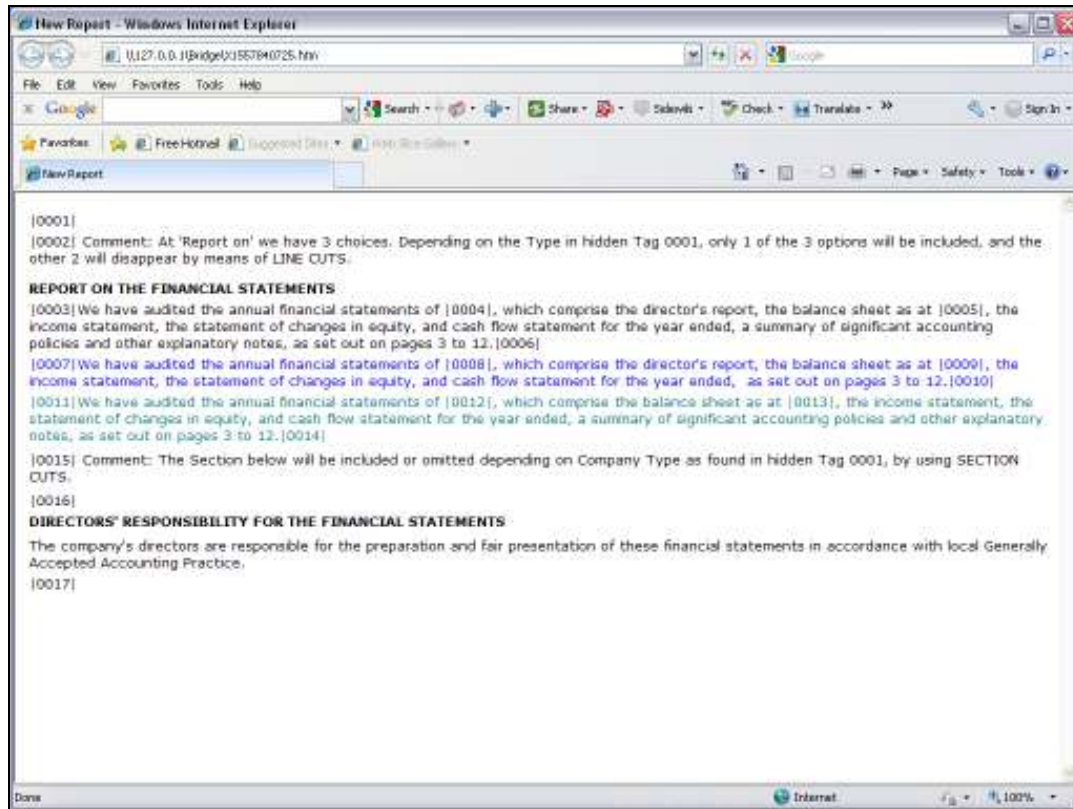
Slide 4

Slide notes: This Line will only show when the Company Type is 14.



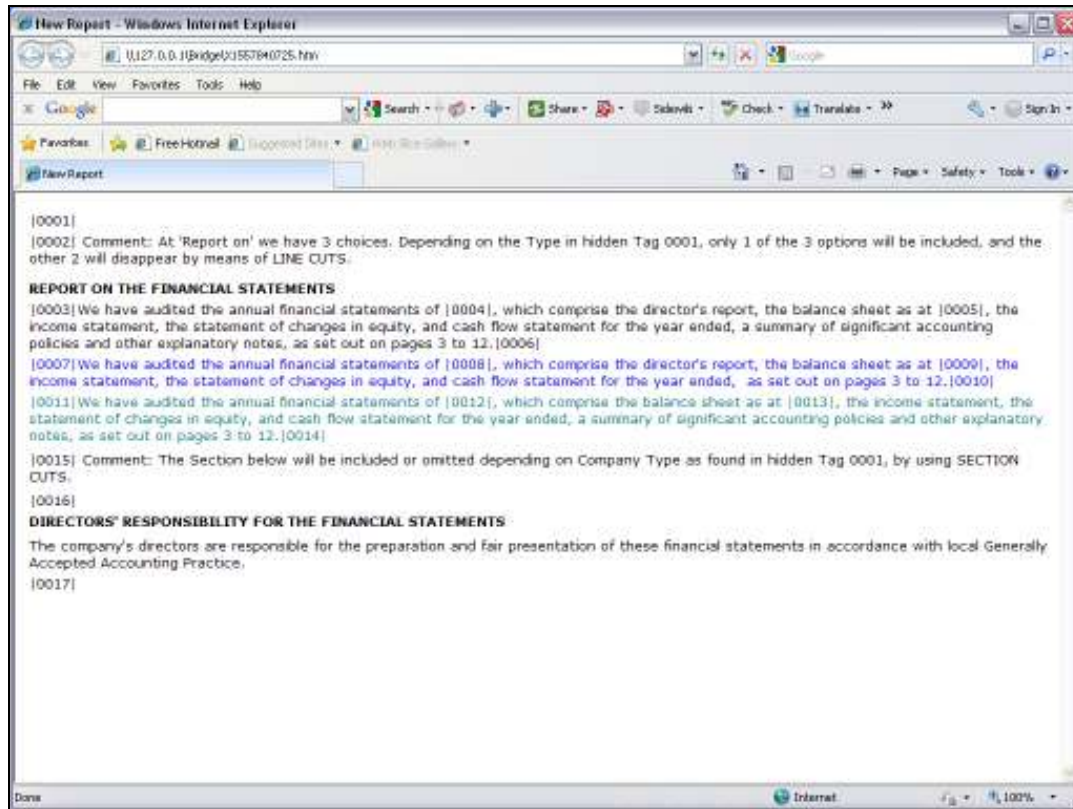
Slide 5

Slide notes: The Company Type, in this example, is found in Tag 1, and it happens to be a hidden tag that does not show on the final Report.



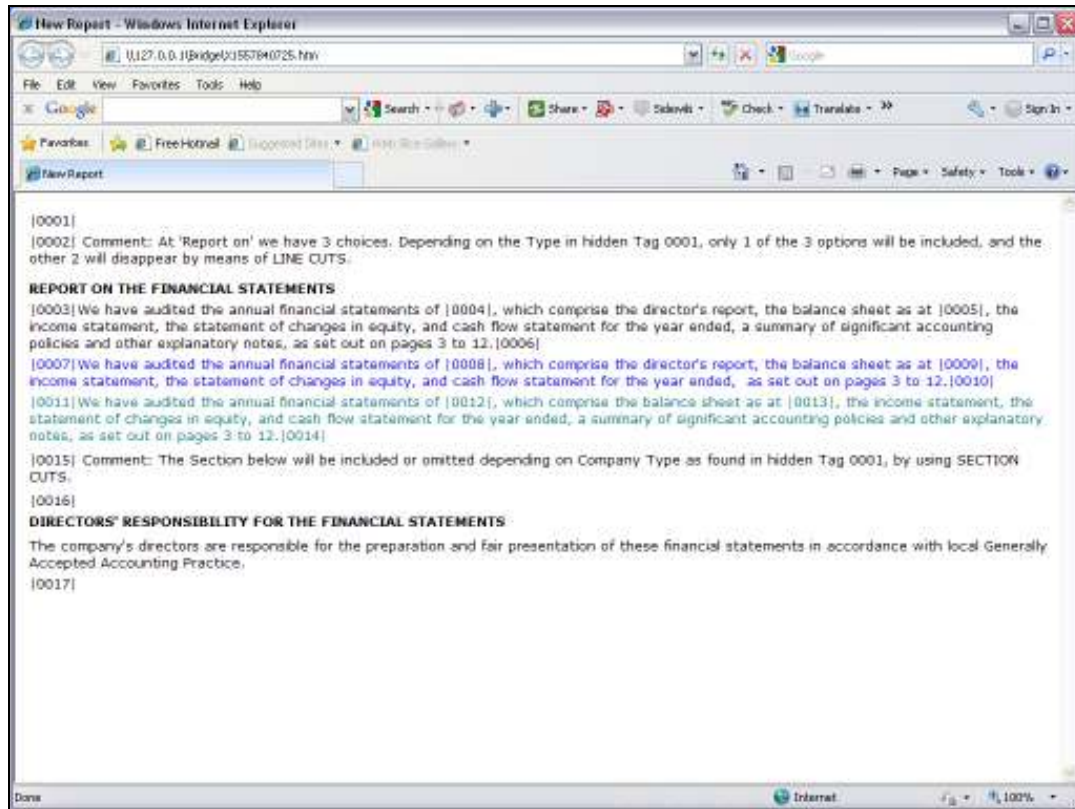
Slide 6

Slide notes: Line Cuts always work with 2 Tags, 1 of which is at the beginning of the Text that may be cut, while the other is at the end of the Text that may be cut. We note that Line Cuts can be used in the middle of Lines also, and not only with full Lines as in this example.



Slide 7

Slide notes:



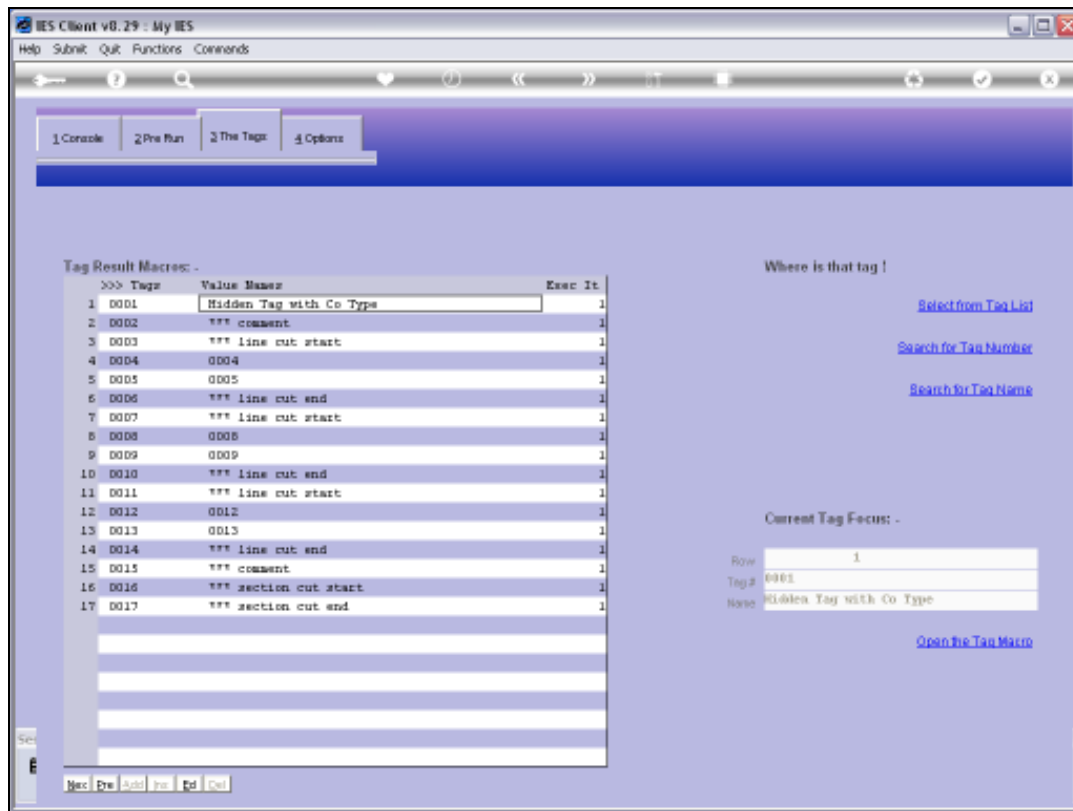
Slide 8

Slide notes:



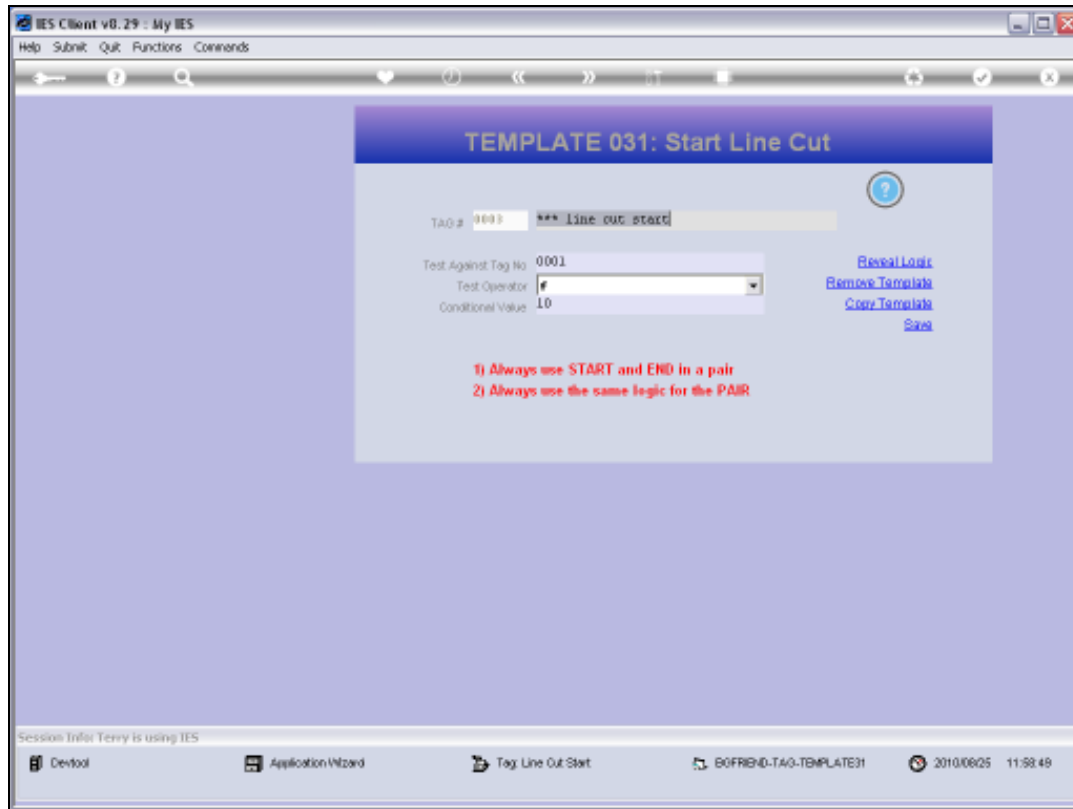
Slide 9

Slide notes:



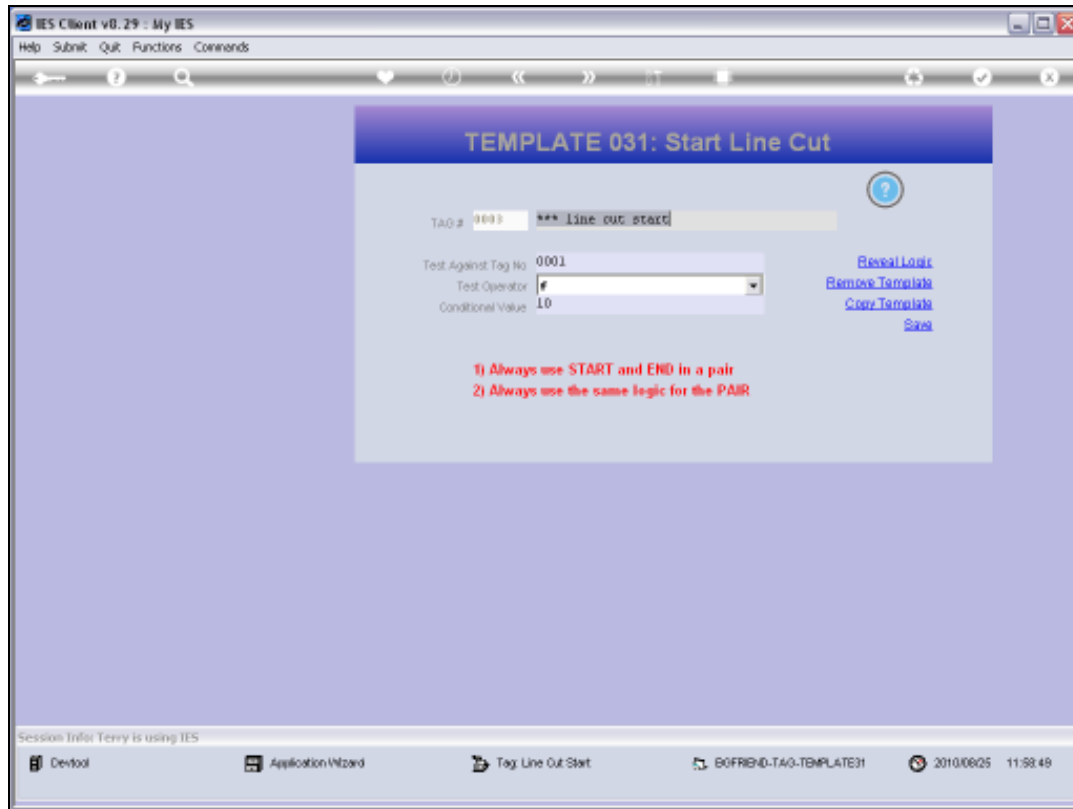
Slide 10

Slide notes:



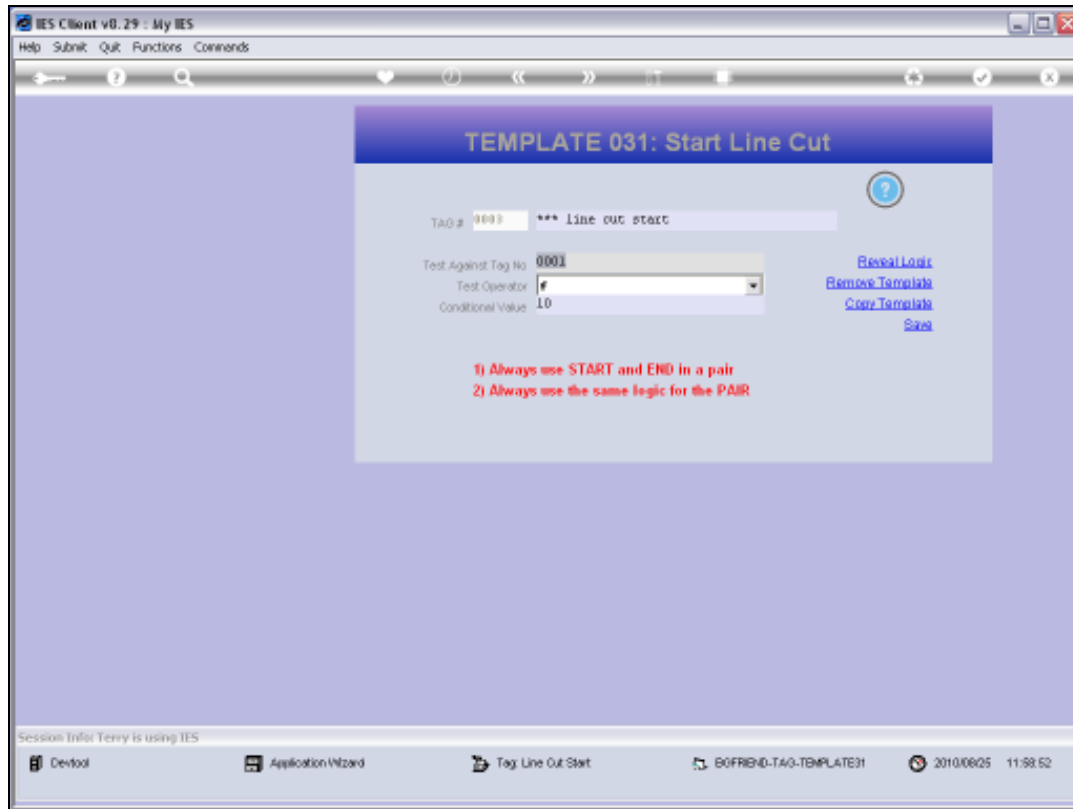
Slide 11

Slide notes: A Line Cut, whether the Start or End Tag, will always test a Value in some other Tag.



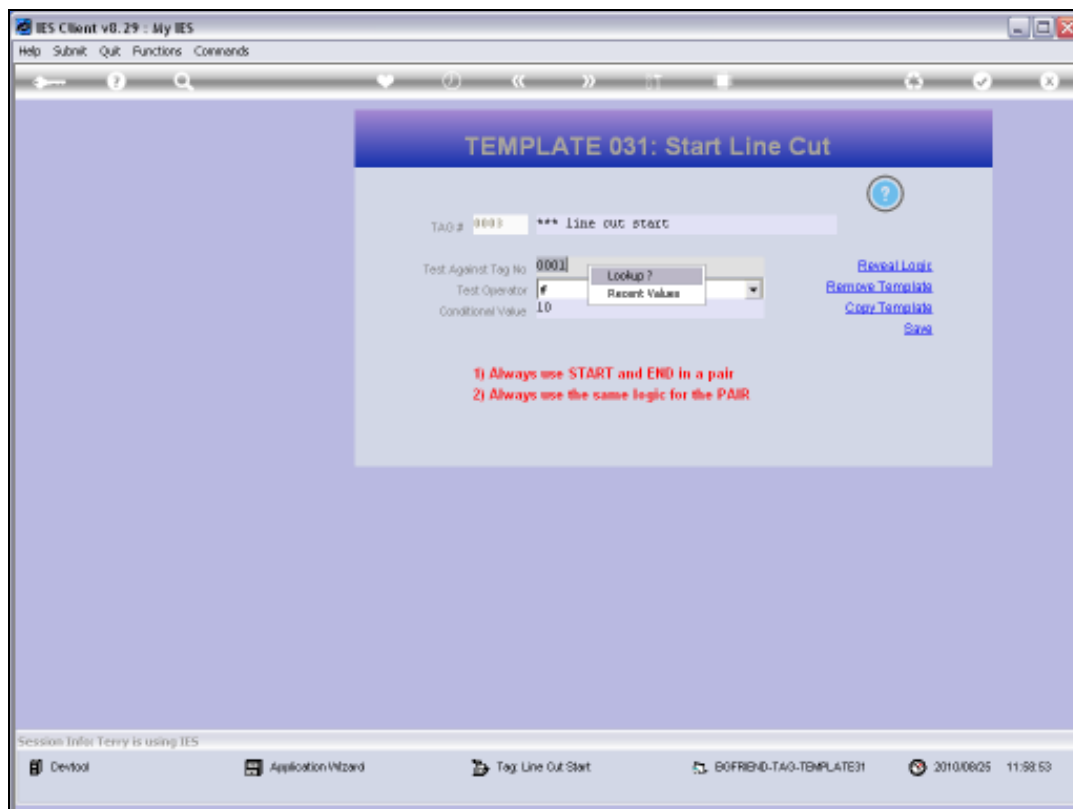
Slide 12

Slide notes:



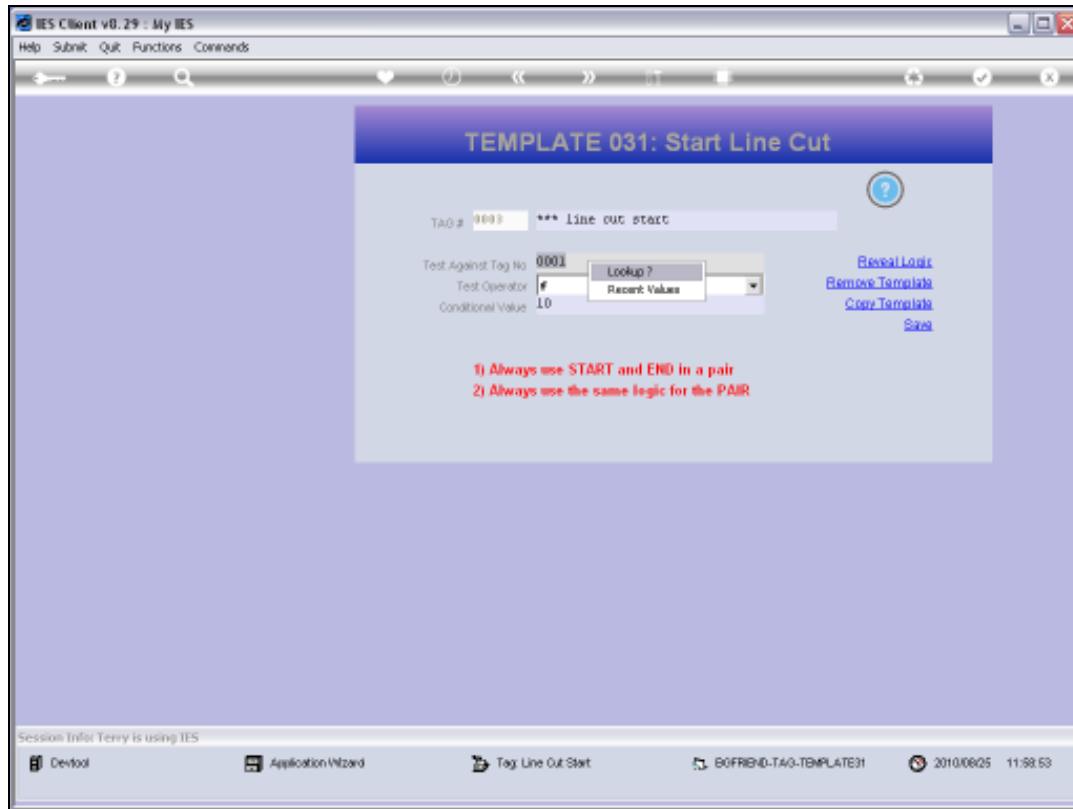
Slide 13

Slide notes:



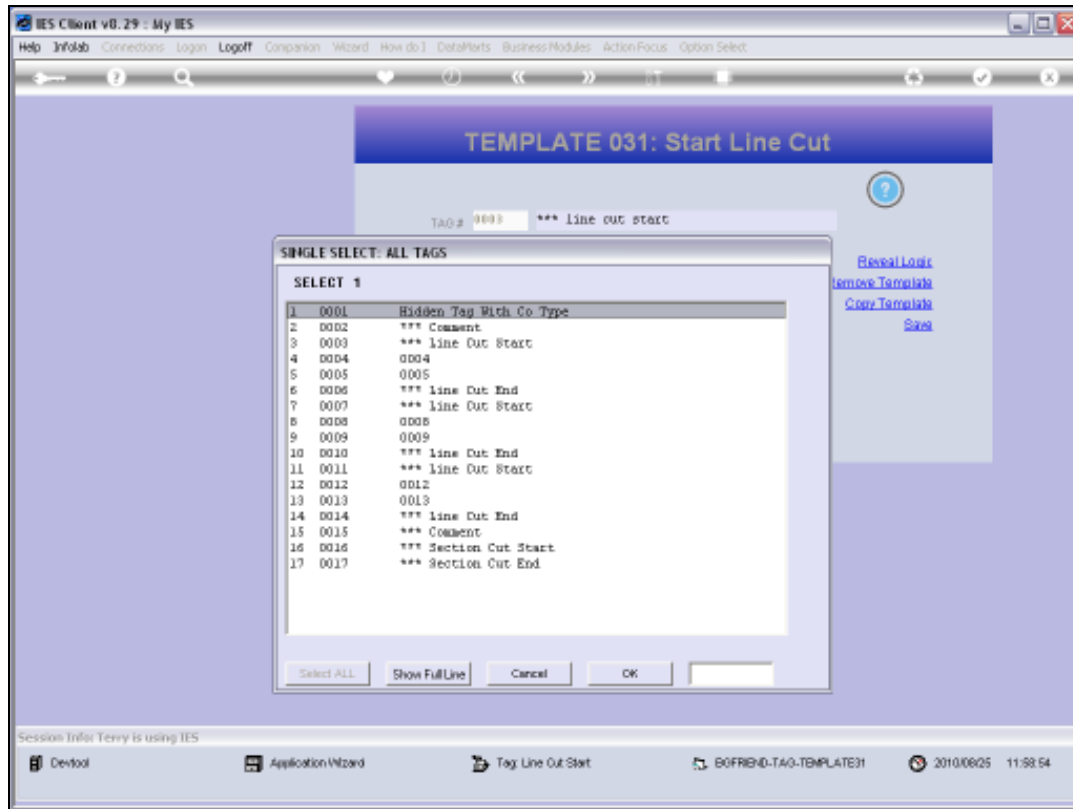
Slide 14

Slide notes:



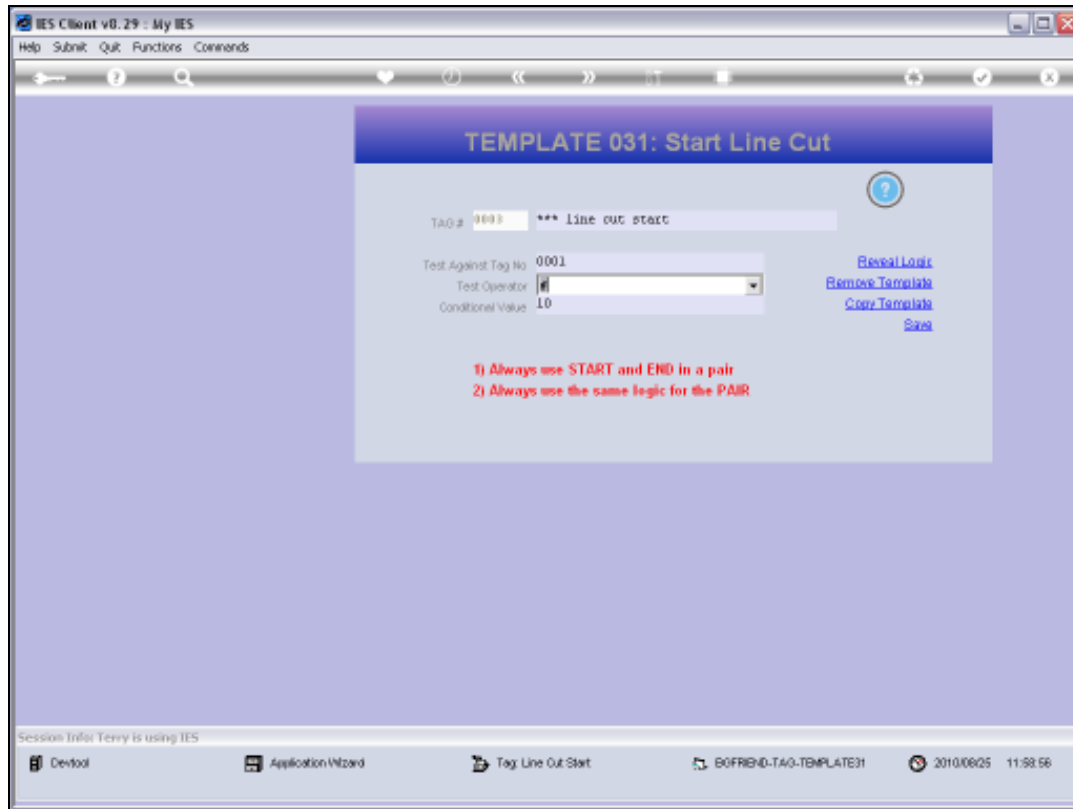
Slide 15

Slide notes:



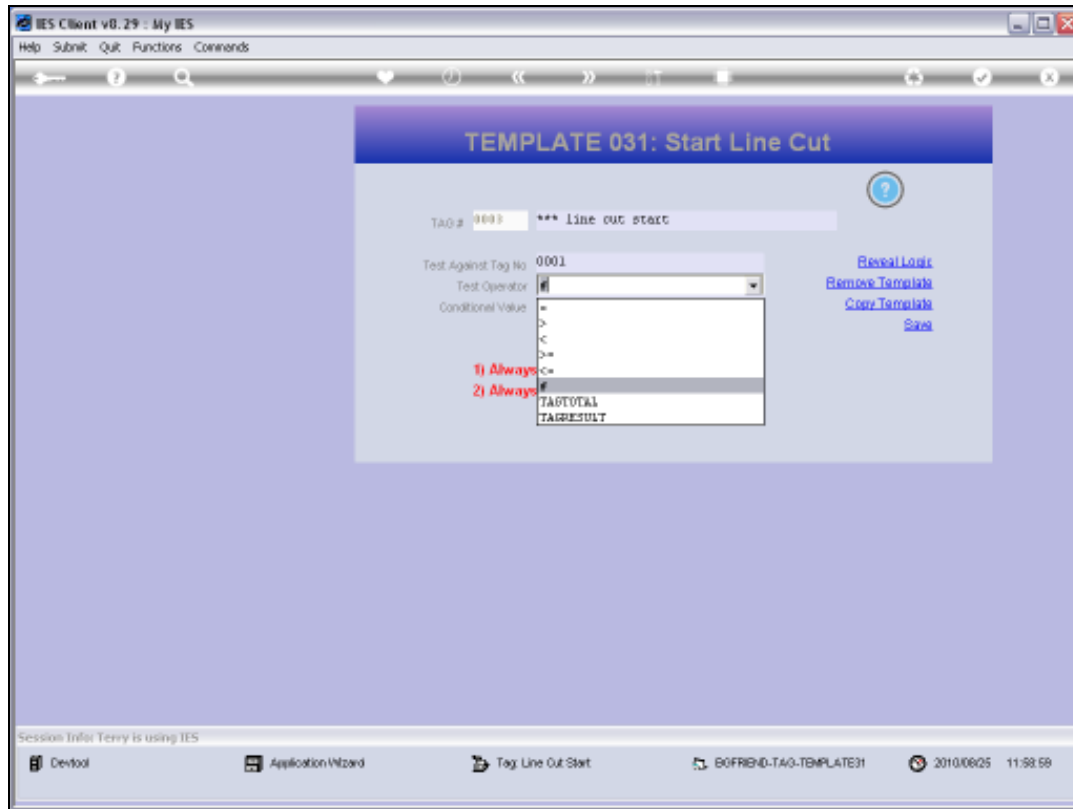
Slide 16

Slide notes:



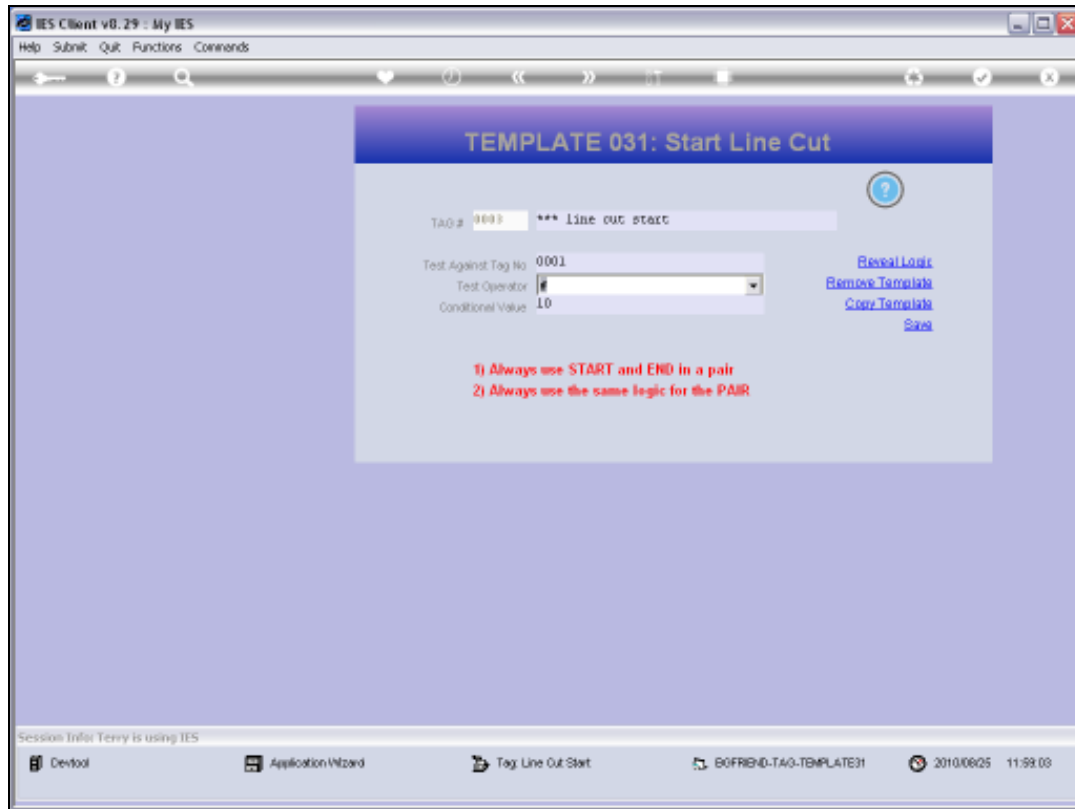
Slide 17

Slide notes:



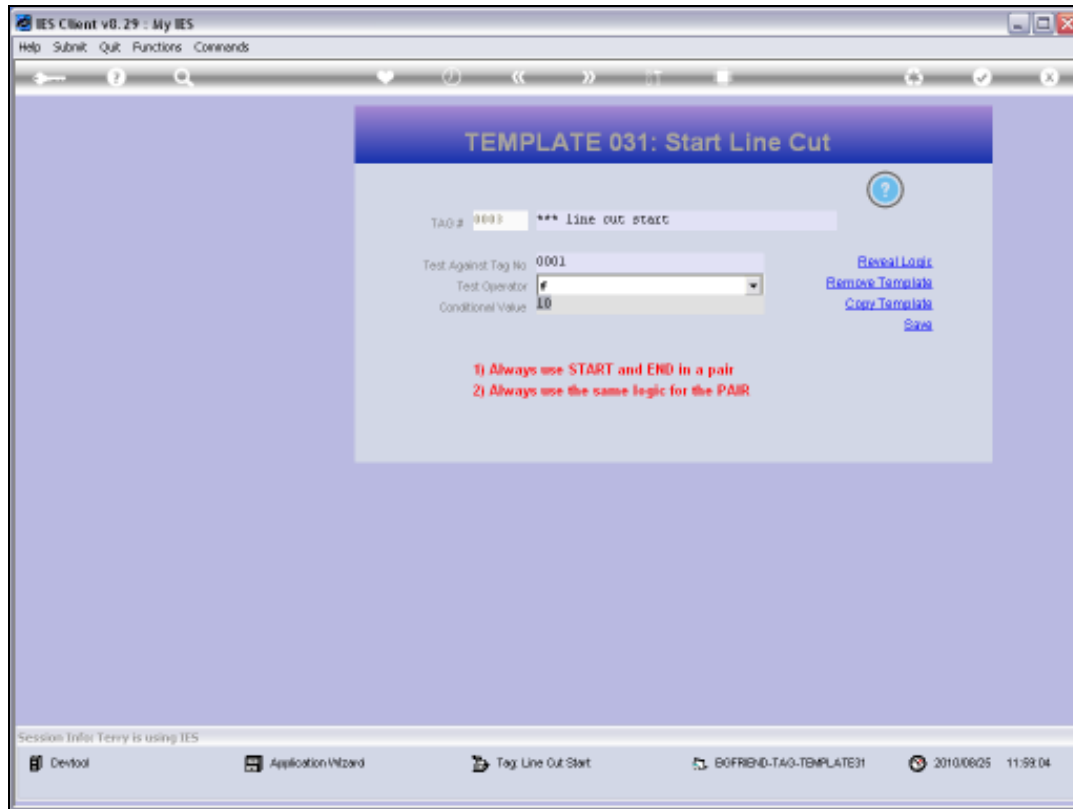
Slide 18

Slide notes: We can choose the Operator to apply.



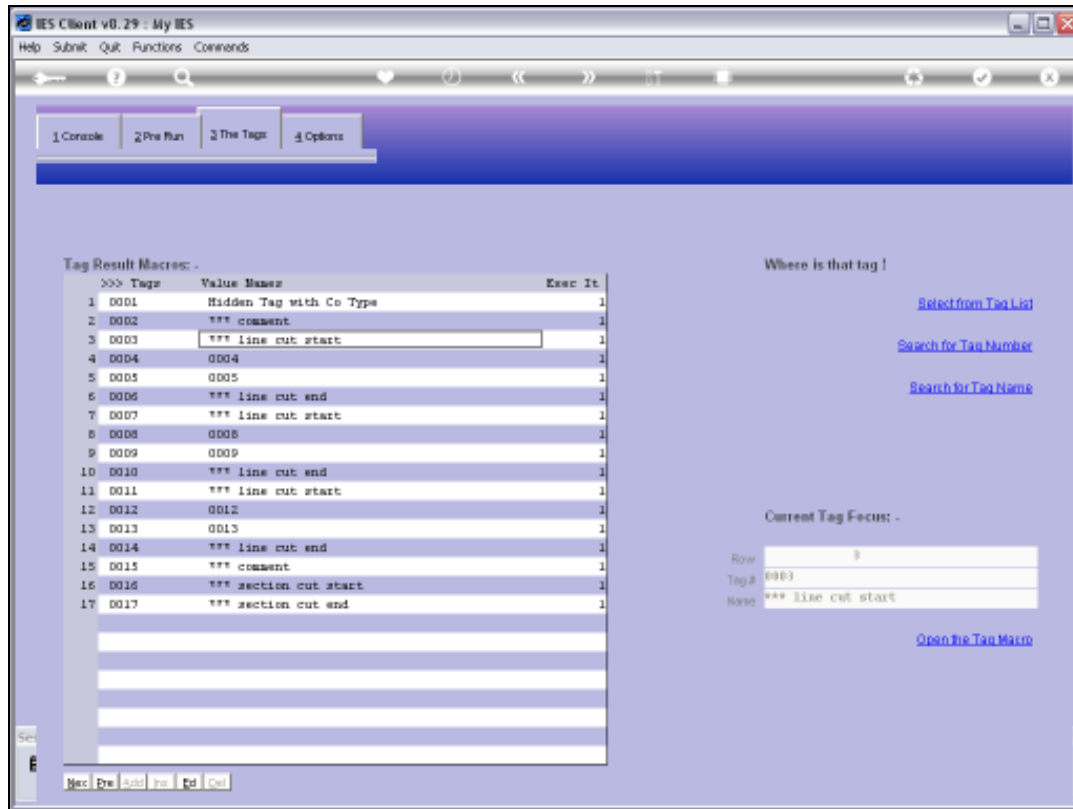
Slide 19

Slide notes: And we state the Value to test against. If the condition is true, then the Cut becomes effective. Therefore, in this case, if the Value found in Tag 1 is NOT 10, then the Cut will happen.



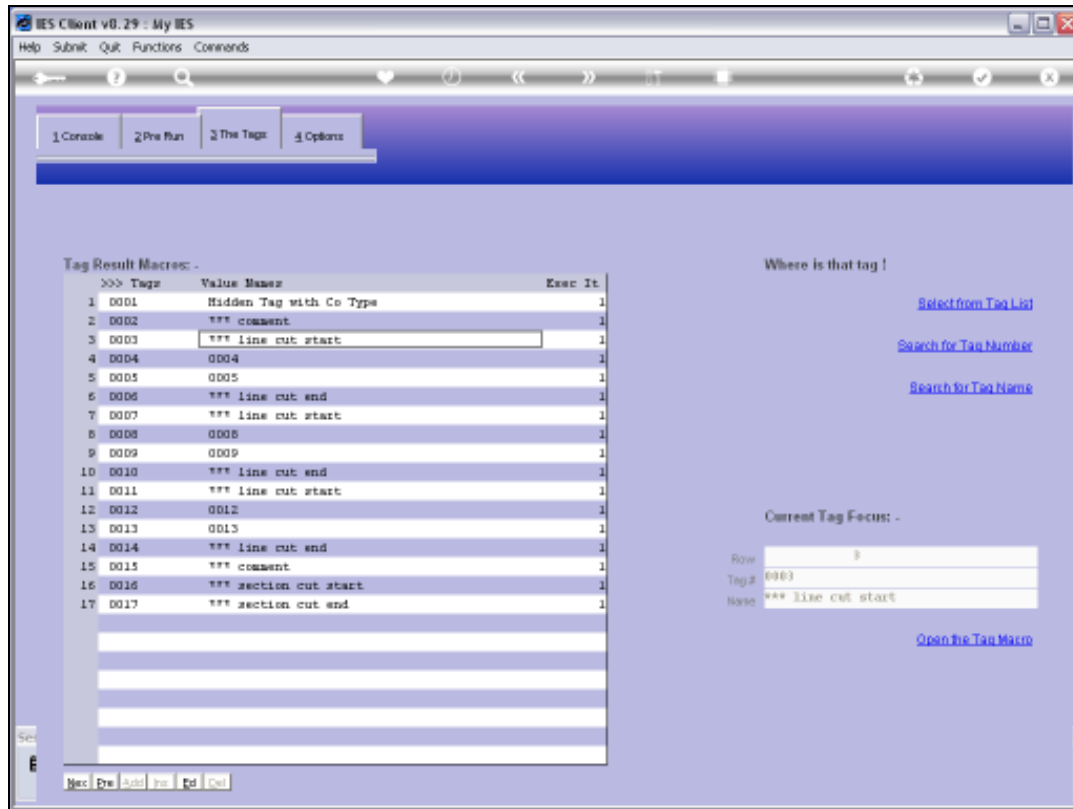
Slide 20

Slide notes:



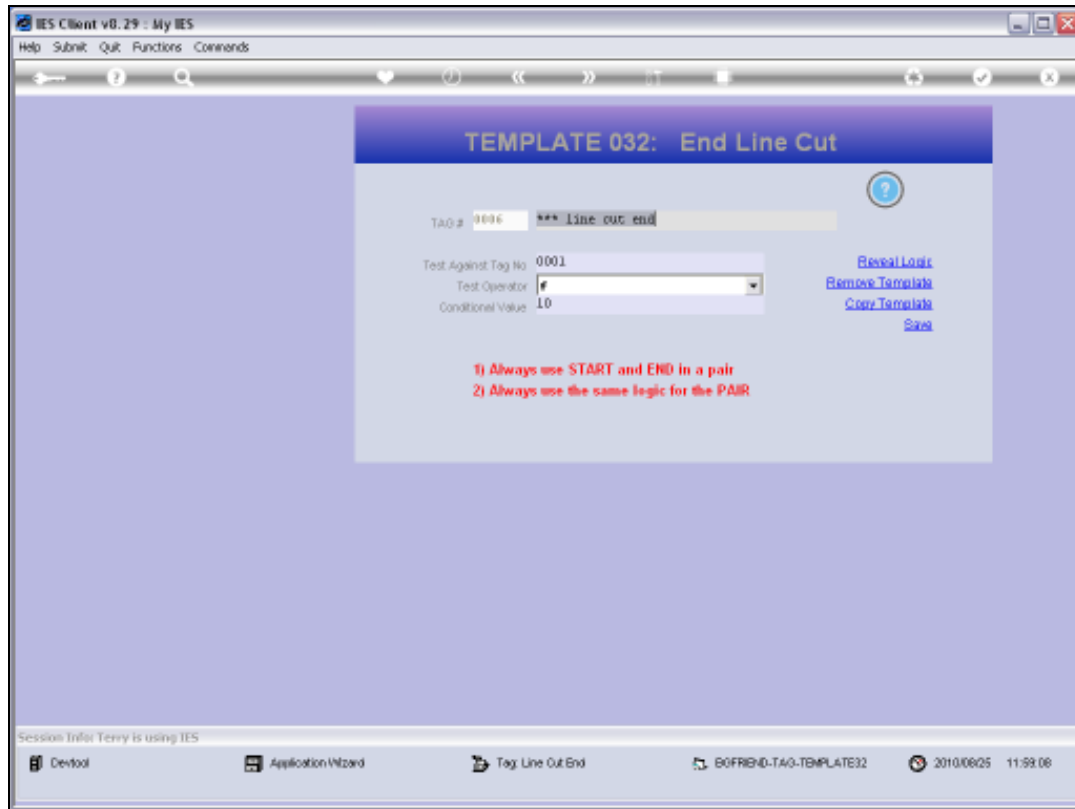
Slide 21

Slide notes:



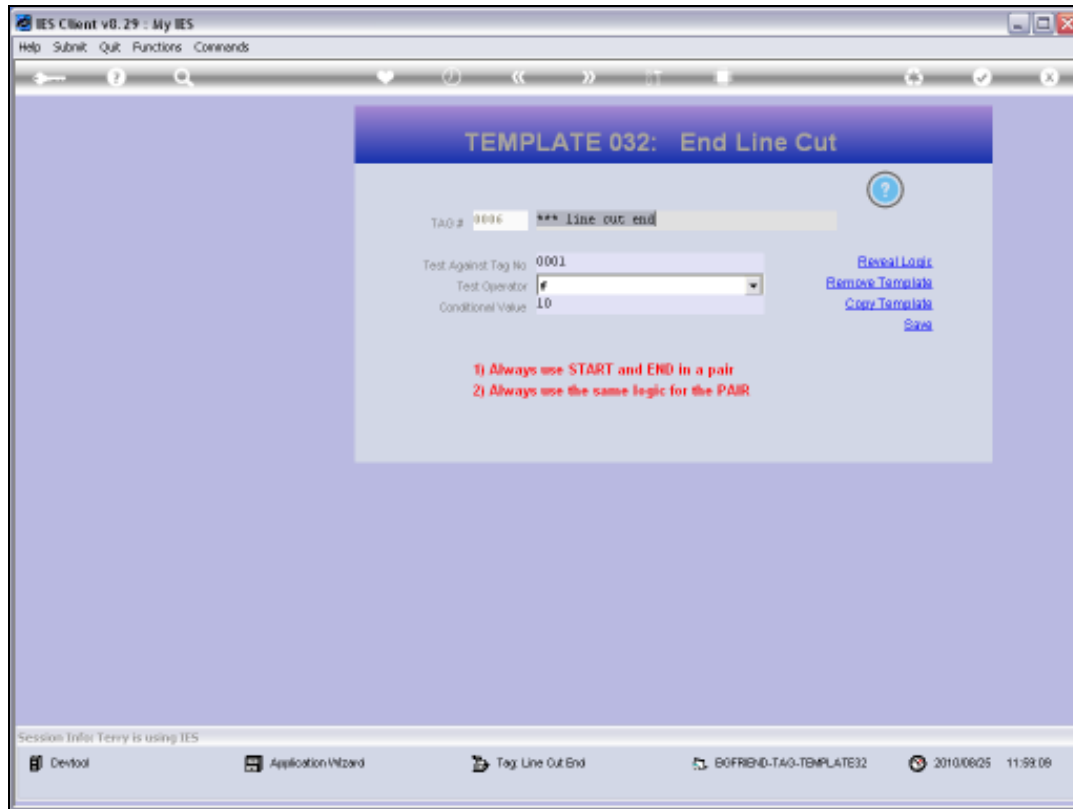
Slide 22

Slide notes:



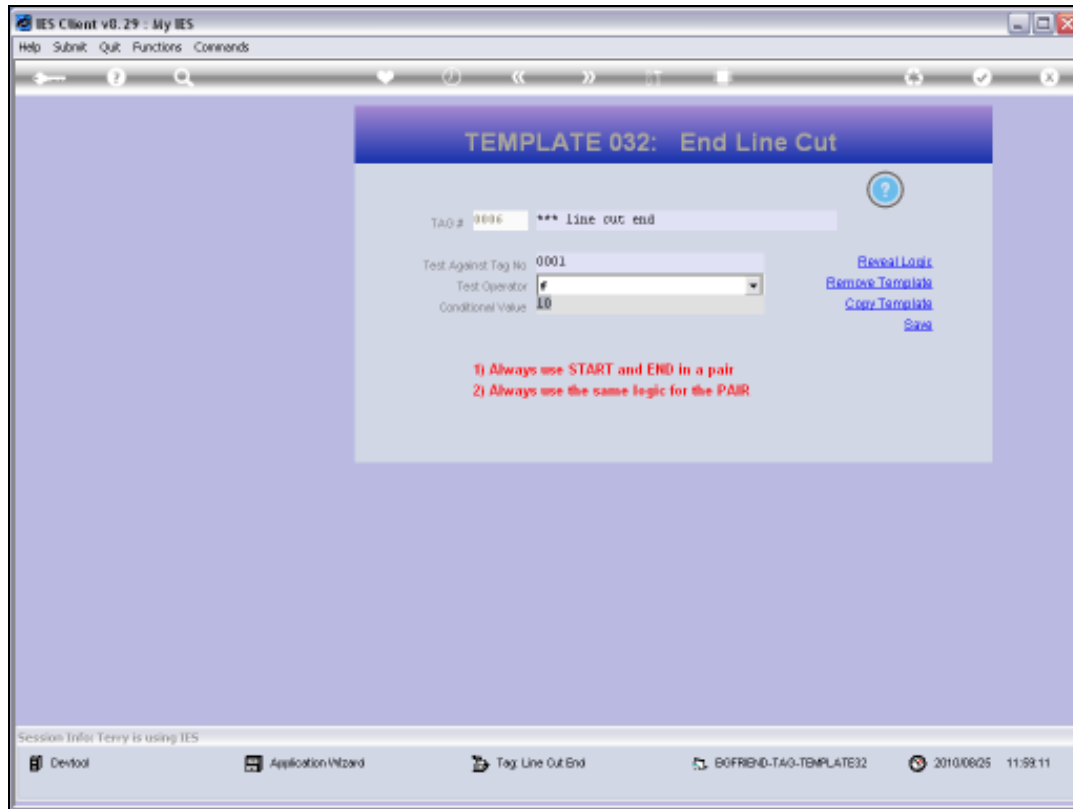
Slide 23

Slide notes: The 'End' Tag must always apply the same test.



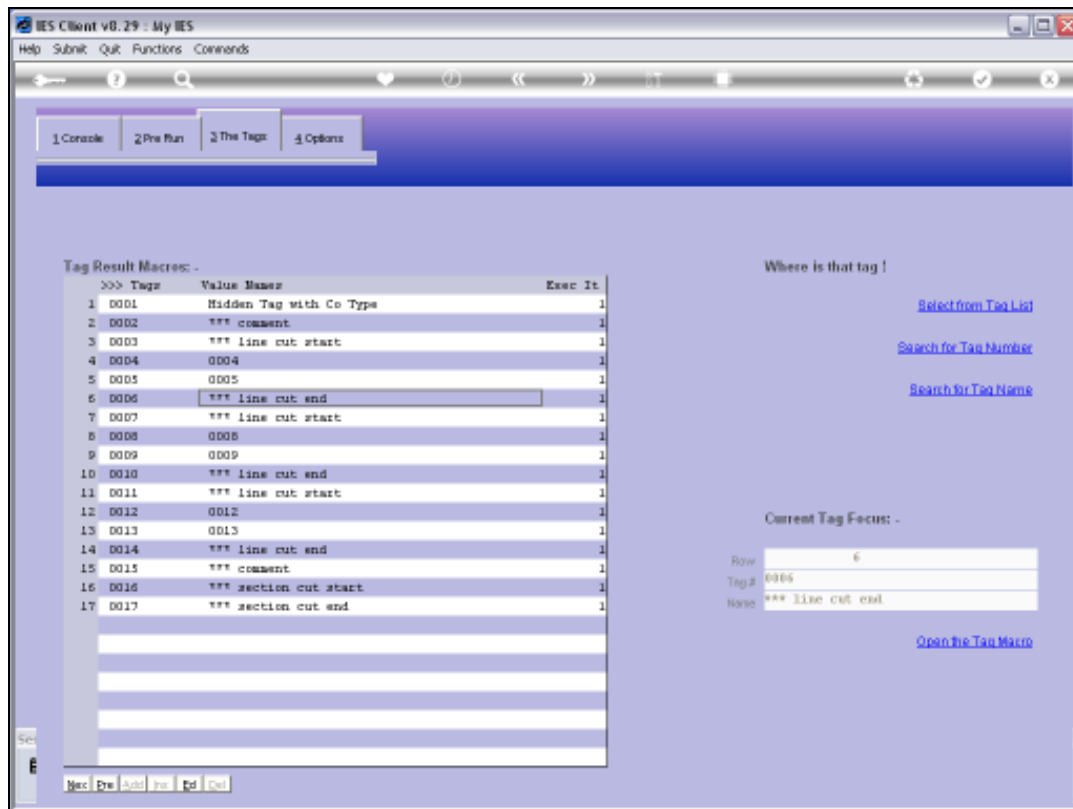
Slide 24

Slide notes:



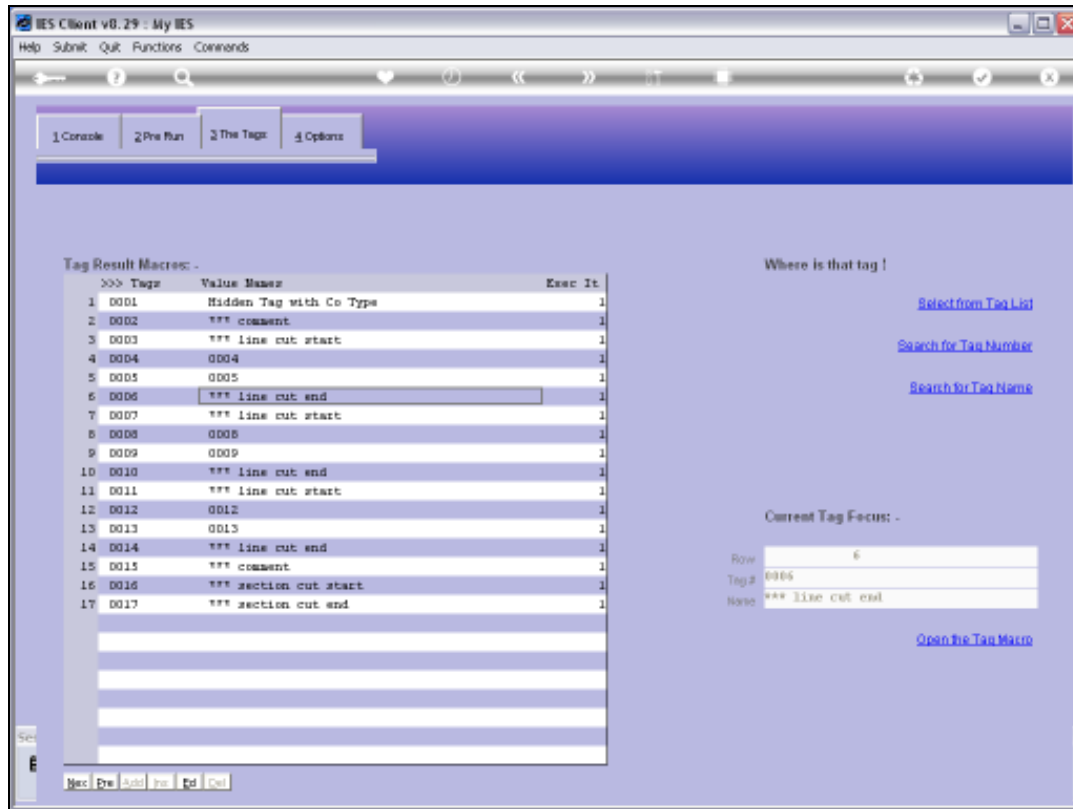
Slide 25

Slide notes:



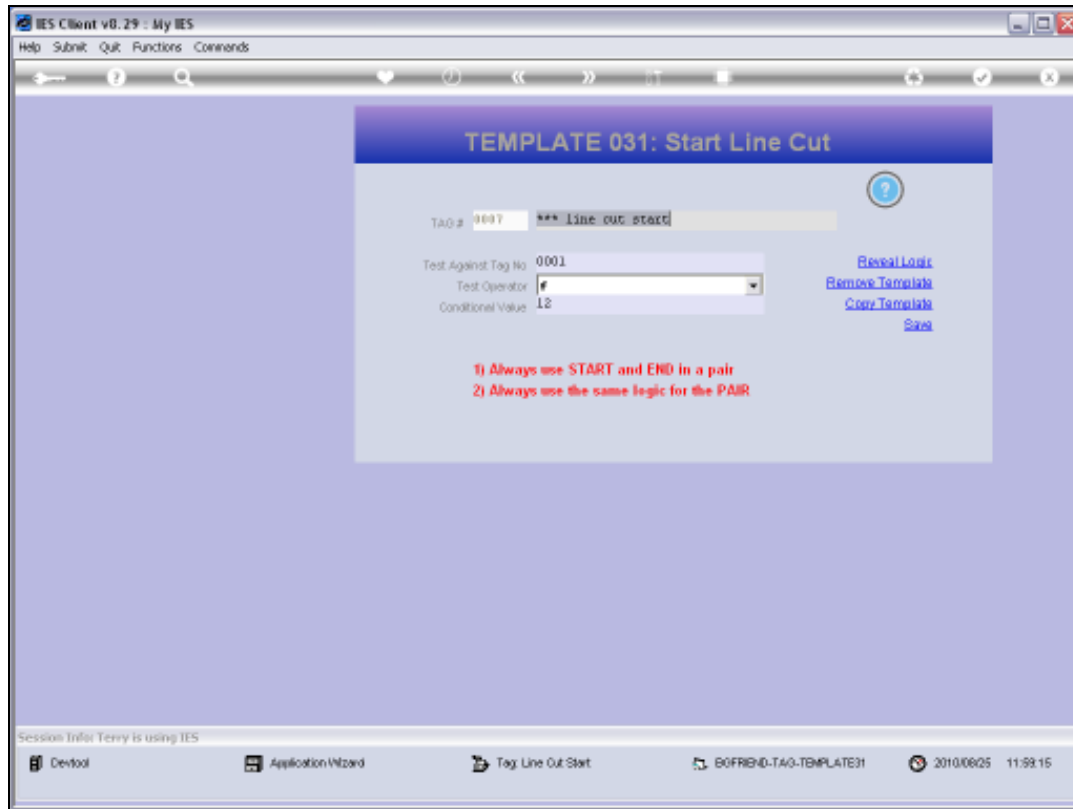
Slide 26

Slide notes:



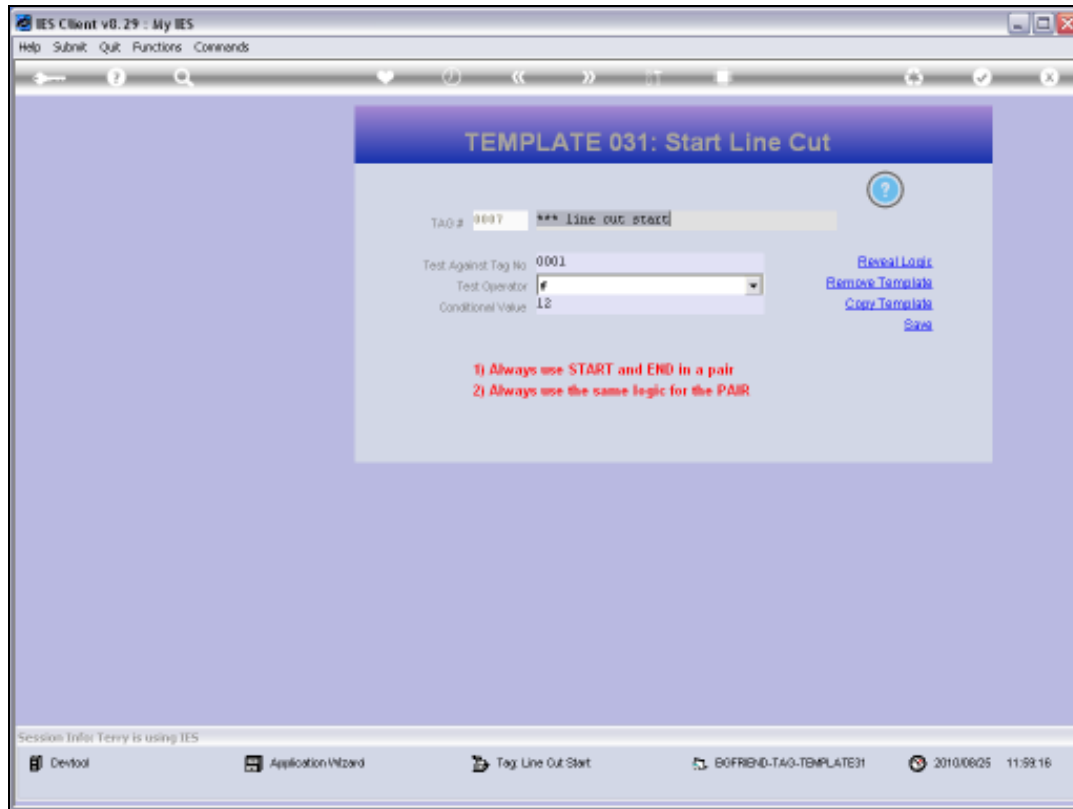
Slide 27

Slide notes:



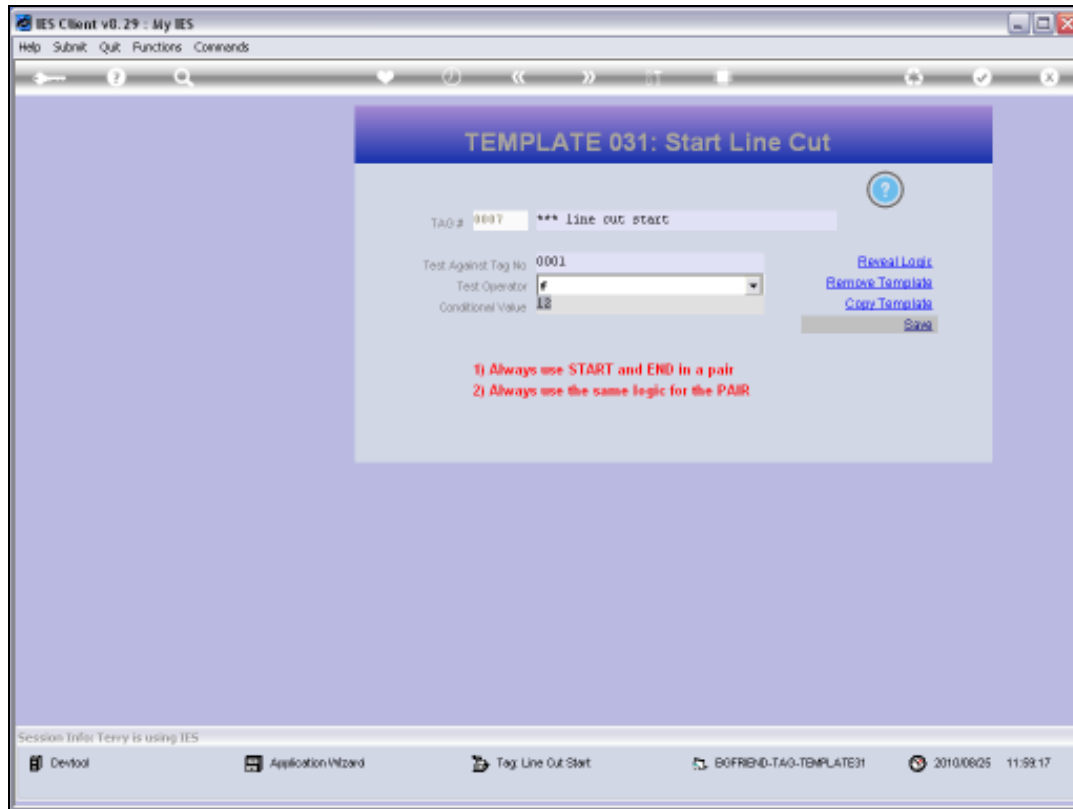
Slide 28

Slide notes: Our next set will test for the Value of 12.



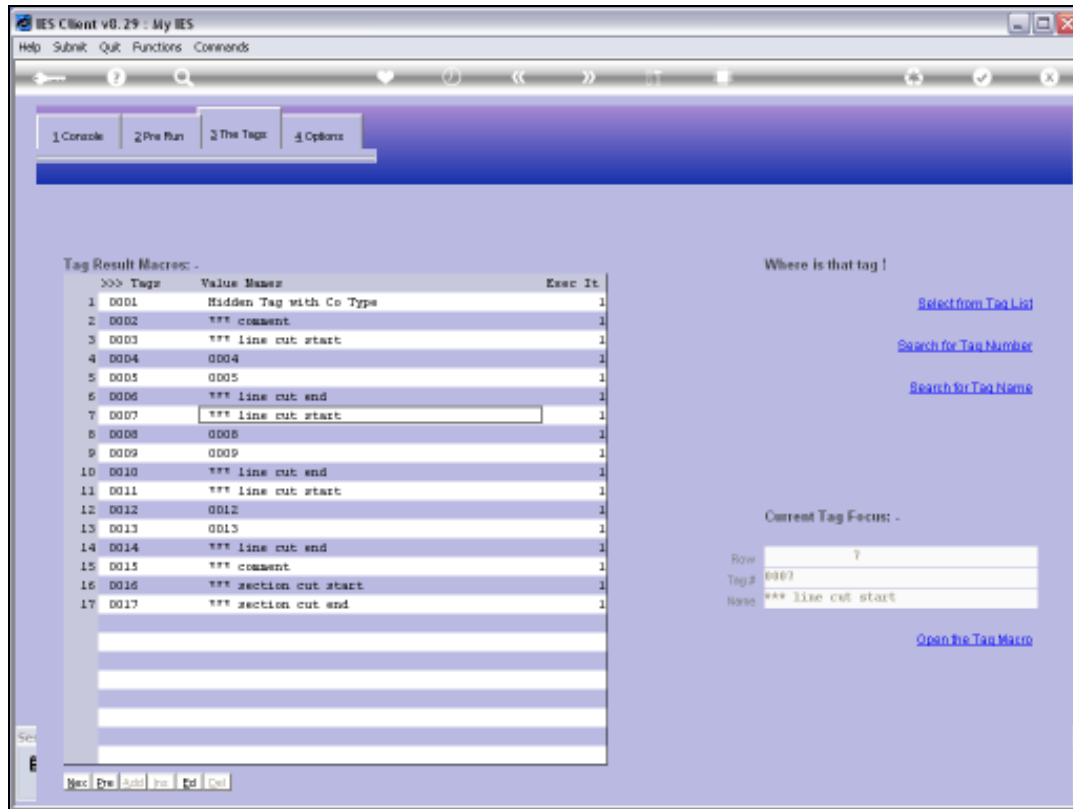
Slide 29

Slide notes:



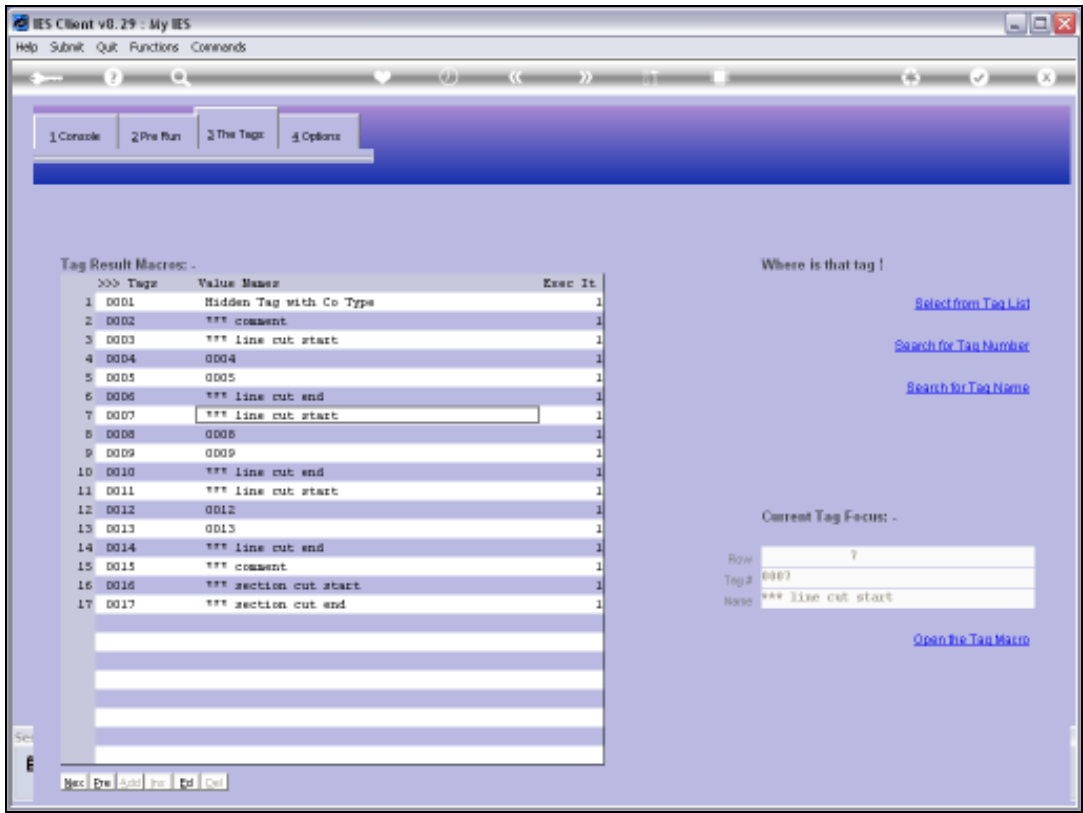
Slide 30

Slide notes:

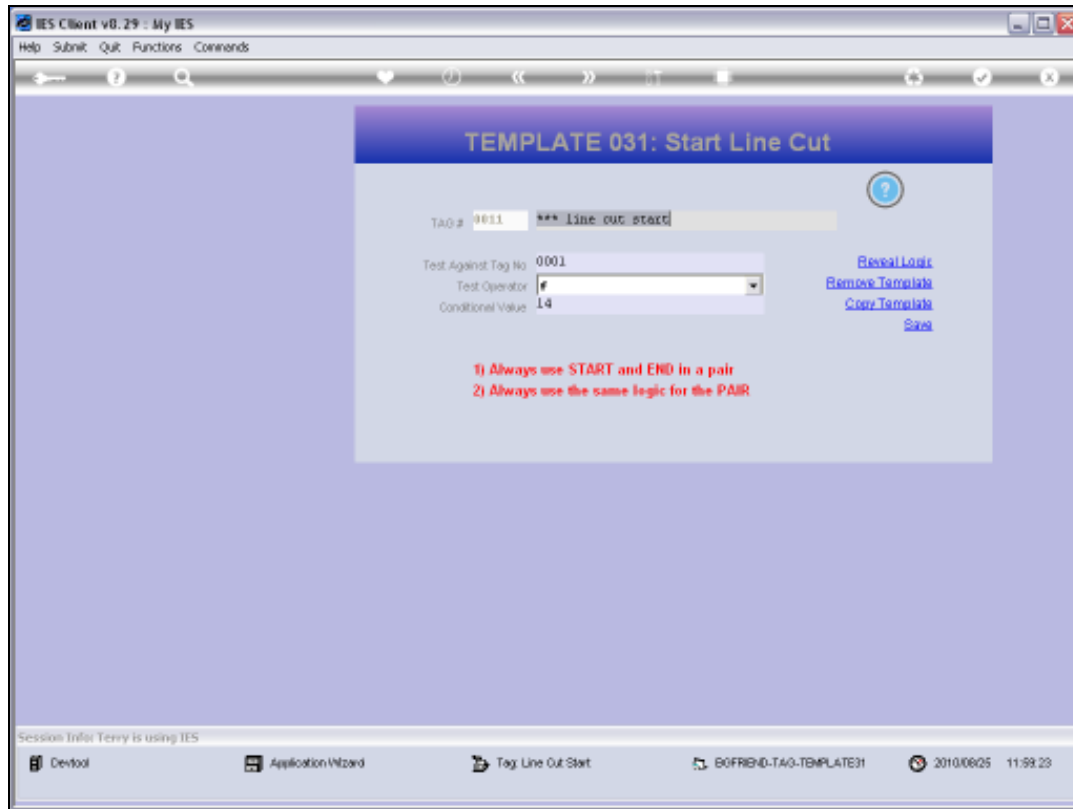


Slide 31

Slide notes:

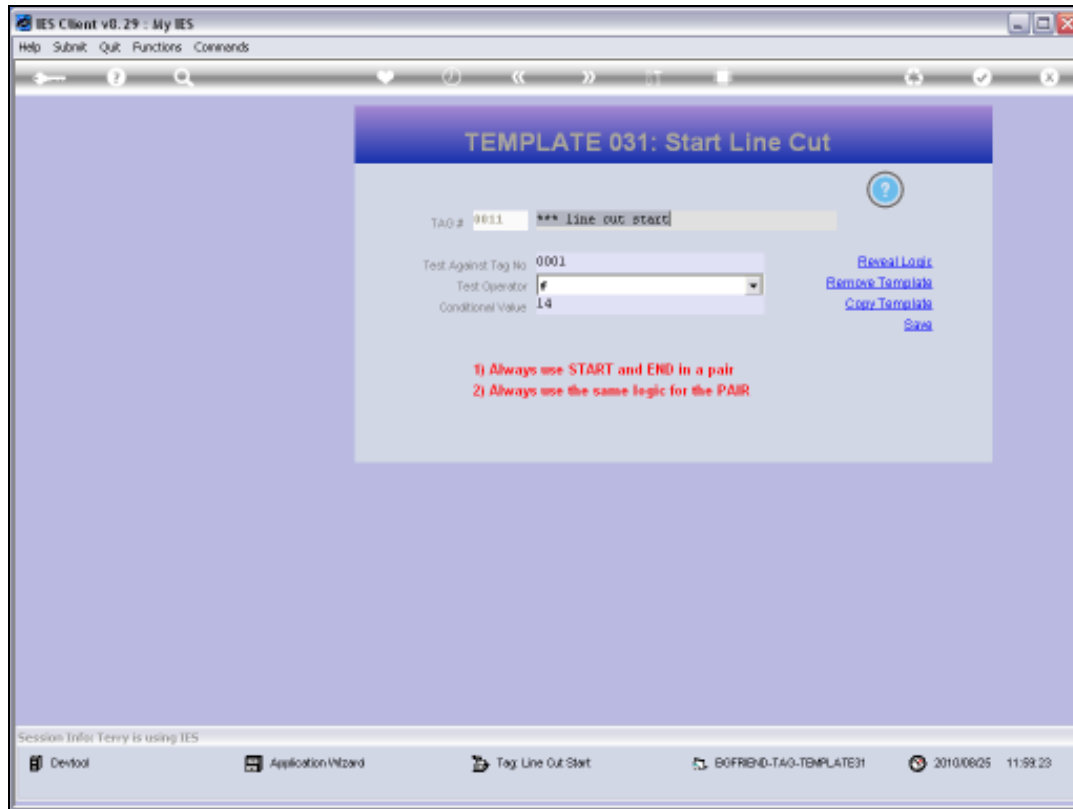


Slide 32
Slide notes:



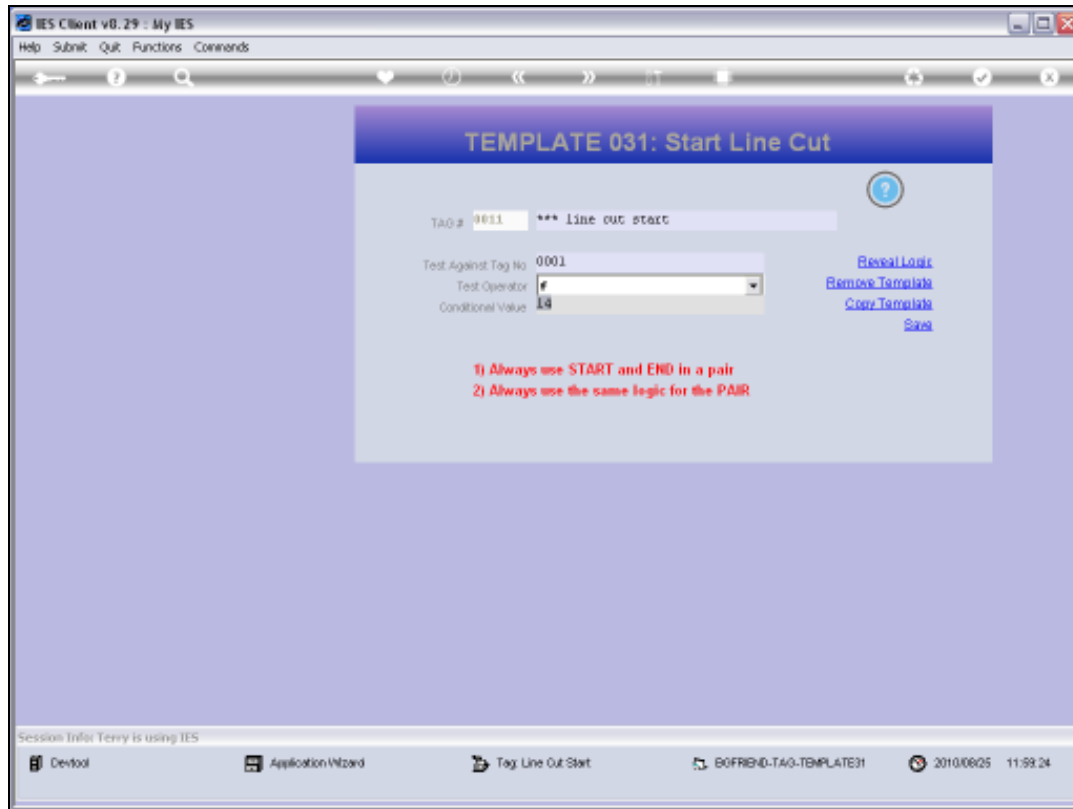
Slide 33

Slide notes: And our 3rd set tests for the Value of 14.



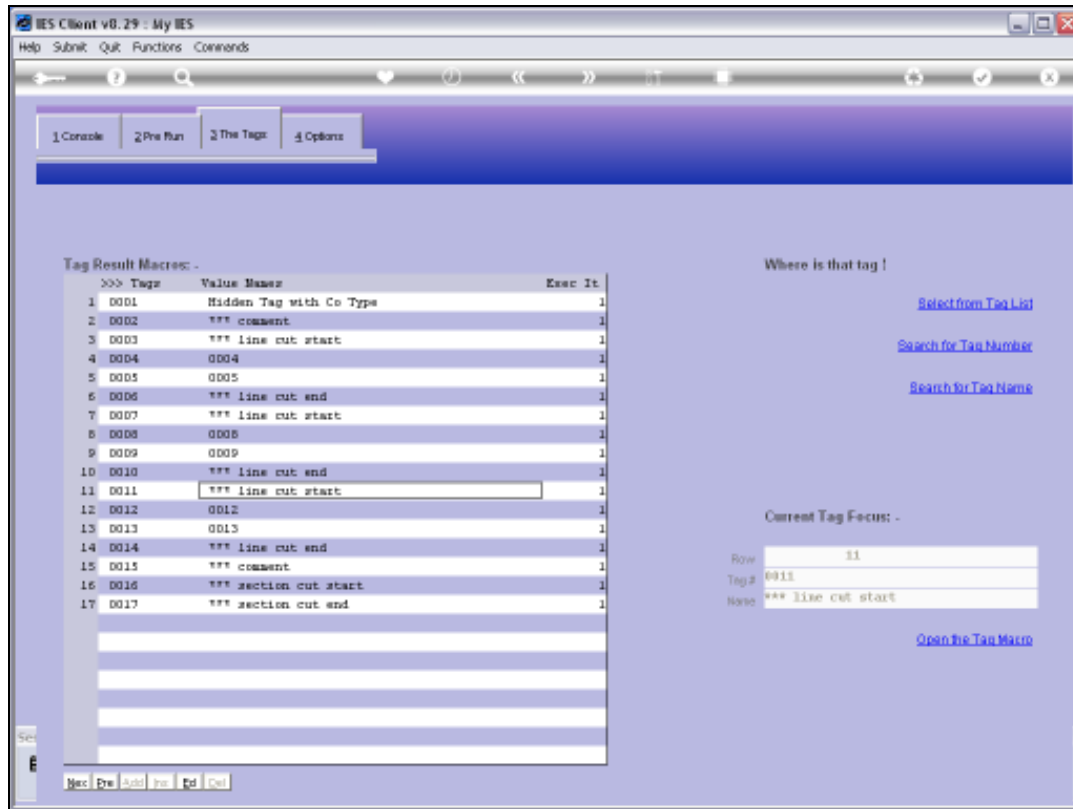
Slide 34

Slide notes:



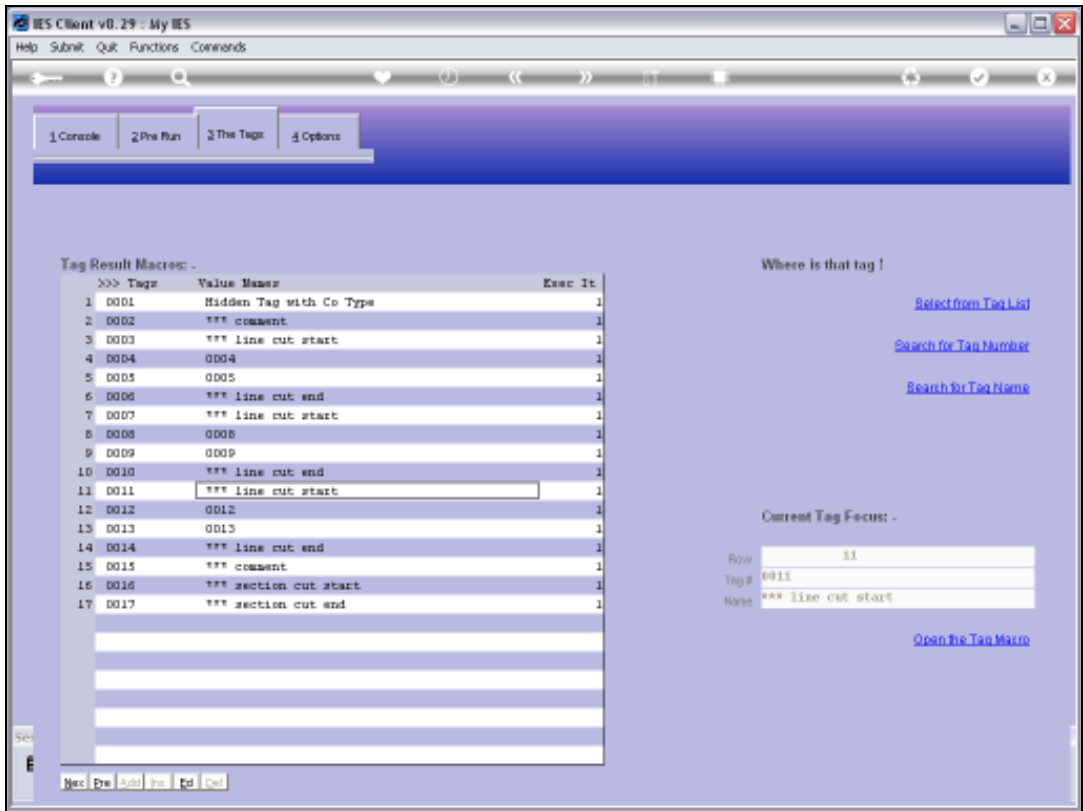
Slide 35

Slide notes:

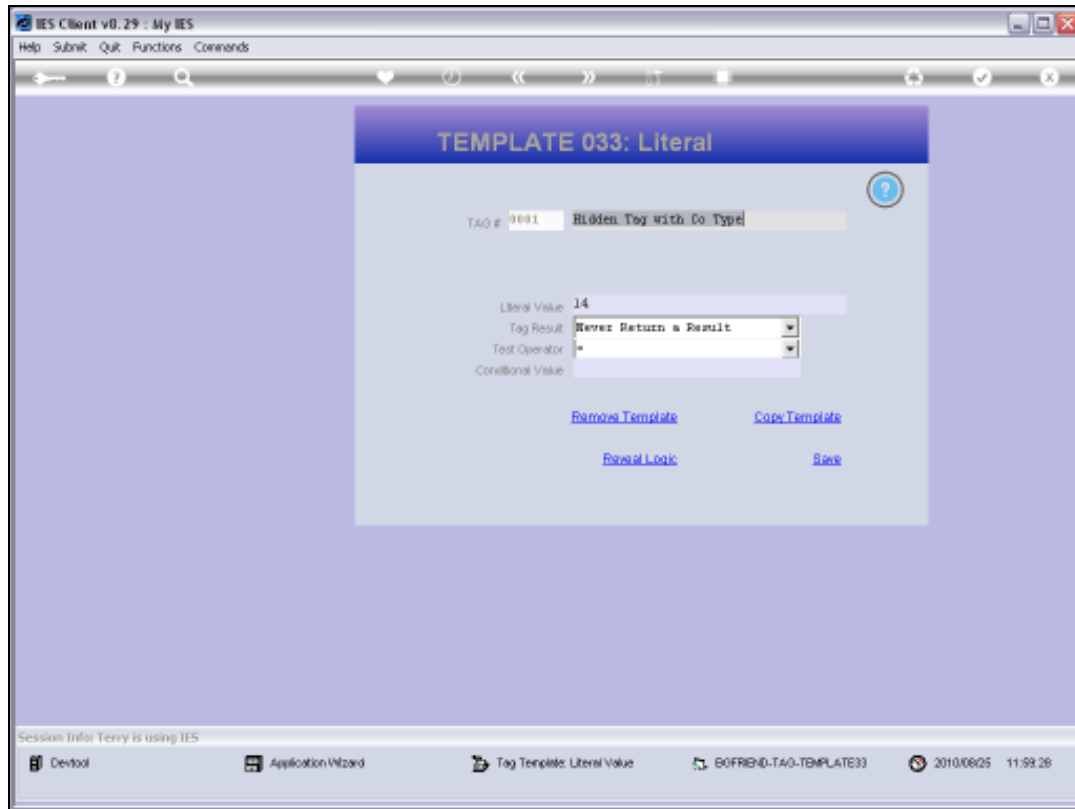


Slide 36

Slide notes:

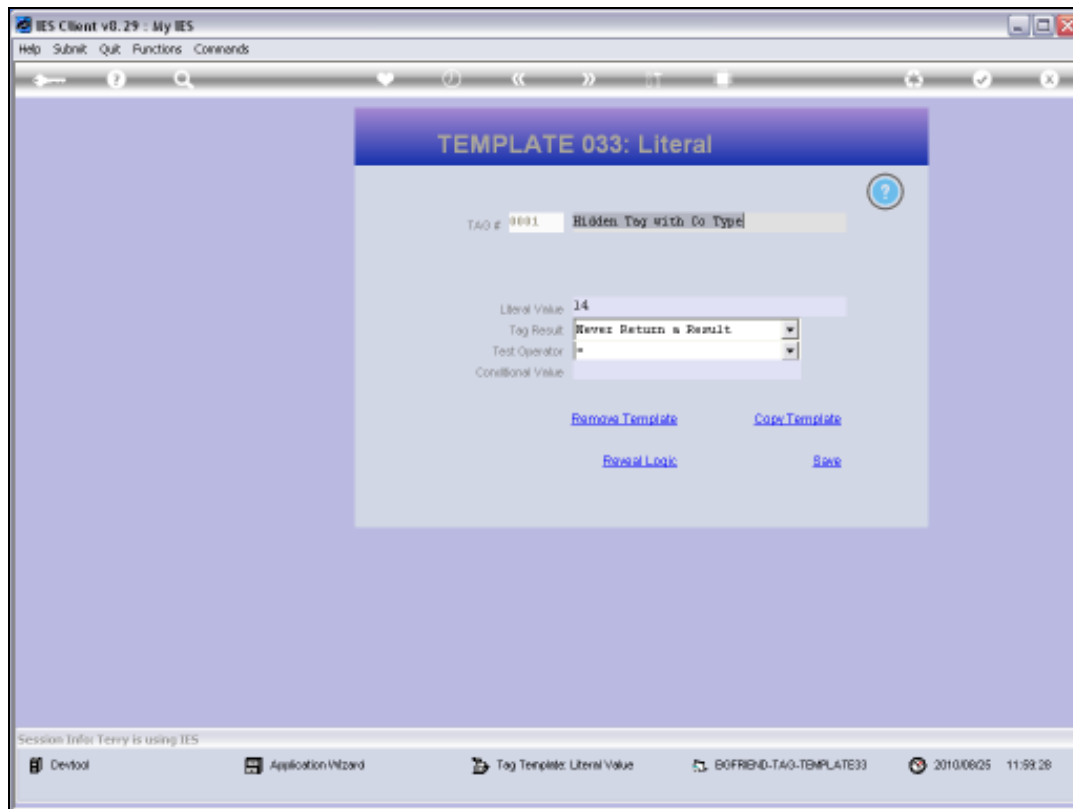


Slide 37
Slide notes:



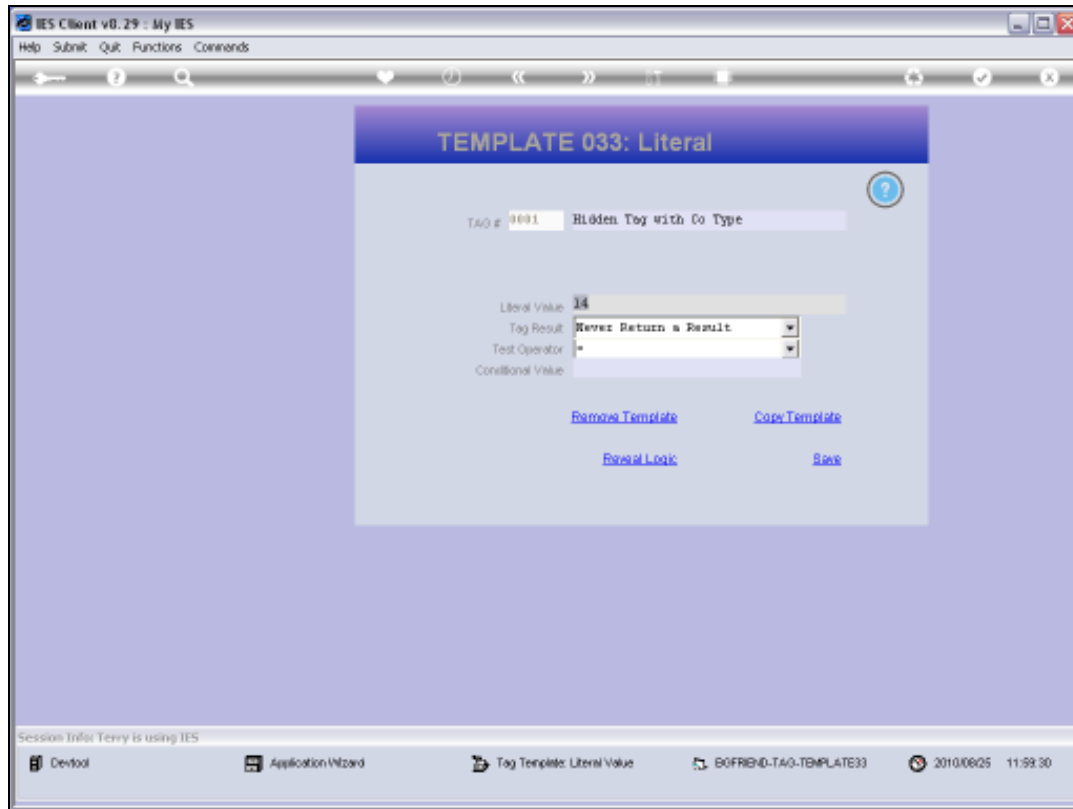
Slide 38

Slide notes: Our Company Type is currently set at 14. If it is not 10, 12 or 14 then all 3 lines will be cut, but now that it is 14, the 1st 2 lines should be cut and the 3rd Line will show on the Report. We note that the Tag for the Company Type is just an example that we are controlling manually here, but it can be any Tag that is dependent on Report data at the time.



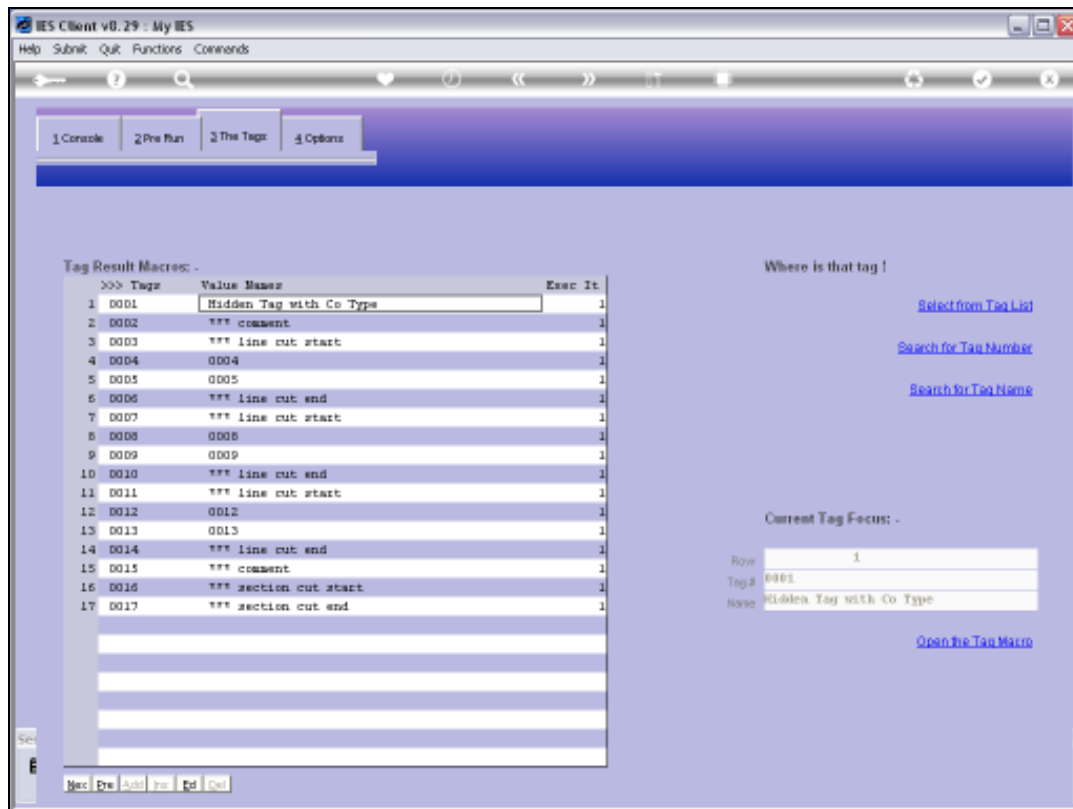
Slide 39

Slide notes:



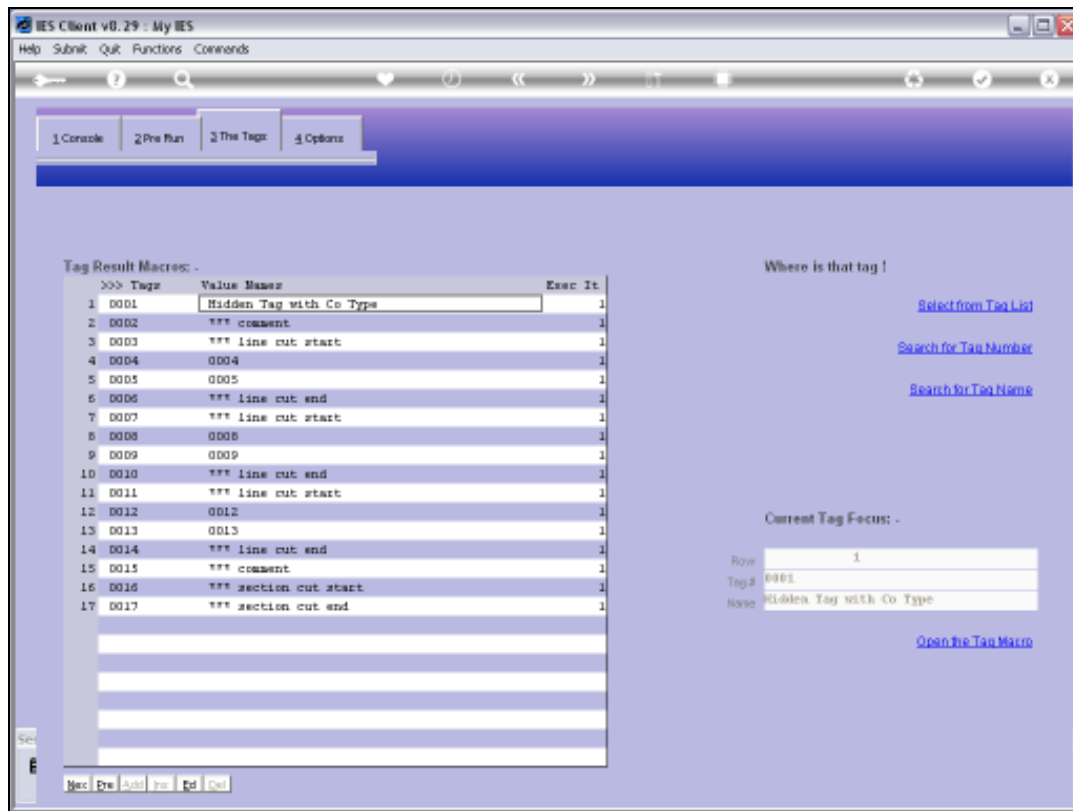
Slide 40

Slide notes:



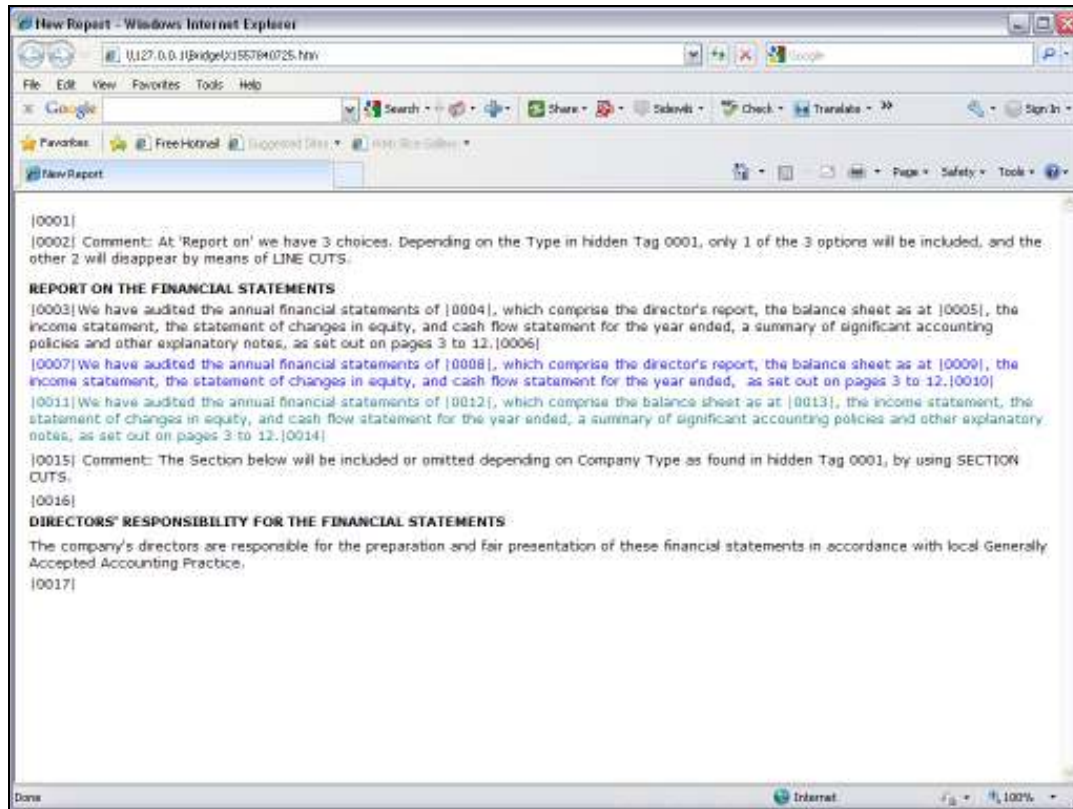
Slide 41

Slide notes:



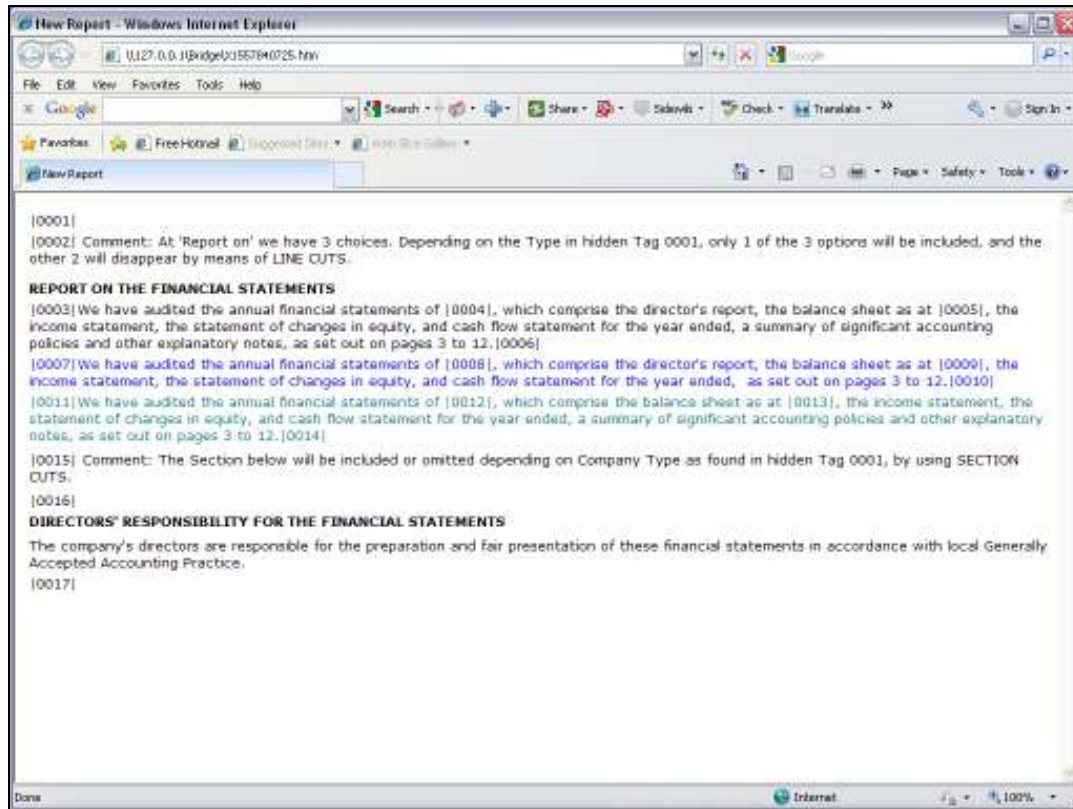
Slide 42

Slide notes:



Slide 43

Slide notes: This is our Layout, and the 3rd line is the green one, which we expect to appear in our Report.



Slide 44

Slide notes:



Slide 45

Slide notes:



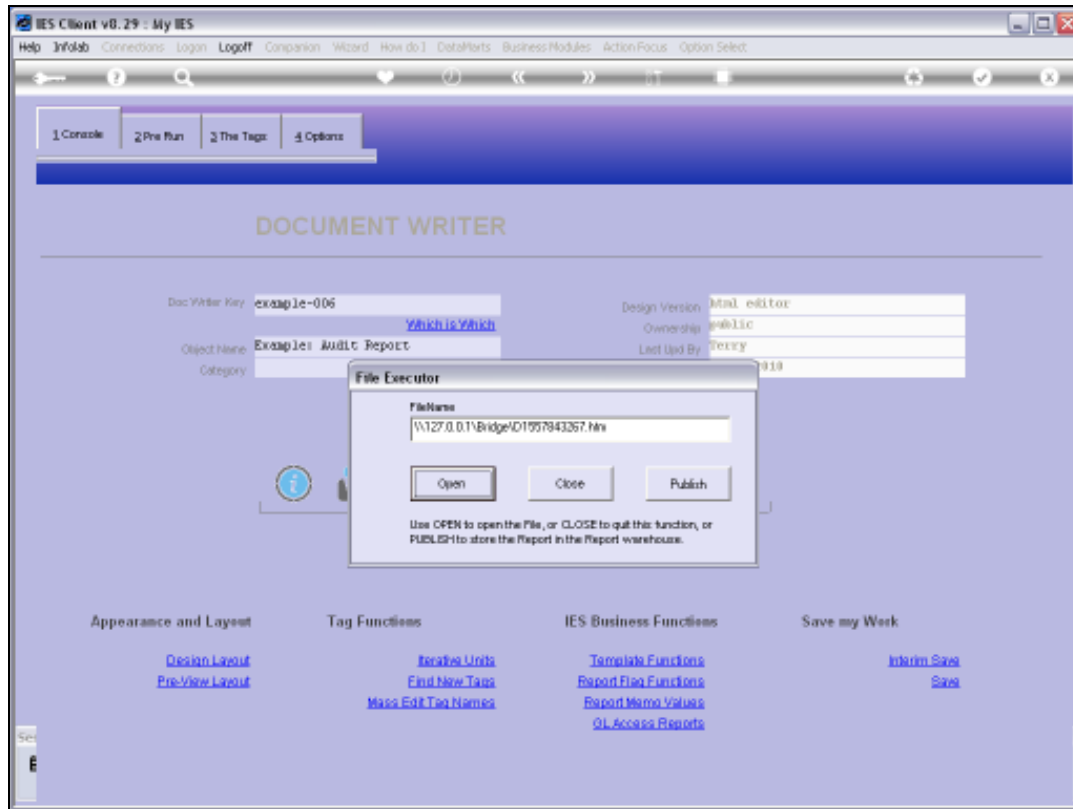
Slide 46

Slide notes:



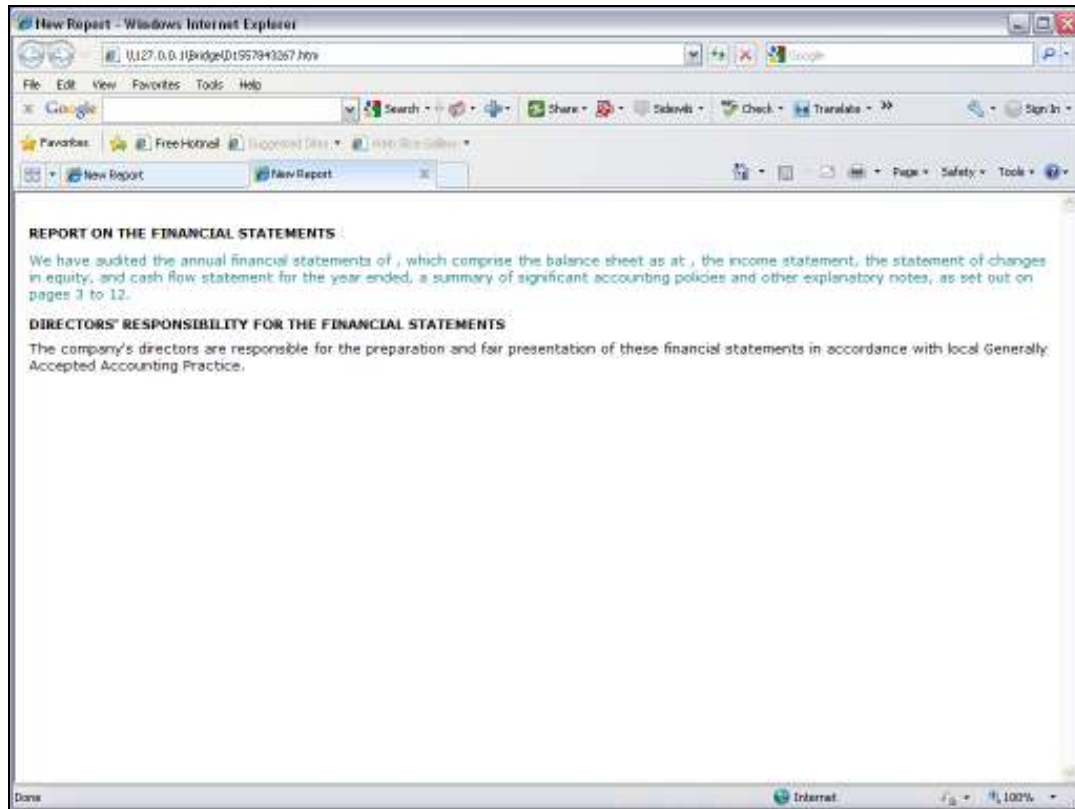
Slide 47

Slide notes:



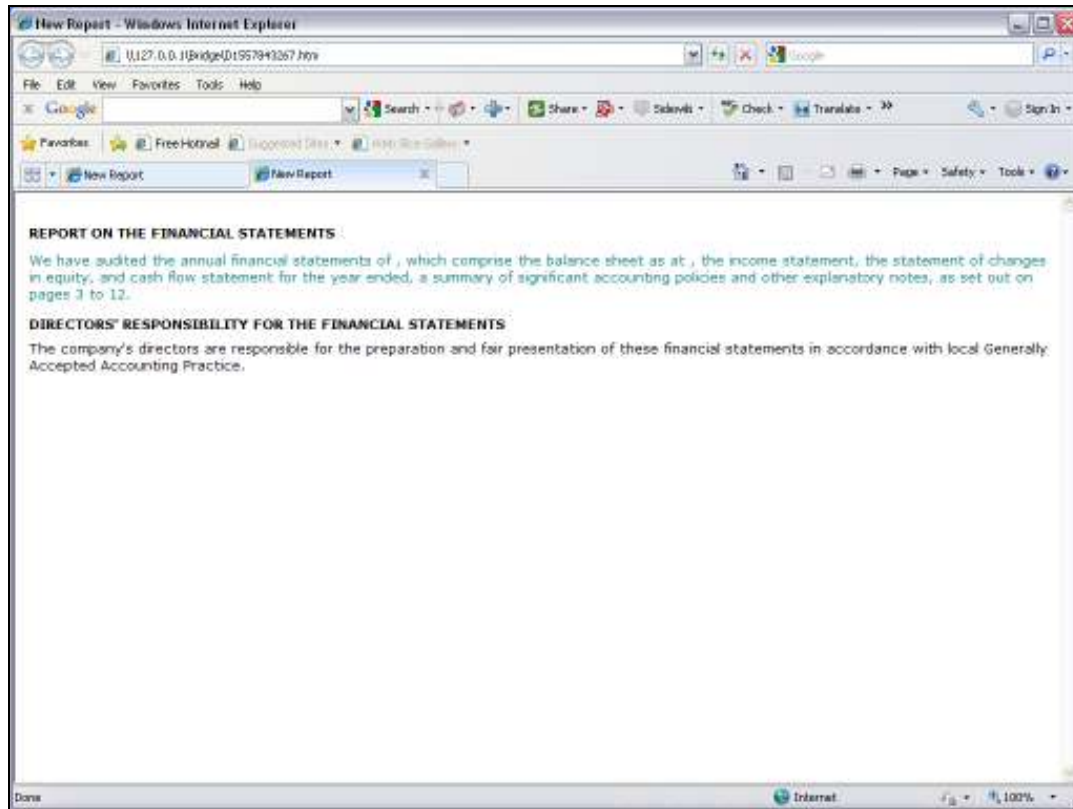
Slide 48

Slide notes:



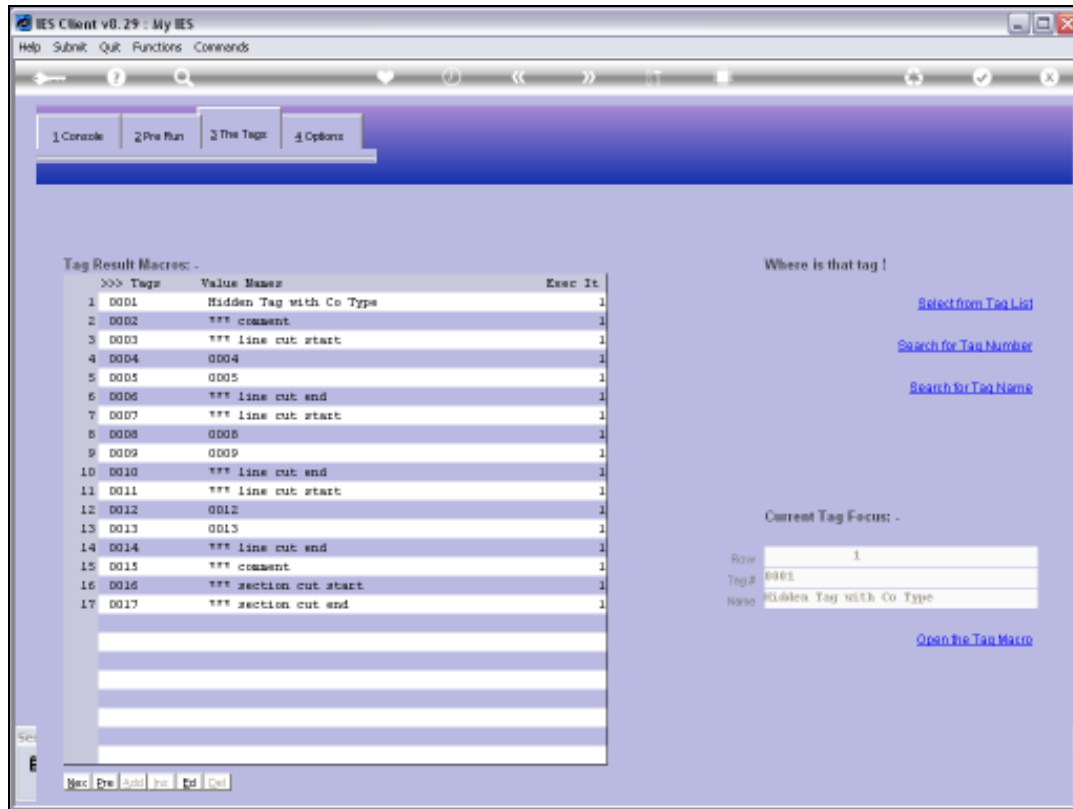
Slide 49

Slide notes: The green line is present, and the others are not. So the Line Cut is working properly.



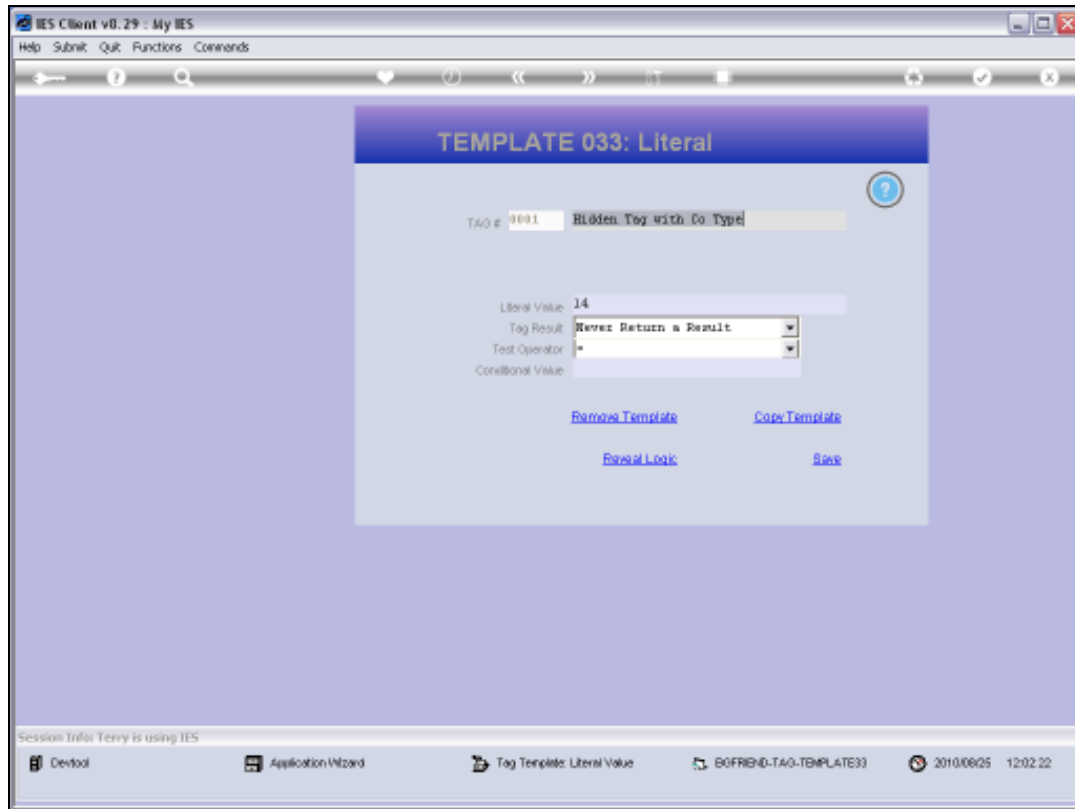
Slide 50

Slide notes:



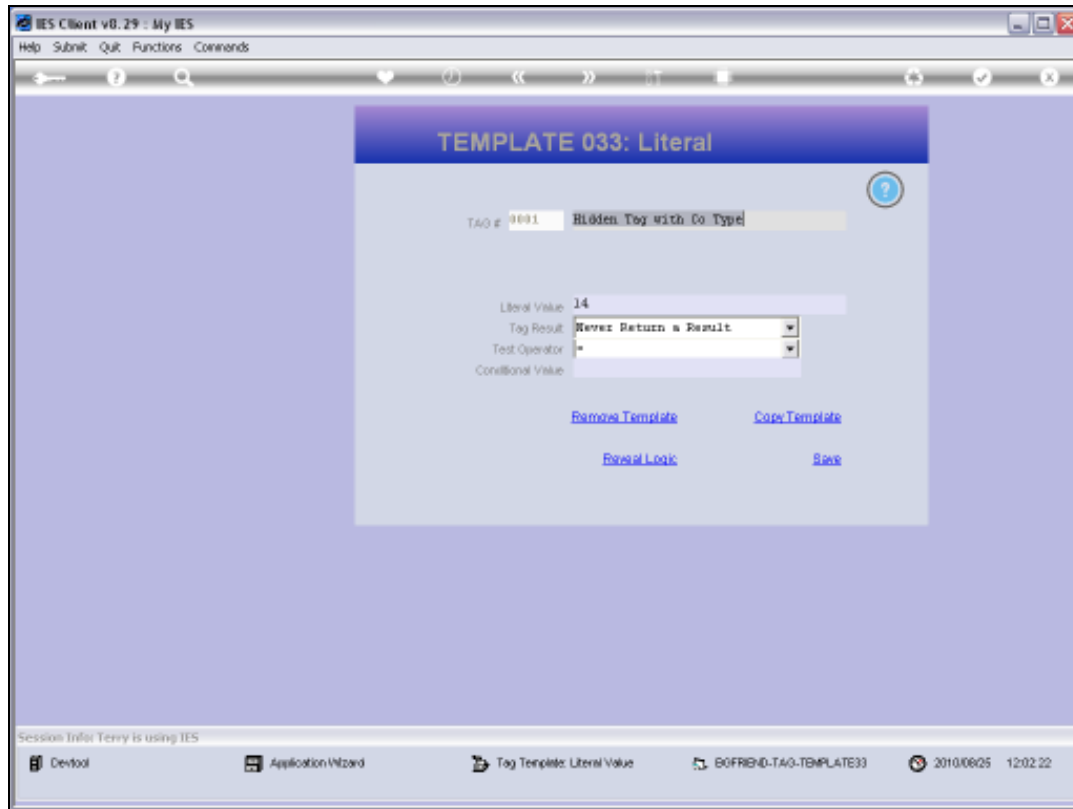
Slide 51

Slide notes:



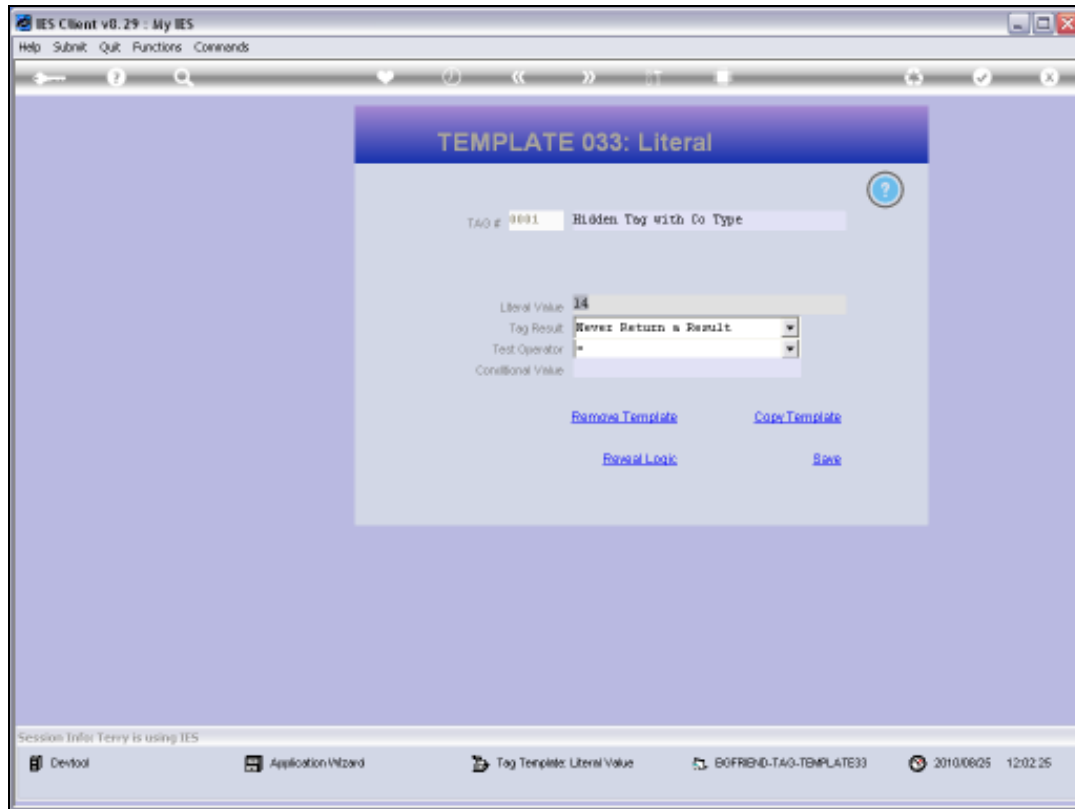
Slide 52

Slide notes:



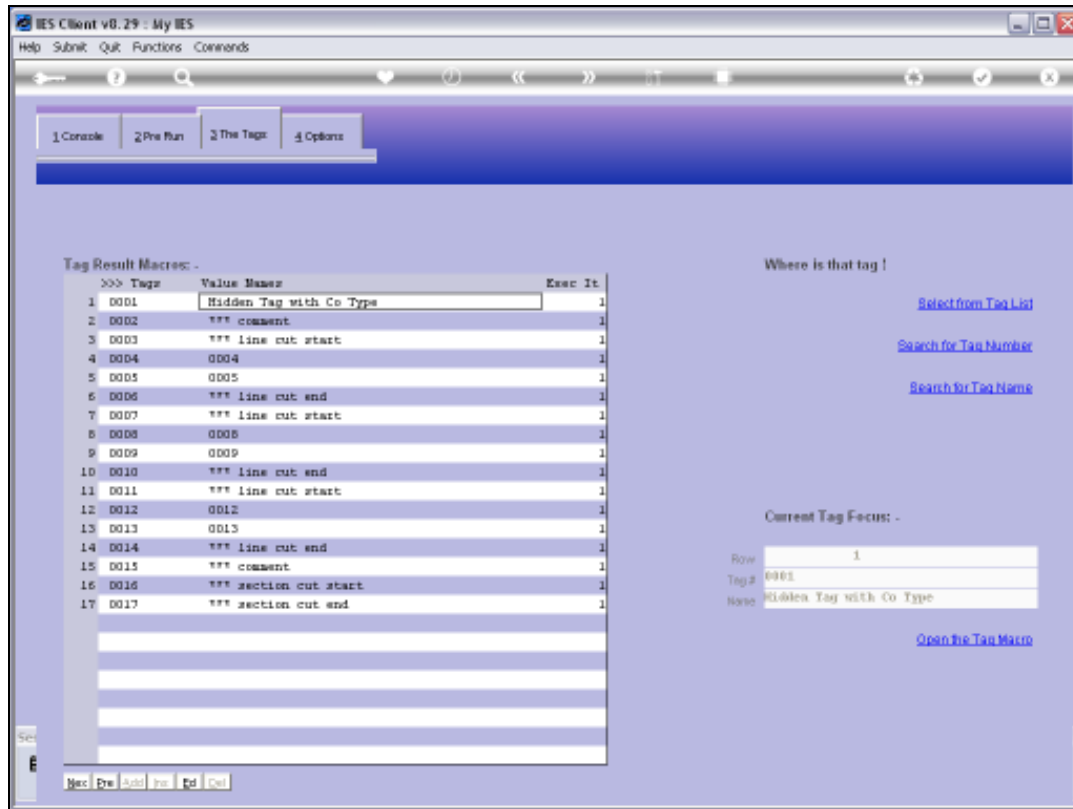
Slide 53

Slide notes:



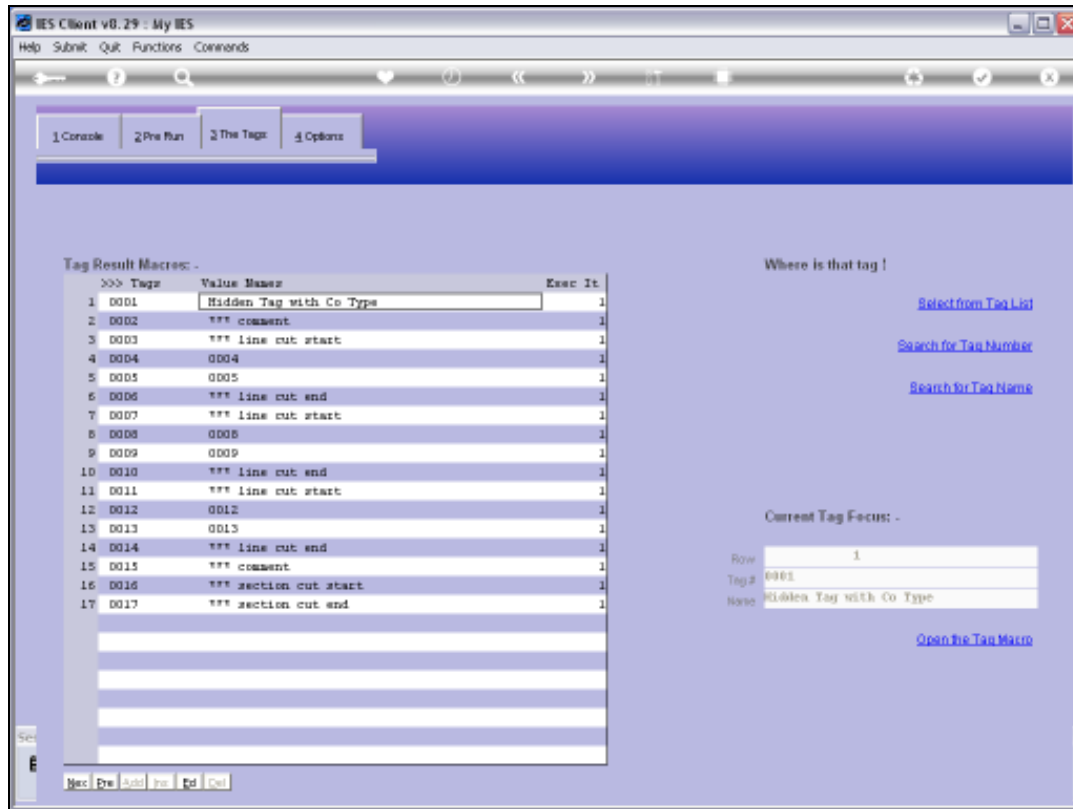
Slide 54

Slide notes: So now we change the Company Type to 12, just to test, and this time we expect the Blue Line to appear, while the others are cut.



Slide 55

Slide notes:



Slide 56

Slide notes:



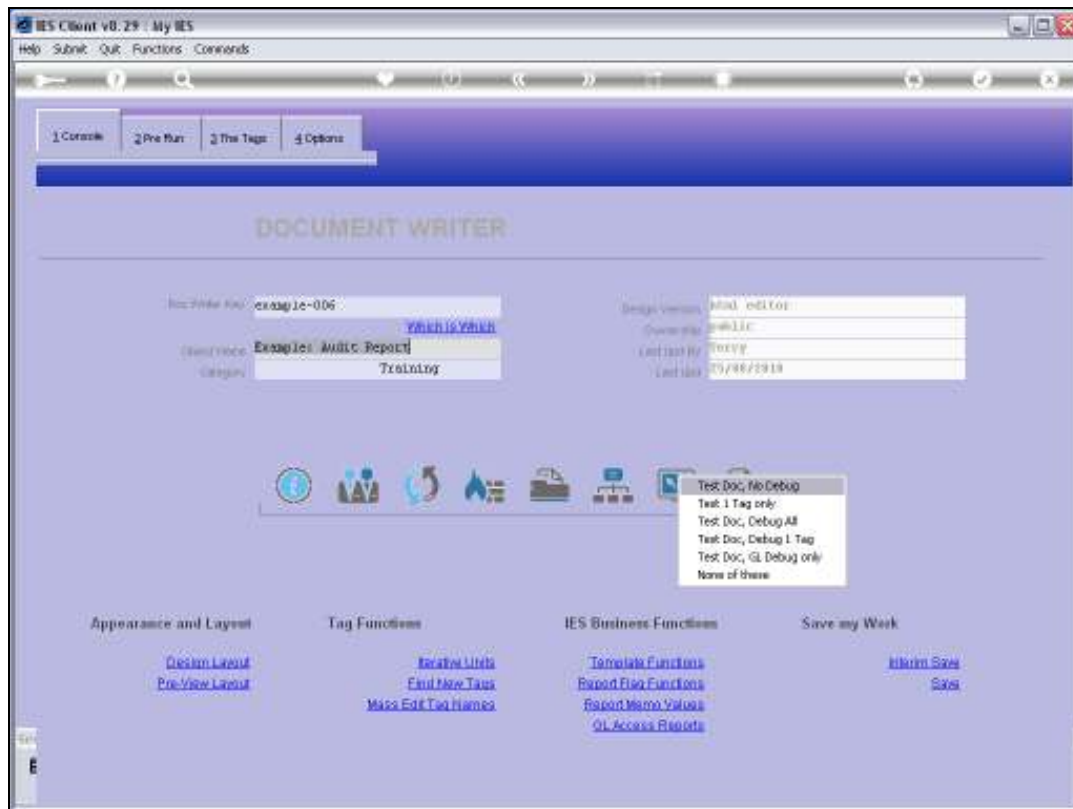
Slide 57

Slide notes:



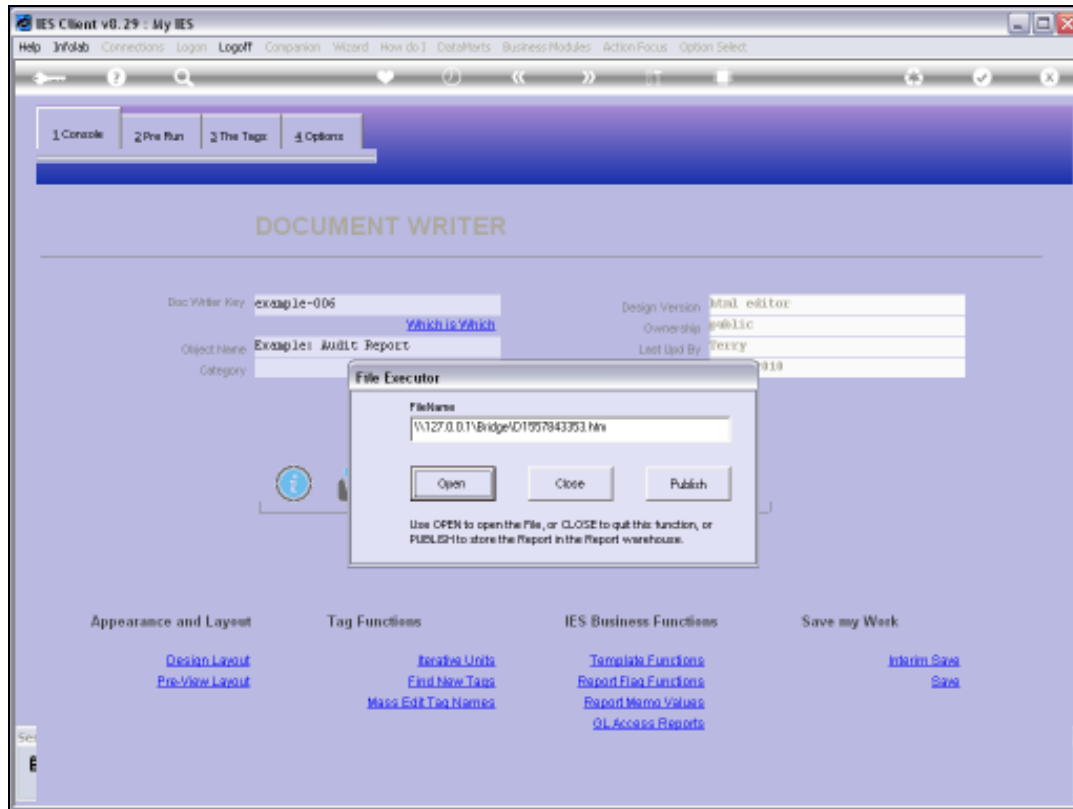
Slide 58

Slide notes:



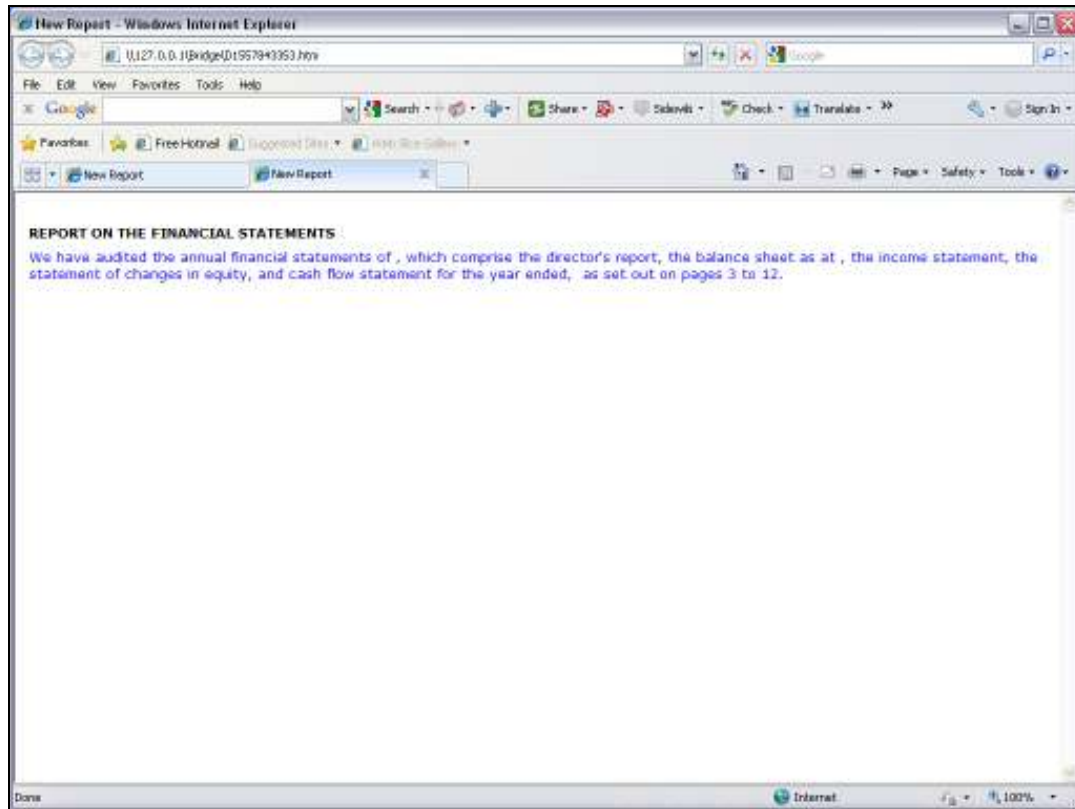
Slide 59

Slide notes:



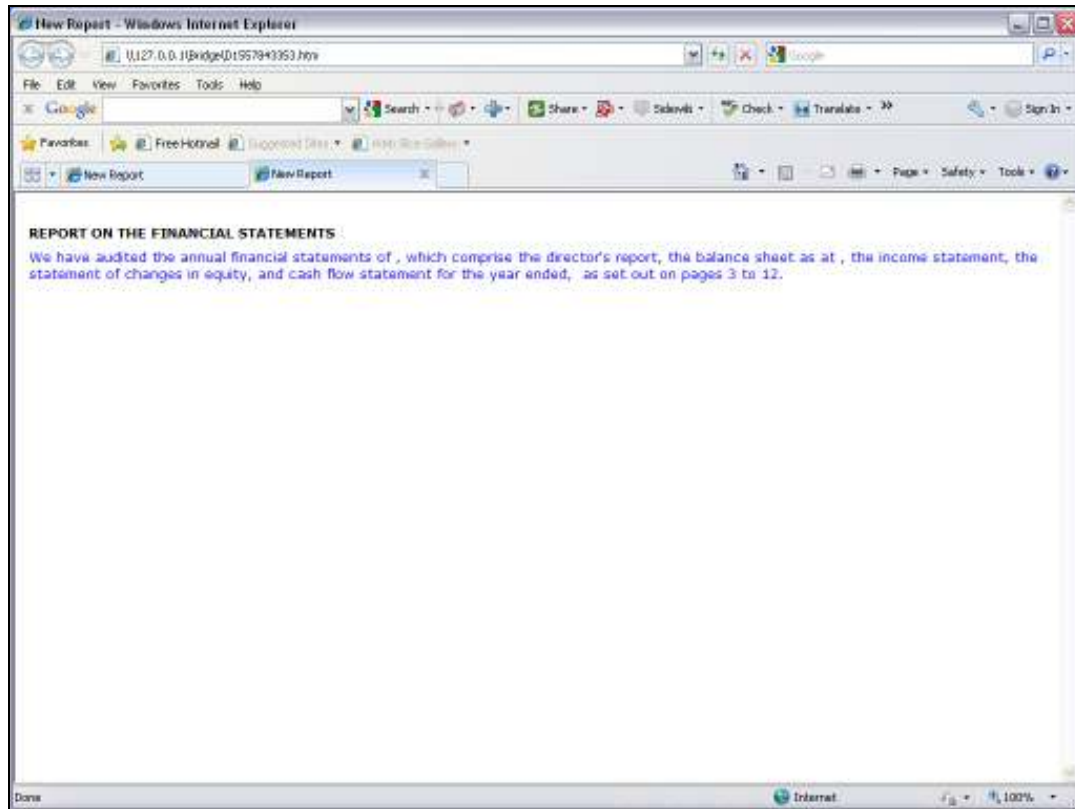
Slide 60

Slide notes:



Slide 61

Slide notes: And indeed we find that the Blue line appears. So this is an example of how we can use Line Cuts.



Slide 62

Slide notes: