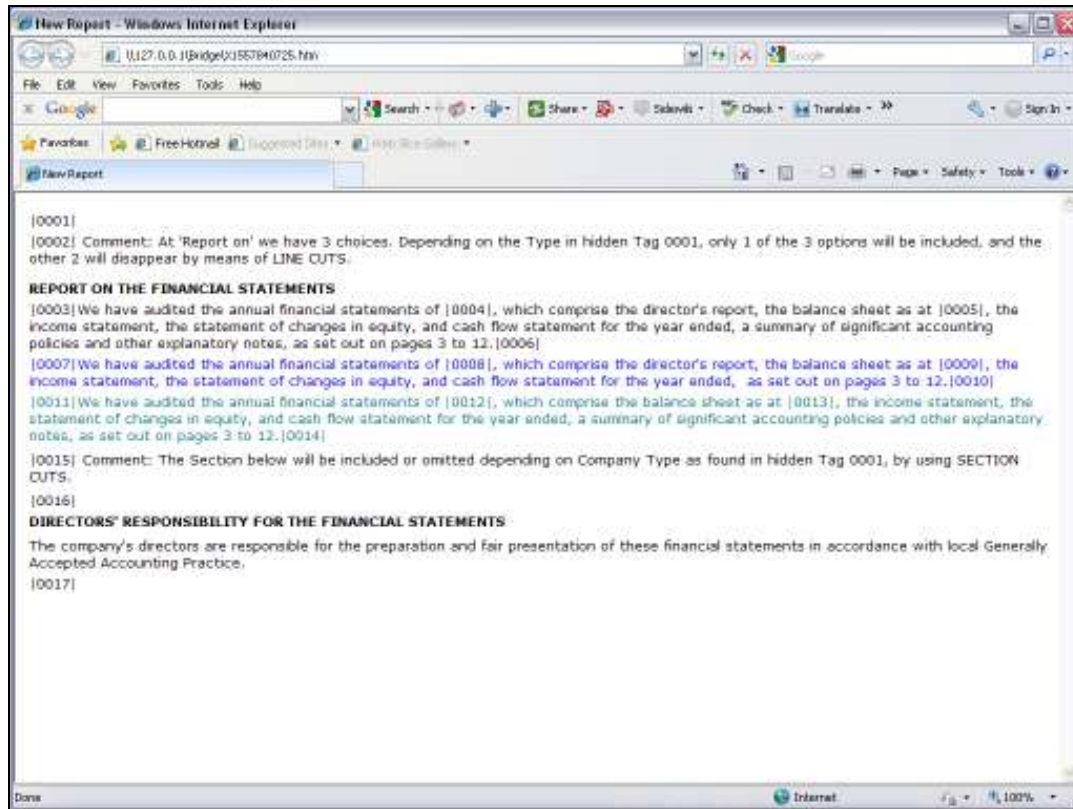


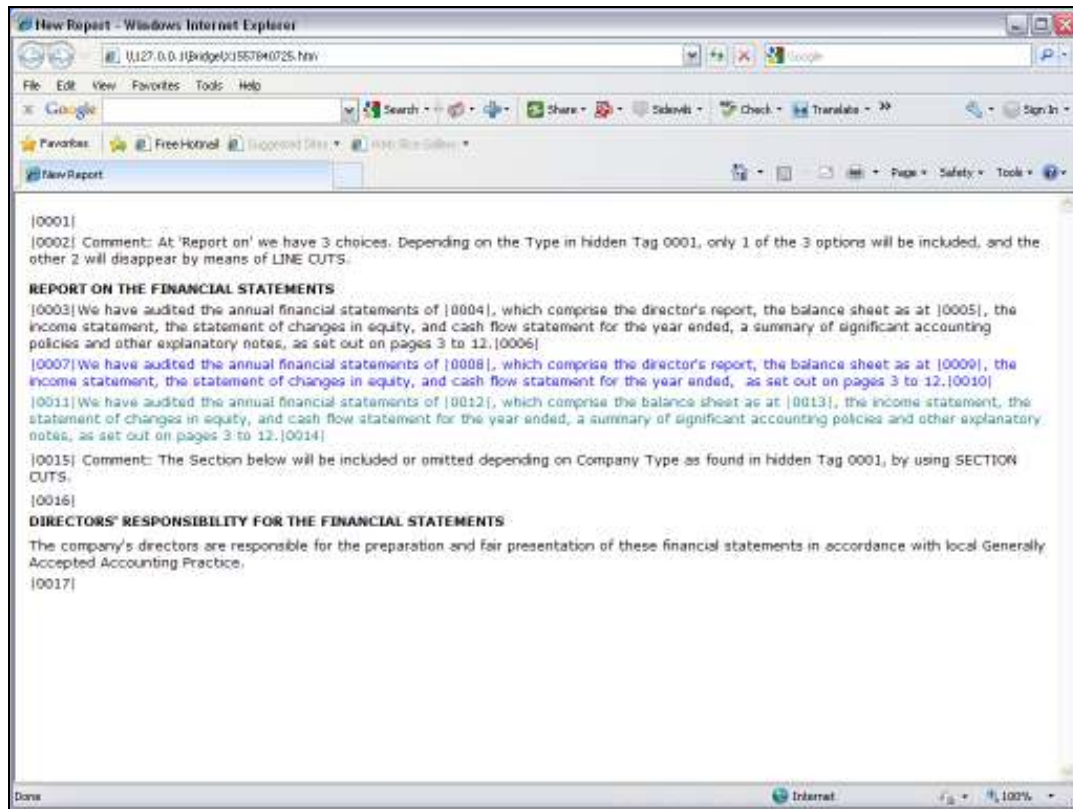
Slide 1

Slide notes: In this Layout we have a Comment that says that the Section below is conditional, and may be suppressed, or as we say, may be CUT. We do this with Section Cut Tags.



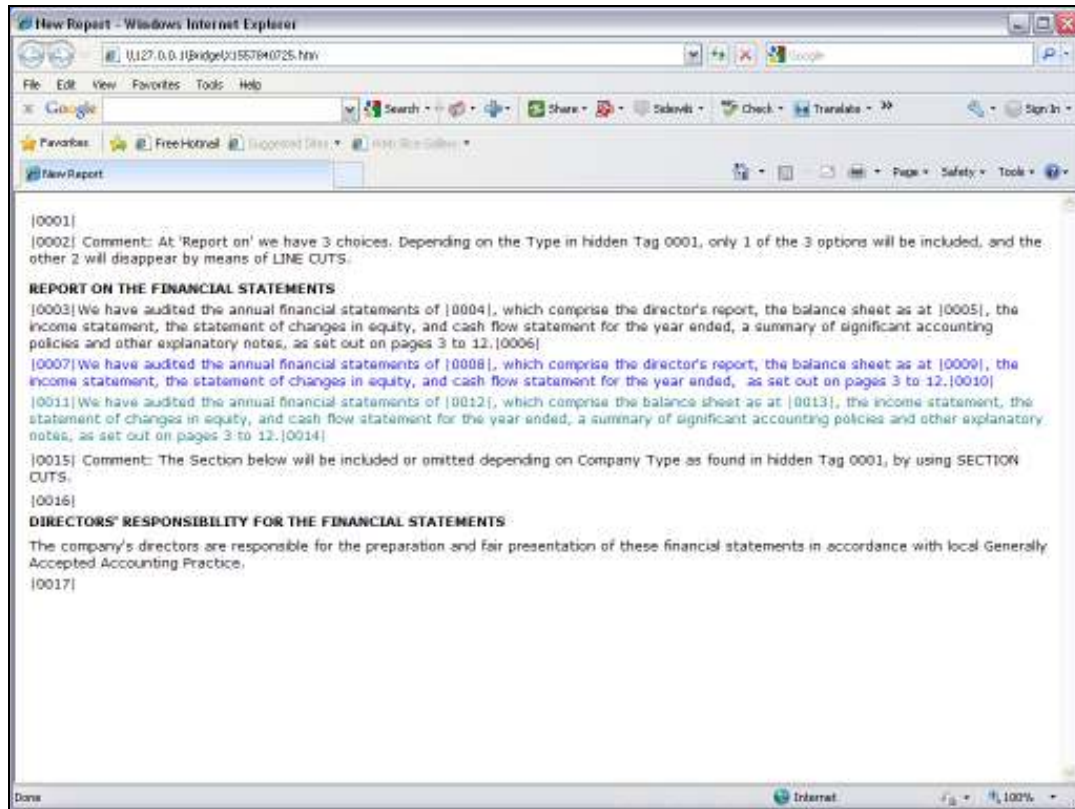
Slide 2

Slide notes: Section Cuts are always used in pairs of 2 Tags, 1 of which is at the beginning and the other at the end of the Section to cut. A Section is not a line, and can include multiple lines.



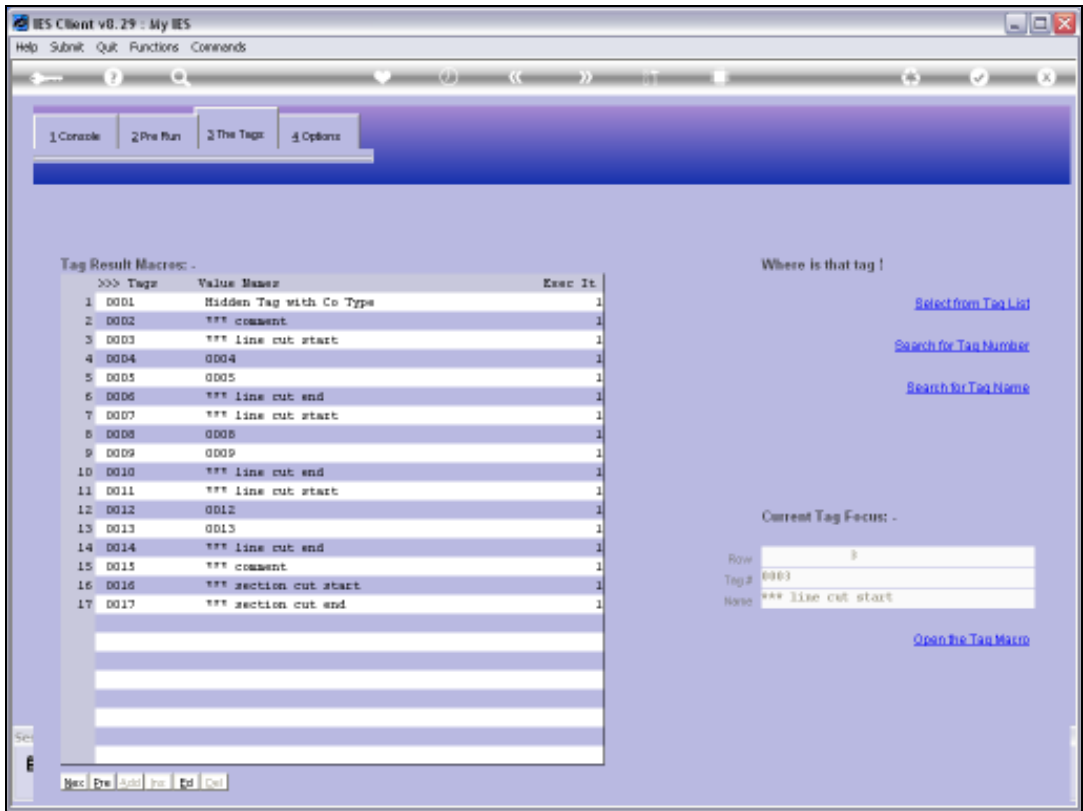
Slide 3

Slide notes:

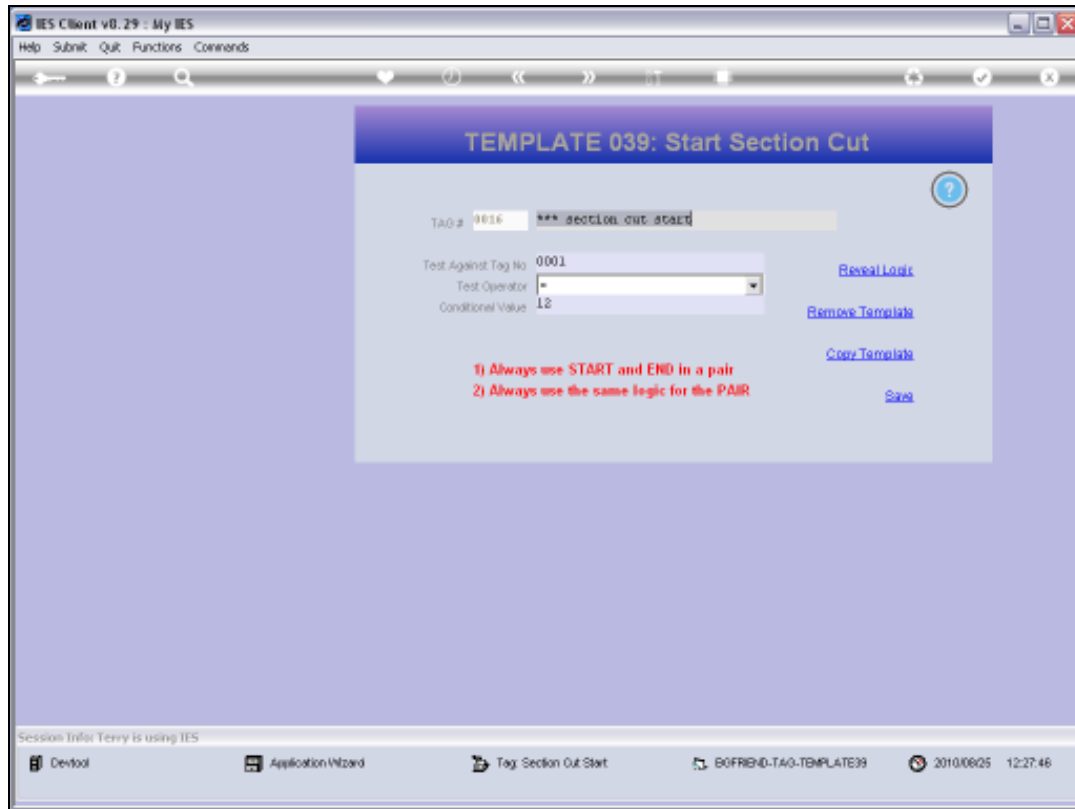


Slide 4

Slide notes:

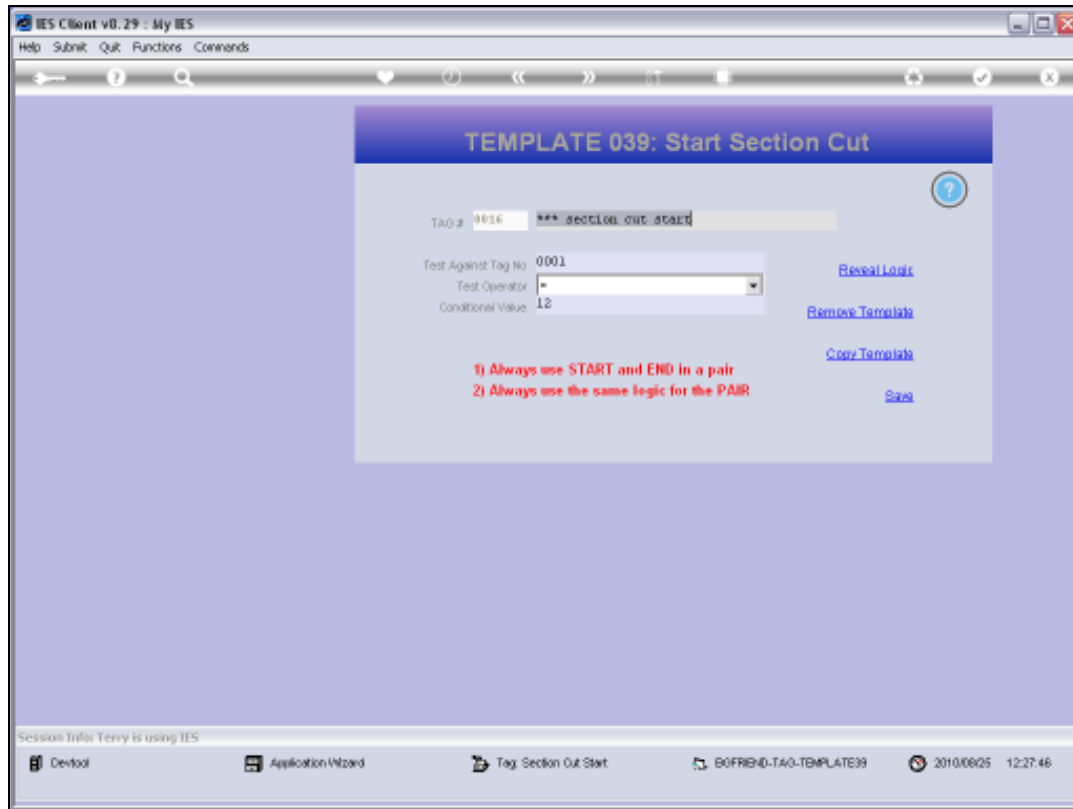


Slide 5
Slide notes:



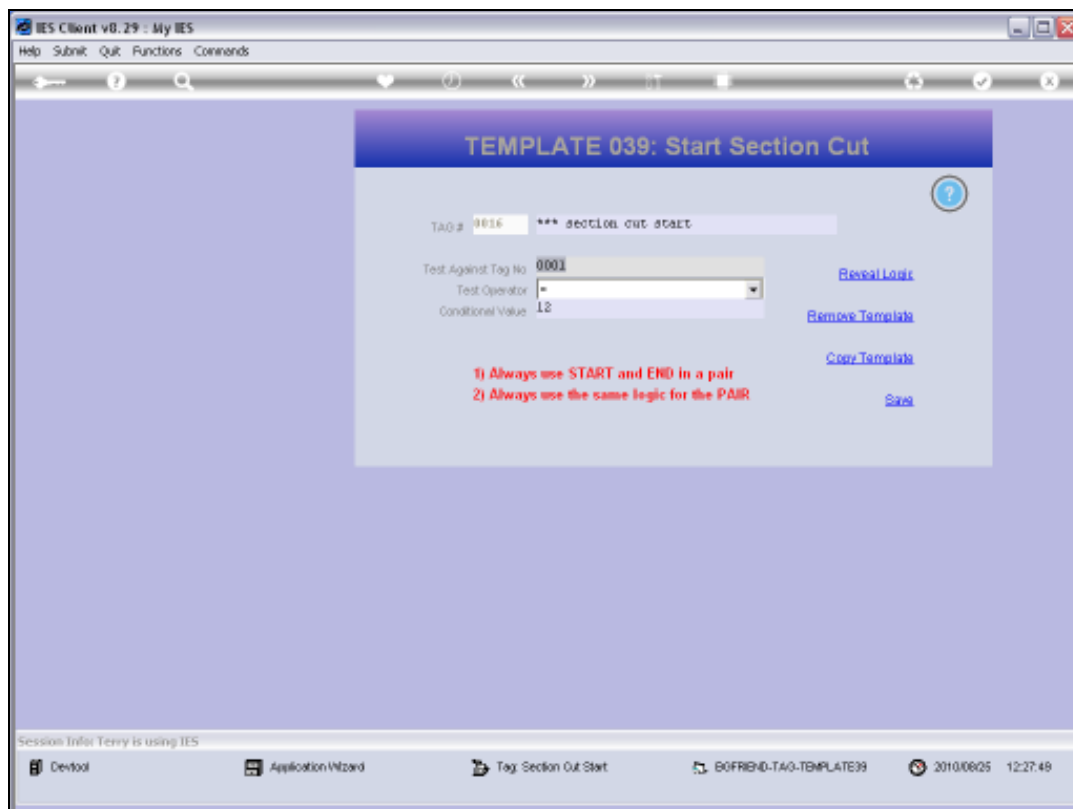
Slide 6

Slide notes: A Section Cut always compares a stated Value against the Value found in another Tag, and applies a selected operator. If the condition is true, then the Cut takes effect.



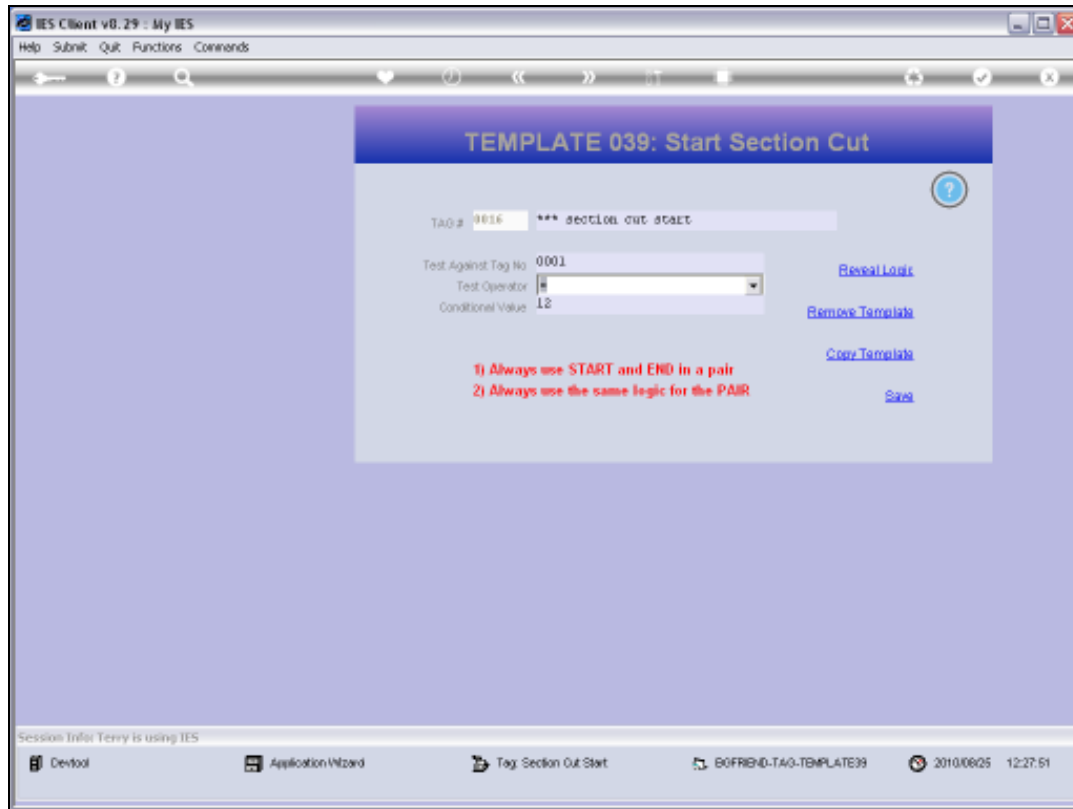
Slide 7

Slide notes:



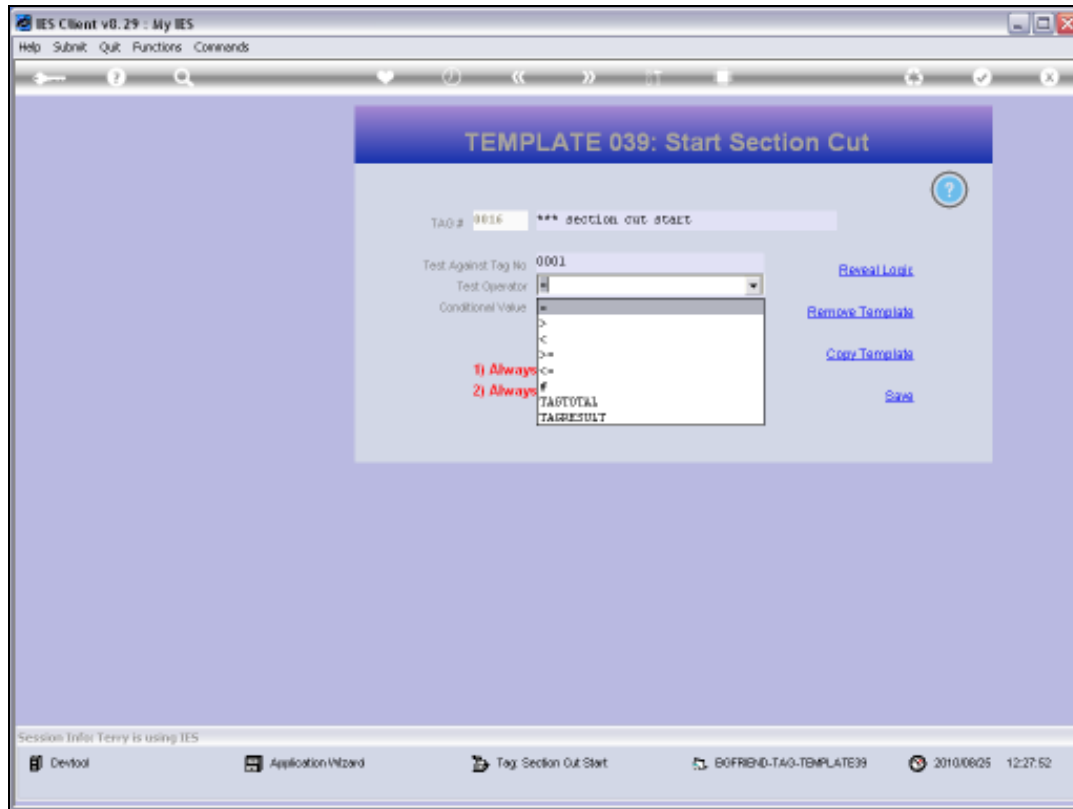
Slide 8

Slide notes:



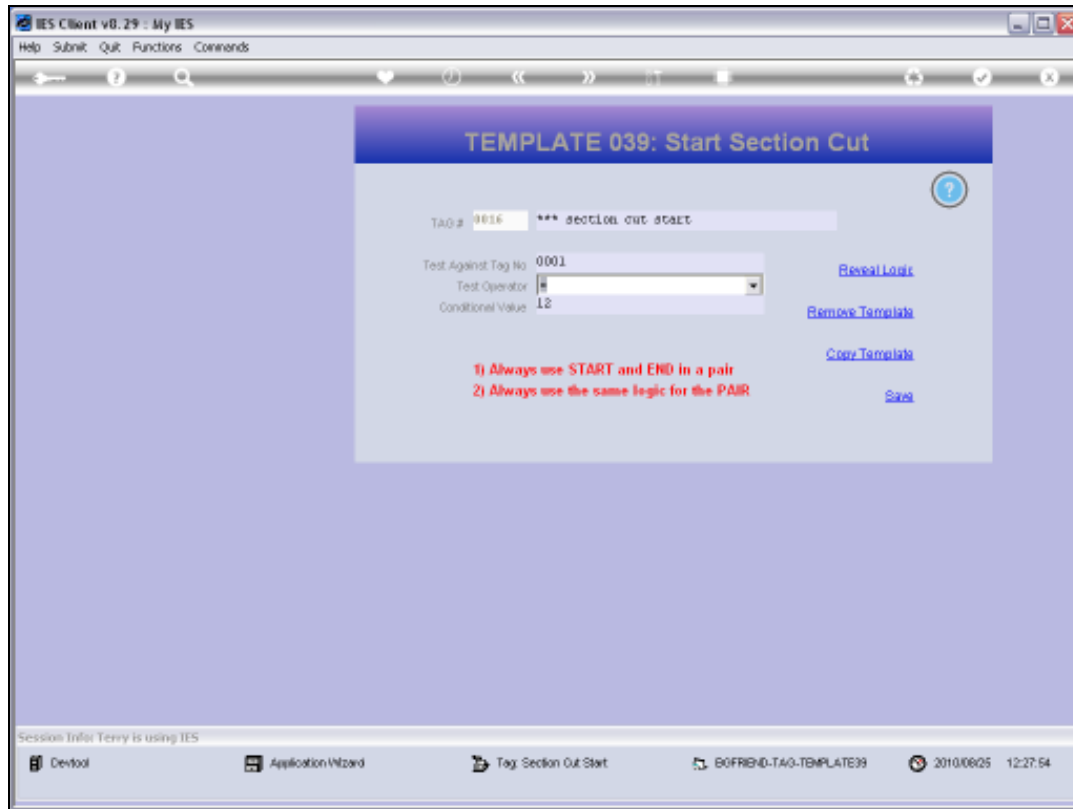
Slide 9

Slide notes:



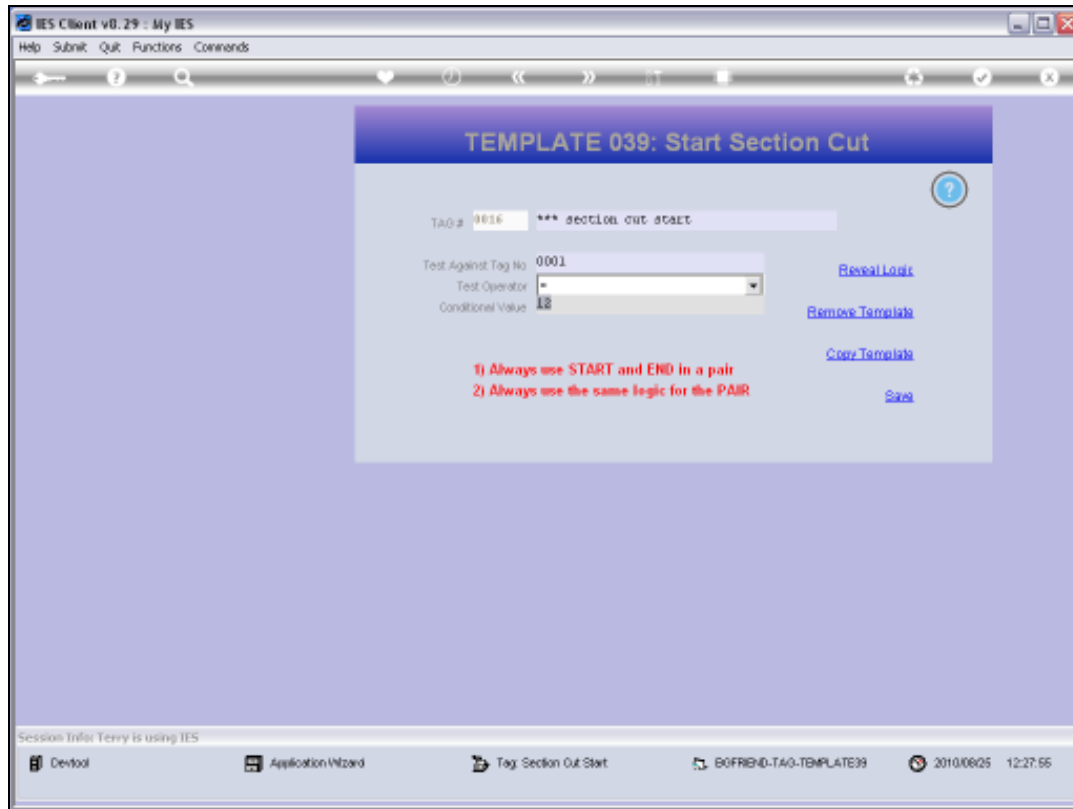
Slide 10

Slide notes:



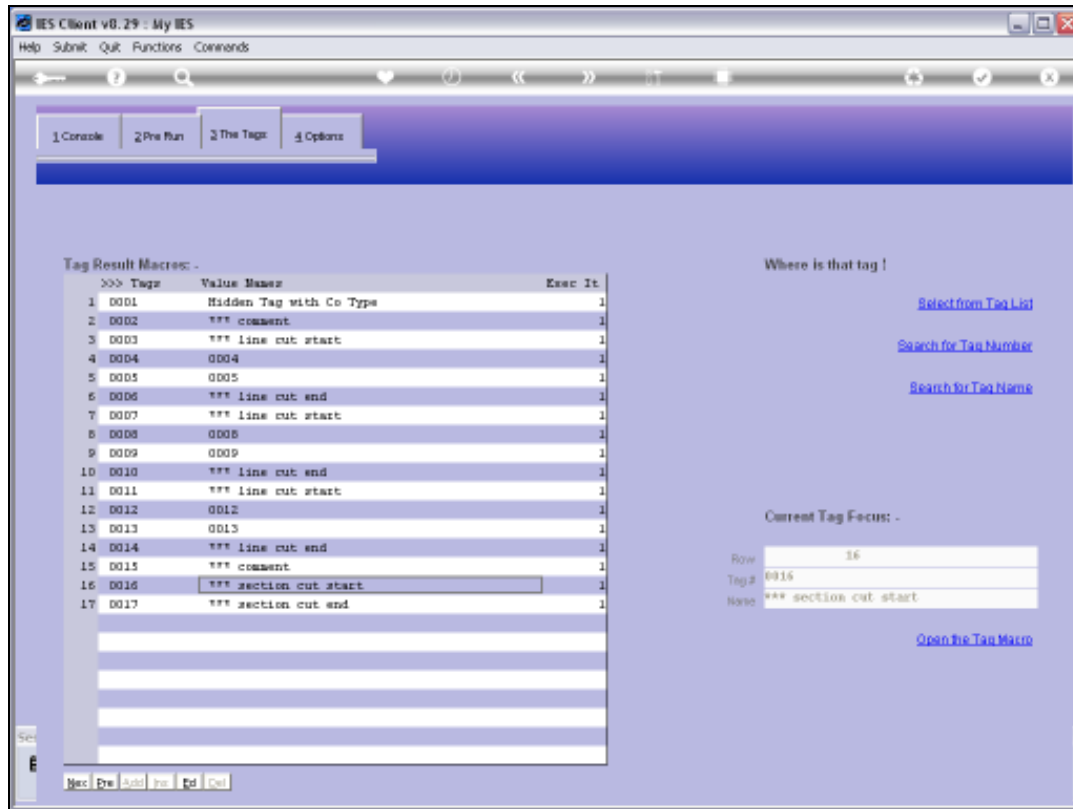
Slide 11

Slide notes:



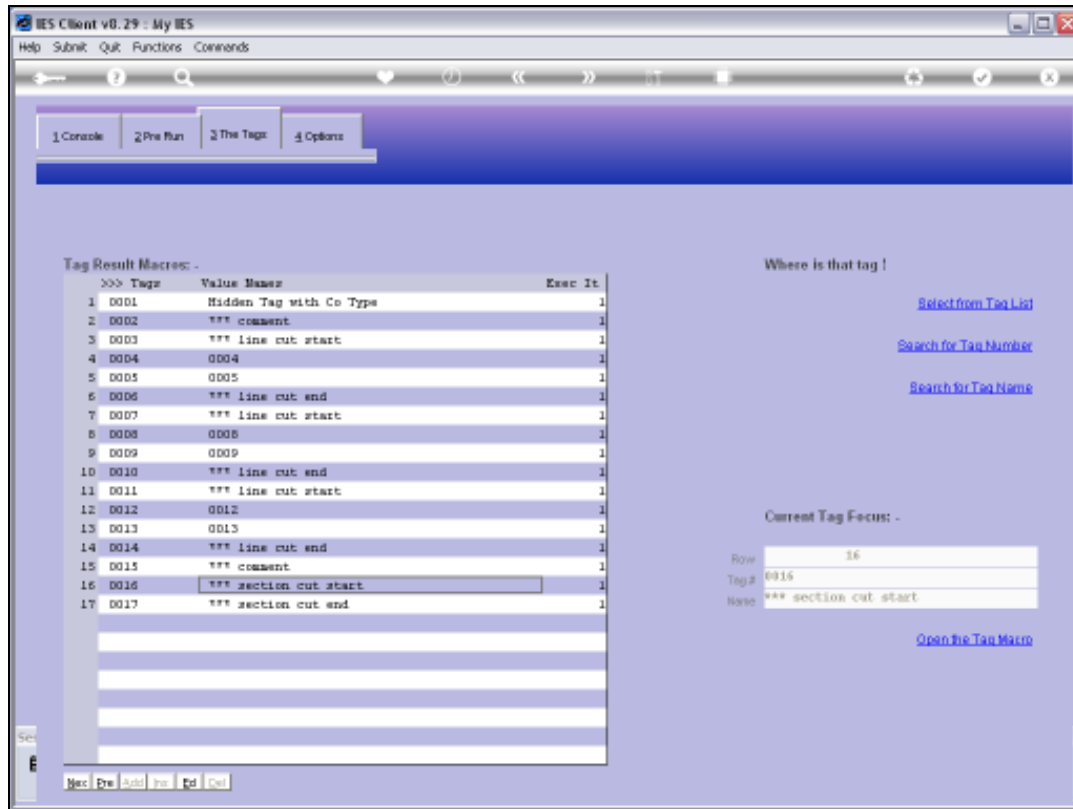
Slide 12

Slide notes:



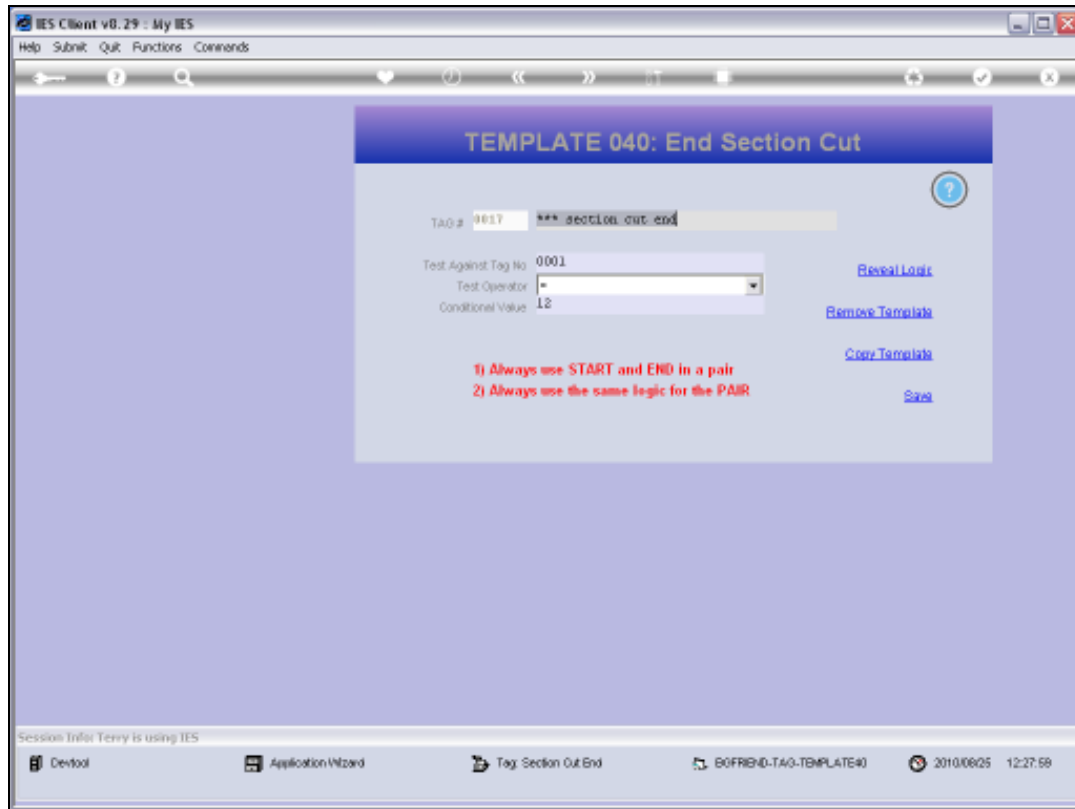
Slide 13

Slide notes:



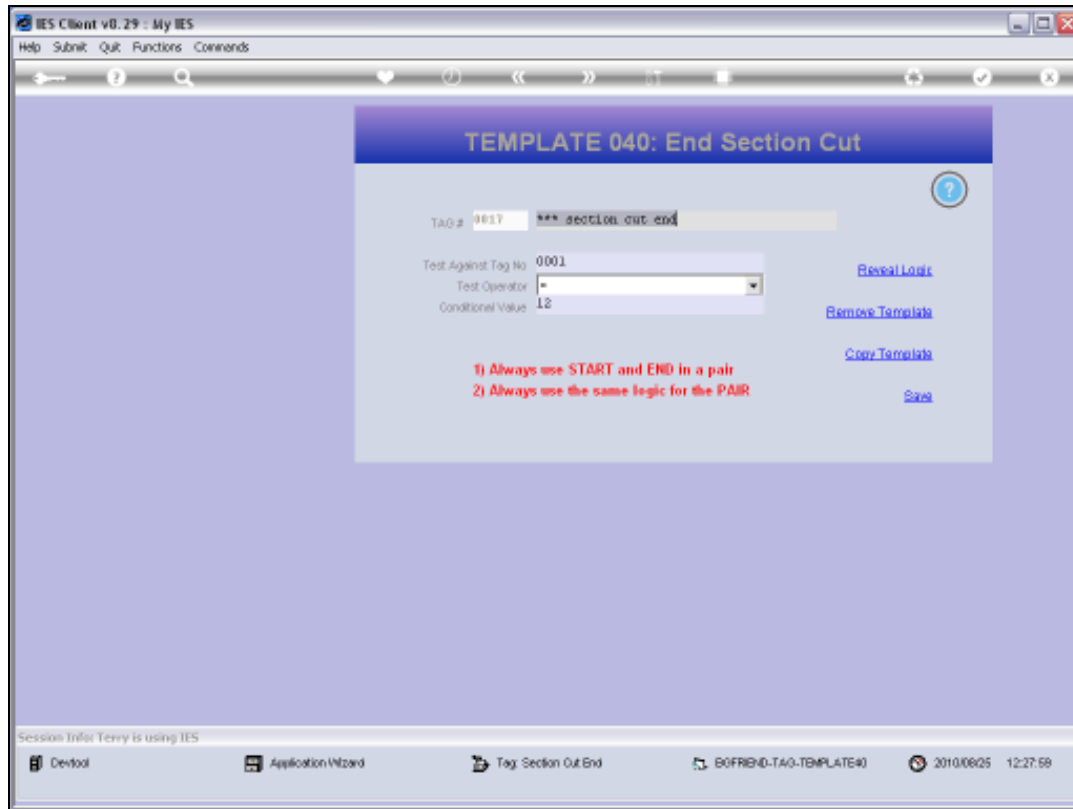
Slide 14

Slide notes:



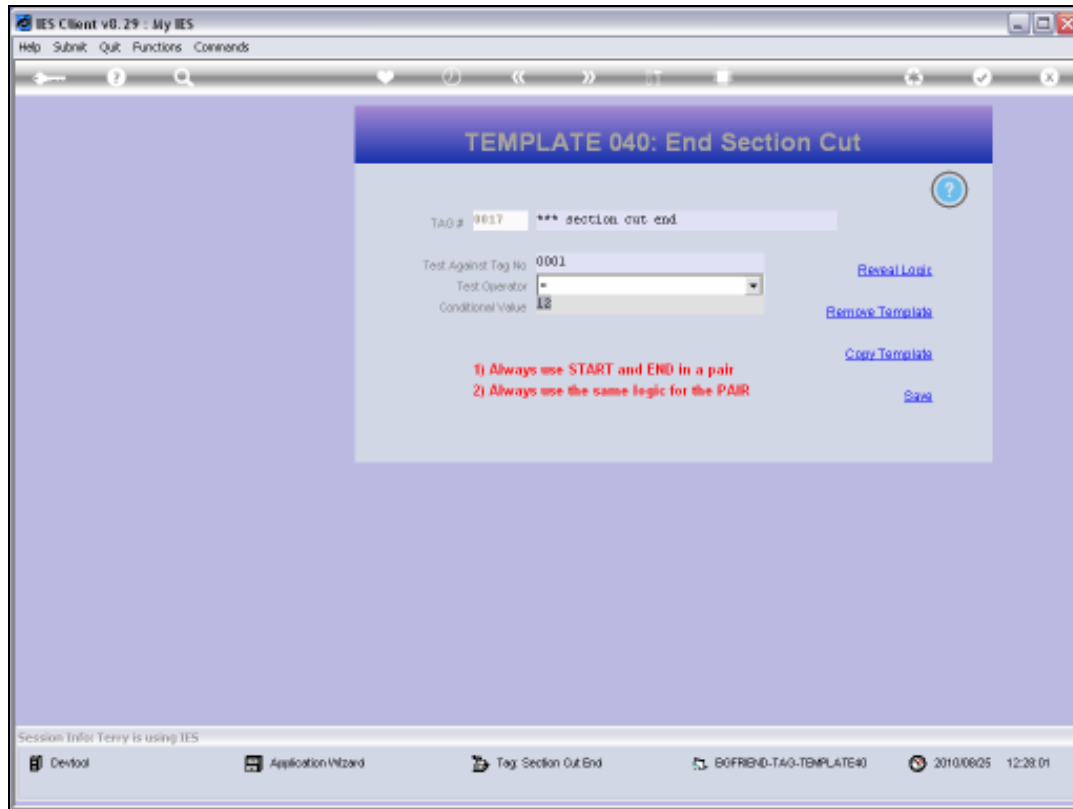
Slide 15

Slide notes: The test for the End Section Cut Tag must always be the same as for the Start Tag. In this case, if the Value found in Tag 0001 is 12, then the Cut will take place.



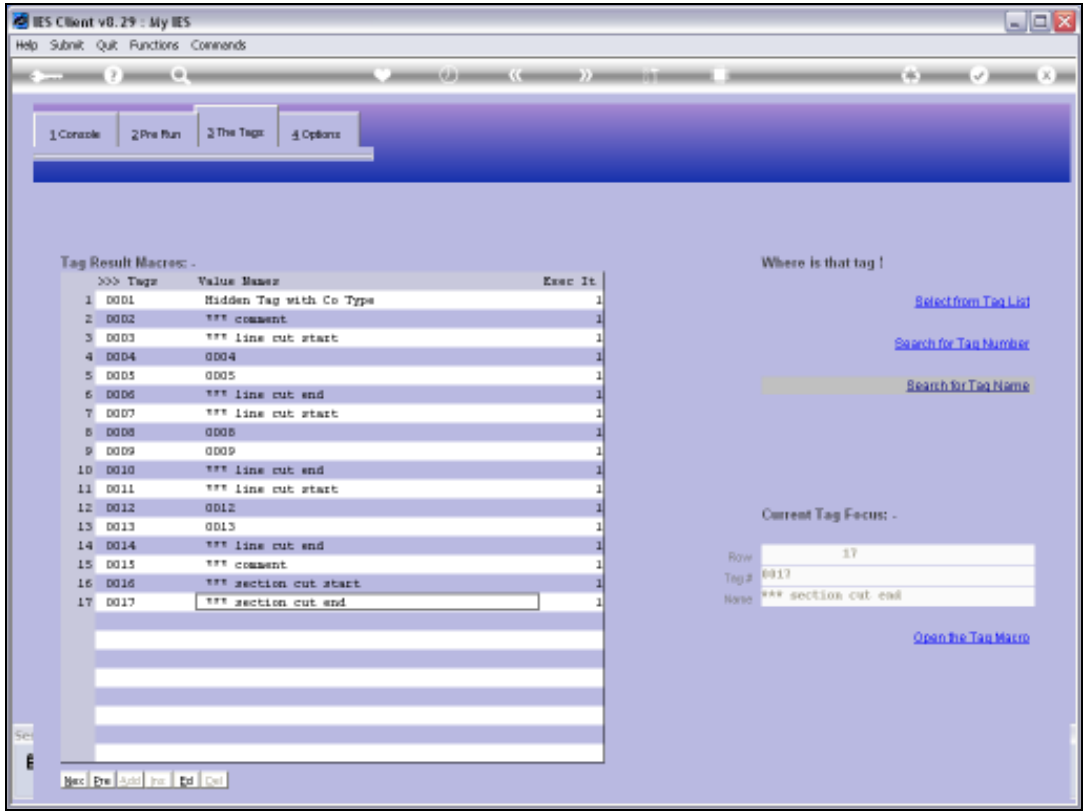
Slide 16

Slide notes:

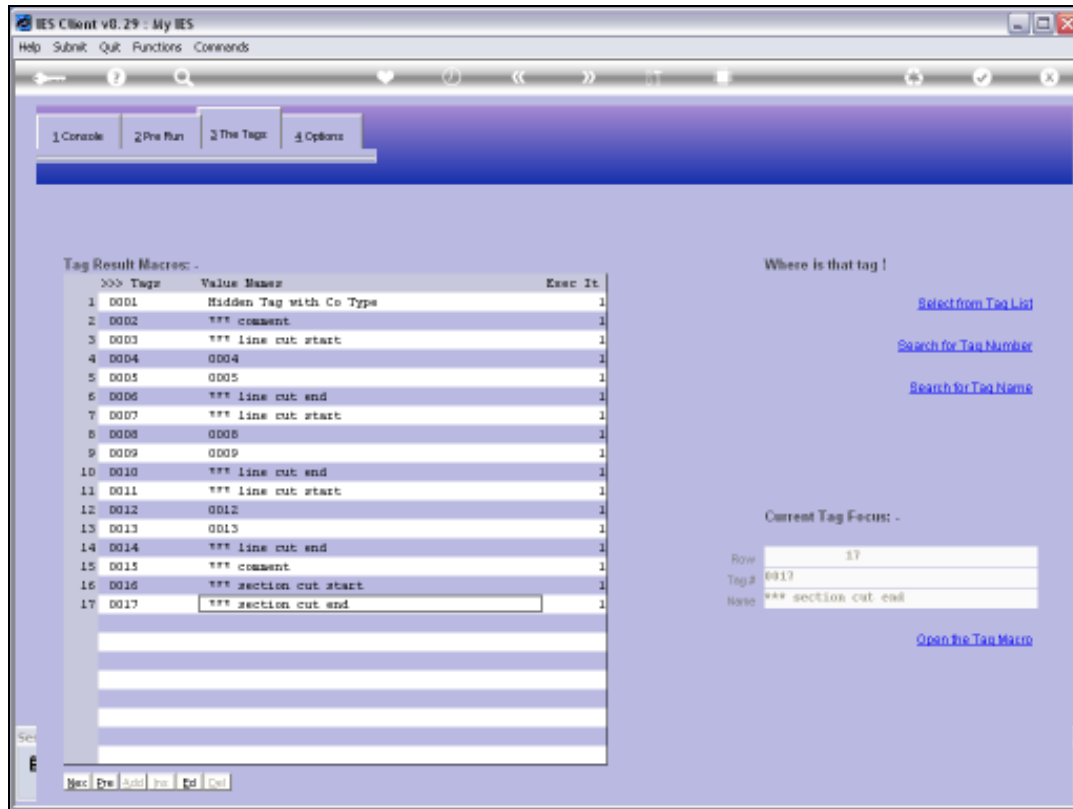


Slide 17

Slide notes:

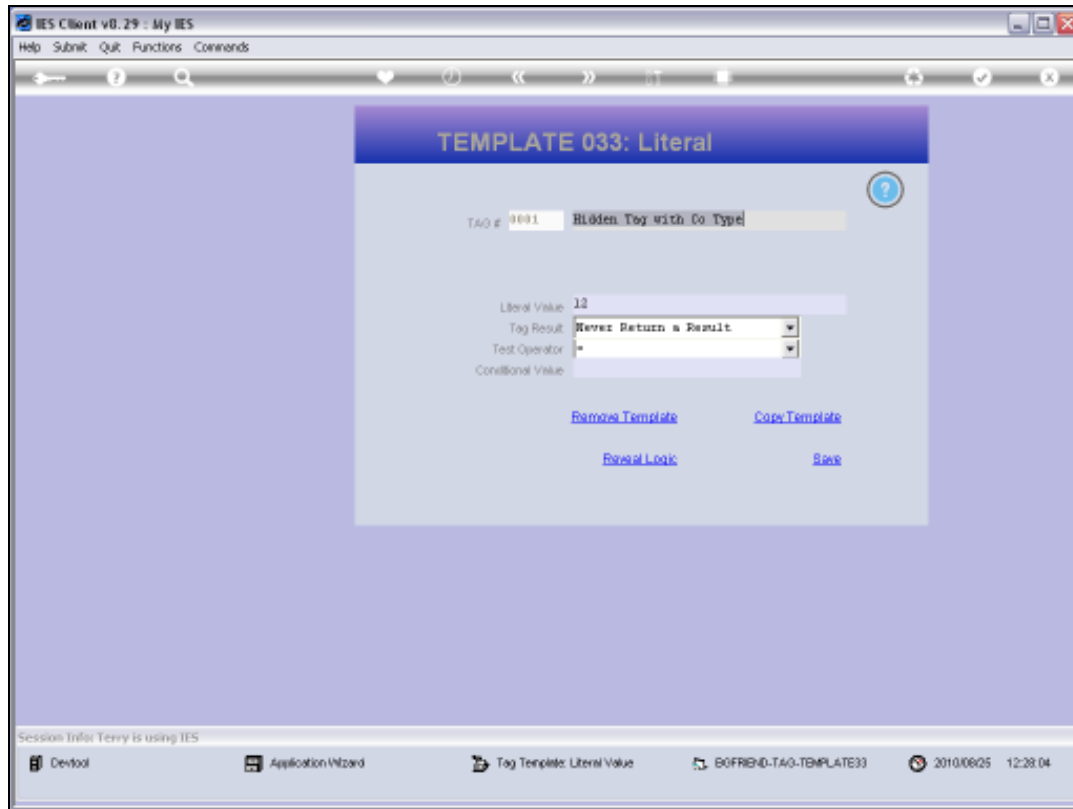


Slide 18
Slide notes:



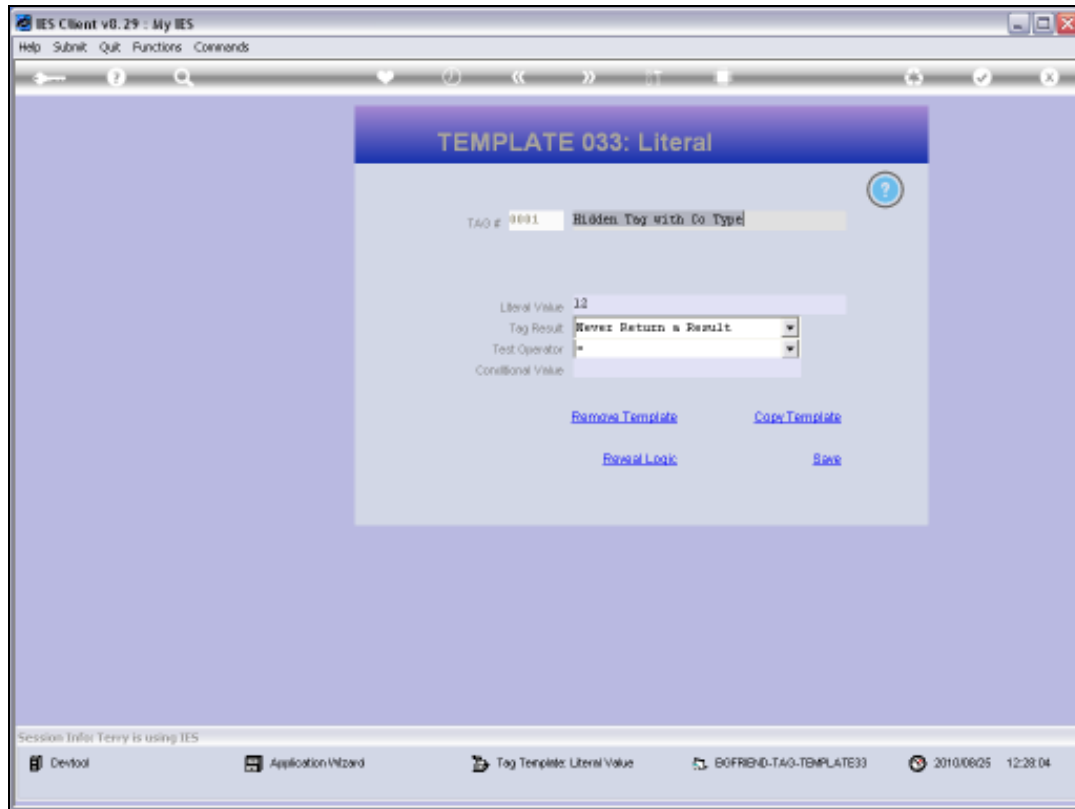
Slide 19

Slide notes:



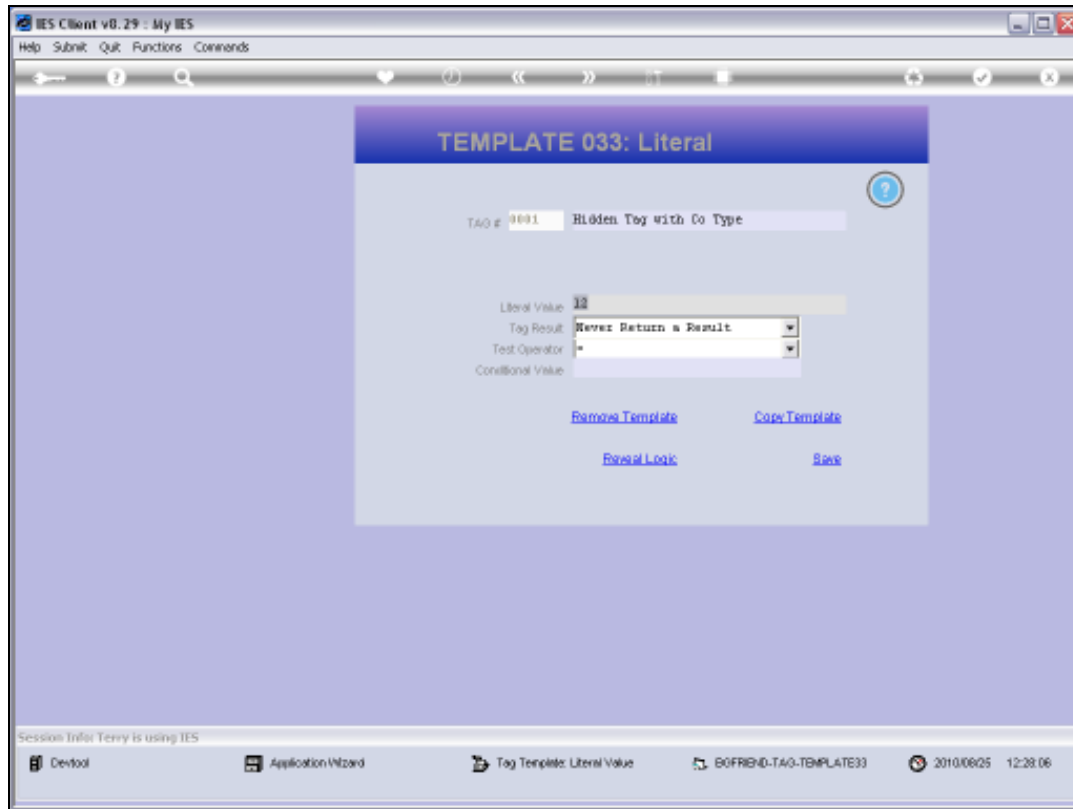
Slide 20

Slide notes:



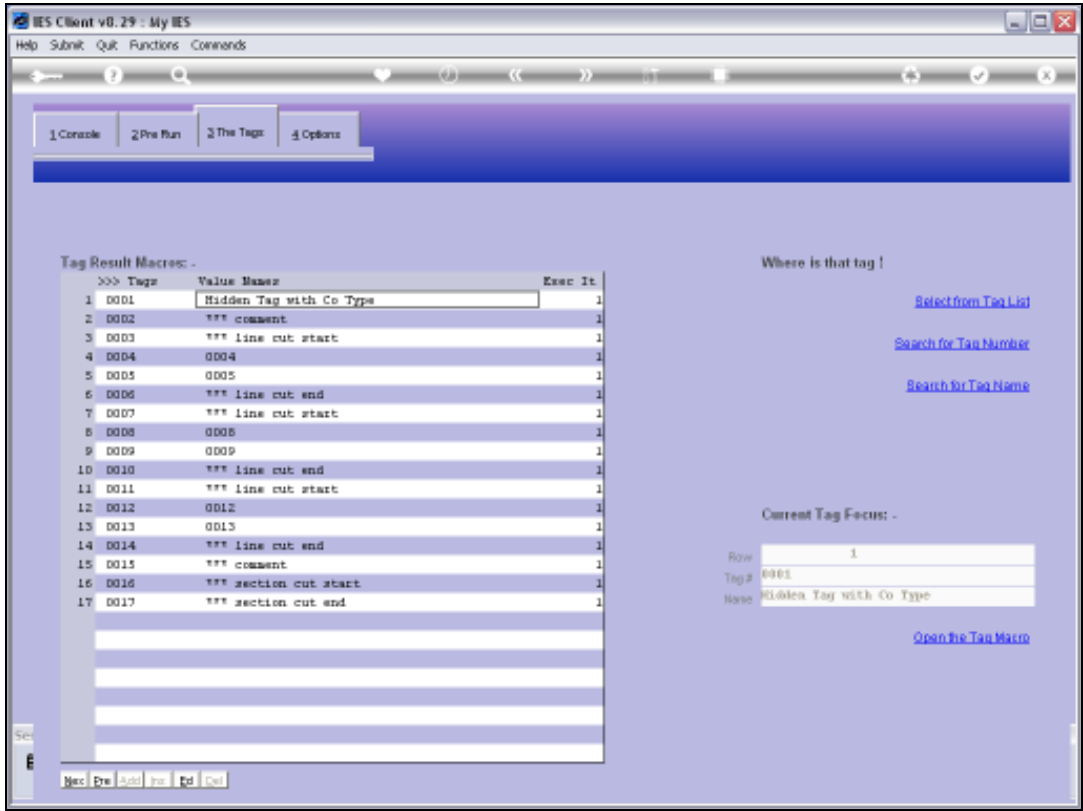
Slide 21

Slide notes: Since the Value of Tag 1 is 12 at the moment, we can expect the Section Cut to take effect.

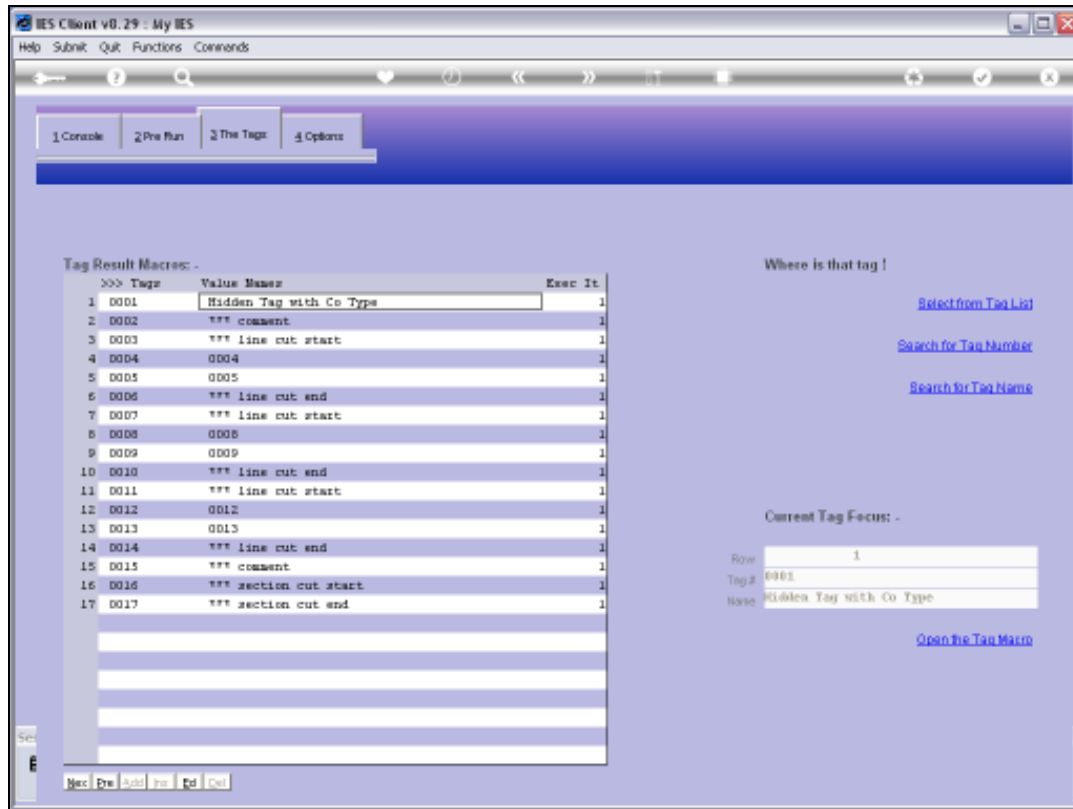


Slide 22

Slide notes:



Slide 23
Slide notes:



Slide 24

Slide notes:



Slide 25

Slide notes:



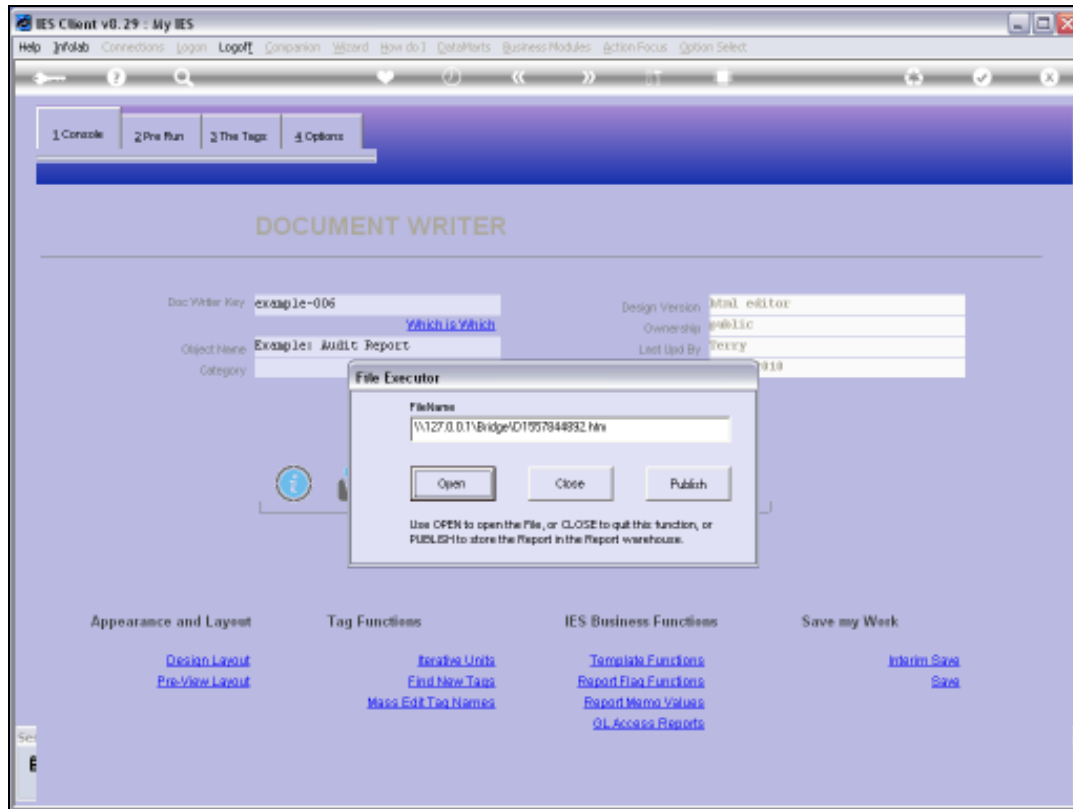
Slide 26

Slide notes:



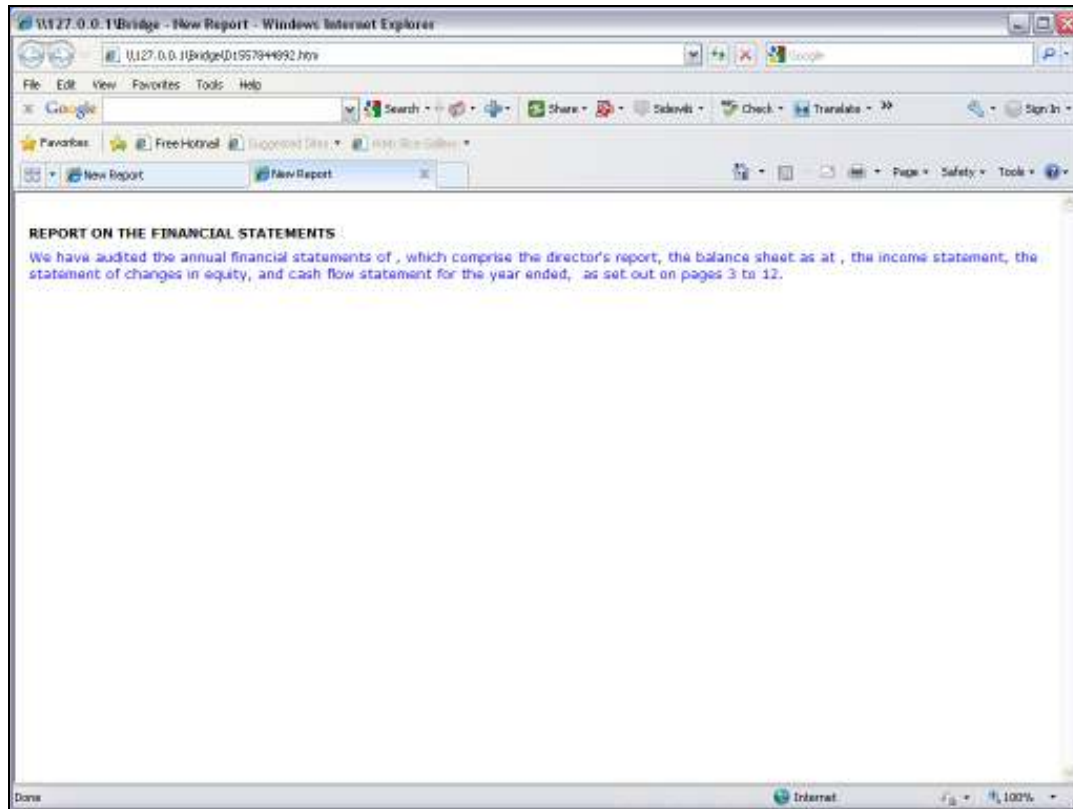
Slide 27

Slide notes:



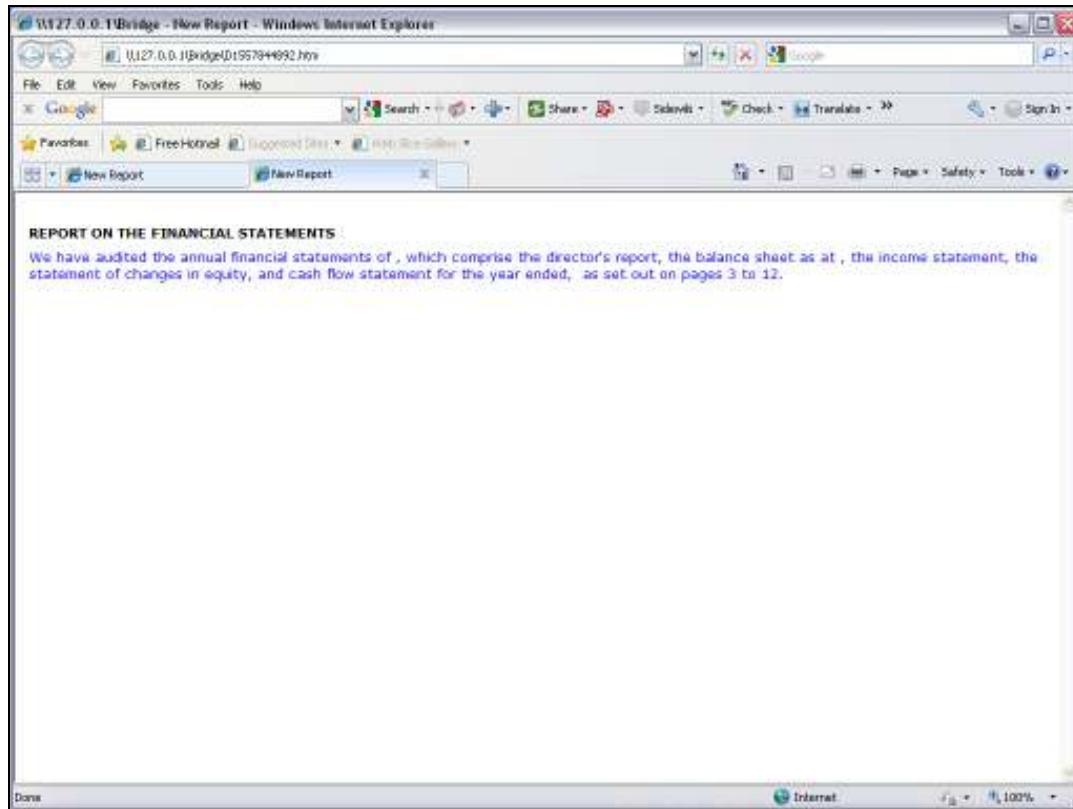
Slide 28

Slide notes:



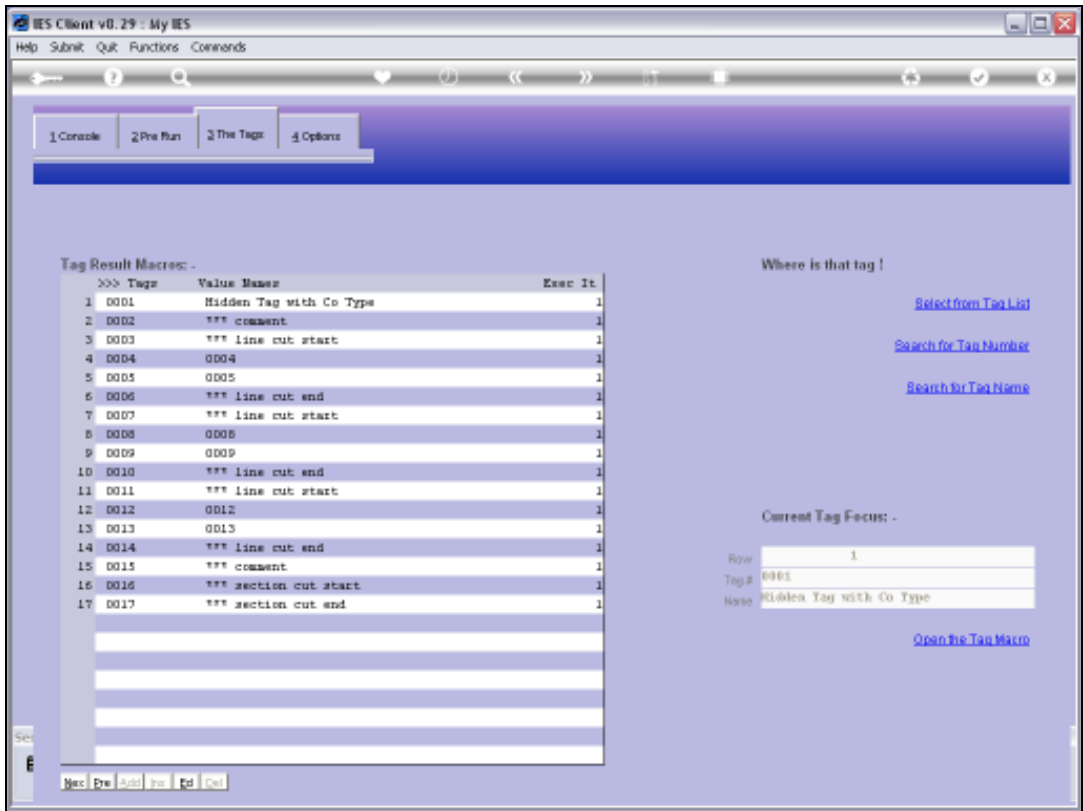
Slide 29

Slide notes: The Section is missing. In other words, it was cut.

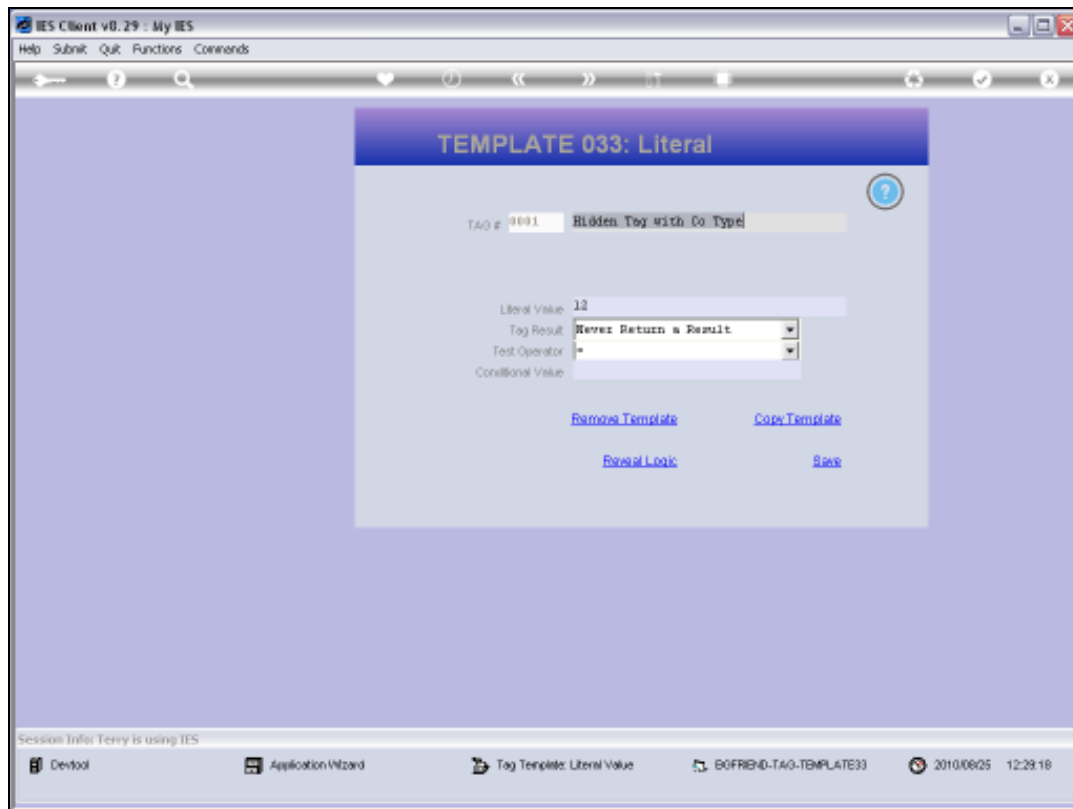


Slide 30

Slide notes:

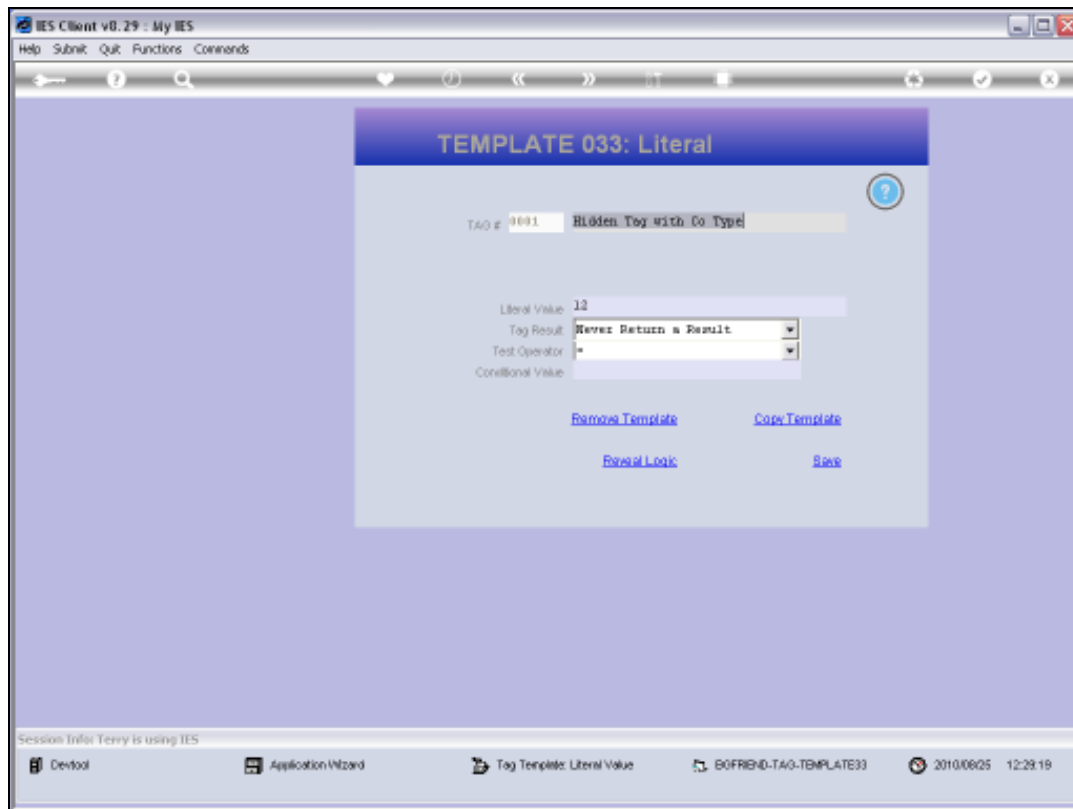


Slide 31
Slide notes:



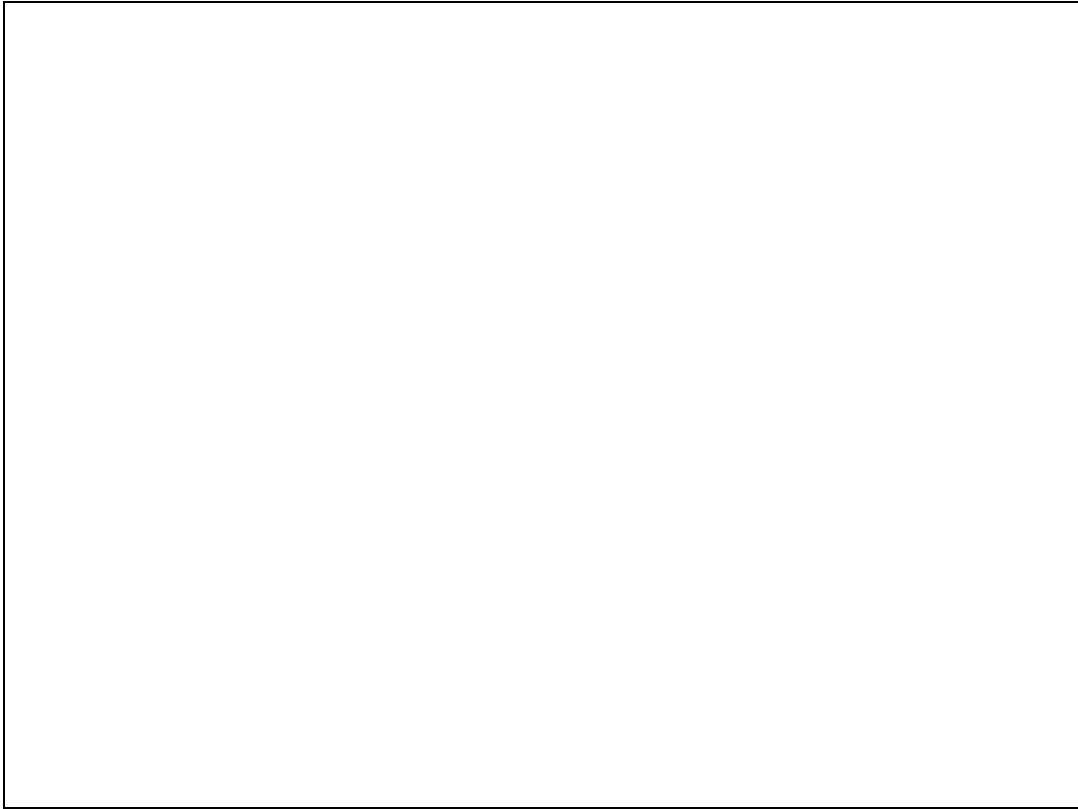
Slide 32

Slide notes:



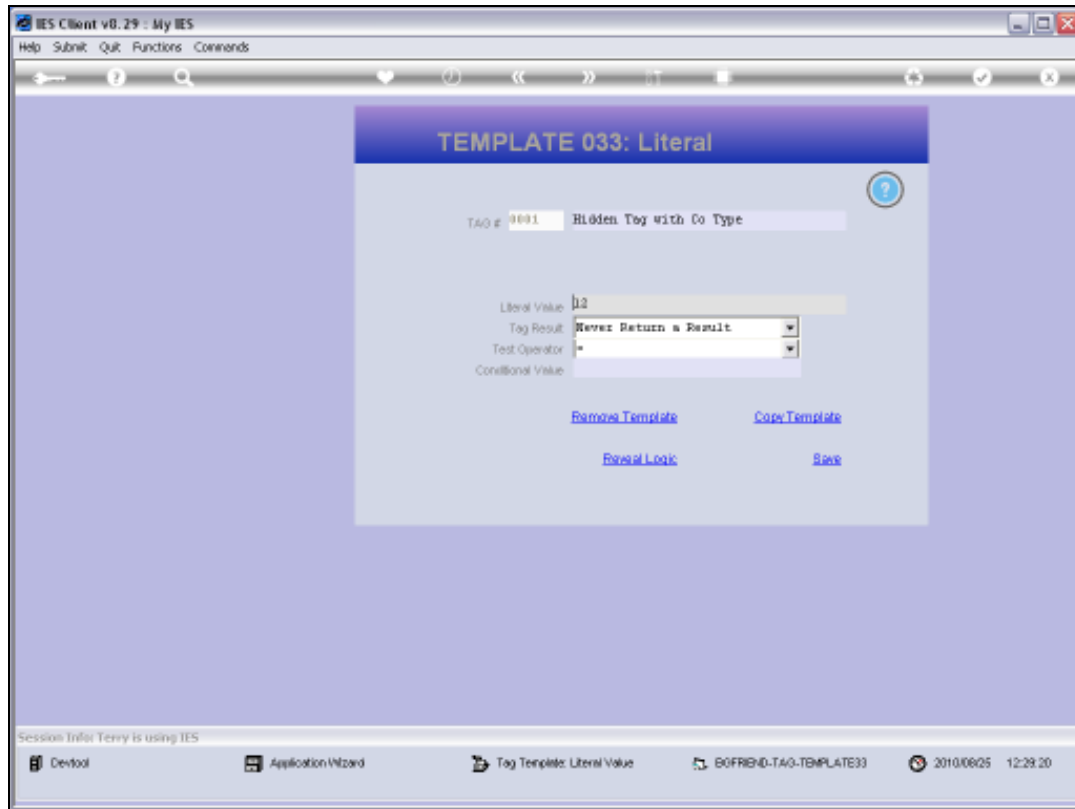
Slide 33

Slide notes:



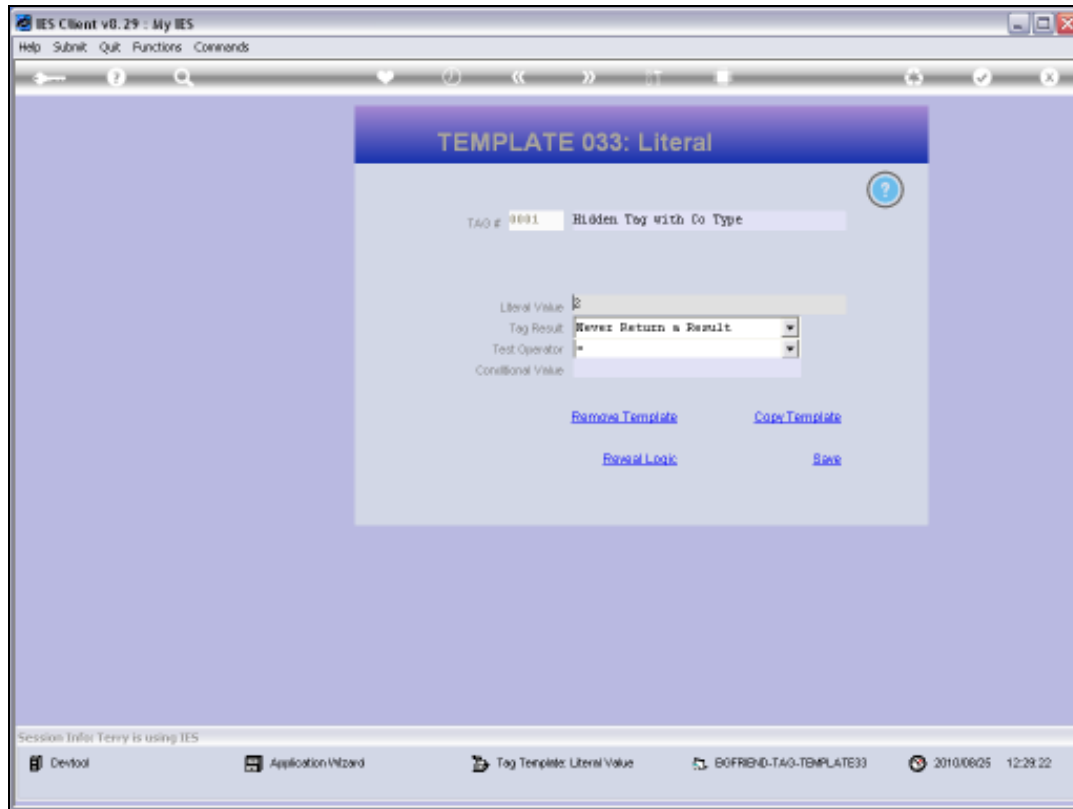
Slide 34

Slide notes:



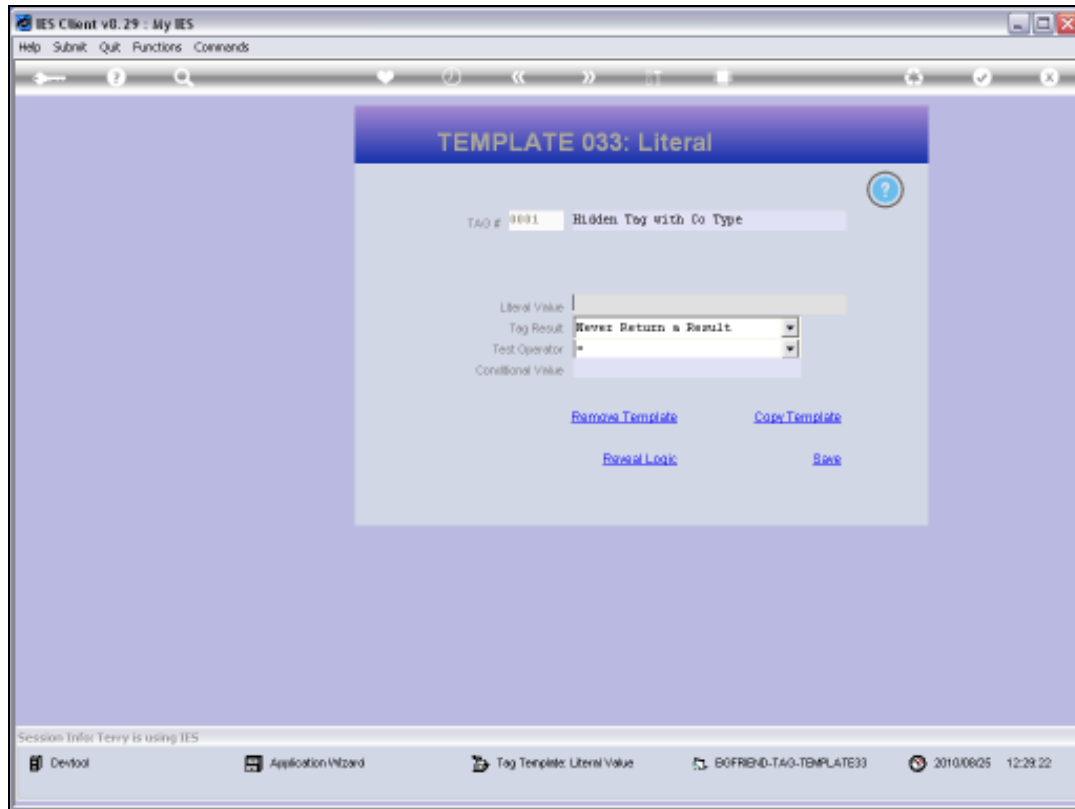
Slide 35

Slide notes:



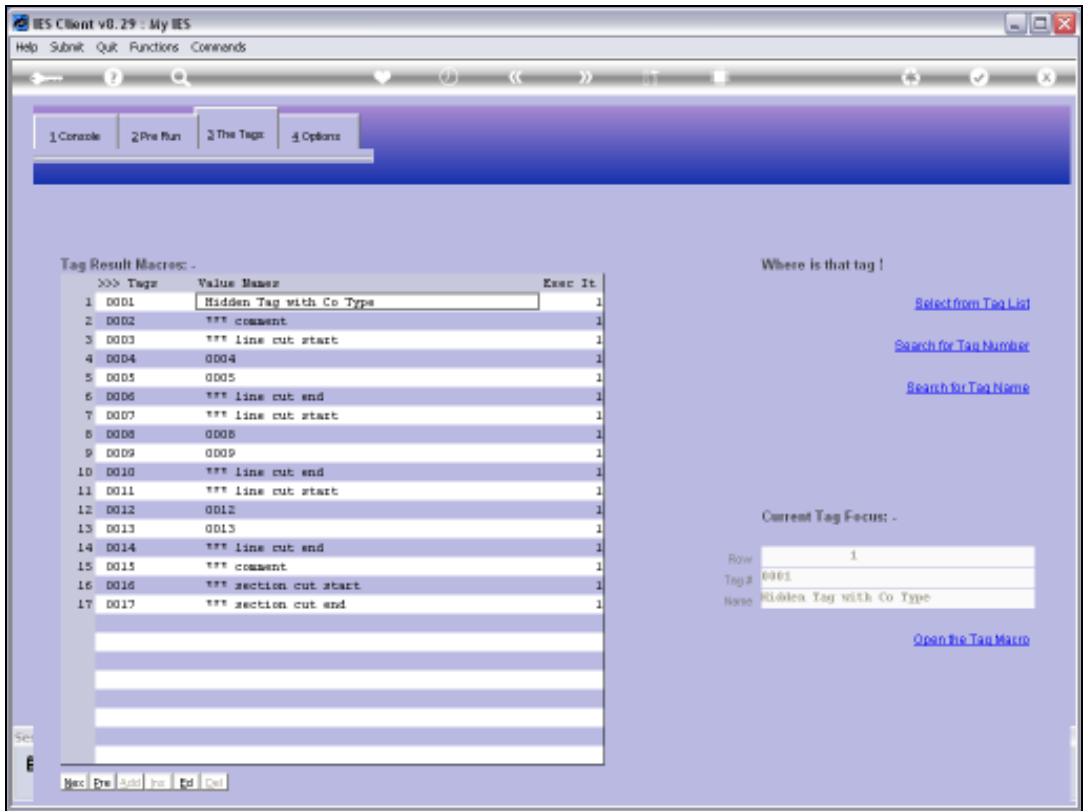
Slide 36

Slide notes:

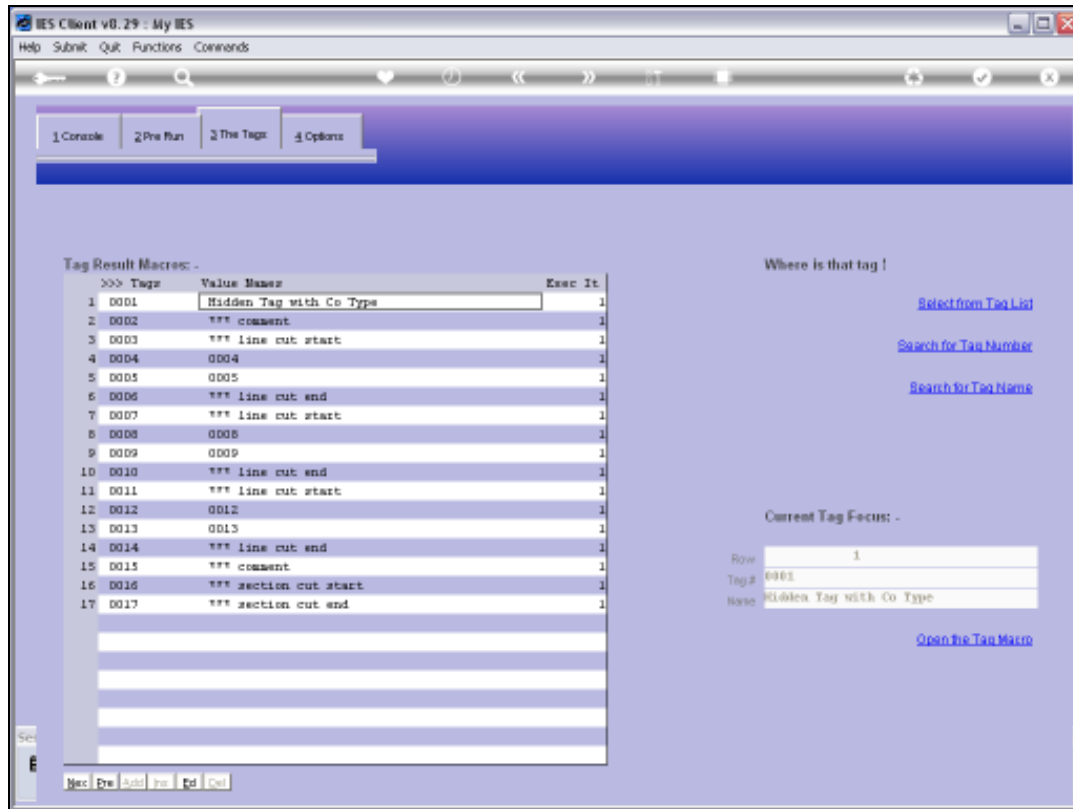


Slide 37

Slide notes: Now that we have a different Value in the Test Tag, the Cut should not happen.



Slide 38
Slide notes:



Slide 39

Slide notes:



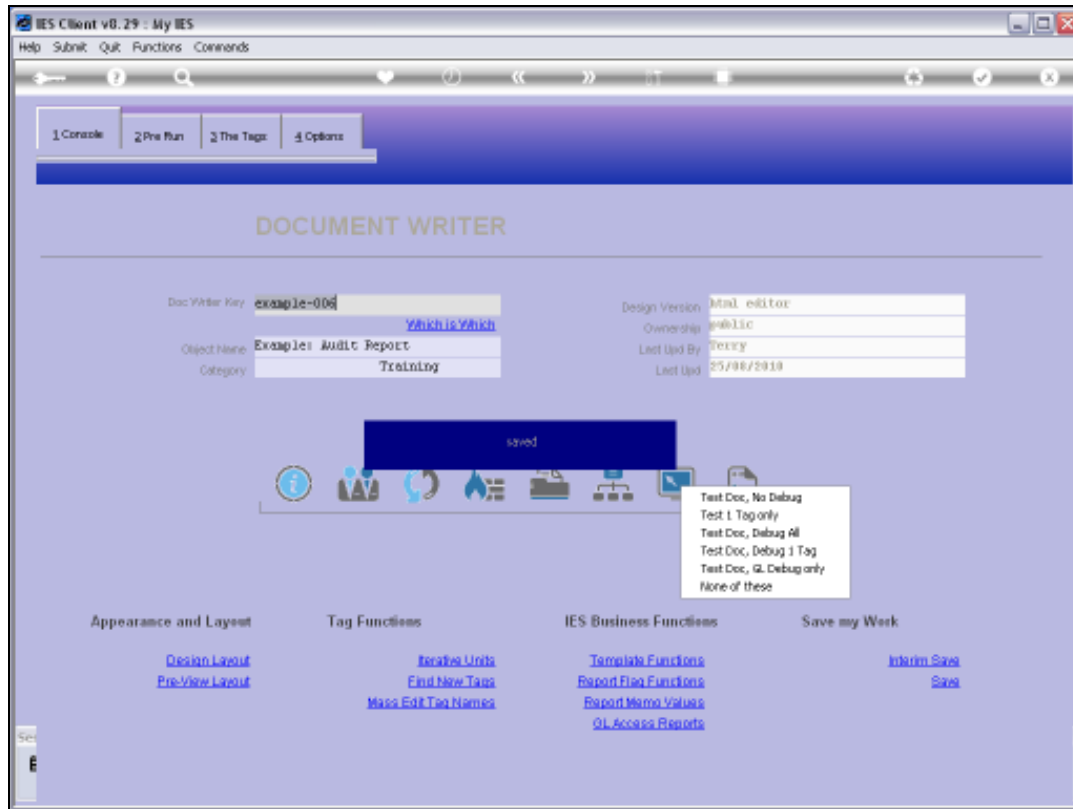
Slide 40

Slide notes:



Slide 41

Slide notes:



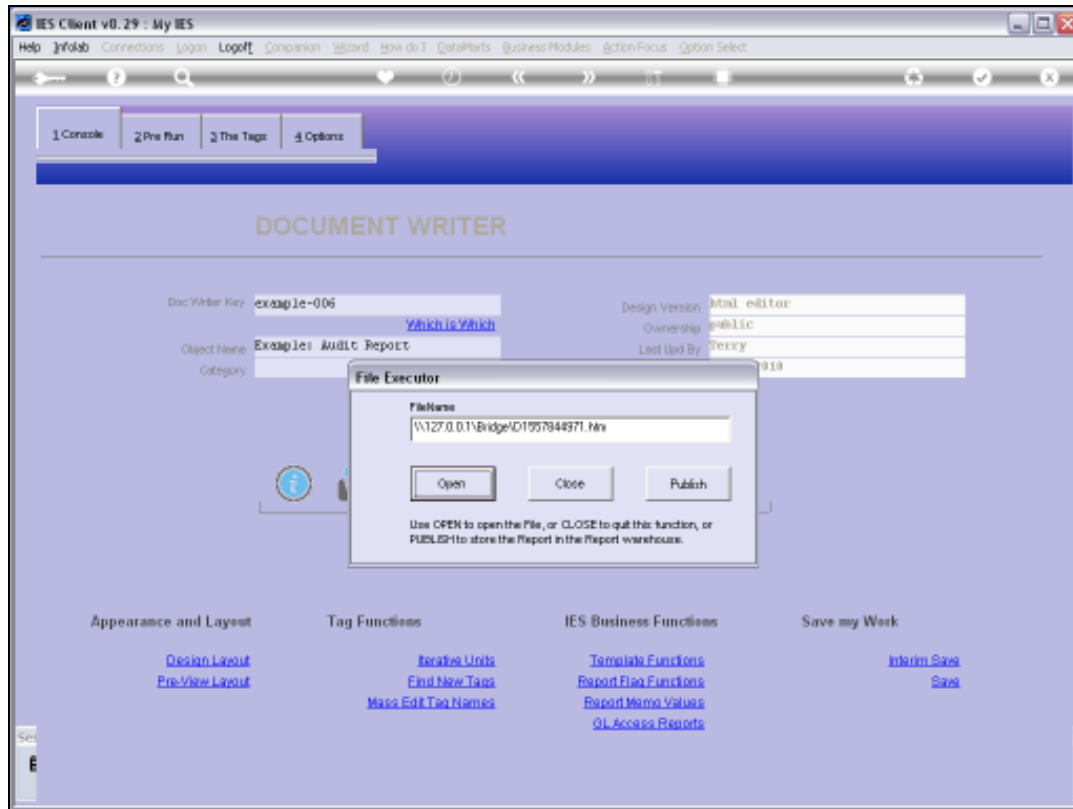
Slide 42

Slide notes:



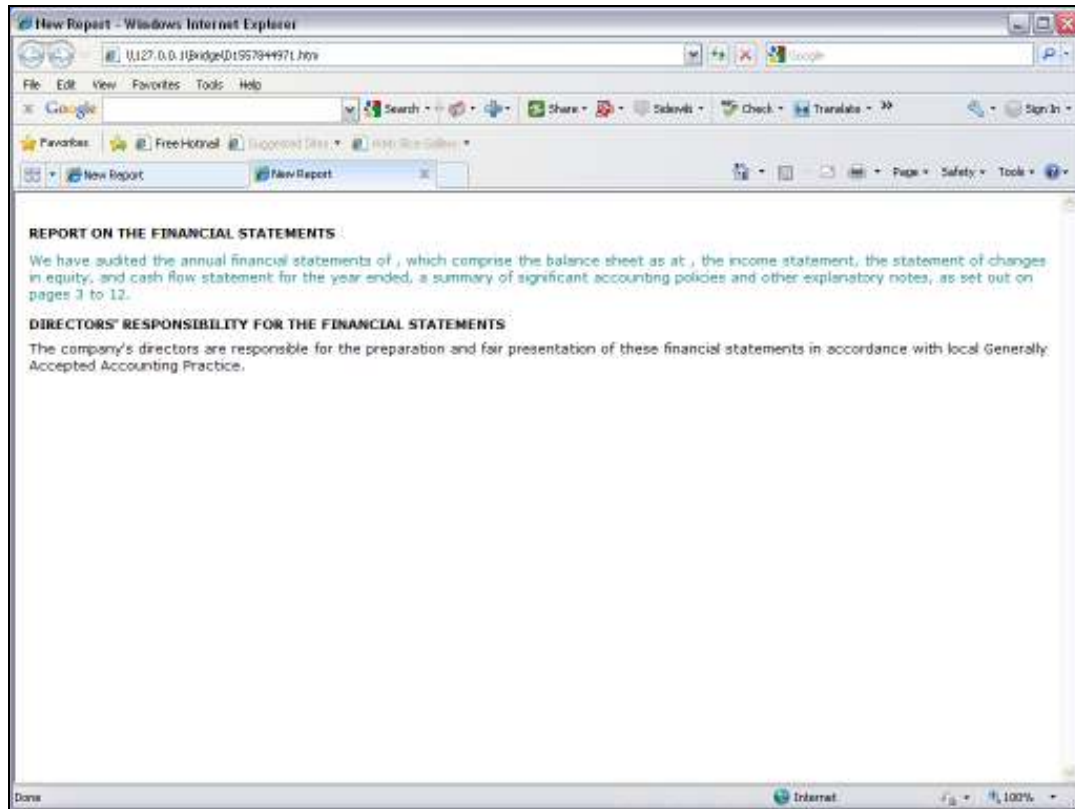
Slide 43

Slide notes:



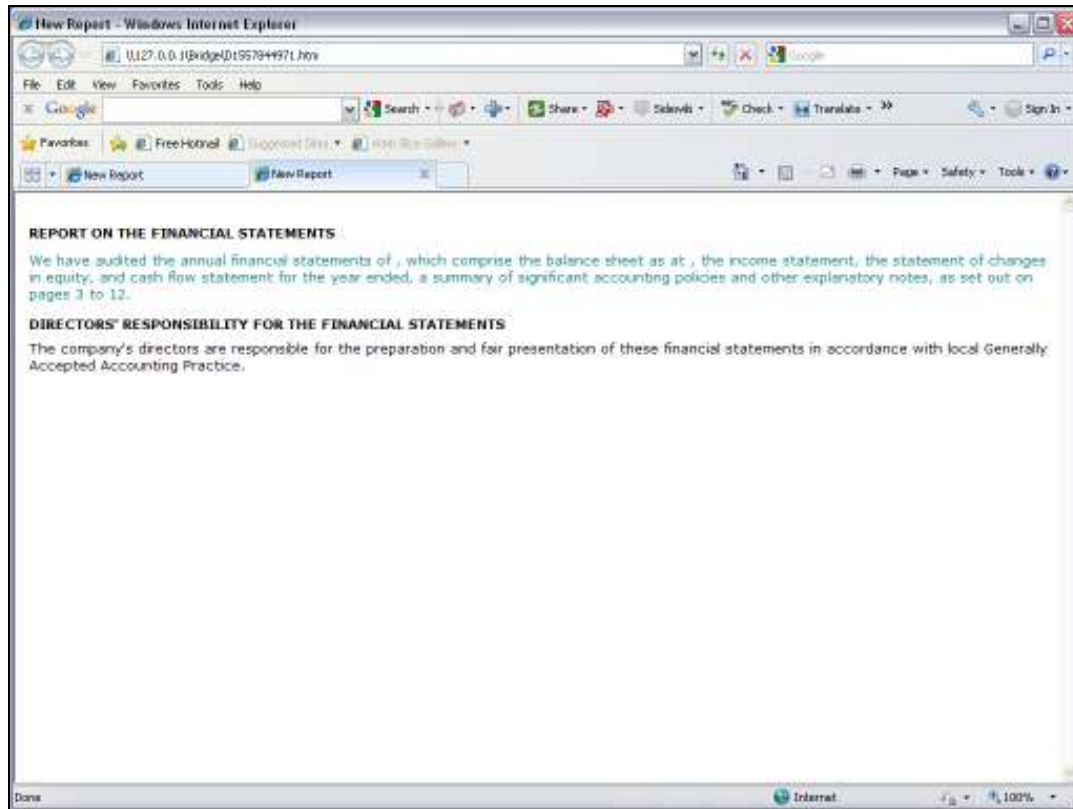
Slide 44

Slide notes:



Slide 45

Slide notes: And the Section Cut did not happen, as the Section is present. So this is an example of how we can use Section Cuts.



Slide 46

Slide notes: