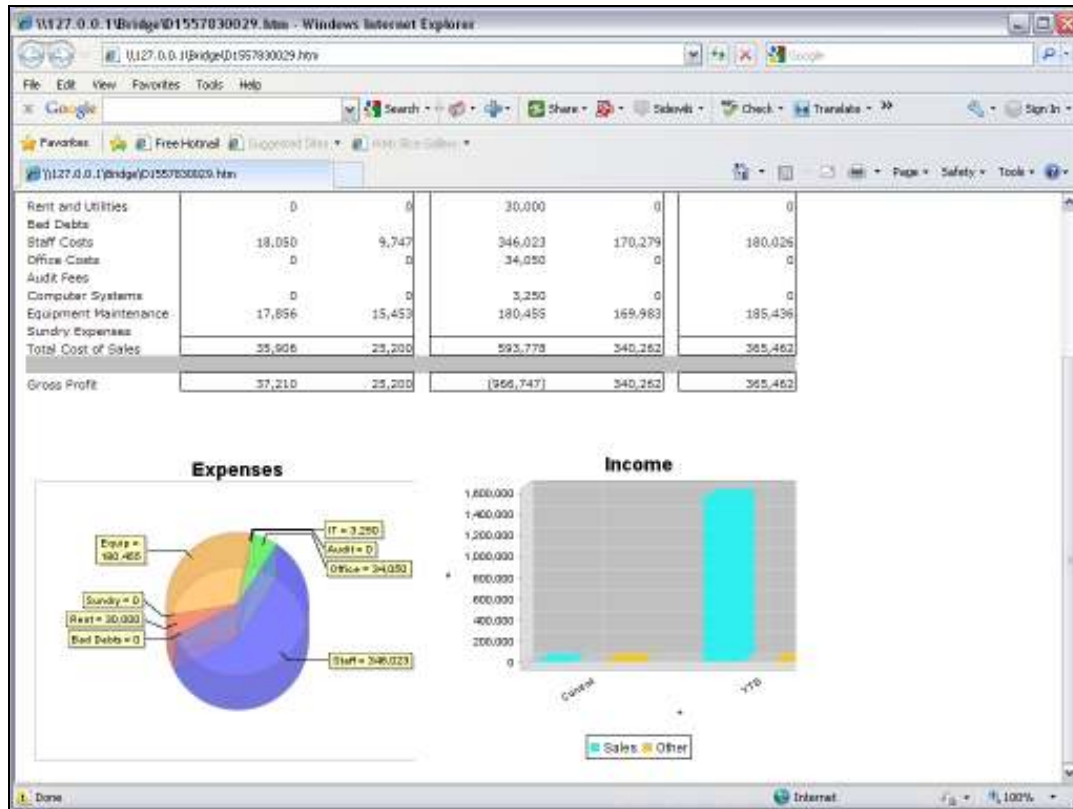


Slide 1

Slide notes: We will now look at the Template we can use to include a Pie Chart in a Report.



Slide 2

Slide notes:

Web Costs	(0034)	(0035)	(0036)	(0037)	(0038)
Staff Costs	(0039)	(0040)	(0041)	(0042)	(0043)
Office Costs	(0044)	(0045)	(0046)	(0047)	(0048)
Audit Fees	(0049)	(0050)	(0051)	(0052)	(0053)
Computer Systems	(0054)	(0055)	(0056)	(0057)	(0058)
Equipment Maintenance	(0059)	(0060)	(0061)	(0062)	(0063)
Sundry Expenses	(0064)	(0065)	(0066)	(0067)	(0068)
Total Cost of Sales	(0069)	(0070)	(0071)	(0072)	(0073)
(0084)					
(0085)Gross Profit	(0074)	(0075)	(0076)	(0077)	(0078)
(0087)Gross Loss	(0079)	(0080)	(0081)	(0082)	(0083)
(0087) (0091) (0092) (0093) (0094) (0095) (0096) (0098)					

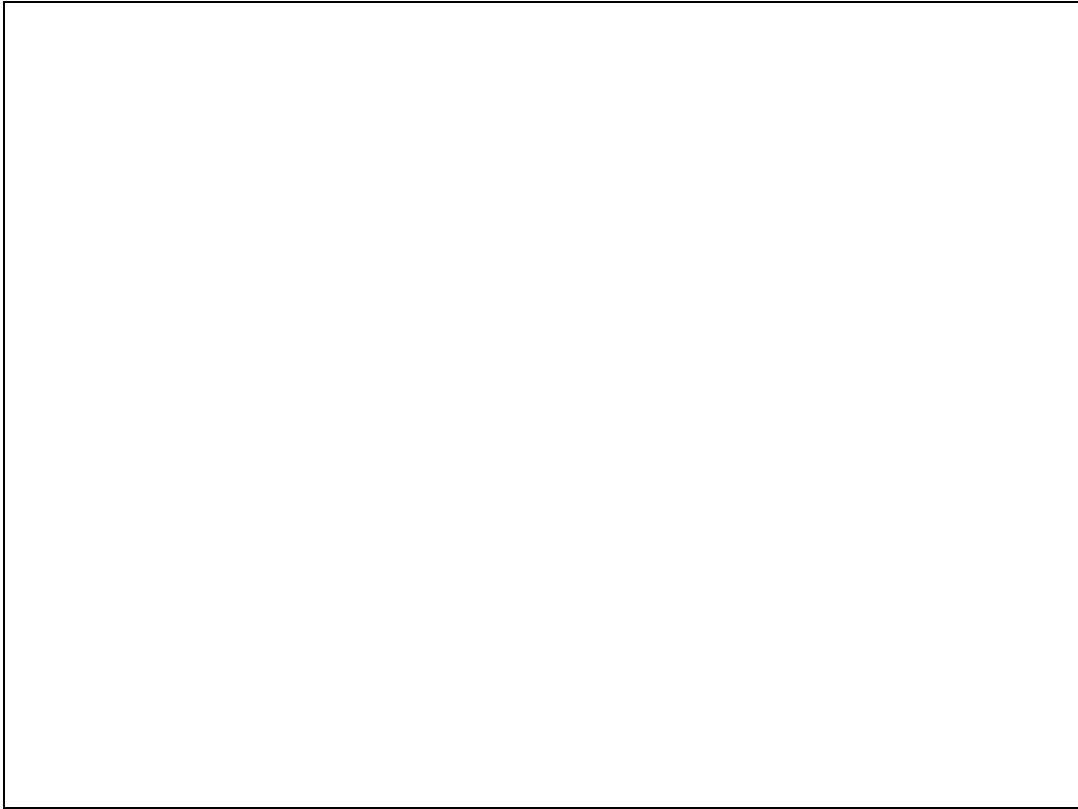
Slide 3

Slide notes: First, we look at the Layout, where the Chart is represented by a single Tag, but the important point to note is the area that has been reserved for the Pie Chart display in the result.

It is necessary to provide sufficient space for the Chart. Especially when using a spreadsheet to do the layout. In which case we need to combine and merge a number of cells to make the Chart area a single cell space that is adequate in size for the Chart to display.

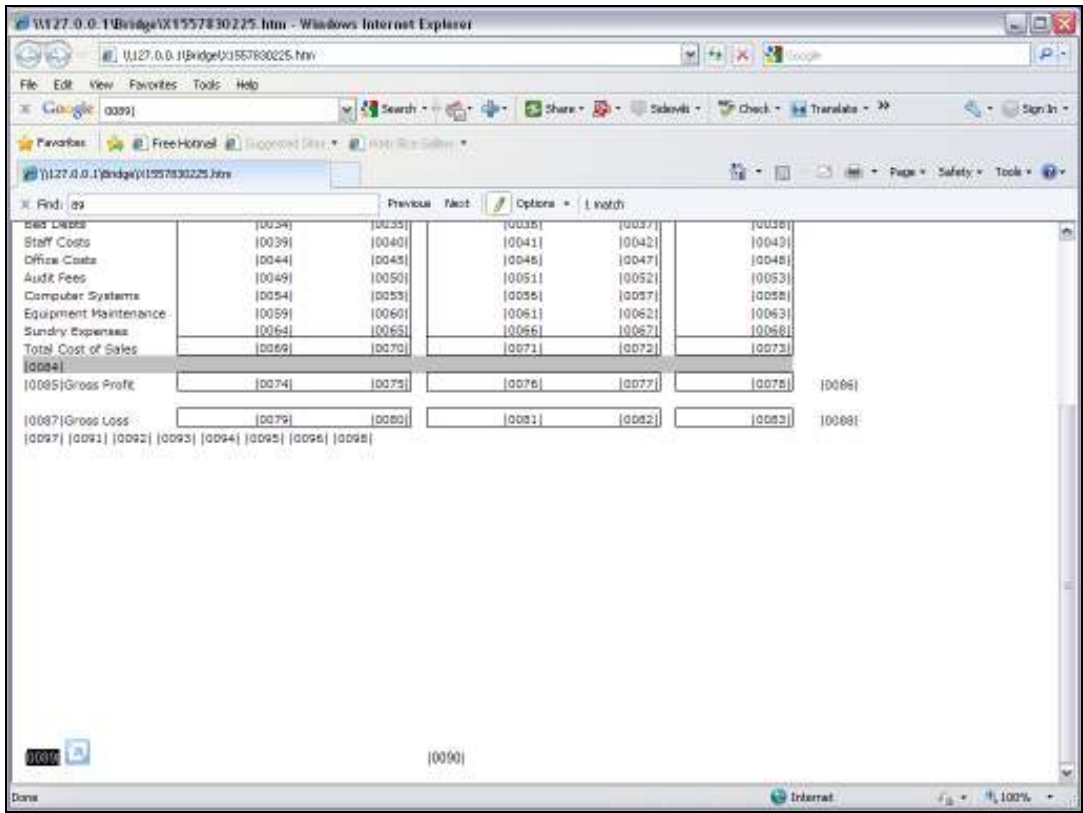
Bad Debt	(0034)	(0035)	(0036)	(0037)	(0038)
Staff Costs	(0039)	(0040)	(0041)	(0042)	(0043)
Office Costs	(0044)	(0045)	(0046)	(0047)	(0048)
Audit Fees	(0049)	(0050)	(0051)	(0052)	(0053)
Computer Systems	(0054)	(0055)	(0056)	(0057)	(0058)
Equipment Maintenance	(0059)	(0060)	(0061)	(0062)	(0063)
Sundry Expenses	(0064)	(0065)	(0066)	(0067)	(0068)
Total Cost of Sales	(0069)	(0070)	(0071)	(0072)	(0073)
(0084)					
(0085)Gross Profit	(0074)	(0075)	(0076)	(0077)	(0078)
					(0086)
(0087)Gross Loss	(0079)	(0080)	(0081)	(0082)	(0083)
(0097) (0091) (0092) (0093) (0094) (0095) (0096) (0098)					

Slide 4
Slide notes:



Slide 5

Slide notes:



The screenshot shows a web browser window with the address bar displaying "1127.0.0.1/bridge/1557830225.htm". The browser is displaying a financial statement with a table of costs and profits/losses. The table has 6 columns and 10 rows. The first column contains labels for various costs and profit/loss items. The subsequent columns contain numerical values in parentheses, representing different categories or sub-items. The table is as follows:

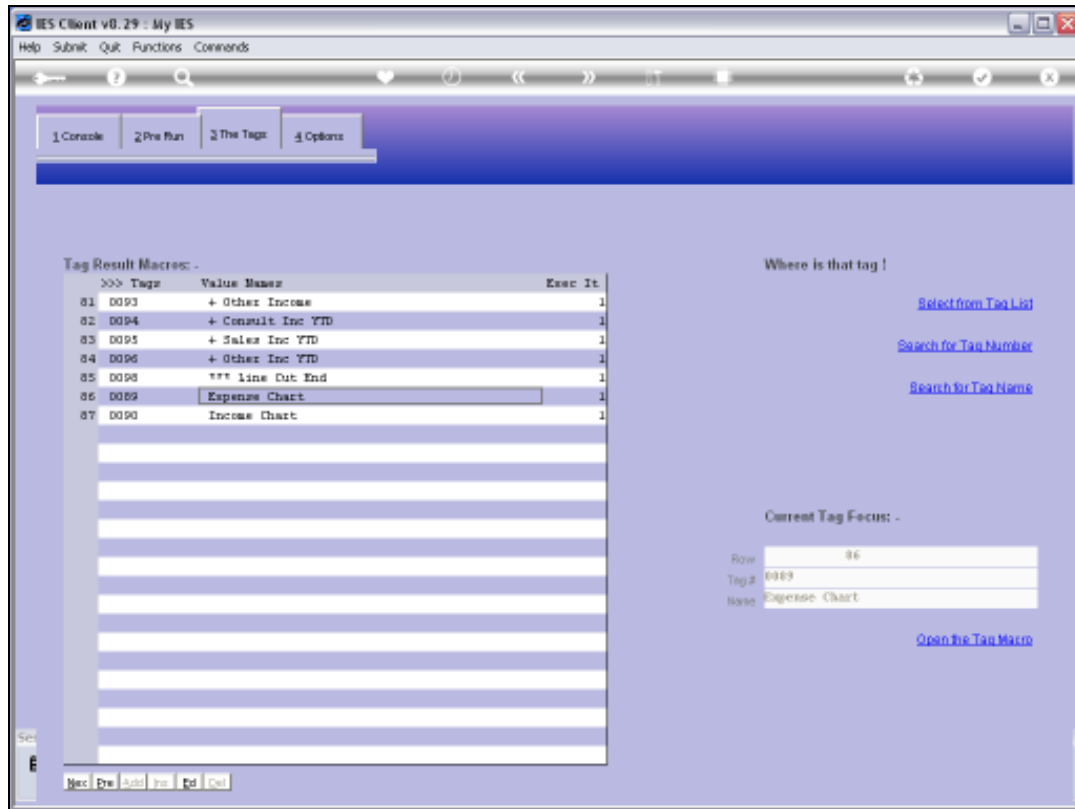
	(0034)	(0035)	(0036)	(0037)	(0038)
Staff Costs	(0039)	(0040)	(0041)	(0042)	(0043)
Office Costs	(0044)	(0045)	(0046)	(0047)	(0048)
Audit Fees	(0049)	(0050)	(0051)	(0052)	(0053)
Computer Systems	(0054)	(0055)	(0056)	(0057)	(0058)
Equipment Maintenance	(0059)	(0060)	(0061)	(0062)	(0063)
Sundry Expenses	(0064)	(0065)	(0066)	(0067)	(0068)
Total Cost of Sales	(0069)	(0070)	(0071)	(0072)	(0073)
(0084)					
(0085)Gross Profit	(0074)	(0075)	(0076)	(0077)	(0078)
(0087)Gross Loss	(0079)	(0080)	(0081)	(0082)	(0083)
(0097) (0091) (0092) (0093) (0094) (0095) (0096) (0098)					

Slide 6
Slide notes:



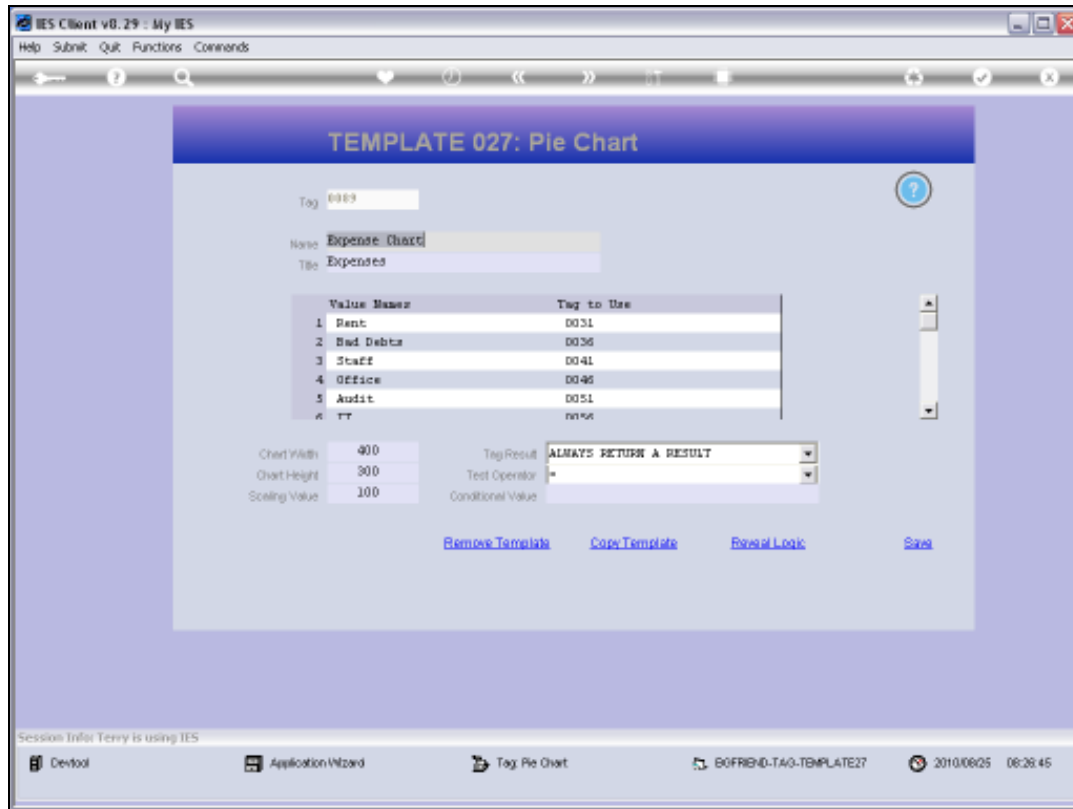
Slide 7

Slide notes:



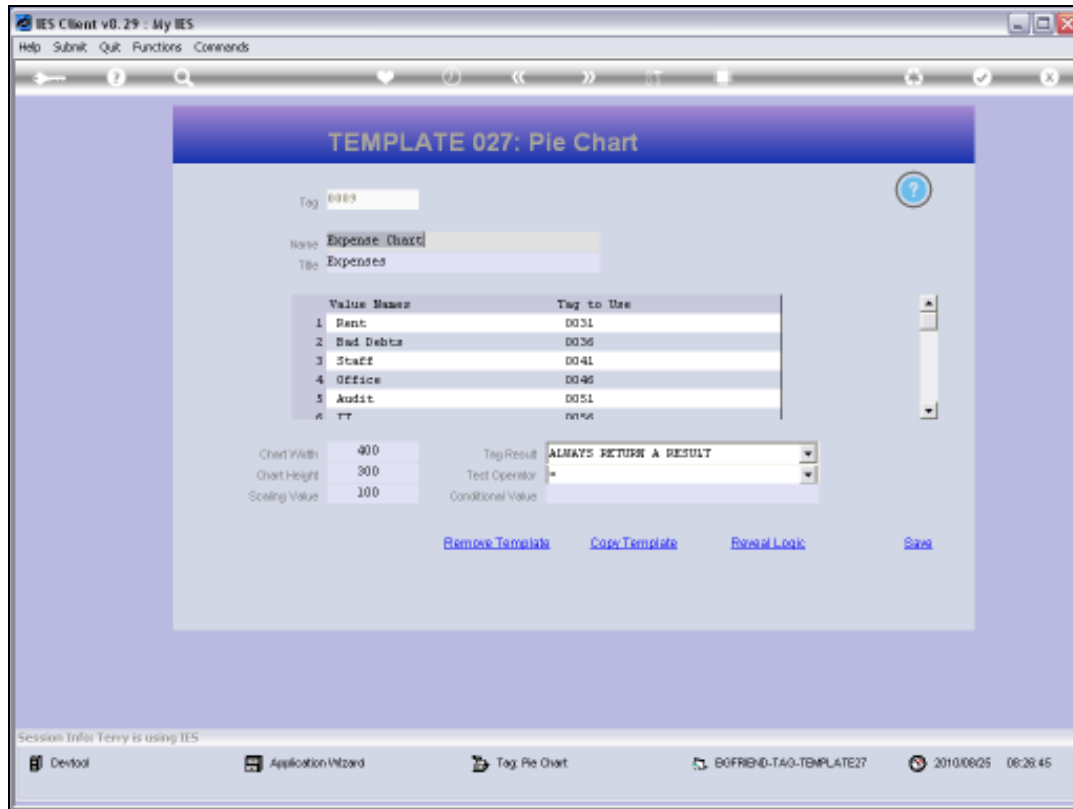
Slide 8

Slide notes: In our example Report, the Pie Chart is called 'Expense Chart' at Tag 89.



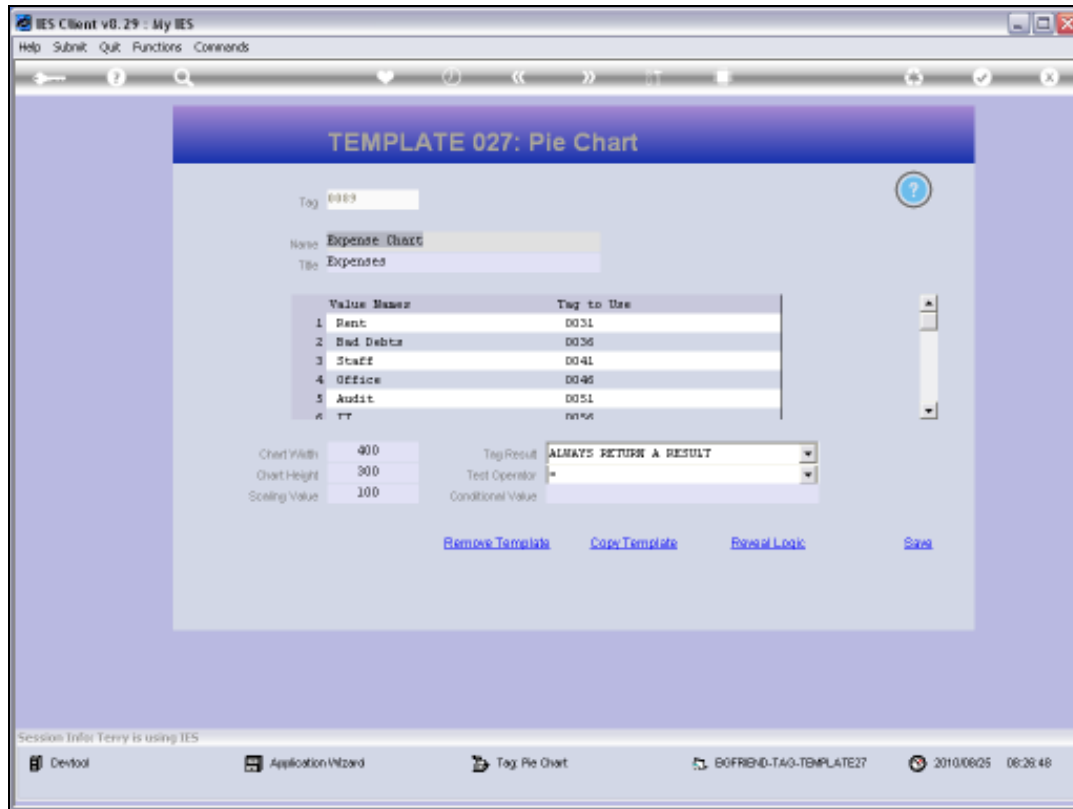
Slide 9

Slide notes:



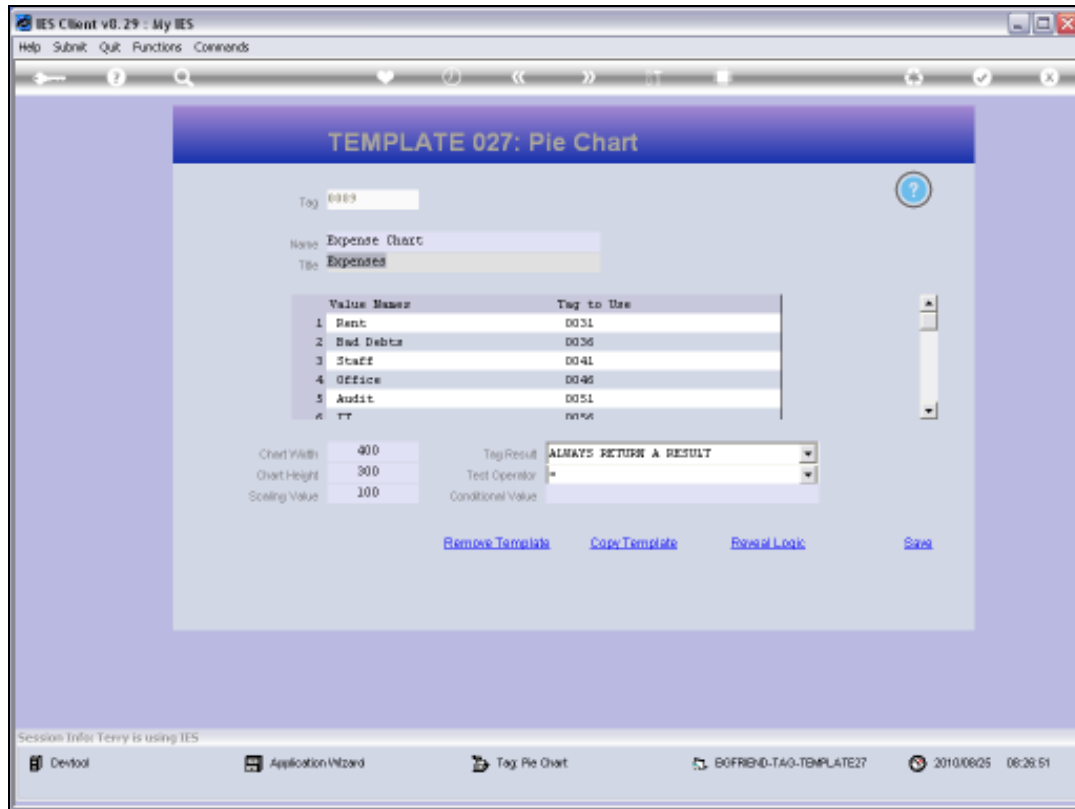
Slide 10

Slide notes:



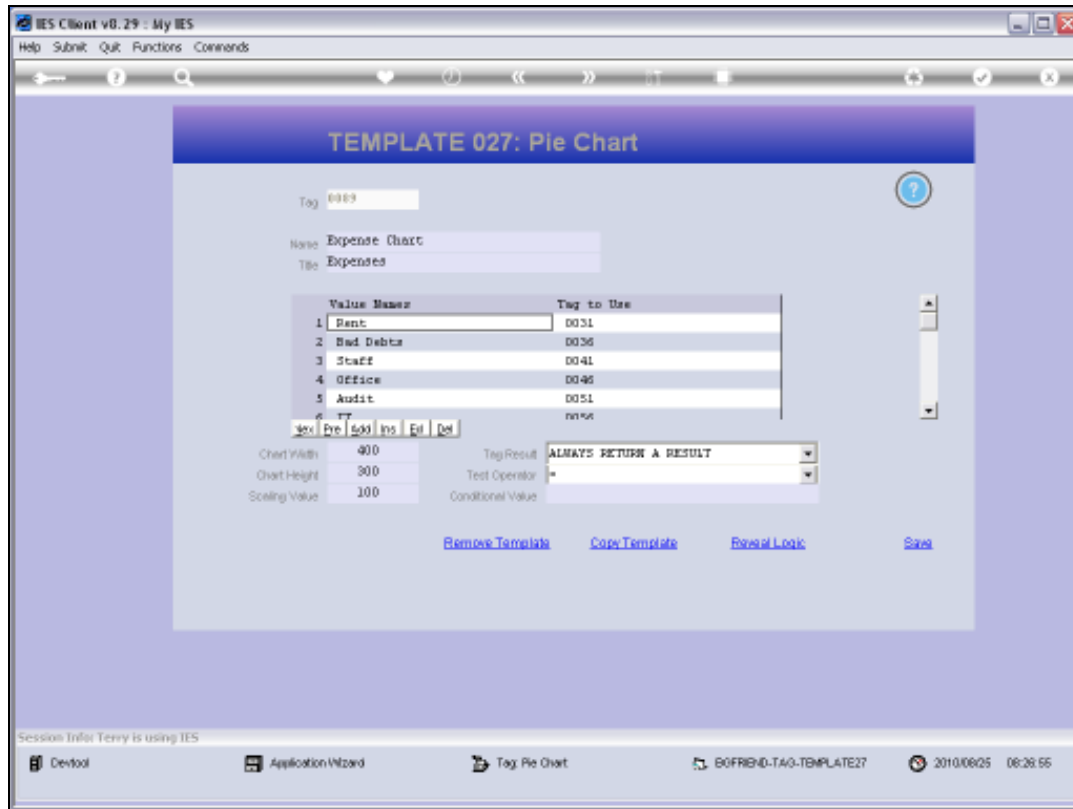
Slide 11

Slide notes: A Chart gets a Title.



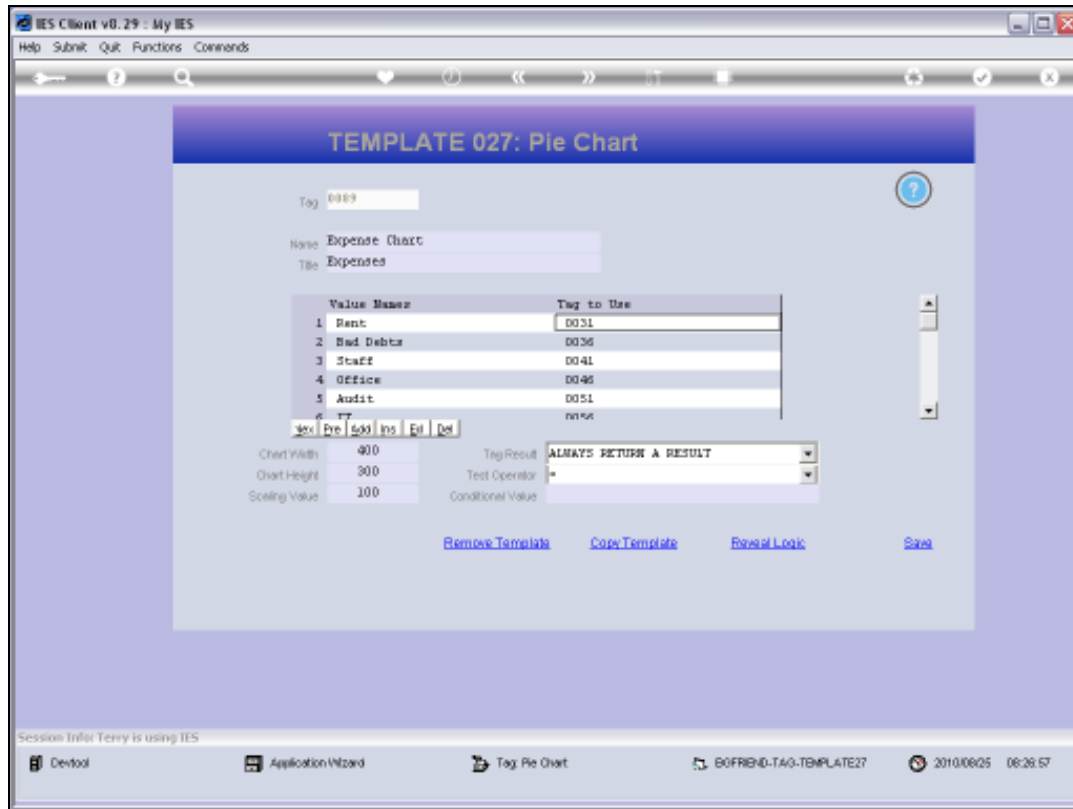
Slide 12

Slide notes: We invent the Series Names that we want to use, and they are called Value Names. Each Value Name gets it's Value from another Tag result.



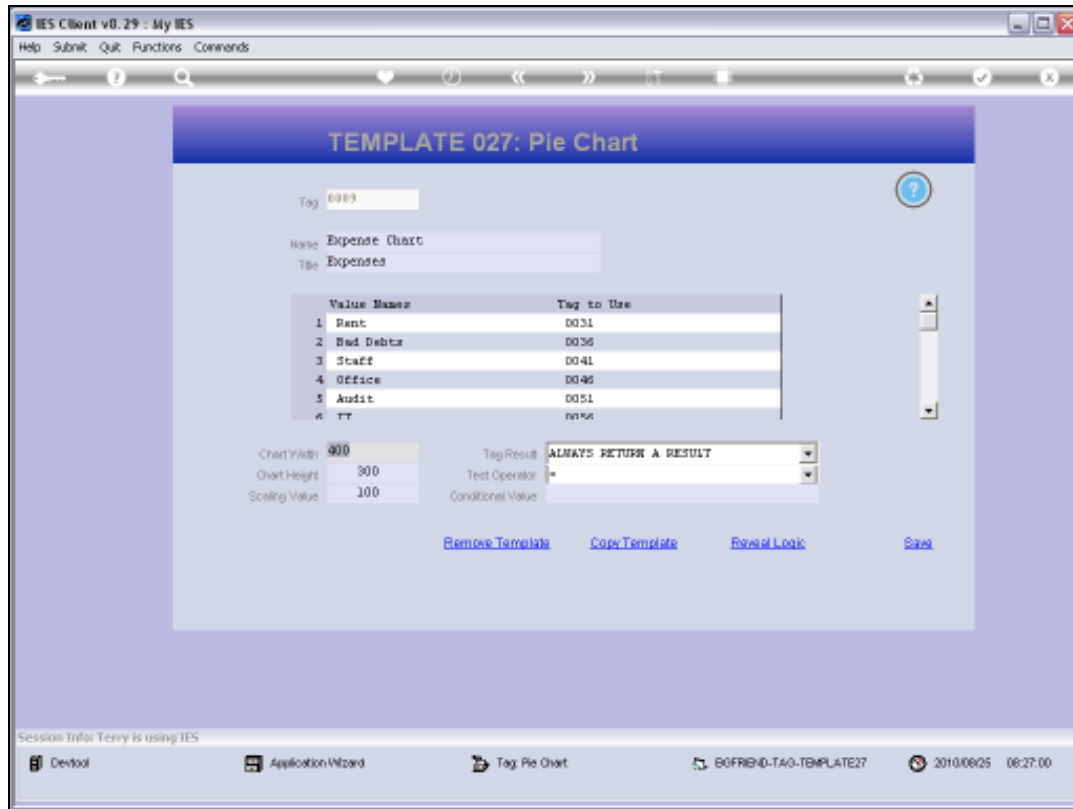
Slide 13

Slide notes:



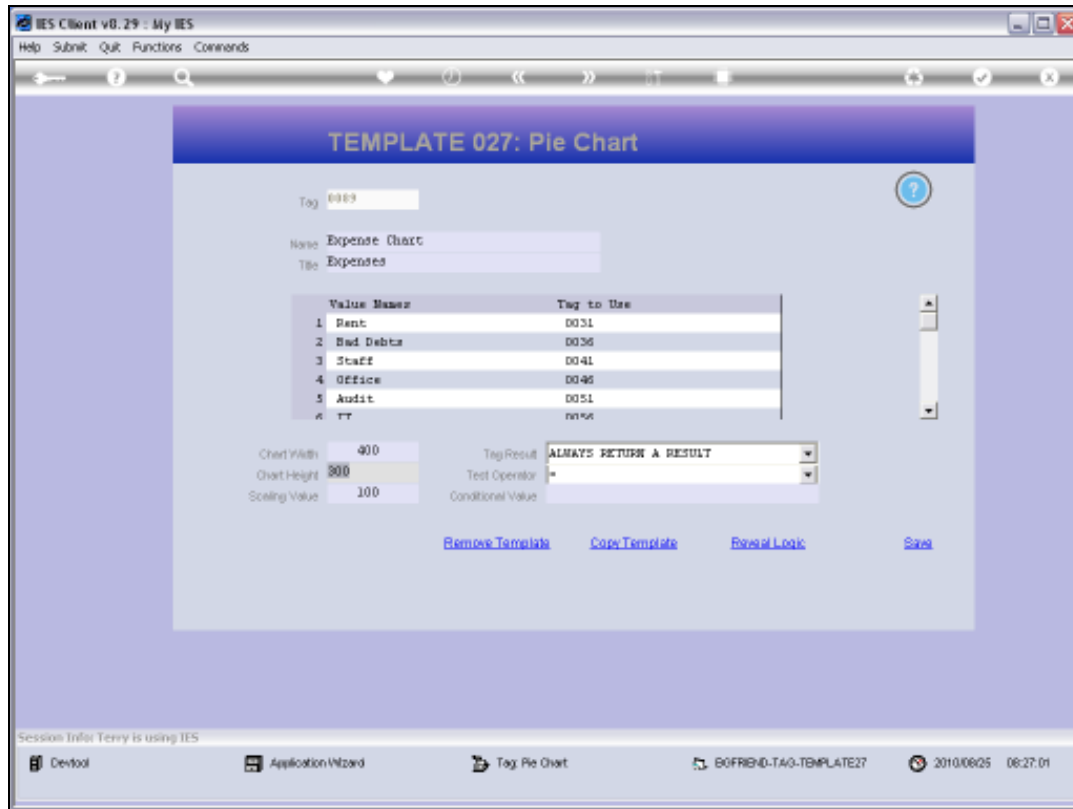
Slide 14

Slide notes: We may also choose Width, Height and Scaling values.



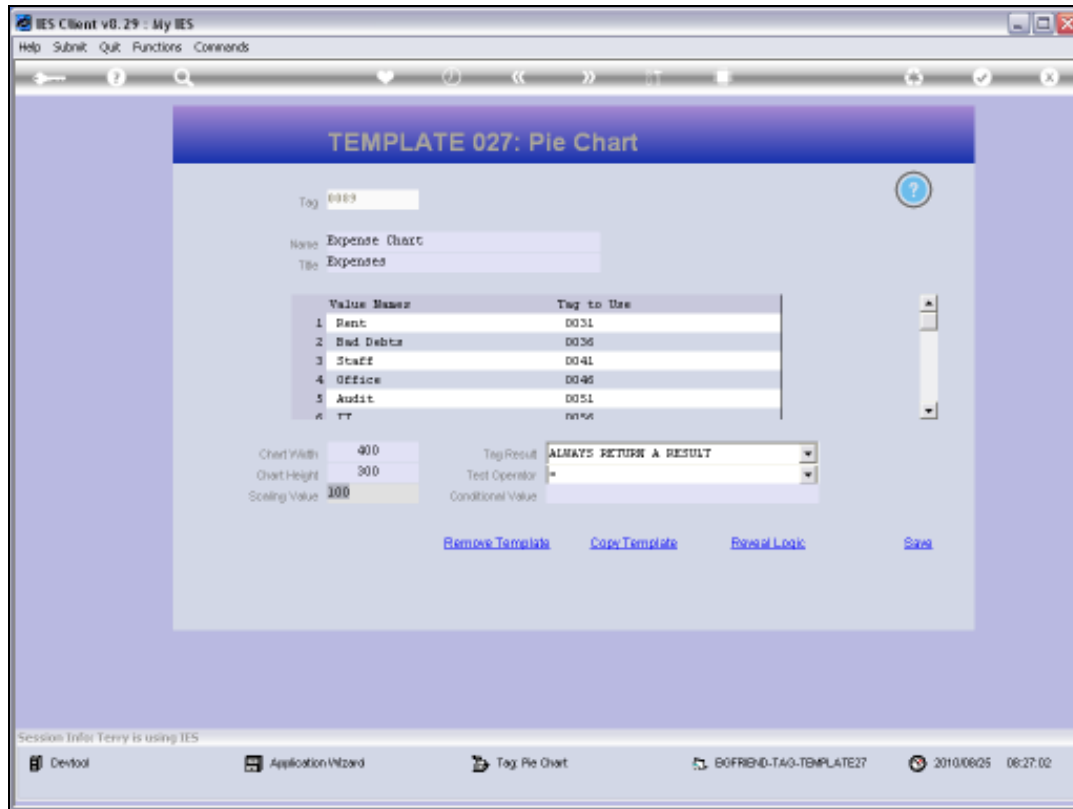
Slide 15

Slide notes:



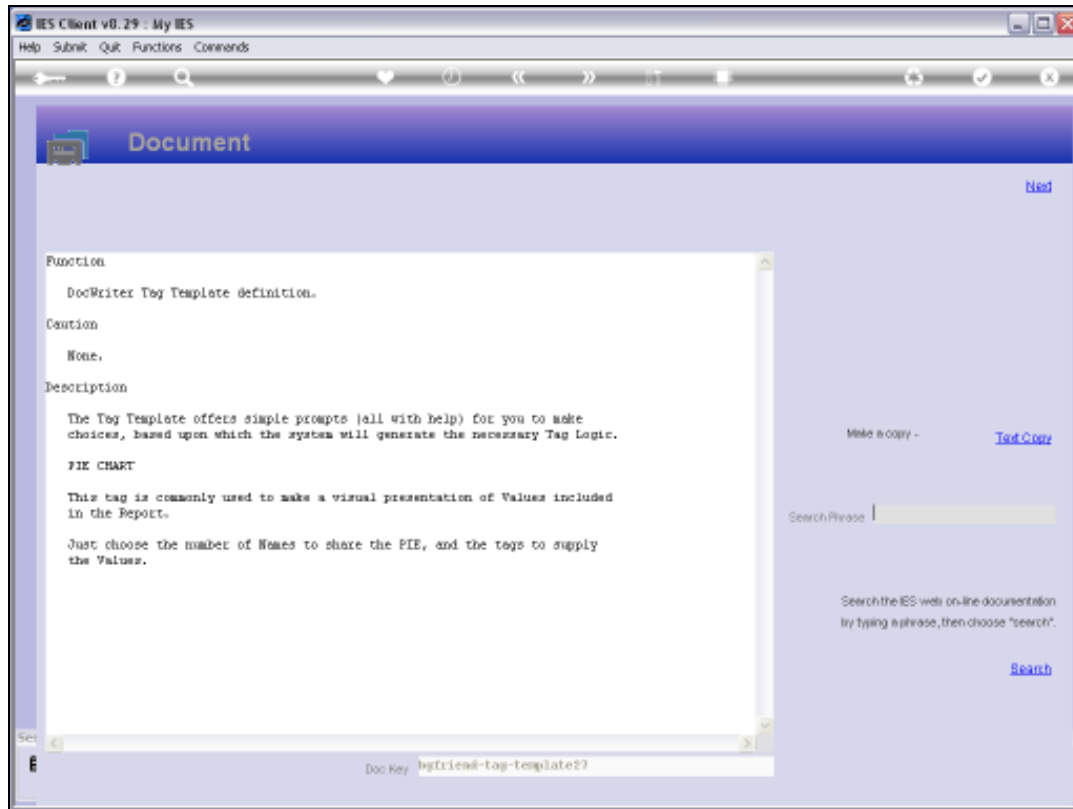
Slide 16

Slide notes:



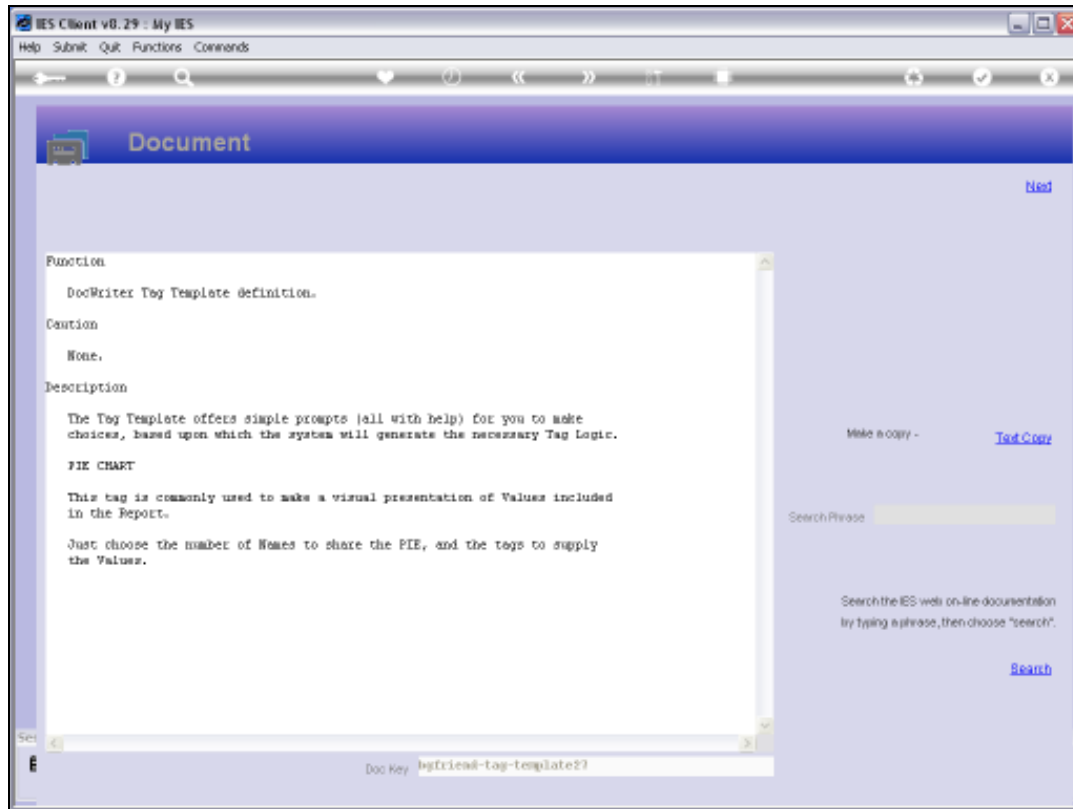
Slide 17

Slide notes:



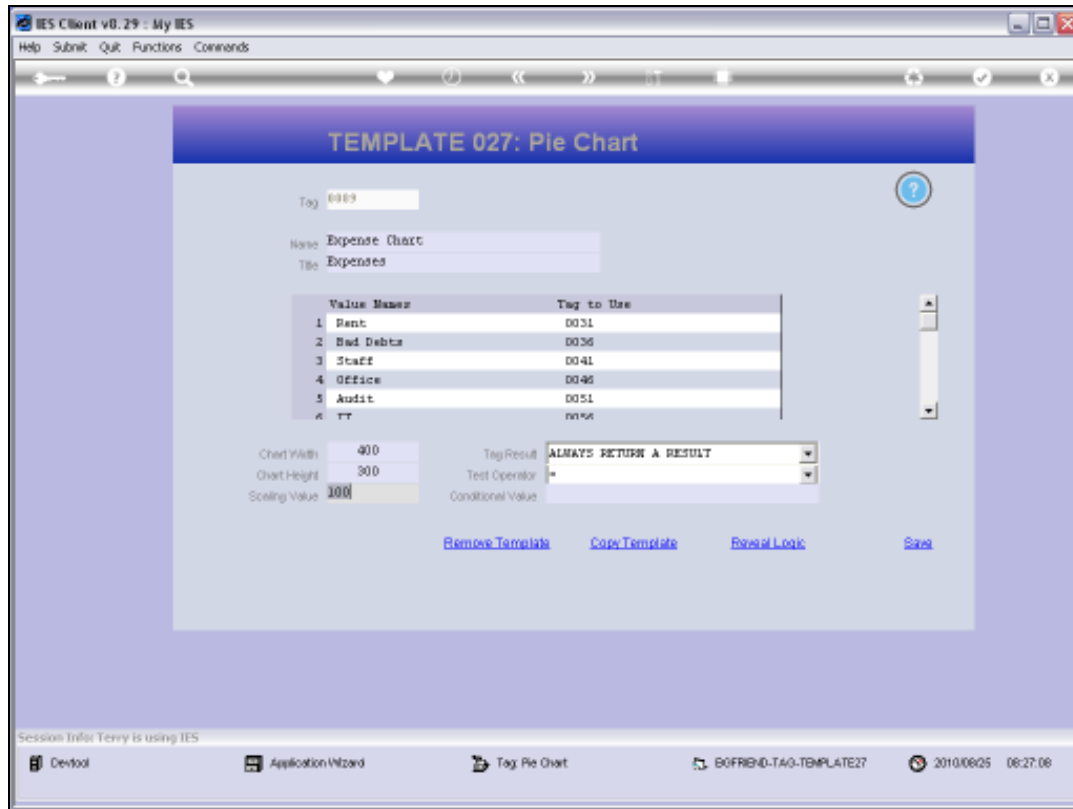
Slide 18

Slide notes:



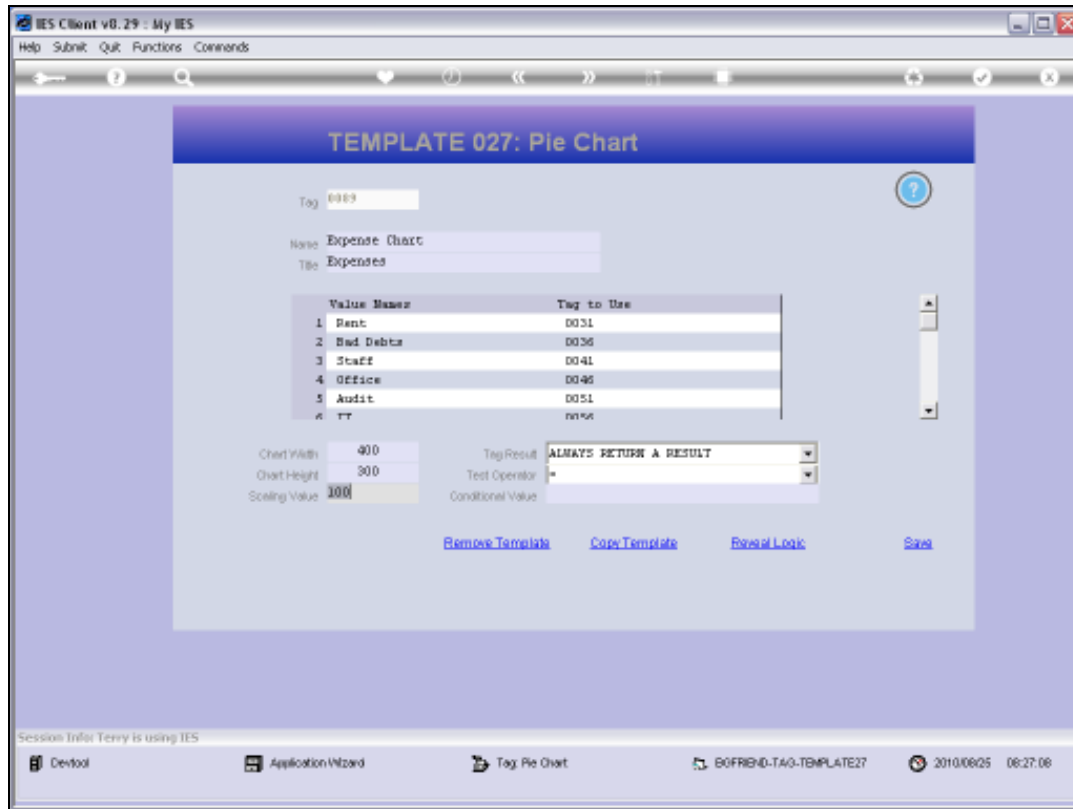
Slide 19

Slide notes:



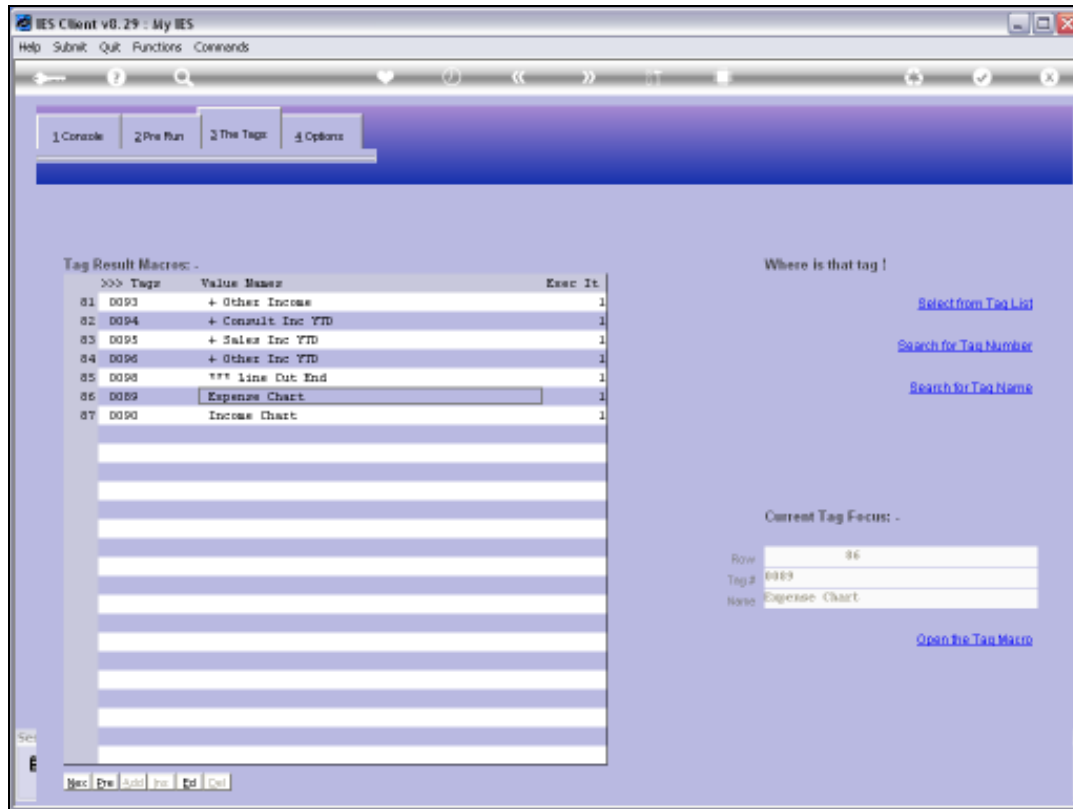
Slide 20

Slide notes: And that's how easy it is to include a Pie Chart in the Report.



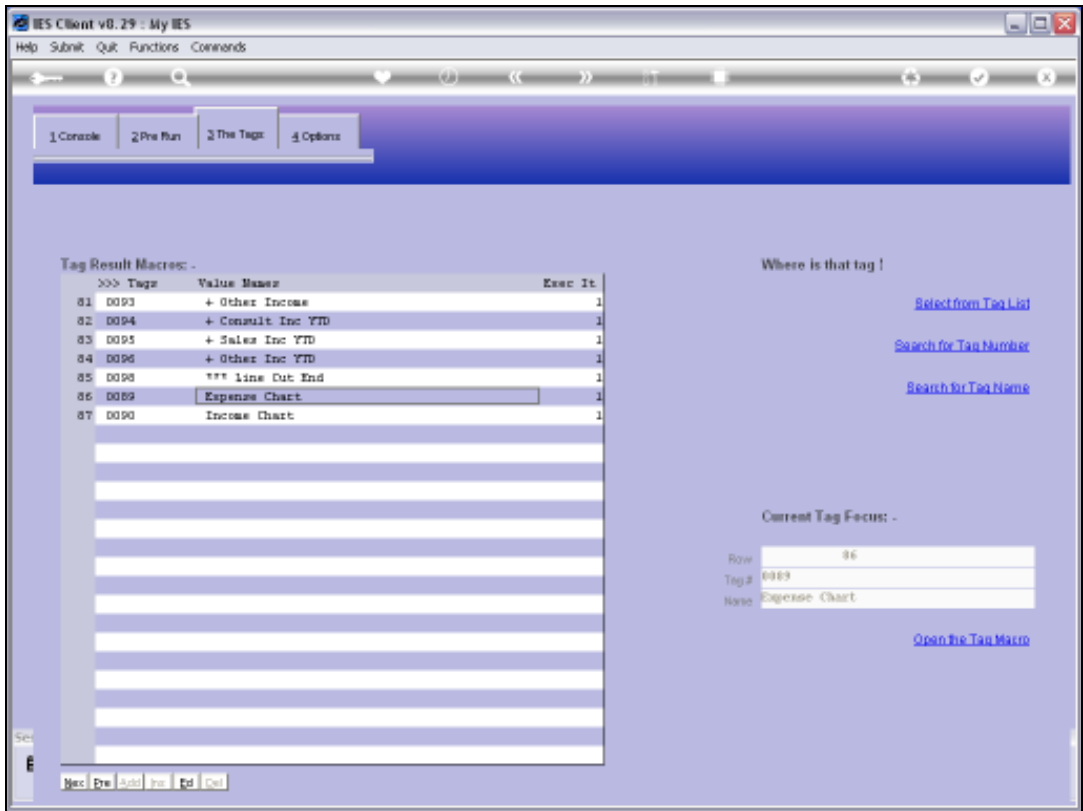
Slide 21

Slide notes:

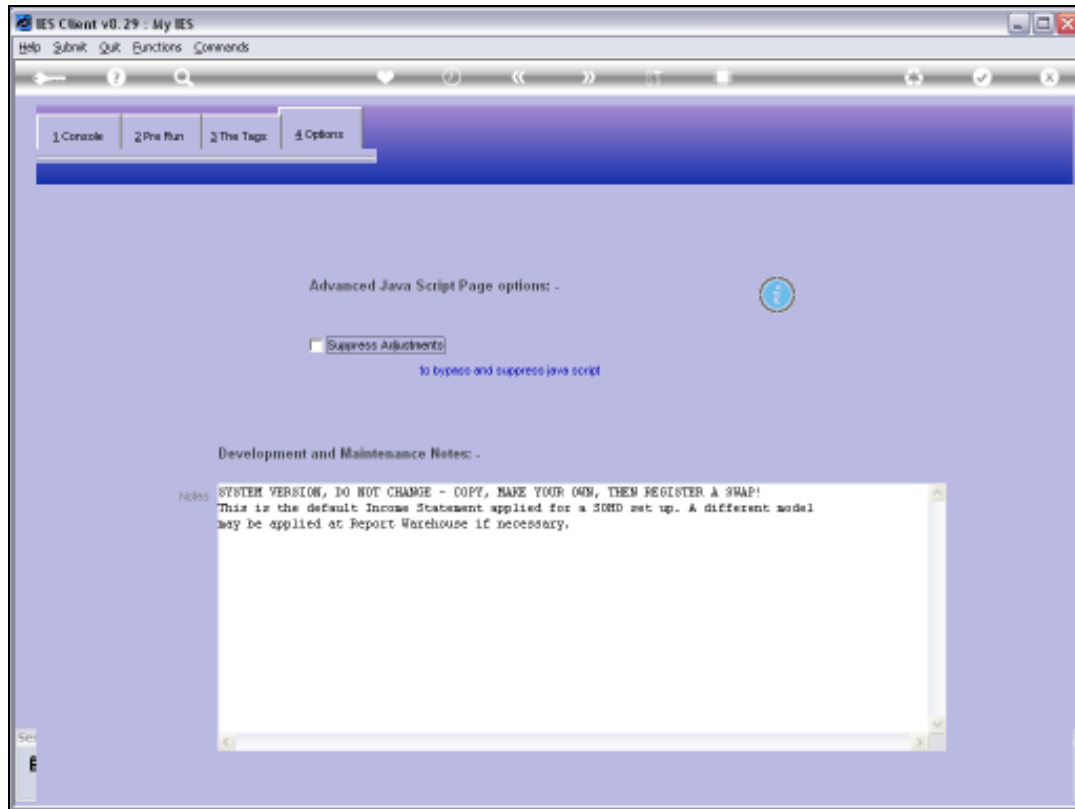


Slide 22

Slide notes:

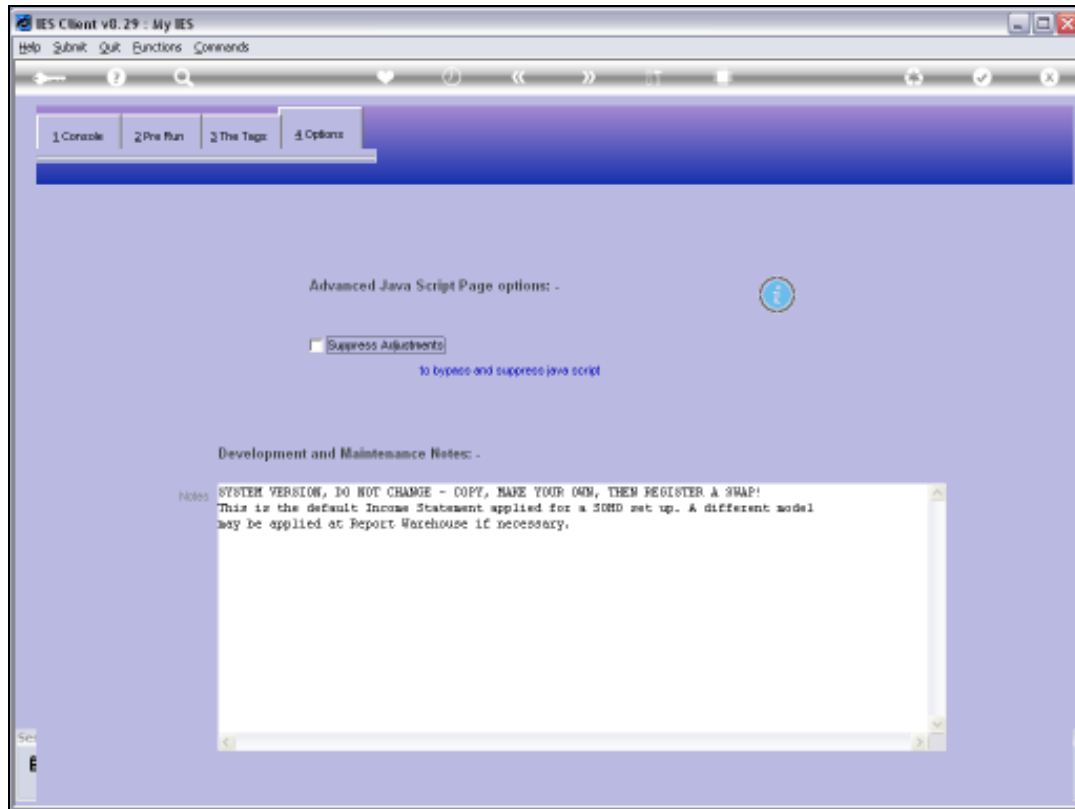


Slide 23
Slide notes:



Slide 24

Slide notes: As a reminder, we note that when we use Charts in a Report, then the Java Script must NOT be suppressed.



Slide 25

Slide notes: