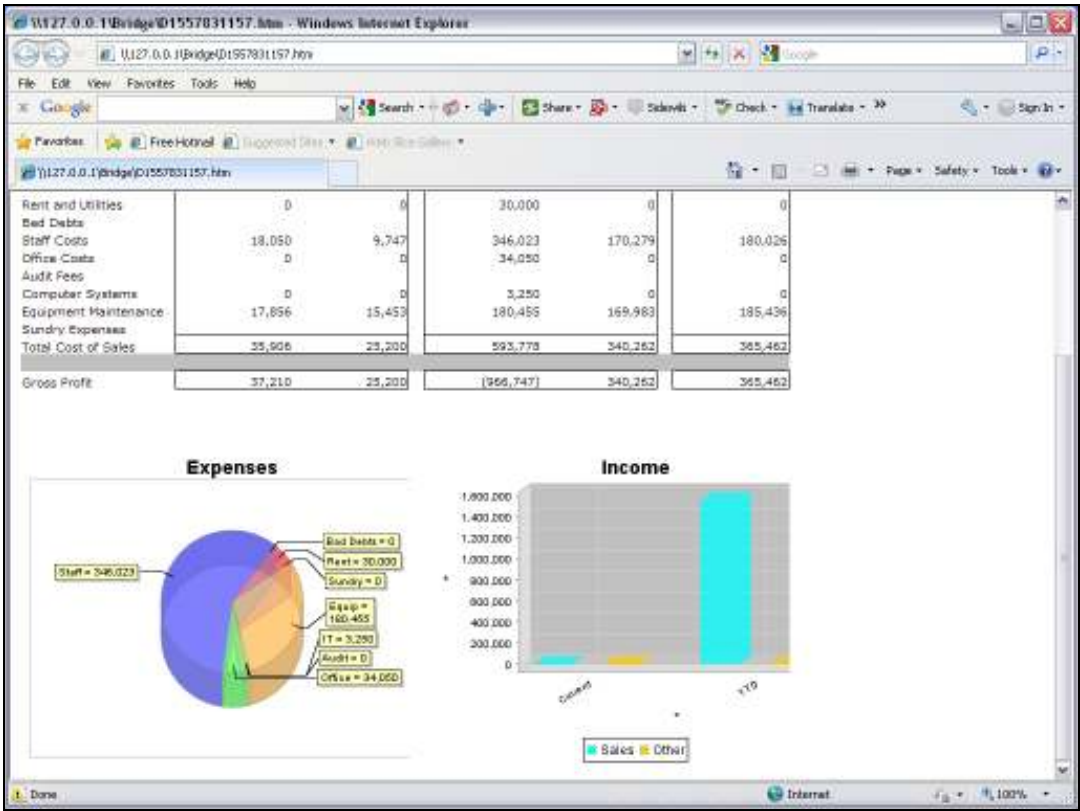


Slide 1

Slide notes: A Bar Chart can be included in a Report with a single Tag.



Slide 2
Slide notes:

Rent and Utilities	[0029]	[0030]	[0031]	[0032]	[0033]	
Bad Debts	[0034]	[0035]	[0036]	[0037]	[0038]	
Staff Costs	[0039]	[0040]	[0041]	[0042]	[0043]	
Office Costs	[0044]	[0045]	[0046]	[0047]	[0048]	
Audit Fees	[0049]	[0050]	[0051]	[0052]	[0053]	
Computer Systems	[0054]	[0055]	[0056]	[0057]	[0058]	
Equipment Maintenance	[0059]	[0060]	[0061]	[0062]	[0063]	
Sundry Expenses	[0064]	[0065]	[0066]	[0067]	[0068]	
Total Cost of Sales	[0069]	[0070]	[0071]	[0072]	[0073]	
[0084]						
[0085]Gross Profit	[0074]	[0075]	[0076]	[0077]	[0078]	[0086]
[0087]Gross Loss	[0079]	[0080]	[0081]	[0082]	[0083]	[0088]
[0097] [0091] [0092] [0093] [0094] [0095] [0096] [0098]						
[0099]						

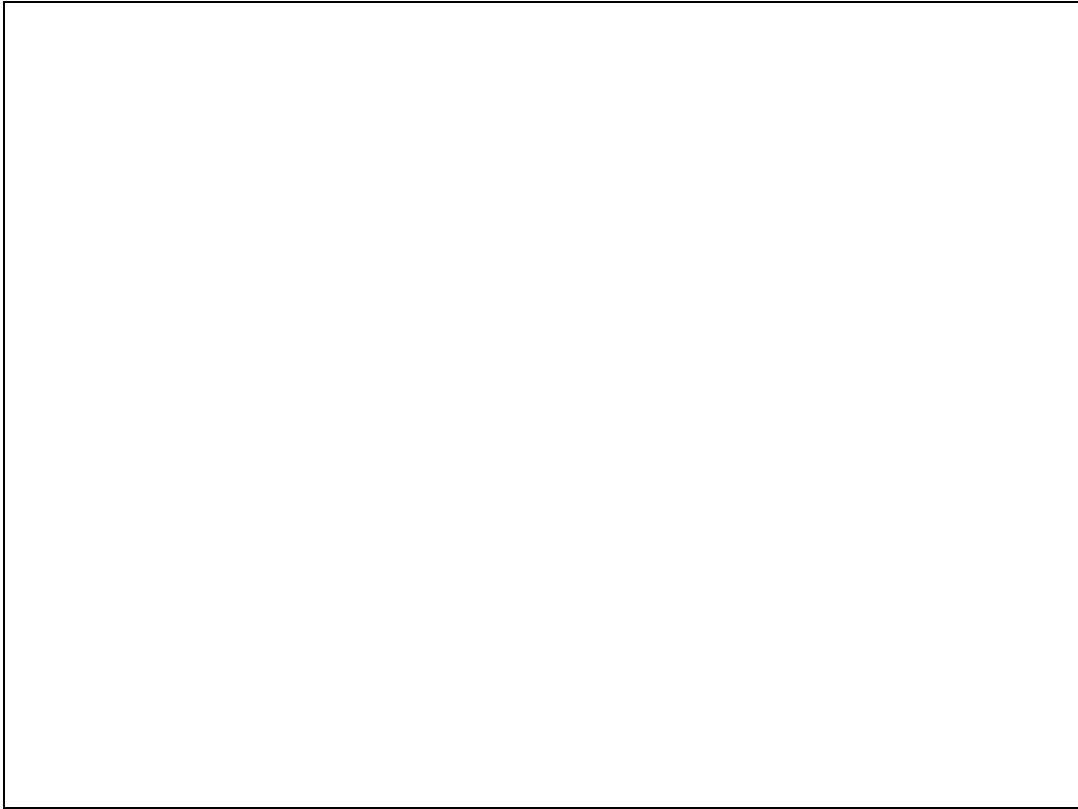
Slide 3

Slide notes: In the Layout, it is this Tag 90 that will produce the Bar Chart. It is important to provide adequate space for the Chart to display, especially when using a spreadsheet to do the layout, in which case we need to combine and merge cells to create a single cell space of adequate size for the Chart to display.

Rent and Utilities	(0029)	(0030)	(0031)	(0032)	(0033)	
Bad Debts	(0034)	(0035)	(0036)	(0037)	(0038)	
Staff Costs	(0039)	(0040)	(0041)	(0042)	(0043)	
Office Costs	(0044)	(0045)	(0046)	(0047)	(0048)	
Audit Fees	(0049)	(0050)	(0051)	(0052)	(0053)	
Computer Systems	(0054)	(0055)	(0056)	(0057)	(0058)	
Equipment Maintenance	(0059)	(0060)	(0061)	(0062)	(0063)	
Sundry Expenses	(0064)	(0065)	(0066)	(0067)	(0068)	
Total Cost of Sales	(0069)	(0070)	(0071)	(0072)	(0073)	
(0084)						
(0085)Gross Profit	(0074)	(0075)	(0076)	(0077)	(0078)	(0086)
(0087)Gross Loss	(0079)	(0080)	(0081)	(0082)	(0083)	(0088)
(0097) (0091) (0092) (0093) (0094) (0095) (0096) (0098)						
(0099)		(0090)				

Slide 4

Slide notes:



Slide 5

Slide notes:

Rent and Utilities	(0029)	(0030)	(0031)	(0032)	(0033)	
Bad Debts	(0034)	(0035)	(0036)	(0037)	(0038)	
Staff Costs	(0039)	(0040)	(0041)	(0042)	(0043)	
Office Costs	(0044)	(0045)	(0046)	(0047)	(0048)	
Audit Fees	(0049)	(0050)	(0051)	(0052)	(0053)	
Computer Systems	(0054)	(0055)	(0056)	(0057)	(0058)	
Equipment Maintenance	(0059)	(0060)	(0061)	(0062)	(0063)	
Sundry Expenses	(0064)	(0065)	(0066)	(0067)	(0068)	
Total Cost of Sales	(0069)	(0070)	(0071)	(0072)	(0073)	
(0084)						
(0085)Gross Profit	(0074)	(0075)	(0076)	(0077)	(0078)	(0086)
(0087)Gross Loss	(0079)	(0080)	(0081)	(0082)	(0083)	(0088)
(0097) (0091) (0092) (0093) (0094) (0095) (0096) (0098)						

Slide 6
Slide notes:

Rent and Utilities	[0029]	[0030]	[0031]	[0032]	[0033]	
Bad Debts	[0034]	[0035]	[0036]	[0037]	[0038]	
Staff Costs	[0039]	[0040]	[0041]	[0042]	[0043]	
Office Costs	[0044]	[0045]	[0046]	[0047]	[0048]	
Audit Fees	[0049]	[0050]	[0051]	[0052]	[0053]	
Computer Systems	[0054]	[0055]	[0056]	[0057]	[0058]	
Equipment Maintenance	[0059]	[0060]	[0061]	[0062]	[0063]	
Sundry Expenses	[0064]	[0065]	[0066]	[0067]	[0068]	
Total Cost of Sales	[0069]	[0070]	[0071]	[0072]	[0073]	
[0084]						
[0085]Gross Profit	[0074]	[0075]	[0076]	[0077]	[0078]	[0086]
[0087]Gross Loss	[0079]	[0080]	[0081]	[0082]	[0083]	[0088]
[0097] [0091] [0092] [0093] [0094] [0095] [0096] [0098]						

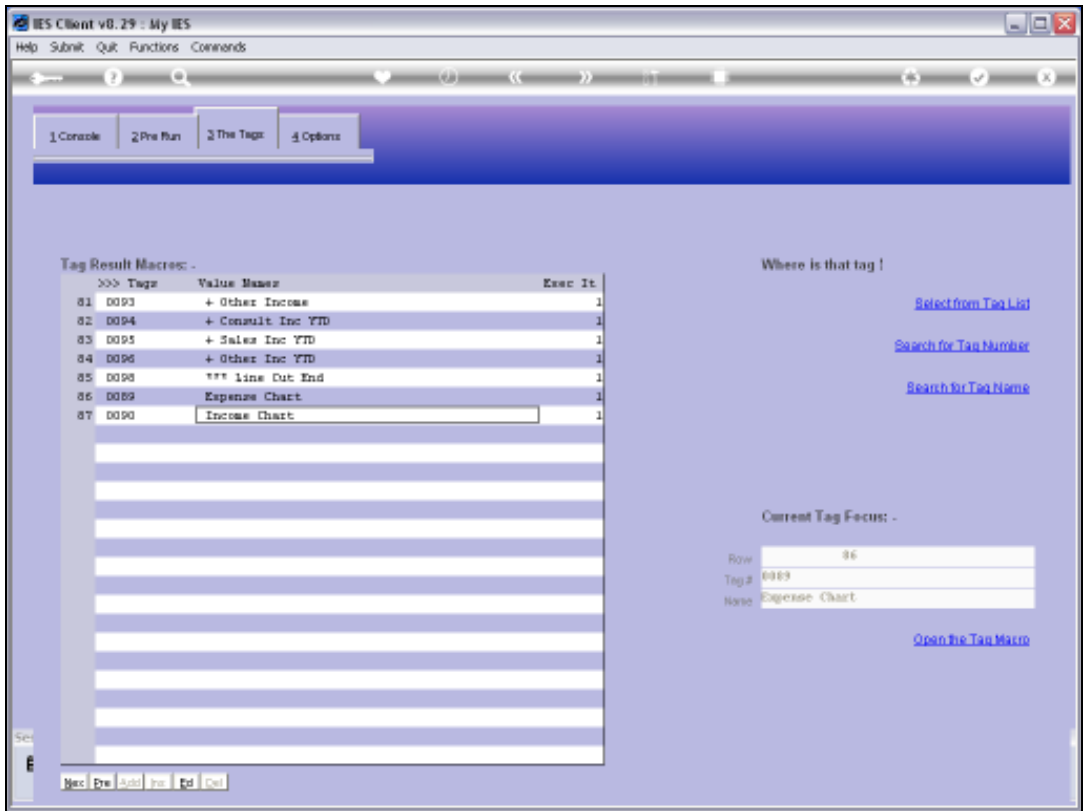
Slide 7

Slide notes:

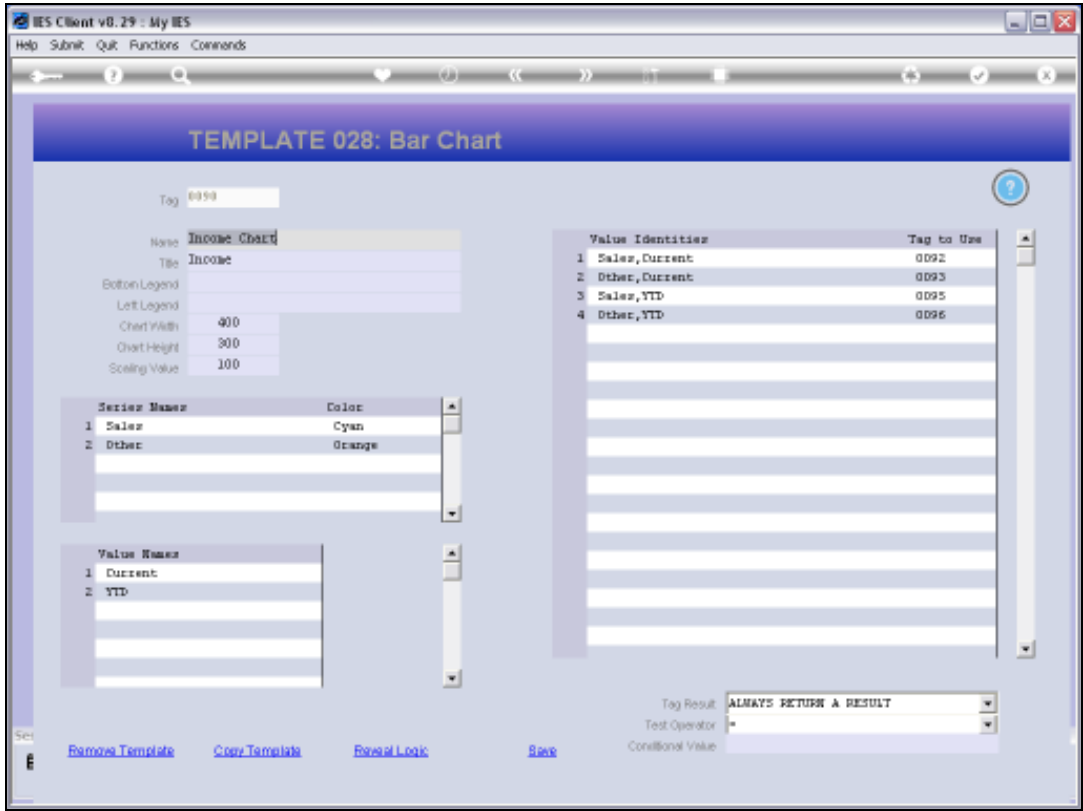


Slide 8

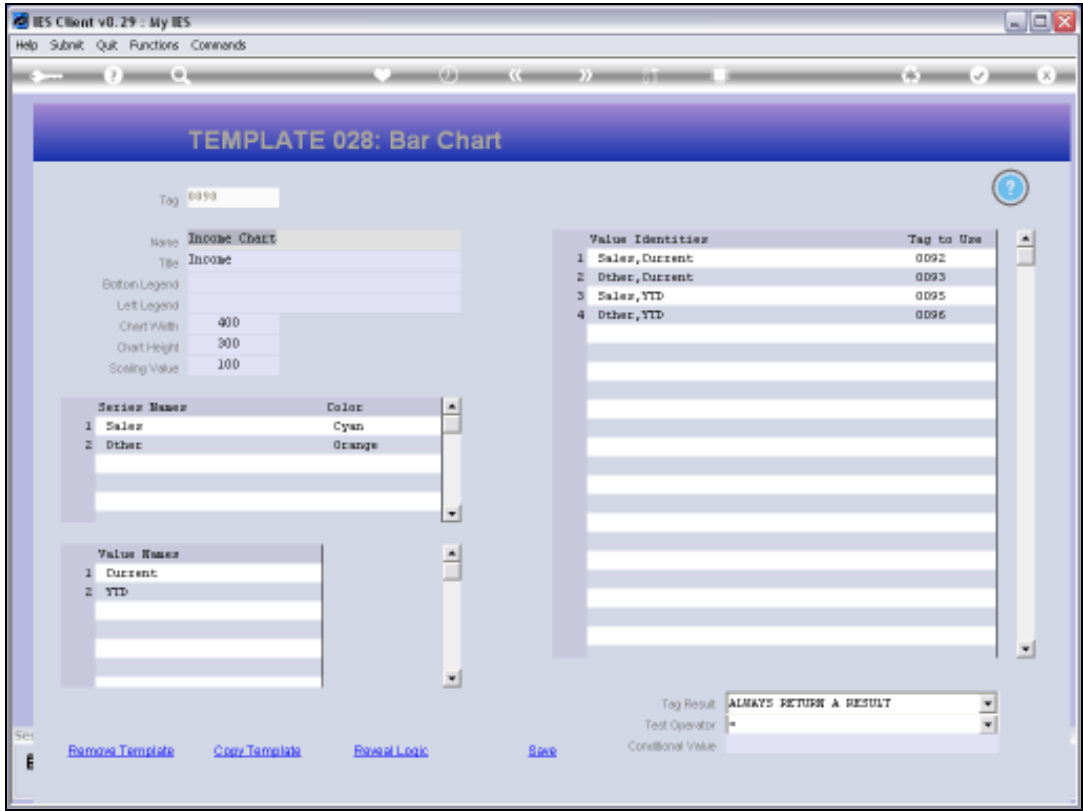
Slide notes:



Slide 9
Slide notes:



Slide 10
Slide notes:



Slide 11
Slide notes:

IES Client v8.29 : My IES

Help Submit Quit Functions Commands

TEMPLATE 028: Bar Chart

Tag: 0090

Name: Income Chart

Title: Income

Bottom Legend:

Left Legend:

Chart Width: 400

Chart Height: 300

Scaling Value: 100

Series Name	Color
1 Sales	Cyan
2 Other	Orange

Value Name
1 Current
2 YTD

Value Identifier	Tag to Use
1 Sales, Current	0092
2 Other, Current	0093
3 Sales, YTD	0095
4 Other, YTD	0096

Tag Result: ALWAYS RETURN A RESULT

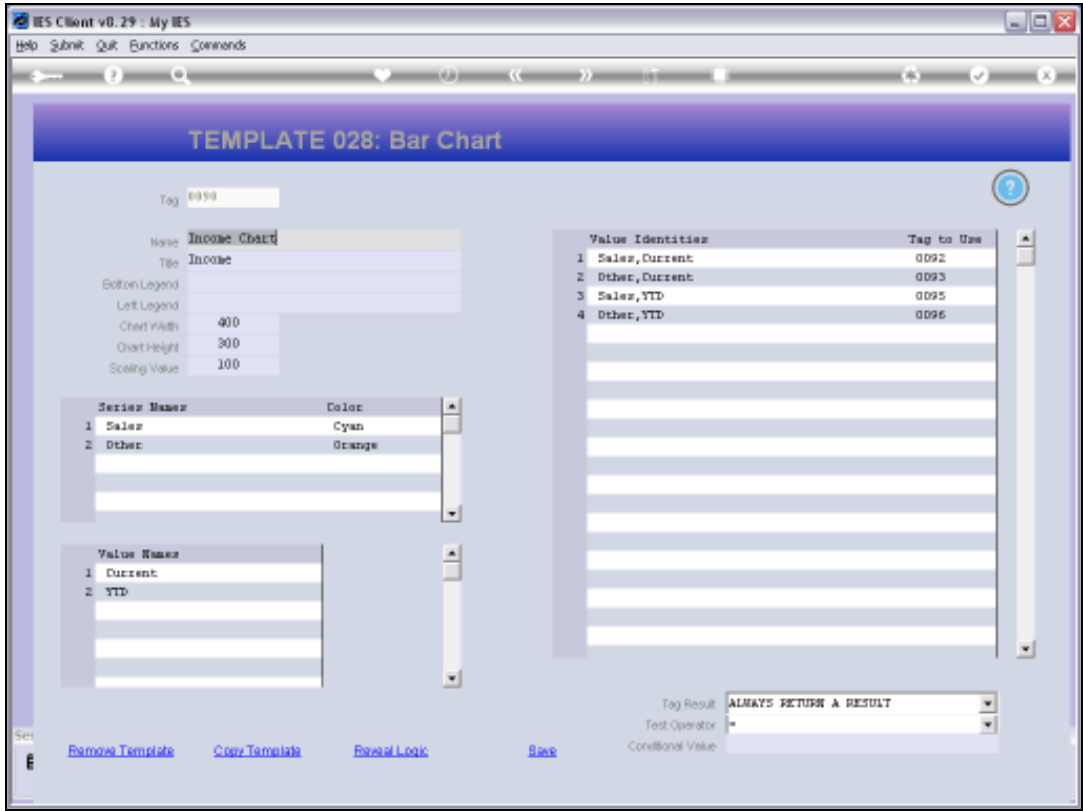
Test Operator:

Conditional Value:

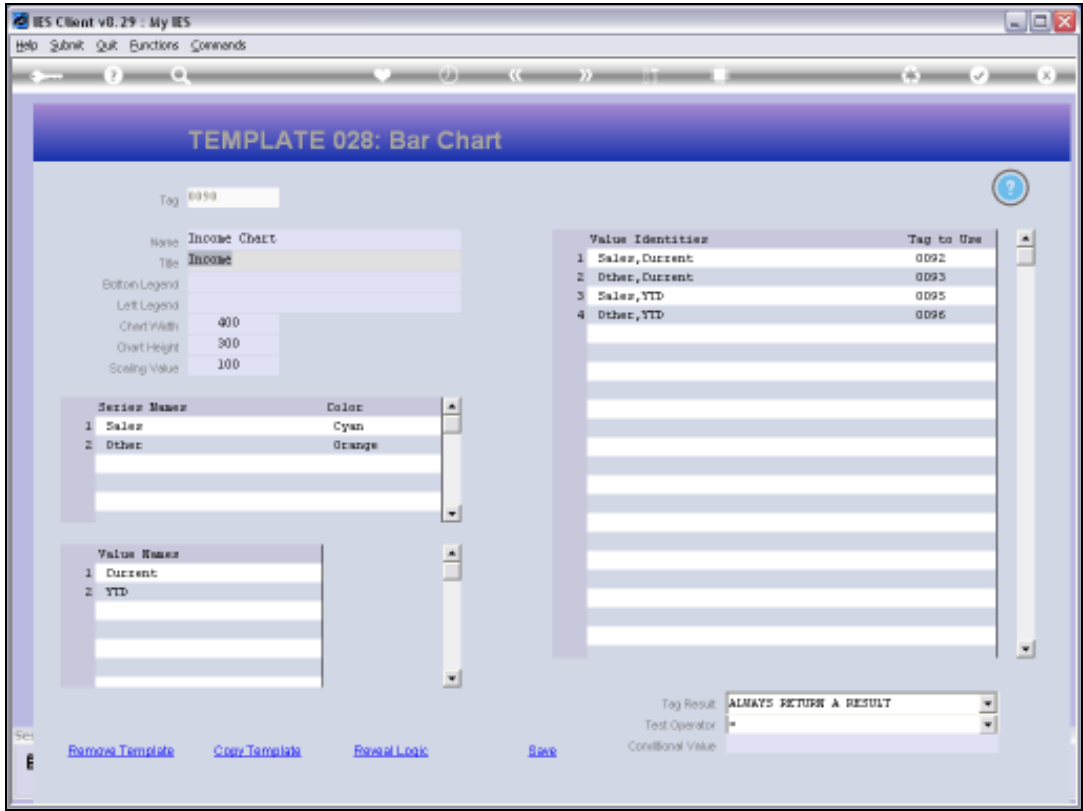
[Remove Template](#) [Copy Template](#) [Reset Logic](#) [Save](#)

Slide 12

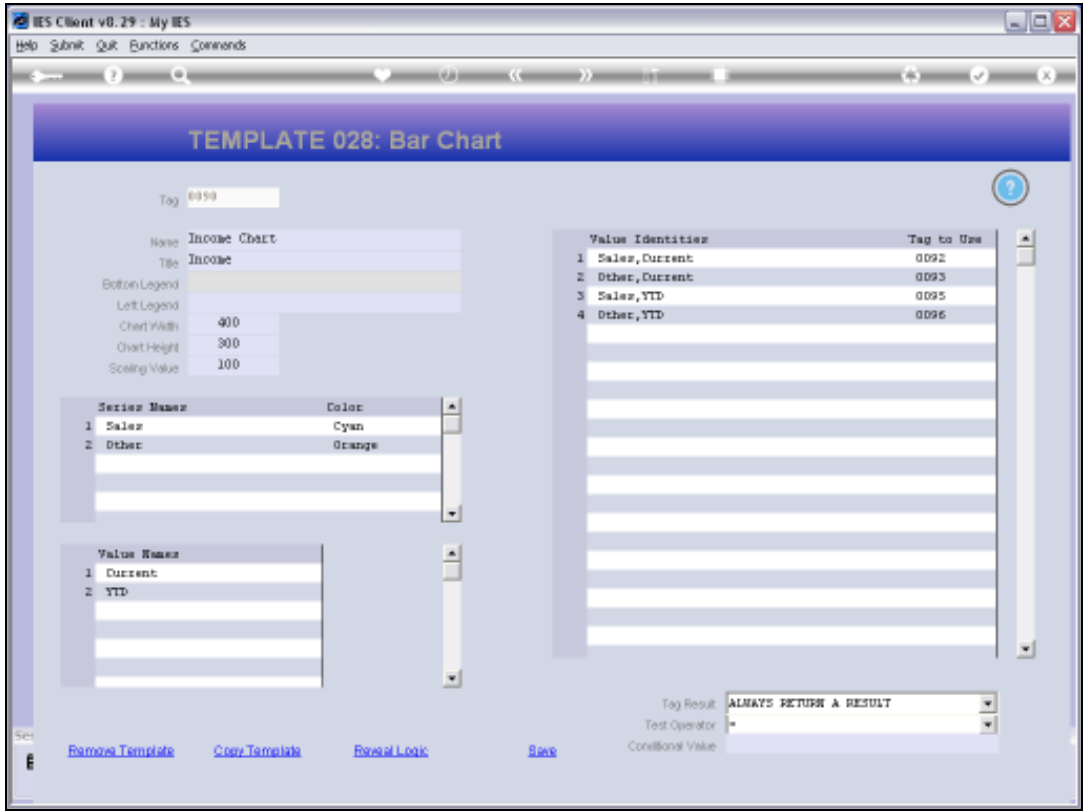
Slide notes: A Chart gets a Title, while Bottom and Left Legends are optional.



Slide 13
Slide notes:



Slide 14
Slide notes:



Slide 15
Slide notes:

IES Client v8.29 : My IES

Help Submit Quit Functions Commands

TEMPLATE 028: Bar Chart

Tag: 0090

Name: Income Chart

Title: Income

Bottom Legend:

Left Legend:

Chart Width: 400

Chart Height: 300

Scaling Value: 100

Series Name	Color
1 Sales	Cyan
2 Other	Orange

Value Name
1 Current
2 YTD

Value Identifier	Tag to Use
1 Sales, Current	0092
2 Other, Current	0093
3 Sales, YTD	0095
4 Other, YTD	0096

Tag Result: ALWAYS RETURN A RESULT

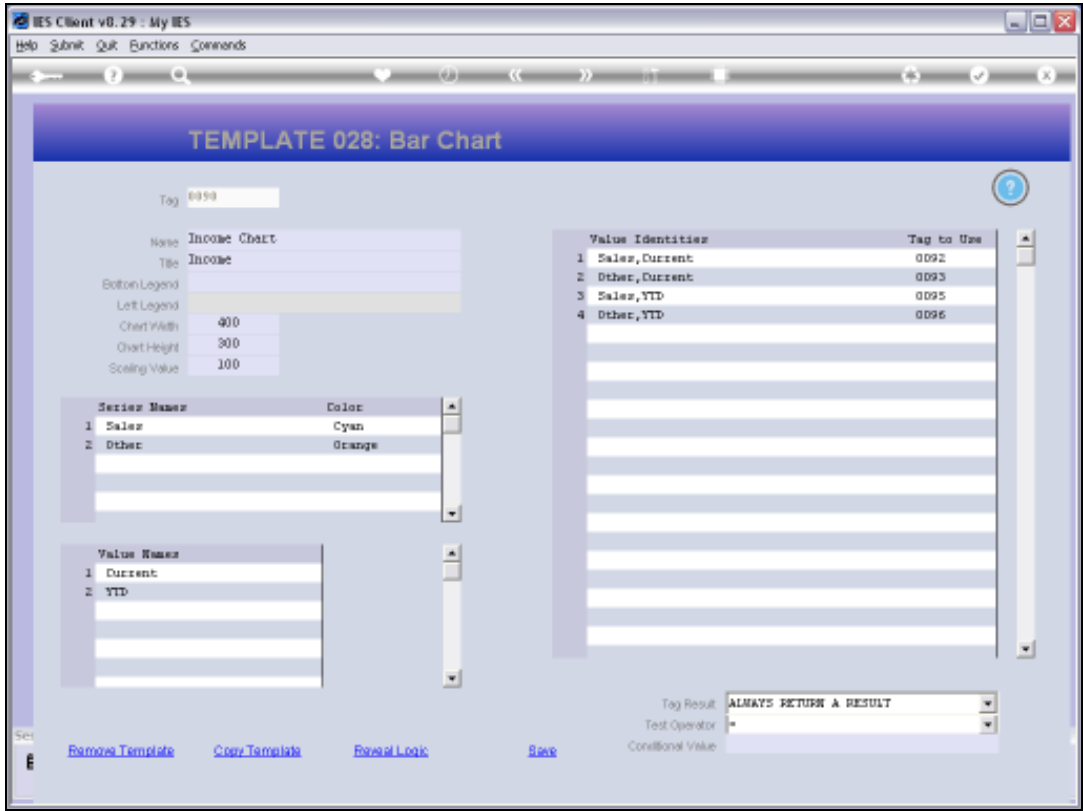
Test Operator:

Conditional Value:

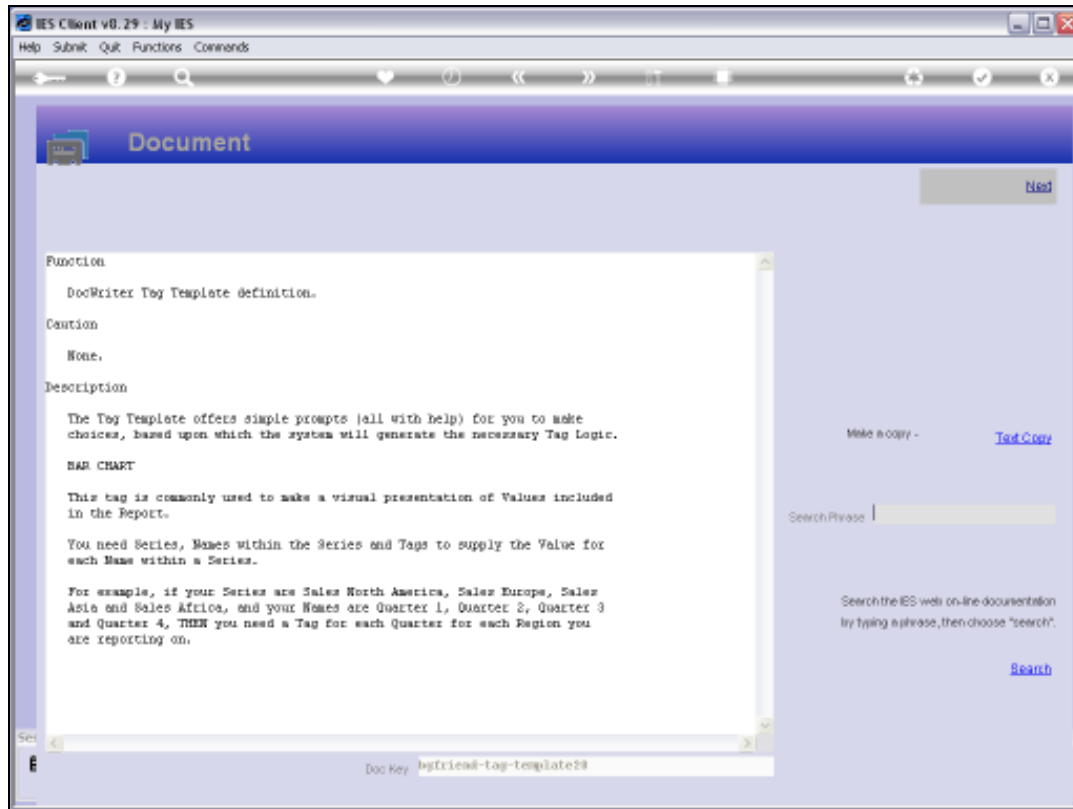
[Remove Template](#) [Copy Template](#) [Reset Logic](#) [Save](#)

Slide 16

Slide notes: We can specify Width, Height and Scaling Values in the allowed ranges.

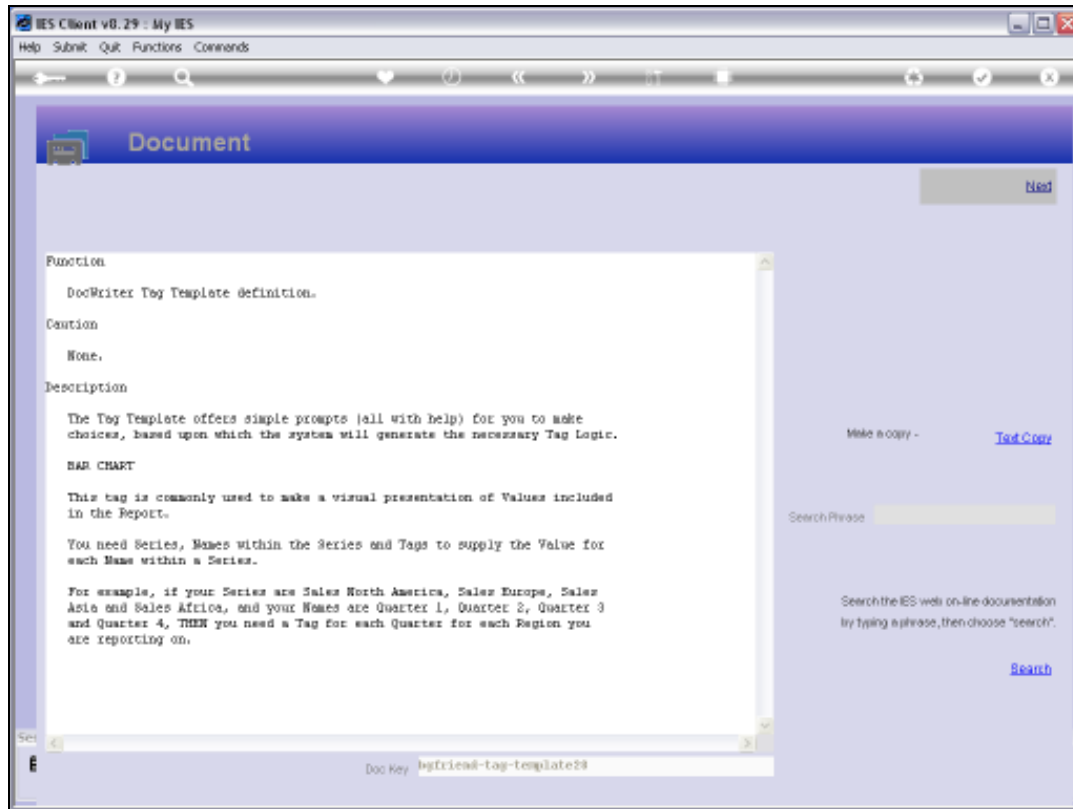


Slide 17
Slide notes:



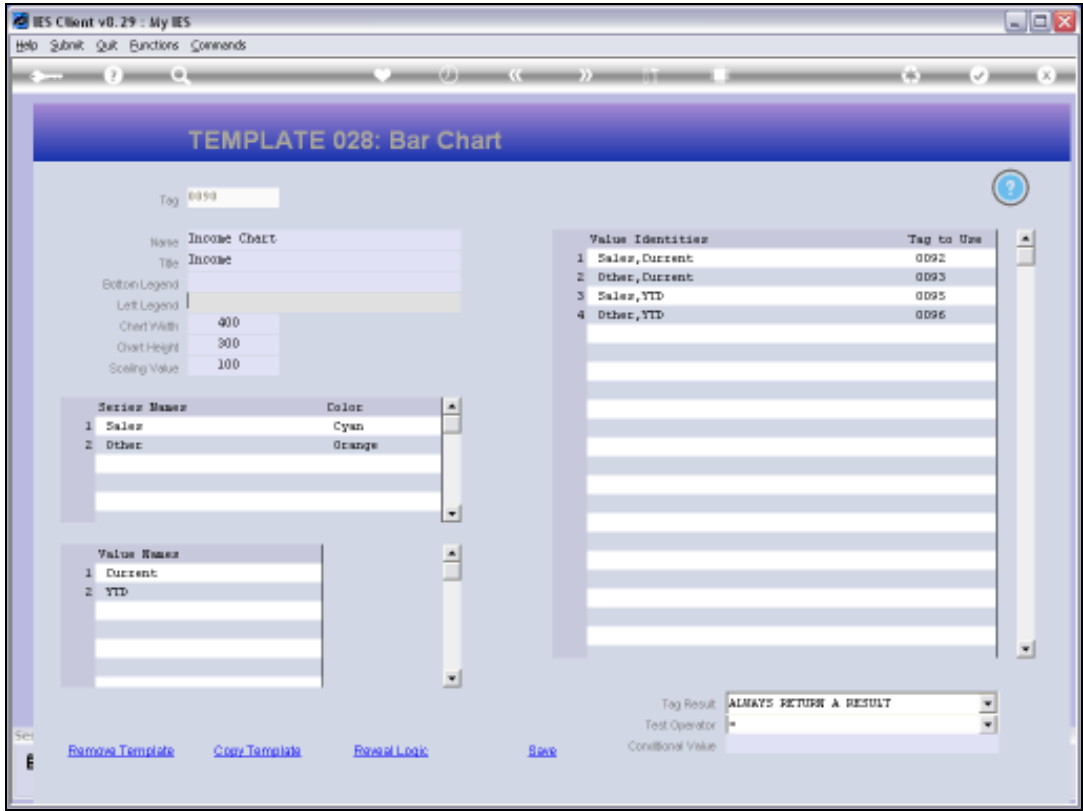
Slide 18

Slide notes:

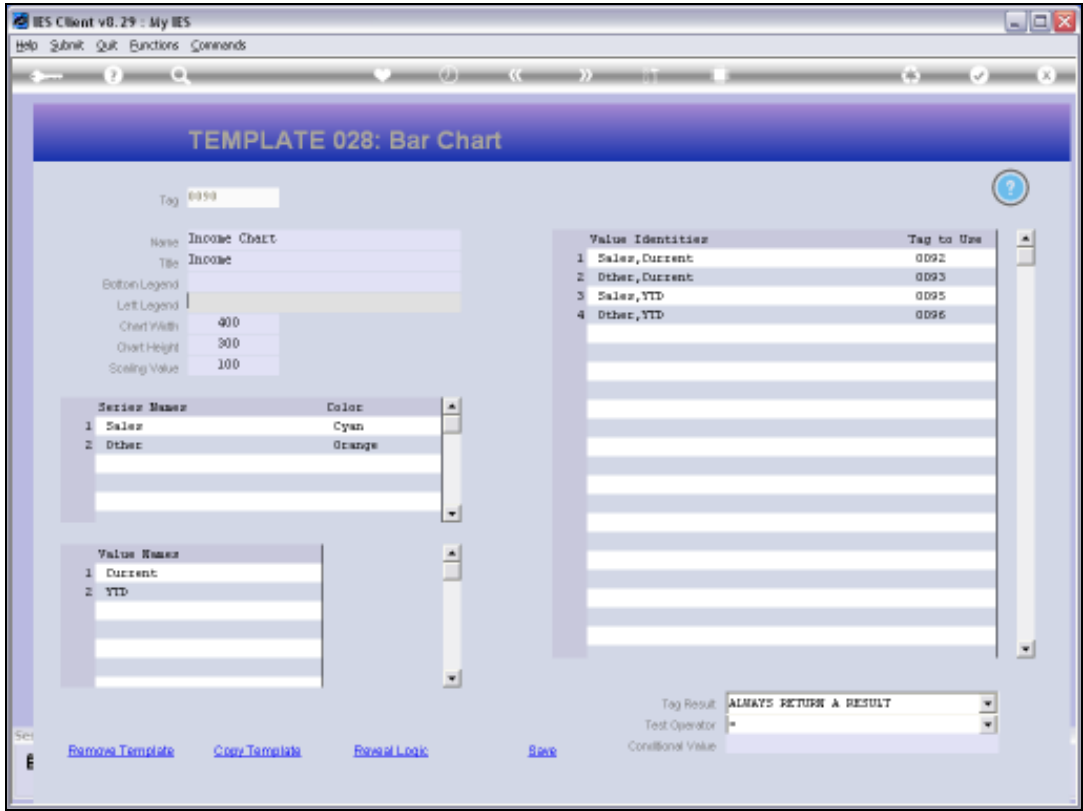


Slide 19

Slide notes: The Help explains the required components for this type of Chart.



Slide 20
Slide notes:



Slide 21
Slide notes:

IES Client v8.29 : My IES

Help Submit Quit Functions Commands

TEMPLATE 028: Bar Chart

Tag: 0090

Name: Income Chart

Title: Income

Bottom Legend:

Left Legend:

Chart Width: 400

Chart Height: 300

Scaling Value: 100

Series Name	Color
1 Sales	Cyan
2 Other	Orange

Next Prev Add Del Edit Del

Value Name
1 Current
2 YTD

Value Identifiers	Tag to Use
1 Sales,Current	0092
2 Other,Current	0093
3 Sales,YTD	0095
4 Other,YTD	0096

Tag Result: ALWAYS RETURN A RESULT

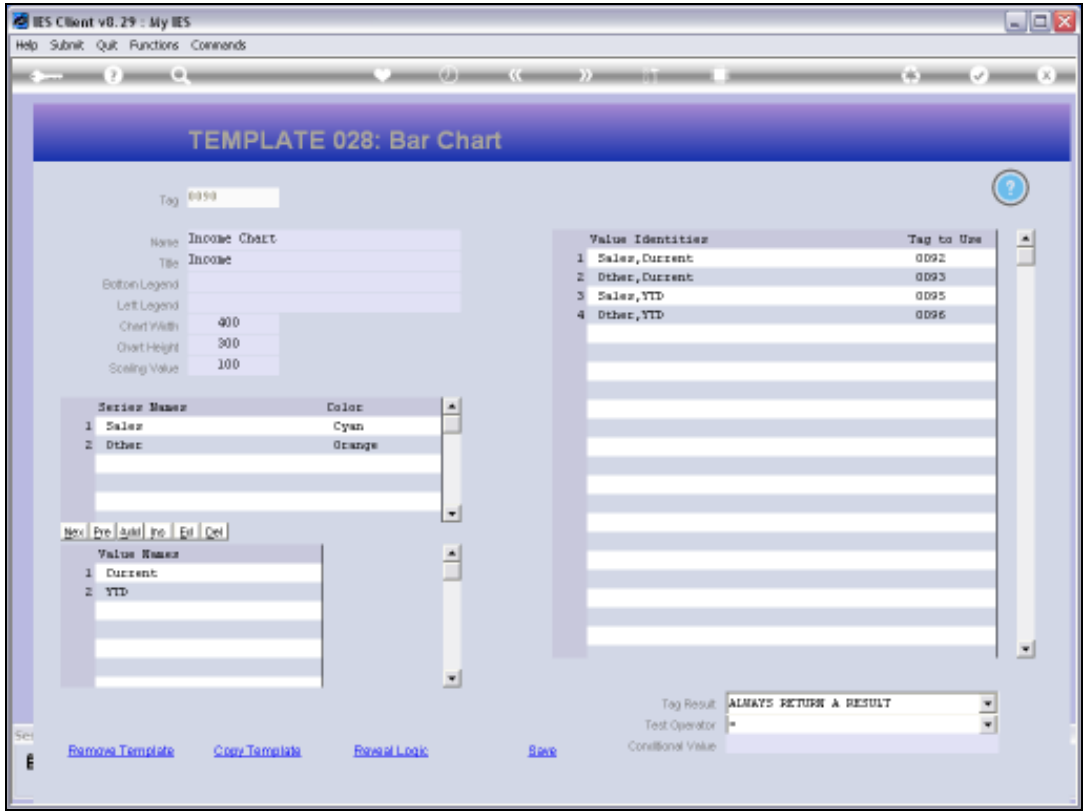
Test Operator:

Conditional Value:

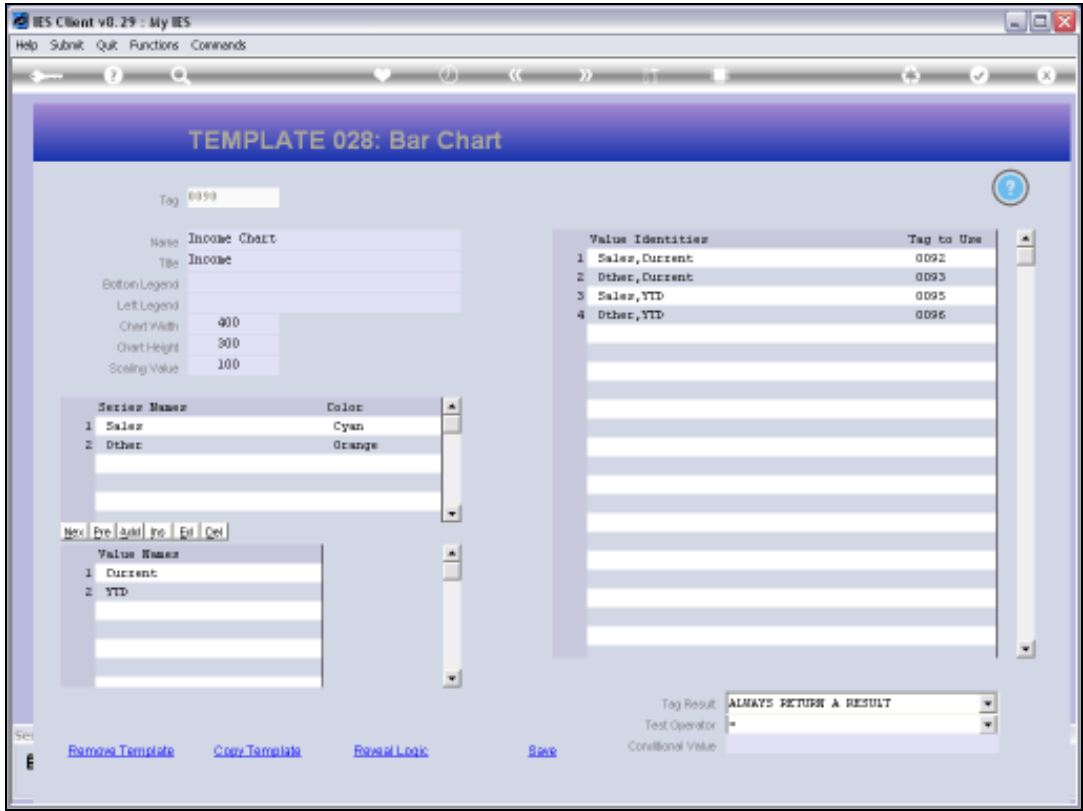
Remove Template Copy Template Reset Logic Save

Slide 22

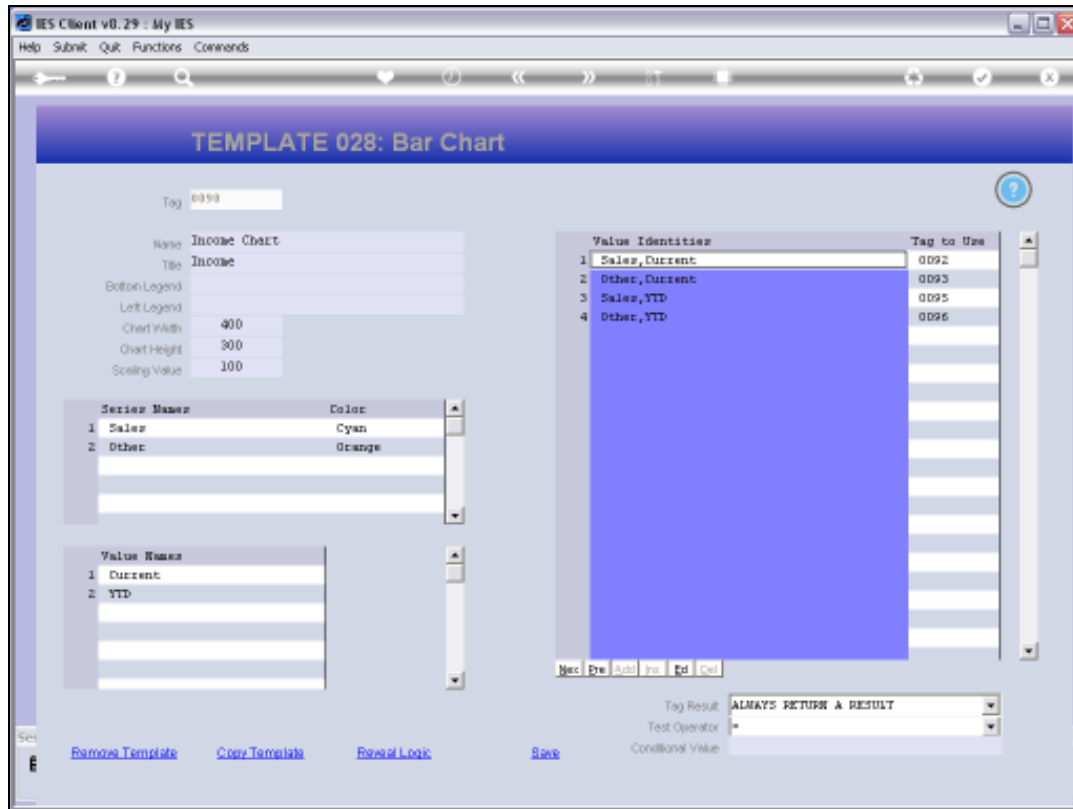
Slide notes: There are always 1 or more Series, and 1 or more Value Names within the Series. For each Series, the system will use each Value Name and create a Value Identity. We need to state a Tag that will provide the Value for each Identity that is created.



Slide 23
Slide notes:

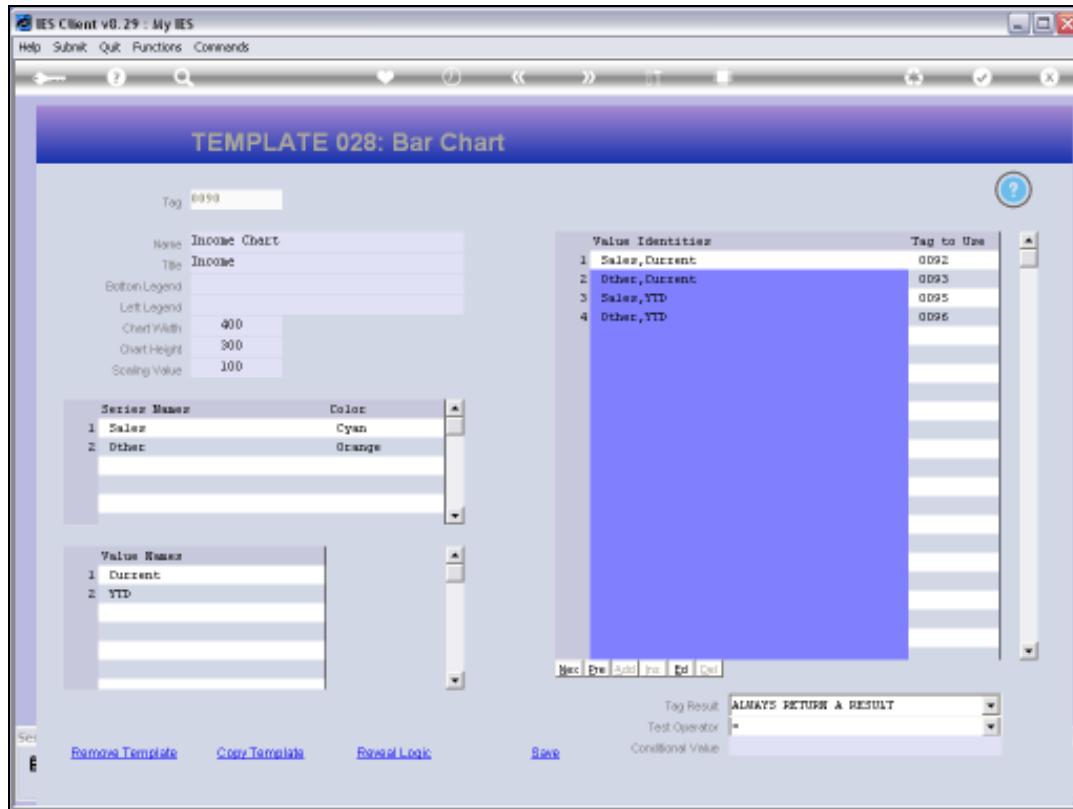


Slide 24
Slide notes:



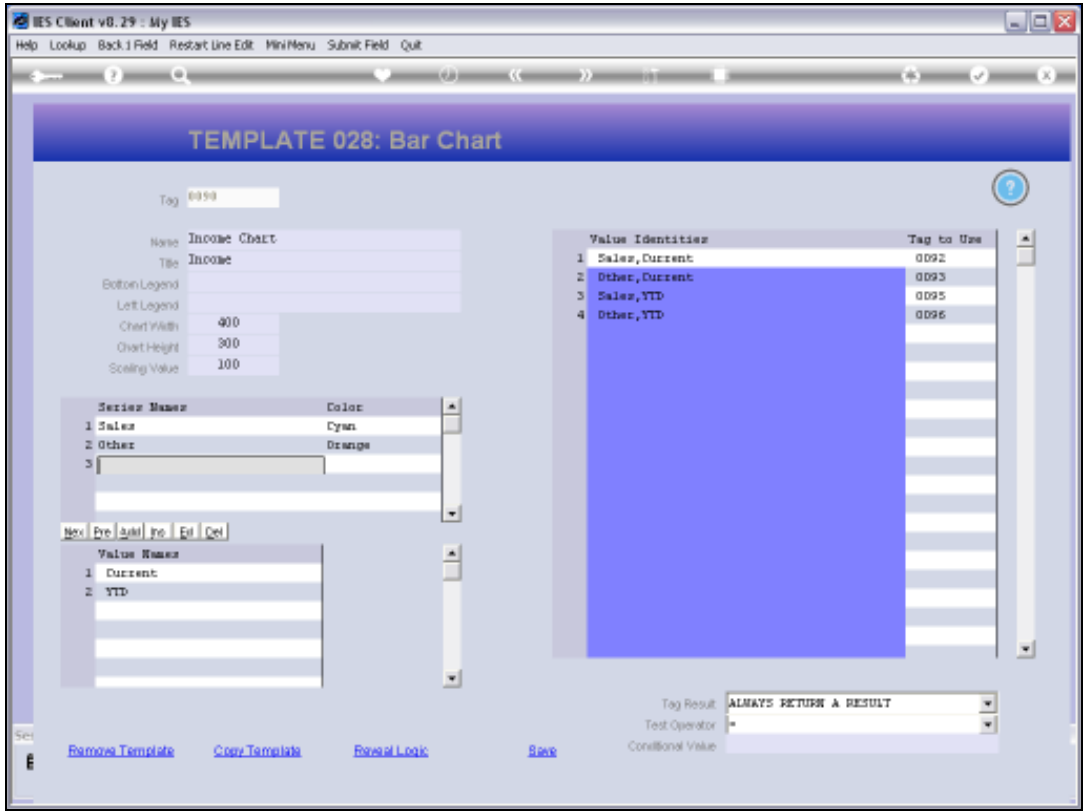
Slide 25

Slide notes:



Slide 26

Slide notes: If we create another Series or Value Name, we will see the new Identities appearing automatically at the right, and then we need Tag Numbers to provide those Value answers.



Slide 27
Slide notes:

IES Client v8.29 : My IES

Help Lookup Back Field Restart Line Edit Mini Menu Submit Field Quit

TEMPLATE 028: Bar Chart

Tag: 0090

Name: Income Chart
Title: Income
Bottom Legend:
Left Legend:
Chart Width: 400
Chart Height: 300
Scaling Value: 100

Series Names: Color:
1 Sales Cyan
2 Other Orange
3

Value Names:
1 Current
2 YTD

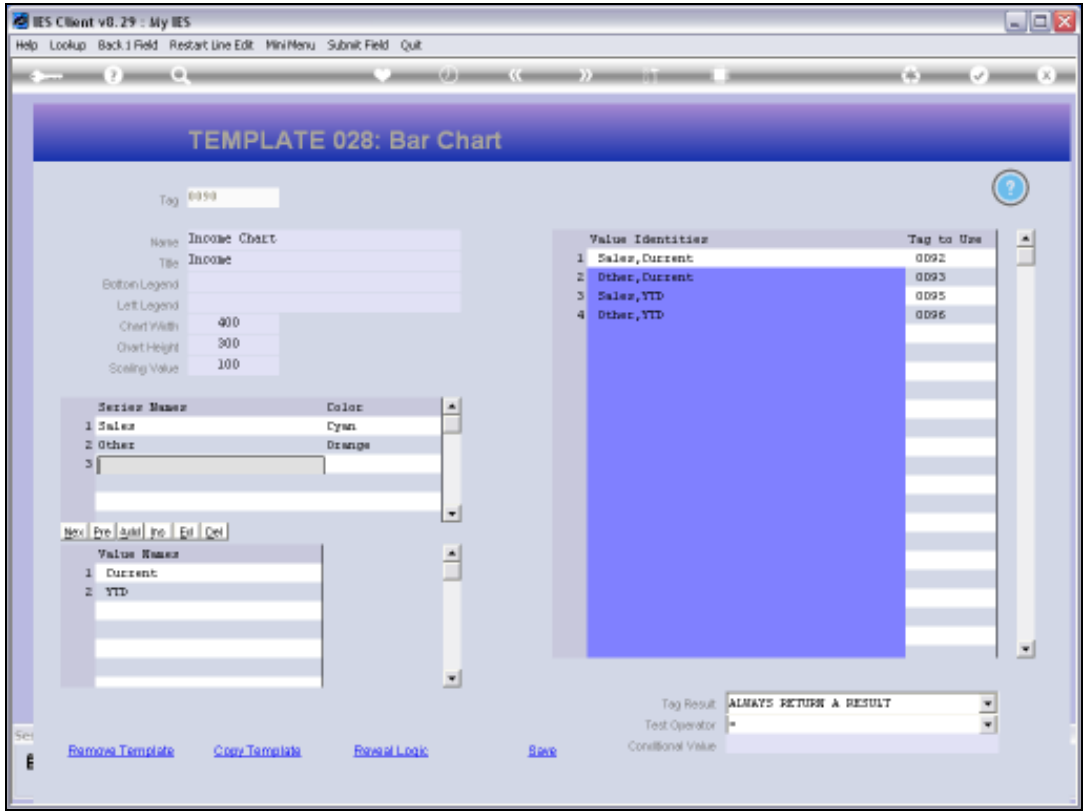
Value Identifiers: Tag to Use:
1 Sales, Current 0092
2 Other, Current 0093
3 Sales, YTD 0095
4 Other, YTD 0096

Tag Result: ALWAYS RETURN A RESULT
Test Operator:
Conditional Value:

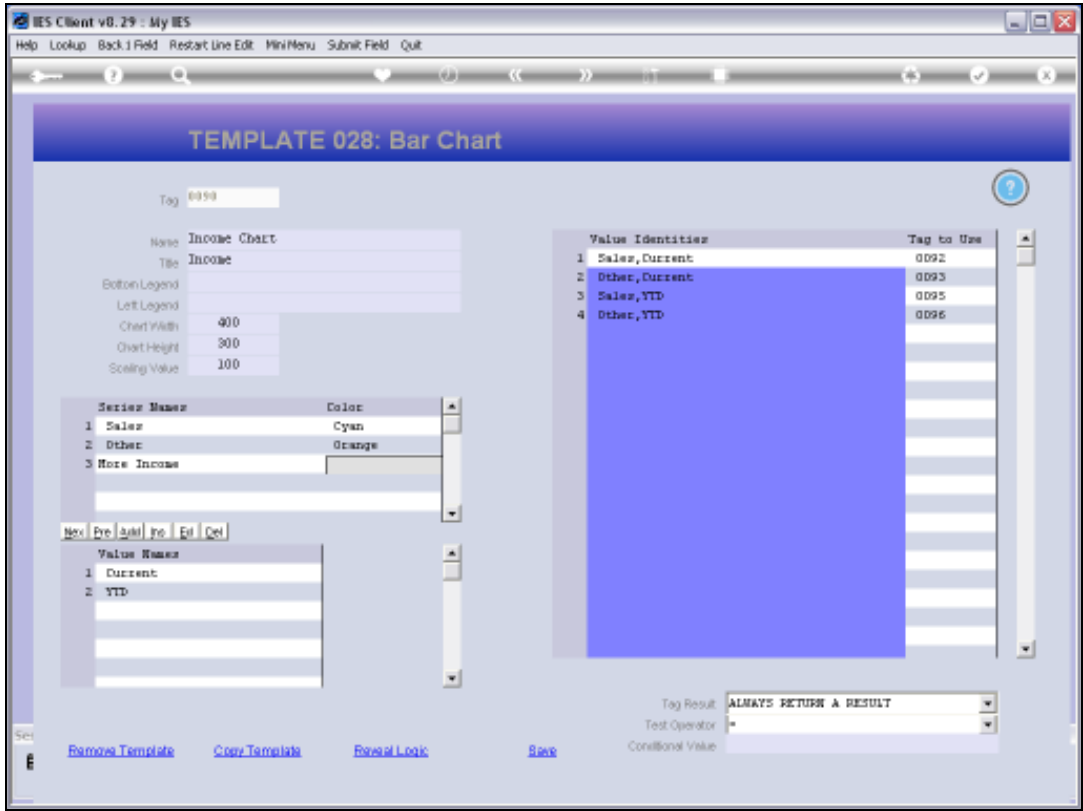
[Remove Template](#) [Copy Template](#) [Reveal Logic](#) [Save](#)

Slide 28

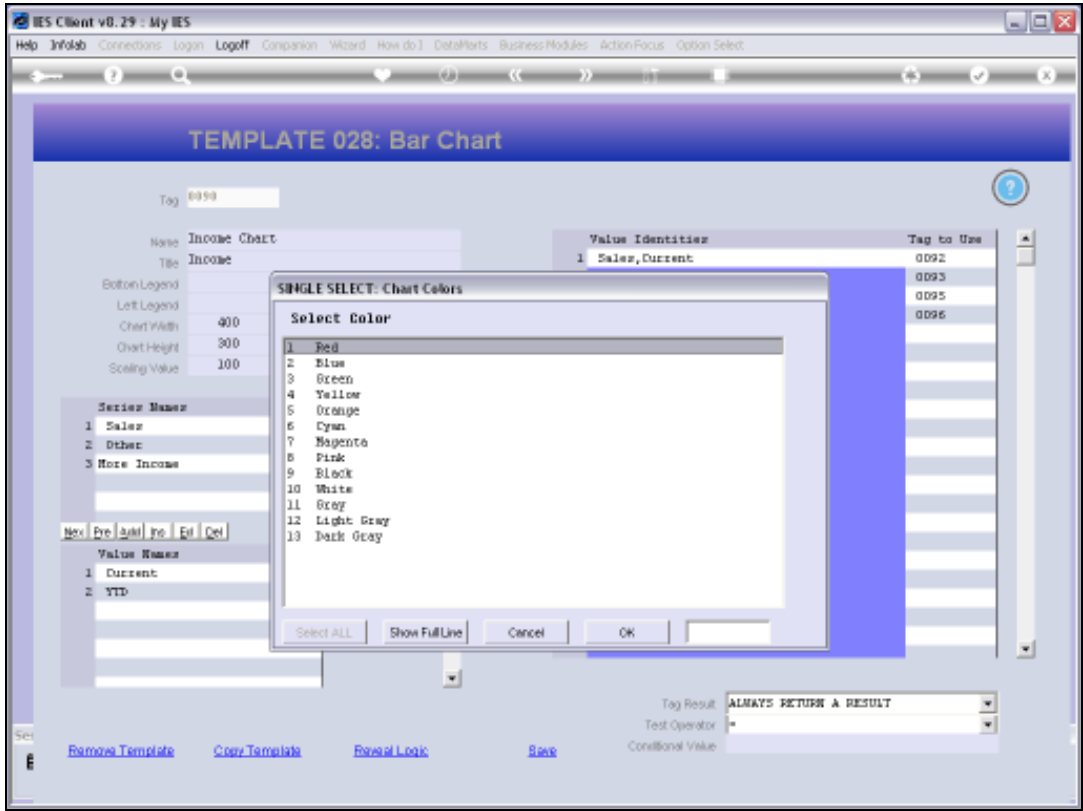
Slide notes:



Slide 29
Slide notes:



Slide 30
Slide notes:



Slide 31
Slide notes:

IES Client v8.29 : My IES

Help InfoLab Connections Login Logout Companion Wizard How do I DataParts Business Modules ActionFocus Option Select

TEMPLATE 028: Bar Chart

Tag: 0090

Name: Income Chart
Title: Income
Bottom Legend:
Left Legend:
Chart Width: 400
Chart Height: 300
Scaling Value: 100

Series Name	Color
1 Sales	Cyan
2 Other	Orange
3 More Income	

Next Prev Add Info Edit Del

Value Name
1 Current
2 YTD

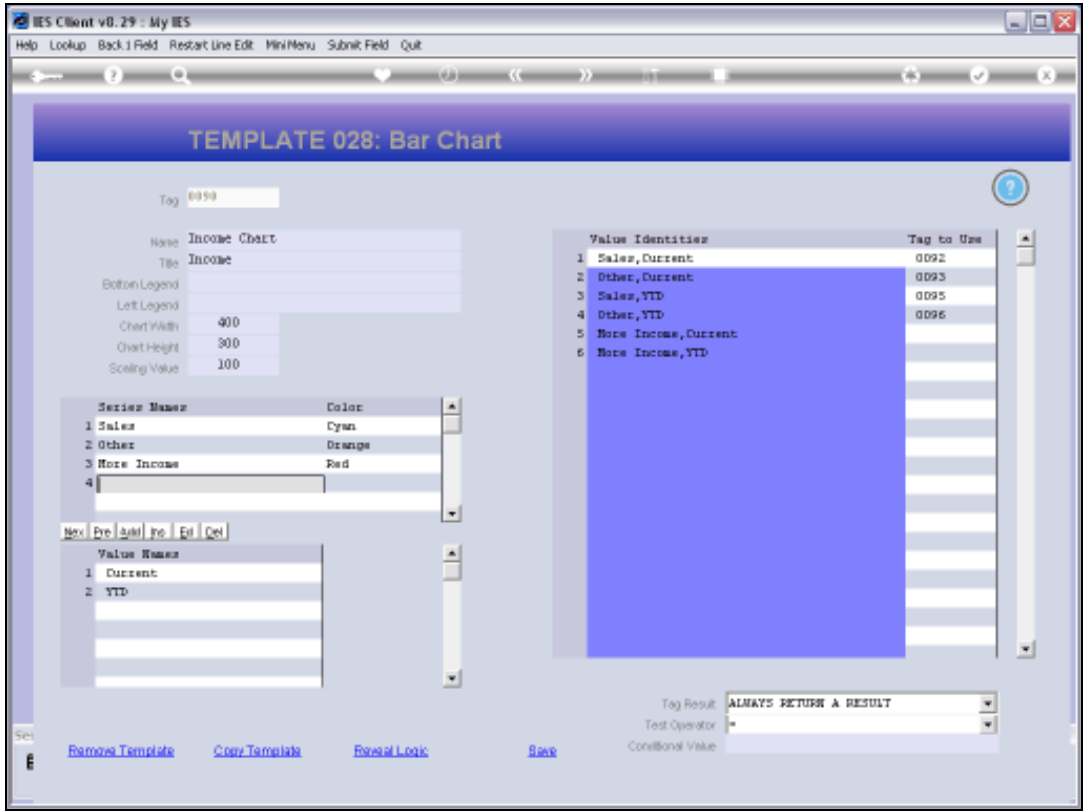
Value Identifiers	Tag to Use
1 Sales, Current	0092
2 Other, Current	0093
3 Sales, YTD	0095
4 Other, YTD	0096

Tag Result: ALWAYS RETURN A RESULT
Test Operator:
Conditional Value:

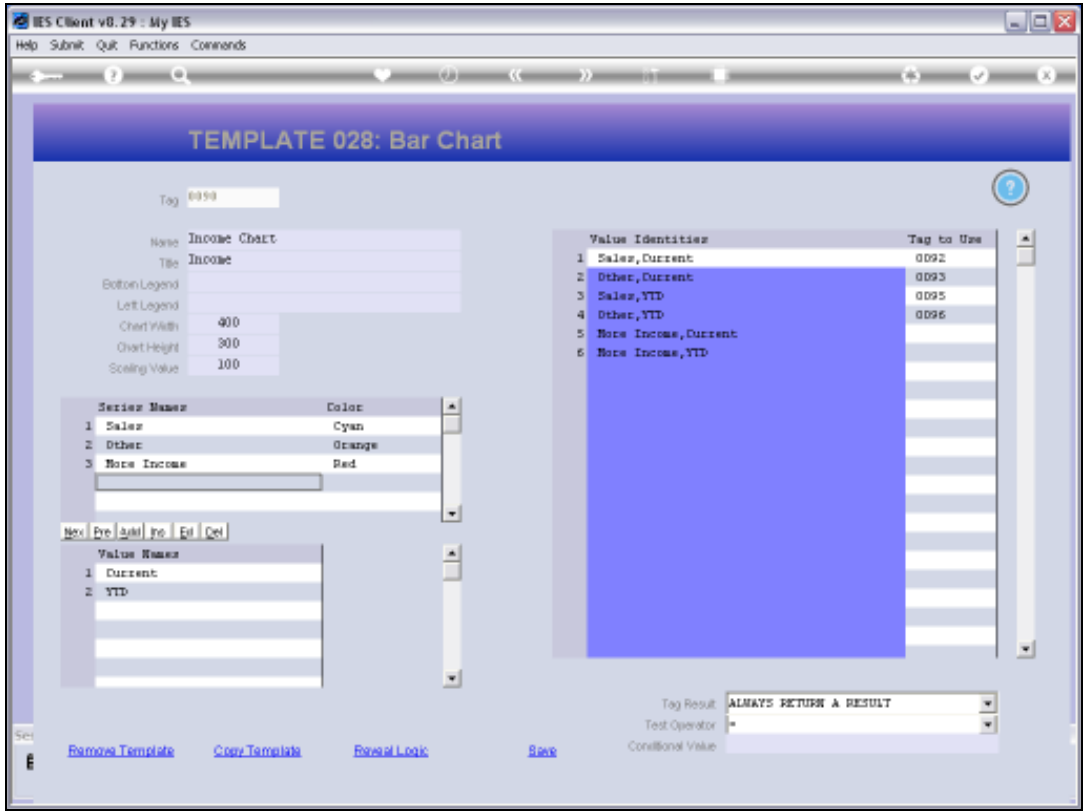
[Remove Template](#) [Copy Template](#) [Reveal Logic](#) [Save](#)

Slide 32

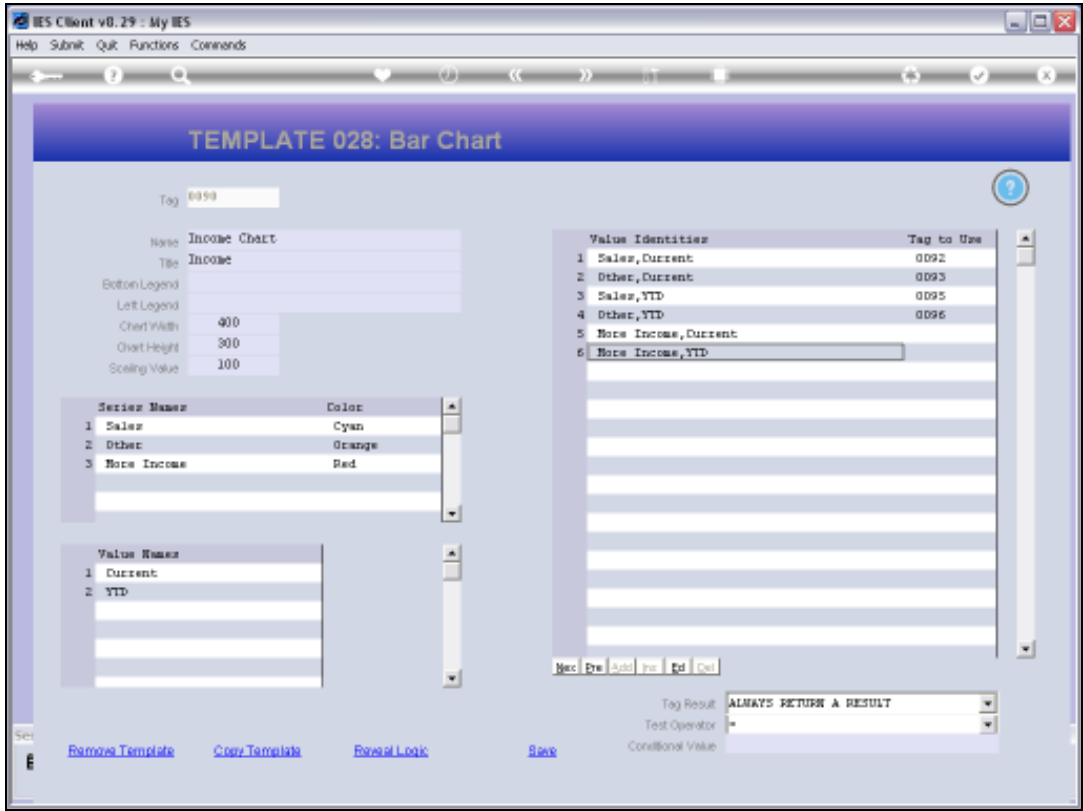
Slide notes:



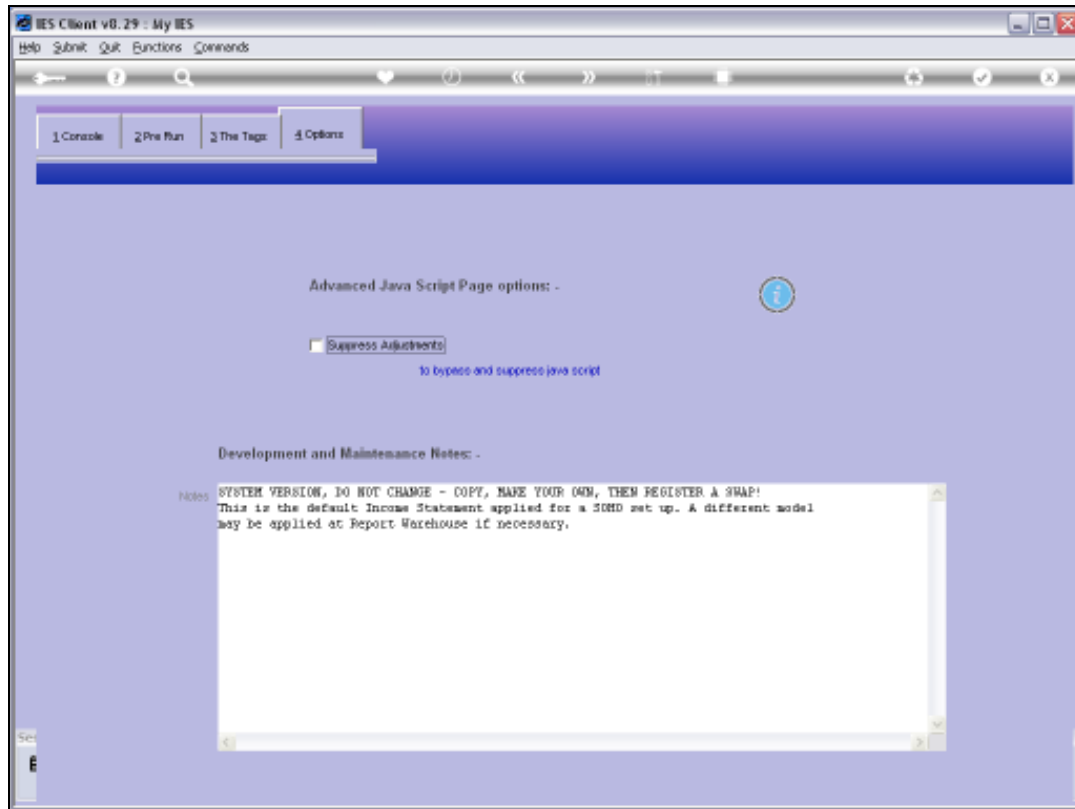
Slide 33
Slide notes:



Slide 34
Slide notes:

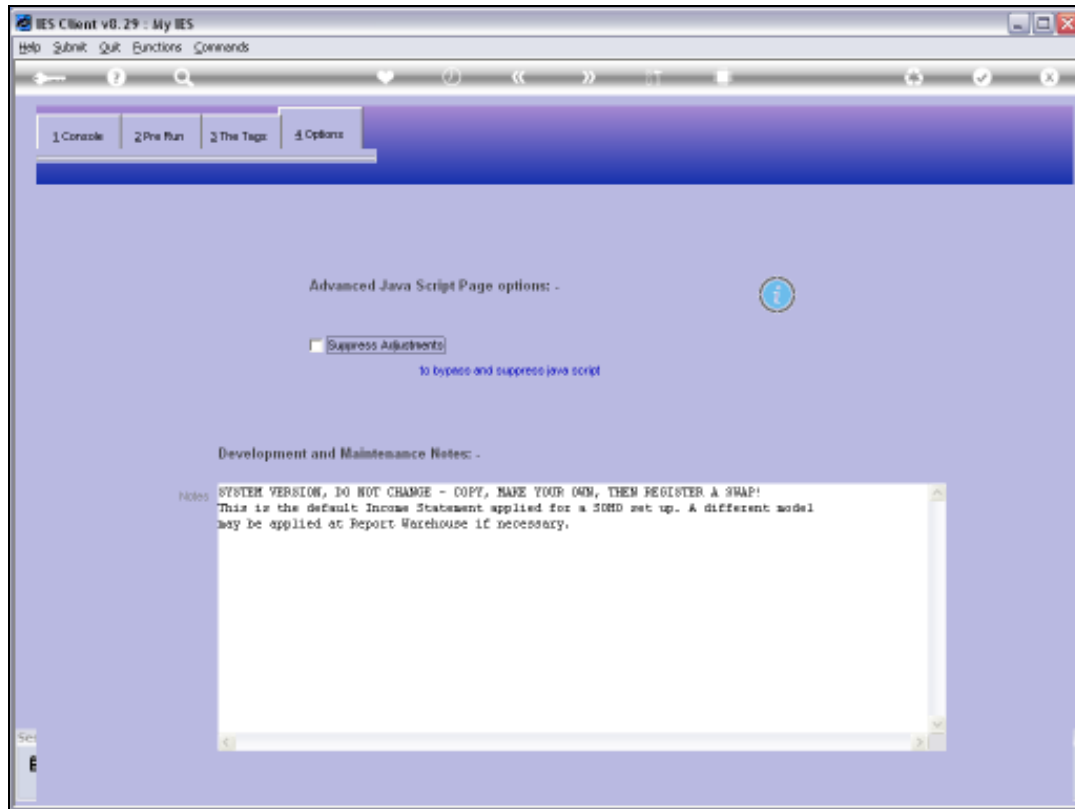


Slide 35
Slide notes:



Slide 36

Slide notes: As a reminder, we note that when we use Charts in a Report, then the Java Script must NOT be suppressed.



Slide 37

Slide notes: