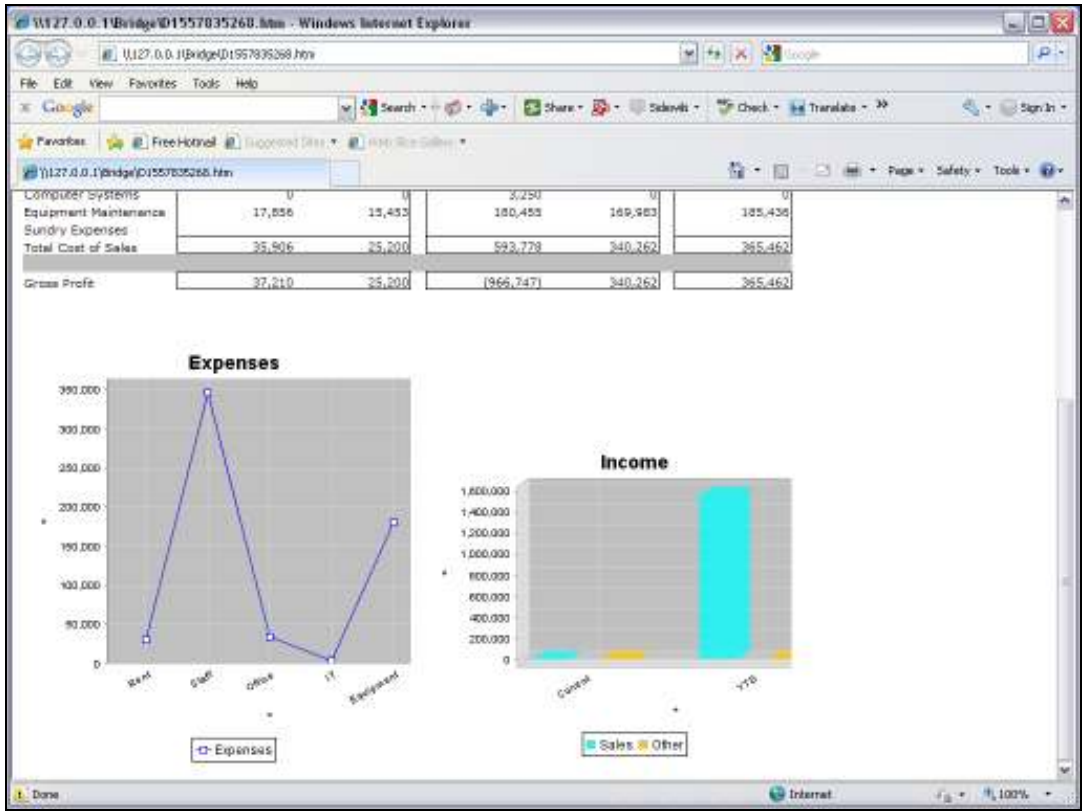


Slide 1

Slide notes: A Line Graph can easily be included in a Report.



Slide 2
Slide notes:

The screenshot shows a web browser window with the address bar displaying 'http://127.0.0.1:5578/bridge/155783558.htm'. The browser's Favorites bar shows 'Free Hotmail' and 'Support Site'. The main content area displays a financial statement table with the following data:

Rent and Utilities	[0029]	[0030]	[0031]	[0032]	[0033]	
Bad Debts	[0034]	[0035]	[0036]	[0037]	[0038]	
Staff Costs	[0039]	[0040]	[0041]	[0042]	[0043]	
Office Costs	[0044]	[0045]	[0046]	[0047]	[0048]	
Audit Fees	[0049]	[0050]	[0051]	[0052]	[0053]	
Computer Systems	[0054]	[0055]	[0056]	[0057]	[0058]	
Equipment Maintenance	[0059]	[0060]	[0061]	[0062]	[0063]	
Sundry Expenses	[0064]	[0065]	[0066]	[0067]	[0068]	
Total Cost of Sales	[0069]	[0070]	[0071]	[0072]	[0073]	
[0084]						
[0085]Gross Profit	[0074]	[0075]	[0076]	[0077]	[0078]	[0086]
[0087]Gross Loss	[0079]	[0080]	[0081]	[0082]	[0083]	[0088]
[0097] [0091] [0092] [0093] [0094] [0095] [0096] [0098]						

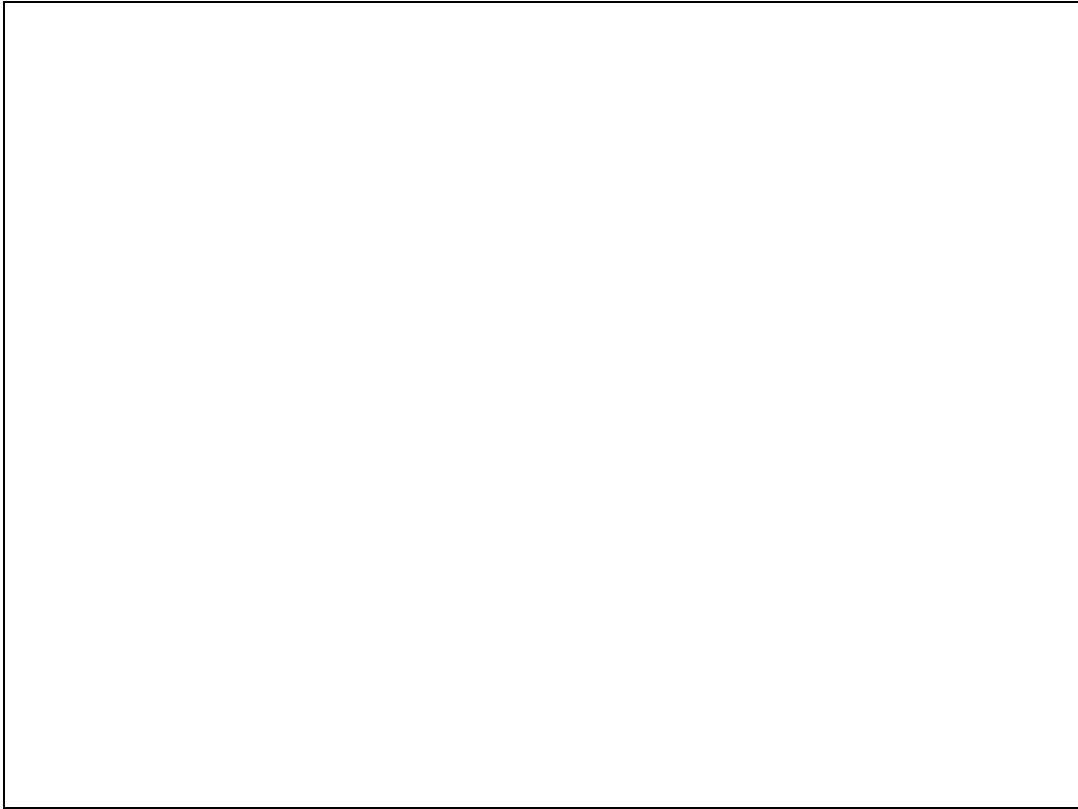
The status bar at the bottom shows 'Done' and 'Internet'.

Slide 3

Slide notes: First, we look at the Layout, where the Chart is represented by a single Tag, but the important point to note is the area that has been reserved for the Line Graph display in the result. It is necessary to provide sufficient space for the Graph, especially when using a spreadsheet to do the layout. In which case we need to combine and merge a number of cells to make the Graph area a single cell space that is adequate in size for the Graph to display properly.

Rent and Utilities	[0029]	[0030]	[0031]	[0032]	[0033]	
Bad Debts	[0034]	[0035]	[0036]	[0037]	[0038]	
Staff Costs	[0039]	[0040]	[0041]	[0042]	[0043]	
Office Costs	[0044]	[0045]	[0046]	[0047]	[0048]	
Audit Fees	[0049]	[0050]	[0051]	[0052]	[0053]	
Computer Systems	[0054]	[0055]	[0056]	[0057]	[0058]	
Equipment Maintenance	[0059]	[0060]	[0061]	[0062]	[0063]	
Sundry Expenses	[0064]	[0065]	[0066]	[0067]	[0068]	
Total Cost of Sales	[0069]	[0070]	[0071]	[0072]	[0073]	
[0084]						
[0085]Gross Profit	[0074]	[0075]	[0076]	[0077]	[0078]	[0086]
[0087]Gross Loss	[0079]	[0080]	[0081]	[0082]	[0083]	[0088]
[0097] [0091] [0092] [0093] [0094] [0095] [0096] [0098]						
[0099]		[0090]				

Slide 4
Slide notes:



Slide 5

Slide notes:

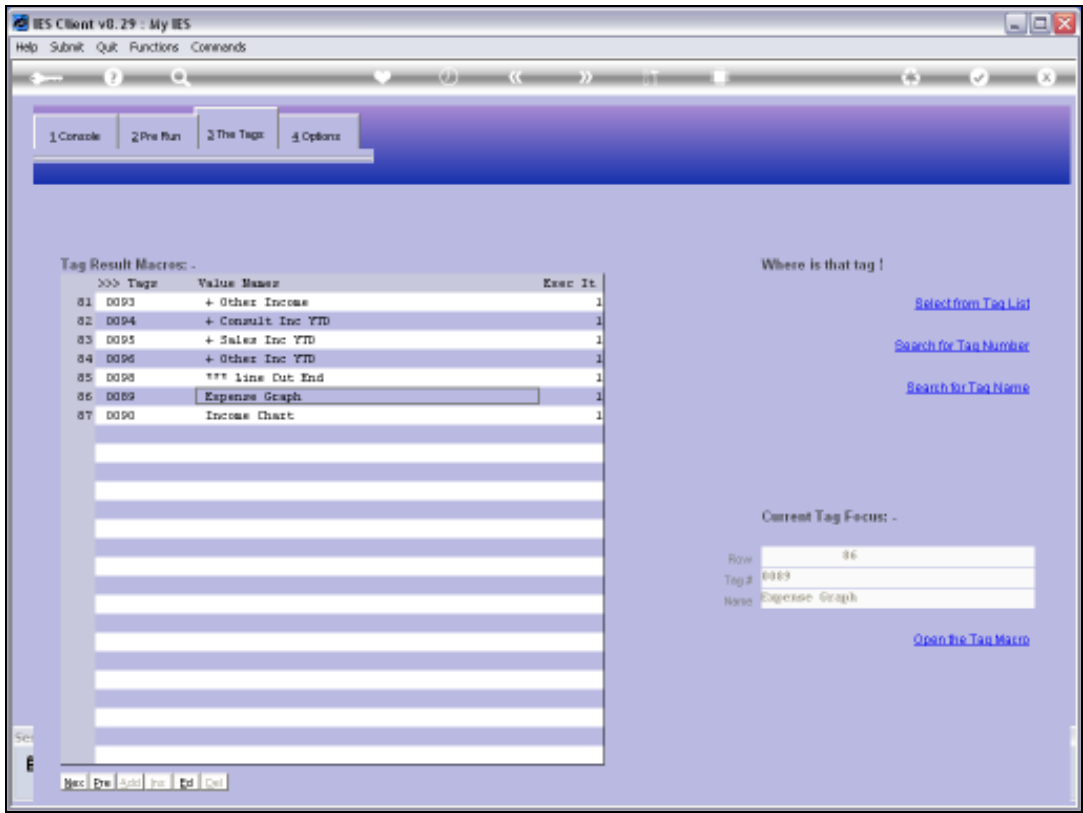
Rent and Utilities	(0029)	(0030)	(0031)	(0032)	(0033)	
Bad Debts	(0034)	(0035)	(0036)	(0037)	(0038)	
Staff Costs	(0039)	(0040)	(0041)	(0042)	(0043)	
Office Costs	(0044)	(0045)	(0046)	(0047)	(0048)	
Audit Fees	(0049)	(0050)	(0051)	(0052)	(0053)	
Computer Systems	(0054)	(0055)	(0056)	(0057)	(0058)	
Equipment Maintenance	(0059)	(0060)	(0061)	(0062)	(0063)	
Sundry Expenses	(0064)	(0065)	(0066)	(0067)	(0068)	
Total Cost of Sales	(0069)	(0070)	(0071)	(0072)	(0073)	
(0084)						
(0085)Gross Profit	(0074)	(0075)	(0076)	(0077)	(0078)	(0086)
(0087)Gross Loss	(0079)	(0080)	(0081)	(0082)	(0083)	(0088)
(0097) (0091) (0092) (0093) (0094) (0095) (0096) (0098)						

Slide 6
Slide notes:



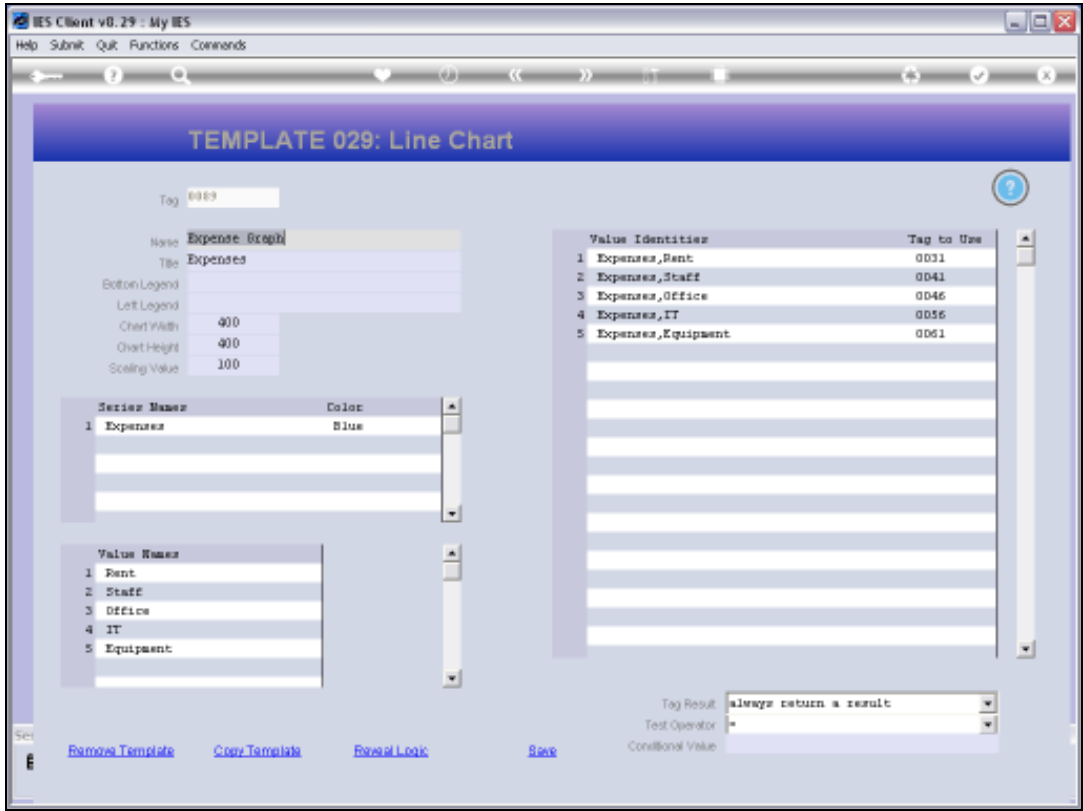
Slide 7

Slide notes:



Slide 8

Slide notes:



Slide 9

Slide notes:

IES Client v8.29 : My IES

Help Submit Quit Functions Commands

TEMPLATE 029: Line Chart

Tag: 0000

Name: Expense Graph

Title: Expenses

Bottom Legend:

Left Legend:

Chart Width: 400

Chart Height: 400

Scaling Value: 100

Series Names	Color
1 Expenses	Blue

Value Names
1 Rent
2 Staff
3 Office
4 IT
5 Equipment

Value Identifiers	Tag to Use
1 Expenses,Rent	0031
2 Expenses,Staff	0041
3 Expenses,Office	0046
4 Expenses,IT	0056
5 Expenses,Equipment	0061

Tag Result: always return a result

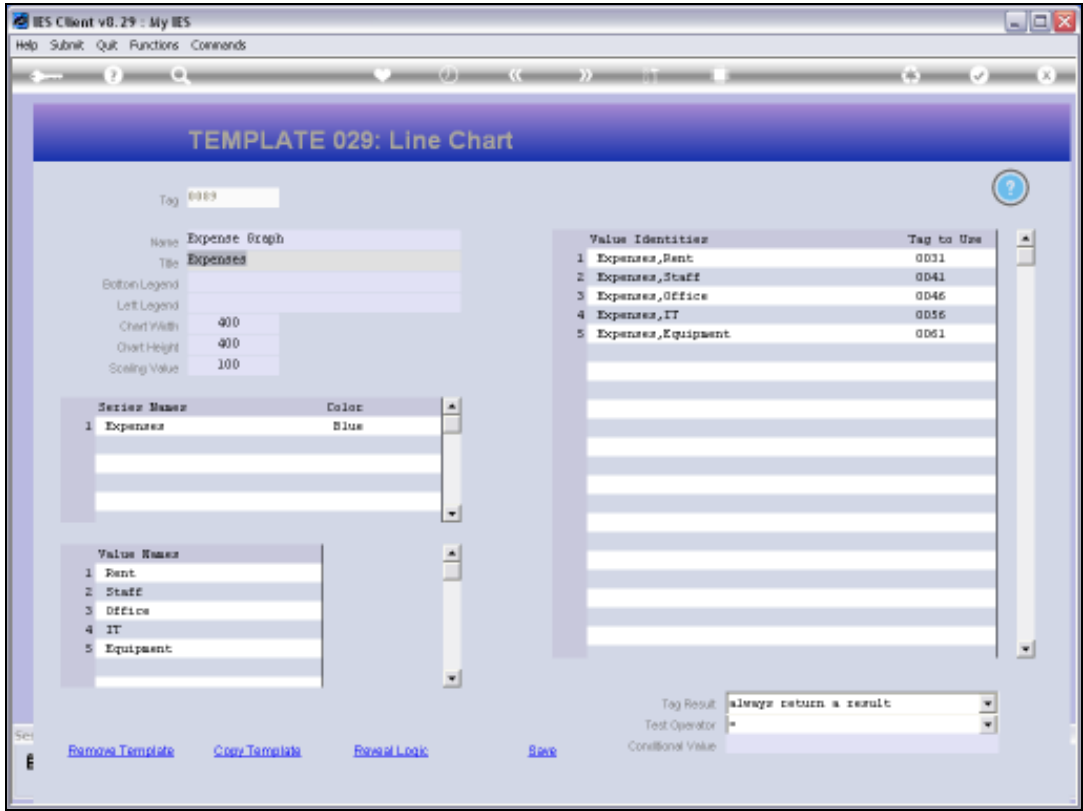
Test Operator: *

Conditional Value:

[Remove Template](#) [Copy Template](#) [Reveal Logic](#) [Save](#)

Slide 10

Slide notes: A Line Graph needs a Title, and optionally we may add Bottom and Left Legends.



Slide 11
Slide notes:

IES Client v8.29 : My IES

Help Submit Quit Functions Commands

TEMPLATE 029: Line Chart

Tag: 0009

Name: Expense Graph

Title: Expenses

Bottom Legend: ☐

Left Legend: ☐

Chart Width: 400

Chart Height: 400

Scaling Value: 100

Series Name	Color
1 Expenses	Blue

Value Name
1 Rent
2 Staff
3 Office
4 IT
5 Equipment

Value Identifiers	Tag to Use
1 Expenses,Rent	0031
2 Expenses,Staff	0041
3 Expenses,Office	0046
4 Expenses,IT	0056
5 Expenses,Equipment	0061

Tag Result: always return a result

Test Operator: *

Conditional Value:

[Remove Template](#) [Copy Template](#) [Reveal Logic](#) [Save](#)

Slide 12

Slide notes:

IES Client v8.29 : My IES

Help Submit Quit Functions Commands

TEMPLATE 029: Line Chart

Tag: 0009

Name: Expense Graph

Title: Expenses

Bottom Legend:

Left Legend:

Chart Width: 400

Chart Height: 400

Scaling Value: 100

Series Names	Color
1 Expenses	Blue

Value Names:

- 1 Rent
- 2 Staff
- 3 Office
- 4 IT
- 5 Equipment

Value Identifiers	Tag to Use
1 Expenses,Rent	0031
2 Expenses,Staff	0041
3 Expenses,Office	0046
4 Expenses,IT	0056
5 Expenses,Equipment	0061

Tag Result: always return a result

Test Operator:

Conditional Value:

Remove Template Copy Template Reveal Logic Save

Slide 13

Slide notes: We may also adjust the default Width, Height and Scaling Values.

IES Client v8.29 : My IES

Help Submit Quit Functions Commands

← ? 🔍 ♥ ⌚ ⏪ ⏩ 📄 📁

TEMPLATE 029: Line Chart

Tag: 0009

Name: Expense Graph
Title: Expenses
Bottom Legend:
Left Legend:
Chart Width: 400
Chart Height: 400
Scaling Value: 100

Series Name	Color
1 Expenses	Blue

Value Names

1 Rent
2 Staff
3 Office
4 IT
5 Equipment

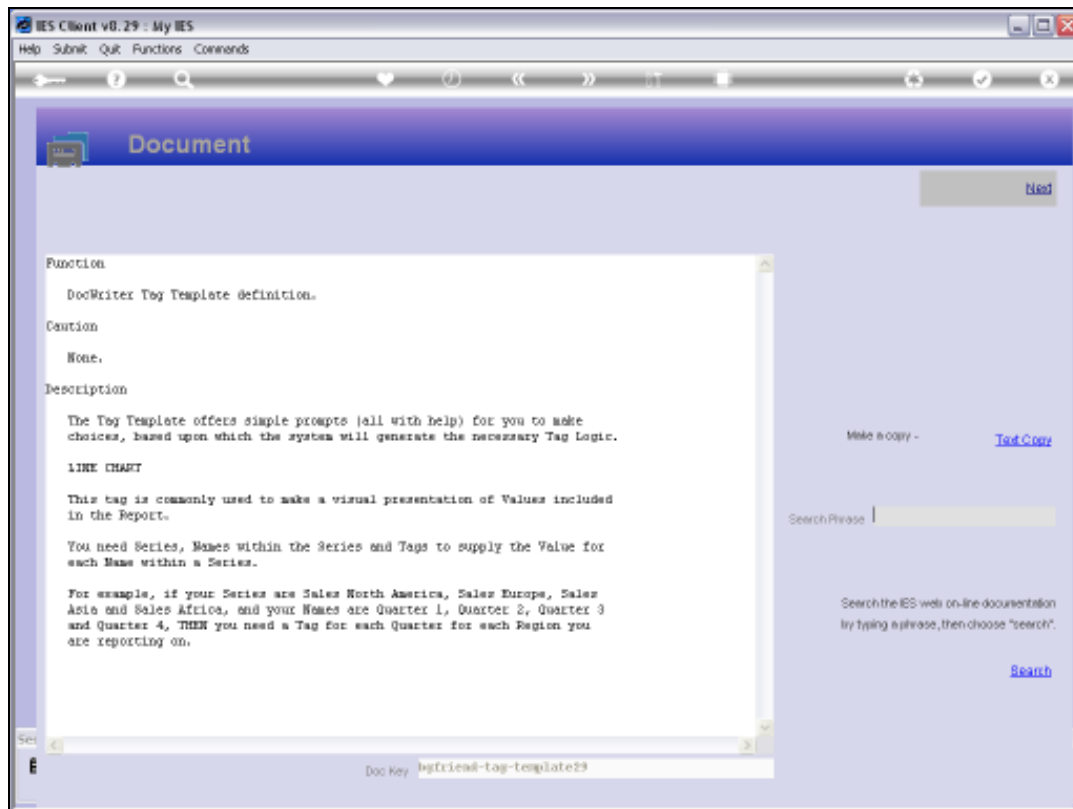
Value Identifiers	Tag to Use
1 Expenses,Rent	0031
2 Expenses,Staff	0041
3 Expenses,Office	0046
4 Expenses,IT	0056
5 Expenses,Equipment	0061

Tag Result: always return a result
Test Operator: =
Conditional Value:

[Remove Template](#) [Copy Template](#) [Reveal Logic](#) [Save](#)

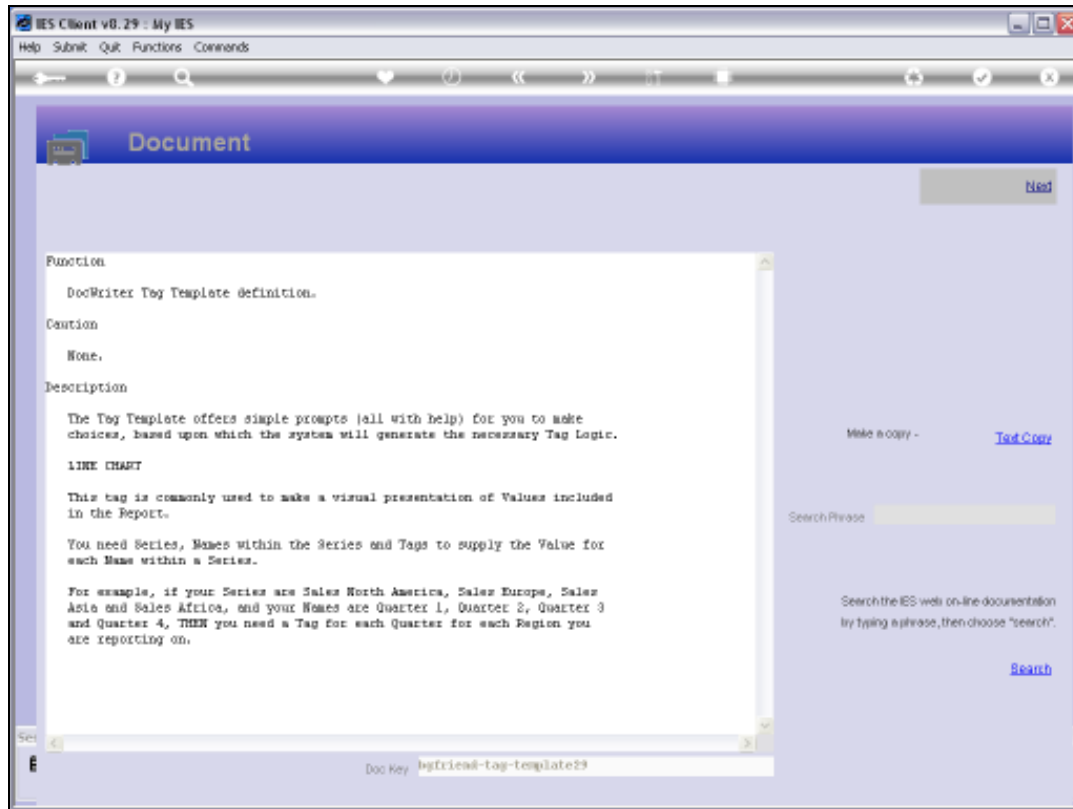
Slide 14

Slide notes:



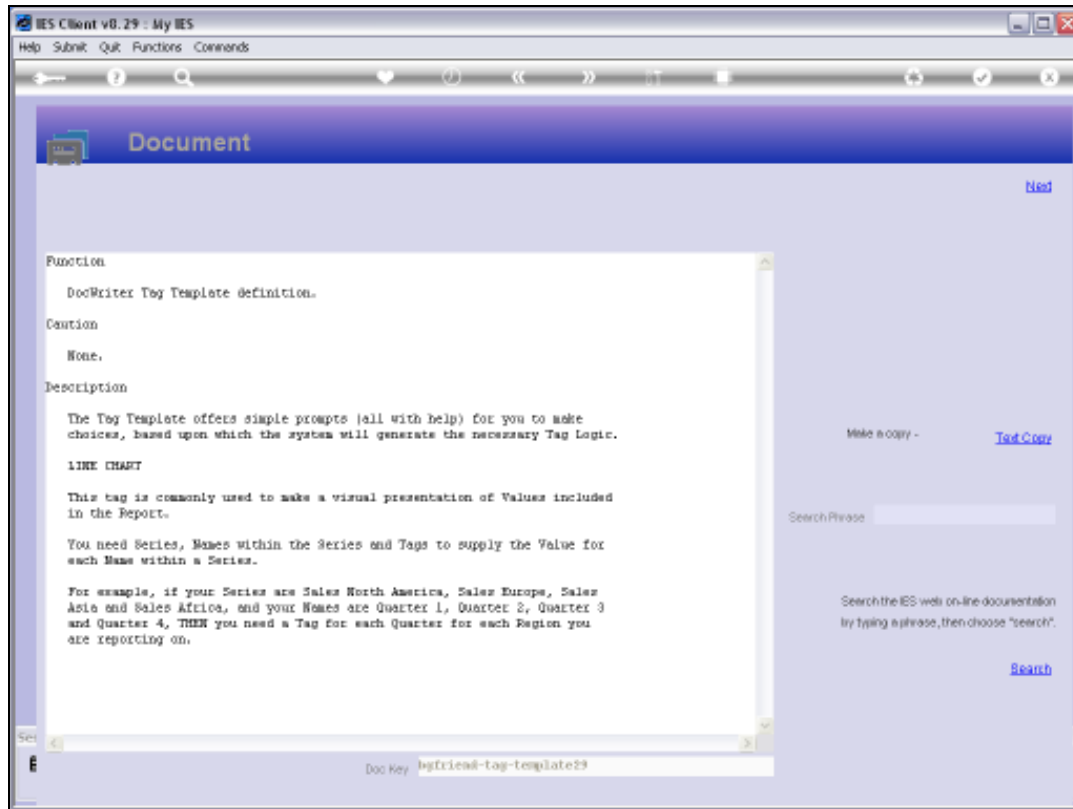
Slide 15

Slide notes: The Help explains the required components to display a Line Graph in the Report.



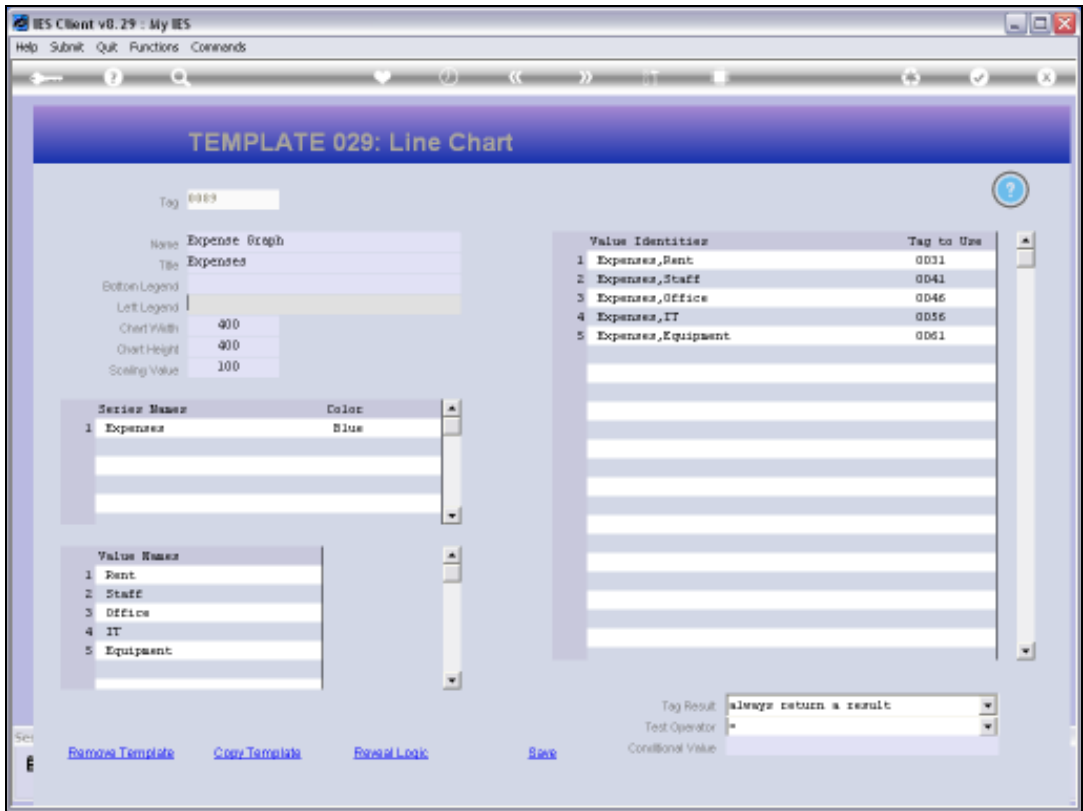
Slide 16

Slide notes:



Slide 17

Slide notes:



Slide 18
Slide notes:

IES Client v8.29 : My IES

Help Submit Quit Functions Commands

TEMPLATE 029: Line Chart

Tag: 0009

Name: Expense Graph

Title: Expenses

Bottom Legend:

Left Legend:

Chart Width: 400

Chart Height: 400

Scaling Value: 100

Series Name	Color
1 Expenses	Blue

Value Name
1 Rent
2 Staff
3 Office
4 IT
5 Equipment

Value Identifiers	Tag to Use
1 Expenses,Rent	0031
2 Expenses,Staff	0041
3 Expenses,Office	0046
4 Expenses,IT	0056
5 Expenses,Equipment	0061

Tag Result: always return a result

Test Operator: *

Conditional Value:

[Remove Template](#) [Copy Template](#) [Reveal Logic](#) [Save](#)

Slide 19

Slide notes: For every Series that we state, there will be another Line in the Line Graph. We need 1 or more Series.

IES Client v8.29 : My IES

Help Submit Quit Functions Commands

TEMPLATE 029: Line Chart

Tag: 0009

Name: Expense Graph

Title: Expenses

Bottom Legend:

Left Legend:

Chart Width: 400

Chart Height: 400

Scaling Value: 100

Series Name	Color
1 Expenses	Blue

Value Name
1 Rent
2 Staff
3 Office
4 IT
5 Equipment

Value Identifiers	Tag to Use
1 Expenses,Rent	0031
2 Expenses,Staff	0041
3 Expenses,Office	0046
4 Expenses,IT	0056
5 Expenses,Equipment	0061

Tag Result: always return a result

Test Operator: *

Conditional Value:

[Remove Template](#) [Copy Template](#) [Reveal Logic](#) [Save](#)

Slide 20

Slide notes: And we also need 1 or more Value Names. A Value Name is a display point for each Series, depending on the Value provided by the designated Tag.

IES Client v8.29 : My IES

Help Submit Quit Functions Commands

← ? 🔍 ♥ ⌚ ⏪ ⏩ ⏴ ⏵ ⏶ ⏷ ⏸ ⏹ ⏺ ⏻ ⏼ ⏽ ⏾ ⏿

TEMPLATE 029: Line Chart

Tag: 0009

Name: Expense Graph

Title: Expenses

Bottom Legend:

Left Legend:

Chart Width: 400

Chart Height: 400

Scaling Value: 100

Series Name	Color
1 Expenses	Blue

Value Name
1 Rent
2 Staff
3 Office
4 IT
5 Equipment

Value Identifiers	Tag to Use
1 Expenses,Rent	0031
2 Expenses,Staff	0041
3 Expenses,Office	0046
4 Expenses,IT	0056
5 Expenses,Equipment	0061

Tag Result: always return a result

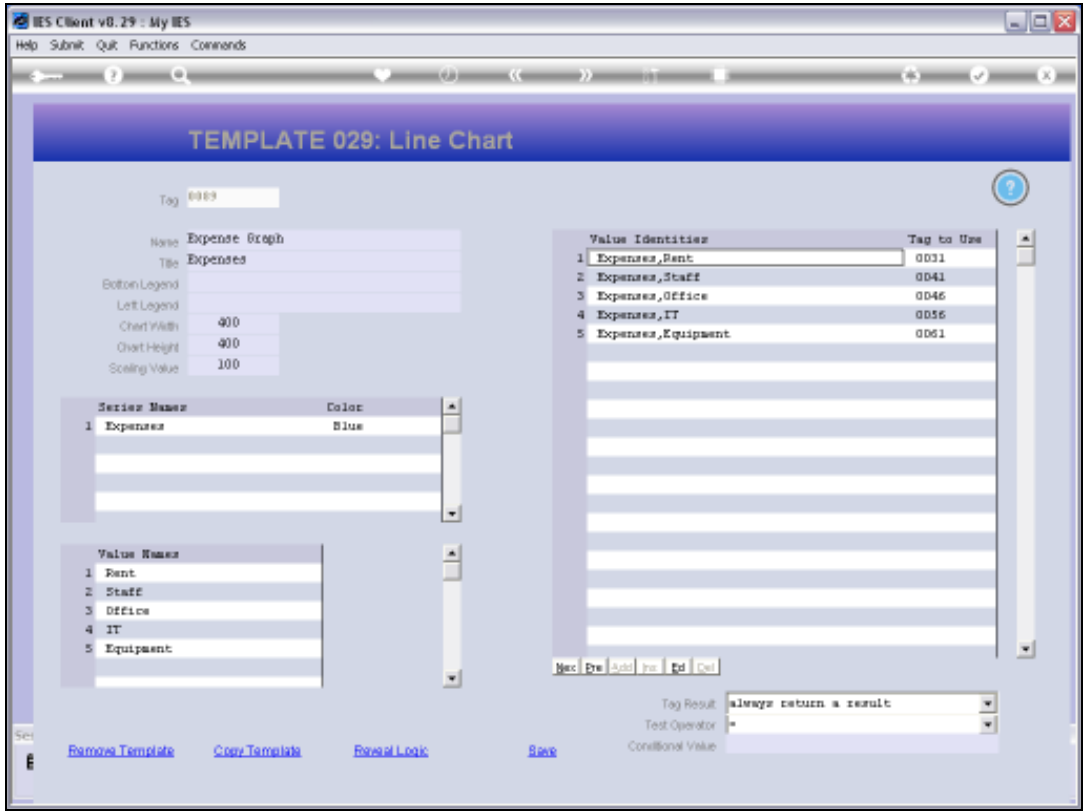
Test Operator: *

Conditional Value:

[Remove Template](#) [Copy Template](#) [Reveal Logic](#) [Save](#)

Slide 21

Slide notes: For each Series, the system will create an Identity for each Value Name, and then we need to state where the Value for the Identity will come from, i.e. which Tag.



Slide 22
Slide notes:

IES Client v8.29 : My IES

Help Lookup Back Field Restart Line Edit Mini Menu Submit Field Quit

TEMPLATE 029: Line Chart

Tag: 0009

Name: Expense Graph

Title: Expenses

Bottom Legend:

Left Legend:

Chart Width: 400

Chart Height: 400

Scaling Value: 100

Series Names:

Series Names	Color
1 Expenses	Blue
2	
3	
4	
5	

Value Names:

1 Rent
2 Staff
3 Office
4 IT
5 Equipment

Value Identifiers:

Value Identifiers	Tag to Use
1 Expenses,Rent	0031
2 Expenses,Staff	0041
3 Expenses,Office	0046
4 Expenses,IT	0056
5 Expenses,Equipment	0061

Tag Result: always return a result

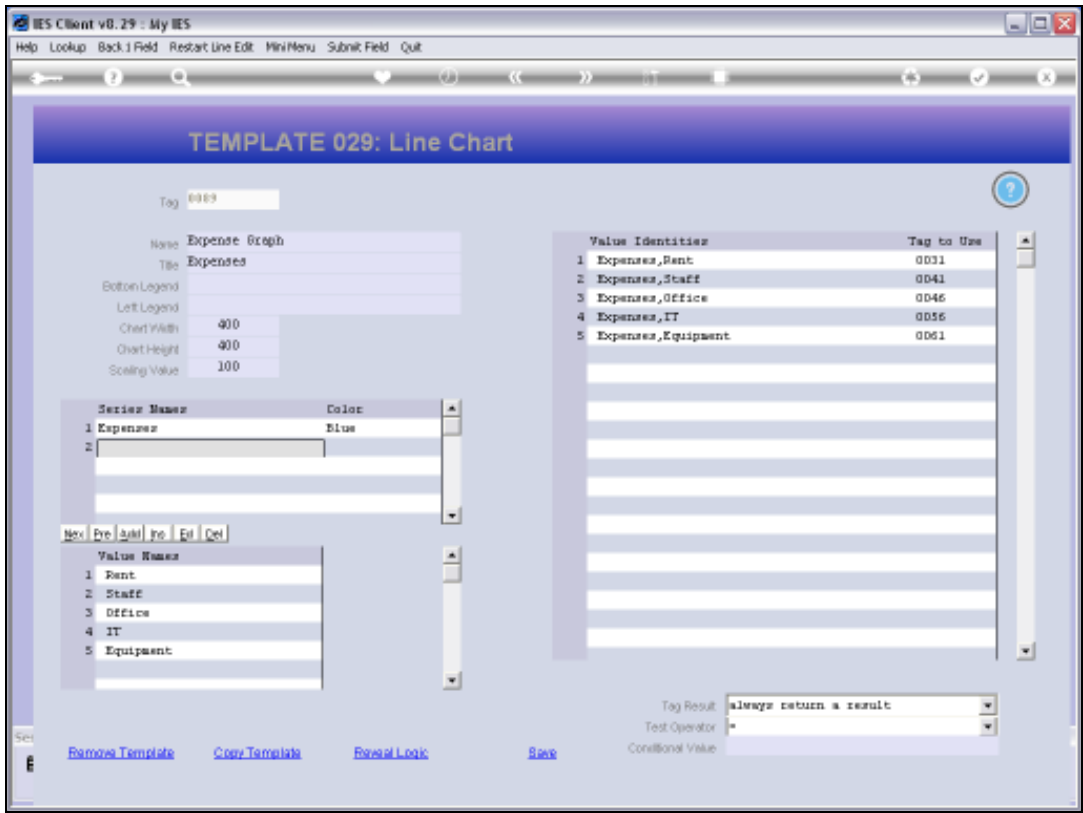
Test Operator: *

Conditional Value:

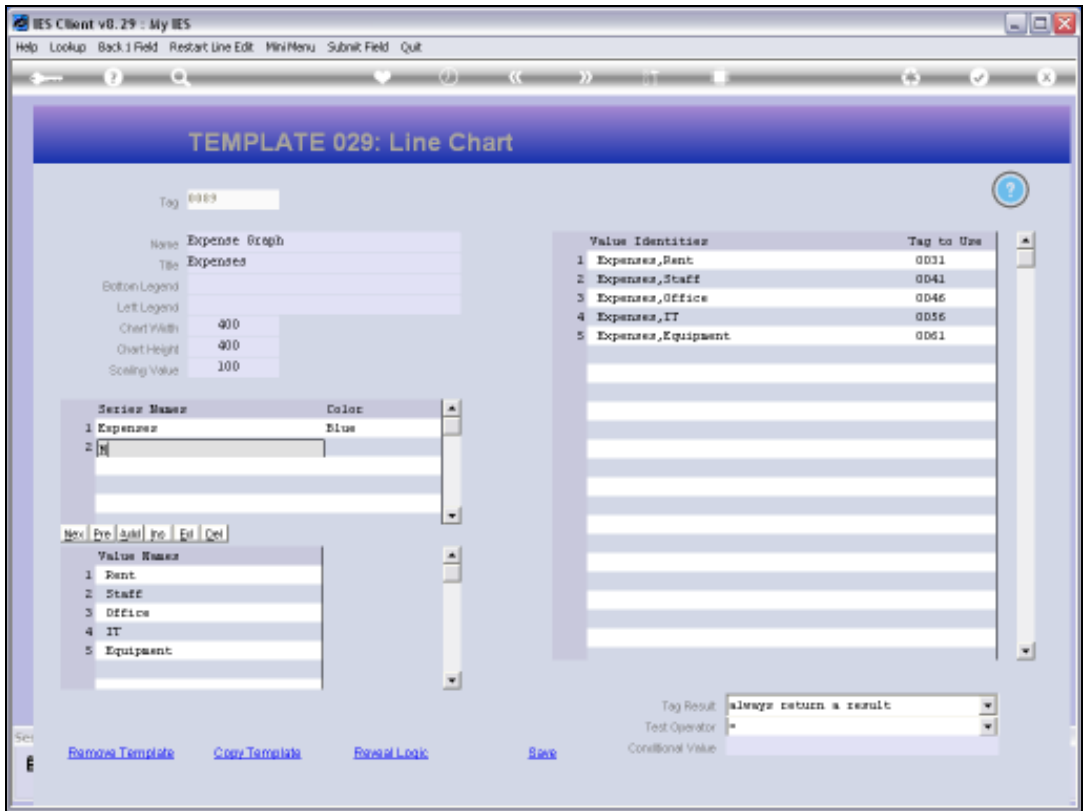
Remove Template Copy Template Reveal Logic Save

Slide 23

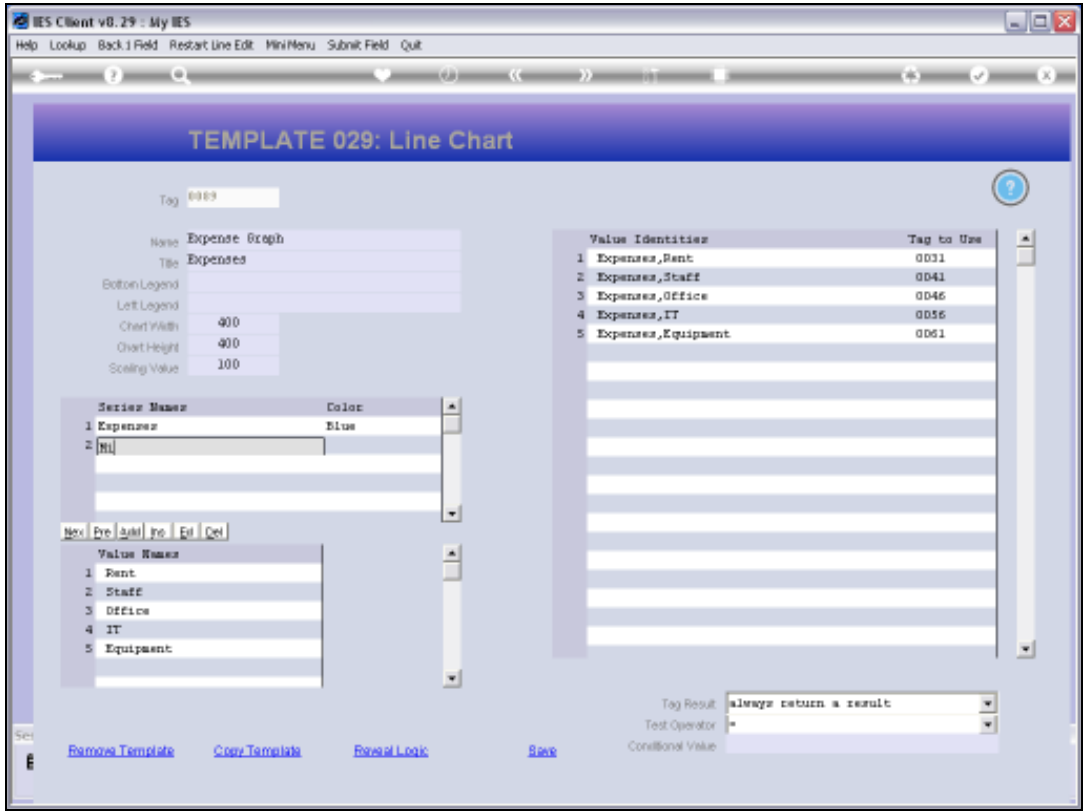
Slide notes:



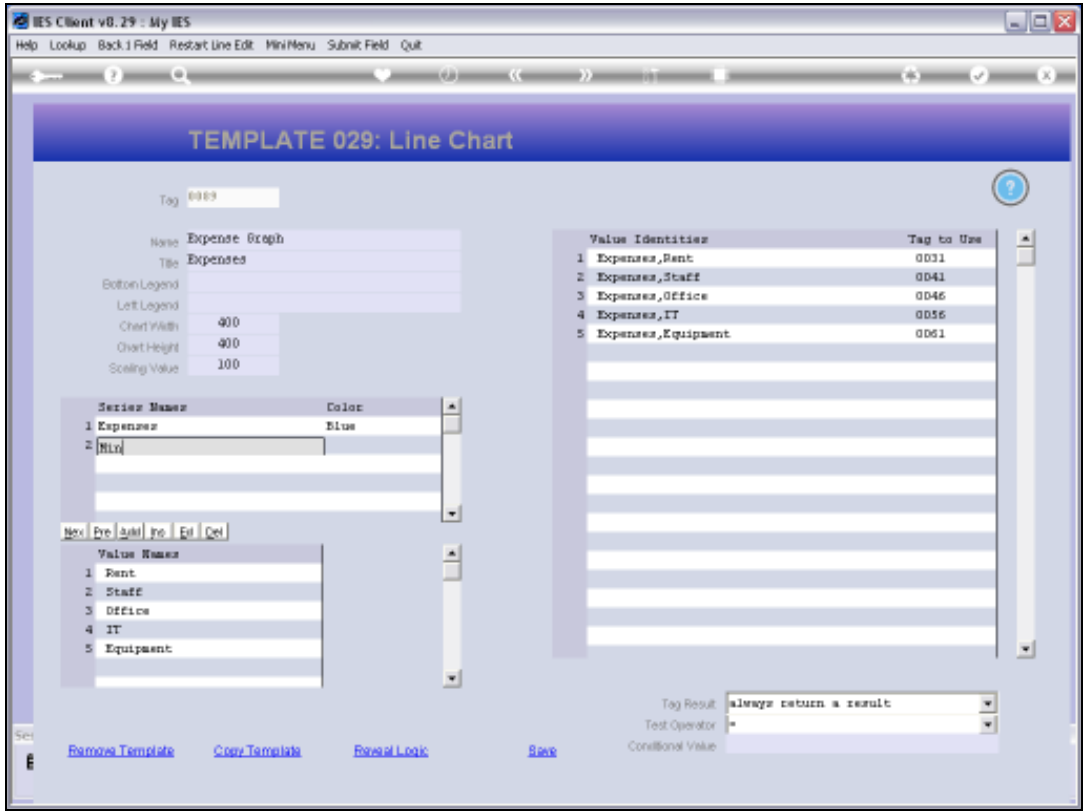
Slide 24
Slide notes:



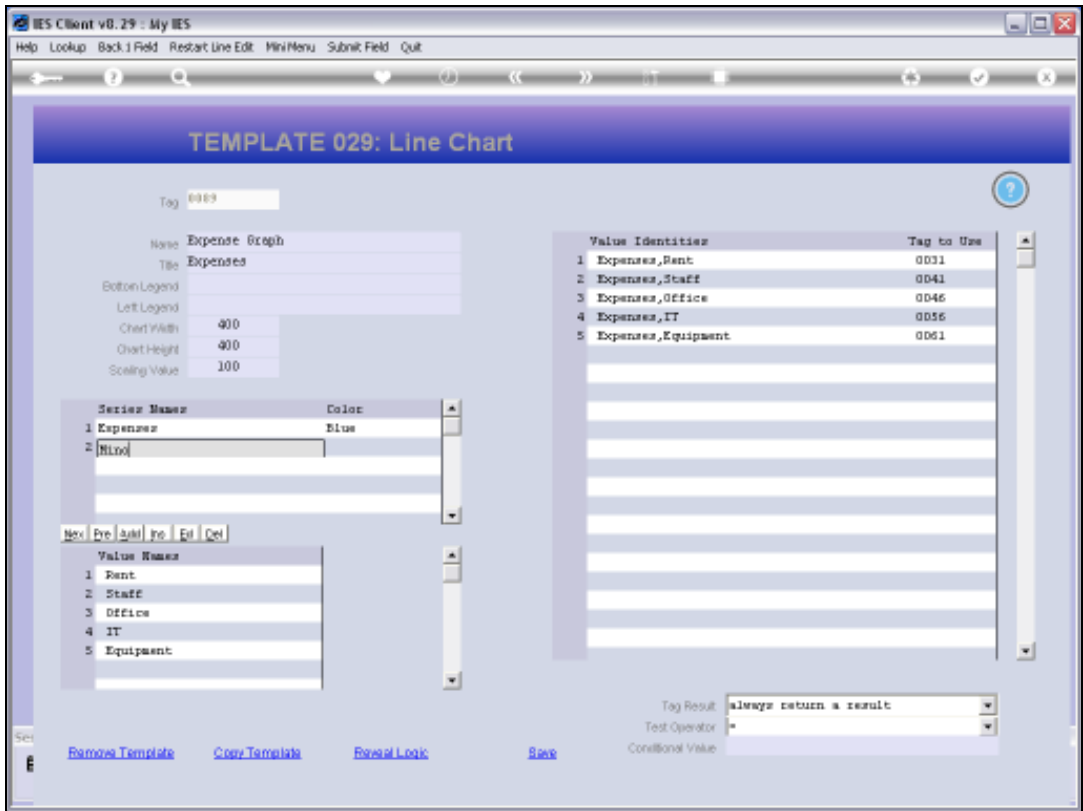
Slide 25
Slide notes:



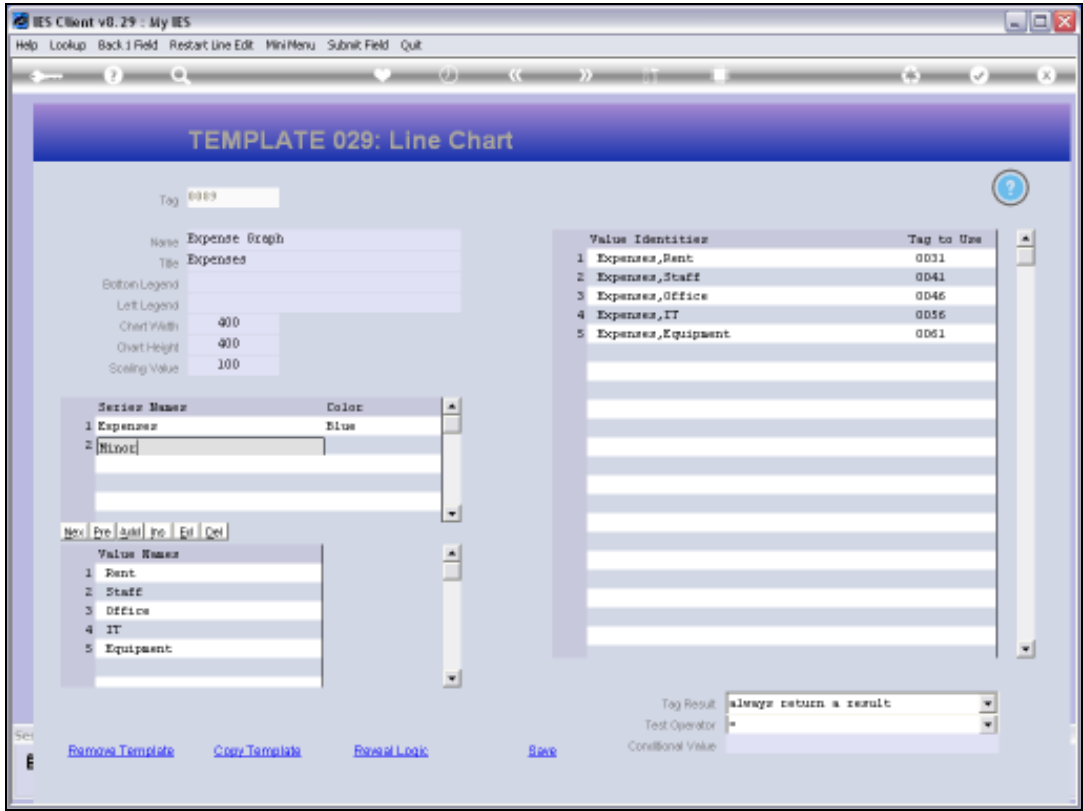
Slide 26
Slide notes:



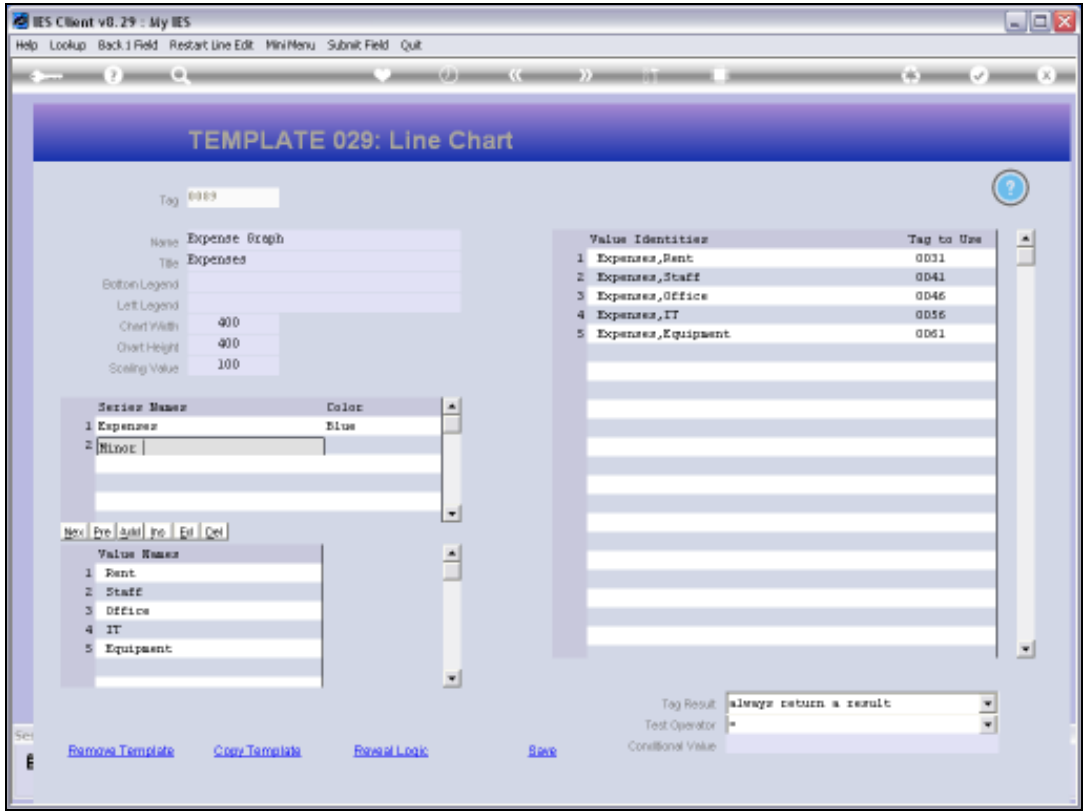
Slide 27
Slide notes:



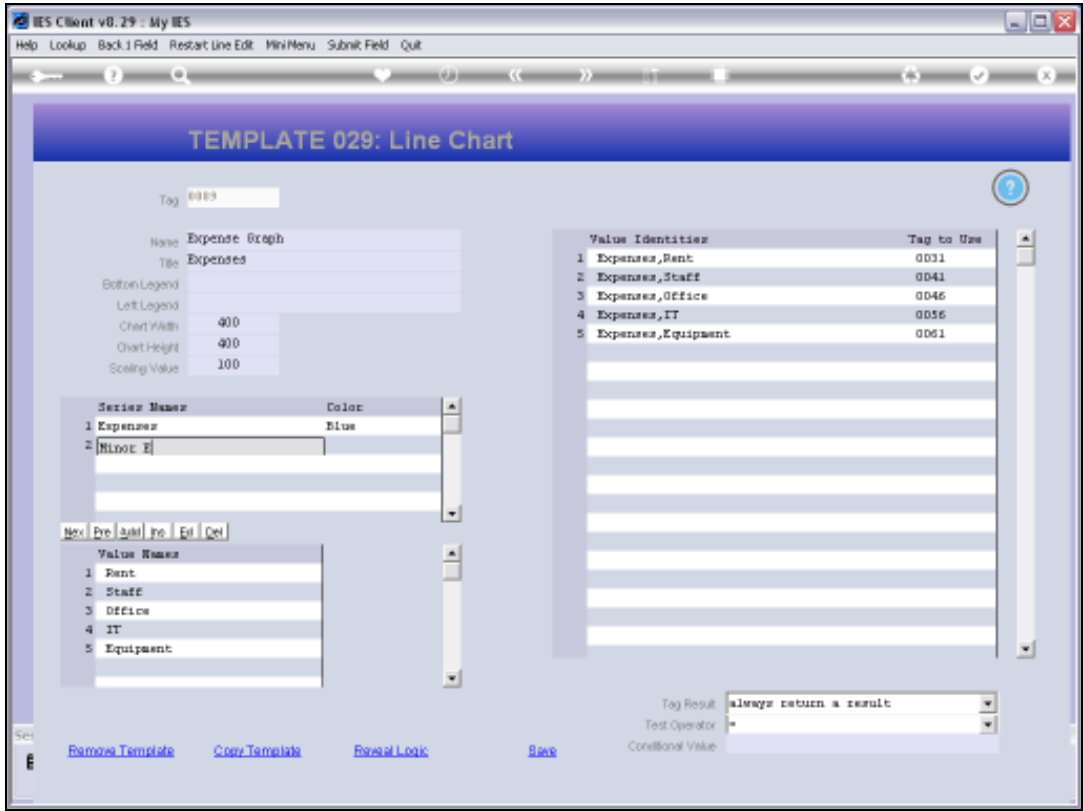
Slide 28
Slide notes:



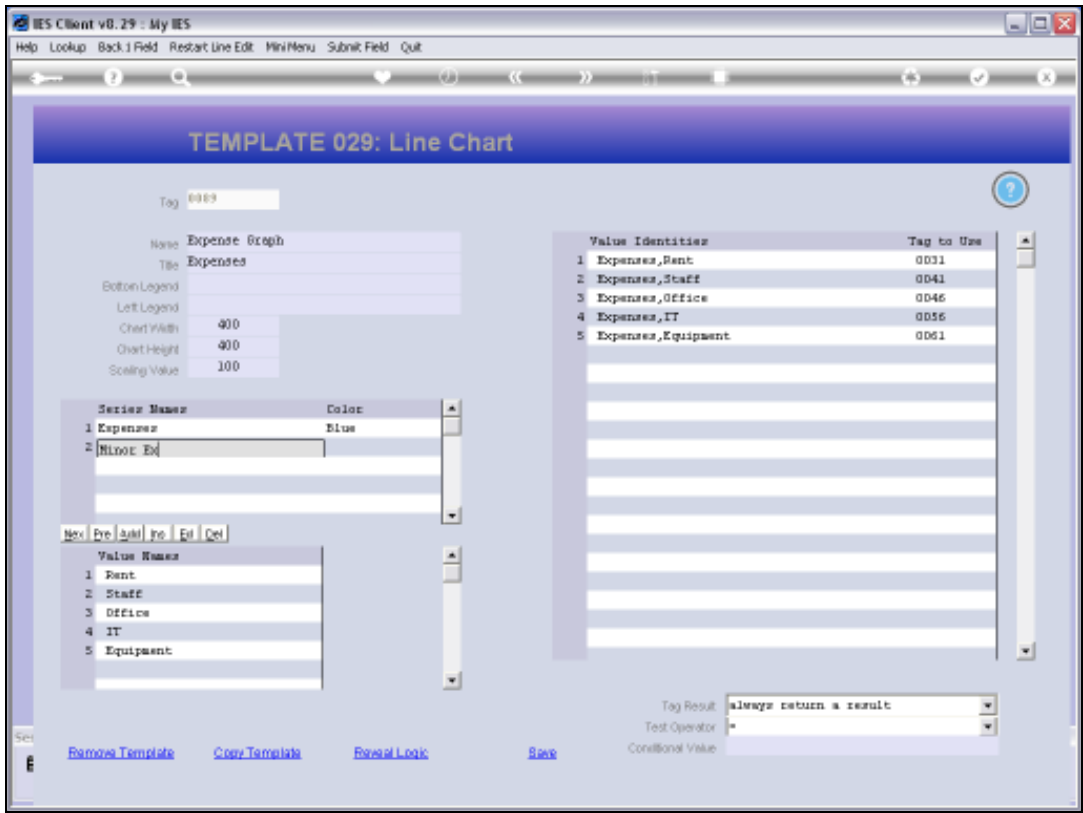
Slide 29
Slide notes:



Slide 30
Slide notes:

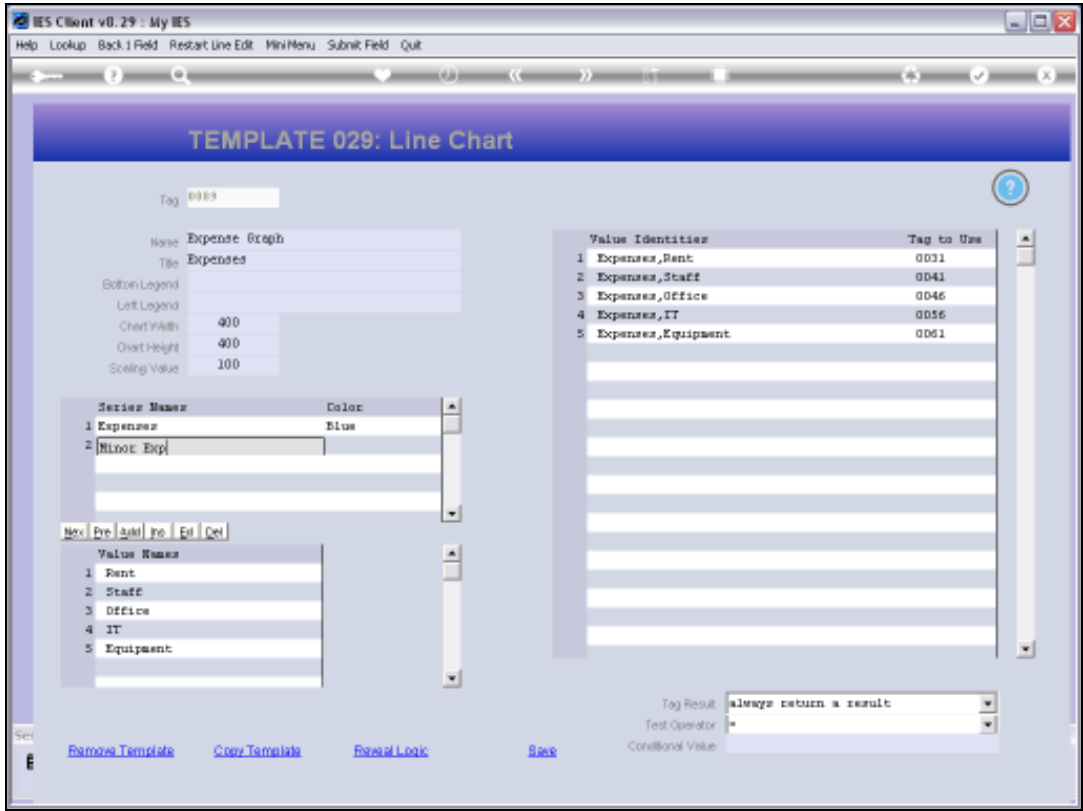


Slide 31
Slide notes:

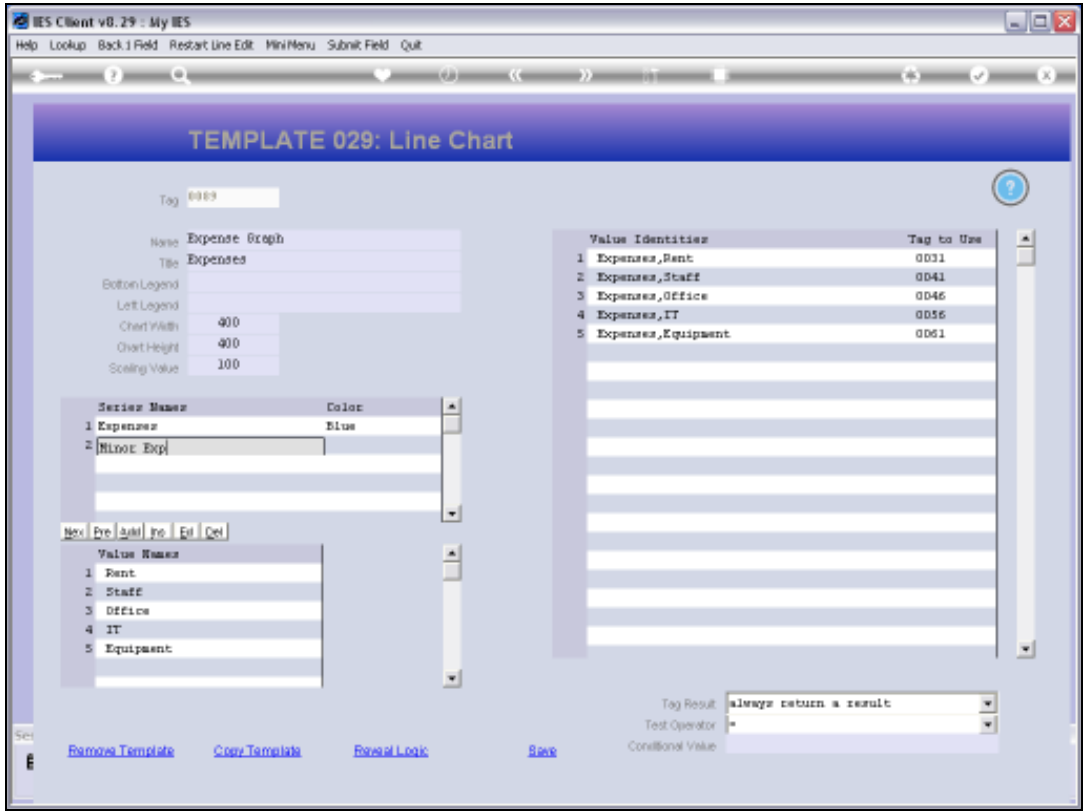


Slide 32

Slide notes:



Slide 33
Slide notes:



Slide 34

Slide notes:

IES Client v8.29 : My IES

Help Lookup Back Field Restart Line Edit Mini Menu Submit Field Quit

TEMPLATE 029: Line Chart

Tag: 0009

Name: Expense Graph
Title: Expenses
Bottom Legend:
Left Legend:
Chart Width: 400
Chart Height: 400
Scaling Value: 100

Series Name	Color
1 Expenses	Blue
2 Nilnot Expen	

Next Prev Add Del Edit Del

Value Name
1 Rent
2 Staff
3 Office
4 IT
5 Equipment

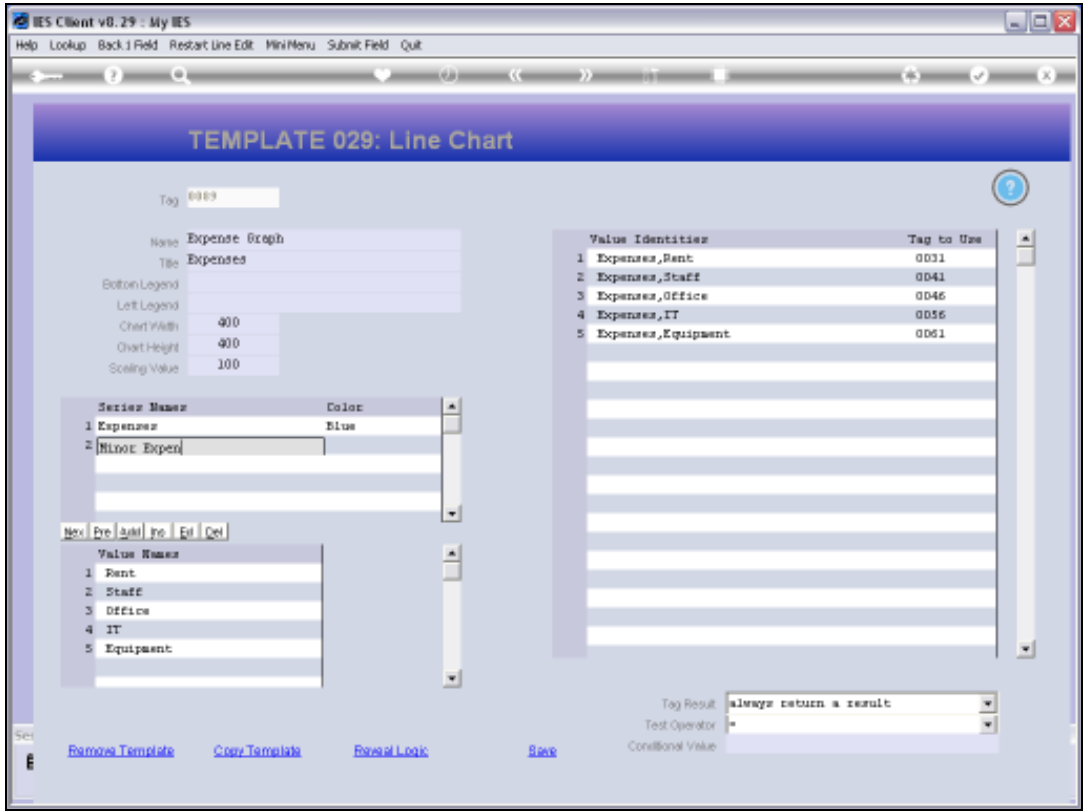
Value Identifiers	Tag to Use
1 Expenses,Rent	0031
2 Expenses,Staff	0041
3 Expenses,Office	0046
4 Expenses,IT	0056
5 Expenses,Equipment	0061

Tag Result: always return a result
Test Operator:
Conditional Value:

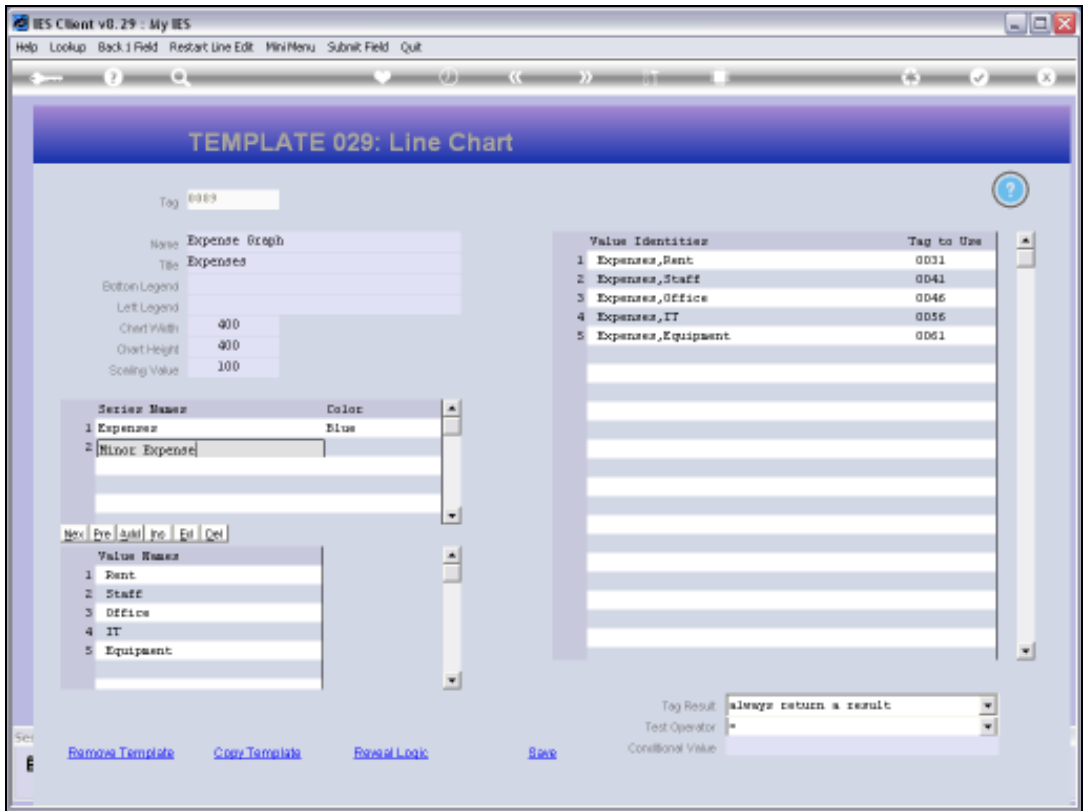
[Remove Template](#) [Copy Template](#) [Reveal Logic](#) [Save](#)

Slide 35

Slide notes:



Slide 36
Slide notes:



Slide 37
Slide notes:

IES Client v8.29 : My IES

Help Lookup Back Field Restart Line Edit Mini Menu Submit Field Quit

TEMPLATE 029: Line Chart

Tag: 0009

Name: Expense Graph
Title: Expensed
Bottom Legend:
Left Legend:
Chart Width: 400
Chart Height: 400
Scaling Value: 100

Series Name	Color
1 Expenses	Blue
2 Nilnot Expensed	

Next Prev Add Info Edit Del

Value Name
1 Rent
2 Staff
3 Office
4 IT
5 Equipment

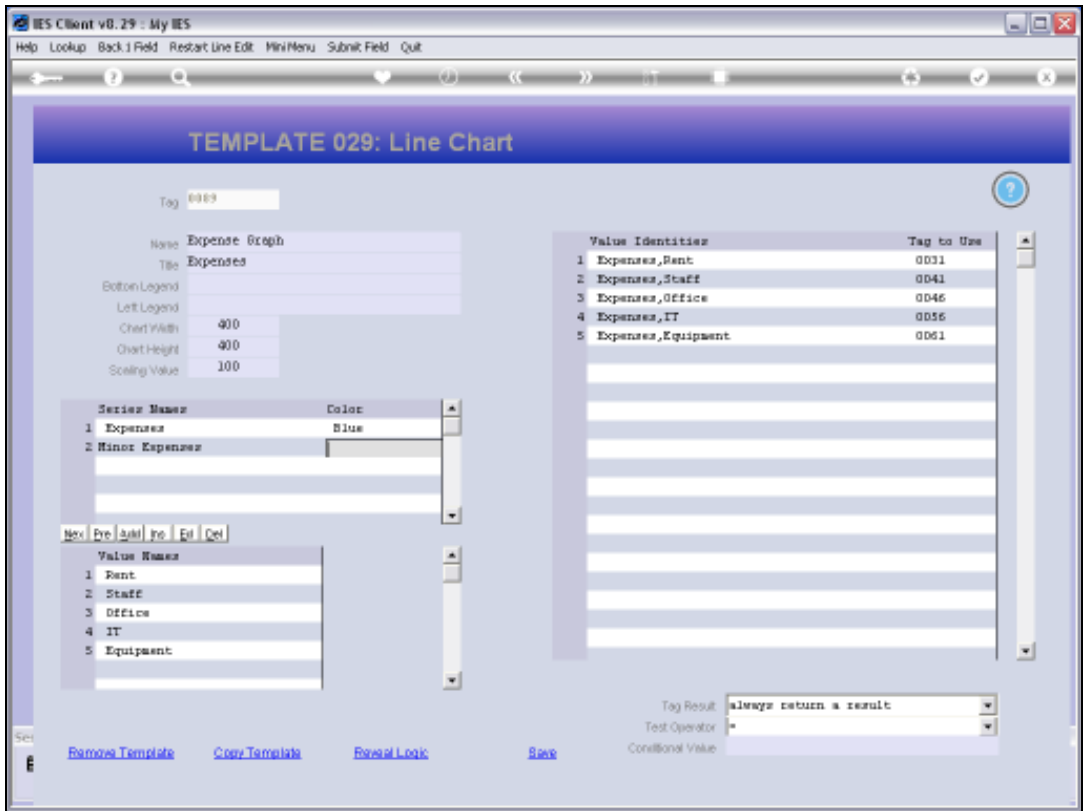
Value Identifiers	Tag to Use
1 Expenses,Rent	0031
2 Expenses,Staff	0041
3 Expenses,Office	0046
4 Expenses,IT	0056
5 Expenses,Equipment	0061

Tag Result: always return a result
Test Operator:
Conditional Value:

[Remove Template](#) [Copy Template](#) [Reveal Logic](#) [Save](#)

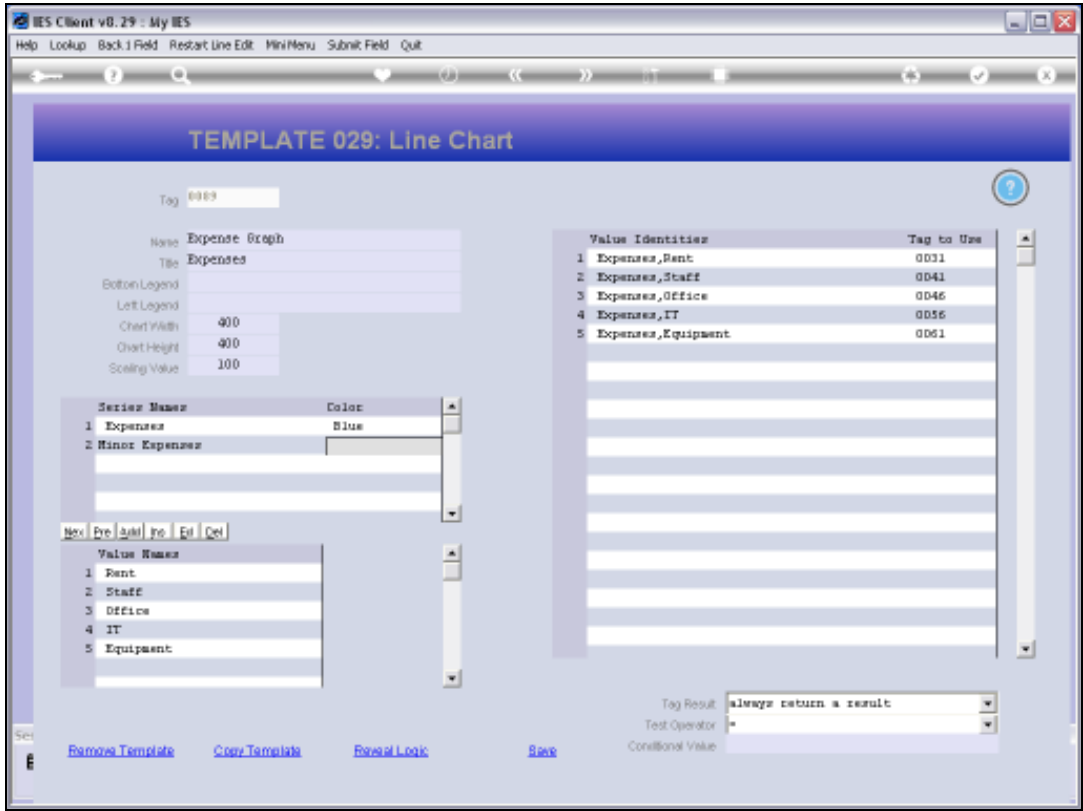
Slide 38

Slide notes:

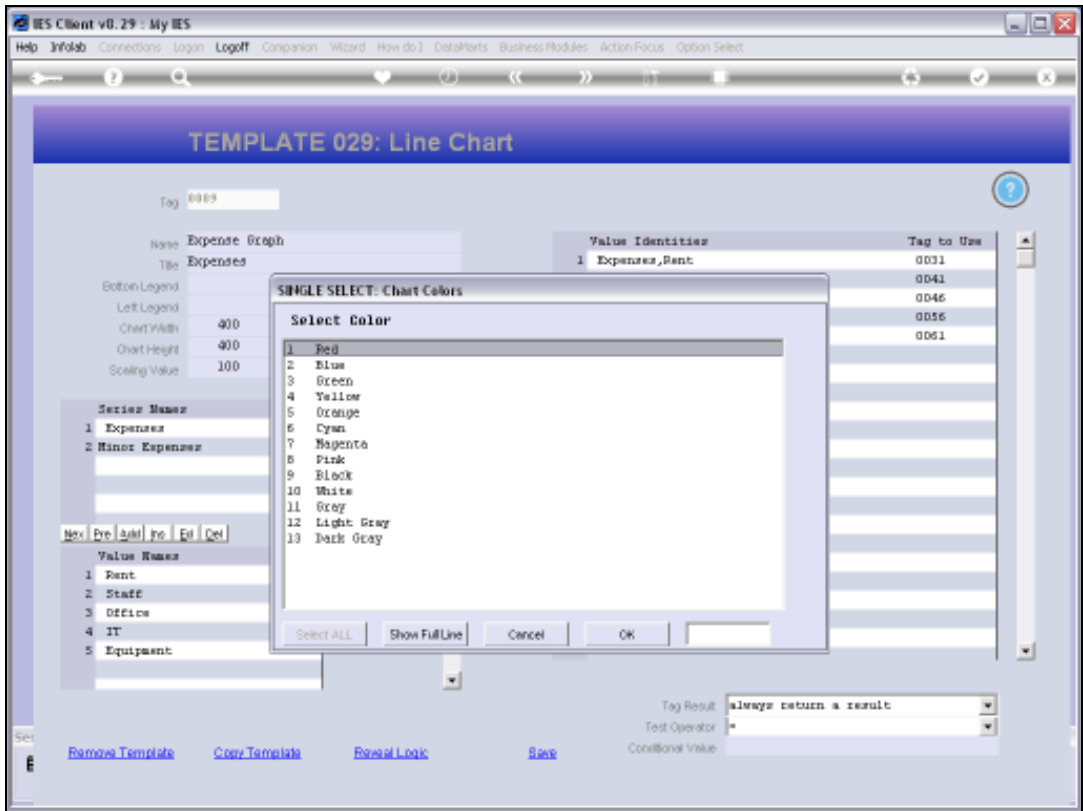


Slide 39

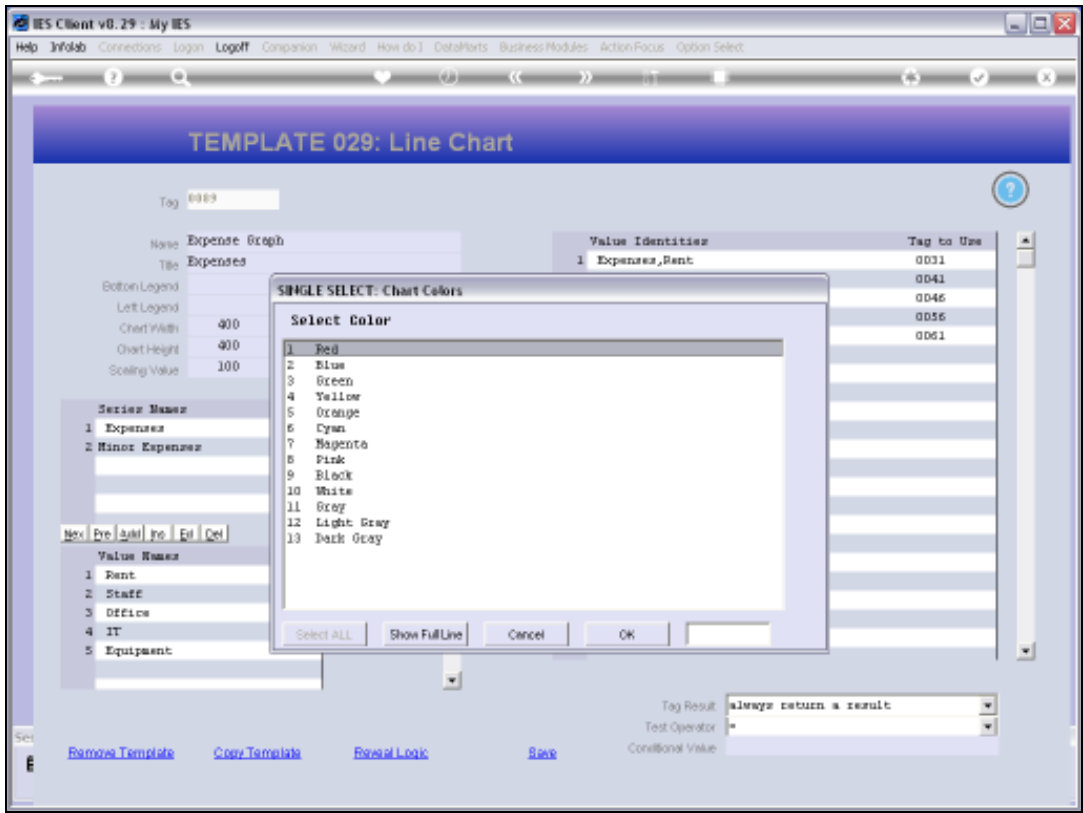
Slide notes:



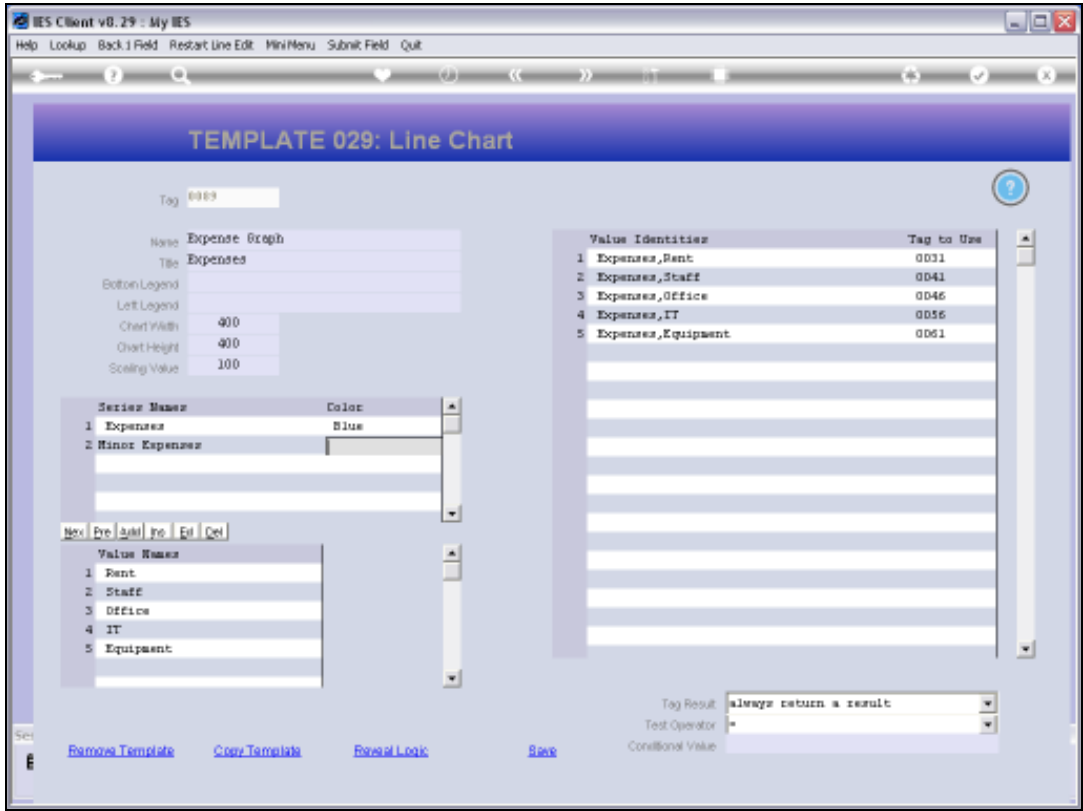
Slide 40
Slide notes:



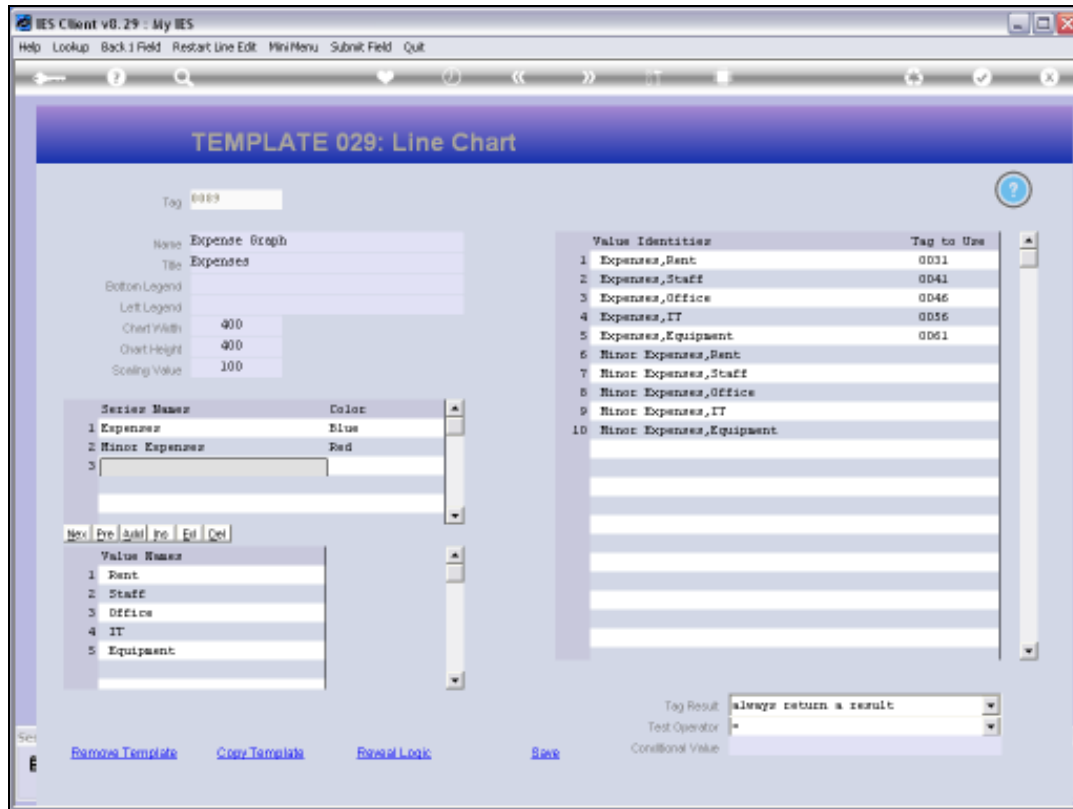
Slide 41
Slide notes:



Slide 42
Slide notes:

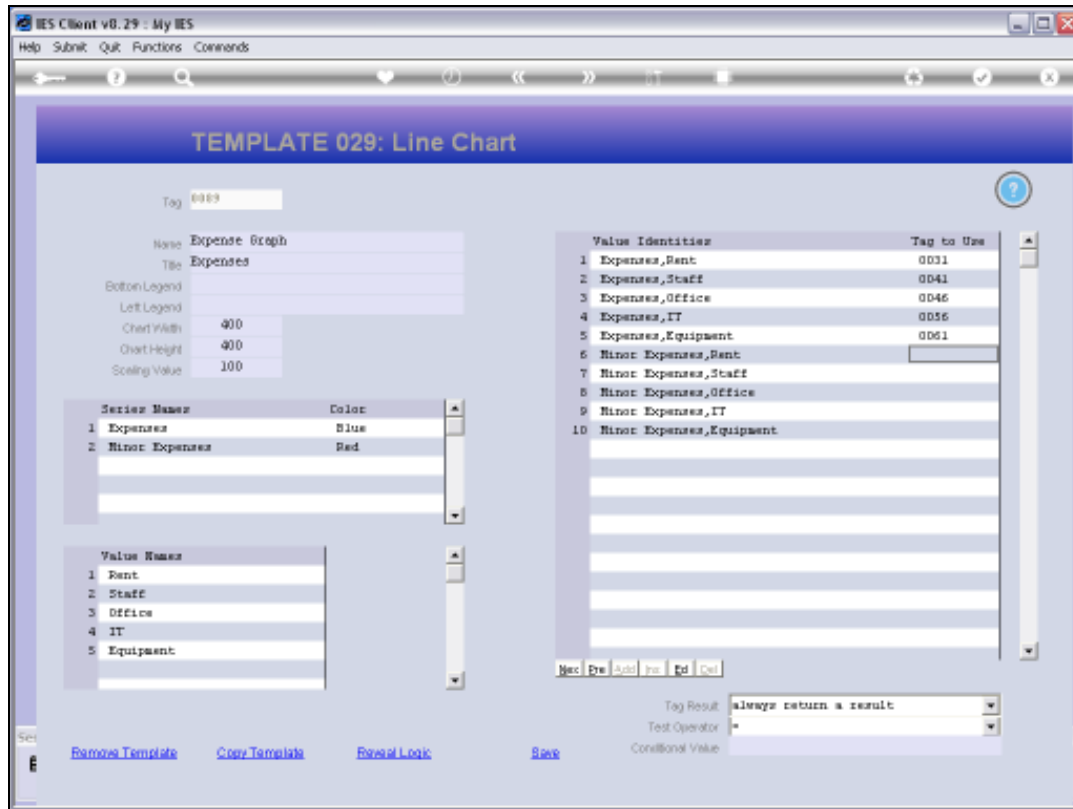


Slide 43
Slide notes:



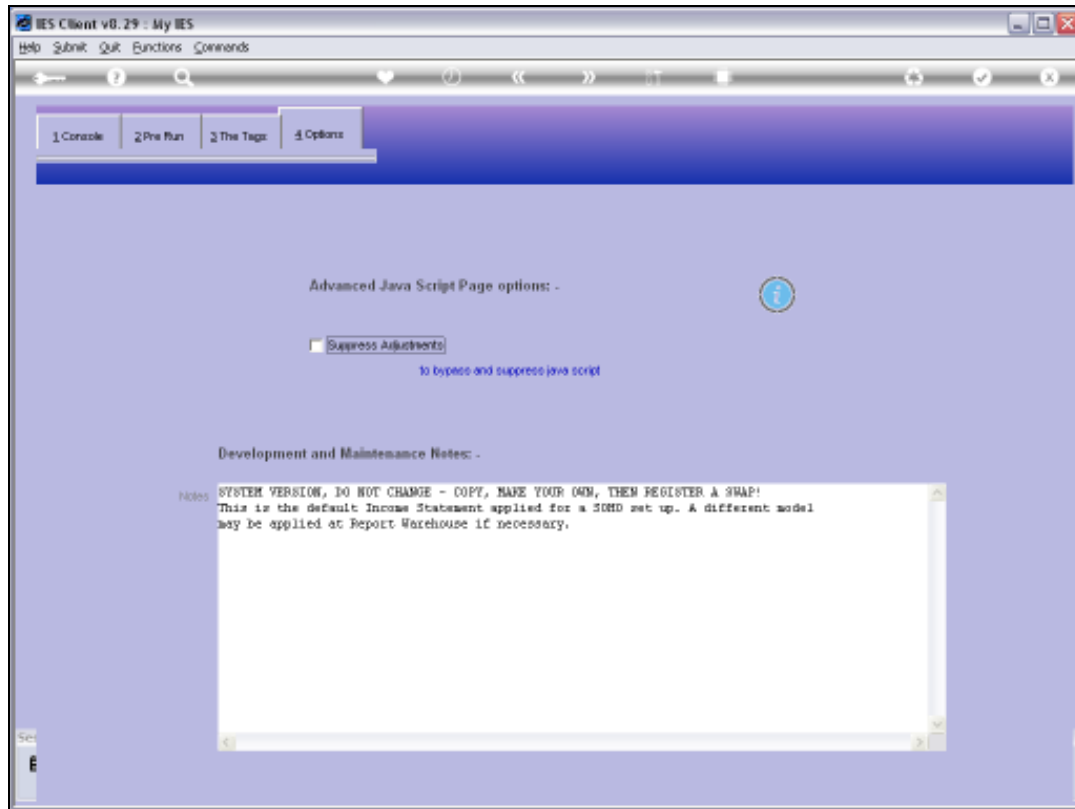
Slide 44

Slide notes: The moment we create a new Series or a new Value Name, there will automatically appear new Identities on the right.



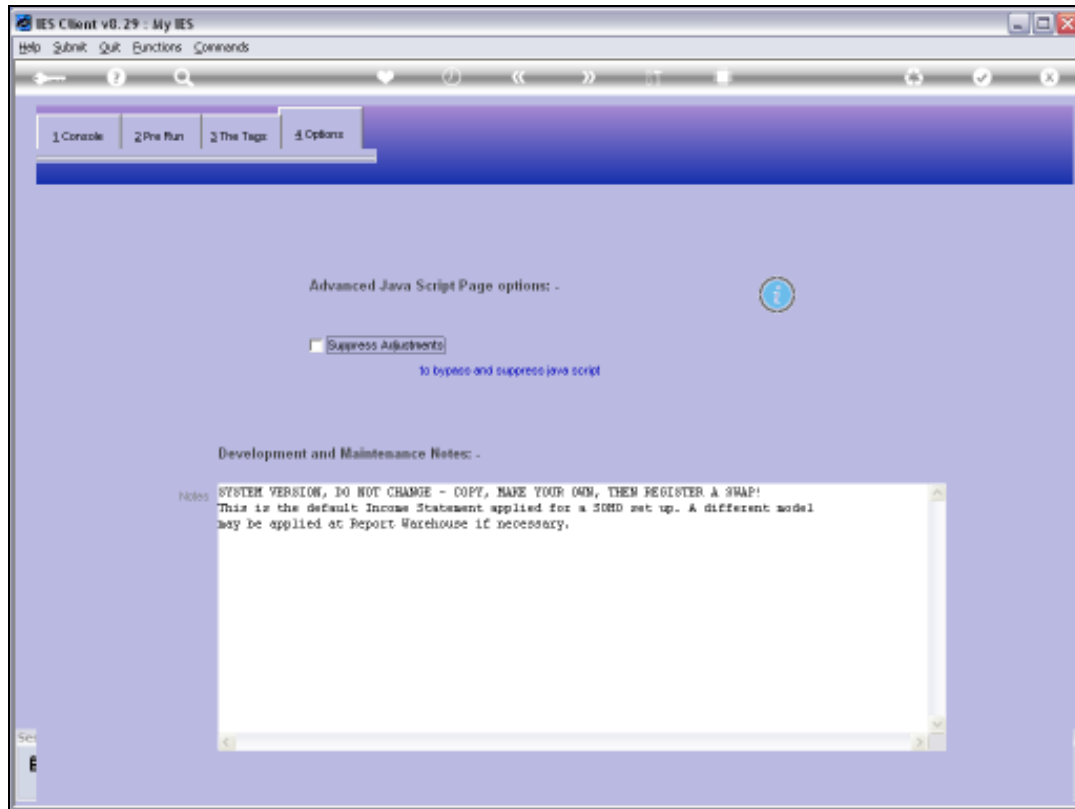
Slide 45

Slide notes: And that's how easy it is to do a Line Graph.



Slide 46

Slide notes: As a reminder, we note that when we use Charts in a Report, then the Java Script must NOT be suppressed.



Slide 47

Slide notes: