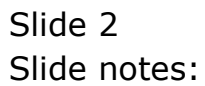


## Slide 1

Slide notes: This is an example of an Invoice. On this Invoice, we use a UNIT to display the Line Items on the Invoice, and in the Unit, we use the 'Line Iteration Count' Template to display the number for each Line Item.





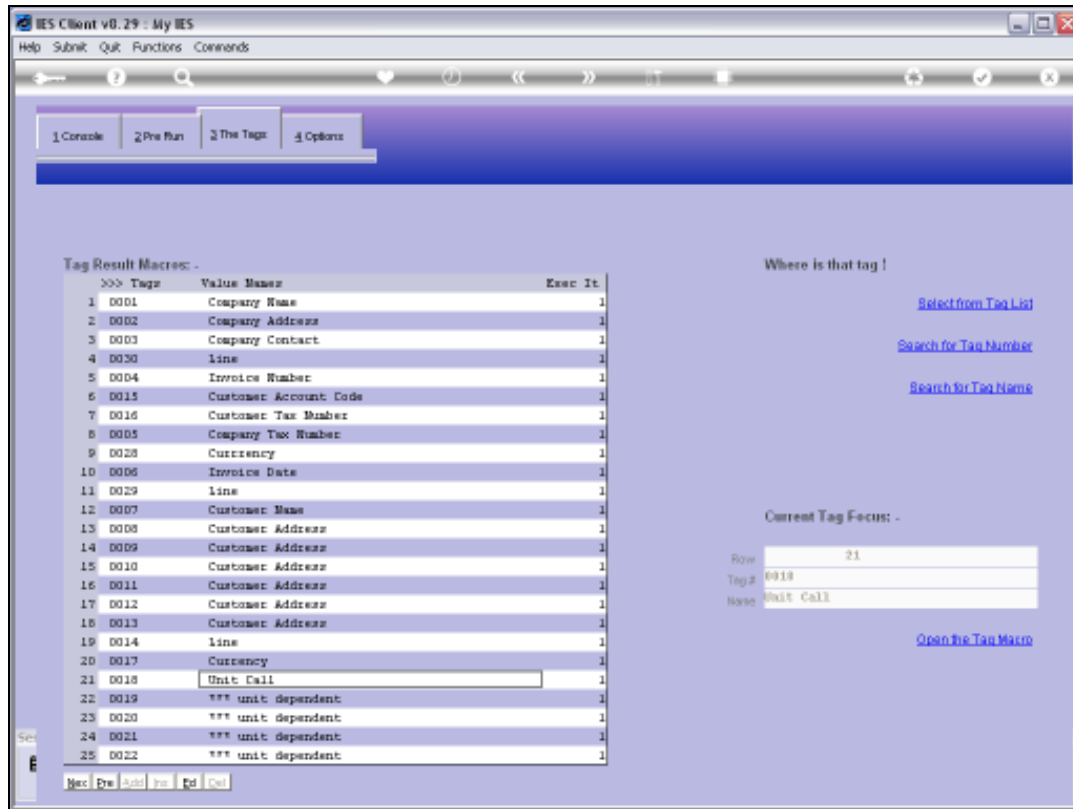
Slide 3

Slide notes: Our example is based on a Retail Invoice Report.



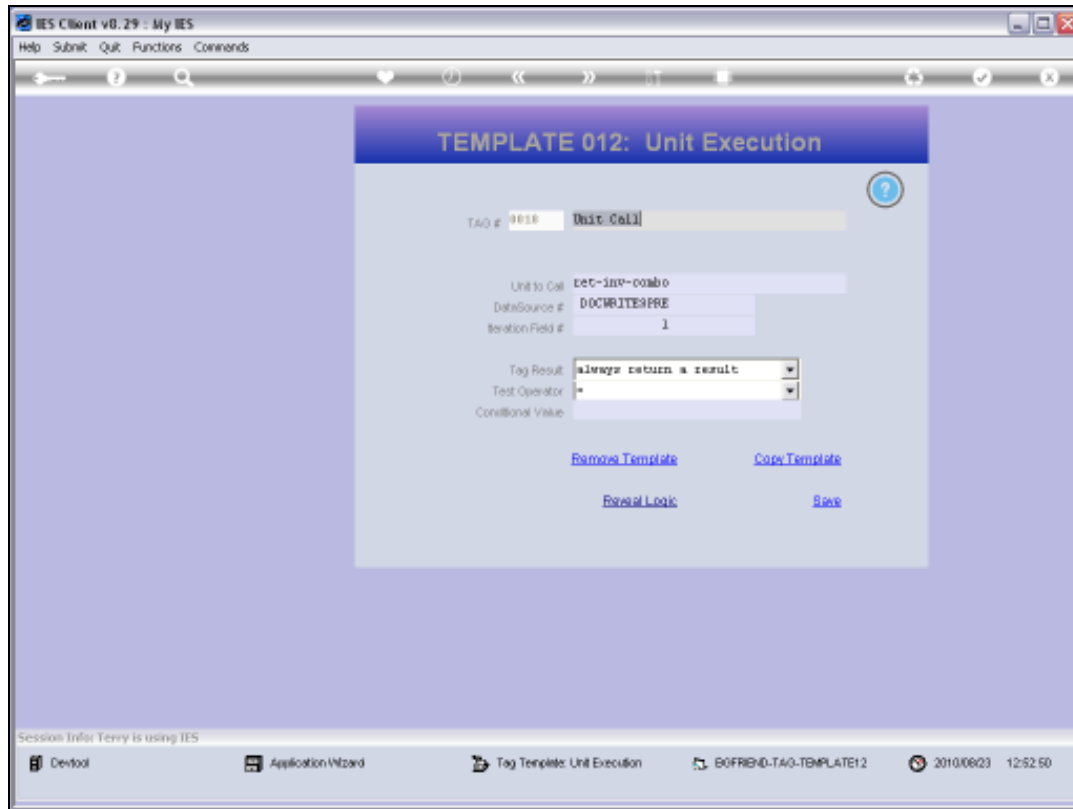
Slide 4

Slide notes:



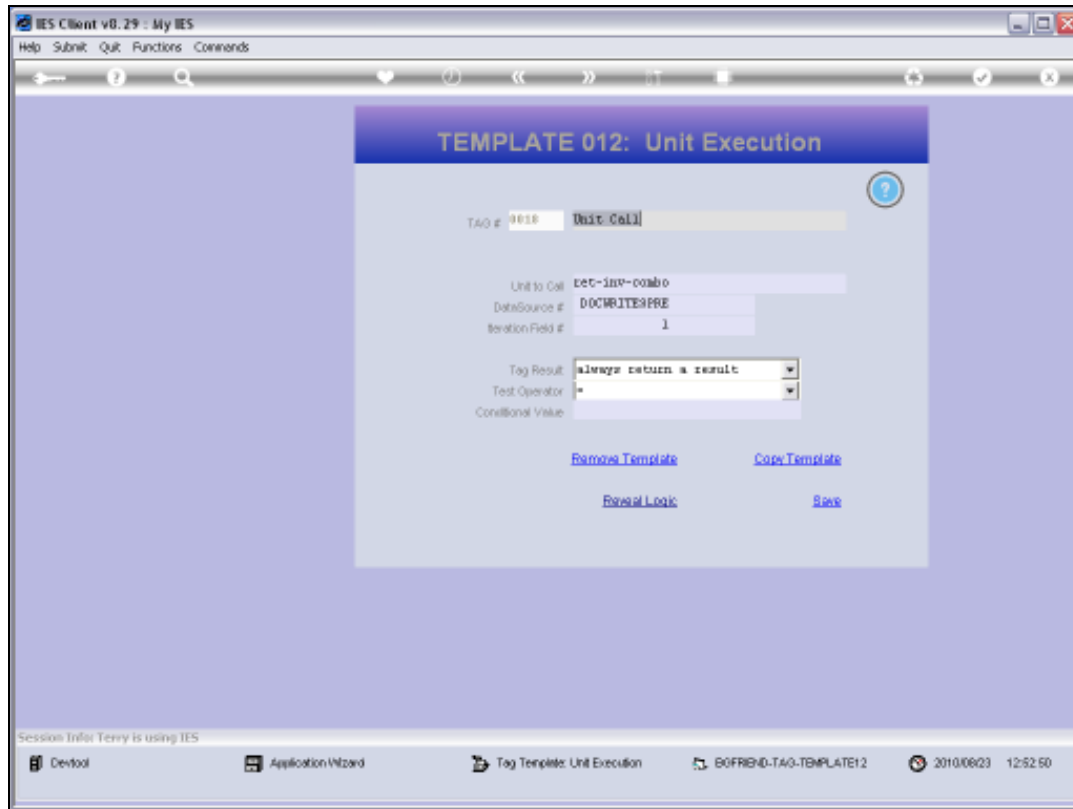
Slide 5

Slide notes: Here we see the Tag in the main Document that calls the Unit.



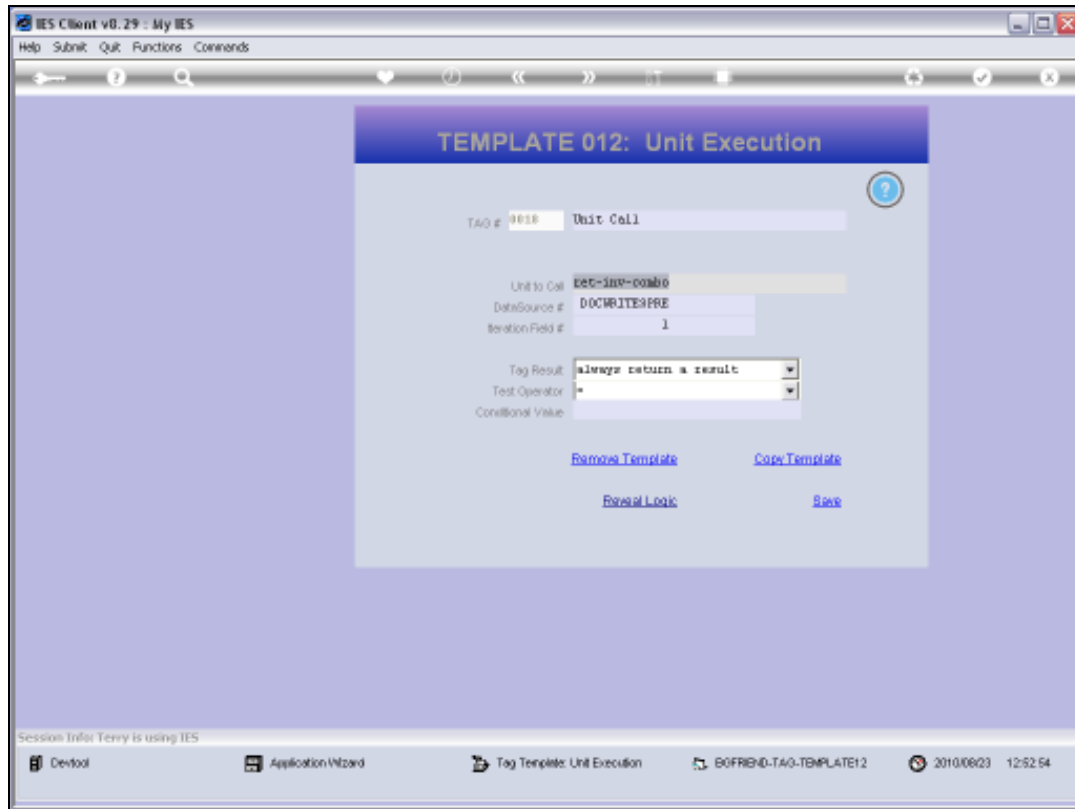
Slide 6

Slide notes:



Slide 7

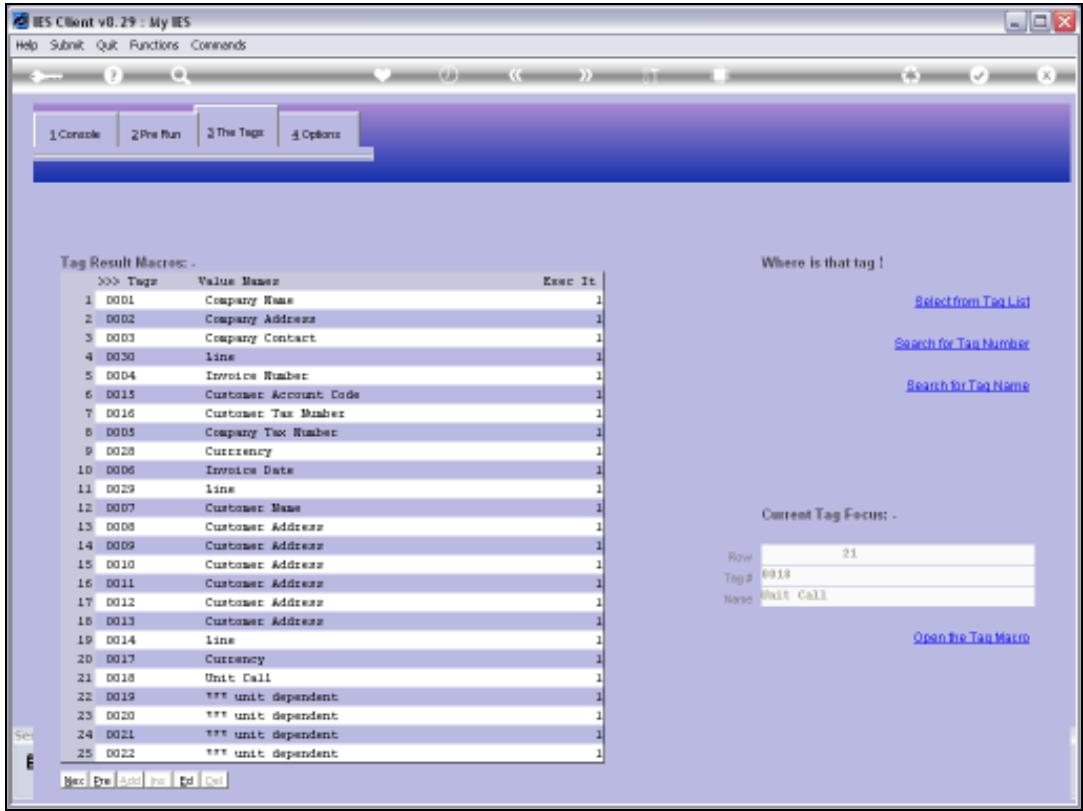
Slide notes:



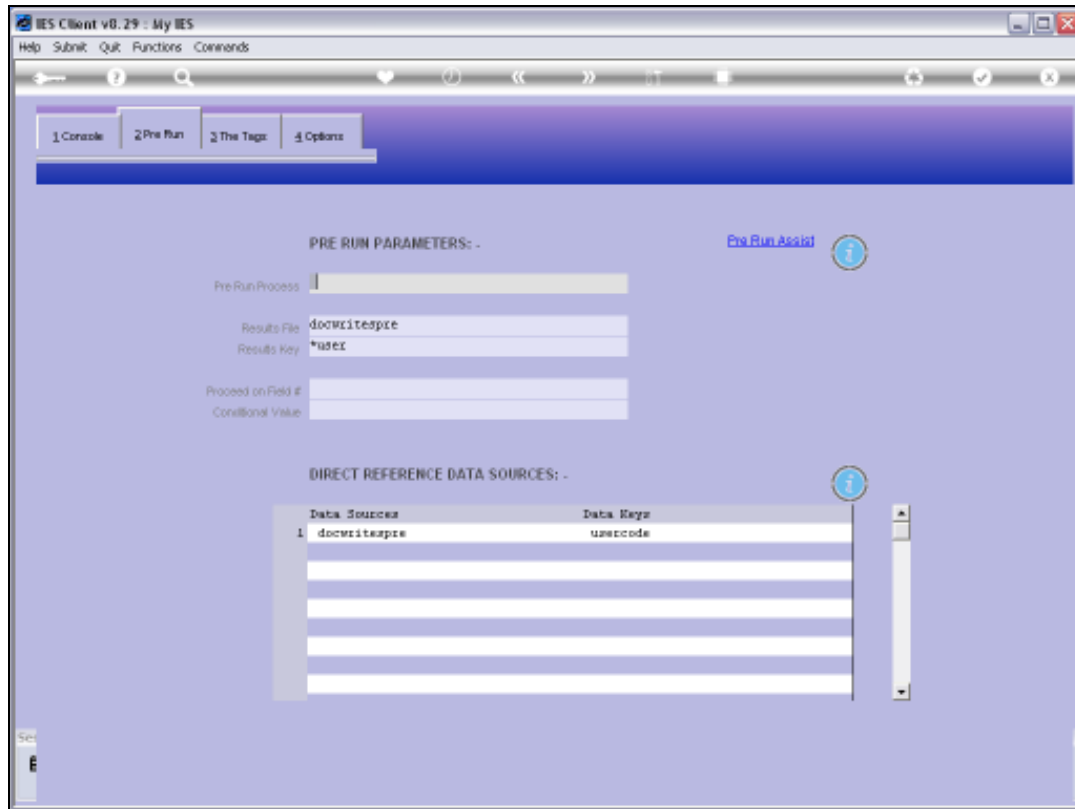
## Slide 8

Slide notes: We note also that this type of Unit Call is based on a Data Source, and for this type of Unit the Data Source is often 'docwritespre', i.e. with a pre-prepared record specifically for the Report.





Slide 9  
Slide notes:



Slide 10

Slide notes: Here we can see the Data Source listed.

IES Client v8.29 : My IES

Help Submit Quit Functions Commands

1 Console 2 Pre Run 3 The Tags 4 Options

PRE RUN PARAMETERS:-

[Pre Run Assist](#) ⓘ

Pre Run Process

Results File docwritespri

Results Key \*user

Process on Field #

Conditional Value

DIRECT REFERENCE DATA SOURCES:- ⓘ

Data Sources	Data Keys
1 docwritespri	usercode

New Pre Subl Ins Ed Del

Slide 11

Slide notes:



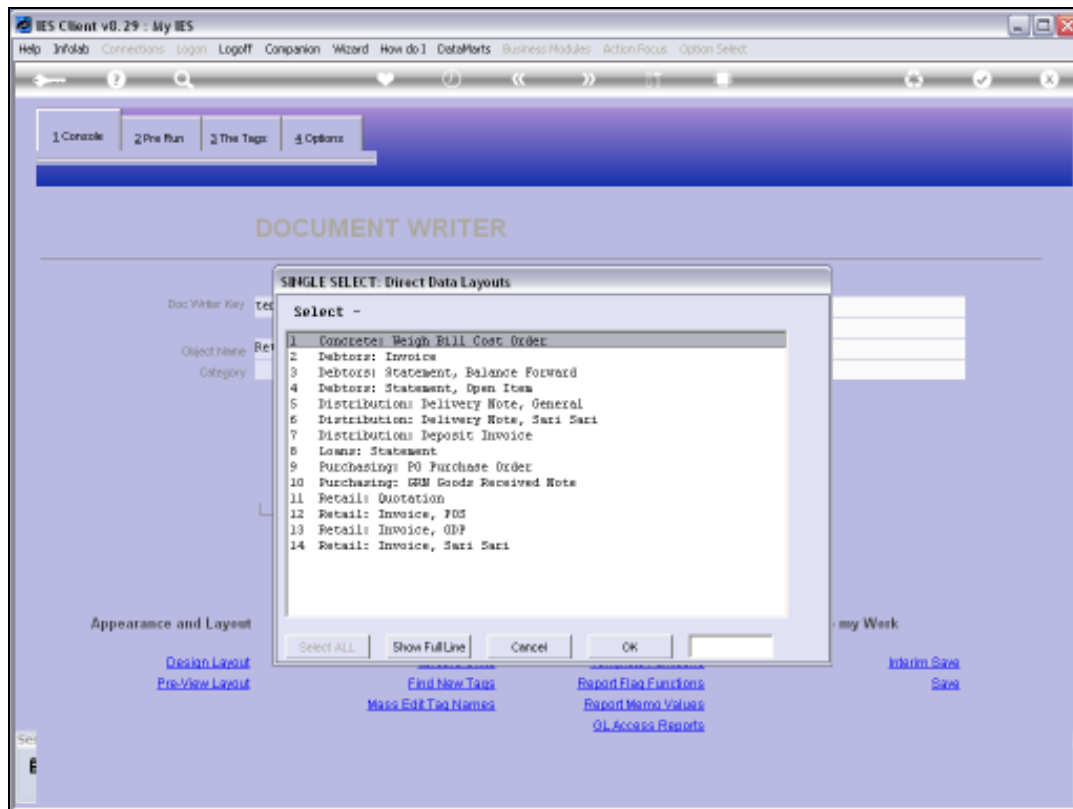
Slide 12

Slide notes:



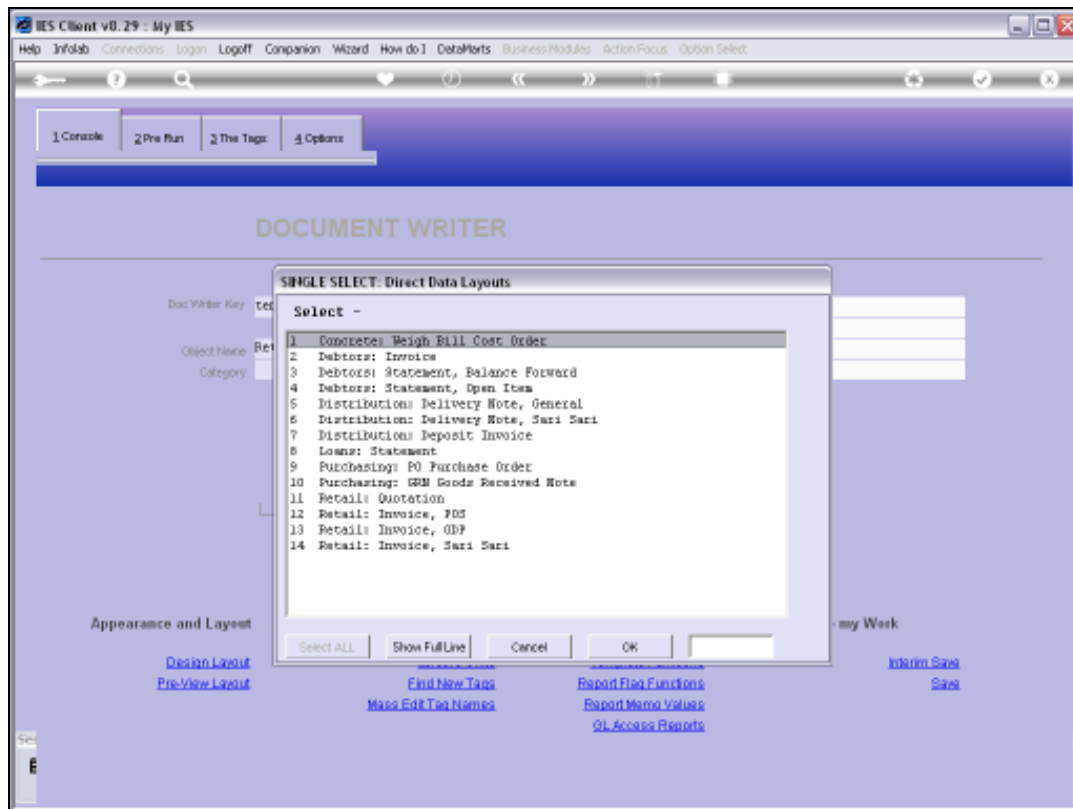
Slide 13

Slide notes:



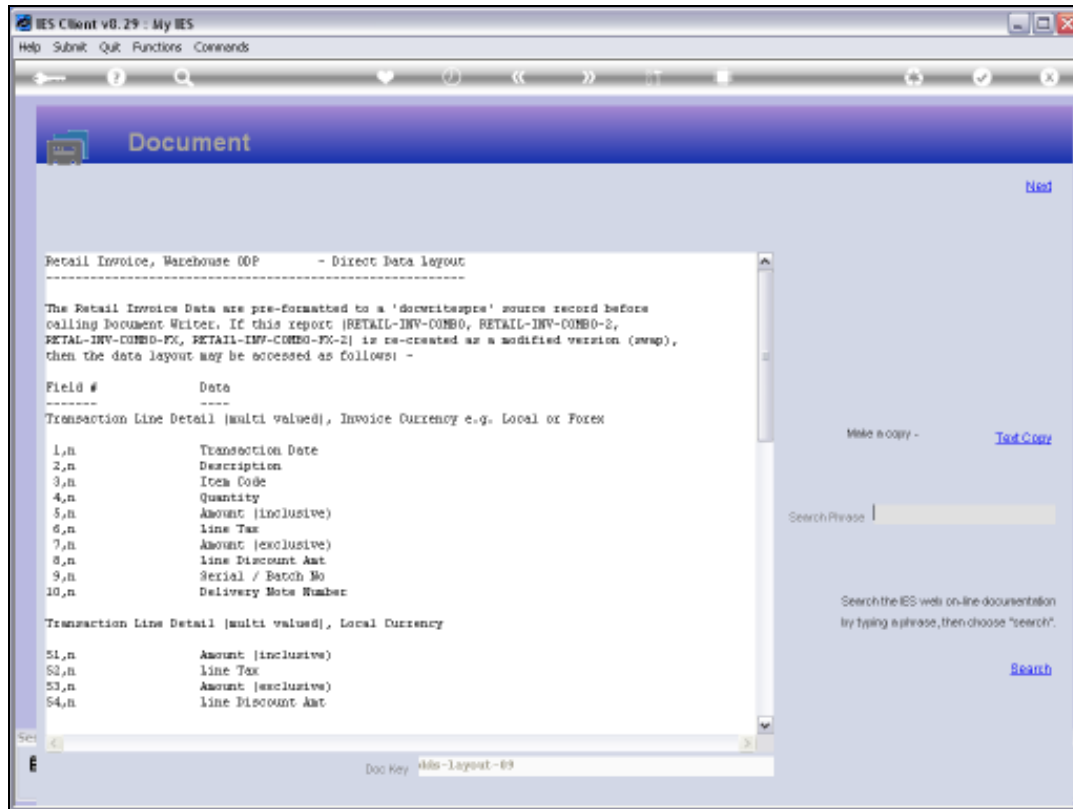
Slide 14

Slide notes:



Slide 15

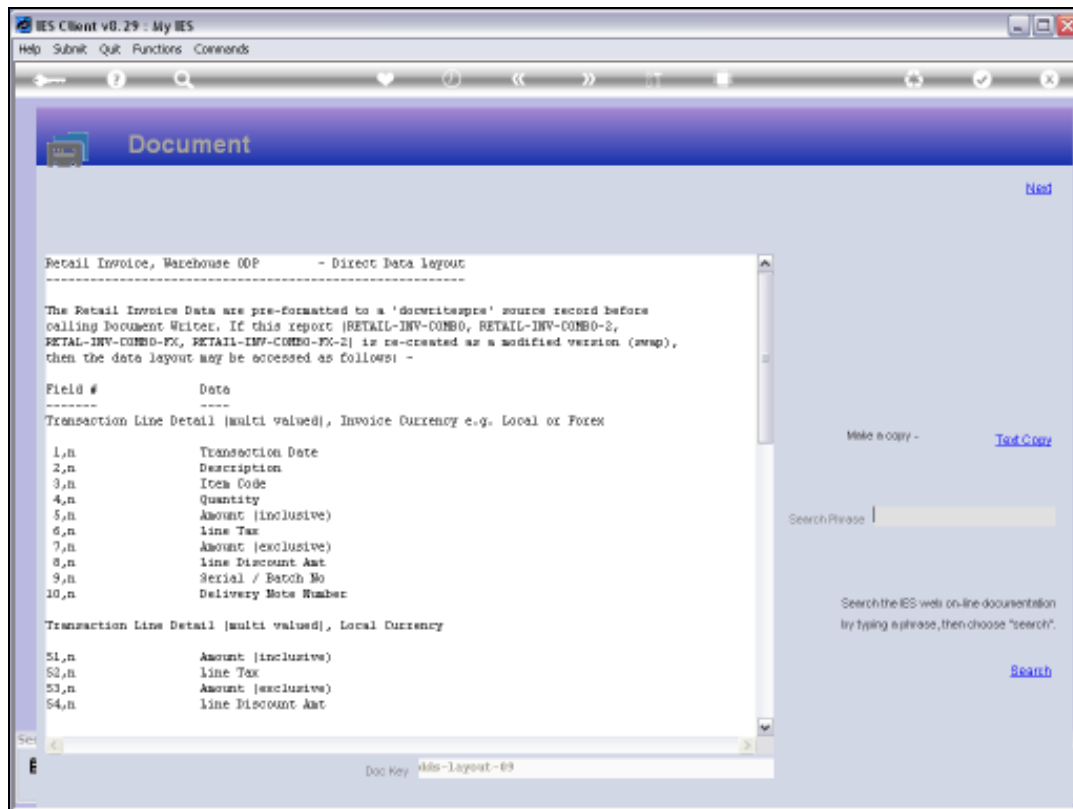
Slide notes: From the Metadata, we can retrieve the Data Source Layout.



## Slide 16

Slide notes: Our Unit, in this case, will display the Transaction lines, and the Line Count in column 1 on the Invoice is based on the number of Transaction Lines that will appear.





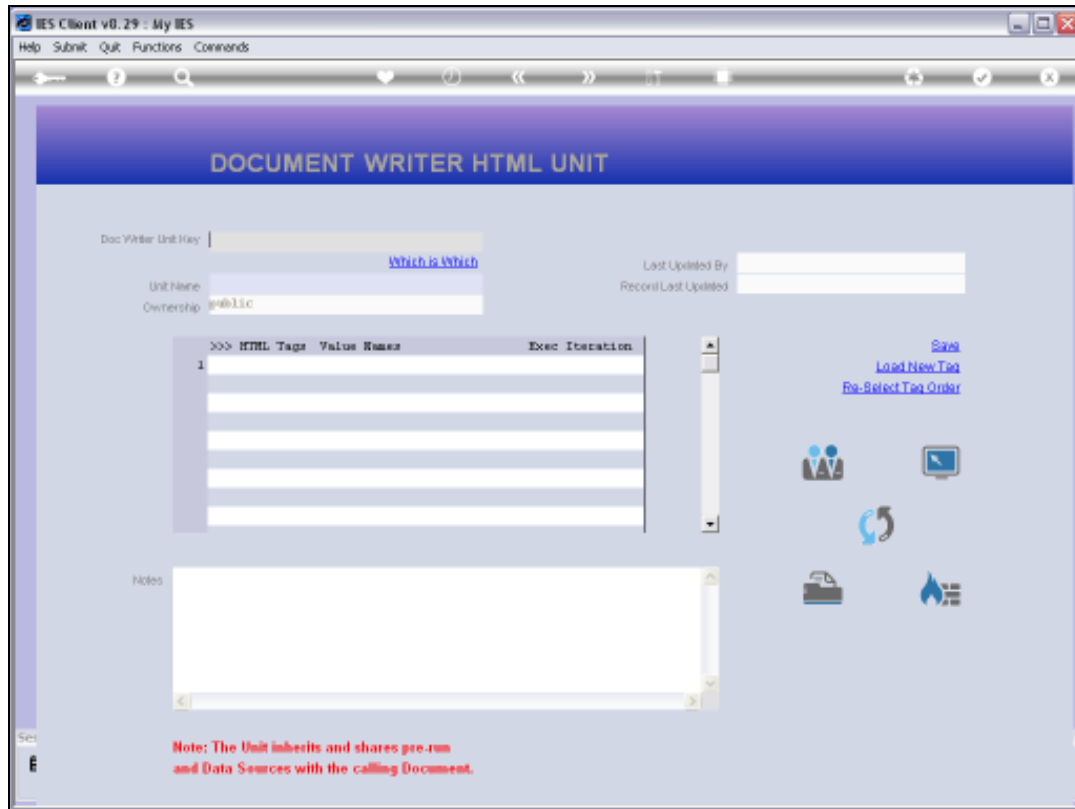
Slide 17

Slide notes:



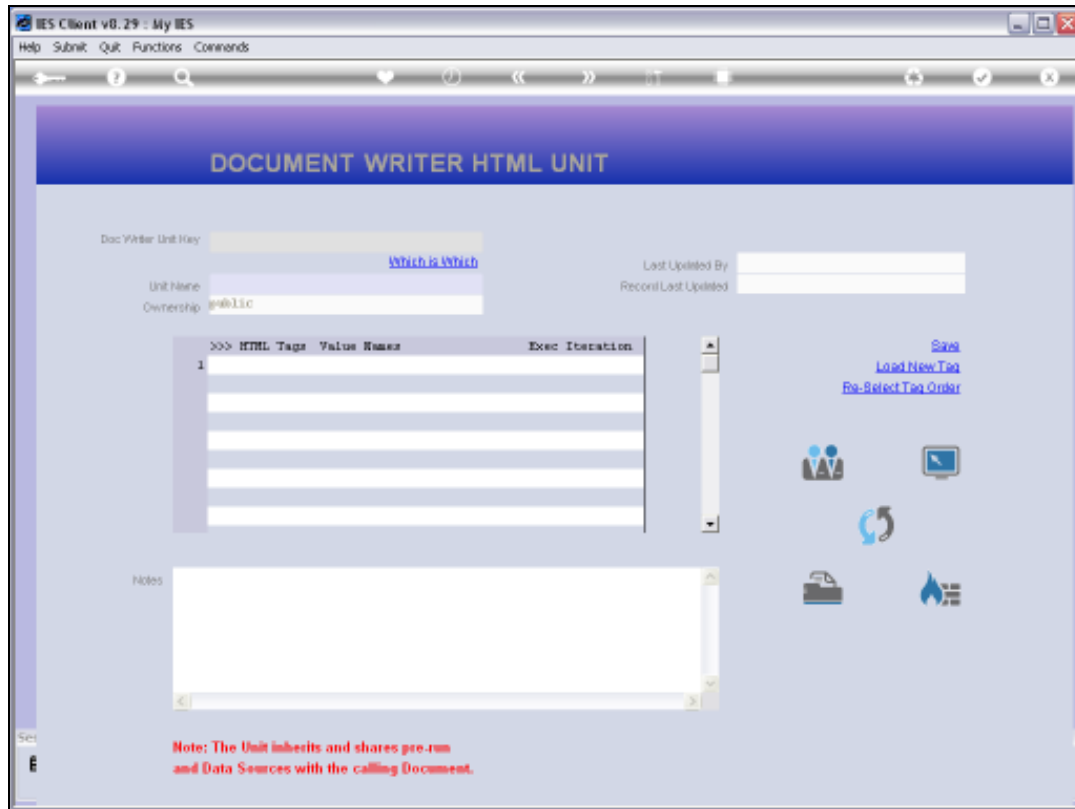
Slide 18

Slide notes:



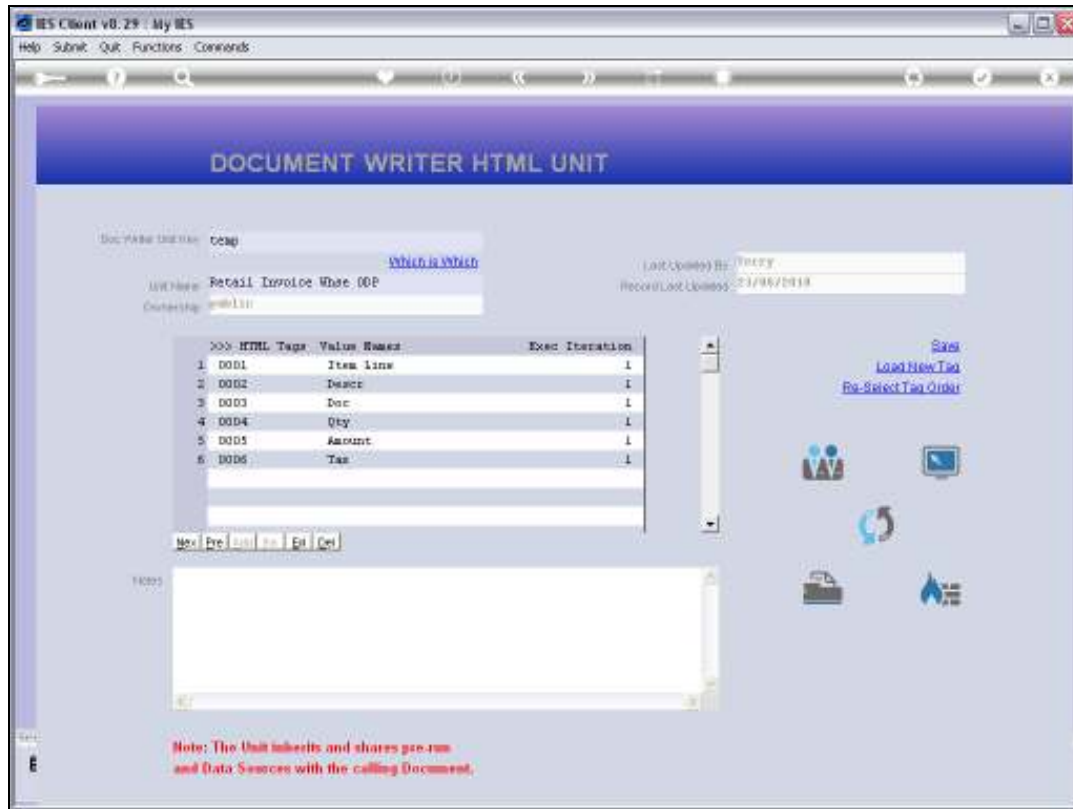
Slide 19

Slide notes:



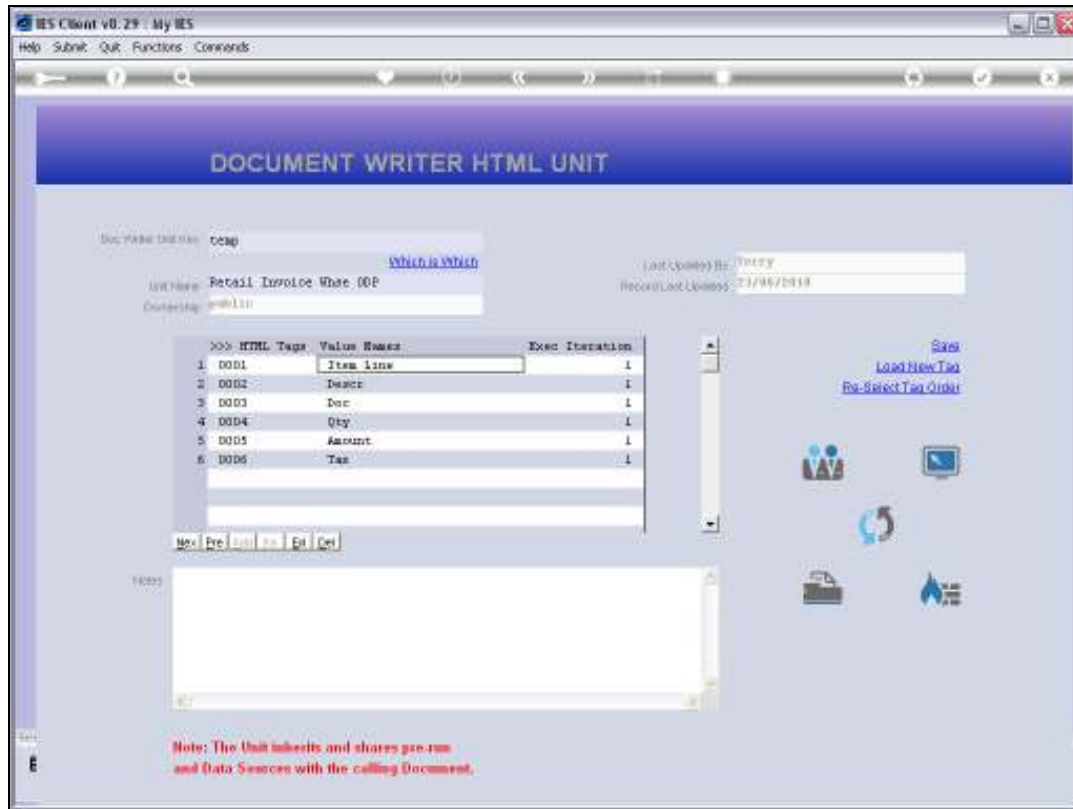
Slide 20

Slide notes:



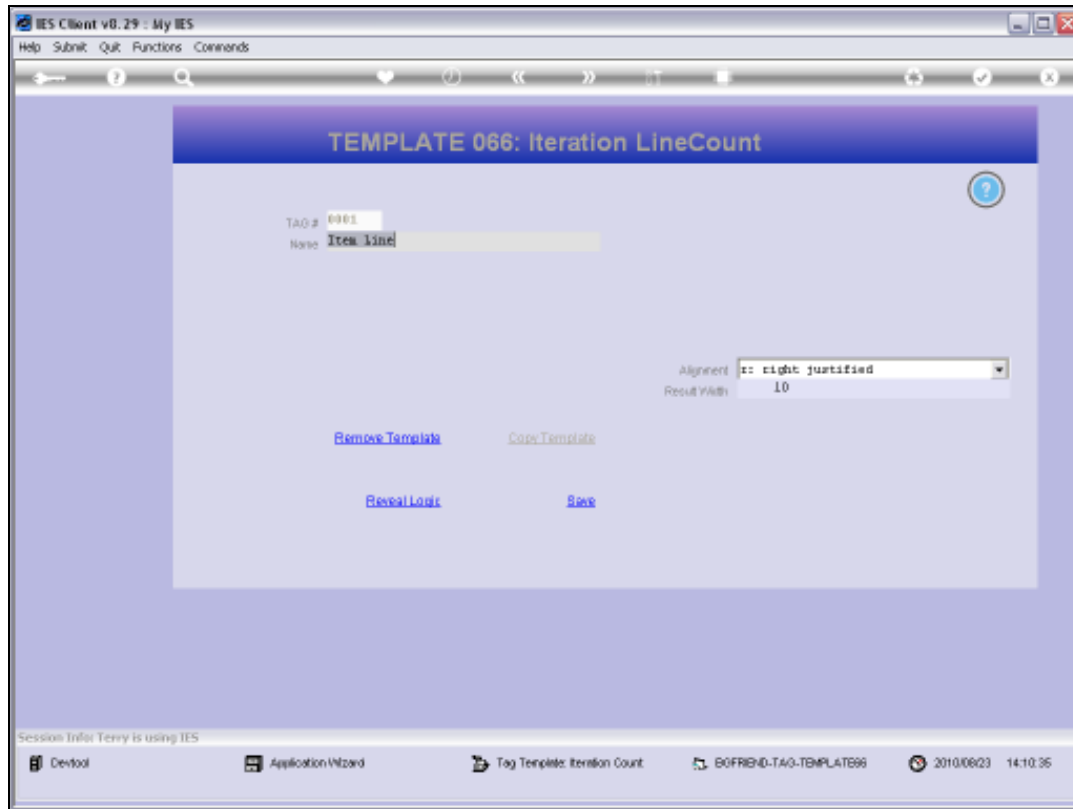
Slide 21

Slide notes: The 1st Tag is the Item Line Count.



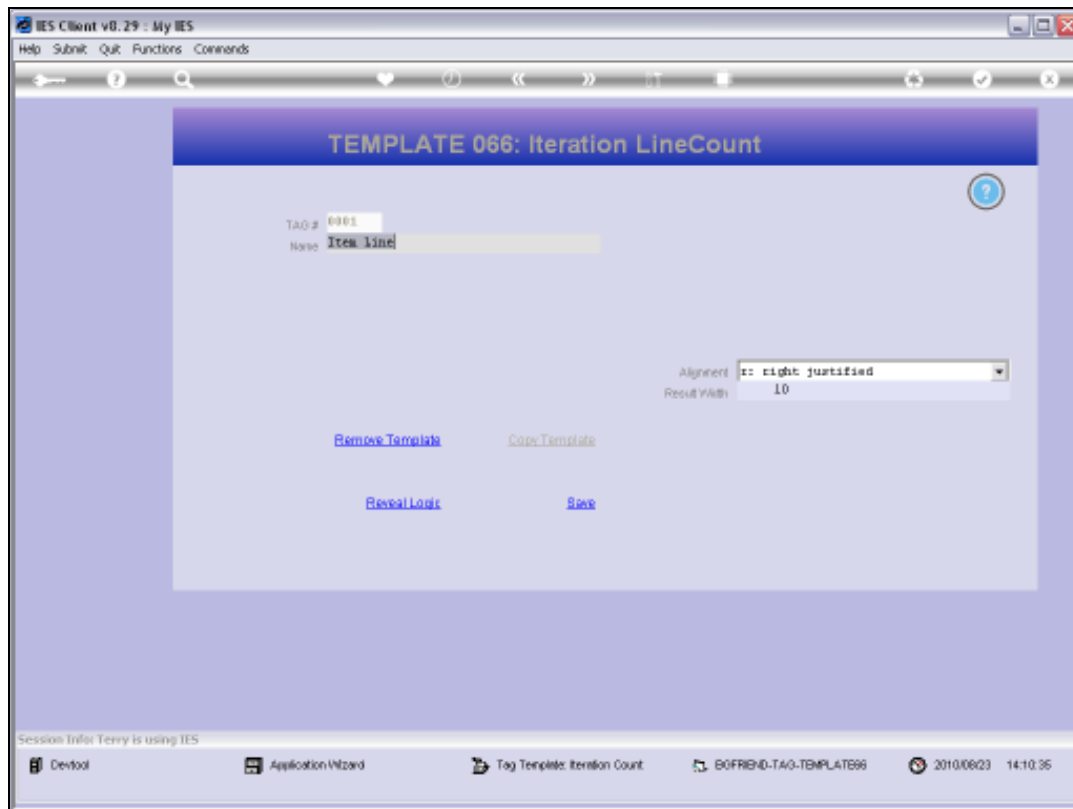
Slide 22

Slide notes:



Slide 23

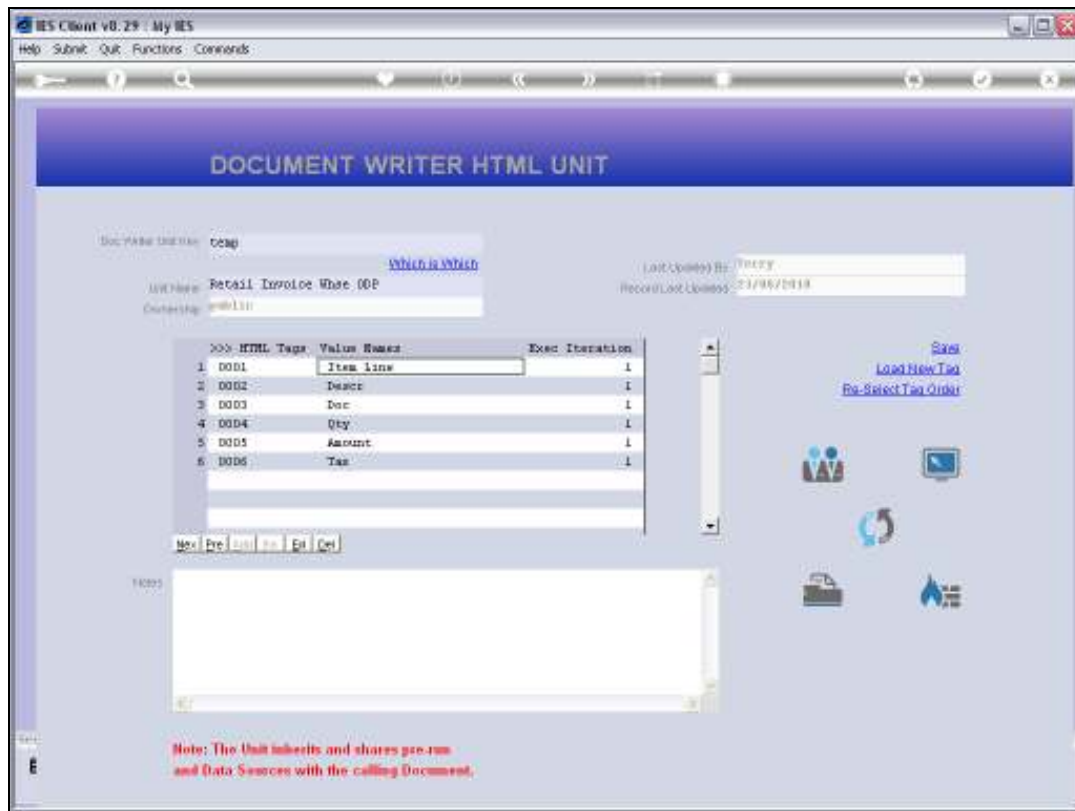
Slide notes: And it uses the Template for 'Iteration Line Count'.



Slide 24

Slide notes:





Slide 25

Slide notes: This Template is ALWAYS used with a Data Source Record where the Unit is based on an included Data Set where a number of Fields have correlated multi or iterative Values.