

Slide 1

Slide notes: If we want to use a different Template on a Tag, then that is quite easy to do.

IES Client v8.29 : My IES

Help Submit Quit Functions Commands

TEMPLATE 002: GL Numeric - Single Rule

Tag # 0000

Name Bents Bud

Name #1 (Mandatory) Libud-out LEDGER Budget

Name #2 (Optional)

Names Operation 1: no operation

Acct Selection Basis 18000 P&L POSITION

Flag Value to Select 18

Sub Acct Lock

Tag Addressing relative

Period Mapping 2: tag maps to current year

Forex Exchange Rate 1: not used

Financial Scaling 1: no scaling

Rounding for Numbers 1: do not apply rounding

Display Mask MR02,1

Alignment 1: right justified

Result Width 21

Bold? NORMAL

Underline? NORMAL

Sign Convert? (+/-)

Tag Result ALWAYS RETURN A RESULT

Operator *

Conditional Value

Copy Template

Remove Template

Reveal Link

Save

Session Info: Terry is using IES

Desktop Application Wizard Tag Business Template BOFRIND-TAG-TEMPLATE1 2010/09/24 15:42:13

Slide 2

Slide notes: This Tag is currently using the 'GL Single Rule' Template. So if we decide that we want to change it, and use the 'GL Double Rule' Template instead, then we can just choose 'Remove Template'.

IES Client v8.29 : My IES

Help Submit Quit Functions Commands

← ? 🔍 ♡ ⌚ ⏪ ⏩ ⏴ ⏵ ⏶ ⏷ ⏸ ⏹ ⏺ ⏻ ⏼ ⏽ ⏾ ⏿

TEMPLATE 002: GL Numeric - Single Rule

TAO # 04 08
Name Rents Bud

Name #1 (Mandatory) LIBRARY-OUR LEADER Budget
Name #2 (Optional)
Names Operation 1: no operation
Acct Selection Basis 19008 P&L POSITION
Flag Value to Select 18
Sub Acct Lock

[Copy Template](#)
[Remove Template](#)
[Reveal Link](#)
[Save](#)

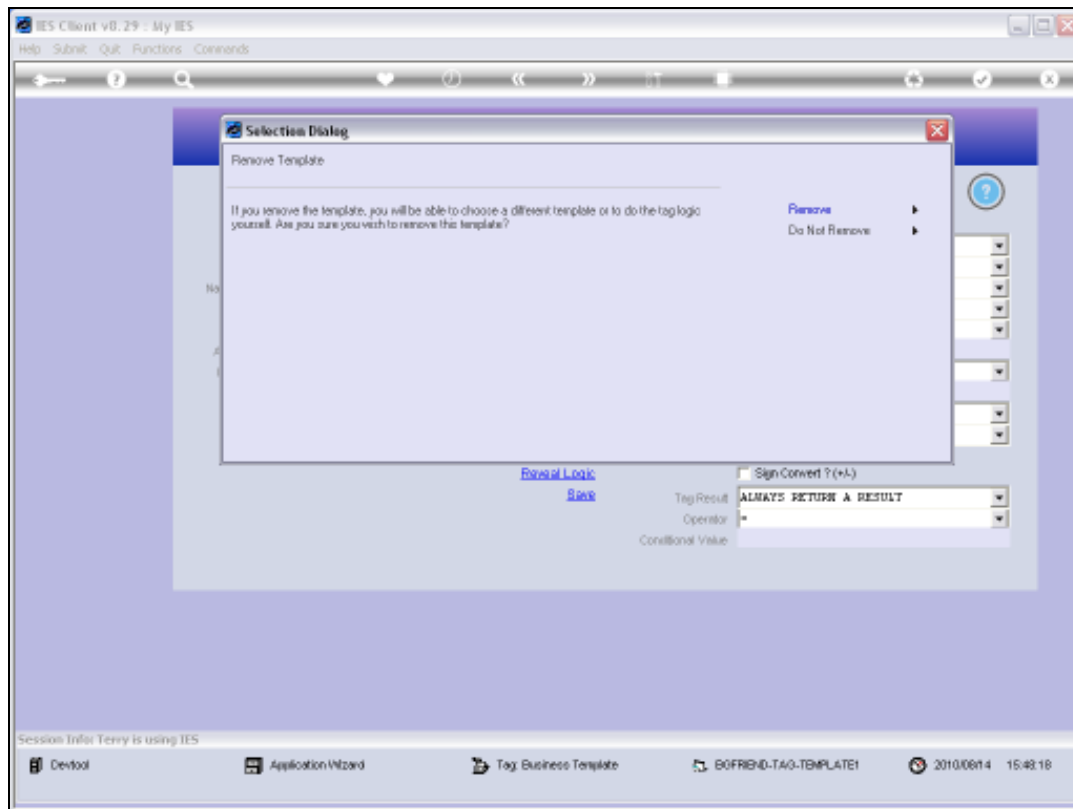
Tag Addressing relative
Period Mapping 2: tag maps to current year
Forex Exchange Rate 1: not used
Financial Scaling 1: no scaling
Rounding for Numbers 1: do not apply rounding
Display Mask BR02,i
Alignment 1: right justified
Result Width 21
Bold? NORMAL
Underline? NORMAL
☐ Sign Convert ? (+/-)
Tag Result ALWAYS RETURN A RESULT
Operator =
Conditional Value

Session Info: Terry is using IES

Desktop Application Wizard Tag Business Template BOFRIND-TAO-TEMPLATE1 2010/09/24 15:42:13

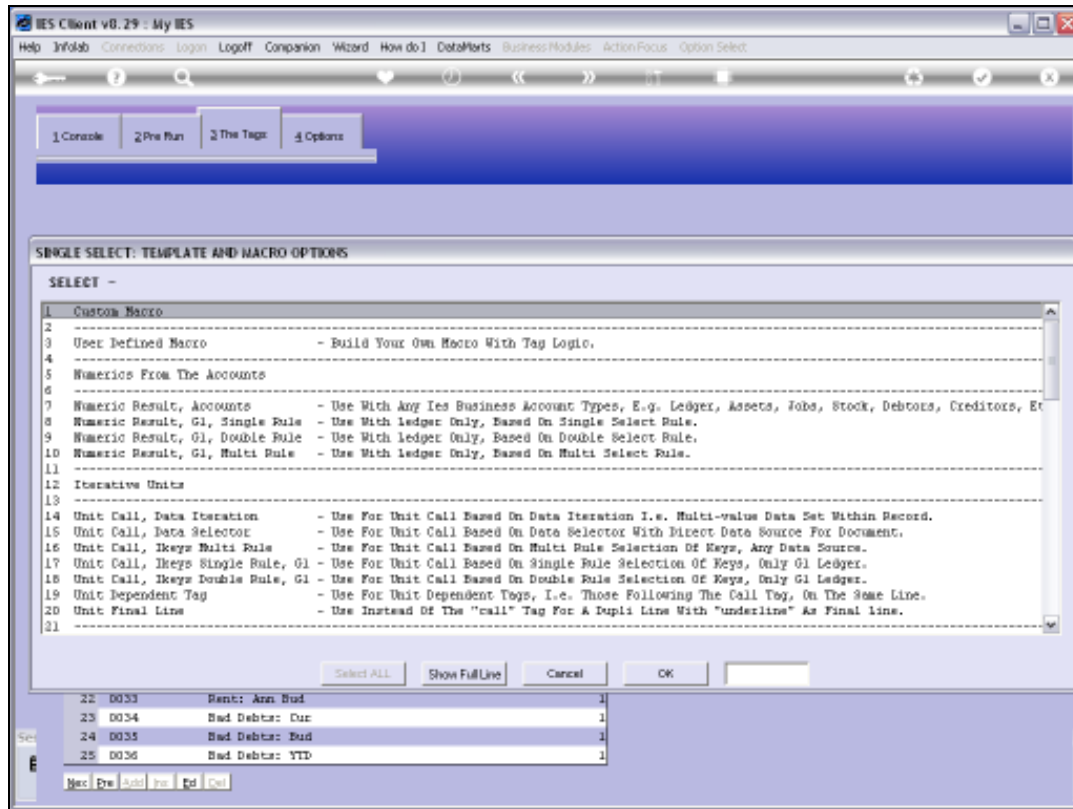
Slide 3

Slide notes:



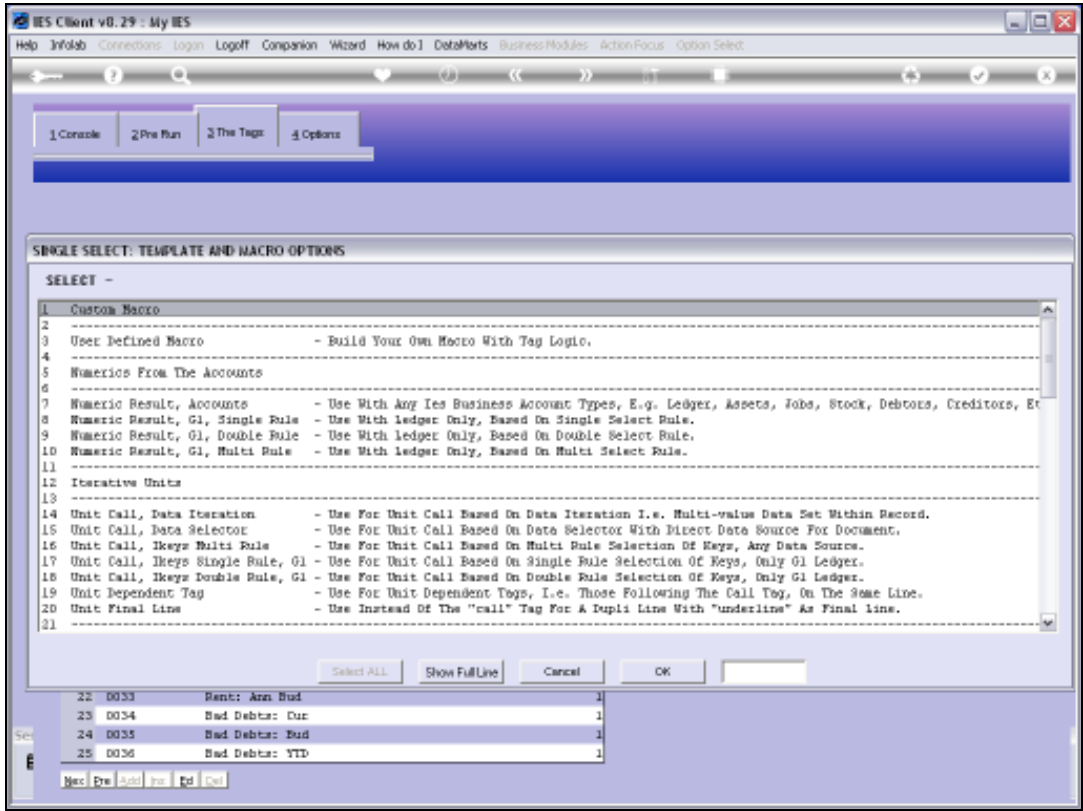
Slide 4

Slide notes:



Slide 5

Slide notes: Now we get to select a new Template to use.



Slide 6

Slide notes:

TEMPLATE 007: GL Numeric - Double Rule

TAG #

Name

Name #1 (Mandatory)

Name #2 (Optional)

Names Operation

1st Acct Selection Basis

Flag Value to Select

Rule

2nd Account Selection

Flag Value to Select

Sub Acct Lock

Tag Addressing

Period Mapping

Forex Exchange Rate

Financial Scaling

Rounding for Numbers

Display Mask

Alignment

Result Width

Bold?

Underline?

☐ Sign Convent ? (+/-)

Tag Result

Test Operator

Conditional Value

[Copy Template](#)
[Remove Template](#)
[Reveal Locks](#)
[Save](#)

Session Info: Terry is using IES

Desktop Application Wizard Tag Business Template BOFRIND-TAG-TEMPLATE10 2010/09/14 15:43:26

Slide 7

Slide notes: And from here, we choose the settings for the new Template before we will be able to choose SAVE to install the new Template on the Tag.

IES Client v8.29 : My IES

Help Submit Quit Functions Commands

TEMPLATE 007: GL Numeric - Double Rule

Tag # 0430
Name Rents Bud

Name #1 (Mandatory)
Name #2 (Optional)
Names Operation 1: no operation

1st Acct Selection Basis
Flag Value to Select
Rule and

2nd Account Selection
Flag Value to Select
Sub Acct Lock

Tag Addressing relative
Period Mapping 2: tag maps to current year
Forex Exchange Rate 1: not used
Financial Scaling 1: no scaling
Rounding for Numbers 1: do not apply rounding

Display Mask M02,1
Alignment r: right justified
Result Width 21
Bold? normal
Underline? normal

☐ Sign Convent ? (+/-)

Tag Result always return a result
Test Operator =
Conditional Value

[Copy Template](#)
[Remove Template](#)
[Reveal Locks](#)
[Save](#)

Session Info: Terry is using IES

Desktop Application Wizard Tag Business Template BOFRIND-TAG-TEMPLATE10 2010/09/14 15:43:27

Slide 8

Slide notes: