

## Slide 1

Slide notes: Every Tag usually has a Tag Macro or a Tag Template, and a Tag Template creates it's own Macro.

IES Client v8.29 : My IES

Help Submit Quit Functions Commands

TEMPLATE 002: GL Numeric - Single Rule

Tag # 0429  
Name Rents Due

Name #1 (Mandatory) Liabilities LEDGER Actual  
Name #2 (Optional)  
Names Operation 1: no operation  
Acct Selection Basis 1908 P&L POSITION  
Flag Value to Select 18  
Sub Acct Lock

Tag Addressing relative  
Period Mapping 2: tag maps to current year  
Forex Exchange Rate 1: not used  
Financial Scaling 1: no scaling  
Rounding for Numbers 1: do not apply rounding  
Display Mask MR02,1  
Alignment 1: right justified  
Result Width 21  
Bold? NORMAL  
Underline? NORMAL  
☐ Sign Convert (+/-)  
Tag Result ALWAYS RETURN A RESULT  
Operator =  
Conditional Value

[Copy Template](#)  
[Remove Template](#)  
[Reveal Lock](#)  
[Save](#)

Session Info: Terry is using IES

Desktop Application Wizard Tag Business Template BOFRIND-TAG-TEMPLATE1 2010/09/14 15:28:31

Slide 2

Slide notes:

IES Client v8.29 : My IES

Help Submit Quit Functions Commands

TEMPLATE 002: GL Numeric - Single Rule

TAG # 0029

Name Rentals Due

Name #1 (Mandatory) List-of-due LEDGER Actual

Name #2 (Optional)

Names Operation 1: no operation

Acct Selection Basis 19908 P&L POSITION

Flag Value to Select 18

Sub Acct Lock

Tag Addressing relative

Period Mapping 2: tag maps to current year

Forex Exchange Rate 1: not used

Financial Scaling 1: no scaling

Rounding for Numbers 1: do not apply rounding

Display Mask MR02,i

Alignment 1: right justified

Result Width 21

Bold? NORMAL

Underline? NORMAL

Sign Convent ? (+/-)

Tag Result ALWAYS RETURN A RESULT

Operator =

Conditional Value

Copy Template

Remove Template

Reveal Logic

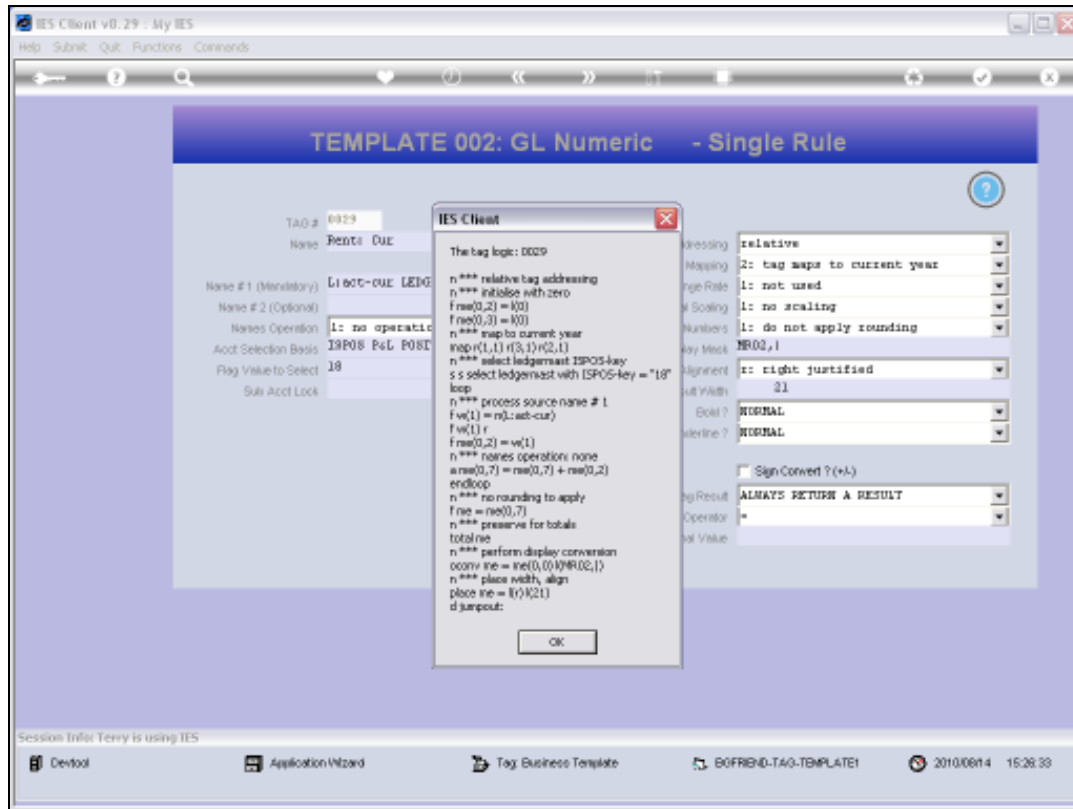
Save

Session Info: Terry is using IES

Devtool Application Wizard Tag Business Template BOFRIND-TAG-TEMPLATE1 2010/09/24 15:28:31

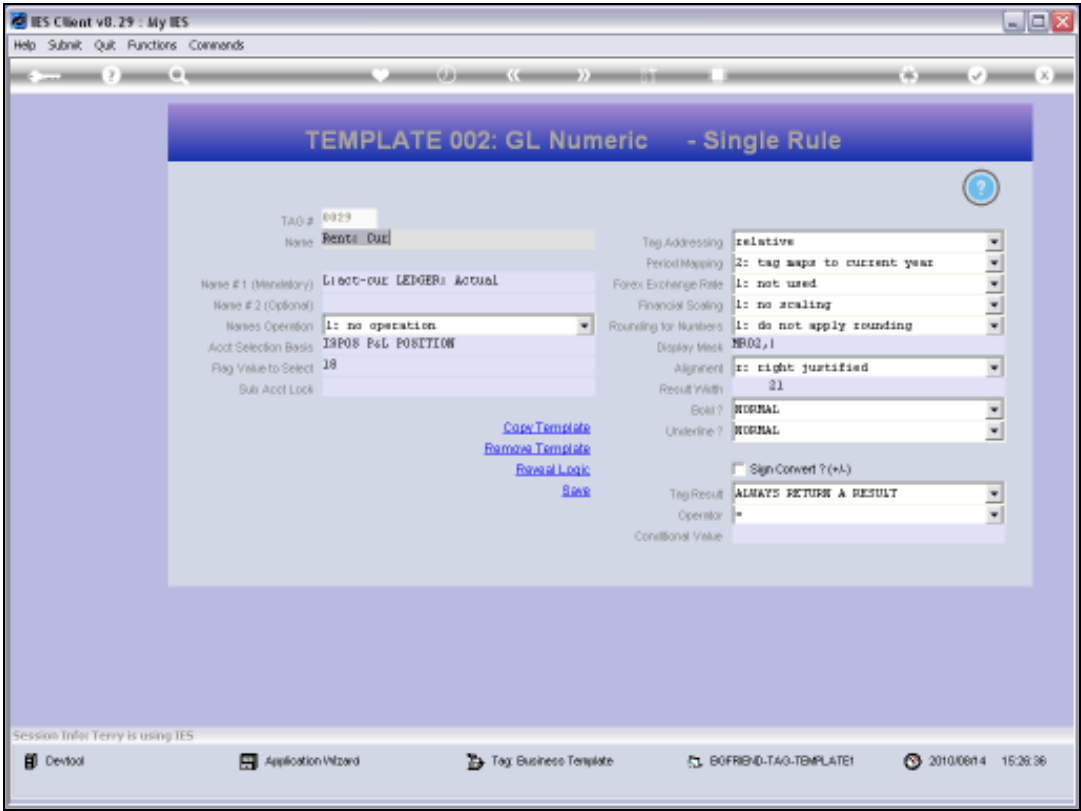
## Slide 3

Slide notes: If we choose 'Reveal Logic' on a Template, we will see the Commands in the Macro, just as we do for a Tag without a Template.

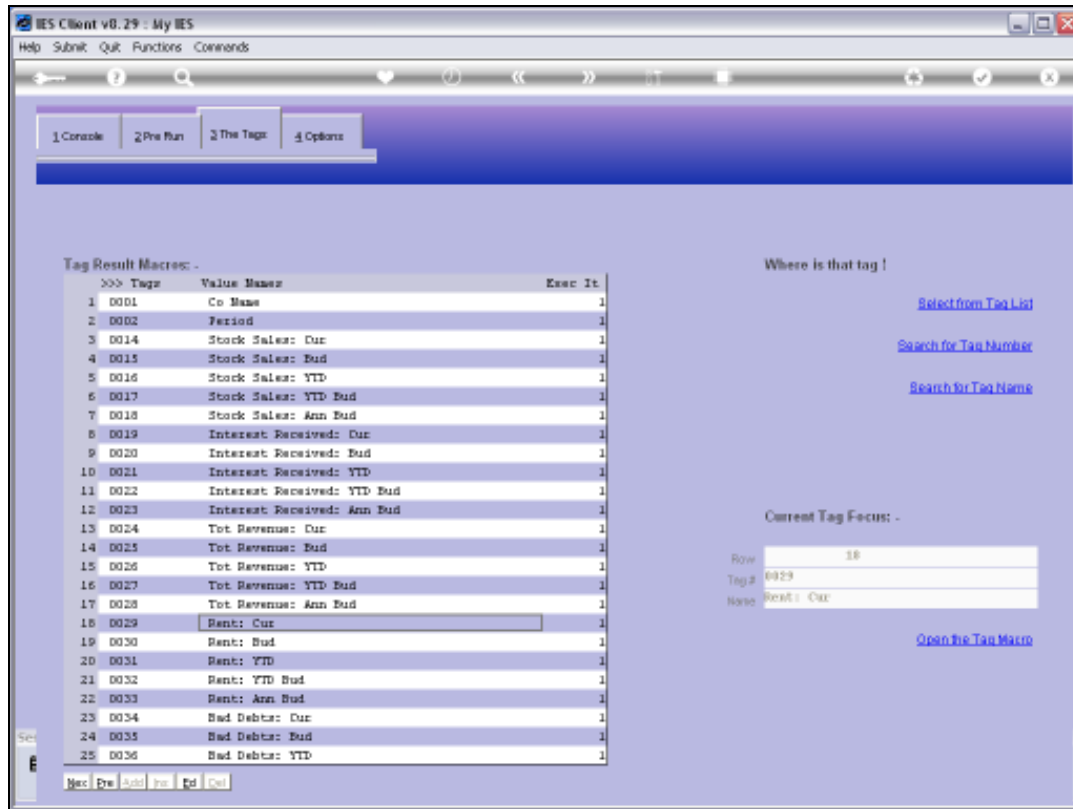


## Slide 4

Slide notes: These are the Tag Logic Commands that make up the Macro, i.e. the logic that will calculate the answer for this Tag when the Report is performed. When we work with any Tag individually, and use the SAVE option, then these Commands are verified as to whether they are up-to-date in accordance with the Template settings.

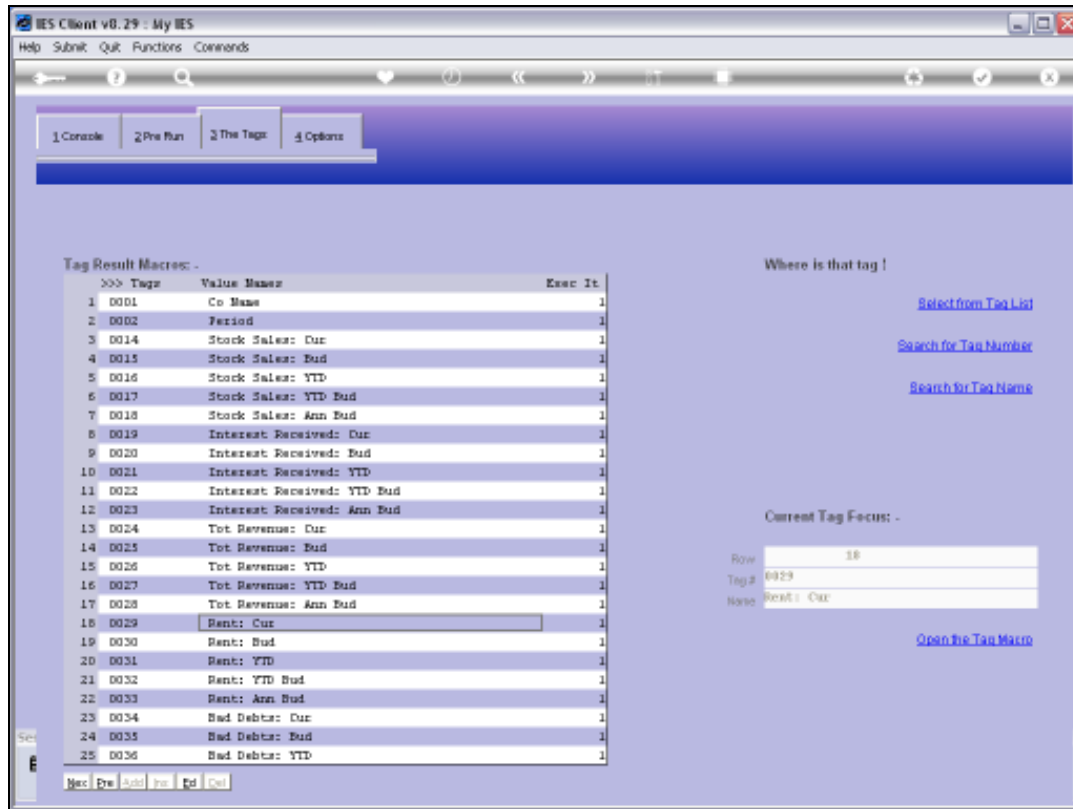


Slide 5  
Slide notes:



Slide 6

Slide notes:



Slide 7

Slide notes:



Slide 8

Slide notes:





Slide 9

Slide notes:



Slide 10

Slide notes:



# Slide 11

Slide notes: Yet when we apply mass updates, then these Tag Commands are not automatically re-generated until we instruct DocWriter to do so.



Slide 12

Slide notes:



Slide 13

Slide notes:



Slide 14

Slide notes:



### Slide 15

Slide notes: The function to 'Re-generate Template Commands' is used safely at any time, and especially after applying mass updates, to ensure that all Tag Templates have appropriate command logic.



Slide 16

Slide notes:





Slide 17

Slide notes: