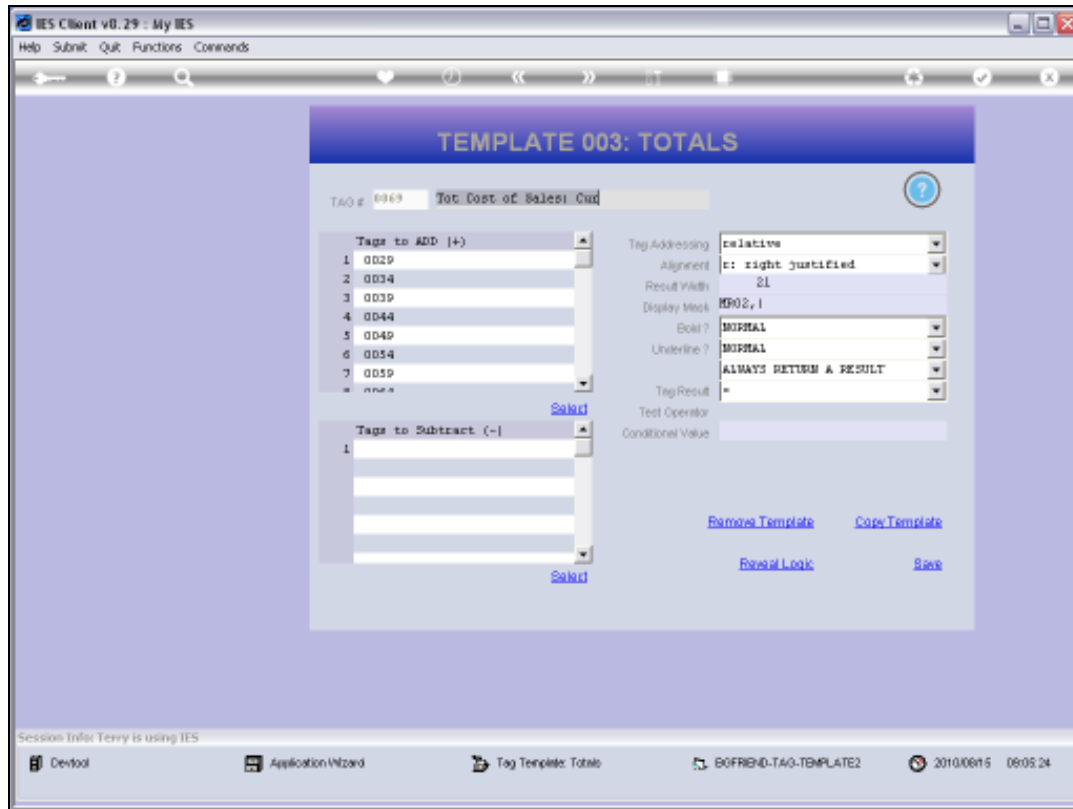


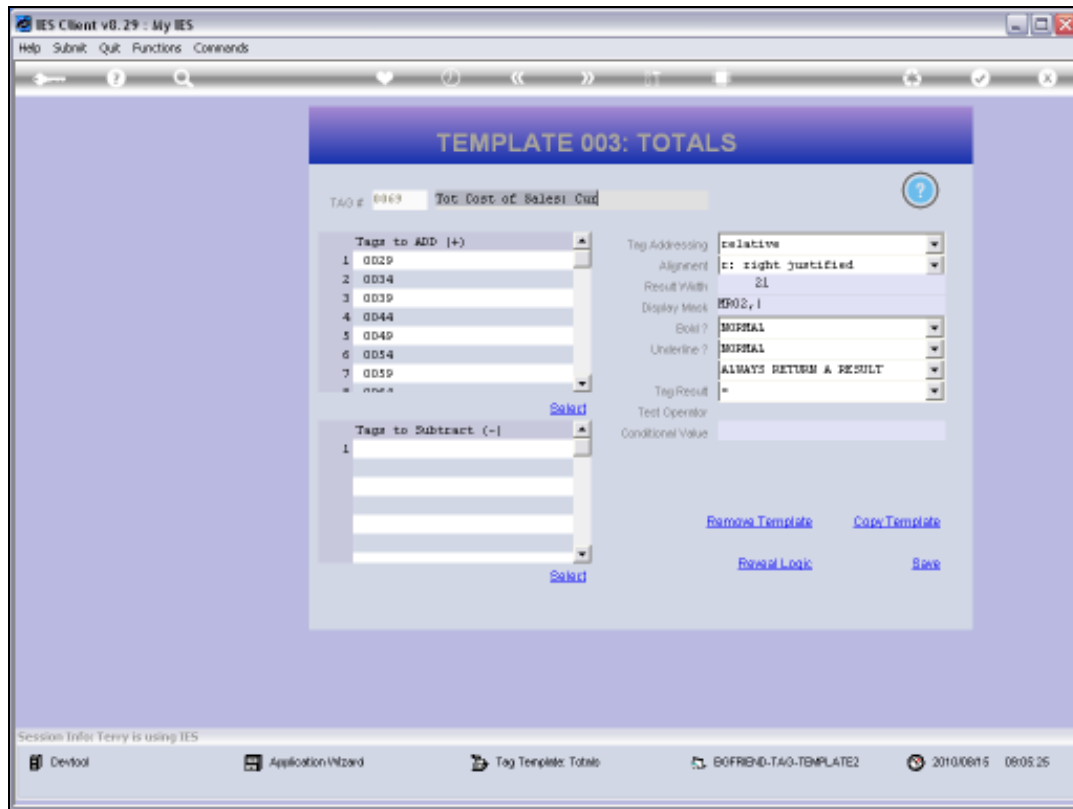
## Slide 1

Slide notes: We are now going to look at the effect of Tag 'Relative' and Tag 'Absolute' addressing.



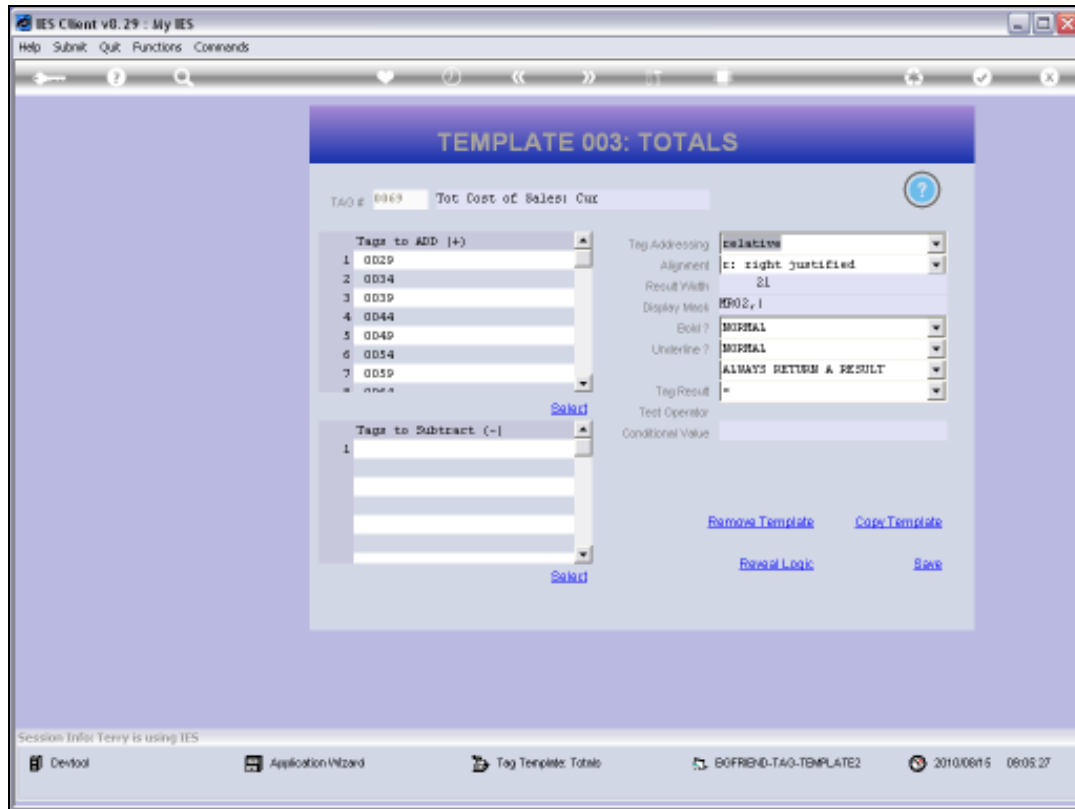
Slide 2

Slide notes:



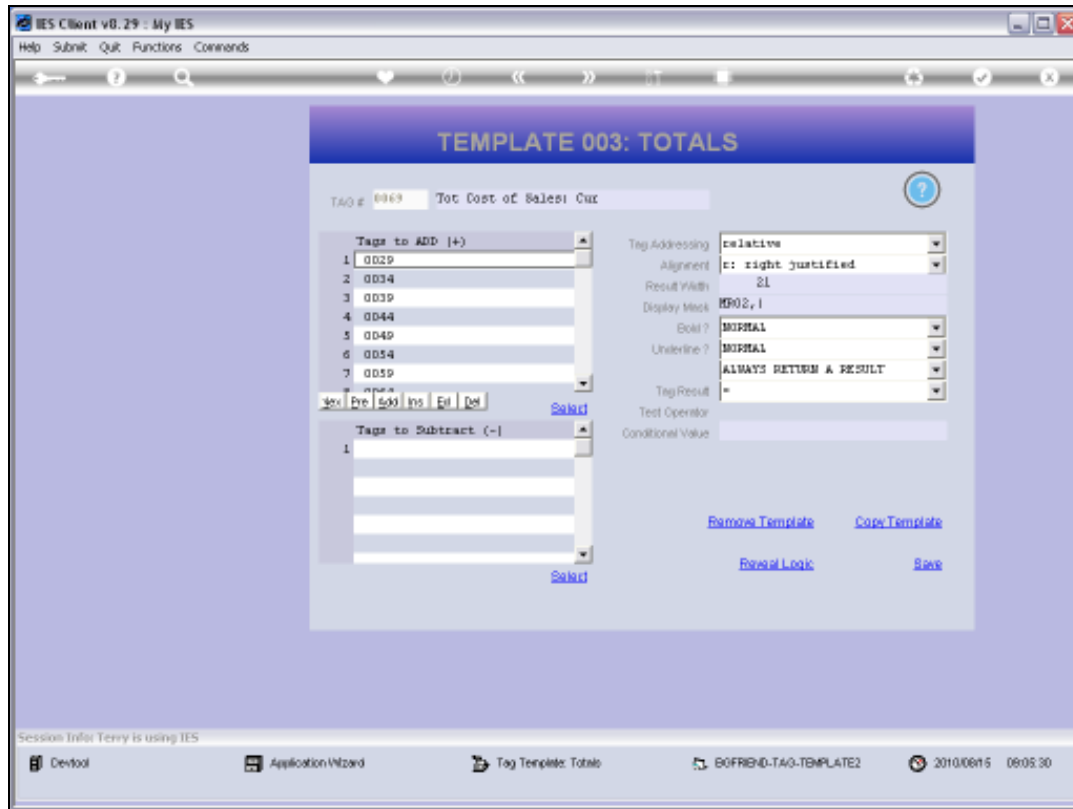
### Slide 3

Slide notes: On Tag Templates, we usually have the 'Tag Addressing' field, and it always defaults to 'Relative', but we can also choose 'Absolute' if we do not want the system to change the Tag references during copying of the Template to other Tags.



## Slide 4

Slide notes: This Tag is using the Template for 'Total from Other Tags', meaning that the answer for this Tag is derived by adding the values from a list of other Tags. We observe here that this list of other Tags starts with Tag 29.



Slide 5

Slide notes:



Slide 6

Slide notes: Now we want to see how this looks on the Document Layout.

W127.0.0.1\bridge\X1556832772.htm - Windows Internet Explorer

W127.0.0.1\bridge\X1556832772.htm

File Edit View Favorites Tools Help

Google Search

W127.0.0.1\bridge\X1556832772.htm

Page Safety Tools

[0001]					
Profit and Loss (Income Statement) for [0002]					
	Actual Current	Budget	Actual YTD	Budget YTD	Annual Budget
Revenue					
Stock Sales	[0014]	[0015]	[0016]	[0017]	[0018]
Other	[0019]	[0020]	[0021]	[0022]	[0023]
Total Revenue	[0024]	[0025]	[0026]	[0027]	[0028]
Costs					
Rent and Utilities	[0029]	[0030]	[0031]	[0032]	[0033]
Bad Debts	[0034]	[0035]	[0036]	[0037]	[0038]
Staff Costs	[0039]	[0040]	[0041]	[0042]	[0043]
Office Costs	[0044]	[0045]	[0046]	[0047]	[0048]
Audit Fees	[0049]	[0050]	[0051]	[0052]	[0053]
Computer Systems	[0054]	[0055]	[0056]	[0057]	[0058]
Equipment Maintenance	[0059]	[0060]	[0061]	[0062]	[0063]
Sundry Expenses	[0064]	[0065]	[0066]	[0067]	[0068]
Total Cost of Sales	[0069]	[0070]	[0071]	[0072]	[0073]
[0084]					
[0085] Gross Profit	[0074]	[0075]	[0076]	[0077]	[0078]
[0087] Gross Loss	[0079]	[0080]	[0081]	[0082]	[0083]
[0097] [0091] [0092] [0093] [0094] [0095] [0096] [0098]					

Slide 7

Slide notes:

W127.0.0.1\bridge\X1556832772.htm - Windows Internet Explorer

W127.0.0.1\bridge\X1556832772.htm

File Edit View Favorites Tools Help

Google Search

W127.0.0.1\bridge\X1556832772.htm

Page Safety Tools

[0001]					
Profit and Loss (Income Statement) for [0002]					
	Actual Current	Budget	Actual YTD	Budget YTD	Annual Budget
Revenue					
Stock Sales	[0014]	[0015]	[0016]	[0017]	[0018]
Other	[0019]	[0020]	[0021]	[0022]	[0023]
Total Revenue	[0024]	[0025]	[0026]	[0027]	[0028]
Costs					
Rent and Utilities	[0029]	[0030]	[0031]	[0032]	[0033]
Bad Debts	[0034]	[0035]	[0036]	[0037]	[0038]
Staff Costs	[0039]	[0040]	[0041]	[0042]	[0043]
Office Costs	[0044]	[0045]	[0046]	[0047]	[0048]
Audit Fees	[0049]	[0050]	[0051]	[0052]	[0053]
Computer Systems	[0054]	[0055]	[0056]	[0057]	[0058]
Equipment Maintenance	[0059]	[0060]	[0061]	[0062]	[0063]
Sundry Expenses	[0064]	[0065]	[0066]	[0067]	[0068]
Total Cost of Sales	[0069]	[0070]	[0071]	[0072]	[0073]
[0084]					
[0085] Gross Profit	[0074]	[0075]	[0076]	[0077]	[0078]
[0087] Gross Loss	[0079]	[0080]	[0081]	[0082]	[0083]
[0097] [0091] [0092] [0093] [0094] [0095] [0096] [0098]					

## Slide 8

Slide notes: Here is Tag 69, and it is a total of the Tags in the column above, starting with Tag 29, as we saw on our Template.



W127.0.0.1\bridge\X1556832772.htm - Windows Internet Explorer

W127.0.0.1\bridge\X1556832772.htm

File Edit View Favorites Tools Help

Google Search Share Save Check Translate AutoFill Sign In

W127.0.0.1\bridge\X1556832772.htm

[0001] Profit and Loss (Income Statement) for [0002]					
	Actual Current	Budget	Actual YTD	Budget YTD	Annual Budget
Revenue					
Stock Sales	[0014]	[0015]	[0016]	[0017]	[0018]
Other	[0019]	[0020]	[0021]	[0022]	[0023]
Total Revenue	[0024]	[0025]	[0026]	[0027]	[0028]
Costs					
Rent and Utilities	[0029]	[0030]	[0031]	[0032]	[0033]
Bad Debts	[0034]	[0035]	[0036]	[0037]	[0038]
Staff Costs	[0039]	[0040]	[0041]	[0042]	[0043]
Office Costs	[0044]	[0045]	[0046]	[0047]	[0048]
Audit Fees	[0049]	[0050]	[0051]	[0052]	[0053]
Computer Systems	[0054]	[0055]	[0056]	[0057]	[0058]
Equipment Maintenance	[0059]	[0060]	[0061]	[0062]	[0063]
Sundry Expenses	[0064]	[0065]	[0066]	[0067]	[0068]
Total Cost of Sales	[0069]	[0070]	[0071]	[0072]	[0073]
[0084]					
[0085]Gross Profit	[0074]	[0075]	[0076]	[0077]	[0078]
[0087]Gross Loss	[0079]	[0080]	[0081]	[0082]	[0083]
[0097] [0091] [0092] [0093] [0094] [0095] [0096] [0098]					

Slide 9

Slide notes:

W127.0.0.1\bridge\X1556832772.htm - Windows Internet Explorer

W127.0.0.1\bridge\X1556832772.htm

File Edit View Favorites Tools Help

Google Search Share Save Check Translate AutoFill Sign In

Free-Hotel

W127.0.0.1\bridge\X1556832772.htm

Profit and Loss (Income Statement) for (0002)

	Actual Current	Budget	Actual YTD	Budget YTD	Annual Budget
Revenue					
Stock Sales	(0014)	(0015)	(0016)	(0017)	(0018)
Other	(0019)	(0020)	(0021)	(0022)	(0023)
Total Revenue	(0024)	(0025)	(0026)	(0027)	(0028)
Costs					
Rent and Utilities	(0029)	(0030)	(0031)	(0032)	(0033)
Bad Debts	(0034)	(0035)	(0036)	(0037)	(0038)
Staff Costs	(0039)	(0040)	(0041)	(0042)	(0043)
Office Costs	(0044)	(0045)	(0046)	(0047)	(0048)
Audit Fees	(0049)	(0050)	(0051)	(0052)	(0053)
Computer Systems	(0054)	(0055)	(0056)	(0057)	(0058)
Equipment Maintenance	(0059)	(0060)	(0061)	(0062)	(0063)
Sundry Expenses	(0064)	(0065)	(0066)	(0067)	(0068)
Total Cost of Sales	(0069)	(0070)	(0071)	(0072)	(0073)
(0084)					
(0085) Gross Profit	(0074)	(0075)	(0076)	(0077)	(0078)
(0087) Gross Loss	(0079)	(0080)	(0081)	(0082)	(0083)
(0097) (0091) (0092) (0093) (0094) (0095) (0096) (0098)					

Slide 10

Slide notes:

W127.0.0.1\bridge\X1556832772.htm - Windows Internet Explorer

W127.0.0.1\bridge\X1556832772.htm

File Edit View Favorites Tools Help

Google Search Share Save & Send Check Translate AutoFill Sign In

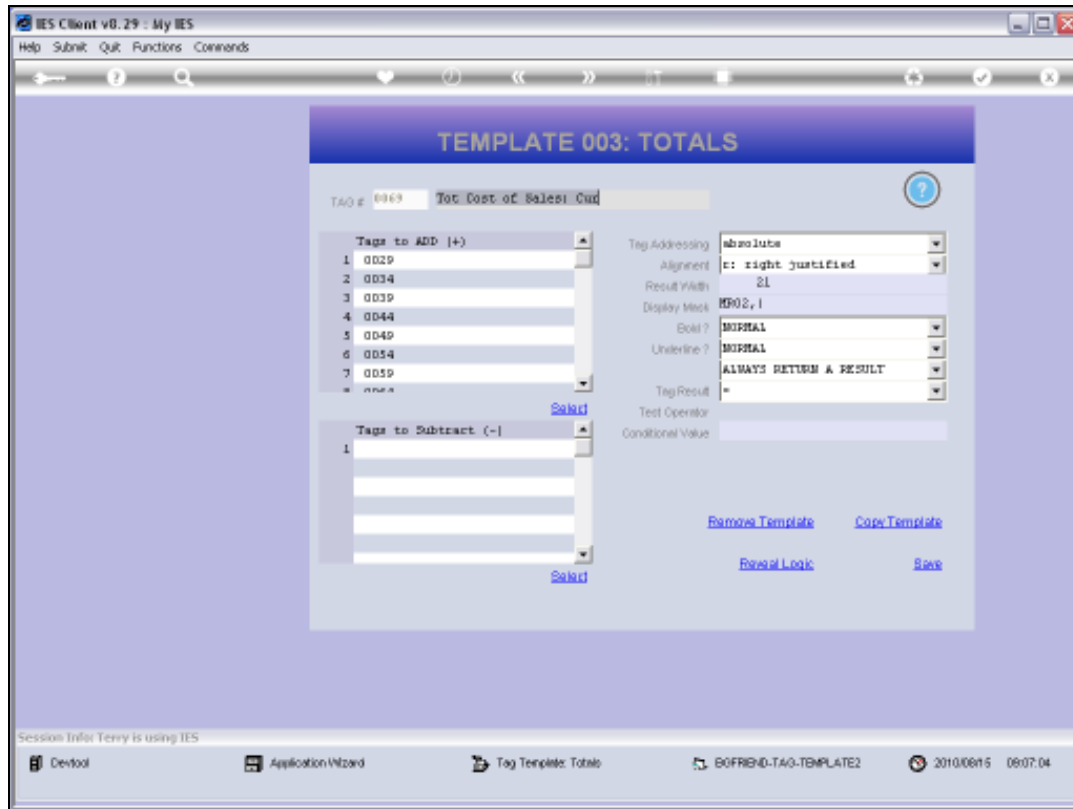
W127.0.0.1\bridge\X1556832772.htm

Profit and Loss (Income Statement) for [0002]

	Actual Current	Budget	Actual YTD	Budget YTD	Annual Budget
Revenue					
Stock Sales	[0014]	[0015]	[0016]	[0017]	[0018]
Other	[0019]	[0020]	[0021]	[0022]	[0023]
Total Revenue	[0024]	[0025]	[0026]	[0027]	[0028]
Costs					
Rent and Utilities	[0029]	[0030]	[0031]	[0032]	[0033]
Bad Debts	[0034]	[0035]	[0036]	[0037]	[0038]
Staff Costs	[0039]	[0040]	[0041]	[0042]	[0043]
Office Costs	[0044]	[0045]	[0046]	[0047]	[0048]
Audit Fees	[0049]	[0050]	[0051]	[0052]	[0053]
Computer Systems	[0054]	[0055]	[0056]	[0057]	[0058]
Equipment Maintenance	[0059]	[0060]	[0061]	[0062]	[0063]
Sundry Expenses	[0064]	[0065]	[0066]	[0067]	[0068]
Total Cost of Sales	[0069]	[0070]	[0071]	[0072]	[0073]
[0004]					
[0005] Gross Profit	[0074]	[0075]	[0076]	[0077]	[0078]
[0007] Gross Loss	[0079]	[0080]	[0081]	[0082]	[0083]
[0009] [0091] [0092] [0093] [0094] [0095] [0096] [0098]					

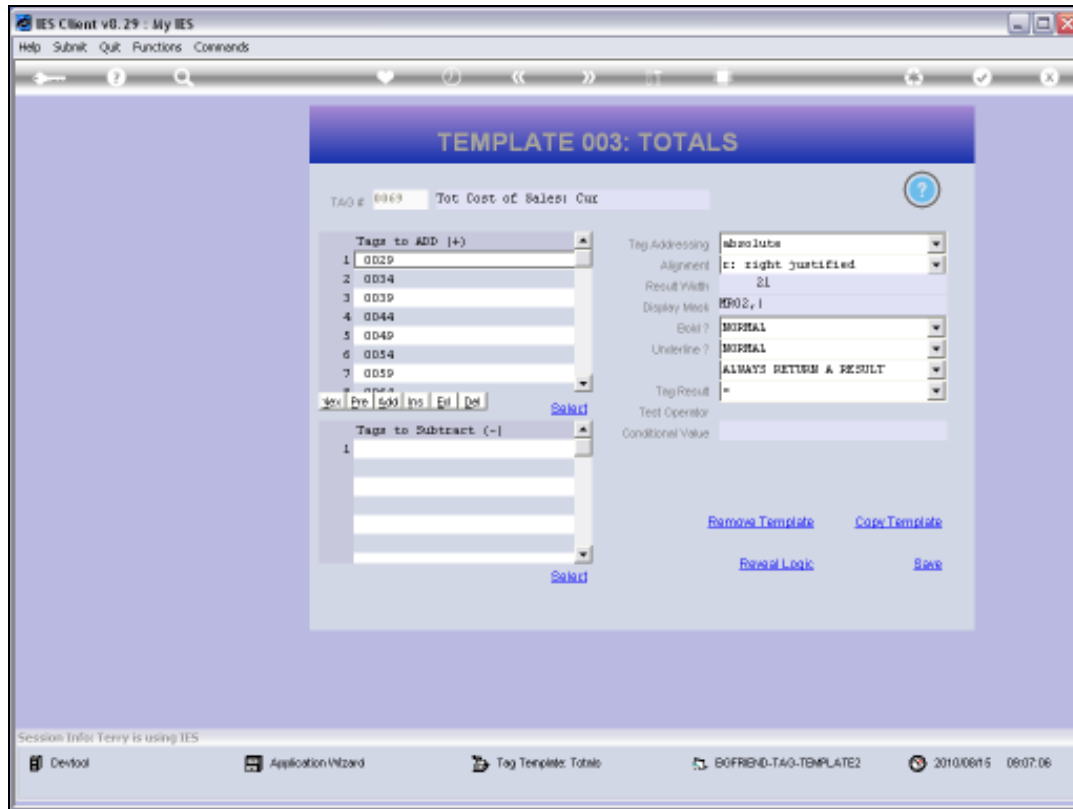
## Slide 11

Slide notes: Now imagine if we will copy the Template from Tag 69 to Tag 70, which works similarly as a Total. Then what will be copied into Tag 70? Will it be the list of Tags starting with 29, or will it be the list of Tags starting with Tag 30?



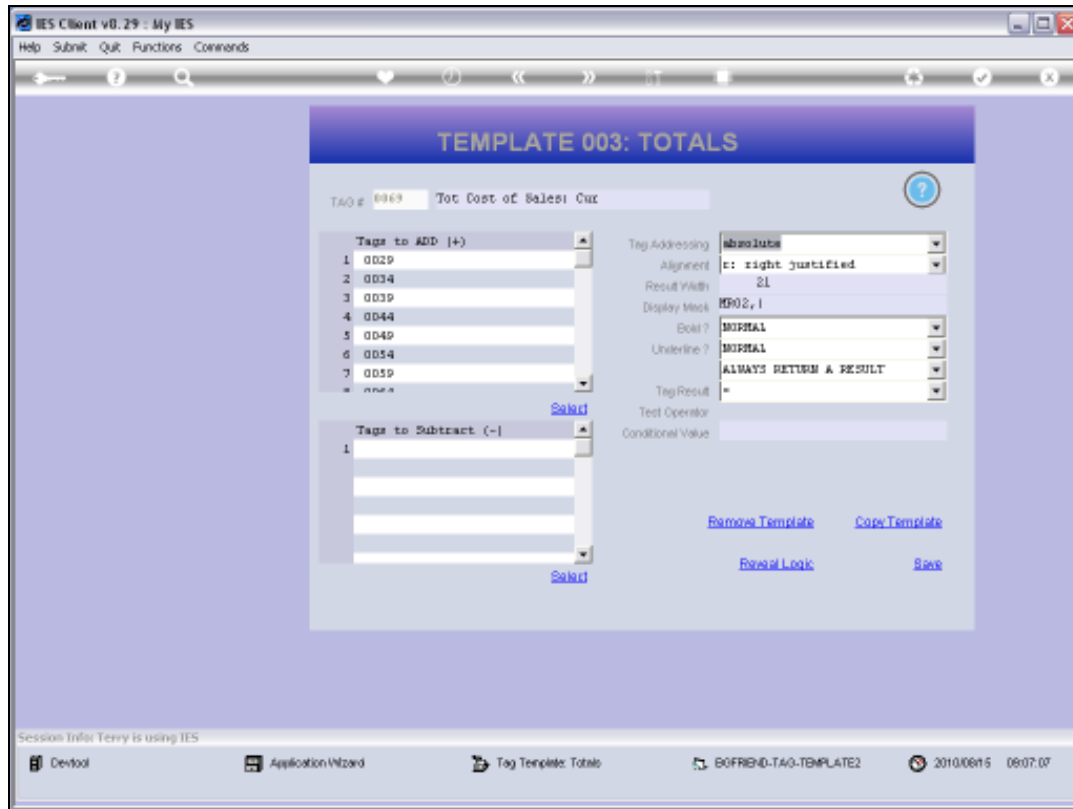
Slide 12

Slide notes: Now, back at Tag 69, we see the list of Tags starting with Tag 29.



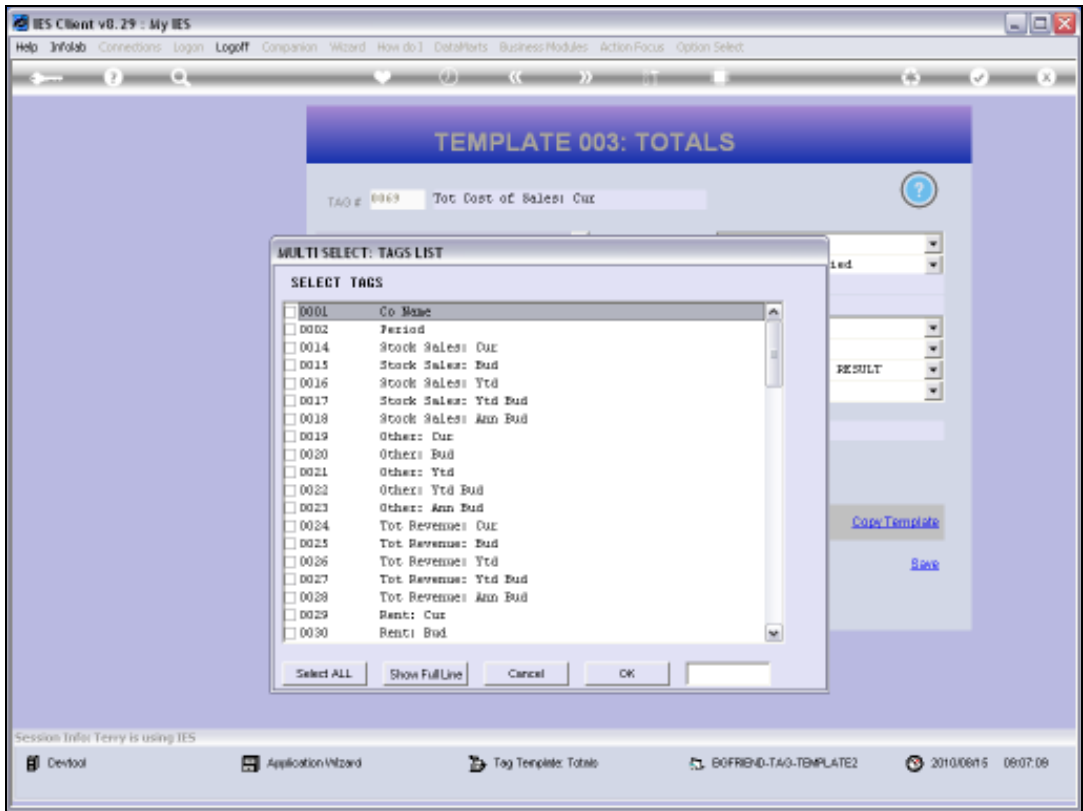
Slide 13

Slide notes: And we see that we use Tag Addressing as 'Absolute'.

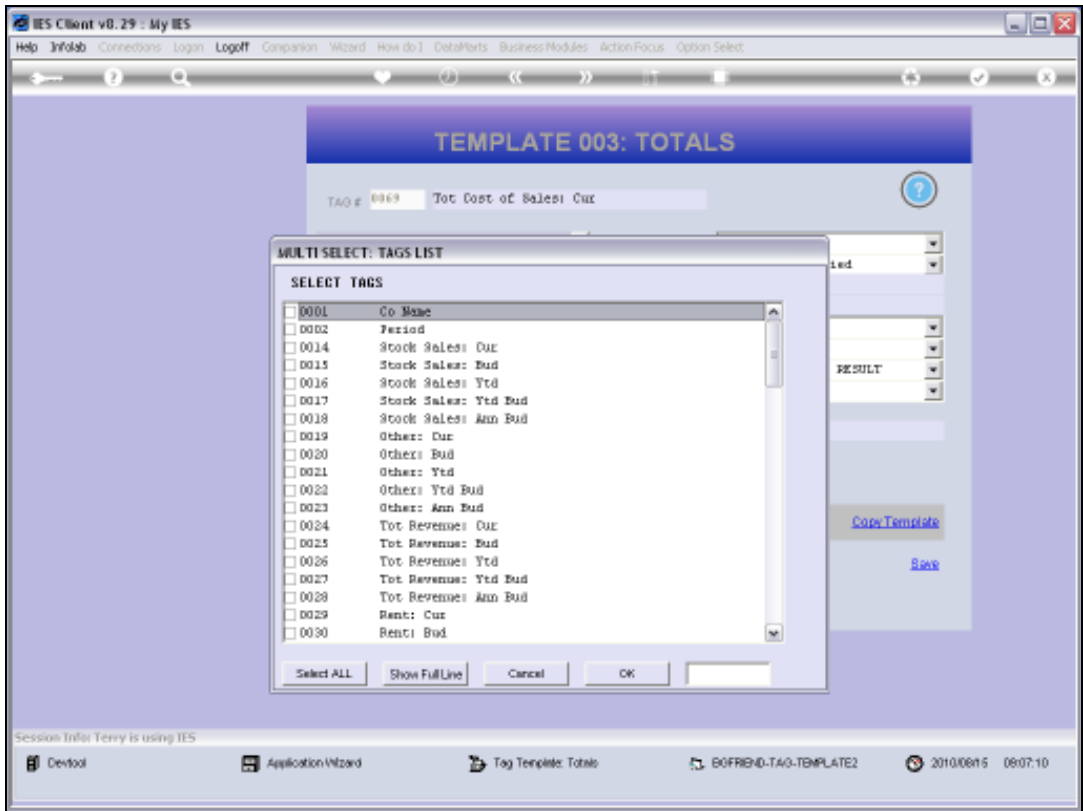


Slide 14

Slide notes: Now we will copy this Template to Tag 70.

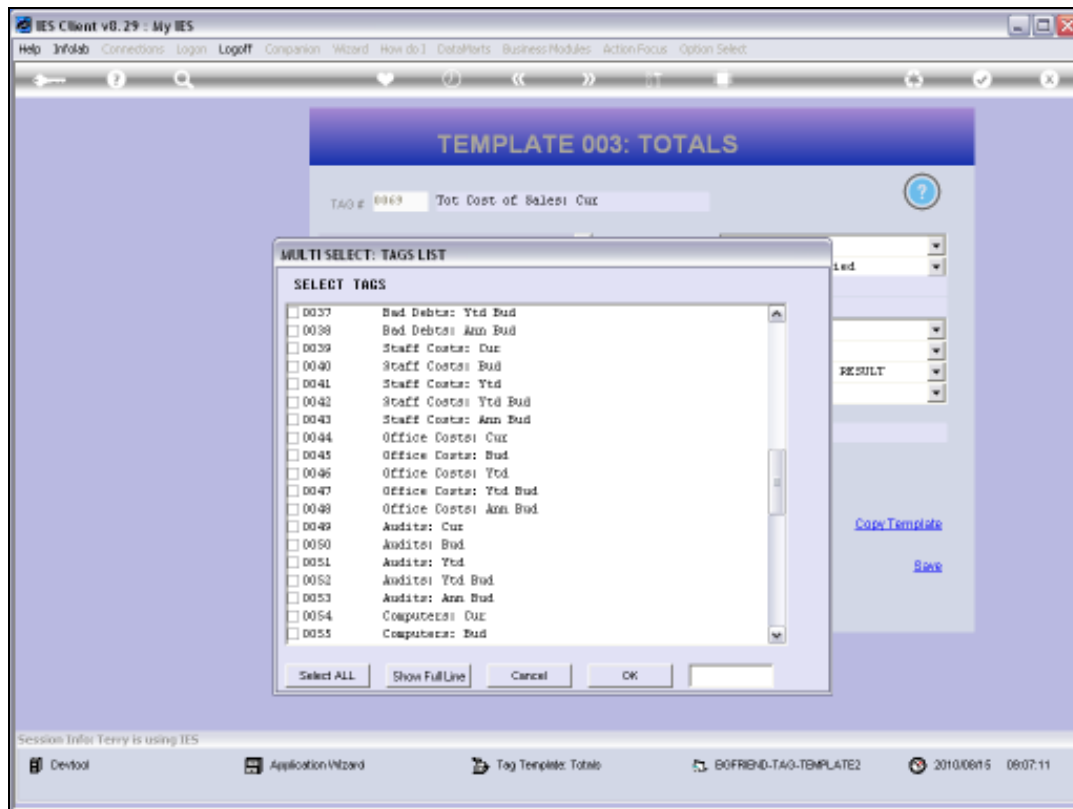


Slide 15  
Slide notes:



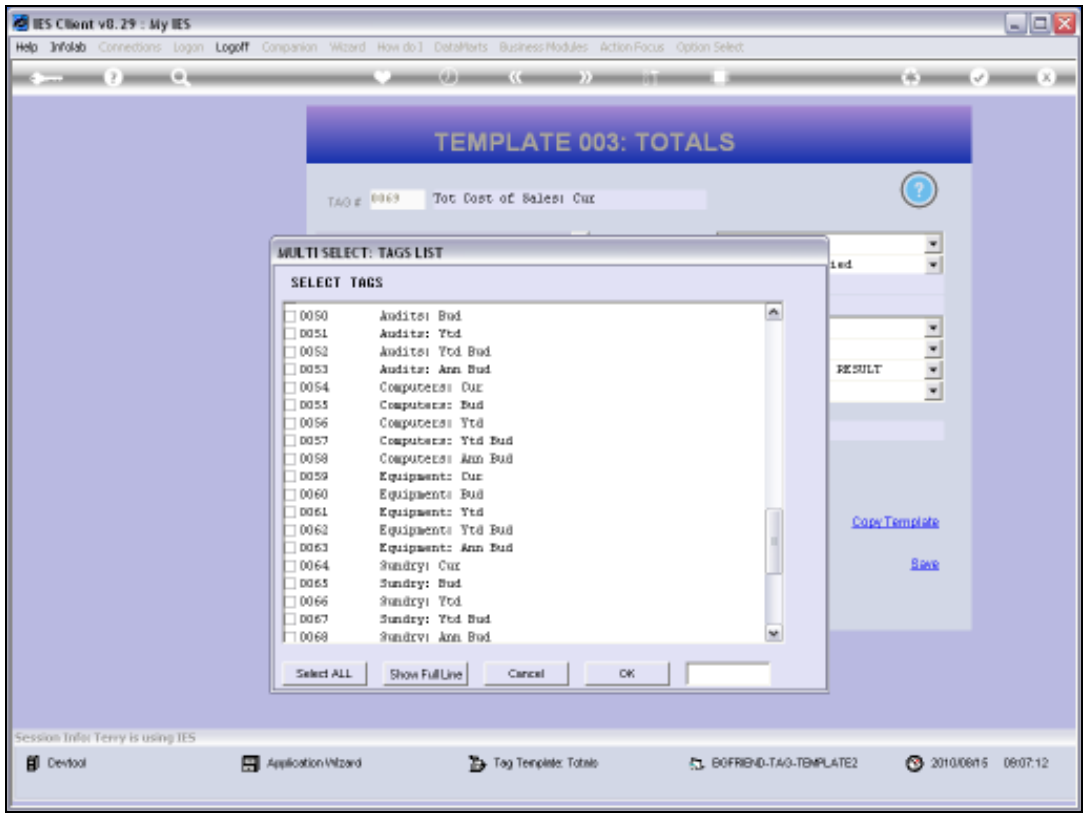
Slide 16  
Slide notes:



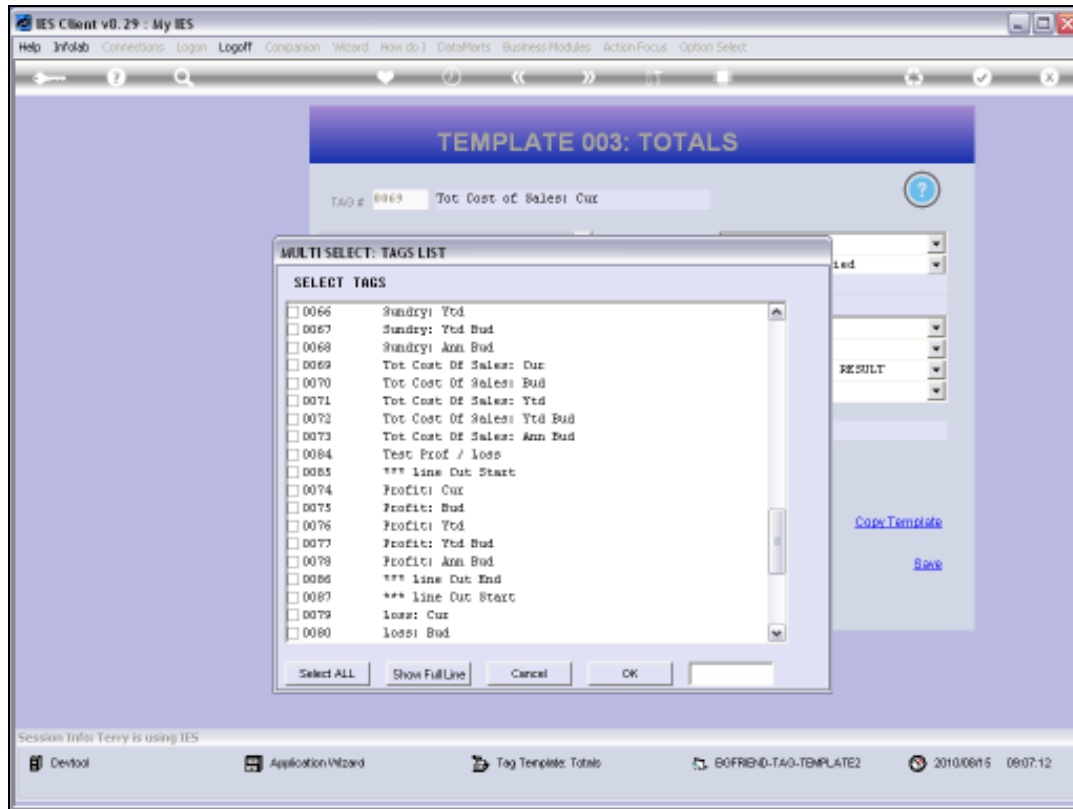


Slide 17

Slide notes:

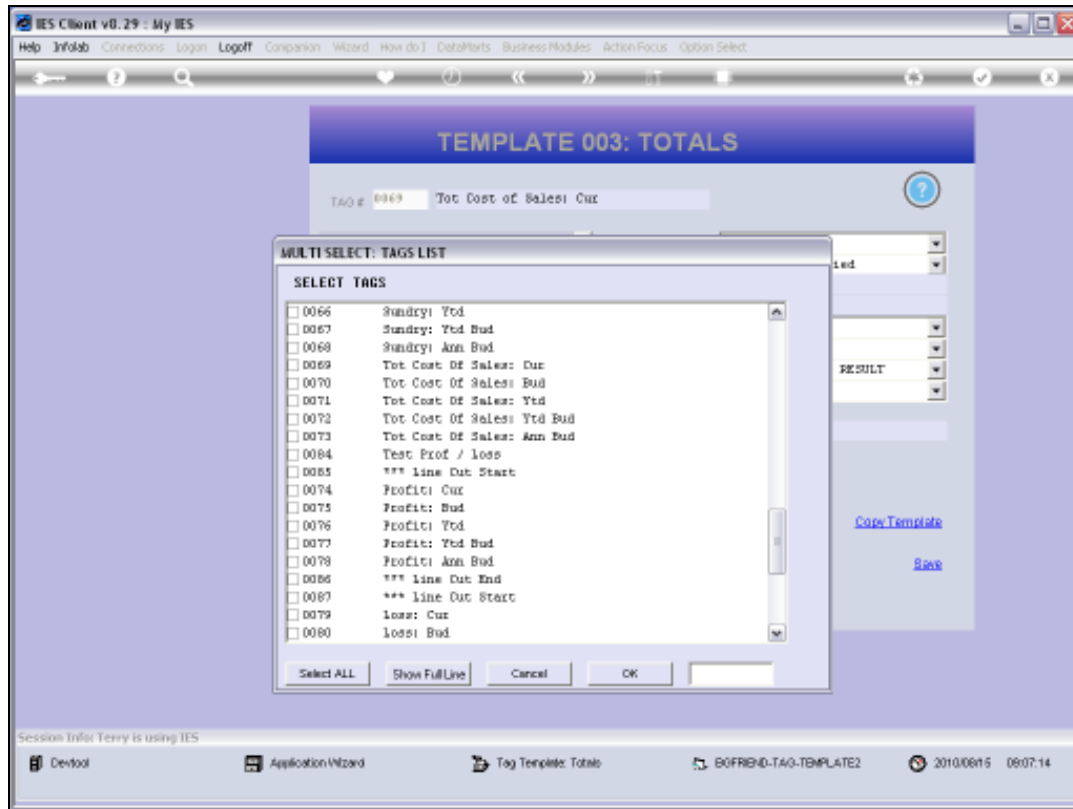


Slide 18  
Slide notes:



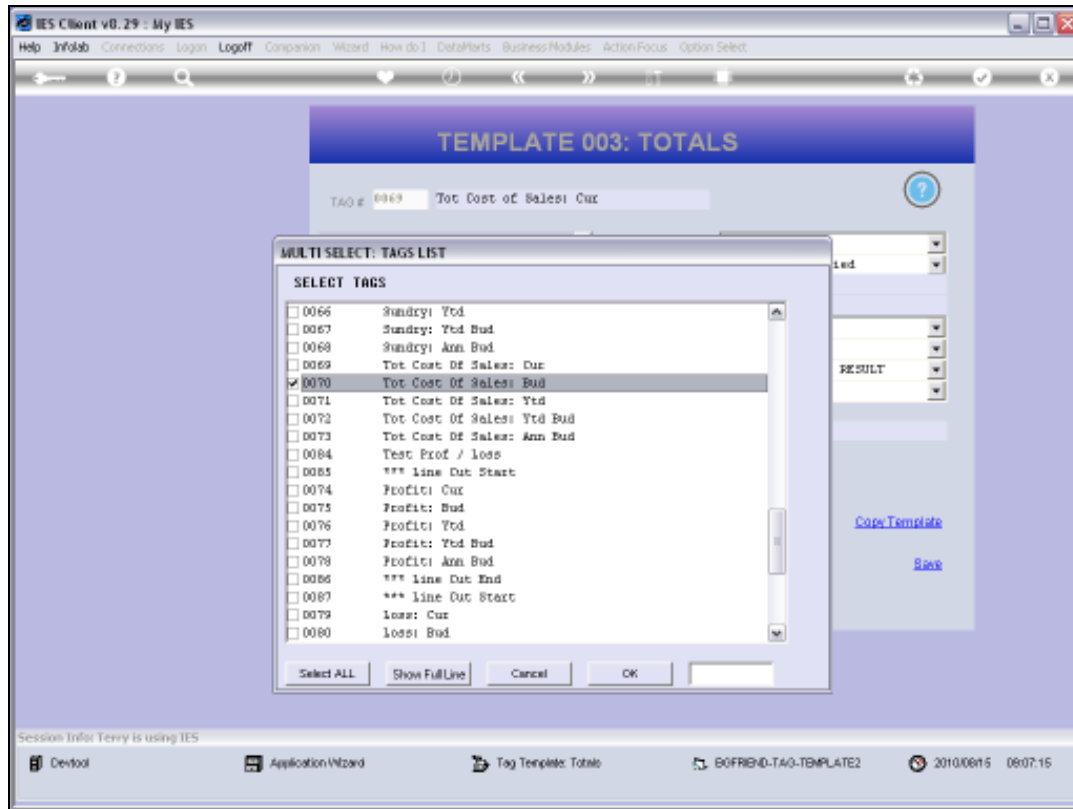
Slide 19

Slide notes:



Slide 20

Slide notes:



Slide 21

Slide notes:

IES Client v8.29 : My IES

Help Submit Quit Functions Commands

← ? 🔍 ⏪ ⏩ ⏴ ⏵ ⏶ ⏷ ⏸ ⏹ ⏺ ⏻ ⏼ ⏽ ⏾ ⏿

### TEMPLATE 003: TOTALS

TAG # 0069 Tot Cost of Sales Cur ?

Tags to ADD (+)	
1	0029
2	0034
3	0039
4	0044
5	0049
6	0054
7	0059
= none	

Select

Tags to Subtract (-)	
1	
2	
3	
4	
5	
6	
7	

Select

Tag Addressing: absolute

Alignment: c: right justified

Result Width: 2L

Display Mode: MP02, I

Bold?: NORMAL

Underline?: NORMAL

Tag Result: ALWAYS RETURN A RESULT

Test Operator: =

Conditional Value:

[Remove Template](#) [Copy Template](#)

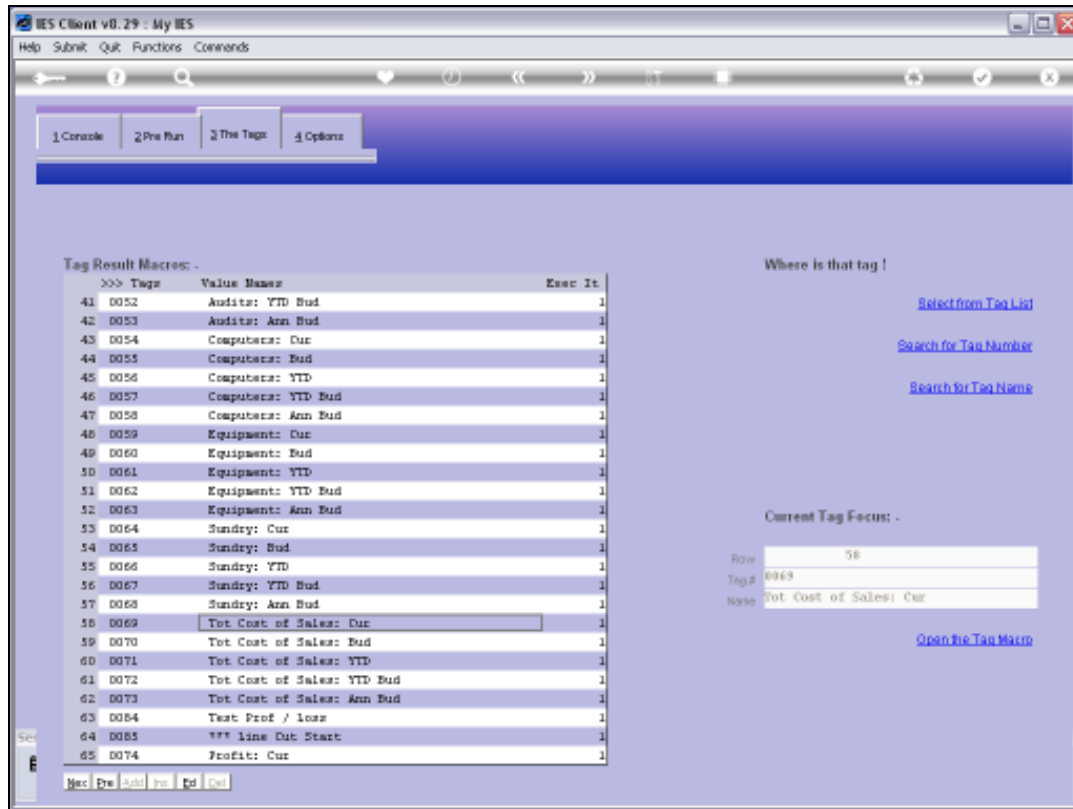
[Reveal Logic](#) [Save](#)

Session Info: Terry is using IES

Desktop Application Wizard Tag Template: Totals BOFRIND-TAG-TEMPLATE2 2010/09/15 09:07:17

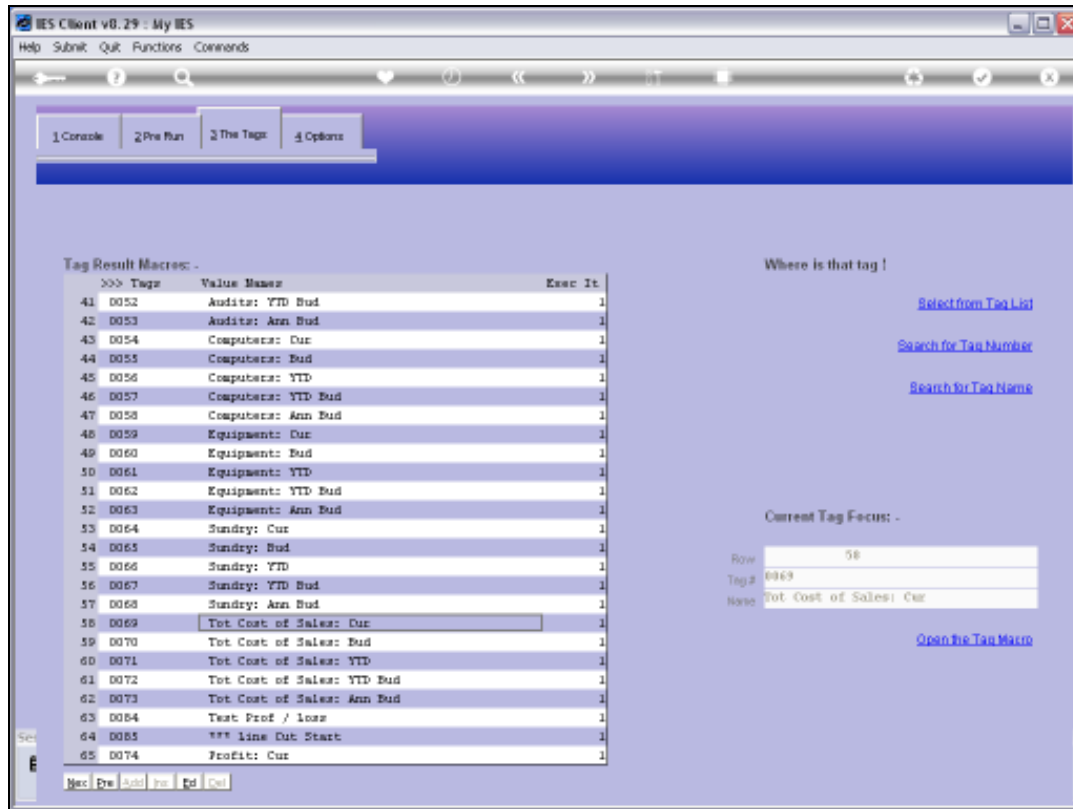
Slide 22

Slide notes:



Slide 23

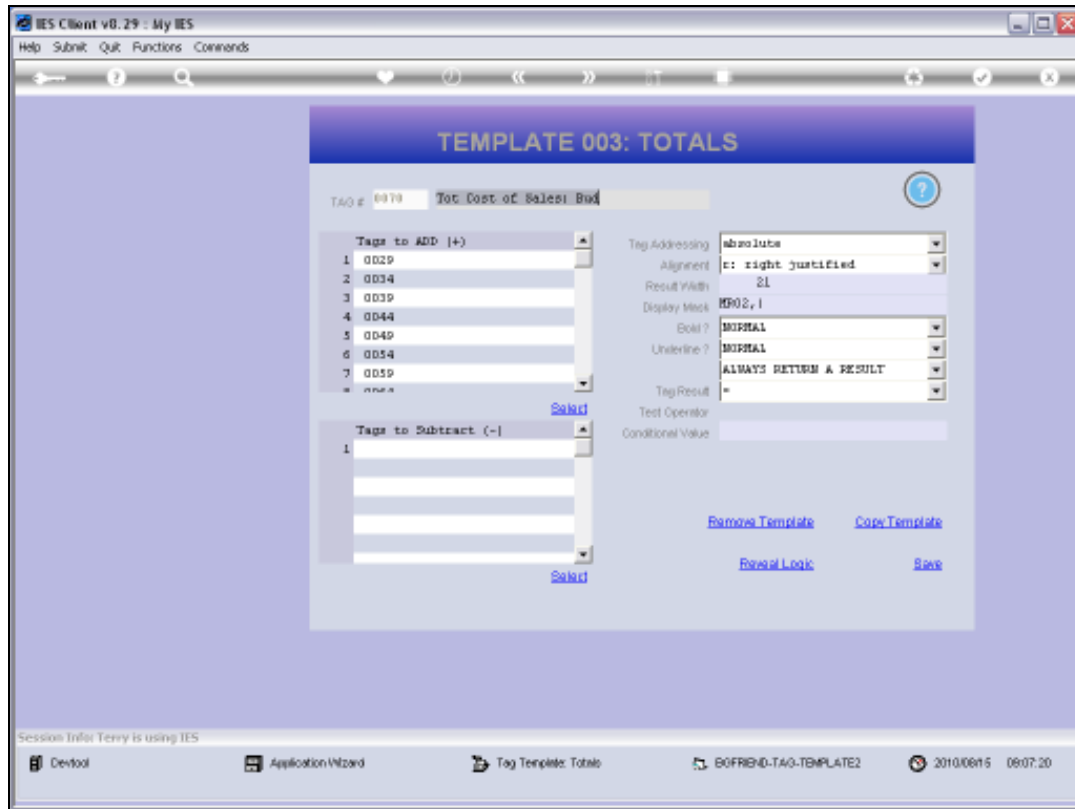
Slide notes: Let's go and look at Tag 70 now to see what has been copied.



Slide 24

Slide notes:





Slide 25

Slide notes: Tag 70 is using the exact same Tag numbers in it's total as Tag 69. We can of course re-select the correct Tags, because these are the wrong ones. Let's have a look again at our Document Layout.

IES Client v8.29 : My IES

Help Submit Quit Functions Commands

← ? 🔍 ⏪ ⏩ ⏴ ⏵ ⏶ ⏷ ⏸ ⏹ ⏺ ⏻ ⏼ ⏽ ⏾ ⏿

### TEMPLATE 003: TOTALS

TAG # 0079 TAG Description Tot Cost of Sales Bud

Tags to ADD (+)

1	0029
2	0034
3	0039
4	0044
5	0049
6	0054
7	0059
= MAX	

Select

Tags to Subtract (-)

1	

Select

Tag Addressing absolute

Alignment c: right justified

Result Width 21

Display Mode RPO2, I

Bold? NORMAL

Underline? NORMAL

Tag Result ALWAYS RETURN A RESULT

Test Operator =

Conditional Value

[Remove Template](#) [Copy Template](#)

[Reveal Logic](#) [Save](#)

Session Info: Terry is using IES

Devtool Application Wizard Tag Template: Totals BOFRIND-TAG-TEMPLATE2 2010/09/15 09:07:21

Slide 26

Slide notes:

IES Client v8.29 : My IES

Help Submit Quit Functions Commands

TEMPLATE 003: TOTALS

TAG # 0078 Tot Cost of Sales Bud

Tags to ADD (+)

1	0029
2	0034
3	0039
4	0044
5	0049
6	0054
7	0059

Tags to Subtract (-)

1	1
---	---

Tag Addressing: absolute

Alignment: right justified

Result Width: 2L

Display Mode: RPO2, I

Bold?: NORMAL

Underline?: NORMAL

Tag Result: ALWAYS RETURN A RESULT

Test Operator: =

Conditional Value:

Remove Template Copy Template

Reveal Logic Save

Session Info: Terry is using IES

Devtool Application Wizard Tag Template: Totals BOFRIND-TAG-TEMPLATE2 2010/09/15 09:07:23

Slide 27

Slide notes:

	Actual Current	Budget	Actual YTD	Budget YTD	Annual Budget
<b>[0001] Profit and Loss (Income Statement) for [0001]</b>					
Revenue					
Stock Sales	[0014]	[0015]	[0016]	[0017]	[0018]
Other	[0019]	[0020]	[0021]	[0022]	[0023]
Total Revenue	[0024]	[0025]	[0026]	[0027]	[0028]
Costs					
Rent and Utilities	[0029]	[0030]	[0031]	[0032]	[0033]
Bad Debts	[0034]	[0035]	[0036]	[0037]	[0038]
Staff Costs	[0039]	[0040]	[0041]	[0042]	[0043]
Office Costs	[0044]	[0045]	[0046]	[0047]	[0048]
Audit Fees	[0049]	[0050]	[0051]	[0052]	[0053]
Computer Systems	[0054]	[0055]	[0056]	[0057]	[0058]
Equipment Maintenance	[0059]	[0060]	[0061]	[0062]	[0063]
Sundry Expenses	[0064]	[0065]	[0066]	[0067]	[0068]
Total Cost of Sales	[0069]	[0070]	[0071]	[0072]	[0073]
[0084]					
[0085] Gross Profit	[0074]	[0075]	[0076]	[0077]	[0078]
[0087] Gross Loss	[0079]	[0080]	[0081]	[0082]	[0083]
[0097] [0091] [0092] [0093] [0094] [0095] [0096] [0098]					

Slide 28

Slide notes: Tag 70 has inherited the same Tags to total as Tag 69.

[0001] Profit and Loss (Income Statement) for [0001]					
	Actual Current	Budget	Actual YTD	Budget YTD	Annual Budget
Revenue					
Stock Sales	[0014]	[0015]	[0016]	[0017]	[0018]
Other	[0019]	[0020]	[0021]	[0022]	[0023]
Total Revenue	[0024]	[0025]	[0026]	[0027]	[0028]
Costs					
Rent and Utilities	[0029]	[0030]	[0031]	[0032]	[0033]
Bad Debts	[0034]	[0035]	[0036]	[0037]	[0038]
Staff Costs	[0039]	[0040]	[0041]	[0042]	[0043]
Office Costs	[0044]	[0045]	[0046]	[0047]	[0048]
Audit Fees	[0049]	[0050]	[0051]	[0052]	[0053]
Computer Systems	[0054]	[0055]	[0056]	[0057]	[0058]
Equipment Maintenance	[0059]	[0060]	[0061]	[0062]	[0063]
Sundry Expenses	[0064]	[0065]	[0066]	[0067]	[0068]
Total Cost of Sales	[0069]	[0070]	[0071]	[0072]	[0073]
[0084]					
[0085] Gross Profit	[0074]	[0075]	[0076]	[0077]	[0078]
[0087] Gross Loss	[0079]	[0080]	[0081]	[0082]	[0083]
[0097] [0091] [0092] [0093] [0094] [0095] [0096] [0098]					

Slide 29

Slide notes:

[0001] Profit and Loss (Income Statement) for [0001]					
	Actual Current	Budget	Actual YTD	Budget YTD	Annual Budget
Revenue					
Stock Sales	[0014]	[0015]	[0016]	[0017]	[0018]
Other	[0019]	[0020]	[0021]	[0022]	[0023]
Total Revenue	[0024]	[0025]	[0026]	[0027]	[0028]
Costs					
Rent and Utilities	[0029]	[0030]	[0031]	[0032]	[0033]
Bad Debts	[0034]	[0035]	[0036]	[0037]	[0038]
Staff Costs	[0039]	[0040]	[0041]	[0042]	[0043]
Office Costs	[0044]	[0045]	[0046]	[0047]	[0048]
Audit Fees	[0049]	[0050]	[0051]	[0052]	[0053]
Computer Systems	[0054]	[0055]	[0056]	[0057]	[0058]
Equipment Maintenance	[0059]	[0060]	[0061]	[0062]	[0063]
Sundry Expenses	[0064]	[0065]	[0066]	[0067]	[0068]
Total Cost of Sales	[0069]	[0070]	[0071]	[0072]	[0073]
[0084]					
[0085] Gross Profit	[0074]	[0075]	[0076]	[0077]	[0078]
[0087] Gross Loss	[0079]	[0080]	[0081]	[0082]	[0083]
[0097] [0091] [0092] [0093] [0094] [0095] [0096] [0098]					

Slide 30

Slide notes:

Profit and Loss (Income Statement) for 2007					
	Actual Current	Budget	Actual YTD	Budget YTD	Annual Budget
Revenue					
Stock Sales	[0014]	[0015]	[0016]	[0017]	[0018]
Other	[0019]	[0020]	[0021]	[0022]	[0023]
Total Revenue	[0024]	[0025]	[0026]	[0027]	[0028]
Costs					
Rent and Utilities	[0029]	[0030]	[0031]	[0032]	[0033]
Bad Debts	[0034]	[0035]	[0036]	[0037]	[0038]
Staff Costs	[0039]	[0040]	[0041]	[0042]	[0043]
Office Costs	[0044]	[0045]	[0046]	[0047]	[0048]
Audit Fees	[0049]	[0050]	[0051]	[0052]	[0053]
Computer Systems	[0054]	[0055]	[0056]	[0057]	[0058]
Equipment Maintenance	[0059]	[0060]	[0061]	[0062]	[0063]
Sundry Expenses	[0064]	[0065]	[0066]	[0067]	[0068]
Total Cost of Sales	[0069]	[0070]	[0071]	[0072]	[0073]
[0084]					
[0085]Gross Profit	[0074]	[0075]	[0076]	[0077]	[0078]
[0087]Gross Loss	[0079]	[0080]	[0081]	[0082]	[0083]
[0097] [0091] [0092] [0093] [0094] [0095] [0096] [0098]					

Slide 31

Slide notes: Instead of it's own list. It's not the Copy function's fault though, especially because the Tag Addressing was set to 'Absolute'.

File Edit View Favorites Tools Help

Google Search Share Send Check Translate AutoFill Sign

Free Hotmail Suggested Sites Web Site Safety

[[127.0.0.1]bridge)(1195833876.htm

[[0001]]

Profit and Loss (Income Statement) for [[0001]]

	Actual Current	Budget	Actual YTD	Budget YTD	Annual Budget
Revenue					
Stock Sales	[[0014]]	[[0015]]	[[0016]]	[[0017]]	[[0018]]
Other	[[0019]]	[[0020]]	[[0021]]	[[0022]]	[[0023]]
Total Revenue	[[0024]]	[[0025]]	[[0026]]	[[0027]]	[[0028]]
Costs					
Rent and Utilities	[[0029]]	[[0030]]	[[0031]]	[[0032]]	[[0033]]
Bad Debts	[[0034]]	[[0035]]	[[0036]]	[[0037]]	[[0038]]
Staff Costs	[[0039]]	[[0040]]	[[0041]]	[[0042]]	[[0043]]
Office Costs	[[0044]]	[[0045]]	[[0046]]	[[0047]]	[[0048]]
Audit Fees	[[0049]]	[[0050]]	[[0051]]	[[0052]]	[[0053]]
Computer Systems	[[0054]]	[[0055]]	[[0056]]	[[0057]]	[[0058]]
Equipment Maintenance	[[0059]]	[[0060]]	[[0061]]	[[0062]]	[[0063]]
Sundry Expenses	[[0064]]	[[0065]]	[[0066]]	[[0067]]	[[0068]]
Total Cost of Sales	[[0069]]	[[0070]]	[[0071]]	[[0072]]	[[0073]]
[[0084]]					
[[0085]]Gross Profit	[[0074]]	[[0075]]	[[0076]]	[[0077]]	[[0078]]
[[0087]]Gross Loss	[[0079]]	[[0080]]	[[0081]]	[[0082]]	[[0083]]
[[0097]] [[0091]] [[0092]] [[0093]] [[0094]] [[0095]] [[0096]] [[0098]]					

Slide 32

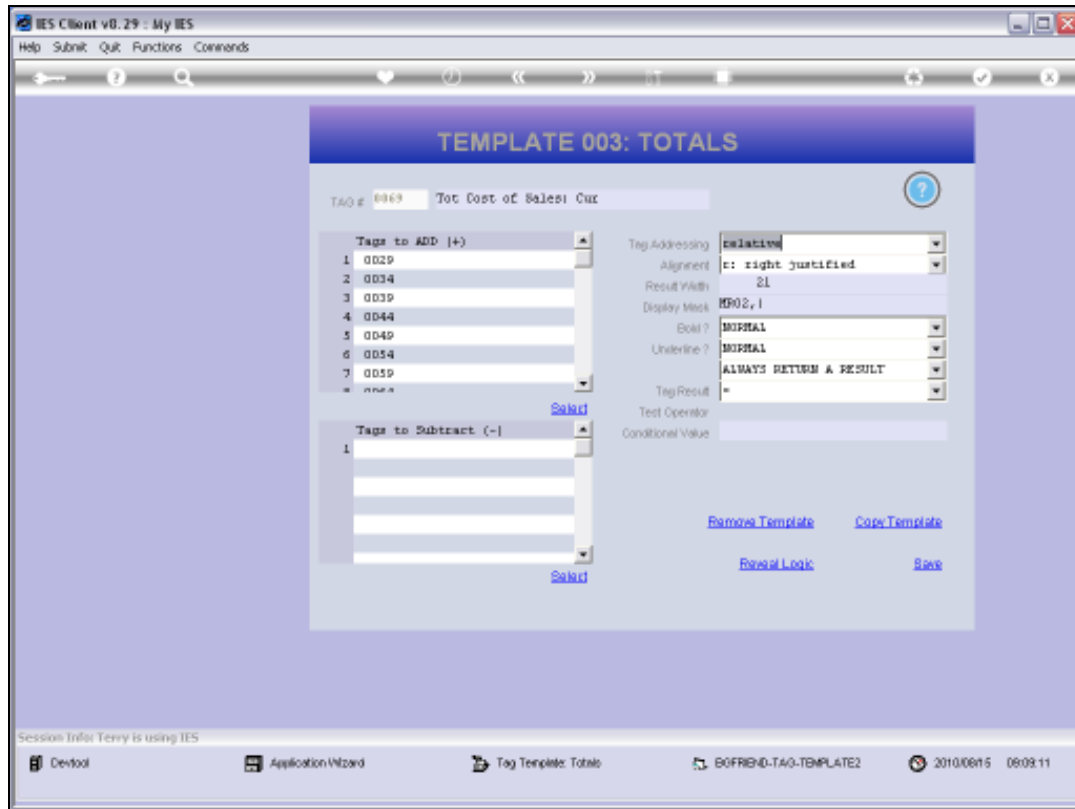
Slide notes:



[0001] Profit and Loss (Income Statement) for [0001]					
	Actual Current	Budget	Actual YTD	Budget YTD	Annual Budget
Revenue					
Stock Sales	[0014]	[0015]	[0016]	[0017]	[0018]
Other	[0019]	[0020]	[0021]	[0022]	[0023]
Total Revenue	[0024]	[0025]	[0026]	[0027]	[0028]
Costs					
Rent and Utilities	[0029]	[0030]	[0031]	[0032]	[0033]
Bad Debts	[0034]	[0035]	[0036]	[0037]	[0038]
Staff Costs	[0039]	[0040]	[0041]	[0042]	[0043]
Office Costs	[0044]	[0045]	[0046]	[0047]	[0048]
Audit Fees	[0049]	[0050]	[0051]	[0052]	[0053]
Computer Systems	[0054]	[0055]	[0056]	[0057]	[0058]
Equipment Maintenance	[0059]	[0060]	[0061]	[0062]	[0063]
Sundry Expenses	[0064]	[0065]	[0066]	[0067]	[0068]
Total Cost of Sales	[0069]	[0070]	[0071]	[0072]	[0073]
[0084]					
[0085] Gross Profit	[0074]	[0075]	[0076]	[0077]	[0078]
[0087] Gross Loss	[0079]	[0080]	[0081]	[0082]	[0083]
[0097] [0091] [0092] [0093] [0094] [0095] [0096] [0098]					

Slide 33

Slide notes:



Slide 34

Slide notes: However, if we set the Tag Addressing as 'Relative' then the Copy function has permission to figure out how to adjust the Tag references while copying.

IES Client v8.29 : My IES

Help Submit Quit Functions Commands

← ? 🔍 ⏪ ⏩ ⏴ ⏵ ⏶ ⏷ ⏸ ⏹ ⏺ ⏻ ⏼ ⏽ ⏾ ⏿

### TEMPLATE 003: TOTALS

TAG # 0069 Tot Cost of Sales Cur ?

Tags to ADD (+)	
1	0029
2	0034
3	0039
4	0044
5	0049
6	0054
7	0059
= MAX	

Select

Tags to Subtract (-)	
1	
2	
3	
4	
5	
6	
7	

Select

Tag Addressing: cumulative

Alignment: r: right justified

Result Width: 21

Display Mode: MP02, I

Bold?: INITIAL

Underline?: INITIAL

Tag Result: ALWAYS RETURN A RESULT

Test Operator: =

Conditional Value:

[Remove Template](#) [Copy Template](#)

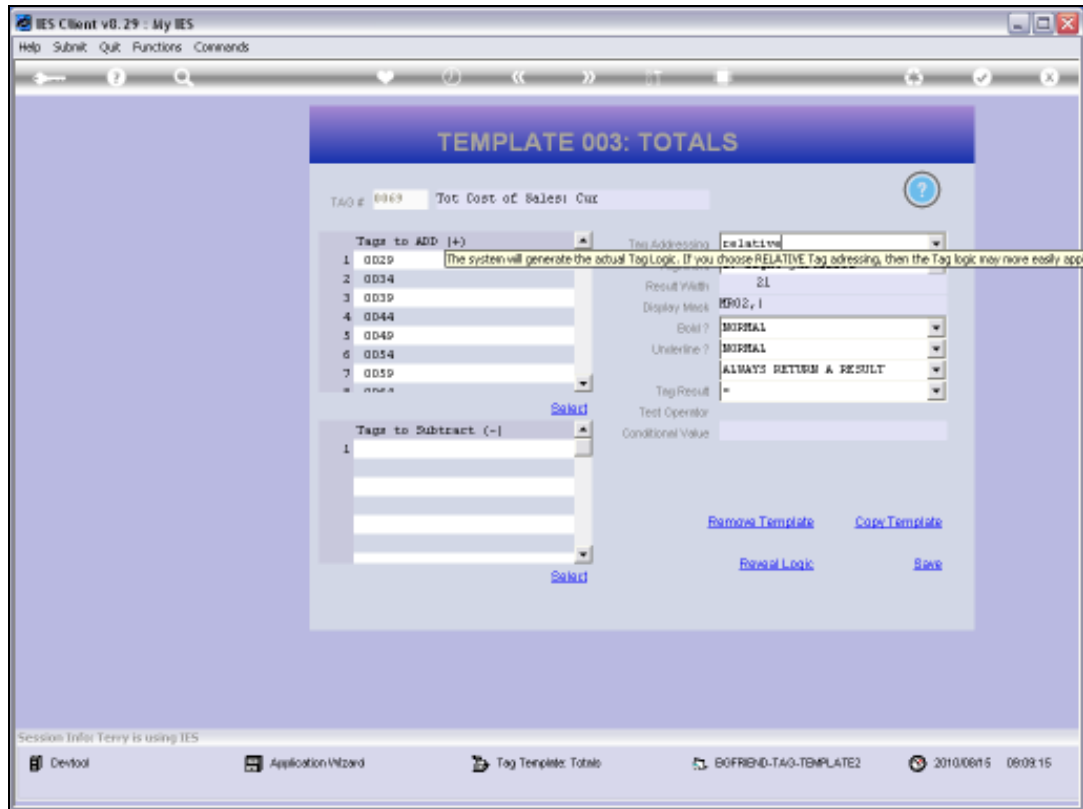
[Reveal Logic](#) [Save](#)

Session Info: Terry is using IES

Desktop Application Wizard Tag Template Totals BOFRIND-TAG-TEMPLATE2 2010/09/15 09:09:14

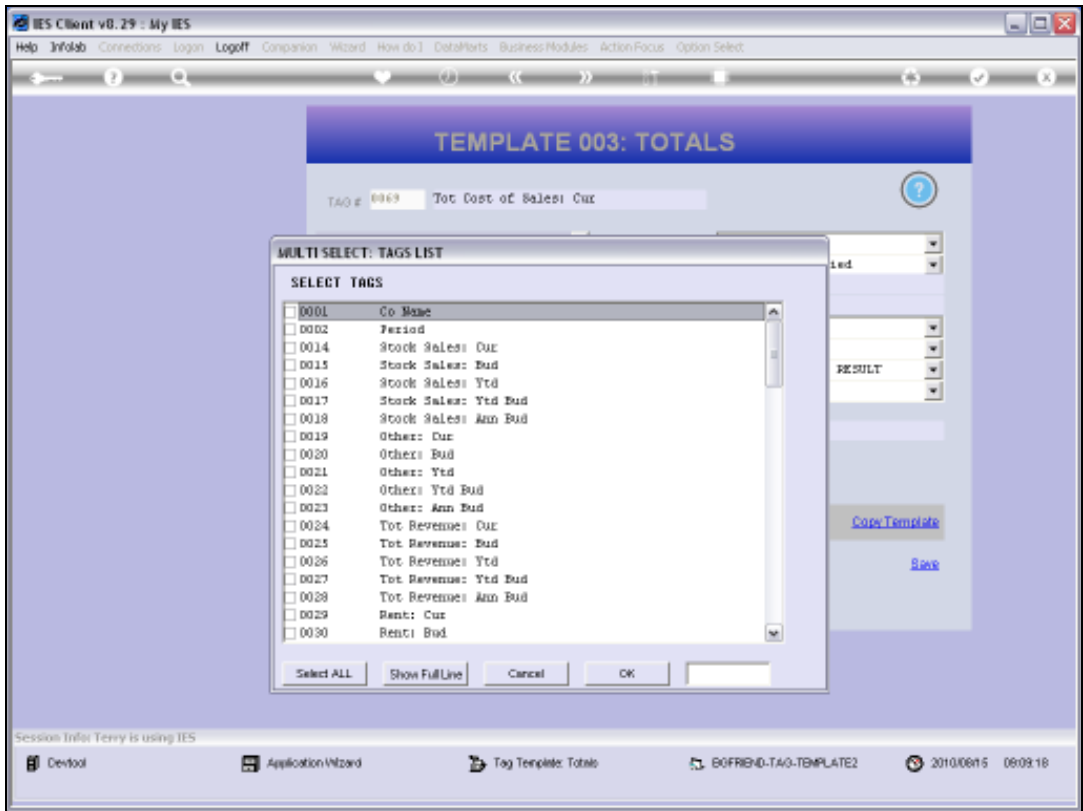
Slide 35

Slide notes:

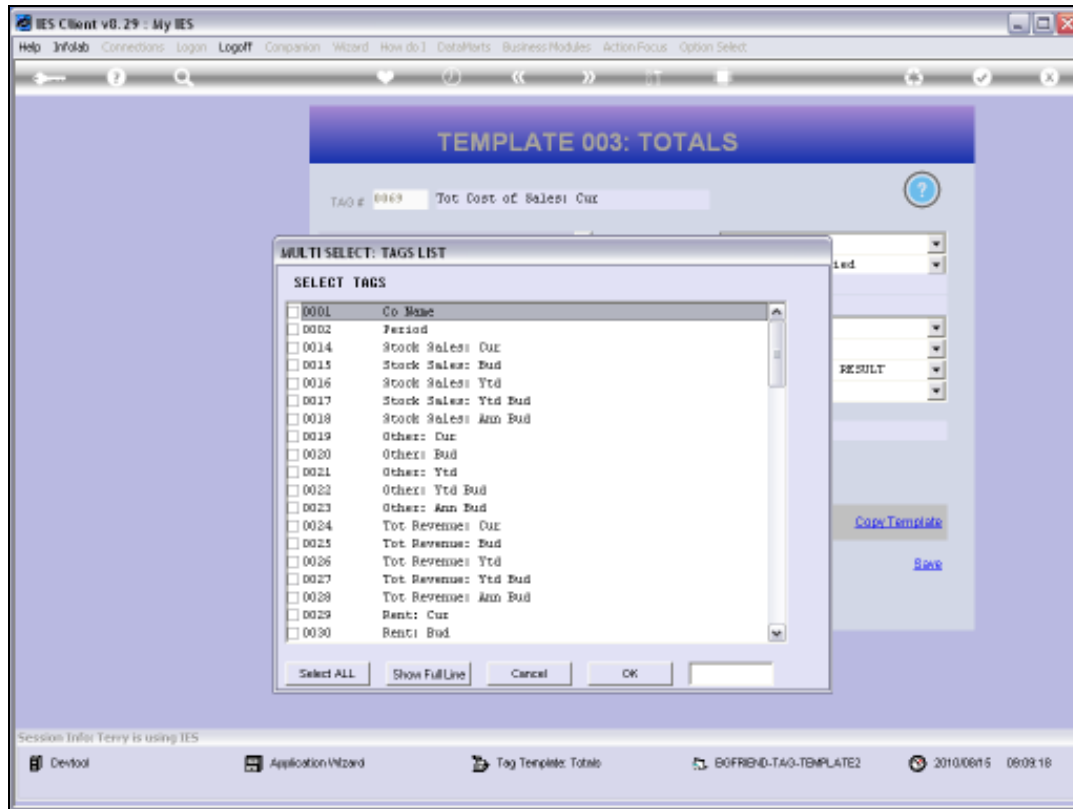


Slide 36

Slide notes:

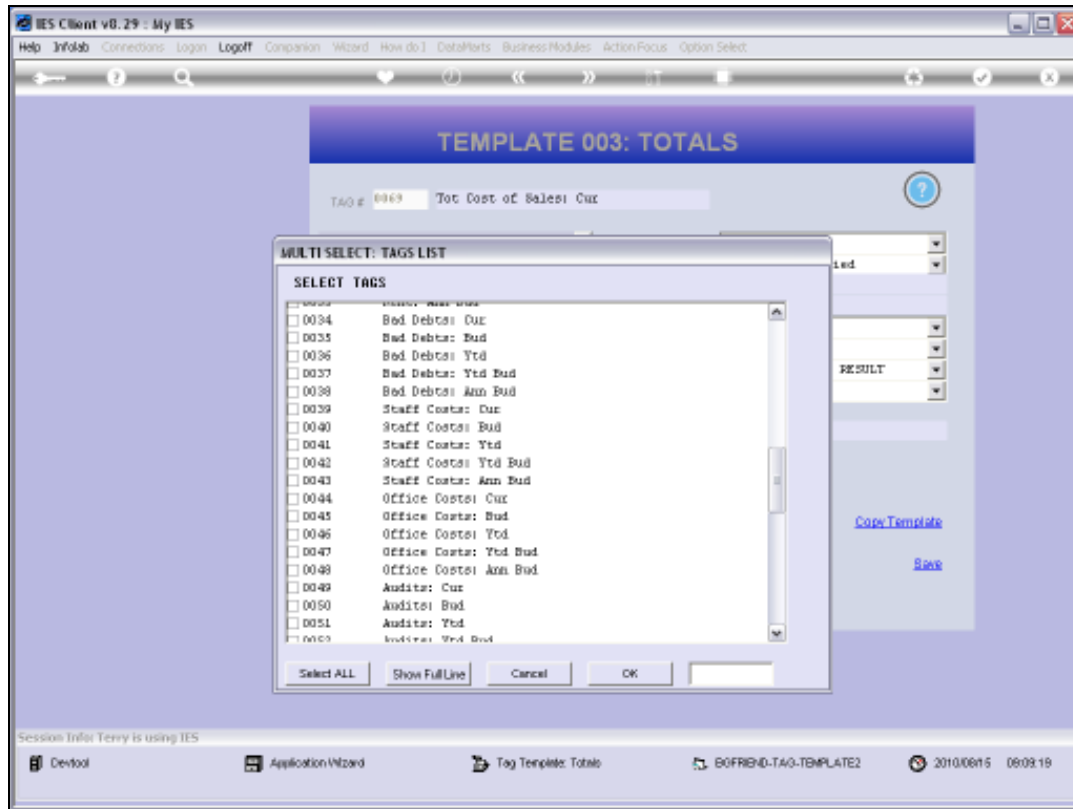


Slide 37  
Slide notes:



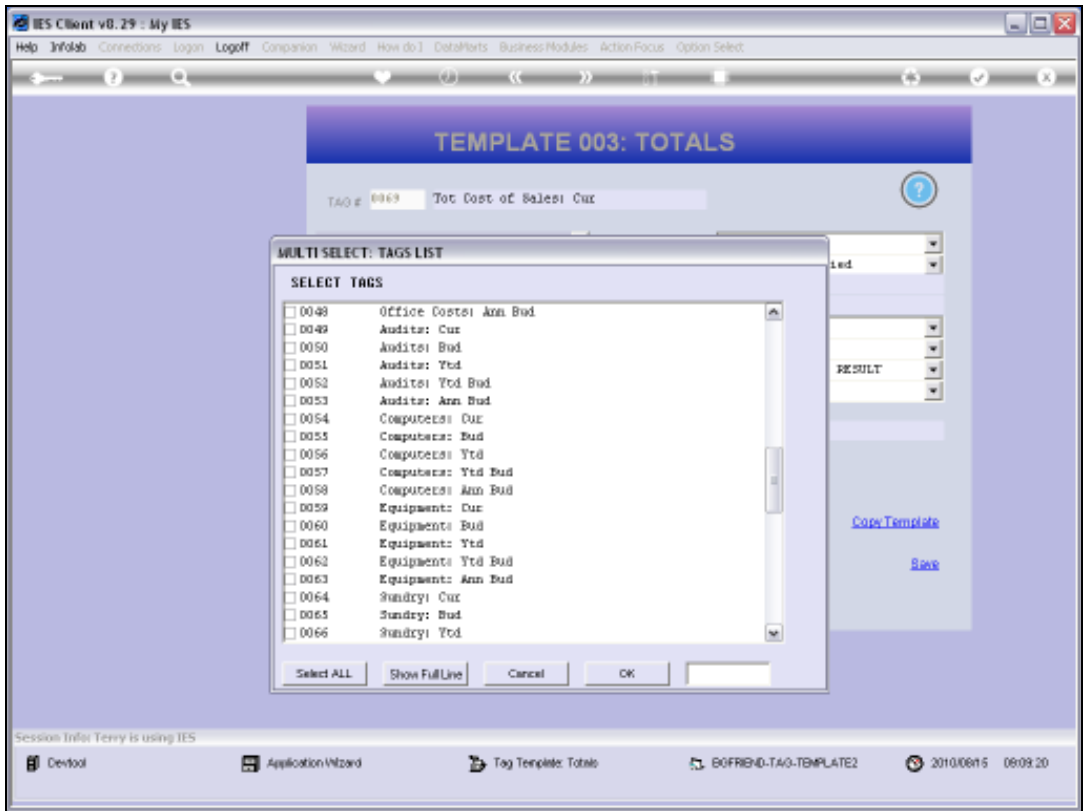
Slide 38

Slide notes:



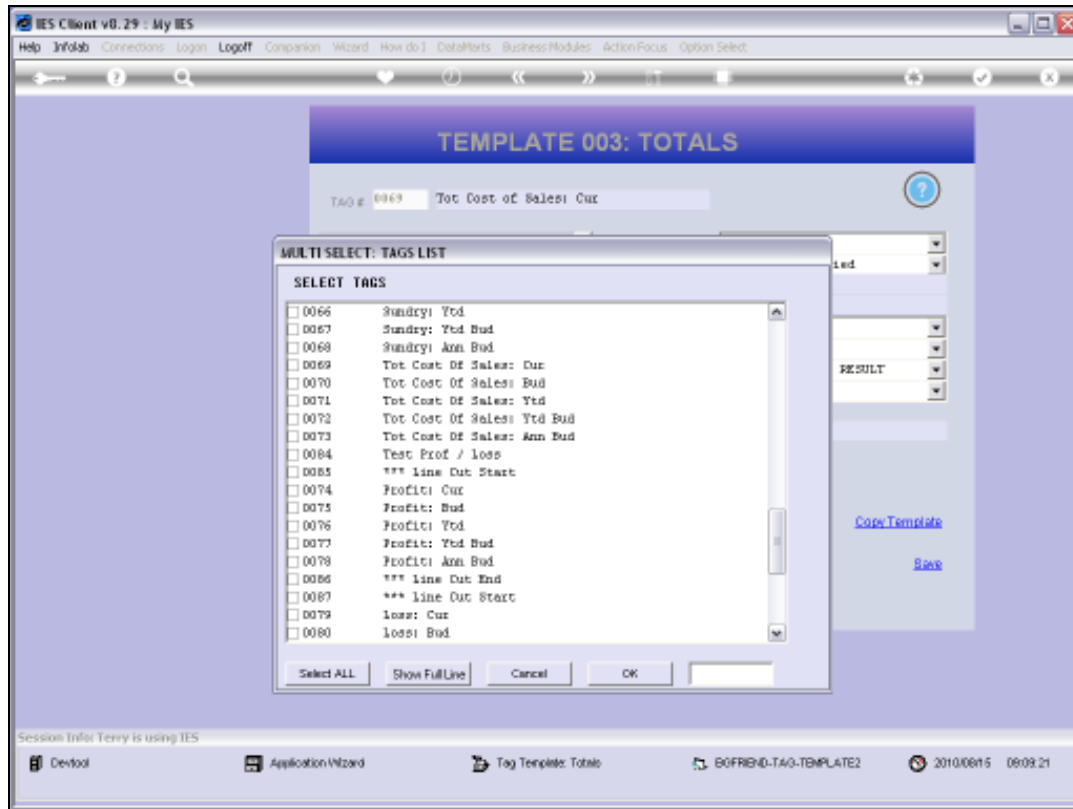
Slide 39

Slide notes:



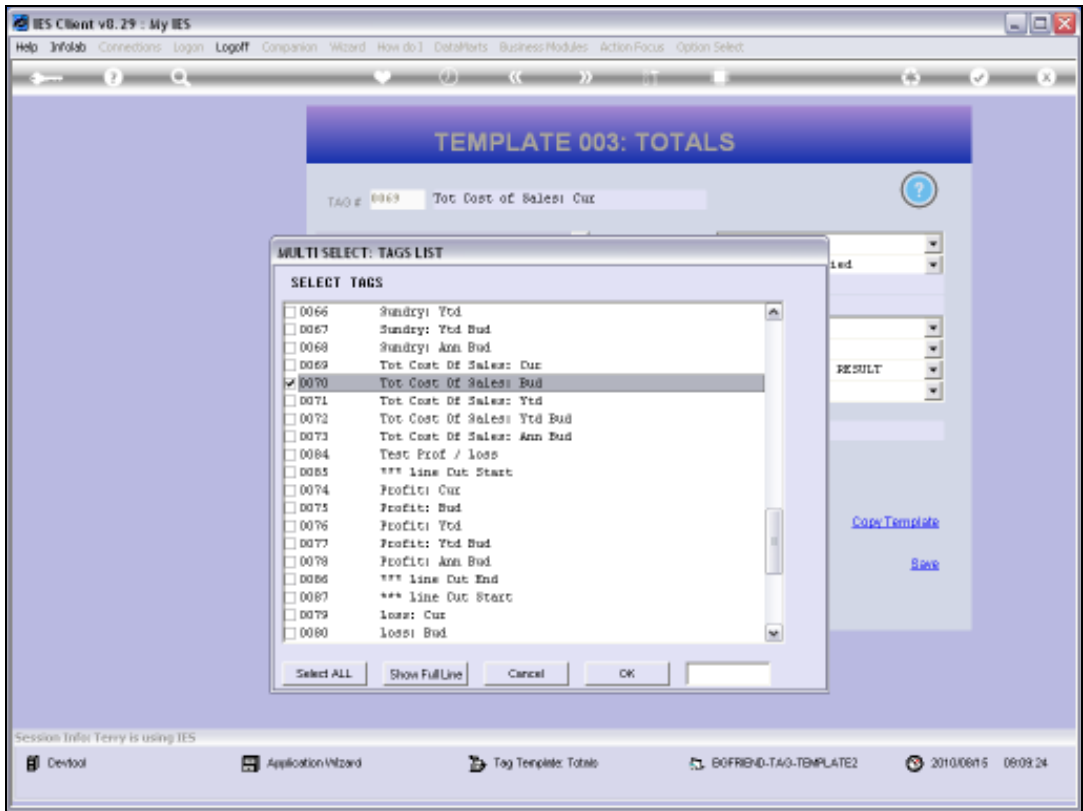
Slide 40  
Slide notes:



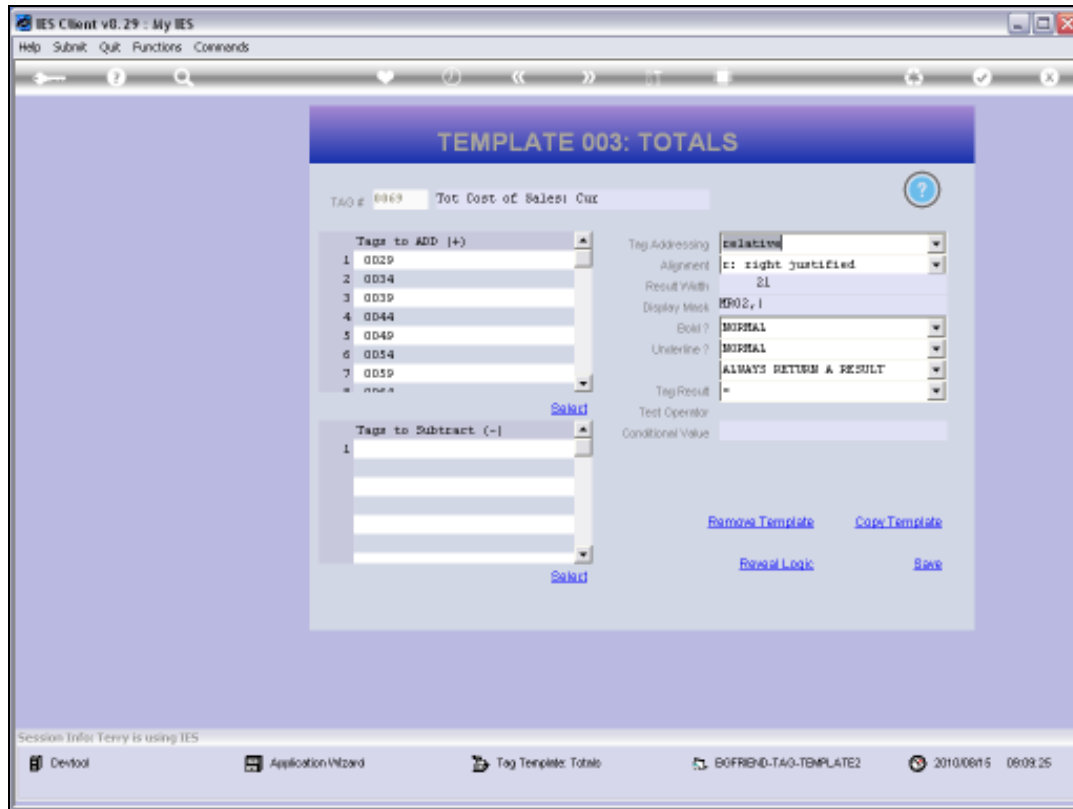


Slide 41

Slide notes:

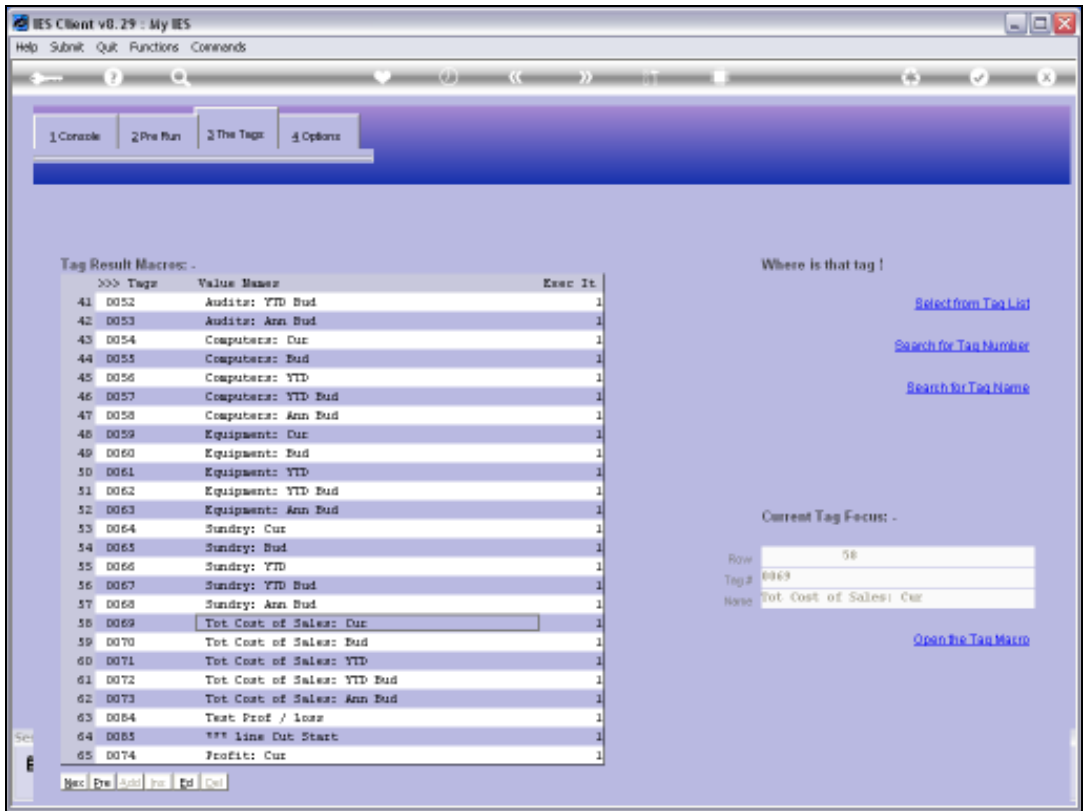


Slide 42  
Slide notes:

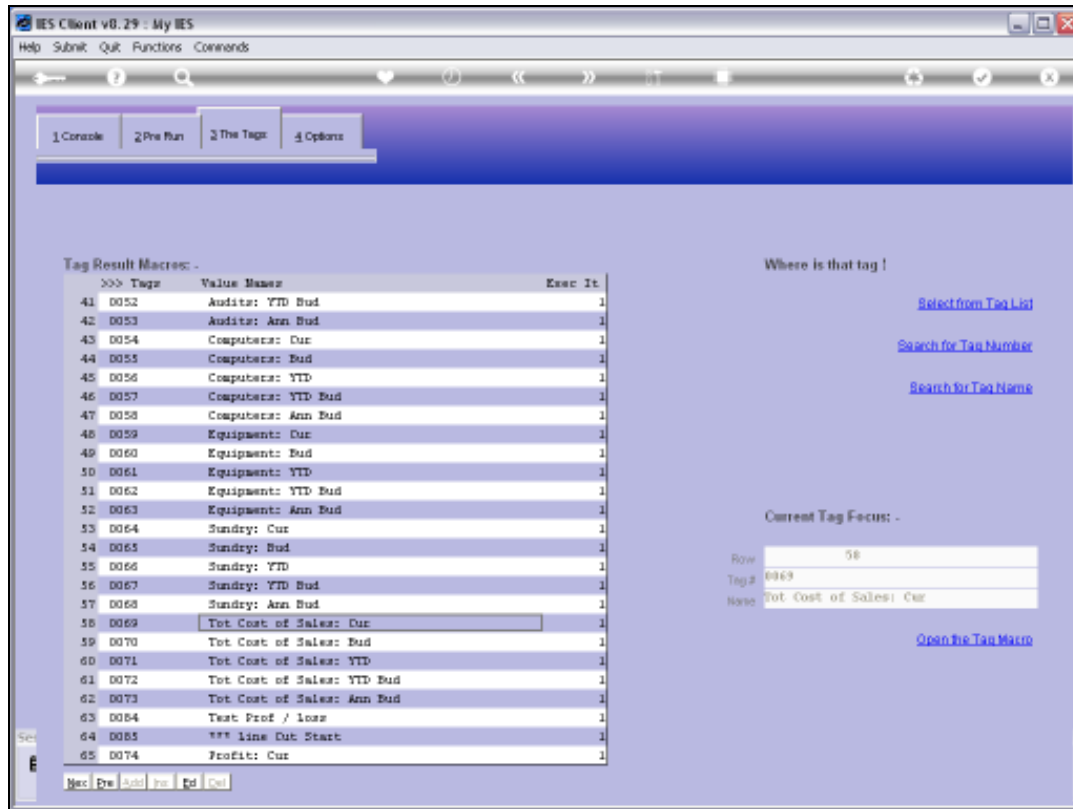


Slide 43

Slide notes:

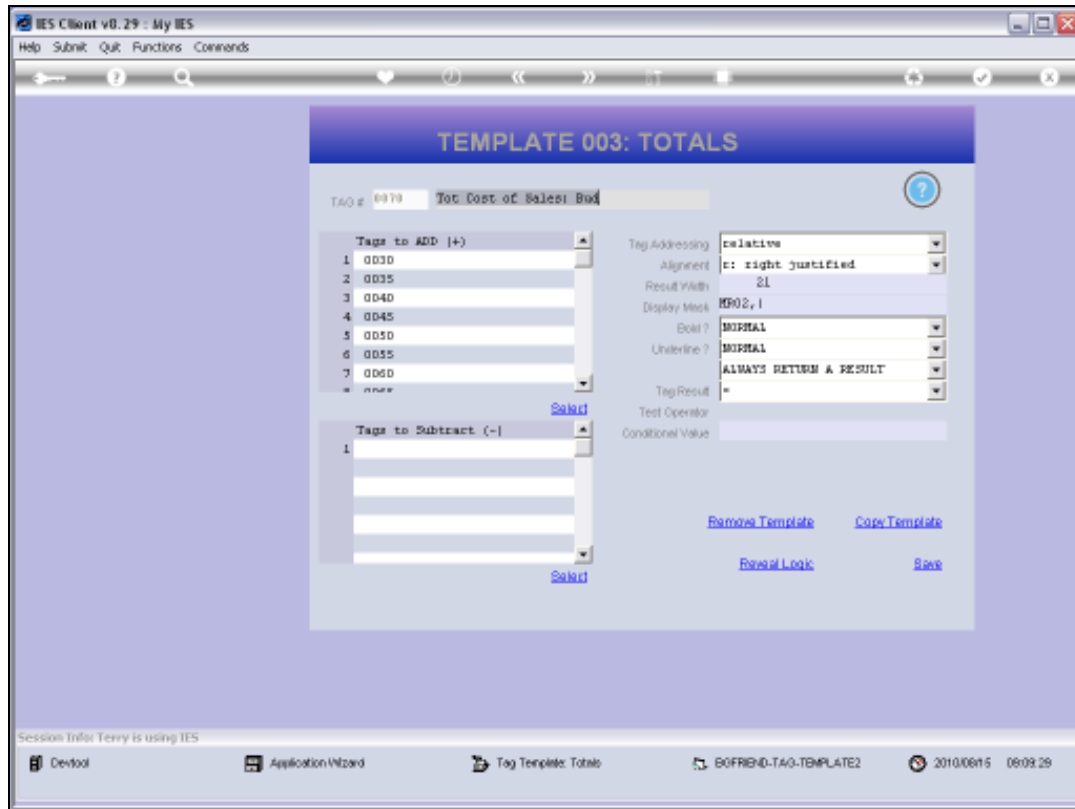


Slide 44  
Slide notes:



Slide 45

Slide notes:



## Slide 46

Slide notes: So this time, when we look at Tag 70, it was copied from Tag 69 BUT it actually has the correct list of Tags to total already. And it's the relative Tag Addressing that has made the difference.

IES Client v8.29 : My IES

Help Submit Quit Functions Commands

← ? 🔍 ⏪ ⏩ ⏴ ⏵ ⏶ ⏷ ⏸ ⏹ ⏺ ⏻ ⏼ ⏽ ⏾ ⏿

### TEMPLATE 003: TOTALS

TAG # 0079 TAG Description Tot Cost of Sales Bud

Tags to ADD (+)

1	0030
2	0035
3	0040
4	0045
5	0050
6	0055
7	0060
= none	

Select

Tags to Subtract (-)

1	

Select

Tag Addressing relative

Alignment c: right justified

Result Width 21

Display Mode MP02, I

Bold? NORMAL

Underline? NORMAL

Tag Result ALWAYS RETURN A RESULT

Test Operator =

Conditional Value

[Remove Template](#) [Copy Template](#)

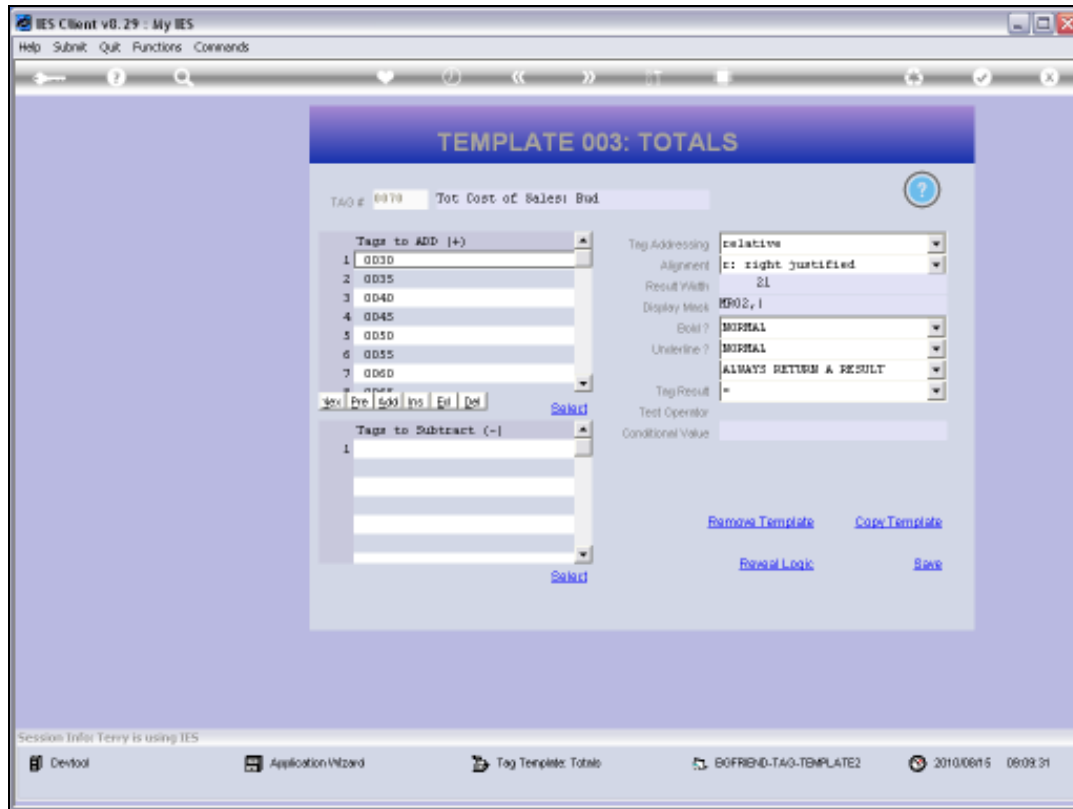
[Reveal Logic](#) [Save](#)

Session Info: Terry is using IES

Desktop Application Wizard Tag Template: Totals BOFRIND-TAG-TEMPLATE2 2010/09/15 09:09:29

Slide 47

Slide notes:



Slide 48

Slide notes: