

IES Client v8.29 : My IES

Help Submit Quit Functions Commands

TEMPLATE 002: GL Numeric - Single Rule

TAG # 0006

Name Fixed Assets

Name #1 (Mandatory) L1005-PRD LEDGER: Actual Ptd

Name #2 (Optional)

Names Operation 1: no operation

Acct Selection Basis B9008 BALANCE SHEET POSITION

Flag Value to Select 31

Sub Acct Lock

Tag Addressing relative

Period Mapping 2: tag maps to current year

Forex Exchange Rate 1: not used

Financial Scaling 1: no scaling

Rounding for Numbers 1: do not apply rounding

Display Mask NR02,1

Alignment right justified

Result Width 21

Bold? NORMAL

Underline? NORMAL

Sign Convent? (+/-)

Tag Result ALWAYS RETURN A RESULT

Operator =

Conditional Value

Copy Template

Remove Template

Reveal Link

Save

Session Info: Terry is using IES

Devtool Application Wizard Tag: Business Template BOFRIND-TAG-TEMPLATE1 2010/09/25 12:08:44

Slide 1

Slide notes: The concept of Period Mapping is not difficult to understand. IES has the ability to present Financial, Physical and other indicators on many kinds of Accounts for any Period of the User's choosing. For example, even though it may be August 2010 at the moment, we can choose on a Report to show the values as if it was actually May 2009, or for any other selected Period.

TEMPLATE 002: GL Numeric - Single Rule

TAG # **0000**
 Name **Fixed Assets**

Name #1 (Mandatory) **Liact-ptd LEDGERs Actual Ptd**
 Name #2 (Optional)
 Names Operation **1: no operation**
 Acct Selection Basis **BOFOS BALANCE SHEET POSITION**
 Flag Value to Select **31**
 Sub Acct Lock

[Copy Template](#)
[Remove Template](#)
[Reveal Link](#)
[Save](#)

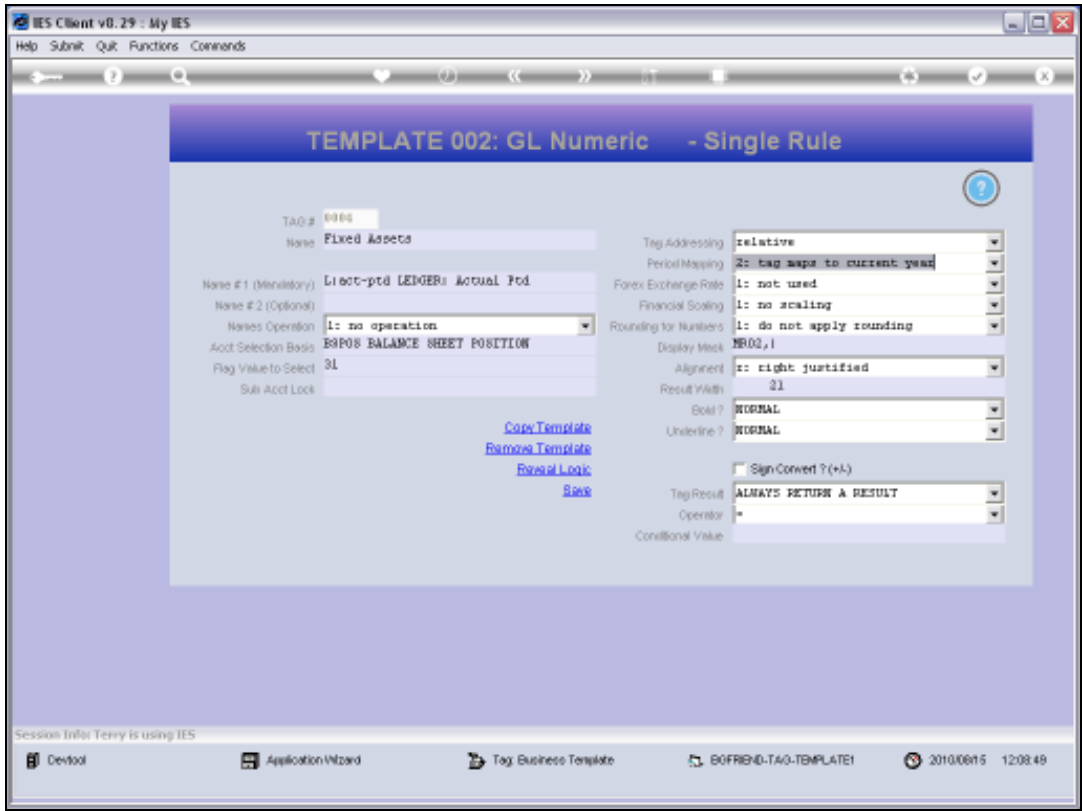
Tag Addressing **relative**
 Period Mapping **2: tag maps to current year**
 Forex Exchange Rate **1: not used**
 Financial Scaling **1: no scaling**
 Rounding for Numbers **1: do not apply rounding**
 Display Mask **NR02,1**
 Alignment **1: right justified**
 Result Width **31**
 Bold? **NORMAL**
 Underline? **NORMAL**
☐ Sign Convert (+/-)
 Tag Result **ALWAYS RETURN A RESULT**
 Operator *****
 Conditional Value

Session Info: Terry is using IES

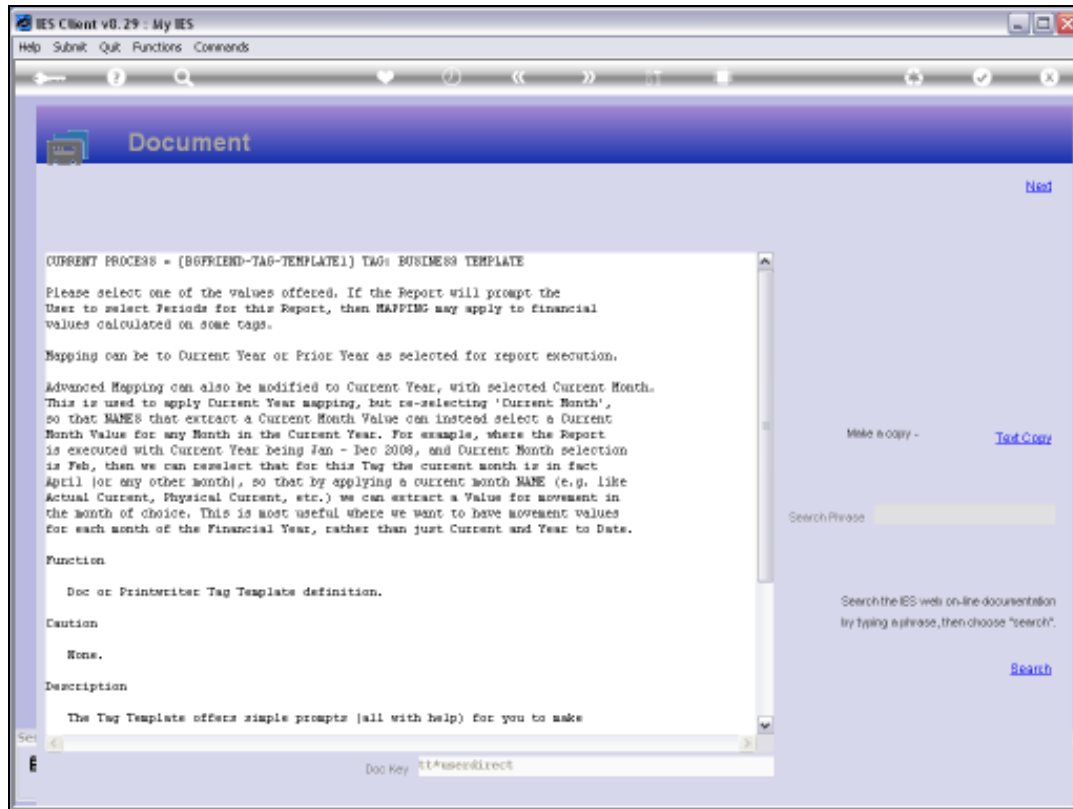
Desktop Application Wizard Tag Business Template BOFRIND-TAG-TEMPLATE1 2010/09/15 12:09:47

Slide 2

Slide notes: On the Templates that we use for Tags, and of course depending on the Template type, we commonly have a Field called 'Period Mapping'. This is the field that we can use to manipulate which Period answer will come up.

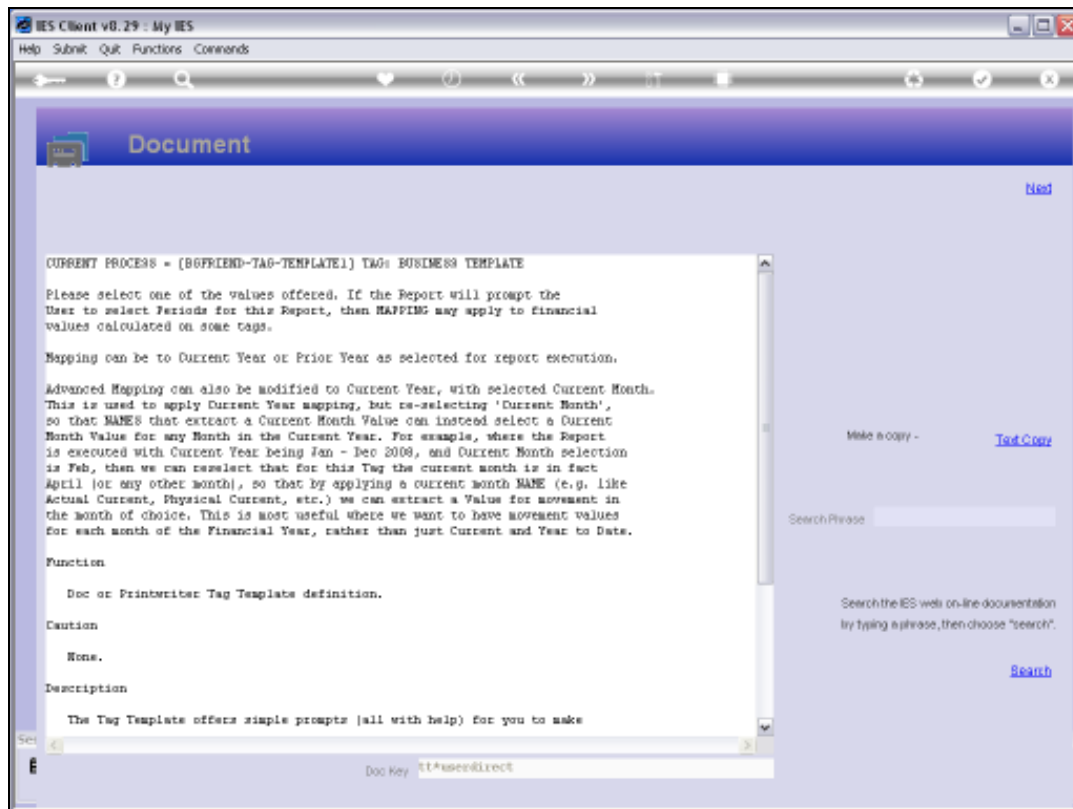


Slide 3
Slide notes:



Slide 4

Slide notes: The Help for this Field explains that we can map to This Year or a Prior Year, and even for the individual Months in any selected Year.



Slide 5

Slide notes:

IES Client v8.29 : My IES

Help Submit Quit Functions Commands

TEMPLATE 002: GL Numeric - Single Rule

Tag # 0000

Name Fixed Assets

Name #1 (Mandatory) Liabilities Actual Pod

Name #2 (Optional)

Names Operation 1: no operation

Acct Selection Basis BOFOS BALANCE SHEET POSITION

Flag Value to Select 31

Sub Acct Lock

Tag Addressing relative

Period Mapping 2: tag maps to current year

Forex Exchange Rate 1: not used

Financial Scaling 1: no scaling

Rounding for Numbers 1: do not apply rounding

Display Mask MR02,1

Alignment 1: right justified

Result Width 31

Bold? NORMAL

Underline? NORMAL

Sign Convent ? (+/-)

Tag Result ALWAYS RETURN A RESULT

Operator *

Conditional Value

[Copy Template](#)

[Remove Template](#)

[Reset Lock](#)

[Save](#)

Session Info: Terry is using IES

Desktop Application Wizard Tag Business Template BOFOS-BAL-SHEET-TEMPLATE1 2010/09/25 12:08:55

Slide 6

Slide notes:

IES Client v8.29 : My IES

Help Submit Quit Functions Commands

TEMPLATE 002: GL Numeric - Single Rule

Tag # 0000

Name Fixed Assets

Name #1 (Mandatory) Liabilities Actual Pod

Name #2 (Optional)

Names Operation 1: no operation

Acct Selection Basis BOPUS BALANCE SHEET POSITION

Flag Value to Select 31

Sub Acct Lock

Tag Addressing relative

Period Mapping 2: tag maps to current year

Forex Exchange Rate 1: not used

Financial Scaling 1: no scaling

Rounding for Numbers 1: do not apply rounding

Display Mask MR02,1

Alignment 1: right justified

Result Width 31

Bold? NORMAL

Underline? NORMAL

Sign Convent? (+/-)

Tag Result ALWAYS RETURN A RESULT

Operator *

Conditional Value

[Copy Template](#)

[Remove Template](#)

[Reset Lock](#)

[Save](#)

Session Info: Terry is using IES

Desktop Application Wizard Tag Business Template BOFRIND-TAG-TEMPLATE1 2010/09/15 12:08:55

Slide 7

Slide notes:

IES Client v8.29 : My IES

Help Submit Quit Functions Commands

TEMPLATE 002: GL Numeric - Single Rule

TAG # 0000

Name Fixed Assets

Name #1 (Mandatory) Liact-ptd LEDGERs Actual Ptd

Name #2 (Optional) 1: no operation

Acct Selection Basis BPOs BALANCE SHEET POSITION

Flag Value to Select 31

Sub Acct Lock

Tag Addressing relative

Period Mapping 2: Tag maps to Current Year

Financial Scaling 3: Tag maps to Prior Year

Rounding for Numbers 4: Current Year, Month 1

Display Mask 5: Current Year, Month 2

Alignment 6: Current Year, Month 3

Result Width 7: Current Year, Month 4

Bold? 8: Current Year, Month 5

Underline? 9: Current Year, Month 6

Sign Convert ? (+/-) NORMAL

Tag Result ALWAYS RETURN A RESULT

Operator =

Conditional Value

[Copy Template](#)

[Remove Template](#)

[Reveal Link](#)

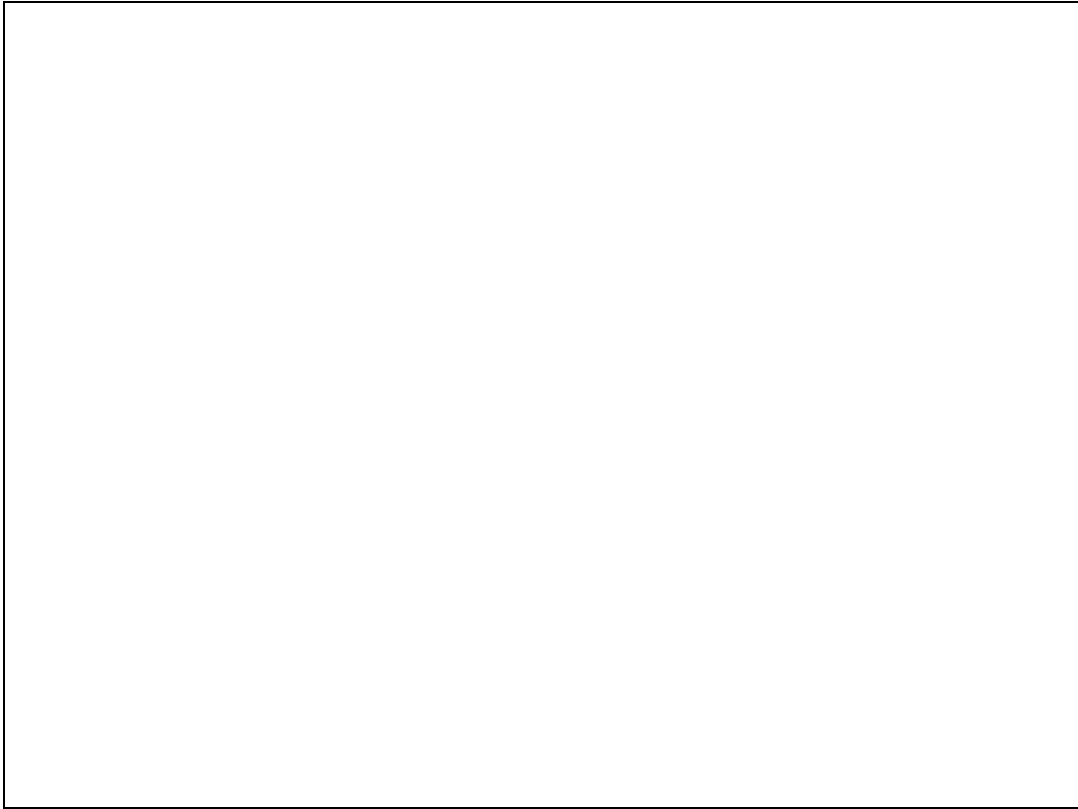
[Save](#)

Session Info: Terry is using IES

Devtool Application Wizard Tag Business Template BOFRIND-TAG-TEMPLATE1 2010/09/25 12:08:57

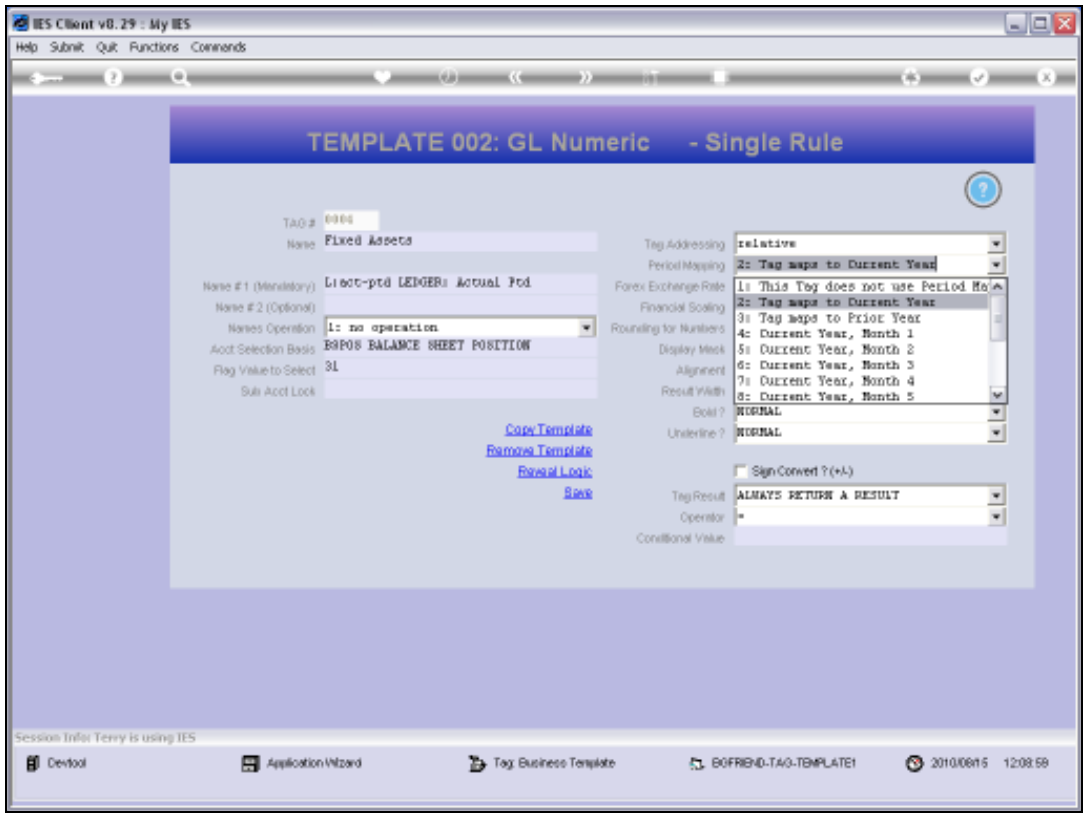
Slide 8

Slide notes: We do that by selecting the desired option on the 'Period Mapping' field. The rest is determined by the User selected Period parameters when performing the Report.



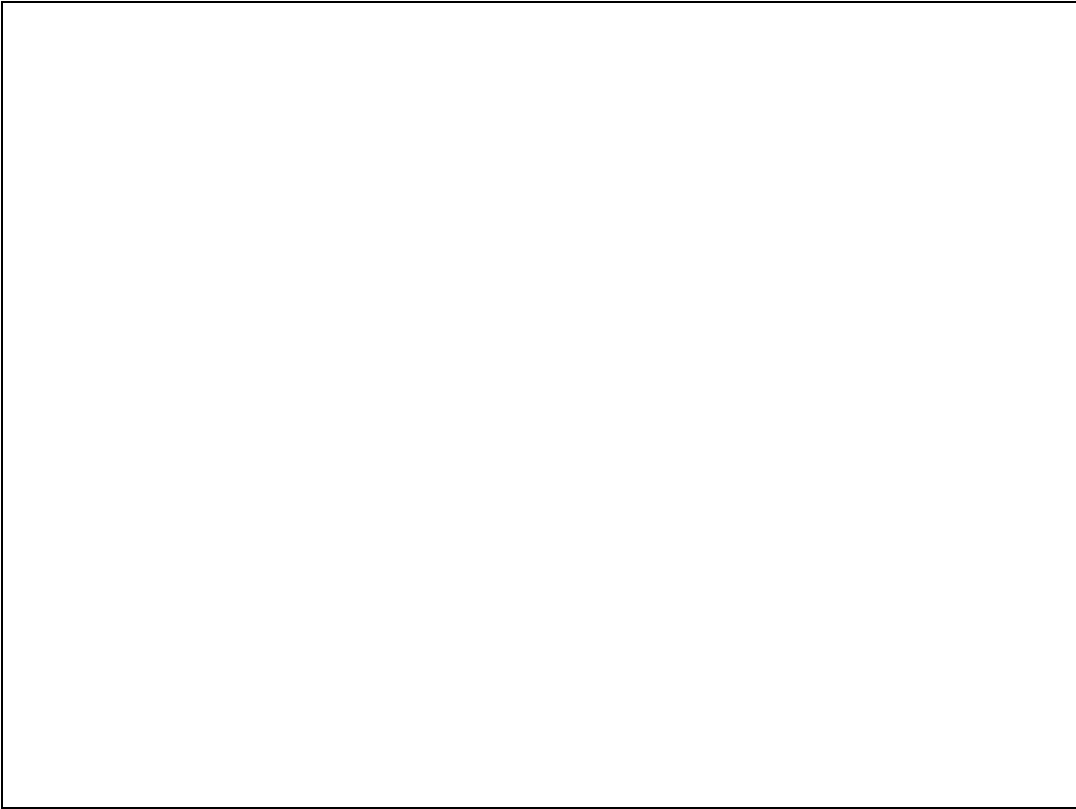
Slide 9

Slide notes:



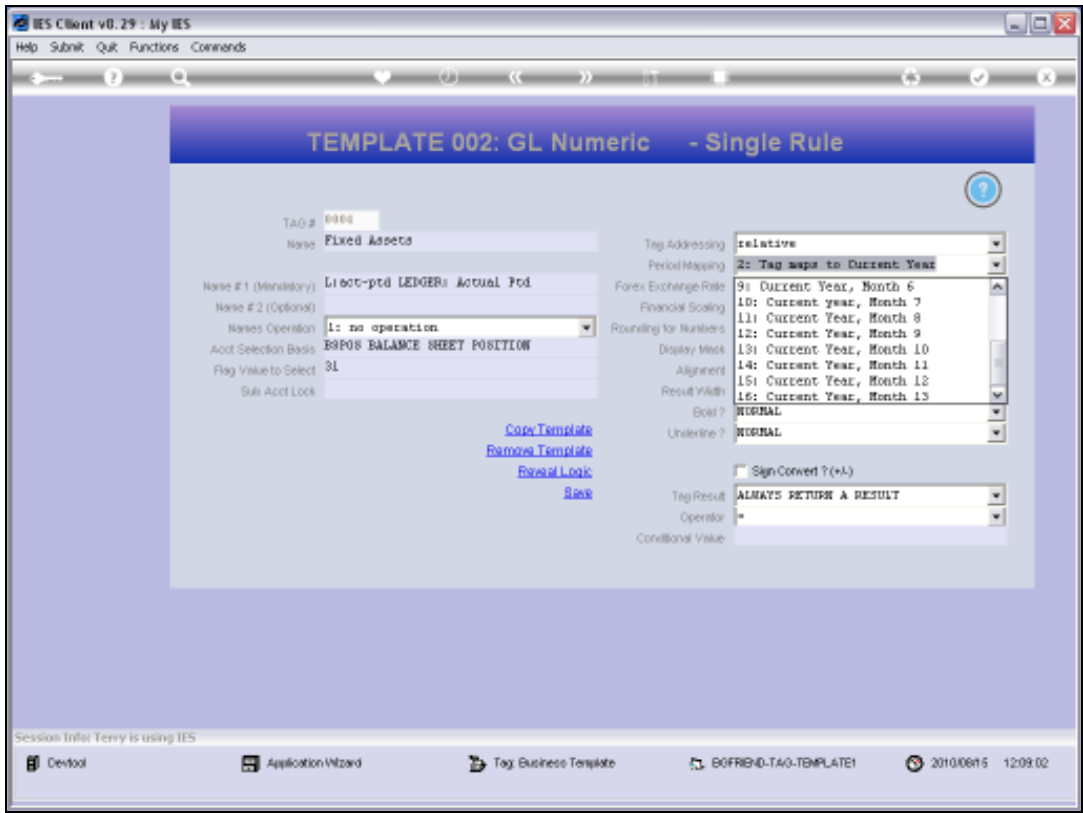
Slide 10

Slide notes:



Slide 11

Slide notes:



Slide 12
Slide notes:

IES Client v8.29 : My IES

Help Submit Quit Functions Commands

TEMPLATE 002: GL Numeric - Single Rule

Tag # 0000

Name Fixed Assets

Name #1 (Mandatory) Liact-ptd LEDGER Actual Ptd

Name #2 (Optional)

Names Operation 1: no operation

Acct Selection Basis BOPUS BALANCE SHEET POSITION

Flag Value to Select 31

Sub Acct Lock

Tag Addressing relative

Period Mapping 2: Tag maps to Current Year

Forex Exchange Rate 1: not used

Financial Scaling 1: no scaling

Rounding for Numbers 1: do not apply rounding

Display Mask MR02,1

Alignment 1: right justified

Result Width 21

Bold? NORMAL

Underline? NORMAL

Sign Convent? (+/-)

Tag Result ALWAYS RETURN A RESULT

Operator *

Conditional Value

[Copy Template](#)

[Remove Template](#)

[Reset Lock](#)

[Save](#)

Session Info: Terry is using IES

Desktop Application Wizard Tag Business Template BOFRIND-TAG-TEMPLATE1 2010/09/15 12:09:04

Slide 13

Slide notes:

	(0002)	(0003)
ASSETS		
NON-CURRENT ASSETS		
Fixed Assets	(0004)	(0005)
Deferred taxation asset	(0006)	(0007)
Total non-current assets	(0008)	(0009)
CURRENT ASSETS		
AR Debtors	(0010)	(0011)
Bank and Cash Balances	(0012)	(0013)
Stock and Stores	(0014)	(0015)
Total current assets	(0016)	(0017)
TOTAL ASSETS	(0018)	(0019)
EQUITY AND LIABILITIES		
SHAREHOLDERS DEFICIT		
Share capital	(0020)	(0021)
Accumulated Profit(-) / Loss(+)	(0022)	(0023)
CURRENT LIABILITIES		
Loans	(0024)	(0025)
AP Creditors	(0026)	(0027)
TOTAL EQUITY AND LIABILITIES	(0028)	(0029)

Slide 14

Slide notes: Here is a preview of a Balance Sheet Layout example, and in this example we compare the Balance Sheet values for This Year with Last Year. What the meaning of This Year and Last Year will be. All depends on what the User chooses when performing the Report, and that is why we have Tag 2 for This Year and Tag 3 for Last Year, as we do not know in advance what these Periods will be, and the User is going to select it when performing the Balance Sheet Report.

(0001) Balance Sheet	(0002)	(0003)
ASSETS		
NON-CURRENT ASSETS		
Fixed Assets	(0004)	(0005)
Deferred taxation asset	(0006)	(0007)
Total non-current assets	(0008)	(0009)
CURRENT ASSETS		
AR Debtors	(0010)	(0011)
Bank and Cash Balances	(0012)	(0013)
Stock and Stores	(0014)	(0015)
Total current assets	(0016)	(0017)
TOTAL ASSETS	(0018)	(0019)
EQUITY AND LIABILITIES		
SHAREHOLDERS DEFICIT		
Share capital	(0020)	(0021)
Accumulated Profit(-) / Loss(+)	(0022)	(0023)
CURRENT LIABILITIES		
Loans	(0024)	(0025)
AP Creditors	(0026)	(0027)
TOTAL EQUITY AND LIABILITIES	(0028)	(0029)

Slide 15

Slide notes:

	(0002)	(0003)
(0001) Balance Sheet		
ASSETS		
NON-CURRENT ASSETS		
Fixed Assets (0004)		(0005)
Deferred taxation asset (0006)		(0007)
Total non-current assets (0008)		(0009)
CURRENT ASSETS		
AR Debtors (0010)		(0011)
Bank and Cash Balances (0012)		(0013)
Stock and Stores (0014)		(0015)
Total current assets (0016)		(0017)
TOTAL ASSETS (0018)		(0019)
EQUITY AND LIABILITIES		
SHAREHOLDERS DEFICIT		
Share capital (0020)		(0021)
Accumulated Profit(-) / Loss(+) (0022)		(0023)
CURRENT LIABILITIES		
Loans (0024)		(0025)
AP Creditors (0026)		(0027)
TOTAL EQUITY AND LIABILITIES (0028)		(0029)

Slide 16

Slide notes: Now, when we consider the Line for Fixed Assets on this Layout, we have Tag 4 for This Year, and we have Tag 5 for Last Year. Tag 4 is going to produce the answer for the total value of the Fixed Assets for This Year, and it all depends on which Period the User will select as This Year.

	(0002)	(0003)
(0001) Balance Sheet		
ASSETS		
NON-CURRENT ASSETS		
Fixed Assets	(0004)	(0005)
Deferred taxation asset	(0006)	(0007)
Total non-current assets	(0008)	(0009)
CURRENT ASSETS		
AR Debtors	(0010)	(0011)
Bank and Cash Balances	(0012)	(0013)
Stock and Stores	(0014)	(0015)
Total current assets	(0016)	(0017)
TOTAL ASSETS	(0018)	(0019)
EQUITY AND LIABILITIES		
SHAREHOLDERS DEFICIT		
Share capital	(0020)	(0021)
Accumulated Profit(-) / Loss(+)	(0022)	(0023)
CURRENT LIABILITIES		
Loans	(0024)	(0025)
AP Creditors	(0026)	(0027)
TOTAL EQUITY AND LIABILITIES	(0028)	(0029)

Slide 17

Slide notes: As a matter of fact, Tag 5 will do exactly the same thing as Tag 4, and the only difference between the 2 is that Tag 5 will 'map' to the Period that the User selects as Last Year. So that is what Period Mapping is all about - it is the ability to lock into a Period view of a certain Value selection.

	0002	0003
ASSETS		
NON-CURRENT ASSETS		
Fixed Assets	(0004)	(0005)
Deferred taxation asset	(0006)	(0007)
Total non-current assets	(0008)	(0009)
CURRENT ASSETS		
AR Debtors	(0010)	(0011)
Bank and Cash Balances	(0012)	(0013)
Stock and Stores	(0014)	(0015)
Total current assets	(0016)	(0017)
TOTAL ASSETS	(0018)	(0019)
EQUITY AND LIABILITIES		
SHAREHOLDERS DEFICIT		
Share capital	(0020)	(0021)
Accumulated Profit(-) / Loss(+)	(0022)	(0023)
CURRENT LIABILITIES		
Loans	(0024)	(0025)
AP Creditors	(0026)	(0027)
TOTAL EQUITY AND LIABILITIES	(0028)	(0029)

Slide 18

Slide notes:

IES Client v8.29 : My IES

Help Submit Quit Functions Commands

REPORT RUNTIME VALUES

This report can interpret the Financial Year according to your Selection.

Please choose the Periods to Apply -

CURRENT YEAR: -		PRIOR YEAR: -	
Year Start Period	Jul 2010 (p 114)	Year Start Period	Aug 2008 (p 91)
Current Month	Aug 2010 (p 115)	Current Month	Jun 2009 (p 101)
End Of Year		End Of Year	Jul 2009 (p 102)

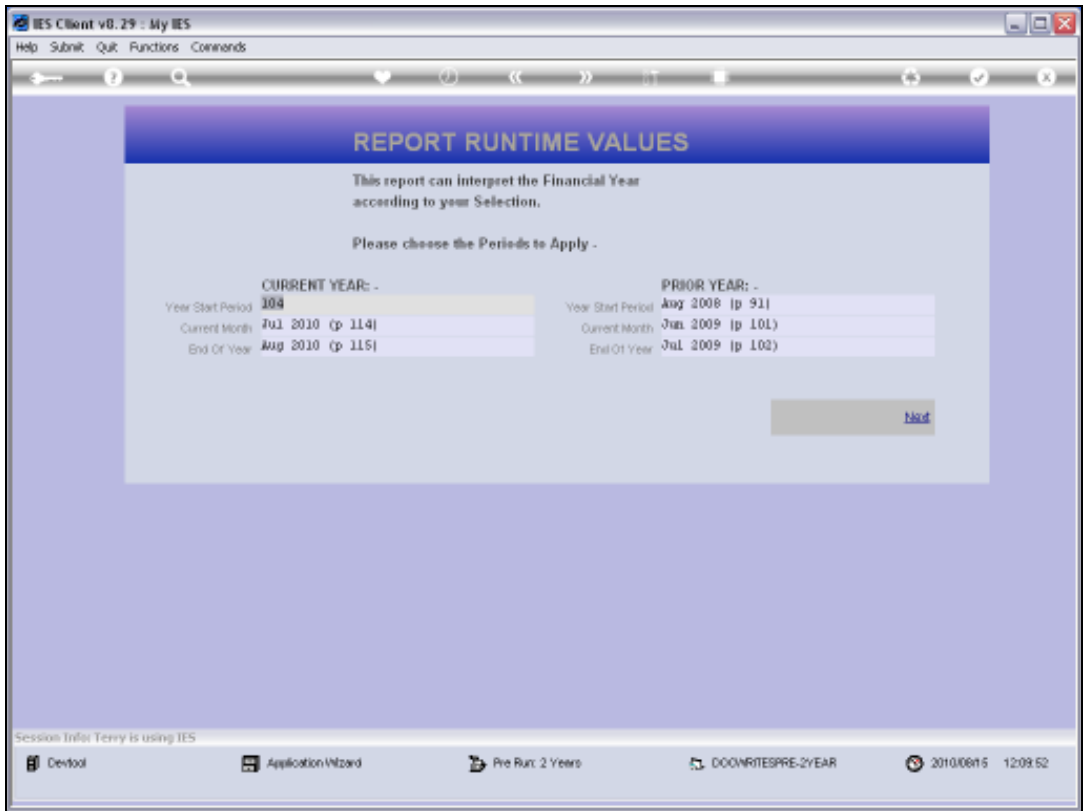
[Next](#)

Session Info: Terry is using IES

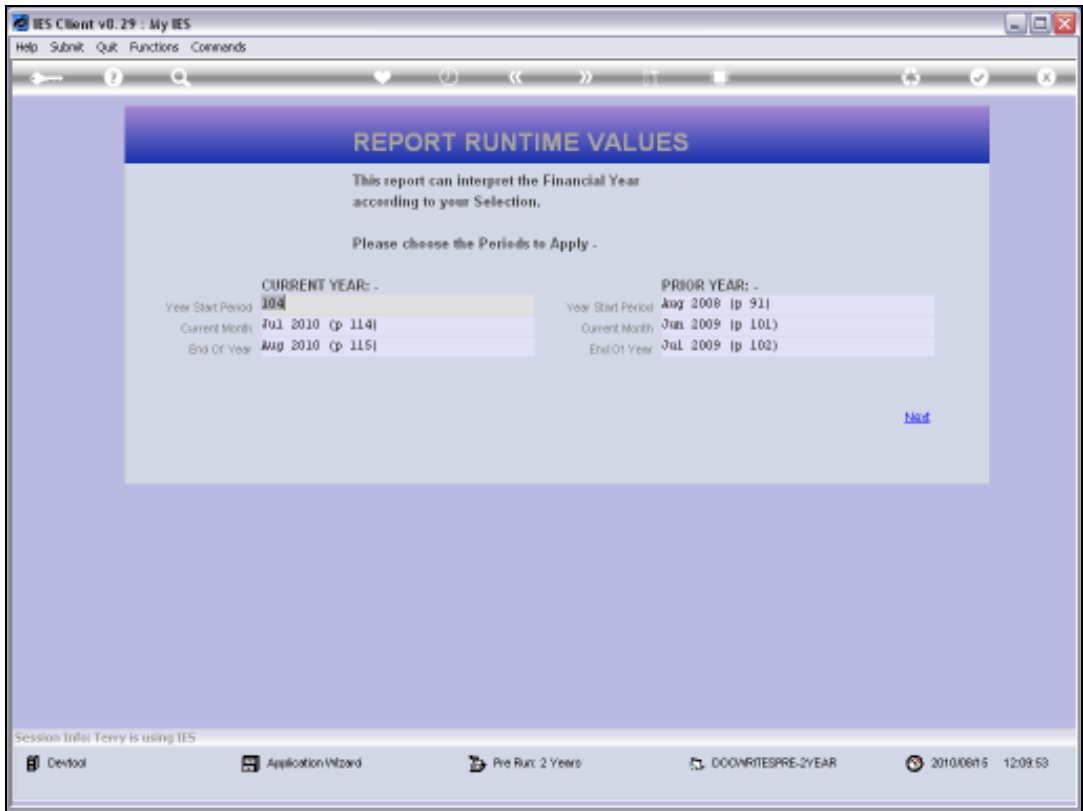
Devtool Application Wizard Pre Run: 2 Years DOONRITESPRE-2YEAR 2010/09/15 12:09:50

Slide 19

Slide notes: When this Report is performed, it comes up with a pre-run Screen like this. The system defaults Period values for This Year and Last Year, based on current real settings in the Business system, but the User is most welcome to change any of the indicated Periods and thereby choose a differently MAPPED view.



Slide 20
Slide notes:

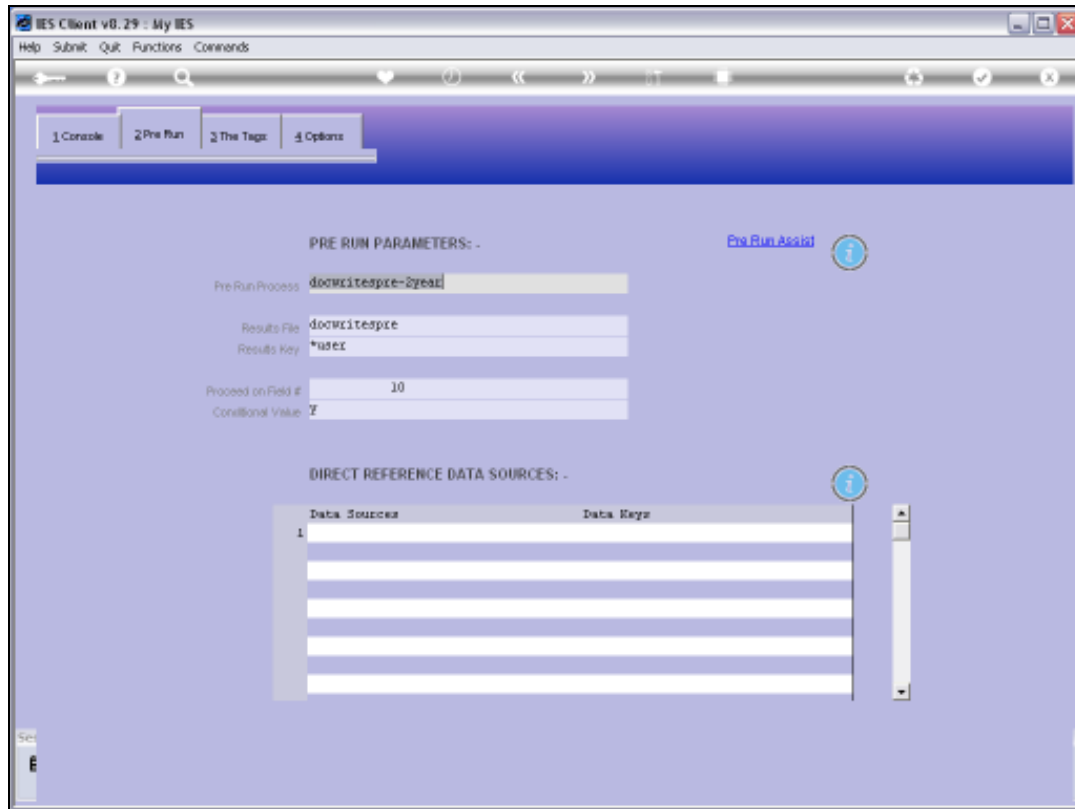


Slide 21
Slide notes:



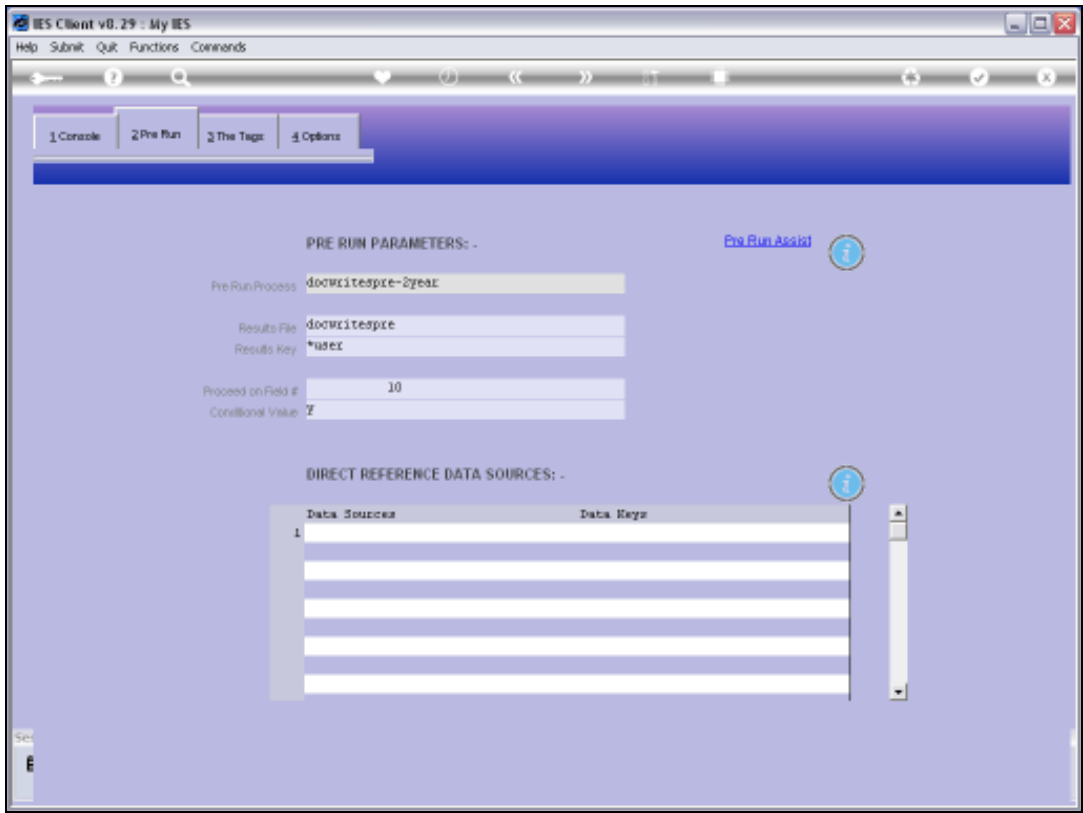
Slide 22

Slide notes: That screen that allows the User to choose Period Mapping is part of the DocWriter Report, and is called a pre-run process.



Slide 23

Slide notes: Here is the name of the pre-run process, which can be selected with the 'Pre Run Assist' function.

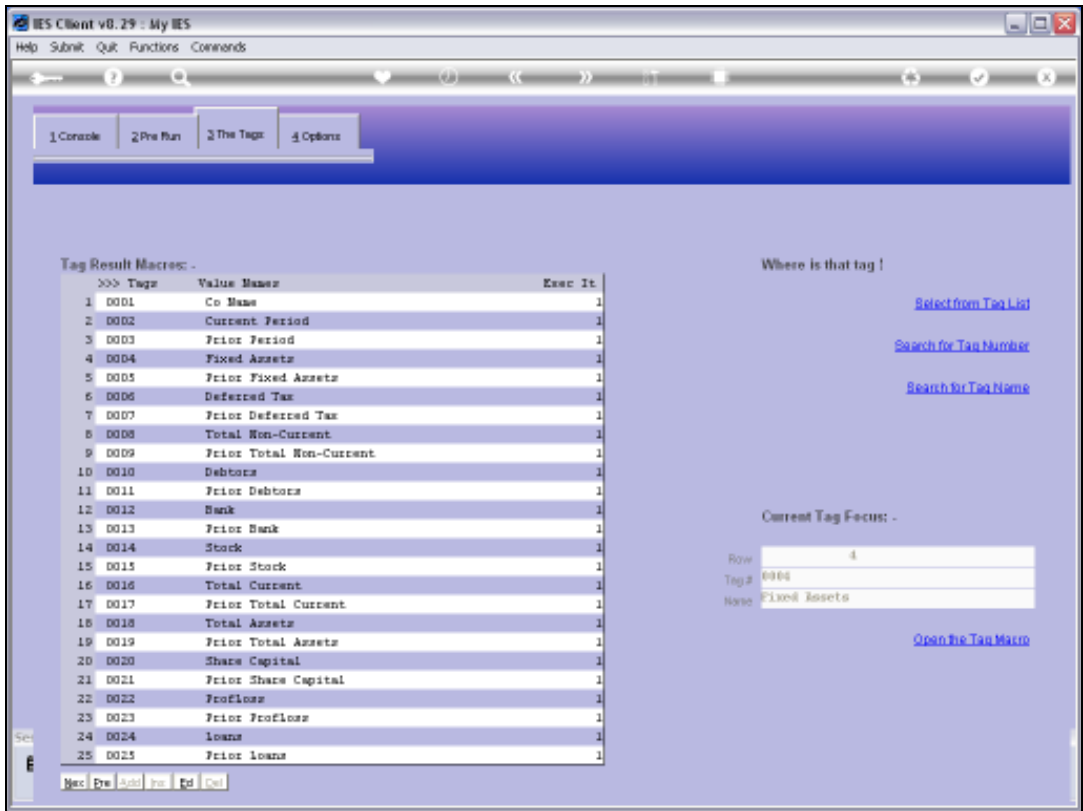


Slide 24
Slide notes:

	(0002)	(0003)
(0001) Balance Sheet		
ASSETS		
NON-CURRENT ASSETS		
Fixed Assets	(0004)	(0005)
Deferred taxation asset	(0006)	(0007)
Total non-current assets	(0008)	(0009)
CURRENT ASSETS		
AR Debtors	(0010)	(0011)
Bank and Cash Balances	(0012)	(0013)
Stock and Stores	(0014)	(0015)
Total current assets	(0016)	(0017)
TOTAL ASSETS	(0018)	(0019)
EQUITY AND LIABILITIES		
SHAREHOLDERS DEFICIT		
Share capital	(0020)	(0021)
Accumulated Profit(-) / Loss(+)	(0022)	(0023)
CURRENT LIABILITIES		
Loans	(0024)	(0025)
AP Creditors	(0026)	(0027)
TOTAL EQUITY AND LIABILITIES	(0028)	(0029)

Slide 25

Slide notes: Now, to understand this clearly, we can have another look at Tag 4 for Total Fixed Asset Value at a selected Period, and then compare it with Tag 5. The only difference between the 2 Templates will be the Period Mapping setting because Tag 4 is for This Year and Tag 5 is for Last Year.



Slide 26
Slide notes:

IES Client v8.29: My IES

Help Submit Quit Functions Commands

TEMPLATE 002: GL Numeric - Single Rule

TAG # 0004

Name Fixed Asset

Name #1 (Mandatory) Liact-pta LEDGER Actual Ptd

Name #2 (Optional) 1: no operation

Names Operation BSPOS BALANCE SHEET POSITION

Acct Selection Basis 31

Flag Value to Select 31

Sub Acct Lock

Tag Addressing relative

Period Mapping 2: tag maps to current year

Forex Exchange Rate 1: not used

Financial Scaling 1: no scaling

Rounding for Numbers 1: do not apply rounding

Display Mask NR02,i

Alignment r: right justified

Result Width 31

Bold? NORMAL

Underline? NORMAL

Sign Convent? (+/-)

Tag Result ALWAYS RETURN A RESULT

Operator =

Conditional Value

[Copy Template](#)

[Remove Template](#)

[Reveal Link](#)

[Save](#)

Session Info: Terry is using IES

Desktop Application Wizard Tag Business Template BOFRIND-TAG-TEMPLATE1 2010/09/25 12:12:25

Slide 27

Slide notes: Tag 4 uses the name for 'Actual Period to Date', which produces the answer, and it is based on all Accounts selected where the BSPOS Flag = 31.

IES Client v8.29 : My IES

Help Submit Quit Functions Commands

TEMPLATE 002: GL Numeric - Single Rule

Tag # 0000
Name Fixed Asset

Name #1 (Mandatory) Liab-pta LEDGER Actual Ptd
Name #2 (Optional)
Names Operation 1: no operation
Acct Selection Basis BOPUS BALANCE SHEET POSITION
Flag Value to Select 31
Sub Acct Lock

Tag Addressing relative
Period Mapping 2: tag maps to current year
Forex Exchange Rate 1: not used
Financial Scaling 1: no scaling
Rounding for Numbers 1: do not apply rounding
Display Mask MR02,i
Alignment 1: right justified
Result Width 31
Bold? NORMAL
Underline? NORMAL
☐ Sign Convert ?(+)

Tag Result ALWAYS RETURN A RESULT
Operator =
Conditional Value

[Copy Template](#)
[Remove Template](#)
[Reset Lock](#)
[Save](#)

Session Info: Terry is using IES

Desktop Application Wizard Tag Business Template BOFRIND-TAG-TEMPLATE1 2010/09/15 12:12:25

Slide 28

Slide notes: The Period Mapping points to This Year.

IES Client v8.29 : My IES

Help Submit Quit Functions Commands

TEMPLATE 002: GL Numeric - Single Rule

Tag # 0000

Name Fixed Assets

Name #1 (Mandatory) Liabilities Actual Pod

Name #2 (Optional)

Names Operation 1: no operation

Acct Selection Basis BOPUS BALANCE SHEET POSITION

Flag Value to Select 31

Sub Acct Lock

Tag Addressing relative

Period Mapping 2: tag maps to current year

Forex Exchange Rate 1: not used

Financial Scaling 1: no scaling

Rounding for Numbers 1: do not apply rounding

Display Mask MR02,1

Alignment 1: right justified

Result Width 31

Bold? NORMAL

Underline? NORMAL

Sign Convent ? (+/-)

Tag Result ALWAYS RETURN A RESULT

Operator *

Conditional Value

[Copy Template](#)

[Remove Template](#)

[Reset Lock](#)

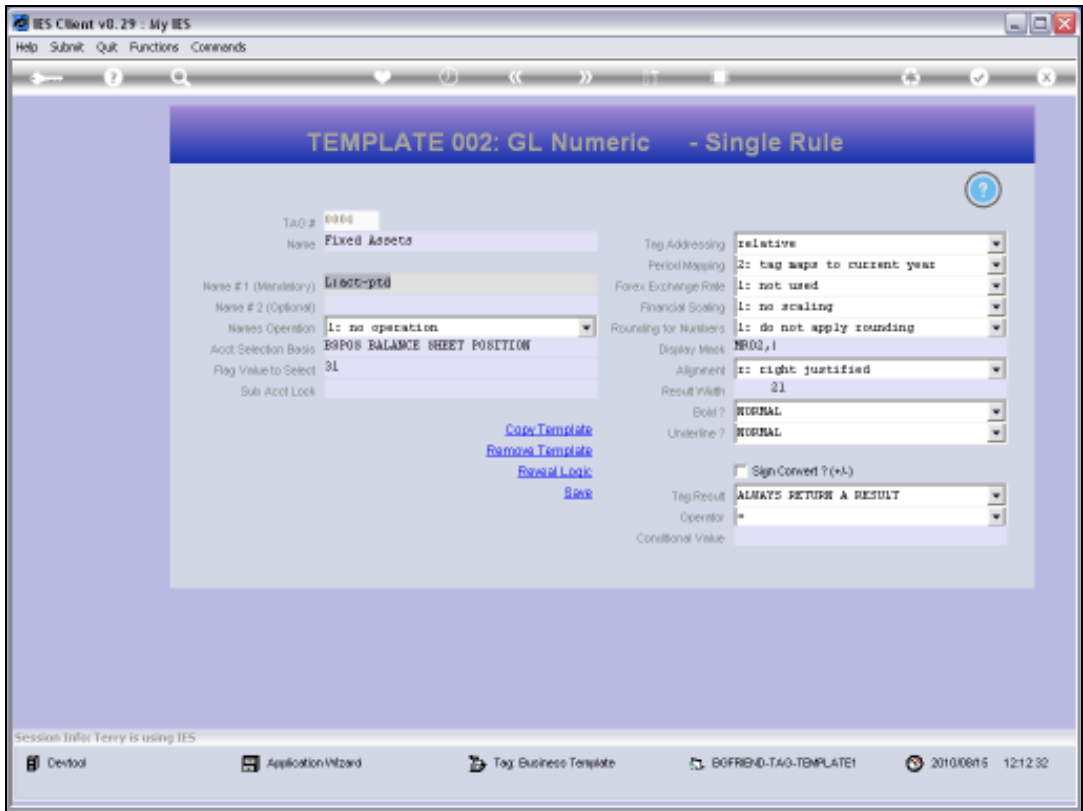
[Save](#)

Session Info: Terry is using IES

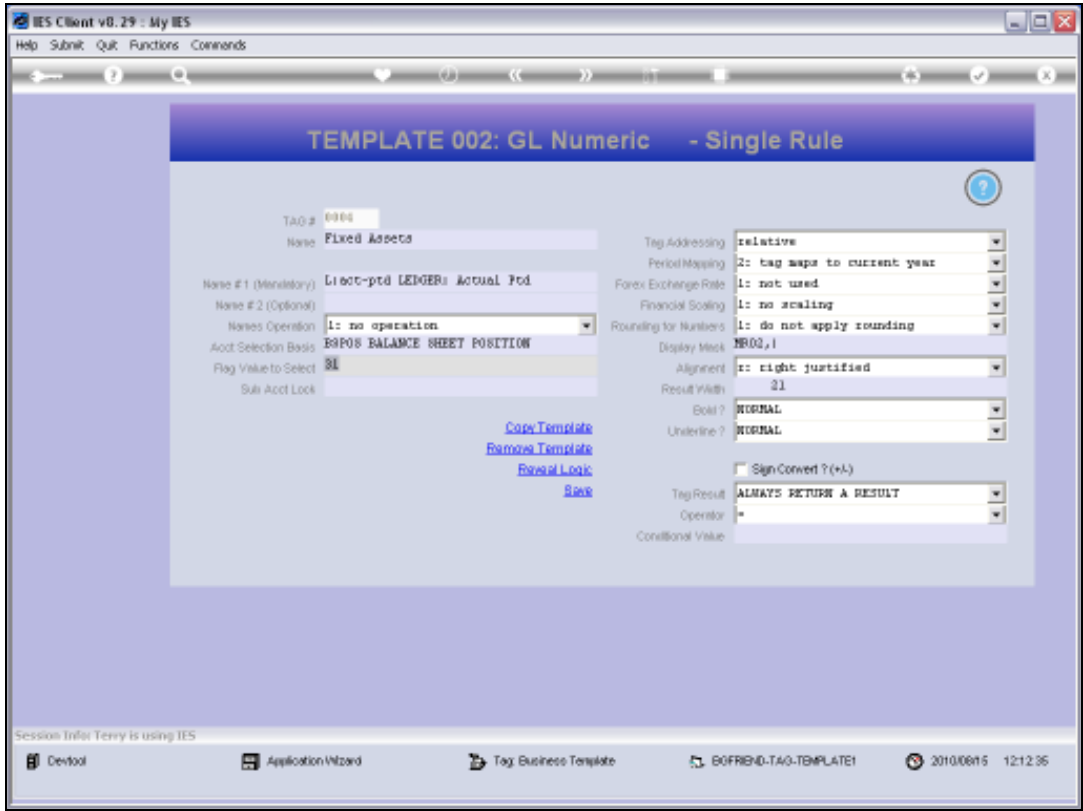
Desktop Application Wizard Tag Business Template BOFRIND-TAG-TEMPLATE1 2010/09/15 12:12:28

Slide 29

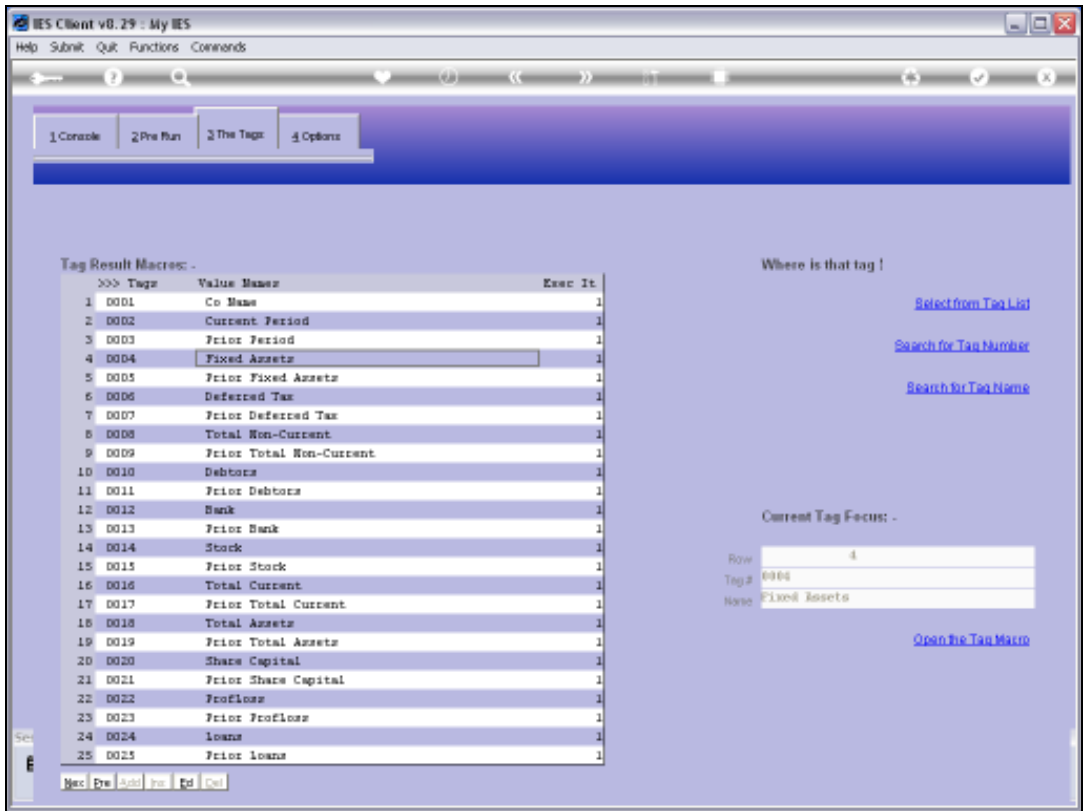
Slide notes:



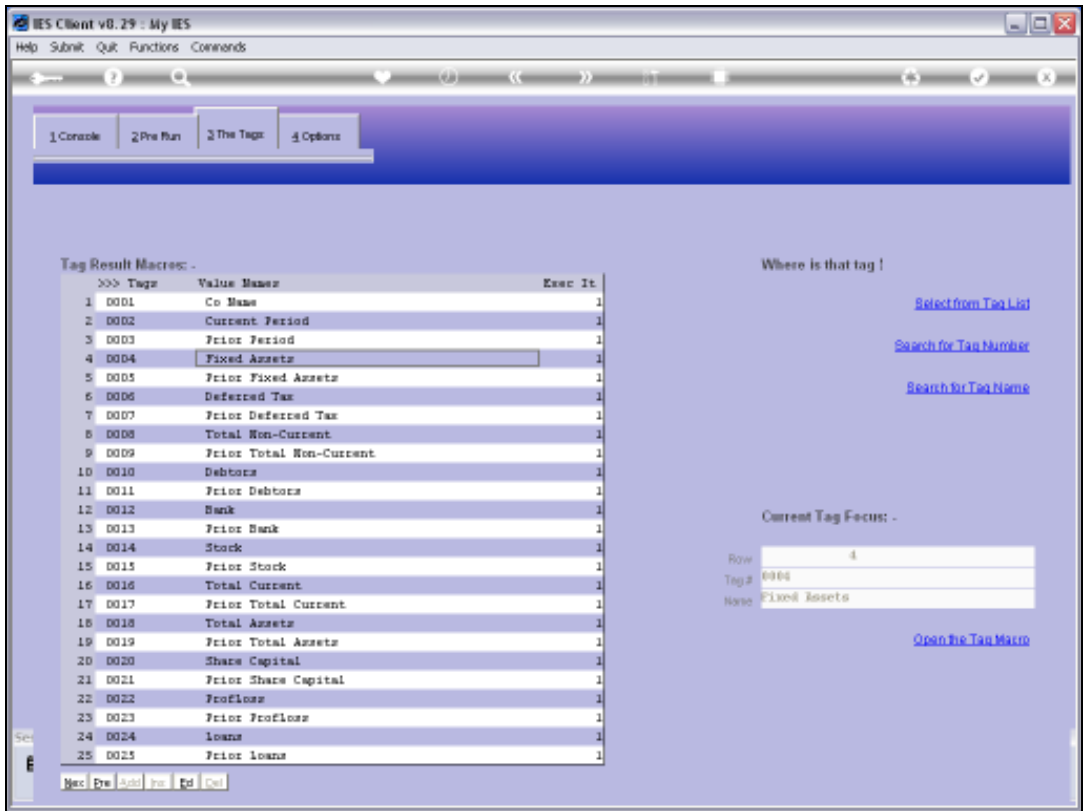
Slide 30
Slide notes:



Slide 31
Slide notes:



Slide 32
Slide notes:



Slide 33
Slide notes:

IES Client v8.29 : My IES

Help Submit Quit Functions Commands

TEMPLATE 002: GL Numeric - Single Rule

Tag # 0003

Name Prior: Fixed Asset

Name #1 (Mandatory) Liab-pta LEDGER Actual Ptd

Name #2 (Optional)

Names Operation 1: no operation

Acct Selection Basis BOPUS BALANCE SHEET POSITION

Flag Value to Select 31

Sub Acct Lock

Tag Addressing relative

Period Mapping 3: tag maps to prior year

Forex Exchange Rate 1: not used

Financial Scaling 1: no scaling

Rounding for Numbers 1: do not apply rounding

Display Mask MR02,1

Alignment 1: right justified

Result Width 31

Bold? NORMAL

Underline? NORMAL

Sign Convent ? (+/-)

Tag Result ALWAYS RETURN A RESULT

Operator *

Conditional Value

[Copy Template](#)

[Remove Template](#)

[Reset Lock](#)

[Save](#)

Session Info: Terry is using IES

Desktop Application Wizard Tag: Business Template BOFRIND-TAG-TEMPLATE1 2010/09/15 12:12:39

Slide 34

Slide notes: Tag 5 looks quite the same, except that the Period Mapping points to Last Year.

IES Client v8.29 : My IES

Help Submit Quit Functions Commands

TEMPLATE 002: GL Numeric - Single Rule

Tag # 0003
Name PRIOR: Fixed Assets

Name #1 (Mandatory) LIAB-PTD LEDGER Actual Ptd
Name #2 (Optional)
Names Operation 1: no operation
Acct Selection Basis BOPUS BALANCE SHEET POSITION
Flag Value to Select 31
Sub Acct Lock

Tag Addressing relative
Period Mapping 3: tag maps to prior year
Forex Exchange Rate 1: not used
Financial Scaling 1: no scaling
Rounding for Numbers 1: do not apply rounding
Display Mask NR02,1
Alignment 1: right justified
Result Width 21
Bold? NORMAL
Underline? NORMAL

[Copy Template](#)
[Remove Template](#)
[Reset Lock](#)
[Save](#)

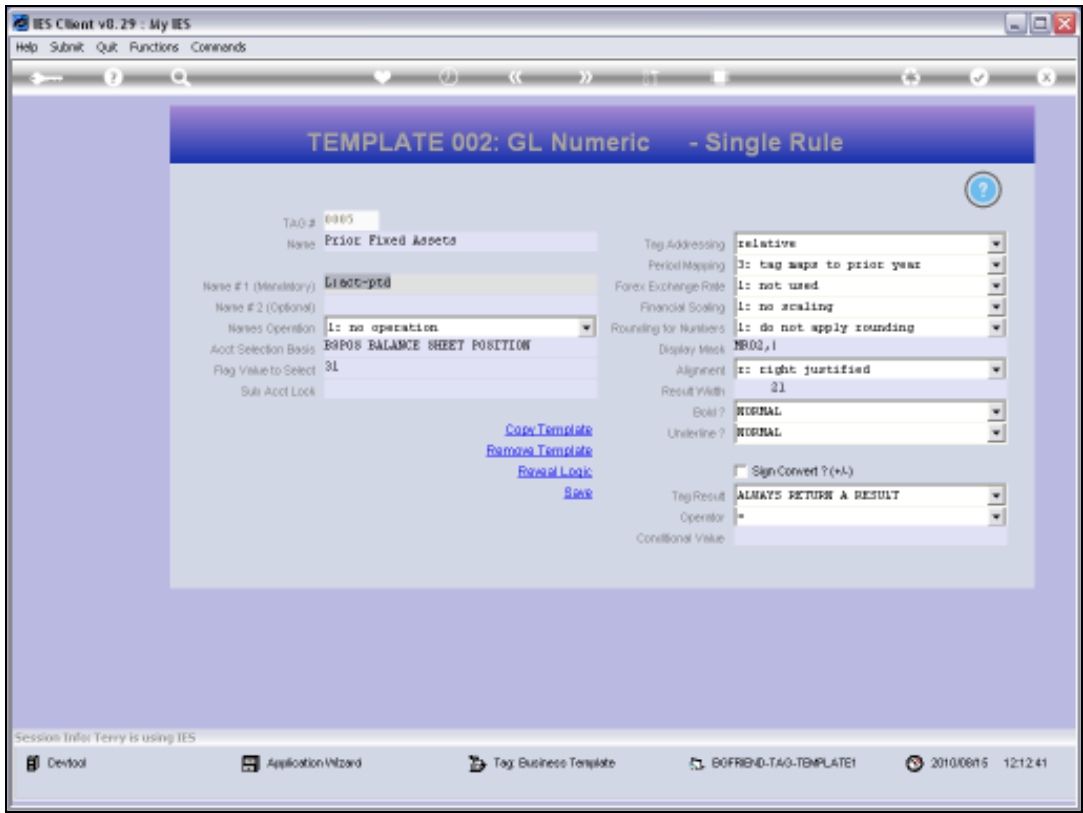
Tag Result ALWAYS RETURN A RESULT
Operator =
Conditional Value

Session Info: Terry is using IES

Desktop Application Wizard Tag Business Template BOFRIND-TAG-TEMPLATE1 2010/09/15 12:12:39

Slide 35

Slide notes:



Slide 36

Slide notes:

IES Client v8.29 : My IES

Help Submit Quit Functions Commands

TEMPLATE 002: GL Numeric - Single Rule

Tag # 0003
Name Prior Fixed Assets

Name #1 (Mandatory) Liab-pta LEDGERs Actual Ptd
Name #2 (Optional)
Names Operation 1: no operation
Acct Selection Basis BOPUS BALANCE SHEET POSITION
Flag Value to Select 31
Sub Acct Lock

Tag Addressing relative
Period Mapping 3: tag maps to prior year
Forex Exchange Rate 1: not used
Financial Scaling 1: no scaling
Rounding for Numbers 1: do not apply rounding
Display Mask BR02,1
Alignment 1: right justified
Result Width 21
Bold? NORMAL
Underline? NORMAL

[Copy Template](#)
[Remove Template](#)
[Reset Lock](#)
[Save](#)

Tag Result ALWAYS RETURN A RESULT
Operator =
Conditional Value

Session Info: Terry is using IES

Desktop Application Wizard Tag Business Template BOFRIND-TAG-TEMPLATE1 2010/09/15 12:12:43

Slide 37

Slide notes:

IES Client v8.29 : My IES

Help Submit Quit Functions Commands

TEMPLATE 002: GL Numeric - Single Rule

Tag # 0003
Name Prior Fixed Assets

Name #1 (Mandatory) Liab-pta LEDGER Actual Ptd
Name #2 (Optional)
Names Operation 1: no operation
Acct Selection Basis BOPUS BALANCE SHEET POSITION
Flag Value to Select 31
Sub Acct Lock

Tag Addressing relative
Period Mapping 3: tag maps to prior year
Forex Exchange Rate 1: not used
Financial Scaling 1: no scaling
Rounding for Numbers 1: do not apply rounding
Display Mask MR02,1
Alignment 1: right justified
Result Width 31
Bold? NORMAL
Underline? NORMAL
☐ Sign Convert ? (+/-)
Tag Result ALWAYS RETURN A RESULT
Operator =
Conditional Value

[Copy Template](#)
[Remove Template](#)
[Reveal Lock](#)
[Save](#)

Session Info: Terry is using IES

Desktop Application Wizard Tag Business Template BOFRIND-TAG-TEMPLATE1 2010/09/15 12:12:46

Slide 38

Slide notes: And therein is the power of the Period Mapping setting on Tag Templates.