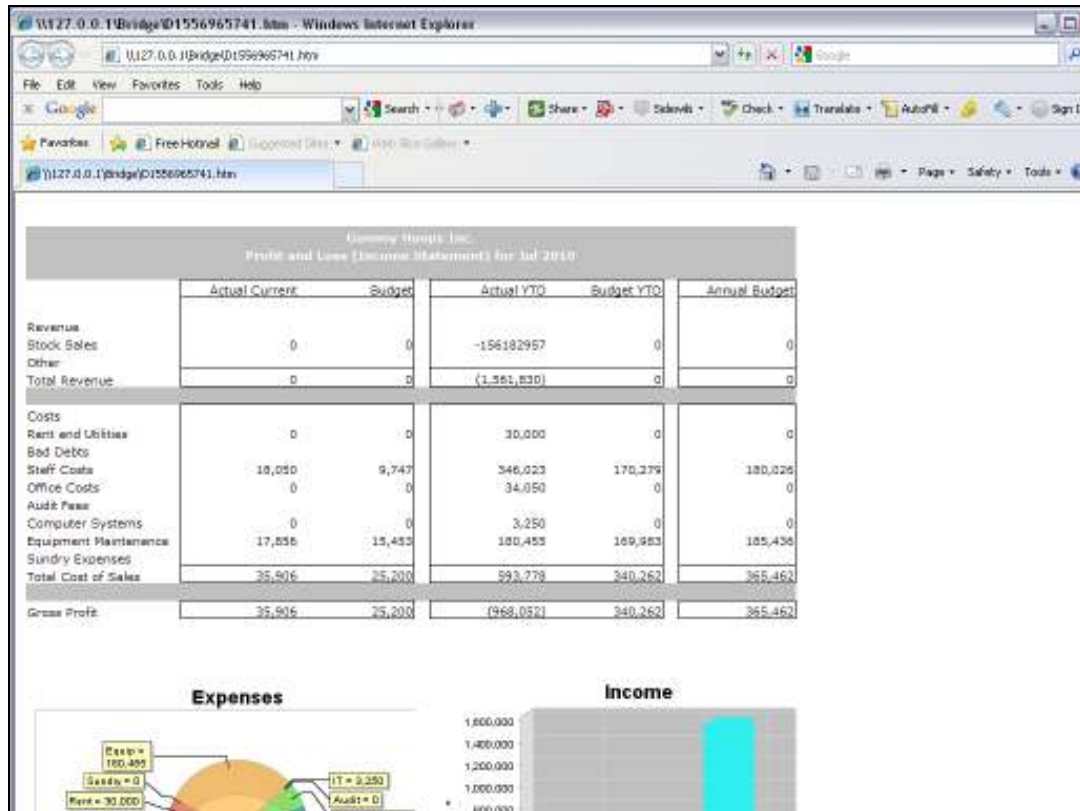


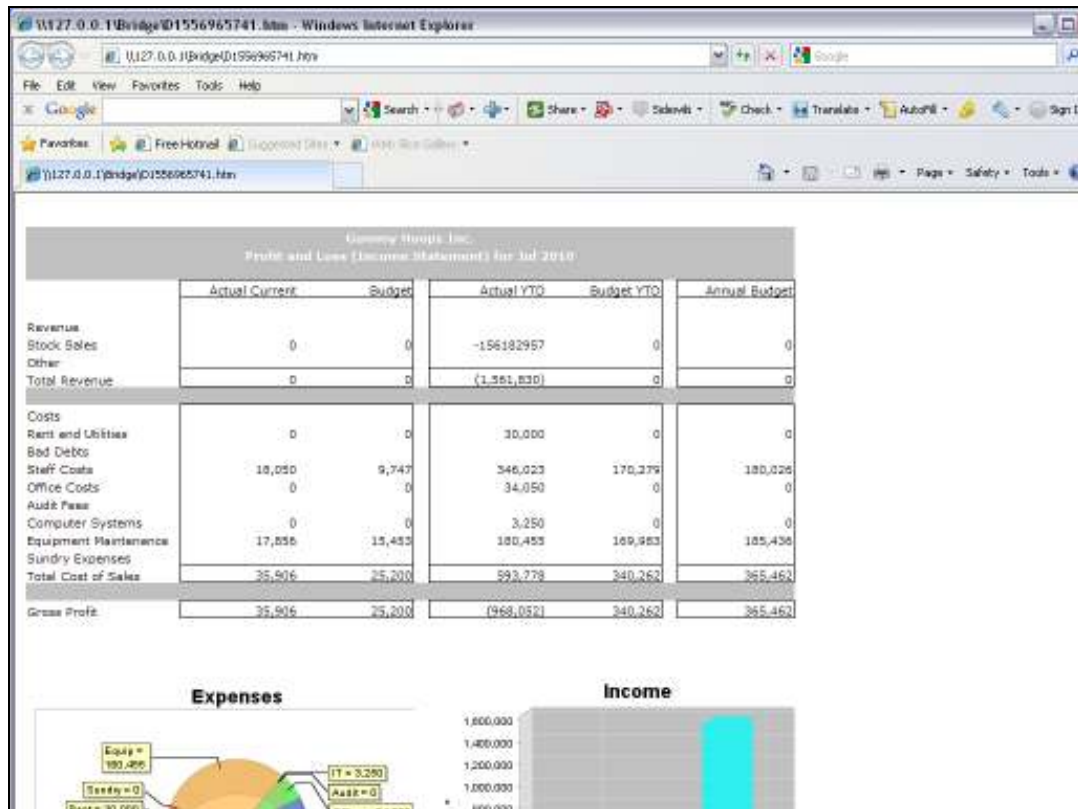
## Slide 1

Slide notes: When we look at this Tag Result, we can say that it is in raw format. In fact, this is an amount in Cents, and it is the same amount as displayed below, but in that case the amount is displayed using a 'Display Mask'.



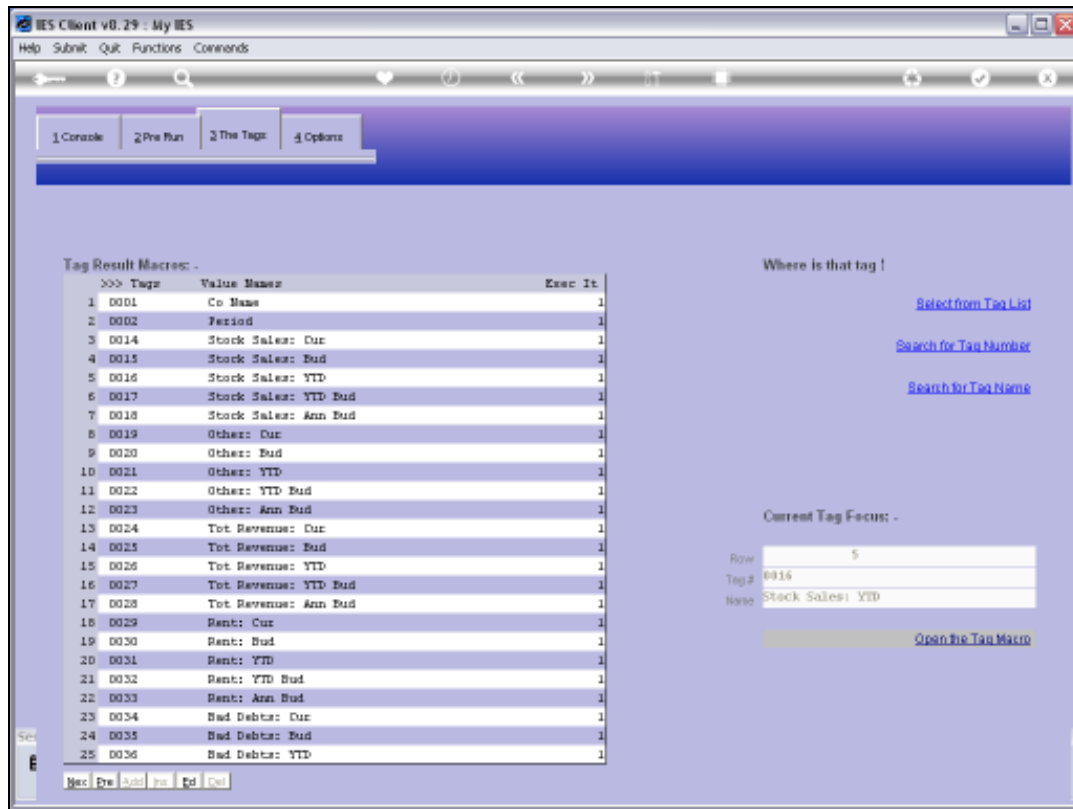
## Slide 2

Slide notes: So what is a Display Mask? In fact, it is a choice of presentation that displays or presents a Value in a selected way, and the same Value can potentially be displayed in many different ways.



Slide 3

Slide notes:



Slide 4

Slide notes:

IES Client v8.29 : My IES

Help Submit Quit Functions Commands

TEMPLATE 007: GL Numeric - Double Rule

Tag # 0016

Name Stock Sales YTD

Name #1 (Mandatory) Liact-ptd LEDGERs Actual Ptd

Name #2 (Optional)

Names Operation 1: no operation

1st Acct Selection Basis 1908 P&L POSITION

Flag Value to Select 20

Rule OR

2nd Account Selection 1908 P&L POSITION

Flag Value to Select 22

Sub Acct Lock

Tag Addressing relative

Period Mapping 2: tag maps to current year

Forex Exchange Rate 1: not used

Financial Scaling 1: no scaling

Rounding for Numbers 1: do not apply rounding

Display Mask

Alignment r: right justified

Result Width 21

Bold? NORMAL

Underline? NORMAL

☐ Sign Convert ?(+)

Tag Result ALWAYS RETURN A RESULT

Test Operator \*

Conditional Value

[Copy Template](#)

[Remove Template](#)

[Reset Look](#)

[Save](#)

Session Info: Terry is using IES

Desktop Application Wizard Tag Business Template BOFRIND-TAG-TEMPLATE10 2010/09/16 18:17:32

Slide 5

Slide notes: This is the Tag that produces the result we have just looked at.

IES Client v8.29 : My IES

Help Submit Quit Functions Commands

TEMPLATE 007: GL Numeric - Double Rule

Tag # 0016

Name Stock Sales YTD

Name #1 (Mandatory) Liact-pta LEDGERs Actual Ptd

Name #2 (Optional)

Names Operation 1: no operation

1st Acct Selection Basis 1908 P&L POSITION

Flag Value to Select 20

Rule OR

2nd Account Selection 1908 P&L POSITION

Flag Value to Select 22

Sub Acct Lock

Tag Addressing relative

Period Mapping 2: tag maps to current year

Forex Exchange Rate 1: not used

Financial Scaling 1: no scaling

Rounding for Numbers 1: do not apply rounding

Display Mask

Alignment 1: right justified

Result Width 21

Bold? NORMAL

Underline? NORMAL

☐ Sign Convert ?(+)

Tag Result ALWAYS RETURN A RESULT

Test Operator \*

Conditional Value

[Copy Template](#)

[Remove Template](#)

[Reset Look](#)

[Save](#)

Session Info: Terry is using IES

Desktop Application Wizard Tag Business Template BOFRIND-TAG-TEMPLATE10 2010/09/16 18:17:32

Slide 6

Slide notes: The Display Mask field currently has no setting, and that is why the Number is displayed in raw format.

Slide 7

Slide notes:

IES Client v8.29 : My IES

Help Submit Quit Functions Commands

TEMPLATE 007: GL Numeric - Double Rule

Tag # 0016

Name Stock Sales YTD

Name #1 (Mandatory) Liact-ptd LEDGERs Actual Ptd

Name #2 (Optional)

Names Operation 1: no operation

1st Acct Selection Basis 1908 P&L POSITION

Flag Value to Select 20

Rule OR

2nd Account Selection 1908 P&L POSITION

Flag Value to Select 22

Sub Acct Lock

Tag Addressing relative

Period Mapping 2: tag maps to current year

Forex Exchange Rate 1: not used

Financial Scaling 1: no scaling

Rounding for Numbers 1: do not apply rounding

Display Mask Lookup?

Alignment 1: Recent Values

Result Width NORMAL

Bold? NORMAL

Underline?

Sign Convert? (+/-)

Tag Result ALWAYS RETURN A RESULT

Test Operator

Conditional Value

[Copy Template](#)

[Remove Template](#)

[Reset Look](#)

[Save](#)

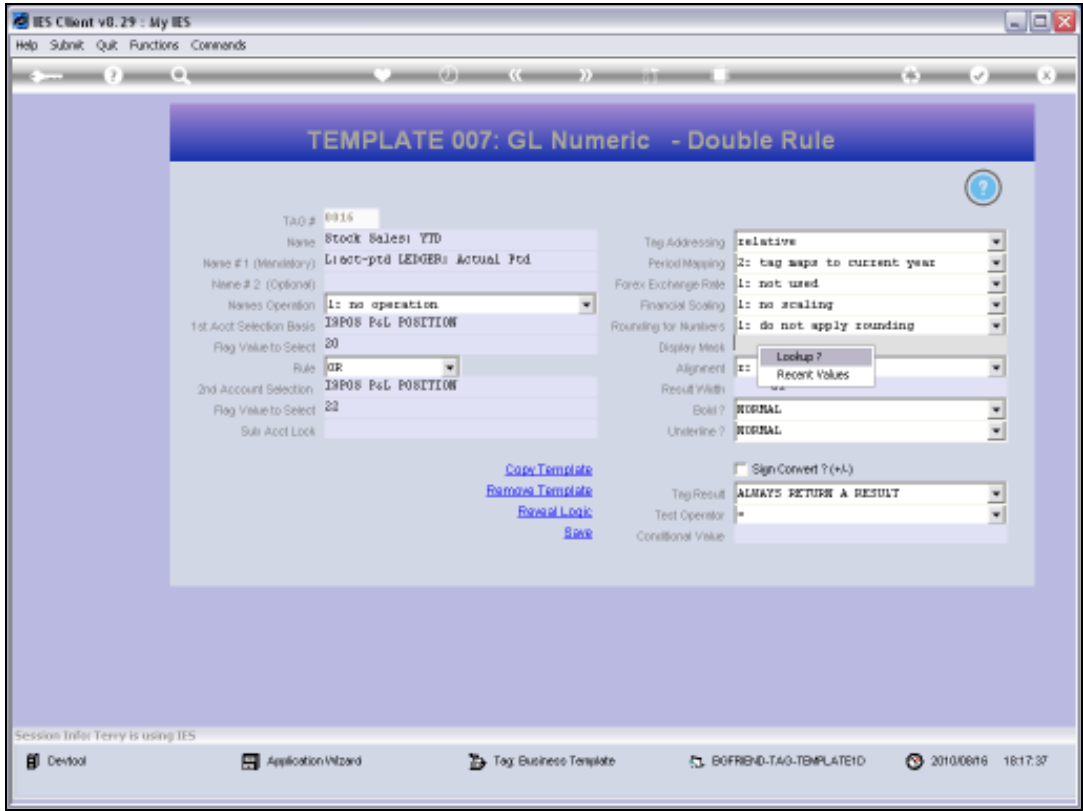
Session Info: Terry is using IES

Desktop Application Wizard Tag Business Template BOFRIND-TAG-TEMPLATE10 2010/09/25 18:17:36

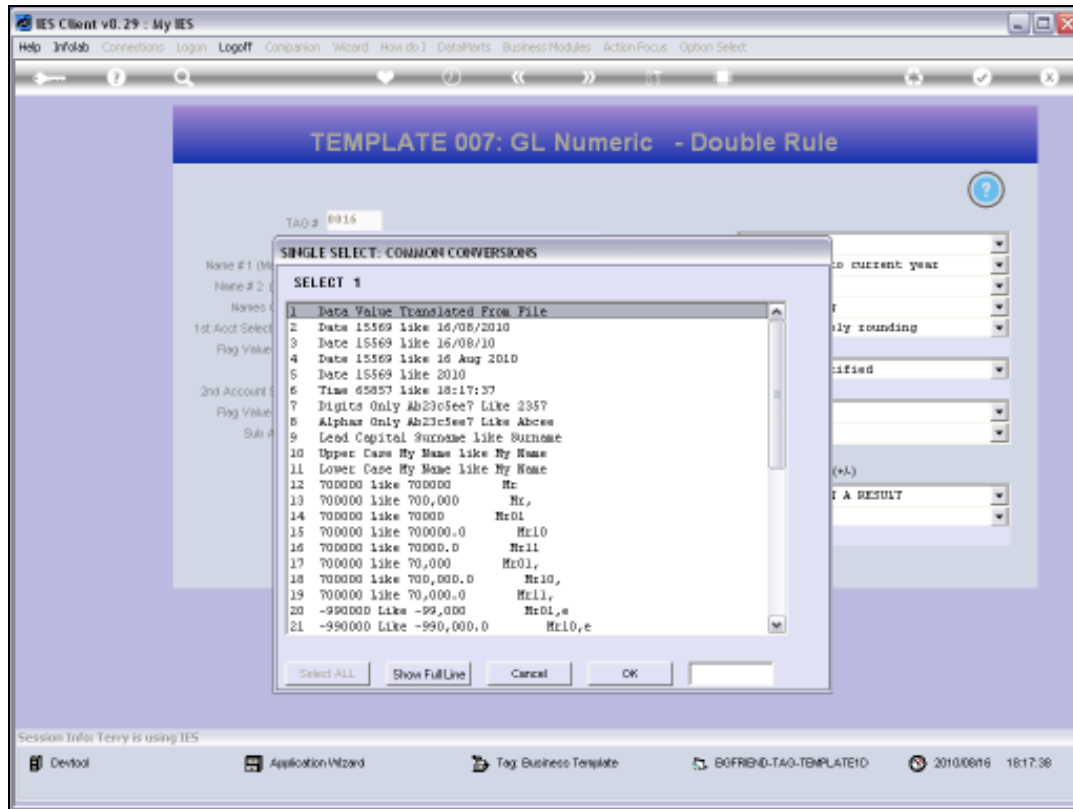
Slide 8

Slide notes:



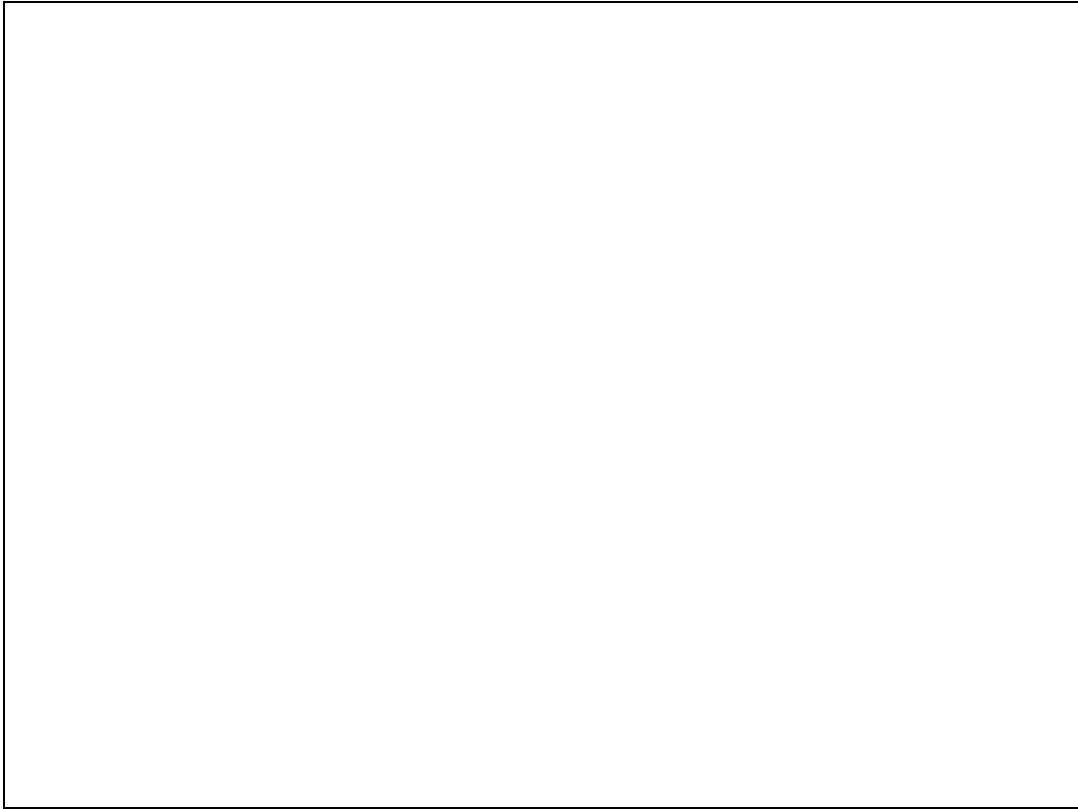


Slide 9  
Slide notes:



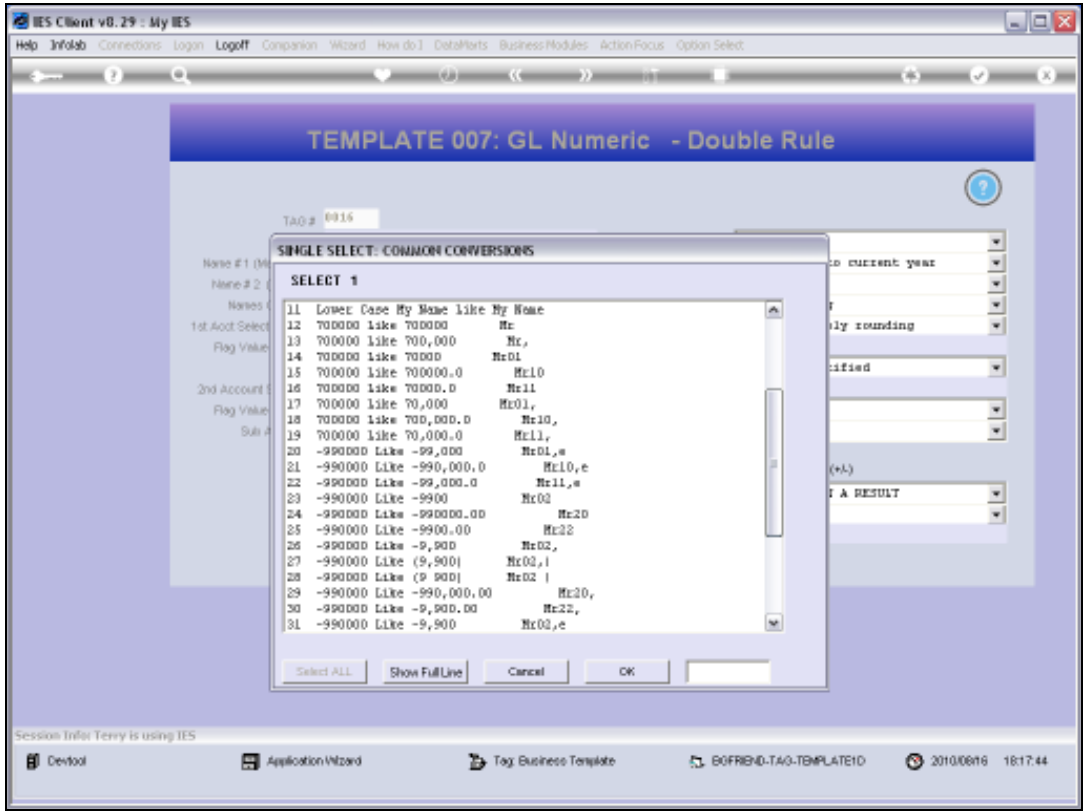
Slide 10

Slide notes: When we use the lookup here, we can see that there are multiple Display Masks to choose from. Some are for numbers, while others are used for Text, Dates or Time.



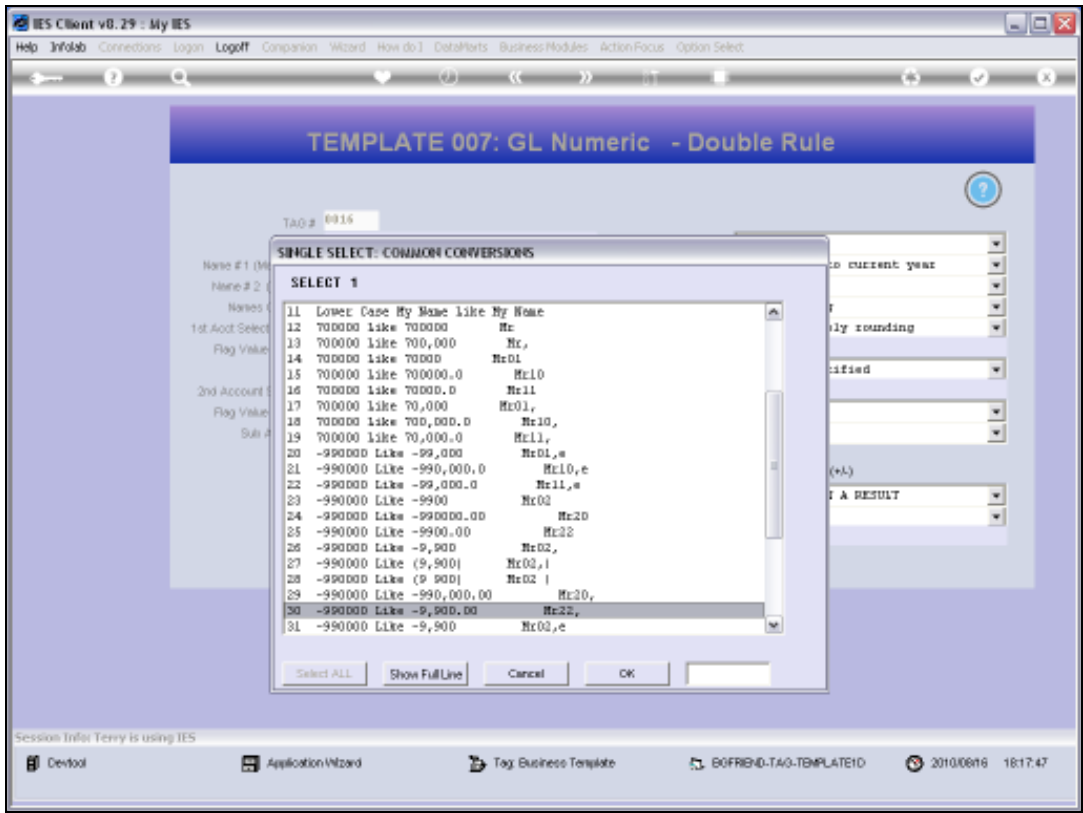
Slide 11

Slide notes:



Slide 12

Slide notes: We are now going to use the 'mr22,' mask, and this Display Mask will show the Value as Currency with 2 decimals as cents.



Slide 13  
Slide notes:

IES Client v8.29 : My IES

Help Submit Quit Functions Commands

TEMPLATE 007: GL Numeric - Double Rule

Tag # 0016

Name Stock Sales YTD

Name #1 (Mandatory) Liact-ptd LEDGERs Actual Ptd

Name #2 (Optional)

Names Operation 1: no operation

1st Acct Selection Basis 1908 P&L POSITION

Flag Value to Select 20

Rule OR

2nd Account Selection 1908 P&L POSITION

Flag Value to Select 22

Sub Acct Lock

Tag Addressing relative

Period Mapping 2: tag maps to current year

Forex Exchange Rate 1: not used

Financial Scaling 1: no scaling

Rounding for Numbers 1: do not apply rounding

Display Mask 9999

Alignment 1: right justified

Result Width 21

Bold? NORMAL

Underline? NORMAL

☐ Sign Convert ? (+/-)

Tag Result ALWAYS RETURN A RESULT

Test Operator \*

Conditional Value

[Copy Template](#)

[Remove Template](#)

[Reset Locks](#)

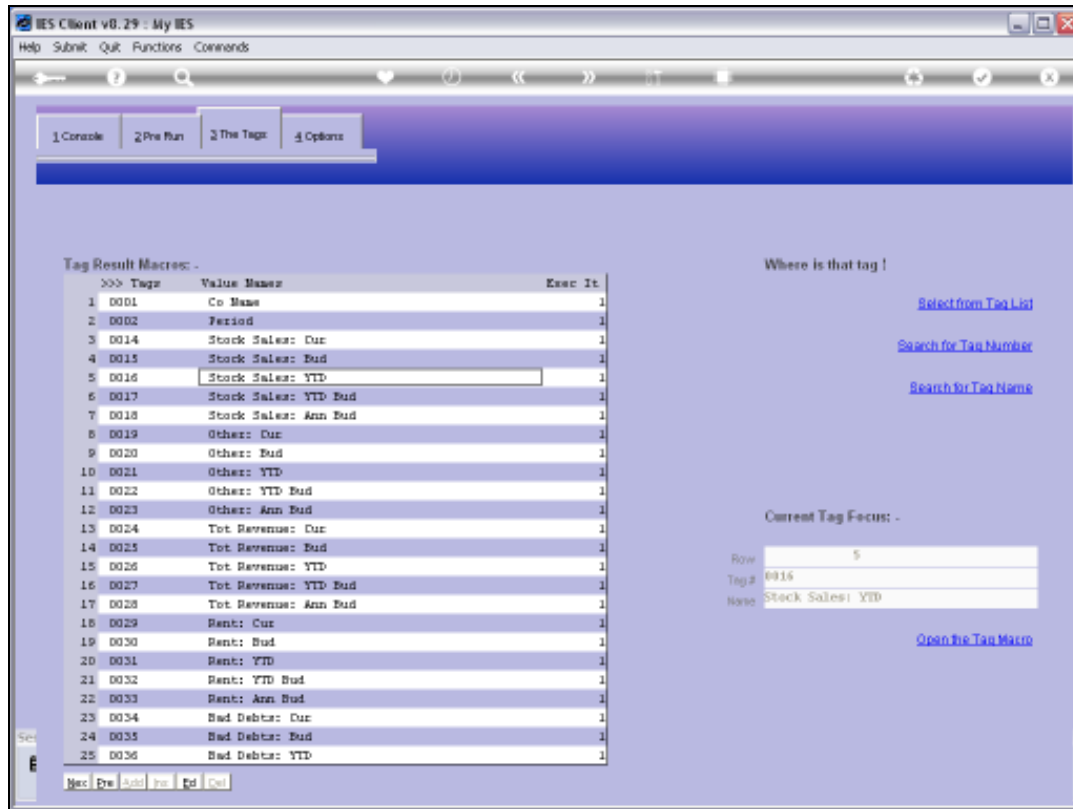
[Save](#)

Session Info: Terry is using IES

Desktop Application Wizard Tag Business Template BOFRIND-TAG-TEMPLATE10 2010/09/25 18:17:49

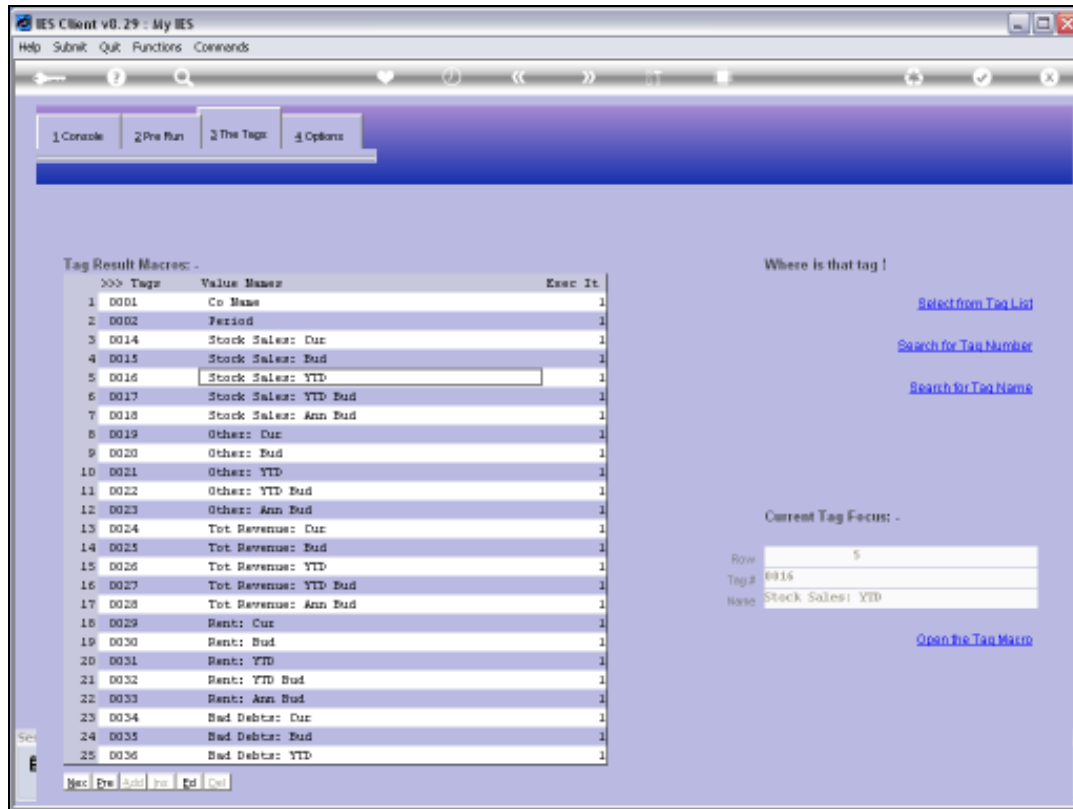
Slide 14

Slide notes:



Slide 15

Slide notes:



Slide 16

Slide notes:





Slide 17

Slide notes:



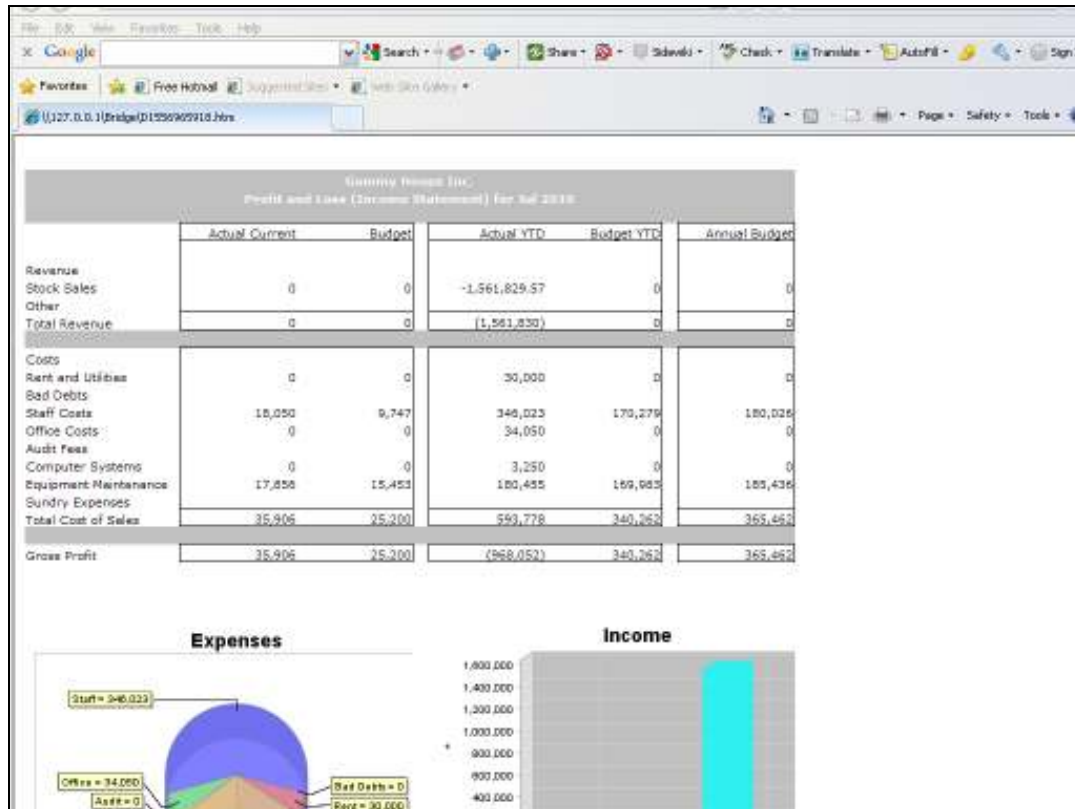
Slide 18

Slide notes:



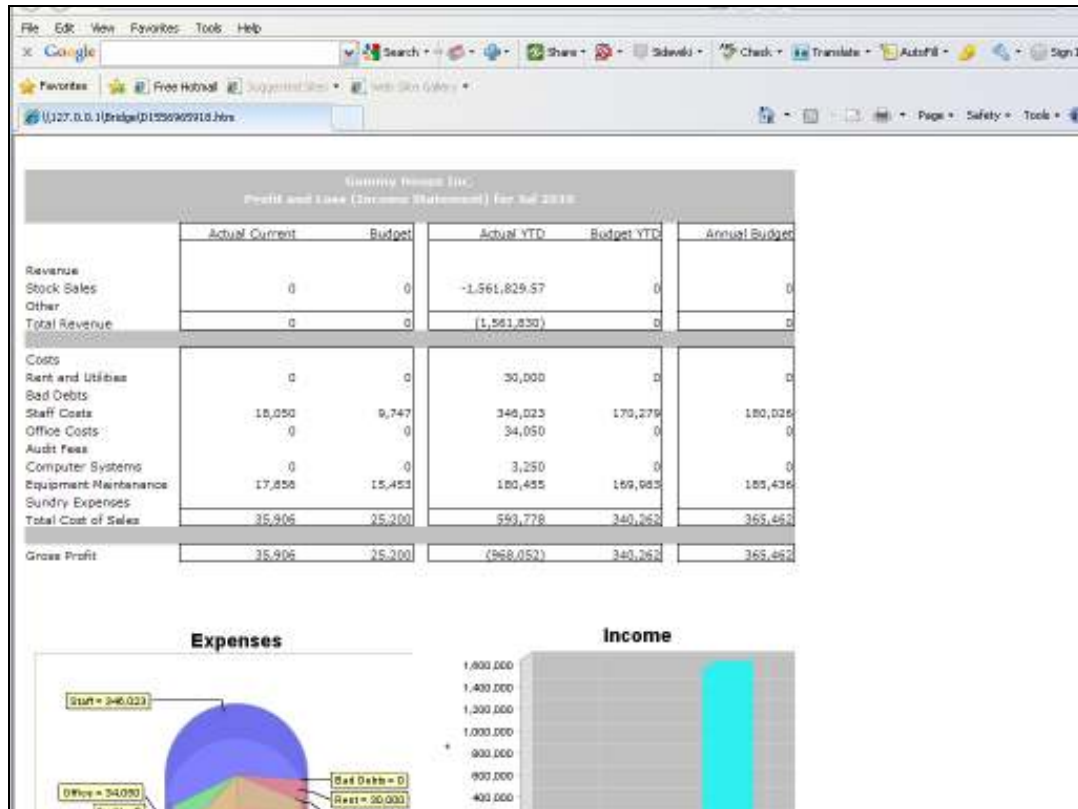
Slide 19

Slide notes:



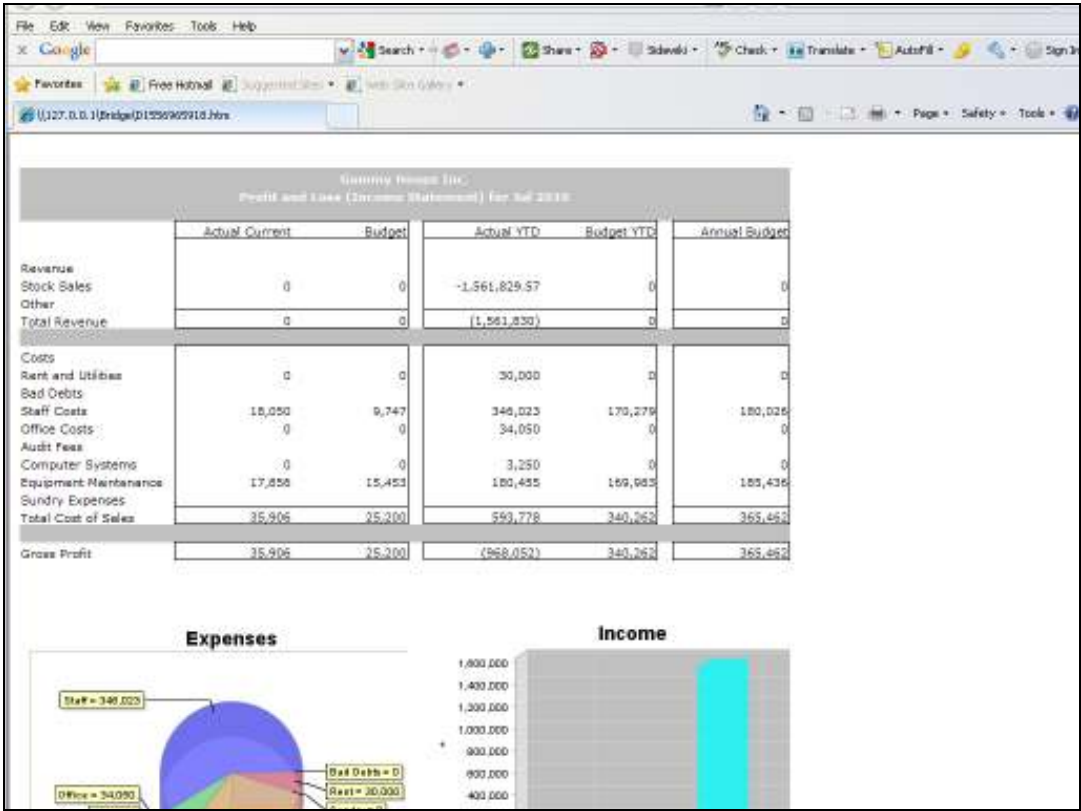
## Slide 20

Slide notes: Here is the effect. The Value is no longer raw, but looks like a Currency Amount. Still, it is not the same as the Value shown below, where the same Value is shown with yet another Display Mask. In fact, this is the most popular Mask and the system defaults to it. It shows Amounts without decimals, rounded to the nearest whole number, and negatives are shown in brackets.



Slide 21

Slide notes:



Slide 22  
Slide notes:

IES Client v8.29 : My IES

Help Submit Quit Functions Commands

TEMPLATE 007: GL Numeric - Double Rule

Tag # 0016

Name Stock Sales YTD

Name #1 (Mandatory) Liact-ptd LEDGERs Actual Ptd

Name #2 (Optional)

Names Operation 1: no operation

1st Acct Selection Basis 1908 P&L POSITION

Flag Value to Select 20

Rule OR

2nd Account Selection 1908 P&L POSITION

Flag Value to Select 22

Sub Acct Lock

Tag Addressing relative

Period Mapping 2: tag maps to current year

Forex Exchange Rate 1: not used

Financial Scaling 1: no scaling

Rounding for Numbers 1: do not apply rounding

Display Mask #123,

Alignment 1: right justified

Result Width 21

Bold? NORMAL

Underline? NORMAL

☐ Sign Convert ? (+/-)

Tag Result ALWAYS RETURN A RESULT

Test Operator \*

Conditional Value

[Copy Template](#)

[Remove Template](#)

[Reset Locks](#)

[Save](#)

Session Info: Terry is using IES

Desktop Application Wizard Tag Business Template BOFRIND-TAG-TEMPLATE10 2010/09/25 18:19:24

Slide 23

Slide notes:

IES Client v8.29 : My IES

Help Submit Quit Functions Commands

TEMPLATE 007: GL Numeric - Double Rule

Tag # 0016

Name STOCK Sales YTD

Name #1 (Mandatory) Liab-PRD LEDGERs Actual Ptd

Name #2 (Optional)

Names Operation 1: no operation

1st Acct Selection Basis 1908 P&L POSITION

Flag Value to Select 20

Rule OR

2nd Account Selection 1908 P&L POSITION

Flag Value to Select 22

Sub Acct Lock

Tag Addressing relative

Period Mapping 2: tag maps to current year

Forex Exchange Rate 1: not used

Financial Scaling 1: no scaling

Rounding for Numbers 1: do not apply rounding

Display Mask 9999

Alignment 1: right

Result Width 21

Bold? NORMAL

Underline? NORMAL

Sign Convert? (+/-)

Tag Result ALWAYS RETURN A RESULT

Test Operator \*

Conditional Value

[Copy Template](#)

[Remove Template](#)

[Reset Look](#)

[Save](#)

Session Info: Terry is using IES

Desktop Application Wizard Tag Business Template BOFRIND-TAG-TEMPLATE10 2010/09/26 18:19:26

Slide 24

Slide notes:



IES Client v8.29 : My IES

Help Submit Quit Functions Commands

TEMPLATE 007: GL Numeric - Double Rule

Tag # 0016

Name Stock Sales YTD

Name #1 (Mandatory) Liact-ptd LEDGERs Actual Ptd

Name #2 (Optional)

Names Operation 1: no operation

1st Acct Selection Basis 1908 P&L POSITION

Flag Value to Select 20

Rule OR

2nd Account Selection 1908 P&L POSITION

Flag Value to Select 22

Sub Acct Lock

Tag Addressing relative

Period Mapping 2: tag maps to current year

Forex Exchange Rate 1: not used

Financial Scaling 1: no scaling

Rounding for Numbers 1: do not apply rounding

Display Mask 9999

Alignment 1: right

Result Width 21

Bold? NORMAL

Underline? NORMAL

Sign Convert? (+/-)

Tag Result ALWAYS RETURN A RESULT

Test Operator \*

Conditional Value

[Copy Template](#)

[Remove Template](#)

[Reset Look](#)

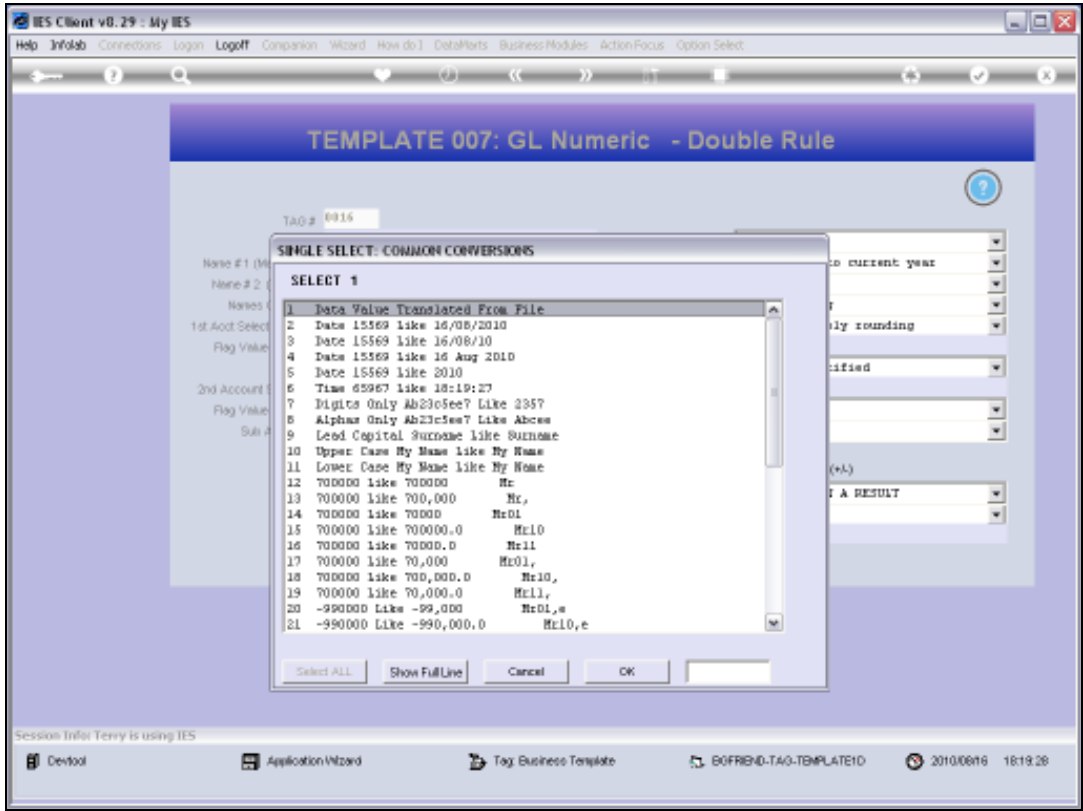
[Save](#)

Session Info: Terry is using IES

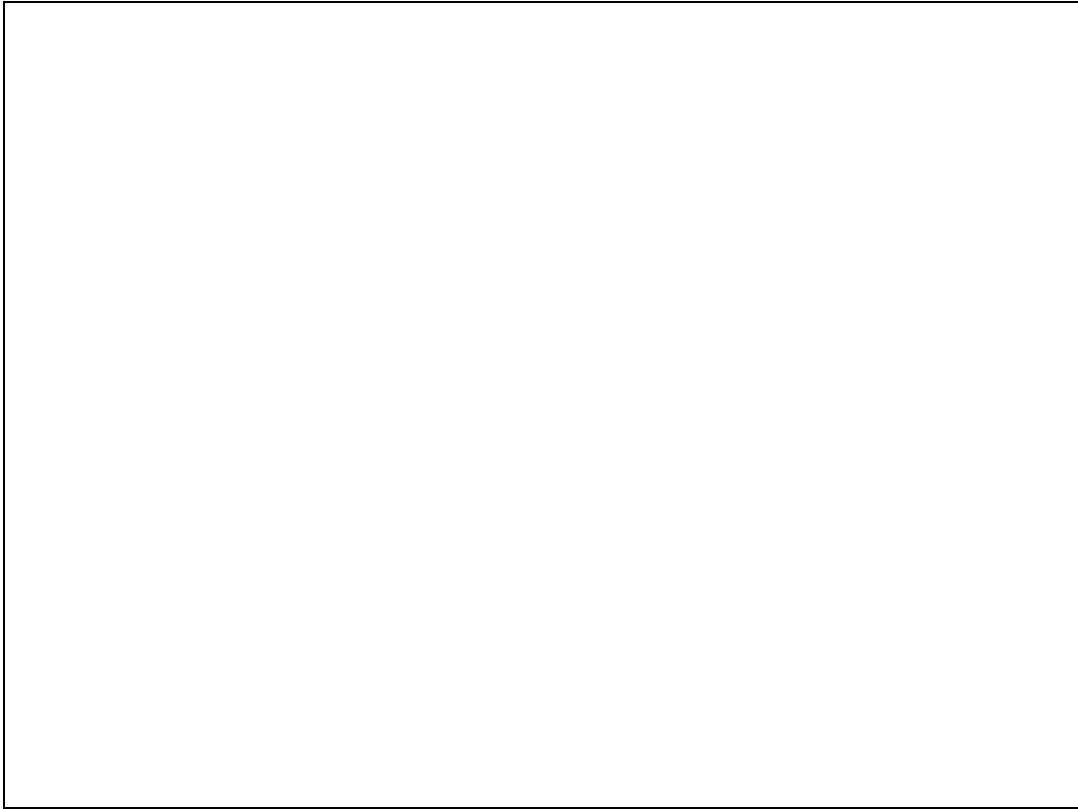
Desktop Application Wizard Tag Business Template BOFRIND-TAG-TEMPLATE10 2010/09/25 18:19:27

Slide 25

Slide notes:

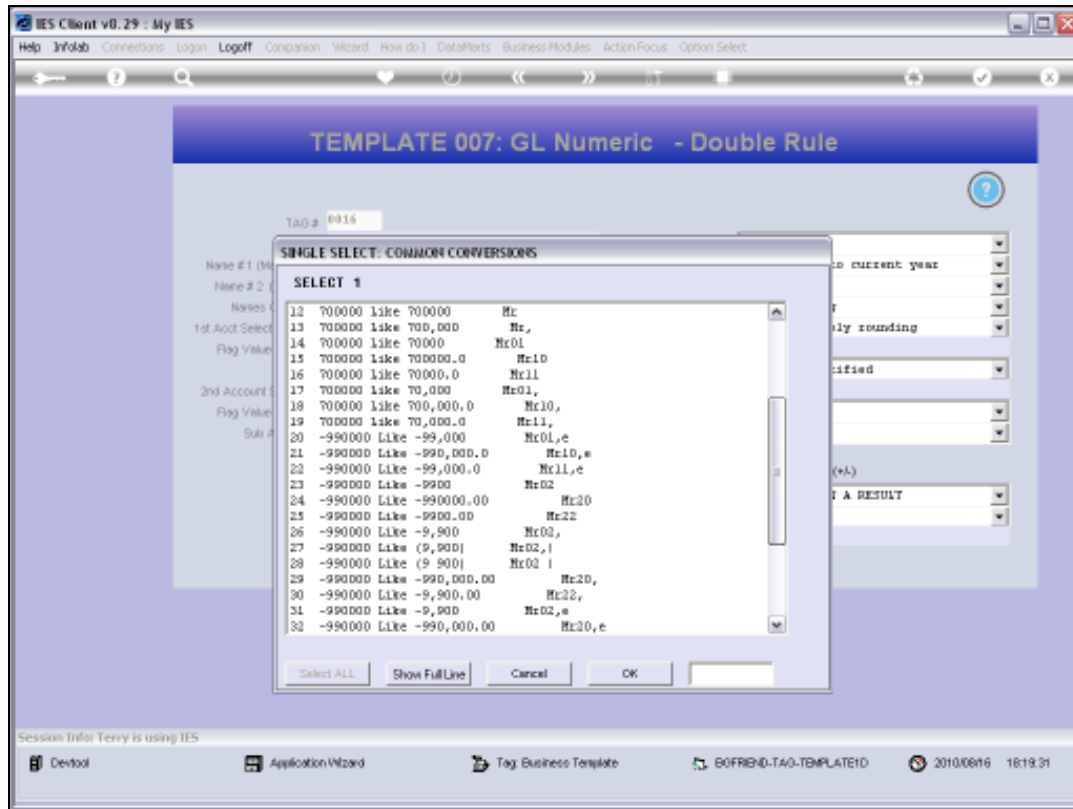


Slide 26  
Slide notes:



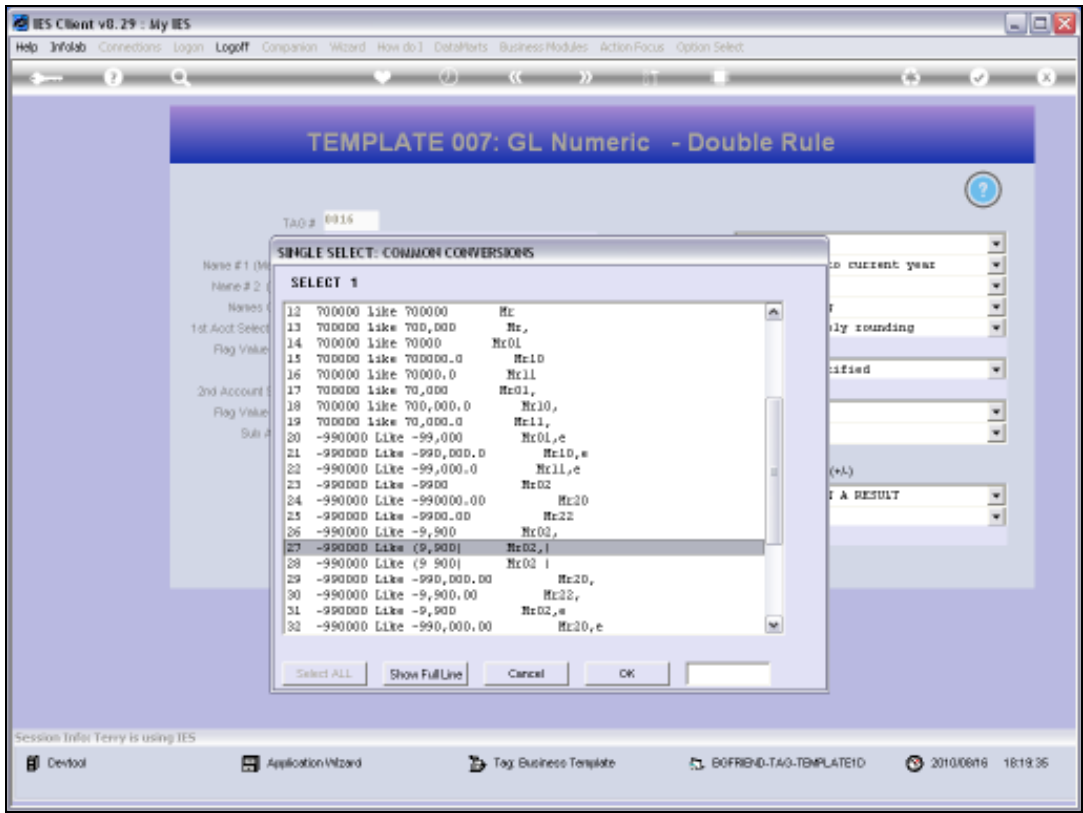
Slide 27

Slide notes:



Slide 28

Slide notes: This time, we will select the same Display Mask as is used with the other Value that we compared with on the Report.



Slide 29  
Slide notes:

IES Client v8.29 : My IES

Help Submit Quit Functions Commands

TEMPLATE 007: GL Numeric - Double Rule

Tag # 0016

Name Stock Sales YTD

Name #1 (Mandatory) Liact-ptd LEDGERs Actual Ptd

Name #2 (Optional)

Names Operation 1: no operation

1st Acct Selection Basis 1908 P&L POSITION

Flag Value to Select 20

Rule OR

2nd Account Selection 1908 P&L POSITION

Flag Value to Select 22

Sub Acct Lock

Tag Addressing relative

Period Mapping 2: tag maps to current year

Forex Exchange Rate 1: not used

Financial Scaling 1: no scaling

Rounding for Numbers 1: do not apply rounding

Display Mask #002.00

Alignment 1: right justified

Result Width 21

Bold? NORMAL

Underline? NORMAL

☐ Sign Convert ? (+/-)

Tag Result ALWAYS RETURN A RESULT

Test Operator \*

Conditional Value

[Copy Template](#)

[Remove Template](#)

[Reset Locks](#)

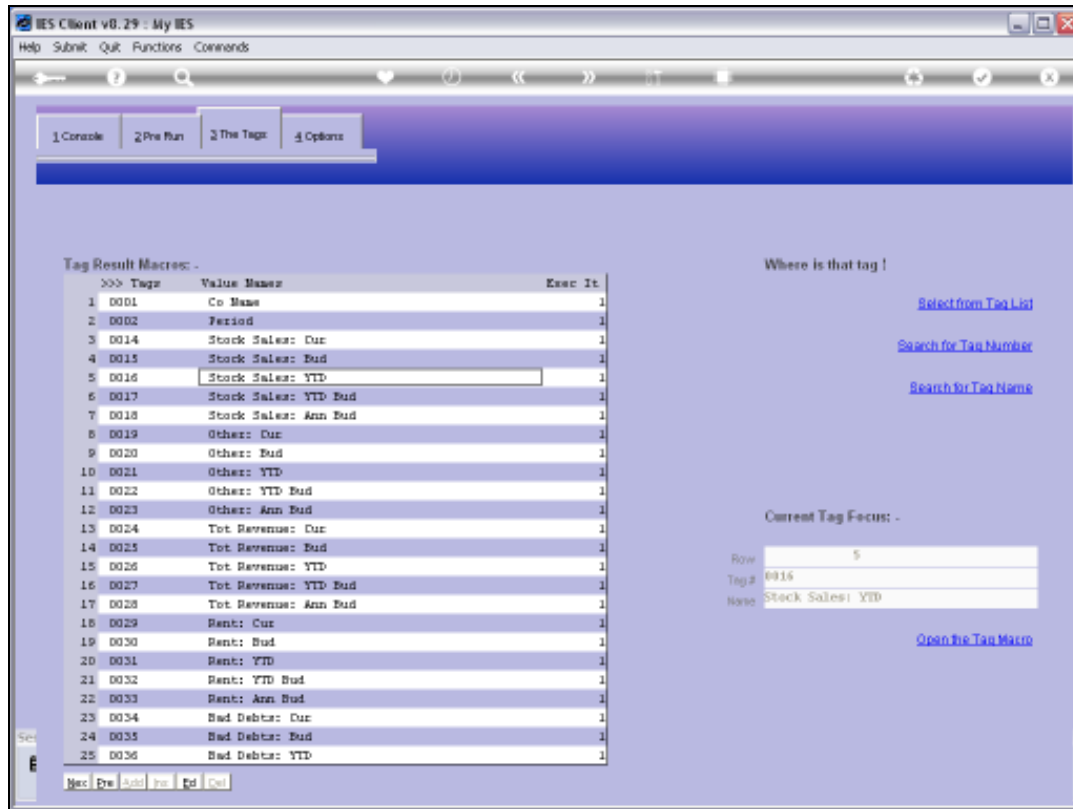
[Save](#)

Session Info: Terry is using IES

Desktop Application Wizard Tag Business Template BOFRIND-TAG-TEMPLATE10 2010/09/25 18:19:38

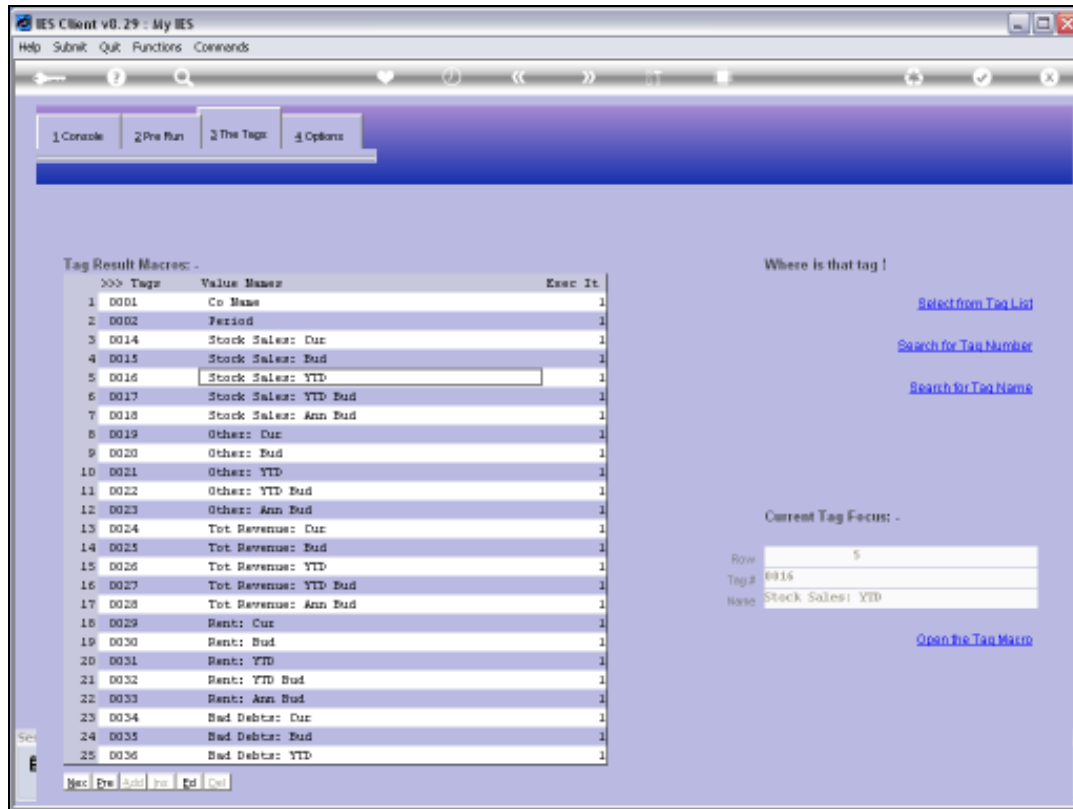
Slide 30

Slide notes:



Slide 31

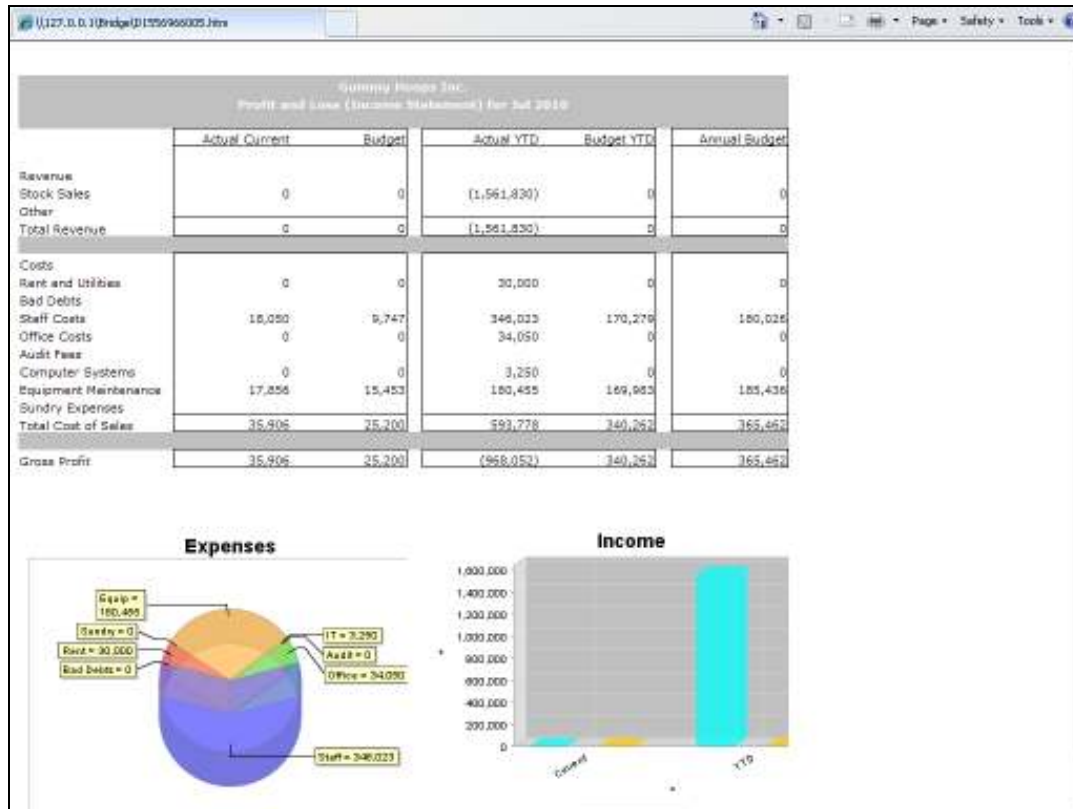
Slide notes:



Slide 32

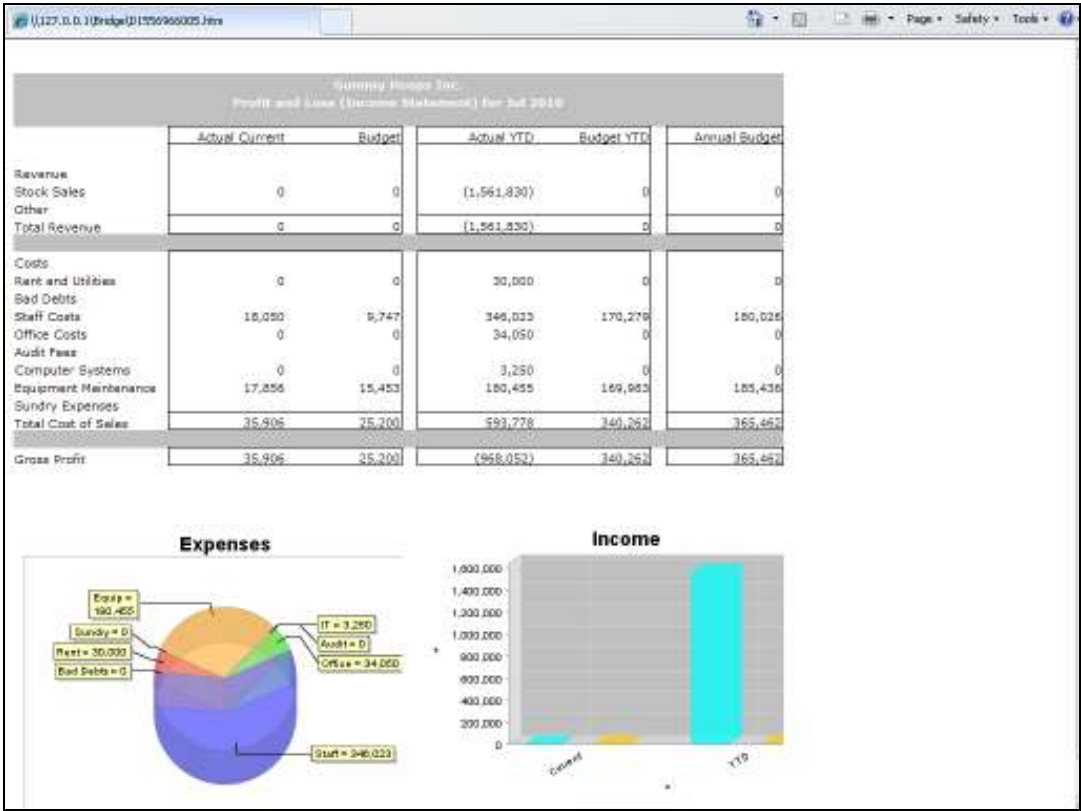
Slide notes:



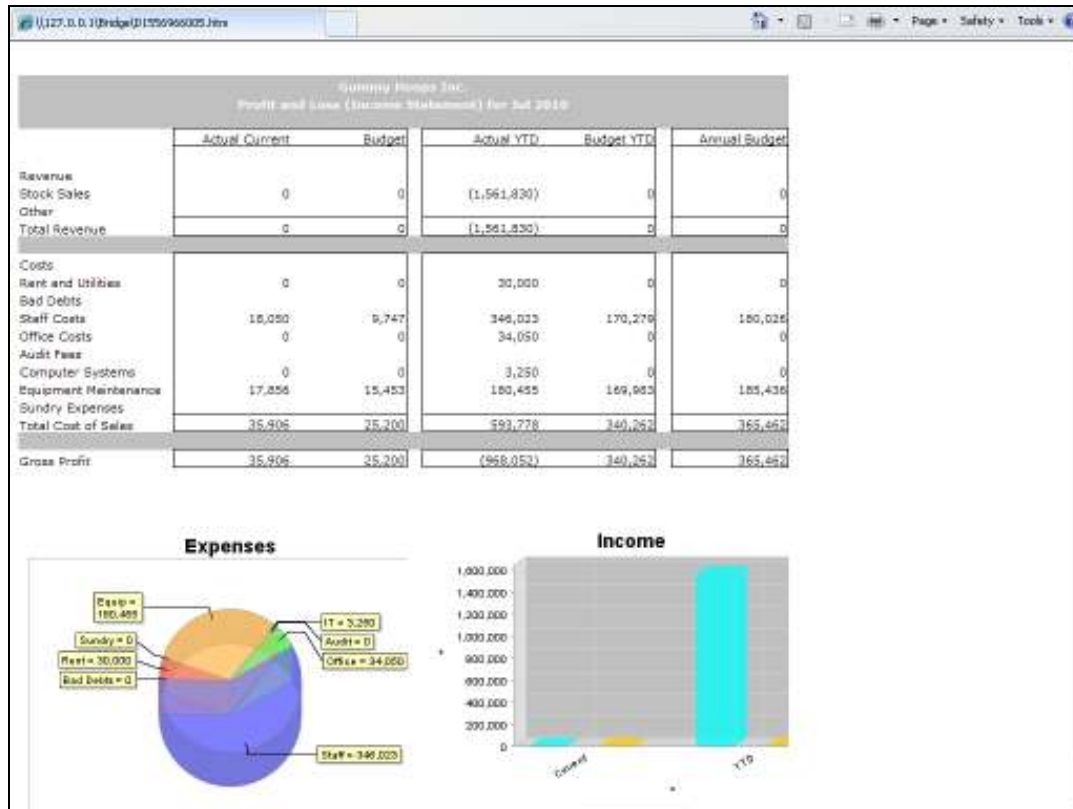


Slide 33

Slide notes: And here is the effect. Those 2 Values now look the same.



Slide 34  
Slide notes:



## Slide 35

Slide notes: We can apply our own choice of Display Mask on a Report or for selected Tags. Usually we will apply the same standard for numbers for an entire Report, but there are also Display Masks for Text, Dates, Time and other Value types.