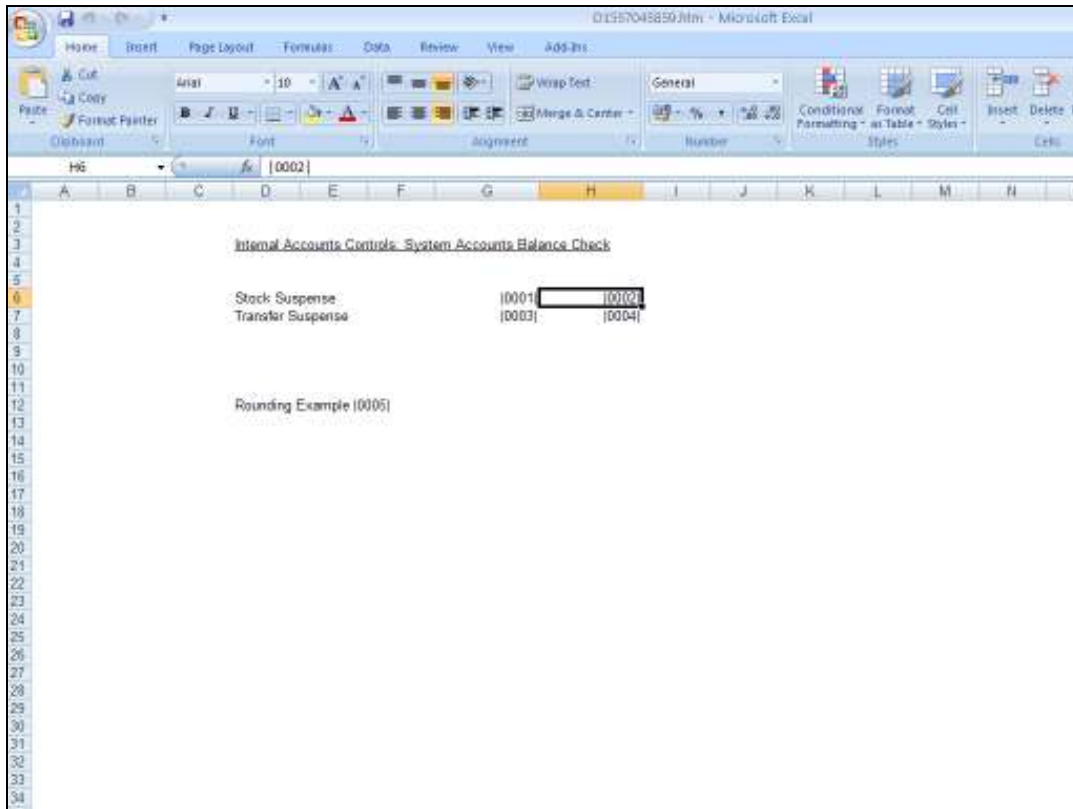


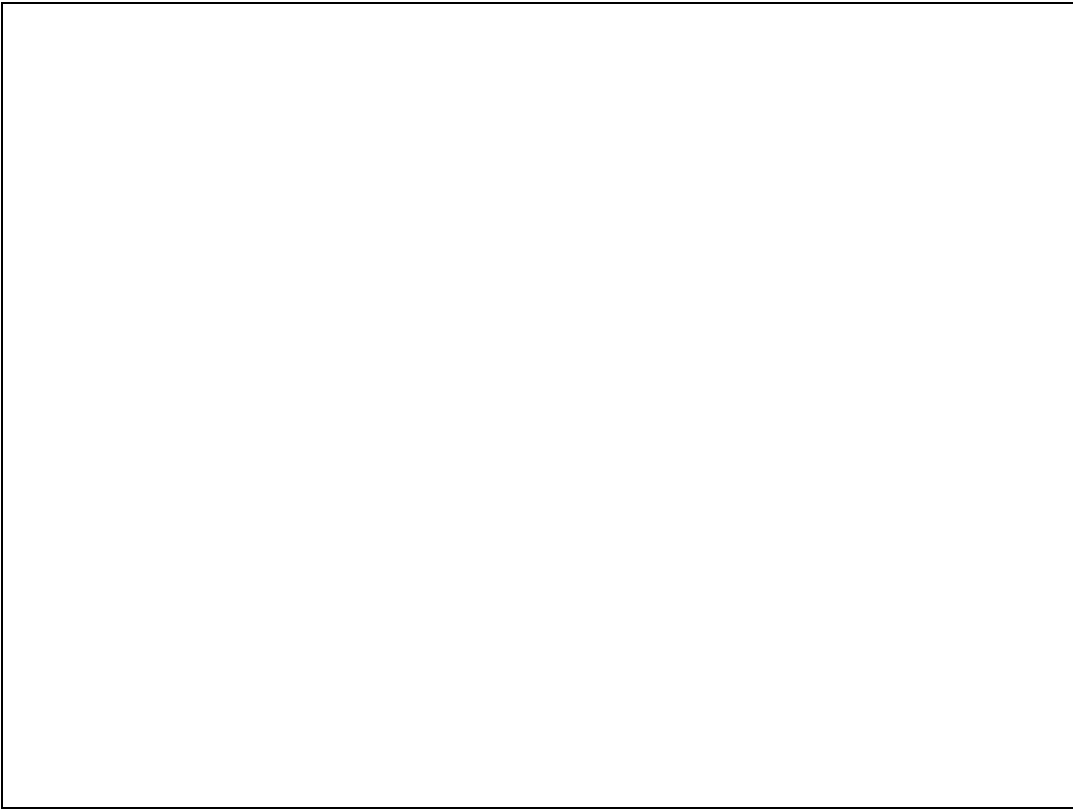
Slide 1

Slide notes: The allowed width of a Tag Result is determined by 2 settings. In the 1st instance, we work with a selected width in the Layout, because most results will appear within a defined cell in a table.



Slide 2

Slide notes: In the case of using a spreadsheet Editor for the layout, then any Tag Result appears in a spreadsheet cell. This cell has width properties that can be changed by widening the column, merging cells, or other. But probably, the HTML generated for this layout will lock the cell width to the size indicated here, and that means that a bigger Value than the current cell width will not show fully, and will be chopped off on the left or the right, depending on alignment.

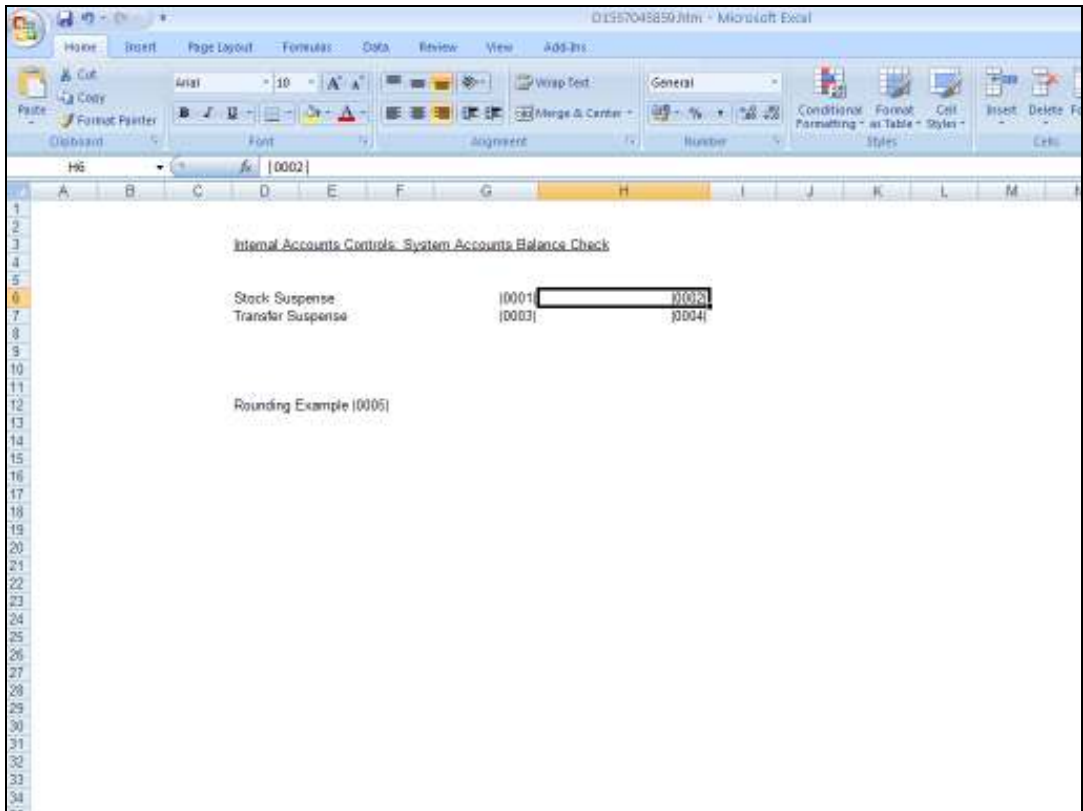


Slide 3

Slide notes:

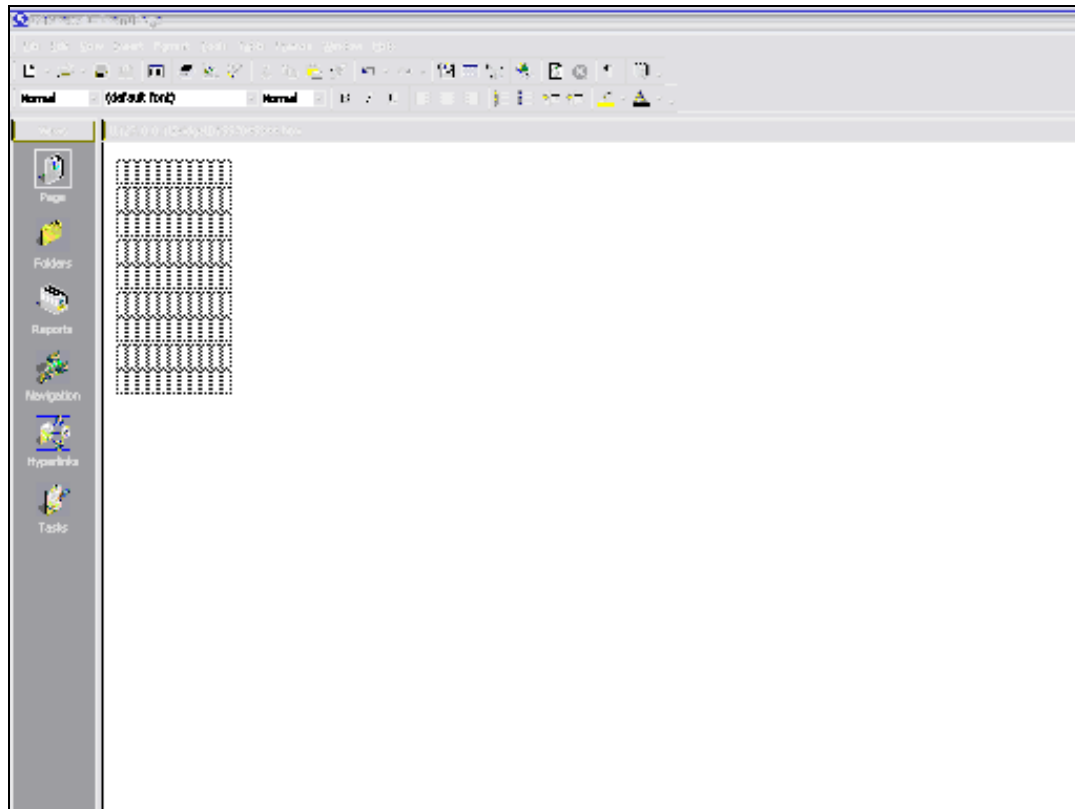


Page 4 of 22



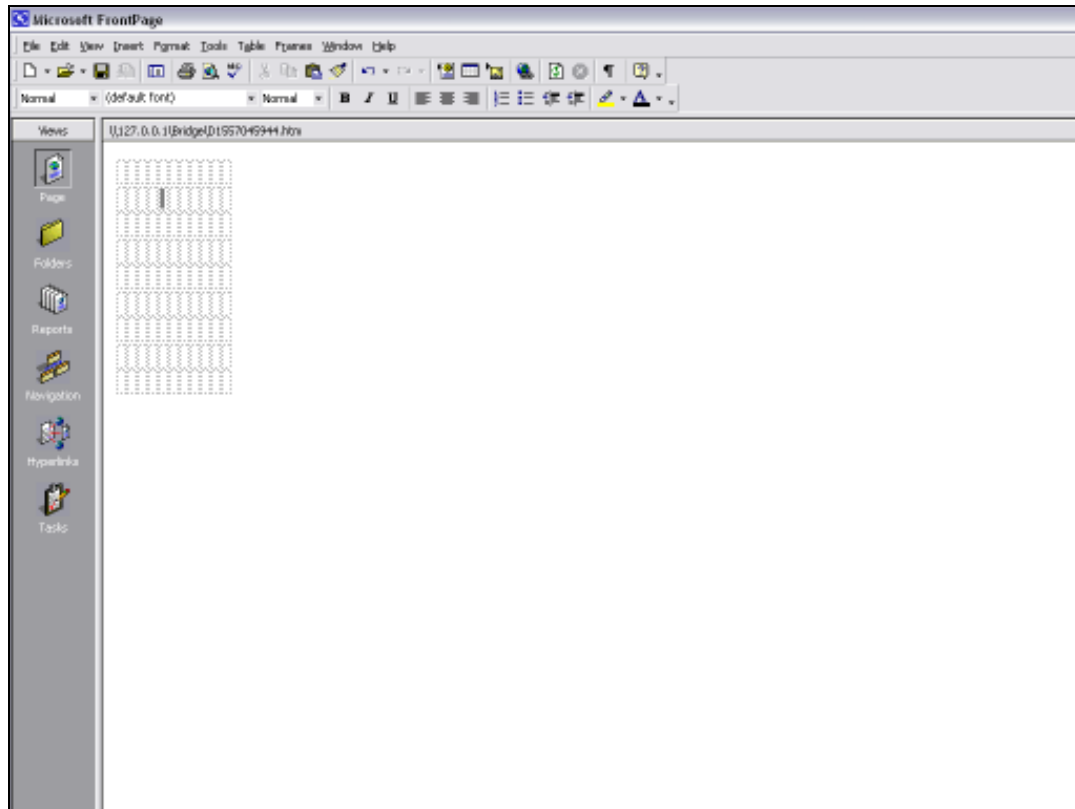
Slide 5

Slide notes:



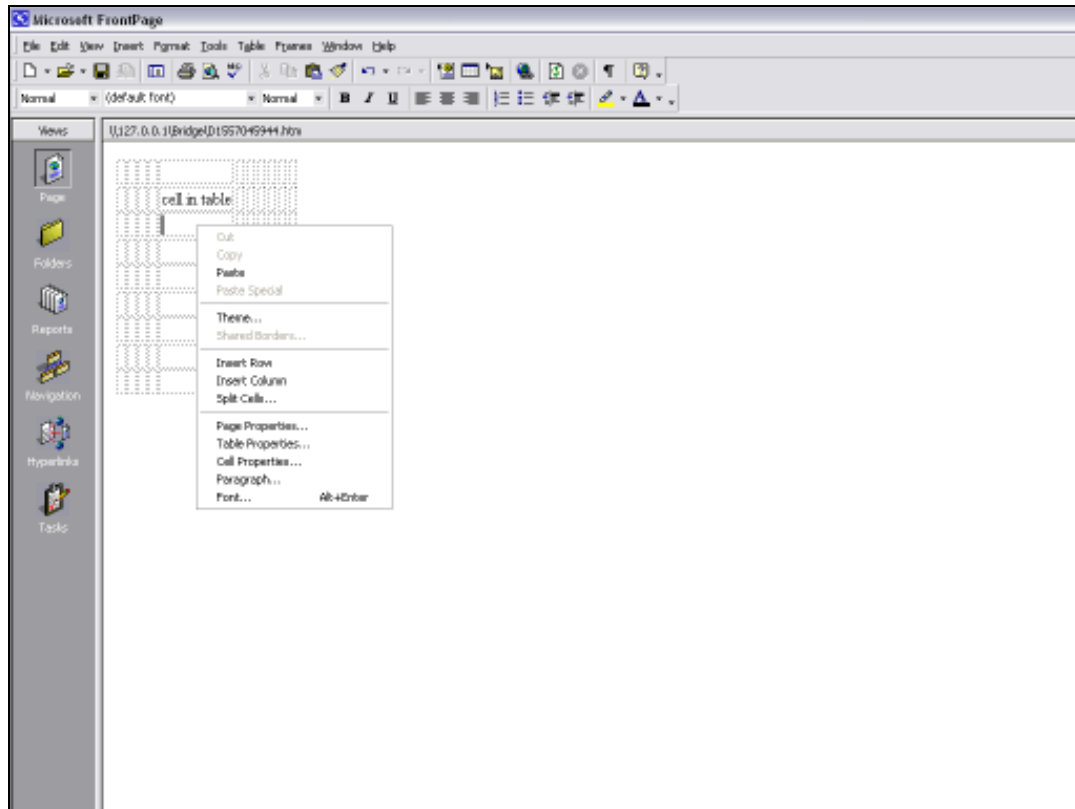
Slide 6

Slide notes: Next, in the case of using a native HTML Editor for the Layout, as in the case of this example where we are using Front Page, then we commonly use Tables to design our Layout. And in the case of a Table, we also use cells.



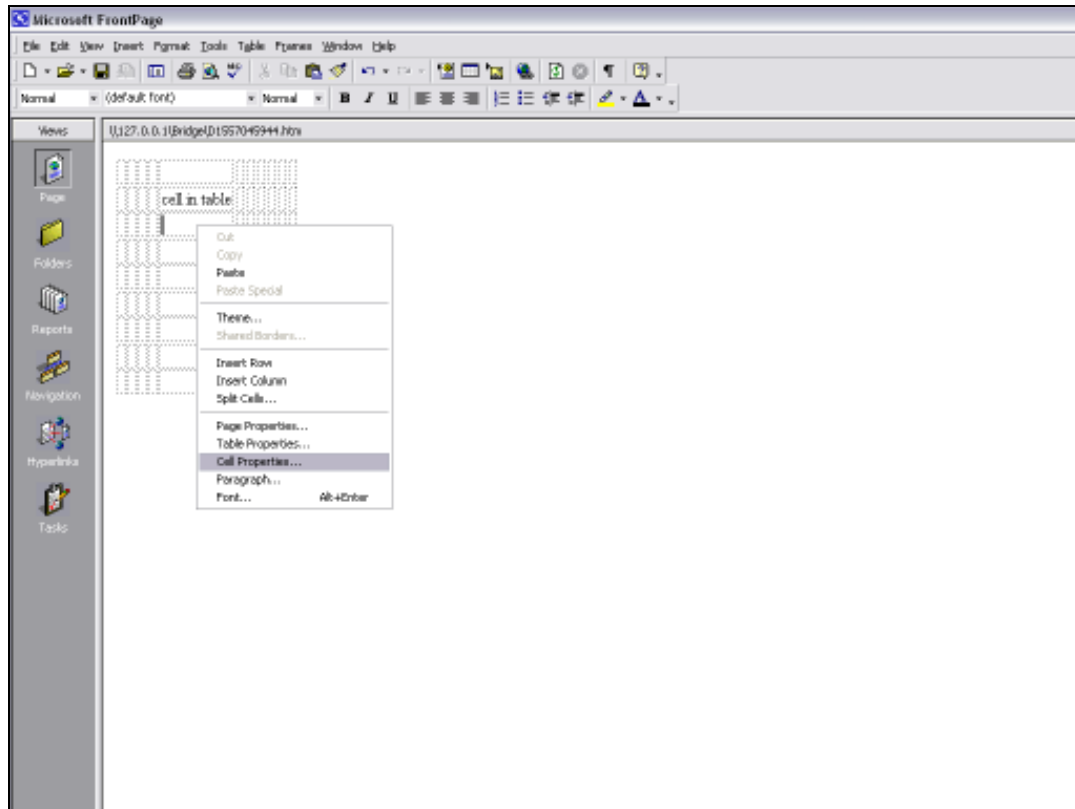
Slide 7

Slide notes: In this case, we can also define the properties of the cell; change its width, etc. But in this case, the cell size will not usually be locked, and a bigger Value may still show by wrapping onto multiple lines. Still, when we do not want a Value to wrap onto multiple lines, then we should ensure the required width is available.



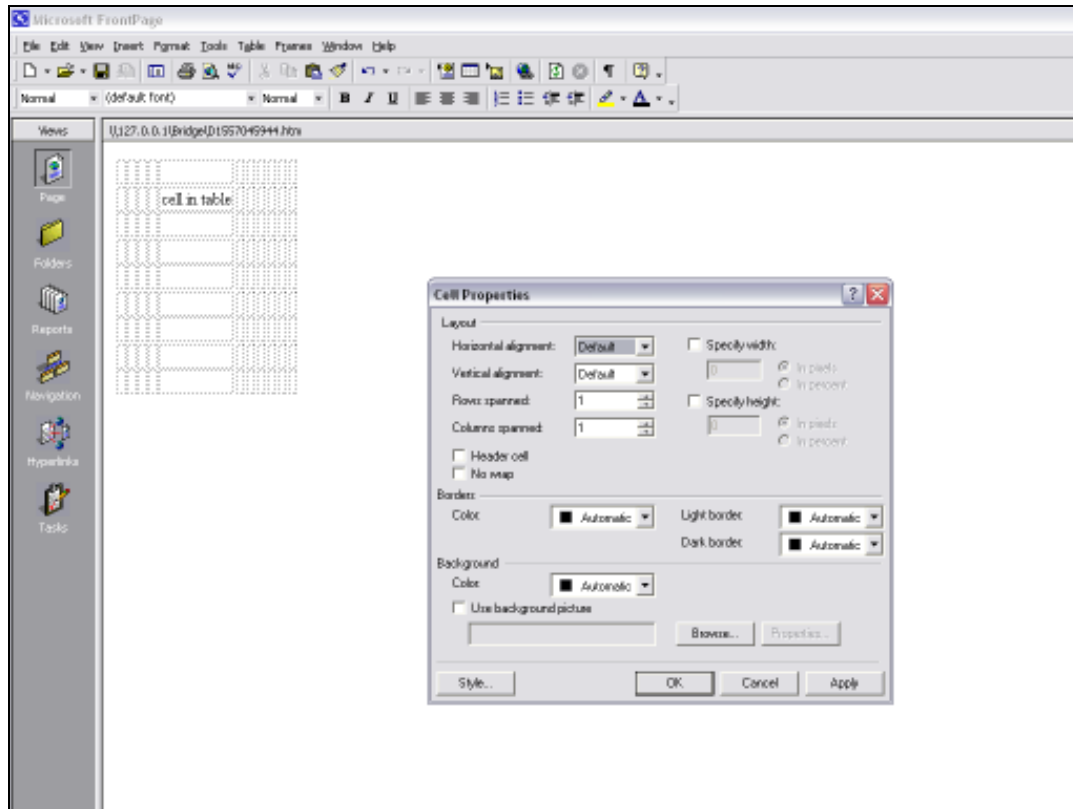
Slide 8

Slide notes:



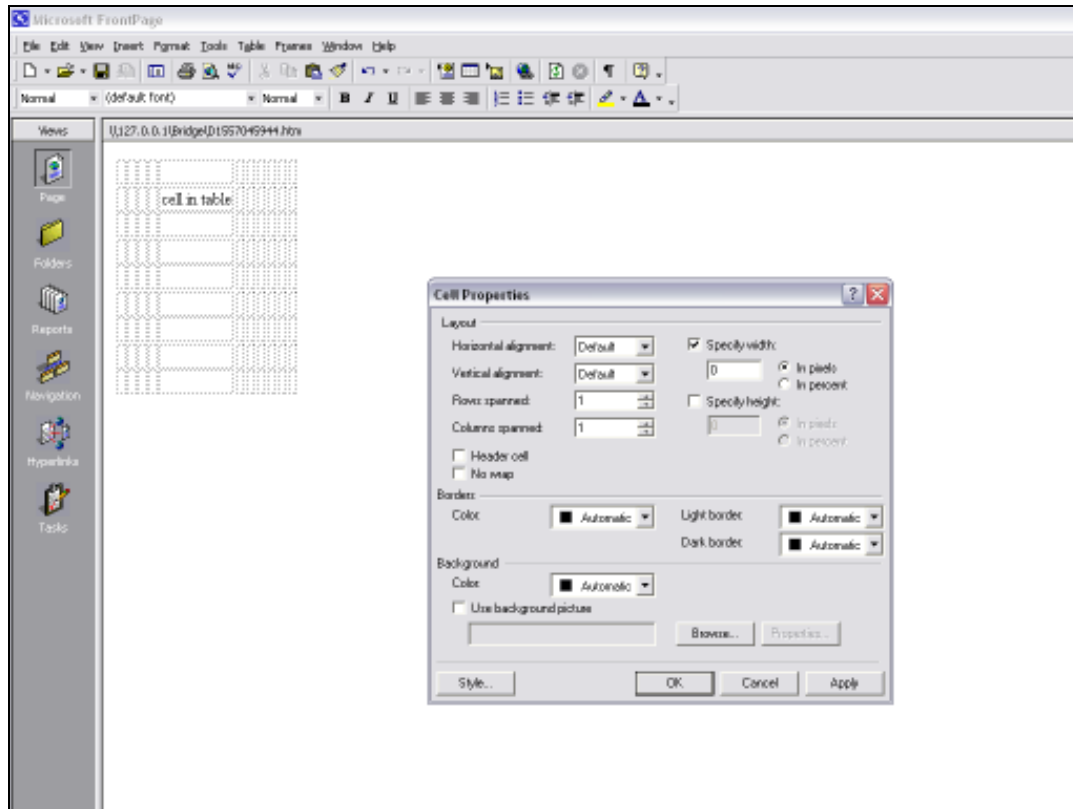
Slide 9

Slide notes:



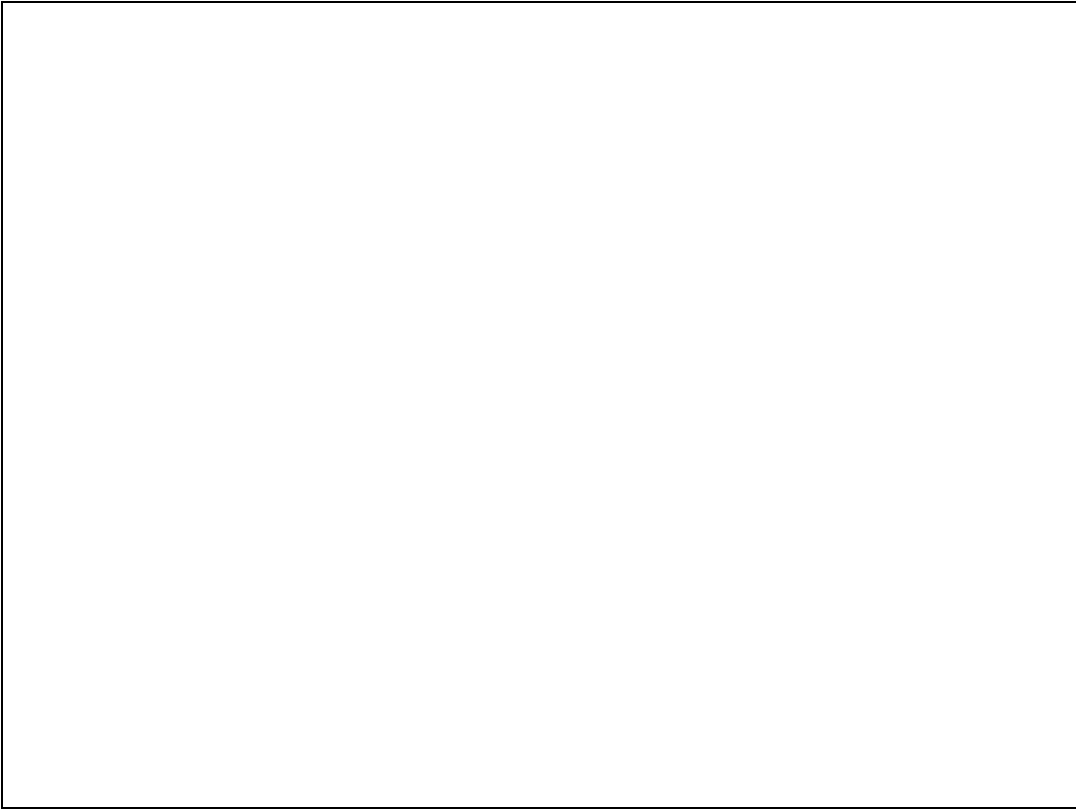
Slide 10

Slide notes:



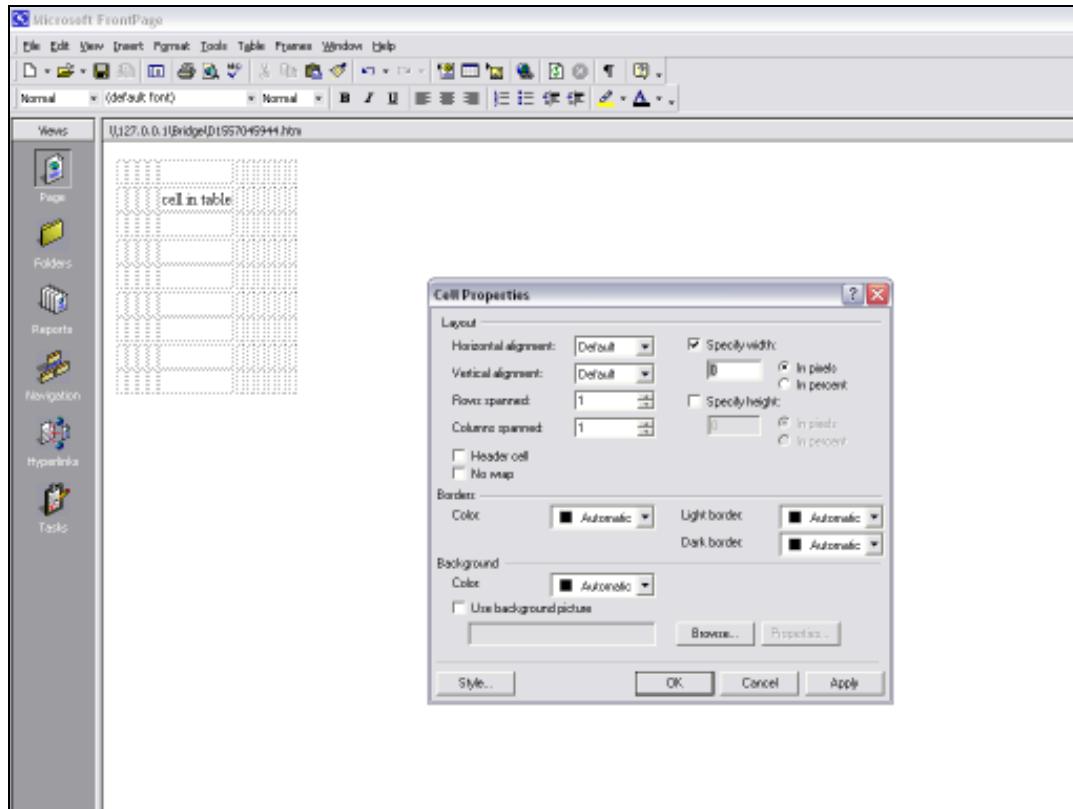
Slide 11

Slide notes:



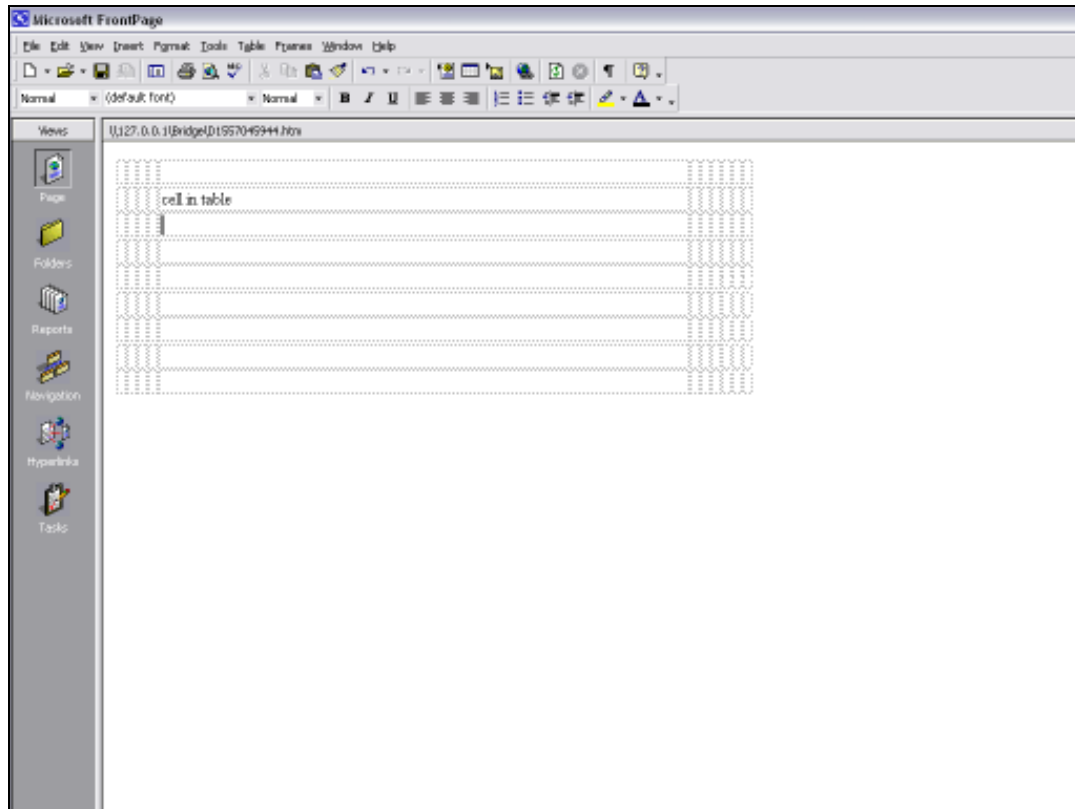
Slide 12

Slide notes:



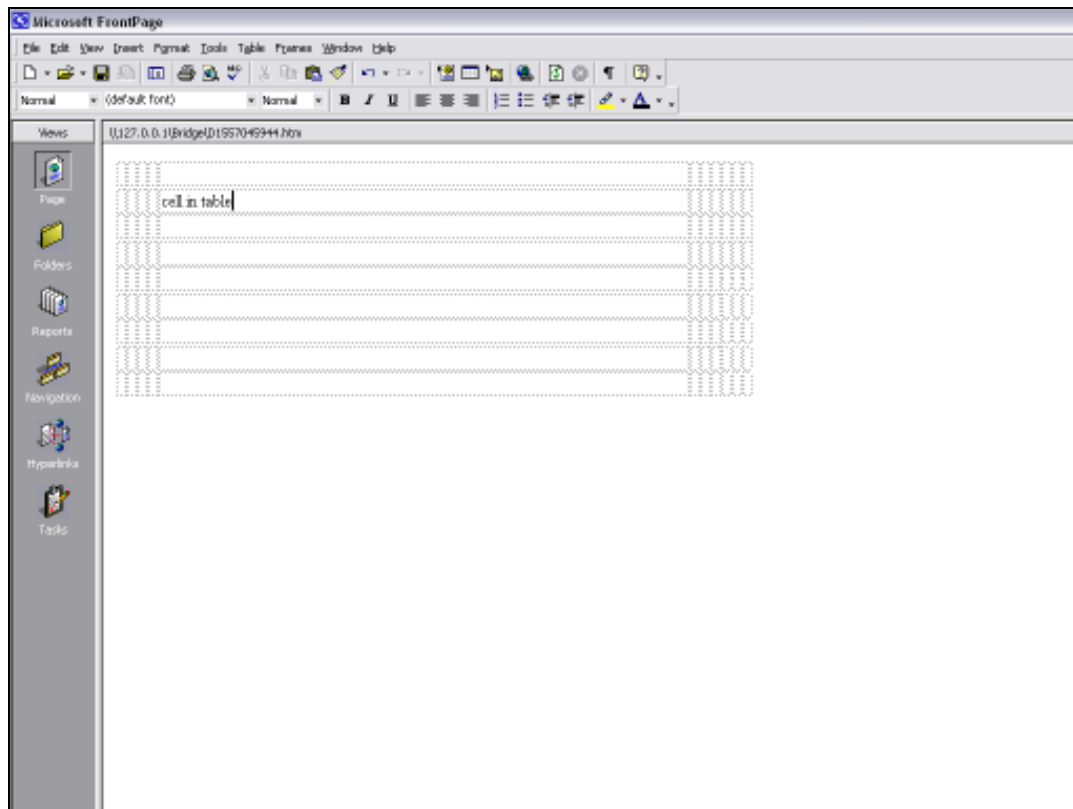
Slide 13

Slide notes:



Slide 14

Slide notes:



Slide 15

Slide notes:

TEMPLATE 002: GL Numeric - Single Rule

TAG # 0003
 Name Transfer Suspense Current

Name #1 (Mandatory) Liabilities LEDGER Actual
 Name #2 (Optional)
 Name Operation 1: no operation
 Acct Selection Basis KEY9 EMUNERATE SPECIFIC ACCOUNT NUMBER
 Flag Value to Select 10000005
 Sub Acct Lock

Tag Addressing relative
 Period Mapping 2: tag maps to current year
 Forex Exchange Rate 1: not used
 Financial Scaling 1: no scaling
 Rounding for Numbers 1: do not apply rounding
 Display Mask #102,1
 Alignment 1: right justified
 Result Width 21
 Bold? normal
 Underline? normal

[Copy Template](#)
[Remove Template](#)
[Reset Lock](#)
[Save](#)

Session Info: Terry is using IES
 Desktop Application Wizard Tag Business Template BOFRIND-TAG-TEMPLATE1 2010/09/17 12:48:12

Slide 16

Slide notes: Once we have the required width and space for the expected Tag Value in the Layout, then we still have a setting on the Tag Template or in the Macro where we indicate the maximum allowed width of the resulting Tag Value. In this case, irrespective of the width that is allowed in the Layout, DocWriter will chop off any Value that exceeds the indicated maximum character width. The side of the Value that is chopped off is dependent on the Alignment selected on the Template.

IES Client v8.29 : My IES

Help Submit Quit Functions Commands

TEMPLATE 002: GL Numeric - Single Rule

Tag # 0003

Name Transfer Suspense Current

Name #1 (Mandatory) Liabilities LEDGER Actual

Name #2 (Optional)

Names Operation 1: no operation

Acct Selection Basis KEY9 EMUNERATE SPECIFIC ACCOUNT NUMBER

Flag Value to Select 10000005

Sub Acct Lock

Tag Addressing relative

Period Mapping 2: tag maps to current year

Forex Exchange Rate 1: not used

Financial Scaling 1: no scaling

Rounding for Numbers 1: do not apply rounding

Display Mask m02,i

Alignment r: right justified

Result Width 21

Bold? normal

Underline? normal

☐ Sign Convert ? (+/-)

Tag Result always return a result

Operator *

Conditional Value

[Copy Template](#)

[Remove Template](#)

[Reset Lock](#)

[Save](#)

Session Info: Terry is using IES

Desktop Application Wizard Tag Business Template BOFRIND-TAG-TEMPLATE1 2010/09/17 12:42:14

Slide 17

Slide notes:

IES Client v8.29 : My IES

Help Submit Quit Functions Commands

TEMPLATE 002: GL Numeric - Single Rule

Tag # 0003

Name Transfer Suspense Current

Name #1 (Mandatory) Liabilities LEDGER Actual

Name #2 (Optional)

Names Operation 1: no operation

Acct Selection Basis KEY9 EMUNERATE SPECIFIC ACCOUNT NUMBER

Flag Value to Select 10000005

Sub Acct Lock

Tag Addressing relative

Period Mapping 2: tag maps to current year

Forex Exchange Rate 1: not used

Financial Scaling 1: no scaling

Rounding for Numbers 1: do not apply rounding

Display Mask m02,i

Alignment r: right justified

Result Width 21

Bold? normal

Underline? normal

☐ Sign Convert ? (+/-)

Tag Result always return a result

Operator *

Conditional Value

[Copy Template](#)

[Remove Template](#)

[Reveal Lock](#)

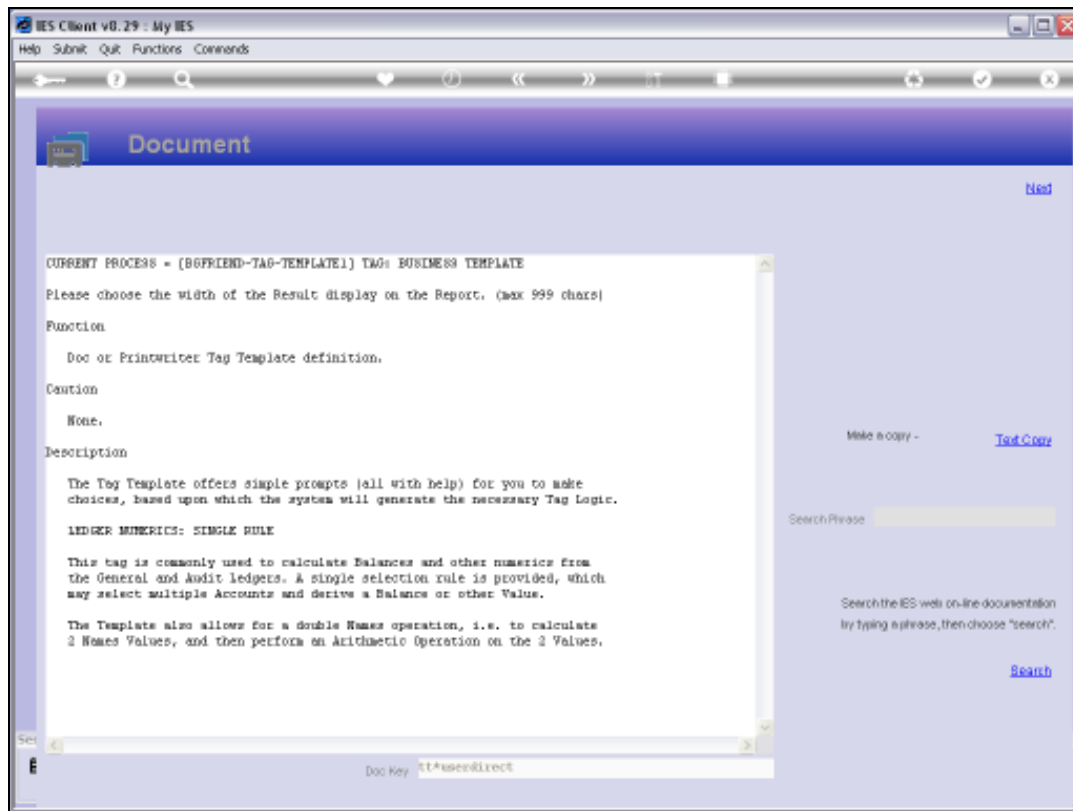
[Save](#)

Session Info: Terry is using IES

Desktop Application Wizard Tag Business Template BOFRIND-TAG-TEMPLATE1 2010/09/17 12:43:15

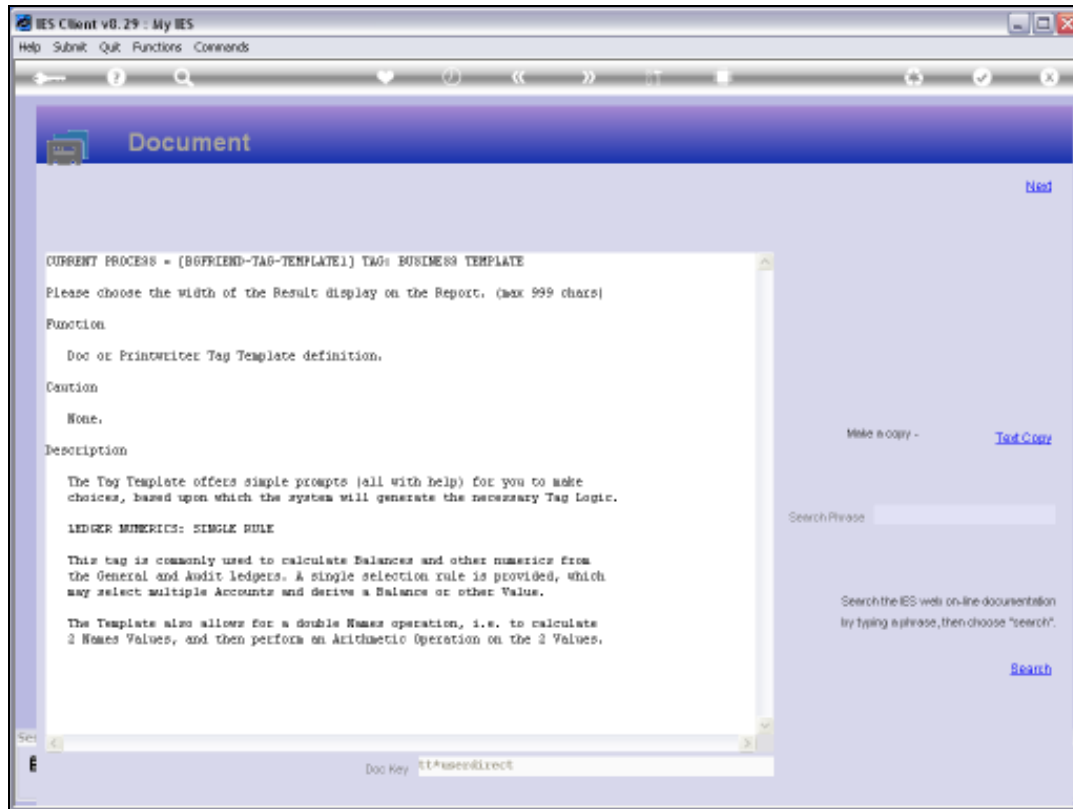
Slide 18

Slide notes:



Slide 19

Slide notes: The Help says that a maximum width of 999 characters are allowed for a single Tag Result.



Slide 20

Slide notes:

IES Client v8.29 : My IES

Help Submit Quit Functions Commands

TEMPLATE 002: GL Numeric - Single Rule

Tag # 0003

Name Transfer Suspense Current

Name #1 (Mandatory) Liabilities LEDGER Actual

Name #2 (Optional)

Names Operation 1: no operation

Acct Selection Basis KEY9 EMUNERATE SPECIFIC ACCOUNT NUMBER

Flag Value to Select 10000005

Sub Acct Lock

Tag Addressing relative

Period Mapping 2: tag maps to current year

Forex Exchange Rate 1: not used

Financial Scaling 1: no scaling

Rounding for Numbers 1: do not apply rounding

Display Mask m02,i

Alignment r: right justified

Result Width 20

Bold? normal

Underline? normal

☐ Sign Convent ? (+/-)

Tag Result always return a result

Operator *

Conditional Value

[Copy Template](#)

[Remove Template](#)

[Reveal Lock](#)

[Save](#)

Session Info: Terry is using IES

Desktop Application Wizard Tag Business Template BOFRIND-TAG-TEMPLATE1 2010/09/17 12:43:37

Slide 21

Slide notes:

IES Client v8.29: My IES

Help Submit Quit Functions Commands

TEMPLATE 002: GL Numeric - Single Rule

TAG # 0003

Name Transfer Suspense Current

Name #1 (Mandatory) Liabilities LEDGER Actual

Name #2 (Optional) Liabilities LEDGER Actual

Name Operation 1: no operation

Acct Selection Basis KEYS EMUNERATE SPECIFIC ACCOUNT NUMBER

Flag Value to Select 10000005

Sub Acct Lock

Tag Addressing relative

Period Mapping 2: tag maps to current year

Forex Exchange Rate 1: not used

Financial Scaling 1: no scaling

Rounding for Numbers 1: do not apply rounding

Display Mask M02,1

Alignment 1: right justified

Result Width 21

Bold? normal

Underline? normal

Sign Convent? (+/-)

Tag Result always return a result

Operator =

Conditional Value

[Copy Template](#)

[Remove Template](#)

[Reveal Link](#)

[Save](#)

Session Info: Terry is using IES

Desktop Application Wizard Tag Business Template BOFRIND-TAG-TEMPLATE1 2010/09/17 12:43:38

Slide 22

Slide notes: Therefore, whenever we notice that some Tag Values appear not to be fully shown in the Report, then we need to look at these 2 aspects of the Tag Result Width.