

	Actual Current	Budget	Actual YTD	Budget YTD	Annual Budget
Revenue					
Stock Sales	0	0	(1,562)	0	0
Other	0	0	0	0	0
Total Revenue	0	0	(1,562)	0	0
Costs					
Rent and Utilities	0	0	30	0	0
Bad Debts	0	0	0	0	0
Staff Costs	18	10	346	170	180
Office Costs	0	0	34	0	0
Audit Fees	0	0	0	0	0
Computer Systems	0	0	3	0	0
Equipment Maintenance	18	18	188	170	180
Sundry Expenses	0	0	0	0	0
Total Cost of Sales	26	28	594	340	360
Gross Profit	26	28	(968)	340	360

Slide 1

Slide notes: In some cases, we may want to display numbers with a Sign Change. In this example, we have a result that is from some Income Accounts, and therefore the value is Negative. There is absolutely nothing wrong with displaying it like this in the Report either, but certainly we sometimes may wish to present the numbers differently, and show such Values as positive.

File Edit View Favorites Tools Help

Google Search Share Save Check Translate AutoFill Sign In

1127.0.0.1/bridge/01232941095.htm

Page Safety Tools

Gummy Design Inc.					
Profit and Loss (Income Statement) for Jul 2010					
	Actual Current	Budget	Actual YTD	Budget YTD	Annual Budget
Revenue					
Stock Sales	0	0	(1,562)	0	0
Other	0	0	0	0	0
Total Revenue	0	0	(1,562)	0	0
Costs					
Rent and Utilities	0	0	30	0	0
Bad Debts	0	0	0	0	0
Staff Costs	10	10	346	170	180
Office Costs	0	0	34	0	0
Audit Fees	0	0	0	0	0
Computer Systems	0	0	3	0	0
Equipment Maintenance	10	10	180	170	185
Sundry Expenses	0	0	0	0	0
Total Cost of Sales	20	20	594	340	365
Gross Profit	20	20	(960)	340	365

Slide 2

Slide notes:

File Edit View Favorites Tools Help

Google Search Share Save Check Translate AutoFill Sign In

Free Hotmail Suggested Sites Web Site Gallery

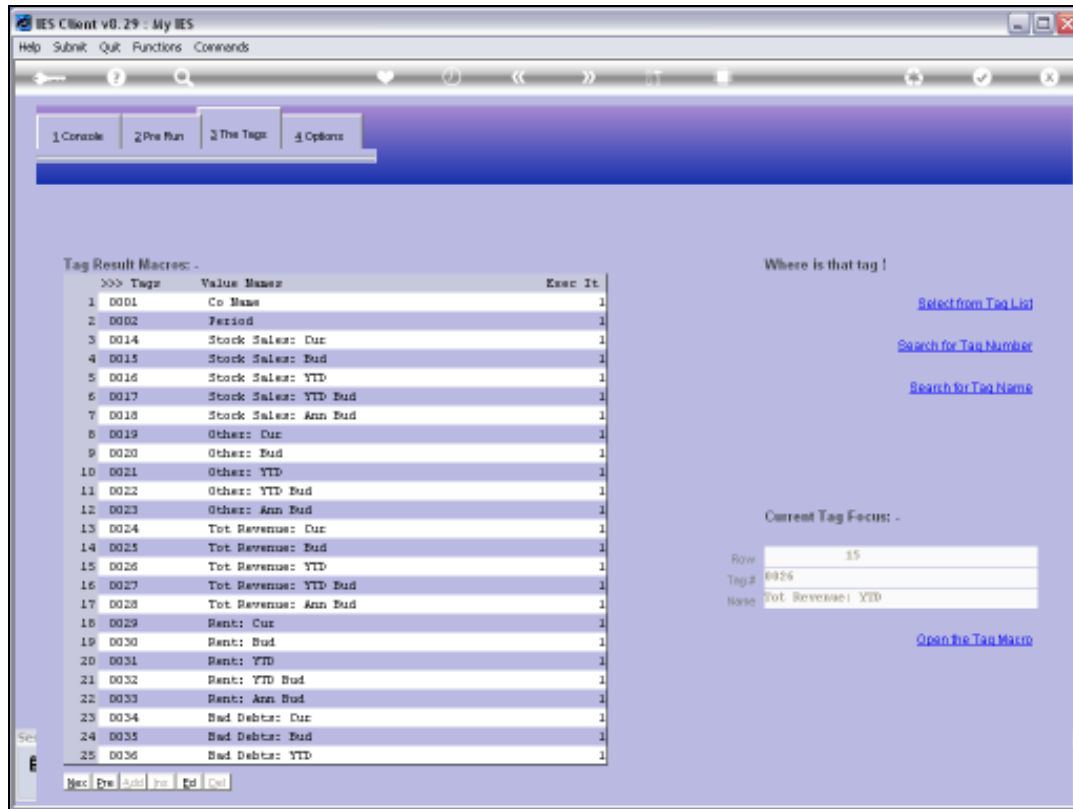
127.0.0.1/bridge/D1526941095.htm

Page Safety Tools

Gummy Design Inc.					
Profit and Loss (Income Statement) for Jul 2010					
	Actual Current	Budget	Actual YTD	Budget YTD	Annual Budget
Revenue					
Stock Sales	0	0	(1,562)	0	0
Other	0	0	0	0	0
Total Revenue	0	0	(1,562)	0	0
Costs					
Rent and Utilities	0	0	30	0	0
Bad Debts	0	0	0	0	0
Staff Costs	10	10	346	170	180
Office Costs	0	0	34	0	0
Audit Fees	0	0	0	0	0
Computer Systems	0	0	3	0	0
Equipment Maintenance	10	10	180	170	180
Sundry Expenses	0	0	0	0	0
Total Cost of Sales	20	20	594	340	360
Gross Profit	20	20	(968)	340	360

Slide 3

Slide notes:



Slide 4

Slide notes:

IES Client v8.29 : My IES

Help Submit Quit Functions Commands

TEMPLATE 007: GL Numeric - Double Rule

Tag # 0016

Name Stock Sales YTD

Name #1 (Mandatory) Liact-ptd LEDGERs Actual Ptd

Name #2 (Optional)

Names Operation 1: no operation

1st Acct Selection Basis 1908 P&L POSITION

Flag Value to Select 20

Rule OR

2nd Account Selection 1908 P&L POSITION

Flag Value to Select 22

Sub Acct Lock

Tag Addressing relative

Period Mapping 2: tag maps to current year

Forex Exchange Rate 2: multiply

Financial Scaling 3: divide by thousand 1,000

Rounding for Numbers 1: do not apply rounding

Display Mask MD2,i

Alignment 1: right justified

Result Width 21

Bold? NORMAL

Underline? NORMAL

☐ Sign Convert ? (+/-)

Tag Result ALWAYS RETURN A RESULT

Test Operator *

Conditional Value

[Copy Template](#)

[Remove Template](#)

[Reset Locks](#)

[Save](#)

Session Info: Terry is using IES

Application Wizard Tag Business Template BOFRIND-TAG-TEMPLATE10 2010/09/26 11:29:35

Slide 5

Slide notes:

IES Client v8.29 : My IES

Help Submit Quit Functions Commands

TEMPLATE 007: GL Numeric - Double Rule

Tag # 0016

Name Stock Sales YTD

Name #1 (Mandatory) Liact-ptd LEDGERs Actual Ptd

Name #2 (Optional)

Names Operation 1: no operation

1st Acct Selection Basis 1908 P&L POSITION

Flag Value to Select 20

Rule OR

2nd Account Selection 1908 P&L POSITION

Flag Value to Select 22

Sub Acct Lock

Tag Addressing relative

Period Mapping 2: tag maps to current year

Forex Exchange Rate 2: multiply

Financial Scaling 3: divide by thousand 1,000

Rounding for Numbers 1: do not apply rounding

Display Mask MD2,1

Alignment r: right justified

Result Width 21

Bold? NORMAL

Underline? NORMAL

☐ Sign Convert ?(+)

Tag Result ALWAYS RETURN A RESULT

Test Operator *

Conditional Value

[Copy Template](#)

[Remove Template](#)

[Reset Locks](#)

[Save](#)

Session Info: Terry is using IES

Application Wizard Tag Business Template BOFRIND-TAG-TEMPLATE10 2010/09/25 11:29:36

Slide 6

Slide notes: That's what the 'sign convert' function is for. It will turn a positive into a negative and vice versa.

IES Client v8.29 : My IES

Help Submit Quit Functions Commands

TEMPLATE 007: GL Numeric - Double Rule

Tag # 0016

Name Stock Sales: YTD

Name #1 (Mandatory) Liact-ptd LEDGERs Actual Ptd

Name #2 (Optional)

Names Operation 1: no operation

1st Acct Selection Basis 1908 P&L POSITION

Flag Value to Select 20

Rule OR

2nd Account Selection 1908 P&L POSITION

Flag Value to Select 22

Sub Acct Lock

Tag Addressing relative

Period Mapping 2: tag maps to current year

Forex Exchange Rate 2: multiply

Financial Scaling 3: divide by thousand 1,000

Rounding for Numbers 1: do not apply rounding

Display Mask #R02,i

Alignment 2: right justified

Result Width 21

Bold? NORMAL

Underline? NORMAL

☒ Sign Convert (+/-)

Tag Result ALWAYS RETURN A RESULT

Test Operator *

Conditional Value

[Copy Template](#)

[Remove Template](#)

[Reset Locks](#)

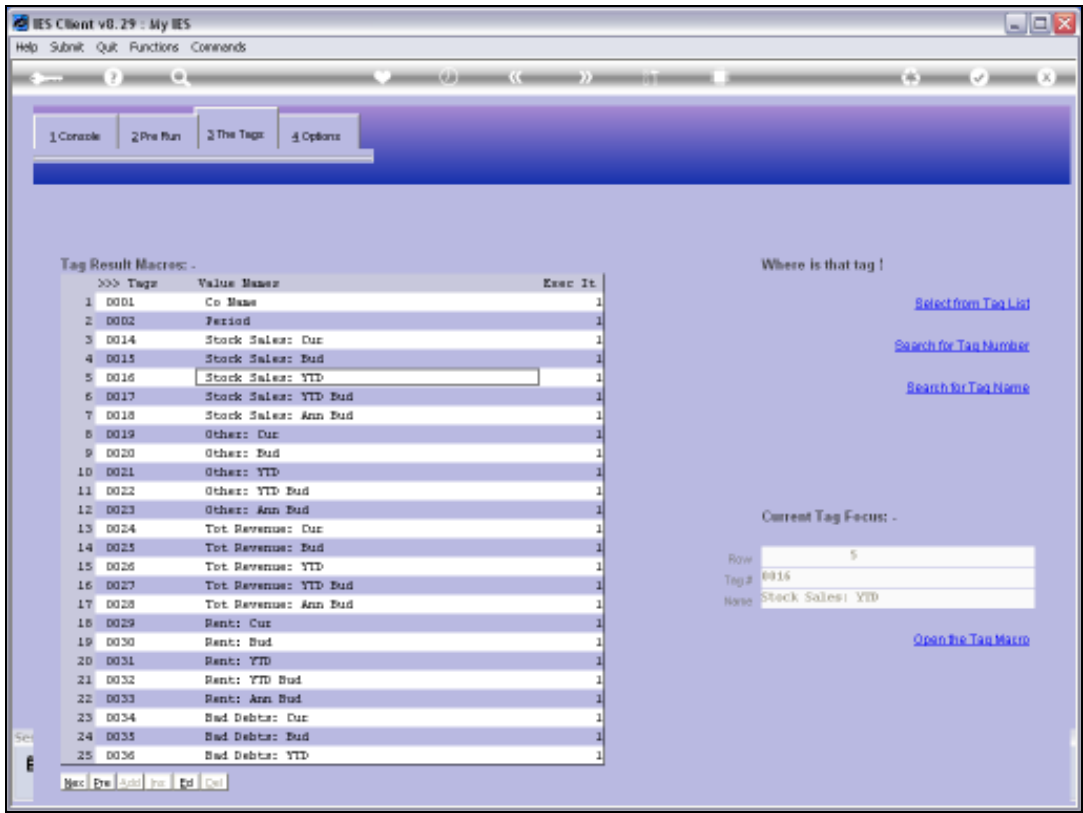
[Save](#)

Session Info: Terry is using IES

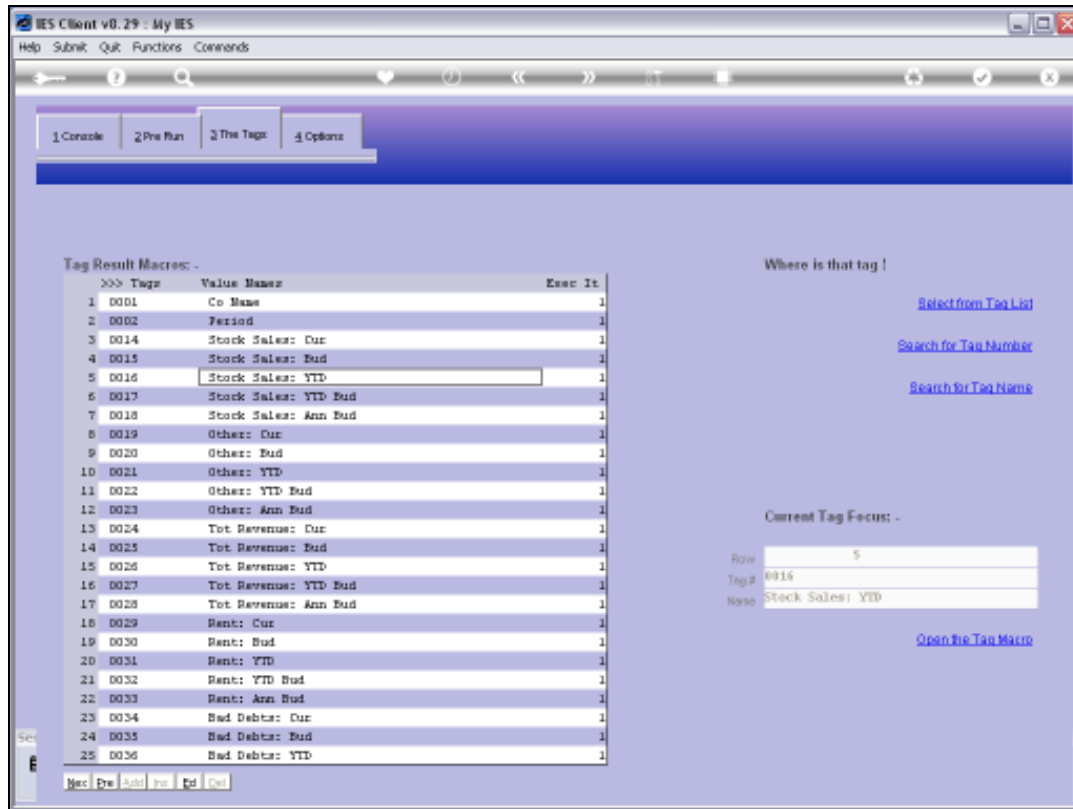
Application Wizard Tag Business Template BOFRIND-TAG-TEMPLATE10 2010/09/26 11:29:39

Slide 7

Slide notes:



Slide 8
Slide notes:



Slide 9

Slide notes:



Slide 10

Slide notes:



Slide 11

Slide notes:



Slide 12

Slide notes:

U127.0.0.1\bridge\01556941406.htm - Windows Internet Explorer

U127.0.0.1\bridge\01556941406.htm

File Edit View Favorites Tools Help

Google Search Share Save Check Translate AutoFill Sign In

Free-Hotel Discount Price My Site Gallery

U127.0.0.1\bridge\01556941406.htm

Company: Group, Inc.
Profit and Loss (Income Statement) for Jul 2010

	Actual Current	Budget	Actual YTD	Budget YTD	Annual Budget
Revenue					
Stock Sales	0	0	1,562	0	0
Other	0	0	0	0	0
Total Revenue	0	0	1,562	0	0
Costs					
Rent and Utilities	0	0	20	0	0
Bad Debts	0	0	0	0	0
Staff Costs	18	10	348	170	180
Office Costs	0	0	34	0	0
Audit Fees	0	0	0	0	0
Computer Systems	0	0	3	0	0
Equipment Maintenance	18	15	180	170	185
Sundry Expenses	0	0	0	0	0
Total Cost of Sales	36	25	584	340	365
Gross Loss	36	25	2,155	340	365

Slide 13

Slide notes: And now the number is shown as a positive.

W127.0.0.1\bridge\01556941406.htm - Windows Internet Explorer

W127.0.0.1\bridge\01556941406.htm

File Edit View Favorites Tools Help

Google Search Share Save Check Translate AutoFill Sign In

Free-Hotel Discount Price My Site Gallery

W127.0.0.1\bridge\01556941406.htm

Company: Group, Inc.
Profit and Loss (Income Statement) for Jul 2010

	Actual Current	Budget	Actual YTD	Budget YTD	Annual Budget
Revenue					
Stock Sales	0	0	1,562	0	0
Other	0	0	0	0	0
Total Revenue	0	0	1,562	0	0
Costs					
Rent and Utilities	0	0	20	0	0
Bad Debts	0	0	0	0	0
Staff Costs	18	10	346	170	180
Office Costs	0	0	34	0	0
Audit Fees	0	0	0	0	0
Computer Systems	0	0	3	0	0
Equipment Maintenance	18	15	180	170	185
Sundry Expenses	0	0	0	0	0
Total Cost of Sales	36	25	584	340	365
Gross Loss	36	25	2,155	340	365

Slide 14

Slide notes: