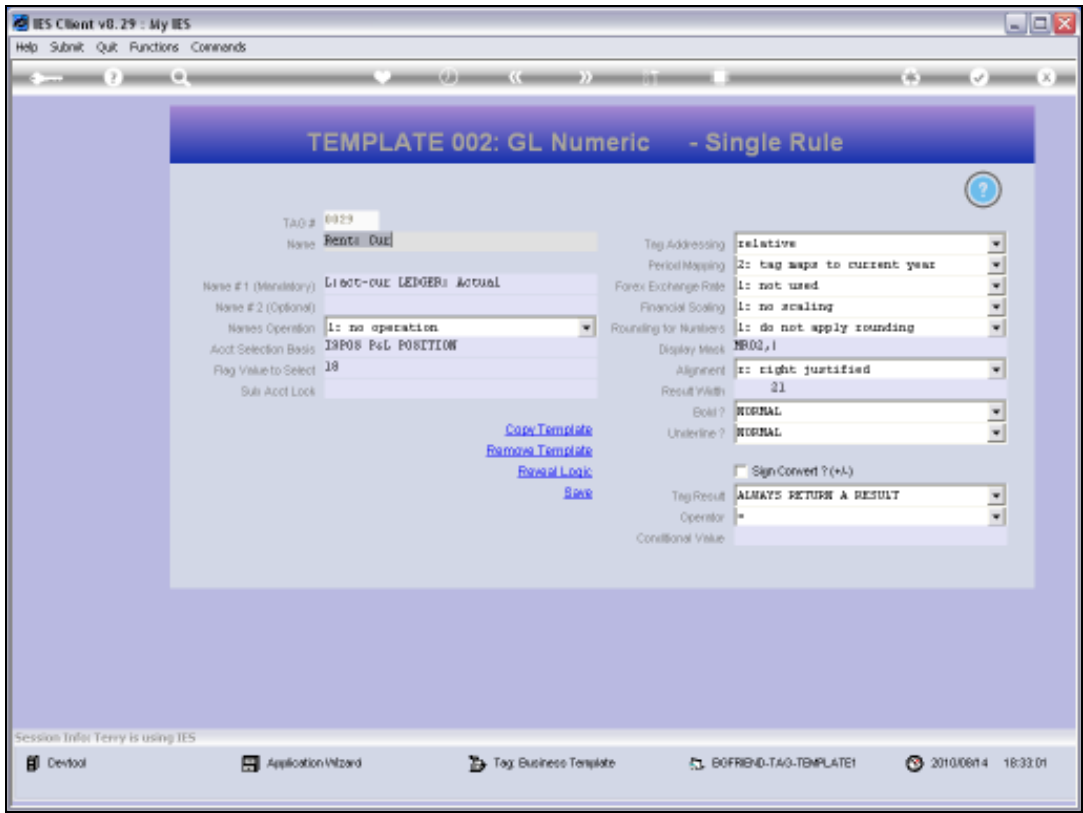


Slide 1

Slide notes: Every Tag that is using a Template also has a 'Remove Template' option.



Slide 2
Slide notes:

IES Client v8.29 : My IES

Help Submit Quit Functions Commands

TEMPLATE 002: GL Numeric - Single Rule

TAG # 0029

Name Rental Due

Name #1 (Mandatory) Liabilities LEIGER Actual

Name #2 (Optional)

Names Operation 1: no operation

Acct Selection Basis 1908 P&L POSITION

Flag Value to Select 18

Sub Acct Lock

Tag Addressing relative

Period Mapping 2: tag maps to current year

Forex Exchange Rate 1: not used

Financial Scaling 1: no scaling

Rounding for Numbers 1: do not apply rounding

Display Mask MR02,i

Alignment 1: right justified

Result Width 21

Bold? NORMAL

Underline? NORMAL

Sign Convent ?(+)

Tag Result ALWAYS RETURN A RESULT

Operator =

Conditional Value

[Copy Template](#)

[Remove Template](#)

[Reveal Link](#)

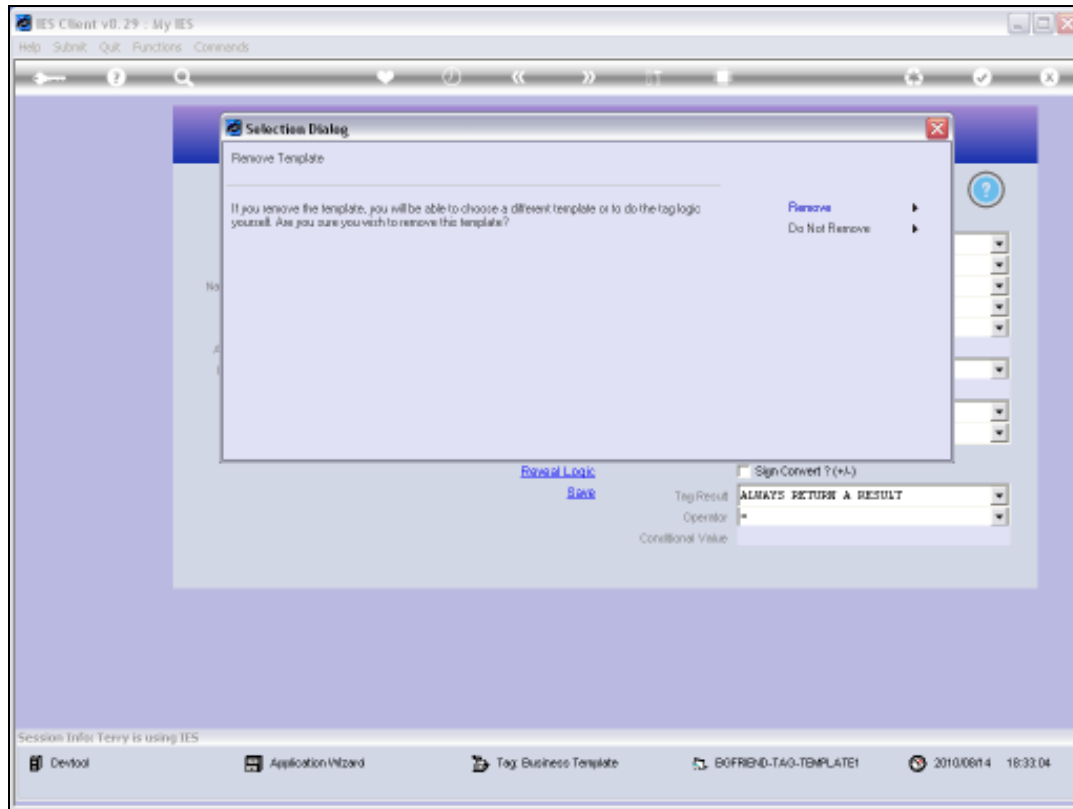
[Save](#)

Session Info: Terry is using IES

Desktop Application Wizard Tag Business Template BOFRIND-TAG-TEMPLATE1 2010/09/24 18:33:01

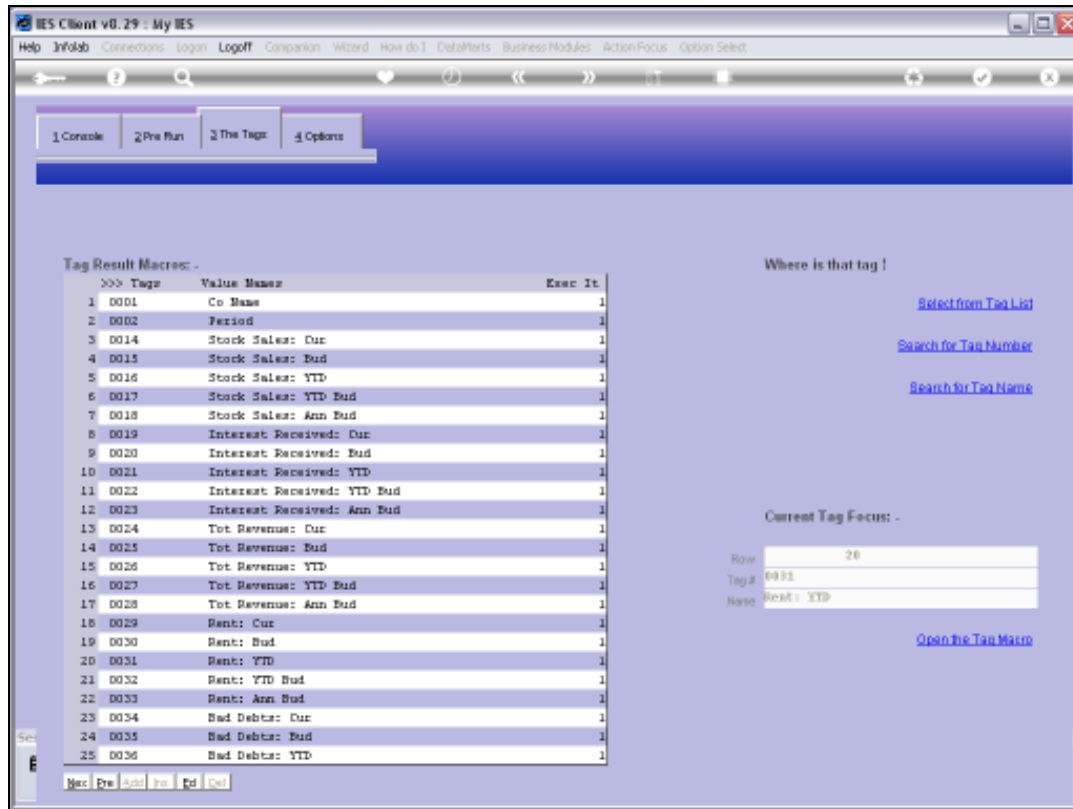
Slide 3

Slide notes: What is the purpose for using 'Remove Template'? It can be used to move to a manual Macro, or else to select a different Template.



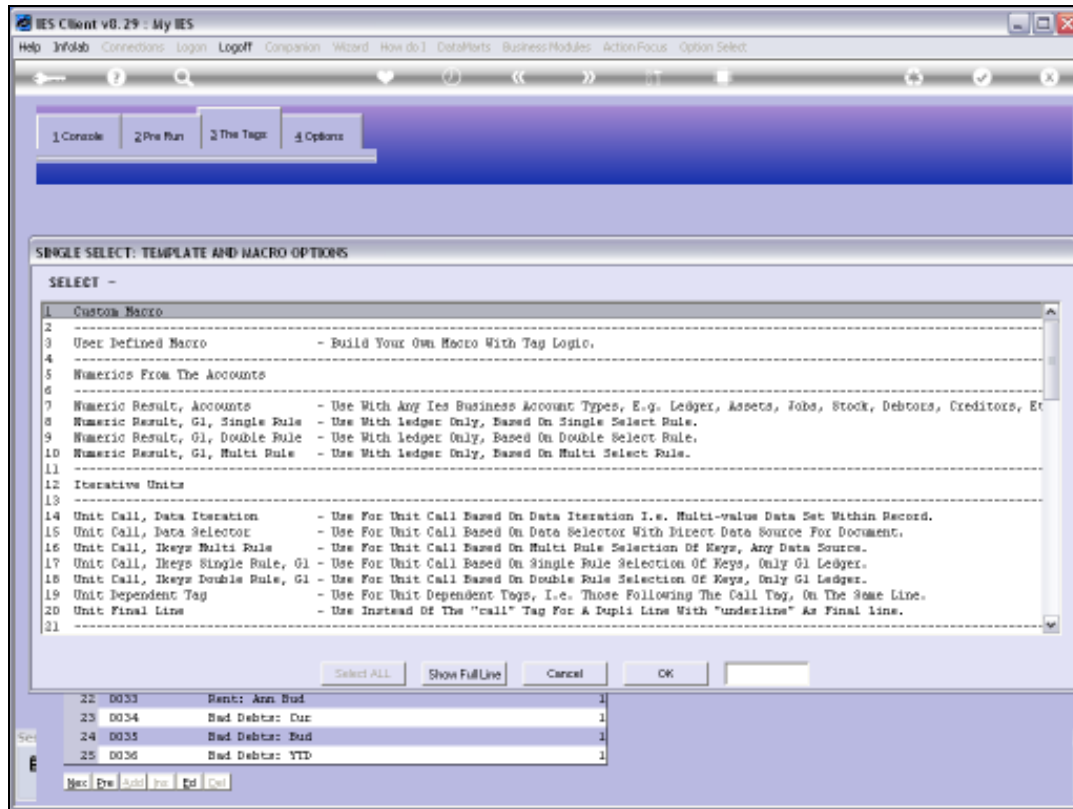
Slide 4

Slide notes:



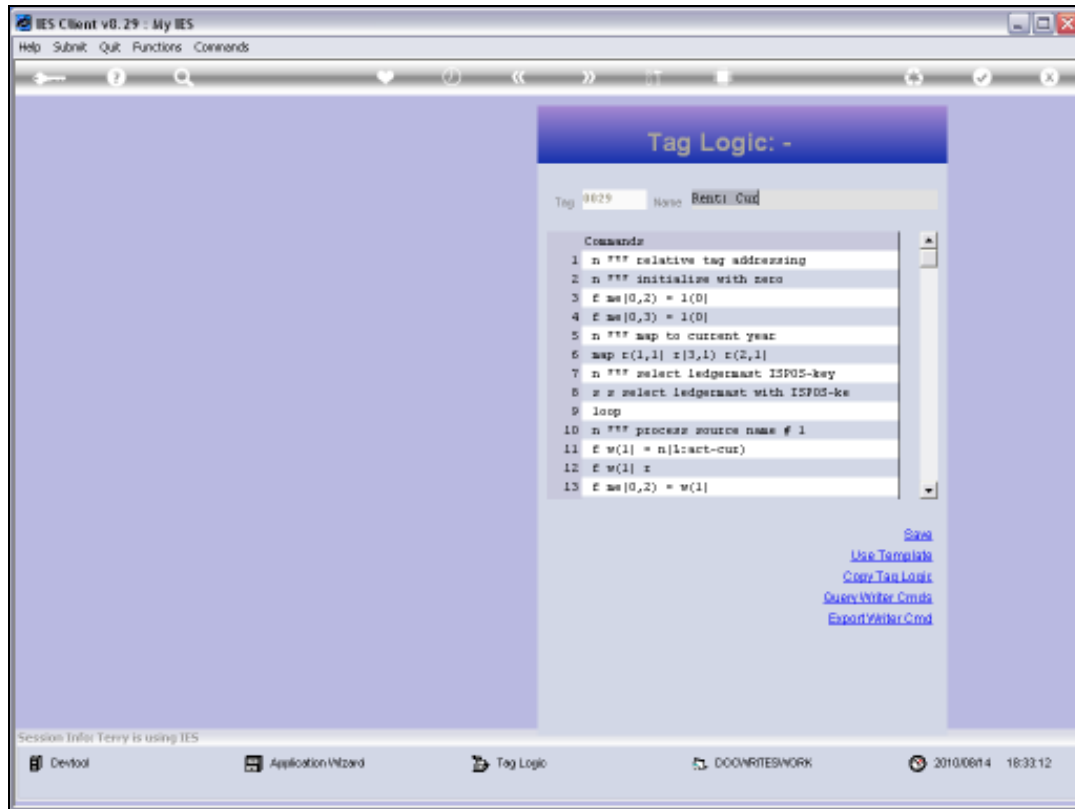
Slide 5

Slide notes:



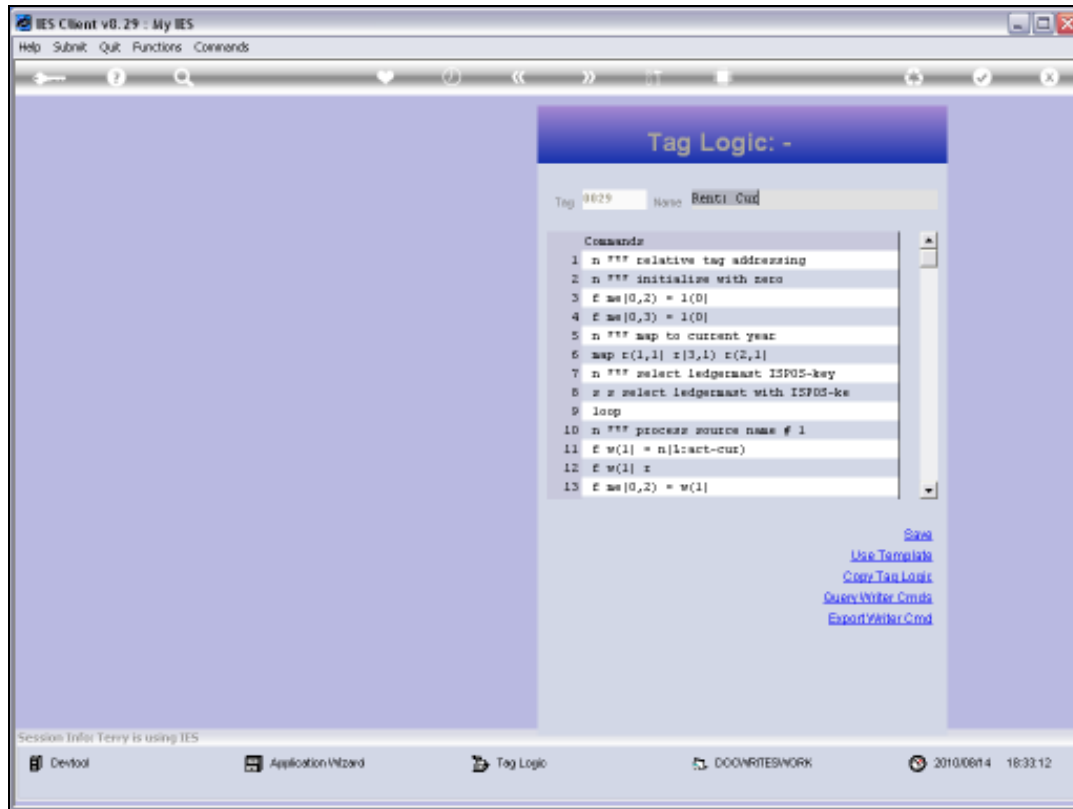
Slide 6

Slide notes: We can now select a different Template to use, or we can choose 'Custom Macro', which is a manual Macro.



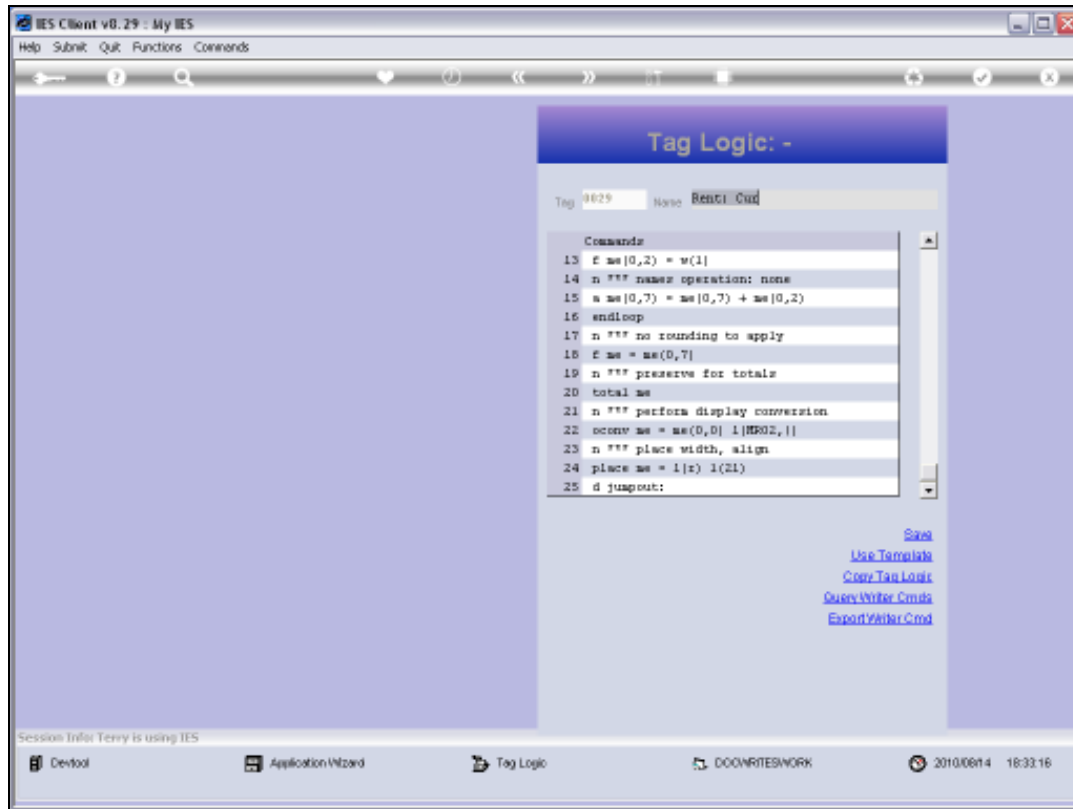
Slide 7

Slide notes: When we move from a Template to a Manual or Custom Macro, then the Tag inherits the Commands of the prior Template. These Commands can now be used, deleted, changed or whatever the need may be.



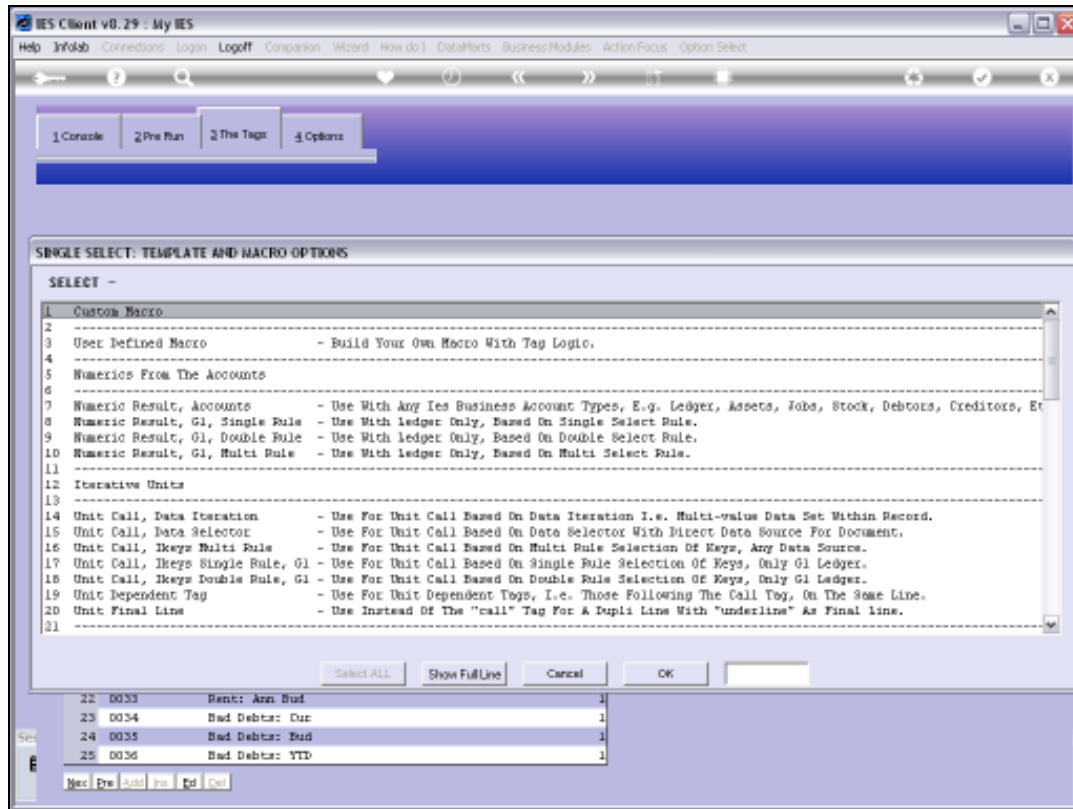
Slide 8

Slide notes:



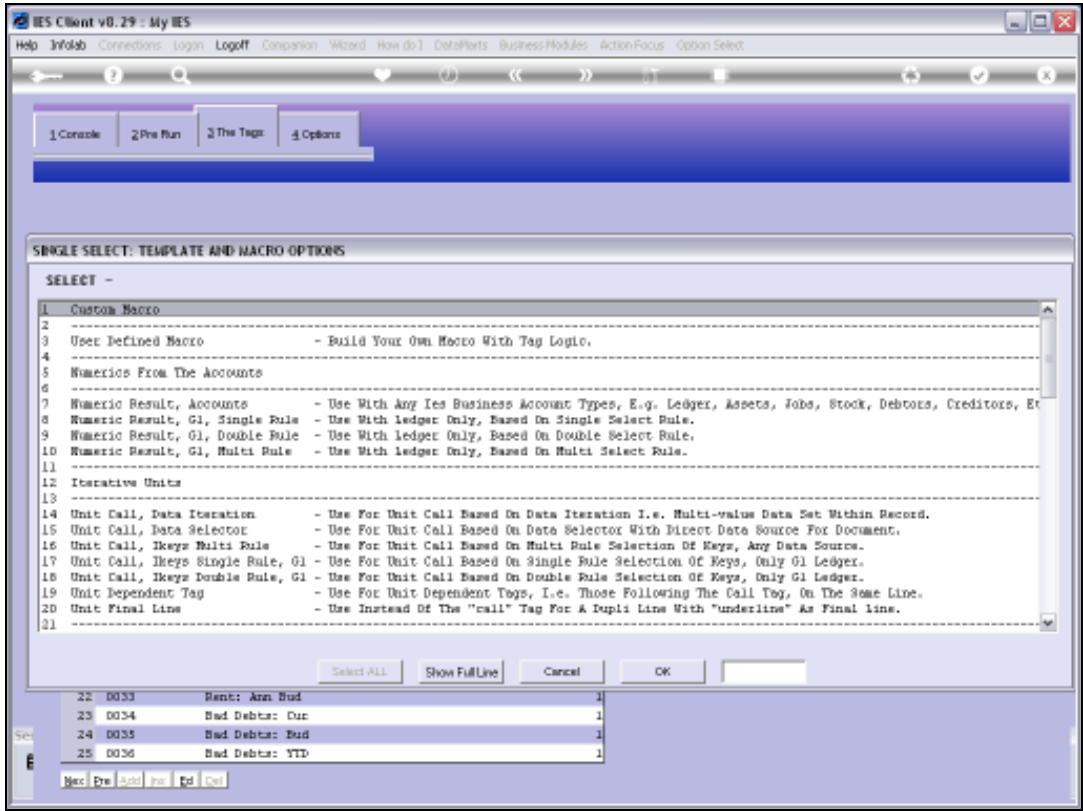
Slide 9

Slide notes: And when we want to move from a manual Macro back to a Template, we can just choose 'Use Template'.

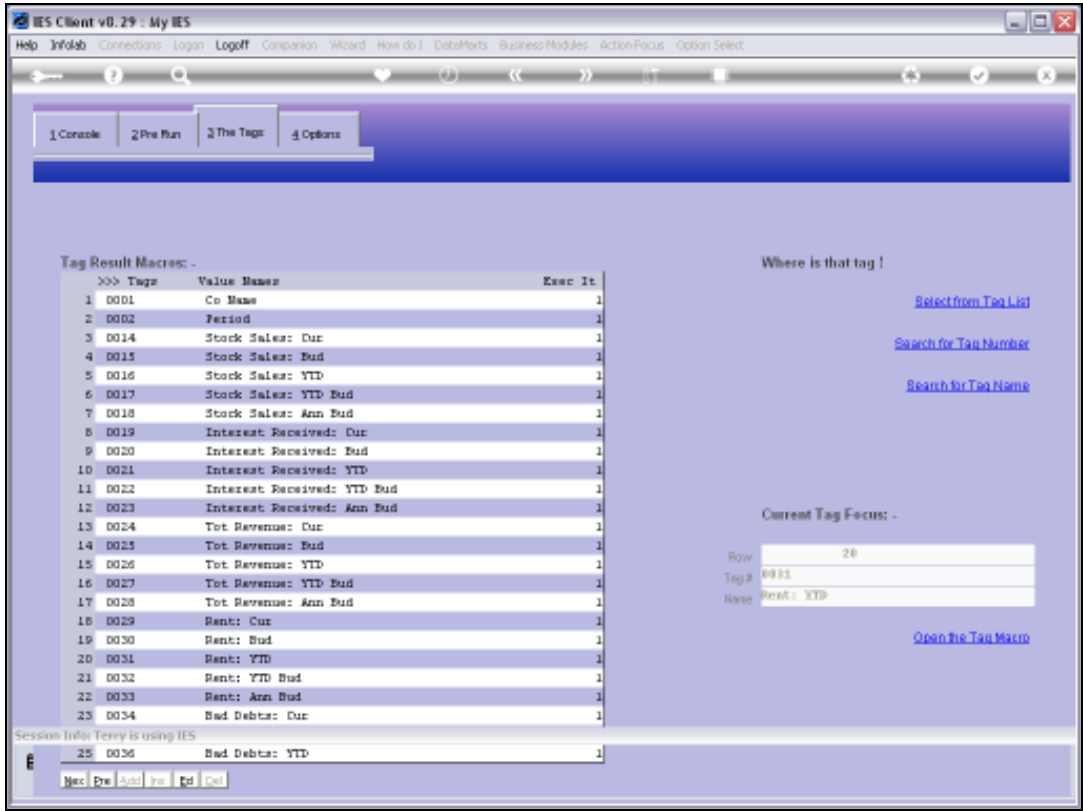


Slide 10

Slide notes: Now we can select a Template again, and fill it's settings before choosing SAVE.



Slide 11
Slide notes:



Slide 12
Slide notes:

IES Client v8.29 : My IES

Help Submit Quit Functions Commands

← ? 🔍 ♥ ⓘ ⏪ ⏩ ⏴ ⏵

TEMPLATE 058: Accounts Numeric - Multi Rule

TAQ # 0029

None Rents Due

Data Source Name

Data Field Name

Data Name OR Literal (see help)

Names Operation 1: no operation

?

[Remove Template](#)
[Copy Template](#)
[Reset Logic](#)
[Save](#)

Tag Addressing relative

Period Mapping 2: tag maps to current year

Forex Exchange Rate 1: not used

Financial Scaling 1: no scaling

Rounding for Numbers 1: do not apply rounding

Display Mask 1: right justified

Alignment 21

Result Width normal

Bold? normal

Underline?

☐ Sign Convert ? (+/-)

Tag Result always return a result

Test Operator *

Conditional Value

Data Selection:

And / Or	Data Name	Value	Value
1			

Set

Slide 13
Slide notes: