

Slide 1 - Slide 1

IES Client v8.29 : My IES

Help Infolab Connections Logon Logoff Companion Wizard How do I DataMarts Business Modules Action Focus Option Select

GENERAL LEDGER

The multi-dimensional GL is integrated throughout, and with primary functions offered here.

[Knowledge Base](#)

Master Files: -

- [Maintain GL Accounts](#)
- [File Maintenance](#)
- [Enquiries](#)

Journals: -

- [Journal Processing](#)

TB Import: -

- [Trial Balance Take On](#)

Chart of Accounts: -

- [COA Options](#)
- [COA Wizard](#)
- [Chart Structure](#)
- [Forex Management](#)

Custom: -

- [Local Options](#)

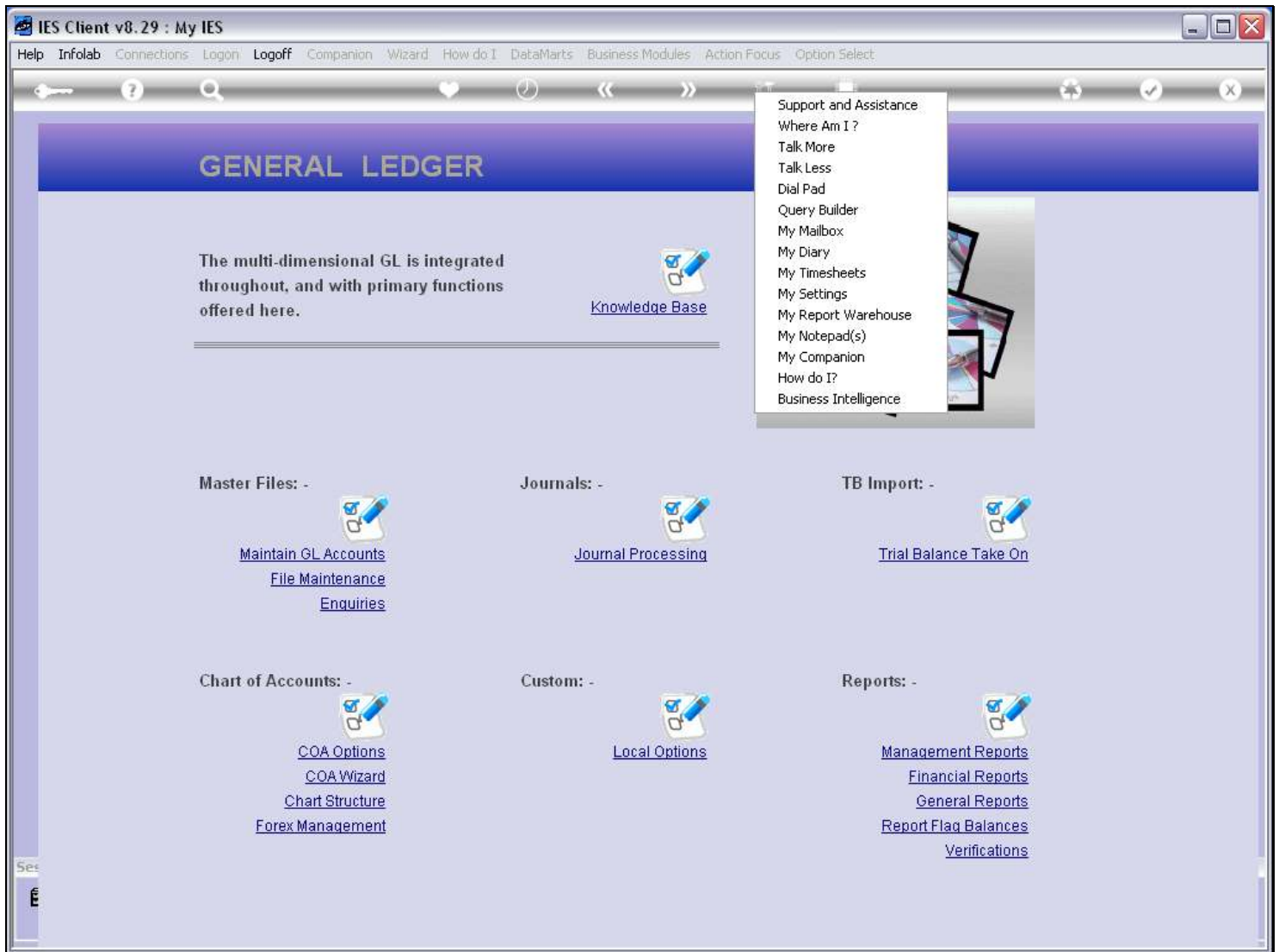
Reports: -

- [Management Reports](#)
- [Financial Reports](#)
- [General Reports](#)
- [Report Flag Balances](#)
- [Verifications](#)

Slide notes

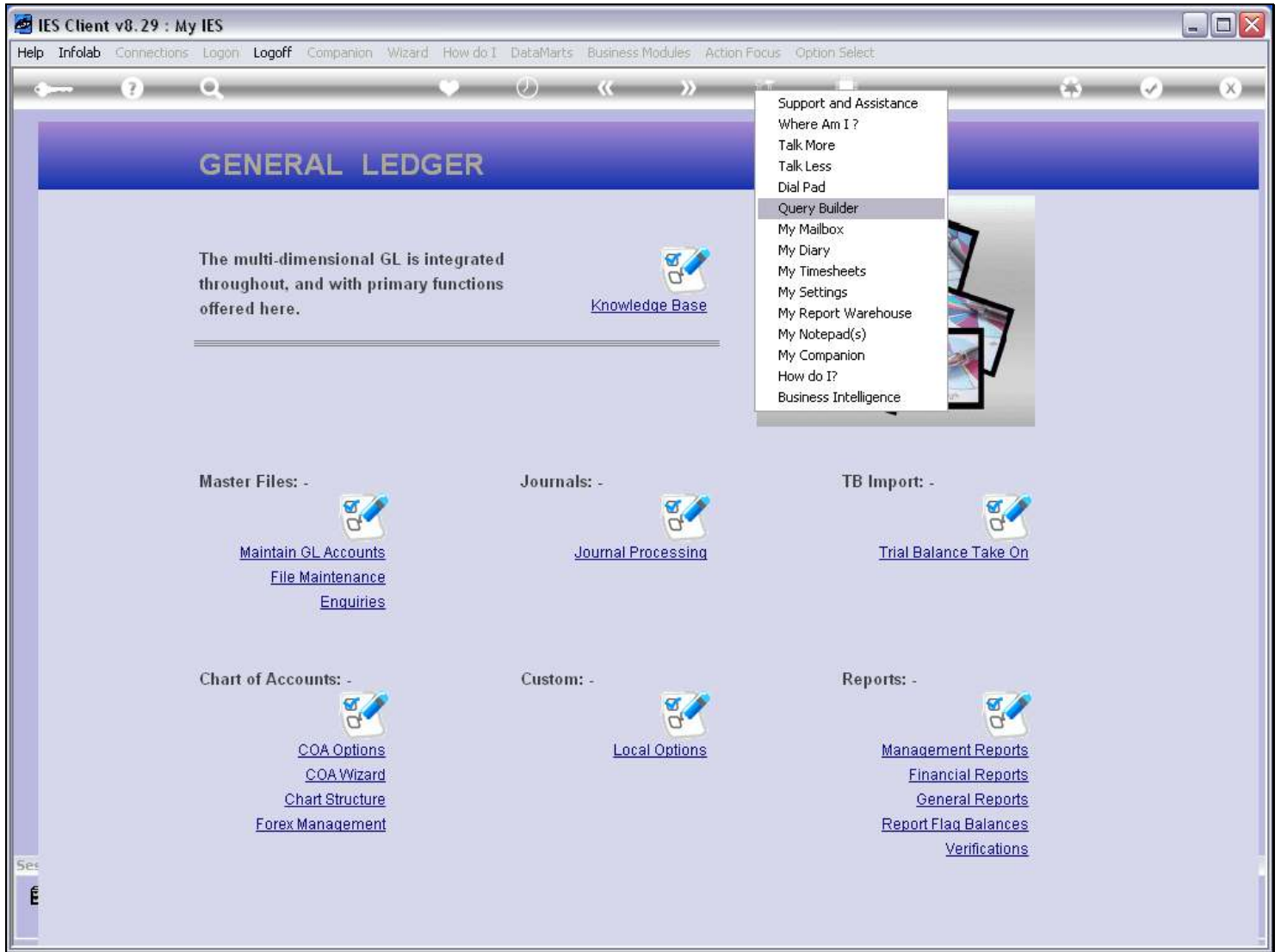
How do we enter Query Builder? It is considered such a basic tool for Users, that it is available on the tools menu. We can reach it from any screen in IES, by choosing the tools icon.

Slide 2 - Slide 2



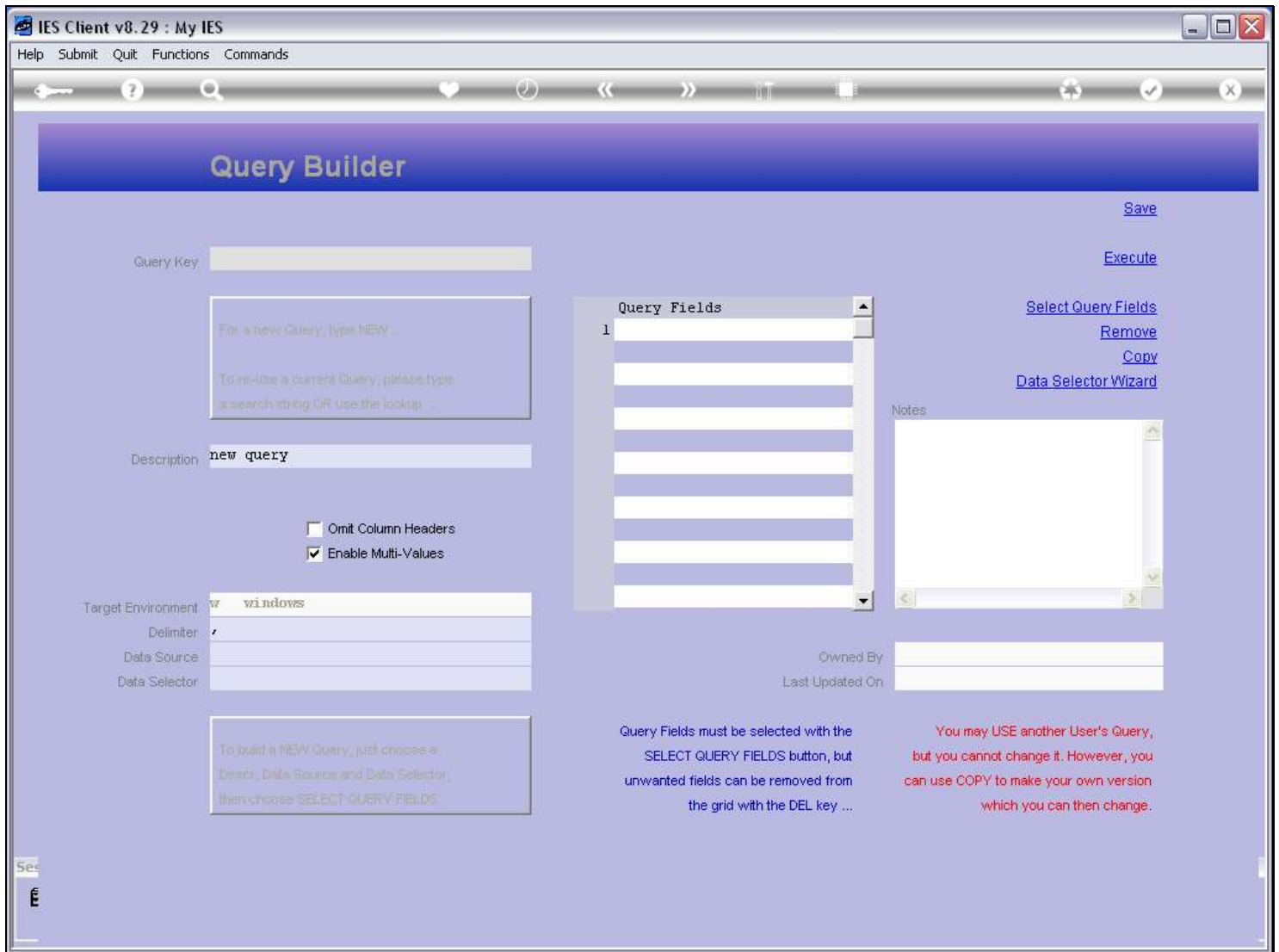
Slide notes

Slide 3 - Slide 3



Slide notes

Slide 4 - Slide 4



Slide notes

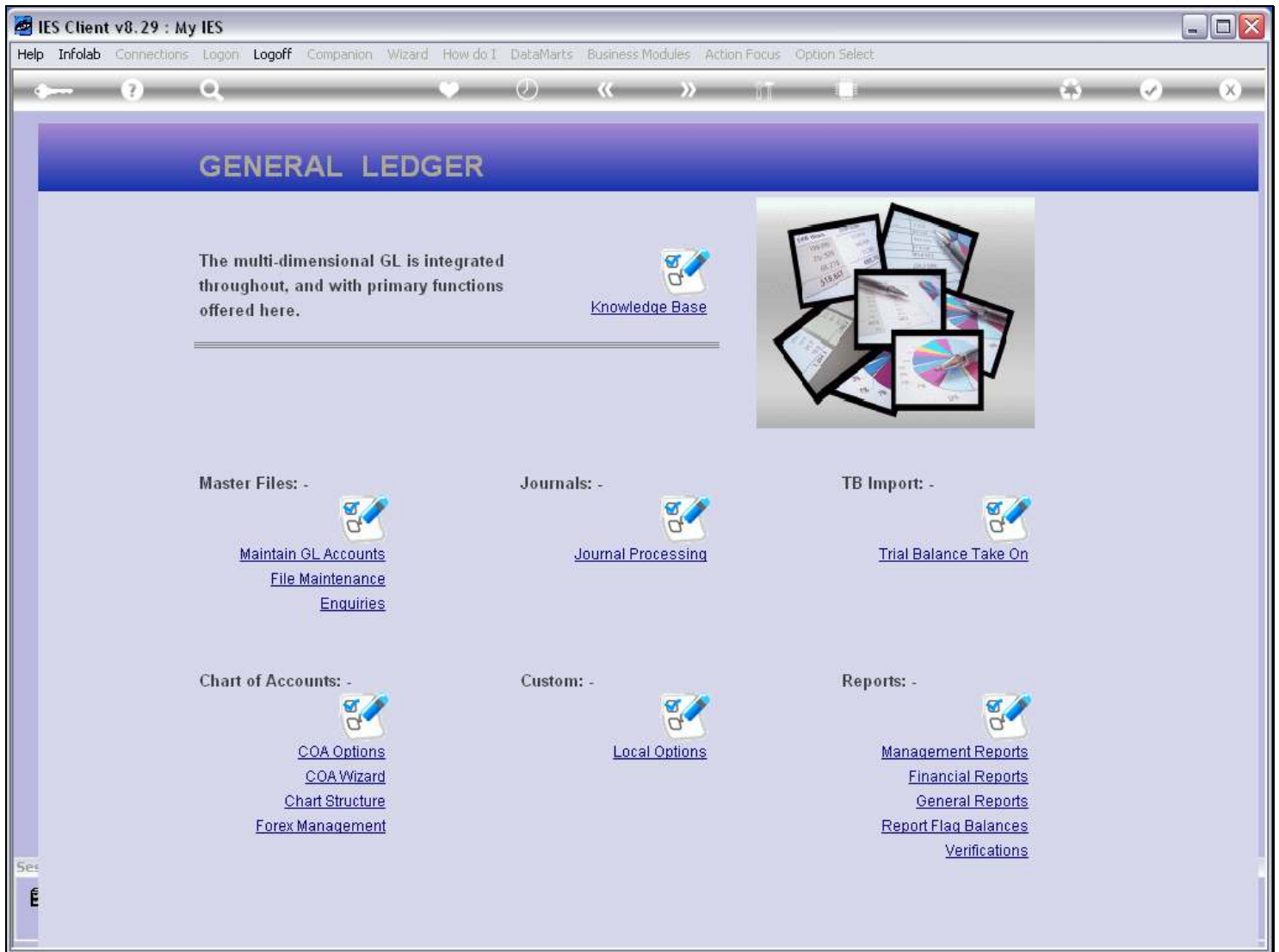
Of course, it is also available on the Application Menu path. For that, we will navigate to the User Services application.

Slide 5 - Slide 5

The screenshot displays the IES Client v8.29: My IES interface. At the top, a menu bar includes Help, Infolab, Connections, Logon, Logoff, Companion, Wizard, How do I, DataMarts, Business Modules, Action Focus, and Option Select. Below the menu is a navigation toolbar with icons for home, search, refresh, and other functions. The main content area is titled "GENERAL LEDGER" in a blue header. Below the header, a text block states: "The multi-dimensional GL is integrated throughout, and with primary functions offered here." To the right of this text is a "Knowledge Base" link with a document icon. Further right is a large image showing several overlapping financial documents, including spreadsheets and charts. Below this image, the interface is organized into six functional categories, each with a document icon and a list of links: "Master Files: -" (Maintain GL Accounts, File Maintenance, Enquiries), "Journals: -" (Journal Processing), "TB Import: -" (Trial Balance Take On), "Chart of Accounts: -" (COA Options, COA Wizard, Chart Structure, Forex Management), "Custom: -" (Local Options), and "Reports: -" (Management Reports, Financial Reports, General Reports, Report Flag Balances, Verifications). A search bar is visible in the bottom left corner.

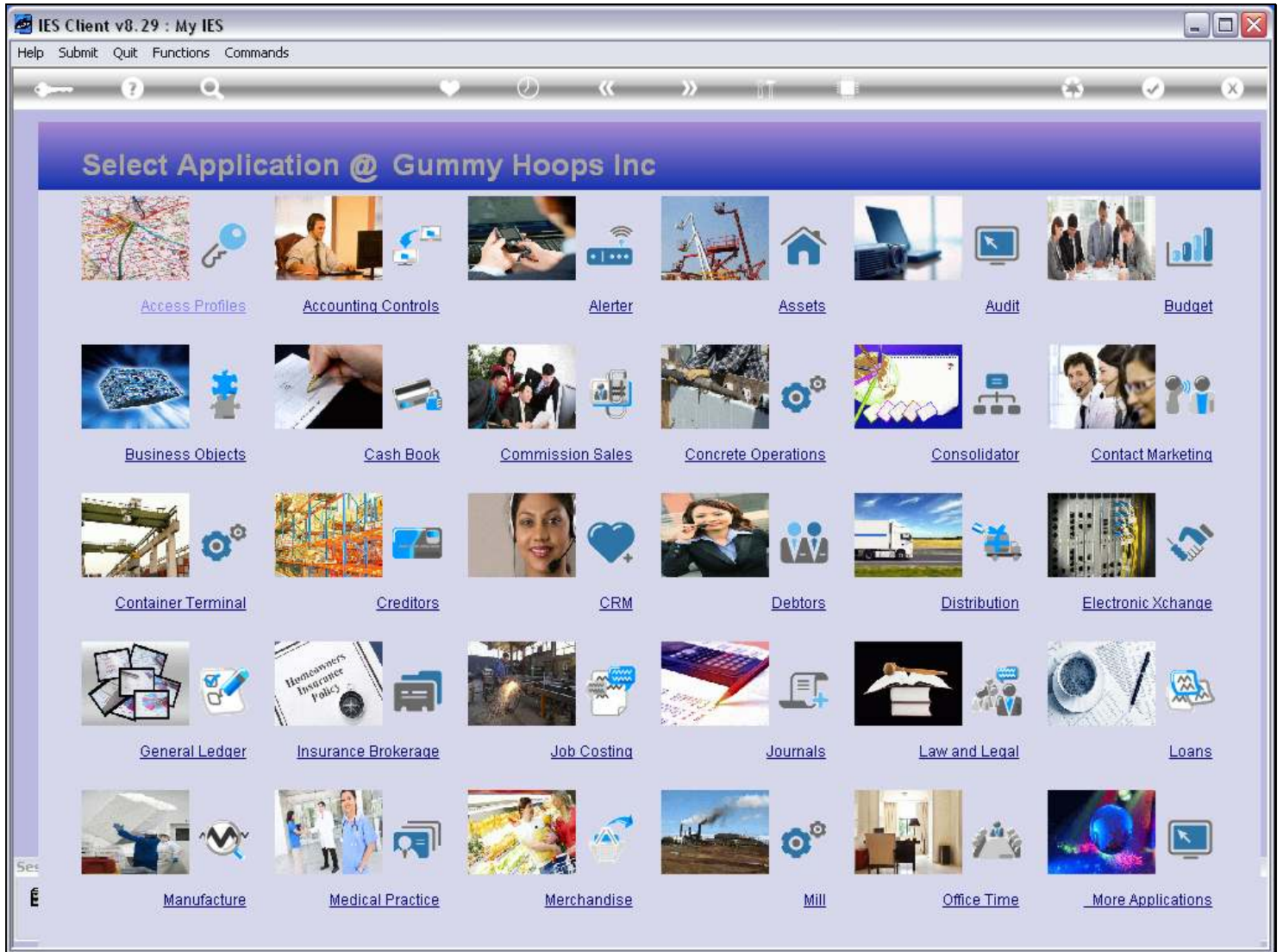
Slide notes

Slide 6 - Slide 6



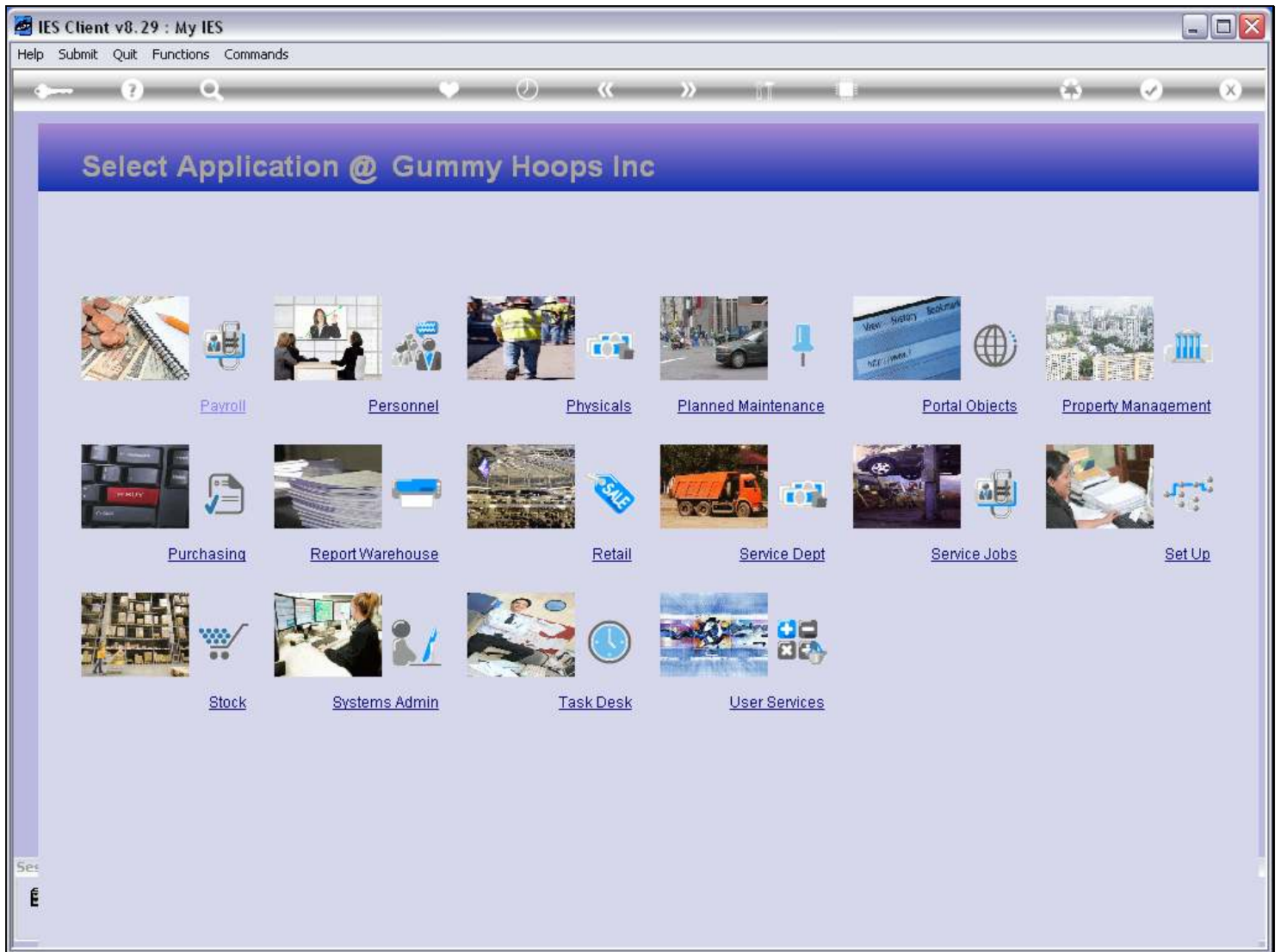
Slide notes

Slide 7 - Slide 7



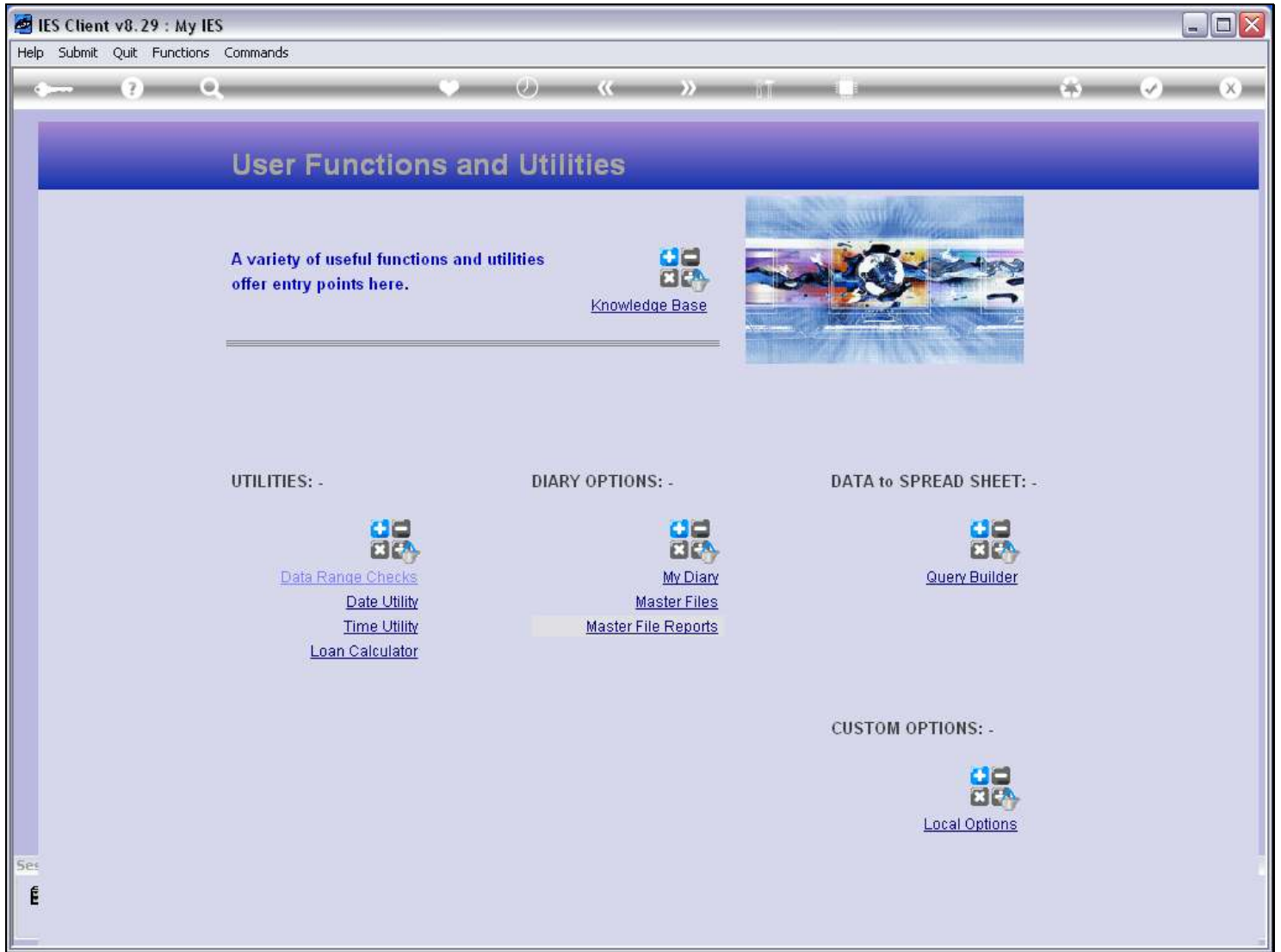
Slide notes

Slide 8 - Slide 8



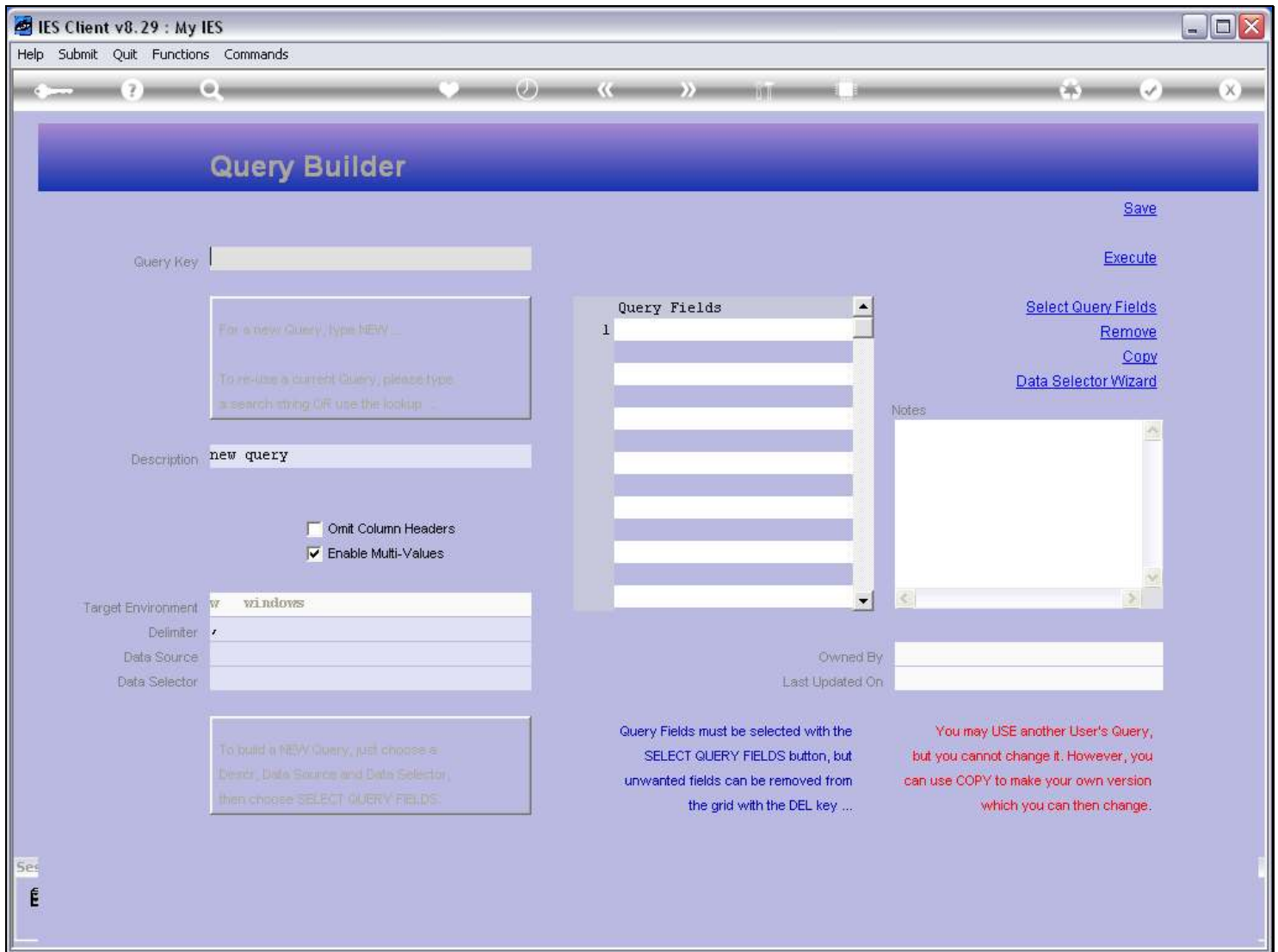
Slide notes

Slide 9 - Slide 9



Slide notes

Slide 10 - Slide 10



Slide notes

So we see that Query Builder can be reached from the menu, but also that we can reach it from any screen in IES directly from the tools icon menu.