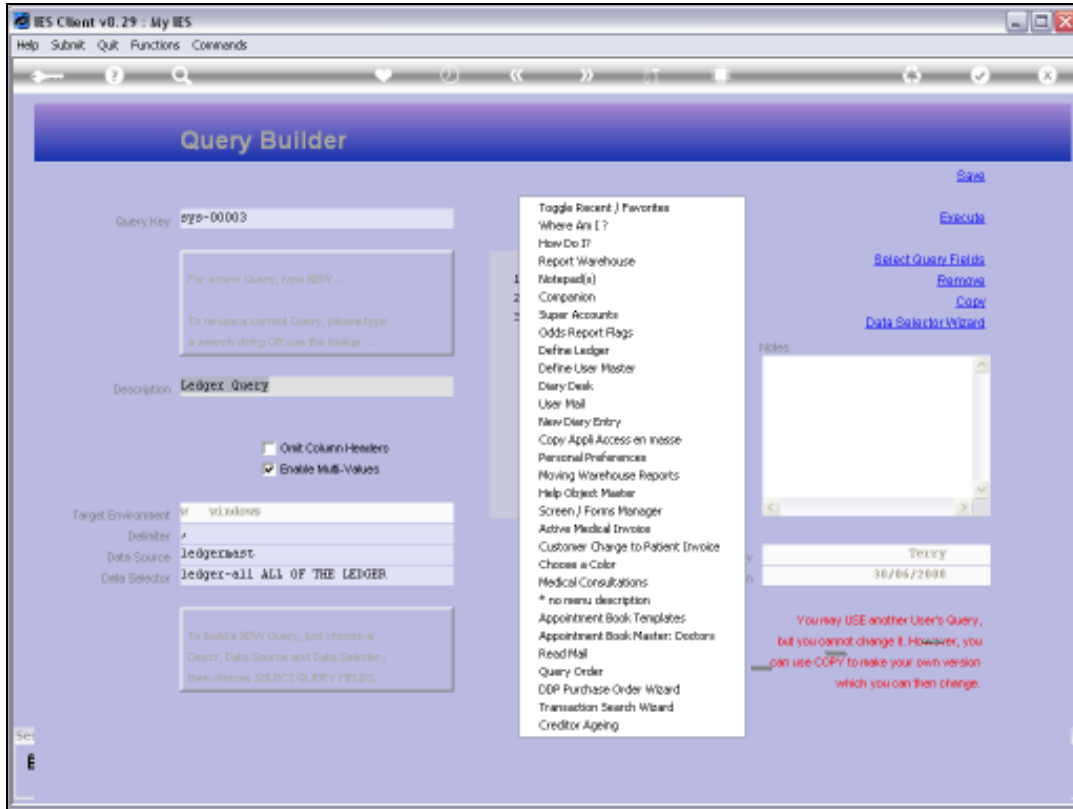




Slide 1

Slide notes: A Data Query is always owned by the User who created the Query.

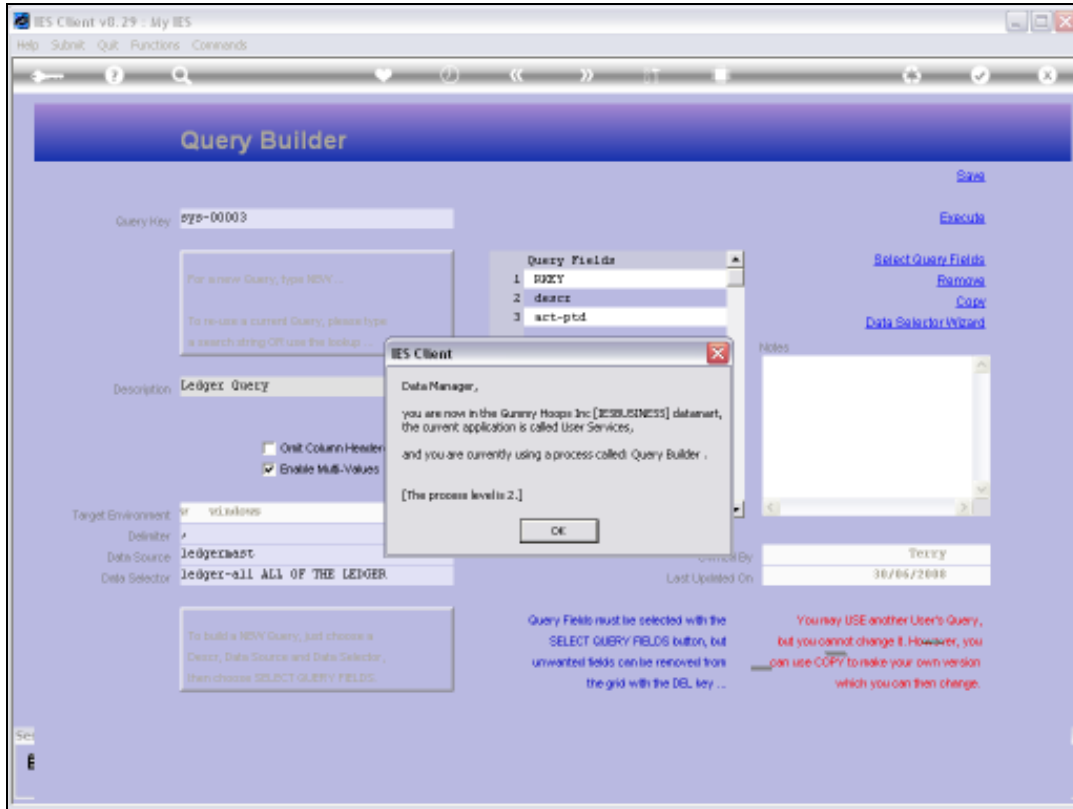


Slide 2

Slide notes: We will use 'where am I' to reveal the current User of this Session.

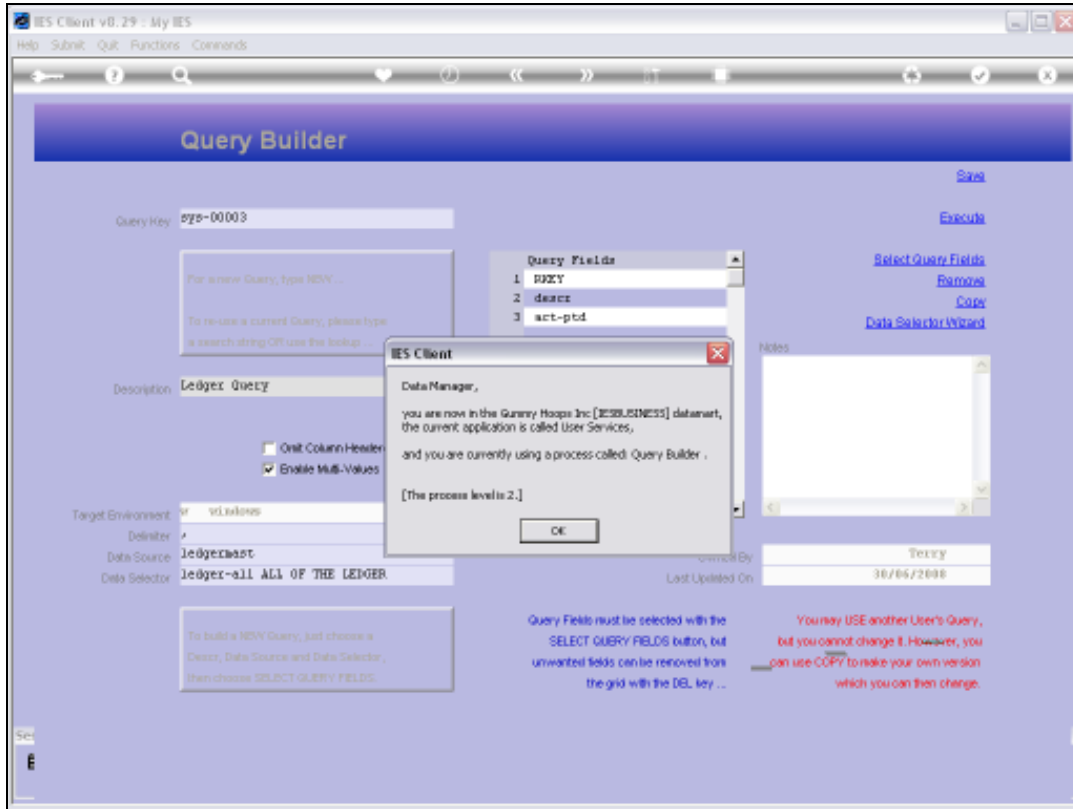


Slide 3
Slide notes:

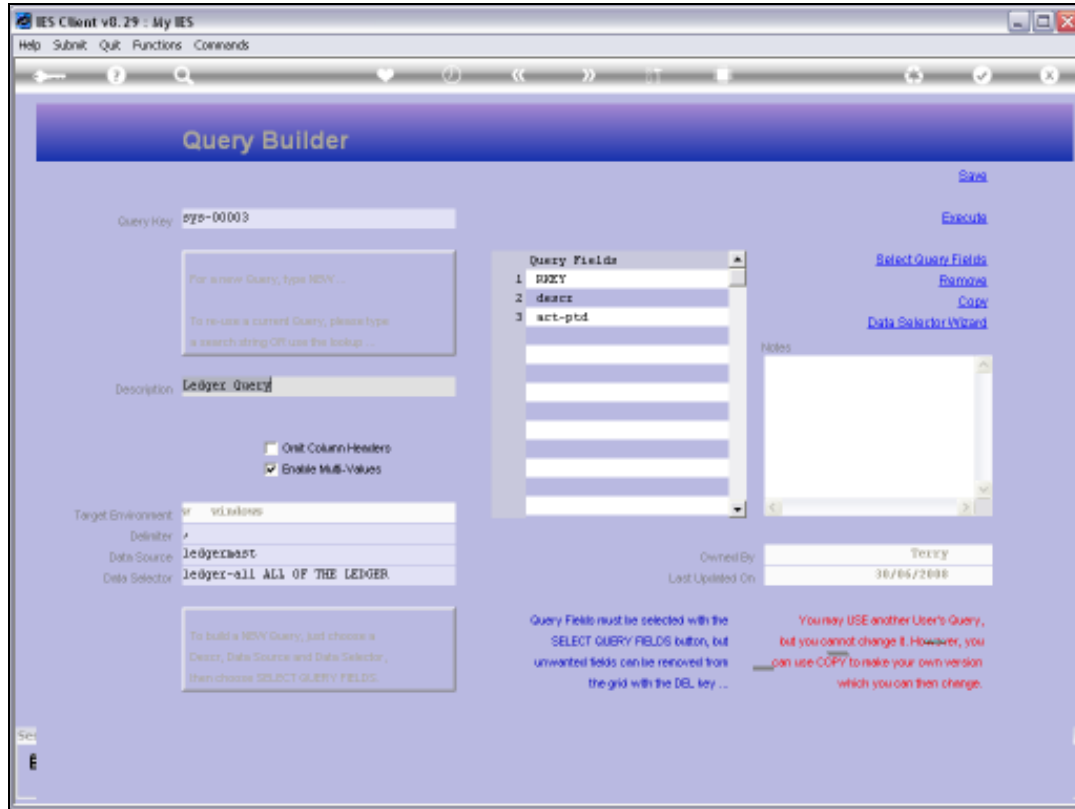


Slide 4

Slide notes: And the User is Data Manager.



Slide 5
Slide notes:



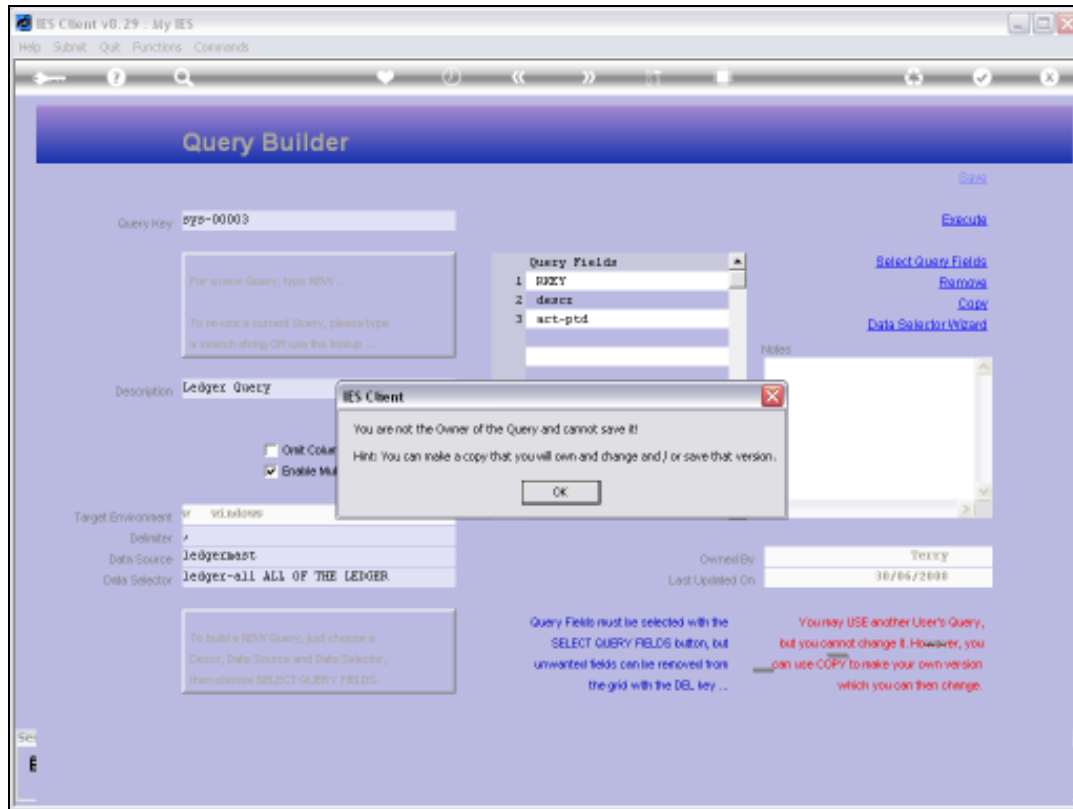
Slide 6

Slide notes: Whereas the owner of this Query is Terry.



Slide 7

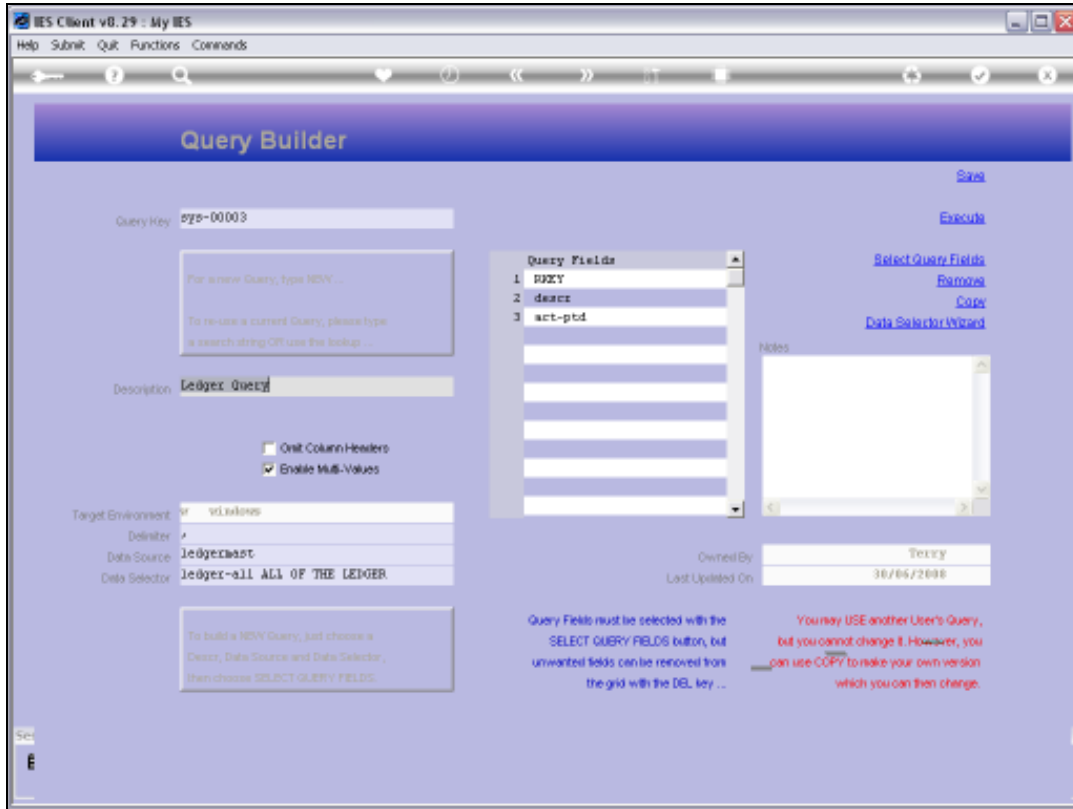
Slide notes: Therefore, Data Manager will not be able to save this Query.



Slide 8

Slide notes: Because only the Owner of the Query may make changes to the Query and save it.

Another User may retrieve the Query, Copy it, even execute it, provided he or she has access to the Data Source and Fields, but the Query Owner's rights remain protected.



Slide 9
Slide notes: