

Slide 1 - Slide 1

IES Client v8.29 : My IES

Help Submit Quit Functions Commands

Query Builder

Save

Execute

Select Query Fields

Remove

Copy

Data Selector Wizard

Query Key

For a new Query, type NEW ...

To re-use a current Query, please type a search string OR use the lookup ...

Description

Omit Column Headers

Enable Multi-Values

Target Environment

Delimiter

Data Source

Data Selector

Query Fields

1

Notes

Owned By

Last Updated On

To build a NEW Query, just choose a Descr, Data Source and Data Selector, then choose SELECT QUERY FIELDS.

Query Fields must be selected with the SELECT QUERY FIELDS button, but unwanted fields can be removed from the grid with the DEL key ...

You may USE another User's Query, but you cannot change it. However, you can use COPY to make your own version which you can then change.

Slide notes

Existing Queries are Queries that have been saved by someone for regular use or re-use. We can just retrieve any such Query on demand, and perform it.

Slide 2 - Slide 2

IES Client v8.29 : My IES

Help Submit Quit Functions Commands

Query Builder

Save

Execute

Select Query Fields

Remove

Copy

Data Selector Wizard

Query Key: ledger

For a new Query, type NEW ...

To re-use a current Query, please type a search string OR use the lookup ...

Description: new query

Omit Column Headers

Enable Multi-Values

Target Environment: windows

Delimiter: /

Data Source:

Data Selector:

Owned By:

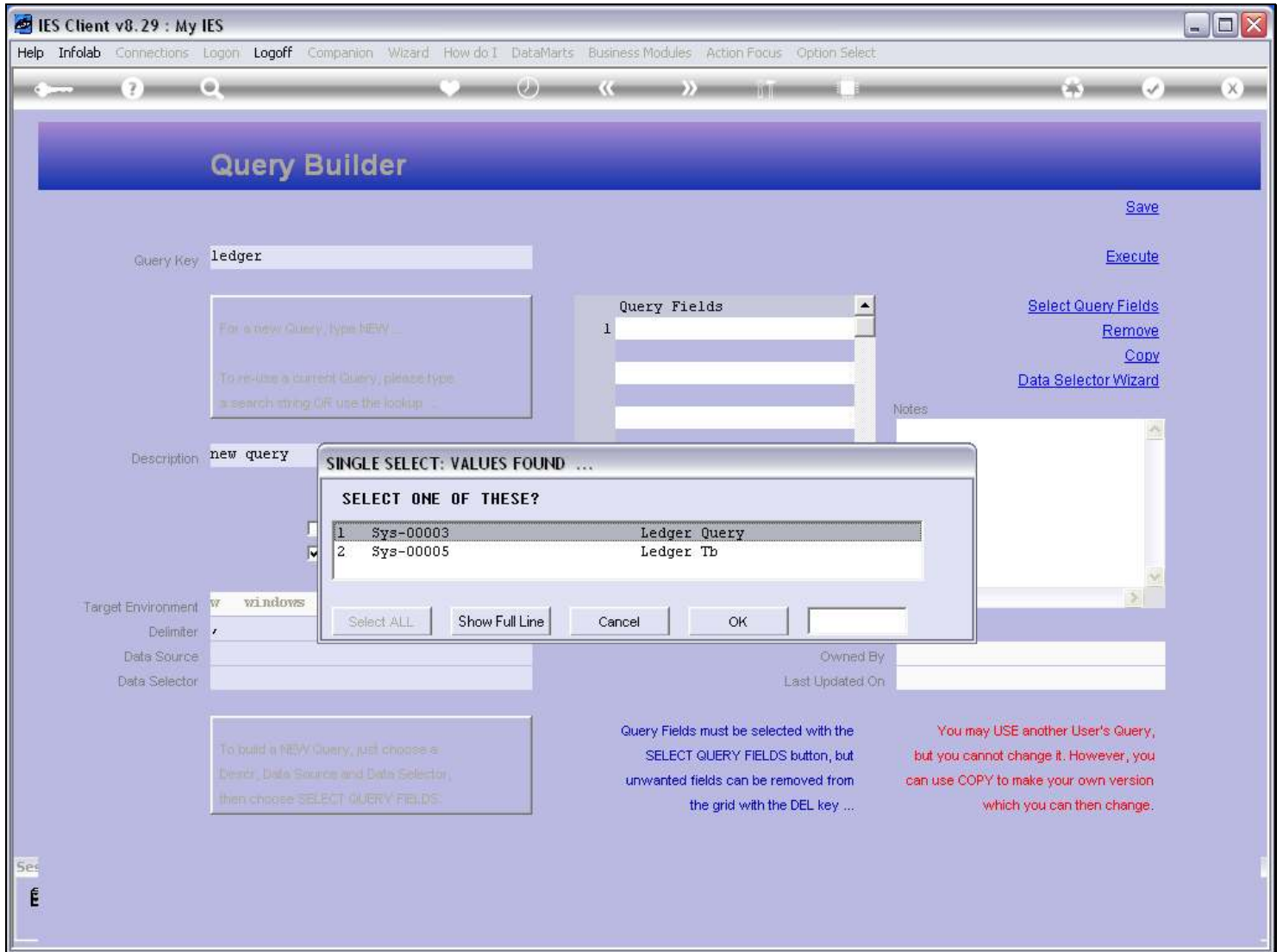
Last Updated On:

Query Fields must be selected with the SELECT QUERY FIELDS button, but unwanted fields can be removed from the grid with the DEL key ...

You may USE another User's Query, but you cannot change it. However, you can use COPY to make your own version which you can then change.

Slide notes

Slide 3 - Slide 3



Slide notes

Slide 4 - Slide 4



Slide notes

Slide 5 - Slide 5

IES Client v8.29 : My IES

Help Submit Quit Functions Commands

Query Builder

Save

Execute

Select Query Fields

Remove

Copy

Data Selector Wizard

Notes

Owned By: System Manager

Last Updated On: 06/08/2010

You may USE another User's Query, but you cannot change it. However, you can use COPY to make your own version which you can then change.

Query Fields must be selected with the SELECT QUERY FIELDS button, but unwanted fields can be removed from the grid with the DEL key ...

To build a NEW Query, just choose a Descr, Data Source and Data Selector, then choose 'SELECT QUERY FIELDS'.

To re-use a current Query, please type a search string OR use the lookup ...

For a new Query, type NEW ...

Query Key: sys-00003

Description: Ledger Query

Target Environment: w windows

Delimiter: /

Data Source: ledgermast

Data Selector: dept-850 DOWNTOWN

Omit Column Headers

Enable Multi-Values

Slide notes

Slide 6 - Slide 6

IES Client v8.29 : My IES

Help Submit Quit Functions Commands

Query Builder

Save

Query Key:

Execute

For a new Query, type NEW ...

To re-use a current Query, please type a search string OR use the lookup ...

Description:

Omit Column Headers

Enable Multi-Values

Target Environment:

Delimiter:

Data Source:

Data Selector:

Query Fields

1	RKEY
2	descr
3	act-ptd

Notes

Owned By:

Last Updated On:

To build a NEW Query, just choose a Descr, Data Source and Data Selector, then choose SELECT QUERY FIELDS.

Query Fields must be selected with the SELECT QUERY FIELDS button, but unwanted fields can be removed from the grid with the DEL key ...

You may USE another User's Query, but you cannot change it. However, you can use COPY to make your own version which you can then change.

Slide notes

An existing Query is like a pre-written Report that we can perform whenever we want to. As long as we have access to the Data Source and Query Fields at the moment, then we can perform the Query.