

## Slide 1 - Slide 1

IES Client v8.29 : My IES

Help Submit Quit Functions Commands

## Query Builder

Query Key:

Save

Execute

Select Query Fields

Remove

Copy

Data Selector Wizard

Notes

Query Fields

1	RKEY
2	descr
3	act-ptd

For a new Query, type NEW ...

To re-use a current Query, please type a search string OR use the lookup ...

Description:

Omit Column Headers

Enable Multi-Values

Target Environment:

Delimiter:

Data Source:

Data Selector:

Owned By:

Last Updated On:

To build a NEW Query, just choose a Descr, Data Source and Data Selector, then choose SELECT QUERY FIELDS.

Query Fields must be selected with the SELECT QUERY FIELDS button, but unwanted fields can be removed from the grid with the DEL key ...

You may USE another User's Query, but you cannot change it. However, you can use COPY to make your own version which you can then change.

## Slide notes

Every query works with a delimiter. This is the value separator for the data when put into the spreadsheet, and the comma is the most used delimiter and therefore the default. Usually, there is nothing we need to do, because the system already installs the comma.

## Slide 2 - Slide 2

## Slide notes

### Slide 3 - Slide 3

### Slide notes

## Slide 4 - Slide 4

The screenshot shows a software window titled "IES Client v8.29 : My IES". The window contains a help document for the "QUERY BUILDER" function. The document text is as follows:

**Document**

Next

CURRENT PROCESS = [QRY] QUERY BUILDER

The default delimiter is 'comma';

The receiving object will often require or at least allow you to specify a data delimiter to recognize what you use as a field separator in order that the data may automatically be correctly placed inside a spreadsheet or other data document; common delimiters are ', ' '; ' : ' etc.

Hint: Users sometimes have regional settings on their MS Excel, that indicate ";" as the list separator. In this case, it is recommended that you use this delimiter, and record it also at "My Settings".

**Function**

Data Queries, Data Exports and Reports.

**Caution**

Many Users may operate the QueryBuilder simultaneously, but any 1 User may operate only a single instance of it at a time.

**Description**

Use Query Builder to query Data Files with ease, where you access rights permit.

Data Queries may be exported seamlessly to text files, spreadsheets

Make a copy - [Text Copy](#)

Search Phrase

Search the IES web on-line documentation by typing a phrase, then choose "search".

[Search](#)

Doc Key tt\*userdirect

## Slide notes

But as the Help explains, Users sometimes have regional settings on their spreadsheets that indicate a different delimiter, for example the semi-colon.

## Slide 5 - Slide 5

IES Client v8.29 : My IES

Help Submit Quit Functions Commands

## Query Builder

Save

Execute

Query Key:

For a new Query, type NEW ...

To re-use a current Query, please type a search string OR use the lookup ...

Description:

Omit Column Headers

Enable Multi-Values

Target Environment:

Delimiter:

Data Source:

Data Selector:

To build a NEW Query, just choose a Descr, Data Source and Data Selector, then choose 'SELECT QUERY FIELDS'.

Query Fields	
1	RKEY
2	descr
3	act-ptd

Select Query Fields

Remove

Copy

Data Selector Wizard

Notes

Owned By:

Last Updated On:

Query Fields must be selected with the SELECT QUERY FIELDS button, but unwanted fields can be removed from the grid with the DEL key ...

You may USE another User's Query, but you cannot change it. However, you can use COPY to make your own version which you can then change.

## Slide notes

If that be the case, then of course we will indicate the different delimiter, and it is recommended in that case also to update 'My Settings' so that the system knows when we use automatic data queries, to use a different delimiter for us.

### Slide 6 - Slide 6

### Slide notes

### Slide 7 - Slide 7

IES Client v8.29 : My IES

Help Infolab Connections Logon Logoff Companion Wizard How do I DataMarts Business Modules Action Focus Option Select

## Query Builder

Query Key:

Description:

Target Environment:

Delimiter:

Data Source:

Data Selector:

Query Fields
1 RKEY
2 descr
3 act-ptd

Owned By:

Last Updated On:

Support and Assistance  
Where Am I?  
Talk More  
Talk Less  
Dial Pad  
Query Builder  
My Mailbox  
My Diary  
My Timesheets  
My Settings  
My Report Warehouse  
My Notepad(s)  
My Companion  
How do I?  
Business Intelligence

[Save](#)  
[Execute](#)  
[Select Query Fields](#)  
[Remove](#)  
[Copy](#)  
[Data Selector Wizard](#)

To build a NEW Query, just choose a Descr, Data Source and Data Selector, then choose 'SELECT QUERY FIELDS'

Query Fields must be selected with the SELECT QUERY FIELDS button, but unwanted fields can be removed from the grid with the DEL key ...

You may USE another User's Query, but you cannot change it. However, you can use COPY to make your own version which you can then change.

### Slide notes

Slide 8 - Slide 8

IES Client v8.29 : My IES

Help Infolab Connections Logon Logoff Companion Wizard How do I DataMarts Business Modules Action Focus Option Select

### Query Builder

Query Key:

Description:

Target Environment:

Delimiter:

Data Source:

Data Selector:

Query Fields	
1	RKEY
2	descr
3	act-ptd

Owned By:

Last Updated On:

Support and Assistance  
Where Am I?  
Talk More  
Talk Less  
Dial Pad  
Query Builder  
My Mailbox  
My Diary  
My Timesheets  
My Settings  
My Report Warehouse  
My Notepad(s)  
My Companion  
How do I?  
Business Intelligence

Save  
Execute  
Select Query Fields  
Remove  
Copy  
Data Selector Wizard

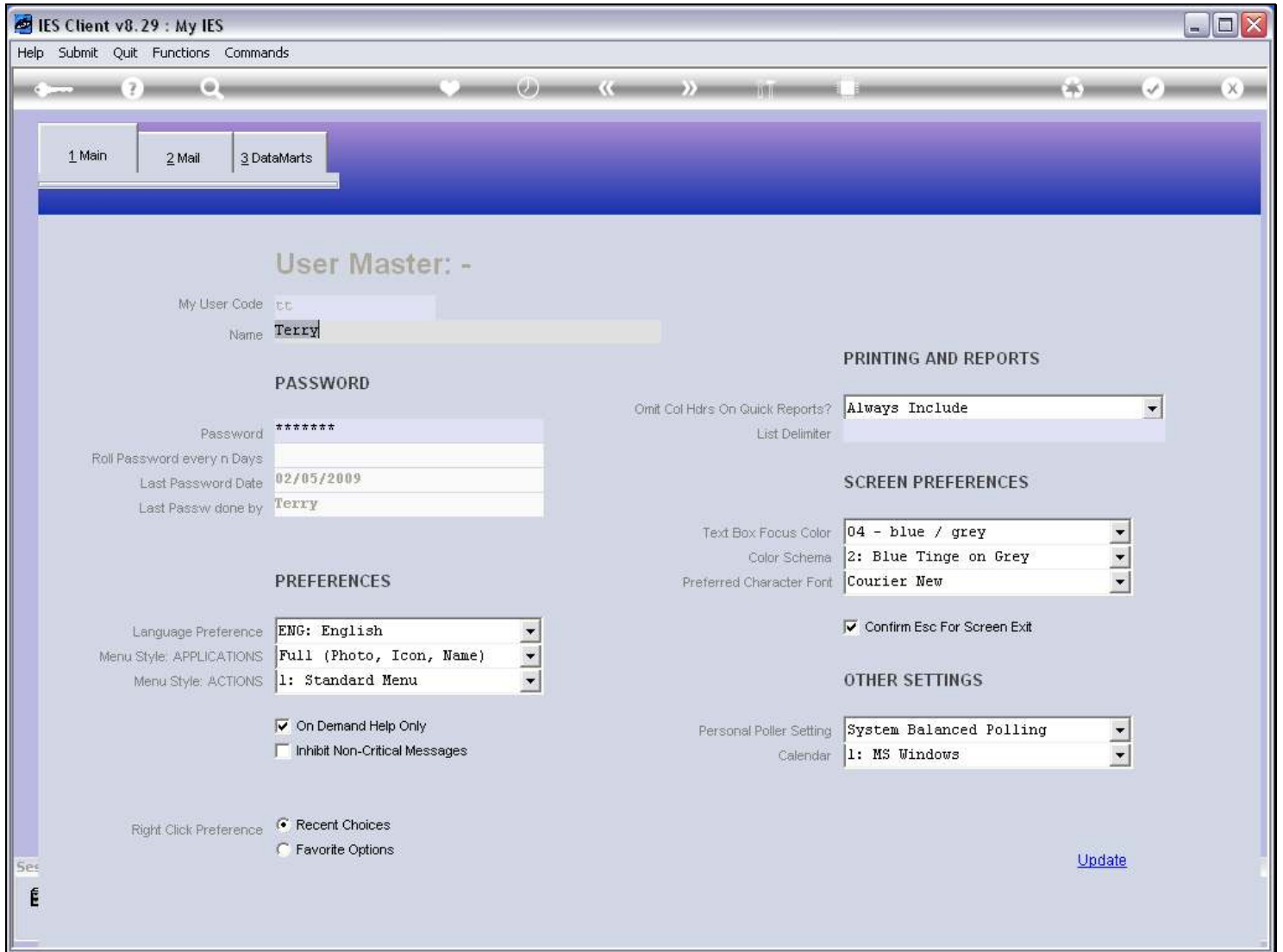
Query Fields must be selected with the SELECT QUERY FIELDS button, but unwanted fields can be removed from the grid with the DEL key ...

You may USE another User's Query, but you cannot change it. However, you can use COPY to make your own version which you can then change.

Slide notes

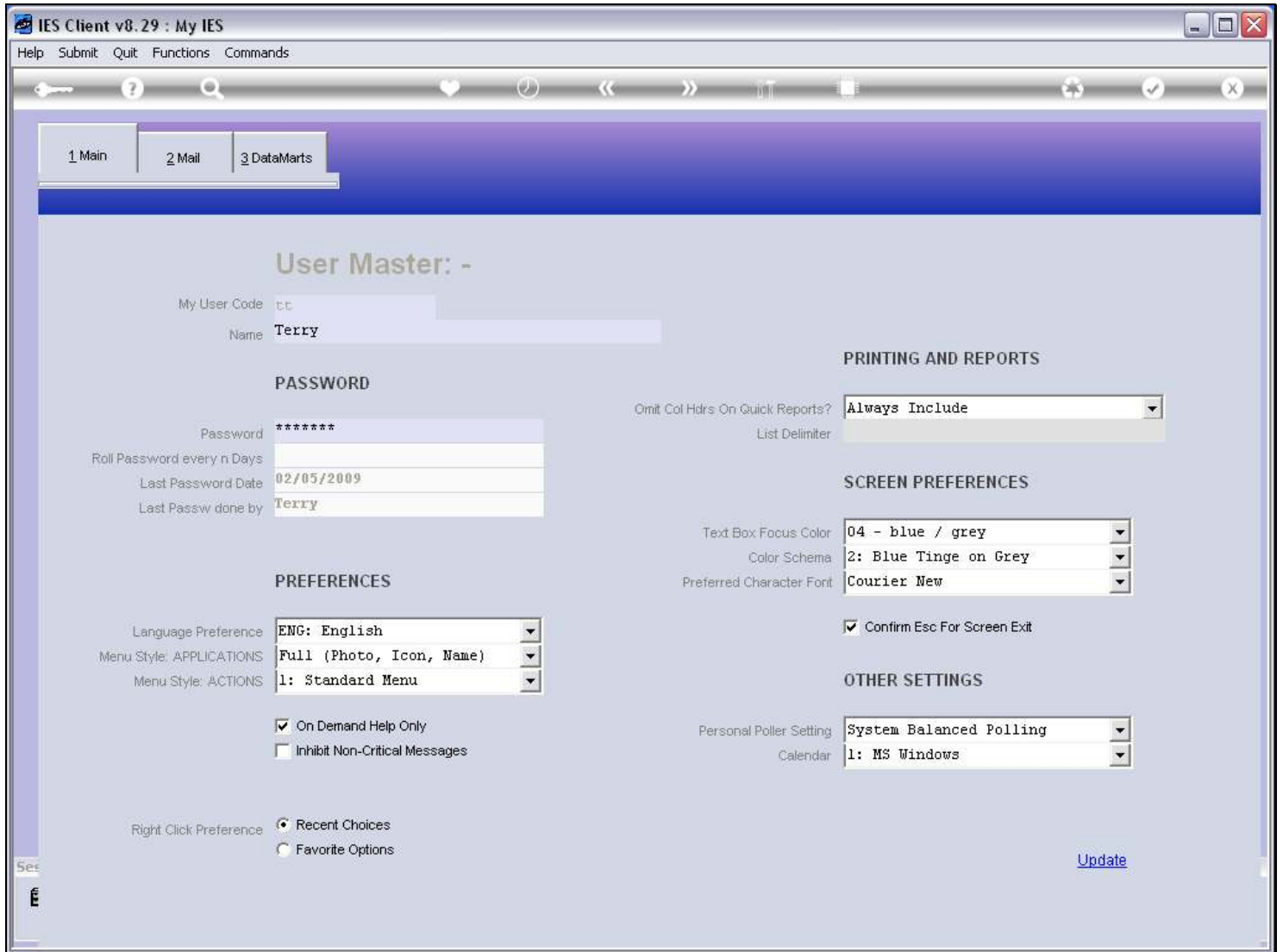


Slide 9 - Slide 9



Slide notes

Slide 10 - Slide 10



Slide notes