

## Slide 1 - Slide 1

IES Client v8.29 : My IES

Help Submit Quit Functions Commands

## Query Builder

Query Key:

For a new Query, type NEW ...

To re-use a current Query, please type a search string OR use the lookup ...

Description:

Omit Column Headers

Enable Multi-Values

Target Environment:

Delimiter:

Data Source:

Data Selector:

Query Fields

1	RKEY
2	descr
3	act-ptd

Notes

Owned By:

Last Updated On:

Query Fields must be selected with the SELECT QUERY FIELDS button, but unwanted fields can be removed from the grid with the DEL key ...

You may USE another User's Query, but you cannot change it. However, you can use COPY to make your own version which you can then change.

## Slide notes

Every Query must have a Data Source. That is where the information is going to come from. Even though a Data Source can have Names or Fields that get information from yet other Data Sources, there is still always a 1st and primary Data Source. This Data Source we can lookup from the available Data Sources that are enabled for Query Builder.

## Slide 2 - Slide 2

IES Client v8.29 : My IES

Help Submit Quit Functions Commands

## Query Builder

Save

Execute

Select Query Fields

Remove

Copy

Data Selector Wizard

Notes

Owned By: Terry

Last Updated On: 06/08/2010

You may USE another User's Query, but you cannot change it. However, you can use COPY to make your own version which you can then change.

Query Fields must be selected with the SELECT QUERY FIELDS button, but unwanted fields can be removed from the grid with the DEL key ...

To build a NEW Query, just choose a Descr, Data Source and Data Selector, then choose 'SELECT QUERY FIELDS'.

To re-use a current Query, please type a search string OR use the lookup ...

For a new Query, type NEW ...

Query Key: tt\*1555965606

Description: Ledger Query

Target Environment: w windows

Delimiter: /

Data Source: ledgermast

Data Selector: dept-850 DOWNTOWN

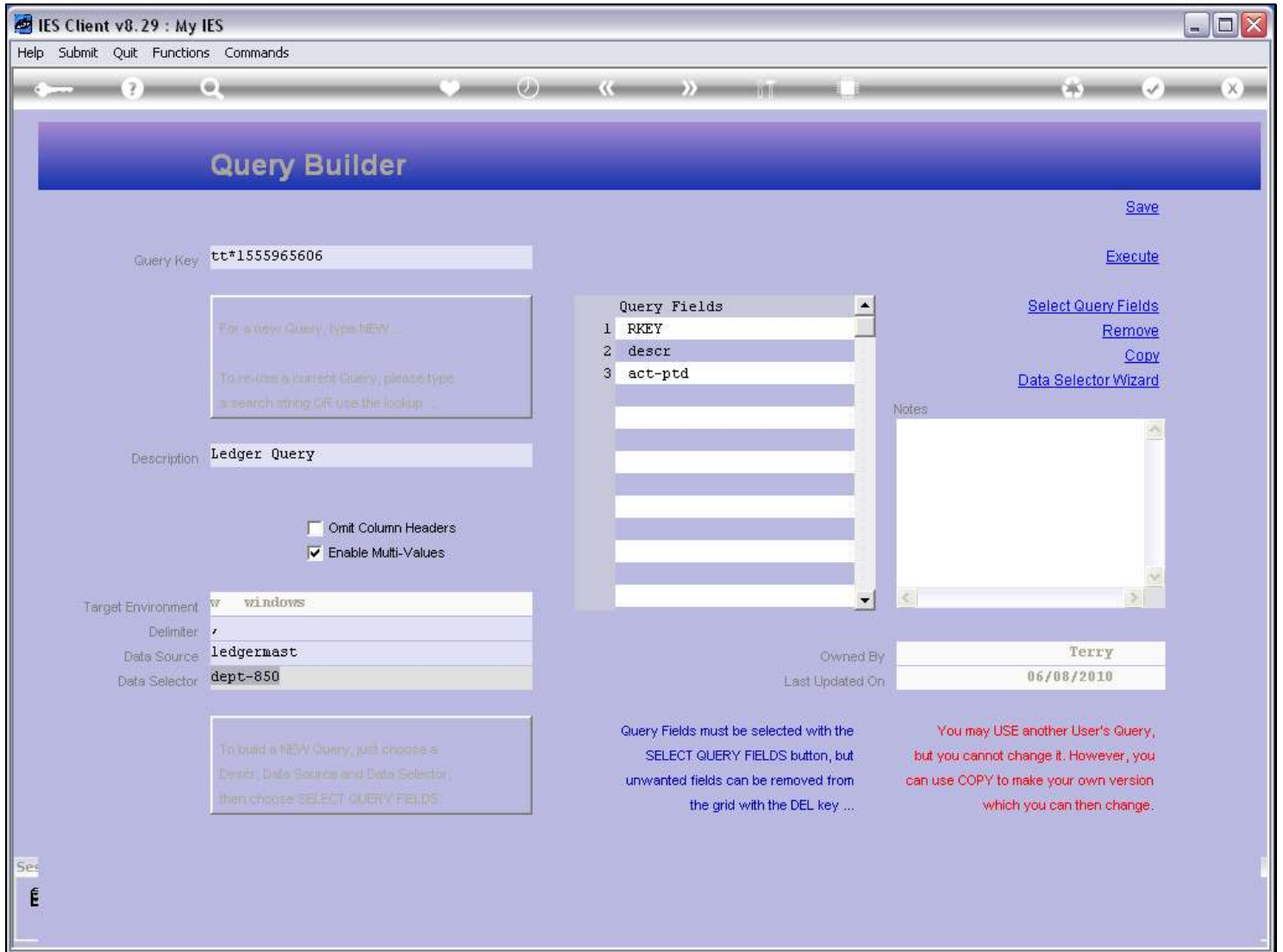
Omit Column Headers  
 Enable Multi-Values

Query Fields	
1	RKEY
2	descr
3	act-ptd

## Slide notes

The Data Selector is always one that works with the specified Data Source. If we change the Data Source, then we have to re-select the Data Selector as well.

Slide 3 - Slide 3



Slide notes

And the same for the Data Fields. They are bound to the Data Source.

### Slide 4 - Slide 4

IES Client v8.29 : My IES

Help Submit Quit Functions Commands

## Query Builder

Save

Execute

Select Query Fields

Remove

Copy

Data Selector Wizard

Query Key:

For a new Query, type NEW ...

To re-use a current Query, please type a search string OR use the lookup ...

Description:

Omit Column Headers

Enable Multi-Values

Target Environment:

Delimiter:

Data Source:

Data Selector:

To build a NEW Query, just choose a Descr, Data Source and Data Selector, then choose 'SELECT QUERY FIELDS'

Query Fields	
1	RKEY
2	descr
3	act-ptd

Notes

Owned By:

Last Updated On:

Next Pre Add Ins Ed Del

Query Fields must be selected with the SELECT QUERY FIELDS button, but unwanted fields can be removed from the grid with the DEL key ...

You may USE another User's Query, but you cannot change it. However, you can use COPY to make your own version which you can then change.

### Slide notes

Slide 5 - Slide 5

IES Client v8.29 : My IES

Help Submit Quit Functions Commands

### Query Builder

Save

Execute

Select Query Fields

Remove

Copy

Data Selector Wizard

Query Key:

Description:

Target Environment:

Delimiter:

Data Source:

Data Selector:

Omit Column Headers

Enable Multi-Values

Query Fields	
1	RKEY
2	descr
3	act-ptd

Notes

Owned By:

Last Updated On:

To build a NEW Query, just choose a Descr, Data Source and Data Selector, then choose 'SELECT QUERY FIELDS'.

Query Fields must be selected with the SELECT QUERY FIELDS button, but unwanted fields can be removed from the grid with the DEL key ...

You may USE another User's Query, but you cannot change it. However, you can use COPY to make your own version which you can then change.

Slide notes

### Slide 6 - Slide 6

### Slide notes

### Slide 7 - Slide 7

IES Client v8.29 : My IES

Help Submit Quit Functions Commands

## Query Builder

Save

Execute

Select Query Fields

Remove

Copy

Data Selector Wizard

Query Key:

For a new Query, type NEW ...

To re-use a current Query, please type a search string OR use the lookup ...

Description:

Omit Column Headers

Enable Multi-Values

Target Environment:

Delimiter:

Data Source:

Data Selector:  Lookup?  
Recent Values

Query Fields	
1	RKEY
2	descr
3	act-ptd

Notes

Owned By:

Last Updated On:

To build a NEW Query, just choose a Descr, Data Source and Data Selector, then choose 'SELECT QUERY FIELDS'.

Query Fields must be selected with the SELECT QUERY FIELDS button, but unwanted fields can be removed from the grid with the DEL key ...

You may USE another User's Query, but you cannot change it. However, you can use COPY to make your own version which you can then change.

### Slide notes



### Slide 8 - Slide 8

### Slide notes



Slide 9 - Slide 9

Slide notes

### Slide 10 - Slide 10

The screenshot shows the IES Client v8.29: My IES interface. The main window is titled "Query Builder" and contains a "Query Key" field with the value "tt\*1555965606". Below this is a "Query Fields" list with one item: "1 RKFY". A "SINGLE SELECT: DATA SELECTION" dialog box is open, displaying a table of data sources.

FILENAME	:DESCRIPTION
1 Aforecastd	Asset Depreciation Forecast
2 Atmasti	Asset Items
3 Atmast	Asset Register
4 Diary	Diary
5 Elecrecov02	Elec Recoveries
6 Ecout	Intra Transfer Outbound (exchange)
7 Ledgermast	Ledger Master (gl)
8 Payroll06	Payroll Results
9 Persmaster	Personnel Records
10 Podirects	Po Direct Item Codes
11 Ctosteureresult	Teu Throughput Results
12 Ilusers	User Master

Below the table are buttons for "Select ALL", "Show Full Line", "Cancel", and "OK".

At the bottom of the dialog box, there are instructions: "Select Data Source and Data Selector, then choose 'SELECT QUERY FIELDS'".

Below the dialog box, there are additional instructions: "SELECT QUERY FIELDS button, but unwanted fields can be removed from the grid with the DEL key ... but you cannot change it; however, you can use COPY to make your own version which you can then change."

### Slide notes

### Slide 11 - Slide 11

IES Client v8.29 : My IES

Help Submit Quit Functions Commands

## Query Builder

Save

Execute

Select Query Fields

Remove

Copy

Data Selector Wizard

Notes

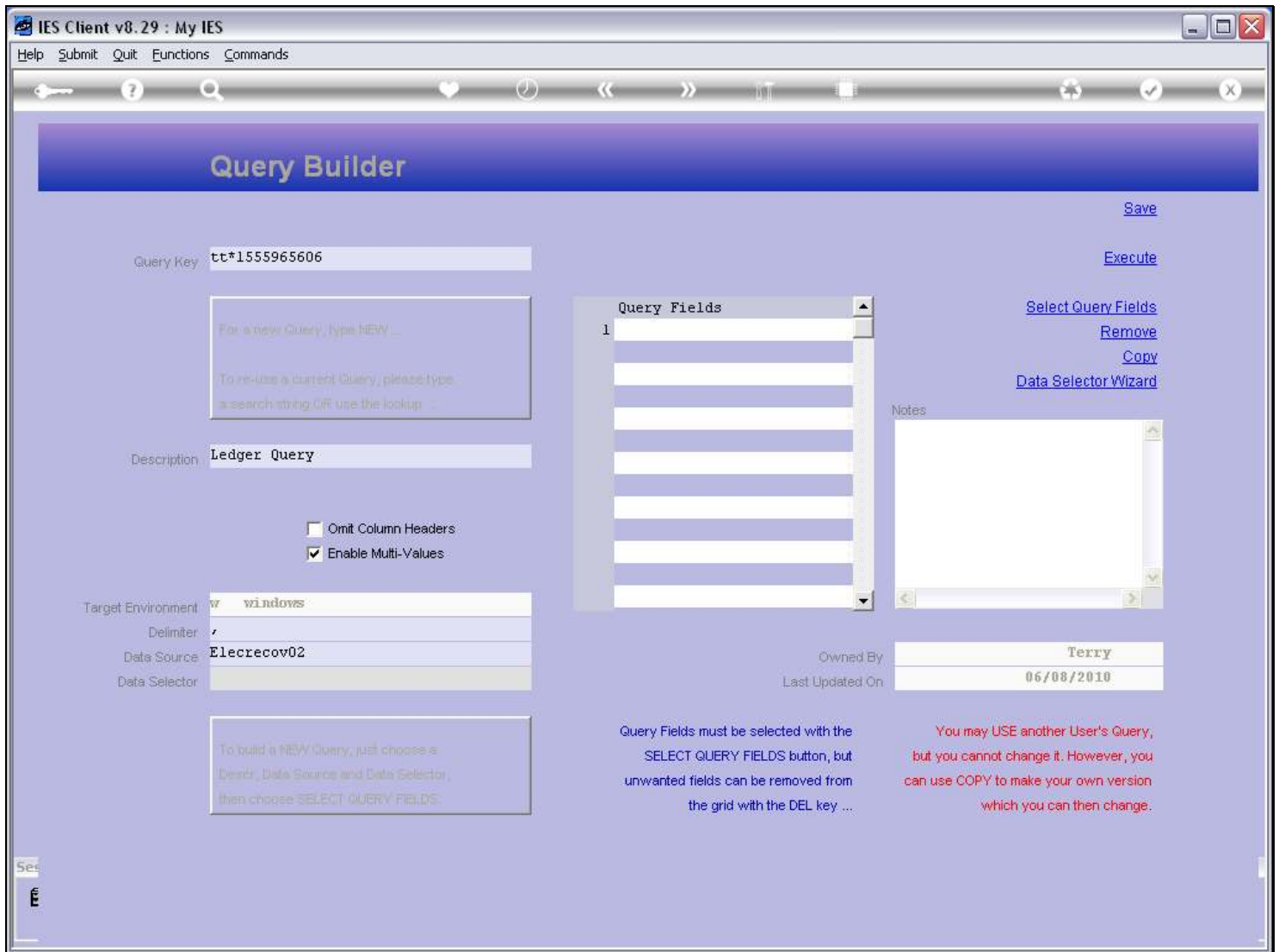
Owned By: Terry

Last Updated On: 06/08/2010

You may USE another User's Query, but you cannot change it. However, you can use COPY to make your own version which you can then change.

### Slide notes

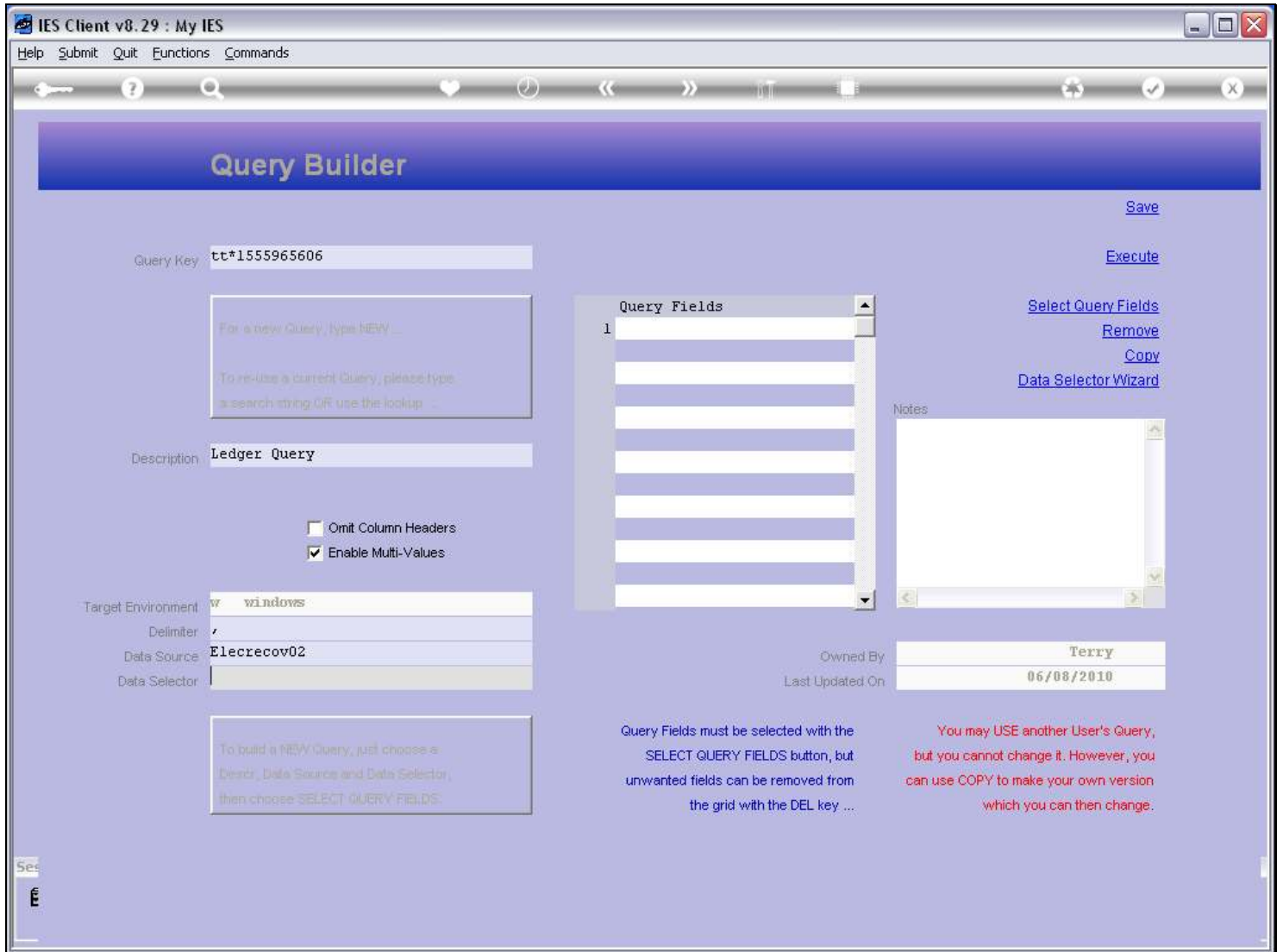
## Slide 12 - Slide 12



## Slide notes

The moment we select a new Data Source, we lose our Data Fields and Data Selector choices, because they were bound to the prior Data Source. Therefore, we have to re-select those.

### Slide 13 - Slide 13



### Slide notes