

Slide 1 - Slide 1

IES Client v8.29 : My IES

Help Submit Quit Functions Commands

Query Builder

Query Key:

Save

Execute

Select Query Fields

Remove

Copy

Data Selector Wizard

For a new Query, type NEW ...

To re-use a current Query, please type a search string OR use the lookup ...

Description:

Omit Column Headers

Enable Multi-Values

Target Environment:

Delimiter:

Data Source:

Data Selector:

Owned By:

Last Updated On:

Notes

To build a NEW Query, just choose a Descr, Data Source and Data Selector, then choose SELECT QUERY FIELDS.

Query Fields must be selected with the SELECT QUERY FIELDS button, but unwanted fields can be removed from the grid with the DEL key ...

You may USE another User's Query, but you cannot change it. However, you can use COPY to make your own version which you can then change.

Slide notes

A Data Query MUST have a Data Selector, and the Data Selector will operate on the selected Data Source.

Slide 2 - Slide 2

IES Client v8.29 : My IES

Help Submit Quit Functions Commands

Query Builder

Save

Execute

Select Query Fields

Remove

Copy

Data Selector Wizard

Query Key:

Description:

Target Environment:

Delimiter:

Data Source:

Data Selector:

Omit Column Headers

Enable Multi-Values

Owned By:

Last Updated On:

Query Fields must be selected with the SELECT QUERY FIELDS button, but unwanted fields can be removed from the grid with the DEL key ...

You may USE another User's Query, but you cannot change it. However, you can use COPY to make your own version which you can then change.

Slide notes

In our example here, the Data Source is the General Ledger Master, so therefore when we use the lookup function for the Data Selector field, then the system will show Data Selectors for this Data Source.

Slide 3 - Slide 3

Slide notes

Slide 4 - Slide 4

IES Client v8.29 : My IES

Help Submit Quit Functions Commands

Query Builder

Save

Query Key:

Execute

Select Query Fields

Remove

Copy

Data Selector Wizard

Notes

Owned By: Terry

Last Updated On: 30/06/2008

You may USE another User's Query, but you cannot change it. However, you can use COPY to make your own version which you can then change.

Lookup ?

Recent Values

To build a NEW Query, just choose a Descr, Data Source and Data Selector, then choose 'SELECT QUERY FIELDS'.

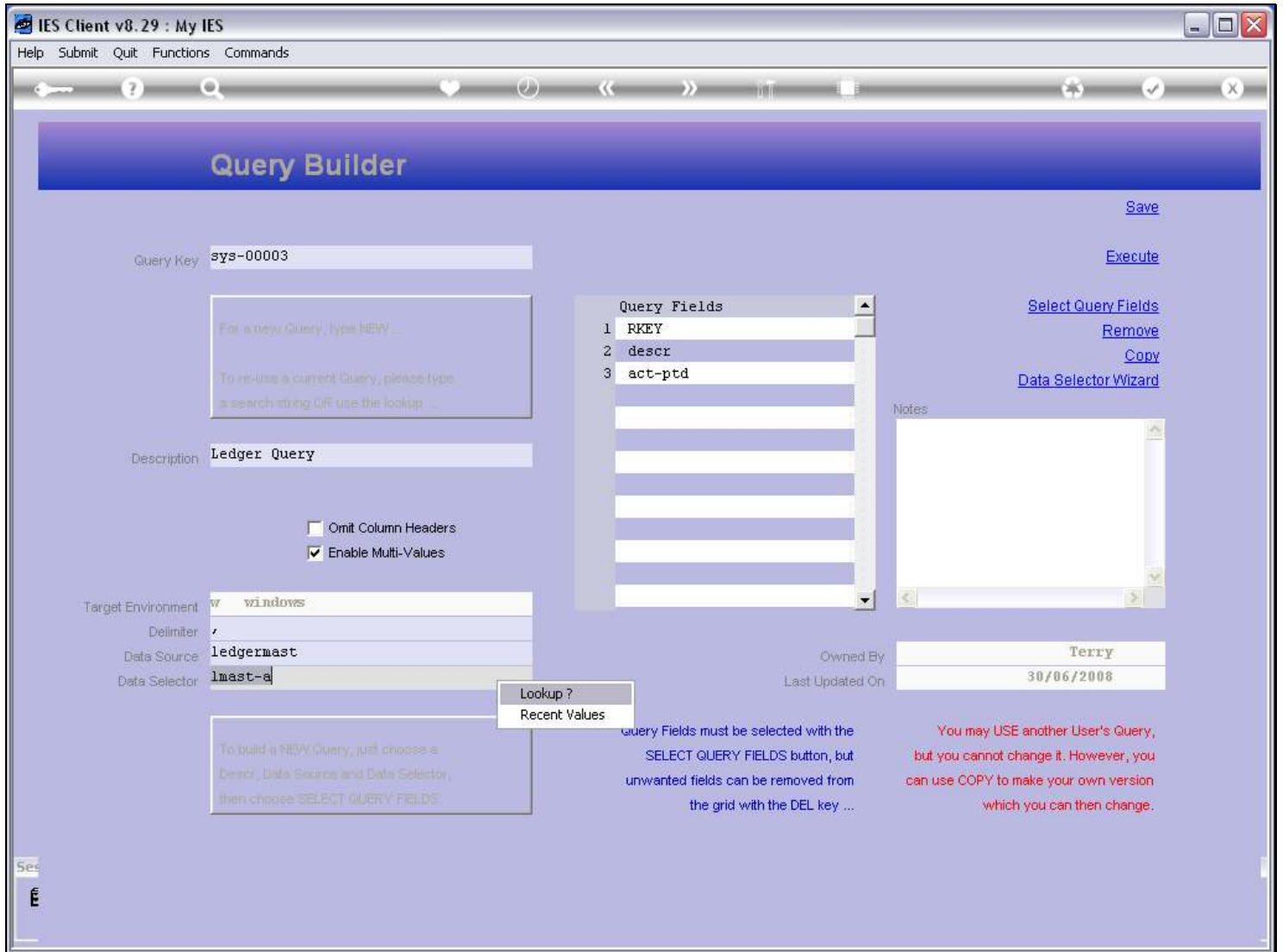
Query Fields must be selected with the SELECT QUERY FIELDS button, but unwanted fields can be removed from the grid with the DEL key ...

Se

E

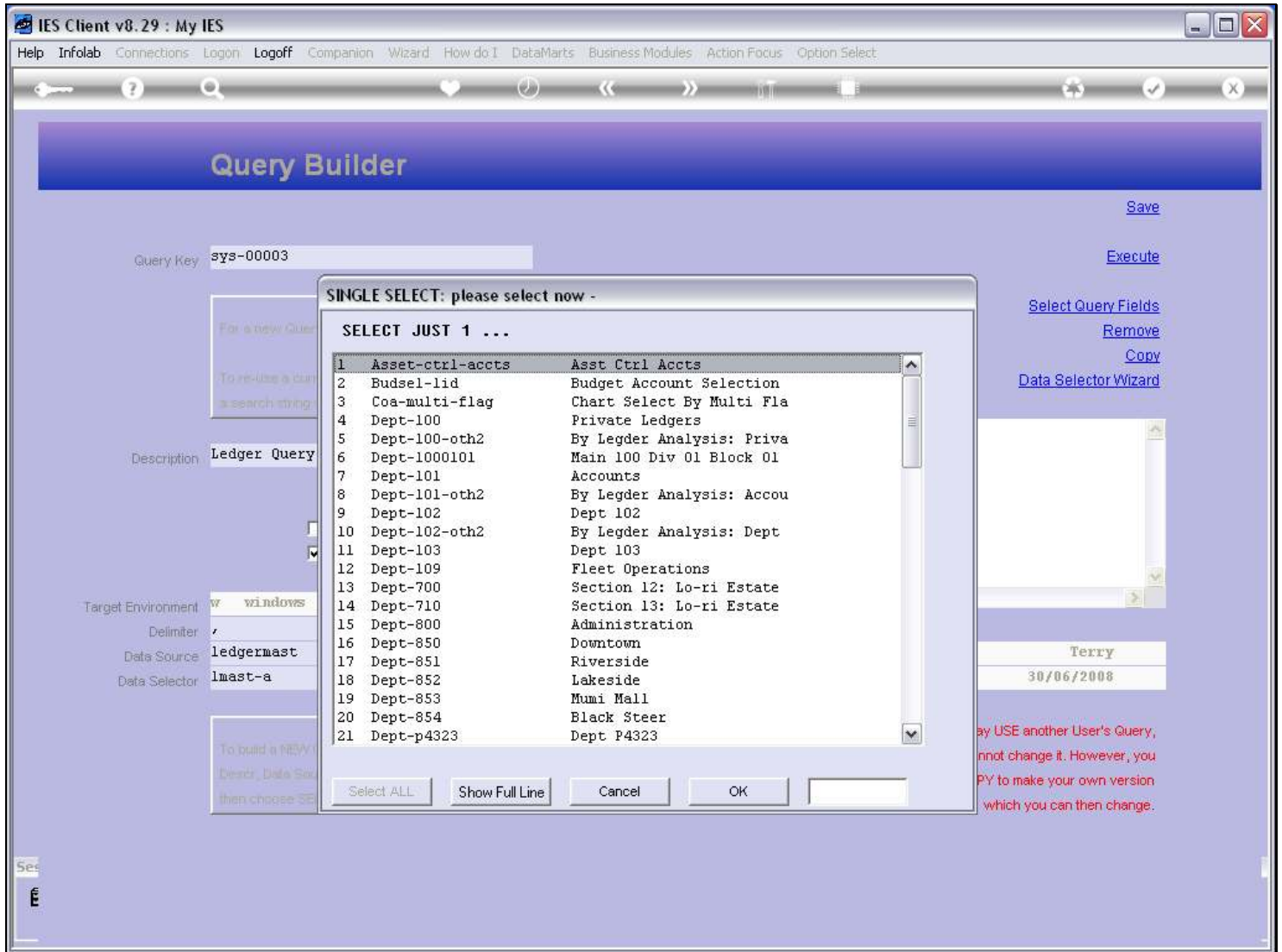
Slide notes

Slide 5 - Slide 5



Slide notes

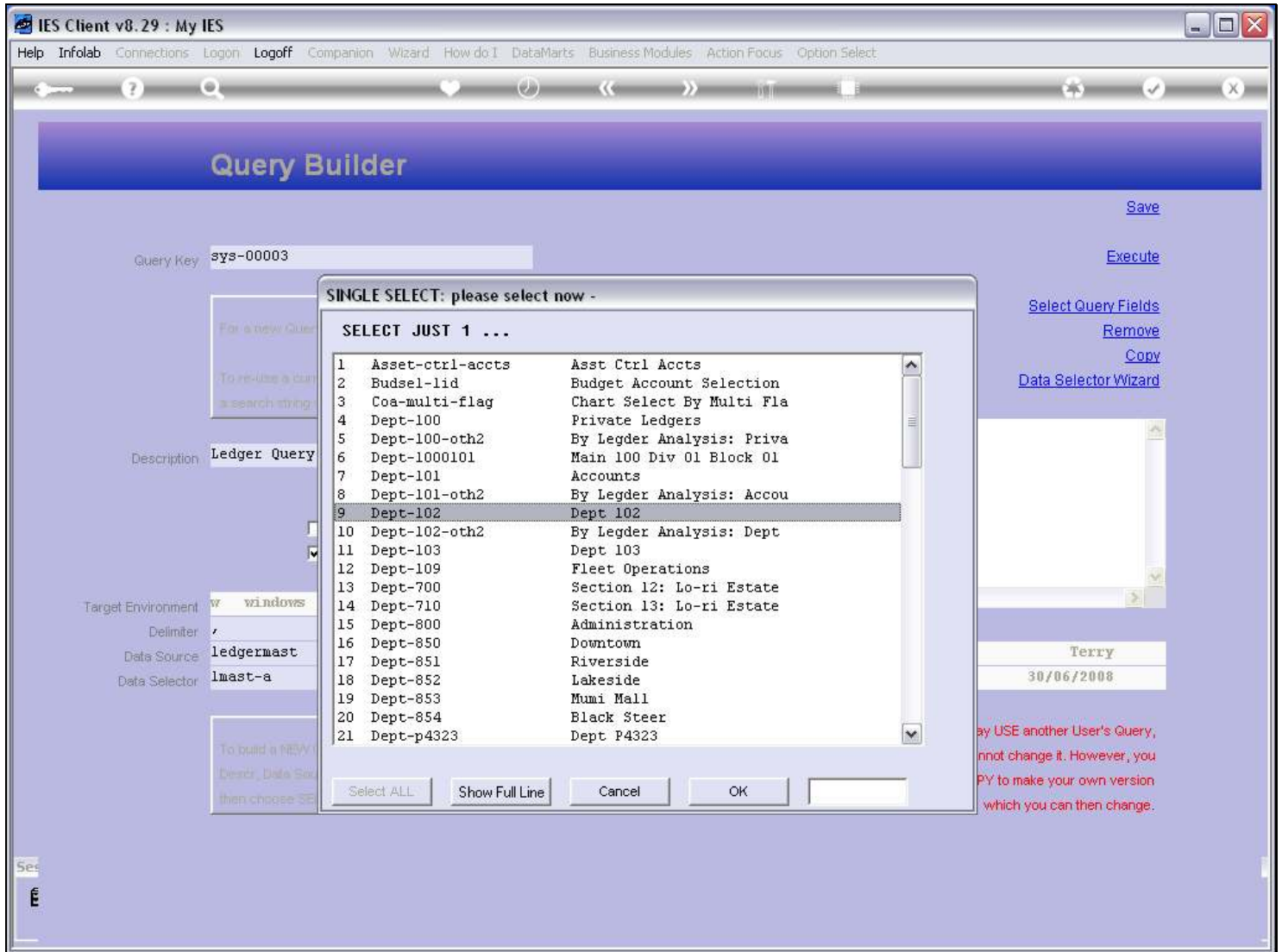
Slide 6 - Slide 6



Slide notes

Each Data Selector has different selection criteria, i.e. rules that will determine which records, or in this case, Accounts, will be selected.

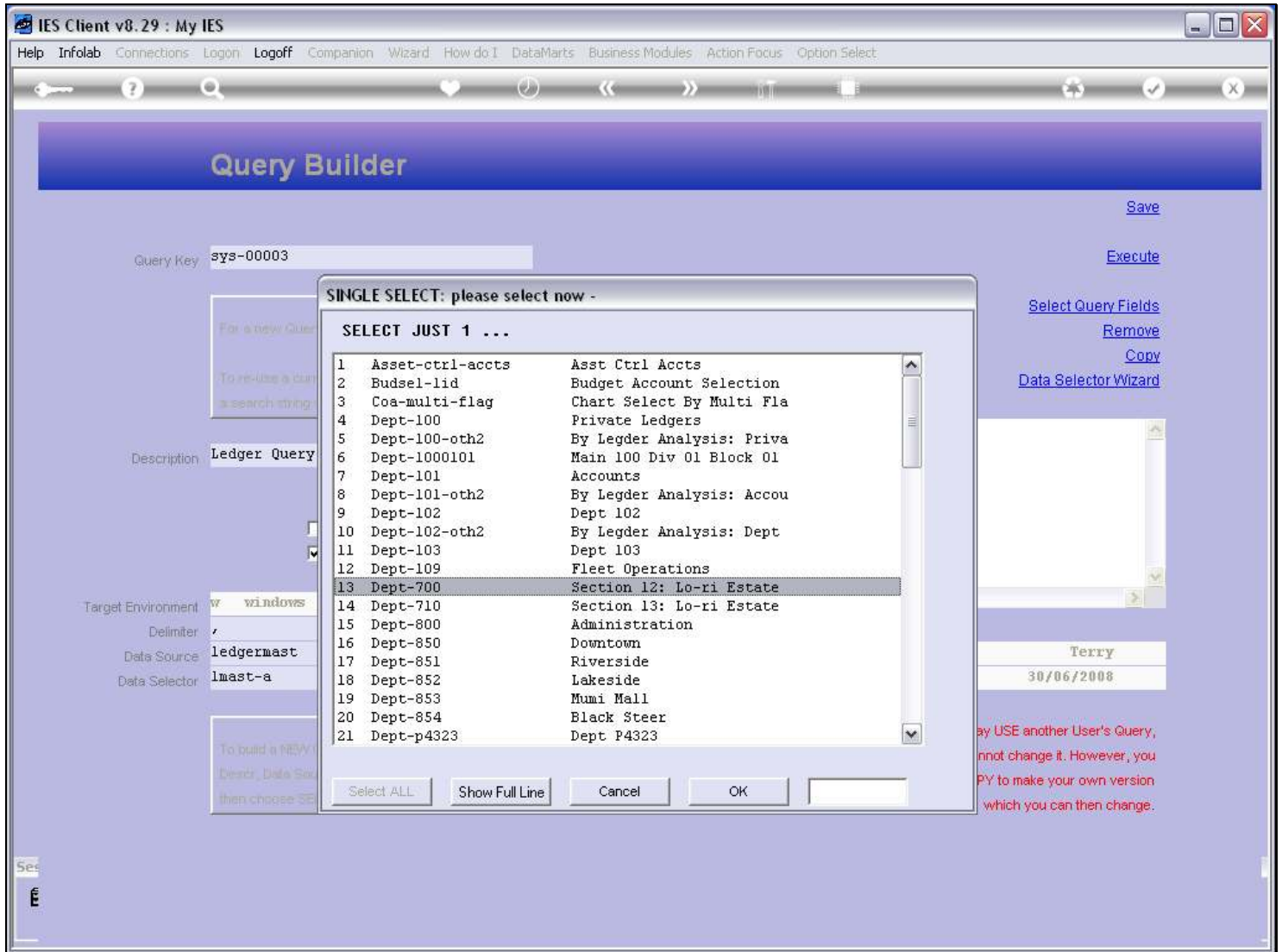
Slide 7 - Slide 7



Slide notes

For example, the Data Selector for Department 102 will select all the Accounts in that Department.

Slide 8 - Slide 8



Slide notes

Slide 9 - Slide 9

Slide notes

Slide 10 - Slide 10

IES Client v8.29 : My IES

Help Submit Quit Functions Commands

Query Builder

Save

Query Key:

Execute

For a new Query, type NEW ...

To re-use a current Query, please type a search string OR use the lookup ...

Description:

Omit Column Headers

Enable Multi-Values

Target Environment:

Delimiter:

Data Source:

Data Selector:

To build a NEW Query, just choose a Descr, Data Source and Data Selector, then choose 'SELECT QUERY FIELDS'

Query Fields	
1	RKEY
2	descr
3	act-ptd

Notes

Owned By:

Last Updated On:

Select Query Fields

Remove

Copy

Data Selector Wizard

You may USE another User's Query, but you cannot change it. However, you can use COPY to make your own version which you can then change.

Select

Slide notes

And so we always choose the most appropriate Data Selector, that will allow us to apply the selection criteria we wish to apply for the correct data selection. In some cases, we may want to select all records in a Data Source, while in other cases we may want to select only certain records.