

Slide 1 - Slide 1

IES Client v8.29 : My IES

Help Submit Quit Functions Commands

Query Builder

Save

Execute

Query Key:

For a new Query, type NEW ...

To re-use a current Query, please type a search string OR use the lookup ...

Description:

Omit Column Headers

Enable Multi-Values

Target Environment:

Delimiter:

Data Source:

Data Selector:

Owned By:

Last Updated On:

Query Fields

1	RKEY
2	descr
3	act-ptd

Select Query Fields

Remove

Copy

Data Selector Wizard

Notes

To build a NEW Query, just choose a Descr, Data Source and Data Selector, then choose SELECT QUERY FIELDS.

Query Fields must be selected with the SELECT QUERY FIELDS button, but unwanted fields can be removed from the grid with the DEL key ...

You may USE another User's Query, but you cannot change it. However, you can use COPY to make your own version which you can then change.

Select

Slide notes

The COPY function will always allow us to create a new copy of a Query, which we will then own. This particular Query is owned by the System Manager, and that's not me.

Slide 2 - Slide 2

IES Client v8.29 : My IES

Help Submit Quit Functions Commands

Query Builder

Save

Execute

Select Query Fields

Remove

Copy

Data Selector Wizard

Notes

Owned By: System Manager

Last Updated On: 06/08/2010

Query Fields must be selected with the SELECT QUERY FIELDS button, but unwanted fields can be removed from the grid with the DEL key ...

You may USE another User's Query, but you cannot change it. However, you can use COPY to make your own version which you can then change.

Save

Slide notes

Slide 3 - Slide 3

IES Client v8.29 : My IES

Help Submit Quit Functions Commands

Query Builder

Query Key:

Execute

Save

For a new Query, type NEW ...

To re-use a current Query, please type a search string OR use the lookup ...

Description:

Omit Column

Enable Mul

Target Environment:

Delimiter:

Data Source:

Data Selector:

Owned By:

Last Updated On:

Query Fields

1	RKEY
2	descr
3	act-ptd

Notes

You are not the Owner of the Query and cannot save it!

Hint: You can make a copy that you will own and change and / or save that version.

OK

Query Fields must be selected with the SELECT QUERY FIELDS button, but unwanted fields can be removed from the grid with the DEL key ...

You may USE another User's Query, but you cannot change it. However, you can use COPY to make your own version which you can then change.

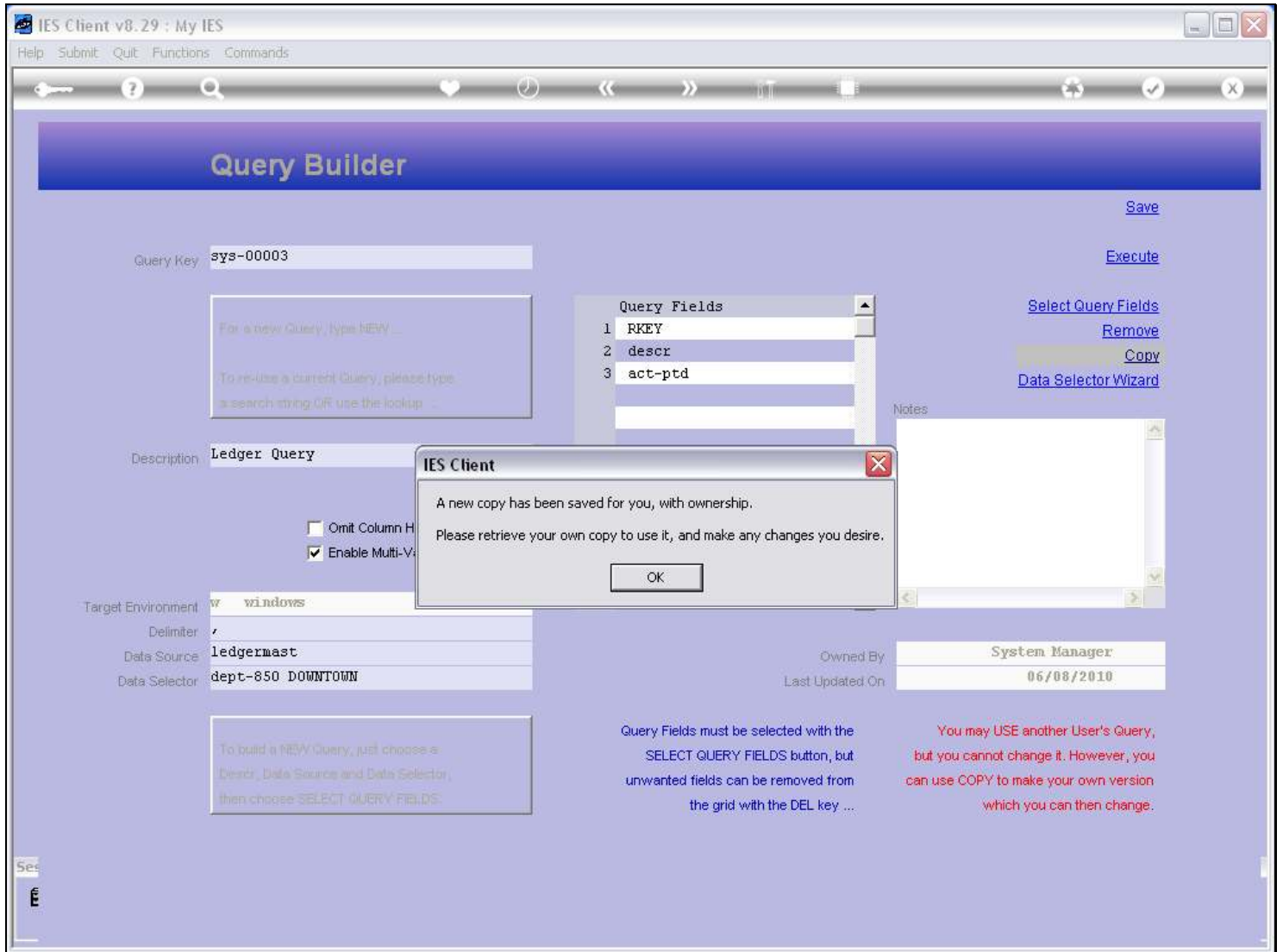
Slide notes

That's why I cannot save it, or change it. So, if I would like a Query just like this one, or almost like it, then I can copy it, own the new copy, and therefore be able to make changes to the new copy, and save it.

Slide 4 - Slide 4

Slide notes

Slide 5 - Slide 5



Slide notes

So now I have my own copy.

Slide 6 - Slide 6

Slide notes

Slide 7 - Slide 7

IES Client v8.29 : My IES

Help Submit Quit Functions Commands

Query Builder

Save

Query Key:

Execute

Select Query Fields

Remove

Copy

Data Selector Wizard

Notes

Owned By: System Manager

Last Updated On: 06/08/2010

For a new Query, type NEW ...
To re-use a current Query, please type a search string OR use the lookup ...

Description:

Omit Column Headers
 Enable Multi-Values

Target Environment:

Delimiter:

Data Source:

Data Selector:

To build a NEW Query, just choose a Descr, Data Source and Data Selector, then choose 'SELECT QUERY FIELDS'

Query Fields must be selected with the SELECT QUERY FIELDS button, but unwanted fields can be removed from the grid with the DEL key ...

You may USE another User's Query, but you cannot change it. However, you can use COPY to make your own version which you can then change.

Select Query Fields

Slide notes

Slide 8 - Slide 8

IES Client v8.29 : My IES

Help Submit Quit Functions Commands

Query Builder

Save

Query Key: ledger

For a new Query, type NEW ...
To re-use a current Query, please type a search string OR use the lookup ...

Description: Ledger Query

Omit Column Headers
 Enable Multi-Values

Target Environment: w windows
Delimiter: /
Data Source: ledgermast
Data Selector: dept-850 DOWNTOWN

Query Fields	
1	RKEY
2	descr
3	act-ptd

Notes

Owned By: System Manager
Last Updated On: 06/08/2010

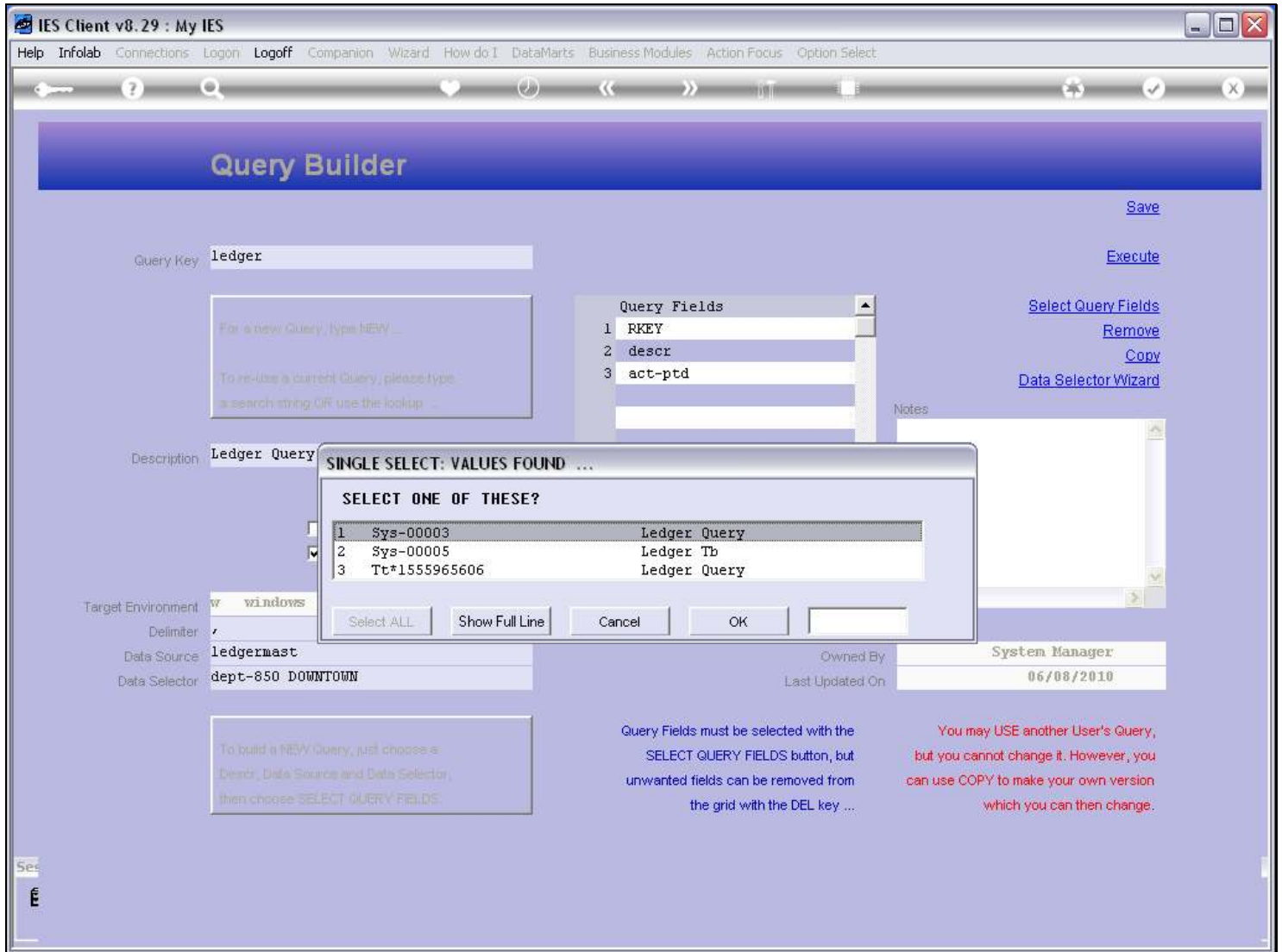
You may USE another User's Query, but you cannot change it. However, you can use COPY to make your own version which you can then change.

Query Fields must be selected with the SELECT QUERY FIELDS button, but unwanted fields can be removed from the grid with the DEL key ...

Select Query Fields

Slide notes

Slide 9 - Slide 9



Slide notes

This is my new Copy. The Key starts with my User Code.

Slide 10 - Slide 10

IES Client v8.29 : My IES

Help Submit Quit Functions Commands

Query Builder

Query Key:

For a new Query, type NEW ...

To re-use a current Query, please type a search string OR use the lookup ...

Description:

Omit Column Headers
 Enable Multi-Values

Target Environment:

Delimiter:

Data Source:

Data Selector:

To build a NEW Query, just choose a Descr, Data Source and Data Selector, then choose 'SELECT QUERY FIELDS'.

Query Fields

1	RKEY
2	descr
3	act-ptd

Notes

Owned By:

Last Updated On:

Save

Execute

Select Query Fields

Remove

Copy

Data Selector Wizard

Query Fields must be selected with the SELECT QUERY FIELDS button, but unwanted fields can be removed from the grid with the DEL key ...

You may USE another User's Query, but you cannot change it. However, you can use COPY to make your own version which you can then change.

Slide notes

Now I can rename the Query, select different fields, etc., and of course I can save it as my own, since I now own it. That does not mean I can execute it if I do not have access to the Data Source or Fields though. Even though I can copy and make my own version, whenever I execute the Query, the system will check whether I may query this Data Source and Fields.

Slide 11 - Slide 11



Slide notes

Slide 12 - Slide 12

IES Client v8.29 : My IES

Help Submit Quit Functions Commands

Query Builder

Query Key:

[Save](#)

[Execute](#)

[Select Query Fields](#)

[Remove](#)

[Copy](#)

[Data Selector Wizard](#)

Description:

Omit Column Headers

Enable Multi-Values

Target Environment:

Delimiter:

Data Source:

Data Selector:

Owned By:

Last Updated On:

Query Fields must be selected with the SELECT QUERY FIELDS button, but unwanted fields can be removed from the grid with the DEL key ...

You may USE another User's Query, but you cannot change it. However, you can use COPY to make your own version which you can then change.

Slide notes

Slide 13 - Slide 13



Slide notes