

Slide 1 - Slide 1

IES Client v8.29 : My IES

Help Submit Quit Functions Commands

Query Builder

Query Key:

For a new Query, type NEW ...

To re-use a current Query, please type a search string OR use the lookup ...

Description:

Omit Column Headers
 Enable Multi-Values

Target Environment:

Delimiter:

Data Source:

Data Selector:

To build a NEW Query, just choose a Descr, Data Source and Data Selector, then choose SELECT QUERY FIELDS.

Query Fields

1	RKEY
2	descr
3	act-ptd

Notes

Owned By:

Last Updated On:

Query Fields must be selected with the SELECT QUERY FIELDS button, but unwanted fields can be removed from the grid with the DEL key ...

You may USE another User's Query, but you cannot change it. However, you can use COPY to make your own version which you can then change.

Save

Execute

Select Query Fields

Remove

Copy

Data Selector Wizard

Slide notes

If we own a Query, then we also have the right to remove it from the system, i.e. to delete it if we no longer wish to use it. In this example, the System Manager owns the Query, and that's not me.

Slide 2 - Slide 2

IES Client v8.29 : My IES

Help Submit Quit Functions Commands

Query Builder

Save

Query Key:

Execute

Select Query Fields

Remove

Copy

Data Selector Wizard

Notes

For a new Query, type NEW ...

To re-use a current Query, please type a search string OR use the lookup ...

Description:

Omit Column Headers

Enable Multi-Values

Target Environment:

Delimiter:

Data Source:

Data Selector:

Owned By:

Last Updated On:

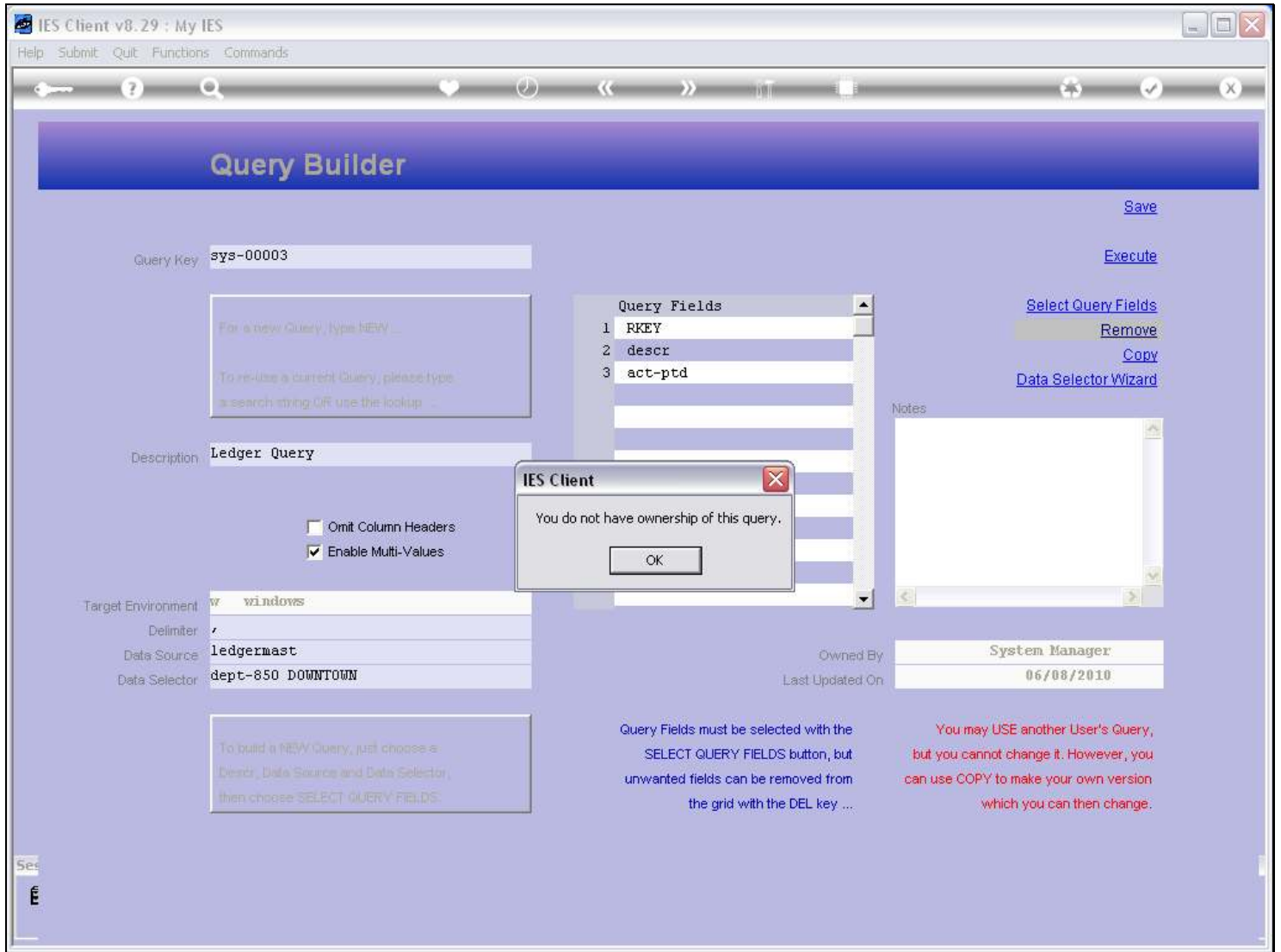
Query Fields must be selected with the SELECT QUERY FIELDS button, but unwanted fields can be removed from the grid with the DEL key ...

You may USE another User's Query, but you cannot change it. However, you can use COPY to make your own version which you can then change.

To build a NEW Query, just choose a Descr, Data Source and Data Selector, then choose 'SELECT QUERY FIELDS'

Slide notes

Slide 3 - Slide 3



Slide notes

When I try to remove it, I cannot.

Slide 4 - Slide 4

IES Client v8.29 : My IES

Help Submit Quit Functions Commands

Query Builder

Save

Query Key:

Execute

For a new Query, type NEW ...

To re-use a current Query, please type a search string OR use the lookup ...

Description:

Omit Column Headers

Enable Multi-Values

Target Environment:

Delimiter:

Data Source:

Data Selector:

Owned By:

Last Updated On:

Query Fields

1	RKEY
2	descr
3	act-ptd

Notes

To build a NEW Query, just choose a Descr, Data Source and Data Selector, then choose 'SELECT QUERY FIELDS'.

Query Fields must be selected with the SELECT QUERY FIELDS button, but unwanted fields can be removed from the grid with the DEL key ...

You may USE another User's Query, but you cannot change it. However, you can use COPY to make your own version which you can then change.

Slide notes

Slide 5 - Slide 5



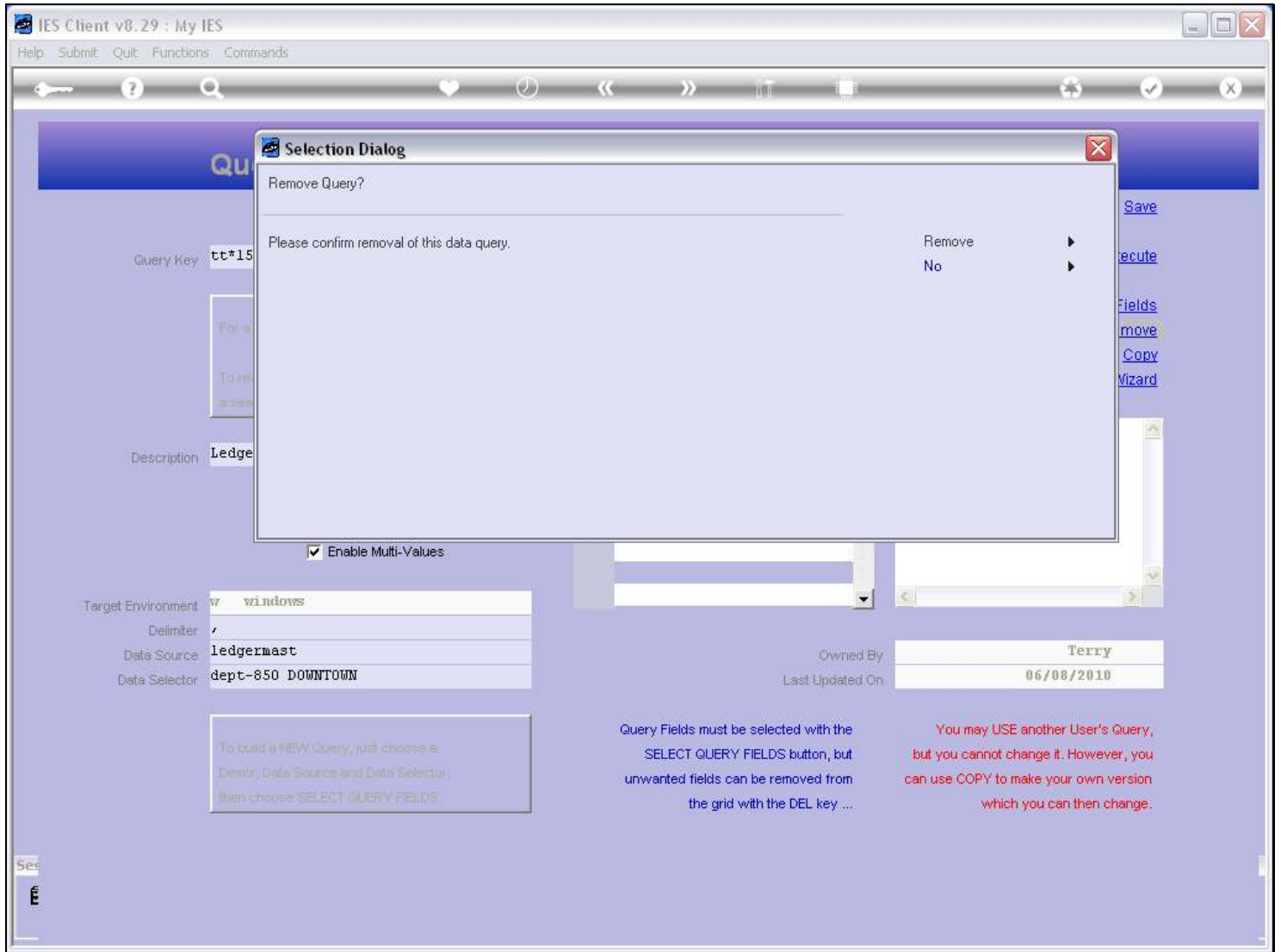
Slide notes

But in this example, the Query belongs to me.

Slide 6 - Slide 6

Slide notes

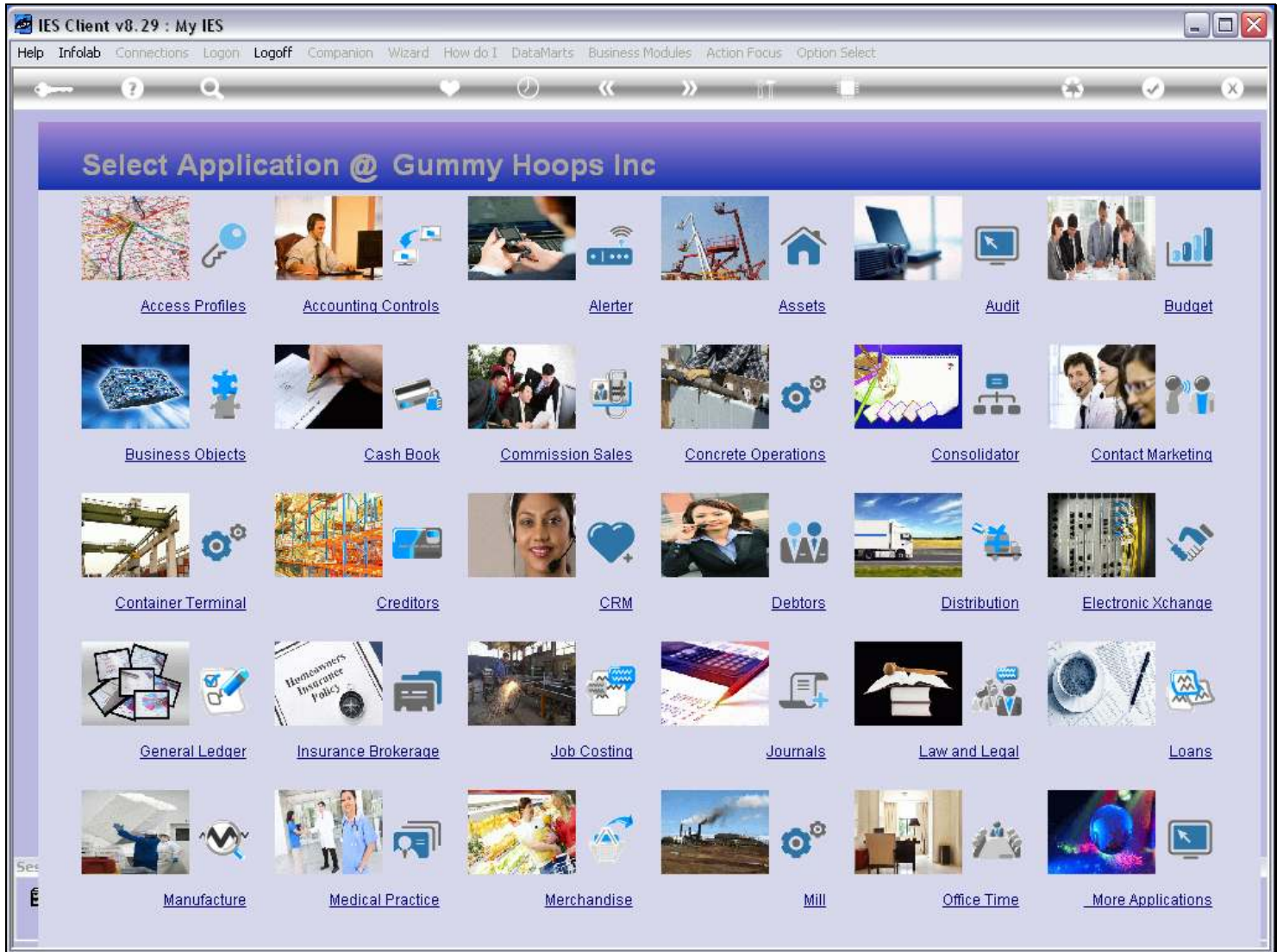
Slide 7 - Slide 7



Slide notes

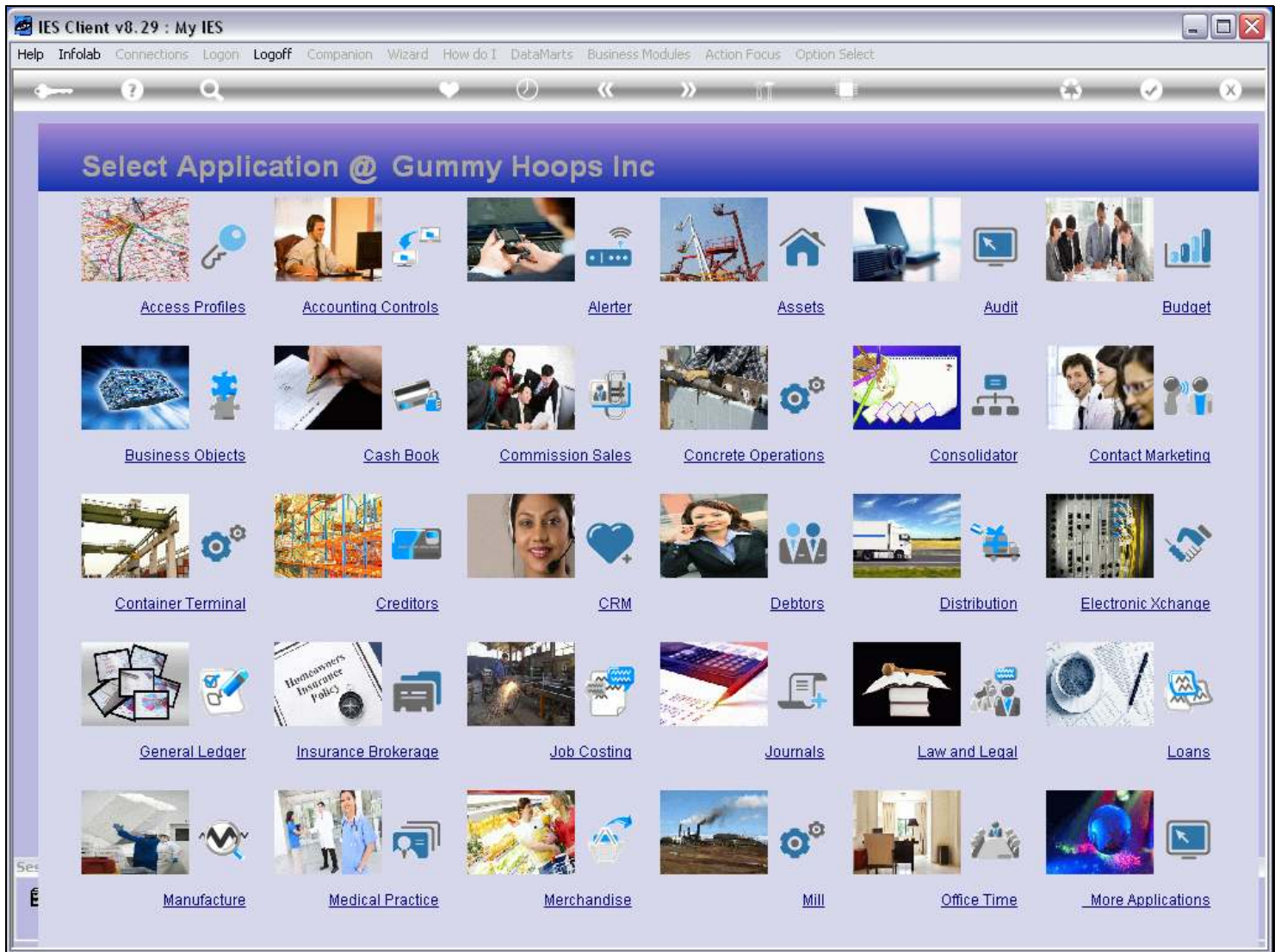
And therefore I am allowed to delete it.

Slide 8 - Slide 8



Slide notes

Slide 9 - Slide 9



Slide notes