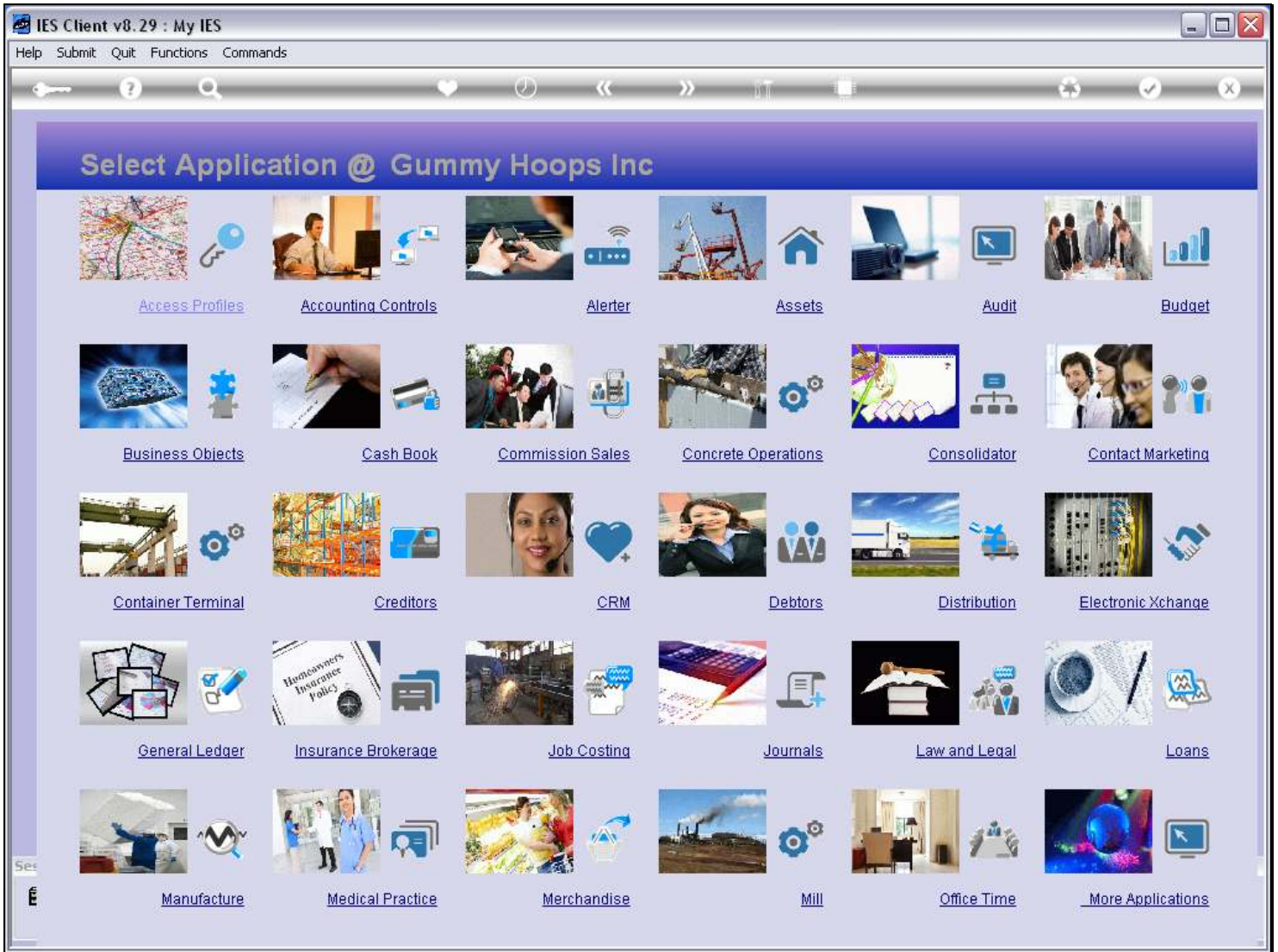


Slide 1 - Slide 1



Slide notes

Quick Writer is entered at the System Business Objects application.

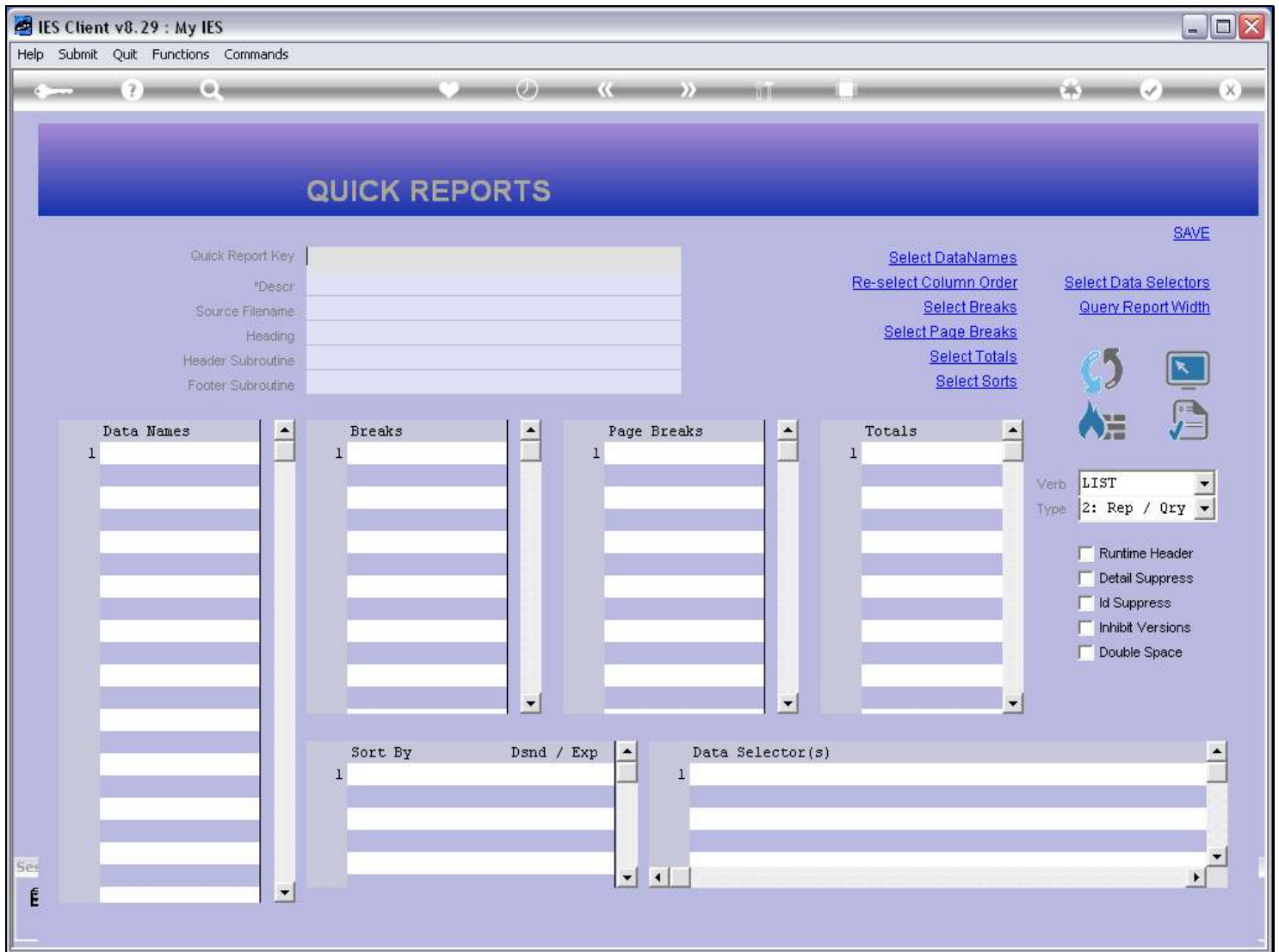
Slide 2 - Slide 2



Slide notes

And it is of course found at the Report Writing menu.

Slide 3 - Slide 3



Slide notes

While this is the standard entry point for QuickWriter and the access point that we need on our Profiles, we can also have it on our Companion Favorites, and in that case we can reach it from anywhere in the system by choosing Companion.

Slide 4 - Slide 4

The screenshot shows the IES Client v8.29: My IES interface. At the top, there is a menu bar with 'Help', 'Submit', 'Quit', 'Functions', and 'Commands'. Below the menu is a toolbar with various icons. The main area is titled 'QUICK REPORTS' in a blue header. On the left, there is a 'Quick Report Key' section with a table for defining report keys. On the right, there are several blue links for configuration: 'Select DataNames', 'Re-select Column Order', 'Select Breaks', 'Select Page Breaks', 'Select Totals', and 'Select Sorts'. There are also icons for 'SAVE', 'Refresh', 'Print', and 'Help'. Below these links are four vertical list boxes: 'Data Names', 'Breaks', 'Page Breaks', and 'Totals', each with a scroll bar and a '1' in the first row. At the bottom, there are two more list boxes: 'Sort By' (with 'Dsnd / Exp' in the first row) and 'Data Selector(s)'. On the far right, there are dropdown menus for 'Verb' (set to 'LIST') and 'Type' (set to '2: Rep / Qty'), and a group of checkboxes for 'Runtime Header', 'Detail Suppress', 'Id Suppress', 'Inhibit Versions', and 'Double Space'.

Slide notes