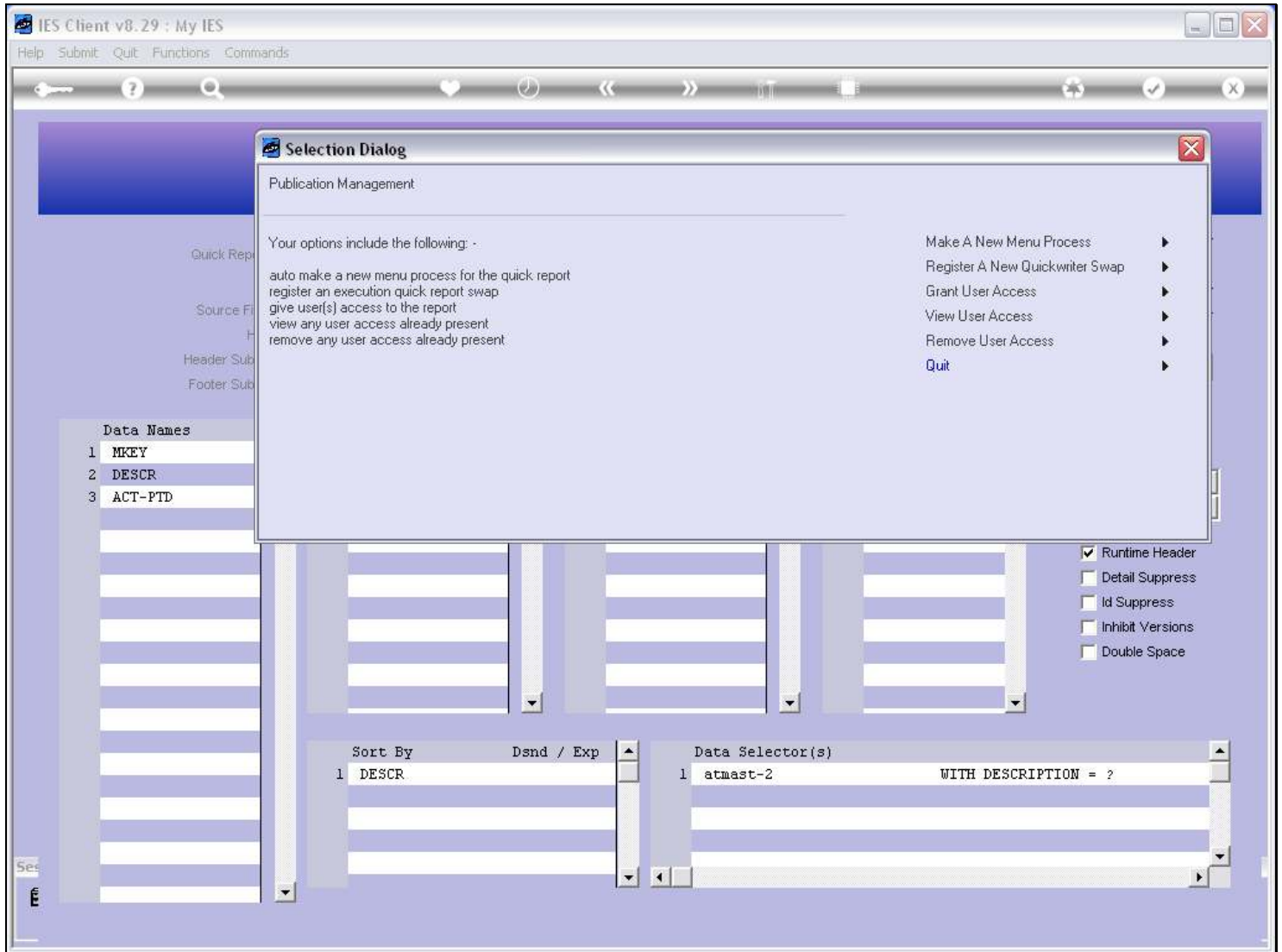


Slide 1 - Slide 1

Slide notes

For a new Report, we can use the Publication option to automatically create a Process in the Menu Library.

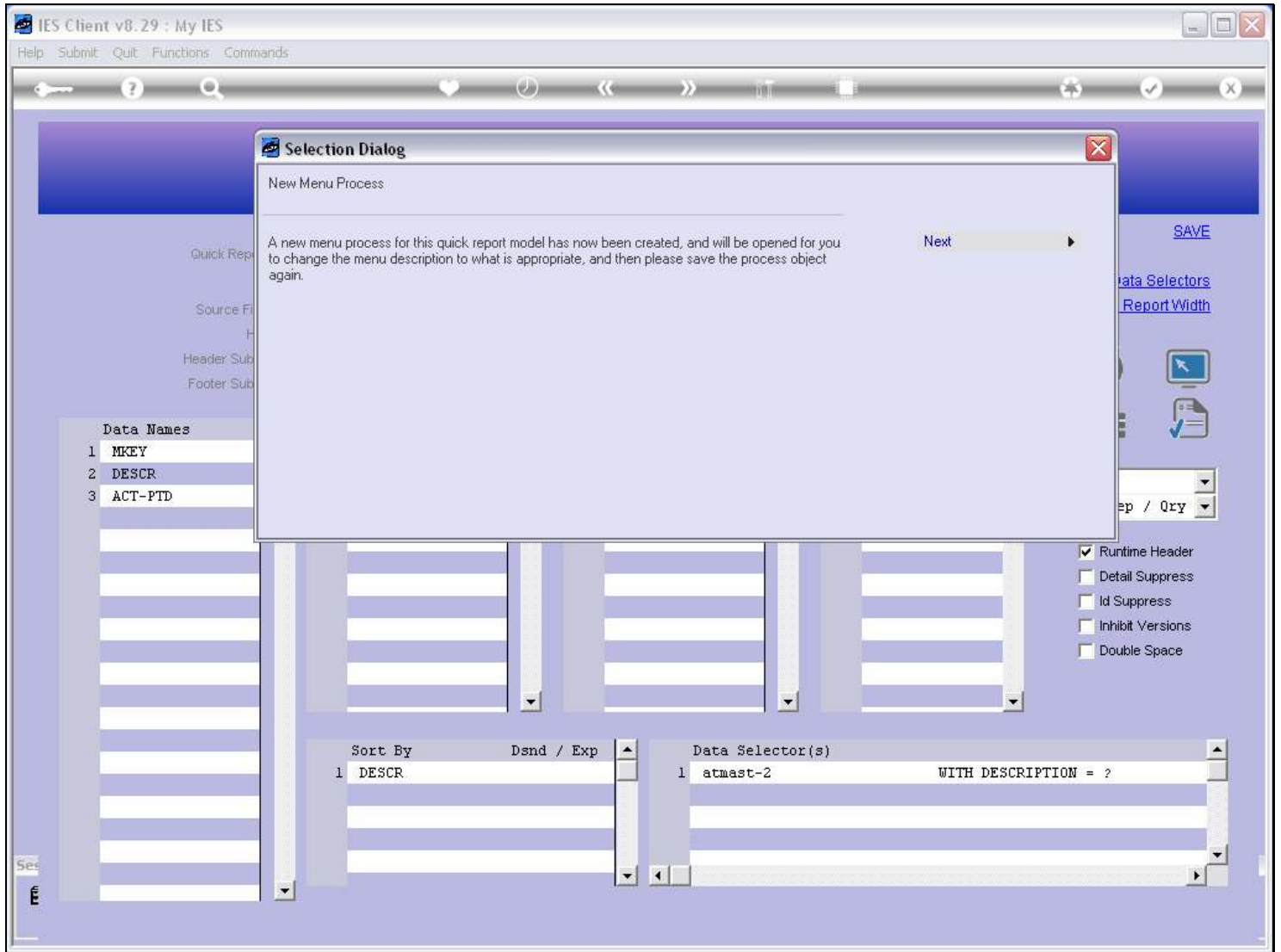
Slide 2 - Slide 2



Slide notes

Why would we want a Menu process for the Report? Well, we do not need that if the Report will be used as a Swap, but if we want to put the Report on a Menu for other Users to use, then we have to register it in the Menu Library first.

Slide 3 - Slide 3



Slide notes

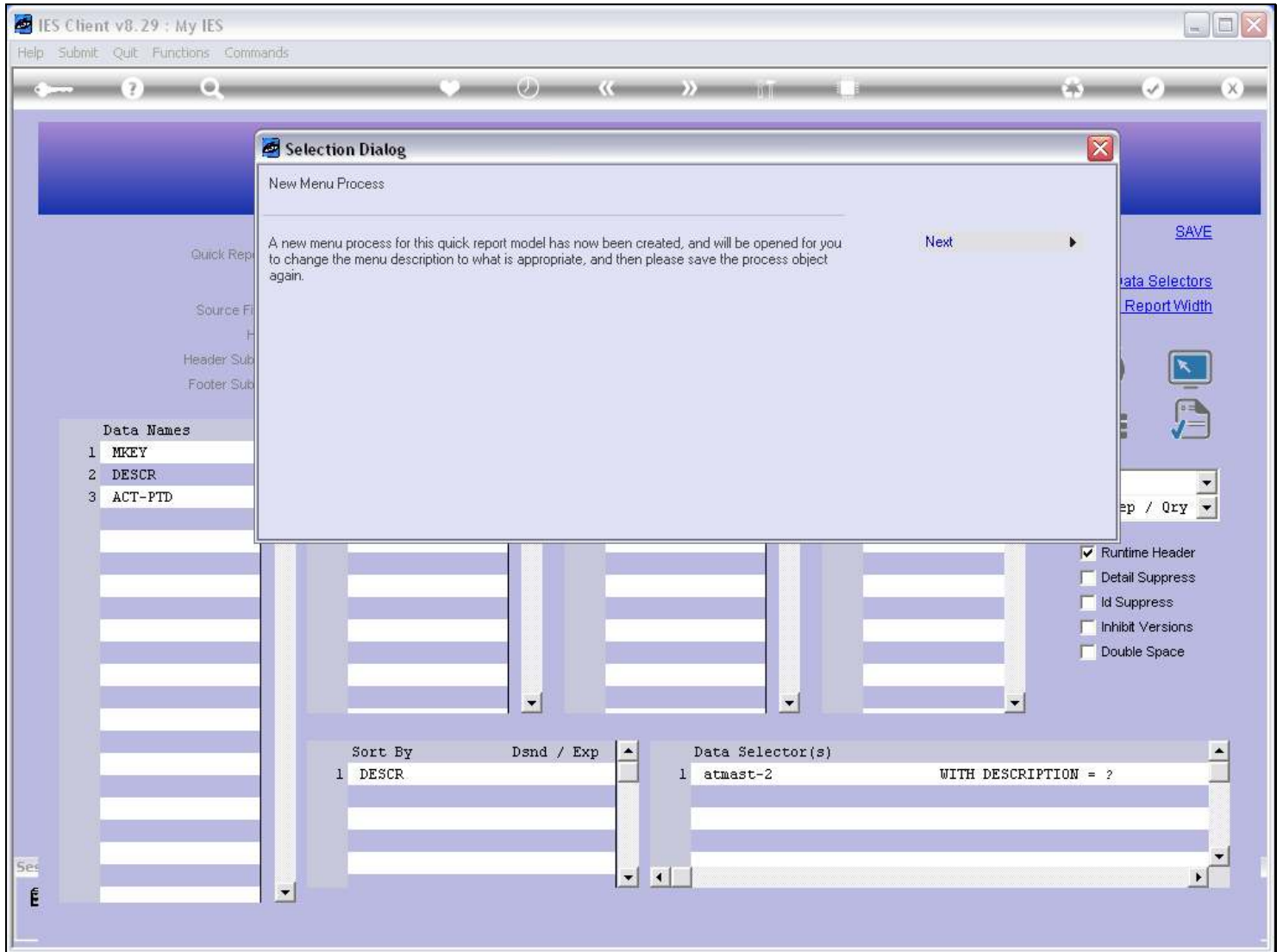
The system automatically creates a Menu Process on request.

Slide 4 - Slide 4



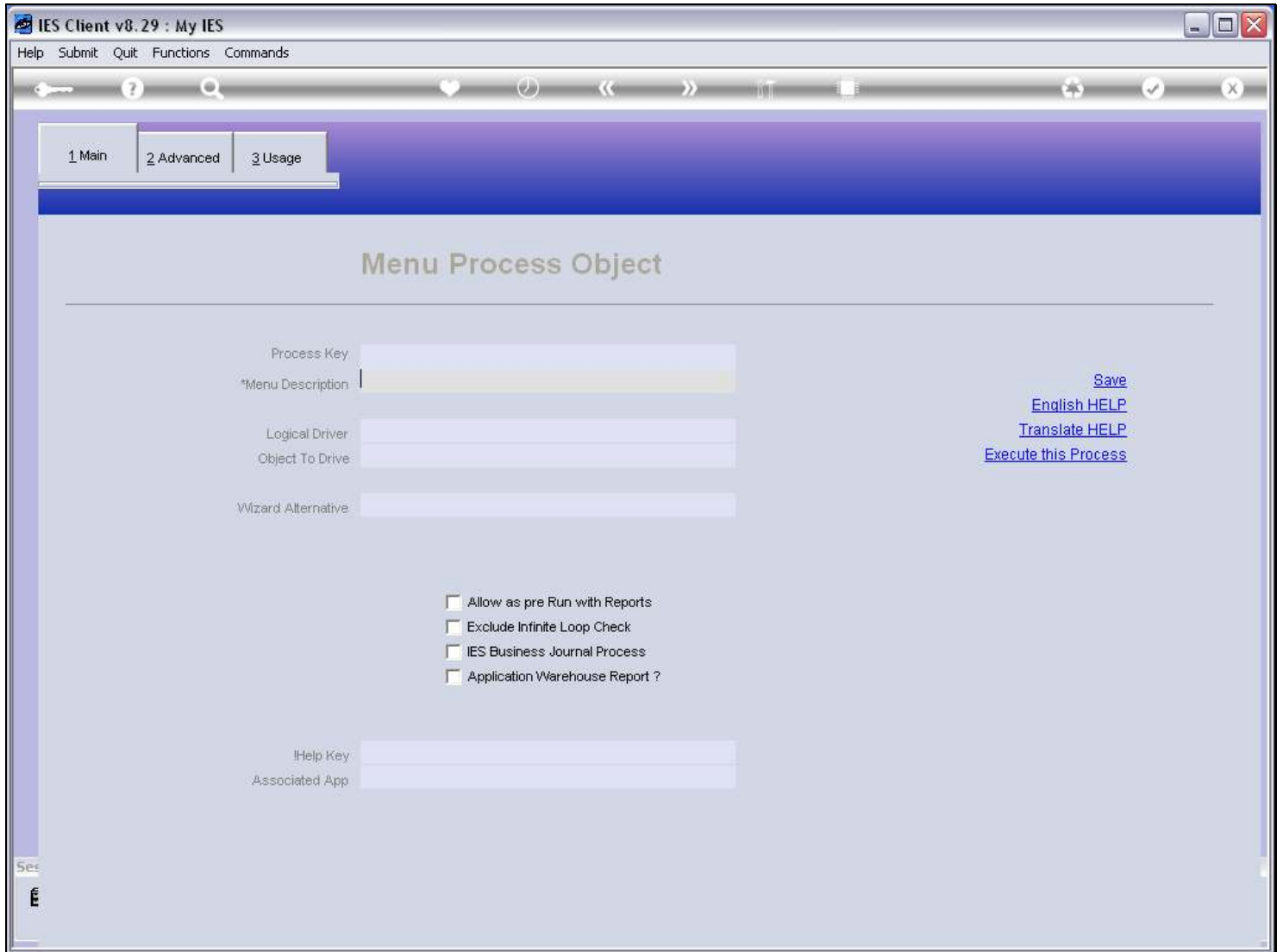
Slide notes

Slide 5 - Slide 5



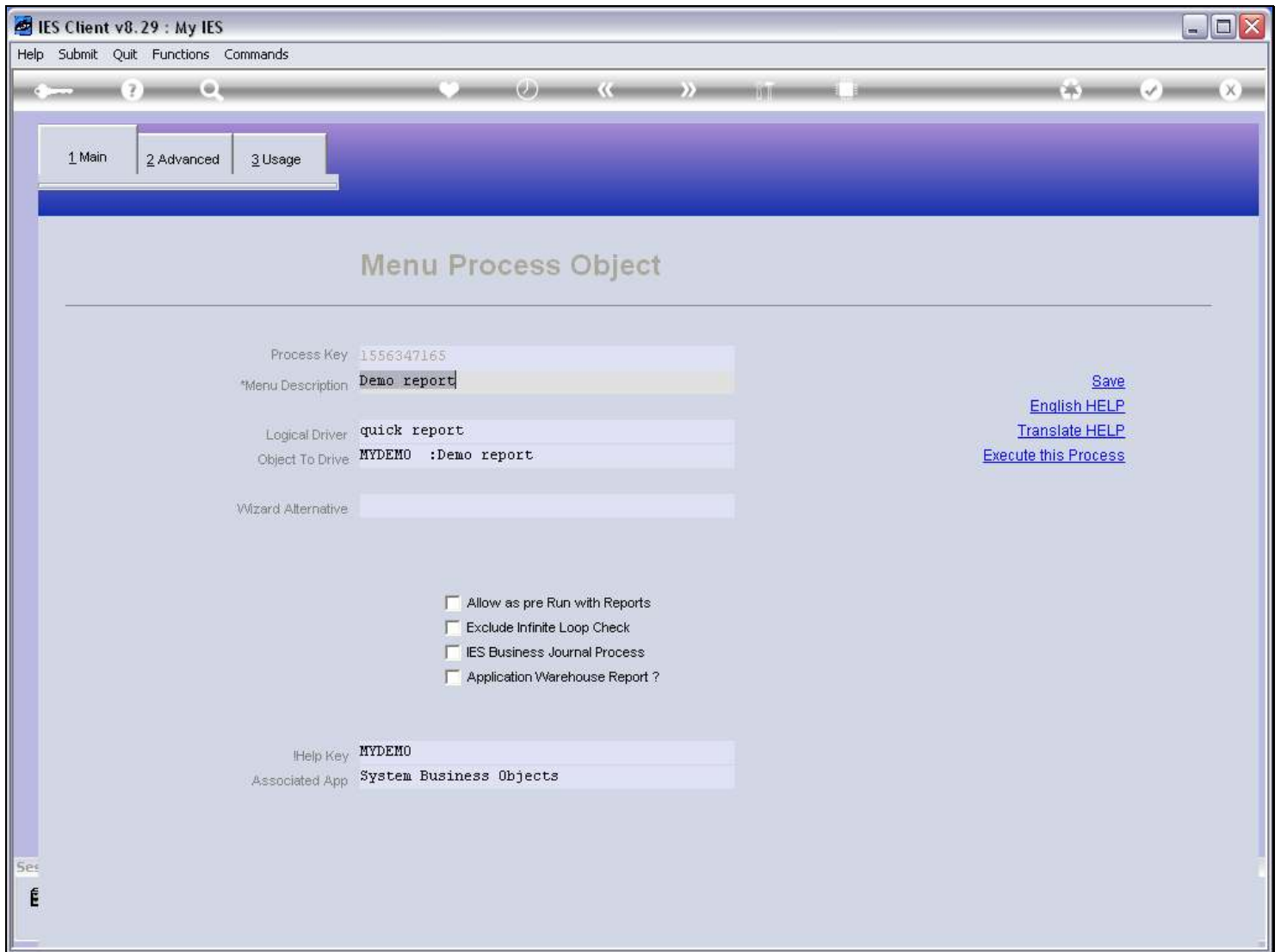
Slide notes

Slide 6 - Slide 6



Slide notes

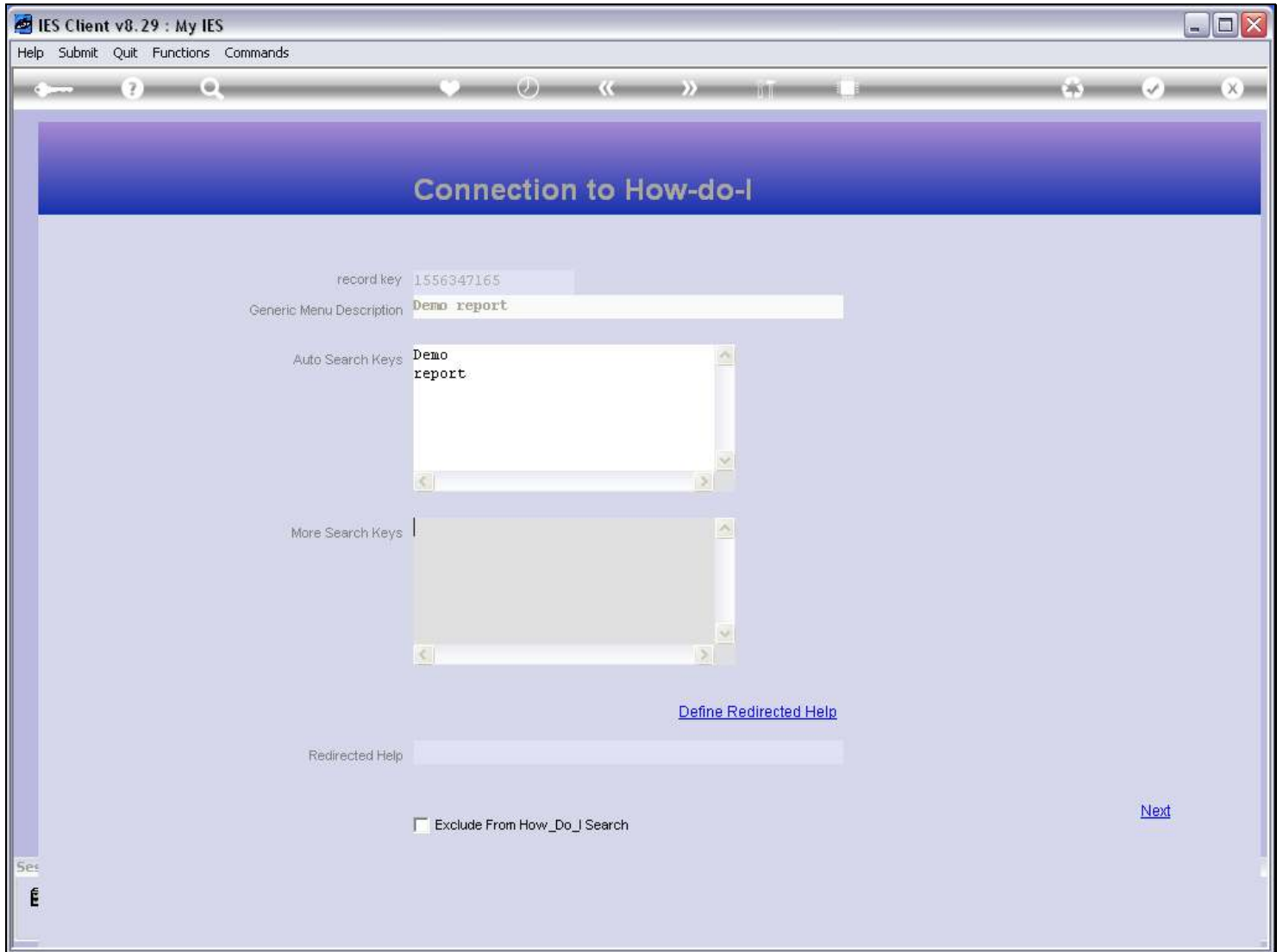
Slide 7 - Slide 7



Slide notes

If we do not like the default Menu Description, then we change it, before choosing SAVE.

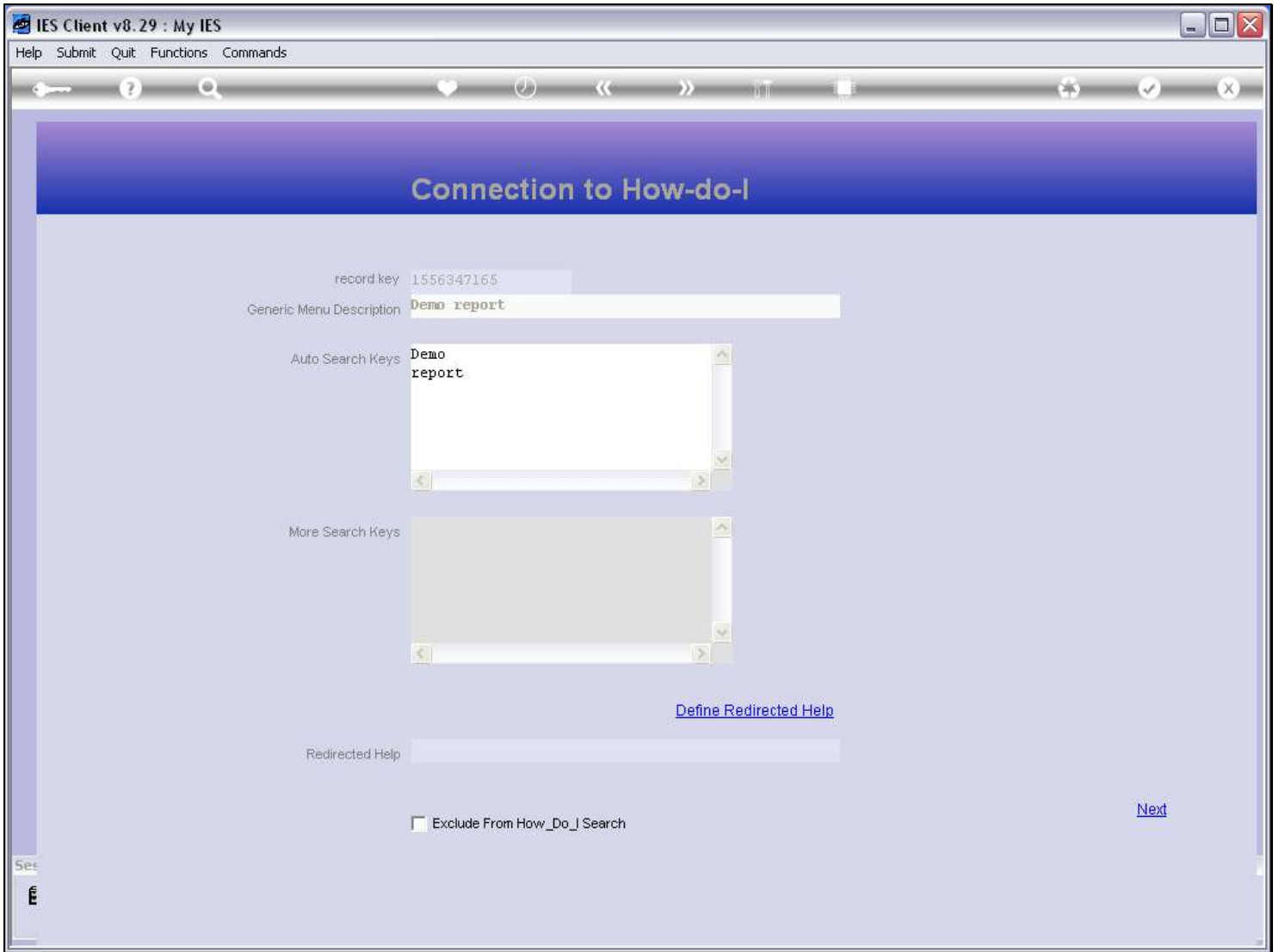
Slide 8 - Slide 8



Slide notes

The 'How do I' system will automatically record the words in our Menu Description, and this new Menu Process will automatically become part of the 'How do I' search.

Slide 9 - Slide 9



Slide notes

Slide 10 - Slide 10

IES Client v8.29 : My IES

Help Infolab Connections Logon Logoff Companion Wizard How do I DataMarts Business Modules Action Focus Option Select

QUICK REPORTS

Quick Report Key: MYDEMO
*Descr: Demo report
Source Filename: atmast
Heading: Demo report
Header Subroutine:
Footer Subroutine:

[Select DataNames](#)
[Re-select Column Order](#)
[Select Breaks](#)
[Select Page Breaks](#)
[Select Totals](#)
[Select Sorts](#)

[Select Data Selectors](#)
[Query Report Width](#)

SAVE

Verb: list
Type: 2: Rep / Qty

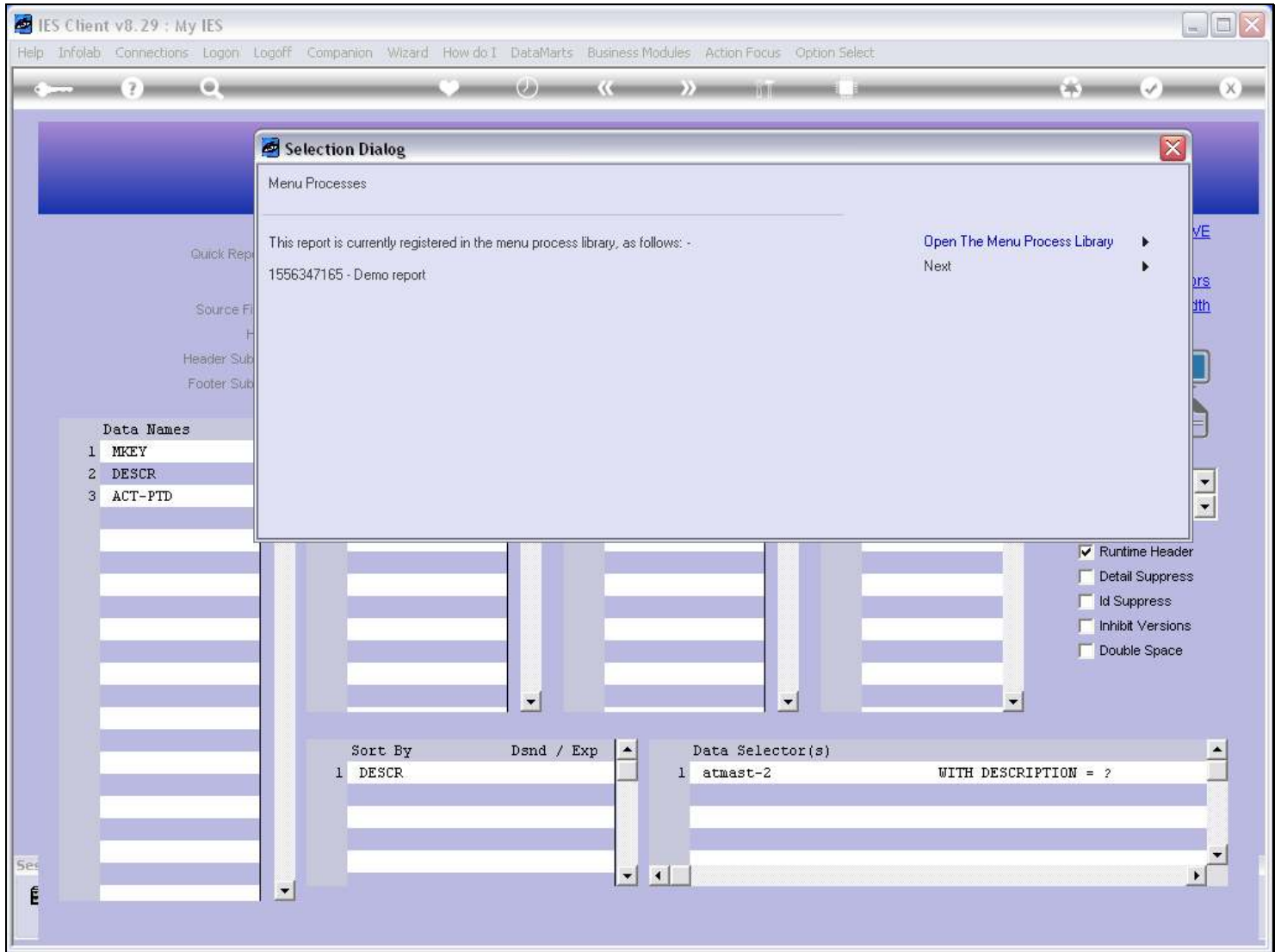
- Runtime Header
- Detail Suppress
- Id Suppress
- Inhibit Versions
- Double Space

Data Names	Breaks	Page Breaks	Totals
1 MKEY	1	1	1
2 DESCR			
3 ACT-PTD			

Sort By	Dsmd / Exp	Data Selector(s)
1 DESCR		1 atmast-2 WITH DESCRIPTION = ?

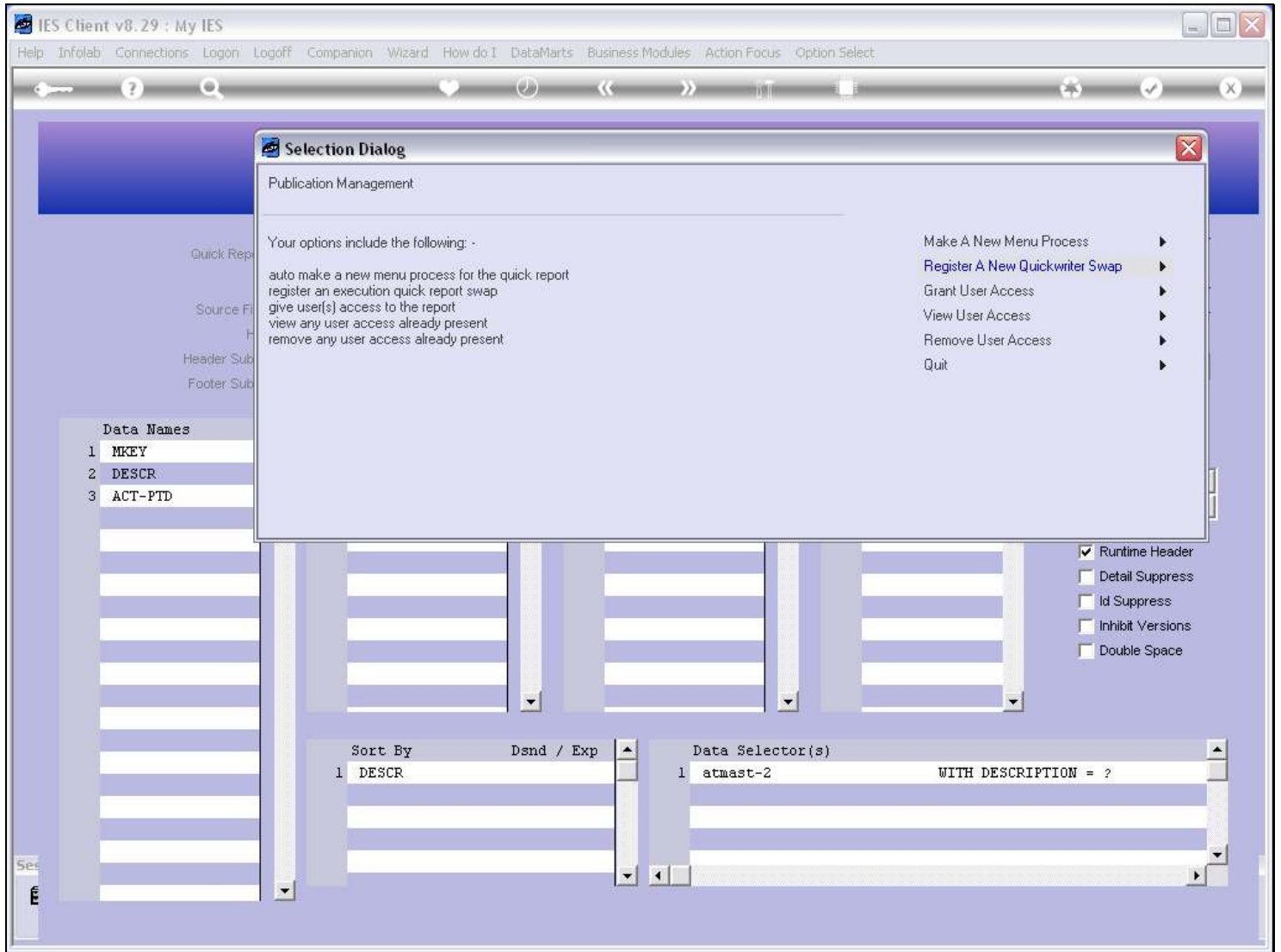
Slide notes

Slide 11 - Slide 11



Slide notes

Slide 12 - Slide 12



Slide notes

