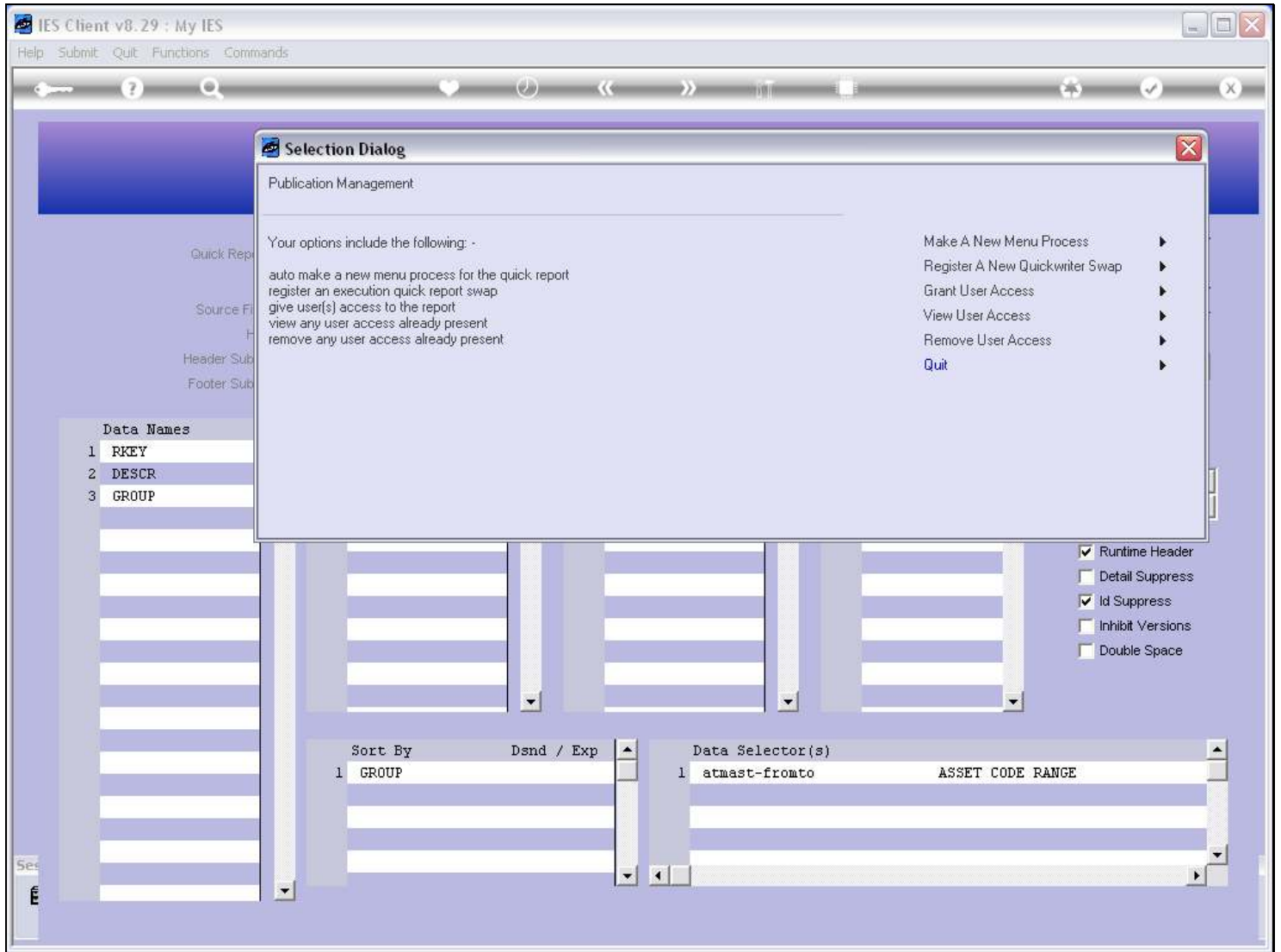


Slide 1 - Slide 1

Slide notes

This is a Report that was copied from a another Report, and we want the system to perform this Version whenever it is asked by a User to perform the original Report. For that purpose, we can register a SWAP. A Swap is an instruction to the system that whenever it is supposed to perform Report 1, then it will quietly swap it out and perform Report 2.

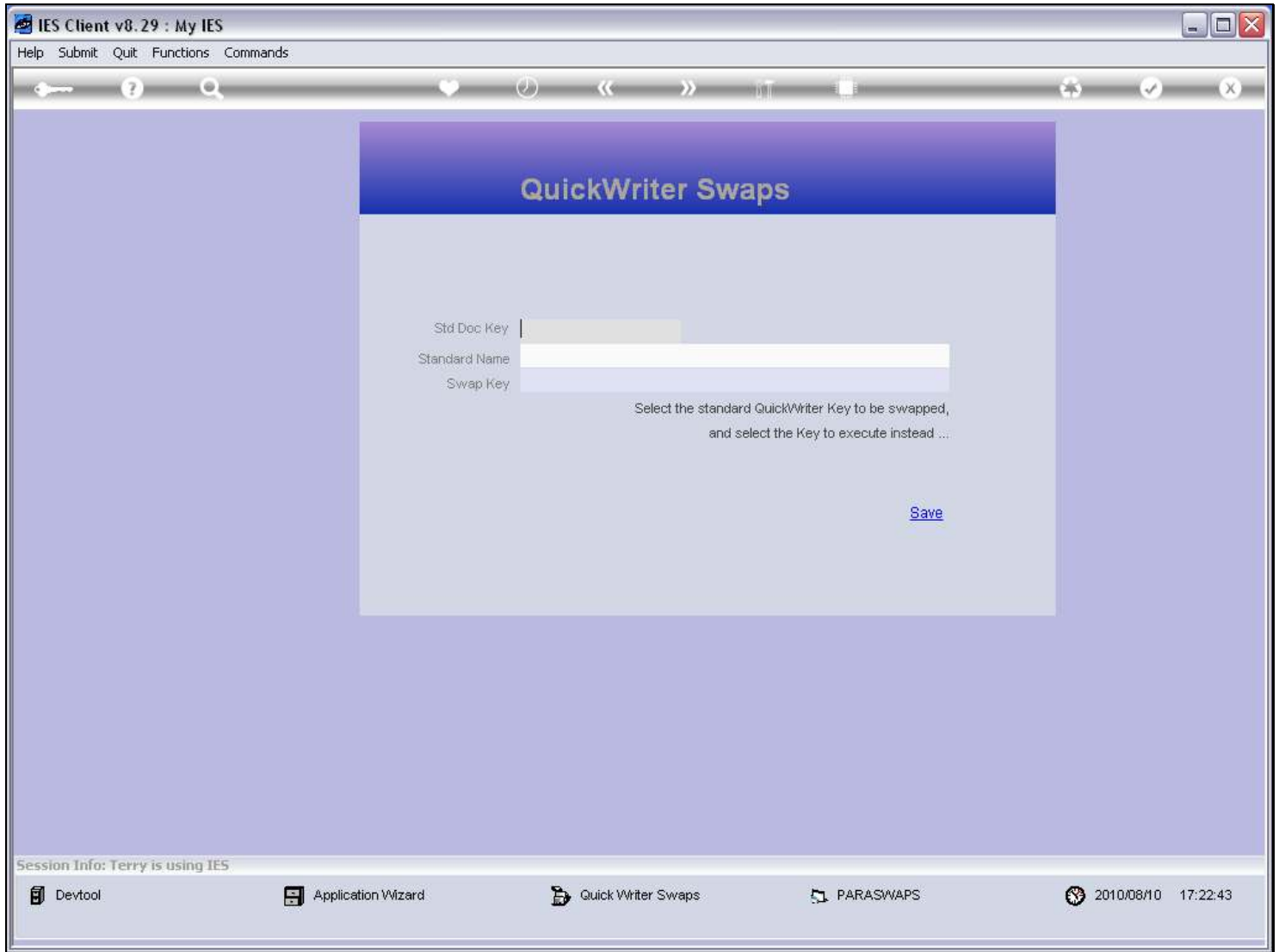
Slide 3 - Slide 3



Slide notes

To use a Report as a Swap, it does not need a Menu Process entry at all.

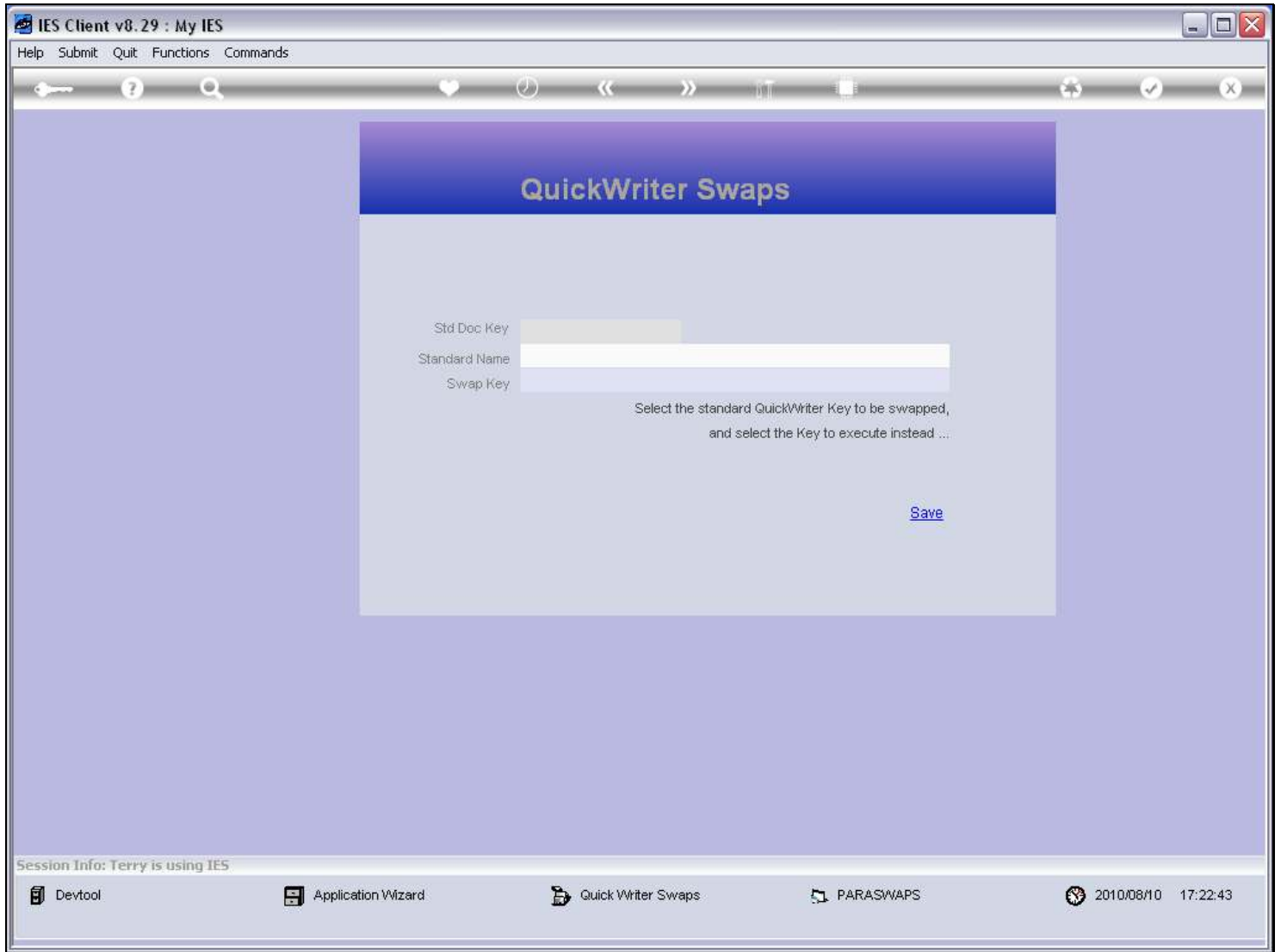
Slide 4 - Slide 4



Slide notes

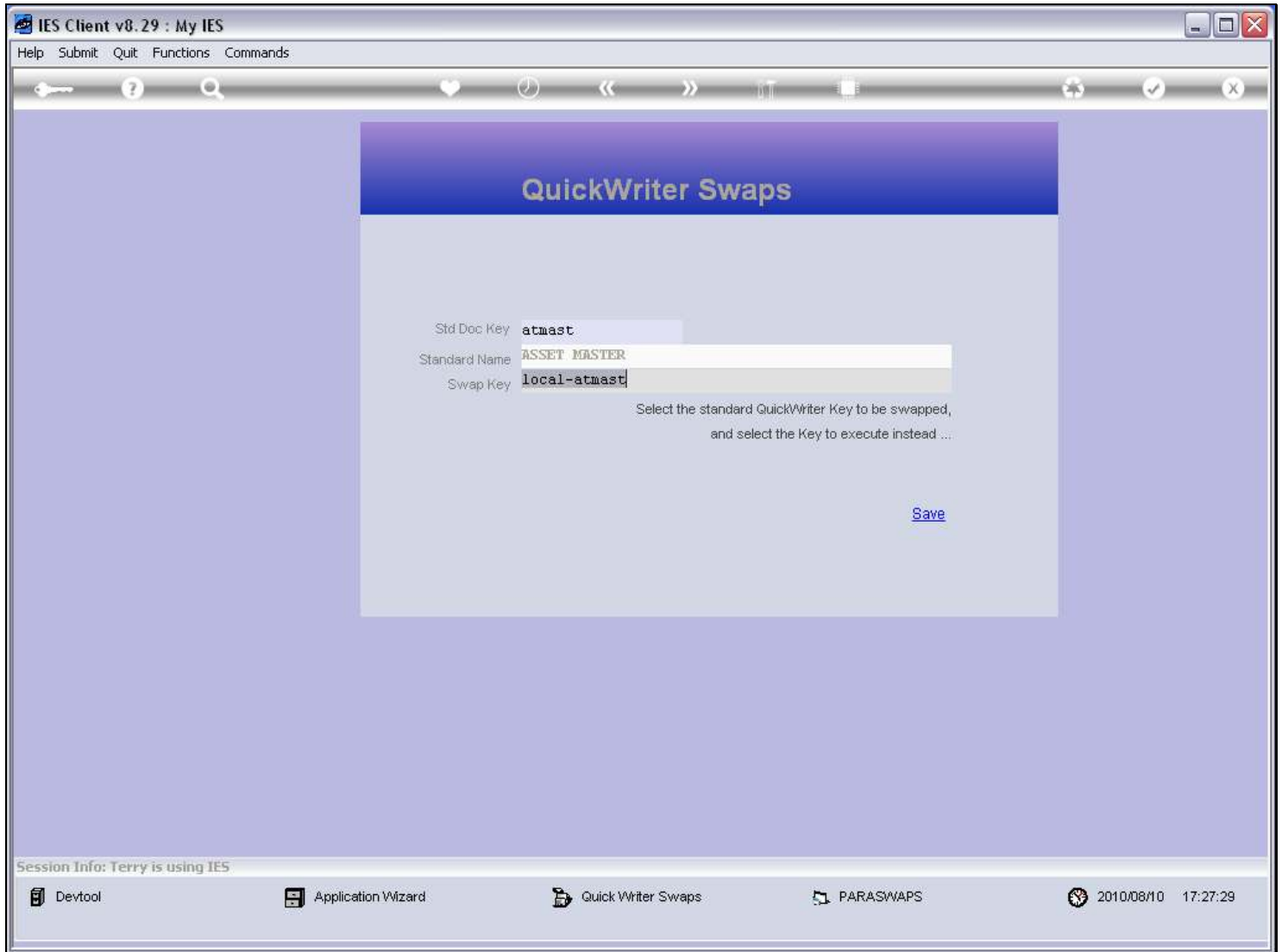
Here, we just indicate the original Report Key.

Slide 5 - Slide 5



Slide notes

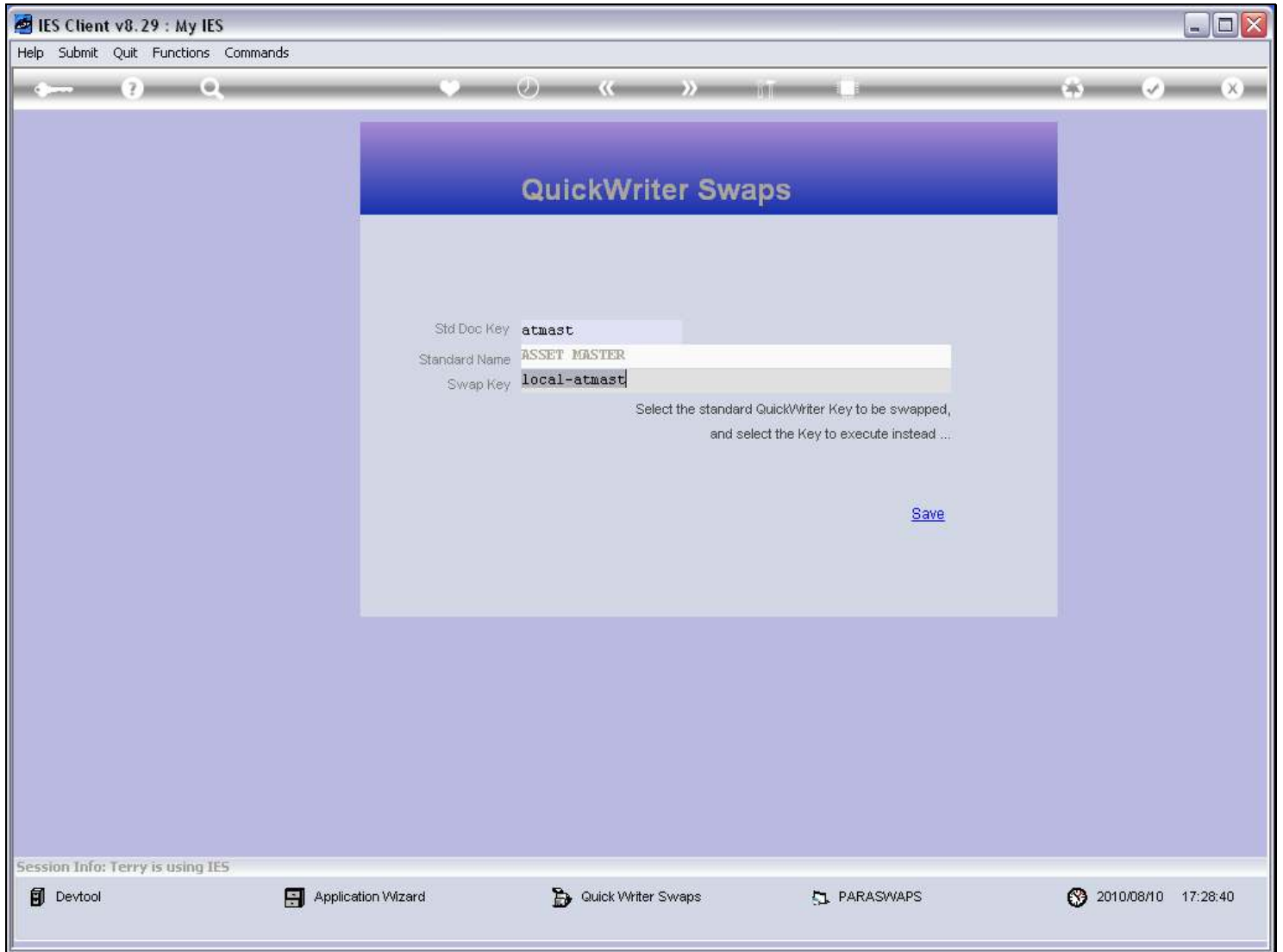
Slide 6 - Slide 6



Slide notes

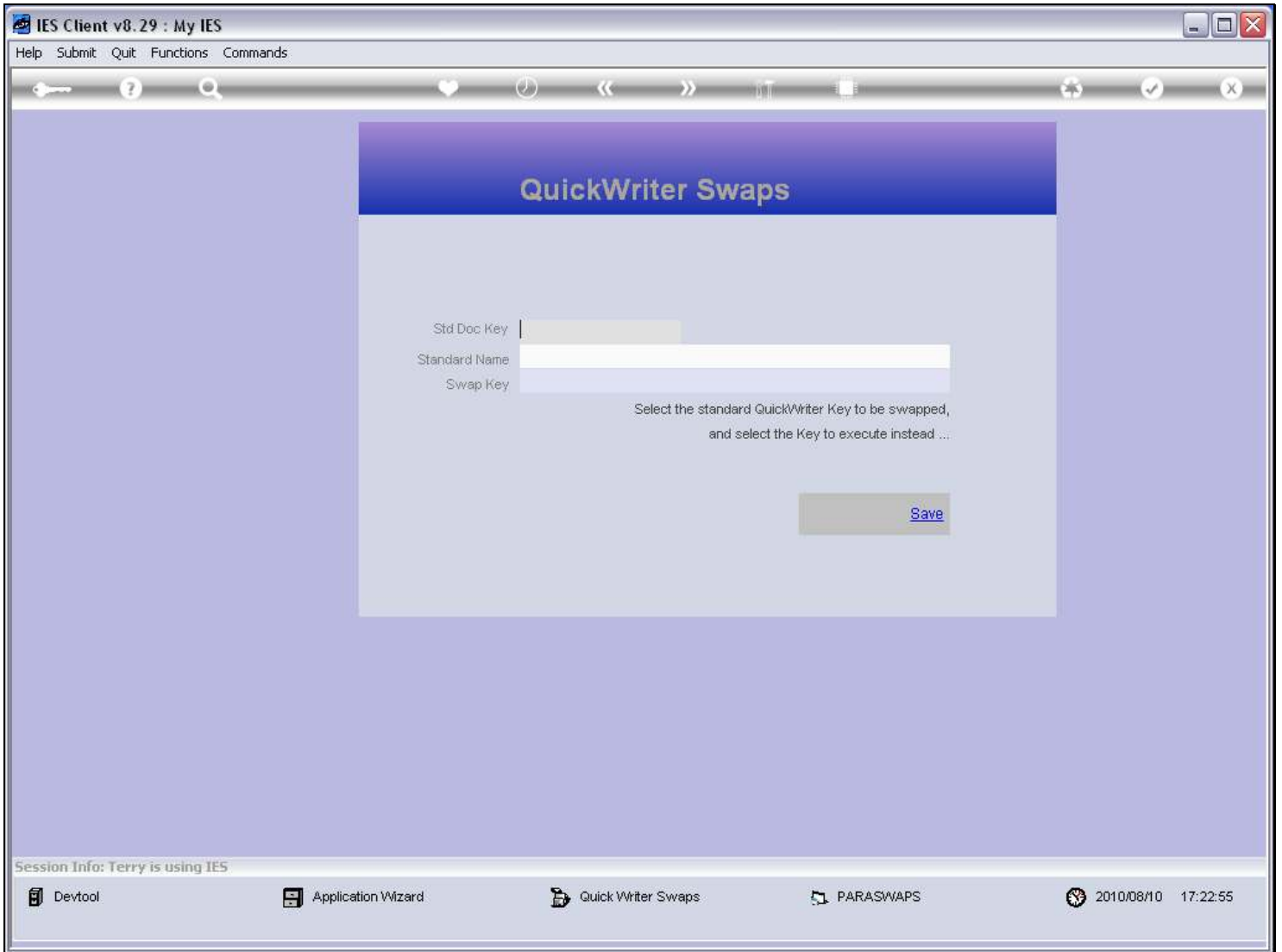
And then the system will insert our current Report as the one to perform instead.

Slide 7 - Slide 7



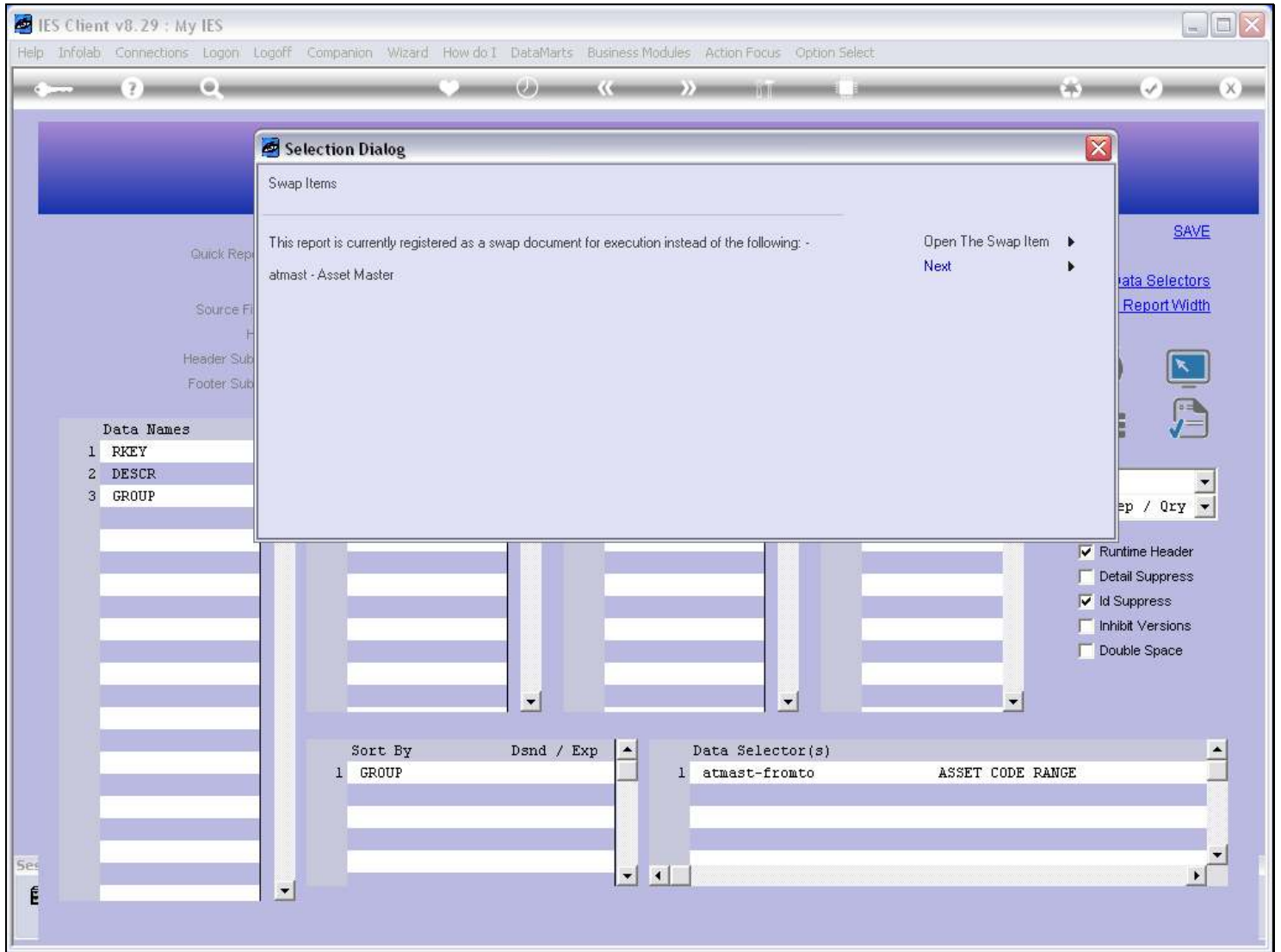
Slide notes

Slide 8 - Slide 8



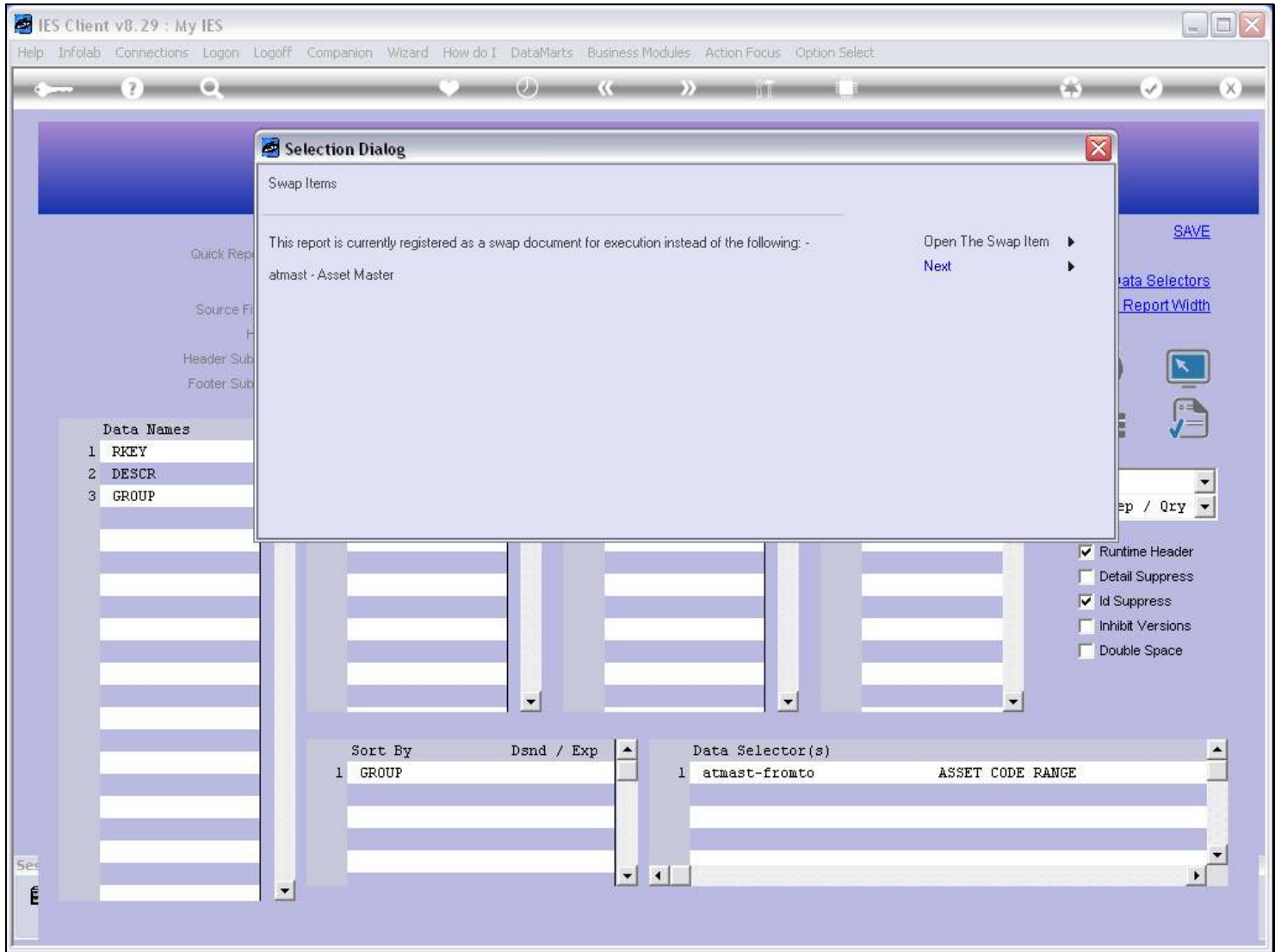
Slide notes

Slide 9 - Slide 9



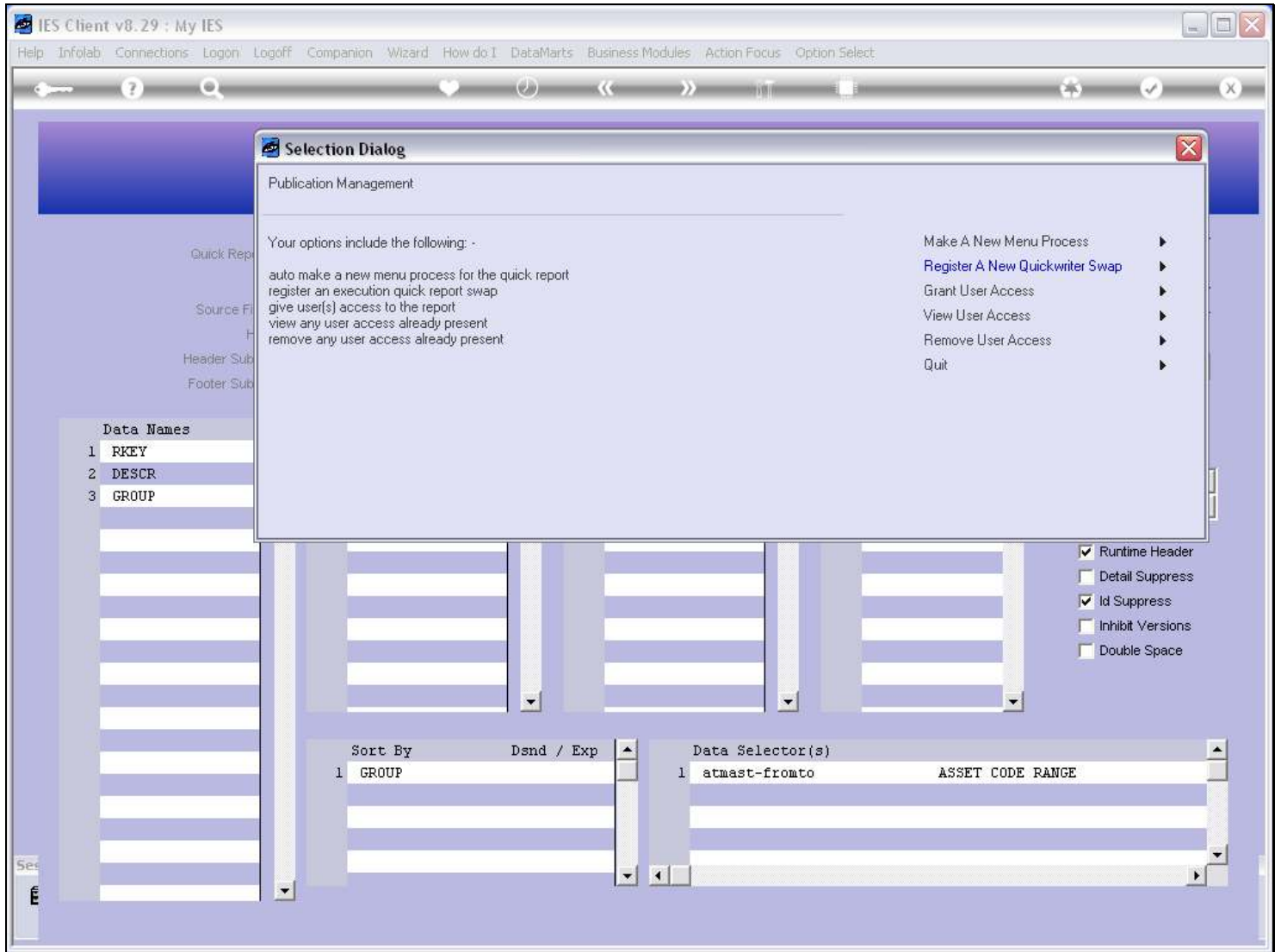
Slide notes

Slide 10 - Slide 10



Slide notes

Slide 11 - Slide 11



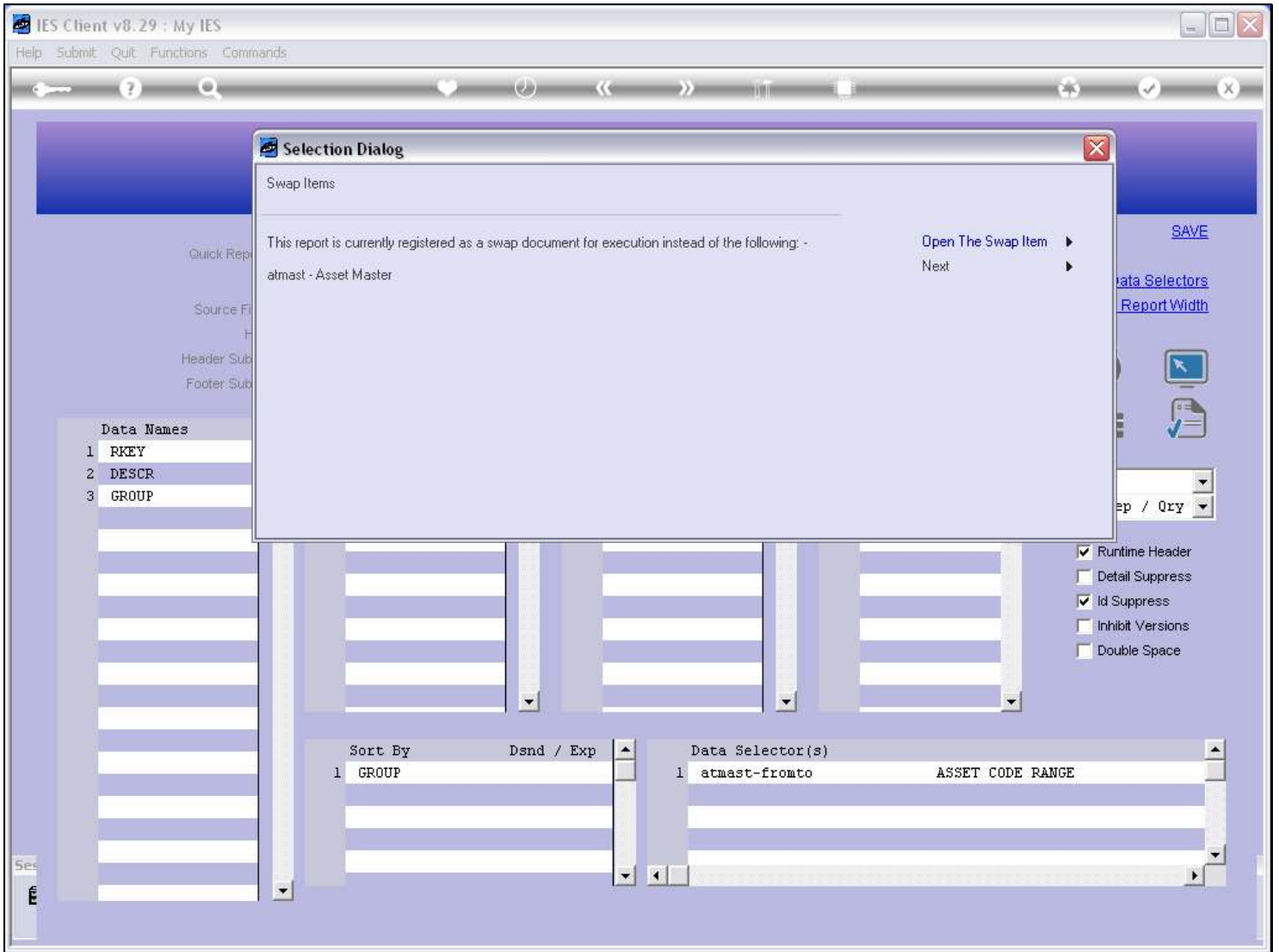
Slide notes

Slide 12 - Slide 12

Slide notes

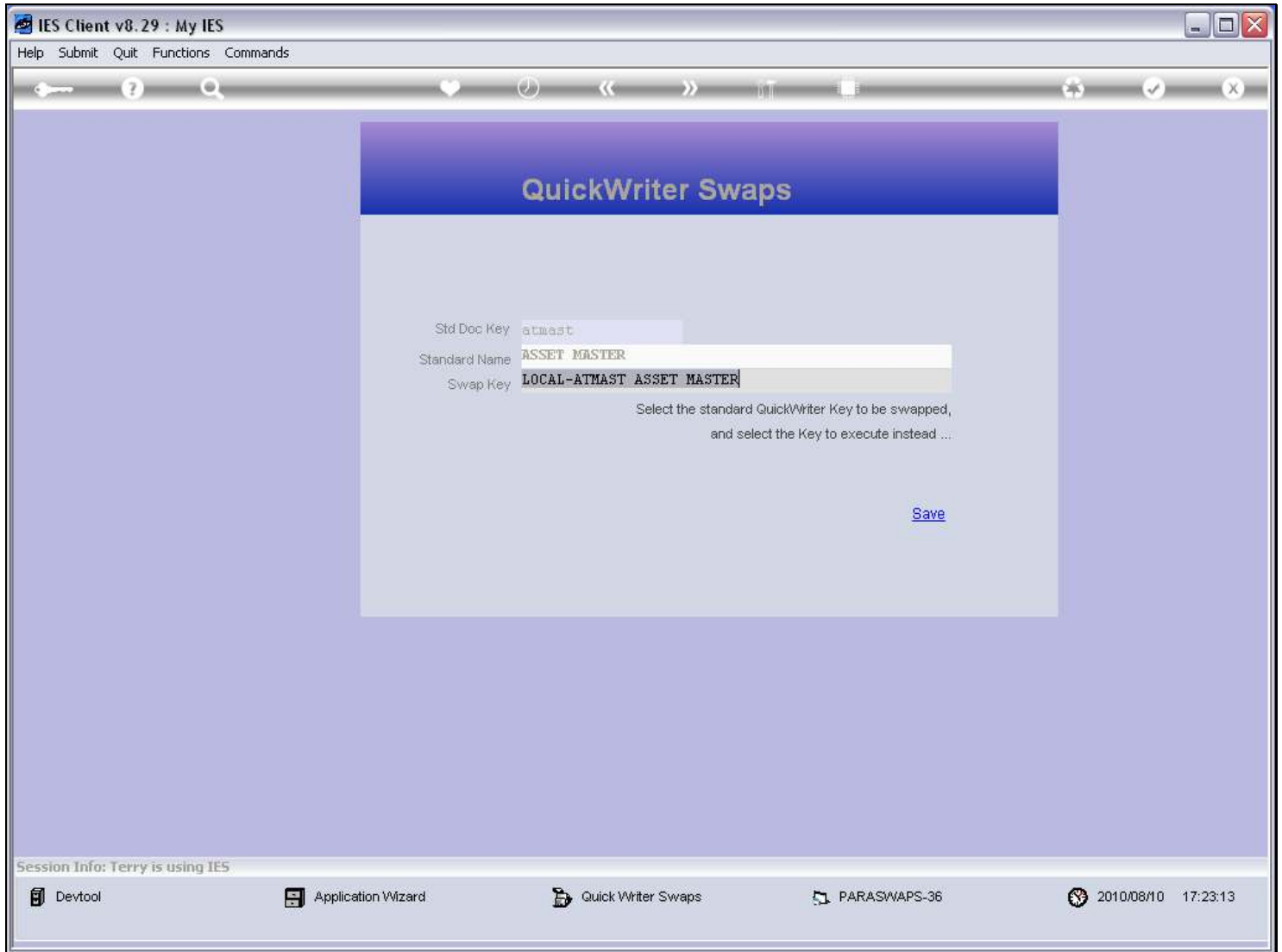
So now we have a Swap registered. If we ever want to remove the Swap, we can do so.

Slide 13 - Slide 13



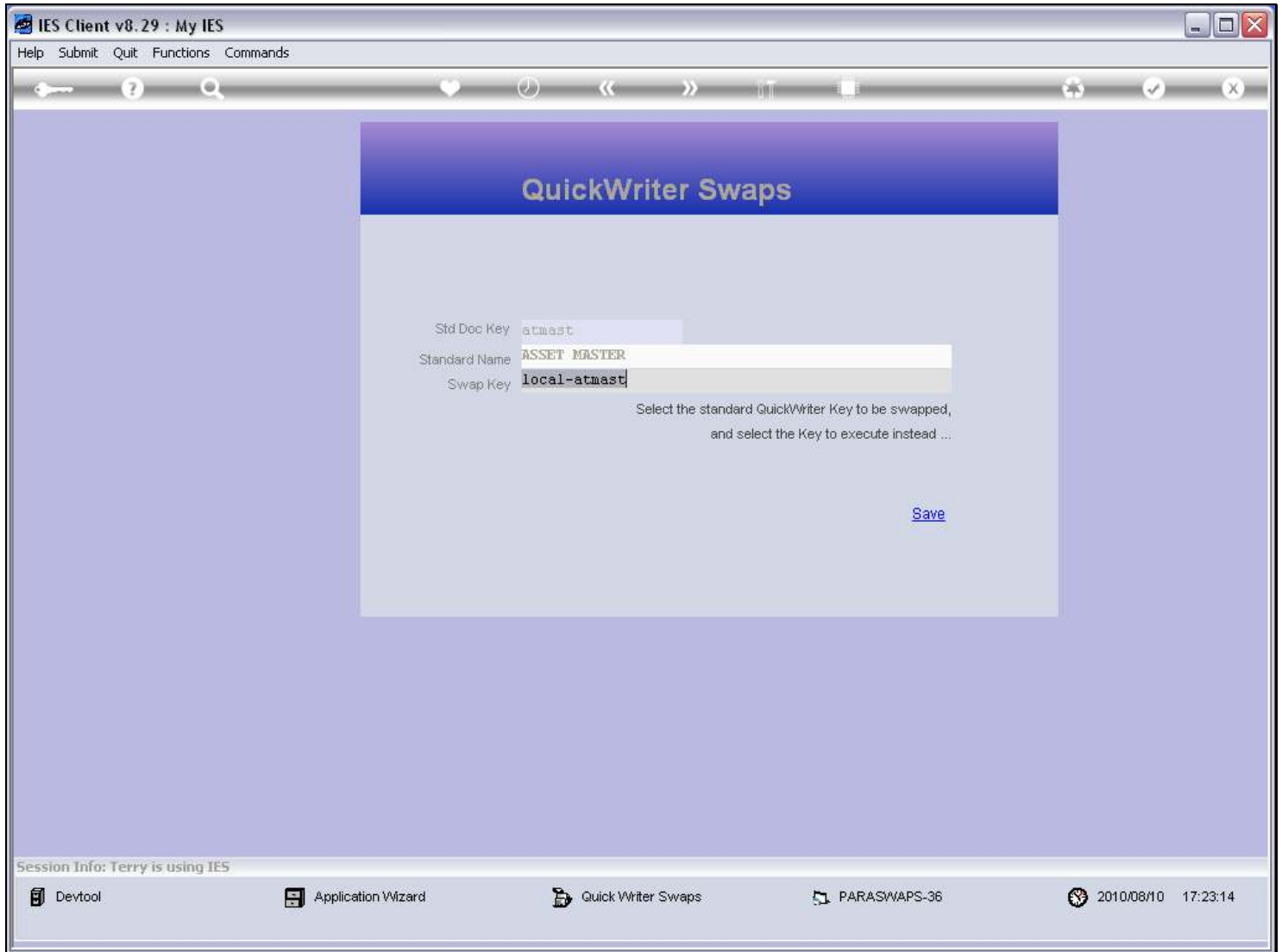
Slide notes

Slide 14 - Slide 14



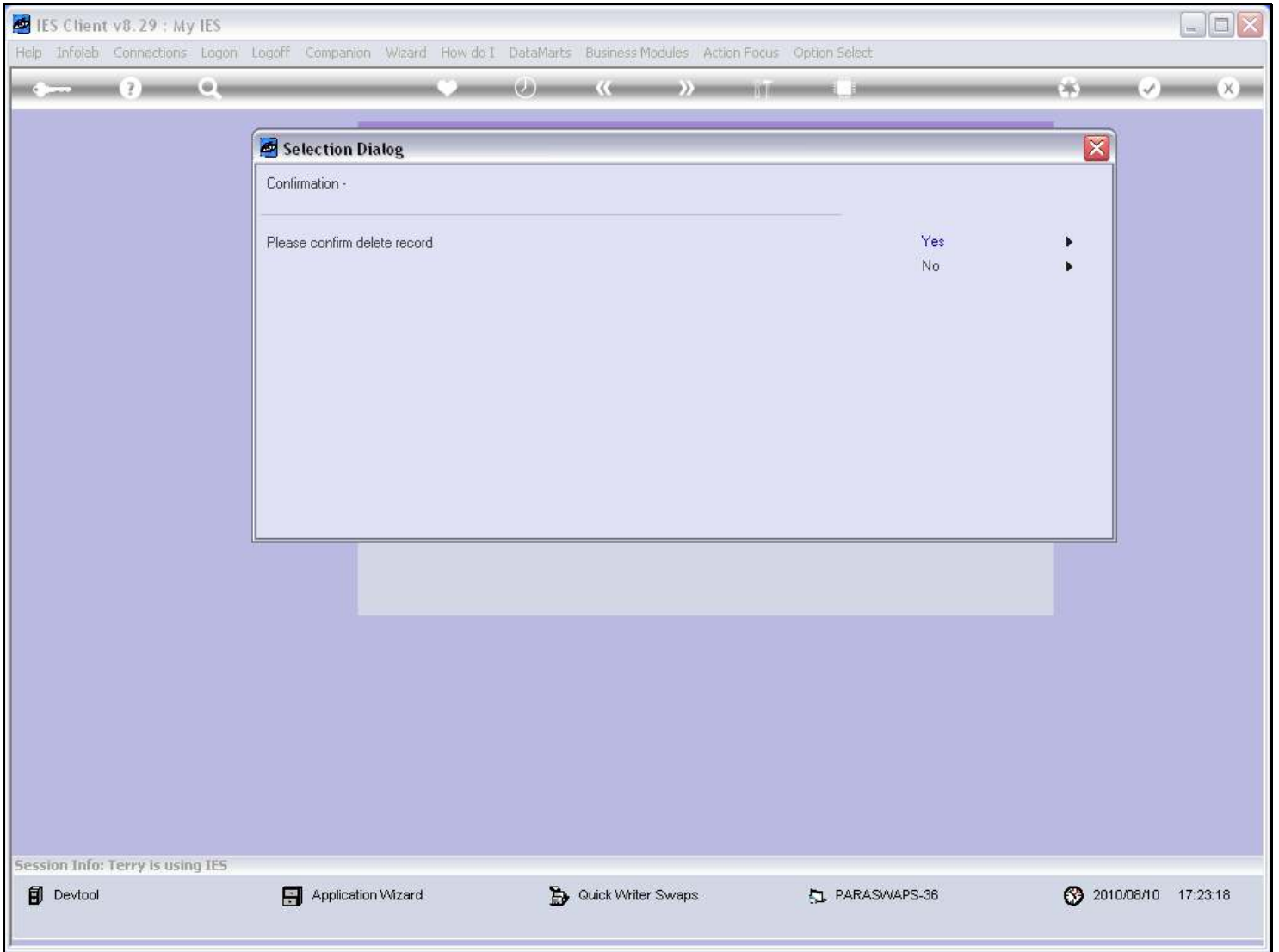
Slide notes

Slide 15 - Slide 15



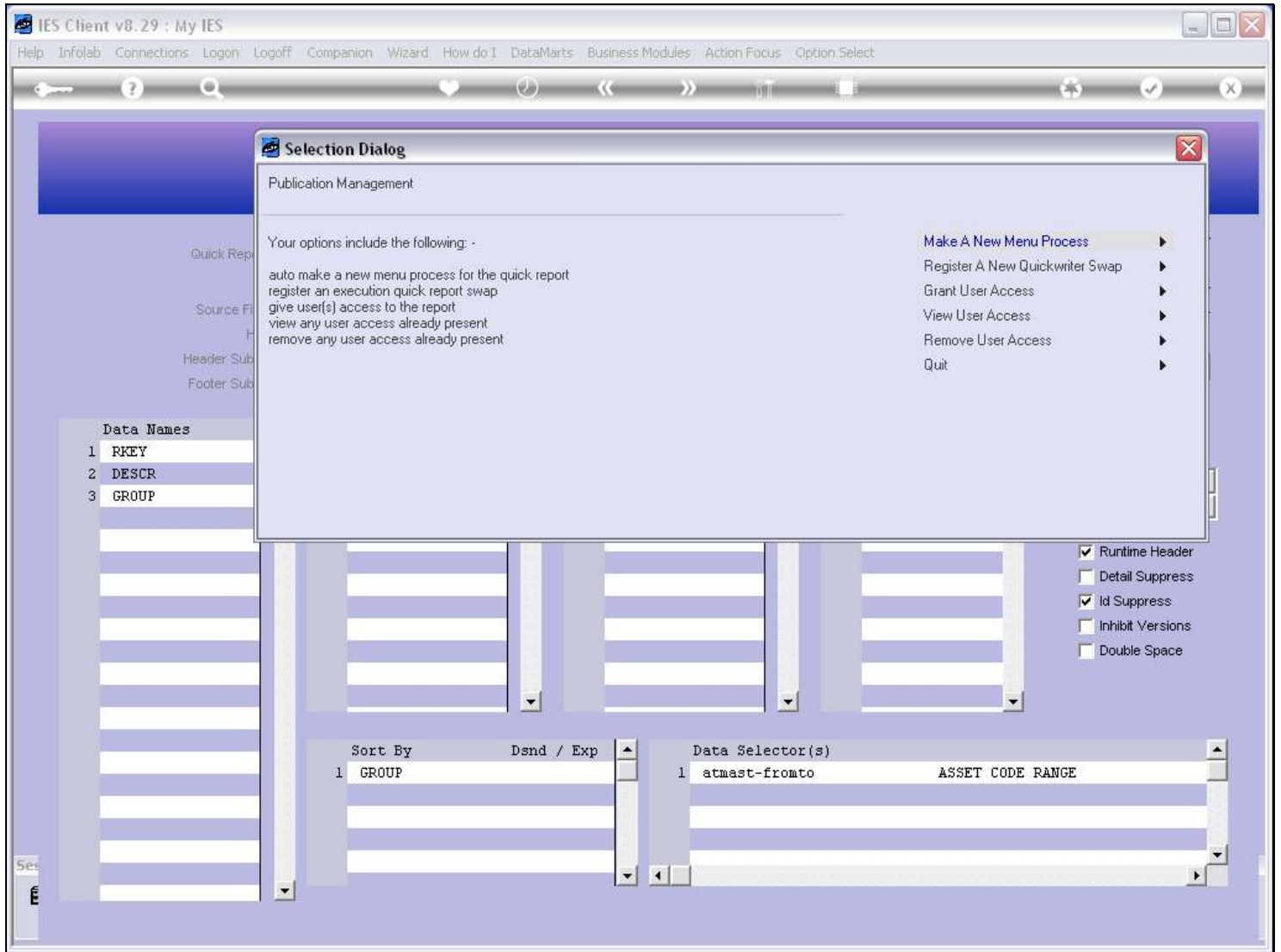
Slide notes

Slide 16 - Slide 16



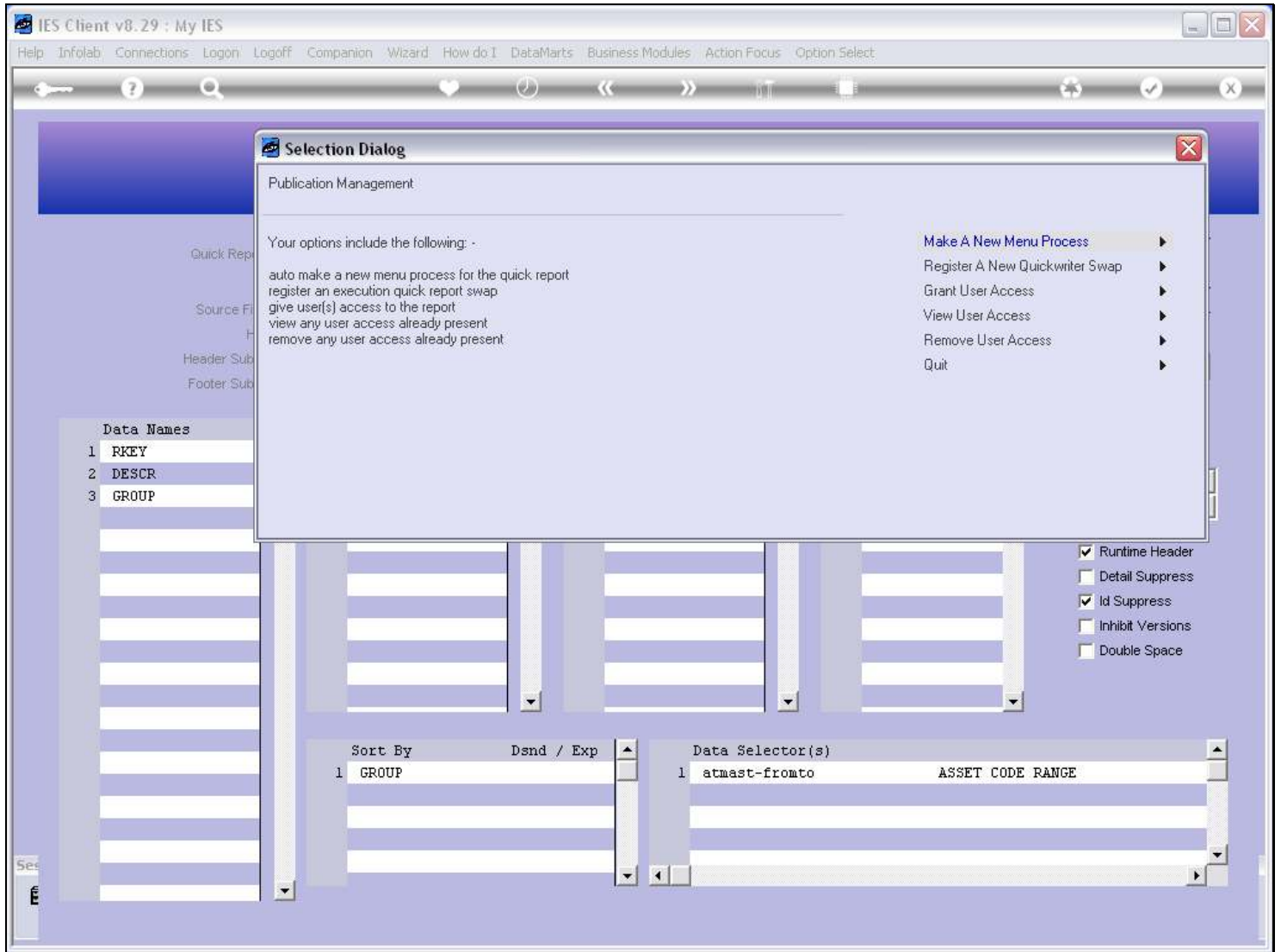
Slide notes

Slide 17 - Slide 17



Slide notes

Slide 18 - Slide 18



Slide notes

Slide 19 - Slide 19

The screenshot shows the IES Client v8.29: My IES interface. The main window title is "IES Client v8.29 : My IES". The menu bar includes "Help", "Submit", "Quit", "Functions", and "Commands". The toolbar contains icons for search, home, back, forward, and other navigation functions. The main content area is titled "QUICK REPORTS" and features a "SAVE" button in the top right corner.

Configuration fields include:

- Quick Report Key: local-atmast
- *Descr: Asset Master
- Source Filename: atmast
- Heading: Asset Master
- Header Subroutine: (empty)
- Footer Subroutine: (empty)

Navigation links on the right side include:

- Select DataNames
- Re-select Column Order
- Select Breaks
- Select Page Breaks
- Select Totals
- Select Sorts
- Select Data Selectors
- Query Report Width

Four main configuration panels are visible:

- Data Names:** 1 RKEY, 2 DESCR, 3 GROUP
- Breaks:** 1 GROUP
- Page Breaks:** 1
- Totals:** 1

Additional settings on the right include:

- Verb: list
- Type: 2: Rep / Qty
- Runtime Header
- Detail Suppress
- Id Suppress
- Inhibit Versions
- Double Space

At the bottom, there are two more panels:

- Sort By:** Dsmd / Exp, 1 GROUP
- Data Selector(s):** 1 atmast-fromto ASSET CODE RANGE

Slide notes

And now the Swap has been removed.