

Slide 1 - Slide 1

IES Client v8.29 : My IES

Help Submit Quit Functions Commands

IES REPORTS AND QUERIES: - User Instructions

NAME: CREDITOR LISTING (NAME AND CODE ONLY)

1: - CHOOSE VERSION [Versions](#)

Report Version: system version: RP / Creditor Accounts Listing

2: - CHOOSE SETTINGS

Format: report
 OutPut: FILE
 File-Type: txt text file
 Template: 04: Infolab
 Report Header: AP / Creditor Accounts Listing

3: - CHOOSE DATA SELECTOR [Change Selector](#)

choose from 6 data selectors
 Data Selector: cred-open OPEN CREDITORS

4: - TO e-MAIL THE RESULTS Priority: normal
 Despatch By E-Mail Mail Drive *

Mail To:
 Mail Title: Creditor Listing (name and code only)
 Message Body: report by mail

5: - ADAPT DATA SELECTION (if prompts are present) [How to define MY CHOICE](#)

Selection Tip	My Choice
1 Group No =	[]

Nex Pre Add Ins Ed Del

6: - Record Select:

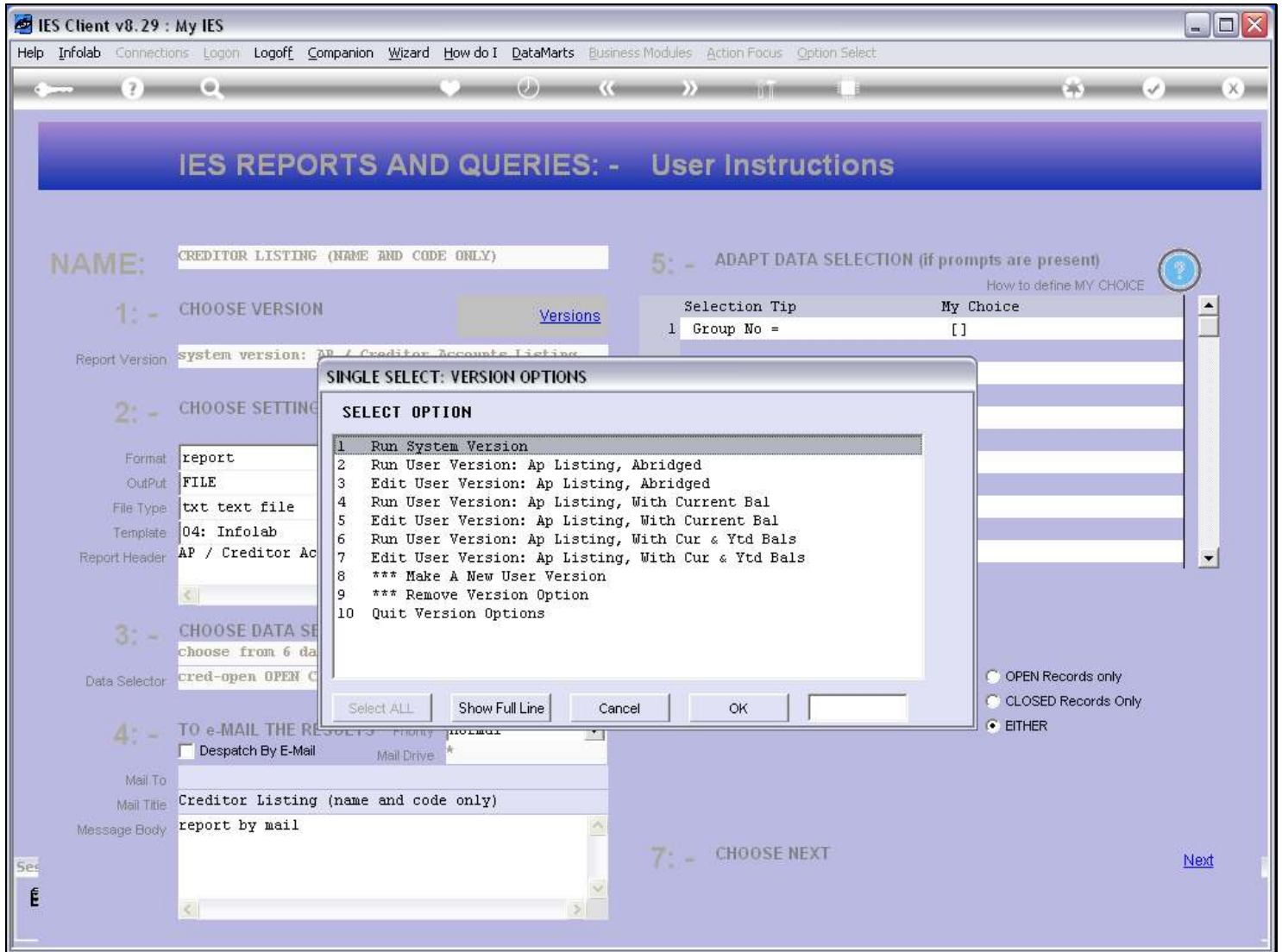
OPEN Records only
 CLOSED Records Only
 EITHER

7: - CHOOSE NEXT [Next](#)

Slide notes

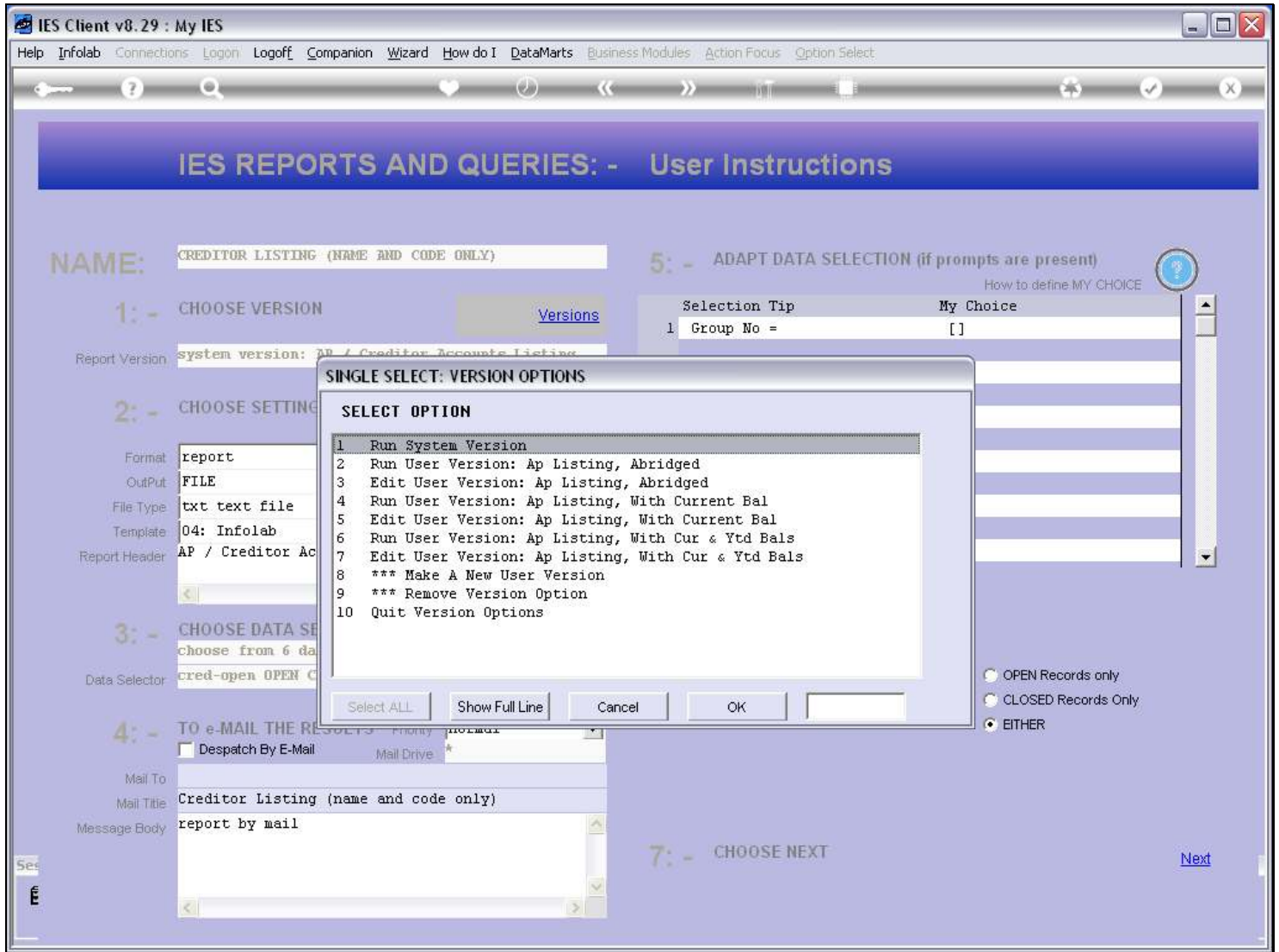
A User Version that is no longer wanted can be easily removed.

Slide 2 - Slide 2



Slide notes

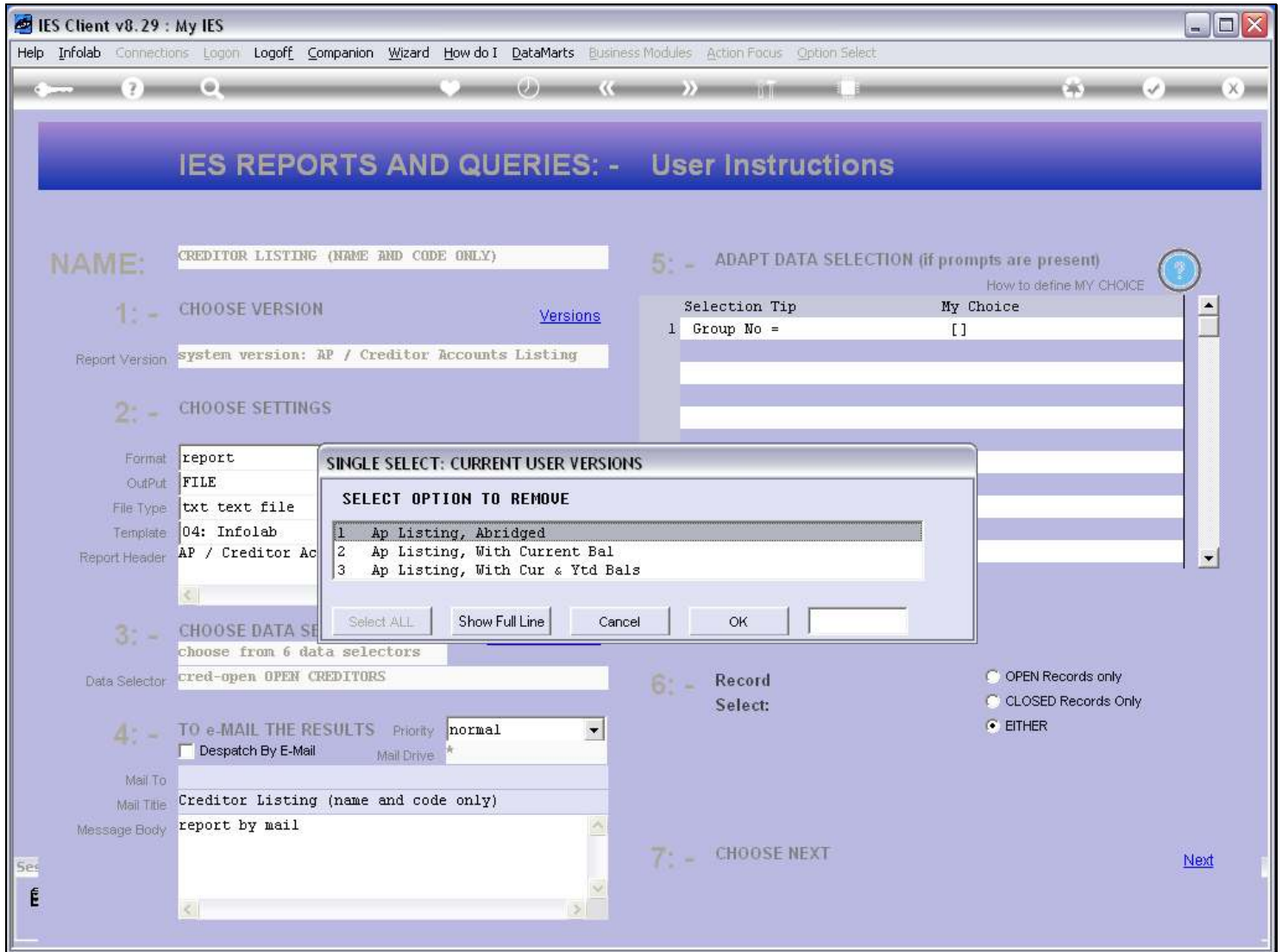
Slide 3 - Slide 3



Slide notes

Just choose 'Remove Version'.

Slide 4 - Slide 4



Slide notes

And select the Version to remove.

Slide 5 - Slide 5

The screenshot shows the IES Client v8.29: My IES interface. The main window title is "IES Client v8.29 : My IES". The menu bar includes Help, Infolab, Connections, Logon, Logoff, Companion, Wizard, How do I, DataMarts, Business Modules, Action Focus, and Option Select. The toolbar contains icons for search, home, back, forward, and refresh. The main content area is titled "IES REPORTS AND QUERIES: - User Instructions".

NAME: CREDITOR LISTING (NAME AND CODE ONLY)

1: - CHOOSE VERSION [Versions](#)
Report Version: system version: AP / Creditor Accounts Listing

2: - CHOOSE SETTINGS
Format: report
Output: FILE
File Type: txt text file
Template: 04: Infolab
Report Header: AP / Creditor Ac

3: - CHOOSE DATA SE
choose from 6 data selectors
Data Selector: cred-open OPEN CREDITORS

4: - TO e-MAIL THE RESULTS Priority: normal
 Despatch By E-Mail Mail Drive *

Mail To: _____
Mail Title: Creditor Listing (name and code only)
Message Body: report by mail

5: - ADAPT DATA SELECTION (if prompts are present) [How to define MY CHOICE](#)

Selection Tip	My Choice
1 Group No =	[]

SINGLE SELECT: CURRENT USER VERSIONS
SELECT OPTION TO REMOVE

1	Ap Listing, Abridged
2	Ap Listing, With Current Bal
3	Ap Listing, With Cur & Ytd Bals

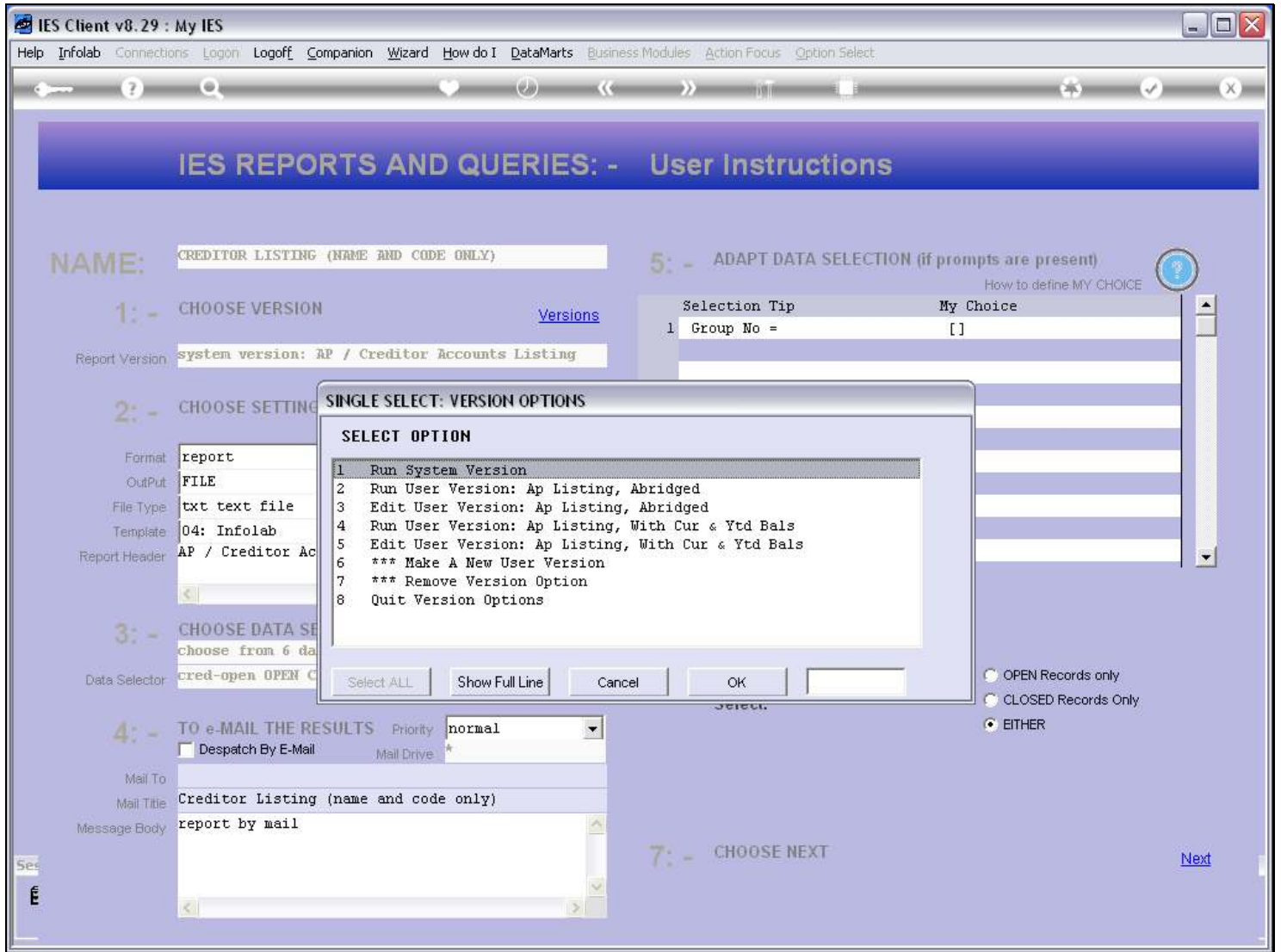
Buttons: Select ALL, Show Full Line, Cancel, OK

6: - Record Select:
 OPEN Records only
 CLOSED Records Only
 EITHER

7: - CHOOSE NEXT [Next](#)

Slide notes

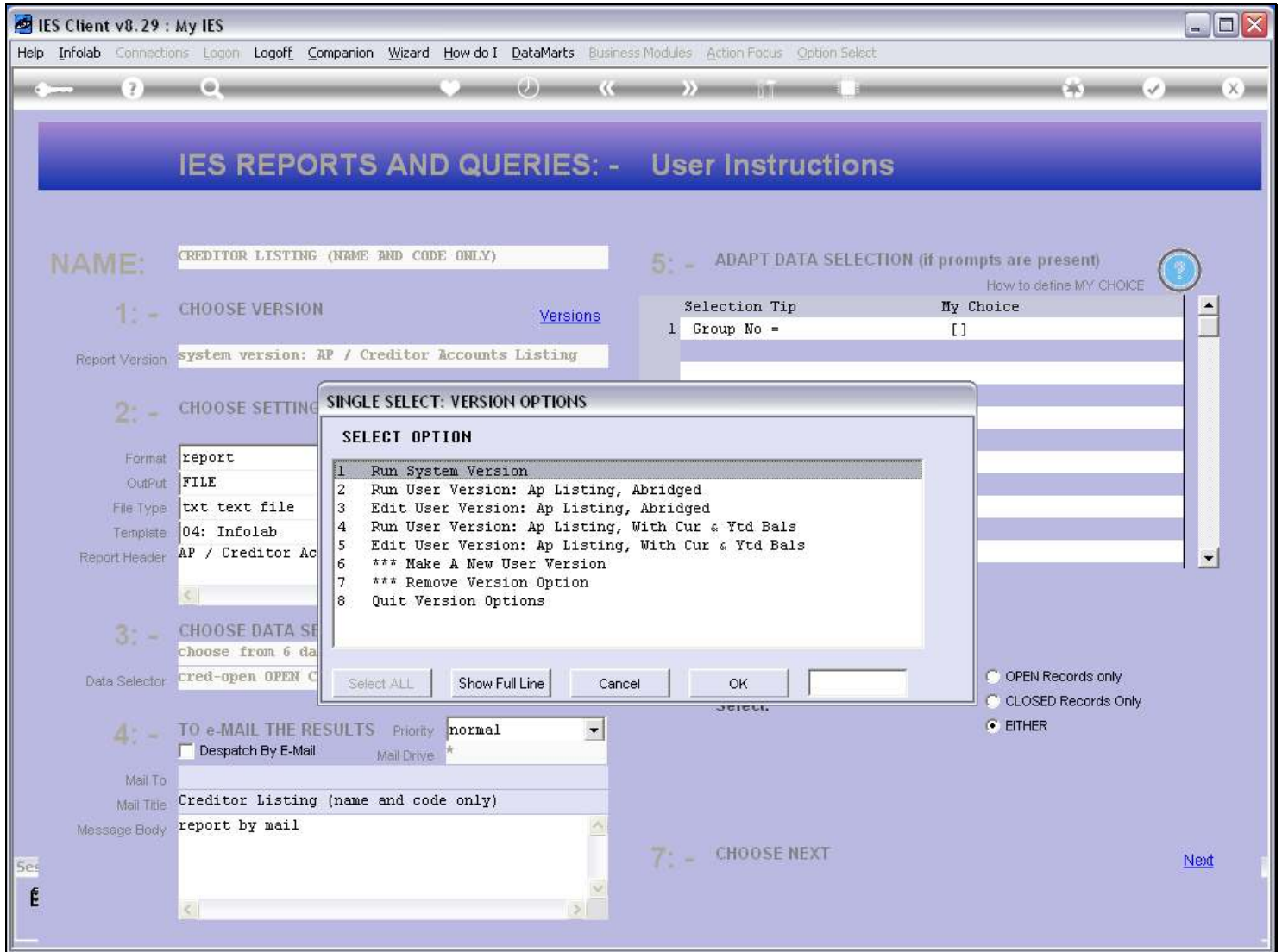
Slide 6 - Slide 6



Slide notes

And then it's gone.

Slide 7 - Slide 7



Slide notes

Slide 8 - Slide 8

The screenshot shows the IES Client v8.29: My IES interface. The title bar includes 'Help', 'Submit', 'Quit', 'Functions', and 'Commands'. The main content area is titled 'IES REPORTS AND QUERIES: - User Instructions' and contains the following steps:

- 1: - CHOOSE VERSION** (with a [Versions](#) link). The 'Report Version' field contains 'system version: AP / Creditor Accounts Listing'.
- 2: - CHOOSE SETTINGS**. Fields include: 'Format' (report), 'OutPut' (FILE), 'File Type' (txt text file), 'Template' (04: Infolab), and 'Report Header' (AP / Creditor Accounts Listing).
- 3: - CHOOSE DATA SELECTOR** (with a [Change Selector](#) link). The 'Data Selector' field contains 'cred-open OPEN CREDITORS'.
- 4: - TO e-MAIL THE RESULTS** (with a [Priority](#) dropdown set to 'normal'). Includes a checkbox for 'Despatch By E-Mail', a 'Mail Drive' field, 'Mail To' field, 'Mail Title' (Creditor Listing (name and code only)), and 'Message Body' (report by mail).
- 5: - ADAPT DATA SELECTION (if prompts are present)** (with a [How to define MY CHOICE](#) link). A table is shown with columns 'Selection Tip' and 'My Choice'. The first row contains '1 Group No =' and '[]'. Below the table are buttons: 'Nex', 'Pre', 'Add', 'Ins', 'Ed', 'Del'.
- 6: - Record Select:** Includes radio buttons for 'OPEN Records only', 'CLOSED Records Only', and 'EITHER'.
- 7: - CHOOSE NEXT** (with a [Next](#) link).

Slide notes