

Slide 1 - Slide 1

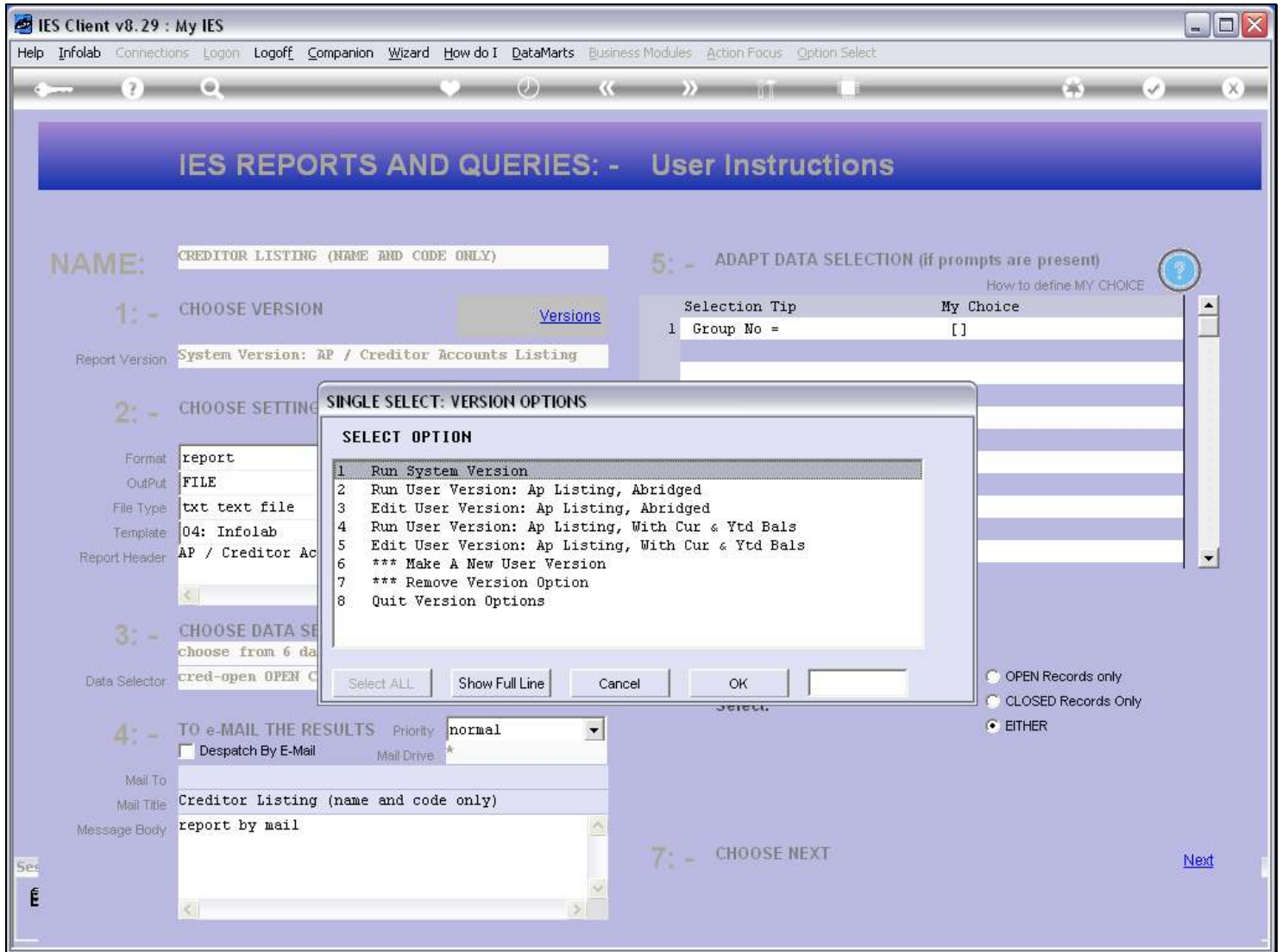
The screenshot shows the IES Client v8.29: My IES interface. The title bar includes 'Help', 'Submit', 'Quit', 'Functions', and 'Commands'. The main window has a purple header with the text 'IES REPORTS AND QUERIES: - User Instructions'. Below this, the interface is divided into several sections:

- NAME:** A text field containing 'CREDITOR LISTING (NAME AND CODE ONLY)'.
- 1: - CHOOSE VERSION:** A 'Report Version' dropdown menu set to 'System Version: AP / Creditor Accounts Listing'. A 'Versions' link is present.
- 2: - CHOOSE SETTINGS:** A series of dropdown menus for 'Format' (report), 'OutPut' (FILE), 'File-Type' (txt text file), 'Template' (04: Infolab), and 'Report Header' (AP / Creditor Accounts Listing).
- 3: - CHOOSE DATA SELECTOR:** A 'Data Selector' dropdown menu set to 'cred-open OPEN CREDITORS'. A 'Change Selector' link is present.
- 4: - TO e-MAIL THE RESULTS:** Includes a 'Priority' dropdown (normal), a 'Despatch By E-Mail' checkbox, a 'Mail Drive' dropdown (*), 'Mail To' field, 'Mail Title' (Creditor Listing (name and code only)), and a 'Message Body' text area (report by mail).
- 5: - ADAPT DATA SELECTION (if prompts are present):** A table with columns 'Selection Tip' and 'My Choice'. The first row shows '1 Group No =' and '[]'. Below the table are buttons: 'Nex', 'Pre', 'Add', 'Ins', 'Ed', 'Del'.
- 6: - Record Select:** Radio button options for 'OPEN Records only', 'CLOSED Records Only', and 'EITHER'.
- 7: - CHOOSE NEXT:** A 'Next' link.

Slide notes

We may adapt the Report Heading on User Versions.

Slide 2 - Slide 2



Slide notes

Slide 3 - Slide 3

IES Client v8.29 : My IES

Help Infolab Connections Logon Logoff Companion Wizard How do I DataMarts Business Modules Action Focus Option Select

IES REPORTS AND QUERIES: - User Instructions

NAME: CREDITOR LISTING (NAME AND CODE ONLY)

1: - CHOOSE VERSION [Versions](#)

Report Version: System Version: AP / Creditor Accounts Listing

2: - CHOOSE SETTING

Format: report
OutPut: FILE
File Type: txt text file
Template: 04: Infolab
Report Header: AP / Creditor Ac

3: - CHOOSE DATA SELECTION

choose from 6 data selectors
Data Selector: cred-open OPEN C

4: - TO e-MAIL THE RESULTS Priority: normal

Despatch By E-Mail Mail Drive *

Mail To: _____
Mail Title: Creditor Listing (name and code only)
Message Body: report by mail

5: - ADAPT DATA SELECTION (if prompts are present) [How to define MY CHOICE](#)

Selection Tip	My Choice
1 Group No =	[]

SINGLE SELECT: VERSION OPTIONS

SELECT OPTION

- 1 Run System Version
- 2 Run User Version: Ap Listing, Abridged
- 3 Edit User Version: Ap Listing, Abridged
- 4 Run User Version: Ap Listing, With Cur & Ytd Bals
- 5 Edit User Version: Ap Listing, With Cur & Ytd Bals
- 6 *** Make A New User Version
- 7 *** Remove Version Option
- 8 Quit Version Options

Select ALL Show Full Line Cancel OK

7: - CHOOSE NEXT [Next](#)

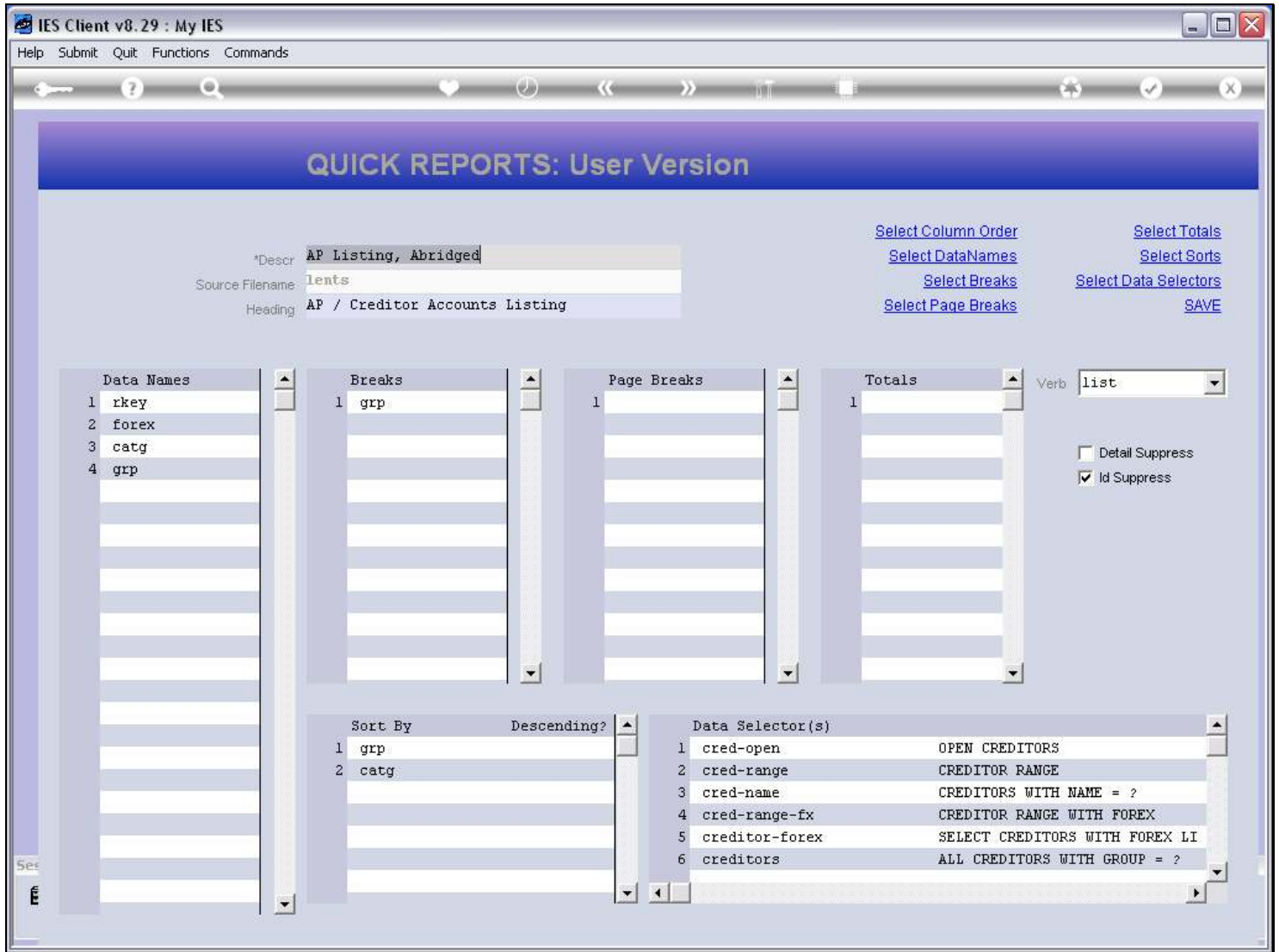
OPEN Records only
 CLOSED Records Only
 EITHER

Slide notes

Slide 4 - Slide 4

Slide notes

Slide 5 - Slide 5



Slide notes

When editing a User Version, we can change the standard Heading that will appear on the Report.

Slide 6 - Slide 6

Slide notes