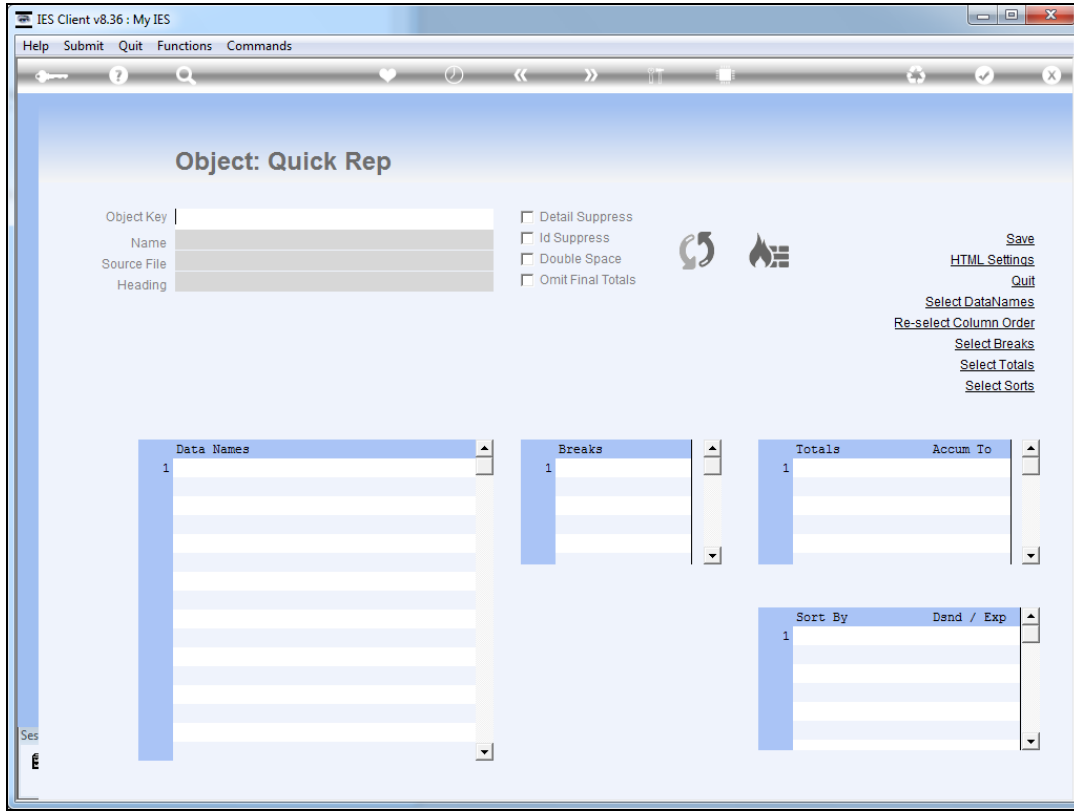
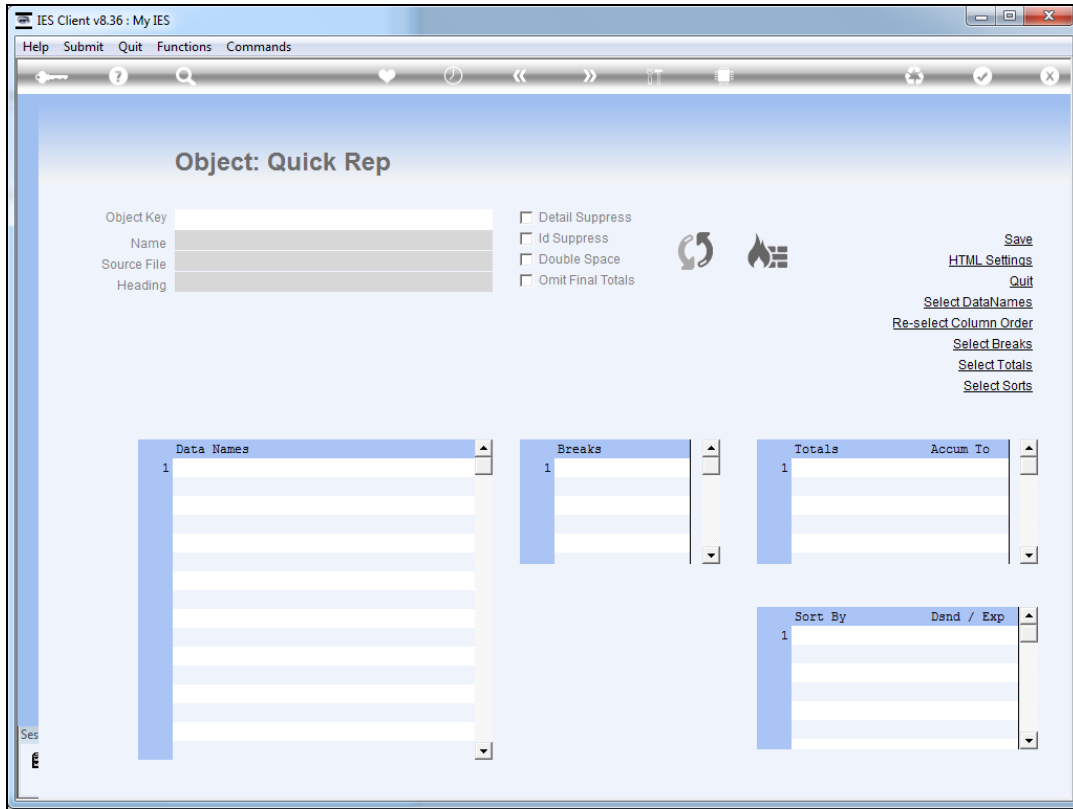


Slide 1

Slide notes: Quick Write Objects are like Quick Reports, except that they cannot be executed by themselves but may be included as objects within Document Writer and Web Writer reports. As such, Quick Write Objects enable reports within a report.

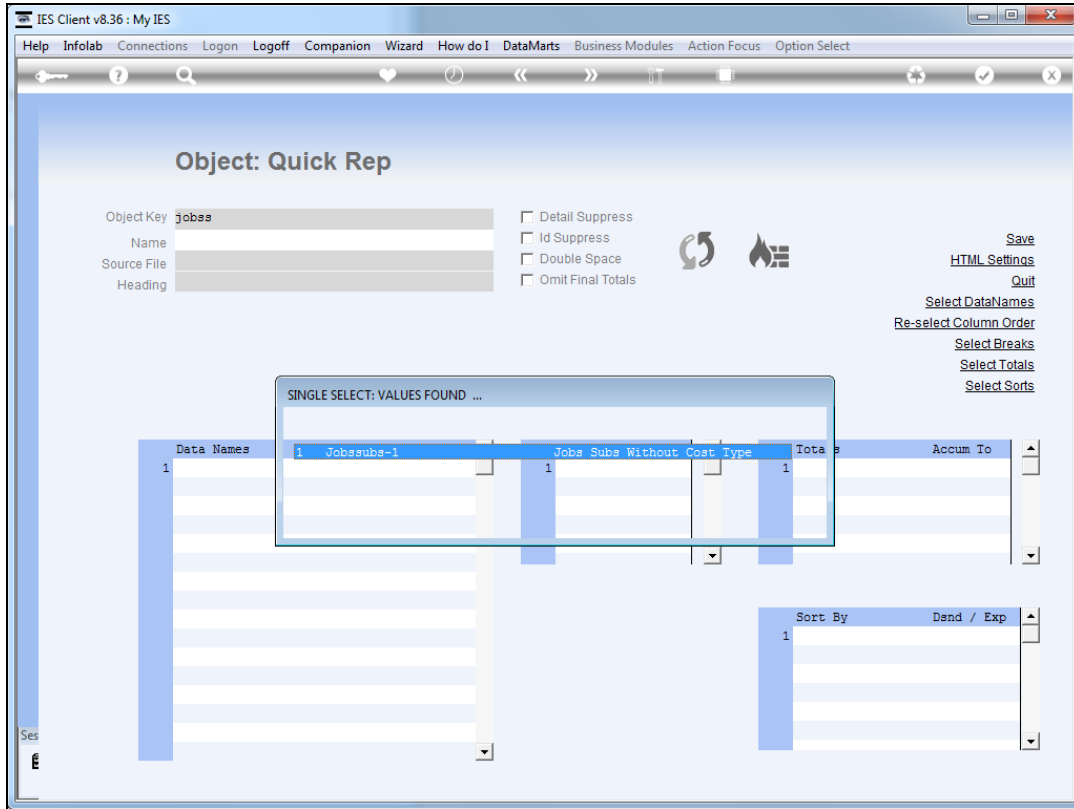


Slide 2
Slide notes:



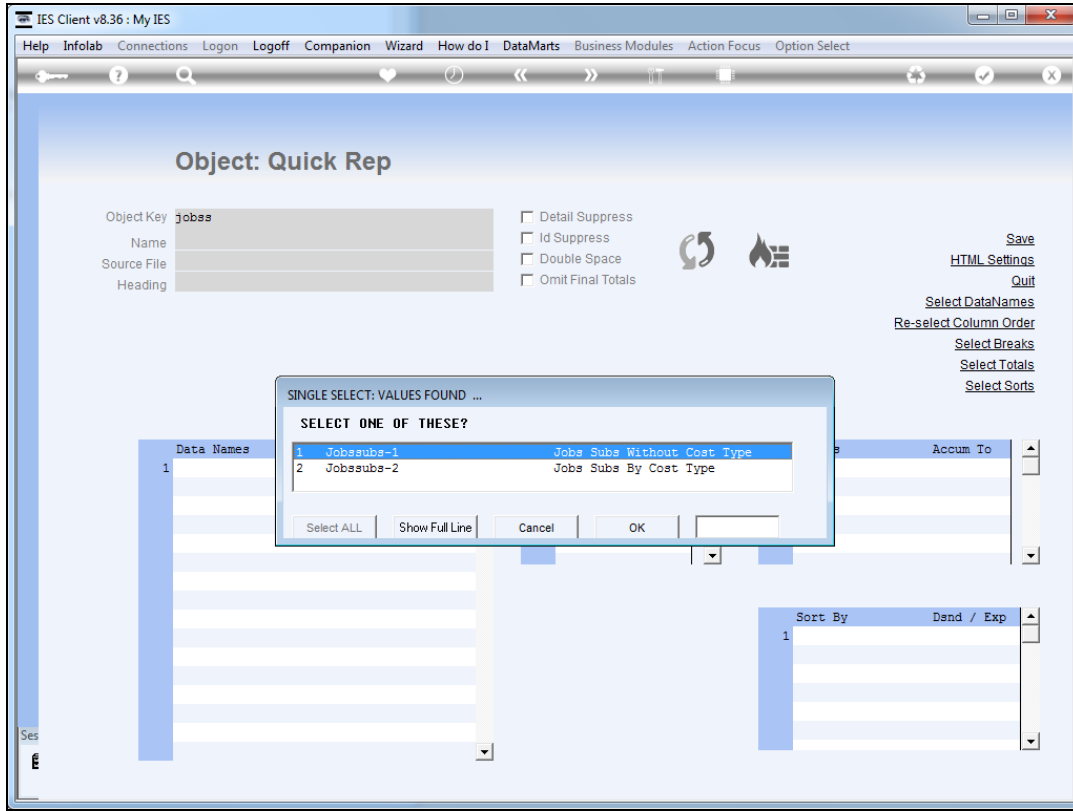
Slide 3

Slide notes:

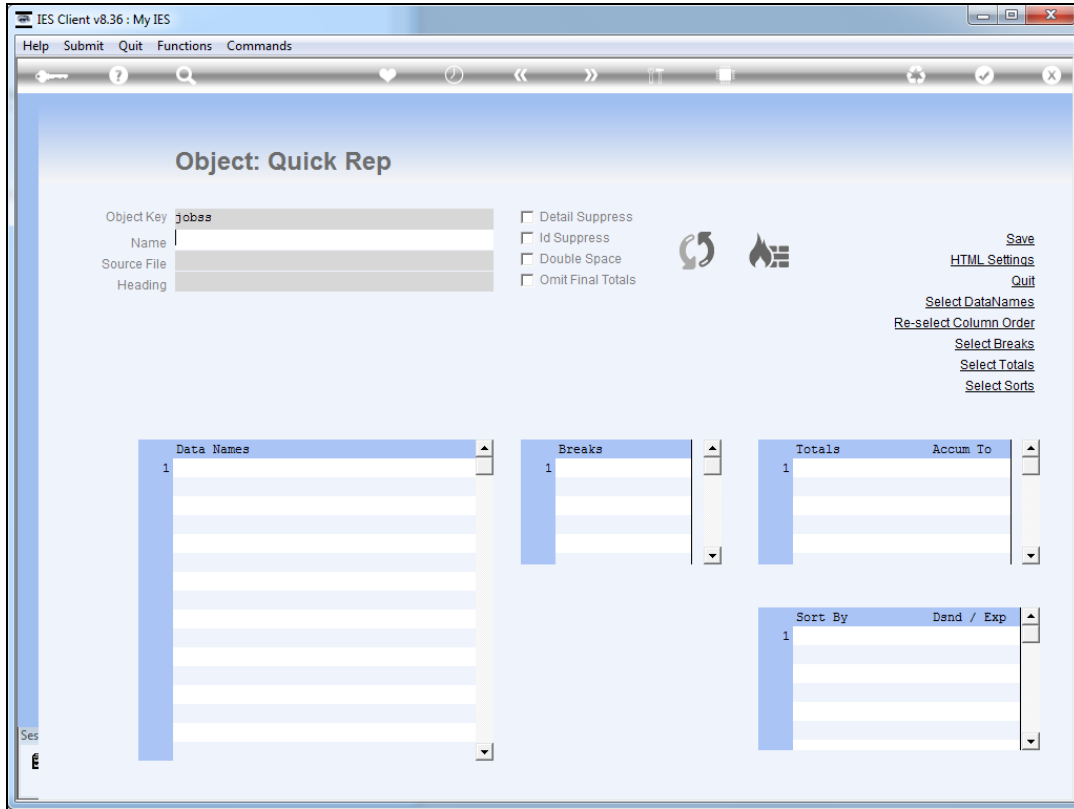


Slide 4

Slide notes:

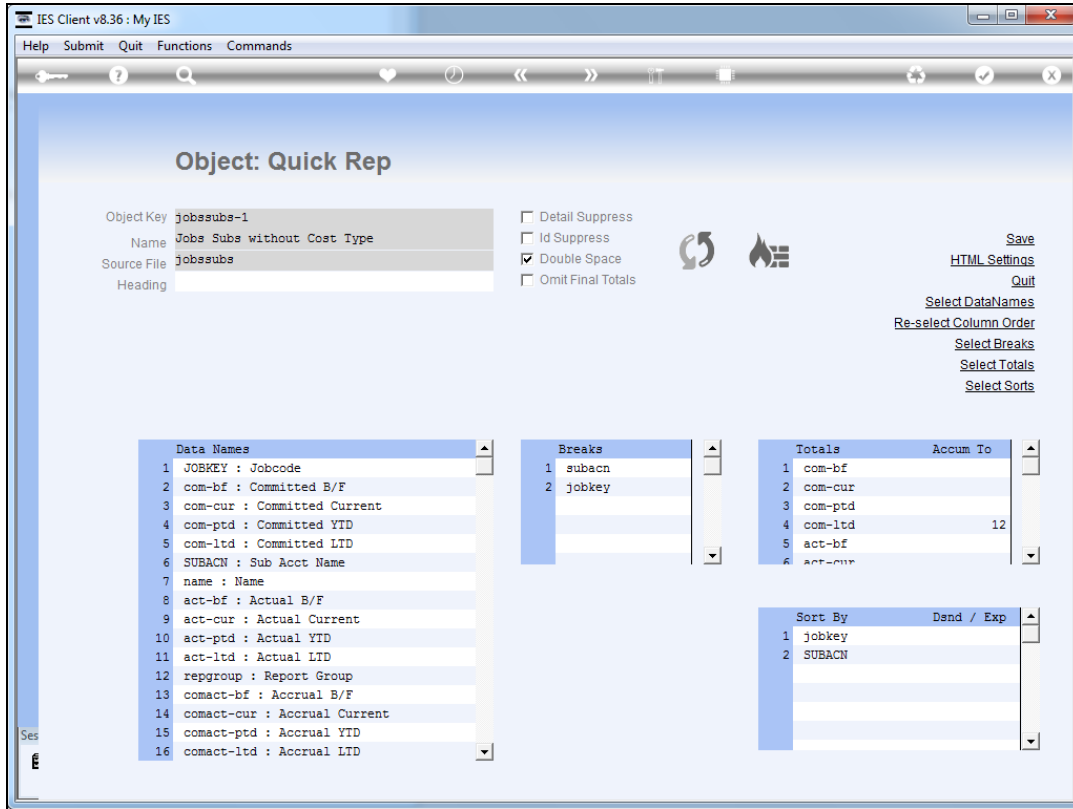


Slide 5
Slide notes:



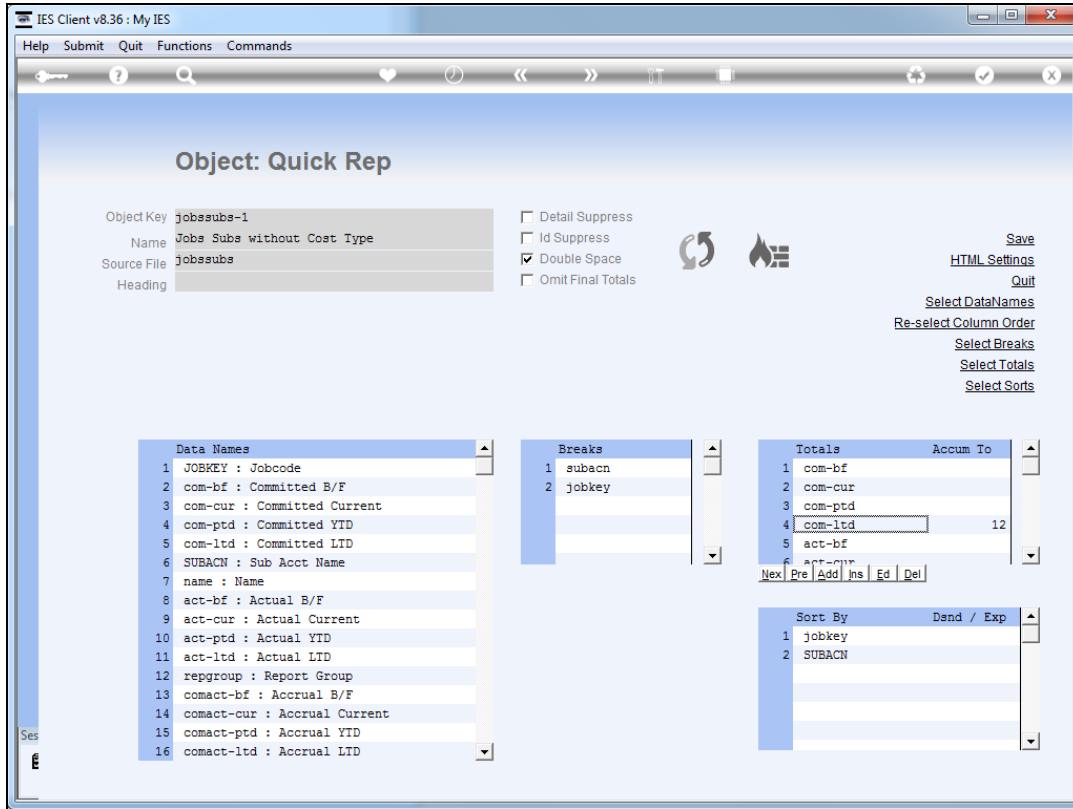
Slide 6

Slide notes:



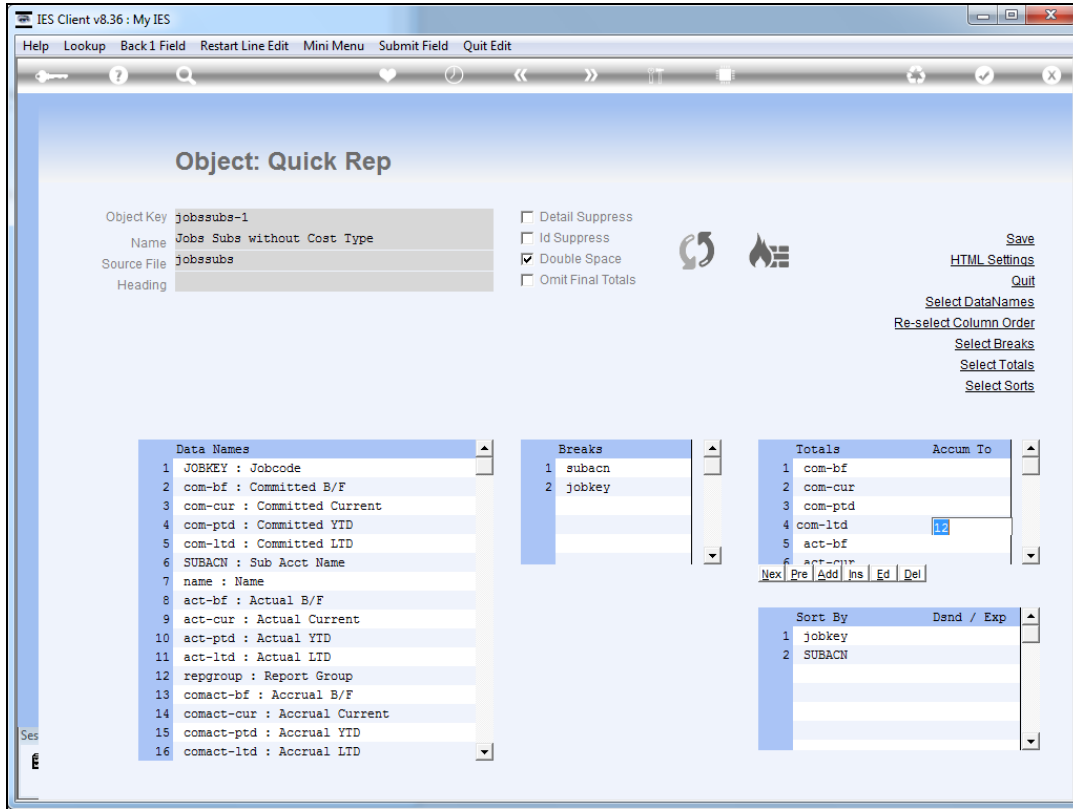
Slide 7

Slide notes: Quick Write Objects are defined in similar fashion to Quick Writer itself, and there are only a few aspects we need to point out that we should keep in mind. For example, a heading is only defined if it is wanted. We can leave the heading field blank if we do not want a main heading produced in the parent report.



Slide 8

Slide notes: And we can also accumulate any totals to the standard DocWriter variables if we need to use them elsewhere in the main report.



Slide 9
Slide notes:

Object: Quick Rep

Object Key **jobssubs-1** Detail Suppress
Name **Jobs Subs without Cost Type** Id Suppress
Source File **jobssubs** Double Space
Heading Omit Final Totals

[Save](#)
[HTML Settings](#)
[Quit](#)
[Select DataNames](#)
[Re-select Column Order](#)
[Select Breaks](#)
[Select Totals](#)
[Select Sorts](#)

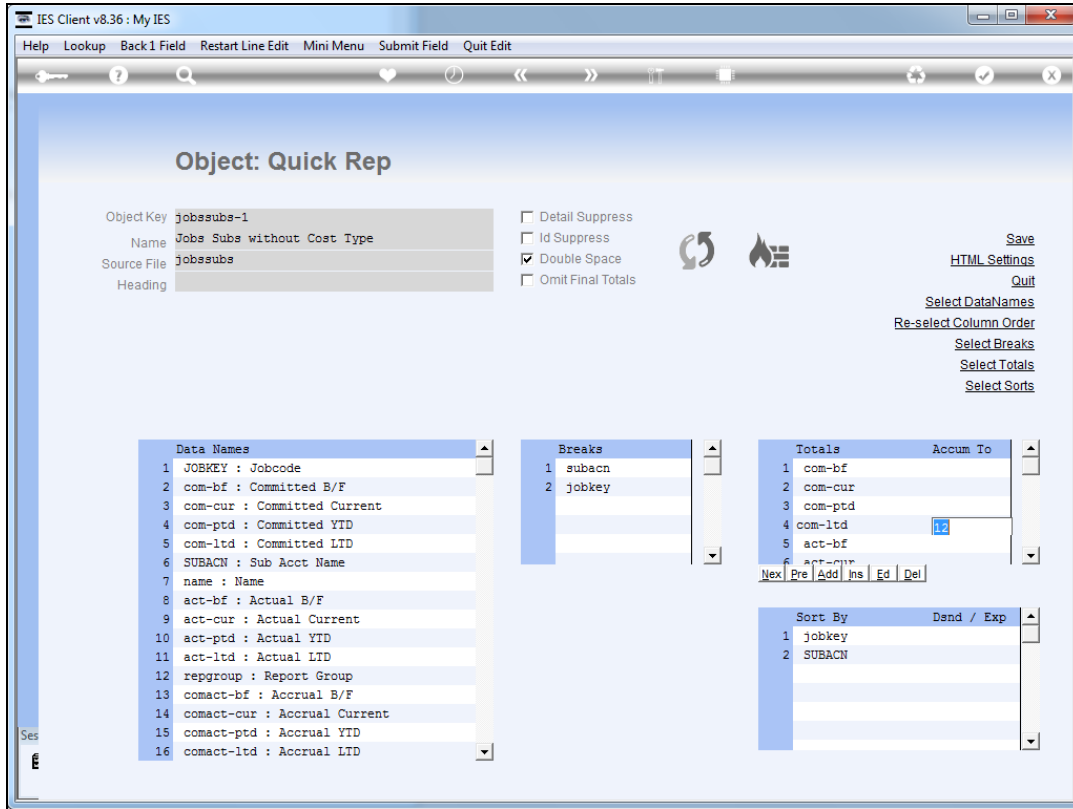
Data Names
1 JOBKEY : Jobcode
2 com-bf : Committed B/F
3 com-cur : Committed Current
4 com-ptd : Committed YTD
5 com-ltd : Committed LTD
6 SUBACN : Sub Acct Name
7 name : Name
8 act-bf : Actual B/F
9 act-cur : Actual Current
10 act-ptd : Actual YTD
11 act-ltd : Actual LTD
12 repgroup : Report Group
13 comact-bf : Accrual B/F
14 comact-cur : Accrual Current
15 comact-ptd : Accrual YTD
16 comact-ltd : Accrual LTD

Breaks
1 subacn
2 jobkey

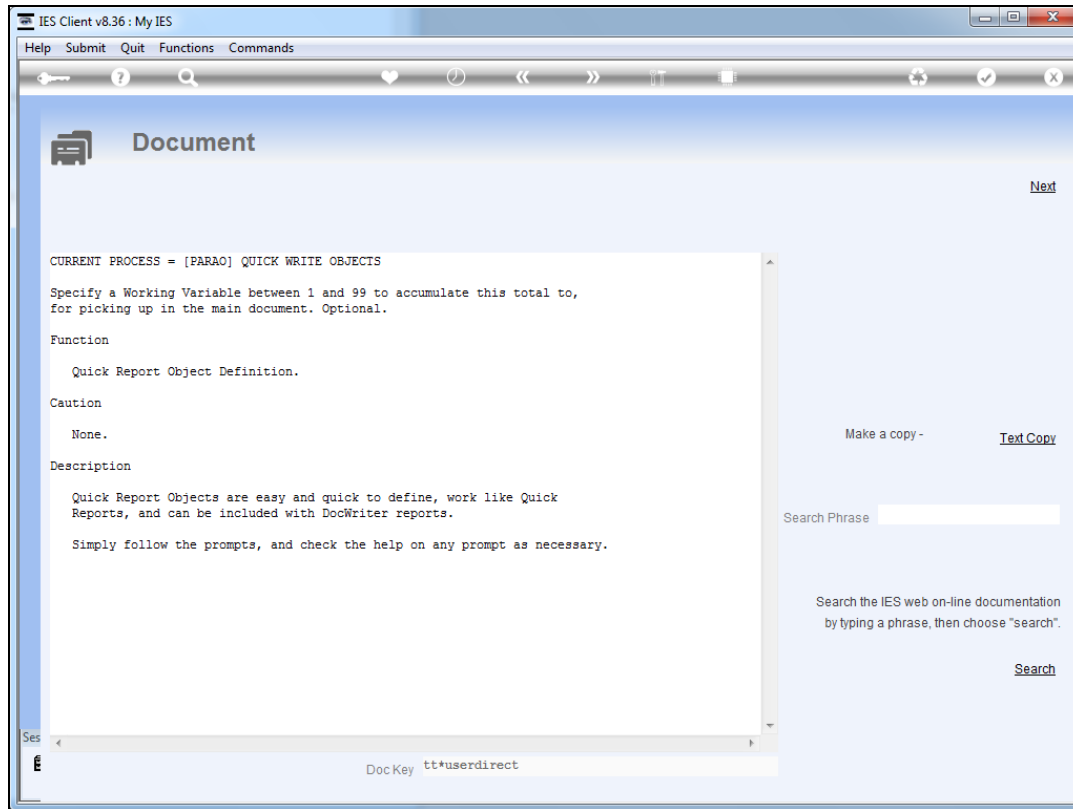
Totals	Accum To
1 com-bf	
2 com-cur	
3 com-ptd	
4 com-ltd	
5 act-bf	
6 act-cur	

Sort By	Dend / Exp
1 jobkey	
2 SUBACN	

Slide 10
Slide notes:

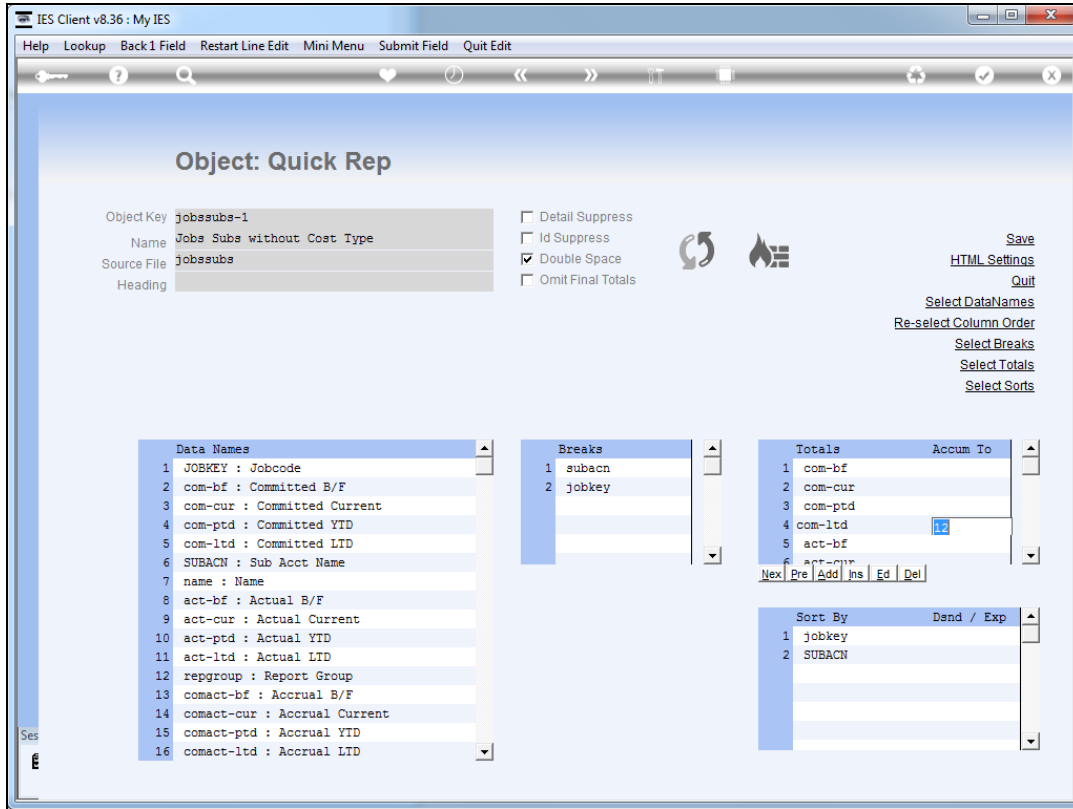


Slide 11
Slide notes:

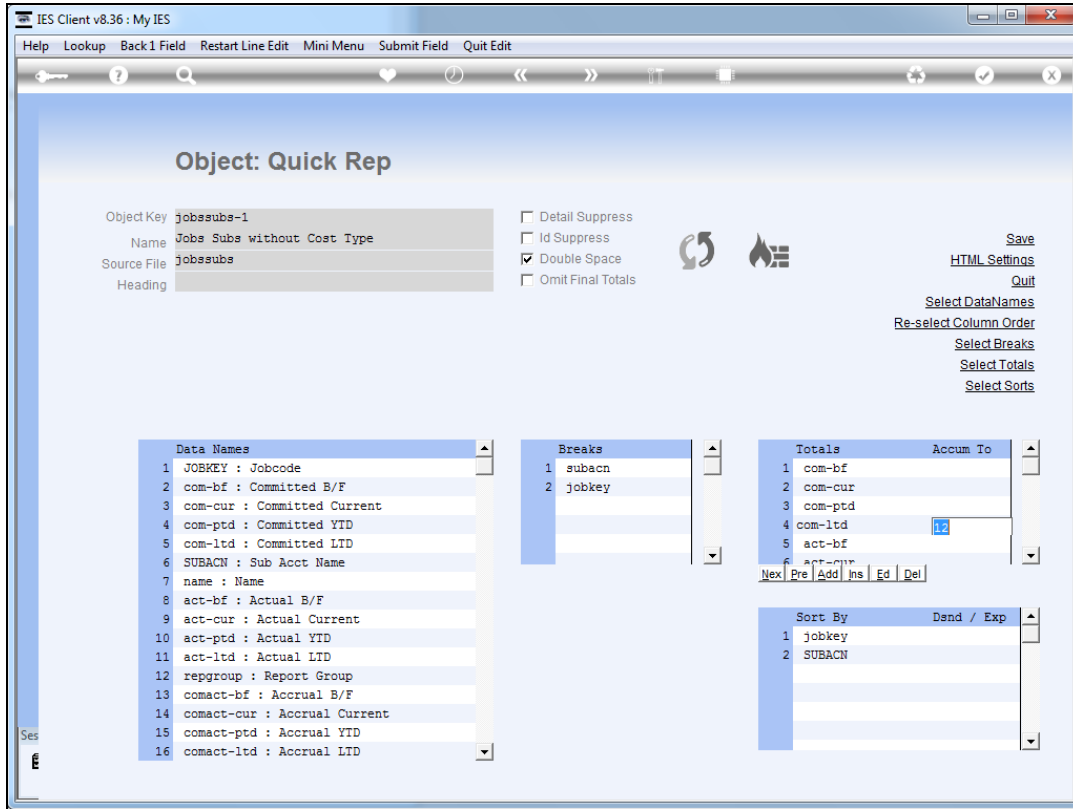


Slide 12

Slide notes: Working variables in the range 1 to 99 are available for total accumulation, and can be retrieved with a standard tag template in the parent report, as and where needed.

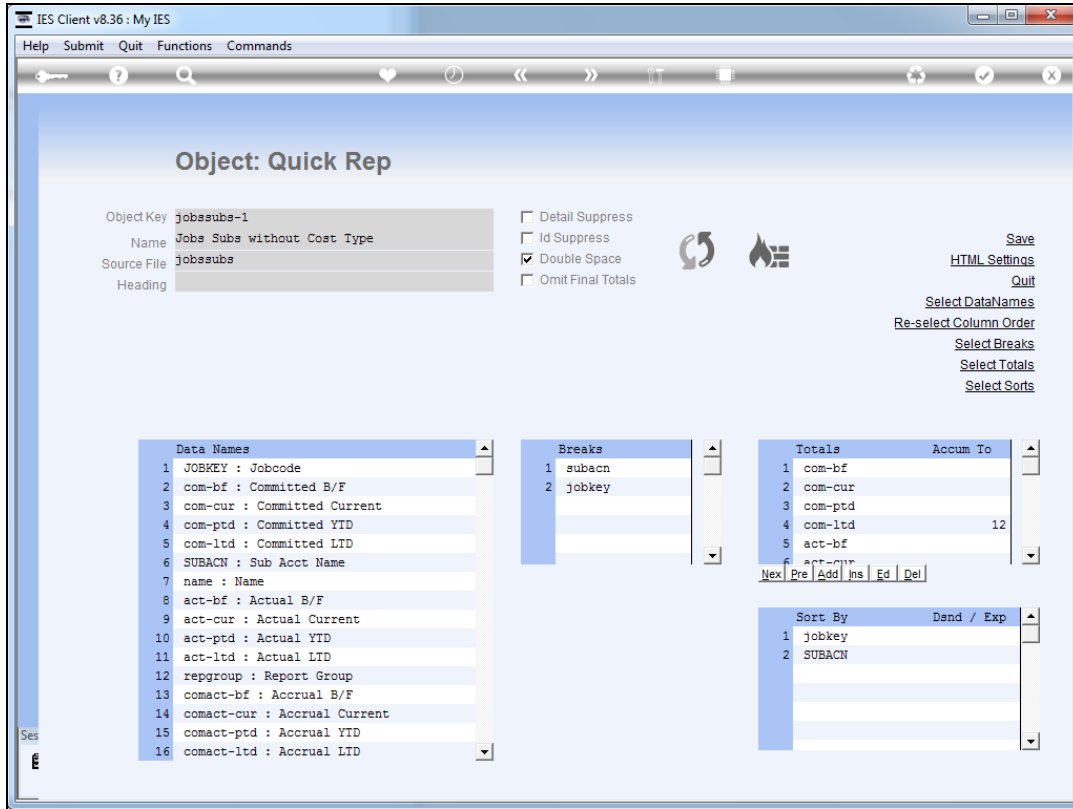


Slide 13
Slide notes:

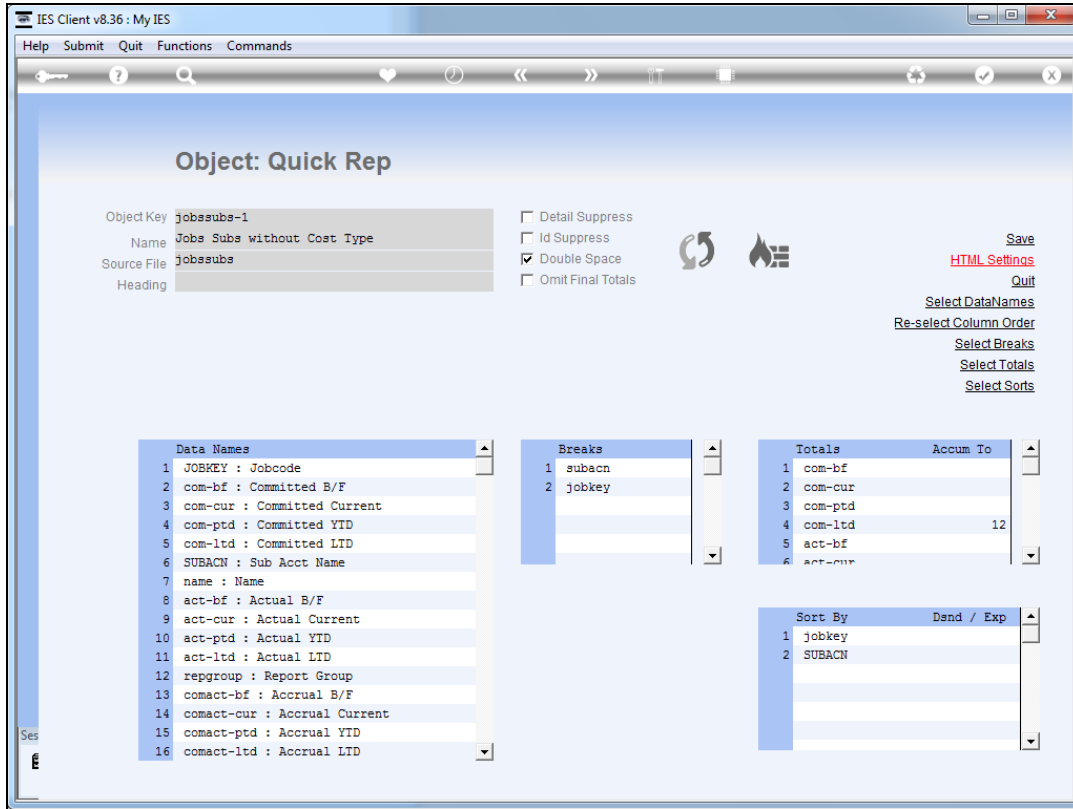


Slide 14

Slide notes: No data selection is defined on the Quick Write object. Instead, the data selection is specified at the Quick Write tag in the main report.

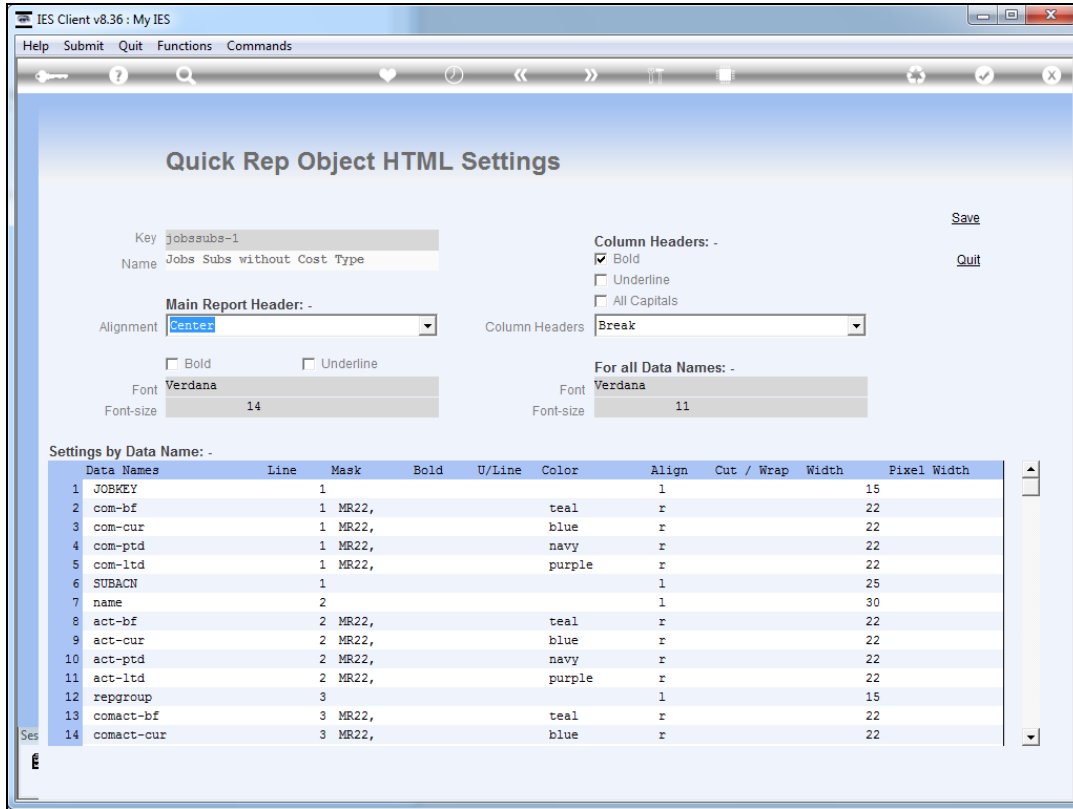


Slide 15
Slide notes:

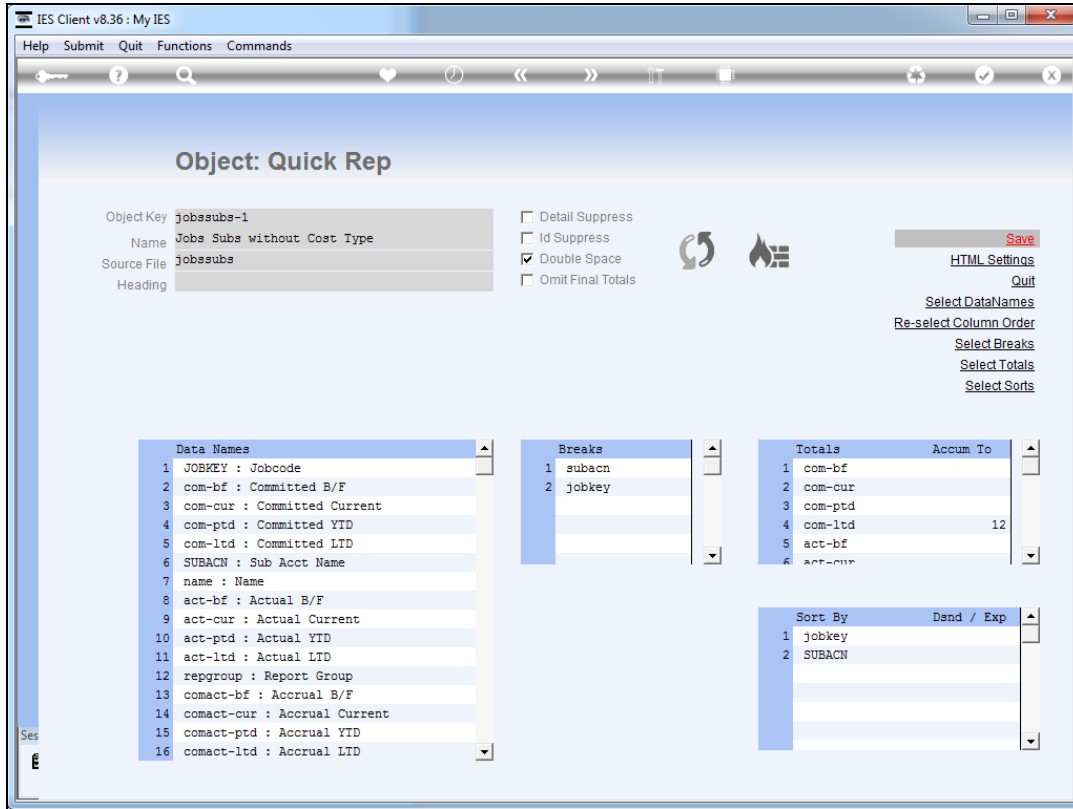


Slide 16

Slide notes: The standard HTML settings as available for Quick Writer is also available here.



Slide 17
 Slide notes:



Slide 18

Slide notes: All in all, Quick Write objects are really fast and easy to define in the same manner as with Quick Writer, and powerful in use for inclusion in parent documents.

The screenshot shows the IES Client v8.36: My IES interface. The title bar includes 'Help', 'Submit', 'Quit', 'Functions', and 'Commands'. The main content area is titled 'Object: Quick Rep'. It features several configuration sections:

- Object Key:** jobssubs-1
- Name:** Jobs Subs without Cost Type
- Source File:** jobssubs
- Heading:** (empty field)
- Options:**
 - Detail Suppress
 - Id Suppress
 - Double Space
 - Omit Final Totals
- Buttons:** Save, HTML Settings, Quit, Select DataNames, Re-select Column Order, Select Breaks, Select Totals, Select Sorts.
- Data Names List:**

	Data Names
1	JOBKEY : Jobcode
2	com-bf : Committed B/F
3	com-cur : Committed Current
4	com-ptd : Committed YTD
5	com-ltd : Committed LTD
6	SUBACN : Sub Acct Name
7	name : Name
8	act-bf : Actual B/F
9	act-cur : Actual Current
10	act-ptd : Actual YTD
11	act-ltd : Actual LTD
12	repgroup : Report Group
13	comact-bf : Accrual B/F
14	comact-cur : Accrual Current
15	comact-ptd : Accrual YTD
16	comact-ltd : Accrual LTD
- Breaks List:**

	Breaks
1	subacn
2	jobkey
- Totals List:**

	Totals	Accum To
1	com-bf	
2	com-cur	
3	com-ptd	
4	com-ltd	12
5	act-bf	
6	act-cur	
- Sort By List:**

	Sort By	Dend / Exp
1	jobkey	
2	SUBACN	

Slide 19

Slide notes: