

Slide 1

Slide notes: Setting up a new Recon Master is very easy.

The screenshot shows a web browser window titled 'IES Client v8.311 : My IES'. The browser's address bar is empty, and the menu bar includes 'Help', 'Submit', 'Quit', 'Functions', and 'Comments'. The page has a blue header with the text 'Create new Bank Recon Master'. Below the header, there is a text box for 'ReconMaster Key' and a note: 'The Key can be the same as the Ledger Account. If multiple Accounts will be linked, then use another key.' To the right of the 'ReconMaster Key' field is a text box with the instruction: 'Use a description that is suitable for identifying the Recon on a lookup,'. Below these fields are several other fields: 'Description', 'Type' (set to 'standard'), 'Currency' (set to 'USD'), 'Deposit Profile', '1st Recon Period', and 'Start All Scan At'. Below these fields is a section titled 'The 1st Recon Period is when this Bank Recon starts operating ...'. This section contains a table with the header 'Ledger Accounts on this Recon' and one row with the value '1'. To the right of the table is a vertical scrollbar. At the bottom of the form is a 'Create' button. A note at the bottom of the page states: 'You must connect at least 1 Ledger (Bank) Account of type "L" to this Recon Master.'

Create new Bank Recon Master

The Key can be the same as the Ledger Account. If multiple Accounts will be linked, then use another key.

ReconMaster Key [ ]

Description [ ] Use a description that is suitable for identifying the Recon on a lookup,

Type: standard

Currency: USD

Deposit Profile [ ]

1st Recon Period [ ]

Start All Scan At [ ]

The 1st Recon Period is when this Bank Recon starts operating ...

Ledger Accounts on this Recon
1

[Create](#)

You must connect at least 1 Ledger (Bank) Account of type "L" to this Recon Master.

## Slide 2

Slide notes: A Recon Master is always linked to 1 or more GL Accounts, and we just have to select the Account from the lookup.

IES Client v8.31 | My IES

Help | Submit | Quit | Functions | Commands

Create new Bank Recon Master

The Key can be the same as the Ledger Account. If multiple Accounts will be linked, then use another key.

ReconMaster Key

Description

Type: standard

Currency: USD, \$

Deposit Profit:

1st Recon Period

Start All Recon At

The 1st Recon Period is when this Bank Recon starts spending ...

Ledger Accounts on this Recon

1

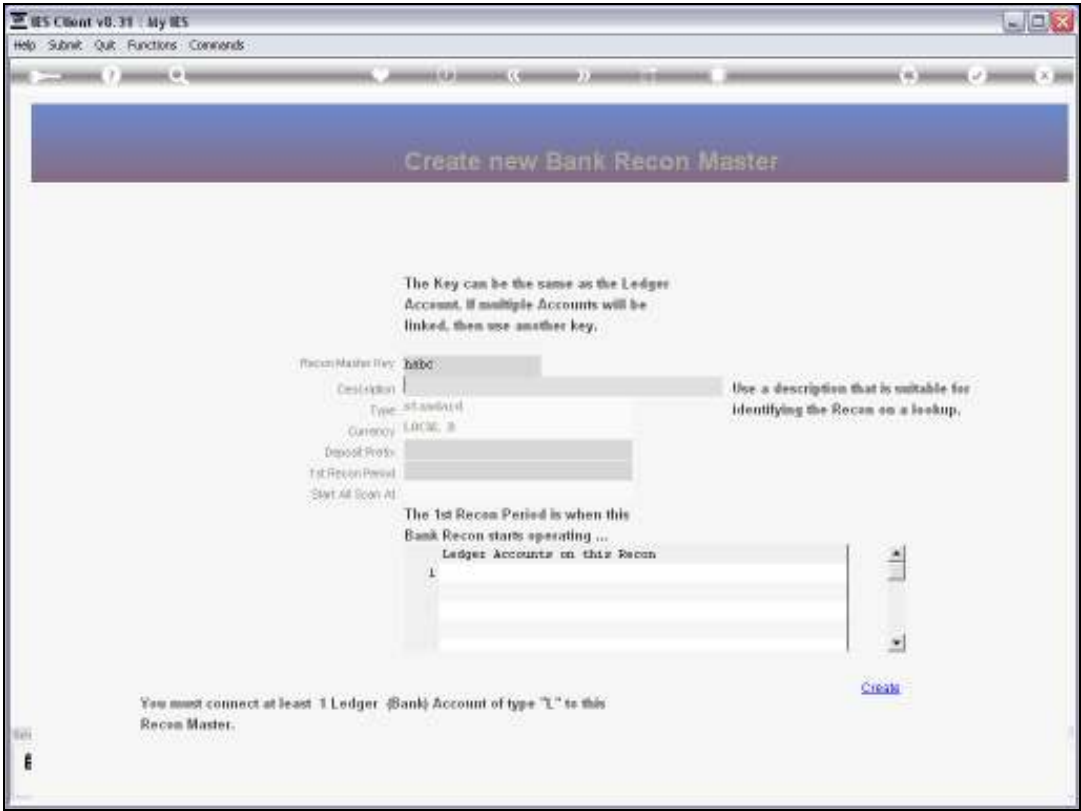
Use a description that is suitable for identifying the Recon on a lookup.

Create

You must connect at least 1 Ledger (Bank) Account of type "L" to this Recon Master.

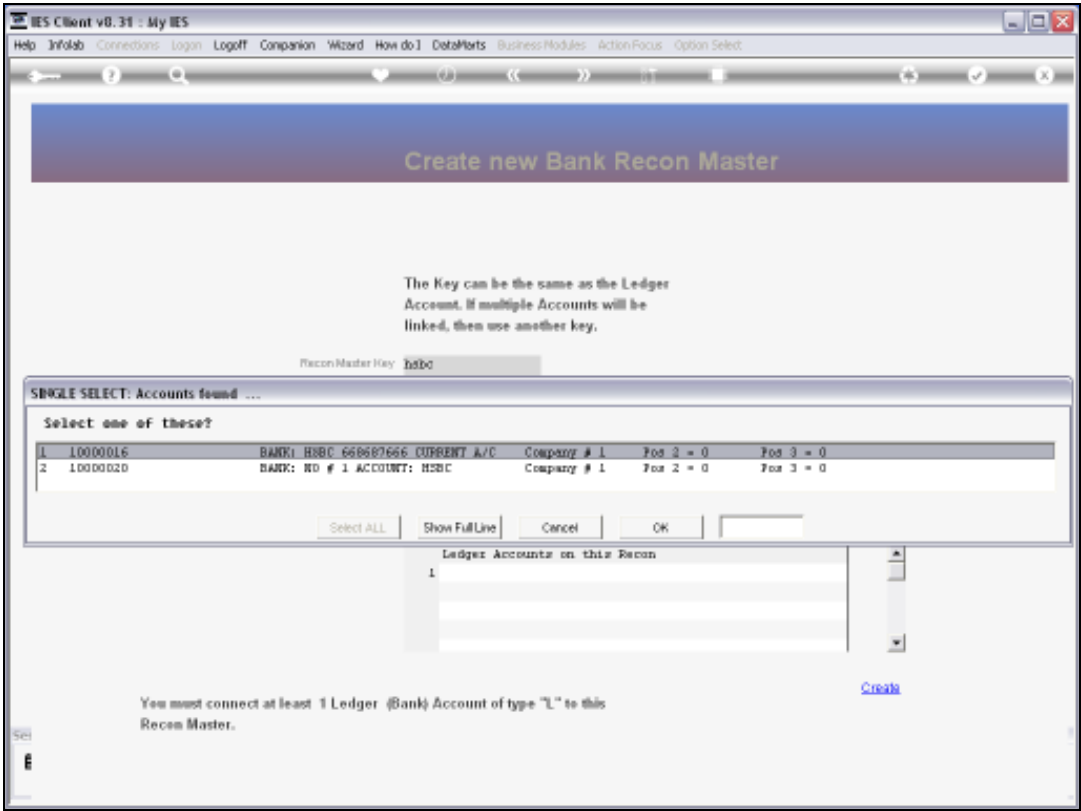
Slide 3

Slide notes:

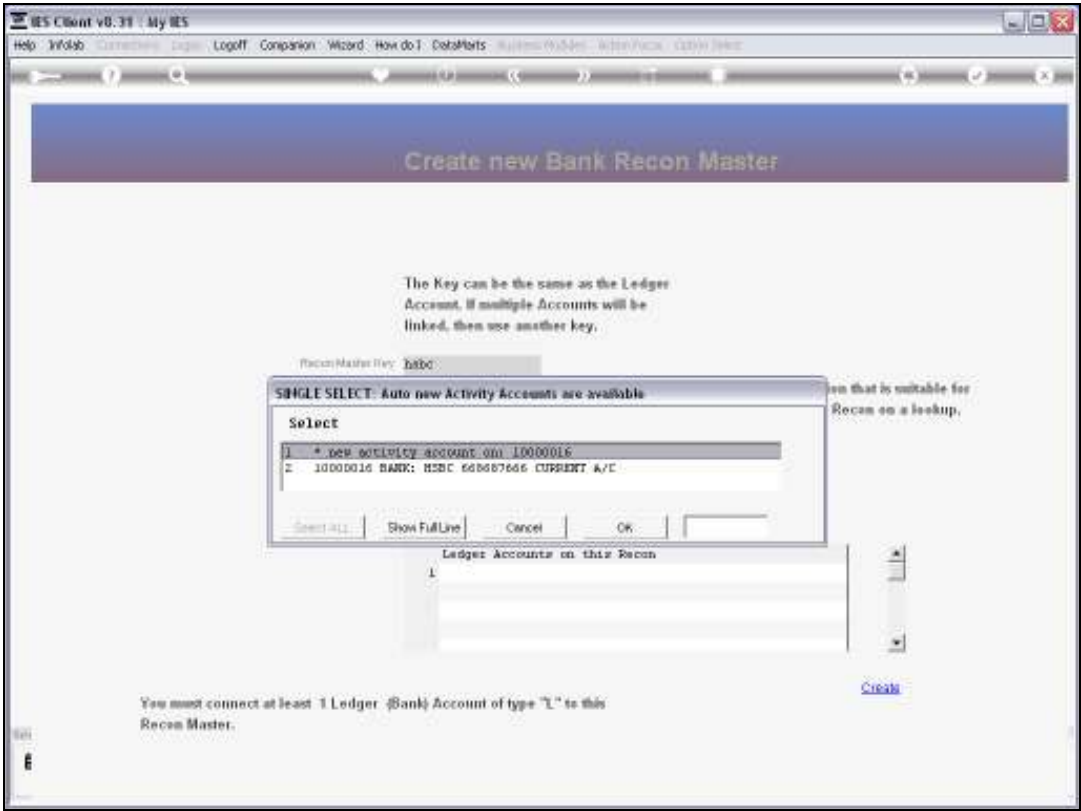


Slide 4

Slide notes:

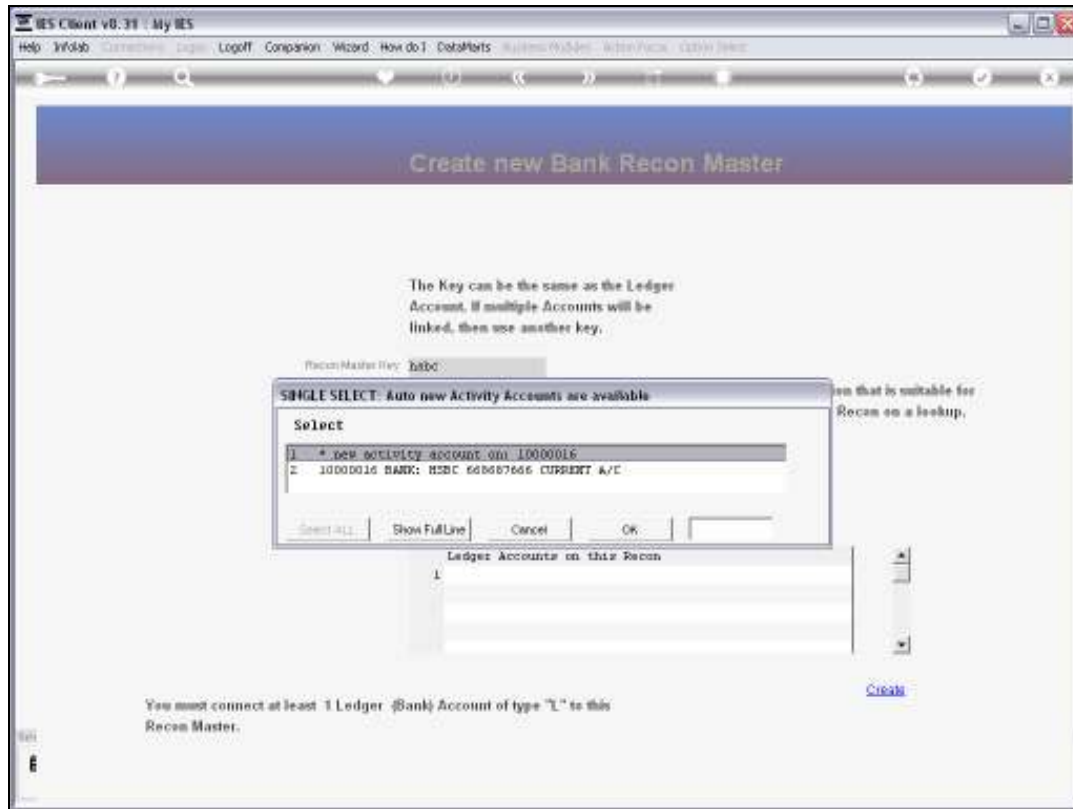


Slide 5  
Slide notes:



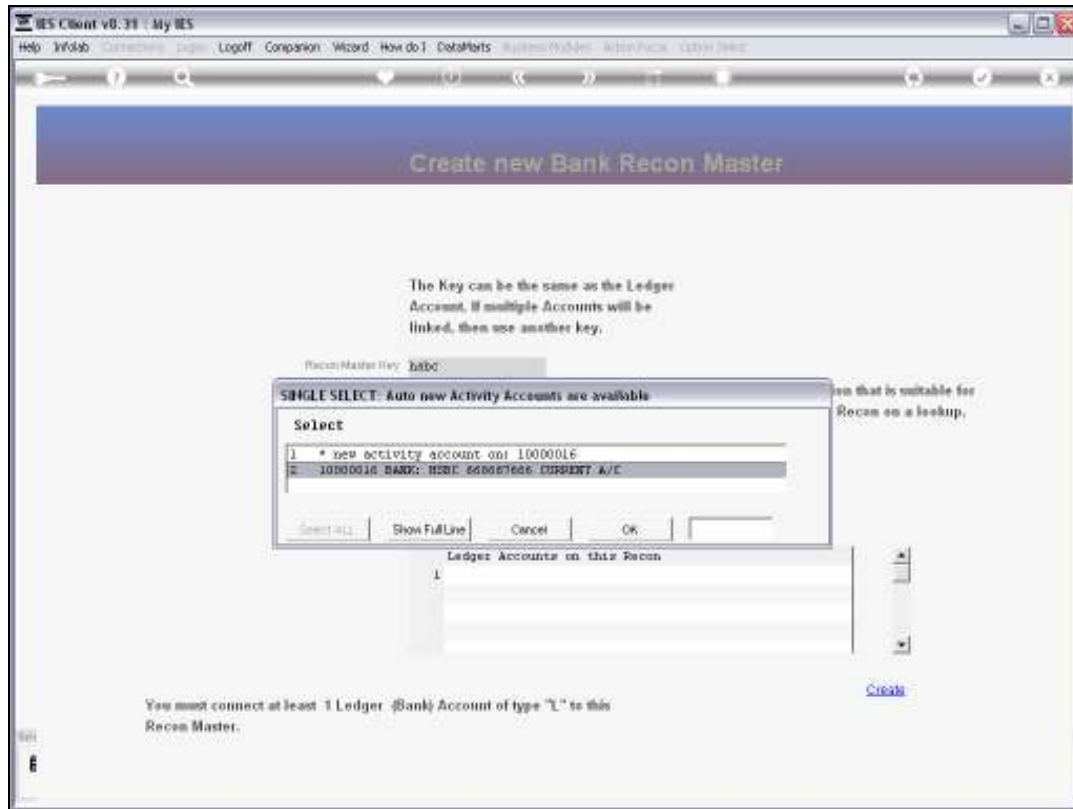
Slide 6

Slide notes:



Slide 7

Slide notes:



Slide 8

Slide notes:

The screenshot shows a web browser window titled 'IES Client v8.31 : My IES'. The browser's address bar is empty, and the page has a blue header with the text 'Create new Bank Recon Master'. Below the header, there is a text box with the following instructions: 'The Key can be the same as the Ledger Account. If multiple Accounts will be linked, then use another key.' The form contains several input fields: 'ReconMaster Key' with the value '10000016', 'Description' with the value 'BANK: HSBC 66667666 CURRENT A/C', 'Type' with the value 'VI 2004', 'Currency' with the value 'A\$', 'Deposit Profile' with the value 'Bsr: 2011 (p: 123)', '1st Recon Period' with the value 'Bsr: 2011 (p: 123)', and 'Start All Scan At' with the value 'Bsr: 2011 (p: 123)'. To the right of the 'Description' field, there is a note: 'Use a description that is suitable for identifying the Recon on a lookup,'. Below the input fields, there is a section titled 'The 1st Recon Period is when this Bank Recon starts operating ...'. This section contains a list of 'Ledger Accounts on this Recon' with one entry: '1 10000016 BANK: HSBC 66667666 CURRENT A/C'. At the bottom of the form, there is a 'Create' button. A footer message states: 'You must connect at least 1 Ledger (Bank) Account of type "L" to this Recon Master.'

Create new Bank Recon Master

The Key can be the same as the Ledger Account. If multiple Accounts will be linked, then use another key.

ReconMaster Key: 10000016

Description: BANK: HSBC 66667666 CURRENT A/C Use a description that is suitable for identifying the Recon on a lookup,

Type: VI 2004

Currency: A\$

Deposit Profile: Bsr: 2011 (p: 123)

1st Recon Period: Bsr: 2011 (p: 123)

Start All Scan At: Bsr: 2011 (p: 123)

The 1st Recon Period is when this Bank Recon starts operating ...

Ledger Accounts on this Recon

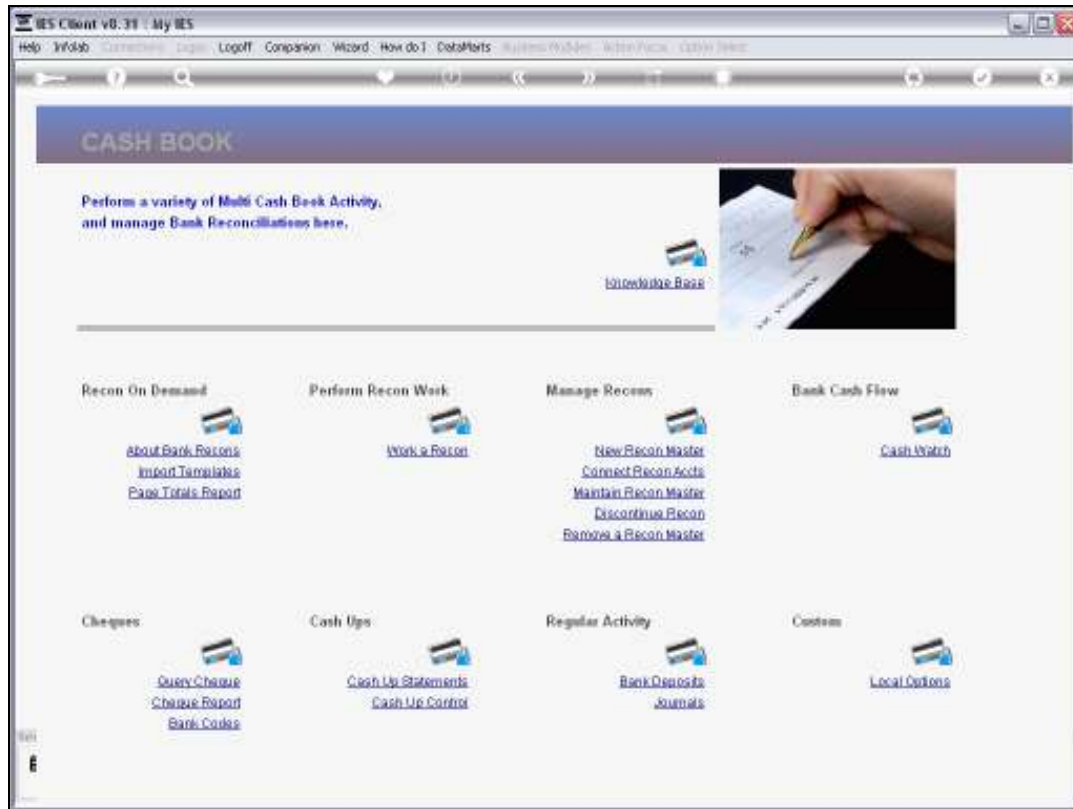
1 10000016 BANK: HSBC 66667666 CURRENT A/C

Create

You must connect at least 1 Ledger (Bank) Account of type "L" to this Recon Master.

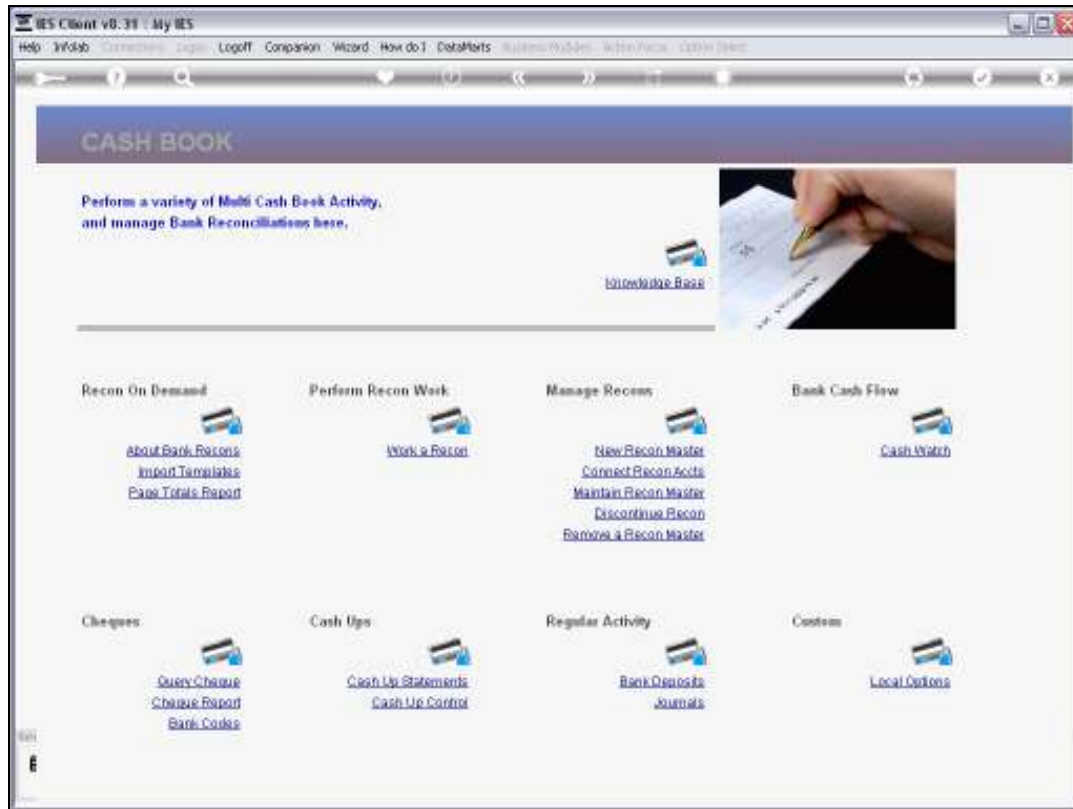
Slide 9

Slide notes: When we select 'create' then the Recon Master is created.



Slide 10

Slide notes:



Slide 11

Slide notes: