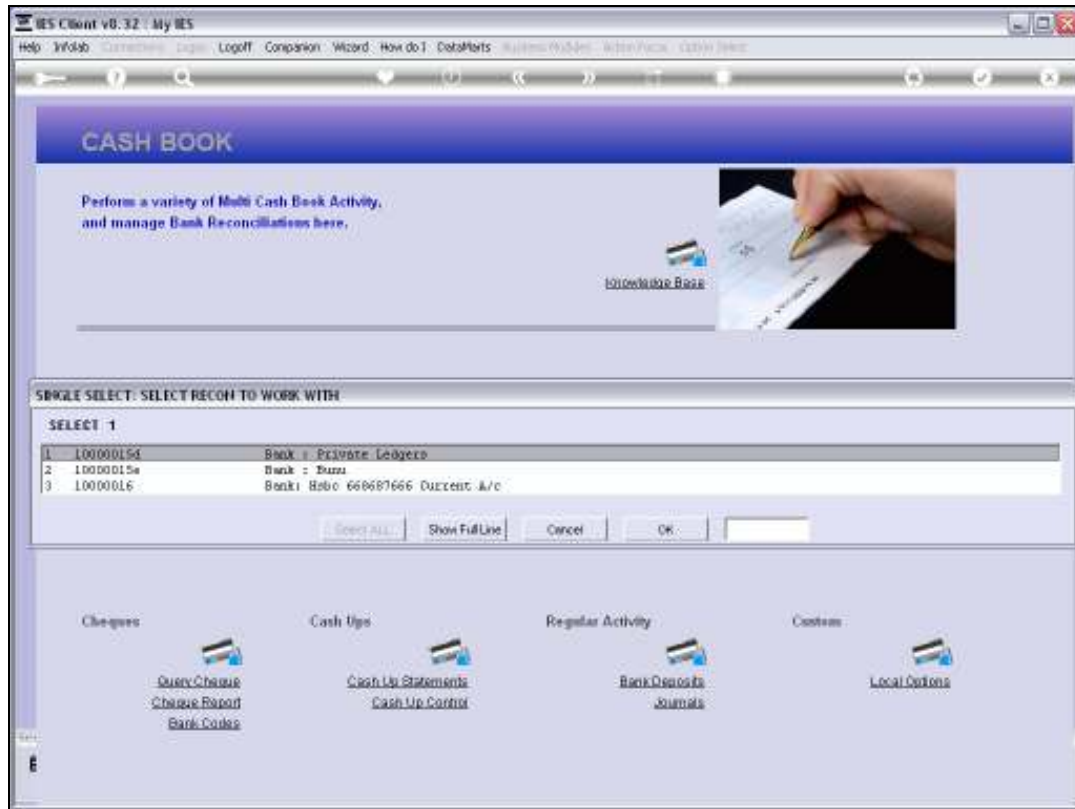


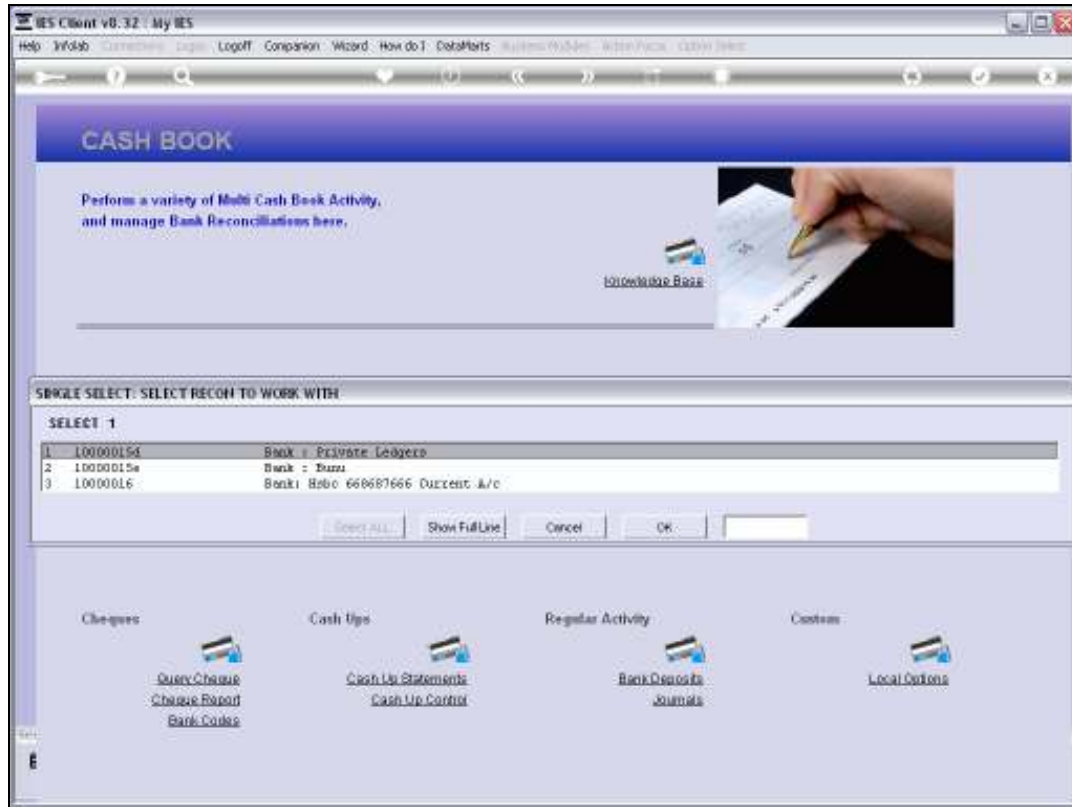
Slide 1

Slide notes: To work with a Recon, we select 'Work a Recon'.



Slide 2

Slide notes: Then we choose the Recon from the available list of Bank Recon Masters.



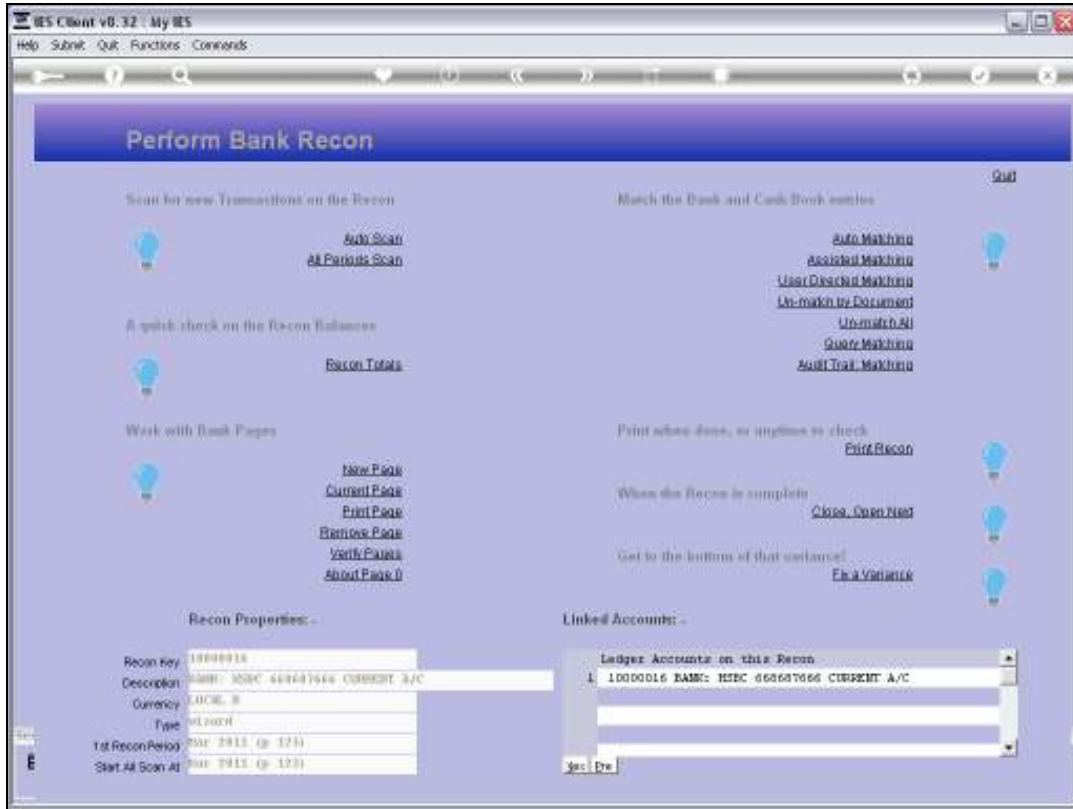
Slide 3

Slide notes:



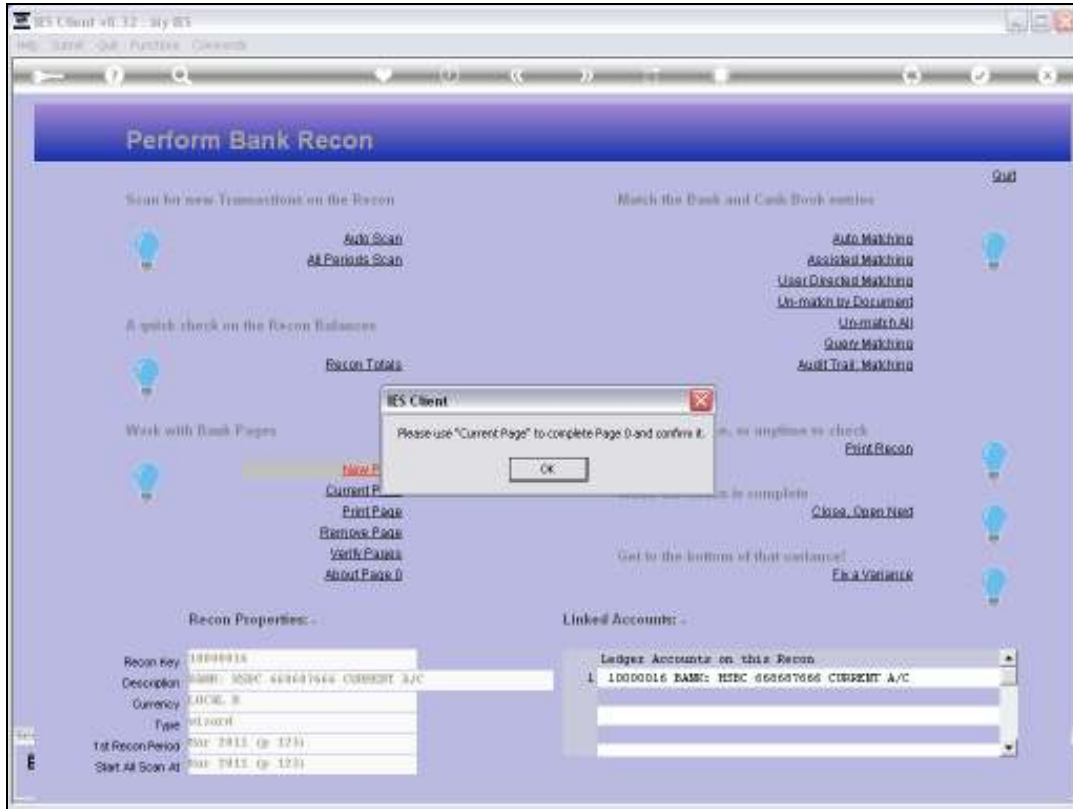
Slide 4

Slide notes:



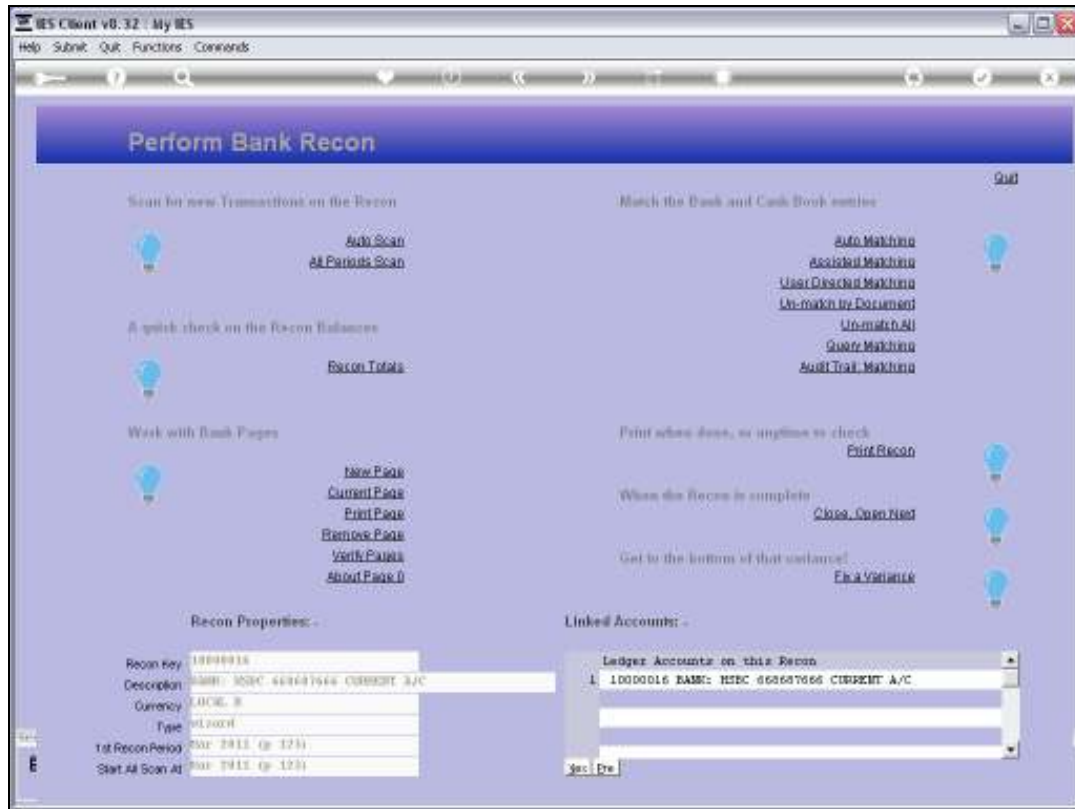
Slide 5

Slide notes: On a new Bank Recon Master, we should choose 'New Page' for the system to create Page Zero for us.



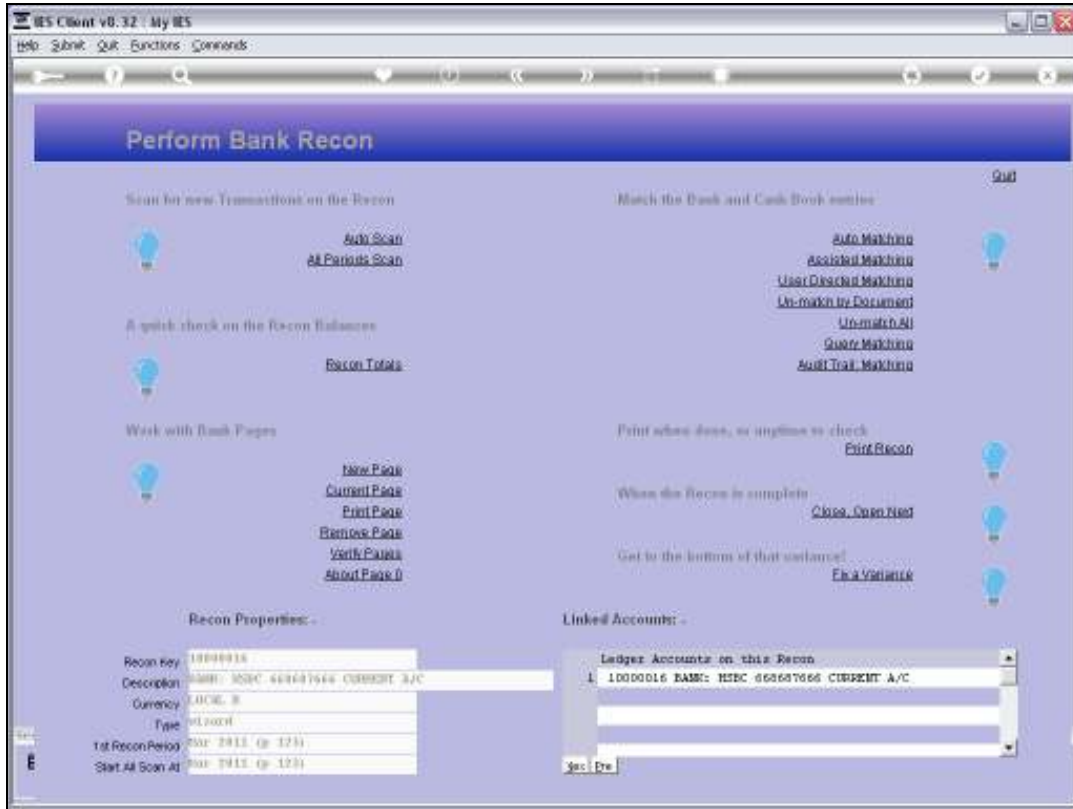
Slide 6

Slide notes: The system then senses that we have never used Bank Pages on this Recon Master before, and that a Page Zero is required first. Therefore, the system creates a blank Page Zero, and advises that we may use "Current Page" to complete Page Zero before confirming it.



Slide 7

Slide notes:



Slide 8

Slide notes: