



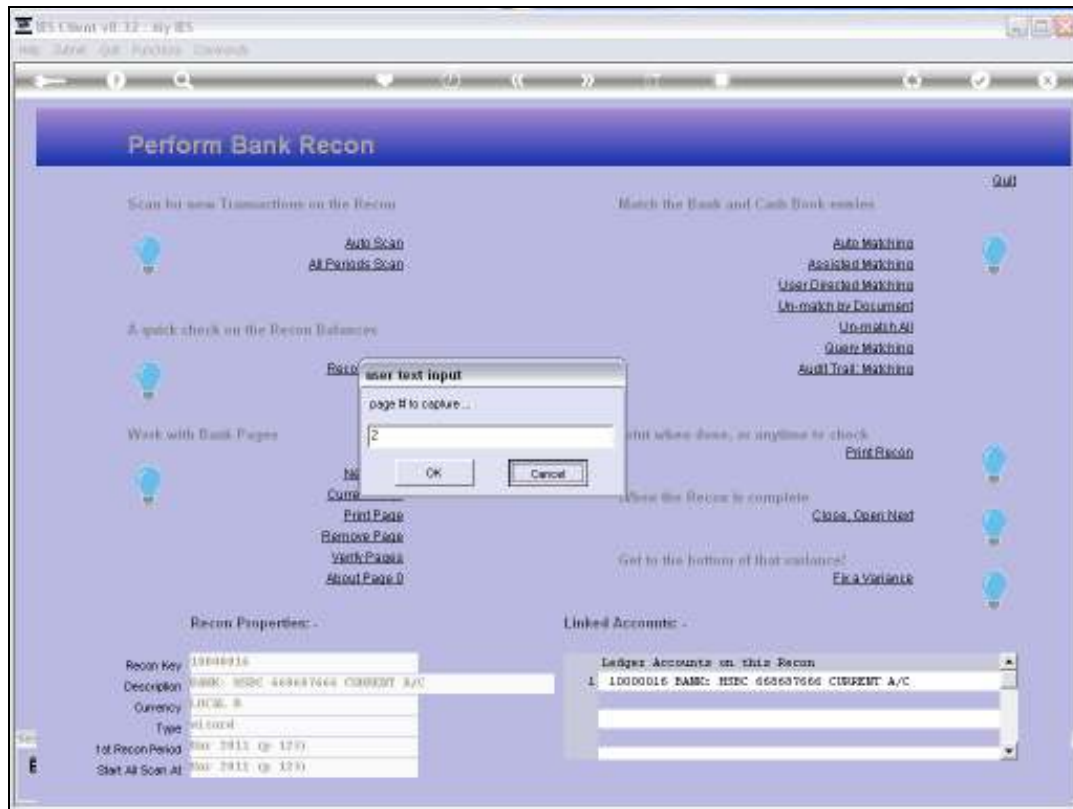
Slide 1

Slide notes: To open Bank Pages that we want to work with, we use either 'New Page' or 'Current Page'.



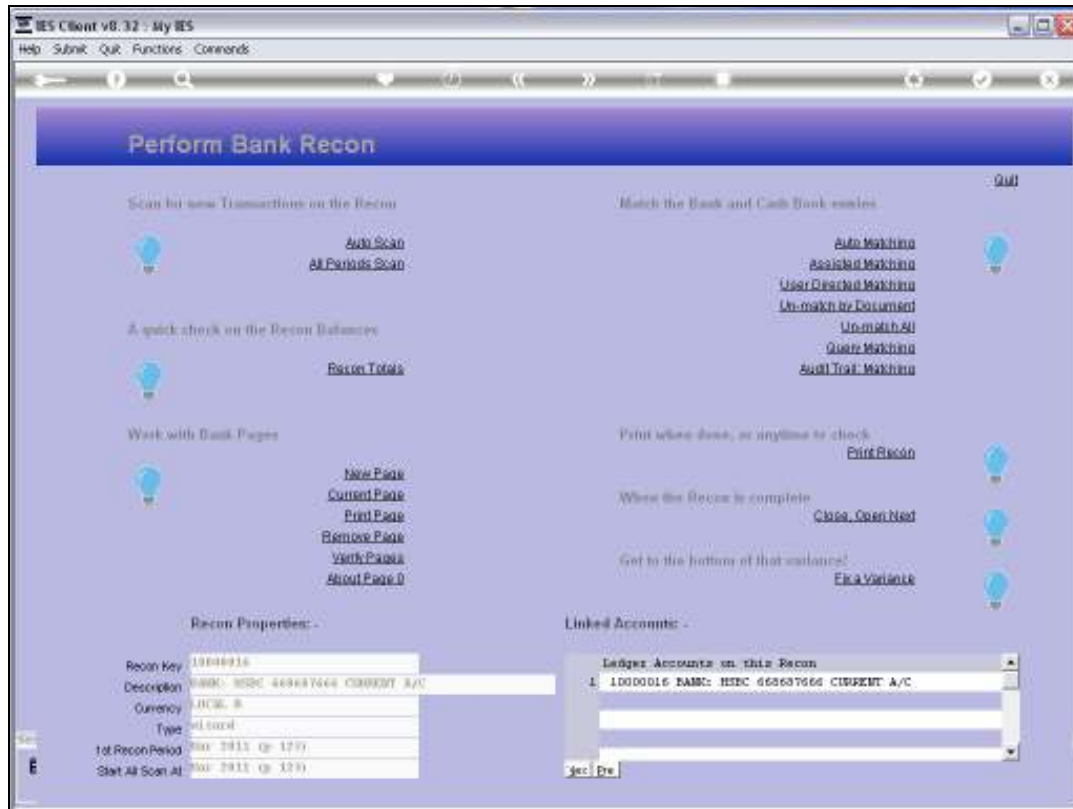
Slide 2

Slide notes: For a new Page that has not been entered before, we choose 'New Page'.



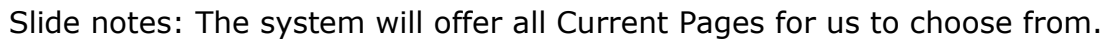
### Slide 3

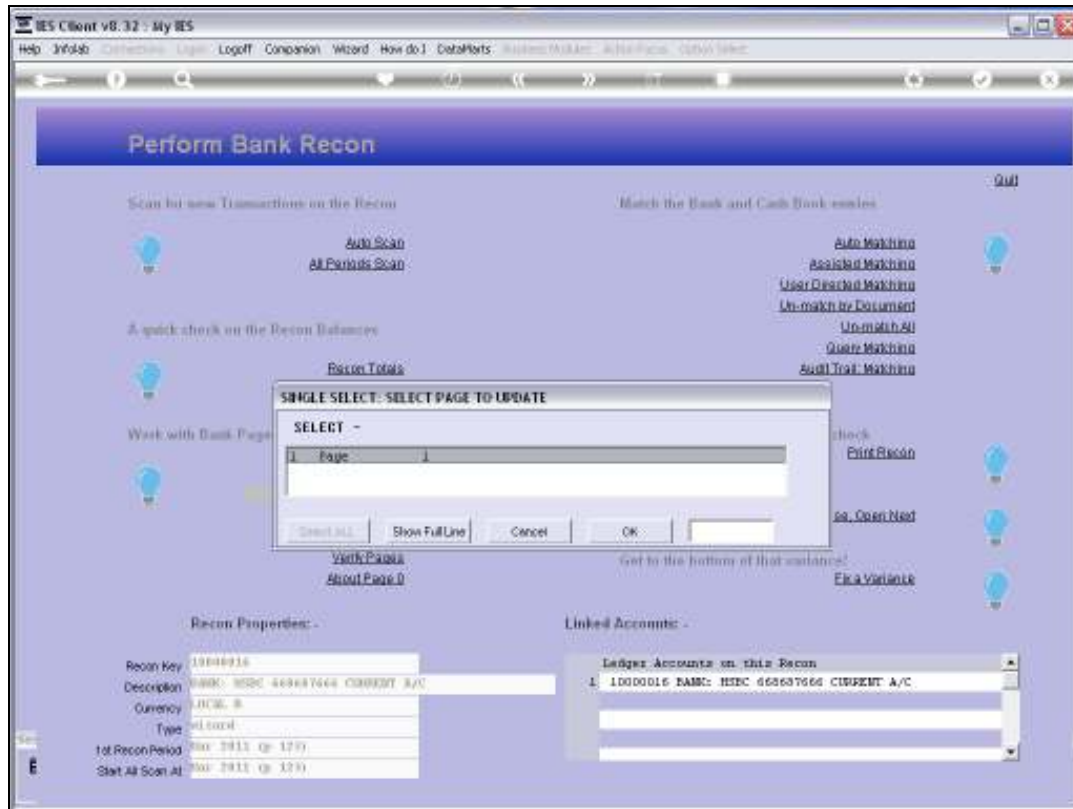
Slide notes: The system will offer the next logical number following the most recent Page Number we have had. If we want to skip to a new Number that is the same as the actual number on the Bank Page, then we can.



Slide 4

Slide notes: For a Page that already exists for this Recon, we can choose 'Current Page'.





Slide 6

Slide notes:

