

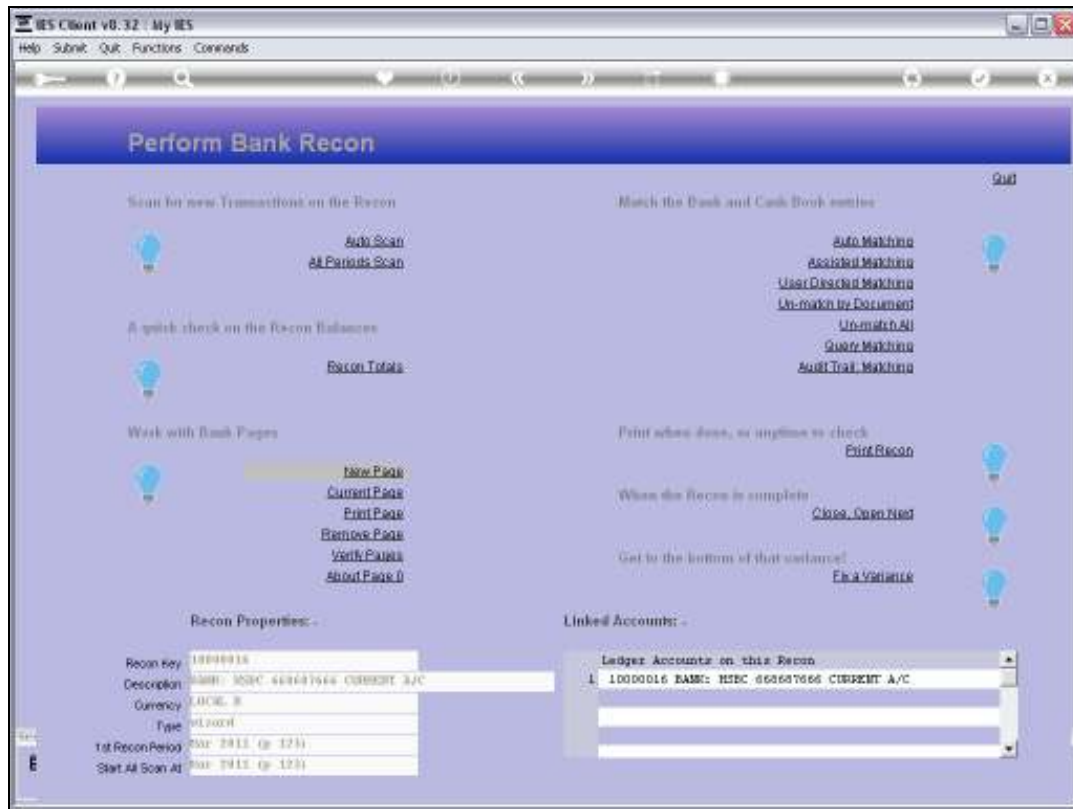
Slide 1

Slide notes: When we wish to capture a new Bank Page, we use 'New Page'.



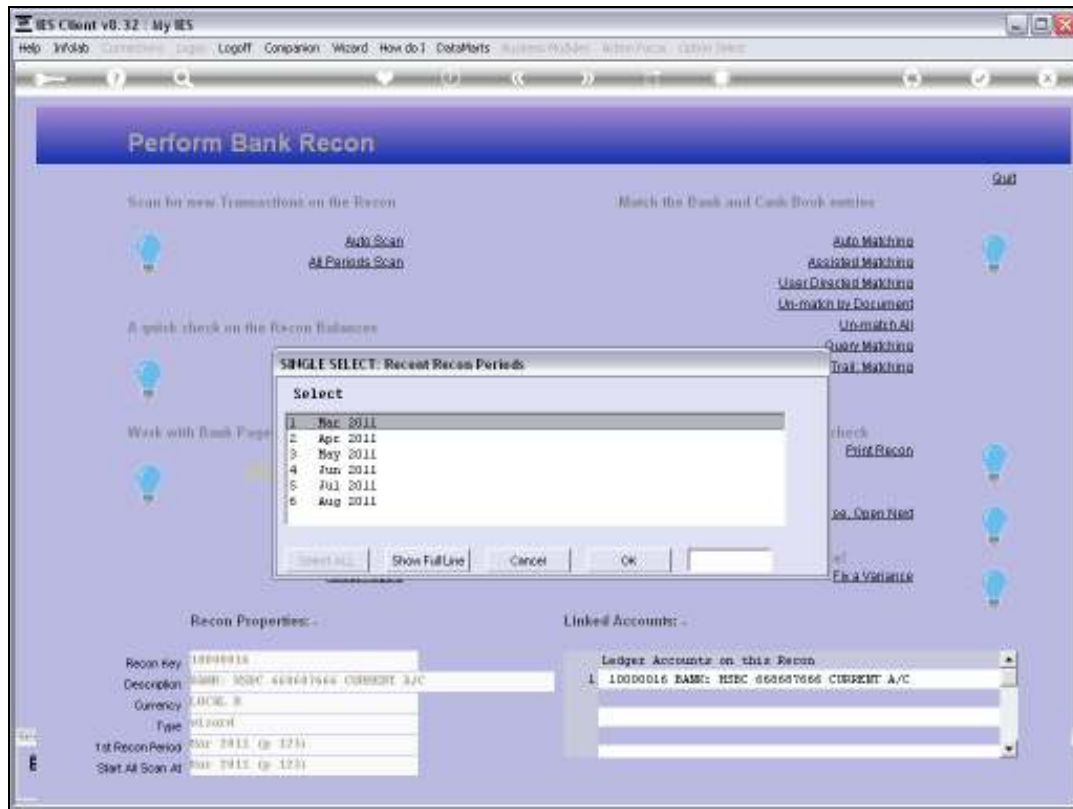
Slide 2

Slide notes:



Slide 3

Slide notes:



Slide 4

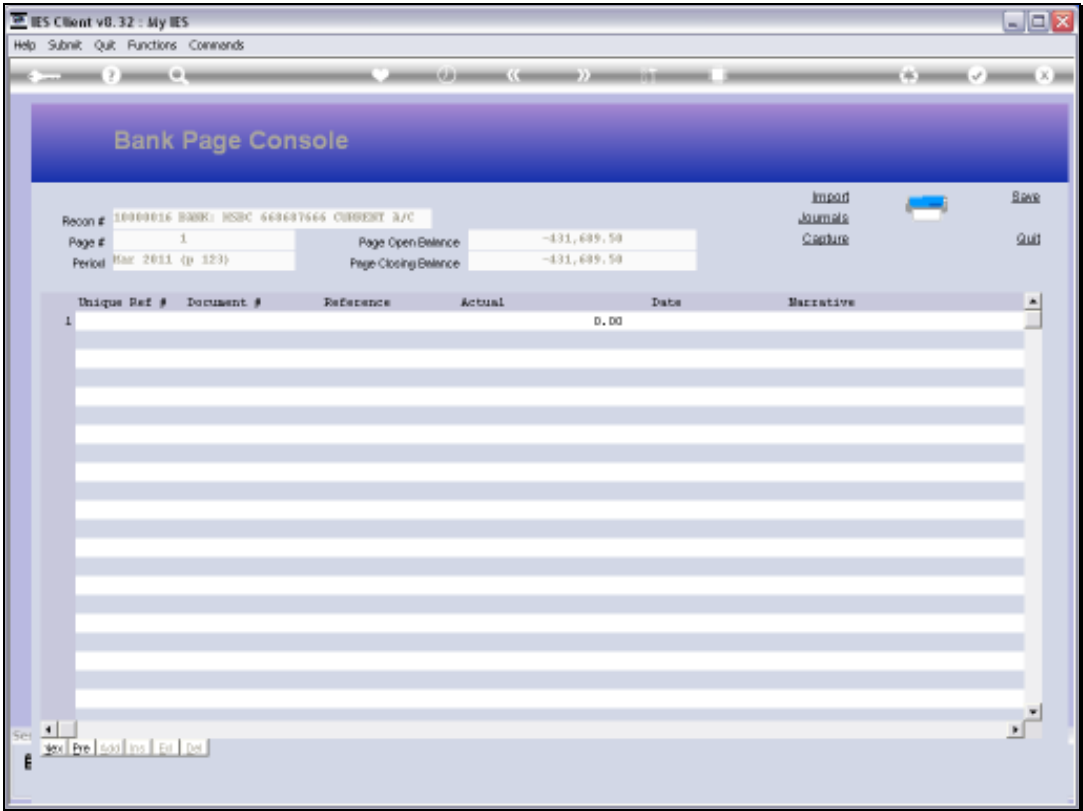
Slide notes: The current active Recon Period is always listed at the top, and this is the usual selection, but it is also possible to capture Bank Pages for future Periods if these Pages are already available.



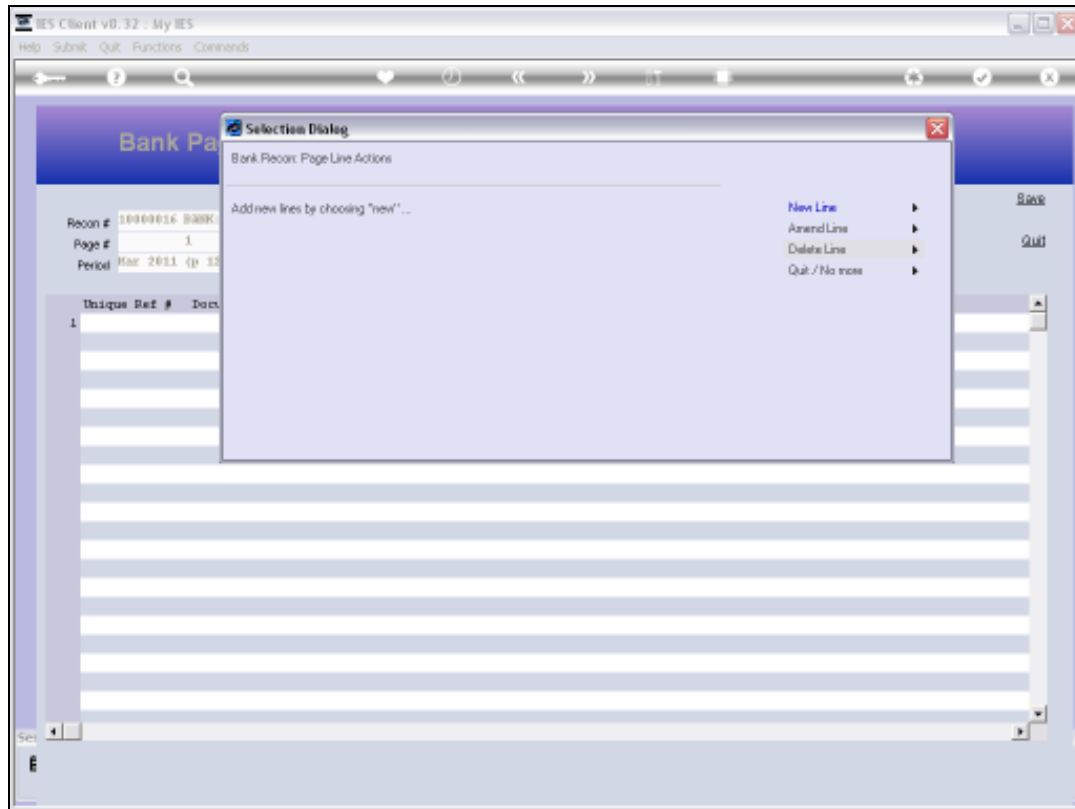
Slide 5
Slide notes:



Page 6 of 47



Slide 7
Slide notes:



Slide 8

Slide notes: The Capture options are used when we do not want to or cannot for some reason use the Import option, or to make a few changes to a Page. The 'New Line' option gives us the opportunity to capture new Page Line entries.

IES Client v8.32 : My IES

Help Submit Quit Functions Commands

Cash Book

Bank Page Item Line

System Key	1580400675
Document #	
Reference	
Date	08/04/2011
Actual	
Narrative	
Insert @ Line	1

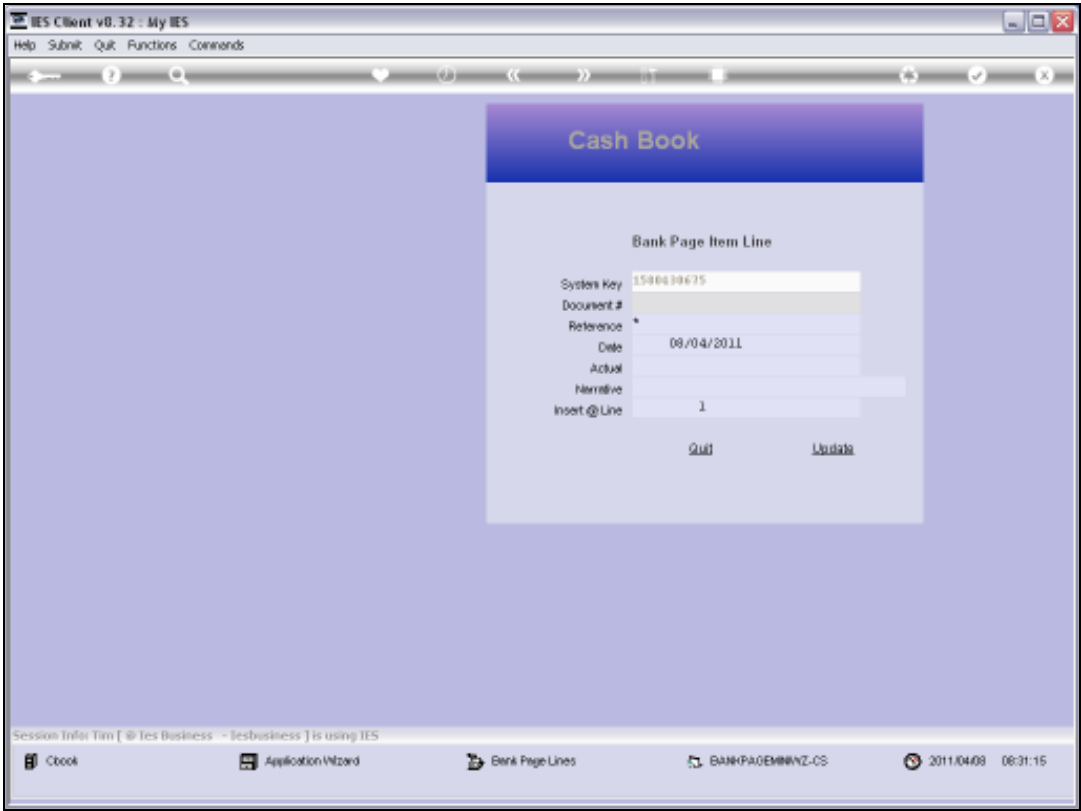
[Quit](#) [Update](#)

Session Info: Tim [@ Tes Business - tesbusiness] is using IES

Cbook Application Wizard Bank Page Lines BANKPAGEMAINZ-CS 2011/04/08 08:31:14

Slide 9

Slide notes: The Document is always stated on the Bank Page, and is an important element in the matching process.



Slide 10
Slide notes:

IES Client v8.32 : My IES

Help Submit Quit Functions Commands

Cash Book

Bank Page Item Line

System Key	1580600675
Document #	2117
Reference	
Date	08/04/2011
Actual	
Narrative	
Insert @ Line	1

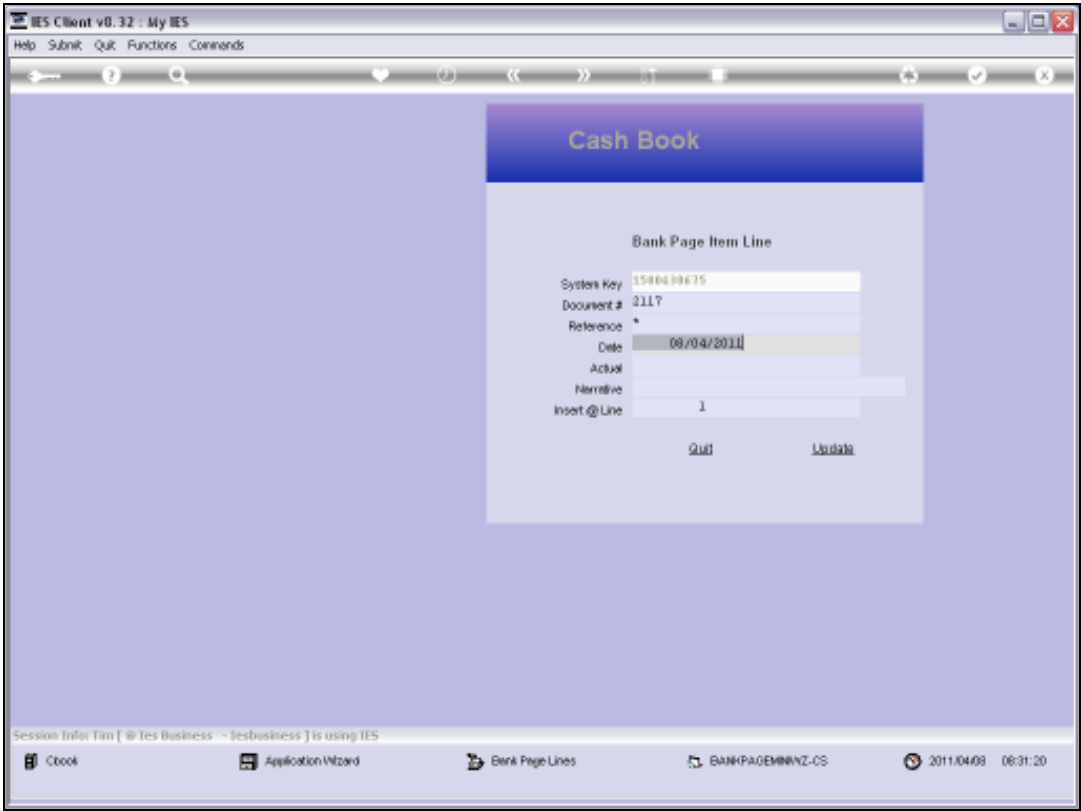
[Quit](#) [Update](#)

Session Info: Tim [@ Tes Business - tesbusiness] is using IES

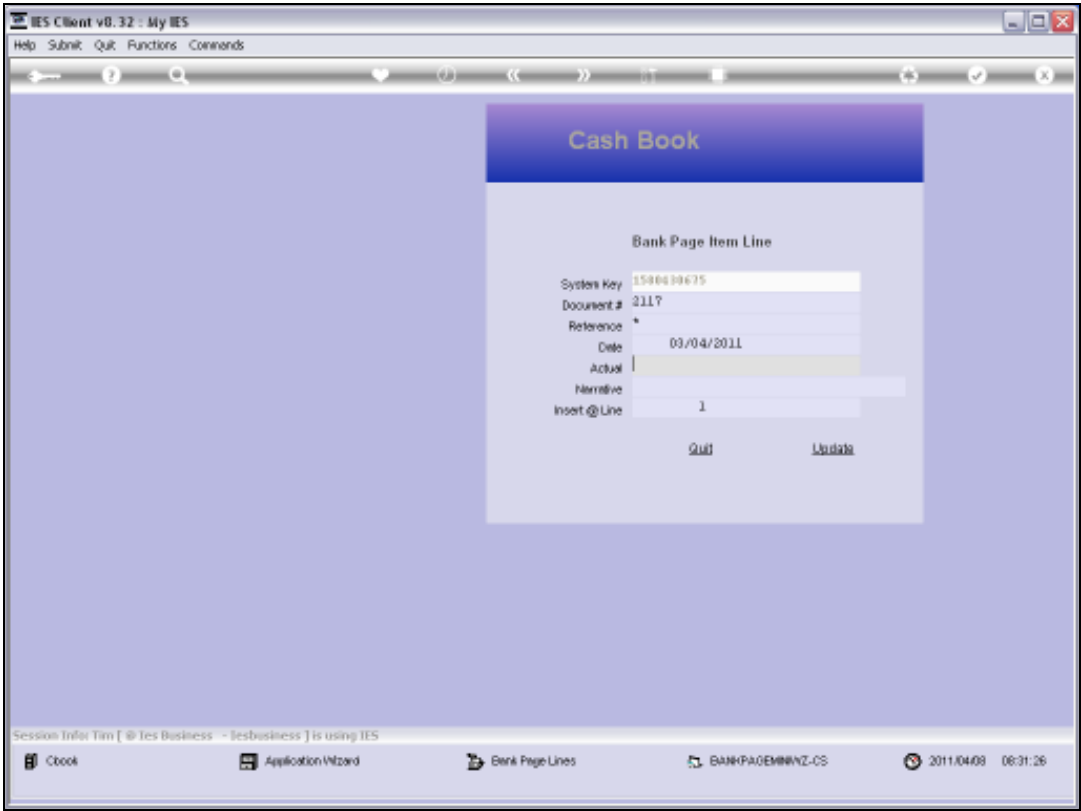
Cbook Application Wizard Bank Page Lines BANKPAGEMINZ-CS 2011/04/08 08:31:19

Slide 11

Slide notes: The Reference defaults to a standard value, and we would usually only change this in the case of a Customer Deposit entry, in which case the system will be able to process the reference as a Debtor Account Code and generate the Receipt Journal automatically.

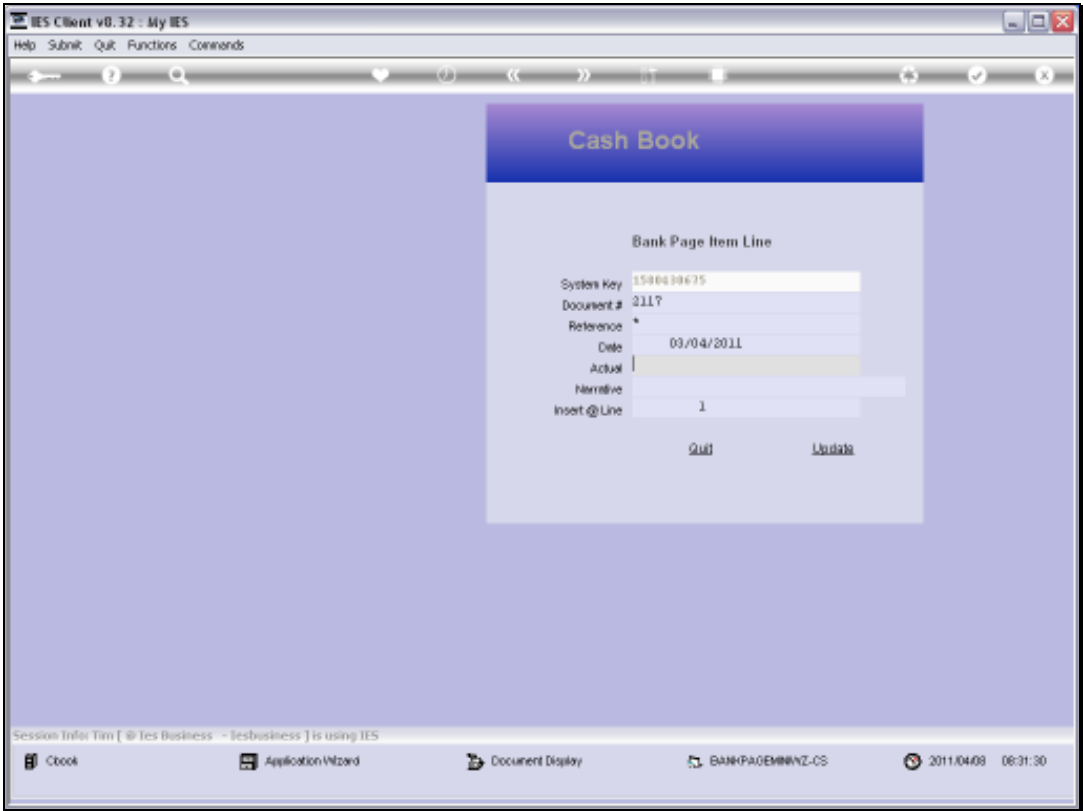


Slide 12
Slide notes:



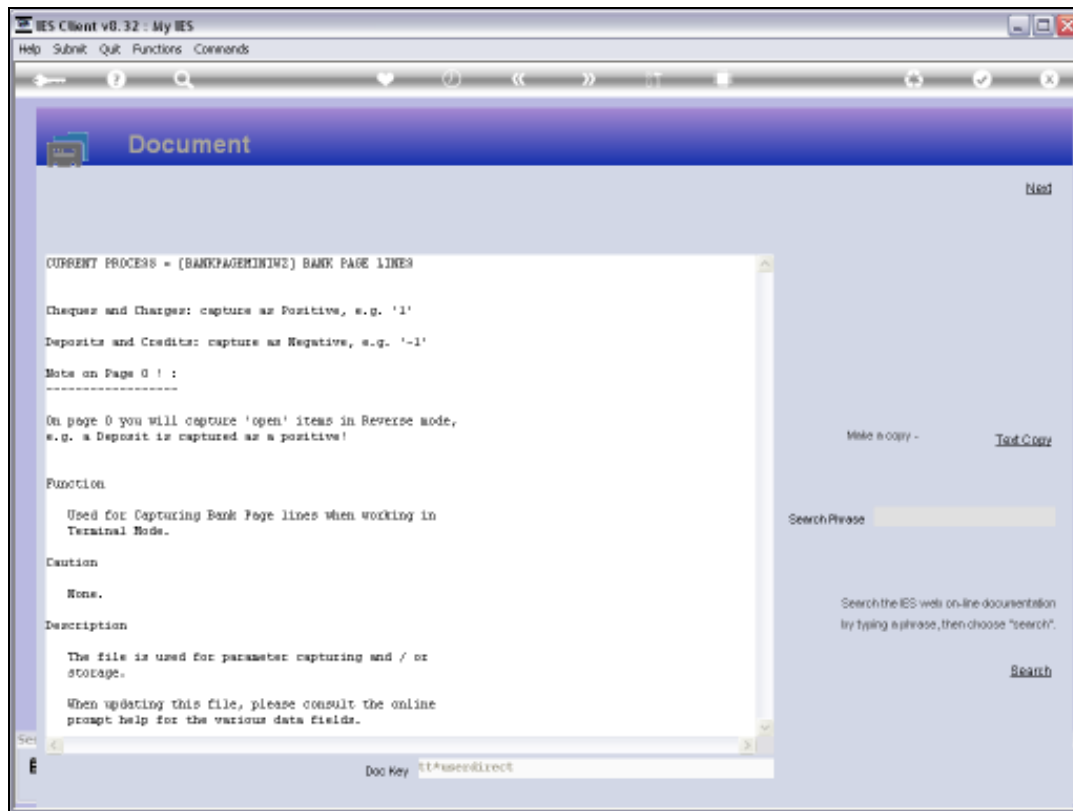
Slide 13

Slide notes:



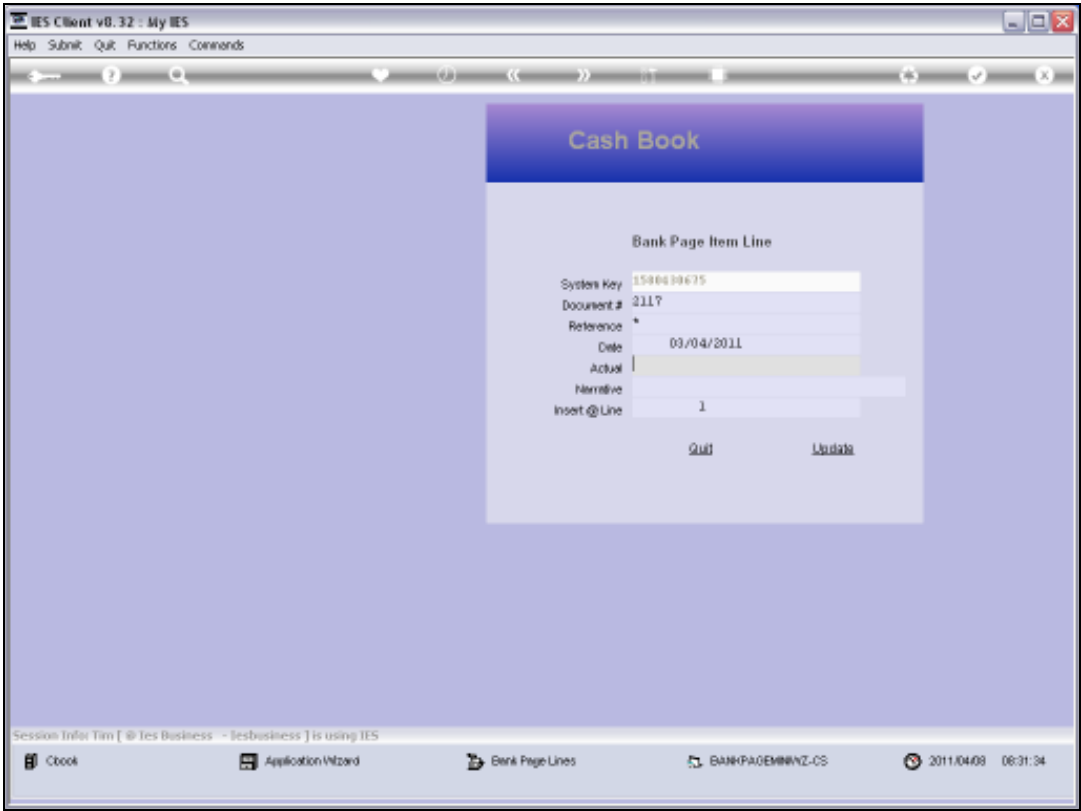
Slide 14

Slide notes:



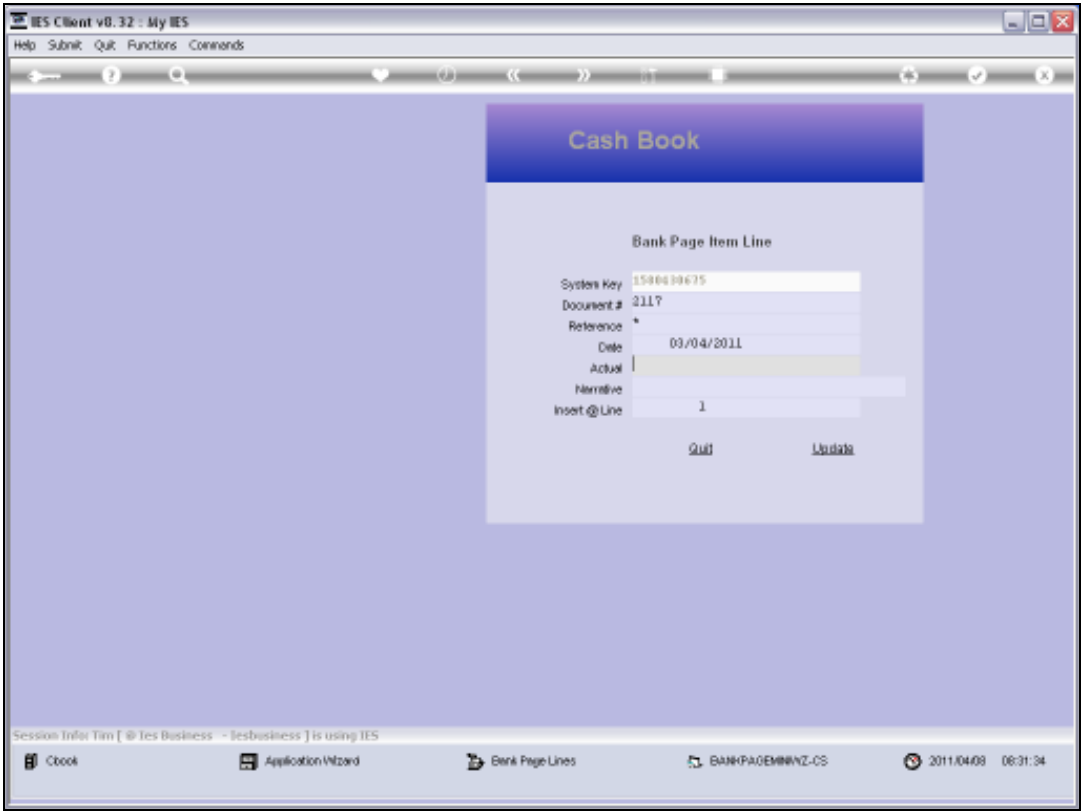
Slide 15

Slide notes: When we capture Amounts for Bank Page Line entries, we always capture Cheques and Charges as positive values, and Deposits as negative values.



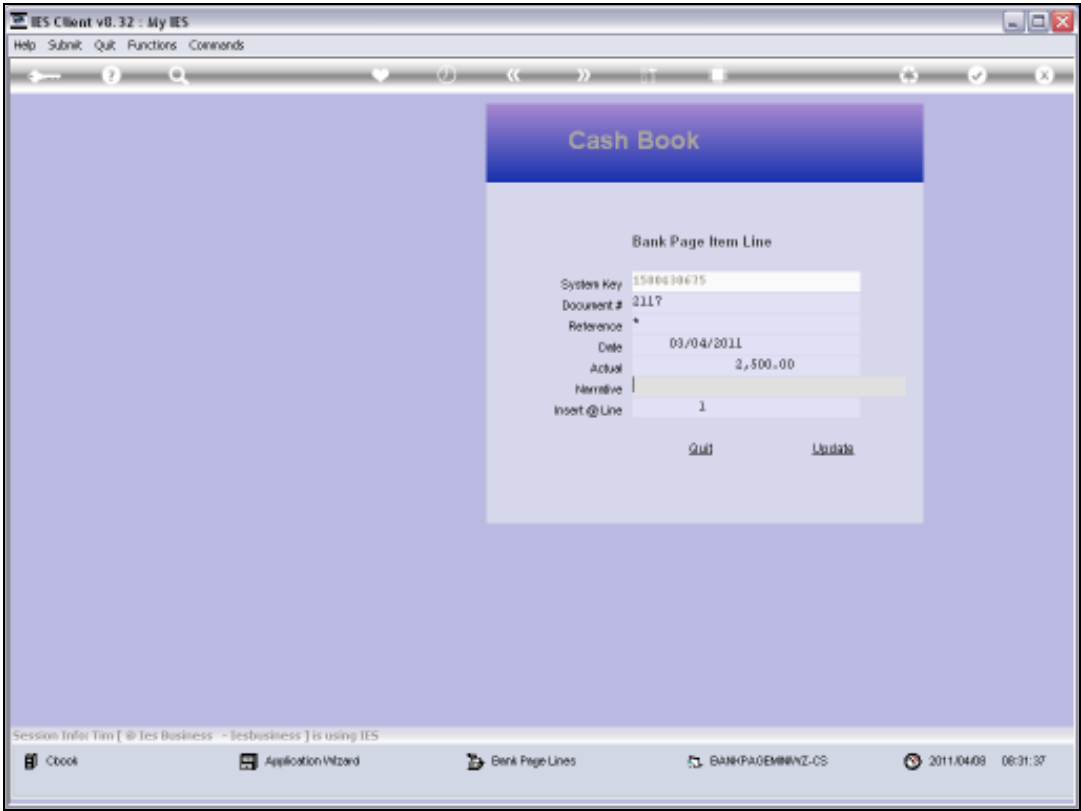
Slide 16

Slide notes:

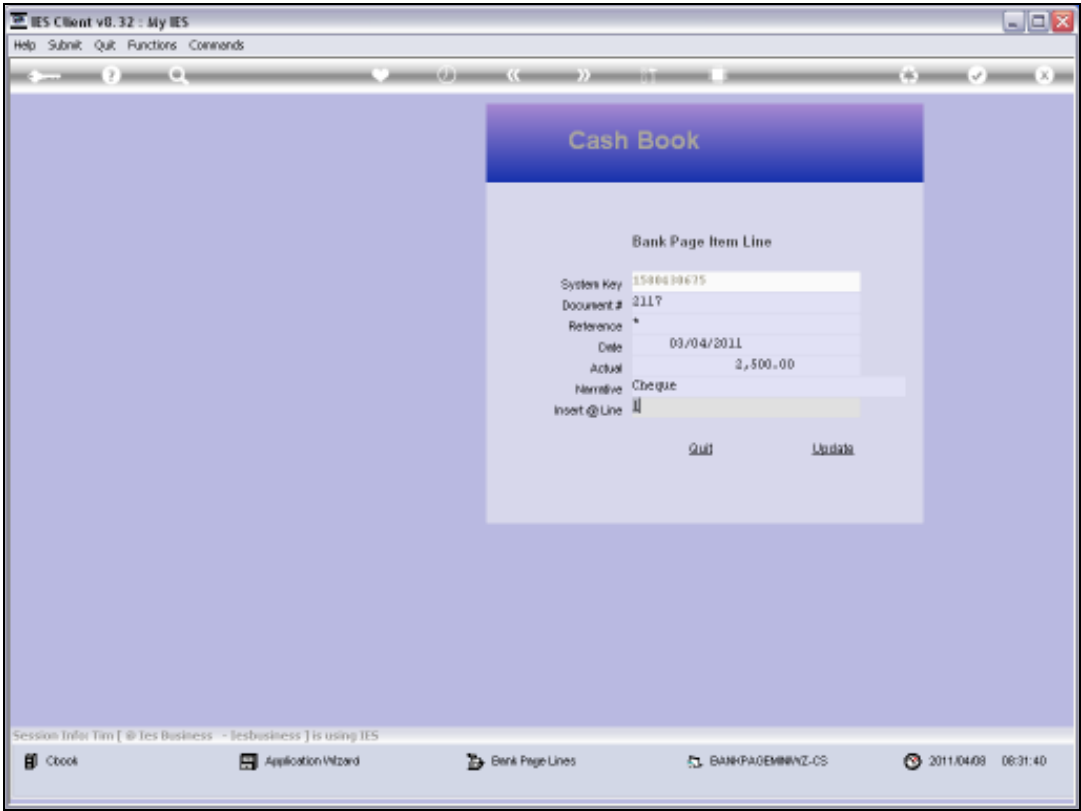


Slide 17

Slide notes:

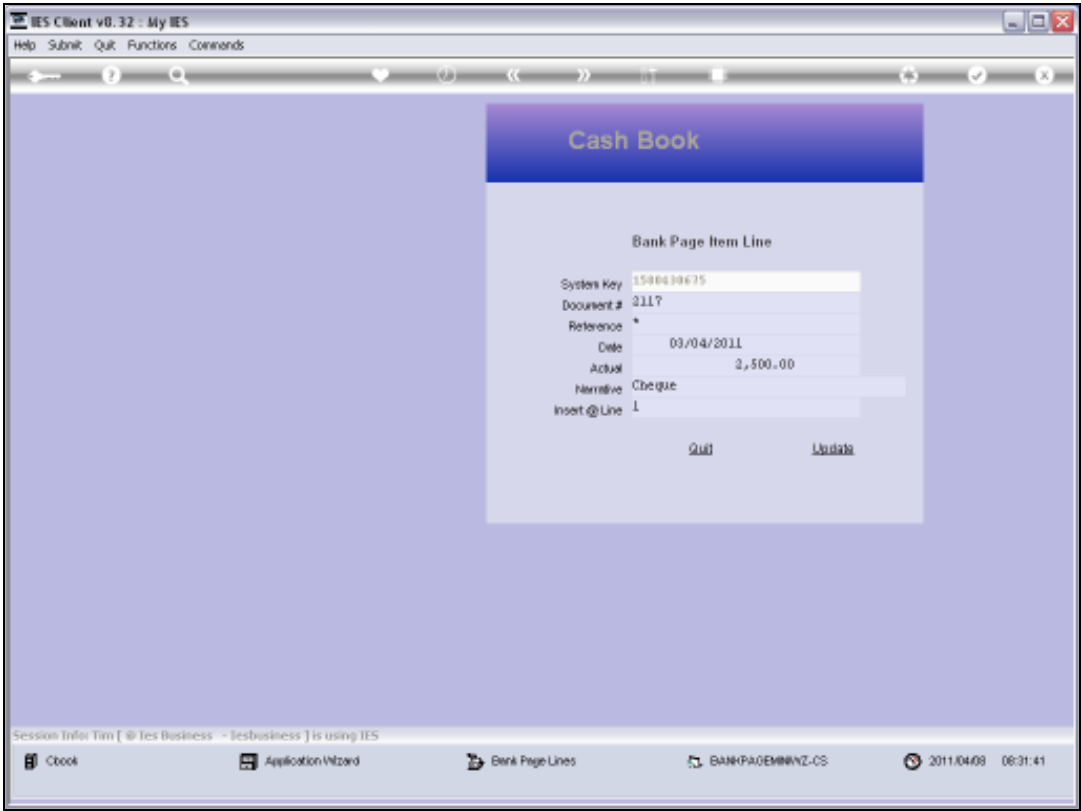


Slide 18
Slide notes:



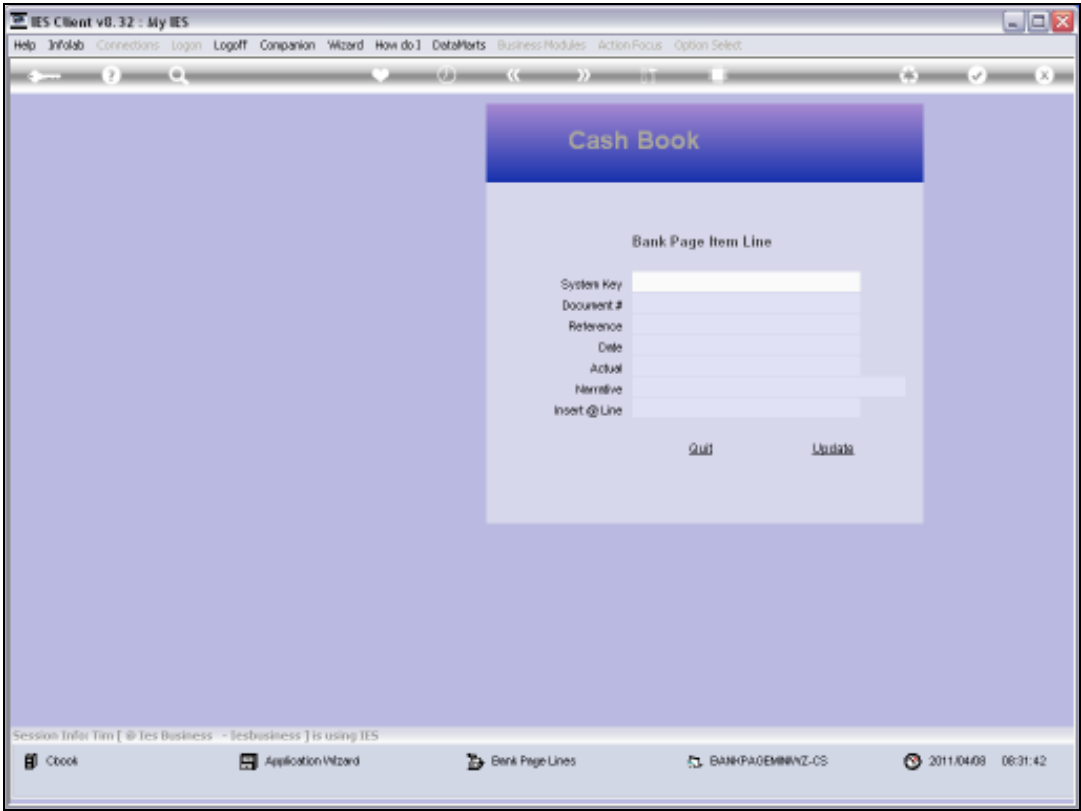
Slide 19

Slide notes:



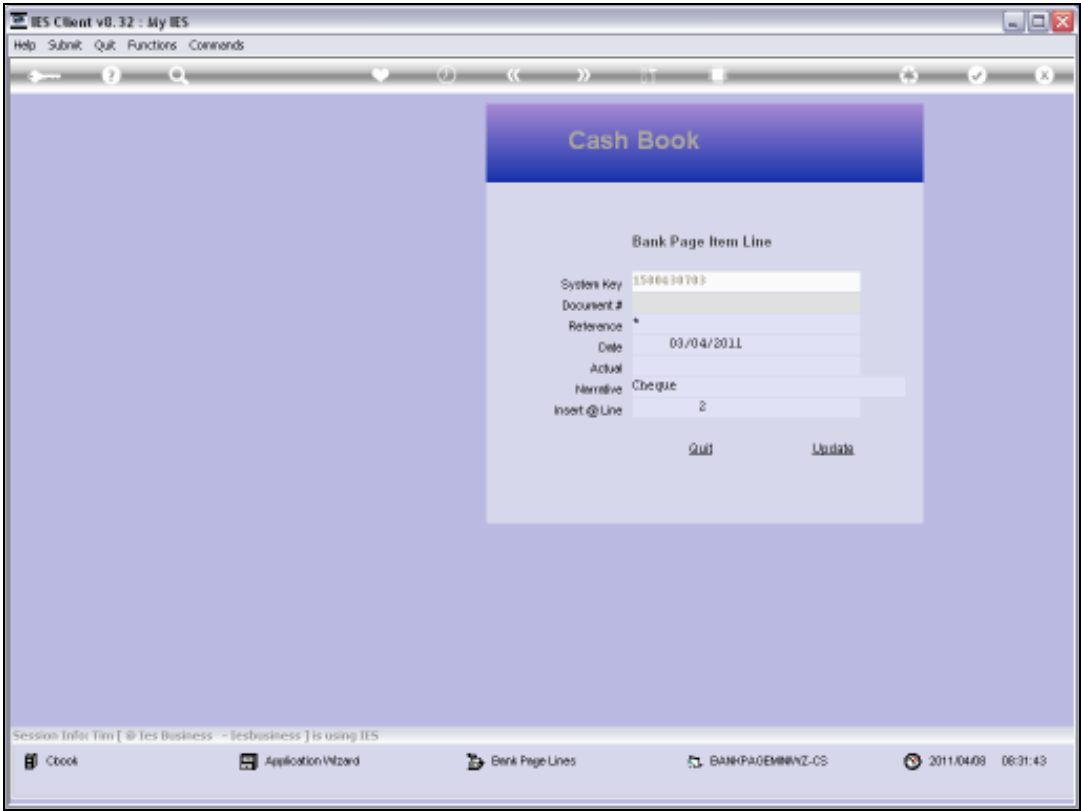
Slide 20

Slide notes:



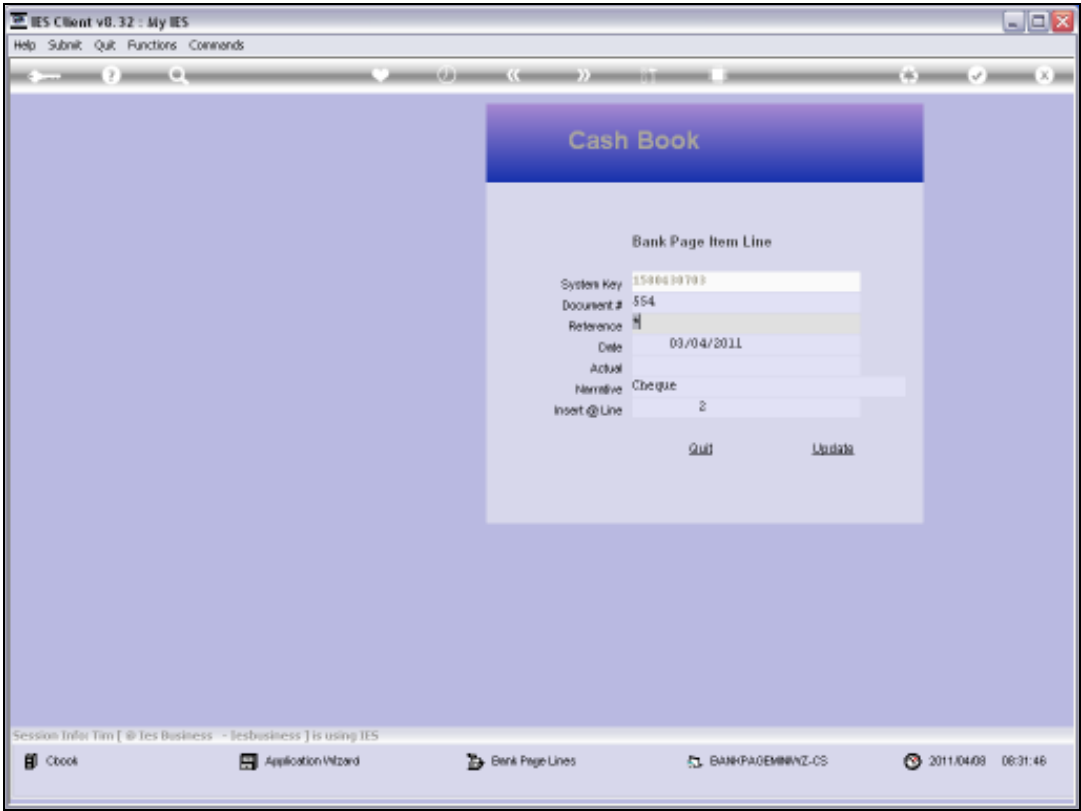
Slide 21

Slide notes:



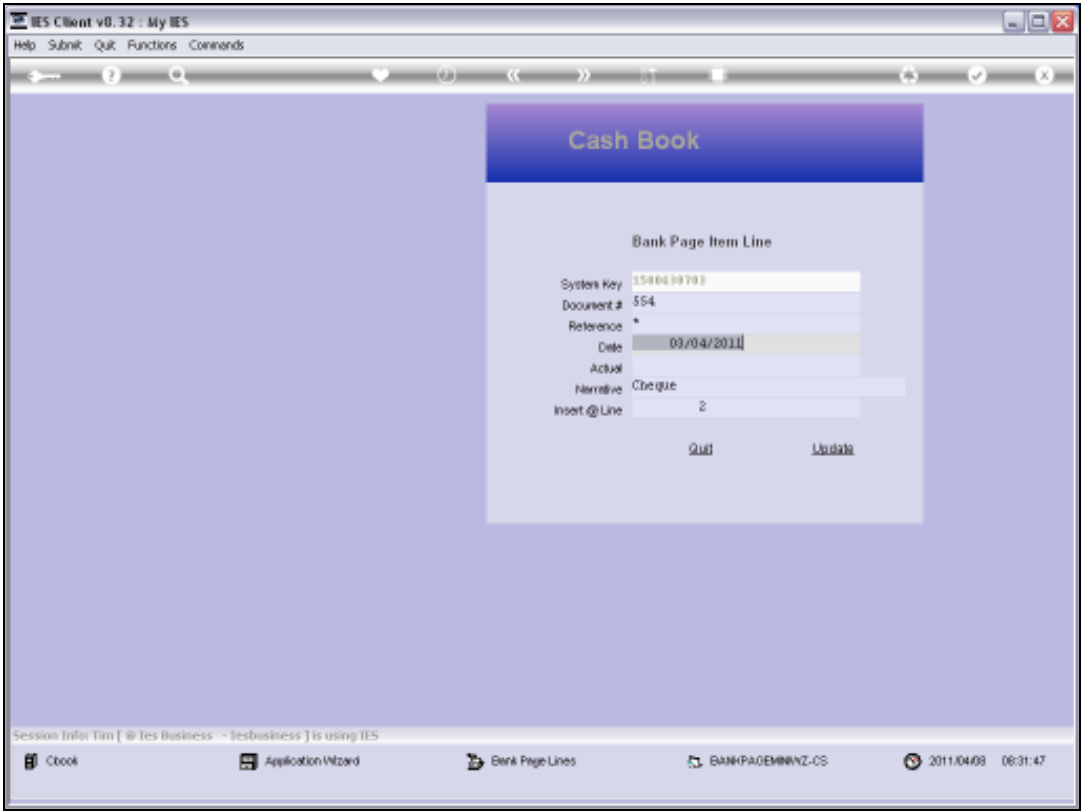
Slide 22

Slide notes:



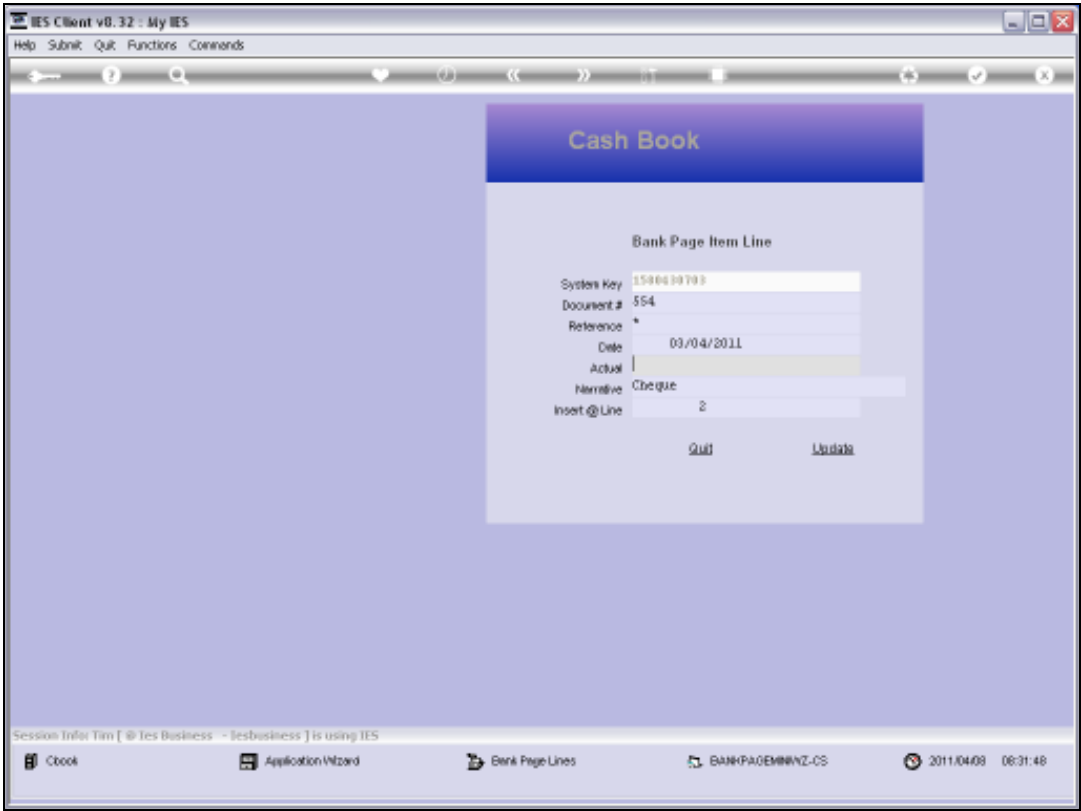
Slide 23

Slide notes:



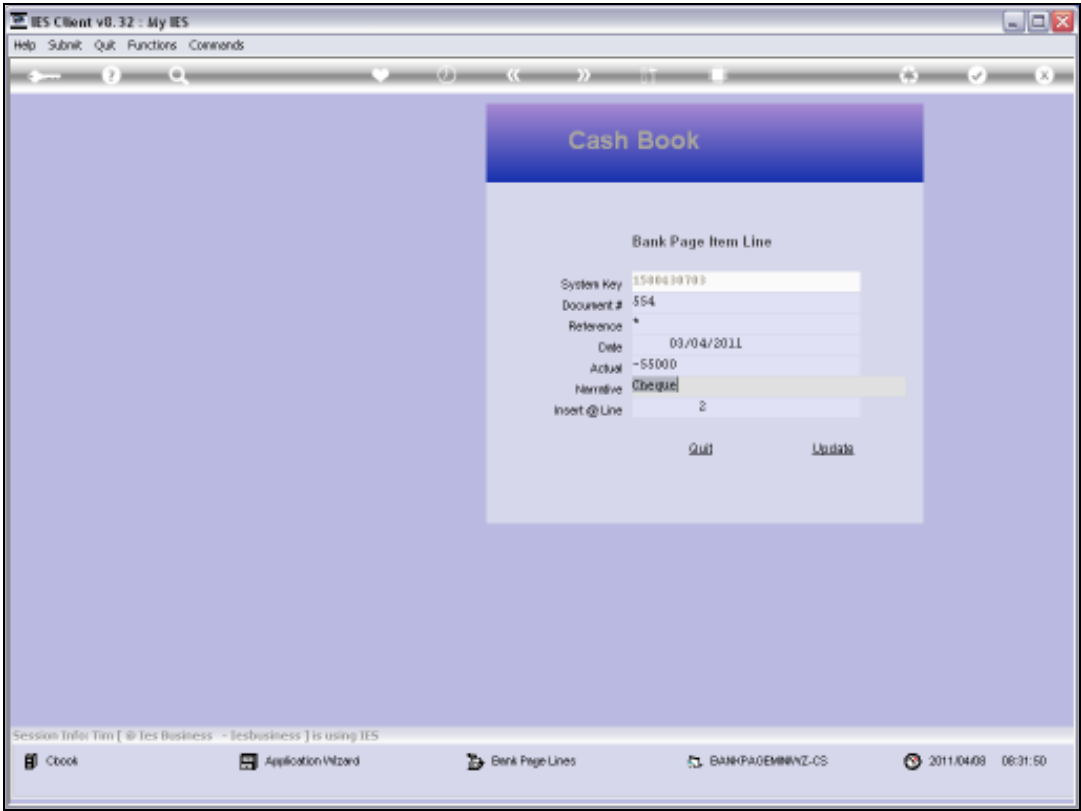
Slide 24

Slide notes:

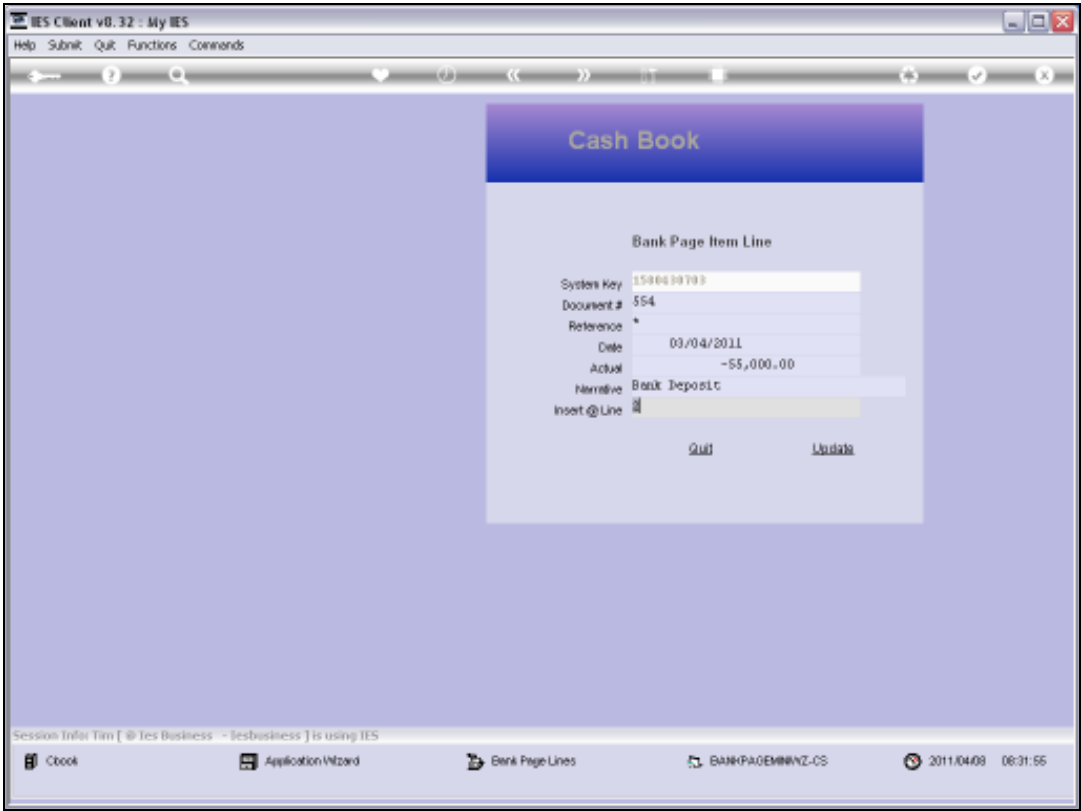


Slide 25

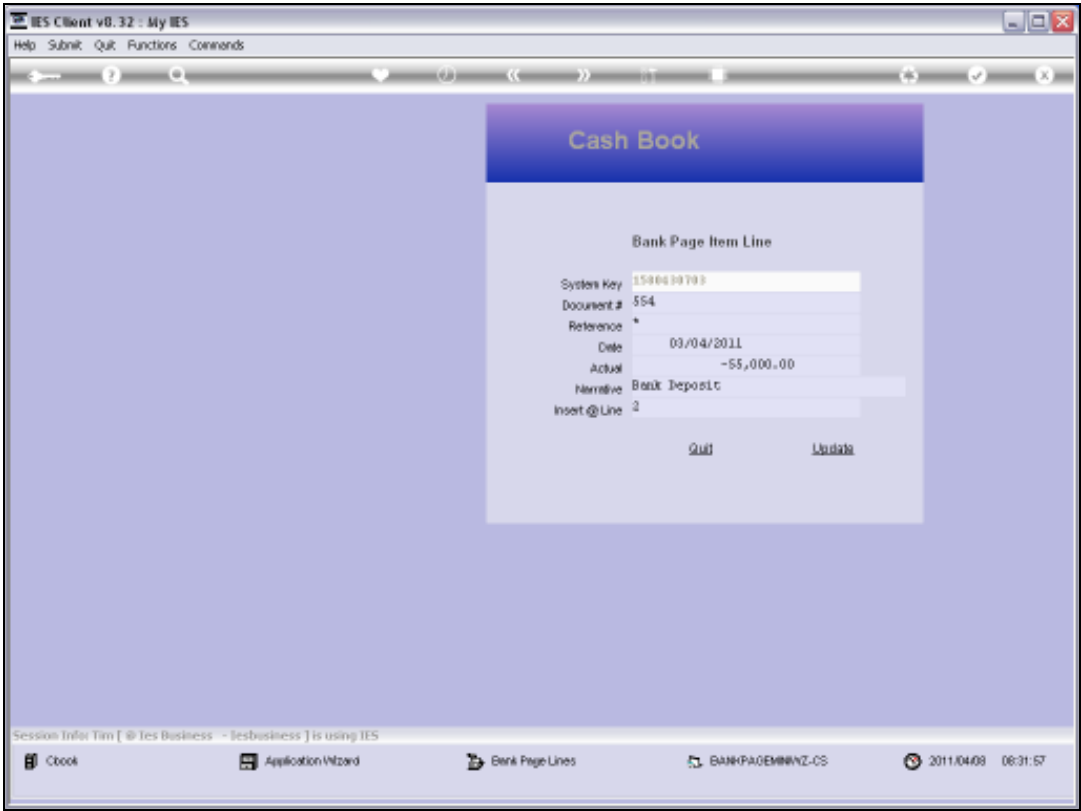
Slide notes:



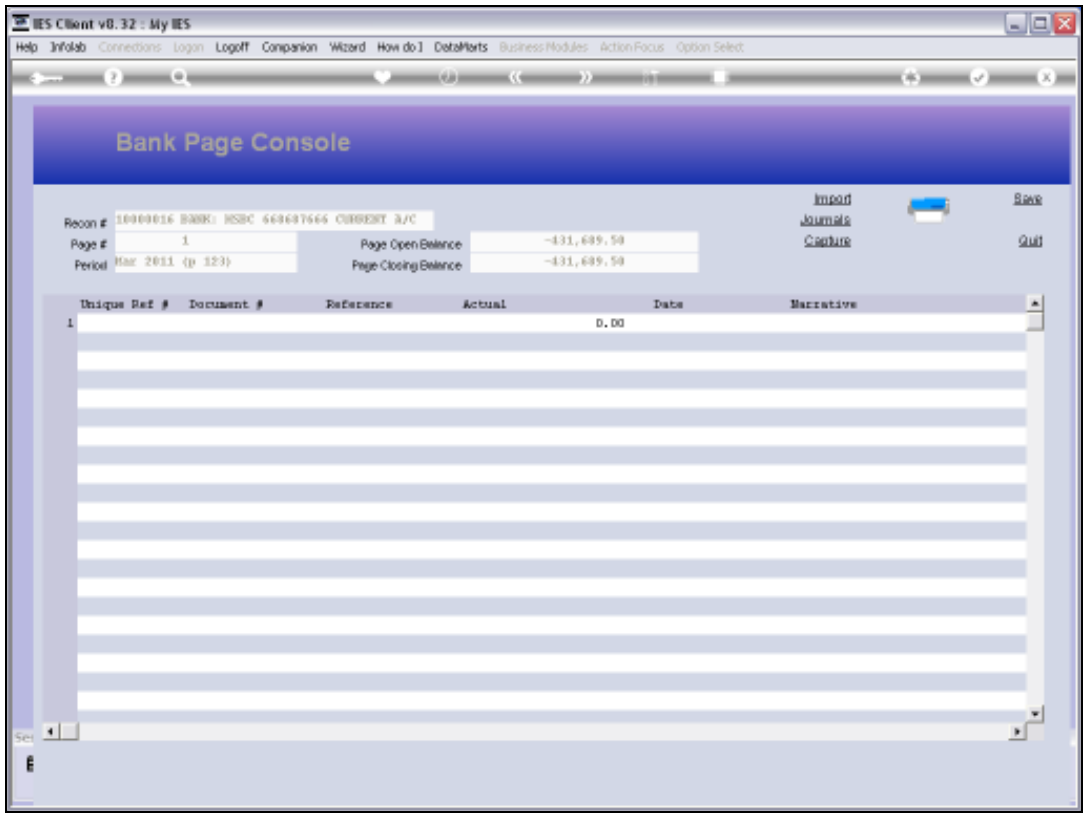
Slide 26
Slide notes:



Slide 27
Slide notes:

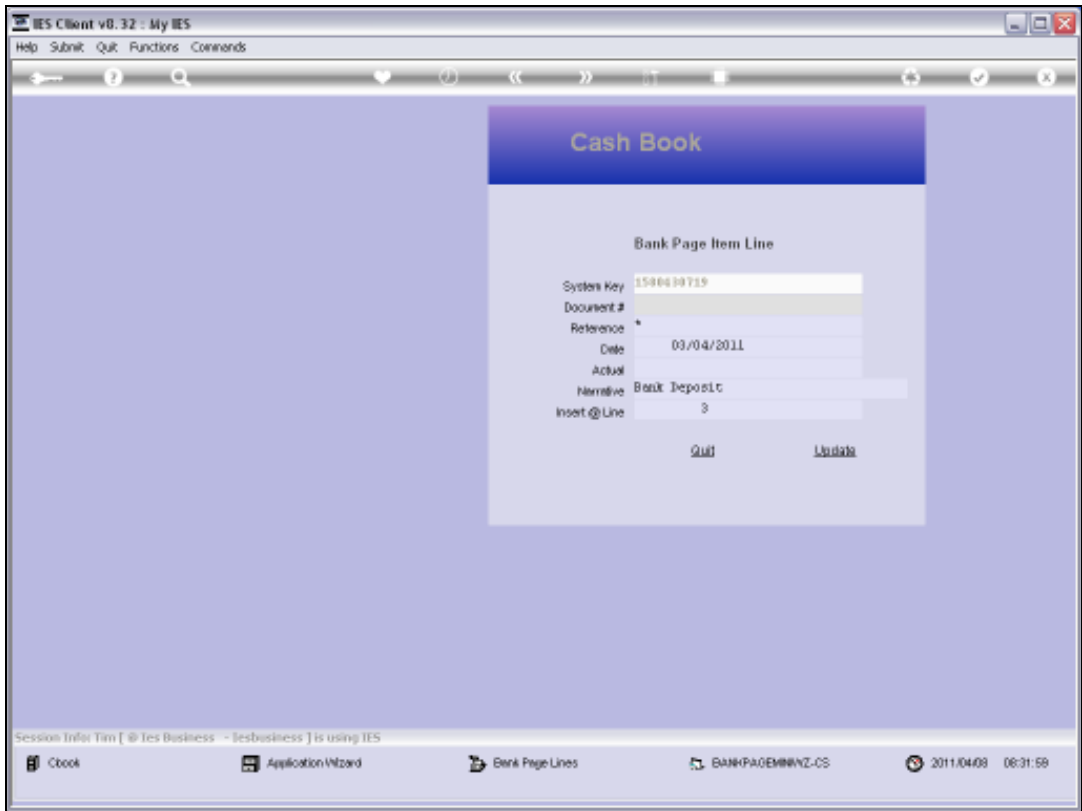


Slide 28
Slide notes:

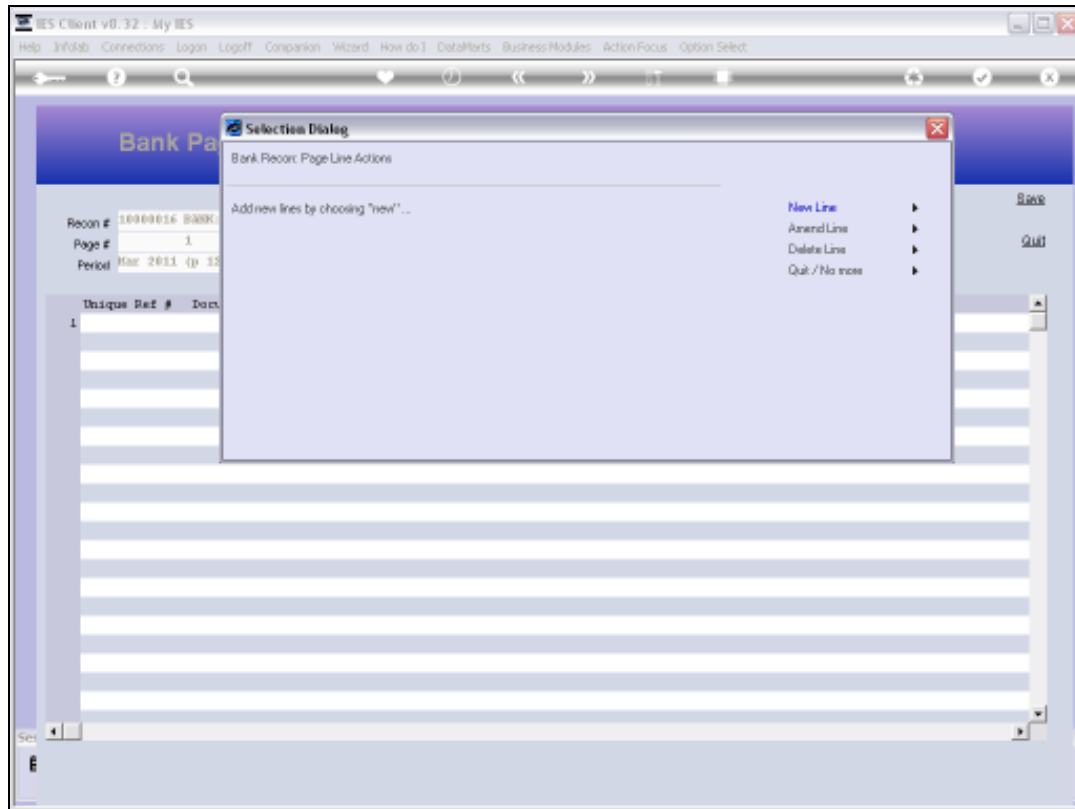


Slide 29

Slide notes:

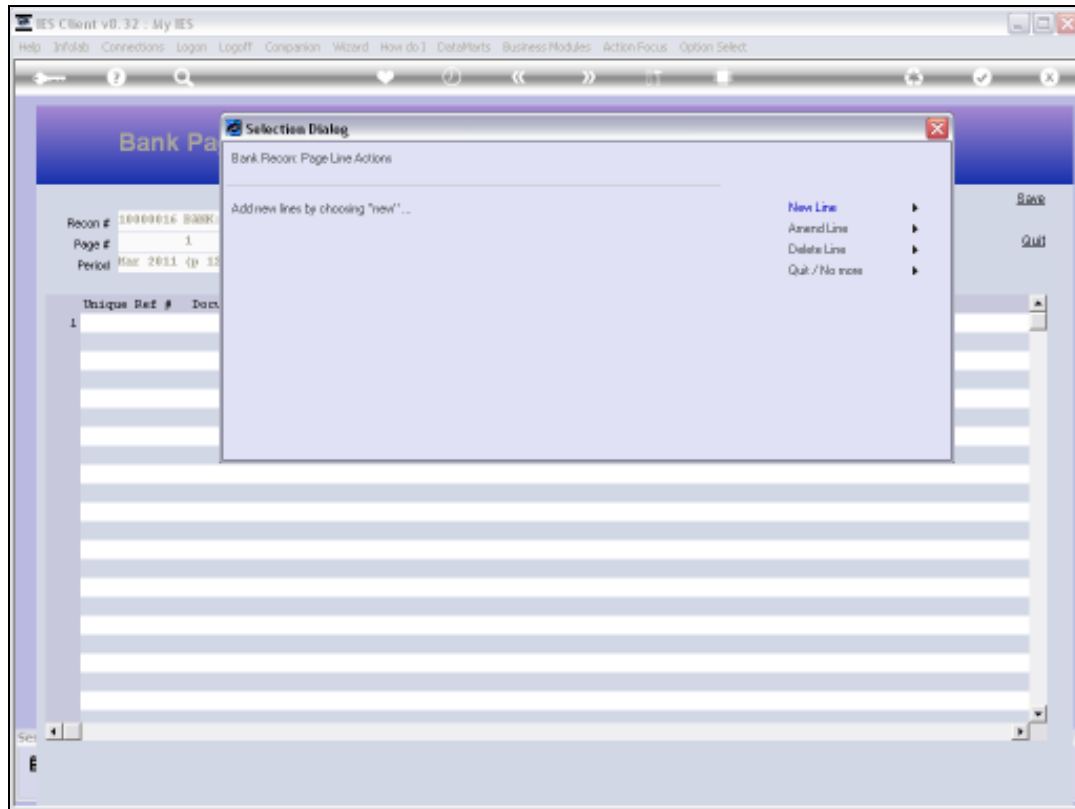


Slide 30
Slide notes:



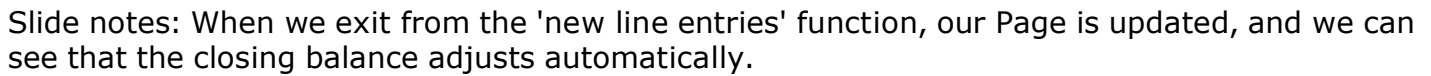
Slide 31

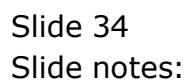
Slide notes:

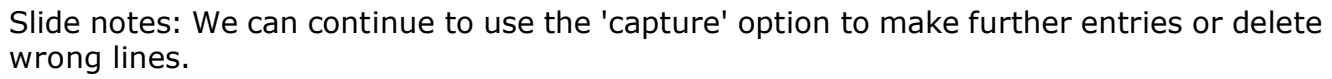


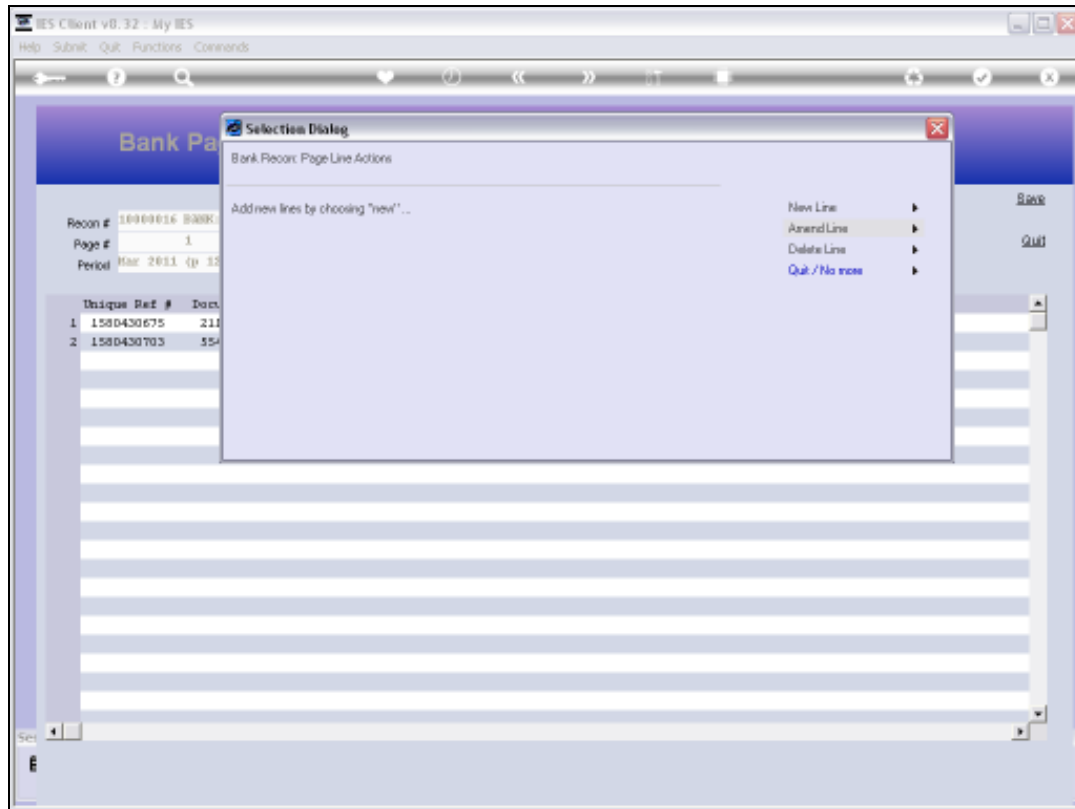
Slide 32

Slide notes:



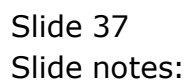


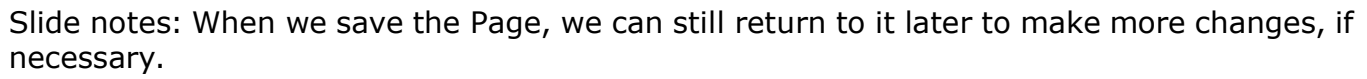




Slide 36

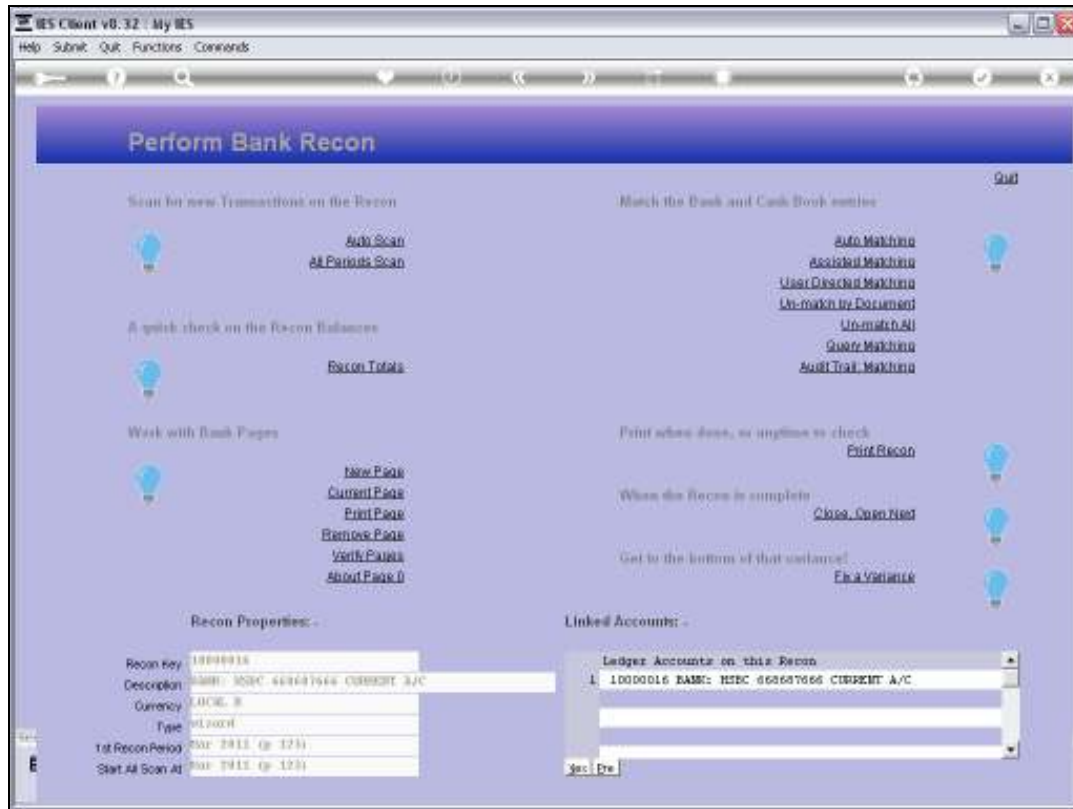
Slide notes:







Slide 39
Slide notes:



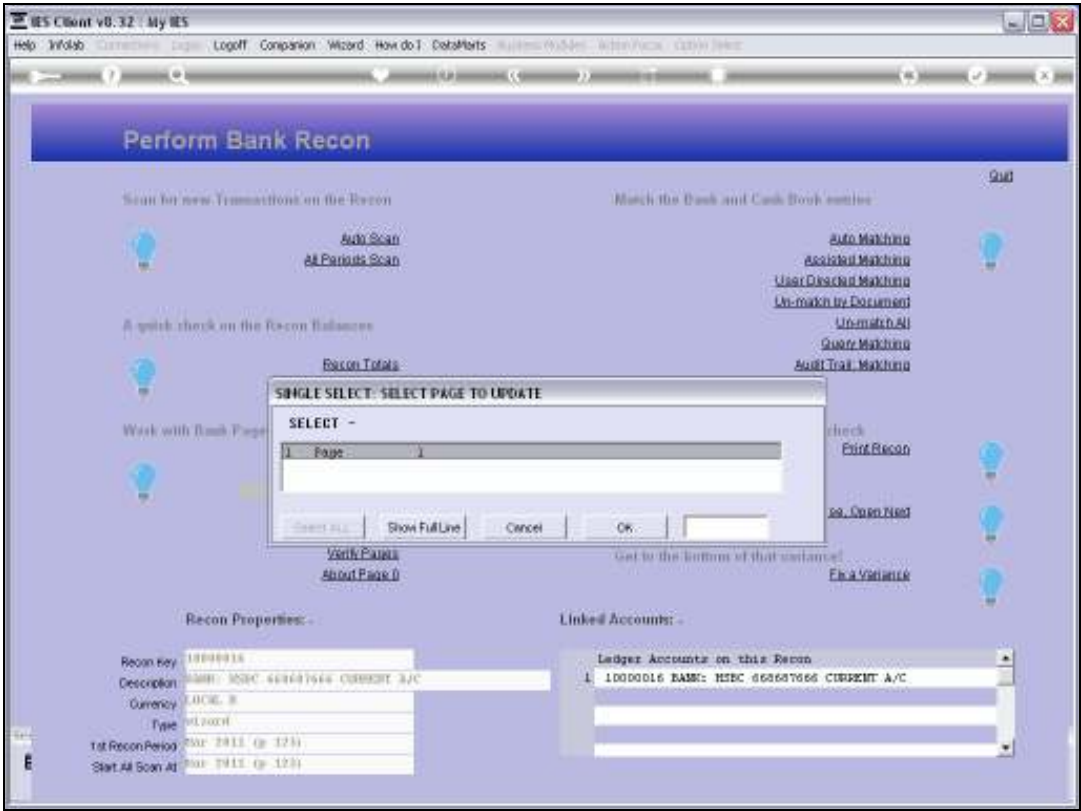
Slide 40

Slide notes: When we want to capture or import a new Bank Page, we use 'New Page', but once a Page already exists, we can still change it by choosing 'Current Page' and selecting from the available Pages on this Recon.



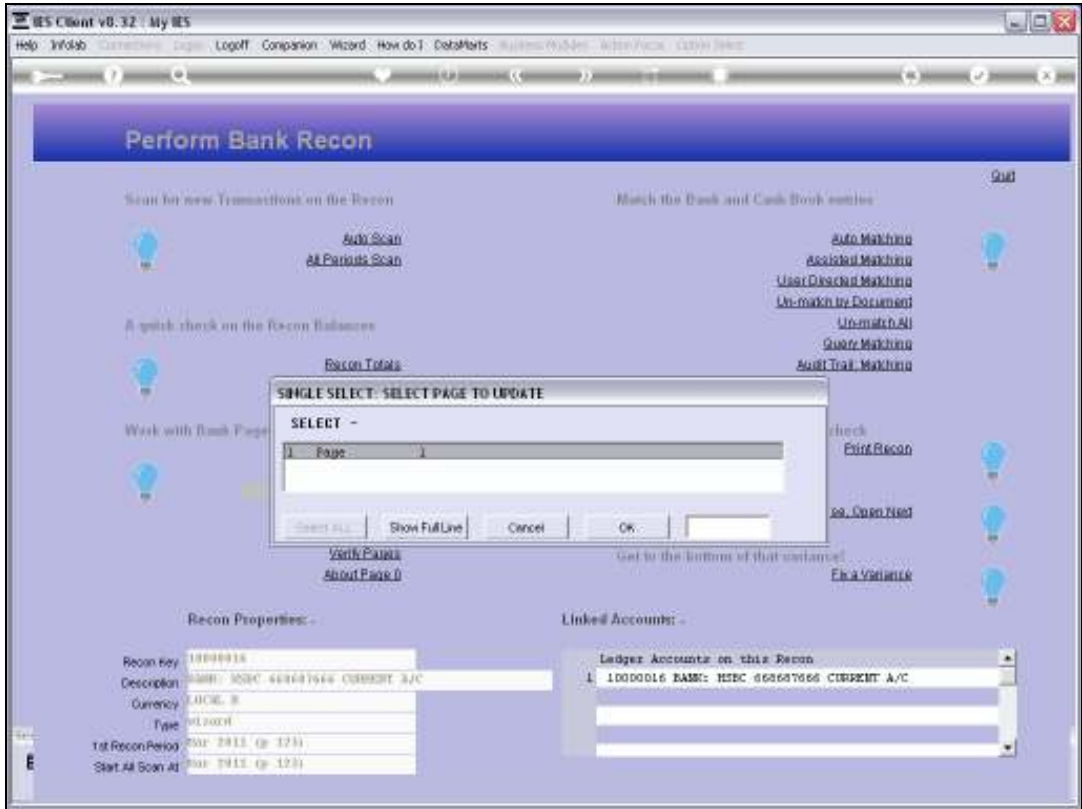
Slide 41

Slide notes:



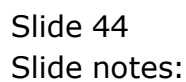
Slide 42

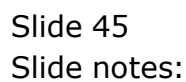
Slide notes:

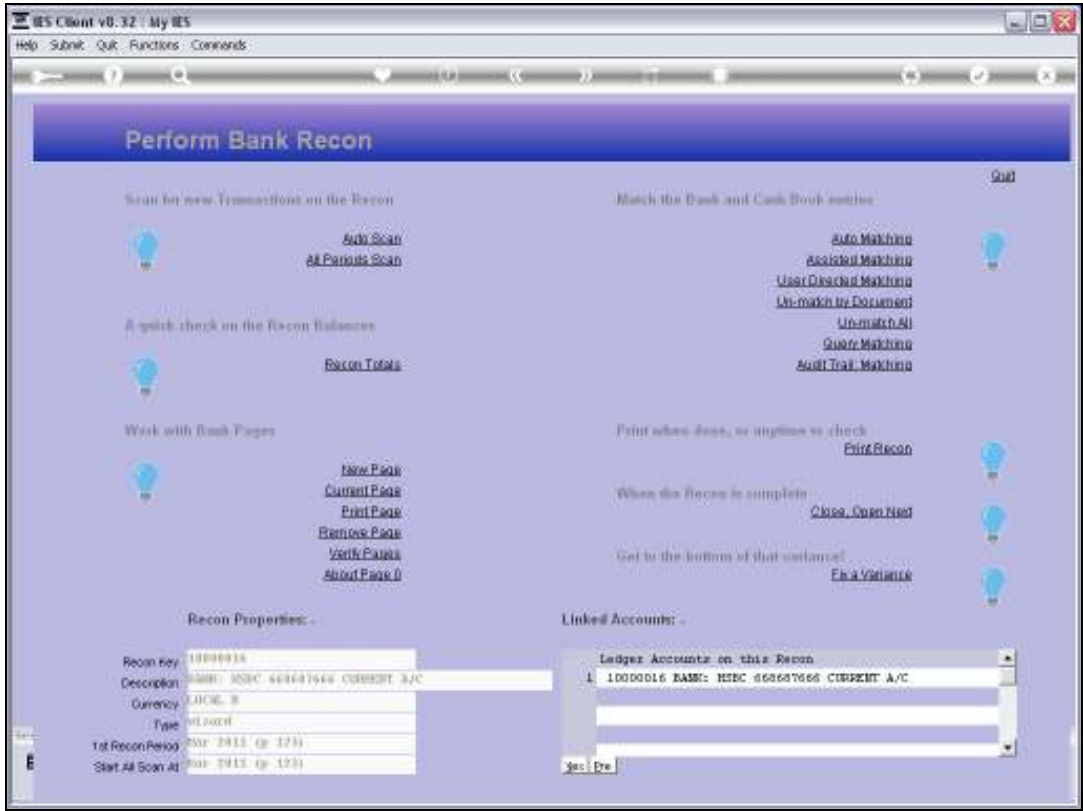


Slide 43

Slide notes:







Slide 46

Slide notes:



Slide 47

Slide notes: