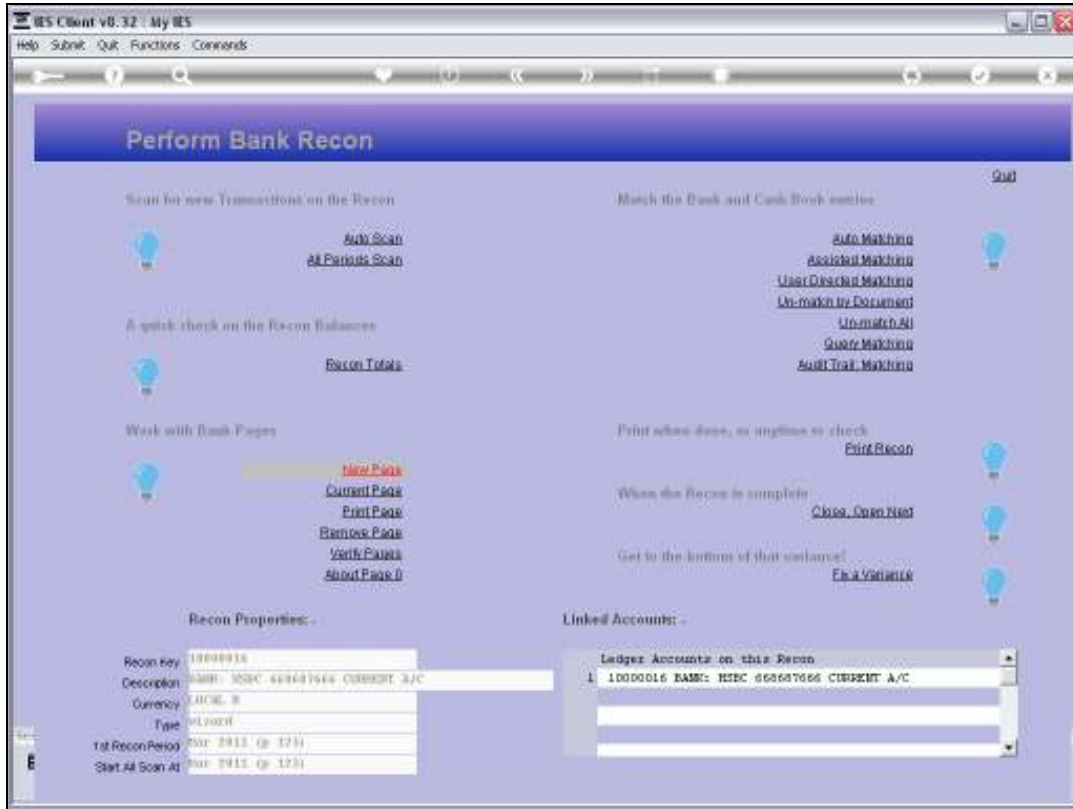


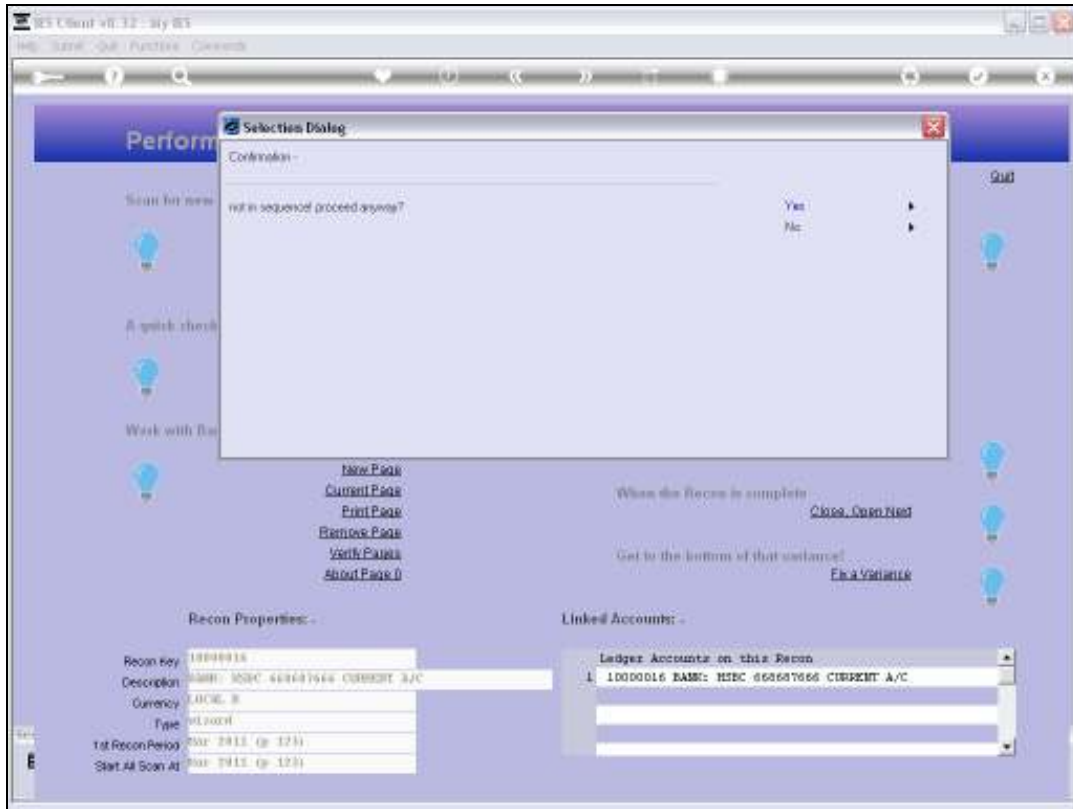
Slide 1

Slide notes: When we use 'New Page', the system offers the next logical Page Number, starting from 1 on a new Recon Master.

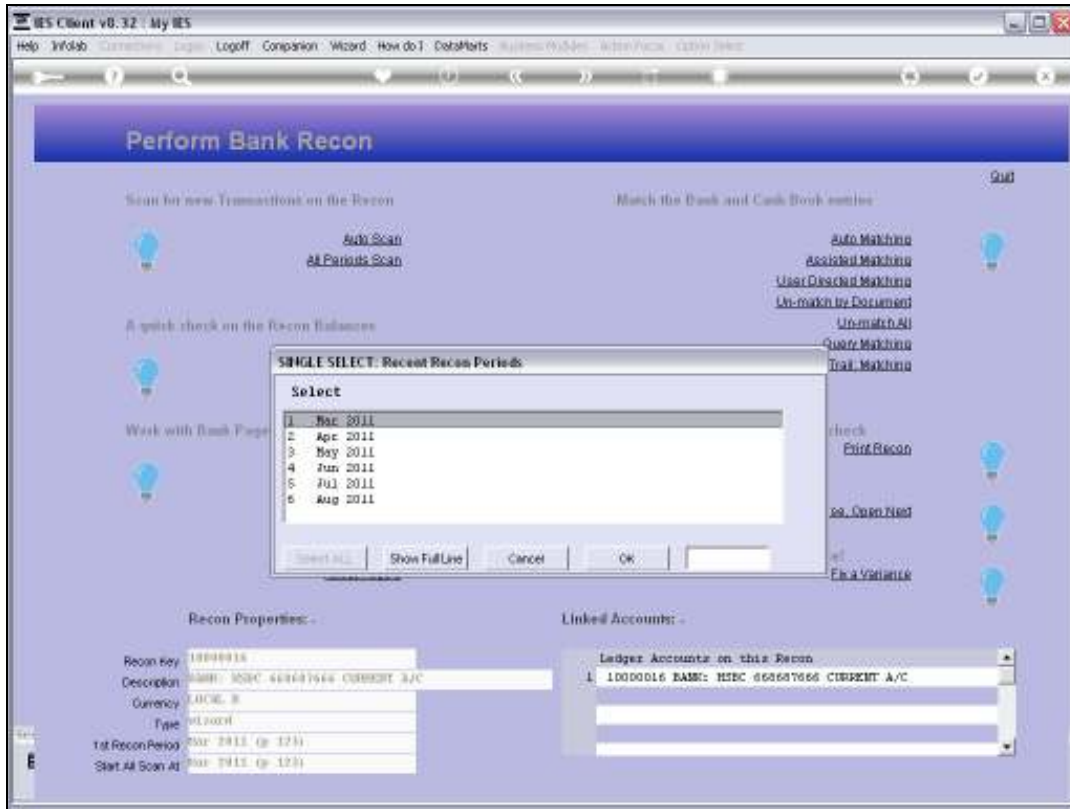


Slide 2

Slide notes: It is perfectly acceptable to work with the system range of numbers, even if they are different to the real Bank Page Numbers on the Bank Statement. However, if we wish the number to be the same, we can skip Numbers in the series and use the actual Bank Page Number.

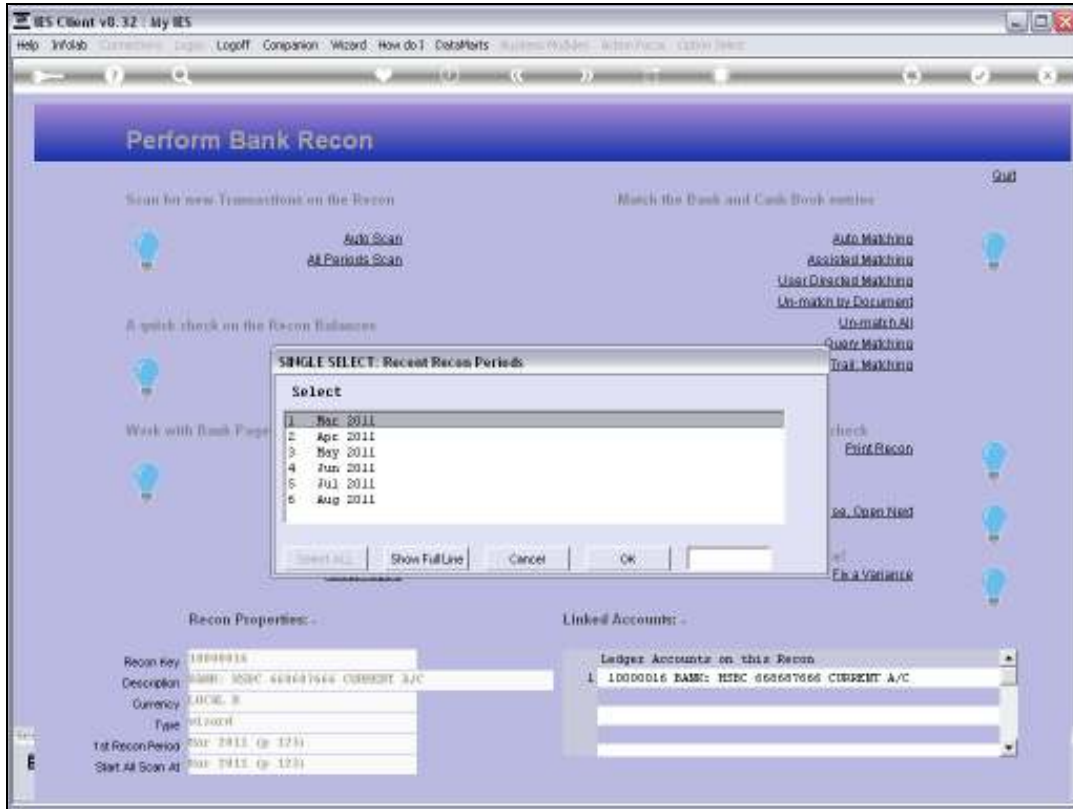


Slide 3
Slide notes:

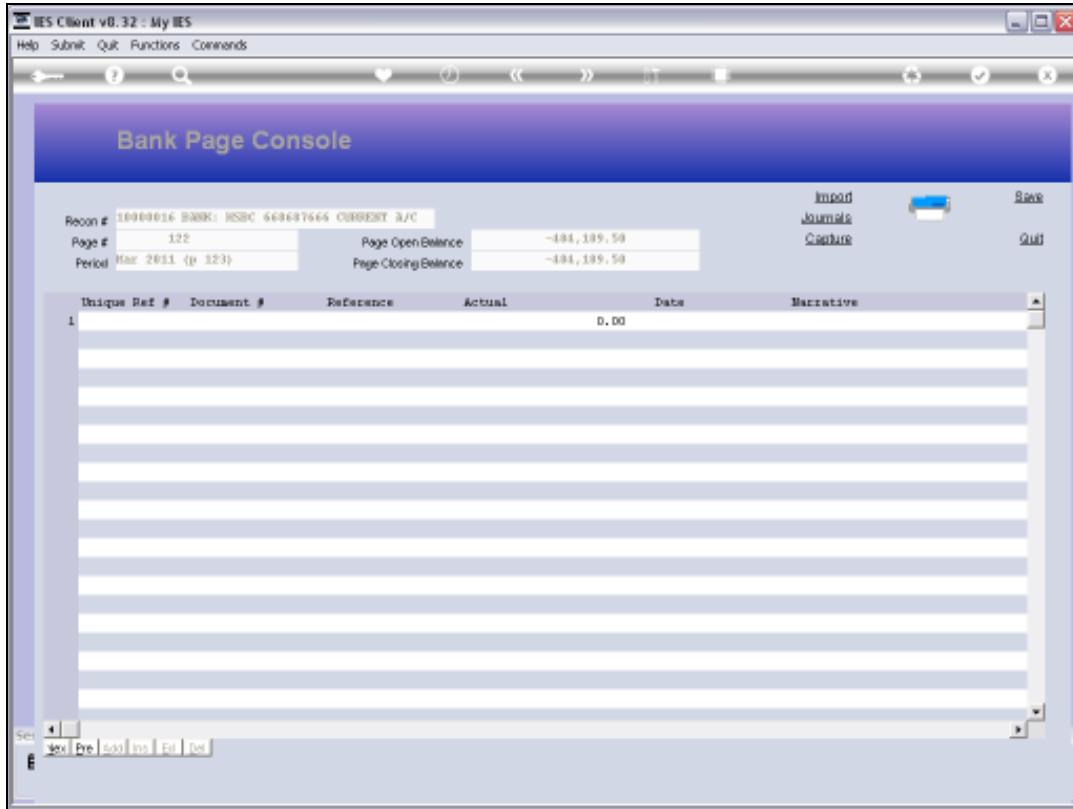


Slide 4

Slide notes:

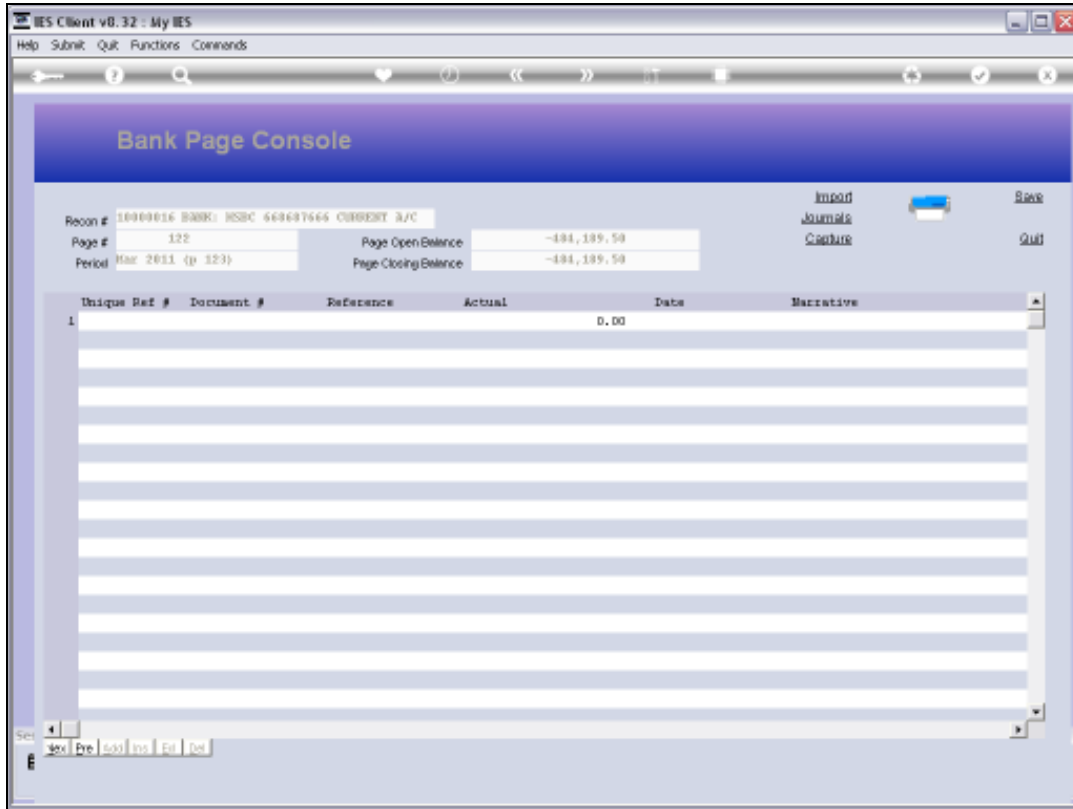


Slide 5
Slide notes:



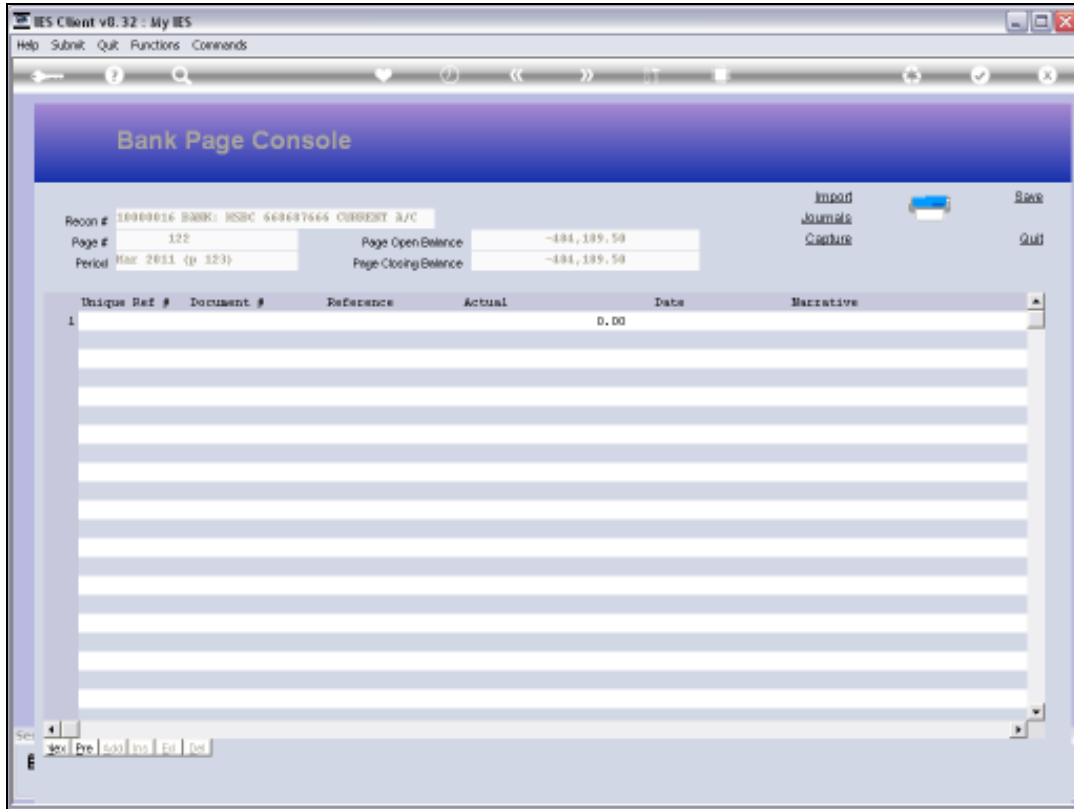
Slide 6

Slide notes:



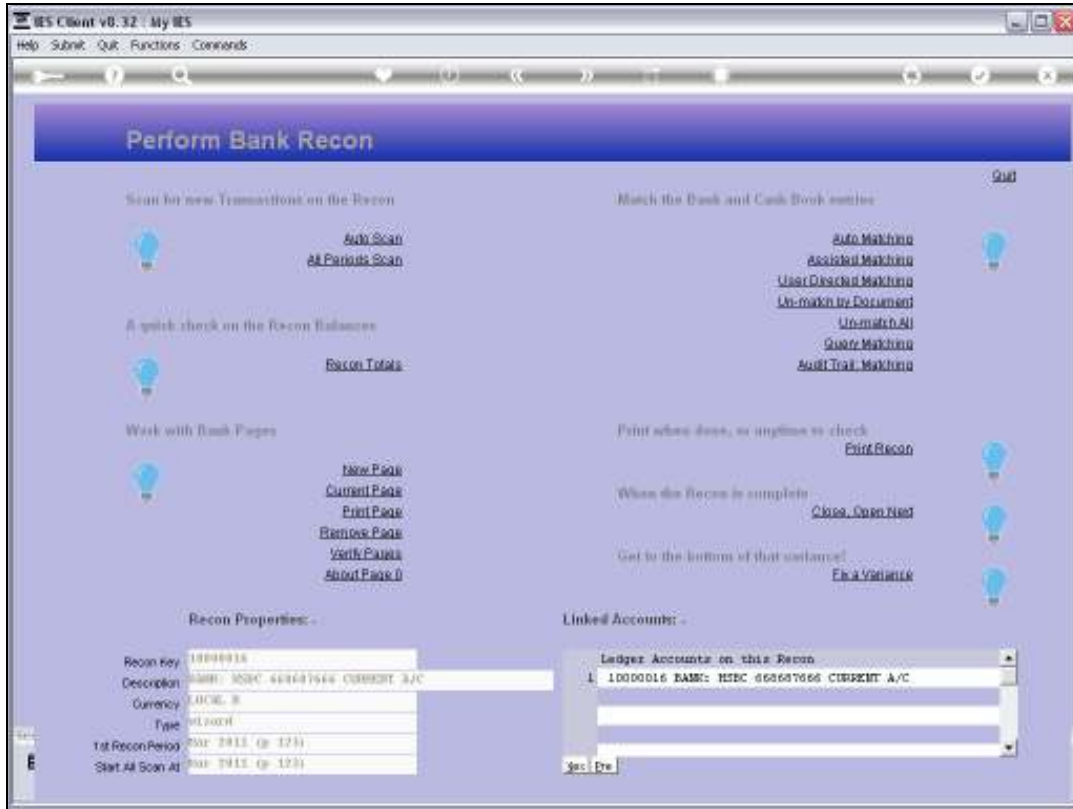
Slide 7

Slide notes:



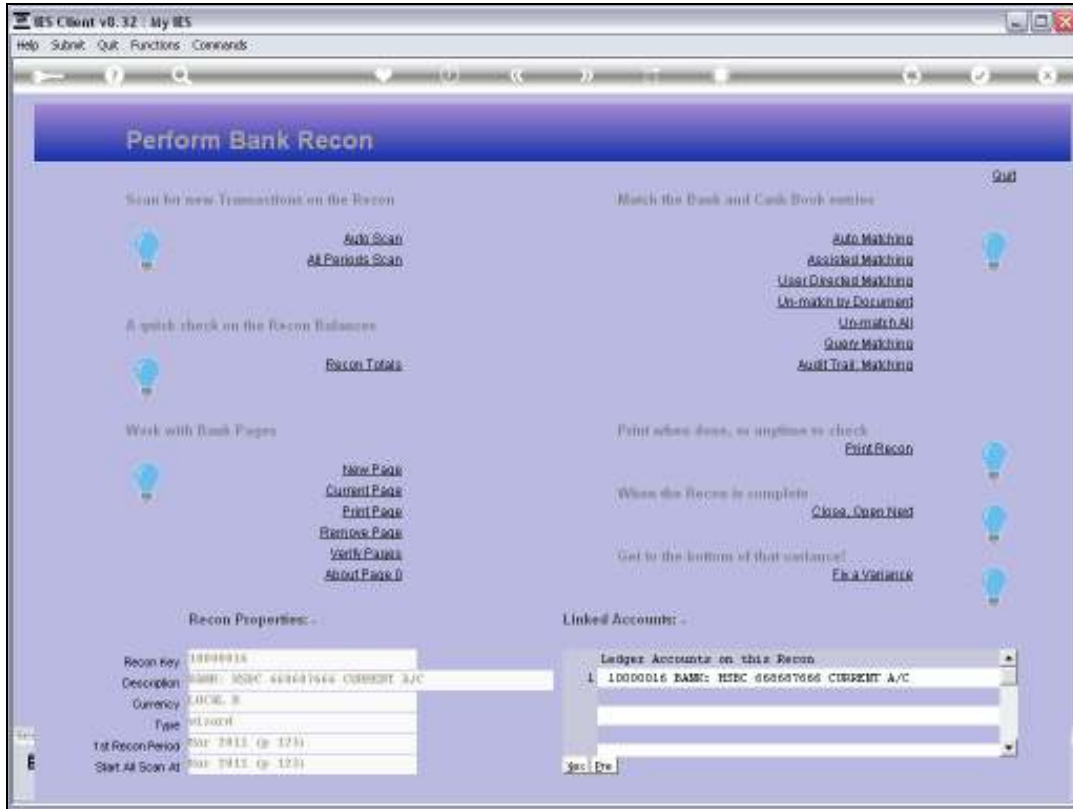
Slide 8

Slide notes:



Slide 9

Slide notes:



Slide 10
Slide notes: