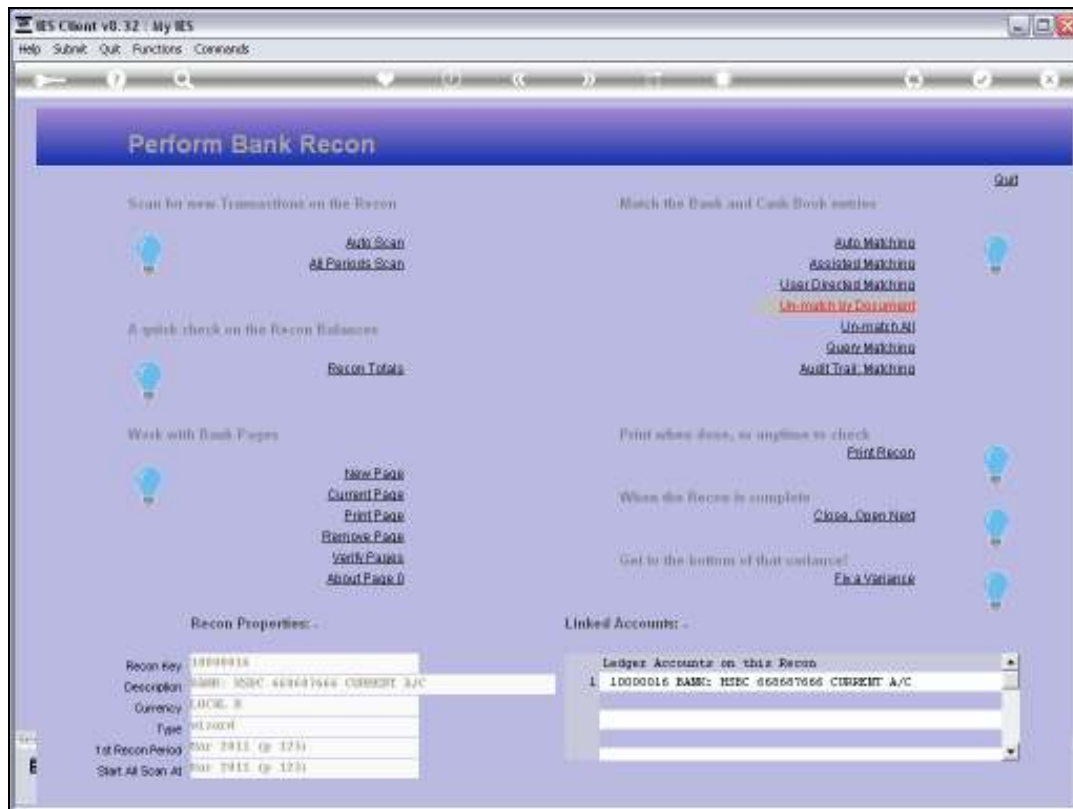


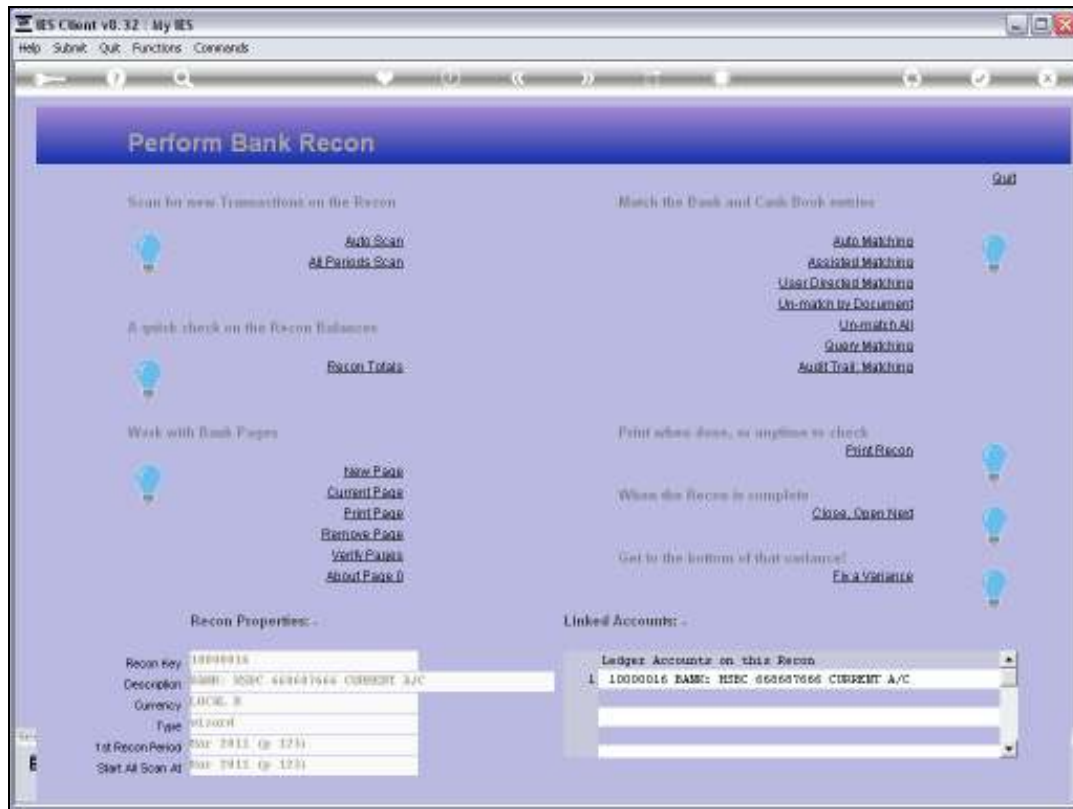
Slide 1

Slide notes: If we have matched something incorrectly, we can undo the match by quoting the Document Number.



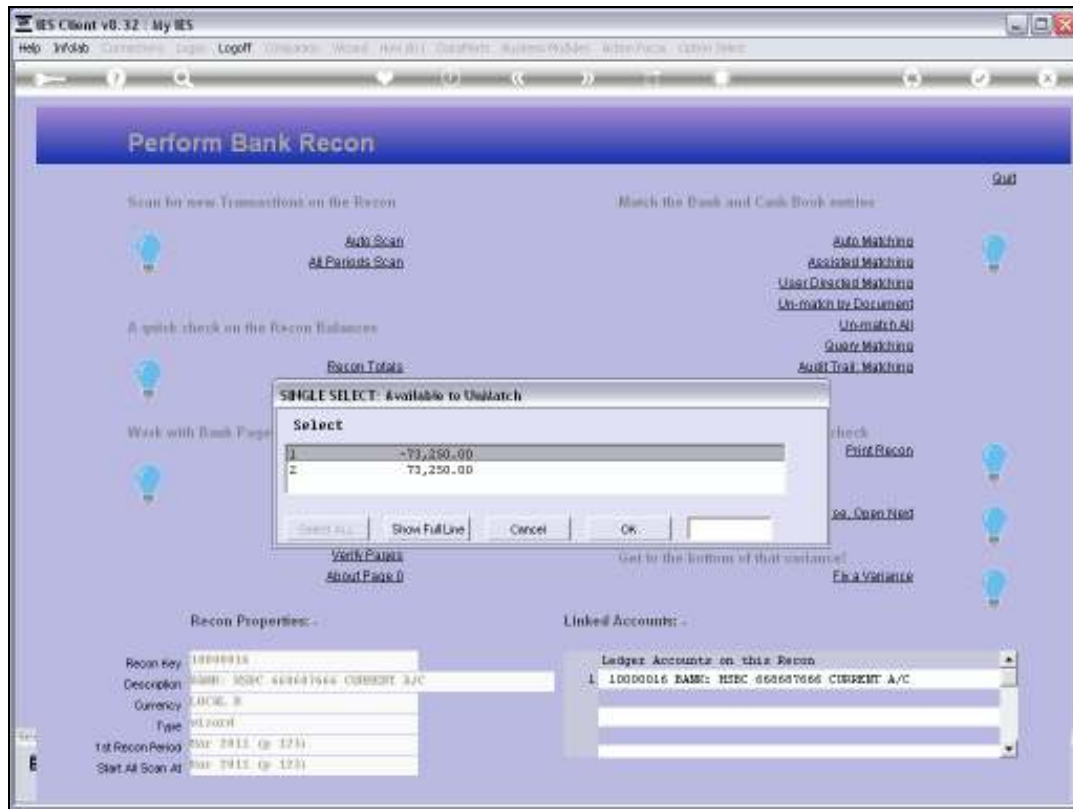
Slide 2

Slide notes:



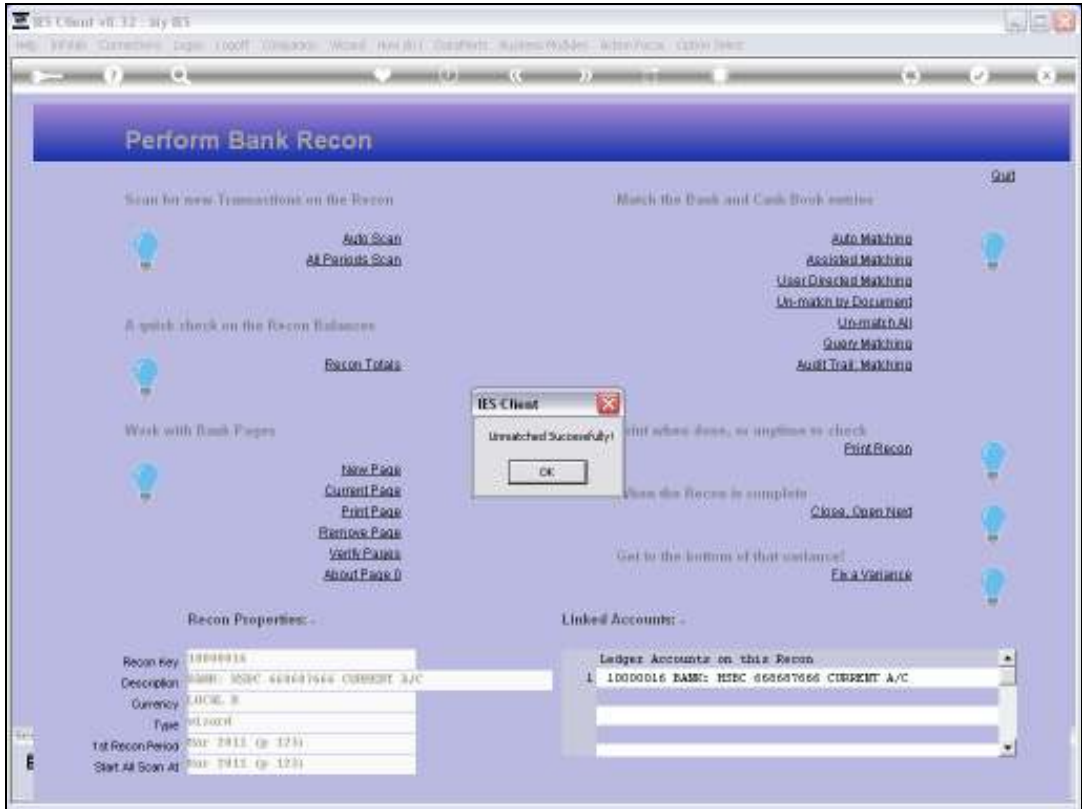
Slide 3

Slide notes:

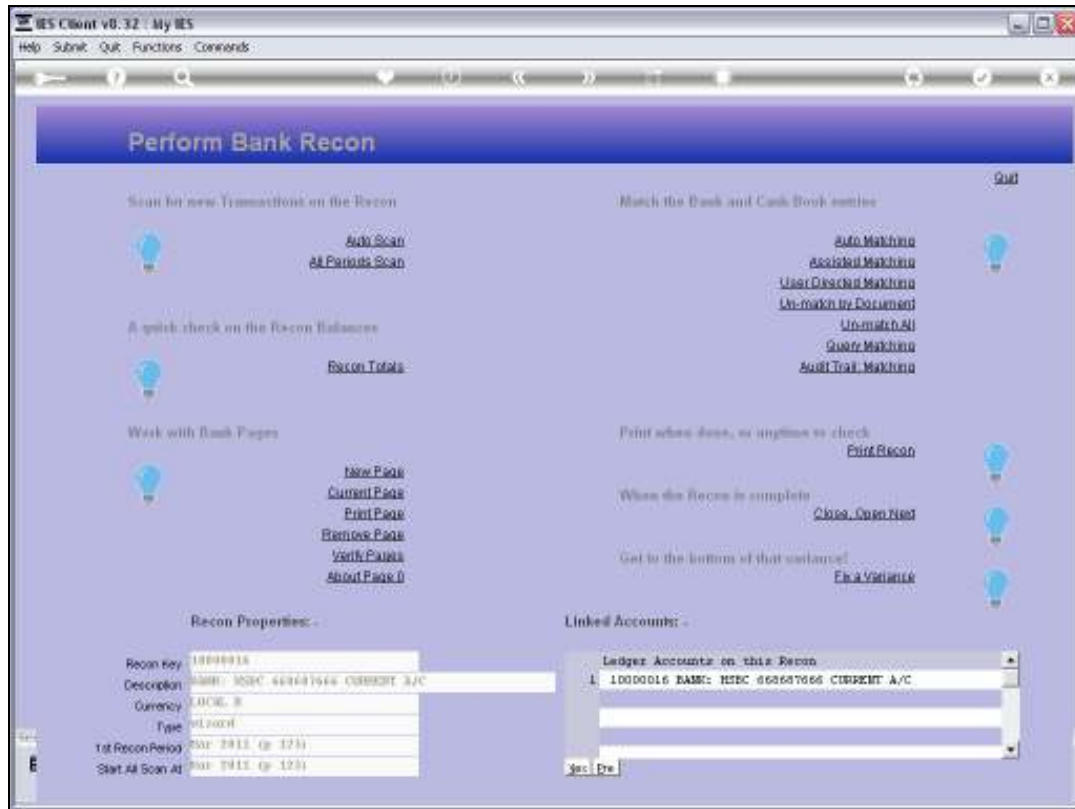


## Slide 4

Slide notes: In this case, both entries in the match are using the same Document Number, and we only need to select either one of the entries. When a match is undone, then the entire match is undone, including all entries on the match, whether using the same Document Number or different.

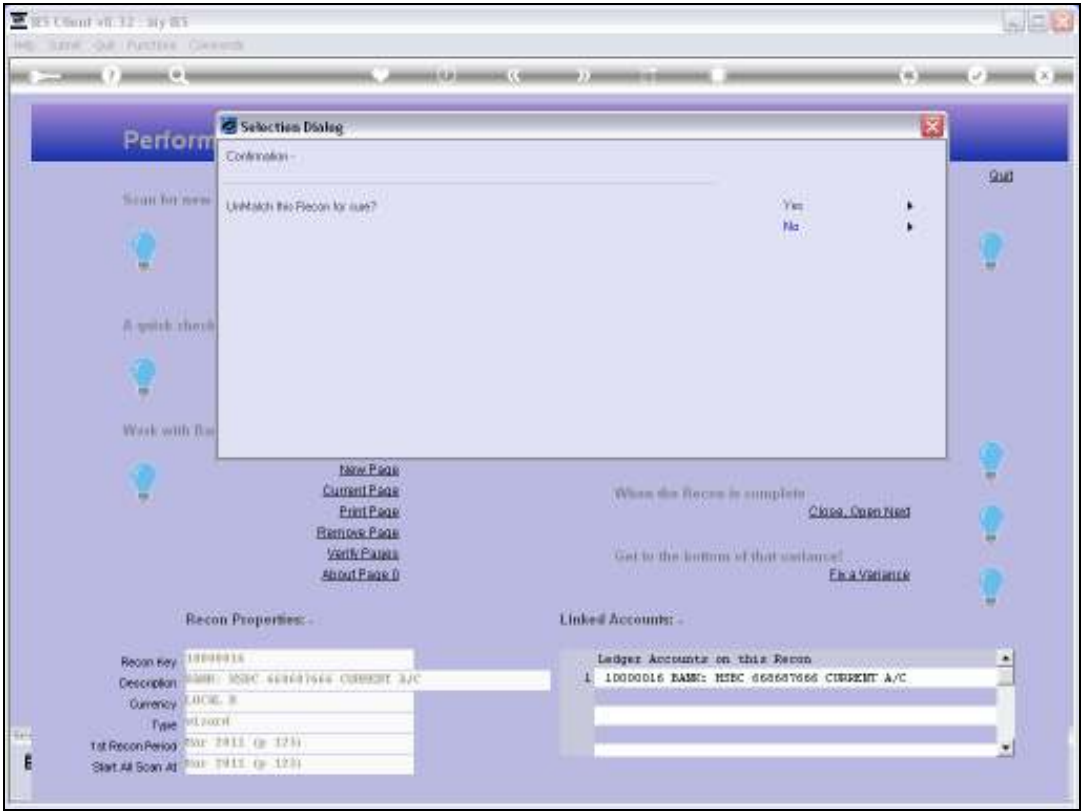


Slide 5  
Slide notes:



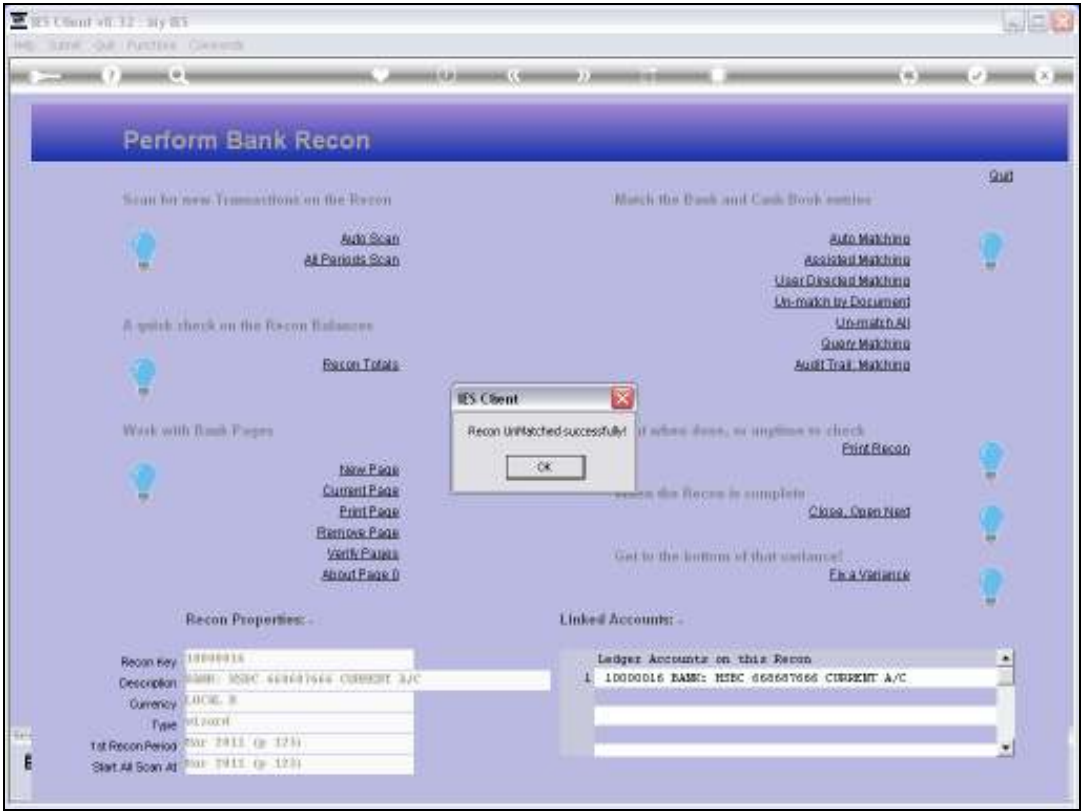
Slide 6

Slide notes: We can also undo all matching for the current Recon, and start fresh again.



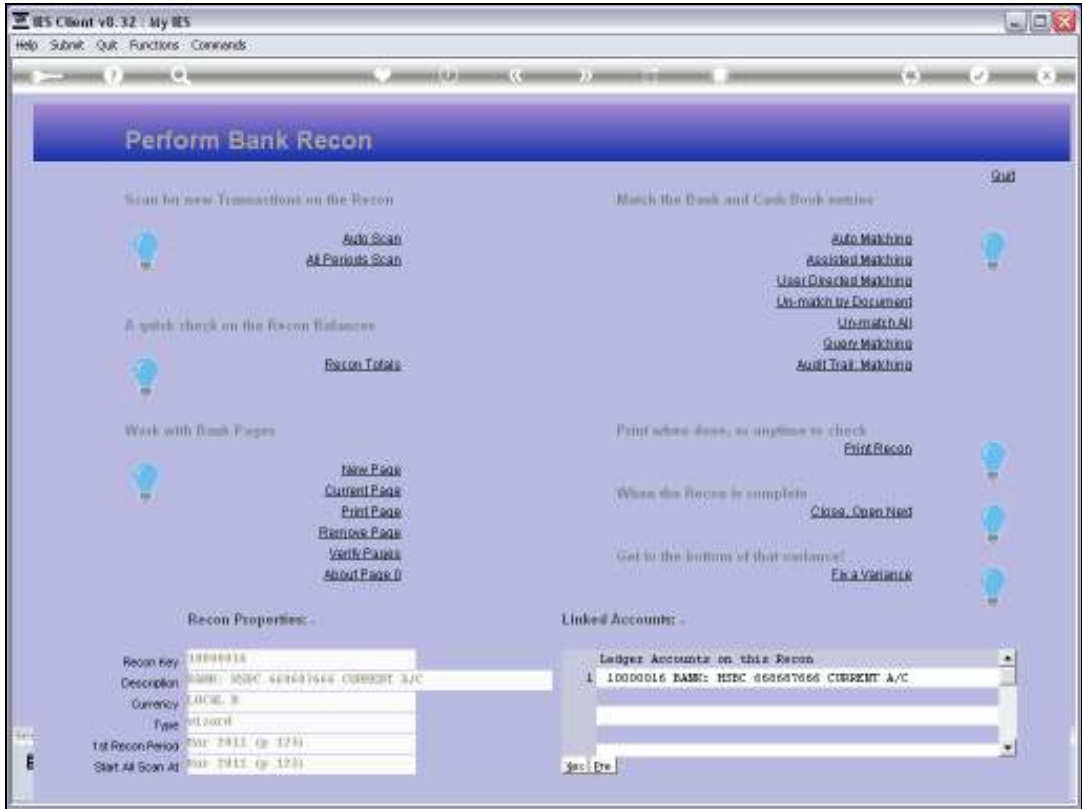
Slide 7

Slide notes:



Slide 8  
Slide notes:





Slide 9

Slide notes: