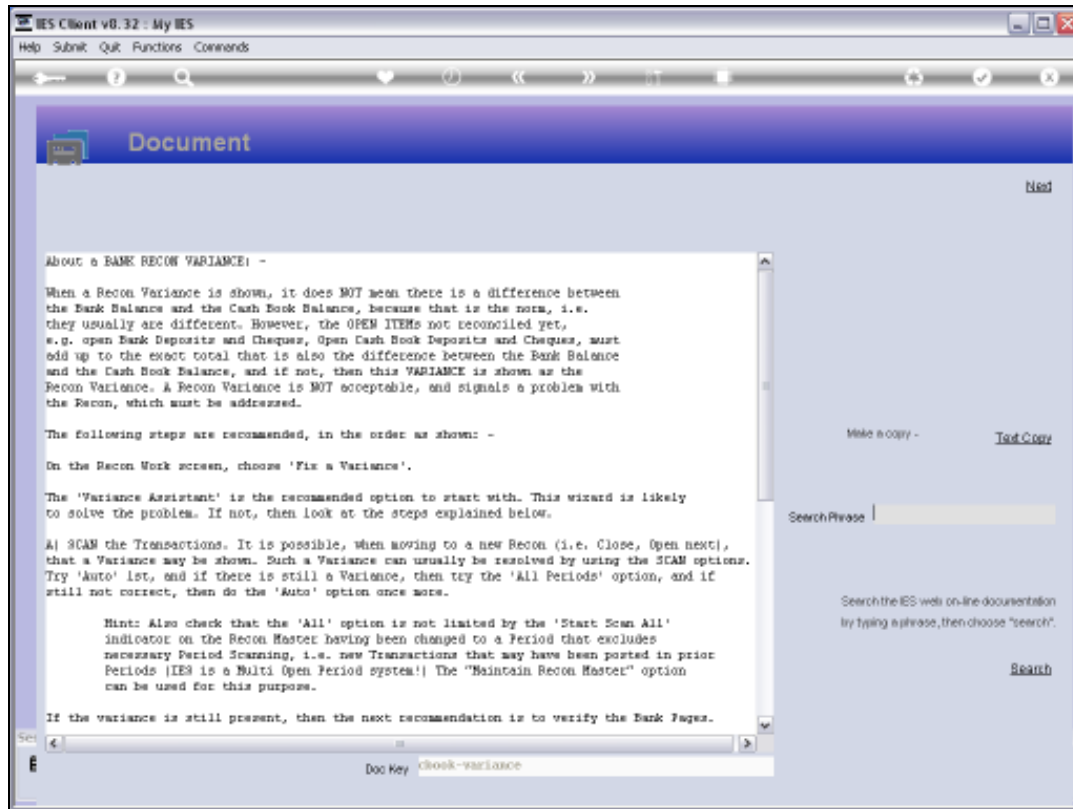


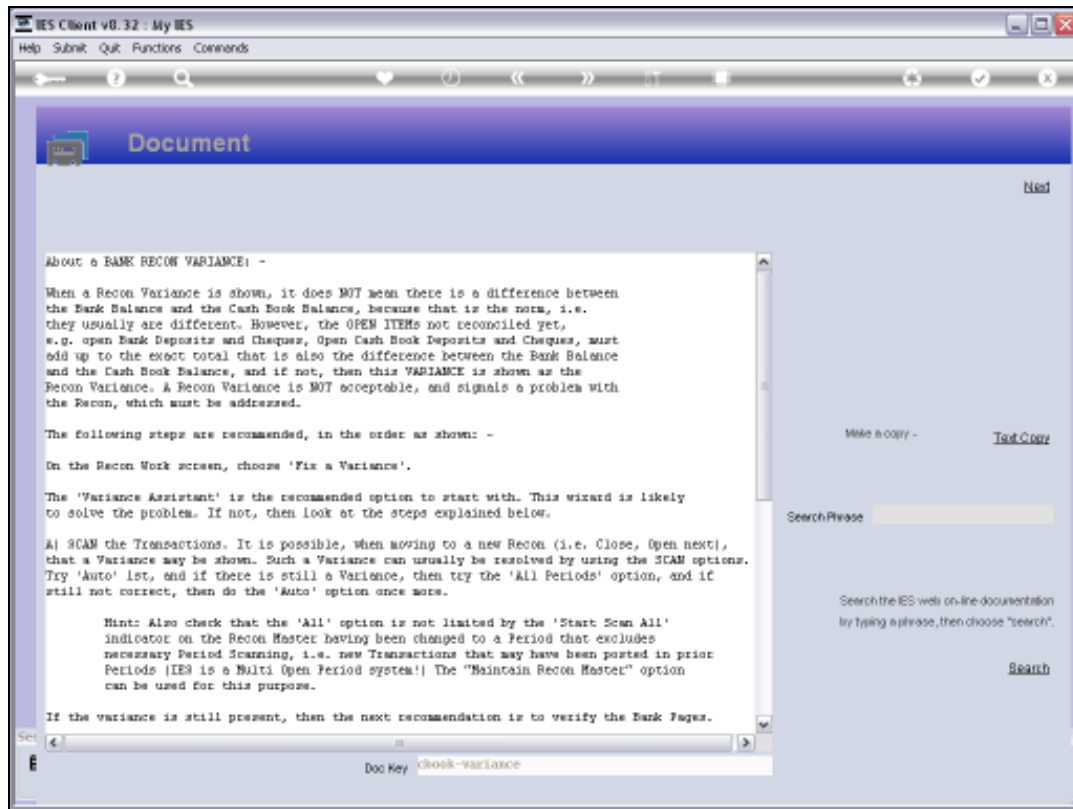
Slide 1

Slide notes: Reconstruction of a Recon is a 'last resort' option that we will only use if the Recon has a Variance and the Variance Assistant is not able to resolve the problem.



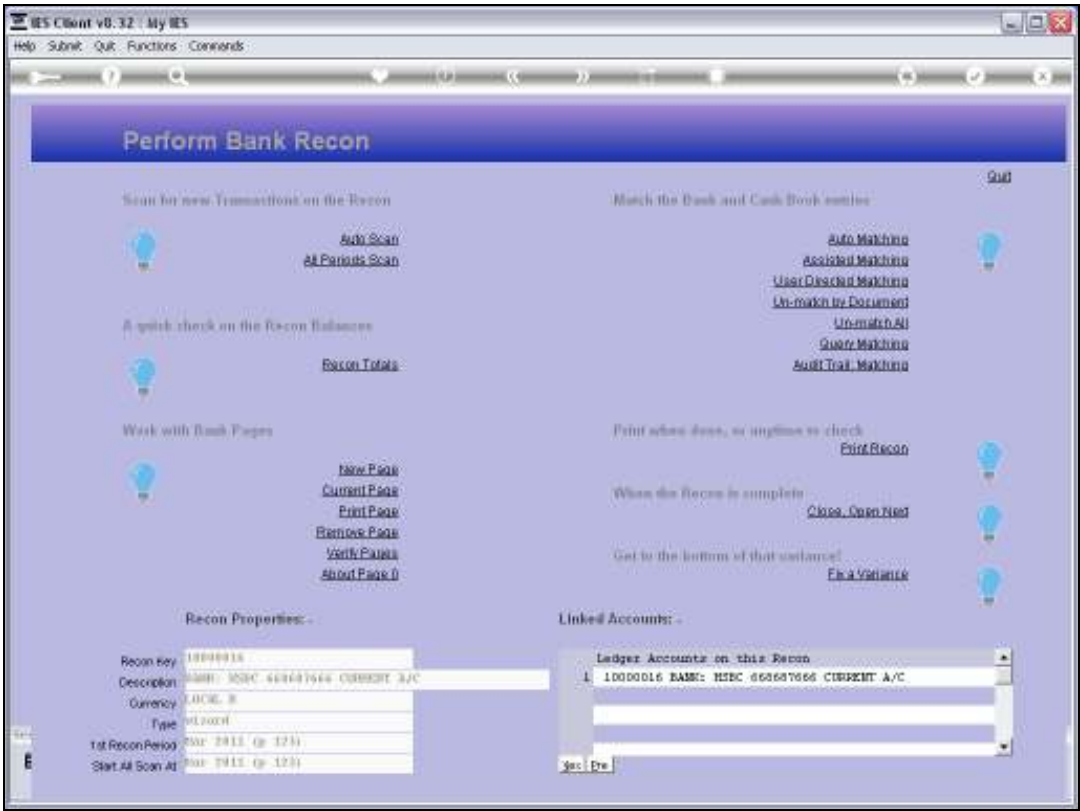
Slide 2

Slide notes: The help document explains it all.



Slide 3

Slide notes:



Slide 4

Slide notes:

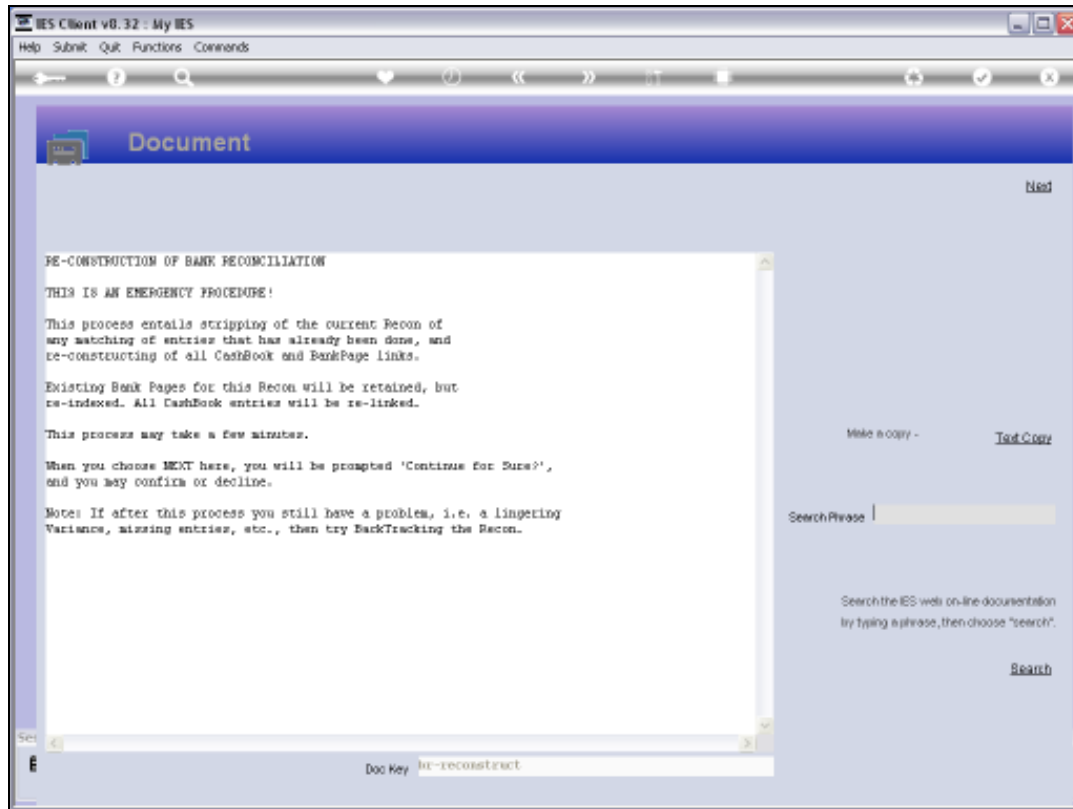


Slide 5

Slide notes:

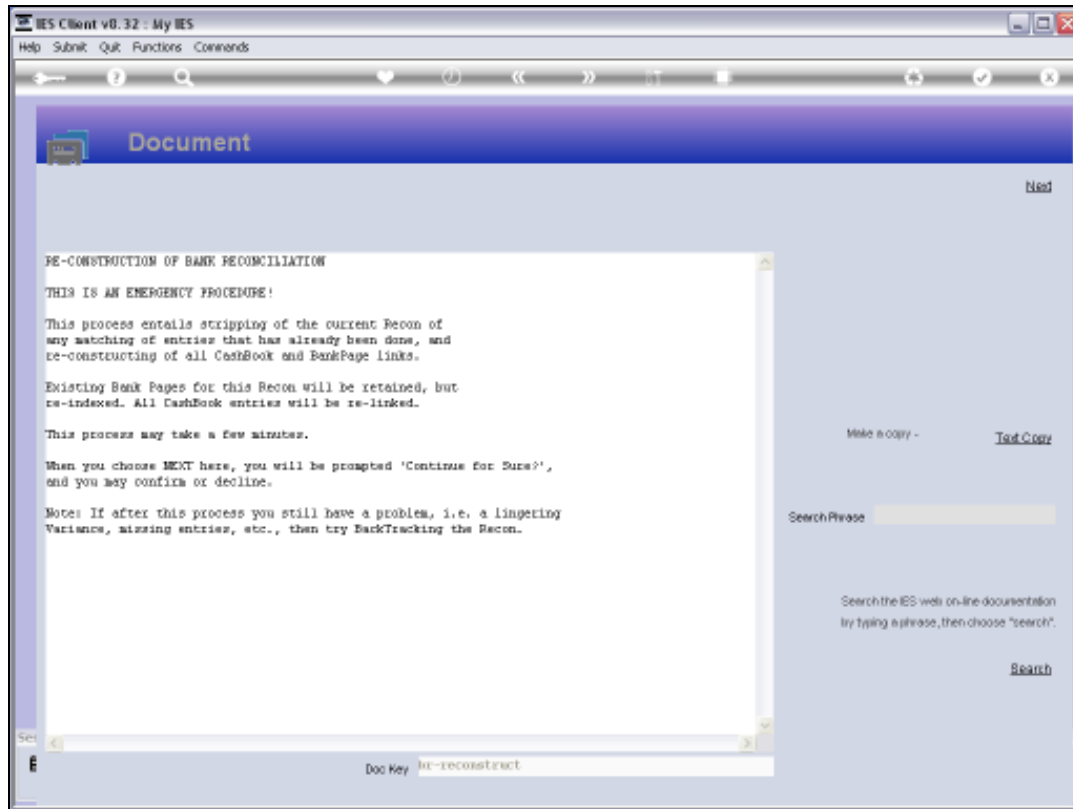


Slide 6  
Slide notes:



Slide 7

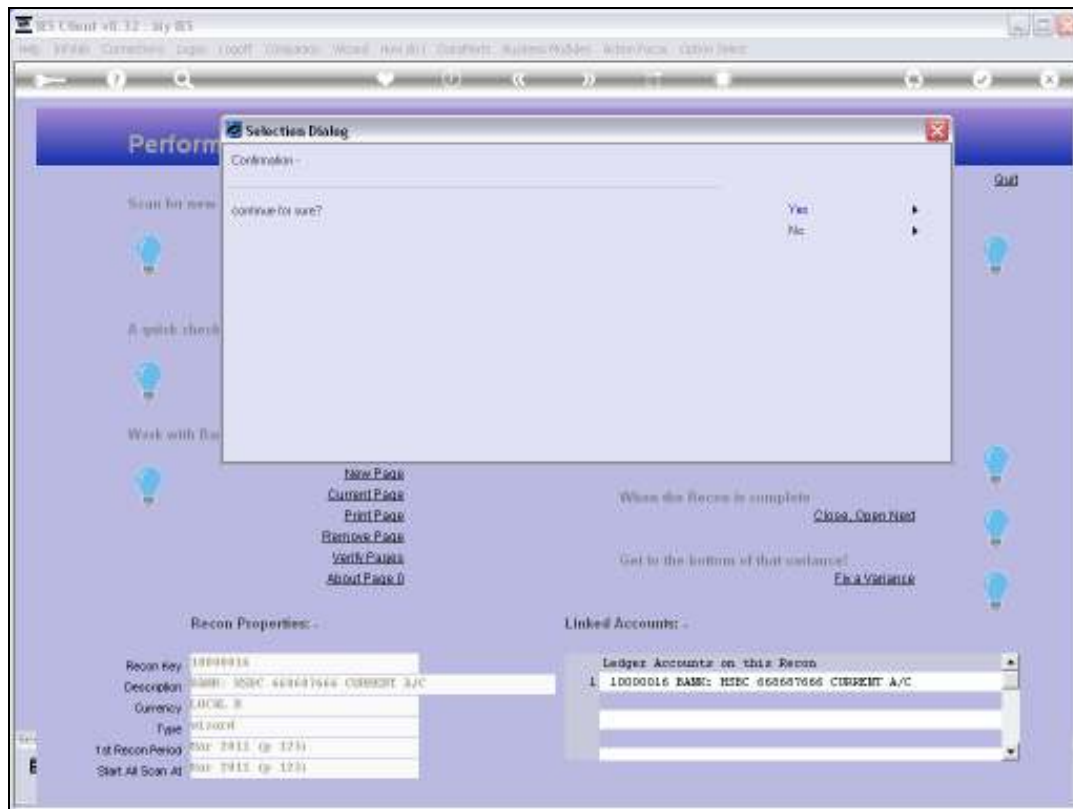
Slide notes: The system informs us about reconstruction.



Slide 8

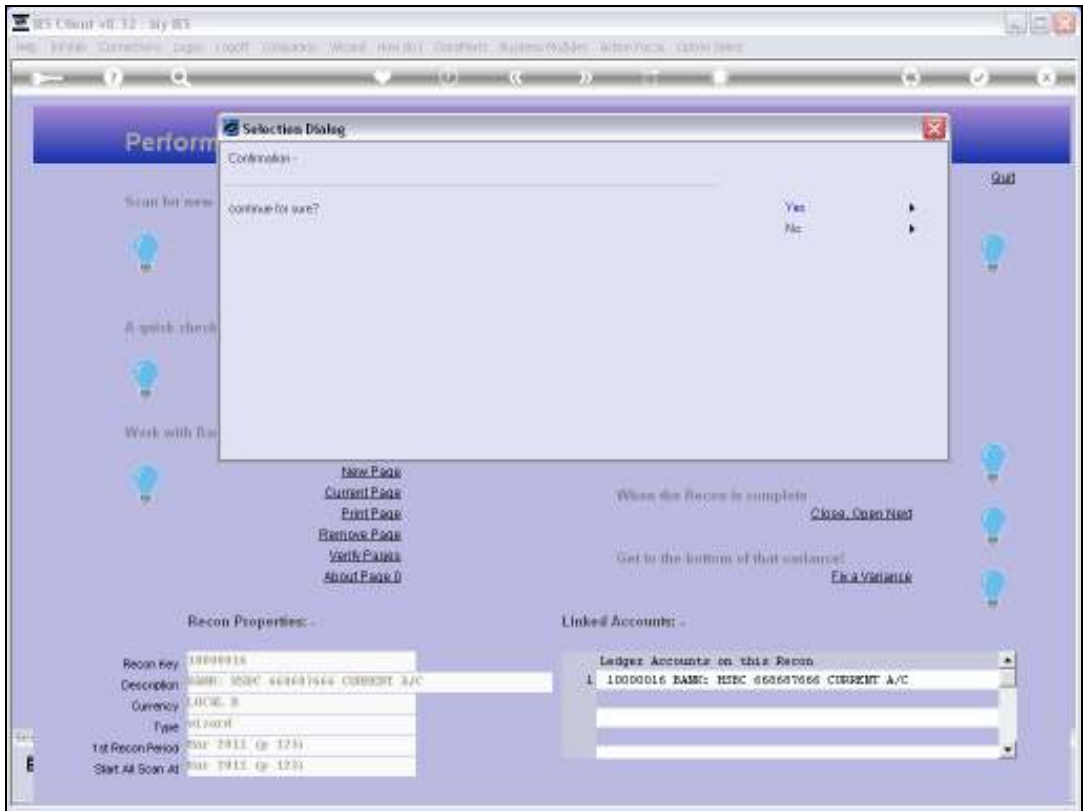
Slide notes:





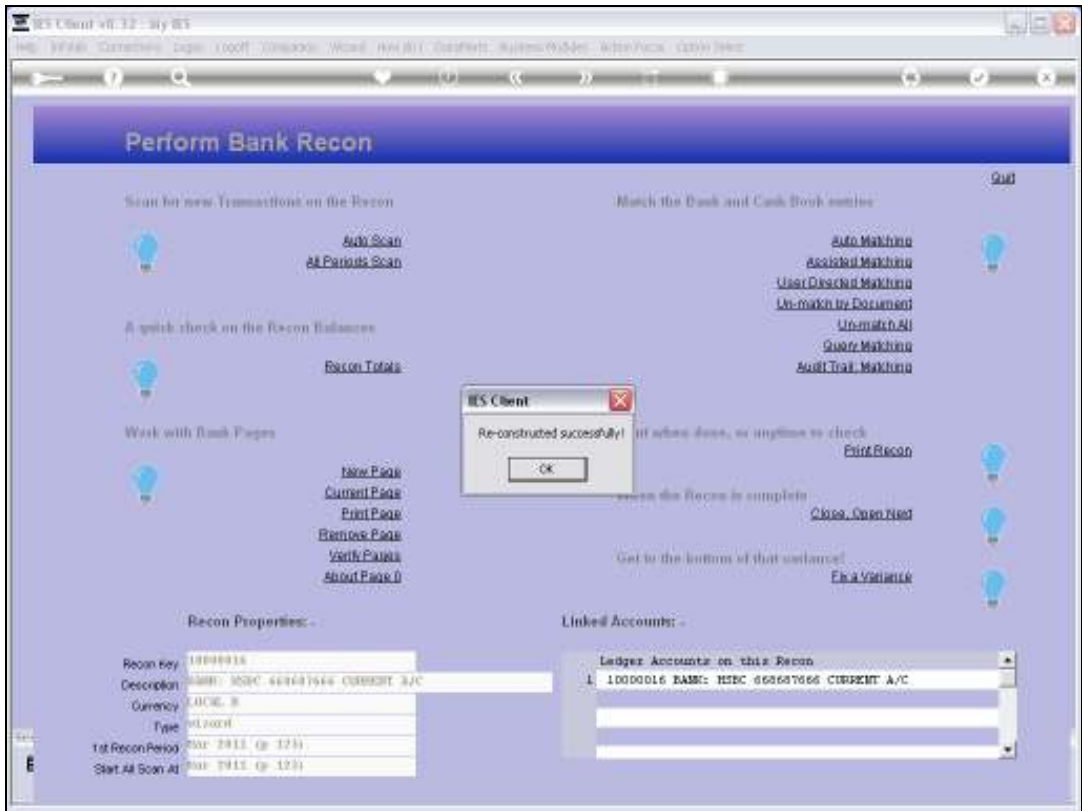
Slide 9

Slide notes: And we may choose 'yes' to reconstruct the Recon.



Slide 10

Slide notes:



Slide 11

Slide notes:



Slide 12

Slide notes:



Slide 13

Slide notes: